

*The New Jersey*  
**CONSTRUCTION  
REPORTER**

**OCTOBER 2011 DATA**

**CHRIS CHRISTIE, Governor**  
STATE OF NEW JERSEY

**LORI GRIFA, Commissioner**  
DEPARTMENT OF COMMUNITY AFFAIRS

**EDWARD M. SMITH, Director**  
DIVISION OF CODES AND STANDARDS

DISTRIBUTED BY THE

*New Jersey Department of*  
**COMMUNITY AFFAIRS**  
DIVISION OF CODES AND STANDARDS  
101 South Broad Street,  
PO Box 802  
Trenton, NJ 08625-0802  
[www.nj.gov/dca/divisions/codes/reporter/](http://www.nj.gov/dca/divisions/codes/reporter/)



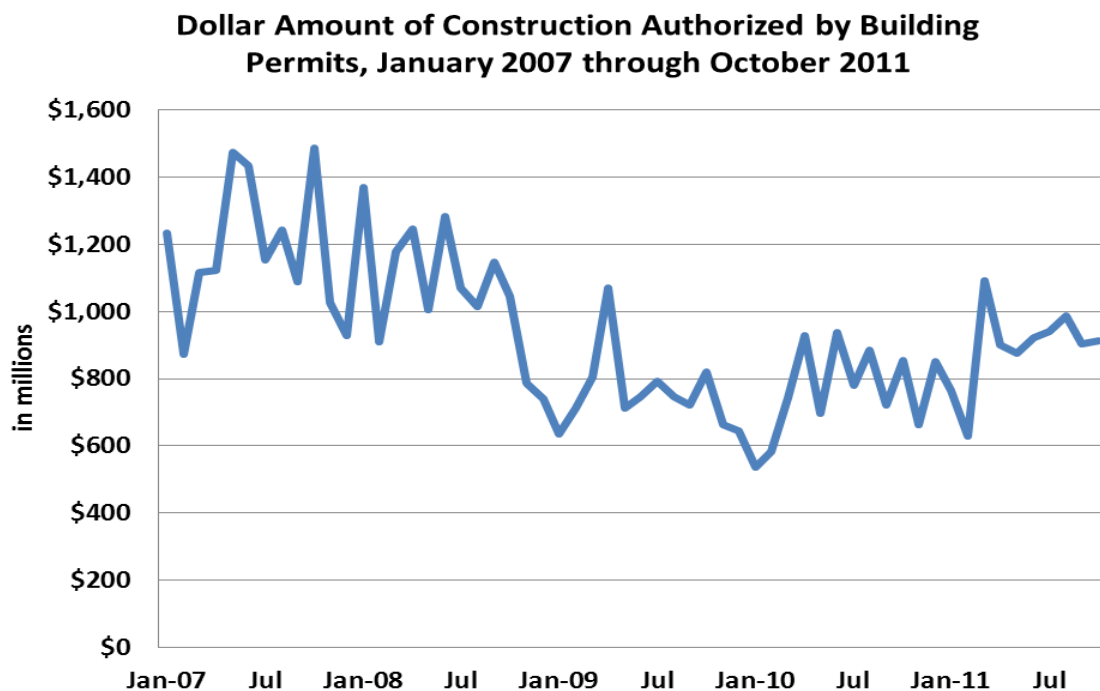
# THE NEW JERSEY CONSTRUCTION REPORTER

## TABLE OF CONTENTS

Contents	Description	Pages
<b>INTRODUCTION</b>		
Highlights	Analysis of data in this month's report	i-iii
Foreword	Background information	1
Exhibits A - C	Definition of terms used throughout the tables	2 - 4
<b>RESIDENTIAL CONSTRUCTION</b>		
Tables 1 - 6	Housing units authorized and certified, housing units demolished, monthly and year-to-date figures	5 - 14
<b>OFFICE SPACE</b>		
Tables 7 - 8	Square feet of office space authorized and certified, monthly and year-to-date figures	15 - 19
<b>RETAIL SPACE</b>		
Tables 9 - 10	Square feet of retail space authorized and certified, monthly and year-to-date figures	20 - 24
<b>DOLLAR AMOUNTS</b>		
Tables 11 - 13	Dollar amount of construction authorized by county and top municipalities, monthly and year to date; dollar amount of construction authorized by use group and permit type, New Jersey totals, monthly and year to date	25 - 30
<b>MUNICIPAL SUMMARY DATA</b>		
	Housing units authorized and certified, office and retail space authorized, and dollar amount of construction authorized by municipality, monthly totals	MSD-1 - MSD-12
<b>ILLUSTRATIONS</b>		
Map 1	Housing units authorized by municipality, year to date	9
Map 2	Office space authorized by municipality, year to date	18
Map 3	Retail space authorized by municipality, year to date	23
Map 4	Estimated cost of construction authorized by municipality, year to date	28

## OCTOBER 2011 HIGHLIGHTS

- The dollar amount of construction authorized by building permits in October was \$913.5 million, about the same as last month.
- Residential work was \$423.5 million, or 46.4 percent of all activity. Office, retail, and other nonresidential construction totaled \$490 million, accounting for 53.6 percent of all work.
- 556 of New Jersey's 566 municipalities reported.



- Union Township, Union County had the most work in October, \$29.5 million. A 31,000 square-foot elementary school addition accounted for \$23.2 million.
- East Rutherford and Ridgefield, both in Bergen County, had \$22.4 million and \$21.5 million, respectively. Most of the work in East Rutherford was for an alteration to a high school. Most of the activity in Ridgefield was for new towers for a power company.
- Most of the \$21.4 million of construction reported in Atlantic City was for the new casino/hotel for Revel Entertainment and renovation of the Golden Nugget.

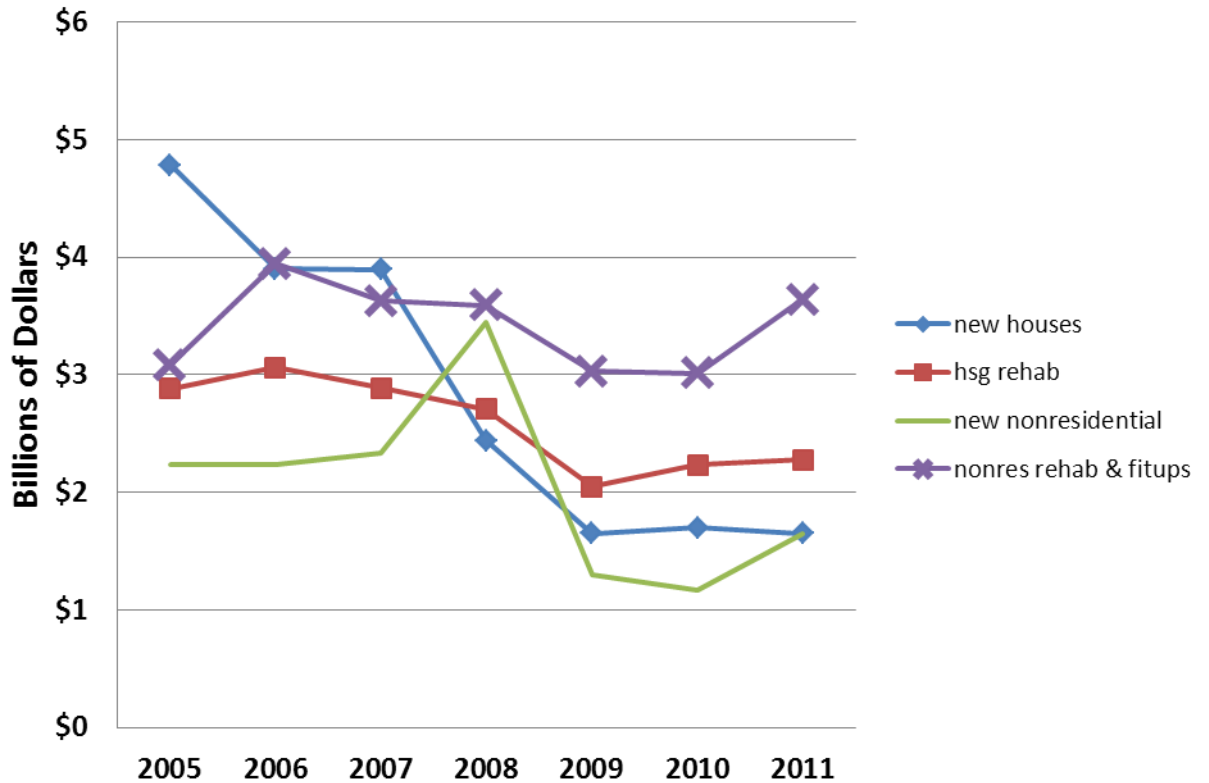
- State Buildings had \$35.3 million of construction in October. A big development reported was restoration of an academic building at Montclair State University in Madison.

### Year to Date

- Ten months into 2011, several trends appear.
- The dollar amount of work authorized by building permits through October exceeds this time last year by more than one billion dollars.
- New home construction continues to slump, but has improved over levels reported two years ago.
- Office construction is up by nearly five percent compared to last year; new retail space is down by 28 percent.

<b>Major Construction Indicators, New Jersey: Ten-Month Comparisons</b>				
<b>Period</b>	<b>Estimated Cost of Construction</b>	<b>Authorized Housing Units</b>	<b>Authorized Office Space (square feet)</b>	<b>Authorized Retail Space (square feet)</b>
January – October 2011	\$9,205,544,490	9,331	4,449,157	1,409,407
January – October 2010	\$8,107,889,667	9,571	4,247,383	1,956,506
January – October 2009	\$8,022,938,061	8,721	3,247,260	1,940,791
January – October 2008	\$12,177,829,064	14,260	6,884,966	5,144,205
January – October 2007	\$12,748,923,589	22,004	7,397,004	3,711,951
January – October 2006	\$13,144,183,527	26,681	9,574,824	4,595,944
January – October 2005	\$12,985,138,148	33,712	10,027,755	5,379,544
January – October 2004	\$11,459,646,185	32,344	9,713,290	4,492,364
<b>Difference Between 2010 and 2011</b>				
2010 – 2011	\$1,097,654,823	-240	201,774	-547,099
Percent Change	13.5%	-2.5%	4.8%	-28.0%
<b>Difference Between 2009 and 2010</b>				
2009 – 2010	\$84,951,606	850	1,000,123	15,715
Percent Change	1.1%	9.7%	30.8%	0.8%
<b>Difference Between 2008 and 2009</b>				
2008 – 2009	-\$4,154,891,003	-5,539	-3,637,706	-3,203,414
Percent Change	-34.1%	-38.8%	-52.8%	-62.3%
Source: N.J. Department of Community Affairs, 12/7/11				

### Estimated Dollar Value of Construction Authorized by Building Permits, January-October 2005-11



- The dollar amount of construction authorized for new houses has remained steady over the past few years. Housing rehab has shown modest gain, as has the dollar value of construction authorized for new office, retail, and other nonresidential buildings.
- The only sector of the construction industry that did better in 2011 than in 2005 was tenant fit ups and renovations to office, retail, and other nonresidential uses. In 2011, the estimated cost of work authorized by permits issued between January and October was nearly \$553 million more (17.9 percent) than the \$3.083 billion authorized during the same ten months of 2005.

**T**HE NEW JERSEY CONSTRUCTION REPORTER contains statistics on construction activity in New Jersey. Information in the report comes from construction officials who administer the State Uniform Construction Code (UCC) (N.J.A.C. 5:23-1 et seq.) in New Jersey's 566 municipalities.

Each month, construction officials send to the New Jersey Department of Community Affairs (DCA) reports on the permits and certificates they issue. Permits authorize the start of construction and cover four types of activity: (1) New construction permits authorize the start of a new structure. (2) Permits for additions refer to work that will add space (volume and square feet) to an existing building. (3) Alterations also involve existing structures, but the work authorized will not add space. Typically, construction officials issue permits for alterations when the work is subject to one or more of the UCC's major subcodes (building, electrical, plumbing, fire protection). (4) Demolition permits authorize the removal of a building or some other structure. The *CONSTRUCTION REPORTER* identifies only those demolitions that will result in the loss of housing.

In addition to permits, the *CONSTRUCTION REPORTER* has information on the certificates issued by construction officials. While permits authorize the start of construction, certificates are issued for work completed and ready for occupancy. Each month, the *CONSTRUCTION REPORTER* will report on the number of housing units and the amount of office and retail space authorized for construction, along with the number of housing units and the amount of office and retail space completed.

### **Data Comparability**

The *CONSTRUCTION REPORTER* contains information on authorized housing units that is tabulated two different ways. The DCA tabulates Tables 1 through 3 and Tables 8 through 13 based on the use of buildings, defined in "groups" by New Jersey's UCC. Exhibit B on page 3 summarizes these groups.

Tables 4, 5, and 6 show authorized housing units as defined and tabulated by the United States Census Bureau. The New Jersey Department of Labor and Workforce Development prepares these tables for publication in the *CONSTRUCTION REPORTER*. Exhibit C on page 4 describes the housing definitions used by the Census Bureau.

The DCA series and the Census Bureau series on authorized housing units differ two important ways. First, the DCA series includes housing units created as a result of permits issued to alter or make additions to existing structures. The Census Bureau counts only those housing units authorized from permits issued for new construction.

Second, the Census Bureau imputes data for localities that fail to submit monthly reports on time. An asterisk in the Census column of data appearing in the Municipal Summary Data table at the back of the *CONSTRUCTION REPORTER* indicates those towns with imputed data. The Census Bureau bases these imputations on historic trends. The DCA series shows information for only those towns that submitted monthly reports. If a municipality failed to submit a monthly report on time, "No report" appears in the appropriate columns in the Municipal Summary Data table.

### **Additional Terms**

A number of other terms appear in the tables throughout the *CONSTRUCTION REPORTER*. Exhibit A on page 2 defines additional construction permit and certificate terms.

**Exhibit A**

<b>Summary of Building Permit and Certificate Terms</b>	
<b>Addition</b>	Permit type issued for construction work that adds space (volume and square feet) to an existing structure.
<b>Alteration</b>	Permit type involving one or more subcodes (building, electrical, fire protection, and plumbing). The work is authorized for an existing structure and does not add new space.
<b>Certificate</b>	A document issued by a construction official indicating completion of work for which a permit was issued.
<b>Dollar Amount of Construction</b>	Estimated cost of work, as reported by the permit applicant to the construction official.
<b>Demolition</b>	Permit type authorizing the demolition of an existing structure.
<b>Housing Units Certified</b>	A rental or for-sale unit completed and certified by the construction official for conforming to the standards in the New Jersey UCC.
<b>Housing Units Authorized by Building Permits</b>	A rental or for-sale dwelling unit authorized by a construction permit. See Exhibits B and C for explanations of the different definitions of housing structures. The Table 1 series and Tables 2 and 3 show housing units as classified by the residential use groups defined in Exhibit B. Tables 4, 5, and 6 identify authorized housing as defined by the U.S. Census Bureau. (See Exhibit C.)
<b>Housing Unit Demolitions</b>	Rental or for-sale housing to be demolished, as reported to the construction official by permit applicants.
<b>New Construction</b>	Permit type authorizing the start of a new structure.
<b>Permit</b>	A document issued by construction officials that authorizes the construction of a new structure or an addition, alteration, or demolition of an existing structure.
<b>Square Feet</b>	Estimated building area, as reported on permits for new construction and additions.
<b>State Buildings</b>	Buildings or structures constructed or owned by the State or any of its instrumentalities. Construction activity reported in this category includes State offices, colleges, hospitals, prisons, facilities operated by New Jersey Transit and the New Jersey Sports and Exposition Authority, and other State authorities.

**Exhibit B**

<b>Building Groups</b>	
<b>Residential</b>	Buildings where members of households live. Examples of residential groups include: one- and two-family houses (R-3 and R-5); apartments, dormitories, other multifamily houses (R-2); and mixed-use housing, where the house is a relatively smaller part of a building that has another use (e.g., an apartment over a store). Therapeutic residences (R-4) for 6 to 16 occupants are also included in this category. The Table 1 series and Tables 2 and 3 show authorized housing units by group definition.
----- <b>The following groups refer to industrial, commercial, and other nonresidential structures.</b> -----	
<b>Assembly</b>	Structures where people gather for civic, social, or religious purposes. Examples include: theaters and concert halls (group A-1); night clubs, dance halls, casino gaming areas, restaurants, taverns, and bars (A-2); churches, libraries, amusement arcades, community halls, gymnasiums, indoor swimming pools, art galleries, and museums (A-3); arenas, skating rinks, swimming pools, tennis courts (A-4); and grandstands, bleachers stadiums, and amusement park structures (A-5).
<b>Business</b>	Office buildings (group B) for business transactions of all kinds including banks, corporate offices, professional offices, government buildings, beauty shops, motor vehicle showrooms, and out-patient clinics.
<b>Educational</b>	Buildings for educational purposes through the 12th grade (group E).
<b>High Hazard</b>	Buildings used to manufacture, process, or store materials that constitute a high fire, explosion, or health hazard (group H).
<b>Hotels, Motels, Guest Houses</b>	Buildings for shelter and sleeping where the primary occupants use the facility on a temporary basis, staying less than 30 days (group R-1).
<b>Industrial</b>	Factory buildings where the occupants make, process, or assemble products that are not highly combustible, flammable, or explosive. Includes automotive, appliance, and furniture manufacturers; electric power plants; food processing plants; foundries; and water pumping, solid waste disposal, and incineration plants (group F).
<b>Institutional</b>	Buildings for people who suffer from physical limitations because of age or health; buildings for people detained for penal or correction purposes. Includes: supervised residential homes for six or more people (group I-1); medical and nursing-care facilities (I-2); jails, reformatories, and asylums (I-3); and day care for six or more occupants (I-4).
<b>Mercantile</b>	Buildings for display and sale purposes. Includes retail stores, automotive service stations, drug stores, shops, salesrooms, and markets (group M).
<b>Storage</b>	Buildings used to store goods that are not highly combustible or explosive. Includes warehouses, open parking garages, lumberyards, livestock shelters, and mausoleums (group S).
<b>Signs, Fences, Miscellaneous</b>	Accessory buildings and miscellaneous structures including fences over six feet in height, signs, private garages, sheds, agricultural buildings, carports, retaining walls, tanks, and swimming pools (group U).

**Exhibit C**

<b>Residential Structures (U.S. Census Bureau Definitions)</b>	
<p><b>Tables 4, 5, and 6 show authorized housing units based on the structure types defined below by the U.S. Census Bureau. The number of units shown in these tables refers to those authorized by building permits issued for new construction only.</b></p>	
<p><b>Single-Family Houses</b></p>	<p>Include all detached one-family houses and all attached one-family houses separated by a wall that extends from ground to roof with no common heating system or inter-structural public utilities. Include prefabricated, sectionalized, panelized, and modular homes that are manufactured partially off site, but are transported and assembled at the construction site.</p>
<p><b>Two-Family Buildings</b></p>	<p>Include all buildings with two housing units that may be above one another or side by side. If built side by side, the structures (1) do not have a wall that extends from ground to roof; or (2) share a heating system; or (3) have inter-structural public utilities, such as water supply and sewage disposal.</p>
<p><b>Three- and Four-Family Buildings</b></p>	<p>Include all buildings with three or four housing units. If built side by side, the structures (1) do not have a wall that extends from ground to roof; or (2) share a heating system; or (3) have inter-structural public utilities, such as water supply and sewage disposal.</p>
<p><b>Five-or-More-Family Buildings</b></p>	<p>Include all buildings with five or more housing units. If built side by side, the structures (1) do not have a wall that extends from ground to roof; or (2) share a heating system; or (3) have inter-structural public utilities, such as water supply and sewage disposal.</p>
<p><b>Private Housing Units</b></p>	<p>Housing owned by a private company or individual during the period of construction. This includes all housing built by nonprofit organizations and "turnkey" housing; for example, housing that will be sold to a local public housing authority when completed.</p>
<p><b>Public Housing Units</b></p>	<p>Housing owned by a governmental body during the period of construction.</p>

**Table 1a** HOUSE 12/7/11

Housing Units Authorized by Building Permits: New Jersey Counties, October 2011								
County	October				Year to Date			
	Total	1 & 2 Family	Multifamily	Mixed Use	Total	1 & 2 Family	Multifamily	Mixed Use
ATLANTIC	38	33	0	5	301	292	0	9
BERGEN	123	35	0	88	1,320	301	633	386
BURLINGTON	37	11	26	0	456	237	217	2
CAMDEN	44	16	28	0	296	140	156	0
CAPE MAY	41	41	0	0	349	331	18	0
CUMBERLAND	15	15	0	0	123	122	0	1
ESSEX	17	17	0	0	419	118	301	0
GLOUCESTER	24	24	0	0	381	351	30	0
HUDSON	138	7	131	0	1,187	50	1,137	0
HUNTERDON	2	2	0	0	67	67	0	0
MERCER	79	16	63	0	346	150	196	0
MIDDLESEX	85	55	30	0	764	569	194	1
MONMOUTH	114	64	50	0	644	507	137	0
MORRIS	31	31	0	0	350	225	125	0
OCEAN	128	80	48	0	1,147	809	337	1
PASSAIC	3	2	1	0	244	84	157	3
SALEM	6	6	0	0	42	41	0	1
SOMERSET	34	34	0	0	411	289	120	2
SUSSEX	12	2	10	0	59	49	10	0
UNION	42	13	29	0	308	180	124	4
WARREN	9	9	0	0	117	115	2	0
STATE BUILDINGS*	0	0	0	0	0	0	0	0
<b>NEW JERSEY</b>	<b>1,022</b>	<b>513</b>	<b>416</b>	<b>93</b>	<b>9,331</b>	<b>5,027</b>	<b>3,894</b>	<b>410</b>
NJ 2010 12/7/10	872	603	266	3	9,571	5,832	3,526	213

The definition of housing units in the Table 1 series and Table 2 do not match those in Tables 4, 5, and 6. See "Data Comparability" section on page 1, and Exhibits B and C on pages 3 and 4 for details.

\*State buildings refer to structures owned or constructed by the State or any of its instrumentalities. See Exhibit A, Summary of Building Permit and Certificate Terms, on page 2.

**Table 1b** HSEMUN1 12/7/11

Housing Units Authorized by Building Permits: Top Municipalities, October 2011						
Rank	Municipality	County	Total	1 & 2 Family	Multifamily	Mixed Use
1	West New York Town	Hudson	125	0	125	0
2	Edgewater Borough	Bergen	88	0	0	88
3	Hamilton Township	Mercer	62	9	53	0
4	Stafford Township	Ocean	50	2	48	0
5	Manalapan Township	Monmouth	42	10	32	0
6	Piscataway Township	Middlesex	36	6	30	0
7	Cherry Hill Township	Camden	29	1	28	0
8	Willingboro Township	Burlington	26	0	26	0
9	Fanwood Borough	Union	24	0	24	0
10	Monroe Township	Middlesex	22	22	0	0
11	Marlboro Township	Monmouth	19	1	18	0
12	Ocean City	Cape May	17	17	0	0
13	Jackson Township	Ocean	17	17	0	0
14	Atlantic City	Atlantic	13	8	0	5
15	Aberdeen Township	Monmouth	13	13	0	0
16	Franklin Township	Somerset	13	13	0	0
17	North Caldwell Borough	Essex	12	12	0	0
18	Long Beach Township	Ocean	12	12	0	0
19	Avalon Borough	Cape May	10	10	0	0
20	Vineland City	Cumberland	10	10	0	0
<b>TOP MUNICIPALITIES</b>			640	163	384	93
<b>NEW JERSEY</b>			1,022	513	416	93
<b>TOP AS % OF STATE</b>			62.6%	31.8%	92.3%	100.0%

The definition of housing units in the Table 1 series and Table 2 do not match those in Tables 4, 5, and 6. See "Data Comparability" section on page 1, and Exhibits B and C on pages 3 and 4 for details.

**Table 1c** HSEMUN2 12/7/11

Housing Units Authorized by Building Permits: Top Municipalities, January through October 2011						
Rank	Municipality	County	Total	1 & 2 Family	Multifamily	Mixed Use
1	Edgewater Borough	Bergen	538	1	449	88
2	Jersey City	Hudson	530	18	512	0
3	Cliffside Park Borough	Bergen	284	17	0	267
4	Hoboken City	Hudson	265	1	264	0
5	Lakewood Township	Ocean	262	160	102	0
6	Monroe Township	Middlesex	245	245	0	0
7	West New York Town	Hudson	239	0	239	0
8	Newark City	Essex	180	13	167	0
9	Cinnaminson Township	Burlington	177	42	135	0
10	Piscataway Township	Middlesex	164	54	110	0
11	Stafford Township	Ocean	158	38	120	0
12	Manalapan Township	Monmouth	150	94	56	0
13	Pine Hill Borough	Camden	145	30	115	0
14	Elmwood Park Borough	Bergen	143	8	108	27
15	City of Orange Township	Essex	136	2	134	0
16	Secaucus Town	Hudson	124	4	120	0
17	Hamilton Township	Mercer	122	51	71	0
18	Little Egg Harbor Township	Ocean	122	47	74	1
19	Franklin Township	Somerset	120	120	0	0
20	Riverdale Borough	Morris	110	0	110	0
	<b>TOP MUNICIPALITIES</b>		4,214	945	2,886	383
	<b>NEW JERSEY</b>		9,331	5,027	3,894	410
	<b>TOP AS % OF STATE</b>		45.2%	18.8%	74.1%	93.4%

The definition of housing units in the Table 1 series and Table 2 do not match those in Tables 4, 5, and 6. See "Data Comparability" section on page 1, and Exhibits B and C on pages 3 and 4 for details.

**Table 1d** NEWHSE 12/7/11

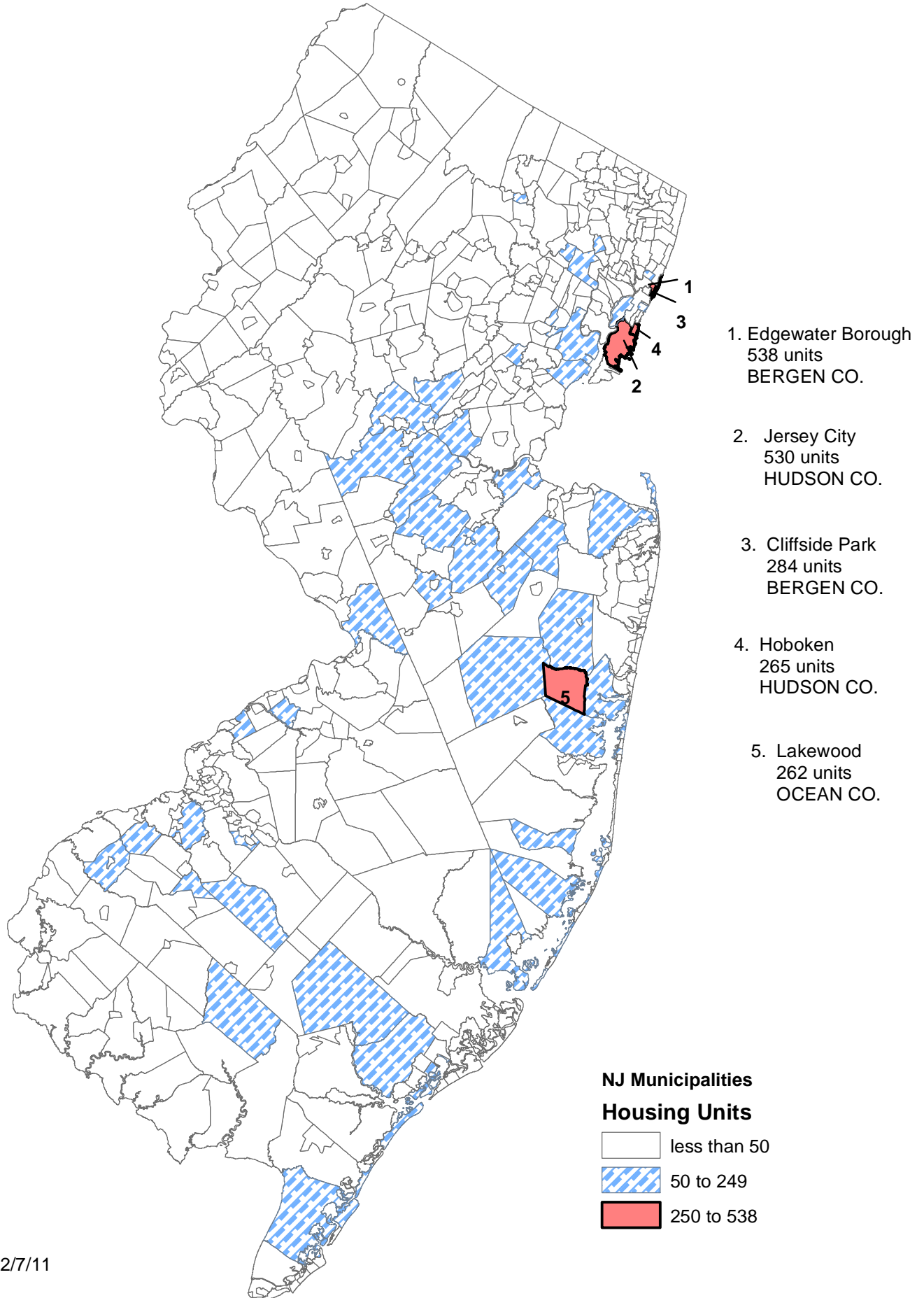
Housing Units Authorized by New Construction Building Permits: New Jersey Counties, October 2011								
County	October				Year to Date			
	Total	1 & 2 Family	Multifamily	Mixed Use	Total	1 & 2 Family	Multifamily	Mixed Use
ATLANTIC	34	33	0	1	82	80	2	0
BERGEN	123	35	0	88	820	560	254	6
BURLINGTON	37	11	26	0	515	236	275	4
CAMDEN	44	16	28	0	1,105	768	336	1
CAPE MAY	40	40	0	0	95	95	0	0
CUMBERLAND	14	14	0	0	83	78	5	0
ESSEX	17	17	0	0	447	313	134	0
GLOUCESTER	24	24	0	0	133	133	0	0
HUDSON	138	7	131	0	398	223	175	0
HUNTERDON	2	2	0	0	696	492	203	1
MERCER	79	16	63	0	55	55	0	0
MIDDLESEX	85	55	30	0	1,199	62	1,137	0
MONMOUTH	113	63	50	0	802	560	241	1
MORRIS	30	30	0	0	553	424	129	0
OCEAN	128	80	48	0	197	86	111	0
PASSAIC	3	2	1	0	128	124	4	0
SALEM	6	6	0	0	227	92	135	0
SOMERSET	34	34	0	0	76	76	0	0
SUSSEX	12	2	10	0	129	109	20	0
UNION	42	13	29	0	1,098	103	613	382
WARREN	8	8	0	0	295	290	0	5
STATE BUILDINGS*	0	0	0	0	0	0	0	0
<b>NEW JERSEY</b>	<b>1,013</b>	<b>508</b>	<b>416</b>	<b>89</b>	<b>9,133</b>	<b>4,959</b>	<b>3,774</b>	<b>400</b>
NJ 2010 12/7/10	857	590	265	2	9,216	5,709	3,298	209

The definition of housing units in the Table 1 series and Table 2 do not match those in Tables 4, 5, and 6. See "Data Comparability" section on page 1, and Exhibits B and C on pages 3 and 4 for details.

\*State buildings refer to structures owned or constructed by the State or any of its instrumentalities. See Exhibit A, Summary of Building Permit and Certificate Terms, on page 2.

You Are Viewing an Archived Copy from the New Jersey State Library

# Housing Units Authorized by Building Permits January-October 2011



**Table 2** CERTS 12/7/11

Housing Units Certified: New Jersey Counties, October 2011								
County	October				Year to Date			
	Total	1 & 2 Family	Multi- family	Mixed Use	Total	1 & 2 Family	Multi- family	Mixed Use
ATLANTIC	30	23	7	0	290	252	37	1
BERGEN	63	29	24	0	552	328	205	19
BURLINGTON	21	21	0	0	348	255	91	2
CAMDEN	16	16	0	0	362	190	172	0
CAPE MAY	35	35	0	0	376	365	10	1
CUMBERLAND	10	10	0	0	149	141	4	4
ESSEX	66	18	48	0	495	307	188	0
GLOUCESTER	31	29	2	0	532	333	198	1
HUDSON	540	6	534	0	889	44	845	0
HUNTERDON	4	3	1	0	113	58	55	0
MERCER	39	37	2	0	241	175	65	1
MIDDLESEX	94	76	18	0	624	500	123	1
MONMOUTH	58	58	0	0	504	411	93	0
MORRIS	33	32	1	0	319	219	100	0
OCEAN	122	72	50	0	1,319	886	429	4
PASSAIC	13	9	4	0	212	60	151	1
SALEM	13	13	0	0	106	44	60	2
SOMERSET	11	11	0	0	269	258	10	1
SUSSEX	52	7	45	0	112	66	45	1
UNION	5	5	0	0	237	63	174	0
WARREN	9	8	1	0	85	55	30	0
STATE BUILDINGS*	0	0	0	0	0	0	0	0
<b>NEW JERSEY</b>	<b>1,265</b>	<b>518</b>	<b>737</b>	<b>0</b>	<b>8,134</b>	<b>5,010</b>	<b>3,085</b>	<b>39</b>
NJ 2010 12/7/10	1,378	522	853	3	9,494	5,796	3,661	37

The definition of housing units in the Table 1 series and Table 2 do not match those in Tables 4, 5, and 6. See "Data Comparability" section on page 1, and Exhibits B and C on pages 3 and 4 for details.

\*State buildings refer to structures owned or constructed by the State or any of its instrumentalities. See Exhibit A, Summary of Building Permit and Certificate Terms, on page 2.

**Table 3** DEMOS 12/7/11

Housing Units Demolished: New Jersey Counties, October 2011								
County	October				Year to Date			
	Total	1 & 2 Family	Multifamily	Mixed Use	Total	1 & 2 Family	Multifamily	Mixed Use
ATLANTIC	22	20	0	2	111	102	0	9
BERGEN	20	19	0	1	261	243	11	7
BURLINGTON	13	13	0	0	82	76	4	2
CAMDEN	21	11	8	2	145	129	13	3
CAPE MAY	42	42	0	0	225	208	16	1
CUMBERLAND	4	4	0	0	45	45	0	0
ESSEX	16	9	6	1	179	93	82	4
GLOUCESTER	2	2	0	0	36	33	3	0
HUDSON	3	3	0	0	114	83	29	2
HUNTERDON	1	1	0	0	20	16	0	4
MERCER	9	9	0	0	76	61	13	2
MIDDLESEX	12	12	0	0	118	83	32	3
MONMOUTH	33	30	0	3	261	231	23	7
MORRIS	9	9	0	0	102	100	0	2
OCEAN	60	59	0	1	350	331	16	3
PASSAIC	2	2	0	0	65	56	6	3
SALEM	3	3	0	0	35	34	0	1
SOMERSET	44	4	40	0	96	53	40	3
SUSSEX	4	4	0	0	21	21	0	0
UNION	9	8	0	1	103	82	18	3
WARREN	1	0	0	1	5	4	0	1
STATE BUILDINGS*	0	0	0	0	0	0	0	0
<b>NEW JERSEY</b>	<b>330</b>	<b>264</b>	<b>54</b>	<b>12</b>	<b>2,450</b>	<b>2,084</b>	<b>306</b>	<b>60</b>
NJ 2010 12/7/10	355	264	85	6	3,597	2,313	1,228	56

\*State buildings refer to structures owned or constructed by the State or any of its instrumentalities. See Exhibit A, Summary of Building Permit and Certificate Terms, on page 2.

**Table 4**

<b>Residential Construction Authorized by Building Permits (Census Definitions) New Jersey, October 2011</b>						
<b>Type of Construction</b>	<b>September 2011</b>	<b>October 2011</b>	<b>Year to Date*</b>			
			<b>2010</b>	<b>2011</b>	<b>Change</b>	
					<b>Number</b>	<b>Percent</b>
Total Private Units Authorized	912	1,058	11,068	10,439	-629	-5.7
Single Family	498	544	6,241	5,399	-842	-13.5
Two Family	38	48	546	350	-196	-35.9
Three or Four Family	4	9	235	139	-96	-40.9
Five or More Family	372	457	4,046	4,551	505	12.5
CENSUS1 7/20/01						

\*Year-to-date totals include data received too late for monthly tabulation. The Census Bureau allocates revisions to prior months and therefore monthly year-to-date totals reflect these changes.

Authorized dwelling units in the Table 1 series and Table 2 do not match those in Tables 4, 5, and 6 due to definitional differences. See "Data Comparability" section on page 1, and Exhibits B and C on pages 3 and 4 for details.

Source: U.S. Census Bureau, Manufacturing and Construction Division  
 Prepared by: N.J. Department of Labor and Workforce Development, November, 2011

**Table 5**

You Are Viewing an Archived Copy from the New Jersey State Library

<b>Residential Construction Authorized by Building Permits (Census Definitions) New Jersey, 1990 to Present</b>						
<b>Year and Month</b>	<b>Number of Municipalities</b>	<b>Total</b>	<b>Single Family</b>	<b>Two Family</b>	<b>3 or 4 Family</b>	<b>5 or More Family</b>
1990	567	17,524	12,801	654	130	3,939
1991	567	14,856	12,869	402	101	1,484
1992	567	19,072	16,506	510	74	1,982
1993	567	25,188	21,340	758	129	2,961
1994	567	25,388	22,437	722	121	2,108
1995	567	21,521	18,341	670	158	2,352
1996	567	24,173	20,853	880	211	2,229
1997	566	28,018	23,472	916	324	3,306
1998	566	31,345	25,459	1,172	221	4,493
1999	566	31,976	25,129	1,468	290	5,089
2000	566	34,585	25,260	1,844	305	7,176
2001	566	28,267	21,503	1,827	779	4,158
2002	566	30,441	22,379	2,110	742	5,210
2003	566	32,984	22,163	2,870	912	7,039
2004	566	35,936	22,429	3,300	1,476	8,731
2005	566	38,588	22,264	3,212	1,437	11,675
2006	566	34,323	17,113	3,088	1,708	12,414
2007	566	25,389	13,066	1,692	1,311	9,320
2008	566	18,363	9,169	664	411	8,119
2009	566	12,421	7,211	400	206	4,604
2010	566	13,540	7,383	680	276	5,201
2011						
January <sup>†</sup>	566	1,004	502	38	36	428
February <sup>†</sup>	566	575	389	32	7	147
March <sup>†</sup>	566	1,260	733	34	14	479
April <sup>†</sup>	566	922	481	26	9	406
May <sup>†</sup>	566	1,147	554	24	6	563
June <sup>†</sup>	566	1,435	637	62	19	717
July <sup>†</sup>	566	970	500	16	15	439
August <sup>†</sup>	566	1,156	561	32	20	543
September <sup>†</sup>	566	912	498	38	4	372
October	566	1,058	544	48	9	457
<u>Year to Date*</u>						
October 2010	---	11,068	6,241	546	235	4,046
October 2011	---	10,439	5,399	350	139	4,551

<sup>†</sup>Revised – Monthly data are revised to reflect changes in the year-to-date total.

\*Year-to-date totals include data received too late for monthly tabulation. The Census Bureau allocates revisions to prior months and therefore monthly year-to-date totals reflect these changes.

Authorized dwelling units in the Table 1 series and Table 2 do not match those in Tables 4, 5, and 6 due to definitional differences.

See "Data Comparability" section on page 1, and Exhibits B and C on pages 3 and 4 for details.

Source: U.S. Census Bureau, Manufacturing and Construction Division

Prepared by: N.J. Department of Labor and Workforce Development, November, 2011

**Table 6**

<b>Residential Construction Authorized by Building Permits (Census Definitions) New Jersey Counties, 2011</b>						
<b>County</b>	<b>October</b>					<b>Total Year to Date* 2011</b>
	<b>Total</b>	<b>Single Family</b>	<b>Two Family</b>	<b>3 or 4 Family</b>	<b>5 or More Family</b>	
ATLANTIC	39	34	0	0	5	<b>337</b>
BERGEN	87	47	22	3	15	<b>1,047</b>
BURLINGTON	65	26	0	0	39	<b>679</b>
CAMDEN	59	21	0	0	38	<b>429</b>
CAPE MAY	45	27	18	0	0	<b>348</b>
CUMBERLAND	16	16	0	0	0	<b>150</b>
ESSEX	41	12	2	0	27	<b>500</b>
GLOUCESTER	39	31	0	0	8	<b>433</b>
HUDSON	69	4	4	6	55	<b>1,342</b>
HUNTERDON	22	12	0	0	10	<b>225</b>
MERCER	39	10	0	0	29	<b>351</b>
MIDDLESEX	102	44	0	0	58	<b>996</b>
MONMOUTH	89	61	0	0	28	<b>650</b>
MORRIS	37	32	0	0	5	<b>443</b>
OCEAN	118	70	0	0	48	<b>752</b>
PASSAIC	30	11	0	0	19	<b>347</b>
SALEM	12	7	0	0	5	<b>71</b>
SOMERSET	38	33	0	0	5	<b>523</b>
SUSSEX	29	14	0	0	15	<b>143</b>
UNION	69	19	2	0	48	<b>508</b>
WARREN	13	13	0	0	0	<b>165</b>
<b>NEW JERSEY</b>	<b>1,058</b>	<b>544</b>	<b>48</b>	<b>9</b>	<b>457</b>	<b>10,439</b>

CENSUS3 7/20/01

\*Year-to-date totals include data received too late for monthly tabulation. See Table 5 for revised statewide data for prior months.

Authorized dwelling units in the Table 1 series and Table 2 do not match those in Tables 4, 5, and 6 due to definitional differences. See "Data Comparability" section on page 1, and Exhibits B and C on pages 3 and 4 for details.

Source: U.S. Census Bureau, Manufacturing and Construction Division  
 Prepared by: N.J. Department of Labor and Workforce Development, November, 2011

**Table 7a** OFFCSPC 12/7/11

Office Square Feet Authorized by Building Permits: New Jersey Counties, September 2011						
County	October			Year to Date		
	Total	New Construction	Additions	Total	New Construction	Additions
ATLANTIC	0	0	0	75,773	62,518	13,255
BERGEN	14,155	14,155	0	935,115	837,329	97,786
BURLINGTON	51,409	47,477	3,932	143,998	126,230	17,768
CAMDEN	16,738	16,738	0	146,205	143,411	2,794
CAPE MAY	0	0	0	37,937	36,703	1,234
CUMBERLAND	41,352	41,352	0	66,031	59,973	6,058
ESSEX	41,732	37,824	3,908	137,726	110,939	26,787
GLOUCESTER	2,406	0	2,406	91,614	78,938	12,676
HUDSON	0	0	0	42,409	37,255	5,154
HUNTERDON	13,211	13,210	1	74,650	61,846	12,804
MERCER	16,605	16,393	212	449,711	422,542	27,169
MIDDLESEX	18,120	14,820	3,300	379,028	355,150	23,878
MONMOUTH	2,753	2	2,751	294,504	269,273	25,231
MORRIS	24,951	24,951	0	796,380	773,155	23,225
OCEAN	41,351	22,855	18,496	196,833	148,651	48,182
PASSAIC	3,737	2,938	799	121,977	77,965	44,012
SALEM	0	0	0	26,450	26,450	0
SOMERSET	9,996	9,996	0	122,428	77,467	44,961
SUSSEX	0	0	0	23,230	20,403	2,827
UNION	3,078	0	3,078	207,822	1,816	206,006
WARREN	1	0	1	19,812	7,325	12,487
STATE BUILDINGS*	0	0	0	59,524	59,524	0
<b>NEW JERSEY</b>	<b>301,595</b>	<b>262,711</b>	<b>38,884</b>	<b>4,449,157</b>	<b>3,794,863</b>	<b>654,294</b>
NJ 2010 12/7/10	446,155	265,347	180,808	4,247,383	3,424,951	822,432

\*State buildings refer to structures owned or constructed by the State or any of its instrumentalities. See Exhibit A, Summary of Building Permit and Certificate Terms, on page 2.

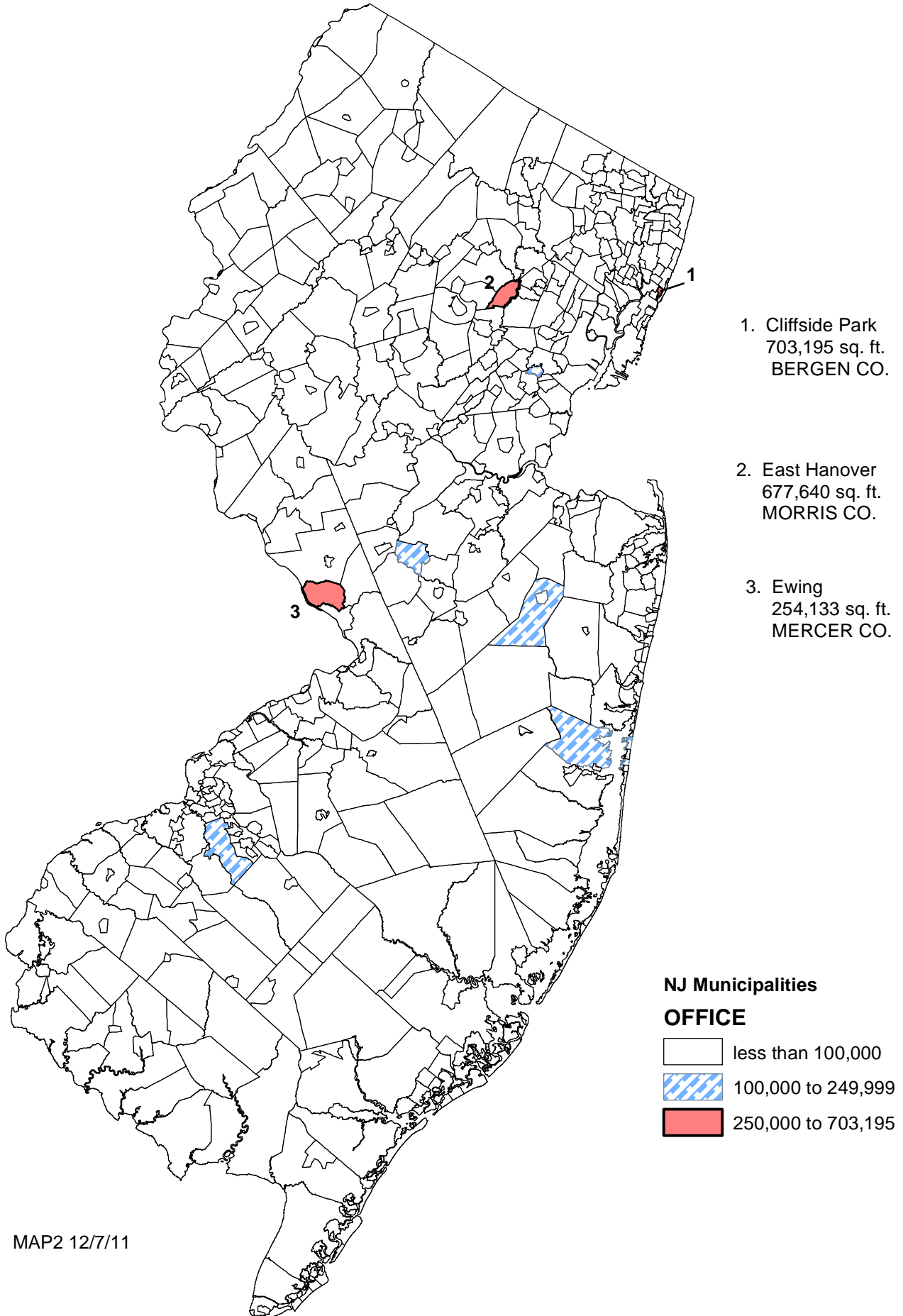
**Table 7b** OFFCMUN1 12/7/11

Office Square Feet Authorized by Building Permits: New Jersey Top Municipalities, October 2011					
Rank	Municipality	County	Total	New Construction	Additions
1	Millburn Township	Essex	36,338	36,338	0
2	Toms River Township	Ocean	28,310	10,260	18,050
3	Hopewell Township	Cumberland	24,930	24,930	0
4	Moorestown Township	Burlington	22,435	22,435	0
5	Medford Township	Burlington	19,866	15,934	3,932
6	Florham Park Borough	Morris	19,620	19,620	0
7	North Brunswick Township	Middlesex	14,820	14,820	0
8	Hamilton Township	Mercer	13,932	13,932	0
9	Berlin Township	Camden	11,798	11,798	0
10	Vineland City	Cumberland	11,430	11,430	0
11	Franklin Township	Somerset	9,996	9,996	0
12	Clinton Township	Hunterdon	9,500	9,500	0
13	Evesham Township	Burlington	9,108	9,108	0
14	Saddle Brook Township	Bergen	7,596	7,596	0
15	Brick Township	Ocean	6,816	6,816	0
16	Hackensack City	Bergen	6,559	6,559	0
17	Barnegat Township	Ocean	5,779	5,779	0
18	Jefferson Township	Morris	5,331	5,331	0
19	Raritan Township	Hunterdon	3,710	3,710	0
20	Monroe Township	Middlesex	3,300	0	3,300
	<b>TOP MUNICIPALITIES</b>		271,174	245,892	25,282
	<b>NEW JERSEY</b>		301,595	262,711	38,884
	<b>TOP AS % OF STATE</b>		89.9%	93.6%	65.0%

**Table 7c** OFFCMUN2 12/7/11

Office Square Feet Authorized by Building Permits: New Jersey Top Municipalities, January-October 2011					
Rank	Municipality	County	Total	New Construction	Additions
1	Cliffside Park Borough	Bergen	703,195	703,195	0
2	East Hanover Township	Morris	677,640	677,640	0
3	Ewing Township	Mercer	254,133	254,133	0
4	Freehold Township	Monmouth	185,324	185,324	0
5	Plainsboro Township	Middlesex	164,914	164,914	0
6	Kenilworth Borough	Union	139,675	0	139,675
7	Gloucester Township	Camden	125,548	125,548	0
8	Toms River Township	Ocean	117,848	97,360	20,488
9	West Windsor Township	Mercer	95,010	90,905	4,105
10	Hamilton Township	Mercer	70,821	52,159	18,662
11	Paterson City	Passaic	69,001	69,001	0
12	South Brunswick Township	Middlesex	63,900	63,900	0
13	Belmar Borough	Monmouth	54,627	54,627	0
14	North Brunswick Township	Middlesex	53,830	53,830	0
15	Fairfield Township	Essex	50,905	50,905	0
16	Washington Township	Morris	46,739	46,739	0
17	Raritan Township	Hunterdon	43,850	33,210	10,640
18	Franklin Township	Somerset	42,403	36,975	5,428
19	Maple Shade Borough	Burlington	41,975	41,975	0
20	Paramus Borough	Bergen	37,980	0	37,980
<b>TOP MUNICIPALITIES</b>			3,039,318	2,802,340	236,978
<b>NEW JERSEY</b>			4,449,157	3,794,863	654,294
<b>TOP AS % OF STATE</b>			68.3%	73.8%	36.2%

# Office Square Feet Authorized by Building Permits January-October 2011



**Table 8** CERTOFF 12/7/11

Office Square Feet Certified: New Jersey Counties, October 2011						
County	October			Year to Date		
	Total	New Construction	Additions	Total	New Construction	Additions
ATLANTIC	7,680	0	7,680	105,951	79,743	26,208
BERGEN	29,070	26,000	3,070	124,520	43,828	80,692
BURLINGTON	15,564	0	15,564	30,476	12,293	18,183
CAMDEN	120	0	120	282,319	269,964	12,355
CAPE MAY	192	0	192	11,561	8,830	2,731
CUMBERLAND	0	0	0	47,752	47,242	510
ESSEX	74,980	74,980	0	283,836	159,924	123,912
GLOUCESTER	20,236	20,236	0	146,177	141,601	4,576
HUDSON	143,662	143,662	0	179,421	179,421	0
HUNTERDON	2,165	2,164	1	36,236	36,001	235
MERCER	41,038	41,038	0	63,607	57,025	6,582
MIDDLESEX	0	0	0	308,361	211,043	97,318
MONMOUTH	94,724	94,119	605	312,180	262,099	50,081
MORRIS	834	0	834	86,259	66,420	19,839
OCEAN	10,524	10,524	0	145,097	141,666	3,431
PASSAIC	0	0	0	73,362	63,950	9,412
SALEM	1,179	1,179	0	16,851	11,099	5,752
SOMERSET	0	0	0	54,736	15,431	39,305
SUSSEX	0	0	0	20,600	12,500	8,100
UNION	0	0	0	43,221	40,120	3,101
WARREN	2,790	845	1,945	13,733	8,934	4,799
STATE BUILDINGS*	0	0	0	9,296	9,296	0
<b>NEW JERSEY</b>	<b>444,758</b>	<b>414,747</b>	<b>30,011</b>	<b>2,395,552</b>	<b>1,878,430</b>	<b>517,122</b>
NJ 2010 12/7/10	232,726	215,074	17,652	3,009,021	2,527,684	481,337

\*State buildings refer to structures owned or constructed by the State or any of its instrumentalities. See Exhibit A, Summary of Building Permit and Certificate Terms, on page 2.

**Table 9a** RETSPACE 12/7/11

Retail Square Feet Authorized by Building Permits: New Jersey Counties, October 2011						
County	October			Year to Date		
	Total	New Construction	Additions	Total	New Construction	Additions
ATLANTIC	0	0	0	16,034	16,034	0
BERGEN	14,431	14,431	0	76,985	74,585	2,400
BURLINGTON	0	0	0	13,575	9,767	3,808
CAMDEN	12,000	12,000	0	67,308	57,308	10,000
CAPE MAY	0	0	0	2,013	1,883	130
CUMBERLAND	0	0	0	2,919	1,496	1,423
ESSEX	0	0	0	117,984	117,984	0
GLOUCESTER	0	0	0	255,421	242,153	13,268
HUDSON	0	0	0	112,983	112,983	0
HUNTERDON	0	0	0	12,000	12,000	0
MERCER	0	0	0	73,960	73,960	0
MIDDLESEX	12,800	12,800	0	95,628	95,628	0
MONMOUTH	23,806	23,806	0	104,300	48,153	56,147
MORRIS	0	0	0	26,245	21,278	4,967
OCEAN	45,507	45,507	0	215,990	208,060	7,930
PASSAIC	0	0	0	112,884	112,753	131
SALEM	0	0	0	0	0	0
SOMERSET	0	0	0	26,119	21,686	4,433
SUSSEX	0	0	0	9,179	8,384	795
UNION	2,304	2,304	0	51,585	37,016	14,569
WARREN	2,295	2,295	0	16,295	16,295	0
STATE BUILDINGS*	0	0	0	0	0	0
<b>NEW JERSEY</b>	<b>113,143</b>	<b>113,143</b>	<b>0</b>	<b>1,409,407</b>	<b>1,289,406</b>	<b>120,001</b>
NJ 2010 12/7/10	320,637	317,474	3,163	1,956,506	1,858,746	97,760

\*State buildings refer to structures owned or constructed by the State or any of its instrumentalities. See Exhibit A, Summary of Building Permit and Certificate Terms, on page 2.

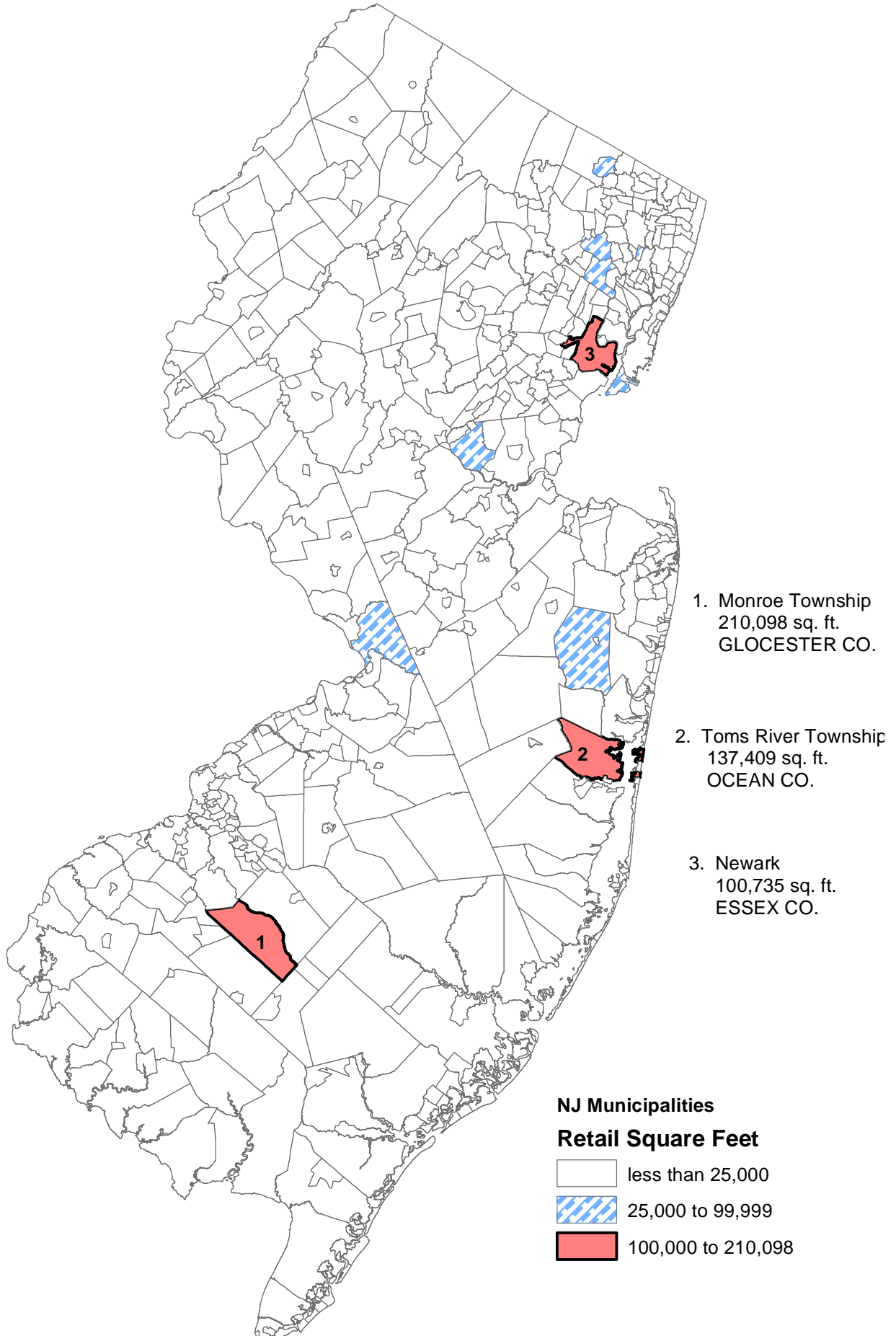
**Table 9b** RETMUN1 12/7/11

<b>Retail Square Feet Authorized by Building Permits: New Jersey Top Municipalities, October 2011</b>					
<b>Rank</b>	<b>Municipality</b>	<b>County</b>	<b>Total</b>	<b>New Construction</b>	<b>Additions</b>
1	Lakewood Township	Ocean	24,074	24,074	0
2	Brick Township	Ocean	18,440	18,440	0
3	Englishtown Borough	Monmouth	14,740	14,740	0
4	Ramsey Borough	Bergen	14,431	14,431	0
5	Gloucester Township	Camden	12,000	12,000	0
6	Aberdeen Township	Monmouth	9,066	9,066	0
7	Woodbridge Township	Middlesex	8,000	8,000	0
8	Metuchen Borough	Middlesex	4,800	4,800	0
9	Lacey Township	Ocean	2,993	2,993	0
10	Berkeley Heights Township	Union	2,304	2,304	0
11	Washington Township	Warren	2,295	2,295	0
12					
13					
14					
15					
16					
17					
18					
19					
20					
	<b>TOP MUNICIPALITIES</b>		113,143	113,143	0
	<b>NEW JERSEY</b>		113,143	113,143	0
	<b>TOP AS % OF STATE</b>		100.0%	100.0%	N/A

**Table 9c** RETMUN2 12/7/11

Retail Square Feet Authorized by Building Permits: New Jersey Top Municipalities, January-October 2011					
Rank	Municipality	County	Total	New Construction	Additions
1	Monroe Township	Gloucester	210,098	209,636	462
2	Toms River Township	Ocean	137,409	130,449	6,960
3	Newark City	Essex	100,735	100,735	0
4	Bayonne City	Hudson	90,976	90,976	0
5	Paterson City	Passaic	76,207	76,207	0
6	Piscataway Township	Middlesex	72,028	72,028	0
7	Hamilton Township	Mercer	58,574	58,574	0
8	Howell Township	Monmouth	38,148	0	38,148
9	Clifton City	Passaic	31,319	31,319	0
10	Ramsey Borough	Bergen	29,763	29,763	0
11	Maywood Borough	Bergen	27,984	27,984	0
12	Bellmawr Borough	Camden	24,697	24,697	0
13	Lakewood Township	Ocean	24,074	24,074	0
14	Jersey City	Hudson	22,007	22,007	0
15	Stafford Township	Ocean	19,315	19,315	0
16	Harrison Township	Gloucester	18,929	14,639	4,290
17	Woodbridge Township	Middlesex	18,800	18,800	0
18	Brick Township	Ocean	18,440	18,440	0
19	Aberdeen Township	Monmouth	18,132	18,132	0
20	Washington Township	Gloucester	17,728	17,728	0
<b>TOP MUNICIPALITIES</b>			1,055,363	1,005,503	49,860
<b>NEW JERSEY</b>			1,409,407	1,289,406	120,001
<b>TOP AS % OF STATE</b>			74.9%	78.0%	41.5%

# Retail Square Feet Authorized by Building Permits January-October 2011



**Table 10** CERTRET 12/7/11

Retail Square Feet Certified: New Jersey Counties, October 2011						
County	October			Year to Date		
	Total	New Construction	Additions	Total	New Construction	Additions
ATLANTIC	0	0	0	46,364	46,364	0
BERGEN	975	0	975	257,524	254,609	2,915
BURLINGTON	0	0	0	25,097	25,097	0
CAMDEN	14,611	14,611	0	105,953	102,953	3,000
CAPE MAY	0	0	0	12,234	11,940	294
CUMBERLAND	0	0	0	6,257	2,560	3,697
ESSEX	0	0	0	12,589	12,589	0
GLOUCESTER	0	0	0	54,426	54,426	0
HUDSON	0	0	0	121,306	121,306	0
HUNTERDON	0	0	0	0	0	0
MERCER	0	0	0	0	0	0
MIDDLESEX	0	0	0	88,360	87,640	720
MONMOUTH	96,865	96,865	0	347,024	306,303	40,721
MORRIS	0	0	0	21,233	21,233	0
OCEAN	100,660	98,660	2,000	181,128	154,486	26,642
PASSAIC	0	0	0	10,120	7,018	3,102
SALEM	0	0	0	0	0	0
SOMERSET	0	0	0	41	0	41
SUSSEX	72,000	72,000	0	153,606	146,639	6,967
UNION	0	0	0	18,366	0	18,366
WARREN	0	0	0	1,165	1	1,164
STATE BUILDINGS*	0	0	0	0	0	0
<b>NEW JERSEY</b>	<b>285,111</b>	<b>282,136</b>	<b>2,975</b>	<b>1,462,793</b>	<b>1,355,164</b>	<b>107,629</b>
NJ 2010 12/7/10	49,754	39,299	10,455	1,439,451	1,203,876	235,575

\*State buildings refer to structures owned or constructed by the State or any of its instrumentalities. See Exhibit A, Summary of Building Permit and Certificate Terms, on page 2.

**Table 11a** WORK 12/7/11

Dollar Amount of Construction Authorized by Building Permits: New Jersey Counties, October 2011						
County	October			Year to Date		
	Total	Residential	Nonresidential	Total	Residential	Nonresidential
ATLANTIC	\$41,089,469	\$12,385,194	\$28,704,275	\$356,304,838	\$96,734,906	\$259,569,932
BERGEN	149,268,138	53,716,691	95,551,447	1,171,804,496	552,401,809	619,402,687
BURLINGTON	38,769,583	14,651,186	24,118,397	353,474,092	144,689,498	208,784,594
CAMDEN	34,027,834	13,361,781	20,666,053	301,383,422	126,292,196	175,091,226
CAPE MAY	20,922,364	18,357,544	2,564,820	198,108,031	149,249,723	48,858,308
CUMBERLAND	12,601,211	2,426,919	10,174,292	118,377,078	23,686,657	94,690,421
ESSEX	47,199,145	18,787,385	28,411,760	655,781,405	311,811,429	343,969,976
GLOUCESTER	18,556,949	10,271,931	8,285,018	190,819,716	104,486,836	86,332,880
HUDSON	46,530,690	27,943,062	18,587,628	638,727,822	281,349,792	357,378,030
HUNTERDON	10,077,307	5,604,929	4,472,378	136,216,658	65,553,868	70,662,790
MERCER	68,472,235	23,098,237	45,373,998	623,536,721	167,455,750	456,080,971
MIDDLESEX	76,910,223	27,463,609	49,446,614	832,087,091	266,703,150	565,383,941
MONMOUTH	61,356,056	47,574,874	13,781,182	644,780,414	375,546,290	269,234,124
MORRIS	56,770,232	31,731,878	25,038,354	648,964,602	263,022,819	385,941,783
OCEAN	61,745,677	46,229,065	15,516,612	578,960,798	374,955,546	204,005,252
PASSAIC	20,080,482	11,773,654	8,306,828	337,722,532	125,479,982	212,242,550
SALEM	3,786,540	1,672,050	2,114,490	53,122,444	13,731,008	39,391,436
SOMERSET	34,733,661	21,369,309	13,364,352	446,349,813	196,730,114	249,619,699
SUSSEX	8,482,231	6,476,656	2,005,575	87,619,542	50,312,079	37,307,463
UNION	62,110,315	25,270,242	36,840,073	446,237,736	195,667,630	250,570,106
WARREN	4,674,206	3,111,116	1,563,090	66,636,373	31,018,318	35,618,055
STATE BUILDINGS*	35,317,923	240,000	35,077,923	318,528,866	3,670,018	314,858,848
<b>NEW JERSEY</b>	<b>\$913,482,471</b>	<b>\$423,517,312</b>	<b>\$489,965,159</b>	<b>\$9,205,544,490</b>	<b>\$3,920,549,418</b>	<b>\$5,284,995,072</b>
NJ 2010 12/8/10	\$855,469,007	\$436,698,358	\$418,770,649	\$8,107,889,667	\$3,928,168,782	\$4,179,720,885

\*State buildings refer to structures owned or constructed by the State or any of its instrumentalities. See Exhibit A, Summary of Building Permit and Certificate Terms, on page 2.

**Table 11b** WORK1 12/7/11

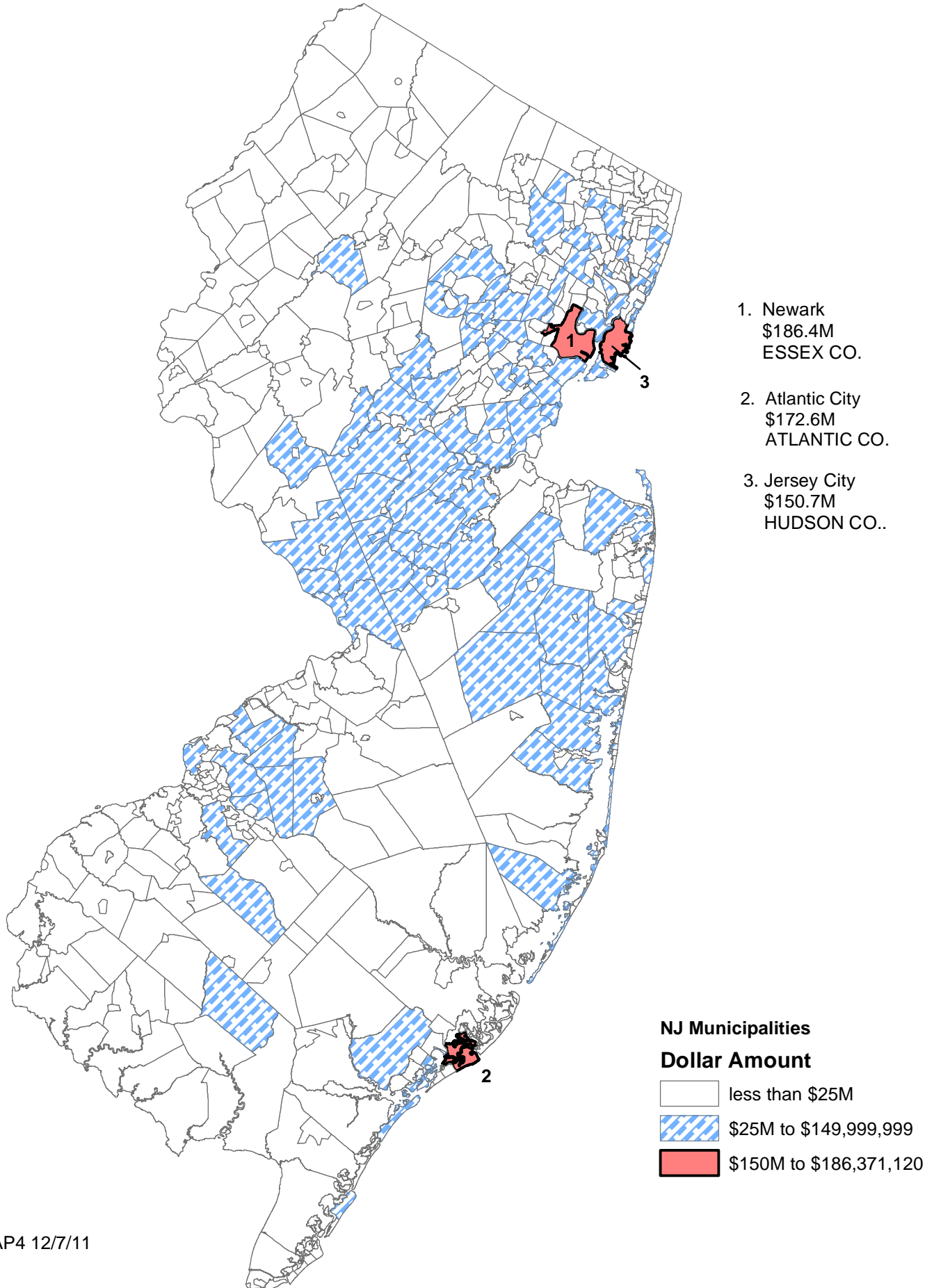
<b>Dollar Amount Construction Authorized by Building Permits: Top Municipalities, October 2011</b>					
<b>Rank</b>	<b>Municipality</b>	<b>County</b>	<b>Total</b>	<b>Residential</b>	<b>Nonresidential</b>
1	Union Township	Union	\$29,532,727	\$1,231,780	\$28,300,947
2	East Rutherford Borough	Bergen	22,415,522	201,322	22,214,200
3	Ridgefield Borough	Bergen	21,499,178	229,877	21,269,301
4	Atlantic City	Atlantic	21,445,785	806,215	20,639,570
5	Edgewater Borough	Bergen	18,073,442	2,071,772	16,001,670
6	Millburn Township	Essex	17,765,469	3,809,116	13,956,353
7	West New York Town	Hudson	16,954,988	16,876,873	78,115
8	Princeton Township	Mercer	15,383,704	2,528,382	12,855,322
9	Fort Lee Borough	Bergen	11,143,581	6,316,430	4,827,151
10	New Brunswick City	Middlesex	10,687,042	894,772	9,792,270
11	Lawrence Township	Mercer	10,086,659	1,971,390	8,115,269
12	Toms River Township	Ocean	9,770,262	5,195,460	4,574,802
13	Cherry Hill Township	Camden	9,051,284	4,741,615	4,309,669
14	Jersey City	Hudson	9,014,653	3,350,336	5,664,317
15	Moorestown Township	Burlington	8,893,362	1,180,541	7,712,821
16	Carteret Borough	Middlesex	8,701,536	726,321	7,975,215
17	Secaucus Town	Hudson	8,634,523	859,838	7,774,685
18	Princeton Borough	Mercer	8,576,263	1,316,068	7,260,195
19	Monroe Township	Middlesex	8,264,097	5,949,955	2,314,142
20	Long Beach Township	Ocean	8,258,808	8,258,808	0
<b>TOP MUNICIPALITIES</b>			265,894,077	68,516,871	105,981,366
<b>NEW JERSEY</b>			\$913,482,471	\$423,517,312	\$489,965,159
<b>TOP AS % OF STATE</b>			29.1%	16.2%	21.6%

**Table 11c** WORK2 12/7/11

<b>Dollar Amount Construction Authorized by Building Permits: Top Municipalities, January-October 2011</b>					
<b>Rank</b>	<b>Municipality</b>	<b>County</b>	<b>Total</b>	<b>Residential</b>	<b>Nonresidential</b>
1	Newark City	Essex	\$186,371,120	\$52,902,729	\$133,468,391
2	Atlantic City	Atlantic	172,637,410	4,210,082	168,427,328
3	Jersey City	Hudson	150,702,108	72,566,547	78,135,561
4	Secaucus Town	Hudson	143,671,206	25,755,757	117,915,449
5	Toms River Township	Ocean	140,429,594	32,396,033	108,033,561
6	Clifton City	Passaic	128,234,728	26,770,121	101,464,607
7	Hoboken City	Hudson	118,622,194	108,483,921	10,138,273
8	Livingston Township	Essex	117,888,935	39,501,041	78,387,894
9	Plainsboro Township	Middlesex	109,470,548	8,003,267	101,467,281
10	East Hanover	Morris	109,151,448	3,703,876	105,447,572
11	Woodbridge Township	Middlesex	102,656,433	24,158,606	78,497,827
12	Freehold Township	Monmouth	102,581,325	13,962,620	88,618,705
13	Franklin Township	Somerset	101,960,900	28,922,006	73,038,894
14	Princeton Borough	Mercer	93,874,956	18,330,691	75,544,265
15	Edgewater Borough	Bergen	93,833,404	64,376,590	29,456,814
16	Cliffside Park Borough	Bergen	89,308,240	8,369,205	80,939,035
17	Wood-Ridge Borough	Bergen	88,389,285	2,314,217	86,075,068
18	South Brunswick	Middlesex	86,024,763	24,246,599	61,778,164
19	West Windsor	Mercer	84,510,707	31,116,865	53,393,842
20	Lakewood Township	Ocean	80,371,027	45,577,531	34,793,496
<b>TOP MUNICIPALITIES</b>			2,300,690,331	635,668,304	1,665,022,027
<b>NEW JERSEY</b>			\$9,205,544,490	\$3,920,549,418	\$5,284,995,072
<b>TOP AS % OF STATE</b>			25.0%	16.2%	31.5%

You Are Viewing an Archived Copy from the New Jersey State Library

# Estimated Dollar Amount of Construction Authorized by Building Permits January-October 2011



**Table 12** USEGROUP 12/7/11

Dollar Amount of Construction Authorized by Building Permits by Use Group: New Jersey, October 2011						
Use Group	October			Year to Date		
	Permits	Construction Costs	Square Feet	Permits	Construction Costs	Square Feet
RESIDENTIAL	30,374	\$423,517,312	3,021,148	258,472	\$3,920,549,418	28,121,504
1 & 2 Family	28,683	360,754,434	2,233,849	242,033	3,150,006,782	21,232,416
Multifamily	1,691	62,762,878	787,299	16,439	770,542,636	6,889,088
NONRESIDENTIAL	6,148	\$489,965,159	1,024,645	64,950	5,284,995,072	14,343,883
Hotels, Motels, Guest Houses	47	9,250,738	5,436	792	60,049,094	440,040
Assembly	490	51,022,258	106,582	5,153	557,441,943	1,277,486
Business	2,357	195,408,236	301,595	23,412	2,441,049,552	4,449,157
Educational	173	66,894,532	65,520	2,359	559,411,983	766,242
Hazardous Use	16	2,913,386	10,712	70	7,015,220	21,360
Industrial	74	27,382,679	14,868	653	164,592,736	326,391
Institutional	73	16,669,203	84,898	871	182,658,972	192,645
Retail	431	24,972,848	113,143	4,442	327,264,556	1,409,407
Storage	192	36,081,055	80,960	1,832	372,464,176	3,506,851
Signs, Fences, Miscellaneous	2,295	59,370,224	240,931	25,366	613,046,840	1,954,304
<b>NEW JERSEY</b>	<b>36,522</b>	<b>\$913,482,471</b>	<b>4,045,793</b>	<b>323,422</b>	<b>\$9,205,544,490</b>	<b>42,465,387</b>
NJ 2010 12/7/10	33,459	\$855,469,007	4,770,652	322,900	\$8,107,889,667	43,980,111

**Table 13** PARTIC 12/7/11

Dollar Amount of Construction Authorized by Building Permits: New Jersey, October 2011					
Month	Number of Municipalities Reporting	Total	New Construction	Additions	Alterations
JANUARY	562	\$780,468,388	\$332,016,912	\$50,741,461	\$397,710,015
FEBRUARY	564	652,743,443	246,586,660	62,313,612	343,843,171
MARCH	566	1,131,428,528	507,433,269	74,738,107	549,257,152
APRIL	564	912,682,600	327,148,082	121,879,317	463,655,201
MAY	565	907,292,687	228,907,425	106,550,139	571,835,123
JUNE	565	1,031,213,792	322,691,440	90,507,102	618,015,250
JULY	566	951,981,348	309,683,787	72,157,954	570,139,607
AUGUST	564	1,005,178,732	380,562,624	69,227,218	555,388,890
SEPTEMBER	565	919,072,501	342,556,467	75,104,310	501,411,724
OCTOBER	556	913,482,471	298,343,952	97,266,388	517,872,131
NOVEMBER					
DECEMBER					
<b>TOTAL</b>		<b>\$9,205,544,490</b>	<b>\$3,295,930,618</b>	<b>\$820,485,608</b>	<b>\$5,089,128,264</b>
YEAR-TO-DATE TOTAL 2010 12/7/10		\$8,107,889,667	\$2,863,027,965	\$914,917,168	\$4,329,944,534

## NOTE:

Users of the monthly *CONSTRUCTION REPORTER* may notice that year-to-date figures in a particular issue may not be obtained by merely summing the monthly totals that appear in previous issues. This is because the construction data compiled by the New Jersey Department of Community Affairs are continuously updated. Monthly construction reports submitted too late to make the January issue of the *CONSTRUCTION REPORTER*, for example, are included in the year-to-date totals that appear in the February issue.

### MUNICIPAL SUMMARY DATA, October 2011

AREA NAME	AUTHORIZED	AUTHORIZED	HOUSING	OFFICE SPACE	RETAIL SPACE	RESI-	NONRESI-
	HOUSING	HOUSING UNITS	UNITS	AUTHORIZED	AUTHORIZED	DENTIAL	DENTIAL
	UNITS	(CENSUS	CERTIFIED	BY BUILDING	BY BUILDING	(\$ AMOUNT)	(\$ AMOUNT)
		DEFINITIONS)		PERMITS	PERMITS		
<b>Atlantic County</b>	38	39	30	0	0	\$12,385,194	\$28,704,275
<b>Bergen County</b>	123	87	63	14,155	14,431	53,716,691	95,551,447
<b>Burlington County</b>	37	65	21	51,409	0	14,651,186	24,118,397
<b>Camden County</b>	44	59	16	16,738	12,000	13,361,781	20,666,053
<b>Cape May County</b>	41	45	35	0	0	18,357,544	2,564,820
<b>Cumberland County</b>	15	16	10	41,352	0	2,426,919	10,174,292
<b>Essex County</b>	17	41	66	41,732	0	18,787,385	28,411,760
<b>Gloucester County</b>	24	39	31	2,406	0	10,271,931	8,285,018
<b>Hudson County</b>	138	69	540	0	0	27,943,062	18,587,628
<b>Hunterdon County</b>	2	22	4	13,211	0	5,604,929	4,472,378
<b>Mercer County</b>	79	39	39	16,605	0	23,098,237	45,373,998
<b>Middlesex County</b>	85	102	94	18,120	12,800	27,463,609	49,446,614
<b>Monmouth County</b>	114	89	58	2,753	23,806	47,574,874	13,781,182
<b>Morris County</b>	31	37	33	24,951	0	31,731,878	25,038,354
<b>Ocean County</b>	128	118	122	41,351	45,507	46,229,065	15,516,612
<b>Passaic County</b>	3	30	13	3,737	0	11,773,654	8,306,828
<b>Salem County</b>	6	12	13	0	0	1,672,050	2,114,490
<b>Somerset County</b>	34	38	11	9,996	0	21,369,309	13,364,352
<b>Sussex County</b>	12	29	52	0	0	6,476,656	2,005,575
<b>Union County</b>	42	69	5	3,078	2,304	25,270,242	36,840,073
<b>Warren County</b>	9	13	9	1	2,295	3,111,116	1,563,090
<b>State Buildings</b>	0		0	0	0	240,000	35,077,923
<b>New Jersey</b>	<b>1,022</b>	<b>1,058</b>	<b>1,265</b>	<b>301,595</b>	<b>113,143</b>	<b>\$423,517,312</b>	<b>\$489,965,159</b>
<b>NEW JERSEY 2010</b>	<b>11,885</b>	<b>13,535</b>	<b>11,625</b>	<b>5,496,579</b>	<b>2,192,231</b>	<b>\$4,879,205,601</b>	<b>\$4,889,436,742</b>
<b>NEW JERSEY 2009</b>	<b>11,145</b>	<b>10,827</b>	<b>14,460</b>	<b>4,253,888</b>	<b>2,248,935</b>	<b>\$4,506,768,272</b>	<b>\$5,010,957,124</b>
<b>NEW JERSEY 2008</b>	<b>16,388</b>	<b>18,369</b>	<b>18,699</b>	<b>7,962,998</b>	<b>5,557,101</b>	<b>\$5,915,342,801</b>	<b>\$8,029,191,777</b>
<b>NEW JERSEY 2007</b>	<b>25,948</b>	<b>25,389</b>	<b>23,138</b>	<b>9,569,501</b>	<b>5,423,889</b>	<b>\$8,047,734,107</b>	<b>\$7,308,838,713</b>
<b>NEW JERSEY 2006</b>	<b>32,050</b>	<b>34,323</b>	<b>28,564</b>	<b>11,113,555</b>	<b>5,186,662</b>	<b>\$8,320,885,749</b>	<b>\$7,354,222,206</b>
<b>NEW JERSEY 2005</b>	<b>39,688</b>	<b>38,375</b>	<b>31,047</b>	<b>11,038,132</b>	<b>5,965,258</b>	<b>\$9,127,194,950</b>	<b>\$6,270,312,197</b>
<b>NEW JERSEY 2004</b>	<b>39,254</b>	<b>35,936</b>	<b>27,950</b>	<b>12,219,068</b>	<b>4,961,257</b>	<b>\$7,972,659,530</b>	<b>\$6,301,672,320</b>
<b>NEW JERSEY 2003</b>	<b>35,171</b>	<b>32,984</b>	<b>26,932</b>	<b>9,744,146</b>	<b>6,038,428</b>	<b>\$6,674,318,674</b>	<b>\$5,474,429,133</b>
<b>NEW JERSEY 2002</b>	<b>34,589</b>	<b>30,411</b>	<b>29,174</b>	<b>9,261,054</b>	<b>7,560,913</b>	<b>\$6,210,486,721</b>	<b>\$5,869,455,378</b>
<b>NEW JERSEY 2001</b>	<b>35,680</b>	<b>28,267</b>	<b>30,054</b>	<b>19,134,533</b>	<b>7,244,833</b>	<b>\$5,756,546,492</b>	<b>\$6,250,910,138</b>
<b>NEW JERSEY 2000</b>	<b>38,065</b>	<b>34,585</b>	<b>29,705</b>	<b>15,531,039</b>	<b>6,063,412</b>	<b>\$5,575,603,576</b>	<b>\$5,812,079,758</b>
<b>NEW JERSEY 1999</b>	<b>37,536</b>	<b>31,976</b>	<b>28,109</b>	<b>13,237,891</b>	<b>6,226,471</b>	<b>\$5,377,163,097</b>	<b>\$5,207,004,433</b>
<b>NEW JERSEY 1998</b>	<b>35,676</b>	<b>31,345</b>	<b>28,008</b>	<b>12,703,824</b>	<b>7,921,892</b>	<b>\$4,812,845,052</b>	<b>\$4,583,910,465</b>
<b>NEW JERSEY 1997</b>	<b>30,017</b>	<b>28,018</b>	<b>34,670</b>	<b>10,490,171</b>	<b>5,688,955</b>	<b>\$4,083,041,927</b>	<b>\$4,263,491,187</b>
<b>Atlantic County</b>							
Absecon City	0	0	0	0	0	137,539	19,225
Atlantic City	13	3 *	1	0	0	806,215	20,639,570
Brigantine City	3	3	0	0	0	2,486,277	85,850
Buena Borough	1	0 *	0	0	0	24,274	2,742,000
Buena Vista Township	1	1	1	0	0	210,930	172,274
Corbin City	0	0	0	0	0	10,700	12,800
Egg Harbor City	0	1 *	0	0	0	66,100	102,100
Egg Harbor Township	9	11	6	0	0	1,438,105	3,230,305
Estell Manor City	0	0	2	0	0	64,850	107,950
Folsom Borough	0	0	0	0	0	40,000	0
Galloway Township	2	2	0	0	0	651,972	162,950
Hamilton Township	3	0	5	0	0	455,835	200,041
Hammonton Township	0	0	1	0	0	199,057	344,353
Linwood City	0	0 *	0	0	0	439,454	77,725
Longport City	2	3	0	0	0	1,769,520	0

**MUNICIPAL SUMMARY DATA, October 2011**

AREA NAME	AUTHORIZED	AUTHORIZED	HOUSING	OFFICE SPACE	RETAIL SPACE	RESI- DENTIAL (\$ AMOUNT)	NONRESI- DENTIAL (\$ AMOUNT)
	HOUSING UNITS	HOUSING UNITS (CENSUS DEFINITIONS)	UNITS CERTIFIED	AUTHORIZED BY BUILDING PERMITS	AUTHORIZED BY BUILDING PERMITS		
Margate City	4	4	2	0	0	2,525,093	157,001
Mullica City	0	1 *	2	0	0	84,759	117,600
Northfield City	0	1 *	0	0	0	193,462	23,788
Pleasantville City	0	8 *	3	0	0	97,929	44,159
Port Republic City	0	0	0	0	0	41,900	0
Somers Point City	0	1 *	7	0	0	246,140	454,384
Ventnor City	0	0 *	0	0	0	381,525	0
Weymouth Township	0	0	0	0	0	13,558	10,200
<b>Bergen County</b>							
Allendale Borough	No report	3 *	No report	No report	No report	No report	No report
Alpine Borough	0	1 *	1	0	0	270,609	354,626
Bergenfield Borough	0	0	0	0	0	786,309	84,017
Bogota Borough	0	1 *	0	0	0	108,304	31,460
Carlstadt Borough	0	2 *	0	0	0	218,907	4,555,404
Cliffside Park Borough	2	2	22	0	0	819,944	78,210
Closter Borough	1	1	0	0	0	913,253	108,012
Cresskill Borough	1	1 *	0	0	0	955,446	250,801
Demarest Borough	1	1 *	1	0	0	2,026,849	25,100
Dumont Borough	0	0 *	0	0	0	298,718	0
Elmwood Park Borough	2	2 *	0	0	0	792,441	85,740
East Rutherford Borough	0	0 *	0	0	0	201,322	22,214,200
Edgewater Borough	88	0	0	0	0	2,071,772	16,001,670
Emerson Borough	0	6 *	0	0	0	342,311	20,900
Englewood City	0	6 *	0	0	0	767,101	3,399,717
Englewood Cliffs Borough	0	0	2	0	0	198,123	716,050
Fair Lawn Borough	0	0 *	0	0	0	1,156,107	465,032
Fairview Borough	1	0 *	0	0	0	273,571	137,575
Fort Lee Borough	5	5	0	0	0	6,316,430	4,827,151
Franklin Lakes Borough	1	1 *	1	0	0	2,786,267	547,667
Garfield City	2	2	0	0	0	790,277	172,800
Glen Rock Borough	0	0 *	0	0	0	1,007,612	154,350
Hackensack City	0	0	0	6,559	0	1,076,160	1,531,694
Harrington Park Borough	0	1 *	0	0	0	125,854	0
Hasbrouck Heights Borough	No report	1 *	No report	No report	No report	No report	No report
Haworth Borough	0	0	0	0	0	164,273	20,000
Hillsdale Borough	0	0	0	0	0	355,135	69,545
Ho-Ho-Kus Borough	No report	1 *	No report	No report	No report	No report	No report
Leonia Borough	0	0 *	1	0	0	274,362	260,150
Little Ferry Borough	0	0	0	0	0	320,004	199,831
Lodi Borough	0	0	2	0	0	638,826	910,295
Lyndhurst Township	0	0	0	0	0	688,387	376,427
Mahwah Township	0	8	3	0	0	1,580,184	749,676
Maywood Borough	1	1	0	0	0	519,719	14,970
Midland Park Borough	0	0	0	0	0	390,641	128,978
Montvale Borough	1	0	4	0	0	510,496	104,600
Moonachie Borough	0	1	0	0	0	31,650	40,200
New Milford Borough	1	1 *	0	0	0	631,773	10,200
North Arlington Borough	0	0	0	0	0	327,696	94,726
Northvale Borough	0	2 *	0	0	0	129,994	18,815
Norwood Borough	0	1 *	1	0	0	119,701	68,364
Oakland Borough	2	2	0	0	0	1,237,850	90,500
Old Tappan Borough	0	1 *	0	0	0	333,135	57,900
Oradell Borough	0	0 *	0	0	0	612,616	12,766
Palisades Park Borough	7	7	11	0	0	1,290,839	1,321,150
Paramus Borough	1	1	1	0	0	1,362,200	4,155,827

**MUNICIPAL SUMMARY DATA, October 2011**

AREA NAME	AUTHORIZED	AUTHORIZED	HOUSING UNITS CERTIFIED	OFFICE SPACE	RETAIL SPACE	RESI-DENTIAL (\$ AMOUNT)	NONRESI-DENTIAL (\$ AMOUNT)
	HOUSING UNITS	HOUSING UNITS (CENSUS DEFINITIONS)		AUTHORIZED BY BUILDING PERMITS	AUTHORIZED BY BUILDING PERMITS		
Park Ridge Borough	0	6 *	0	0	0	432,772	807,024
Ramsey Borough	0	2 *	0	0	14,431	383,894	1,905,011
Ridgefield Borough	0	3 *	0	0	0	229,877	21,269,301
Ridgefield Park Village	0	0 *	0	0	0	275,727	482,750
Ridgewood Village	2	2	1	0	0	1,362,964	1,141,374
River Edge Borough	0	0 *	0	0	0	443,757	91,250
River Vale Township	0	0	1	0	0	612,063	48,500
Rochelle Park Township	0	0	1	0	0	712,624	93,100
Rockleigh Borough	0	0	0	0	0	9,300	11,950
Rutherford Borough	0	0	0	0	0	932,748	1,091,605
Saddle Brook Township	0	1 *	0	7,596	0	529,867	410,527
Saddle River Borough	1	1	4	0	0	2,912,636	67,750
South Hackensack Twp	0	0	0	0	0	10,900	9,050
Teaneck Township	1	1	1	0	0	2,031,954	926,589
Tenafly Borough	2	2	1	0	0	1,406,805	277,629
Teterboro Borough	0	0	0	0	0	0	889,200
Upper Saddle River Borough	0	0	2	0	0	1,508,598	9,200
Waldwick Borough	0	1 *	2	0	0	269,566	92,000
Wallington Borough	0	3 *	0	0	0	170,100	19,000
Washington Township	0	1 *	0	0	0	399,815	135,100
Westwood Borough	0	0	0	0	0	897,811	113,585
Woodcliff Lake Borough	0	1 *	0	0	0	456,612	442,200
Wood-Ridge Borough	0	0	0	0	0	195,777	406,150
Wyckoff Township	0	1 *	0	0	0	1,707,356	344,506
<b>Burlington County</b>							
Bass River Township	0	0 *	0	0	0	58,205	3,600
Beverly City	0	0	0	0	0	41,846	39,932
Bordentown City	0	0	2	0	0	104,380	106,400
Bordentown Township	0	0	1	0	0	316,423	148,170
Burlington City	1	1	0	0	0	481,517	12,150
Burlington Township	0	3 *	0	0	0	383,646	924,560
Chesterfield Township	1	1	1	0	0	732,977	42,600
Cinnaminson Township	0	8 *	1	0	0	329,970	735,708
Delanco Township	0	10 *	0	0	0	62,946	1,101
Delran Township	0	0 *	0	0	0	170,482	67,726
Eastampton Township	0	0	1	0	0	264,143	76,437
Edgewater Park Township	0	0 *	0	0	0	215,940	30,000
Evesham Township	1	1 *	0	9,108	0	332,862	6,049,407
Fieldsboro Borough	0	0	0	0	0	200	0
Florence Township	0	0	0	0	0	287,879	1,124,701
Hainesport Township	1	1	0	0	0	1,030,560	81,375
Lumberton Township	0	0	0	0	0	378,719	71,257
Mansfield Township	0	2 *	2	0	0	272,092	16,200
Maple Shade Borough	0	1 *	1	0	0	139,427	246,389
Medford Township	5	5	5	19,866	0	1,810,928	913,976
Medford Lakes Borough	0	1 *	0	0	0	193,287	0
Moorestown Township	0	0	0	22,435	0	1,180,541	7,712,821
Mount Holly Township	0	0	0	0	0	237,493	176,540
Mount Laurel Township	1	0	2	0	0	1,081,938	4,024,624
New Hanover Township	0	0	0	0	0	32,675	79,500
North Hanover Township	0	1 *	0	0	0	201,650	93,865
Palmyra Borough	0	1 *	0	0	0	23,806	0
Pemberton Borough	0	0	0	0	0	37,050	10,000
Pemberton Township	0	0	3	0	0	1,165,756	414,398
Riverside Township	0	0	0	0	0	127,726	35,405

**MUNICIPAL SUMMARY DATA, October 2011**

AREA NAME	AUTHORIZED	AUTHORIZED	HOUSING	OFFICE SPACE	RETAIL SPACE	RESI-	NONRESI-
	HOUSING	HOUSING UNITS		AUTHORIZED	AUTHORIZED		
	UNITS	(CENSUS	UNITS	BY BUILDING	BY BUILDING	(\$ AMOUNT)	(\$ AMOUNT)
		DEFINITIONS)	CERTIFIED	PERMITS	PERMITS		
Riverton Borough	0	1 *	0	0	0	109,820	0
Shamong Township	1	0 *	0	0	0	801,511	3,600
Southampton Township	0	1 *	2	0	0	303,210	248,750
Springfield Township	0	0 *	0	0	0	88,088	2,450
Tabernacle Township	0	0 *	0	0	0	200,870	0
Washington Township	0	0	0	0	0	23,843	0
Westampton Township	0	0	0	0	0	217,408	426,460
Willingboro Township	26	26	0	0	0	1,209,372	197,695
Woodland Township	No report	1 *	No report	No report	No report	No report	No report
Wrightstown Borough	0	0 *	0	0	0	0	600
<b>Camden County</b>							
Audubon Borough	1	1	0	0	0	356,094	257,555
Audubon Park Borough	0	0	0	0	0	8,660	0
Barrington Borough	0	0	0	0	0	287,925	12,000
Bellmawr Borough	0	0 *	0	0	0	334,435	6,300
Berlin Borough	0	0	1	0	0	125,681	63,009
Berlin Township	2	2	0	11,798	0	399,205	846,455
Brooklawn Borough	0	0	0	0	0	37,824	5,001
Camden City	0	0	0	3,100	0	809,176	727,108
Cherry Hill Township	29	29	2	0	0	4,741,615	4,309,669
Chesilhurst Borough	0	0 *	0	0	0	14,349	0
Clementon Borough	0	1 *	0	0	0	500	19,000
Collingswood Borough	0	0 *	0	0	0	243,871	50,965
Gibbsboro Borough	0	0 *	0	0	0	65,769	0
Gloucester City	0	0	0	0	0	113,567	53,805
Gloucester Township	0	0	0	0	12,000	797,701	2,057,790
Haddon Township	0	6 *	0	0	0	637,691	517,912
Haddonfield Borough	0	1 *	2	0	0	338,579	53,000
Haddon Heights Borough	0	1 *	1	0	0	129,869	492,440
Hi-nella Borough	0	0	0	0	0	17,200	4,300
Laurel Springs Borough	0	0 *	0	0	0	38,300	14,600
Lawnside Borough	0	0	0	0	0	31,929	10,900
Lindenwold Borough	0	6 *	0	0	0	108,980	124,753
Magnolia Borough	0	1 *	0	0	0	67,124	5,281
Merchantville Borough	0	0 *	0	0	0	85,746	0
Mount Ephraim Borough	0	0	0	0	0	104,759	4,200
Oaklyn Borough	0	0	0	0	0	97,460	0
Pennsauken Township	1	1	1	0	0	496,007	2,004,289
Pine Hill Borough	0	1 *	0	0	0	95,857	31,169
Pine Valley Borough	0	0 *	0	0	0	0	2,000
Runnemede Borough	0	0 *	0	0	0	154,525	500
Somerdale Borough	0	0	0	0	0	75,497	687,825
Stratford Borough	0	0	1	0	0	104,463	76,250
Tavistock Borough	0	0	0	0	0	0	0
Voorhees Township	0	0 *	1	0	0	485,752	6,706,005
Waterford Township	3	1 *	4	1,840	0	492,250	326,112
Winslow Township	8	8	3	0	0	1,414,372	1,195,860
Woodlynne Borough	0	0	0	0	0	49,049	0
<b>Cape May County</b>							
Avalon Borough	10	10	7	0	0	3,661,592	225,485
Cape May City	1	1 *	0	0	0	608,950	62,266
Cape May Point Borough	0	0	0	0	0	355,486	0
Dennis Township	1	1	0	0	0	321,888	251,300
Lower Township	0	0	1	0	0	1,002,140	285,150
Middle Township	2	3	6	0	0	491,352	331,608

**MUNICIPAL SUMMARY DATA, October 2011**

AREA NAME	AUTHORIZED	AUTHORIZED	HOUSING	OFFICE SPACE	RETAIL SPACE	RESI-	NONRESI-
	HOUSING	HOUSING UNITS	UNITS	AUTHORIZED	AUTHORIZED	DENTIAL	DENTIAL
	UNITS	(CENSUS	CERTIFIED	BY BUILDING	BY BUILDING	(\$ AMOUNT)	(\$ AMOUNT)
		DEFINITIONS)		PERMITS	PERMITS		
North Wildwood City	1	4	3	0	0	1,067,891	0
Ocean City	17	16	3	0	0	5,052,154	118,838
Sea Isle City	5	5	2	0	0	2,478,219	38,425
Stone Harbor Borough	2	2	0	0	0	2,089,669	351,360
Upper Township	0	1 *	1	0	0	210,815	132,010
West Cape May Borough	0	0	1	0	0	3,594	27,352
West Wildwood Borough	0	0	0	0	0	2,500	0
Wildwood City	0	0	11	0	0	200,327	143,201
Wildwood Crest Borough	2	2	0	0	0	777,055	596,125
Woodbine Borough	0	0	0	0	0	33,912	1,700
<b>Cumberland County</b>							
Bridgeton City	2	1 *	1	0	0	332,992	446,735
Commercial Township	0	0 *	0	2,400	0	42,575	107,100
Deerfield Township	0	0 *	0	0	0	7,300	67,550
Downe Township	0	0	0	0	0	14,615	0
Fairfield Township	0	1 *	0	0	0	9,000	19,899
Greenwich Township	0	0 *	0	0	0	19,300	750
Hopewell Township	0	0 *	0	24,930	0	132,476	496,501
Lawrence Township	0	0	0	0	0	10,105	0
Maurice River Township	0	0 *	0	0	0	119,882	72,100
Millville City	2	4 *	2	2,592	0	370,733	2,315,452
Shiloh Borough	0	0 *	0	0	0	4,900	1,000
Stow Creek Township	0	0	0	0	0	9,897	0
Upper Deerfield Township	1	1 *	1	0	0	192,123	2,206,653
Vineland City	10	9	6	11,430	0	1,161,021	4,440,552
<b>Essex County</b>							
Belleville Town	0	0	1	0	0	686,394	115,150
Bloomfield Township	0	0 *	0	0	0	567,053	0
Caldwell Township	0	0 *	0	0	0	299,112	23,050
Cedar Grove Township	0	6 *	0	0	0	303,638	150,150
East Orange City	0	0	0	0	0	601,846	675,710
Essex Fells Township	0	1 *	0	0	0	135,423	2,500
Fairfield Township	0	0	0	0	0	501,337	1,068,205
Glen Ridge Borough	1	1 *	0	0	0	563,252	0
Irvington Township	0	3 *	0	0	0	213,925	693,495
Livingston Township	0	0	0	0	0	2,243,338	677,163
Maplewood Township	0	0 *	0	0	0	249,707	32,435
Millburn Township	3	3	2	36,338	0	3,809,116	13,956,353
Montclair Township	0	0 *	0	0	0	1,617,275	55,500
Newark City	0	0	48	3,128	0	1,173,640	5,481,181
North Caldwell Borough	12	12	4	0	0	2,473,505	8,728
Nutley Township	0	1 *	1	0	0	715,973	318,151
City of Orange Township	No report	11 *	No report	No report	No report	No report	No report
Roseland Borough	0	1 *	0	0	0	113,198	2,739,004
South Orange Village	0	0	0	0	0	579,655	38,713
Verona Township	0	1 *	0	2,266	0	574,647	416,300
West Caldwell Township	1	1	1	0	0	575,453	1,388,846
West Orange Township	0	0	9	0	0	789,898	571,126
<b>Gloucester County</b>							
Clayton Borough	0	0	0	0	0	312,079	111,441
Deptford Township	9	9	8	0	0	1,361,698	1,082,080
East Greenwich Township	3	3	6	0	0	1,034,084	212,075
Elk Township	0	0	0	0	0	16,470	82,059
Franklin Township	0	1 *	1	0	0	216,807	1,068,173
Glassboro Borough	0	10 *	3	0	0	308,748	47,000

**MUNICIPAL SUMMARY DATA, October 2011**

AREA NAME	AUTHORIZED	AUTHORIZED	HOUSING	OFFICE SPACE	RETAIL SPACE	RESI-	NONRESI-
	HOUSING	HOUSING UNITS		AUTHORIZED	AUTHORIZED		
	UNITS	(CENSUS	UNITS	BY BUILDING	BY BUILDING	(\$ AMOUNT)	(\$ AMOUNT)
		DEFINITIONS)	CERTIFIED	PERMITS	PERMITS		
Greenwich Township	0	0 *	0	0	0	105,024	567,970
Harrison Township	5	5	2	0	0	1,684,608	93,535
Logan Township	1	1 *	0	825	0	1,021,021	1,842,916
Mantua Township	0	0 *	0	0	0	1,975	0
Monroe Township	1	1	6	0	0	635,331	119,280
National Park Borough	0	0	0	0	0	76,150	56,809
Newfield Borough	0	0 *	0	0	0	19,079	0
Paulsboro Borough	0	0 *	0	0	0	148,500	1,000
Pitman Borough	0	0 *	0	0	0	345,460	78,029
South Harrison Township	0	0	0	0	0	117,890	50,550
Swedesborough Borough	0	4 *	0	0	0	0	66,853
Washington Township	0	0	0	0	0	1,214,125	434,263
Wenonah Borough	0	0	0	0	0	91,250	31,600
West Deptford Township	0	0	0	0	0	628,397	1,835,625
Westville Borough	0	0	0	1,581	0	38,310	246,230
Woodbury City	0	0	0	0	0	150,921	42,276
Woodbury Heights Borough	0	0	0	0	0	41,880	27,950
Woolwich Township	5	5	5	0	0	702,124	187,304
<b>Hudson County</b>							
Bayonne City	0	6 *	0	0	0	1,523,045	403,988
East Newark Borough	0	0	0	0	0	10,150	0
Guttenberg Town	0	0	0	0	0	131,200	150,938
Harrison Town	0	0	0	0	0	455,065	908,201
Hoboken City	4	21 *	12	0	0	2,446,771	350,648
Jersey City	5	12	524	0	0	3,350,336	5,664,317
Kearny Town	0	0 *	3	0	0	625,782	404,557
North Bergen Township	0	0	0	0	0	681,120	1,125,686
Secaucus Town	2	30 *	1	0	0	859,838	7,774,685
Union City	2	0 *	0	0	0	551,562	824,344
Weehawken Township	0	0 *	0	0	0	431,320	902,149
West New York Town	125	0 *	0	0	0	16,876,873	78,115
<b>Hunterdon County</b>							
Alexandria Township	0	0	0	0	0	237,125	342,819
Bethlehem Township	0	0	0	0	0	60,742	14,825
Bloomsbury Borough	0	0	0	0	0	12,163	0
Califon Borough	0	0	0	0	0	28,651	1,500
Clinton Town	0	0 *	0	0	0	108,376	24,300
Clinton Township	0	0	0	9,500	0	374,499	74,921
Delaware Township	0	0 *	1	0	0	167,161	437,210
East Amwell Township	0	0 *	0	0	0	156,497	12,180
Flemington Borough	0	5 *	0	0	0	76,303	685,748
Franklin Township	0	1 *	0	0	0	107,312	358,350
Frenchtown Borough	0	0	0	0	0	188,342	2,902
Glen Gardner Borough	0	0	0	0	0	46,610	10,000
Hampton Borough	0	0	0	0	0	20,494	0
High Bridge Borough	0	0	0	0	0	113,863	1,000
Holland Township	0	0	0	0	0	157,636	303,267
Kingwood Township	0	1 *	0	0	0	156,878	15,867
Lambertville City	0	0	0	1	0	454,431	137,848
Lebanon Borough	0	13 *	0	0	0	52,600	10,800
Lebanon Township	0	0	0	0	0	141,055	27,004
Milford Borough	0	0	0	0	0	68,534	0
Raritan Township	1	1	1	3,710	0	1,316,127	1,673,605
Readington Township	1	1	1	0	0	727,799	274,453
Stockton Borough	0	0 *	0	0	0	6,550	4,901

**MUNICIPAL SUMMARY DATA, October 2011**

AREA NAME	AUTHORIZED	AUTHORIZED	HOUSING	OFFICE SPACE	RETAIL SPACE	RESI-	NONRESI-
	HOUSING	HOUSING UNITS	UNITS	AUTHORIZED	AUTHORIZED	DENTIAL	DENTIAL
	UNITS	(CENSUS	CERTIFIED	BY BUILDING	BY BUILDING	(\$ AMOUNT)	(\$ AMOUNT)
		DEFINITIONS)		PERMITS	PERMITS		
Tewksbury Township	0	0	1	0	0	334,292	30,500
Union Township	0	0	0	0	0	123,610	3,000
West Amwell Township	0	0	0	0	0	367,279	25,378
<b>Mercer County</b>							
East Windsor Township	0	0	1	0	0	538,909	236,551
Ewing Township	0	0	0	445	0	4,282,627	1,449,879
Hamilton Township	62	4 *	6	13,932	0	4,328,331	2,391,540
Hightstown Borough	0	0	0	0	0	138,417	6,400
Hopewell Borough	0	0	0	0	0	151,407	219,100
Hopewell Township	0	0	1	0	0	802,620	1,797,496
Lawrence Township	0	0	0	0	0	1,971,390	8,115,269
Pennington Borough	1	1	0	0	0	479,722	118,597
Princeton Borough	1	1	1	212	0	1,316,068	7,260,195
Princeton Township	0	0 *	1	0	0	2,528,382	12,855,322
Trenton City	4	0	24	2,016	0	2,145,797	1,568,749
Robbinsville Township	1	6 *	2	0	0	583,558	6,259,771
West Windsor Township	10	27 *	3	0	0	3,831,009	3,095,129
<b>Middlesex County</b>							
Carteret Borough	0	16 *	0	0	0	726,321	7,975,215
Cranbury Township	0	0	0	0	0	167,539	158,795
Dunellen Borough	0	1 *	0	0	0	69,713	14,000
East Brunswick Township	0	0	4	0	0	1,407,806	1,238,408
Edison Township	2	2	5	0	0	2,842,363	5,251,041
Helmetta Borough	0	0	0	0	0	123,021	500
Highland Park Borough	0	1 *	10	0	0	300,625	211,247
Jamesburg Borough	0	0	0	0	0	83,768	35,230
Old Bridge Township	1	1	6	0	0	1,681,699	272,375
Metuchen Borough	1	1	0	0	4,800	657,141	190,860
Middlesex Borough	0	0	1	0	0	566,521	325,665
Milltown Borough	0	1 *	0	0	0	332,545	6,500
Monroe Township	22	22	30	3,300	0	5,949,955	2,314,142
New Brunswick City	0	9 *	0	0	0	894,772	9,792,270
North Brunswick Township	8	0 *	5	14,820	0	1,642,977	2,380,380
Perth Amboy City	0	0	0	0	0	453,696	1,742,663
Piscataway Township	36	36	5	0	0	2,173,057	3,673,812
Plainsboro Township	0	0	0	0	0	669,726	4,830,942
Sayreville Borough	6	6	7	0	0	748,935	381,076
South Amboy City	0	0	0	0	0	116,079	32,845
South Brunswick Township	4	4	6	0	0	2,584,316	2,030,934
South Plainfield Borough	1	1	15	0	0	248,721	1,854,362
South River Borough	0	0	0	0	0	262,703	2,831
Spotswood Borough	0	1 *	0	0	0	160,088	13,950
Woodbridge Township	4	0	0	0	8,000	2,599,522	4,716,571
<b>Monmouth County</b>							
Allenhurst Borough	0	0	0	0	0	77,540	6,500
Allentown Borough	0	0	0	0	0	73,471	8,000
Asbury Park City	0	0 *	0	0	0	216,701	50,700
Atlantic Highlands Borough	1	1	0	0	0	546,206	0
Avon-by-the-Sea Borough	0	1 *	0	0	0	543,525	0
Belmar Borough	1	1	0	0	0	786,609	66,600
Bradley Beach Borough	0	1 *	0	0	0	160,725	0
Brielle Borough	1	1	0	0	0	360,147	73,100
Colts Neck Township	1	1	2	0	0	1,133,434	95,401
Deal Borough	2	1	0	0	0	4,004,864	1,500
Eatontown Borough	1	1	0	0	0	338,162	1,454,342

**MUNICIPAL SUMMARY DATA, October 2011**

AREA NAME	AUTHORIZED	AUTHORIZED	HOUSING	OFFICE SPACE	RETAIL SPACE	RESI-	NONRESI-
	HOUSING	HOUSING UNITS	UNITS	AUTHORIZED	AUTHORIZED	DENTIAL	DENTIAL
	UNITS	(CENSUS	CERTIFIED	BY BUILDING	BY BUILDING	(\$ AMOUNT)	(\$ AMOUNT)
		DEFINITIONS)		PERMITS	PERMITS		
Englishtown Borough	0	0	0	0	14,740	50,974	929,700
Fair Haven Borough	0	0	1	0	0	249,467	190,000
Farmingdale Borough	0	0	0	0	0	10,220	9,900
Freehold Borough	0	0 *	0	0	0	154,986	47,000
Freehold Township	0	0	1	0	0	1,434,907	1,482,550
Highlands Borough	0	0 *	0	0	0	1,321,050	0
Holmdel Township	0	0	0	0	0	1,072,904	515,033
Howell Township	3	3	2	0	0	1,766,138	576,640
Interlaken Borough	0	0	0	0	0	39,122	0
Keansburg Borough	0	0	0	0	0	149,383	3,125
Keyport Borough	0	1 *	0	0	0	202,555	252,964
Little Silver Borough	0	1 *	2	0	0	200,087	140,910
Loch Arbour Village	0	0	0	0	0	16,900	2,000
Long Branch City	2	2	7	0	0	812,629	482,867
Manalapan Township	42	4 *	21	0	0	5,758,370	477,968
Manasquan Borough	1	1	1	0	0	1,082,022	41,138
Marlboro Township	19	19	5	0	0	2,837,353	236,705
Matawan Borough	1	1 *	0	0	0	481,746	12,805
Aberdeen Township	13	12	0	0	9,066	1,658,052	1,014,380
Middletown Township	1	1	6	0	0	4,136,891	737,522
Millstone Township	0	0 *	0	0	0	271,564	186,533
Monmouth Beach Borough	1	0	0	0	0	171,710	43,000
Neptune Township	0	0	0	0	0	924,624	644,002
Neptune City Borough	0	0	0	0	0	105,740	108,460
Tinton Falls Borough	0	2 *	0	0	0	680,613	425,588
Ocean Township	1	1	0	1,176	0	890,368	808,130
Oceanport Borough	0	0	0	0	0	140,996	61,550
Hazlet Township	0	0	0	1,575	0	148,034	695,735
Red Bank Borough	4	3	0	0	0	917,704	648,172
Roosevelt Borough	0	0 *	0	0	0	10,750	0
Rumson Borough	3	3	1	0	0	2,754,365	27,394
Sea Bright Borough	0	1 *	0	0	0	118,779	13,137
Sea Girt Borough	3	3	1	0	0	3,571,451	30,800
Shrewsbury Borough	5	5	1	0	0	773,979	206,678
Shrewsbury Township	0	0 *	0	0	0	200	0
Lake Como Borough	1	0 *	0	0	0	211,390	10,800
Spring Lake Borough	0	0	2	0	0	1,817,913	291,684
Spring Lake Heights Boro	0	0	0	2	0	146,815	53,500
Union Beach Borough	0	0	1	0	0	51,625	23,000
Upper Freehold Township	4	4	0	0	0	551,530	97,492
Wall Township	3	3	4	0	0	1,637,584	496,177
West Long Branch Borough	No report	11 *	0	No report	No report	No report	No report
<b>Morris County</b>							
Boonton Town	0	1 *	1	0	0	180,568	33,980
Boonton Township	0	1 *	2	0	0	205,378	1,200
Butler Borough	0	0	0	0	0	117,824	78,950
Chatham Borough	0	1 *	0	0	0	345,330	12,700
Chatham Township	3	2 *	0	0	0	2,772,870	44,500
Chester Borough	0	1 *	0	0	0	10,838	14,000
Chester Township	0	0 *	0	0	0	474,226	86,300
Denville Township	0	1 *	0	0	0	1,691,690	785,502
Dover Town	0	0 *	1	0	0	161,598	337,818
East Hanover Township	1	1 *	0	0	0	862,667	3,764,907
Florham Park Borough	4	4	3	19,620	0	1,704,555	6,214,594
Hanover Township	1	2 *	4	0	0	632,326	1,392,843

**MUNICIPAL SUMMARY DATA, October 2011**

AREA NAME	AUTHORIZED	AUTHORIZED	HOUSING	OFFICE SPACE	RETAIL SPACE	RESI-	NONRESI-
	HOUSING	HOUSING UNITS	UNITS	AUTHORIZED	AUTHORIZED	DENTIAL	DENTIAL
	UNITS	(CENSUS	CERTIFIED	BY BUILDING	BY BUILDING	(\$ AMOUNT)	(\$ AMOUNT)
		DEFINITIONS)		PERMITS	PERMITS		
Harding Township	0	0	1	0	0	290,817	60,625
Jefferson Township	2	0 *	0	5,331	0	672,078	1,460,225
Kinnelon Borough	3	3	2	0	0	1,312,435	0
Lincoln Park Borough	0	0	0	0	0	998,251	26,002
Madison Borough	2	2	3	0	0	1,610,495	862,701
Mendham Borough	0	0	0	0	0	352,154	58,041
Mendham Township	0	0	0	0	0	629,689	9,050
Mine Hill Township	0	0 *	0	0	0	109,638	160,000
Montville Township	0	0	3	0	0	552,486	140,600
Morris Township	1	3 *	0	0	0	2,535,065	1,058,654
Morris Plains Borough	0	5 *	0	0	0	261,585	13,950
Morristown Town	0	0	1	0	0	523,384	1,302,844
Mountain Lakes Borough	1	2 *	0	0	0	875,399	330,467
Mount Arlington Borough	0	1 *	0	0	0	70,471	27,600
Mount Olive Township	9	2 *	6	0	0	1,653,570	1,423,025
Netcong Borough	0	0 *	0	0	0	40,850	10,420
Parsippany-Troy Hills Twp	0	0	1	0	0	1,764,414	4,069,700
Long Hill Township	0	0	0	0	0	355,463	24,827
Pequannock Township	1	1	1	0	0	2,209,524	256,346
Randolph Township	0	0	1	0	0	978,526	159,078
Riverdale Borough	0	0	0	0	0	155,739	11,300
Rockaway Borough	0	0	0	0	0	92,366	29,405
Rockaway Township	0	1 *	0	0	0	1,921,619	187,478
Roxbury Township	2	2	1	0	0	591,032	315,197
Victory Gardens Borough	0	0	0	0	0	8,300	0
Washington Township	1	1	2	0	0	1,929,530	212,175
Wharton Borough	0	0 *	0	0	0	77,128	61,350
<b>Ocean County</b>							
Barneгат Light Borough	0	0	0	0	0	42,520	1,265
Bay Head Borough	0	0	0	0	0	325,290	0
Beach Haven Borough	5	5	1	0	0	2,513,858	41,100
Beachwood Borough	0	0	0	0	0	216,513	5,400
Berkeley Township	2	2	5	0	0	1,213,885	23,855
Brick Township	2	4 *	3	6,816	18,440	5,524,557	2,448,022
Toms River Township	7	3	55	28,310	0	5,195,460	4,574,802
Eagleswood Township	0	1 *	0	0	0	22,490	2,450
Harvey Cedars Borough	2	2	0	0	0	738,567	3,900
Island Heights Borough	0	0	0	0	0	156,507	4,875
Jackson Township	17	15	5	0	0	3,795,580	686,955
Lacey Township	3	3	1	0	2,993	1,178,125	235,684
Lakehurst Borough	0	0	1	0	0	38,241	45,000
Lakewood Township	4	0	20	0	24,074	1,826,800	4,671,856
Lavallette Borough	3	3	0	0	0	1,398,444	55,000
Little Egg Harbor Township	3	3	3	0	0	820,620	136,789
Long Beach Township	12	12	2	0	0	8,258,808	0
Manchester Township	5	0 *	4	0	0	2,199,841	101,578
Mantoloking Borough	0	0 *	0	0	0	964,873	0
Ocean Township	4	4	7	0	0	822,944	150
Ocean Gate Borough	1	1	0	0	0	465,796	50,000
Pine Beach Borough	0	0 *	0	0	0	45,094	0
Plumsted Township	0	1 *	0	0	0	175,374	264,865
Point Pleasant Borough	2	2	1	446	0	1,094,897	475,630
Point Pleasant Beach Boro	0	0	0	0	0	253,862	254,903
Seaside Heights Borough	0	0	0	0	0	50,872	500
Seaside Park Borough	No report	1 *	No report	No report	No report	No report	No report

**MUNICIPAL SUMMARY DATA, October 2011**

AREA NAME	AUTHORIZED	AUTHORIZED	HOUSING	OFFICE SPACE	RETAIL SPACE	RESI-	NONRESI-
	HOUSING	HOUSING UNITS	UNITS	AUTHORIZED	AUTHORIZED	DENTIAL	DENTIAL
	UNITS	(CENSUS	CERTIFIED	BY BUILDING	BY BUILDING	(\$ AMOUNT)	(\$ AMOUNT)
		DEFINITIONS)		PERMITS	PERMITS		
Ship Bottom Borough	1	1	0	0	0	149,431	7,300
South Toms River Borough	0	0	0	0	0	33,360	83,000
Stafford Township	50	50	7	0	0	5,149,912	879,609
Surf City Borough	1	1	1	0	0	557,138	97,850
Tuckerton Borough	0	0 *	0	0	0	0	81,933
Barnegat Township	4	4	6	5,779	0	999,406	282,341
<b>Passaic County</b>							
Bloomington Borough	0	0	0	0	0	616,740	46,975
Clifton City	1	1	2	799	0	1,964,256	1,480,962
Haledon Borough	0	6 *	0	0	0	122,129	0
Hawthorne Borough	0	0	0	0	0	429,169	52,203
Little Falls Township	0	0	0	0	0	646,293	1,639,438
North Haledon Borough	0	0	0	0	0	196,598	13,300
Passaic City	0	0 *	0	0	0	541,307	249,613
Paterson City	No report	7 *	No report	No report	No report	No report	No report
Pompton Lakes Borough	0	1 *	0	0	0	1,313,190	11,265
Prospect Park Borough	0	0 *	0	0	0	56,100	0
Ringwood Borough	0	1 *	1	0	0	468,083	411,725
Totowa Borough	0	1 *	0	0	0	555,236	602,052
Wanaque Borough	0	0	4	0	0	267,511	20,070
Wayne Township	1	1	1	0	0	3,427,361	2,720,928
West Milford Township	1	1	3	0	0	951,988	327,446
Woodland Park Borough	0	11 *	2	2,938	0	217,693	730,851
<b>Salem County</b>							
Alloway Township	0	0	3	0	0	36,000	67,000
Elmer Borough	1	1	0	0	0	301,476	1,200
Elsinboro Township	1	1	0	0	0	144,300	31,000
Lower Alloways Creek Twp	0	0	0	0	0	5,933	207,200
Mannington Township	0	0	0	0	0	13,001	468,900
Oldmans Township	3	3	4	0	0	340,500	69,180
Penns Grove Borough	0	0	0	0	0	12,050	90,200
Pennsville Township	0	0	0	0	0	225,743	505,025
Pilesgrove Township	0	0	0	0	0	77,656	128,900
Pittsgrove Township	0	0	3	0	0	71,600	136,686
Quinton Township	0	0	0	0	0	75,805	0
Salem City	0	6 *	0	0	0	20,200	17,202
Carneys Point Township	1	1	0	0	0	218,365	290,980
Upper Pittsgrove Township	0	0	3	0	0	62,640	101,017
Woodstown Borough	0	0	0	0	0	66,781	0
<b>Somerset County</b>							
Bedminster Township	0	0	0	0	0	269,111	436,185
Bernards Township	1	1	2	0	0	1,886,496	177,076
Bernardsville Borough	1	1 *	0	0	0	1,534,350	214,600
Bound Brook Borough	2	2	1	0	0	777,954	97,916
Branchburg Township	1	1	0	0	0	763,071	1,159,336
Bridgewater Township	0	0	0	0	0	1,499,673	4,141,498
Far Hills Borough	0	0 *	0	0	0	930,641	125,000
Franklin Township	13	13	3	9,996	0	3,424,399	1,587,142
Green Brook Township	0	0	0	0	0	122,692	7,300
Hillsborough Township	2	6 *	3	0	0	3,717,651	670,761
Manville Borough	1	1	0	0	0	382,462	33,499
Millstone Borough	0	0	0	0	0	124,600	51,400
Montgomery Township	2	2	1	0	0	1,256,322	2,575,911
North Plainfield Borough	0	0 *	0	0	0	330,621	35,830
Peapack-Gladstone Boro	0	0 *	0	0	0	89,492	141,035

**MUNICIPAL SUMMARY DATA, October 2011**

AREA NAME	AUTHORIZED	AUTHORIZED	HOUSING	OFFICE SPACE	RETAIL SPACE	RESI-	NONRESI-
	HOUSING	HOUSING UNITS		AUTHORIZED	AUTHORIZED		
	UNITS	(CENSUS	UNITS	BY BUILDING	BY BUILDING	(\$ AMOUNT)	(\$ AMOUNT)
		DEFINITIONS)	CERTIFIED	PERMITS	PERMITS		
Raritan Borough	0	6 *	0	0	0	188,002	175,800
Rocky Hill Borough	1	1	0	0	0	252,287	117,513
Somerville Borough	0	0 *	0	0	0	318,930	840,197
South Bound Brook Boro	0	3 *	0	0	0	126,817	0
Warren Township	10	1	1	0	0	3,299,218	735,743
Watchung Borough	0	0	0	0	0	74,520	40,610
<b>Sussex County</b>							
Andover Borough	0	0	0	0	0	3,500	0
Andover Township	0	1 *	1	0	0	213,200	197,400
Branchville Borough	0	0	0	0	0	46,875	5,781
Byram Township	0	0 *	0	0	0	387,083	117,165
Frankford Township	0	1 *	0	0	0	278,279	65,900
Franklin Borough	0	0 *	0	0	0	82,167	25,518
Fredon Township	0	0	0	0	0	186,366	6,250
Green Township	0	2 *	1	0	0	8,000	135,445
Hamburg Borough	0	0	0	0	0	149,158	19,500
Hampton Township	0	0	0	0	0	184,205	2,700
Hardyston Township	2	1	1	0	0	398,722	88,651
Hopatcong Borough	0	1 *	0	0	0	303,591	17,785
Lafayette Township	10	10	0	0	0	1,265,774	11,100
Montague Township	0	2 *	1	0	0	34,300	122,000
Newton Town	0	0 *	45	0	0	170,163	338,502
Ogdensburg Borough	0	0 *	0	0	0	21,900	0
Sandyston Township	0	0	1	0	0	87,310	12,600
Sparta Township	0	3 *	2	0	0	1,751,319	172,950
Stanhope Borough	0	0 *	0	0	0	75,929	0
Stillwater Township	0	1 *	0	0	0	91,167	2,000
Sussex Borough	0	0 *	0	0	0	39,650	6,700
Vernon Township	0	1 *	0	0	0	503,470	179,850
Walpack Township	0	0 *	0	0	0	0	0
Wantage Township	0	6 *	0	0	0	194,528	477,778
<b>Union County</b>							
Berkeley Heights Township	0	1 *	0	0	2,304	863,187	360,201
Clark Township	1	1	0	0	0	538,502	680,300
Cranford Township	2	2	1	0	0	5,486,144	479,577
Elizabeth City	7	2	0	0	0	822,816	1,727,281
Fanwood Borough	24	1 *	0	0	0	2,687,962	44,220
Garwood Borough	0	2 *	0	0	0	108,457	646,390
Hillside Township	No report	0 *	No report	No report	No report	No report	No report
Kenilworth Borough	0	0	0	0	0	278,962	90,391
Linden City	2	2	0	0	0	726,170	488,564
Mountainside Borough	0	0 *	0	0	0	356,939	28,160
New Providence Borough	0	2 *	0	0	0	1,504,049	400,972
Plainfield City	0	0	0	0	0	772,257	46,179
Rahway City	1	1	0	0	0	1,490,845	252,550
Roselle Borough	0	0	0	0	0	351,384	285,851
Roselle Park Borough	0	1 *	0	0	0	273,986	89,773
Scotch Plains Township	0	1 *	1	0	0	1,105,076	53,833
Springfield Township	0	23 *	0	0	0	213,535	33,682
Summit City	0	25	2	3,078	0	3,651,437	1,991,414
Union Township	1	1	1	0	0	1,231,780	28,300,947
Westfield Town	4	4	0	0	0	2,806,754	839,788
Winfield Township	0	0	0	0	0	0	0
<b>Warren County</b>							
Allamuchy Township	0	0	1	0	0	0	149,870

**MUNICIPAL SUMMARY DATA, October 2011**

AREA NAME	AUTHORIZED	AUTHORIZED	HOUSING UNITS CERTIFIED	OFFICE SPACE	RETAIL SPACE	RESI- DENTIAL (\$ AMOUNT)	NONRESI- DENTIAL (\$ AMOUNT)
	HOUSING UNITS	HOUSING UNITS (CENSUS DEFINITIONS)		AUTHORIZED BY BUILDING PERMITS	AUTHORIZED BY BUILDING PERMITS		
Alpha Borough	0	0	0	0	0	65,610	5,000
Belvidere Town	0	0 *	0	0	0	58,038	80,670
Blairstown Township	0	0	0	0	0	168,855	31,400
Franklin Township	2	2	0	0	0	149,187	69,700
Frelinghuysen Township	0	0	0	0	0	2,500	188,900
Greenwich Township	0	0	0	0	0	161,811	42,181
Hackettstown Town	0	3 *	0	0	0	7,935	360,015
Hardwick Township	1	1	0	0	0	115,100	0
Harmony Township	0	0	0	0	0	108,760	7,360
Hope Township	0	0	0	0	0	64,300	0
Independence Township	0	1 *	0	0	0	199,976	6,360
Knowlton Township	0	0	0	0	0	39,225	76,500
Liberty Township	0	0 *	0	0	0	55,100	22,250
Lopatcong Township	2	1 *	4	0	0	461,354	35,825
Mansfield Township	0	0	0	0	0	179,358	9,250
Oxford Township	0	0	0	0	0	24,800	0
Pahaquary Township	See Hardwick Twp.						
Phillipsburg Town	0	1 *	0	0	0	273,164	190,947
Pohatcong Township	No report	0 *	No report	No report	No report	No report	No report
Washington Borough	4	4	4	1	0	662,607	47,057
Washington Township	0	0	0	0	2,295	157,211	145,425
White Township	0	0	0	0	0	156,225	94,380
State Buildings	0		0	0	0	240,000	35,077,923

\* Data imputed by the U.S. Census Bureau.

*The New Jersey*  
**CONSTRUCTION REPORTER**  
**OCTOBER 2011 DATA**

DISTRIBUTED BY THE

*New Jersey Department of*  
**COMMUNITY AFFAIRS**  
DIVISION OF CODES AND STANDARDS  
101 South Broad Street,  
PO Box 802  
Trenton, NJ 08625-0802  
(609) 292-7898  
[www.nj.gov/dca/divisions/codes/reporter/](http://www.nj.gov/dca/divisions/codes/reporter/)



*In cooperation with the*  
**STATE DATA CENTER of the**  
**NEW JERSEY DEPARTMENT OF LABOR AND**  
**WORKFORCE DEVELOPMENT**

---

*Production and Distribution Staff*

**RICHARD BYRNE**  
**CYNTHIA CORDERO**  
**LYNN FERRARA**  
**AMY FENWICK FRANK**  
**JOHN LAGO**  
**CHARLES PIERSON, JR.**  
**ANTHONY SCHIAVINO**  
**SUSAN WOIDILL**

**2011**