

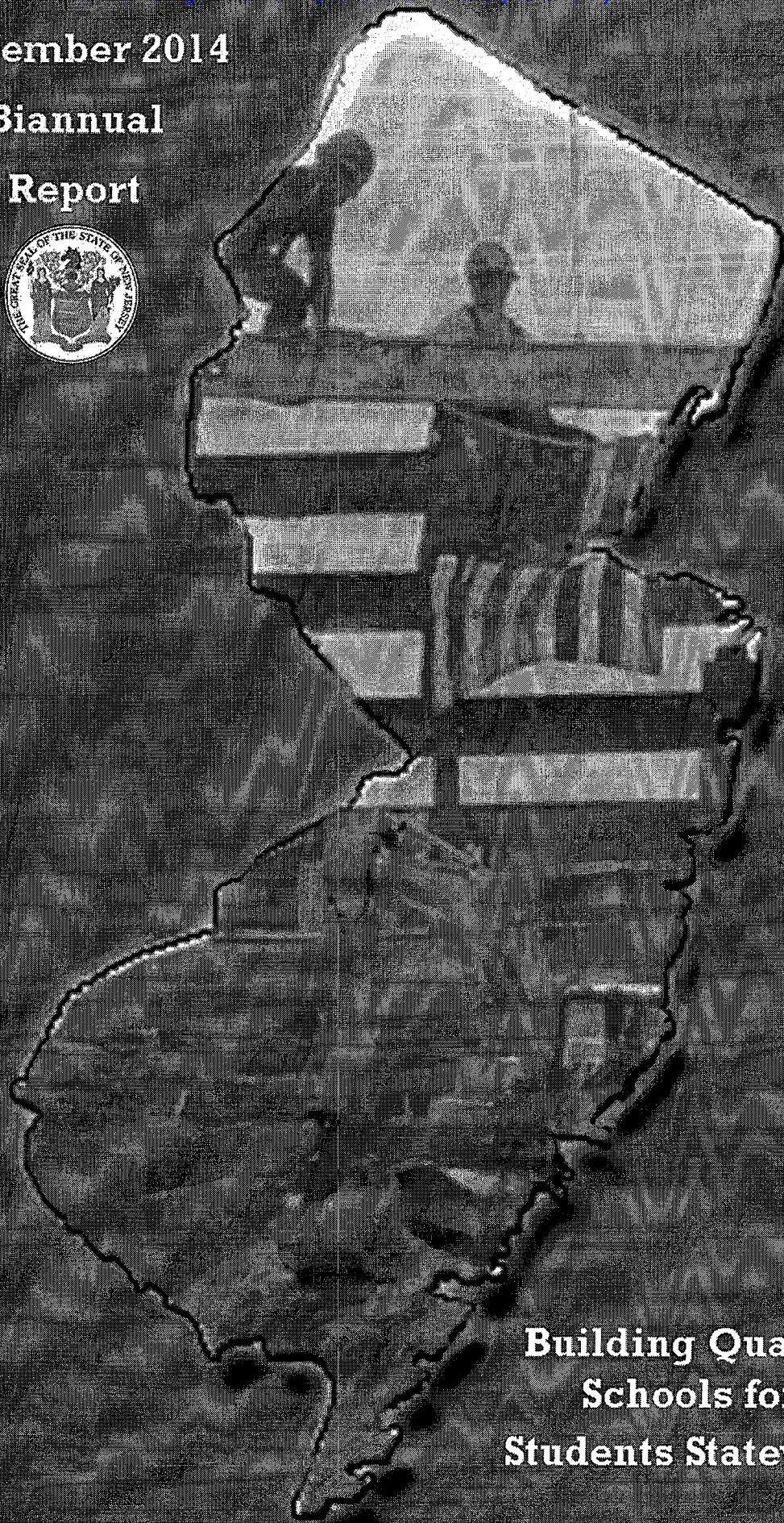
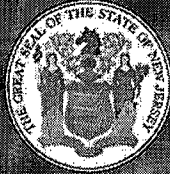
By

APPENDIX

December 2014

Biannual

Report



**Building Quality
Schools for
Students Statewide**

S
C
H
O
O
L
S

D
E
V
E
L
O
P
M
E
N
T

A
U
T
H
O
R
I
T
Y

SDA Board Members

Public Members



Edward Walsh, SDA Chairman
*Principal and Managing Director,
Avison Young*



Michael Capelli
*Executive Secretary-Treasurer,
NJ Regional Council of Carpenters*



Kevin Egan
Business Representative, I.B.E.W. Local 456



Lester Lewis-Powder
Executive Director, Let's Celebrate, Inc.



Loren P. Lemelle
Retired Executive, Johnson and Johnson



Michael Maloney
*Business Manager/ Financial Secretary, Plumbers
& Pipefitters Local Union No. 9
President, Mercer County Central Labor Council*



Joseph McNamara
Director, LECHET & Health and Safety



Robert Nixon
*Director of Government Affairs,
NJ State Policeman's Benevolent Assn.*



Mario Vargas
Farmers Insurance

Ex-Officio Members



Michele Brown
*Chief Executive Officer, New Jersey Economic
Development Authority*



Richard E. Constable, III
*Commissioner, New Jersey Department of
Community Affairs*



David C. Hespe
*Acting Commissioner, New Jersey Department of
Education*



Andrew P. Sidamon-Eristoff
*State Treasurer, New Jersey Department of the
Treasury*

Our mission is to deliver
high-quality educational
facilities that best meet the
needs of the students of
the State of New Jersey.

While providing
efficiently designed
facilities that enhance the
academic environment, we
promote fiscal
responsibility in the
management of taxpayers'
resources.

SDA Executive Staff

Charles B. McKenna
Chief Executive Officer

Jason E. Ballard
Chief of Staff

Andrew D. Yosha
Executive Vice President – Program Operations and Strategic Planning

Donald R. Guarriello
Vice President and Chief Financial Officer

Jane F. Kelly
Vice President – Corporate Governance and Operations

Raymond A. Arcario
Vice President – Construction Operations



Message from CEO Charles B. McKenna



The last six months at SDA have been marked by a flurry of activity. In two districts, students started their school-year in new surroundings this September. First, we completed all the work on the four Trenton Central High School swing space buildings where school opened on time and without any disruptions whatsoever. In Long Branch, approximately 800 children populated the George L. Catrambone School on the first day of school. In late September, Governor Christie joined me in a ribbon cutting ceremony at the school where the smiles on the faces of the children were, as they say in the commercial . . . priceless. In addition, in November, the SDA turned over the new Redshaw Elementary School to the New Brunswick School District so that approximately 900 students can begin their education there soon.

Ground was broken this summer for the Quarter Mile Lane School and Buckshutem School renovations in Bridgeton. Steel began to rise above the Marshall Street School in Paterson as well as the Elliott and Oliver Street schools in Newark. Steel work was completed at Elizabeth Academic High School, P.S. 20 in Jersey City and the Henry Street Elementary School in Passaic. Emergent work on Public School Number 1 and Public School Number 5 in West New York also neared completion.

Our current portfolio represents the best the SDA has to offer. We are designing, renovating and constructing buildings on-time and on-budget and thousands of children will benefit from our work. But there is still much to do. In the coming months, we will embark on a new Trenton Central High School, while continuing work on School 16 in Paterson, Caruso Elementary School in Keansburg and Elementary School Number 3 in Jersey City. Demolition work is ongoing for a new James Madison Elementary School in Garfield and site work is ongoing to prepare the land for a new South Street School in Newark. All of this is against the backdrop of emergent projects that we continue to either manage or oversee with individual districts.

SDA is diligently working with Districts across the State to address their ongoing needs. The planning process is active and underway for approved projects in Camden, Perth Amboy, Passaic, Irvington and other areas across the State. All of this is being done with an eye towards carrying out the Governor's mandate that every child receive a quality education in this State regardless of their zip code. It is a pleasure to be a part of that process.

Sincerely,

Charles B. McKenna

14X

Providing Schools That Enhance Educational Opportunities

Twelve Schools In Construction

From Bridgeton in the South to Paterson in the North, at the end of the reporting period there were a dozen projects in construction throughout the state. Representing more than \$693 million in total project costs, these 12 schools will provide first class educational facilities to approximately 10,000 New Jersey students. These projects will not only benefit our students, but they also help to strengthen New Jersey's construction industry, boosting the Garden State economy and creating jobs.



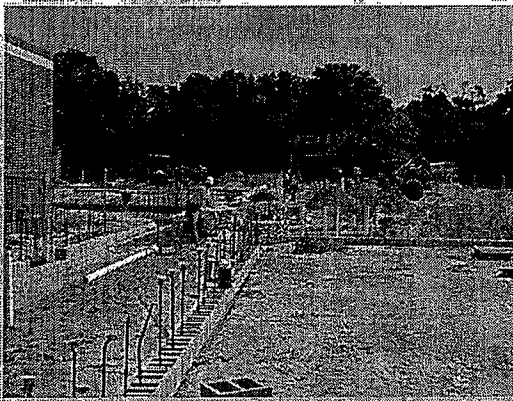
During the reporting period, significant progress was made on these projects, highlighted by multiple events to celebrate the continued advancement of work. Students in Elizabeth signed their names to a steel beam in July, permanently making a mark on their new school. Immediately following, those present watched as the beam was hoisted into place topping off and completing the steel erection of the new 183,000 square-foot Academic High School facility. Ground was broken on two addition/renovation projects in Bridgeton and the new Marshall Street Elementary School in Paterson. Students in Newark also participated in a beam signing ceremony for the new Elliott Street School.

Work on these projects is moving ahead at a rapid pace. The SDA's new way of doing business is proving effective as all twelve projects are currently advancing within their budgets and consistent with the schedules approved in their final charters, something that was not often achieved under previous administrations. SDA is working closely with our construction partners to ensure that these projects will continue to move forward as planned and be open for student occupancy as scheduled. SDA's projects in active construction at the end of the reporting period include:

- Bridgeton Buckshutem Road E.S.
- Bridgeton Quarter Mile Lane E.S.
- Elizabeth Academic H.S.
- Jersey City PS #20
- Keansburg Caruso E.S.
- New Brunswick Redshaw E.S.
- Newark Elliott Street E.S.
- Newark Oliver Street E.S.
- Passaic City Henry Street E.S.
- Paterson Marshall Street E.S.
- Paterson School #16
- Phillipsburg H.S.

X-5X

Building Schools Statewide



Bridgeton Buckshutem Road E.S.

Addition/Renovation project that will increase capacity by approximately 160 seats. The addition includes a new gymnasium and classrooms.

Total Costs: \$23.3 Million

Number of Students: 580

Anticipated Opening: September 2017

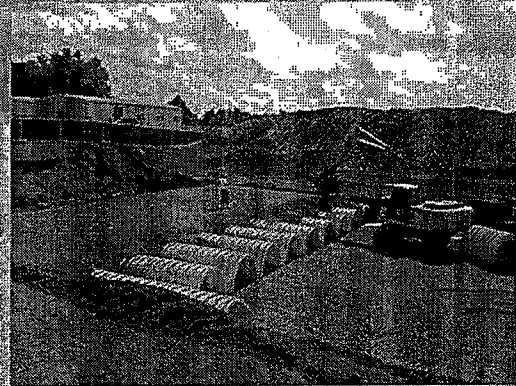
Bridgeton Quarter Mile Lane E.S.

Addition/Renovation project that will increase capacity by approximately 475 seats. The addition consist of a new gymnasium, multi purpose room, and classrooms.

Total Costs: \$39 Million

Number of Students: 730

Anticipated Opening: September 2017



Elizabeth Academic High School

A new 183,000 square foot facility that will educate approximately 1,100 students in grades 9-12.

Total Costs: \$64.1 Million

Number of Students: 1,100

Anticipated Opening: September 2016

6x5

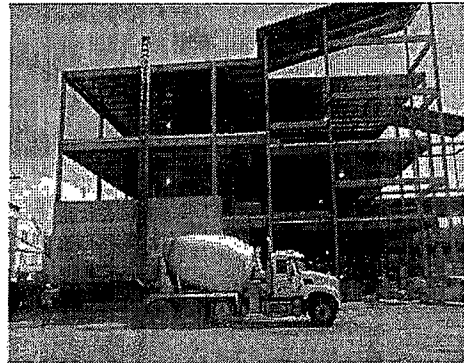
Jersey City P.S. 20

A new 108,000 square foot facility designed to educate approximately 600 students in grades kindergarten through 5.

Total Costs: \$48.2 Million

Number of Students: 600

Anticipated Opening: September 2016



Keansburg Caruso E.S.

A new 122,000 square foot facility designed to educate approximately 750 students in grades kindergarten through 5.

Total Costs: \$50.9 Million

Number of Students: 750

Anticipated Opening: September 2016

New Brunswick Redshaw School

A new 135,000 square-foot, three-story facility designed to educate approximately 900 students in grades prekindergarten through 5.

Total Costs: \$51.2 Million

Number of Students: 900

Anticipated Opening: January 2015



7x2

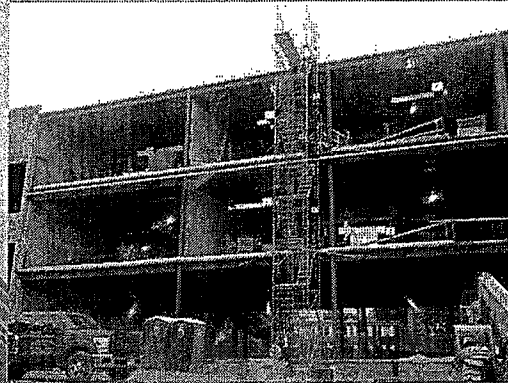
Newark Elliott Street School

A new 108,000 square foot facility designed to educate approximately 600 students in grades kindergarten through 5.

Total Costs: \$46.7 Million

Number of Students: 850

Anticipated Opening: September 2016



Newark Oliver Street School

A new 108,000 square foot facility designed to educate approximately 600 students in grades kindergarten through 5.

Total Costs: \$73.6 Million

Number of Students: 850

Anticipated Opening: September 2016



Passaic Henry Street School

A new 108,000 square foot facility designed to educate approximately 600 students in grades kindergarten through 5.

Total Costs: \$55 Million

Number of Students: 680

Anticipated Opening: September 2016



18x

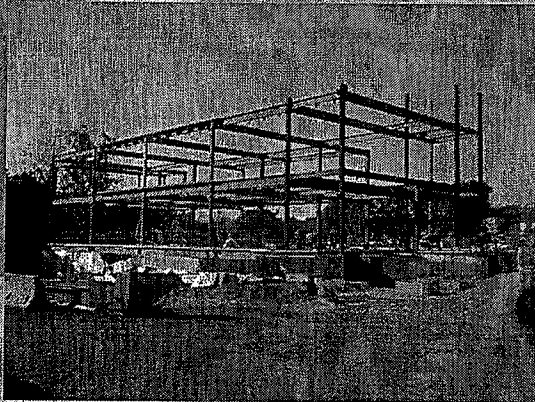
Paterson School #16

A new 109,500 square-foot facility designed to educate approximately 700 students in grades prekindergarten through 8.

Total Costs: \$62.3 Million

Number of Students: 700

Anticipated Opening: September 2016



Paterson Marshall Street E.S.

A new 109,000 square-foot facility designed to educate approximately 650 students in grades kindergarten through 8.

Total Costs: \$55.2 Million

Number of Students: 650

Anticipated Opening: September 2016

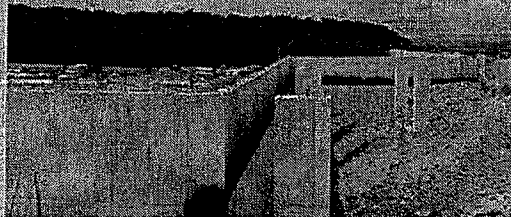
Phillipsburg High School

A new 330,000 square-foot facility designed to educate approximately 1,840 students in grades nine through twelve.

Total Costs: \$127.5 Million

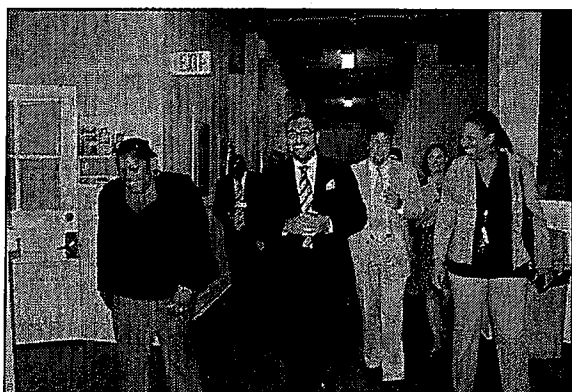
Number of Students: 1,840

Anticipated Opening: September 2016



X94

Swing Spaces Open to TCHS Students On Time



Students in Trenton started this school year in renovated temporary educational space. As part of the new Trenton Central High School (TCHS) project, swing space is being utilized to house the student population during the demolition of the existing building and construction of the new school. In order to continue with an accelerated timeline, it was necessary that this swing space be secured and renovated prior to the start of the school year so that the SDA could move forward with plans for the new school.

Therefore, over the summer, SDA and Trenton Public Schools worked diligently to ensure that these facilities were transformed into schools in which the students can thrive. Renovations and upgrades were completed at four buildings across the city at a total cost of nearly \$3.3 million. Work included the repair of windows and ceiling tiles, patching and painting of walls, installation of new flooring in classrooms and corridors, HVAC upgrades, plumbing and electrical upgrades, the addition of new wall partitions, the creation of a Dance Studio, and installation of a kiln and vent hood in the Ceramics Room.

The SDA also funded more than \$1 million in communications and technology upgrades throughout the facilities providing wireless connectivity, an intercom system, a clock system, a video surveillance system, and an alarm system. Recognizing the challenge presented by a multi-campus high school, the SDA also enabled the installation of a Public Address System that connects all buildings, allowing the Principal or others to make announcements to all students simultaneously.

The TCHS student body will occupy these new, temporary facilities for the next four years. During a tour of the renovated buildings on the first day of school, CEO Charles McKenna noted “Although I know there will be an adjustment period for all involved, I am excited to see Trenton Central High School students starting this school year in swing spaces throughout the city that are equipped to provide them with a quality education.”

Trenton Central High School Project Evolves

The Trenton Central High School project has become a focal point of the Christie Administration. The ongoing partnership with the Trenton School District, local leaders and community members has been unlike anything that has occurred in the past. Community members have come to SDA Board meetings to advocate for a new school and SDA officials regularly attended monthly Board of Education committee meetings to update the community on the status of the project.

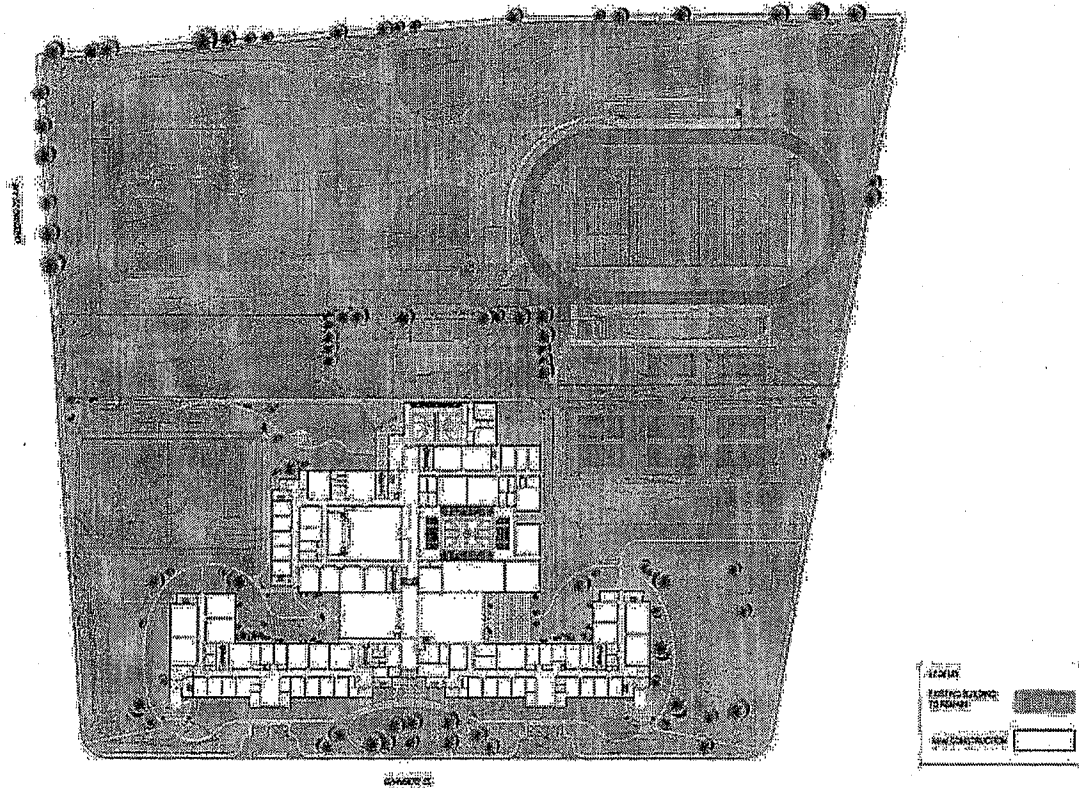
Over the summer months, after students vacated the current TCHS building, the SDA engaged an engineering consultant to provide a structural assessment for the partial demolition of the building and to investigate the feasibility of retaining certain specific areas of the building. This assessment required invasive testing with selective demolition to determine the structural viability of the building. The final report, now posted to the SDA’s website, details significant concerns with the current structure and the

10X11

retention of portions of it. Therefore, the Trenton Board of Education considered an alternative for effective advancement of the project, specifically to demolish the school completely and build a new school. Ultimately, the Board voted to proceed with a complete demolition and construction of a new school.

The SDA will move forward with plans for a new school utilizing a design-build approach. In order to prepare the school site for the construction a new building, the SDA anticipates demolition activities will begin in the spring of 2015.

Site plan for the new Trenton Central High School



Starting School in September in a New School



The school hallway was lined with children holding signs saying “We love our new school!” When the Governor arrived, the deafening screams and cheers were representative of the excitement in the air. The students were thrilled to celebrate the opening of their new school, the George L. Catrambone Elementary School.

Named for a former Assistant Superintendent and educator in Long Branch, the new school opened to

11401

approximately 800 students in September 2014. Governor Christie, SDA CEO Charles McKenna and other dignitaries joined students and staff for a ceremonial ribbon cutting later that month. The 109,000 square foot, \$40 million school is the first facility to both start construction and open to students under Governor Christie. It did so while meeting the Administration's higher, more cost effective standards.



This school was delivered on time, on budget and with a certificate of occupancy in hand.

Students at the Catrambone Elementary School even made a video highlighting some of the things they liked best about their new school. Included on their list were:

- The cafeteria – they love the green waves going around the room.
- The gym – they say it is the perfect place to get moving and grooving.
- The art room – one student said all the paintings make him feel closer to Van Gogh.
- The science labs – they say their journey to finding a cure to cancer starts in these rooms.
- The library – they think all the windows will help their brains as they read.
- The classrooms – they say they are perfect for learning and fun.

"Our journey to finding a cure for cancer starts right here in this room."

– A Catrambone E.S. student explaining why students love the science labs in their new school.

The completion of the Catrambone Elementary School represents all the best of what SDA does for communities. From the groundbreaking to the ribbon cutting, this project is representative of the complete reformation of the Schools Development Authority. The sweeping reforms that were instituted at the SDA to ensure that the wasteful spending, cost overruns and empty promises that existed under previous administrations would not be repeated are proving successful.

Additional Projects in the Pipeline

The 12 projects currently in construction constitute one prominent segment of the work being done to advance the SDA's Capital projects. In all, forty-one major capital construction projects have been designated within the SDA Capital Portfolio since the start of the Christie Administration. More than half of these projects have advanced into construction or design activities. At the end of the reporting period, the current status was:

- 2 projects complete;
- 12 projects in active building construction;
- 2 projects initiated Design-Build activities;
- 2 projects have ongoing site work activities;
- 1 project is in Design-Build procurement;
- 10 projects are in design development; and
- 12 projects are in scope development.

More project milestones will be celebrated in the coming months. A ribbon cutting ceremony will celebrate the opening of the Redshaw Elementary School in New Brunswick. A groundbreaking ceremony will be held for the start of the new Elementary School #3 in Jersey City and a demolition event will be held for the James Madison Elementary School in Garfield. Students in Phillipsburg will have the opportunity to participate in a beam signing for the new high school. Across the state, work is progressing, bringing much-needed new facilities to students in New Jersey's SDA Districts.

Noteworthy advancement on projects during the reporting period include:

Construction Notices to Proceed (NTP) Issued

- The addition and renovation project to the existing **Buckshutem Road School in Bridgeton** (Cumberland County) will increase the capacity of the existing school from 404 students to approximately 580 students in grades kindergarten through eight. The anticipated completion of the addition is May 2016. The anticipated completion of the renovation work is September 2017.
- The addition and renovation project to the existing **Quarter Mile Lane School in Bridgeton** (Cumberland County) will increase the capacity of the existing school from 254 students in grades kindergarten through eight to approximately 730 students in grades pre-kindergarten through eight. The anticipated completion of the addition is May 2016. The anticipated completion of the renovation work is September 2017.
- The new **Joseph A. Caruso Elementary School in Keansburg** (Monmouth County) will provide a 122,000 square foot school designed to educate 750 students in grades kindergarten through four. The anticipated school opening is September 2016.
- The new **PS 16 in Paterson** (Passaic County) will provide a 109,500 square foot, three-story school designed to educate 700 students in grades pre-kindergarten through eight. The anticipated school opening is September 2016.

Commenced Early Site Preparation Activities

- Demolition of the existing building for the new **James Madison Elementary School in Garfield** (Bergen County) is anticipated for completion before the end of 2014.

Design-Build Projects that Initiated the Design

- The new **Elementary School/Middle School in Gloucester City** (Camden County) will provide a 122,000 square-foot school designed to educate approximately 685 students in grades four through eight. The anticipated school opening is September 2017.

- The new **Elementary School 3 in Jersey City** (Hudson County) will provide a 123,000 square-foot school designed to educate approximately 770 students in grades pre-kindergarten through five. The anticipated school opening is September 2016.

Projects that Initiated Bridging Design Services

- An award for Design Services was issued for the **Lakeside Middle School conversion to High School project in Millville** (Cumberland County).
- An award for Design Services was issued for the **High School conversion to Middle School project in Millville** (Cumberland County).

For a full listing of all Capital Portfolio projects and their current status, please see Appendix C.

Planning Effort Continues to Prove Beneficial to School Districts

The SDA's working group meetings are a vital component of the process that has been implemented to ensure that the most appropriate project advances to address existing needs. The most recent example of this effort is in Passaic City. The Dayton Avenue Complex project was identified for advancement in 2012. However, as a result of ongoing working group meetings with the Passaic City school district and the New Jersey Department of Education (DOE), it became clear that the project logistics requiring the removal of temporary classroom units (TCUs) from the project site prior to construction required the consideration of alternative solutions.

These discussions resulted in a plan to construct a new elementary school at the SDA-owned Leonard Place site. This will allow for the temporary relocation of students currently educated in the Dayton Avenue TCUs to other District facilities until completion of the Dayton Avenue Educational Campus, and simultaneously provide additional and much-needed capacity. While the selection of this option would push back the start of Dayton Avenue project construction, the delivery of the two projects will provide the District with additional capacity for 3,368 students. This approach more fully addresses District needs and leverages prior state investment of approximately \$13.1 million for the acquisition, demolition and site remediation of the Leonard Place site.

These types of creative discussions are ongoing across the State in Districts including Camden, Perth Amboy and Orange. Important to effective advancement of a project into construction, active discussions and planning are ongoing for all Capital Portfolio projects that are in scope development. The SDA is committed to taking the time needed up front to identify the most appropriate project to ensure the efficient use of state resources and maximize delivery of projects needed to positively impact students for generations to come.

124x

Addressing Capital Improvement Needs Through Emergent Projects



As New Jersey's educational infrastructure grows older, buildings around the state will require attention to address conditions that come with aging schools. To tackle this issue, it is essential that there exists a collaborative partnership between the SDA and local districts to maintain and upgrade these facilities. The local school districts are responsible for building maintenance and any emergency issues that may arise. The SDA's role is focused on DOE-designated emergent projects at SDA District schools.

The Emergent Project Program provides assistance to SDA District school facilities in need of rehabilitation. Emergent projects address water infiltration issues and include the rehabilitation or replacement of roofs, windows, exterior masonry, heating and cooling systems, plumbing, electrical, mechanical and security systems.

In August, SDA CEO Charles McKenna visited West New York school district to see first-hand the progress of emergent projects at two schools to remedy water infiltration issues. The projects totaled more than \$3 million in costs combined. West New York Superintendent John Fauta said "The West New York School District is extremely grateful to both Governor Christie and the SDA for all they have done for this district. The support we have received from the State has meant so much to this community because without assistance from the State, we would not have been able to afford these opportunities."

At the end of the reporting period, the SDA was managing 15 emergent projects totaling more than \$16.7 million at 14 schools. For a status report of the SDA's Emergent Projects, please visit Appendix D.

SDA-Managed Emergent Projects				
District	School Name	Advancement Category	Project Phase	CCF or *Contract Award
Bridgeton	Broad Street Elementary School	Building Envelope	Design	\$1,034,228
Camden	Bonsall Elementary School	Structural	Design	\$229,104
Camden	Cramer Elementary School	Structural	Design/Procurement	\$300,000
Irvington	Irvington High School	Roof, HVAC and Masonry Repairs	Design	\$1,739,606
Irvington	Union Avenue Middle School	Building Envelope	Construction	*\$2,397,018
Irvington	University Middle School	Building Envelope	Construction	\$2,816,095
Irvington	University Middle School	Building Envelope	Construction	\$2,816,095
Newark	Alma-Flagg Elementary School	HVAC	Construction	*\$470,250
Newark	Chancellor Avenue School	Structural	Design	\$611,048
Orange	Orange Middle School	Roof Repairs	Construction	\$852,613
Passaic City	Number 11, Memorial Elementary School	Building Envelope	Construction	*\$1,334,945
Passaic City	Number 12 HS	Building Envelope	Construction	*\$458,812
Salem City	Salem Middle School	Building Envelope	Construction	*\$1,230,364
Trenton	Hedgepath Williams Elementary School	Domestic Water	Design	>\$500,000
Vineland	High School South	HVAC	Design	\$8,700,000

154

SDA's ROD Grant Funding Helps to Make Two Public Schools Accessible for All Students

Following local media reports of a student who would be unable to attend a local elementary school this fall due to the lack of a district school that was equipped with ADA compliant restrooms, the State stepped in to provide financial resources to help the district make the necessary improvements. Once made aware of the situation, SDA acted quickly through its Regular Operating District (ROD) Grant Program to provide the district with the resources to make the proper renovations so that all district students could start the school year in a community school within their own district.

The SDA provided two grants totaling \$339,774, to the Hamilton School District to renovate one existing toilet room in a Kindergarten classroom and a storage area to create an accessible toilet room. The grants also allowed for site work to supply new barrier-free playgrounds including sidewalks. These changes occurred at University Heights Elementary School and George E. Wilson Elementary School. The renovations to the schools' kindergarten bathrooms were completed prior to the start of school in September 2014.

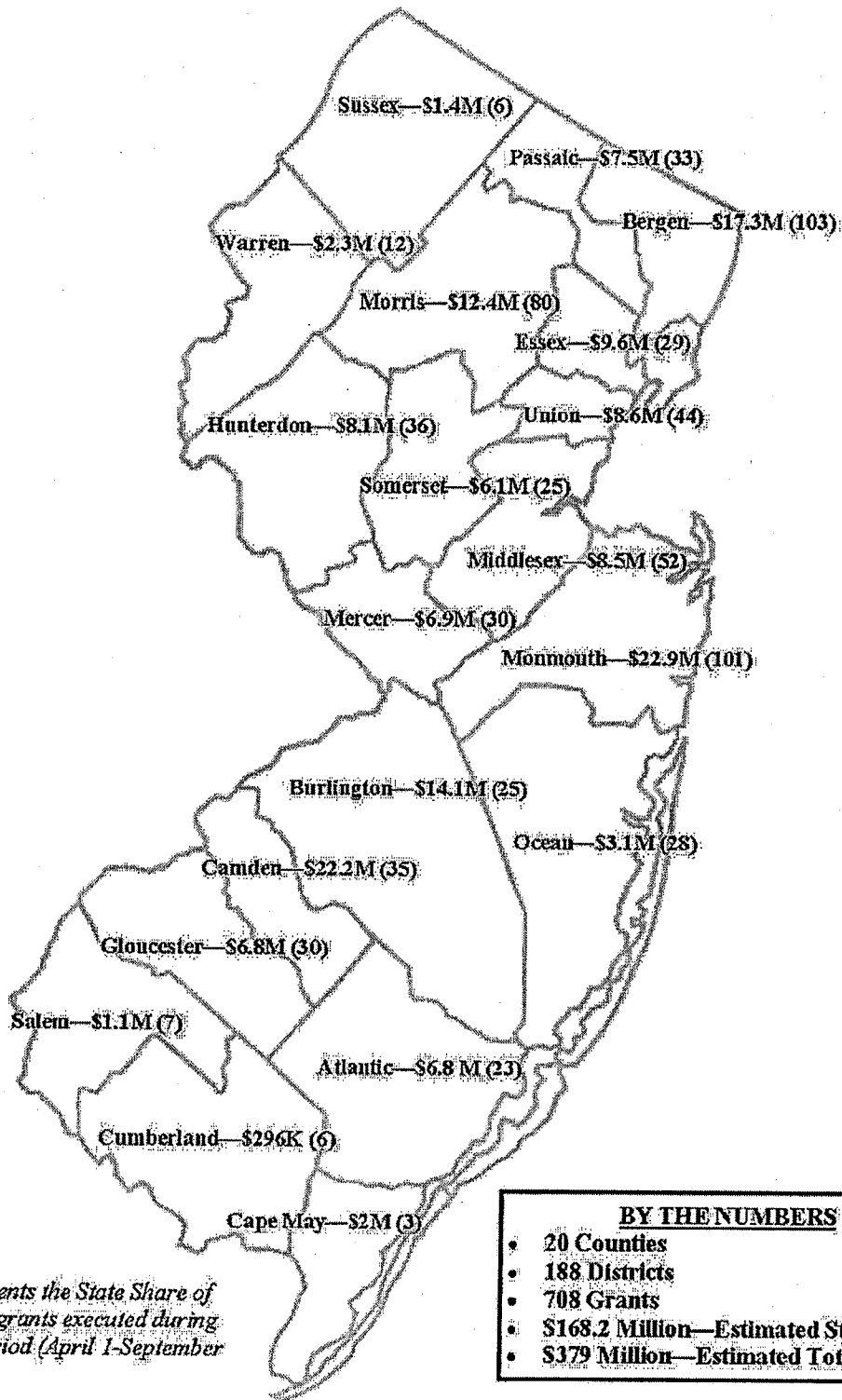
Impact of ROD Grants Felt Statewide

The impact of the largest single grant offering in the ROD Grant Program's history was fully evident this summer, assisting school districts throughout the state with vital school improvement and upgrade projects. SDA provides grants of at least 40 percent of eligible project costs to local school districts to leverage the local resources that are used to complete these projects. In fact, from April 1, 2014 through September 30, 2014, the SDA executed 710 grants from Allocation Four (announced in December 2013) to 188 school districts for projects throughout the state. This \$168.6 million state investment leverages the local contribution of \$379.9 million.

SDA Grants staff worked tirelessly to execute many of these grants on an expedited basis so that school districts could complete the work during the important summer months, when students were not occupying the buildings. From the start of the Christie Administration in January 2010 through the end of the reporting period on September 30, 2014, the SDA has executed a total of 1,830 grants in 351 school districts across the state

16X

Regular Operating District Grant Funds in Your Community



17x

Productive Partnerships Produce Great Results

Largest Class Since In-House Training Program Creation, 21 Firms Graduate

The SMWBE Contractor Training Program is one of the SDA's efforts to provide small, minority and women-owned enterprises with the information and tools required to participate in the state's school construction program. Each offering of the SDA's Small Minority and Women-owned Business Enterprise (SMWBE) Contractor Training Program improves upon the one that preceded it. With 21 firms successfully completing this year's program, including 15 firms who were already SDA Prequalified, this year's session was possibly the best yet.

The nine-week training program culminated with a graduation/networking event on April 30. The event afforded graduates with an opportunity to speak with several of the State's large general contracting firms and representatives from other State contracting agencies that can further benefit their growth.

"I didn't know what to expect when I signed up for the SMWBE Training Program. I am very glad that the SDA afforded such an opportunity to small construction businesses."

**-Check Electrical Corp., 2014
SMWBE Training Program Graduate**

Firms across the state of New Jersey were trained by SDA personnel and industry professionals who provided detailed presentations covering the various requirements needed to work with the SDA. The course evaluations compiled throughout the duration of the program were overwhelmingly positive. Participants found the program useful and indicated that they would recommend participation to other firms. They expressed appreciation for the SDA's program and its positive impact on their ability to grow and improve their businesses.

Meka Holdings, a small property and construction management firm in Shrewsbury, found the training to be beneficial overall. "The training program was excellent and helpful not only in potentially doing business with the NJSDA, but also helpful in re-examining our own businesses to pinpoint areas that may need attention, or expanding", said Maria Schultz, a principal consultant at Meka Holdings.



18X

The SDA hopes that the Contractor Training Program will encourage more small businesses throughout the state to compete for work on school construction projects. One graduate, New Road Construction, is currently working on an SDA Project in Bridgeton as a subconsultant for the construction manager. While this is a project that the company obtained prior to completing the training program, its principals indicated that they found the training to be very beneficial, while working on the project. New Road Construction hopes to receive work on future SDA projects as well.

The SDA is gearing up for the next offering of the training program in early 2015. Additional program improvements will be made based on the feedback that was obtained from prior graduates as SDA strives to provide the most useful and relevant information to participants.

Encouraging Open Communication and an Exchange of Ideas

The SDA considers itself to be a resource and guide for consistency in sound school design and construction practices for districts across New Jersey. However, SDA remains open to feedback from our stakeholders, understanding that processes can always improve. Toward that effort, SDA participates in meetings, seminars, and panels throughout that state in hopes of engaging our constituents, stakeholders and the general public through proactive outreach. During the reporting period, SDA staff participated in a variety of forums and meetings with representatives from organizations including, among others, the New Jersey Association of School Administrators, Urban Superintendents, Construction Management Association of America Metro NY/NJ Chapter, Healthy Schools Now Coalition and the Associated Construction Contractors of New Jersey.

19X

Protecting, Preserving and Efficient Utilization of State Resources

Financial Overview

In total, the New Jersey State Legislature has authorized \$12.5 billion in funding for the SDA (\$8.9 billion for SDA Districts, \$3.45 billion for RODs and \$150 million for vocational schools). Since the program's inception, the amount of bonds issued to date to fund the program is \$9.084 billion. As reflected in Appendix G, there was a \$60 million bond issuance during the reporting period. The EDA also approved a \$525 million bond sale that closed in October 2014, the largest bond sale to date under the Christie Administration.

Bonding activity supports the entirety of the SDA's portfolio and it is not tied to specific individual projects. Generally, bonding activity coincides with cash flow requirements for already-committed projects in the SDA's portfolio. Therefore, bond proceeds provide the necessary cash flow needed to make payments as projects continue to advance.

SDA currently has approximately \$640 million in cash on hand, having disbursed \$160 million during the reporting period. The 2013 financial statements, audited by Ernst & Young LLP, were approved by the SDA Board in April 2014 and can be found on the SDA's website at http://www.njsda.gov/RP/reports/SDA_Financial_Statement_12.pdf.

Fiscal Efficiency

The SDA utilizes multiple avenues to recover funds and avoid costs, which may include successful rebate and refund applications, and/or errors and omissions cost recoveries.

- In May, 2014, the Authority received \$5,386 in the form of a Smart Start Rebate from the New Jersey Clean Energy Program for a school facility project in the Newark School District. The Program provides financial incentives for energy efficient measures including high-efficiency lighting and lighting controls, heating and cooling equipment, water heating, motors and variable frequency drives.
- In September 2014, the Authority received a litigation settlement of \$106,644 in an environmental cost recovery matter relating to the East Orange Demonstration Project.
- Between April 1, 2014 and September 30, 2014, the SDA resolved \$16,172,691 in contractor claims for a total settlement amount of \$5,199,133. These settlements equal roughly 32% of the original amounts claimed and represent a cost avoidance to the SDA of \$ 10,973,557.

20X

Recommendations for Change

SDA is statutorily required to undertake capital improvement projects in SDA Districts. This is in addition to the new schools and major renovations/rehabilitations that are funded and completed by the SDA. Some of this capital improvement work includes projects that address water infiltration issues as well as the repair or replacement of roofs, windows, exterior masonry, heating and cooling systems, plumbing, electrical, mechanical and security systems. It is important to note, however, that the SDA's mandate does not include emergency or routine maintenance work, which are the responsibility of the school district to fund and address. The importance of maintaining school buildings cannot be overlooked, as proper maintenance helps to stave off deterioration that often leads to the need for more significant capital improvement work.

With the educational infrastructure in New Jersey's SDA Districts aging, it is reasonable to assume that there will continue to be capital improvement needs that arise in school buildings throughout the state. The identification and approval process for addressing these projects has undergone various improvements since the designation of emergent projects began in 2008. SDA staff is considering recommendations for an effort to gather a full, statewide knowledge of all SDA District facilities needs to proactively assess the most effective advancement of capital improvement work to address those needs.

It is also important to note, that additional funding will be necessary to undertake the capital improvement work that will be required throughout the state in the coming years. The SDA is in the beginning stages of planning and developing recommendations as to how to continue to address the overwhelming needs statewide once SDA's authorized funding is exhausted. Based on the information contained in the Long Range Facilities Plans (LRFPs) filed with DOE by the SDA Districts and RODs, a financial commitment significantly exceeding that which the New Jersey Legislature has previously authorized (\$12.5 billion) would be required to appropriately address all of the school construction project needs across the state moving forward.

21 X

APPENDIX

Appendix A - Small Business Enterprise (SBE) Contracts Awarded

Appendix B - Number of Minority/Female Work-Hours by Trade

Appendix C - Status of Capital Portfolio Projects

Appendix D - Status of Emergent Project Program

Appendix E - School Facilities Projects Approved by DOE

Appendix F - Cost of Construction Per Square Foot Comparison to MSA

Appendix G - School Facilities Construction Bonds and Notes

Appendix H - Projects Advertised and Awarded Under the Christie Administration

22X

Appendix A - Small Business Enterprise (SBE) Contracts Awarded

In December 2010, the Governor signed legislation that directs the SDA to biannually compile information on the number of school construction contracts entered into between the Authority and minority and women contractors during the reporting period. This information must include the total value of the contracts and the percentage that those contracts represent of all school facilities project construction contracts entered into by the Authority.

SDA Contract Awards to Small Business Enterprises (April 1, 2014 – September 30, 2014)	
Total SDA Construction Contracts	\$ 9,461,733
Total SBE Contracts (inclusive of MBE, SMWBE contracts)	\$ 5,107,219
Percentage of SDA Contracts Awarded to SBEs	53.98 %

The total SDA Construction Contracts figure listed in the charts below does not include a Design-Build contract for \$40,467,000 that was awarded during the reporting period for the Gloucester City Elementary/Middle School. Since this project was still in the design phase of the contract during the reporting period, and SBE contracts are not captured until the construction phase begins, this project will be included in future construction contract totals.

The SDA's SBE program goal is to ensure that 25% of the total dollar value of all publicly advertised contracts awarded by the SDA within a fiscal year goes to Small Business Enterprises (SBE). The SDA requires consultants and prime contractors to make good-faith efforts to identify available SBE sub-consultants and SBE subcontractors and award at least 25% of the total contract value to them. The SDA consistently exceeds this goal, as evidenced by the nearly 55% of awards that went to SBEs during this reporting period.

During the reporting period, \$61,250 (0.65%) of SDA construction contracts were awarded to SBE/minority-owned businesses and more than \$1,572,049 (16.61%) of construction contracts were awarded to SBE/women-owned businesses. Of the more than 1,856 firms currently prequalified to do business with the SDA, only 89 or 0.48% of those firms are Minority Owned Businesses and 101 or 0.54% of those firms are Women Owned Businesses. SDA has undertaken proactive efforts to increase the percentage of Minority and Women-owned Business Enterprises that are prequalified to work on SDA projects through the SDA's SMWBE Contractor Training Program. As detailed earlier in this report, SDA's SBE program provides participants with knowledge on how to do business with the SDA and helps firms take the steps necessary to become prequalified.

Appendix B - Number of Minority/Female Work-Hours by Trade

Construction Contracts: Number of Minority/Female Work-Hours by Trade (April 1, 2014 – September 30, 2014)					
Trade	Total Work-Hours	Minority Work- Hours	Minority Work- Hours Percentage	Female Work- Hours	Female Work- Hours Percentage
Asbestos	2,256	1,480	65.60%	80	3.55%
Bricklayer or Mason	39,255	9,385	23.93%	0	0.00%
Carpenter	43,225	9,059	20.94%	0	0.00%
Caulker	456	112	24.56%	0	0.00%
Dock Builder	1,893	1,060	56.00%	0	0.00%
Dry Wall Finishers	8	8	100.00%	0	0.00%
Electrician	28,841	5,725	19.85%	197	0.68%
Elevator Mechanical	654	121	18.50%	0	0.00%
Excavation	2,727	744	27.27%	60	2.20%
Fire Proofer	416	188	45.19%	0	0.00%
Glazier	3,686	1,292	35.05%	0	0.00%
HVAC Mechanic	2,172	328	15.10%	264	12.15%
Insulator	1,067	843	79.01%	0	0.00%
Ironworker	19,729	2,837	14.38%	922	1.58%
Laborer	58,467	24,692	42.23%	0	0.00%
Operating Engineer	19,108	2,420	12.66%	390	2.04%
Painter	4,441	1,976	44.49%	0	0.00%
Pipe Fitters	1,007	0	0.00%	0	0.00%
Plumber	16,529	3,059	18.51%	24	0.15%
Roofer	4,761	1,218	25.58%	29	0.61%
Sheet Metal Worker	5,529	2,032	36.75%	0	0.00%
Sprinkler Fitter	2,691	512	19.03%	40	1.49%
Steam Fitter	607	416	68.53%	36	5.93%
Surveyor	416	136	32.69%	0	0.00%
Tiler	1,858	218	11.73%	0	0.00%
Truck Driver	4	0	0.00%	0	0.00%
TOTALS	261,803	69,861	26.68%	2,042	0.78%

24X

Appendix C - Status of Capital Portfolio Projects

Status of SDA Capital Portfolio (As of 9/30/14)		
School District	School Name	Status
Bridgeton	Buckshutem Elementary School	Construction
Bridgeton	Quarter Mile Lane Elementary School	Construction
Camden	Camden High School	Scope development with DOE and District
East Orange	George Washington Carver Elementary School	Scope development with DOE and District
Elizabeth	Academic High School	Construction
Elizabeth	New ES @ Halloran PS #22 ES Site	Design-Build procurement in progress
Garfield	James Madison ES	Demolition of existing building in progress
Gloucester City	Gloucester City Middle School	Design-Build contract awarded, design underway
Harrison	Middle School Grade Level	Scope development with DOE and District
Hoboken	Thomas G. Connors Elementary School	Scope development with DOE and District
Irvington	Madison Avenue Elementary School	Scope development with DOE and District
Jersey City	Elementary School 3	Design-Build contract awarded, design underway
Jersey City	PS 20 Elementary School	Construction
Keansburg	Caruso Elementary School	Construction
Keansburg	Port Monmouth Road School	In Design Development (SDA Design Studio)
Long Branch	George A. Catrambone Elementary School	Completed. School opened to students in September 2014
Millville	Conversion of Lakeside MS to HS	Bridging Architect procured, design underway
Millville	Conversion of Sr. HS to MS	Bridging Architect procured, design underway
New Brunswick	A. Chester Redshaw Elementary School	Construction
New Brunswick	Paul Robeson Elementary School	In Design Development (SDA Design Studio)
Newark	Elliott Street Elementary School	Construction
Newark	Oliver Street Elementary School	Construction
Newark	South Street Elementary School	In Design Development (SDA Design Studio), Phase I sitework ongoing
Orange	Cleveland Avenue Elementary School	Scope development with DOE and District
Orange	Orange High School	Scope development with DOE and District
Passaic City	Dayton Avenue Elementary School Campus	In Design Development (SDA Design Studio)
Passaic City	New Henry Street Elementary School	Construction
Passaic City	New Elementary School at Leonard Place	In Design Development (SDA Design Studio)
Paterson	Elementary School Grade Level	Scope development with DOE and District
Paterson	Marshall Street Elementary School	Construction
Paterson	PS Number 16 Elementary School	Construction
Pemberton	Denbo Elementary School	Scope development with DOE and District
Perth Amboy	All Grade Levels	Scope development with DOE and District
Perth Amboy	Seaman Avenue Elementary School	In Design Development (SDA Design Studio)
Phillipsburg	Phillipsburg High School	Construction
Plainfield	Woodland and/or Cook Elementary School	Scope development with DOE and District
Trenton	Trenton Central High School	In Design Development (SDA Design Studio)
Union City	Elementary School Grade Level	Scope development with DOE and District
Vineland	New Middle School	In Design Development (SDA Design Studio)
West New York	Harry L. Bain Elementary School	Design in progress
West New York	Memorial High School	Alternative Delivery Method complete. St. Joseph's H.S. purchased and transferred to district. Science lab renovations delegated to district.
Total		41 projects

25X

Appendix D - Status of Emergent Project Program



SDA Emergent Program Status as of September 30, 2014

Completed

District	School Name	Advancement Category
Camden	Pyne Poynt Middle School	Structural
Camden	Sharpe Elementary School	Building Envelope
East Orange	Ecole de Louverture	Water Infiltration Repairs
Harrison	Washington Middle School	Structural
Irvington	Chancellor Avenue Elementary School	Building Envelope
Irvington	Madison Avenue Elementary School	Building Envelope
Newark	Alma-Flagg Elementary School	HVAC
Newark	Hawkins Elementary School	Boiler
Newark	Ridge Elementary School	Boiler
Newark	Sussex Elementary School	Boiler
Newark	West Side High School	Electrical
Newark	Wilson Avenue Elementary School	Building Envelope
Newark	Wilson Avenue Elementary School	Building Envelope
Paterson	PS 6	Window Replacement
Salem City	Salem High School	Building Envelope
Trenton	Central High School West	HVAC
West New York	PS #1	Structural
West New York	PS #5	Structural

In Construction

District	School Name	Advancement Category
Camden	East Camden Middle School	HVAC
Irvington	Union Avenue Middle School	Building Envelope
Irvington	University Middle School	Building Envelope
Irvington	University Middle School	Building Envelope
Orange	Orange Middle School-2008 emergent	Roof Repairs
Passaic City	Number 11, Memorial Elementary School	Building Envelope
Passaic City	Number 12 HS	Building Envelope
Salem City	Salem Middle School	Building Envelope

In Design

District	School Name	Advancement Category
Bridgeton	Broad Street Elementary School	Building Envelope
Camden	Bonsall Elementary School	Structural
Irvington	Irvington High School	Roof, HVAC and Masonry Repairs
Newark	Chancellor Avenue School	Structural
Trenton	Hedgepath Williams Elementary School	Domestic Water
Vineland	High School South	HVAC

Design Procurement

District	School Name	Advancement Category
Camden	Cramer Elementary School	Structural

Delegated to District

District	School Name	Advancement Category
----------	-------------	----------------------

264

Asbury Park	Asbury Park High School	Building Envelope
Asbury Park	Asbury Park Middle School	Building Envelope
Burlington City	Captain James Lawrence Elementary School	Building Envelope
Camden	Yorkship Elementary School	Boiler
Garfield	Washington Irving Elementary School #4	Boiler
Garfield	Woodrow Wilson #5	Boiler
Gloucester City	Mary Ethel Costello	Fire Safety
Gloucester City	Mary Ethel Costello	Structural
Hoboken	Joseph F. Brandt No. 2 Elementary School	Building Envelope
Jersey City	PS #23 - Duncan Avenue Annex	Boiler
Jersey City	A. Harry Moore	Building Envelope
Jersey City	Alexander D. Sullivan No. 35 Elementary School	Building Envelope
Jersey City	James J. Ferris High School	Building Envelope
Jersey City	Nicolas Copernicus No. 25 Elementary School	Building Envelope
Jersey City	Nicolas Copernicus No. 25 Elementary School	Building Envelope
Millville	Holly Hieghts Elementary School	Building Envelope
Newark	Abington Avenue Elementary School	Building Envelope
Newark	Abington Avenue Elementary School	Building Envelope
Newark	Ann Street Elementary School	Building Envelope
Newark	Arts High School	Building Envelope
Newark	Avon Avenue Elementary School	Building Envelope
Newark	Chancellor Avenue Annex Elementary School	Building Envelope
Newark	Dayton Avenue Elementary School	Building Envelope
Newark	Fourteenth Avenue Elementary School	Building Envelope
Newark	Hawthorne Avenue Elementary School	Structural
Newark	Madison Elementary School	Building Envelope
Newark	Malcolm X Shabazz High School	Building Envelope
Newark	Malcolm X Shabazz High School	Building Envelope
Newark	Maple Avenue Elementary School	Building Envelope
Newark	McKinley Elementary School	Building Envelope
Newark	Newark Vocational High School	Building Envelope
Newark	Newark Vocational High School	Building Envelope
Newark	Peshine Avenue Elementary School	Building Envelope
Newark	Weequahic High School	Building Envelope
Newark	West Side High School	Structural
Plainfield	Frederic W. Cook Elementary School	Building Envelope
Plainfield	Plainfield High School	Building Envelope

27X

Appendix E - School Facilities Projects Approved by DOE

From April 1, 2014 through September 30, 2014, the New Jersey Department of Education approved 9 school facilities projects which were undertaken and funded by the SDA. None of these projects exceeded the Facilities Efficiencies Standards (FES).

School Facilities Projects Approved by DOE				
April 1, 2014 – September 30, 2014				
	Total School Facilities Projects Approved	Required Educational Adequacy/FES Review	Projects Requiring Educational Adequacy/RES Review & Exceeding the FES	% of Projects Requiring Educational Adequacy/FES Review and Exceeding the FES
All Districts	158	46	0	0
SDA Districts	9	1	0	0
RODs	149	45	0	0

Note: The 8 projects approved that did not require Educational Adequacy/FES Review were emergent projects.

The information included in the table above was provided by the New Jersey Department of Education, Office of School Facilities.

Appendix F - Cost of Construction Per Square Foot Comparison to MSA

Metropolitan Statistical Area (MSA) Totals				
Cost Per Square Foot Comparison at Bid				
Statistical Brief				
Source	Area	Elementary School	Middle School	High School
McGraw-Hill Metropolitan Statistical Area (MSA) (April 2014 - September 2014)	Philadelphia	\$244	-	-
	New York	\$290	-	-
School Planning & Management by Region 2 State Average¹ (January - December 2013)	NY, NJ, PA Average	\$216	\$278	\$318
New York City School Construction Authority (July 2013 - June 2014)	New York City	\$502 [^]	\$549 [^]	-
SDA Managed Projects (2nd and 3rd Quarter Actual)	Statewide	-	\$309*	-
<p><i>The table represents a statistical cross-section of data from numerous sources with report dates ranging from January 2013 to September 2014. Costs are at time of bid.</i></p> <p><i>1 - Current reporting is for Region 2 (for NJ, NY and PA only) as reported by School Planning & Management.</i></p> <p><i>[^]Numbers reflect the New York City Mayor's Management Report September 2014 costs at completion excluding budgeted Change Order Contingency of 10% percent.</i></p> <p><i>*Cost at Bid for one SDA District Middle School - Gloucester City New Middle School Gloucester City, New Jersey. Construction costs include \$51 per square foot for site construction. (For projects advanced via Design-Build Engagements design fees included in the bid amount have been deducted to calculate the Construction Costs Per Square Foot).</i></p>				

The table above provides a comparison of SDA's cost per square-foot for new school construction (public schools) with the Philadelphia and New York City Metropolitan Statistical Areas (MSAs). This addresses the August 2007 statutory requirement that the cost of school facilities projects undertaken and funded by the SDA be compared to similar school facilities projects constructed in the New York City and Philadelphia MSAs.

The U.S. Office of Management and Budget is responsible for developing standards for defining the MSAs and for applying these standards with Census data.

29X

The table above also includes information from the School Planning and Management School Construction Report, a recognized national-construction data source, as well as information from the New York City Department of Education School Construction Authority. The use of multiple sources to monitor and analyze construction costs provides assurance that industry-wide pricing trends are addressed.

Appendix G - School Facilities Construction Bonds and Notes

New Jersey Schools Development Authority EDA School Facilities Construction Bonds and Notes Fiscal Years 2001-2014					
Fiscal Year	Issue Date	Series	Restricted	Denominations	Principal Amount Issued
2001	04/02/01	A		\$5,000	\$ 500,000,000
Subtotal					\$ 500,000,000
2002	12/28/01	B	QZAB	\$5,000	\$ 8,600,000
Subtotal					\$ 8,600,000
2003	10/16/02	C		\$5,000	\$ 600,000,000
2003	12/30/02	D	QZAB	\$5,000	\$ 29,400,000
2003	03/14/03	E	QZAB	\$5,000	\$ 7,929,000
Subtotal					\$ 637,329,000
2004	08/07/03	F		\$5,000	\$ 600,000,000
2004	01/23/04	G		\$5,000	\$ 650,000,000
2004	05/18/04	H		\$5,000	\$ 300,000,000
Subtotal					\$ 1,550,000,000
2005	08/31/04	I		\$5,000	\$ 250,000,000
2005	08/31/04	J		\$5,000	\$ 500,000,000
2005	04/06/05	L		\$5,000	\$ 150,000,000
2005	04/06/05	M		\$5,000	\$ 500,000,000
Subtotal					\$ 1,400,000,000
2006	10/04/05	O		\$5,000	\$ 750,000,000
2006	12/15/05	P		\$5,000	\$ 175,000,000
2006	12/15/05	Q		\$5,000	\$ 500,000,000
Subtotal					\$ 1,425,000,000
2007	11/02/06	R		\$5,000	\$ 500,000,000
2007	11/02/06	S		\$5,000	\$ 100,000,000
Subtotal					\$ 600,000,000
2008	10/04/07	T		\$5,000	\$ 500,000,000
2008	10/04/07	U		\$5,000	\$ 300,000,000
2008	06/03/08	X		\$5,000	\$ 250,000,000
2008	06/03/08	Y		\$5,000	\$ 200,000,000
Subtotal					\$ 1,250,000,000
2009	01/29/09	Z		\$5,000	\$ 175,000,000
2009	06/18/09	A Notes		\$5,000	\$ 400,000,000
Subtotal					\$ 575,000,000
2010	08/20/09	BB		\$5,000	\$ 200,000,000
2010	05/17/10	CC-1	BAB	\$5,000	\$ 104,115,000
2010	05/17/10	CC-2		\$5,000	\$ 48,910,000
2010	05/17/10	B Notes	BAB	\$2,000	\$ 350,000,000
Subtotal					\$ 703,025,000
2013	10/03/12	G Notes		\$5,000	\$ 119,060,000
2013	10/03/12	H Notes		\$5,000	\$ 119,060,000
2013	10/03/12	KK		\$5,000	\$ 136,880,000
Subtotal					\$ 375,000,000
2014	05/06/14	RR		\$5,000	\$ 60,000,000
Subtotal					\$ 60,000,000
Grand Total					\$ 9,083,954,000

31x

Appendix H - Projects Advertised and Awarded Under the Christie Administration

SDA Delivers on Promises - Work Advanced Under the Christie Administration

(January 1, 2010 - September 30, 2014)

District	Project	Project Category	Activity	Construction Cost Estimate (CCE)	Contract Award Amount	Date
Camden	Lanning Square Elementary School	Other Capital Work	Advertisement	\$4,486,270		1/6/10
Passaic	Leonard Place ECC/BOE Offices	Other Capital Work	Advertisement	\$4,315,016		1/6/10
Irvington	Union Avenue Middle School - Design Services	Emergent Project	Award		\$120,264	1/6/10
Trenton	Trenton Central High School - Design Services	Emergent Project	Award		\$50,305	1/7/10
Garfield	James Madison School #10	Emergent Project	Advertisement	\$953,763		1/7/10
Garfield	Garfield Middle School	Emergent Project	Award		\$16,840	1/27/10
Elizabeth	New Park 8 School #29 - Consultant	Capital Project	Award		\$2,000	3/5/10
Paterson	School #15	Emergent Project	Award		\$85,416	4/5/10
Paterson	School #3	Emergent Project	Award		\$142,000	4/9/10
East Orange	Hart Middle School	Emergent Project	Advertisement	\$939,900		4/22/10
Paterson	Sage Adult High School	Emergent Project	Advertisement	\$465,870		4/30/10
Paterson	ECC at 14th Street	Emergent Project	Advertisement	\$217,842		4/30/10
Camden	Lanning Square Elementary School	Other Capital Work	Award		\$2,982,675	5/7/10
Neptune	Midtown Community	Emergent Project	Award		\$17,574	5/18/10
Paterson	School #10	Emergent Project	Advertisement	\$135,000		5/18/10
Passaic	Leonard Place ECC/BOE Offices	Other Capital Work	Award		\$2,593,000	5/24/10
East Orange	Hart Middle School	Emergent Project	Award		\$213,000	6/16/10
Passaic	Thomas Jefferson Elementary School	Emergent Project	Advertisement	\$289,750		6/18/10
Passaic	William B. Cruise School #11	Emergent Project	Advertisement	\$1,487,206		6/18/10
East Orange	School #6	Emergent Project	Advertisement	\$900,218		6/18/10
Newark	Garfield Jackson Academy	Emergent Project	Advertisement	\$106,500		6/21/10
Newark	Weequahic High School	Emergent Project	Advertisement	\$2,471,114		7/6/10
Newark	Avon Avenue Elementary School	Emergent Project	Advertisement	\$409,506		7/8/10
Newark	Roberto Clemente Elementary School	Emergent Project	Advertisement	\$933,207		7/8/10
Newark	Speedway Elementary School	Emergent Project	Advertisement	\$96,925		7/8/10
Newark	Bragaw Elementary School	Emergent Project	Advertisement	\$372,802		7/8/10
Paterson	ECC at 14th Street	Emergent Project	Award		\$215,000	7/16/10
Newark	East Side High School	Emergent Project	Advertisement	\$1,377,818		7/14/10
Newark	Malcolm X. Shabazz High School	Emergent Project	Advertisement	\$2,676,698		7/14/10
Camden	Washington Elementary School	Emergent Project	Award		\$48,750	7/19/10
Camden	Broadway School	Emergent Project	Award		\$55,619	7/21/10
Paterson	Sage Adult High School	Emergent Project	Award		\$328,000	7/23/10
Newark	Warren Street High School	Emergent Project	Advertisement	\$1,576,844		7/23/10
Newark	Dr. William Horton Elementary School	Emergent Project	Advertisement	\$680,527		7/23/10
Newark	Barringer High School	Emergent Project	Advertisement	\$283,799		7/23/10
Paterson	School #10	Emergent Project	Award		\$109,900	7/26/10
Newark	South Street Elementary School	Emergent Project	Advertisement	\$809,835		7/27/10
Camden	Fetters School	Emergent Project	Award		\$42,651	8/10/10
East Orange	Garfield Jackson Academy	Emergent Project	Award		\$139,000	8/27/10
Newark	Avon Avenue Elementary School	Emergent Project	Award		\$387,000	8/31/10
Passaic	William B. Cruise School #11	Emergent Project	Award		\$1,516,746	9/2/10
Newark	Roberto Clemente Elementary School	Emergent Project	Award		\$992,000	9/3/10
Passaic	Thomas Jefferson Elementary School	Emergent Project	Award		\$231,000	9/7/10
Trenton	Central High School	Emergent Project	Award		\$134,702	9/8/10
Newark	Wilson Avenue Elementary School - Design Services	Emergent Project	Award		\$178,174	9/23/10
Passaic	School #6	Emergent Project	Award		\$742,000	9/27/10
Newark	Malcolm X. Shabazz High School	Emergent Project	Award		\$2,347,000	10/1/10
Newark	Weequahic High School	Emergent Project	Award		\$1,488,000	10/6/10
Newark	Barringer High School	Emergent Project	Award		\$311,000	10/13/10
Camden	Camden High School	Emergent Project	Award		\$125,950	10/21/10
Newark	Bragaw Elementary School	Emergent Project	Award		\$626,881	10/21/10
Paterson	Don Bosco Academy	Emergent Project	Award		\$87,725	10/21/10
Newark	East Side High School	Emergent Project	Award		\$1,430,000	10/28/10

Work Advanced Under the Christie Administration (January 1, 2010 - September 30, 2014)

33X

District	Project	Project Category	Activity	Construction Cost Estimate (CCE)	Contract Award Amount	Date
Newark	South Street Elementary School	Emergent Project	Award		\$997,000	11/4/10
Camden	Sharp Elementary School	Emergent Project	Advertisement	\$226,130		1/7/11
Newark	Dr. William Horton Elementary School	Emergent Project	Award		\$732,000	1/31/11
East Orange	Warwick Institute	Emergent Project	Advertisement	\$625,500		2/25/11
East Orange	Houston Academy	Emergent Project	Advertisement	\$960,247		3/24/11
Camden	Molina Elementary School	Emergent Project	Advertisement	\$1,236,609		3/24/11
East Orange	Ecole de Louverture Elementary School	Emergent Project	Advertisement	\$2,505,978		3/25/11
Camden	Sharp Elementary School	Emergent Project	Advertisement	\$194,598		4/15/11
Newark	Science Park High School	Emergent Project	Award	\$196,146		4/29/11
Phillipsburg	Phillipsburg High School	Emergent Project	Advertisement	\$270,875		5/2/11
Newark	Roberto Clemente Elementary School - Consultant	Other Capital Work	Advertisement	\$696,765		5/19/11
Pemberton	Bragaw Elementary School - Consultant	Emergent Project	Award		\$11,930	5/19/11
Camden	ECC #1	Corrective Work	Award		\$11,930	5/19/11
Jersey City	Molina Elementary School	Emergent Project	Award		\$176,000	5/19/11
East Orange	PS 3 & MS 4 - Consultant Services	Other Capital Work	Award		\$2,498,000	5/31/11
East Orange	Johnnie L. Cochrane Academy	Emergent Project	Advertisement	\$251,400		6/9/11
East Orange	Warwick Institute	Emergent Project	Advertisement	\$200,938		6/17/11
Irvington	Union Avenue Middle School	Emergent Project	Award		\$557,000	6/22/11
Trenton	Central High School	Emergent Project	Award		\$1,063,000	6/23/11
East Orange	Houston Academy	Emergent Project	Award		\$59,730	6/24/11
Pateron	Don Bosco Academy	Emergent Project	Award		\$538,100	6/24/11
Newark	Science Park High School	Emergent Project	Award		\$303,993	6/29/11
Jersey City	PS 3 & MS 4 - Consultant Services	Emergent Project	Award		\$275,000	6/29/11
East Orange	Ecole de Louverture Elementary School	Other Capital Work	Award		\$156,511	6/30/11
Newark	Science Park High School - Consultant	Emergent Project	Award		\$187,777	7/6/11
Jersey City	ECC #13	Emergent Project	Advertisement	\$20,000		7/7/11
Newark	Science Park High School	Abatement, Demo & Site Improvements	Advertisement	\$1,063,542		7/28/11
Jersey City	PS 3 & MS 4 - Consultant Services	Emergent Project	Advertisement	\$360,000		8/1/11
East Orange	Johnnie L. Cochrane Academy	Other Capital Work	Award		\$152,200	8/5/11
Newark	Science Park High School - Consultant	Emergent Project	Award		\$218,800	8/18/11
Newark	Science Park High School	Other Capital Work	Award		\$19,900	9/7/11
Jersey City	ECC #13	Abatement, Demo & Site Improvements	Advertisement	\$20,000		9/13/11
Phillipsburg	Phillipsburg High School	Other Capital Work	Award		\$673,673	10/20/11
Keansburg	Caruso Elementary School - Early Site Package	Capital Project	Award		\$667,040	10/20/11
Elizabeth	Elizabeth High School - Early Site Package	Capital Project	Advertisement	\$1,082,473		10/20/11
Long Branch	George L. Catrambone Elementary School	Capital Project	Advertisement	\$2,215,000		12/5/11
Keansburg	Caruso Elementary School - Early Site Package	Capital Project	Advertisement	\$33,201,924		12/20/11
Camden	Morgan Village Middle School - Demolition	Capital Project	Award		\$870,000	1/27/12
Pateron	PS #24	Emergent Project	Advertisement	\$2,487,506		2/3/12
Pateron	Public School #16 - Early Site Package	Capital Project	Award		\$13,280	2/10/12
Elizabeth	Elizabeth High School - Early Site Package	Capital Project	Advertisement	\$2,288,170		3/27/12
Jersey City	Public School 20 - Early Site Package	Capital Project	Award		\$1,587,500	4/16/12
Camden	East Camden Middle School	Emergent Project	Advertisement	\$1,351,603		4/17/12
West New York	Harry L. Bain - Westminster Building Demolition	Capital Project	Advertisement	\$3,125,904		4/24/12
Camden	Morgan Village Middle School - Demolition	Capital Project	Advertisement	\$1,427,167		5/8/12
New Brunswick	A. Chester Redshaw Elementary School	Capital Project	Award		\$1,870,887	5/21/12
Jersey City	PS 3 & MS 4 - Design Services	Other Capital Work	Advertisement	\$41,411,806		5/30/12
Newark	Wilson Avenue Elementary School	Emergent Project	Advertisement	\$1,320,200		5/31/12
Pateron	International High School	Capital Project	Advertisement	\$2,678,776		6/1/12
Pateron	Marshall Street Elementary School - Soil Removal	Capital Project	Advertisement	\$496,858		6/1/12
Pateron	Public School #16 - Early Site Package	Capital Project	Advertisement	\$101,626		6/13/12
Pateron	PS 6	Emergent Project	Award		\$1,376,000	6/14/12
Jersey City	Elementary School #3 - Early Site Package	Capital Project	Advertisement	\$1,566,875		6/22/12
Newark	Oliver Street Elementary School - Early Site Package	Capital Project	Advertisement	\$2,776,200		6/25/12
			Advertisement	\$2,362,831		6/27/12

34X

District	Project	Project Category	Activity	Construction Cost Estimate (CCE)	Contract Award Amount	Date
Elizabeth	Elizabeth High School	Capital Project	Advertisement	\$53,500,000		7/11/12
Greater Egg Harbor	Cedar Creek HS	Capital Project	Advertisement	\$464,000		7/17/12
Camden	East Camden Middle School	Emergent Project	Award		\$2,679,000	7/19/12
Jersey City	Public School 20 - Early Site Package	Capital Project	Award		\$874,444	7/20/12
West New York	Harry L. Bain - Warminster Building Demolition	Capital Project	Award		\$1,350,000	7/20/12
Elizabeth	Elizabeth High School - CM Services	Capital Project	Advertisement	\$2,184,746		7/23/12
Newark	Wilson Avenue Elementary School	Emergent Project	Award		\$1,940,000	8/7/12
Paterson	Marshall Street Elementary School - Early Site Package	Capital Project	Award		\$82,013	8/22/12
Long Branch	George L. Catrambone Elementary School	Capital Project	Award		\$27,500,000	8/22/12
Jersey City	PS 3 & MS 4 - Design Services	Other Capital Work	Award		\$200,000	8/29/12
Paterson	PS 6	Emergent Project	Award		\$1,483,300	9/7/12
Newark	Oliver Street Elementary School - Early Site Package	Capital Project	Award		\$1,844,444	9/13/12
Greater Egg Harbor	Cedar Creek HS	Capital Project	Award		\$384,444	9/20/12
Pascale	Henry Street Elementary School	Capital Project	Advertisement	\$27,802,475		9/28/12
Elizabeth	Elizabeth High School - CM Services	Capital Project	As of September 28, 2012, over \$200 million in contracts have been awarded			
New Brunswick	A. Chester Redshaw Elementary School	Capital Project	Award		\$2,138,900	10/4/12
		Capital Project	Award		\$34,872,000	10/9/12
Jersey City	Elementary School #3 - Early Site Package	Capital Project	As of October 9, 2012, over \$100 million in contracts have been awarded			
Paterson	International High School	Emergent Project	Award		\$1,869,000	10/10/12
Newark	Ridge Street Elementary School	Emergent Project	Award		\$546,000	11/8/12
Newark	Oliver Street Elementary School	Capital Project	Advertisement	\$731,826		11/21/12
Newark	West Side High School	Emergent Project	Award	\$38,867,000		11/29/12
Newark	Hawkins Street Elementary School	Emergent Project	Award		\$51,117	11/29/12
Newark	Elliott Street Elementary School	Capital Project	Advertisement	\$700,042		12/16/12
Camden	Sharp Elementary School	Emergent Project	Advertisement	\$36,320,000		12/27/12
Newark	Sussex Avenue Elementary School	Emergent Project	Award		\$144,626	1/15/13
Newark	Oliver Street Elementary School - CM Services	Capital Project	Advertisement	\$424,283		1/28/13
Burlington City	Burlington City High School	Capital Project	Advertisement	\$995,000		1/29/13
Jersey City	Public School 20 - CM Services	Capital Project	Advertisement	\$15,000		1/31/13
Phillipsburg	Phillipsburg High School	Capital Project	Advertisement	\$1,550,000		2/15/13
		Capital Project	Advertisement	\$87,097,636		2/15/13
Paterson	Marshall Street Elementary School	Capital Project	As of February 11, 2013, over \$300 million in contracts have been awarded			
		Capital Project	Advertisement	\$26,525,000		2/12/13
Trenton	Central High School West	Emergent Project	As of February 12, 2013, over \$400 million in contracts have been awarded			
Paterson	Marshall Street Elementary School - CM Services	Capital Project	Advertisement	\$1,170,180		2/20/13
Jersey City	Elementary School #3	Capital Project	Advertisement	\$1,723,596		2/21/13
Newark	Ridge Street Elementary School	Emergent Project	Award	\$34,213,000		2/25/13
Jersey City	Public School 20	Capital Project	Advertisement	\$757,000		2/26/13
Newark	Elliott Street Elementary School - CM Services	Capital Project	Advertisement	\$28,867,800		3/6/13
Burlington City	Burlington City High School	Capital Project	Award	\$1,025,000		3/19/13
East Orange	Ecole de Louverture Elementary School	Emergent Project	Advertisement	\$239,563		3/23/13
Newark	Hawkins Street Elementary School	Emergent Project	Award	\$713,000		3/25/13
Jersey City	PS 3 & MS 4	Other Capital Work	Advertisement	\$696,607		3/26/13
Camden	HB Wilson Elementary School	Other Capital Work	Advertisement	\$1,543,142		3/27/13
Pascale	Henry Street Elementary School	Capital Project	Award		\$28,900,000	4/9/13
Newark	PS #1	Emergent Project	Award		\$1,040,570	4/15/13
Newark	Sussex Avenue Elementary School	Capital Project	Award		\$40,895,000	4/17/13
West New York	PS #5	Emergent Project	Award		\$452,000	4/17/13
Newark	Alma-Flag Elementary School	Emergent Project	Award		\$1,192,466	4/18/13
Harrison	Washington Middle School	Emergent Project	Award		\$470,250	4/23/13
Jersey City	Elementary School #3 - CM Services	Capital Project	Award		\$281,779	4/26/13
Trenton	Trenton Central High School - Design Services	Capital Project	Advertisement	\$1,200,000		4/30/13
Newark	Elliott Street Elementary School	Capital Project	Award	\$605,000		4/30/13
		Capital Project	As of May 1, 2013, over \$200 million in contracts have been awarded			
		Capital Project	Award		\$37,937,000	5/1/13

35X

District	Project	Project Category	Activity	Construction Cost Estimate (CCE)	Contract Award Amount	Date
East Orange	Ecole de Louverture Elementary School	Emergent Project	Award		\$248,000	5/13/13
Passaic	Wm. B. Cruise Memorial School #11	Emergent Project	Award		\$1,334,945	5/13/13
Trenton	Central High School West	Emergent Project	Award		\$1,325,000	5/14/13
Camden	Pyne Point Middle School	Emergent Project	Award		\$101,966	5/15/13
Paterson	Don Bosco Academy - UST Removals	Other Capital Work	Advertisement	\$184,277		5/21/13
Vineland	Vineland Sr. High School South - Design Services	Emergent Project	Advertisement	\$177,000		5/29/13
Bridgeton	Buckshutem & Quarter Mile Lane Elementary Schools	Capital Project	Advertisement	\$43,414,000		5/31/13
Elizabeth	Elizabeth High School	Capital Project	As of May 31, 2013, over \$500 million in contracts have been awarded			
Phillipsburg	Phillipsburg High School	Capital Project	Award		\$42,977,700	5/31/13
Jersey City	PS 3 & MS 4	Capital Project	Award		\$80,490,000	6/5/13
Irvington	Union Avenue Middle School	Other Capital Work	Award		\$688,000	6/10/13
Irvington	Madison Avenue Elementary School	Emergent Project	Award		\$2,397,018	6/11/13
Salem	Salem High School	Emergent Project	Award		\$247,511	6/11/13
Irvington	Chancellor Avenue Elementary School	Emergent Project	Award		\$647,217	6/13/13
Paterson	Marshall Street Elementary School	Emergent Project	Award		\$555,490	6/13/13
Newark	Oliver Street Elementary School - CM Services	Capital Project	Award		\$29,345,000	6/18/13
Paterson	Marshall Street Elementary School - CM Services	Capital Project	Award		\$1,207,951	6/20/13
Passaic	School #12	Capital Project	Award		\$1,522,607	6/21/13
Camden	Joseph C. Caruso Elementary School	Emergent Project	Award		\$458,812	6/26/13
Jersey City	HB Wilson Elementary School	Capital Project	Advertisement	\$32,434,000		6/27/13
Jersey City	Elementary School #3	Other Capital Work	Award		\$1,072,444	7/15/13
Newark	Elliot Street Elementary School - CM Services	Capital Project	Award		\$33,487,500	7/16/13
West New York	Harry L. Bain Elementary School - Design Services	Capital Project	As of July 16, 2013, over \$400 million in contracts have been awarded			
Trenton	Trenton Central High School - Design Services	Capital Project	Award		\$1,031,178	7/17/13
Irvington	University Middle School	Capital Project	Advertisement	\$472,199		7/22/13
Paterson	Don Bosco Academy - UST Removals	Emergent Project	Award		\$430,980	7/25/13
Salem City	Salem Middle School	Other Capital Work	Award		\$2,816,095	7/26/13
Paterson	PS #16 - Existing School Demolition	Emergent Project	Award		\$158,740	7/26/13
Bridgeton	Buckshutem & Quarter Mile Lane Elementary Schools - CM Services	Capital Project	Advertisement	\$548,727		7/29/13
Orange	Orange Middle School - Design Services	Capital Project	Advertisement	\$2,970,000		8/15/13
Jersey City	Public School 20 - CM Services	Emergent Project	Award		\$144,713	8/15/13
Paterson	PS #16	Capital Project	Award		\$1,102,736	8/21/13
Jersey City	Public School 20	Capital Project	Advertisement	\$31,917,000		8/28/13
Newark	South Street Elementary School - Early Site Package	Capital Project	Award		\$28,735,000	9/16/13
Vineland	Vineland Senior High School South - Design Services	Capital Project	Advertisement	\$9,355,798		9/17/13
Paterson	PS #16 - Existing School Demolition	Emergent Project	As of September 17, 2013, over \$600 million in contracts have been awarded			
West New York	Harry L. Bain Elementary School - Design Services	Capital Project	Award		\$117,095	9/20/13
Passaic	Henry Street Elementary School - Design Services	Capital Project	Award		\$486,000	10/9/13
Bridgeton	Broad Street Elementary School	Capital Project	Award		\$484,910	10/21/13
Jersey City	Elementary School #3 - CM Services	Emergent Project	Award		\$230,000	10/22/13
Bridgeton	Buckshutem & Quarter Mile Lane Elementary Schools	Capital Project	Award		\$80,405	10/29/13
Camden	Bonsall Elementary School	Capital Project	Award		\$1,140,962	11/4/13
Irvington	Irvington High School	Emergent Project	Award		\$45,613,770	11/12/13
Millville	Millville High School and Lakeside Middle School - Design Services	Emergent Project	Award		\$59,120	11/14/13
Paterson	PS #16 - CM Services	Capital Project	Advertisement	\$1,068,000		11/14/13
Newark	South Street Elementary School - Early Site Package	Capital Project	Advertisement	\$1,188,000		12/20/13
Bridgeton	Buckshutem & Quarter Mile Lane Elementary Schools - CM Services	Capital Project	Award		\$8,262,700	1/2/14
Paterson	PS #16	Capital Project	Award		\$4,697,636	1/3/14
Keansburg	Joseph C. Caruso Elementary School - CM Services	Capital Project	As of January 13, 2014, over \$500 million in contracts have been awarded			
Trenton	Joseph C. Caruso Elementary School	Capital Project	Award		\$34,944,000	1/17/14
Trenton	Trenton Central High School	Emergent Project	Advertisement	\$1,231,500		1/27/14
			Award		\$34,333,000	1/31/14
			Award		\$309,630	2/3/14

36X

District	Project	Project Category	Activity	Construction Cost Estimate (CCE)	Contract Award Amount	Date
Garfield	James Madison School #10 - Demolition & Early Site Package	Capital Project	Advertisement	\$1,270,800		2/19/14
Gloucester City	Gloucester City New ES/MS	Capital Project	Advertisement	\$40,367,000		3/14/14
Orange	Orange Middle School	Emergent Project	Advertisement	\$1,593,409		3/20/14
Newark	Chancellor Avenue Elementary School - Design Services	Emergent Project	Award		\$82,610	4/1/2014
Newark	Science Park High School - Design Services	Emergent Project	Award		\$75,300	4/1/2014
Paterson	PS #16 - CM Services	Capital Project	Award		\$1,198,800	4/1/2014
Trenton	Hedgepath Williams School - Design Service	Emergent Project	Award		\$56,420	4/8/2014
Keansburg	Joseph C. Canuso Elementary School - CM Services	Capital Project	Award		\$1,109,378	5/1/2014
Millville	Millville High School and Lakeside Middle School - Design Services	Capital Project	Award		\$698,500	5/1/2014
Garfield	James Madison School #10 - Demolition & Early Site Package	Capital Project	Award		\$1,057,000	6/2/2014
Orange	Orange Middle School	Emergent Project	Award		\$1,047,000	6/4/2014
Elizabeth	New Elementary School	Capital Project	Advertisement	\$42,713,000		6/9/2014
Long Branch	New High School	Other Capital Work	Award		\$1,691,825	6/10/2014
Gloucester City	Gloucester City ES/MS	Capital Project	Award		\$40,000,000	8/6/2014
Gloucester City	Gloucester City ES/MS	Capital Project	Advertisement	As of August 6, 2014, over \$600 million in contracts have been awarded		
Trenton	Trenton Central High School - Temporary Fencing	Capital Project	Advertisement	\$1,350,000		8/8/2014
Trenton	Trenton Central High School - Temporary Fencing	Capital Project	Advertisement	\$123,053		8/8/2014
			Award		\$139,900	9/23/2014

37X



STATE OF NEW JERSEY SCHOOLS DEVELOPMENT AUTHORITY

[HOME](#)
[GENERAL INFORMATION](#)
[About SDA](#)
[Mission Statement](#)
[State Comptroller/ Investigations Division](#)
[FAQs](#)
[Employment](#)
[DESIGN](#)
[DOING BUSINESS WITH SDA](#)
[SCHOOL PROJECTS](#)
[GOVERNING LAWS & REGULATIONS](#)
[NEWS & PUBLICATIONS](#)
[SDA BOARD & MANAGEMENT](#)
[CONTACT US](#)

[Home](#) > [General Information](#) > About SDA

About SDA

Authorization of New Funding

On July 9, 2008, legislation was enacted authorizing \$3.9 billion in additional funding for the New Jersey Schools Development Authority (SDA).

The legislation allocates \$2.9 billion for 31 special-needs districts, known as SDA Districts. The SDA manages and funds 100 percent of eligible project costs in the former Abbott districts.

The legislation also allocates \$1 billion to leverage construction in New Jersey's Regular Operating Districts (RODs) and includes \$50 million for vocational schools. The SDA administers grants for RODs, which manage their own projects.

The legislation fulfilled a pledge made in a January 22, 2008 letter from the State Attorney General to the New Jersey Supreme Court indicating the intent to seek passage of legislation to fund school construction in SDA Districts. Consistent with the Attorney General's letter, the legislation dedicates a portion of existing state income tax proceeds to fund the debt service on the additional borrowing.

As a result of the legislation's approval, the Authority has adopted a New Funding Allocation and Capital Plan consisting of 52 school projects. It is advancing 26 SDA District projects that were deferred for construction in April 2007 due to a funding shortfall that was unknown when the projects were approved in July 2005 by the New Jersey Schools Construction Corporation (SCC), the SDA's predecessor agency. (An additional deferred project, a pedestrian bridge for the new elementary school at Marshall and Hazel in Paterson, is now considered part of the new school construction itself.) It also will build 26 additional schools. The 26 newly selected schools come from a statewide prioritization plan, based on educational need, which was created by the N.J. Department of Education (DOE). Click here to view a presentation on the New Funding Allocation and Capital Plan.

Funding for RODs will be provided through grants, with a minimum state share of 40 percent for eligible project costs. DOE has accepted applications for the initial round of funding for the program. Only projects that are 100 percent eligible for state support and included in one of at least three prioritization "levels" are being considered by DOE, although districts may request debt service aid for other projects. For more information, click here.

The New Jersey Economic Development Authority (EDA) floats bonds to provide funding for the SDA

The legislation also directed the SDA, in consultation with the State Comptroller, to cause an audit to be conducted of any school facilities project that has a state share exceeding \$10 million.

In addition, the legislation charged SDA to conduct a study several potential cost saving measures. Specifically SDA was asked to research the areas of standardized design, bulk supply agreements and the use of consistent preventive maintenance protocols to ensure maximum efficiency and lifespan of building components and systems. That study can be found here: http://www.njsda.gov/RP/reports/Cost_Savings_Report.pdf

SDA Project Accomplishments

Overall, as of June 1, 2013, the SDA had completed 702 projects in SDA Districts, including 133 major projects including: 59 new schools; 42 extensive additions, renovations and/or rehabilitations; 26 other major projects and 6 demonstration projects. Demonstration projects, funded by the SDA, and under its oversight, are managed by a municipal redevelopment entity and redeveloper and are designed to be the cornerstone of revitalization efforts. The total also includes 354 health and safety projects, 67 emergent projects, and 148 grant projects managed by SDA Districts. Click the following links to see the lists of completed projects and active construction projects.

As of January 2013, the SDA had executed New Jersey ROD grants impacting 1,491 schools and 507 districts. The total State share of \$2.6 billion leverages projects costing a total of \$8 billion. Approximately 87 percent of New Jersey ROD school districts have benefited from the program.

Origins of the School Construction Program

In 1998, the New Jersey Supreme Court ruled in the Abbott v. Burke case that the State must provide 100 percent funding for all school renovation and construction projects in special-needs school districts. According to the Court, aging, unsafe and overcrowded buildings prevented children from receiving the "thorough and efficient" education required under the New Jersey Constitution.

In response, the New Jersey Educational Facilities Construction and Financing Act (the "Act") was enacted on July 18, 2000, launching the School Construction Program and placing responsibility under the EDA. Full funding for approved projects was authorized for the 31 special-needs districts, then known as Abbotts. Grants totaling 40 percent of eligible costs were made available to the remaining districts.

Overall, the act authorized \$6 billion in funding for the Abbott districts, \$2.5 billion for RODs and \$100 million for vocational districts. In July 2002, then-Governor James E. McGreevey issued Executive Order No. 24 directing the EDA School Construction and Financing Program to be reconstituted as a new subsidiary corporation called the New Jersey Schools Construction Corporation (SCC). The SCC was given the mission of streamlining the approach to school construction and moving projects expeditiously to completion. It was delegated all responsibilities under the Act except for the power to incur indebtedness, which remains with EDA. The program promptly launched a series of health-and-safety improvements across New Jersey, totaling 354 projects, and began building new schools and major additions and renovations.

In April 2005, a report by the State Inspector General found the SCC's program suffered from a wide range of internal weaknesses that left it vulnerable to "waste, fraud and abuse of taxpayer dollars." The agency began an overhaul as a result.

In July 2005, as a result of discovering that funds were insufficient, the corporation determined it could complete only a limited number of additional projects. The SCC Board approved its first Capital Plan, designating 59 projects, suspending work on the remaining 315.

Also in July 2005, the SCC determined that funds had been exhausted for its highly successful ROD grant program.

School Construction Program Reform

Critical reforms took place in January 2006. An Interagency Working Group on School Construction was established to make recommendations regarding further reforms designed to protect taxpayer dollars, provide accountability and move the program forward.

Under its new management team, numerous reforms were implemented. The agency no longer works on every project approved by DOE without considering availability of funds. Now, projects are prioritized by educational need, and before a project can begin, a comprehensive budget and schedule must be approved by the SDA Board.

Change orders and unanticipated costs are minimized because the agency halted the practice of beginning construction before design is complete, and designing projects before all land is under SDA control.

Furthermore, the SDA has instituted an aggressive cost-recovery program that has recouped millions of dollars for significant project errors by architects, contractors and project management firms.

Establishment of the SDA

Legislation creating the SDA was signed into law on August 6, 2007. The SDA, an independent authority in but not of the Department of Treasury, is the successor to the SCC.

Numerous reforms resulted from the 2007 legislation establishing the SDA. Under the legislation, the school construction agency is no longer a subsidiary of the EDA, even though the EDA retains its financing role for the school construction program. The SDA operates in but not of Treasury.


The number of public Board members was authorized to increase from seven to 11. Members are nominated by the Governor and confirmed by the Senate. Members must

You have background checked and are relevant to the New Jersey State Library mission. The Authority is required to report to the Legislature every six months.

Also due to the 2007 legislation, the SDA developed regulations that will allow for delegating the management of projects to SDA Districts (formerly known as Abbott Districts), as authorized by the legislation of August 2007.

Top of Page



[SDA Privacy Notice](#) | [Contact Us](#) | [Legal Statement](#) | [Accessibility Statement](#) 

SDA: [Home](#) | [General Information](#) | [Design](#) | [Doing Business with SDA](#) | [School Projects](#) | [Governing Laws & Regulations](#)
[News & Publications](#) | [SDA Board & Management](#) | [Contact Us](#)

Statewide: [NJ Home](#) | [Services A to Z](#) | [Departments/Agencies](#) | [FAQs](#) | [NJ State Privacy Notice](#)

Copyright © 2011 State of New Jersey
New Jersey Schools Development Authority



STATE OF NEW JERSEY SCHOOLS DEVELOPMENT AUTHORITY

HOME

GENERAL INFORMATION

▶ About SDA

▶ State Comptroller/ Investigations
Division

FAQs

▶ Employment

DESIGN

DOING BUSINESS WITH SDA

SCHOOL PROJECTS

GOVERNING LAWS & REGULATIONS

NEWS & PUBLICATIONS

SDA BOARD & MANAGEMENT

CONTACT US



GENERAL INFORMATION

[Home](#) > [General Information](#) > [Frequently Asked Questions](#)

Frequently Asked Questions

The following is a list of frequently asked questions (FAQs) concerning the New Jersey Schools Development Authority's role and responsibilities under the school construction program and answers to these questions. If you have a question concerning the SDA's policies, plans or procedures that is not included on this list, you can **contact us** and your question will be answered promptly.

New Funding for the School Construction Program

School Construction as Economic Stimulus

General Information

SDA Districts
Regular Operating Districts

'Green' Construction

Professional Consultants (*Architects, Engineers, Landscape Architects, Planners, Surveyors, and Construction Management, etc.*)

Prequalification Procedures
Procurement Process

Contractors and Subcontractors

Prequalification Process
Procurement Process

Equitable Employment and Business Opportunities

Funding for the School Construction Program

What funding is available for the School Construction Program?

On July 9, 2008 legislation was signed authorizing \$3.9 billion in additional funding for the New Jersey Schools Development Authority (SDA).

The legislation allocates \$2.9 billion for 31 special-needs districts, known as SDA Districts. The SDA manages and funds 100 percent of eligible project costs in SDA Districts.

The legislation also allocates \$1 billion to leverage construction in New Jersey's Regular Operating Districts (RODs) that includes \$50 million for vocational schools. The SDA administers grants for RODs, which manage their own projects.

The school construction program was originally allocated \$8.6 billion in 2000: \$6 billion for SDA Districts and \$2.6 billion for RODs, including \$100 million for vocational schools. That funding has been fully committed to projects, although not completely disbursed.

Where does funding for the School Construction Program come from?

Money for school construction funding is provided by New Jersey Economic Development Authority (NJEDA) School Facilities Construction Bonds. In April 2010 Governor Christie announced the approval of the sale of \$500 million in bonds by the NJEDA. Through March 2012, the NJEDA had issued \$8.65 of the \$12.5 billion of bonds authorized by EFCFA. Further financing activity generally will coincide with future cash flow requirements for already-committed projects.

In July 2012, the NJEDA approved the sale of \$425,000,000 in bonds to further the school construction program.

[Top of Page](#)

School Construction as Economic Stimulus

How is the SDA contributing to economic stimulus efforts in NJ?

SDA projects play a vital role in the economic stimulus efforts of the state. The SDA's current portfolio of active projects is valued at over \$2.2 billion – including the 2011 and 2012 Capital Project portfolios (more than \$1B), additional projects in construction (\$86M), emergent projects (\$43M) and Regular Operating District grants (\$743M state share).

You Are Viewing an Archived Report from the New Jersey State Library

In September 2012, Governor Christie announced that over the next six months, New Jersey's construction industry will benefit from an investment of more than \$500 million dollars in school facilities projects that will either start construction, or be advertised for construction throughout the state, boosting the Garden State economy and creating jobs.

General Information

When was the SDA created?

The SDA was established on August 6, 2007 under the provisions of P.L. 2007, c. 137 (Program and Governance Reform) as an independent authority in but not of the Department of Treasury. It replaced the New Jersey Schools Construction Corporation (SCC), which had been a subsidiary of the New Jersey Economic Development Authority (EDA), and eliminated the requirement that half of its governing-body members also be EDA Board members.

What additional changes resulted from the creation of the SDA?

Changes to the Board

Authority members are required to have backgrounds directly relevant to the program's mission. The Board consists of the Commissioner of Education, the Commissioner of the Department of Community Affairs, the State Treasurer, and the Chief Executive Officer of the Economic Development Authority and is authorized to have 11 public members appointed by the Governor with the advice and consent of the Senate.

At least one public member must have expertise in law enforcement, while the remaining public members must have knowledge or expertise in real estate development, construction management, finance, architectural or building design, or any other related field.

Reporting Requirements

The SDA is required to report to the Governor and the Legislature every six months on its progress. This is done through the SDA Biannual Report

Prioritization of Projects

Projects are now prioritized by the Department of Education (DOE), based on educational need. The SDA collaborates with the DOE to sequence those projects.

Land Acquisition Controls

The SDA has the ability to acquire property before municipal approvals or variances are granted, preventing speculators from increasing costs.

Delegation of Projects

The August 2007 legislation establishing the SDA provided a mechanism for delegating projects to SDA Districts that are deemed capable and qualified by the DOE, and determined by SDA to have the capacity to manage the projects. The DOE and SDA have each developed sets of regulations to address these issues:

http://njsda.gov/RP/PoliciesAndRegulations/pdfs/Regulations_PDF/19_34B.pdf.

What reforms have been undertaken by the SDA?

The SDA has undergone comprehensive reform since January 2010:

Internal Restructuring

In June 2010 the SDA implemented a new organizational structure that will increase fiscal accountability and improve the overall operations of the Authority. The new structure moves away from a departmental model for the delivery of school projects to a "team based" approach, involving appropriate staff in all aspects and phases of a construction project working as one unit. This structure will provide for greater continuity and better communication throughout the entire life cycle of a project, which will result in more cost-effective delivery of schools.

Recouping Costs to Protect Taxpayers from Paying for Others' Mistakes

An Environmental Cost Recovery Team was established to recover funds from responsible parties for the costs of environmental remediation of project sites. The SDA's Office of Chief Counsel is working to recover funds from responsible parties for project delays and design errors as well. Since January 2010, the SDA has recouped \$16.1M through various cost recovery efforts.

Cost Savings Initiatives

The SDA has made improvements to project management, in-sourcing information technology purchasing, in-sourcing safety services, mileage reimbursement, rent and utility expenses; temporary staffing services; and a reduction of parking expenses.

Transparency of Authority Action

The SDA is committed to eliminating any potential for wasteful practices or wrongdoing in the school construction program. Accordingly, the SDA cooperates with the Investigations Division of the Office of the State Comptroller (OSC) to review and investigate SDA operations and processes as needed. The SDA CEO stays in regular contact with the Division and refers matters requiring investigation for follow-up.

Standardization

The New Jersey Schools Development Authority (SDA), in an effort to implement standardized designs for SDA school facilities projects, has been developing methods to utilize standardization in all public school facilities projects in the State of New Jersey that are managed by the SDA. The SDA has developed and released its "Materials and Systems Standards Manual",

You are viewing an Archived Report from the New Jersey State Library
 Construction Details Manual and Kits of Parts. For more information, please visit
www.njsda.gov/Design/index.html.

Besides the SDA, who is responsible for carrying out the School Construction Program?

Attorney General

The Attorney General's (AG) Office develops and reviews contracts, memoranda of understanding, regulations, procedures, and other documents associated with the implementation of the program. The AG provides advice and acts as legal counsel for SDA.

Department of Community Affairs

The Department of Community Affairs, Division of Government Services' ("DCA") main focus is on the contracting process to ensure that contracts comply with the Public Schools Contract Law (PSCL) and associated statutes. DCA has developed a series of checklists that school districts are required to complete to "certify" that its procurement of professionals was done in accordance with the requirements of the PSCL. Permits for school facility projects managed by SDA are issued by DCA.

Department of Education

DOE is responsible for reviewing and approving each school district's Long Range Facilities Plan (LRFP) and each school construction project to ensure that the plans are in compliance with State building standards, referred to as "facilities efficiency standards" and for conformity with educational requirements.

The department, in consultation with districts, in 2008 developed a list of critically needed projects based on LRFPs and ranked primarily by educational priority. The SDA, in consultation with DOE, develops the Prioritization Plan for SDA Districts.

In 2011, an updated prioritization list and DOE educational priority scores were developed:
http://njsda.gov/Archive/2011/03/03.02.11/SDA_Capital_Plan_Program_Report_Presentation.pdf

DOE also oversees the application and review process for the ROD grant program.

Department of Labor

The Department of Labor ("DOL") monitors the payment of prevailing wages on all school construction projects. All contractors must be "registered" with the DOL to work on school construction projects.

Department of Treasury

Treasury will coordinate the classification of all contracting and professional consulting firms with the SDA and work with SDA on the issuance of the \$12.5 billion in State-contracted debt. The SDA is considered in but not of the Department of Treasury.

The Treasury Department also registers businesses as Small Business Enterprises (SBE) under current set-aside State law requirements. It is the only certification that the SDA recognizes for registration of consultants and of contractors as SBE firms.

State Police

Investigatory background checks of all professional consultants and construction contractors are performed by the State Police.

Where can I get assistance with additional questions regarding the school construction program?

An SDA Help-Line has been established at 609-341-5900 to answer your questions about the school construction program.

Who can I contact to report wrongdoing?

If you suspect wrongdoing at any SDA construction sites or offices, please contact the Investigations Division Hotline at (855) 672-8477.

Top of Page

SDA Districts

What are SDA Districts?

The SDA is responsible for financing 100% of eligible costs. It also procures design, construction and construction management contracts for DOE-approved facilities projects in these school districts, as well as acquiring land when necessary. The SDA manages most projects for these districts. SDA projects are categorized as either a Capital Project or an Emergent Project. Click here to view the list of SDA Districts.

What are SDA's responsibilities with respect to SDA Districts?

The SDA is responsible for financing 100% of eligible costs. It also procures design, construction and construction management contracts for DOE-approved facilities projects in these school districts, as well as acquiring land when necessary. The SDA manages most projects for these districts. SDA projects are categorized as either a Capital Project or an Emergent Project.

Top of Page

Regular Operating Districts

What is a Regular Operating District?

A Regular Operating District (ROD) is any New Jersey school district that is not designated as

Is grant money available for Regular Operating Districts?

An additional \$1 billion for ROD grants was made available in legislation enacted on July 9, 2008.

Only projects that are 100 percent eligible for state support and included in one of at least three prioritization "levels" will be considered by DOE, although districts may request debt-service aid for other projects. The program funds at least 40 percent of eligible project costs in RODs. The first allocation in March 2009 preliminarily approved \$181 million in state funding for 400 projects. Through August 2012, the SDA had executed 866 grants with a State share of \$271.5 million from the new funding allocation. For more information on the ROD Grant program, click [here](#).

What are Section 15 grants?

Section 15 grants are also known as ROD Grants. These grants were authorized under the Educational Facilities Construction and Financing Act of 2000, and provided additional funding in legislation enacted on July 9, 2008. School districts generally receive 40 percent of eligible project costs. School districts must finance the balance of the cost of their facilities project.

To be eligible for funding, a school project needs to meet the Facilities Efficiency Standards (a guideline for space allowance) as well as have elements deemed necessary for a thorough and efficient education by DOE.

How are ROD Grant Payments disbursed?

Grants are paid out as districts attain specific project milestones.

For projects with a final eligible cost of more than \$250,000:

Design phase payment (representing reimbursement of payments to design and other consultants)	10%
35% Construction Completion	30%
65% Construction Completion	40%
Substantial Completion	15%
Final Completion	5%

For projects with a final eligible cost that is less than or equal to \$250,000:

50% Construction Completion	50.5%
Substantial Completion	45%
Final Completion	0.5%

At each request for payment by the district, SDA sends a Grant Inspection Team to view documents justifying disbursement. Teams also physically inspect the school.

[Top of Page](#)

'Green' Construction**Is the SDA incorporating energy efficiency into the design of school facilities?**

Yes. The SDA is committed to the construction of high-performance, sustainable schools. The SDA LEED Policy currently requires design consultants to design schools that meet a minimum of 29 LEED points complying with USGBC LEED for Schools Version 2.0. The SDA's New Jersey 21st Century Schools Design Manual defines criteria for the design and construction of 21st Century schools that comply with LEED standards, benefit communities and are cost-efficient.

[Top of Page](#)

Professional Consultants (Architects, Engineers, Landscape Architects, Planners, Surveyors, and Construction Management, etc.)**Prequalification Procedures**

Effective July 1, 2004 to become an SDA Consultant you must have a current prequalification with the New Jersey Department of Treasury, Division of Property Management and Construction (DPMC). Your firm must be prequalified by the SDA in order to submit responses to the SDA's requests for proposals. Consultants having this prequalification are required to fill out the SDA Prequalification Application, which once received is reviewed for completeness and forwarded to the New Jersey State Police for a moral integrity screening. Upon review from the State Police, the SDA will prequalify a firm in the same discipline(s) and rating(s) as DPMC. The effective date will be the date SDA issues a prequalification letter. The expiration date will be the same as DPMC.

Please note: The SDA requires all subconsultants of any tier in the DPMC Disciplines listed below, whose contract is in an amount which is equal to or greater than \$500,000, be prequalified by the SDA.

P001 Architecture

44X

You Are Viewing an Archived Report from the New Jersey State Library

P002 Electrical Engineering
 P003 HVAC Engineering
 P004 Plumbing Engineering
 P005 Civil Engineering
 P007 Structural Engineering
 P011 Environmental Engineering
 P015 Land Surveying
 P029 Construction Management
 P038 Asbestos Safety Control Monitoring
 Materials Testing Laboratories (P066 – P103)

Does updating my DPMC prequalification automatically update my SDA prequalification?

No. The DPMC and the SDA are separate agencies. Whenever you renew your DPMC Registration, you must submit a copy of your Notice of Prequalification to SDA along with a prequalification questionnaire in order to update your SDA prequalification. If you revise your DPMC Prequalification during the term of your prequalification, forward a copy of the revised Notice of Prequalification to SDA with a cover letter requesting revision of your SDA prequalification.

Is there a fee that must be submitted with the SDA Prequalification Application?

There are no fees associated with the SDA Prequalification Application.

Why does my business need Business Registration Certification?

State law (Public Law 2001, c.134) prohibits contracting with any state, county or municipal agency, unless the business has a Business Registration from the New Jersey Department of Treasury, Division of Revenue and Enterprise Services. This form may be completed and filed online with the NJ Treasury Division of Revenue and Enterprise Services.

What is a "moral integrity" screening?

Eligibility to participate in the school construction program is contingent upon moral integrity screening by the NJ State Police. The moral integrity background screening verifies the accuracy of the information provided by the applicant, including ownership/key persons and disclosure of any determination for violations of federal, State or local laws, rules or regulations. The NJ State Police will contact your firm directly should they require additional information or clarification.

How do I confirm that my firm is on the SDA's list of prequalified professional consultants?

The entire list of prequalified professional consultants with their addresses, contact information and authorization levels are listed on the SDA's website. The list is searchable according to company name, locality, profession, and specialty or work classification.

Top of Page

Procurement Process

How do I submit a proposal to SDA to do work as a professional consultant for a school facilities project?

Design consultant projects use a traditional Request for Qualifications/Request for Proposal (RFQ/RFP) process whereby any prequalified firm meeting the criteria as listed in the advertisement is eligible to submit a proposal. Firms wishing to participate must have an active SDA prequalification as of the date when RFQ proposals are due. RFQ proposals must be submitted to the SDA on or before the due date specified in the advertisement. RFQ proposals will be used by the SDA to determine a shortlist of firms that will then be issued an RFP, which will require submission of formal detailed technical proposals.

See the advertisement page for Design Consultants for more details.

What is the process used for evaluating proposals?

All proposals for work to be done in school districts are independently reviewed by a selection committee comprised of a school district representative and SDA staff, then ranked, negotiated and awarded to the consultant having the best qualifications for the project.

What criteria ("other factors") are used by the SDA to select professional consultants?

The selection committee evaluates the technical qualifications of the firms so that they can be ranked in terms of their ability to perform the engagement.

The criteria for this evaluation include:

1. Understanding of the project.
2. Team experience.
3. Experience of key team members.
4. Appropriateness of staffing.
5. Project approach.
6. The Firm's approach to maintaining schedule.
7. The Firm's approach to maintaining budget.

Following this "qualifications based" selection process, SDA staff then open the fee proposals and negotiate a fee with the highest ranked firm. If an agreement is reached, a contract is awarded; however, if the parties cannot come to an agreement, negotiations begin with the next ranked firm. This process continues, if necessary with successively ranked firms, until an agreement is reached and a contract is executed.

Top of Page

45X

Contractors and Subcontractors**Prequalification Process****What firms need SDA Prequalification to perform construction services on a school facilities project?**

All prime bidders and required subcontractors as identified in the bid advertisement need to be prequalified by SDA.

How does my firm get SDA Contractor Prequalification?

To become an SDA contractor, you must have a current classification with the NJ Department of Treasury, Division of Property Management and Construction (DPMC).

Contractors and subcontractors may obtain prequalification status from SDA based upon the same trade or work classification and aggregate rating limit issued by DPMC.

A contractor having this DPMC classification may then fill out the SDA Prequalification form, which once received, is forwarded to the New Jersey State Police for SDA for "moral integrity" screening. However, in order to qualify to bid on school facility projects, firms must also have Public Works Contractor Registration and Division of Revenue and Enterprise Services Registration.

Does updating my DPMC classification automatically update my SDA prequalification?

No. The DPMC and the SDA are separate agencies. Whenever you **renew** your DPMC, you must submit a copy of your Notice of Classification to SDA along with a prequalification questionnaire in order to update your SDA prequalification. If you **revise** your DPMC Classification during the term of your prequalification, forward a copy of the revised Notice of Classification to SDA with a cover letter requesting revision of your SDA prequalification.

Is there a fee that must be submitted with the SDA Prequalification Application?

There are no fees associated with the SDA Prequalification Application.

Where can I find these required forms?

A one-stop shop on our website is in place where you can find all the above mentioned forms. Contractor prequalification page

What is a "moral integrity" screening?

Eligibility to participate in the school construction program is contingent upon moral integrity screening by the NJ State Police. The moral integrity background screening verifies the accuracy of the information provided by the applicant, including ownership/key persons and disclosure of any determination for violations of federal, State or local laws, rules or regulations. The NJ State Police will contact your firm directly should they require additional information or clarification.

How do I apply for "moral integrity" screening?

Once a contractor applies for SDA prequalification, the application is automatically sent to the New Jersey State Police for "moral integrity" screening.

What classifications/certifications does a subcontractor need to be eligible to do work in the school construction program?

In order to work on a school construction project, a subcontractor who is not bidding as a prime, and is not identified in the bid advertisement, needs:

- 1) Public Works Contractor Registration, The Division of Wage and Hour Compliance, NJ Department of Labor
- 2) Division of Revenue Certification, NJ Department of Treasury, Division of Revenue and Enterprise Services

These forms are available on the "one-stop shop" on our website. See the Contractor prequalification page

Please Note: The SDA requires all subcontractors of any tier in the DPMC Trade Classifications listed below whose contract is in an amount which is equal to or greater than \$500,000, be prequalified by SDA.

- C006 - CM as Constructor
- C007 - Design Build
- C008 - General Contractor
- C009 - GC/Alterations & Additions
- C019 - Concrete/Foundation/Footings/ Masonry work
- C021 - Demolition
- C029 - Structural Steel
- C030 - Plumbing
- C039 - HVAC
- C045 - Sprinkler Systems
- C047 - Electrical
- C066 - Roofing-Membrane EPDM
- C067 - Roofing-Membrane PVC/CPE/CSPE
- C068 - Roofing-Membrane Modified Bitumen
- C069 - Roofing-Urethane
- C070 - Roofing-Built Up
- C071 - Roofing-Metal
- C072 - Roofing-Tile/Slate/Shingles
- C092 - Asbestos Removal/Treatment
- C093 - Asbestos Removal/Mechanical

46X

How do I confirm that my firm is on SDA's list of prequalified contractors?

The entire list of prequalified professional consultants and contractors with their addresses, contact information and authorization levels are listed on this website. The list is searchable according to company name, locality, profession, and specialty or work classification.
http://njsda.gov/Business/Prequalification/Directory_search.asp

As a vendor of construction materials, do I need to be SDA prequalified?

No. A supplier of goods does not need SDA prequalification. However, if you would like to be eligible to participate in New Jersey's Set Aside Program, and your business enterprise qualifies as a Small Business Enterprise (SBE), you should file with the New Jersey Department of Treasury, Division of Revenue and Enterprise Services. The form may be found at this link:
<http://www.nj.gov/njbusiness/contracting/sbsa/index.shtml>

Are there any programs available for Small, Minority and Women Owned Business Enterprises?

Yes. The SDA sponsors a Small, Minority and Women-Owned Business Enterprise (SMWBE) Contractor Training Program for SMWBE firms that are able to obtain SDA prequalification. The program is a one day per week program for nine weeks. Participating firms are provided with instruction on how to business with the SDA. Classes in Accounting, Business, Project Budgeting, Project Management, Project Scheduling and, Marketing are provided. More information can be found at this link: <http://njsda.gov/Business/Compliance/SBE.html>

Top of Page

Procurement Process**Where do I find out about SDA school projects?**

Contractors will not be notified of school construction projects. All SDA school construction projects will be advertised in the classified section of the Newark Star-Ledger and Trenton Times newspapers. All of the projects will also be advertised on the SDA website.

What are the processes and criteria for the procurement of contractors for work undertaken by SDA?

SDA-initiated school facilities projects will be publicly advertised and awards will be made based upon "price and other factors." "Other factors" include an evaluation by SDA of the contractor's:

- (1) Professional references
- (2) Safety record
- (3) Prevailing wage record
- (4) SDA performance evaluations

As an SDA prime contractor, where can I identify small, women and minority owned businesses and subcontractors?

You can identify small, women and minority owned businesses from various NJ State department databases. However, SBE firms must be registered as such by the New Jersey Department of Treasury. The New Jersey Department of Treasury has made available its New Jersey Selective Assistance Vendor Information (NJSAVI) database. This database comprises a statewide listing of firms certified as a small, woman and minority owned business enterprises. Visit this link <http://www.nj.gov/njbusiness/contracting/> for NJSAVI information.

How can a subcontractor or a material supplier avail themselves of the economic opportunities presented by this landmark school construction program?

SDA posts the names and contact information of the prime contracting firms attending SDA mandatory pre-bid construction meetings. This attendee list is available on our website on the Construction Project Advertisements Page after the pre-bid construction meeting has taken place. These listings can serve as a marketing and networking resource to the subcontracting community who are seeking to provide materials and services for the school construction program.

Top of Page

Equitable Employment and Business Opportunities**How will the SDA address set-asides under the school construction program?**

The SDA oversees and implements an effective and pro-active Small Business Enterprise (SBE) program. SDA will abide by current State set-aside law and Executive Order 71. The law and Executive Order 71 provide for 25 percent of the total dollar of publicly advertised contracts awarded by SDA within a fiscal year to go to small business enterprises. The SDA continues to exceed the 25 percent mandate. The SBE total for 2011 was 78 percent.

How will the 25 percent SBE goal be met?

The 25 percent goal of the SDA SBE program can be met in two ways:

- 1) The SDA may designate certain contracts as set-aside contracts open to bid by SBE registered consultants or SBE registered prime contractors only. These contracts will be clearly identified in all contract advertisements as SBE set-aside contracts
- 2) For all contracts (including set-aside contracts), consultants and prime contractors are required to award contracts to SBE subconsultants and SBE subcontractors.

Top of Page



STATE OF NEW JERSEY SCHOOLS DEVELOPMENT AUTHORITY

HOME

GENERAL INFORMATION

DESIGN

DOING BUSINESS WITH SDA

SCHOOL PROJECTS

▶ SDA Capital Program

▶ Emergent Project Program

Grants

▶ Active Projects

▶ Completed Projects

▶ Visit Your School Facilities Project

▶ Project Reports

GOVERNING LAWS & REGULATIONS

NEWS & PUBLICATIONS

SDA BOARD & MANAGEMENT

CONTACT US



Home > School Projects > Grants

Regular Operating District Grants

In 2000, the Educational Facilities Construction and Financing Act provided an initial authorization of \$2.6 billion for grants to Regular Operating Districts (RODs), including \$100 million for vocational schools. This initial funding has been fully obligated.

On July 9, 2008 legislation was signed providing an additional \$1 billion in funding for RODs including \$50 million for vocational schools. The Department of Education (DOE) developed an application process to allocate these funds, which are disbursed by the SDA.

In May 2013, Governor Christie announced the single largest offering of this grant program with \$455 million in total available for projects in RODs and vocational schools. More information on the Grant Program for School Facilities Projects in RODs is available on the DOE Web site at: www.state.nj.us/education/facilities.

GRANT ELIGIBILITY

School districts are eligible to receive at least 40 percent of eligible project costs. For a school facilities project to be considered for grant funding, the proposed scope of work must be 100 percent eligible for State support. Funds may be used to address health and safety, overcrowding, provide spaces to deliver in-district programs for disabled students, or deliver full-day kindergarten facilities for school districts required to provide full-day preschool. Only projects that are 100 percent eligible for state support and included in one of at least three prioritization "levels" will be considered by DOE, although districts may request debt-service aid for other projects.

AWARDS

Following approval by the DOE, the project will be transmitted to SDA who will then offer a grant to the district. Upon proof of local share and completion of other required grant-related documents, the SDA is then able to execute a grant agreement.

PAYMENT

Grants are paid out as districts attain specific project milestones.

For projects with a final eligible cost of more than \$250,000:

Design phase payment (representing reimbursement of payments to design and other consultants)	10%
35% Construction Completion	30%
65% Construction Completion	40%
Substantial Completion	15%
Final Completion	5%

For projects with a final eligible cost that is less than or equal to \$250,000:

50% Construction Completion	50.5%
Substantial Completion	45%
Final Completion	4.5%

At each request for payment by the district, SDA sends a Grant Inspection Team to review documents justifying disbursement. Teams also physically inspect the school.



GRANT PROGRAM FOR SCHOOL FACILITIES PROJECTS

On July 9, 2008, legislation was enacted authorizing an additional \$3.9 billion in bonds to finance the State share of school facilities projects. The legislation allocates \$1 billion, including \$50 million for vocational schools, for grants for the State share of Regular Operating District (ROD) school facilities projects. Additionally, the legislation required DOE to establish a prioritization process for school facilities projects based on critical need. There have been 3 allocations for funding since the inception of the law.

Overview of Grant Program for School Facilities Projects for RODs, not including County Vocational School Districts

The following describes the current ROD grant program (allocation 4), including the application process, eligibility, and critical timelines for RODs, not including County Vocational School Districts (see below).

- **Grant applications will only be accepted and approved during the announced grant program timelines rather than on an on-going basis.**

Prior to July 9, 2008, grant funding was approved by the Department on a first-come first-served basis as projects were received. Per the Educational Facilities Construction and Financing Act, P.L. 2000, c. 72 (N.J.S.A. 18A: 7G-1 et seq.), as amended, the commissioner will establish a process for the allocation of grant funding. This process requires districts to submit project applications with grant requests by specific deadlines so that requests can be collectively considered and prioritized. It is critical that a complete district project application be submitted to the Department by the noted deadline. Incomplete submissions may not be reviewed and considered for grant funding in the requested allocation.

- **Projects requesting grants will be ranked according to a prioritization process.**

Per the Educational Facilities Construction and Financing Act, P.L. 2000, c. 72, as amended.

"... the commissioner shall establish a priority process for the financing of school facilities projects based upon the commissioner's determination of critical need... The priority project categories shall include, but not be limited to, health and safety, overcrowding in the elementary, middle, and high school grade levels, spaces necessary to provide in-district programs and services for current disabled students who are being served in out-of-district placements or in-district programs and services for the projected disabled student population, and full-day kindergarten facilities in the case of school districts required to provide full-day preschool."

What types of projects will be considered for grant funding and how will they be prioritized?

For a school facilities project to be considered for grant funding, the proposed scope of work must be 100% eligible for State support and be included in one of the priority "levels" described below. If the project scope is not 100% eligible for State support and/or the scope of work is not included in one of the three prioritization levels, the project will not be considered for grant funding. However, a district may request debt service aid if the proposed scope of work, or a portion of the proposed scope of work, is eligible for State support. Please note that

Grant Program for School Facilities Projects

the State share will be an amount equal to the district aid percentage, but not be less than 40% of the final eligible costs.

Once a school facilities project has been determined by the Department to have 100% eligible scope, it will be placed in one of three prioritization "levels" based on the proposed scope of work. If the proposed scope of work is applicable to more than one level, the project will be placed in the lower priority level. Levels 1 and 2 contain a mix of educational and capital maintenance scopes of work. Level 3 pertains to major educational projects involving renovation and/or new construction.)

LEVEL 1

Level 1 school facilities projects address the most critical operational building needs, including health and safety issues, and program mandates.

- **Essential building systems upgrades** (Repair or replacement of structural, mechanical/heating and cooling, electrical, and plumbing systems; Includes required refinishing work.)
- **Building skin** (Repair or replacement of roof, windows, masonry, etc.)
- **Building code issues**
- **ADA upgrades** (Includes site and building access, toilet room renovations.)
- **Hazardous material abatement** (Radon, lead, asbestos, etc.; Includes required refinishing work.)
- **Security and communications systems** (Includes essential systems such as public address, telephone, building entrance security.)
- **Site drainage** (To remediate an existing problem; Not in conjunction with new construction.)
- **Elementary school playgrounds** (Includes the upgrade or replacement of existing playgrounds to meet life cycle, safety, and/or consumer product safety codes; not applicable for new playgrounds.)
- **Renovated or new early childhood classrooms** (Includes the renovation and/or new construction of up to six pre-kindergarten and/or kindergarten classrooms. At least 75% of impacted net square feet in the proposed project must consist of pre-kindergarten and/or kindergarten classrooms. Only applicable for projects that address capacity for State-mandated universal preschool programs and full-day kindergarten in school districts required to provide full-day preschool.)
- **Special population needs** (For program expansion or educational adequacy; May include renovation and/or new construction. At least 75% of impacted net square feet in the proposed project must address special population space needs.)

LEVEL 2

Level 2 school facilities projects focus on the renewal of existing buildings, overcrowding, and/or improving the quality of existing instructional spaces.

- **Repair/replacement of existing building systems and components not included in Level 1**
- **Existing site upgrades, excluding athletic fields and tracks** (Includes upgrades to sidewalks, paving, fencing, and security lighting.)

Grant Program for School Facilities Projects

- **Renovation and/or new construction of capacity-generating classrooms to address overcrowding or substandard conditions** (At least 75% of impacted net square feet in the proposed project must consist of capacity-generating classrooms; Applicable projects may include general classrooms and specialized classrooms noted by the district to be capacity-generating, such as middle or high school science labs.)
- **Technology infrastructure upgrades** (For classroom instruction in accordance with Department's Technology Plan; Does not include equipment.)

LEVEL 3

Level 3 includes major school facilities projects that involve the renovation and/or expansion of existing schools or the construction of new schools. These projects typically address both capital maintenance and educational deficiencies.

- **Renovation and/or new construction projects, ranked according to:**
- **District-wide unhoused students and overcrowding**
- **Early childhood program accommodations**
- **FES compliance**
- **Use of temporary or leased facilities**
- **Building age**
- **Project scope**
- **Prior grant funding**

What if my district has already submitted a project to the Department?

If your district has already submitted a project to the Department for review, but approval has not been granted, and would like to participate in the grant process, your district must request a new project number and submit a new project application. For further information, please contact Frank LoDolce from the Office of School Facilities at (609) 292-7078.

Can a previously approved project be considered for grant funding?

If a school facilities project has been previously approved by the Department and the district would like it to be considered for grant funding, one of the following options, based on the type of project approval, can be selected:

- If the project was approved as an "Other Capital" project, the district must cancel the project application and resubmit a new project application to the Department in accordance with the grant deadlines noted above.
- If the project was approved for debt service aid funding, two options are available. If the district has accepted the preliminary eligible costs (PEC) as the final eligible costs (FEC), the district must cancel the project and resubmit a new project application to the Department. If the district has not accepted the PEC as the FEC, the district can request the school facilities project to be considered for grant funding. All cancellation requests and resubmissions must include a resolution from the local school board requesting

51 X

Grant Program for School Facilities Projects

the cancellation and resubmission of the specified project and meet the grant application deadlines noted above.

Do all school facilities projects have to go through the grant application process?

A school district is not required to participate in the grant application process. If your district does not elect to request a grant for a school facilities project you can request an "Other Capital" project approval if the project is either ineligible for state funding support or if the district chooses not to request state funding support, in the form of a grant. "Other Capital" projects will be reviewed and approved by the Department on an on-going basis according to current practice. These projects will be reviewed and approved by the Department according to current practice and can go to the voters for approval on any of the referenda days allowed by law.

What if a project is not selected to receive a grant?

If a project is not selected for grant funding, the district has four options, depending upon the type of project submitted.

- If the project met the criteria for inclusion in one of the three grant prioritization levels, the district may hold and resubmit the school facilities project for the next grant funding allocation. (The number of projects approved for grant funding in prioritization levels two and three will be impacted by state-wide grant funding requests since the maximum grant allocation per year is fixed. Therefore, competition for grant funding may vary for each allocation.)
- If the project scope was not applicable to one of the three prioritization levels, or contained work that prevented its placement in a higher priority level, the district may revise and resubmit the school facilities project for the next grant funding allocation.
- If the school facilities project has eligible costs for State support, the district may request debt service aid instead of a grant in accordance with current practices.
- If the district does not want to seek debt service aid, it may convert the project to an "Other Capital" project and fully fund the project without State funding support.

Can I find out if a project is eligible for grant consideration prior to submitting a project application?

A district can complete and submit the "ROD Grant Qualification Determination Request" form found on the Office of School Facilities' web site at <http://www.nj.gov/education/facilities/> for a preliminary determination as to whether the proposed project scope qualifies for grant consideration. Otherwise, the grant application is integrated within the Department's project application and no other forms are necessary. Please see the allocation schedules for specific information concerning official notification of grant approval.

Are school facilities projects involving solar or other renewable energy eligible for grant consideration?

Due to the limited funding available and the fact that alternative funding for these projects, at little or no cost to a school district (through a power purchase agreement (PPA) or an Energy Savings Improvement Program (ESIP)), these projects are not eligible for grant consideration in Allocation 4.

Grant Program for School Facilities Projects

Can a charter school submit a grant application?

School facilities projects at charter schools are not eligible for a ROD 4 grant. Pursuant to N.J.S.A.18A:36-10, "a charter school shall not construct a facility with public funds other than federal funds."

Are school facilities projects in SDA districts eligible for grant consideration?

School facilities projects in SDA districts are not eligible for the ROD grant program. Pursuant to N.J.S.A. 18A:7G-5, the Schools Development Authority manages school facilities projects in SDA districts.

Can a school facilities project or other capital project for which a construction contract has been awarded be converted to a project eligible for retroactive funding?

School facilities projects for which a construction contract has been awarded are not eligible for the ROD 4 grant program pursuant to N.J.A.C. 6A:26-3.2(b)14 and N.J.A.C. 6A:26-18.3(d)3.

What constitutes a complete school facilities project application submission for the purposes of the ROD 4 grant program?

The requirements for an application to be complete may be found at N.J.A.C. 6A:26. N.J.A.C.6A:26-3.3 provides, in part, the following: "All information in N.J.A.C.6A:26-3.2(b) must be provided to the Division before a school facilities project application shall be fully and accurately completed for purposes of obtaining review of the school facilities project..."

Grant Program for School Facilities Projects

Overview of Grant Program for School Facilities Projects for County Vocational Districts

The following describes the current ROD grant program (allocation 4), including the application process, eligibility, and critical timelines for County Vocational School Districts.

- **Grant applications will only be accepted and approved during the announced grant program timelines rather than on an on-going basis.**

In the past, grant funding was approved by the Department on a first-come first-served basis as projects were received. Per the Educational Facilities Construction and Financing Act, P.L. 2000, c. 72 (N.J.S.A. 18A: 7G-1 *et seq.*), as amended by P.L. 2008, c. 137, the County Vocational School Districts that did not receive grant funding from the original \$100,000,000 allocation will receive top priority for new grant funding. The commissioner will establish a process to determine which school facilities projects are the most needed. This process requires districts to submit grant applications by specific deadlines so that requests can be collectively considered and prioritized.

- **Projects requesting grants will be ranked according to a prioritization process.**

Per the Educational Facilities Construction and Financing Act, P.L. 2000, c. 72, as amended by P.L. 2008, c. 39, *"The school facilities projects of a county vocational school district that did not receive State support for its projects from the \$100,000,000 of bond proceeds originally allocated for the State share of county vocational school district school facilities projects pursuant to section 14 of P.L.2000, c.72 (C.18A:7G-14) shall receive priority in the allocation of the bond proceeds authorized for the State share of county vocational school district school facilities projects pursuant to P.L. 2008, c.39 provided that the county vocational school district demonstrates to the commissioner the need for the school facilities projects."*

What types of projects will be considered for grant funding and how will they be prioritized?

For a school facilities project to be considered for grant funding, the proposed scope of work must be 100% eligible for State support and be included in one of the priority "levels" described below. If the project scope is not 100% eligible for State support and/or the scope of work is not included in Level 1 or 2 prioritization level, the project will not be considered for grant funding. However, a district may request debt service aid if the proposed scope of work, or a portion of the proposed scope of work, is eligible for State support. Please note that the State share will be an amount equal to the district aid percentage, but not be less than 40% of the final eligible costs.

Once a school facilities project has been determined by the Department to have 100% eligible scope, it will be placed in one of the prioritization "levels" based on the proposed scope of work. If the proposed scope of work is applicable to more than one level, the project will be placed in the lower priority level. Levels 1 and 2 contain scopes of work addressing the most critical operational building needs, including health and safety issues, and Career and Technical Education program needs.

LEVEL 1

Grant Program for School Facilities Projects

- **Capital maintenance projects.** *(Maintenance intended to extend the useful life of a school facility, including upgrades and replacements of building systems, such as structure, enclosure, mechanical, plumbing and electrical systems, and can be considered to constitute or be part of a school facilities project.)*
- **Projects that address handicapped accessibility.** *(Includes site and building access, toilet room renovations; or program expansion or educational adequacy for special population needs.)*
- **Building code issues.**
- **Technology infrastructure.** *(For classroom instruction in accordance with Department's Technology Plan; does not include equipment.)*

LEVEL 2

- **Upgrades to existing vocational instructional space to meet certification requirements.**
- **Renovations to existing vocational instructional space to support new programs supported by the Office of Career and Technical Education.**
- **New construction for vocational instructional space to support new programs supported by the Office of Career and Technical Education.**
 - (No grant funding for new schools or any new construction other than vocational instructional spaces.)

Funding Prioritization Categories

A school facilities project with 100% eligible scope will be placed in one of four prioritization "categories" based on the amount of grant funding previously received by the County Vocational School District from the original \$100,000,000 grant allocation.

1. County vocational school districts that received \$0 in State funding support for its school facilities projects from the prior allocation; or requesting a grant pursuant to N.J.A.C. 6A:26-11.1.
2. County vocational school districts, other than 1 above, that received less than \$1,000,000 in State funding support for its school facilities projects from the prior allocation ; or requesting a grant pursuant to N.J.A.C. 6A:26-11.1.
3. County vocational school districts that received greater than \$1,000,000 but less than \$5,000,000 in State funding support for its school facilities projects from the prior allocation; or requesting a grant pursuant to N.J.A.C. 6A:26-11.1.
4. County vocational school districts that received greater than \$5,000,000 in State funding support for its school facilities projects from the prior allocation; or requesting a grant pursuant to N.J.A.C. 6A:26-11.1.

What if my district has already submitted a project to the Department?

If your district has already submitted a project to the Department for review, but approval has not been granted, and would like to participate in the grant process, your district must request a new project number and submit a

Grant Program for School Facilities Projects

new project application. For further information, please contact Frank LoDolce from the Office of School Facilities at (609) 292-7078.

Can a previously approved project be considered for grant funding?

If a school facilities project has been previously approved by the Department and the district would like it to be considered for grant funding, one of the following options, based on the type of project approval, can be selected:

- **If the project was approved as an "Other Capital" project**, the district must cancel the project application and resubmit a new project application to the Department in accordance with the grant deadlines noted above.
- **If the project was approved for debt service aid funding**, two options are available. If the district has accepted the preliminary eligible costs (PEC) as the final eligible costs (FEC), the district must cancel the project and resubmit a new project application to the Department. If the district has not accepted the PEC as the FEC, the district can request the school facilities project to be considered for grant funding. All cancellation requests and resubmissions must include a resolution from the local school board requesting the cancellation and resubmission of the specified project and meet the grant application deadlines noted above.

Do all school facilities projects have to go through the grant application process?

A school district is not required to participate in the grant application process. There are two options if your district does not elect to request a grant for a school facilities project. The first option is to request an "Other Capital" project approval if the project is either ineligible for state funding support or if the district chooses not to request state funding support, either in the form of a grant or as debt service aid. "Other Capital" projects will be reviewed and approved by the Department on an on-going basis according to current practice. The second option is to request debt service aid for the eligible costs of the school facilities project. These projects will be reviewed and approved by the Department according to current practice and can go to the voters for approval on any of the referenda days allowed by law.

What if a project is not selected to receive a grant?

If a project is not selected for grant funding, the district has three options, depending upon the type of project submitted.

- If the proposed project contained outside of the eligible scope of work as defined above, the district may revise and resubmit the school facilities project. The resubmission must be completed no more than 30 days following the application deadline to allow the department time to review and approve the school facilities project and determine grant eligibility.
- If the school facilities project has eligible costs for State support, the district may request debt service aid instead of a grant in accordance with current practices.
- If the district does not want to seek debt service aid, it may convert the project to an "Other Capital" project and fully fund the project without State funding support.

56X

Grant Program for School Facilities Projects

Can I find out if a project is eligible for grant consideration prior to submitting a project application?

A district can complete and submit the "ROD Grant Qualification Determination Request" form found on the Office of School Facilities' web site at <http://www.nj.gov/education/facilities/> for a preliminary determination as to whether the proposed project scope qualifies for grant consideration. Otherwise, the grant application is integrated within the Department's project application and no other forms are necessary. Please see the allocation schedules for specific information concerning official notification of grant approval.

Are school facilities projects involving solar or other renewable energy eligible for grant consideration?

Due to the limited funding available and the fact that alternative funding for these projects, at little or no cost to a school district (through a power purchase agreement (PPA) or an Energy Savings Improvement Program (ESIP)), these projects are not eligible for grant consideration in Allocation 4.

Can a school facilities project or other capital project for which a construction contract has been awarded be converted to a project eligible for retroactive funding?

School facilities projects for which a construction contract has been awarded are not eligible for the ROD 4 grant program pursuant to N.J.A.C. 6A:26-3.2(b)14 and N.J.A.C. 6A:26-18.3(d)3.

What constitutes a complete school facilities project application submission for the purposes of the ROD 4 grant program?

The requirements for an application to be complete may be found at N.J.A.C. 6A:26. N.J.A.C. 6A:26-3.3 provides, in part, the following: "All information in N.J.A.C. 6A:26-3.2(b) must be provided to the Division before a school facilities project application shall be fully and accurately completed for purposes of obtaining review of the school facilities project...."

CHARLES B. MCKENNA

Charles McKenna currently serves as the Chief Executive Officer (CEO) of the New Jersey Schools Development Authority (SDA), having been elected by the SDA Board of Directors on January 2, 2014. Mr. McKenna most recently served as Chief Counsel to Governor Chris Christie and prior to that as Director of the New Jersey State Office of Homeland Security and Preparedness.

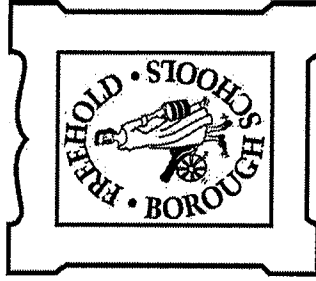
Mr. McKenna joined State government in 2010 following 18 years at the United States Attorney's Office, District of New Jersey. His last role there was as Chief of the Criminal Division, a position in which he directed attorneys responsible with prosecuting federal criminal violations.

From 2002 until 2008, Mr. McKenna served as Executive Assistant US Attorney under then US Attorney Chris Christie. In that role, he had executive oversight of all Criminal and Civil Division investigations as well as administrative responsibilities to ensure the efficient operation of the office.

Mr. McKenna received a J.D. in 1986 from St. John's University School of Law, where he graduated magna cum laude. He was awarded a Bachelor of Arts summa cum laude in 1982 from Fordham University.

A New York City native, Mr. McKenna resides in Essex County.

FREEHOLD BOROUGH PUBLIC SCHOOLS (K-8)



**TESTIMONY BEFORE JOINT COMMITTEE ON THE PUBLIC SCHOOLS
WEDNESDAY, DECEMBER 17, 2014
ROCCO TOMAZIC, ED.D.
SUPERINTENDENT**

58X

OUR STUDENTS

- Enrollment (12/9/14): 1,638
 - 1,623 in district
 - 15 out of district
- Ethnic/racial breakdown:
 - Hispanic 70.6%
 - White 16.2%
 - Black 10.5%
 - Asian 1.5%
 - Others 1.2%
- Free/reduced lunch: 76.9%
 - (Free 1,163; Reduced 98)



OUR SCHOOLS

- Freehold Borough Schools
 - Freehold Intermediate School (6-8)
 - Park Ave Elementary School (PK-5)
 - Freehold Learning Center (PK-5)
- Off site rentals in Freehold Township:
 - West Freehold Elementary – 4 Kindergarten classrooms
 - Marshall Erickson – 2 Kindergarten classrooms
- District functional building capacity: 1,148
 - Currently 475 unhoused in-district students
 - Overage placed in Freehold Township or squeezed into library/admin space with high class sizes

OX

OUR CLASS SIZES

- N.J.A.C. 6A:13-3.1 (High Poverty >40%/PL 2007, Chap 260)
 - Kindergarten – Grade 3: 21
 - Grade 4 & Grade 5: 23
 - Grade 6 – Grade 8: 24
- **Freehold Boro Class Sizes (including rented classrooms):**
 - K-3: 32 classes, 23 over standards (72%)
 - 4 classes at or above 25 students
 - 4/5: 13 classes, 11 over standards (85%)
 - 8 classes at or above 25 students
 - 6-8: 100 classes, 4 over standards (4%)
 - Includes Lang Arts, Math, Soc Studies, Science, Spanish

01/1X

OUR FACILITY IMPACTS

- Classroom shortage causes regular elementary class sizes to be too high
- Insufficient space to do pull out for special education resource and high intensity ESL
- Continued student growth without additional facilities will require returning to half-day Kindergarten, and beyond that, split sessions
- Ability to rent added space or use modular classrooms precluded by underfunding in the operating budget
- Libraries used for classrooms
- Lunch starts at 10:30am

62X

OUR REGIONAL PARTNERS

- Rise to high school (9-12) to:
 - Freehold Regional High School District
 - Monmouth County VoTech School District
- K-8 sending districts to FRHSD and 14/15 per student

Colts Neck	\$20,786	DFG I
Farmingdale	\$16,235	DFG D/E
Freehold Twp	\$15,841	DFG G/H
Howell	\$14,558	DFG F/G
Marlboro	\$14,304	DFG I
Manalapan/Englishtown	\$13,577	DFG G/H
Freehold Borough	\$11,462	DFG B

63x

2013 DEMOGRAPHIC STUDY

TABLE 3
FREEHOLD BOROUGH SCHOOL DISTRICT
STUDENT ENROLLMENT PROJECTIONS

School Year	Births 5 Yrs. Ago	PK	K	1st Gr.	2nd Gr.	3rd Gr.	4th Gr.	5th Gr.	PK-5 Total	6th Gr.	7th Gr.	8th Gr.	6-8 Total	UNGRADED	DISTRICT TOTAL
PROJECTIONS															
2013-14	244	57	166	180	178	162	170	141	1055	150	119	107	376	85	1515
		0.20	0.68	1.00	0.96	0.97	0.98	0.97		0.99	0.97	0.96			
2014-15	290	56	197	166	173	172	158	165	1089	139	146	115	399	92	1579
2015-16	287	56	195	198	159	167	168	154	1097	163	135	140	438	94	1629
2016-17	284	53	193	196	190	154	163	163	1112	152	158	130	439	95	1647
2017-18	272	59	185	194	188	183	150	158	1117	161	147	152	460	82	1659
NET DEVELOPMENT IMPACT		0	0	0	0	0	0	0	0	0	0	0	0	0	0
2017-18 TOTAL ENROLLMENT		59	185	194	188	183	150	158	1117	161	147	152	460	82	1659

- NOTES:
1. Births in the dashed box area were calculated by a regression analysis. Students in that year group have not been born or reported to date.
 2. The solid boxed area to the lower left of the table is an area of low confidence in that these children have not been born or reported to date.
 3. All calculations are carried to eight or more decimal places. Since there cannot be fractions of a student, the district total may vary by one or two students if added manually.

64X

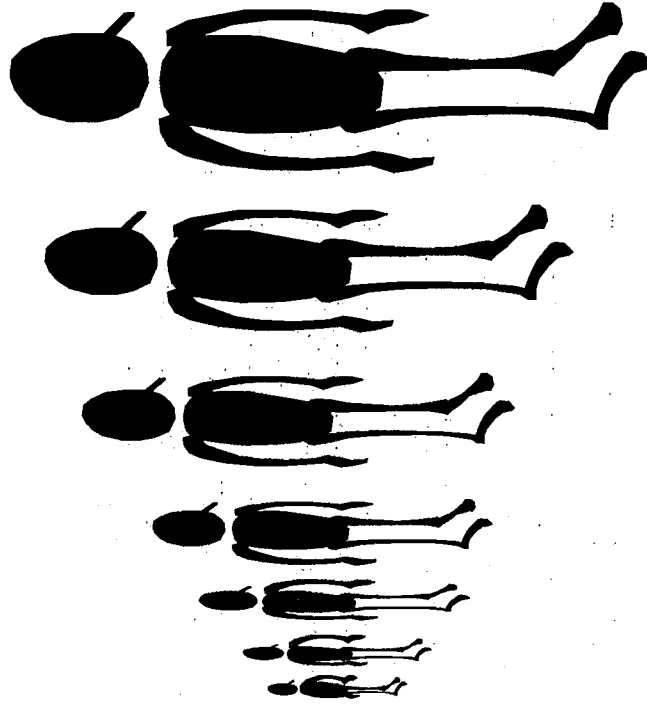
ACTUAL ENROLLMENTS

<u>School Year</u>	<u>Projected</u>	<u>Projected</u>	<u>Actual</u>
	<u>7/3/13</u>	<u>11/15/14</u>	
2012-2013			9/21/2012 1,526 6/24/2013 1,547
2013-2014	1,515		9/20/2013 1,570 5/30/2014 1,586
2014-2015	1,579		(12/9/14) 1,638
2015-2016	1,629	1,627	
2016-2017	1,647	1,638	
2017-2018	1,659	1,673	
2018-2019		1,667	
2019-2020		1,674	

65X

FREEHOLD INTERMEDIATE SCHOOL (6-8) INCREASE

2014-2015: 426
2015-2016: 471
2016-2017: 488
2017-2018: 516
2018-2019: 535
2019-2020: 591



66X

BUILDING MORE SPACE

- **District functional building capacity: 1,148**
 - Currently 475 unhoused in-district students
 - Overage placed in Freehold Township or squeezed into library/admin space with high class sizes
- **Additions/Renovations Proposed**
 - 17 regular classrooms
 - 5 small group classrooms
 - Additional classroom gym space at PAC
 - Additional library space at PAC
 - Additional cafeteria space at FLC and PAC
 - Health and safety upgrades to aging electrical and environmental systems

67X

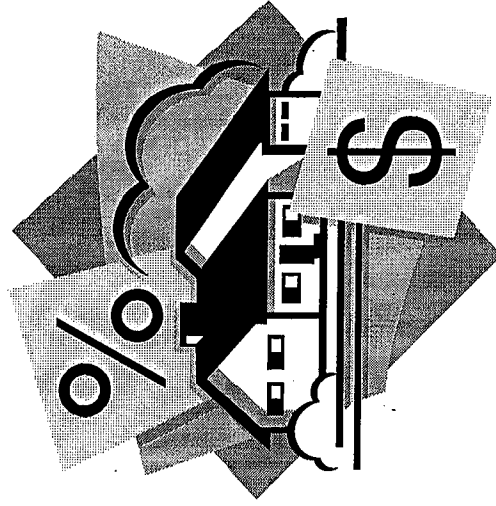
EFFECT OF CONSTRUCTION

- **Three years to build**
 - 2014-2015 – planning, bidding, construction (year 1)
 - 2015-2016 – construction (year 2)
 - 2016-2017 – construction (year 3)
 - 2017-2018 – ready for students
- **Upon completion**
 - New functional capacity of 1,581
 - Current capacity of 1,148 is 70.6% of current in-district need
 - 1,581 is 97.3% of current in-district needs
 - 1,581 is 95.2% of projected 2017-2018 enrollment of 1,659
 - 1,581 is 94.4% of projected 2019-2020 enrollment of 1,674

600

REFERENDUM ASSUMPTIONS

- 2014 Total Borough Assessed
Valuation: \$1,052,933,800
- Assessed Valuation Growth: None
- 2014 Assessed Valuation of Average
Home: \$255,600
- State Aid For Debt Service: 38.02%
- Bonds Term: 30 Years
- Bond Structure: Wrap-Around
Existing Debt
- Bond Borrowing Rate: 4.00%

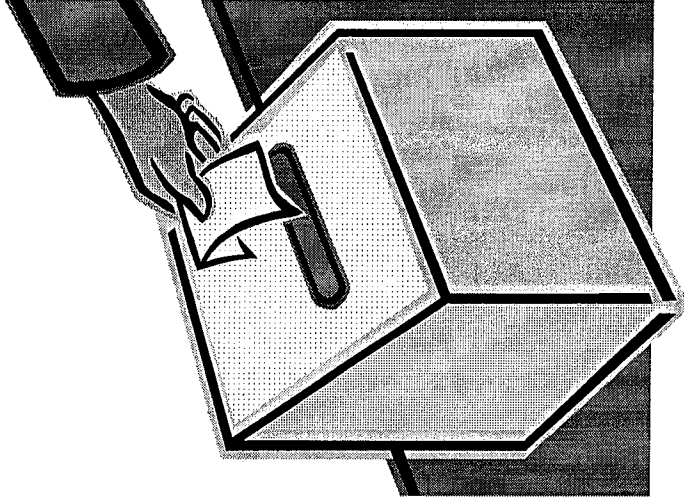


69X

70x

VOTING RESULTS

- Vote Tally Sept 30th:
 - Yes – 273
 - No – 374
- ~12% of registered voters cast a vote
- Vote Tally Dec 9th:
 - Yes – 241
 - No – 370
- Nor'easter a factor



7/1x

COMMON VOTER QUESTIONS

- Why not merge with Freehold Township?
- Why should voters pay for students of immigrants that are over crowding the housing?
- The voters rejected a referendum in 2005, 2006 and again in 2014 – why keep asking?
- Why should voters take on more taxes and debt when the state doesn't provide the required state aid (\$7M)?
- Why not keep renting space and avoid overbuilding?

72x

WHAT THE STATE CAN DO

- Fully fund SFRA
- Support legislative attempts to reduce underfunding
 - Move to just 10% under adequate (Sen Beck plan)
 - Ensure extra funds guaranteed year to year
- Secure some ROD grant funds especially for districts of low wealth and increasing student population
 - Former Abbots fully funded for facilities
 - All other districts, poor and wealthy, compete for the rest
- Support Commissioner overriding local electorate if local decisions negatively impact providing for a thorough and efficient education
 - Avoid federal civil rights issues

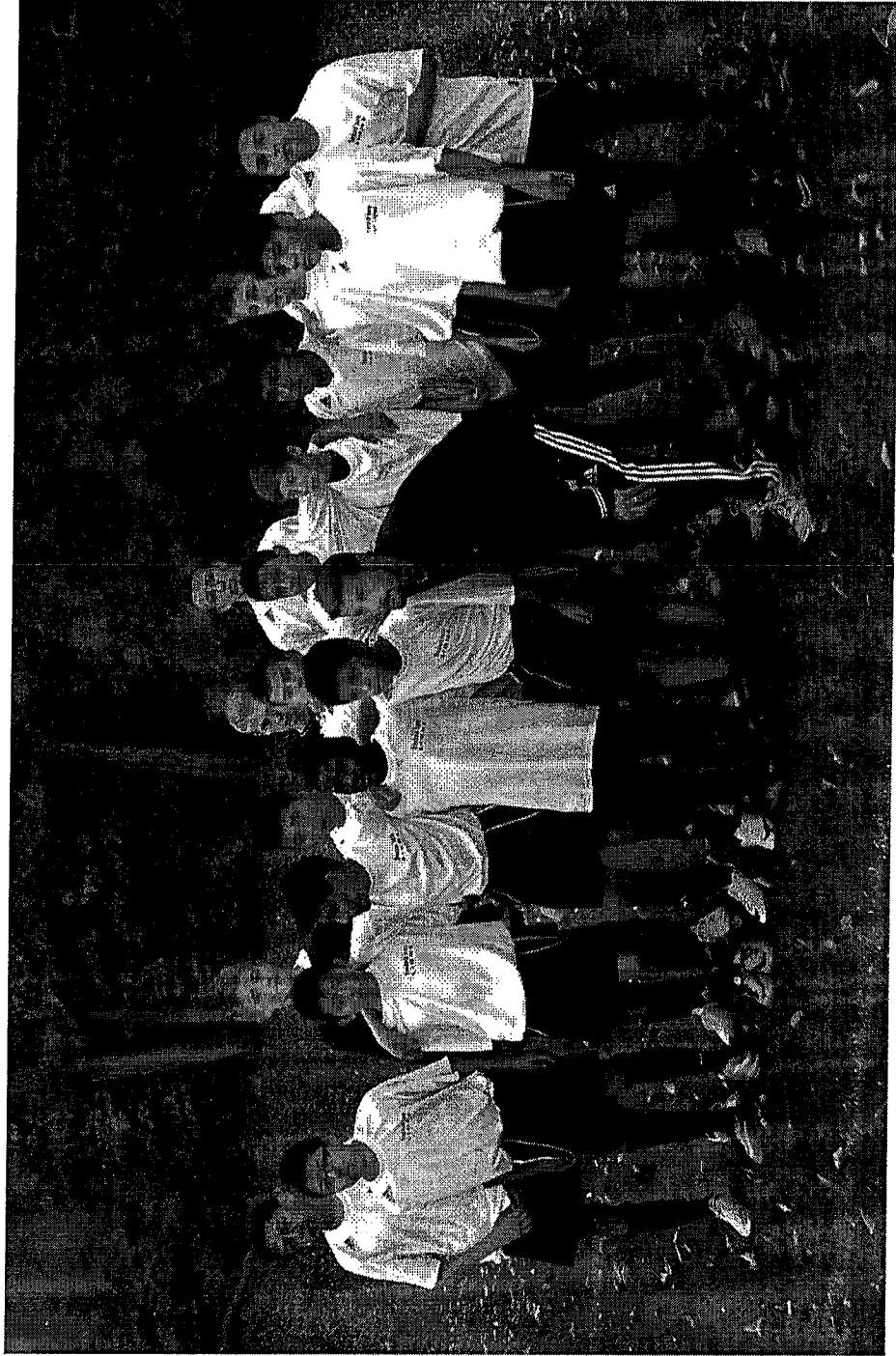
78x

OPTIONS MOVING FORWARD

- Try again
 - No indicator that repeated effort would be successful
- Try something different
 - Will keep looking for off site space, but classroom need is high
- Appeal to the Commissioner of Education to override
 - A move into rarely traveled territory
- Do nothing
 - Wrong decision for the students

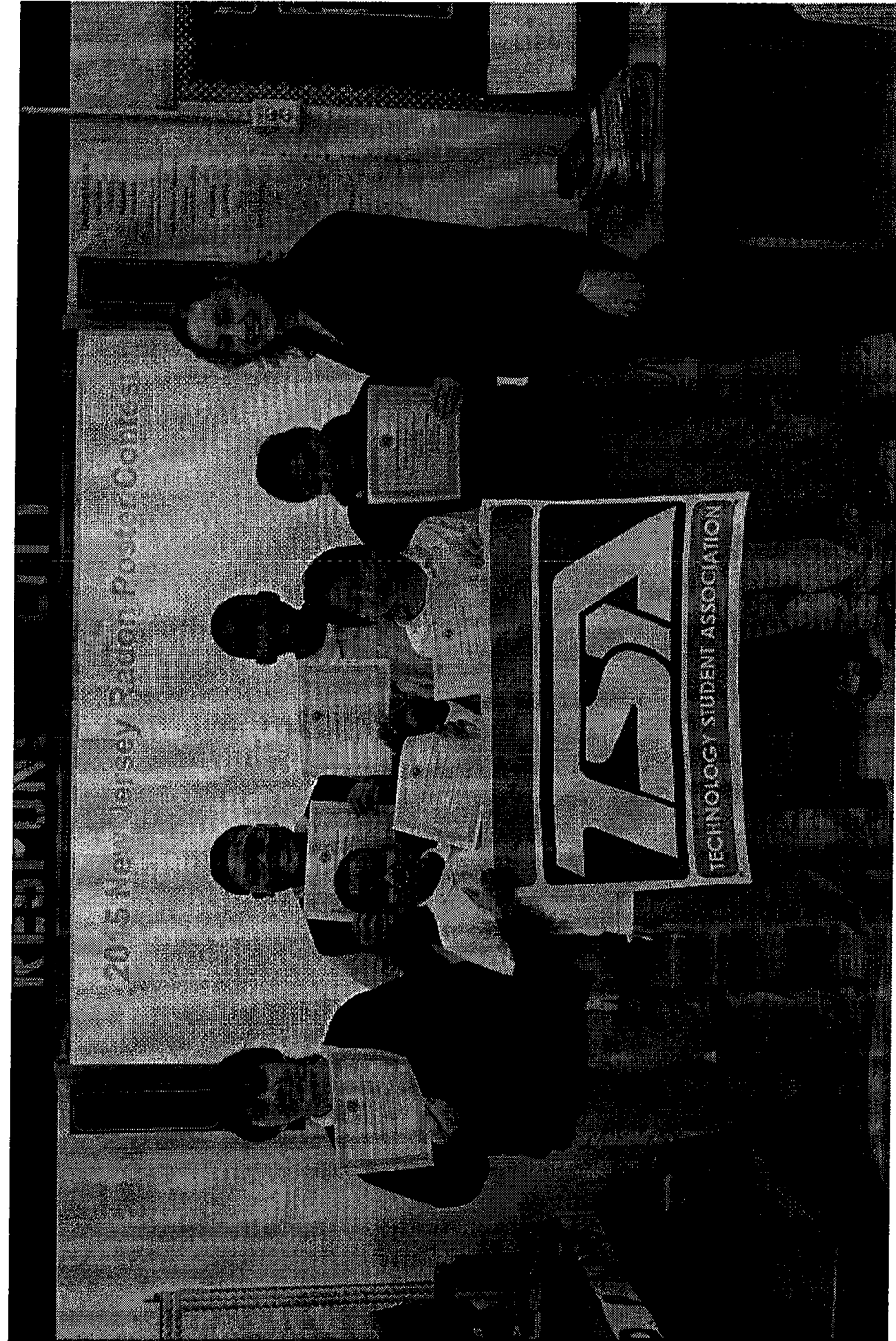
74x

DIVERSE DISTRICT



75X

PUSHING STEM



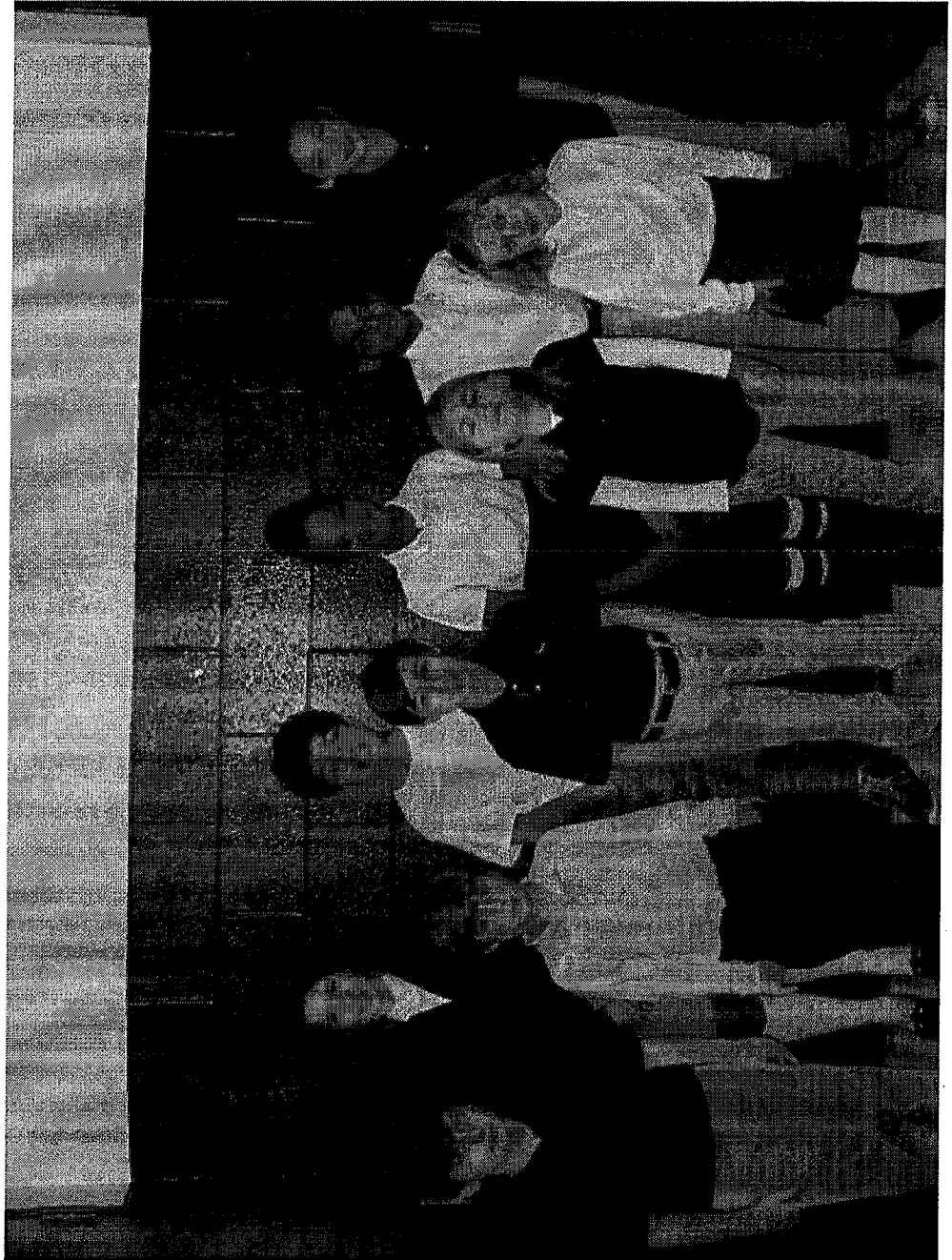
76X

EMBRACING TECHNOLOGY



77x

TAKING THE INITIATIVE

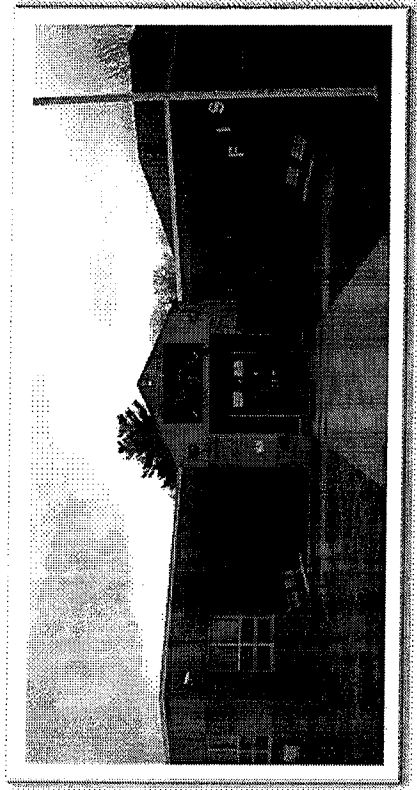
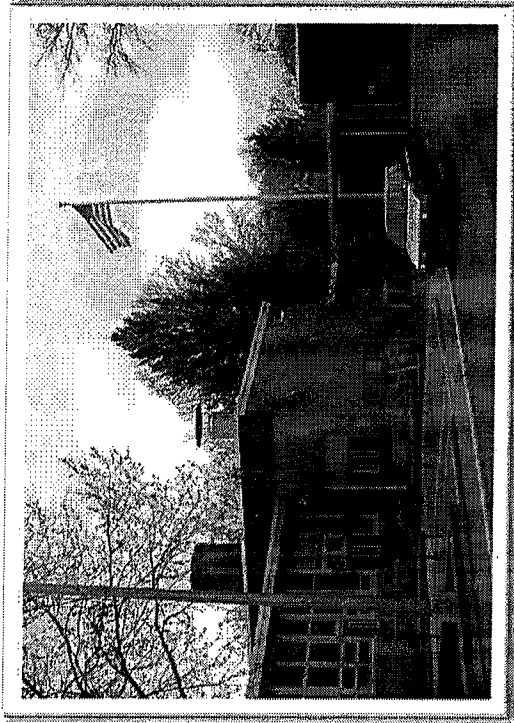


78x

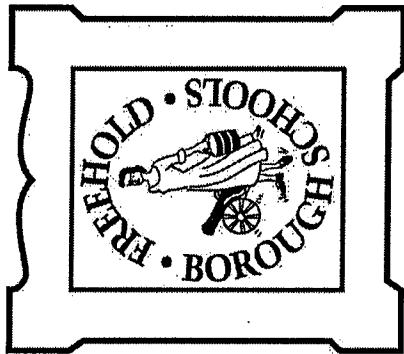
MOVING TO PARITY



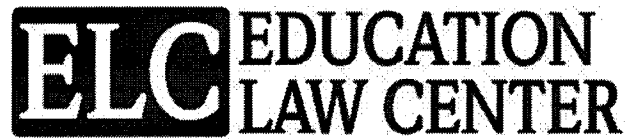
79x



THANK YOU



X08



STATEMENT ON SCHOOL CONSTRUCTION
JOINT COMMITTEE ON THE PUBLIC SCHOOLS

December 17, 2014

Senator Rice, Assemblywoman Jasey and members of the Joint Committee on the Public Schools, thank you for the opportunity to address the current challenges faced by New Jersey's school construction program. Today, I want to discuss the imminent need to authorize additional school construction funding.

The Schools Development Authority (SDA) is very close to exhausting all of the \$2.9 billion in bonding authority approved by the Legislature for the SDA districts in 2008. In the coming months, the SDA will find itself without the resources to meet district needs, whether those come in the form of emergent projects or the renovation or construction of out-dated, over-crowded and/or dilapidated school facilities.

In addition, with the grants allocated following the recent round of local referenda, the \$1 billion authorized by the Legislature for school construction and renovation in the non-SDA districts, the so-called Regular Operating Districts (ROD), has also been exhausted.

As you know well, New Jersey's school construction program is mandated by the Supreme Court's orders in the *Abbott* litigation and the implementing legislation and regulations. It is necessitated by the condition of many school buildings around the state. Providing our students with safe and adequate facilities is not only constitutionally required, but also essential to enhance, rather than detract from, the 21st-century learning we want our educators to provide and our students to attain. It is therefore incumbent on the Legislature to ensure that resources are available to continue the school construction program and provide students, families and communities with facilities that contribute to school success and community renewal, and ensure the provision of a thorough and efficient education to all New Jersey students.

With regard to the specific situation in the 31 SDA districts: those SDA districts that have not yet submitted updated Long Range Facilities Plans (LRFP) to the NJ Department of Education (NJDOE) were ordered on October 17 by an Administrative Law Judge to do so by mid-December. That decision is presently under review by the Commissioner of Education whose final ruling is expected by January 15. In the meantime, ELC's understanding is that the SDA districts are now in the process of updating their LRFPs. After receiving these plans, the NJDOE has 90 days to review them and give final approval.

60 PARK PLACE • SUITE 300 • NEWARK, NEW JERSEY • 07102

PHONE: 973.624.1815 • FAX: 973.624.7339 • TTY: 973.624.4618 • WWW.EDLAWCENTER.ORG

81X

But the Department's responsibilities do not end there. By law, the NJDOE must conduct, and periodically update, an assessment based on each SDA district's needs and must provide an educational priority ranking of all district projects around the state. That critical information must be submitted to the SDA, along with the estimated cost associated with the projects.

The NJDOE last carried out a needs assessment and priority ranking of the SDA districts and their projects in 2013. While that assessment and priority ranking must be updated when all updated LRFPs are complete, the information contained in NJDOE's 2013 report, along with the existing LRFPs, should be sufficient for the SDA to prepare a capital plan that will provide legislators with a very close approximation of the facilities needs in the 31 SDA districts and the cost of meeting those needs.

Under the current Administration, several projects approved for the renovation or reconstruction of facilities in advanced states of disrepair were taken off the list of priority projects. We have no doubt those projects will appear again on the districts' LRFPs. Examples of projects included in the SDA's 2008 capital plan to receive funds authorized by the July 2008 legislation that have been left off the current capital plan are Early Childhood Centers in Burlington City, Jersey City, Pleasantville and Trenton, and other schools such as West Side High School in Newark and John Fenwick Elementary School in Salem City. Also on the LRFPs will be schools that have not yet made it onto a capital plan.

Notably, while the SDA has 110 major school facilities projects listed on its March 2011 statewide strategic plan, its total capital project portfolio consists of only 39 projects. The SDA has told advocates that it is unlikely to be able to add new schools to its capital project list without additional funding.

As legislators begin the process of understanding the resource needs of the SDA, we want to remind you that the NJ Supreme Court, in its 2002 Lonegan opinion, 174 N.J. 435 (2002), specifically ruled that bonding for school construction is exempt from voter approval. The Court declined to strike down the contract debt provisions of the Educational Facilities Construction and Financing Act (EFCFA) because of the Legislature's reliance on prior case law, including *Abbott V*, in enacting EFCFA and, "for the separate and distinct reason that EFCFA was enacted by the Legislature in furtherance of the mandate found in Article VIII, Section IV, paragraph 1 (the Education Provision) of the New Jersey Constitution." In fact, in the prior two bonding cycles for school construction, the Legislature approved bonding authority without recourse to a referendum. This includes the most recent cycle in 2008.

One additional comment about SDA operations: it is our view that significant savings in time and costs could be achieved if the agency would delegate to SDA districts certain functions – notably land acquisition and building planning and design – which can be more effectively and efficiently performed locally. This step would make it possible for school districts to construct or renovate facilities in accordance with their specific needs.

At the same, SDA overhead could be greatly reduced, since agency staffers would no longer be required to engage in time-consuming and inefficient oversight.

Finally, we direct your attention to the provision of EFCFA that authorizes the Commissioner, with legislative approval, to award 100% State support for facilities projects in non-SDA districts that are included in district factor group A or B, when such district "is having difficulty financing the local share," N.J.S.A. 18A:7G-5(k). We would urge the Legislature to grant approval for particular projects under those circumstances, including the much-needed project(s) that will be testified to by the Freehold Borough Superintendent here today.

Thank you again for the opportunity to bring these important aspects of the school construction program to your attention. New Jersey should be proud of a program that has improved school conditions for many students and thereby aided in their pursuit of school success. But there is much more to be done. Education Law Center stands ready to assist in this urgently needed program.



**Testimony provided by
Healthy Schools Now before the
Joint Committee on Public Schools
Wednesday, December 17th, 2014**

Thank you to chairmen of the committee and Amy for bringing the committee together to discuss an issue that impacts the children of this state and hundreds of thousands of educators as well. It is an issue that touches at the heart and soul of this state - the facilities that we provide to our children to learn - to become college and career ready, to develop their love of learning, to foster their curiosity, to nurture their self esteem and confidence. These facilities need to provide our children and the professionals dedicated to their education with safe, healthy and modern schools- which is what the statewide coalition of Healthy Schools Now is all about. We are a broad and diverse coalition with over 20 member groups that works from the state house to the local communities to ensure our schools are all that our children deserve.

We want to start today with our appreciation for our dialogues with the SDA since Charlie McKenna has become the CEO. Since our first meeting at the beginning of this year, Charlie (as he insists we call him) has had an open door for Healthy Schools Now, coalition partners and the communities where we work. Over the course of the past year we have had frank, sometimes contentious, but always productive conversations with Charlie. He has responded to many of our requests including holding community meetings and SDA Board meetings in locations around the state to facilitate community engagement and knowledge. Under his leadership we have received prompt answers to our questions and responses to our recommendations and requests. He has expressed both empathy and a sense of the urgency regarding the challenges facing our schools across the state.

We are all in agreement that the needs of the schools under the SDA are greater than we can attend to in the short term. While there are many projects in the ground, and others to start, there are simply too many needs to be addressed with the bandwidth and funding of the SDA. So part of what Healthy Schools Now would like to raise today, and ask for the collaboration with the SDA and this committee, is evaluating both the overall needs of our schools and the organizational structure that will permit progress to be made at a better pace. In our last meeting with Charlie he spoke about a more comprehensive needs assessment. With that we would ask that we look carefully at how we can improve process and structure to advance projects more efficiently.

84X

Part of this discussion has to include ongoing funding for the SDA. As testimony today indicates, the current bonding authority of the SDA largely is committed to projects and what is left is insufficient to address overall needs - for either emergent or capital projects. If the SDA anticipates using up the current bonding authority in the next 3 to 5 years, the time to begin discussing additional funding is now. Otherwise, if we wait until the money is gone, we could face years of no construction, not even money for emergent repairs, while we secure additional bonding authority. Healthy Schools Now is committed to working with you, the Legislature, and the SDA to ensure a continuity in funding. Along with our work on current school projects and needs, we begin today the call for the Legislature to consider funding moving forward.

The coalition members of Healthy Schools Now brings the opportunity to form true collaboration between government and the people it serves. The coalition itself has brought together many partners that you might not find sitting together most of the time. But we share a common goal of ensuring that all school children are given the schools they need and deserve to succeed. The coalition has worked together with community groups, school boards, local elected officials, local union offices, state level government officials in pursuit of this goal. We look forward to building upon this strong foundation to see the work grow and develop the necessary public support for new funding moving forward.



180 West State Street
Post Office Box 1211
Trenton, NJ 08607-1211
Phone 609-599-4561
njea.org

Sean M. Spiller
NJEA Secretary-Treasurer
Joint Committee on Public Schools
Wednesday, December 17, 2014

Thank you Mr. Chairman and members of the Committee for your time and commitment to this issue.

As a partner in the Healthy Schools Now Coalition, NJEA echoes their optimism for the cooperation and accessibility of the SDA under the leadership of Mr. McKenna. I think it is fair to say that during this past year, the SDA has been more responsive and open to keeping education and community partners involved in their work.

Let me do something quite unusual here and quote Governor Christie who just recently said in Camden when referring to students--

"What's holding them back is the building itself-----not the quality of the teachers, and not the effort of the students and not the effort of their parents."

NJEA's ultimate goal in all of this is a partnership, at the local level, between parents, other community leaders, educators and the state.

This past year has brought a renewed effort by the state towards partnerships---perhaps inspired by Trenton's efforts with their high school.

I had the opportunity to tour Trenton Central High School, as I'm sure some of you did as well. To see yellow police tape strewn across the hallways to keep children away from dangerous areas was an experience I will never forget. What makes it even more frustrating is that it is a fixable problem – and one that we must fix in order to show those students that we respect them and their desire to attain a quality education.

It shouldn't be necessary for NJEA and parents to have to "pound on the doors of government" in order for action to take place. But we will always stand with those who are working to ensure that government prioritizes the needs of its most vulnerable citizens. To that end, we are pleased that work in Trenton is proceeding.

86X

NJEA is also monitoring closely sites where we have seen very little movement, unfortunately--- Paterson Eastside High School and School 20 as well as Ferris High School in Jersey City and Vineland High School just to name a few. We also continue to monitor, and happily, see progress in Cleveland School in Orange and Gloucester City Middle School---schools where the conditions were appalling.

Therefore, on behalf of the other NJEA officers and our over 200,000 members who have paid a lot of attention to this issue, I would like to commend the SDA for its commitment to Camden High School as well as the work it has done in other places, including in the regular operating districts. However, there are schools where we must do more. Camden is one, which has been long overdue, and had the Department of Education updated its facilities plan, perhaps it could have been done sooner.

Which leads me to something I would urge this committee to do---- and that is to stay vigilant with the department to update their facilities plan for the hundreds of schools in the SDA districts.

We still have far too many students going to school every day in outdated facilities, with water problems, mold issues, and in dire need of technology upgrades in order to comply with the PARCC.

It would only seem logical that the department would make sure every student has access to the most updated technology BEFORE mandating tests that call for using it.

Finally, we are a state in need of infrastructure repairs---our roads, our bridges, our tunnels our rails---all in order to keep the economy moving.

However, our economy cannot be strong if we do not educate our children properly and in proper facilities.

Yes, it is expensive, but the longer we wait... The longer you wait; the more costs continue to rise. We must make sure that funds are released speedily and then replenished just as quickly because our children deserve that respect.

Thank you for your time.

87X