

752 974.905

044.4

C.1

DEPARTMENT OF HUMAN SERVICES

INTER-OFFICE COMMUNICATION

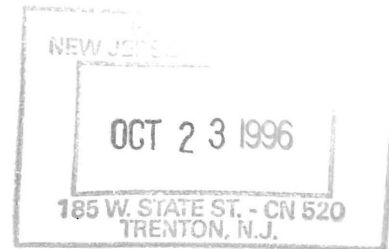
DATE October 15, 1996

TO William Waldman
Commissioner

FROM Karen Highsmith
Acting Director

K. Highsmith

SUBJECT CURRENT PROGRAM STATISTICS



Attached please find CURRENT PROGRAM STATISTICS, including the FDP Statistical Summary for August 1996. Also included are explanatory notes for the various data elements.

Should you have any questions, please feel free to call me.

KH:kas:c

Attachments

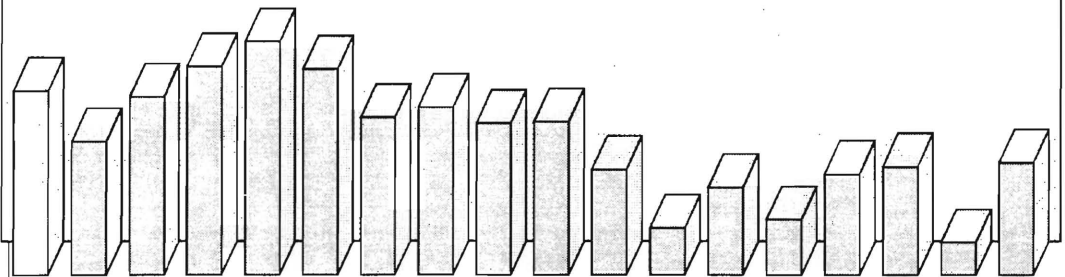
c Guhl
Grant
Tencza

*State of New Jersey
Department of Human Services
Division of Family Development*

CURRENT PROGRAM STATISTICS

August 1996

Karen Highsmith, Acting Director



State of New Jersey
Department of Human Services
Division of Family Development

CURRENT PROGRAM STATISTICS
August 1996

TABLE OF CONTENTS

	Page
Highlights of Current Program Statistics	1-3
Statistics by County, August 1996	
Table 1 AFDC	4
Graph 1 Current AFDC Families.....	5
Table 2 Food Stamp Program.....	6
Graph 2 Current Food Stamp Households/Persons	7
Table 3 AFDC/SSI Emergency Assistance Program	8
Graph 3 Current AFDC Families Receiving Emergency Assistance.....	9
Table 4 Family Development Program.....	10
State Summary, 1994 - 1996	
Table 5 AFDC, August 1994 - August 1996.....	12
Graph 4 Families Receiving AFDC, 8/94 - 8/96	12
Table 6 Food Stamp Program, August 1994 - August 1996	13
Graph 5 Food Stamp Households, 8/94 - 8/96	14
Graph 6 Food Stamp Recipients, 8/94 - 8/96.....	15
Table 7 AFDC Emergency Assistance Program, August 1994 - August 1996.....	16
Graph 7 AFDC Families Receiving Emergency Assistance, 8/94 - 8/96	17
Table 8 JOBS/FDP Participation Rates, by County and Statewide, August 1994 - August 1996.....	18
Graph 8 JOBS/FDP Participation Rates, 8/94 - 8/96	18-19
Table 9 General Assistance, and GA Emergency Assistance, May 1994 - May 1996	20
Graph 9 General Assistance Recipients, 5/94-5/96	21
Table 10 Child Support and Paternity, Fiscal Years 1994-1996	22
Explanatory Notes.....	23-24
Supplement	
Table 11 General Assistance Recipients and EA Payments by County and Municipality, May 1996	25

Highlights of Current Program Statistics

AFDC (Tables 1 and 5, Graphs 1 and 4)

110,000 eligible families in New Jersey were receiving AFDC as of the end of August 1996:

- less than **100,000** single head of household families (Regular AFDC, C segment).
- Among two-parent families, over **2600** Unemployed Parent families (F Segment) and **3000** State AFDC families (N Segment).
- less than **5100** Medicaid Only families.
- The largest numbers of families by county: Essex with **28,200**, Hudson with **17,700**, and Camden County with **12,700**. (53.1 percent of all AFDC families)
- Other counties ranged from under **200** families in Hunterdon to **7200** in Passaic County.

There were about 1800 fewer eligible families in August 1996 than in July 1996, with a total decline of more than 13,000 over the past two years since the August 1994 level of 123,500.

- Eligible C segment families in August 1996 were about **1400** fewer than in July 1996 and more than **11,000** below the August 1994 level of **111,000**.
- F segment families declined from about **4100** in August 1994 to about **3200** by October 1995, with a further decline to **2600** by August 1996.
- State AFDC (N segment) was about **3400** in August 1994 and slowly declined to less than **3000** by August 1996.
- Medicaid Only families remained at or below **5000** in 1994, but averaged nearly **5200** for 1995. For the first seven months of 1996 they have averaged close to **5100**.

FOOD STAMP PROGRAM (Tables 2 and 6, Graphs 2, 5, and 6)

At the end of August 1996, about 216,000 households were participating in the Food Stamp Program:

- **105,000** AFDC households with **328,000** persons
- **111,000** Other Low Income households with **169,000** persons
- A total of less than **502,000** persons, including almost **239,000** adults and almost **259,000** children
- **48.7 percent** of the households were in Essex (**54,000**), Hudson (**30,000**) and Camden (**21,000**) Counties.
- In August, the number of adults exceeded the number of children in Food Stamp households in **eight** counties (Bergen, Hunterdon, Middlesex, Monmouth, Morris, Somerset, Sussex, and Warren).

Food Stamp households in New Jersey remained in the 220,000 to 223,000 range from August 1994 through June 1996 except for a peak in March 1995 of almost 225,000. At 216,000 total Food Stamp households, August 1996 is the third consecutive month with a large decline.

- The number of Other Low Income households has exceeded the number of AFDC(FS) households since November 1995, with a difference of nearly **7000** in August 1996. The number of Other Low Income households receiving Food Stamps rose from about **106,000** in August 1994 to almost **114,500** in May 1996, but there was a decline of about **3000** over the following three months. AFDC(FS) households declined from nearly **115,000** in August 1994, to less than **105,000** in August 1996, but almost **4000** of that decline occurred since May of 1996.
- After a peak of **529,000** in March 1995, the number of Total Recipients has been moving downward. With the steepest decline in the last three months, the August 1996 level of less than **498,000** was almost **16,000** below just three months earlier.
- The number of Recipient Adults averaged about **246,000** for 1994 through the first five months of 1996. From May through August the number declined from about **247,000** to **239,000**.
- Over the last two years the number of Recipient Children declined by almost **21,000** from a high of more than **279,000**, in March 1995 to less than **259,000** in August 1996, about 7.5 percent.

EMERGENCY ASSISTANCE (Tables 3, 7 and 9, Graphs 3, 7 and 9)

In August 1996, 4845 eligible AFDC families and 443 SSI recipients received Emergency Assistance (EA) payments in New Jersey. For AFDC families this included:

- **1716** families with Temporary Rental Assistance (TRA)
- **346** motel placements and **339** emergency shelter placements
- All other AFDC-EA accounted for **2444** families, including back rent, back utilities, security deposits, furnishings, clothing and food allowance, or transitional housing.
- **1248** AFDC families in Essex County received EA, with **664** in Middlesex, **577** in Passaic, and **453** in Bergen. All other counties had between **5** and **355**, with ten counties **under 100**.

In the past two years, the average number of AFDC families receiving EA payments was 7300 in 1994, 5800 in 1995, and 4900 for the first eight months of 1996.

- The number of AFDC families provided TRA each month has declined steadily from an average of **3200** in 1994 to **1800** for the first eight months of 1996.
- Emergency Shelter has been provided to an average of **under 400** AFDC families for 1994 through the first eight months of 1996.
- Motel Housing declined from an average of close to **500** in 1994 to about **300** for the first eight months of 1996.
- An average of **3300** families received Other EA in 1994, **2800** in 1995, and almost **2500** for the first eight months of 1996.

The average number GA EA recipients was 7800 for 1994, 7400 for 1995, and 7300 for the first five months of 1996. TRA payments were made to an average of 4700 recipients in 1994 and an average of 4400 from 1995 through the first five months of 1996.

JOBS/FDP PARTICIPATION RATES (Table 8, Graph 8)

The Statewide JOBS/FDP participation rate of **25.1 percent** in August 1996 is the third consecutive month of decrease since May, a similar pattern to the summer of 1995. The rate is **2.5 percentage points** above August 1995 and approaching nine points above two years ago when the rate was only **16.3 percent**. A clear upward shift has been evident over the past two years.

- While most counties have shown upward movement in participation rates in the past two years, recent declines have eroded earlier gains in some counties. With some fluctuations, Cape May, Essex, Gloucester, Middlesex, Monmouth, Ocean, and Passaic have shown upward movement. Bergen, Burlington, Camden, Hudson, Union, Mercer and Salem have either increased little or had recent declines which erased earlier gains. Cumberland has maintained high participation rates, as have Atlantic, Somerset, Sussex, and Warren which have also had wide fluctuations. Hunterdon jumped to higher levels during 1995, while Morris increased markedly in 1995 and remains at record levels (over 90 percent).
- For August 1996 County rates were distributed as follows:
 - 16 to 20 percent** -- Camden and Essex, Hudson and Ocean
 - 20 to 30 percent** -- Bergen, Burlington, Cape May, Gloucester, Hunterdon, Mercer, Monmouth, Salem and Union
 - 30 to 40 percent** --Middlesex, and Passaic
 - 40 to 60 percent** -- Atlantic, Cumberland, Somerset, Sussex and Warren
 - over 90 percent** --Morris
- From July to August 1996, participation rates decreased in sixteen of the State's 21 counties.

GENERAL ASSISTANCE (Table 9, Graph 9)

Over the last two years (from May 1994 through May 1996, the latest available) the number of GA recipients was highest at **38,100** in the beginning of the period. The level held around **35,000** from September 1994 through April 1995, dropped to a low of **32,000** by September 1995, returned to almost **35,000** by March 1996, and declined by about **1000** since then.

- The number of employable recipients was over **25,000** May 1994, then reached a low of **21,000** in July 1995. By March 1996 the level had increased to over **23,500**, then declined somewhat in April and May.
- The number of Unemployable GA recipients remained close to **12,000** from May 1994 through June 1995. From July 1995 through January 1996 Unemployable GA recipients declined to about **10,000**, then returned to around **11,000** for February through May 1996.

CHILD SUPPORT AND PATERNITY COLLECTIONS (Table 10)

Total collections of the Child Support and Paternity Program declined by **2.2 percent**, from **\$574 million** in SFY 1995 to **\$561 million** in SFY 1996.

- AFDC/Foster Care collections remained nearly unchanged at over **\$95 million**, with an increase of only **\$200 thousand** or **0.2 percent**. Non-AFDC collections dropped from **\$479 million** to **\$466 million**, a decline of **2.7 percent**.
- Total Federal tax and UIB collections each increased by **\$6 million**, which were more than offset by a decline of **\$27 million** decline (**15 percent**) in the Other/Own Behalf category.

New Jersey Department of Human Services
Division of Family Development

TABLE 1
AFDC Program

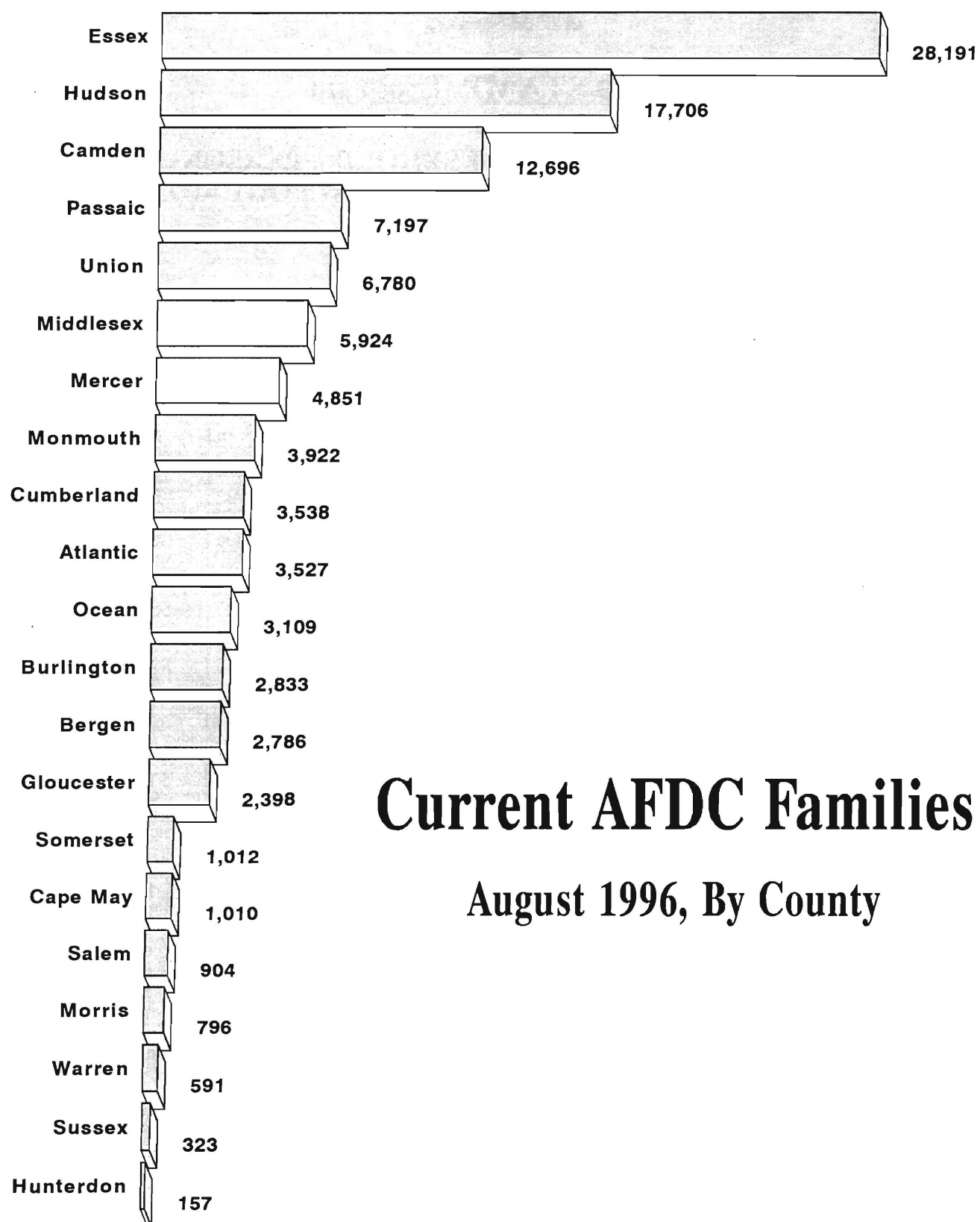
**NUMBER OF APPLICATIONS AND TERMINATIONS DURING REPORT MONTH, AND
NUMBER OF ELIGIBLE FAMILIES RECEIVING AFDC AT END OF REPORT MONTH**

August 1996

County	Applications Approved	Terminations	Regular AFDC (C Segment)	Unemployed Parents (F)	State AFDC (N)	Medicaid Only	TOTAL AFDC
Atlantic	209	386	3,253	92	64	118	3,527
Bergen	116	155	2,478	118	119	71	2,786
Burlington	187	270	2,489	62	69	213	2,833
Camden	644	734	11,185	448	382	681	12,696
Cape May	53	128	838	31	62	79	1,010
Cumberland	257	361	3,029	144	172	193	3,538
Essex	781	1,075	26,824	403	213	751	28,191
Gloucester	192	274	2,087	85	67	159	2,398
Hudson	503	633	15,859	303	624	920	17,706
Hunterdon	21	26	123	3	4	27	157
Mercer	422	502	4,320	85	105	341	4,851
Middlesex	313	473	4,945	221	266	492	5,924
Monmouth	206	276	3,642	69	149	62	3,922
Morris	51	63	721	22	20	33	796
Ocean	199	330	2,649	116	137	207	3,109
Passaic	312	404	6,635	249	247	66	7,197
Salem	72	100	799	14	33	58	904
Somerset	114	133	826	35	35	116	1,012
Sussex	36	45	274	6	2	41	323
Union	286	381	6,099	107	185	389	6,780
Warren	40	40	492	25	38	36	591
NJ TOTAL	5,014	6,789	99,567	2,638	2,993	5,053	110,251

Data Sources: Data is derived from NJ Division of Family Development's FAMIS report # FF-012.

GRAPH 1



Current AFDC Families

August 1996, By County

New Jersey Department of Human Services
Division of Family Development

TABLE 2

FOOD STAMP Program

NUMBER OF ATP'S ISSUED TO HOUSEHOLDS, PERSONS, ADULTS AND CHILDREN AT THE END OF THE REPORT MONTH

August 1996

County	HOUSEHOLDS			PERSONS				
	AFDC	Other low income	TOTAL	TOTAL	AFDC	Other low income	Adults	Children
Atlantic	3,307	4,536	7,843	16,936	10,723	6,213	8,391	8,545
Bergen	2,557	5,664	8,221	16,214	7,616	8,598	9,555	6,659
Burlington	2,596	2,827	5,423	12,377	7,884	4,493	6,074	6,303
Camden	12,203	8,830	21,033	52,597	39,764	12,833	23,580	29,017
Cape May	1,025	1,092	2,117	5,340	3,485	1,855	2,519	2,821
Cumberland	3,549	2,690	6,239	16,113	11,763	4,350	7,366	8,747
Essex	27,514	26,898	54,412	124,124	85,237	38,887	58,370	65,754
Gloucester	2,258	1,764	4,022	9,892	7,063	2,829	4,612	5,280
Hudson	16,638	13,145	29,783	71,146	50,854	20,292	32,516	38,630
Hunterdon	122	346	468	910	372	538	525	385
Mercer	4,444	4,471	8,915	19,444	13,617	5,827	9,235	10,209
Middlesex	5,394	5,955	11,349	25,106	16,127	8,979	12,567	12,539
Monmouth	3,822	6,152	9,974	21,394	12,100	9,294	11,082	10,312
Morris	691	1,859	2,550	4,938	2,027	2,911	2,938	2,000
Ocean	3,236	4,440	7,676	19,211	10,587	8,624	9,027	10,184
Passaic	6,801	9,593	16,394	38,025	22,390	15,635	18,401	19,624
Salem	875	765	1,640	4,057	2,824	1,233	1,856	2,201
Somerset	937	1,858	2,795	5,388	2,728	2,660	3,020	2,368
Sussex	292	633	925	2,036	861	1,175	1,096	940
Union	5,746	6,965	12,711	28,660	18,284	10,376	14,209	14,451
Warren	561	990	1,551	3,528	1,749	1,779	1,865	1,663
NJ TOTAL	104,568	111,473	216,041	497,436	328,055	169,381	238,804	258,632

ATP - Authorization to Participate, may include some duplication

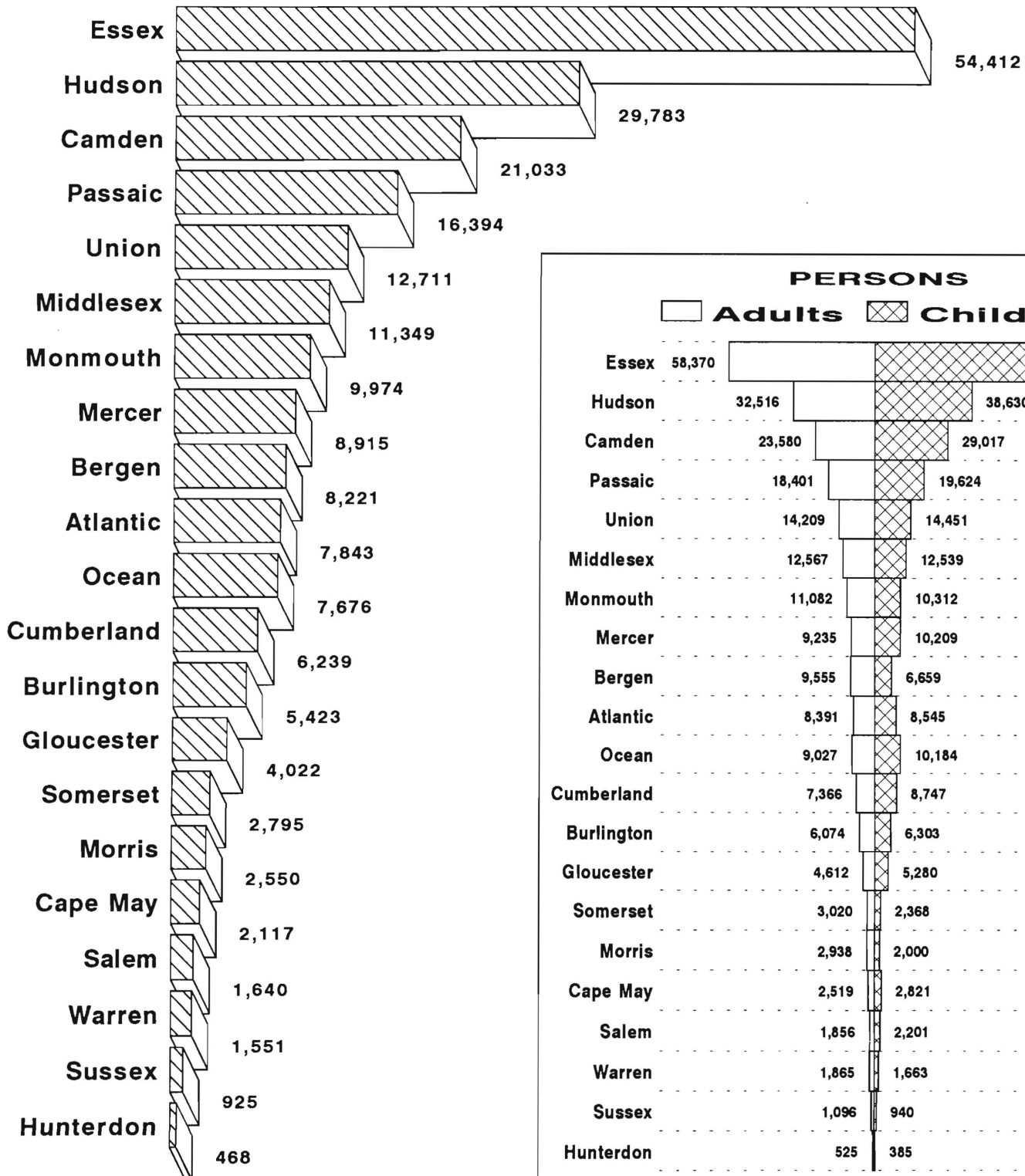
Data Sources: Data is derived from NJ Division of Family Development's FAMIS report # FB-160.

GRAPH 2

Food Stamp Households

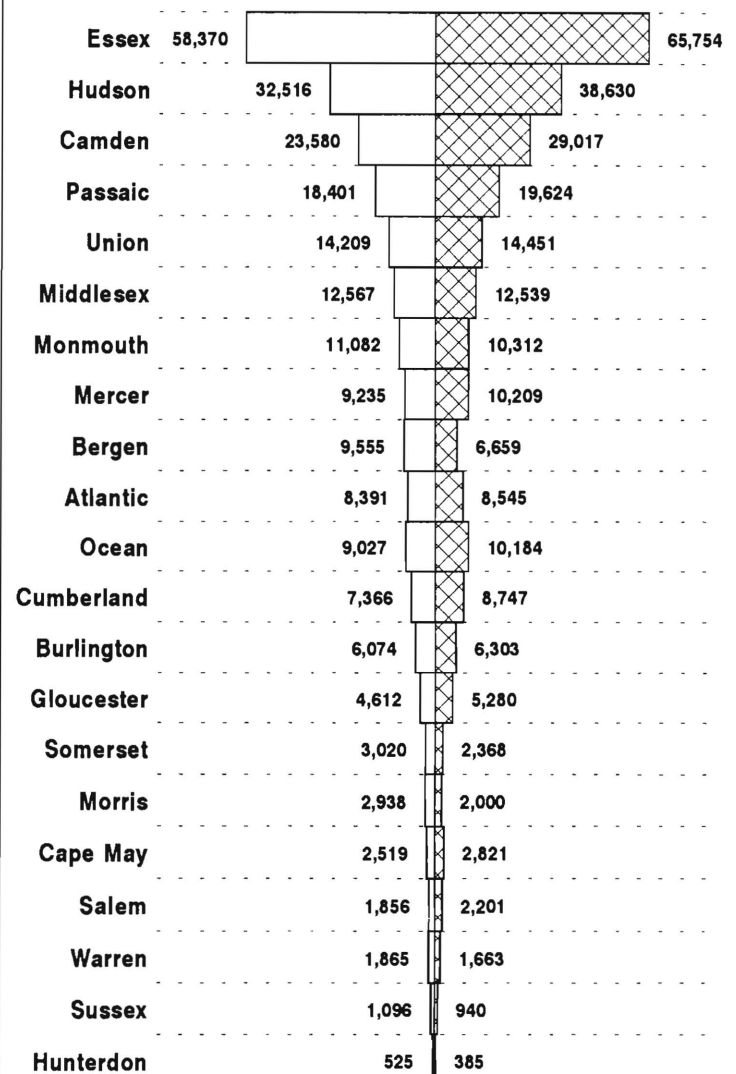
August 1996, By County

HOUSEHOLDS



PERSONS

Adults Children



New Jersey Department of Human Services
Division of Family Development

TABLE 3**AFDC/SSI EMERGENCY ASSISTANCE**

**NUMBER OF ELIGIBLE FAMILIES RECEIVING EMERGENCY ASSISTANCE PAYMENTS
(UNDUPLICATED CASES)**

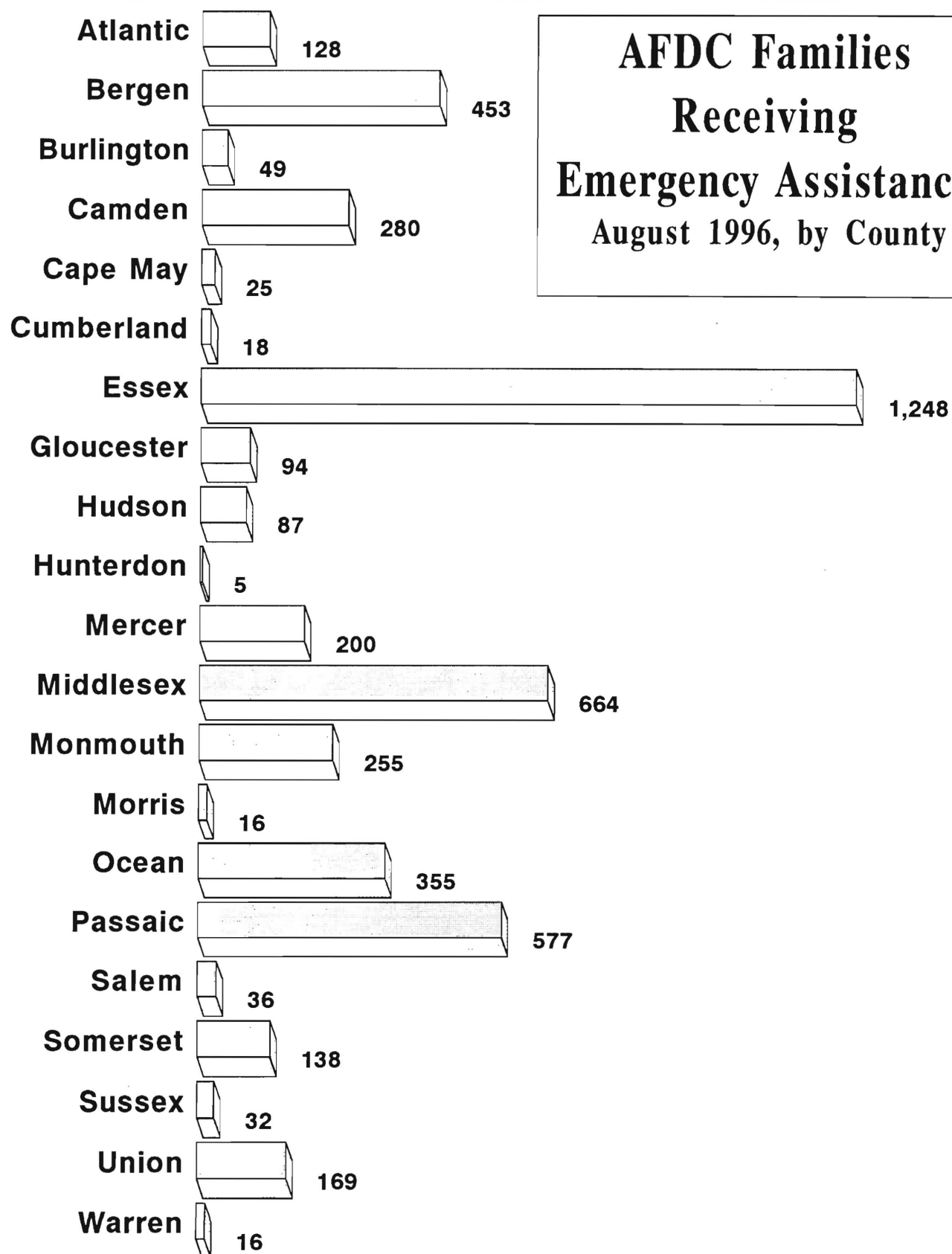
August 1996

County	AFDC Families Receiving Emergency Assistance					SSI Recipients Receiving EA
	TOTAL AFDC -EA	Temporary Rental Assist	Motel Housing	Emergency Shelter	Other AFDC-EA	
ATLANTIC	128	38	12	16	62	32
BERGEN	453	219	52	29	153	22
BURLINGTON	49	2	2	27	18	13
CAMDEN	280	79	5	32	164	30
CAPE MAY	25	5	2	0	18	7
CUMBERLAND	18	2	0	9	7	5
ESSEX	1,248	560	4	78	606	56
GLOUCESTER	94	44	1	23	26	3
HUDSON	87	13	4	19	51	5
HUNTERDON	5	1	1	2	1	2
MERCER	200	87	17	2	94	15
MIDDLESEX	664	372	12	12	268	46
MONMOUTH	255	124	51	1	79	21
MORRIS	16	0	0	6	10	8
OCEAN	355	112	136	4	103	85
PASSAIC	577	6	6	25	540	51
SALEM	36	15	7	0	14	1
SOMERSET	138	15	13	24	86	11
SUSSEX	32	1	8	10	13	9
UNION	169	21	4	17	127	17
WARREN	16	0	9	3	4	4
NJ TOTAL	4,845	1716	346	339	2,444	443

Data Sources: Derived from NJ Division of Family Development FAMIS Reports #FM 457 and #FM 430-03a.

GRAPH 3

**AFDC Families
Receiving
Emergency Assistance
August 1996, by County**



NEW JERSEY DEPARTMENT OF HUMAN SERVICES
DIVISION OF FAMILY DEVELOPMENT

TABLE 4
FAMILY DEVELOPMENT PROGRAM
STATISTICAL SUMMARY

COUNTY	SNAPSHOT OF ACTIVITY AS OF AUGUST 1996				ACTIVITY FOR MONTH OF AUGUST 1996					
	TOTAL NONEXMT JOBS/FDP RECI- PIENTS	EMPLOYMENT DIRECTED ACTIVITIES(1)			PARTIC IN EDAs & RECEIVE SUPPORT SERVICES		PARTIC W/ 1st C M INTV	# EMPL THIS MONTH & STILL REC AFDC	# CLSD ON FAMIS RE: EARNINGS (2)	POST AFDC & REC CHILD CARE
		TRAIN- ING	EDUCA- TION	JOB SEARCH						
					TREs	CHILD CARE				
ATLANTIC	1,176	241	87	92	175	193	146	64	108	192
BERGEN	1,777	205	103	35	189	119	46	16	47	78
BURLINGTON	1,363	212	61	48	237	156	108	48	83	182
CAMDEN	8,849	641	313	235	581	348	428	63	153	235
CAPE MAY	469	40	9	68	28	15	58	45	72	9
CUMBERLAND	1,412	240	129	35	411	191	218	74	89	127
ESSEX	17,237	1,679	711	365	1,795	1,342	483	98	200	158
GLOUCESTER	1,017	261	96	53	393	126	83	14	48	70
HUDSON	11,107	944	712	160	1,386	694	260	53	210	250
HUNTERDON	83	8	9	7	2	8	11	5	9	6
MERCER	2,958	278	238	56	260	214	93	30	87	117
MIDDLESEX	3,292	211	217	374	379	181	239	100	92	132
MONMOUTH	2,475	319	231	116	429	303	105	63	105	177
MORRIS	361	192	24	47	56	97	43	13	21	54
OCEAN	1,721	190	49	86	85	99	113	46	83	185
PASSAIC	3,739	959	295	71	836	335	268	50	109	137
SALEM	355	37	66	10	53	42	12	7	21	44
SOMERSET	528	67	40	12	70	50	27	14	27	35
SUSSEX	167	46	32	28	29	32	14	14	11	27
UNION	3,753	349	224	161	379	217	43	24	84	113
WARREN	374	60	46	41	8	16	21	11	23	8
STATE	64,213	7,179	3,692	2,100	7,781	4,778	2,819	852	1,682	2,336

(1) - The number of participants receiving support services may occasionally exceed the number actively participating in EDAs. This can result from extended assessment or evaluation activities, or the issuance of bridge payments.

(2) - FAMIS file date: 8/23/96

New Jersey Department of Human Services
Division of Family Development

TABLE 5

AFDC Program State Summary

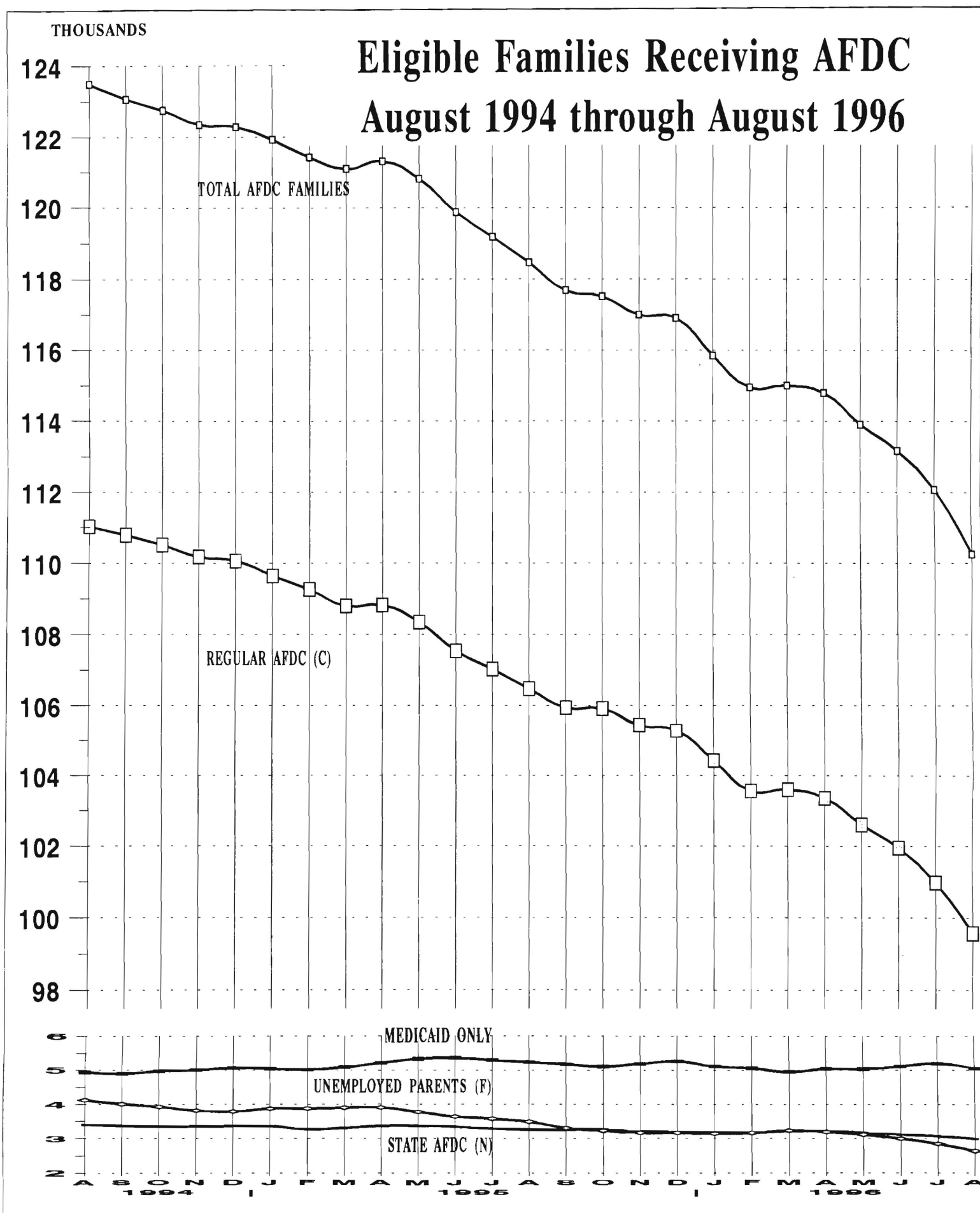
NUMBER OF APPLICATIONS AND TERMINATIONS DURING REPORT MONTH,
AND NUMBER OF ELIGIBLE FAMILIES RECEIVING AFDC AT END OF REPORT MONTH

August 1994 through August 1996

	Applications Approved	Termin- ations	Regular AFDC (C Segment)	Unemployed Parents (F)	State AFDC (N)	Medicaid Only	TOTAL AFDC
1994 Aug	6,435	6,827	111,025	4,128	3,401	4,940	123,494
Sep	6,266	6,754	110,790	4,007	3,369	4,900	123,066
Oct	6,592	6,950	110,517	3,927	3,340	4,966	122,750
Nov	6,344	6,796	110,181	3,814	3,350	5,002	122,347
Dec	5,682	5,890	110,070	3,789	3,360	5,065	122,284
AVERAGE (12 MONTHS)	6,014	6,150	110,901	4,195	3,351	4,928	123,375
1995 Jan	5,583	5,944	109,645	3,875	3,358	5,045	121,923
Feb	5,964	6,515	109,261	3,878	3,270	5,016	121,425
Mar	5,810	6,221	108,800	3,903	3,305	5,088	121,096
Apr	7,096	7,086	108,822	3,907	3,365	5,209	121,303
May	5,288	5,784	108,343	3,773	3,369	5,328	120,813
Jun	5,558	6,458	107,541	3,639	3,336	5,358	119,874
Jul	5,977	6,781	107,028	3,574	3,286	5,293	119,181
Aug	5,547	6,294	106,475	3,489	3,260	5,239	118,463
Sep	5,922	6,647	105,943	3,303	3,260	5,175	117,681
Oct	7,062	7,359	105,917	3,224	3,257	5,110	117,508
Nov	6,083	6,660	105,445	3,164	3,199	5,189	116,997
Dec	5,582	5,775	105,287	3,165	3,189	5,258	116,899
AVERAGE	5,956	6,460	107,376	3,575	3,288	5,192	119,430
1996 Jan	5,332	6,236	104,430	3,139	3,173	5,113	115,855
Feb	5,217	6,283	103,561	3,161	3,170	5,060	114,952
Mar	6,317	6,302	103,598	3,230	3,217	4,956	115,001
Apr	6,896	7,241	103,352	3,192	3,211	5,040	114,795
May	5,335	6,152	102,600	3,112	3,163	5,038	113,913
Jun	5,319	6,121	101,947	2,999	3,117	5,116	113,179
Jul	5,874	7,027	100,968	2,843	3,073	5,200	112,084
Aug	5,014	6,789	99,567	2,638	2,993	5,053	110,251
AVERAGE	5,663	6,519	102,503	3,039	3,140	5,072	113,754

Data Sources: Data is derived from NJ Division of Family Development's FAMIS report # FF-012.

GRAPH 4



New Jersey Department of Human Services
Division of Family Development

TABLE 6

FOOD STAMP Program State Summary

**NUMBER OF ATP'S ISSUED TO HOUSEHOLDS, PERSONS,
ADULTS AND CHILDREN AT THE END OF THE REPORT MONTH**

August 1994 through August 1996

	HOUSEHOLDS			TOTAL	PERSONS			
	AFDC	Other low income	TOTAL		AFDC	Other low income	Adults	Children
1994 Aug	114,809	106,115	220,924	524,659	361,106	163,553	246,052	278,607
Sep	114,177	105,972	220,149	521,945	358,849	163,096	244,835	277,110
Oct	114,039	106,903	220,942	522,406	358,010	164,396	245,676	276,730
Nov	114,251	107,577	221,828	524,090	358,582	165,508	246,659	277,431
Dec	114,232	107,467	221,699	523,825	358,446	165,379	246,517	277,308
AVERAGE (12 MONTHS)	114,789	105,924	220,714	525,325	361,323	164,003	246,043	279,282
1995 Jan	113,691	107,493	221,184	522,125	356,763	165,362	245,837	276,288
Feb	113,830	108,421	222,251	524,344	357,419	166,925	247,107	277,237
Mar	114,339	110,279	224,618	529,456	359,404	170,052	249,994	279,462
Apr	113,588	108,991	222,579	524,102	356,717	167,385	247,367	276,735
May	113,125	109,171	222,296	522,173	355,099	167,074	246,949	275,224
Jun	112,827	109,198	222,025	521,084	354,211	166,873	246,557	274,527
Jul	111,635	107,978	219,613	515,478	350,378	165,100	243,727	271,751
Aug	111,415	109,603	221,018	516,618	349,372	167,246	245,110	271,508
Sep	110,760	109,154	219,914	513,517	347,126	166,391	243,723	269,794
Oct	110,697	110,268	220,965	514,598	346,519	168,079	244,911	269,687
Nov	110,630	110,763	221,393	514,823	346,034	168,789	245,455	269,368
Dec	109,992	110,155	220,147	511,727	343,955	167,772	243,965	267,762
AVERAGE	112,211	109,290	221,500	519,170	351,916	167,254	245,892	273,279
1996 Jan	109,554	111,166	220,720	512,165	342,778	169,387	244,801	267,364
Feb	109,649	112,813	222,462	515,181	343,314	171,867	246,961	268,220
Mar	109,364	113,895	223,259	515,676	342,361	173,315	247,695	267,981
Apr	108,787	114,163	222,950	514,375	340,597	173,778	247,380	266,995
May	108,205	114,458	222,663	513,213	338,891	174,322	246,918	266,295
Jun	106,875	112,888	219,763	506,926	334,762	172,164	243,422	263,504
Jul	105,653	112,023	217,676	501,575	331,157	170,418	240,840	260,735
Aug	104,568	111,473	216,041	497,436	328,055	169,381	238,804	258,632
AVERAGE	107,832	112,860	220,692	509,568	337,739	171,829	244,603	264,966

ATP - Authorization to Participate

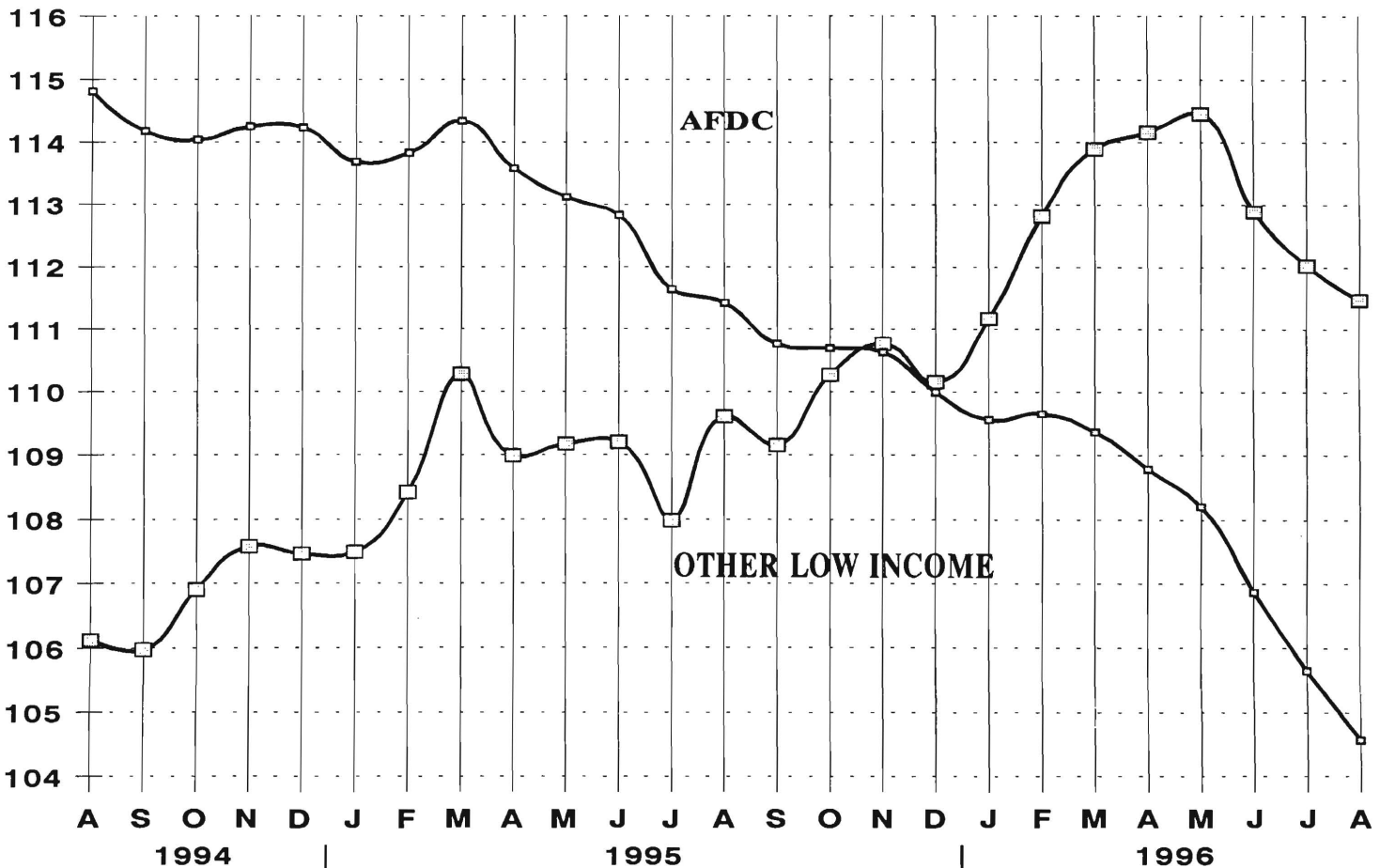
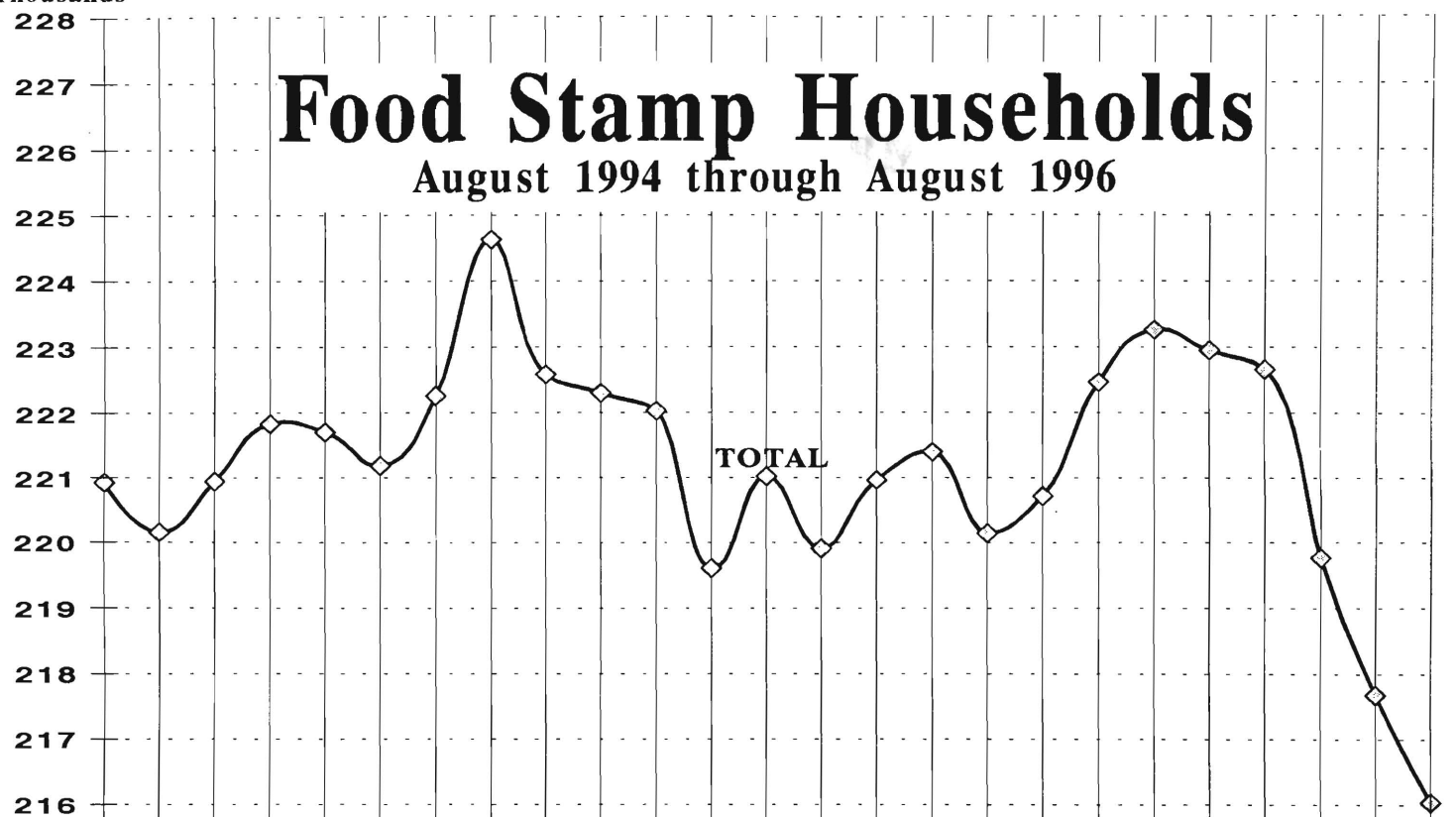
Data Sources: Data is derived from NJ Division of Family Development's FAMIS report # FB-160.

GRAPH 5

Thousands

Food Stamp Households

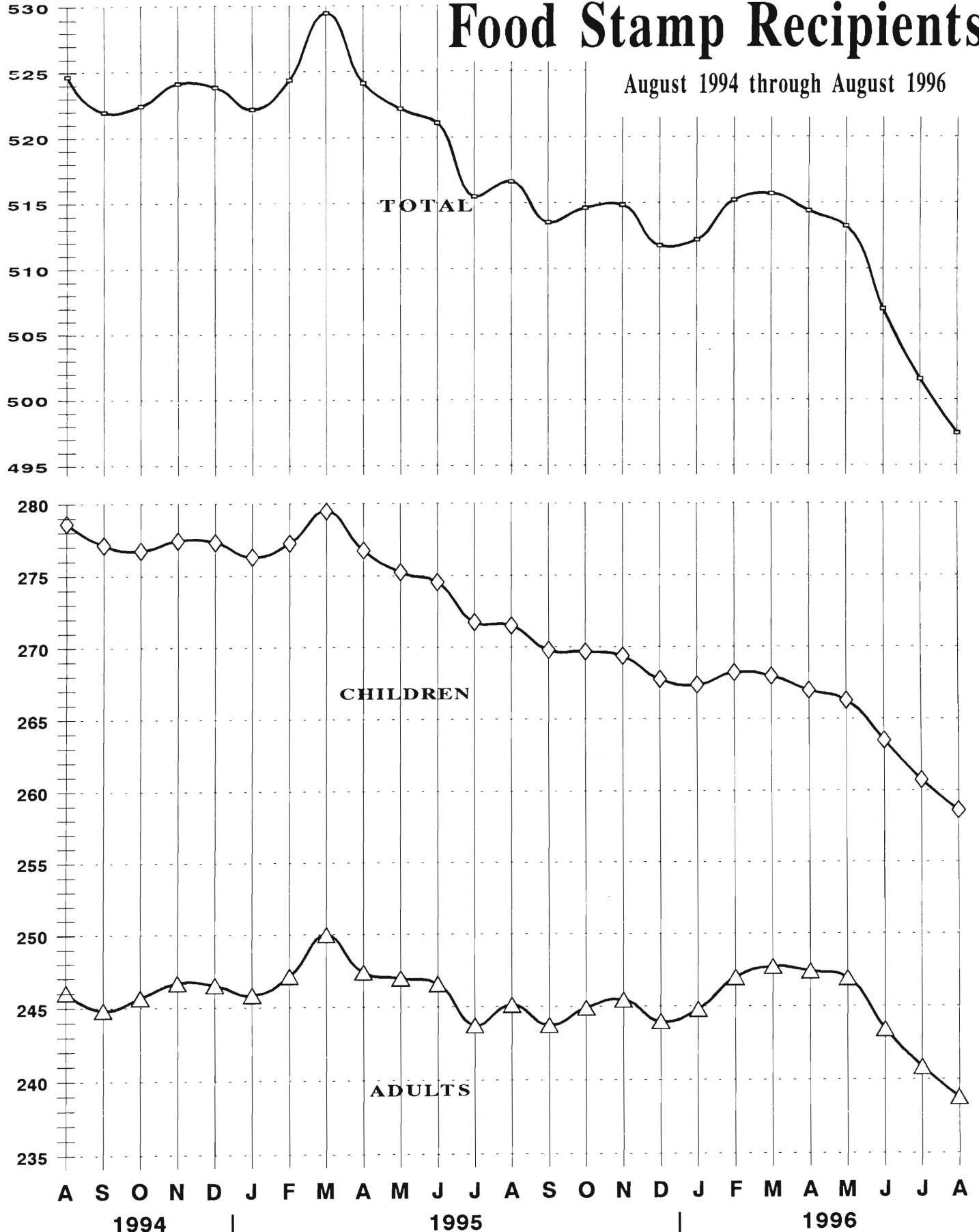
August 1994 through August 1996



Food Stamp Recipients

August 1994 through August 1996

Thousands



New Jersey Department of Human Services
Division of Family Development

TABLE 7

EMERGENCY ASSISTANCE Program for AFDC Recipients

State Summary

**NUMBER OF ELIGIBLE FAMILIES RECEIVING EMERGENCY ASSISTANCE PAYMENTS
(UNDUPLICATED CASES)
August 1994 through August 1996**

	Total families receiving EA	Temporary rental assist.	Motel Housing	Emergency Shelter	Other AFDC-EA
1994 AUG	7,840	3,204	520	426	3,690
SEP	7,545	3,147	418	430	3,550
OCT	7,147	2,759	442	366	3,580
NOV	7,231	2,720	604	391	3,516
DEC	6,540	2,658	554	379	2,949
Average (12 mos.)	7,326	3,218	468	379	3,260

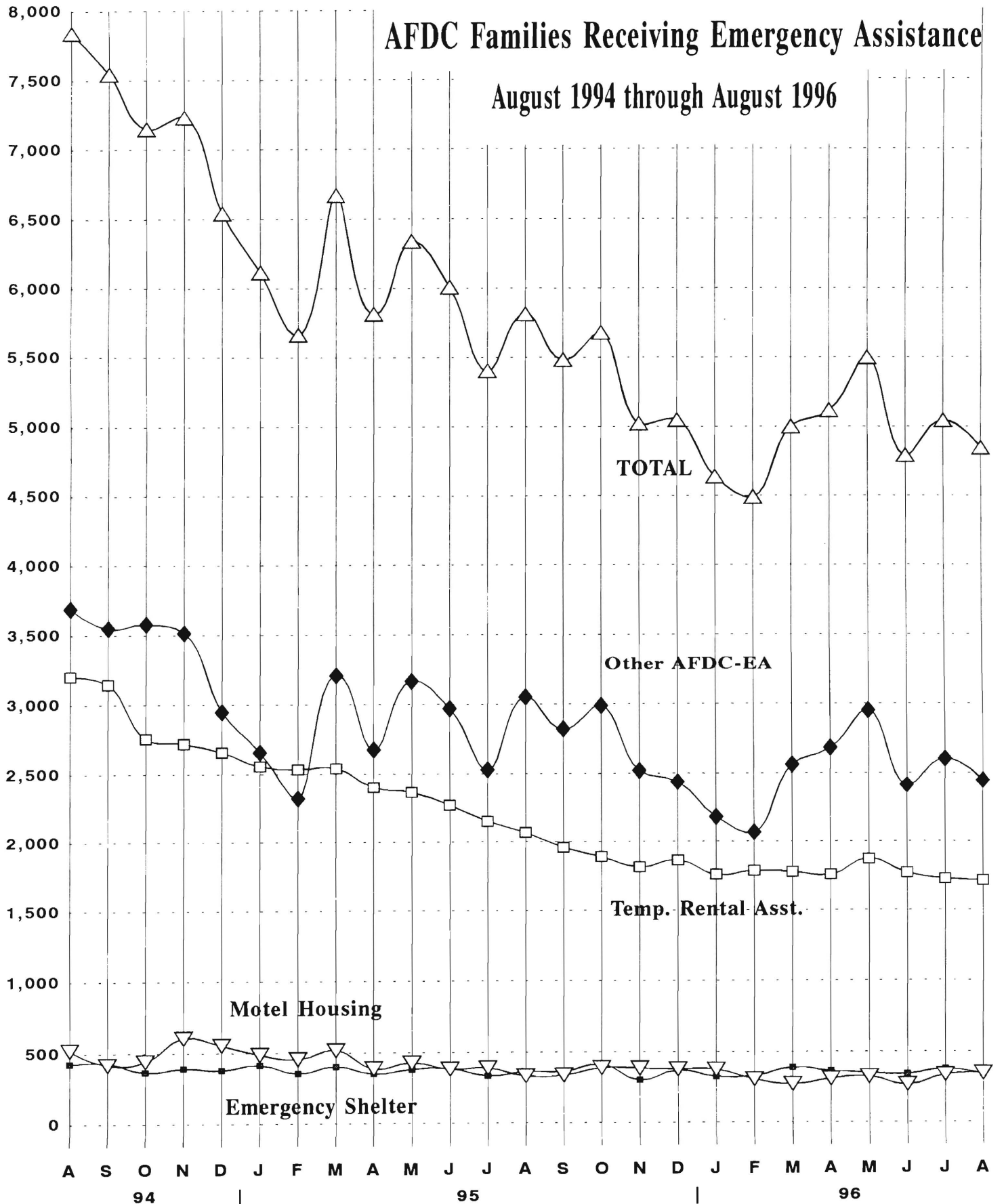
1995 JAN	6,115	2,557	487	413	2,658
FEB	5,664	2,535	456	354	2,319
MAR	6,668	2,542	516	402	3,208
APR	5,815	2,402	387	351	2,675
MAY	6,338	2,364	427	381	3,166
JUN	6,007	2,268	382	387	2,970
JUL	5,402	2,149	389	334	2,530
AUG	5,813	2,068	331	362	3,052
SEP	5,482	1,958	336	364	2,824
OCT	5,678	1,891	388	410	2,989
NOV	5,024	1,816	384	302	2,522
DEC	5,048	1,864	377	369	2,438
Average	5,755	2,201	405	369	2,779

1996 JAN	4,639	1,761	374	325	2,179
FEB	4,490	1,788	305	330	2,067
MAR	5,001	1,779	270	388	2,564
APR	5,118	1,760	309	364	2,685
MAY	5,498	1,873	323	350	2,952
JUN	4,791	1,772	266	341	2,412
JUL	5,044	1,729	335	377	2,603
AUG	4,845	1,716	346	339	2,444
Average	4,928	1,772	316	352	2,488

GRAPH 7

AFDC Families Receiving Emergency Assistance

August 1994 through August 1996

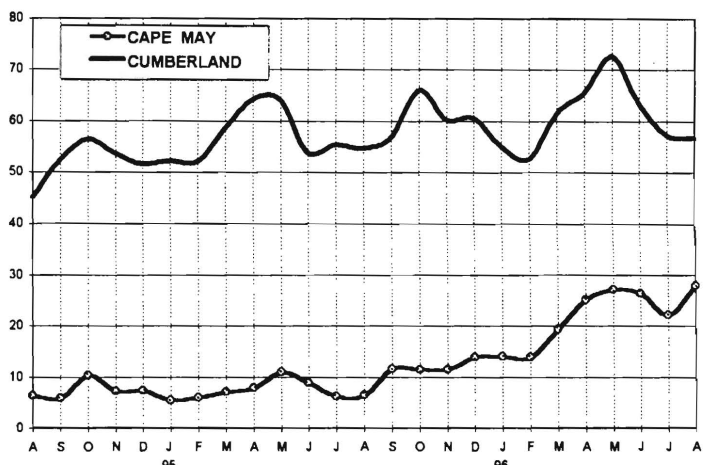
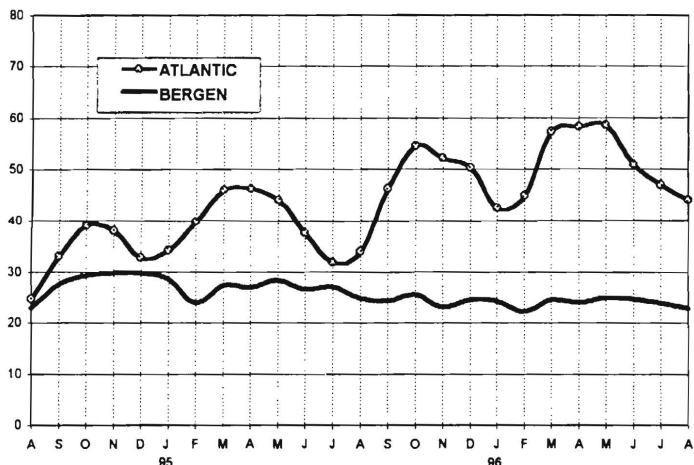
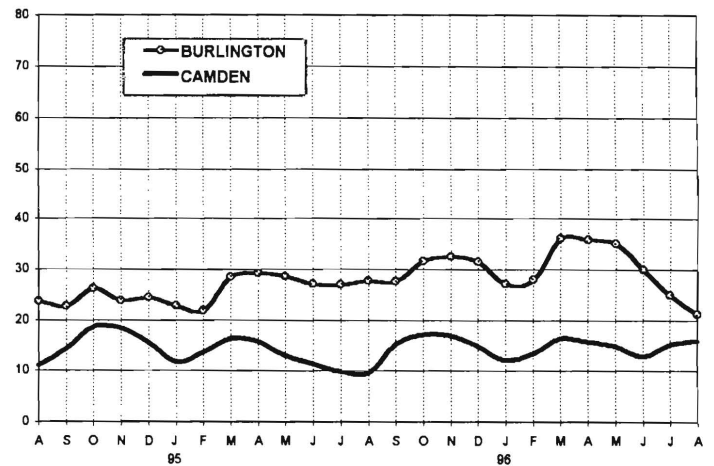
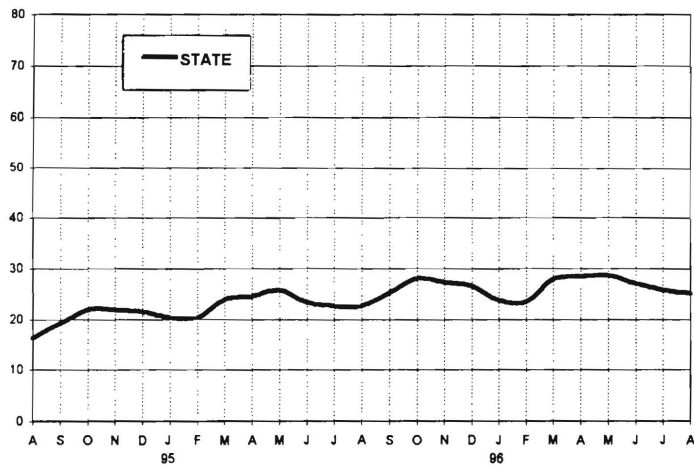


**New Jersey Department of Human Services
Division of Family Development**

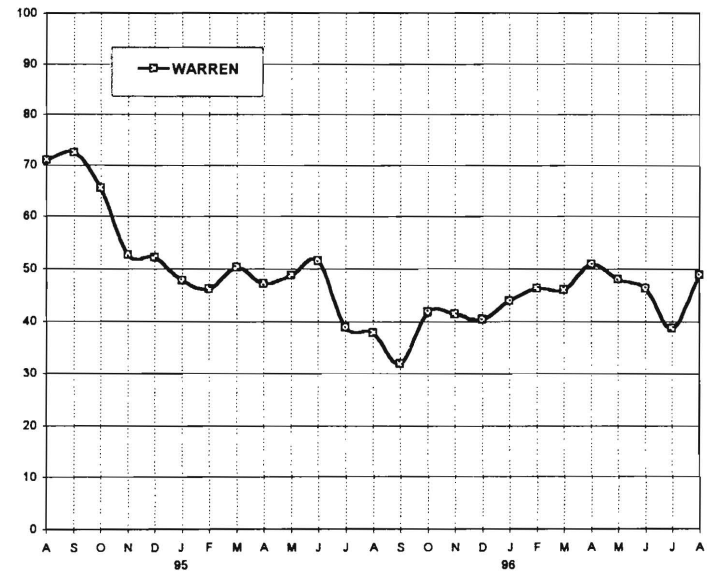
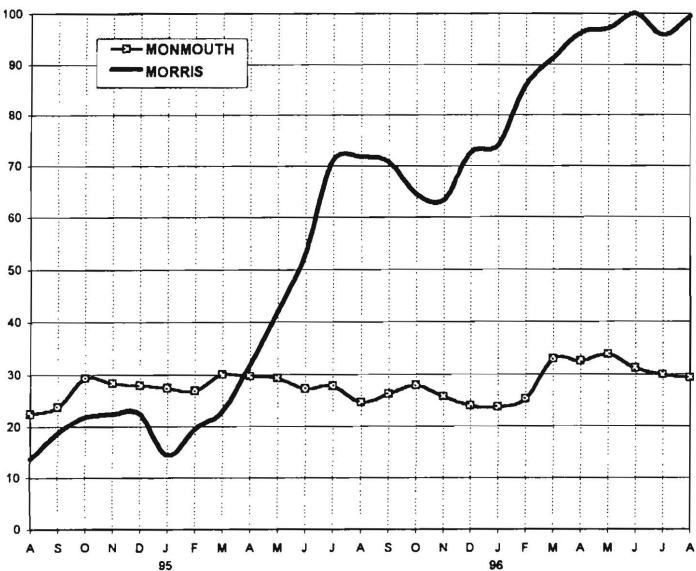
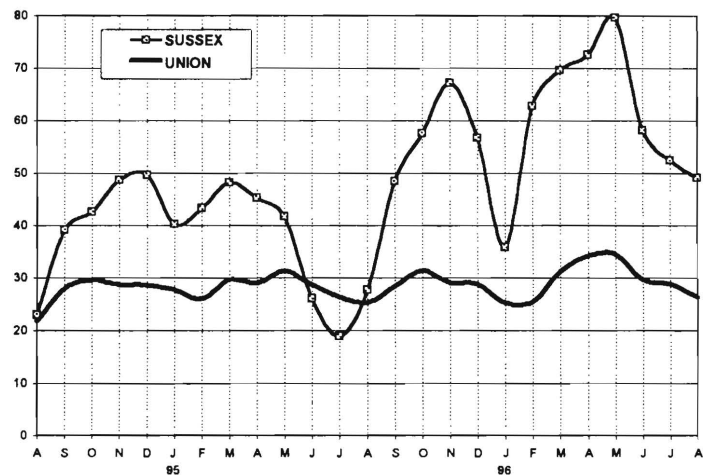
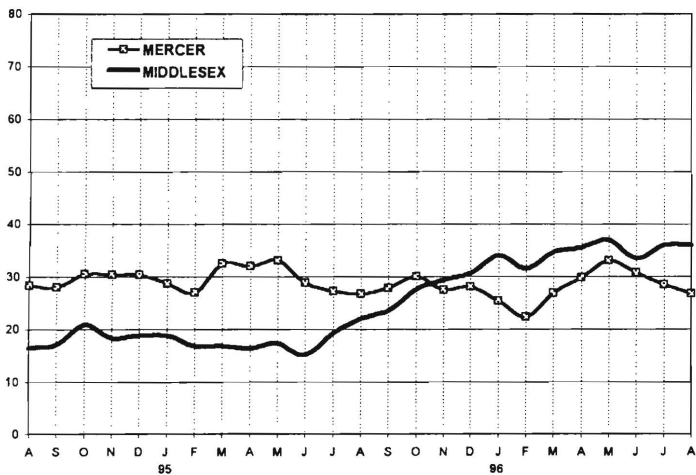
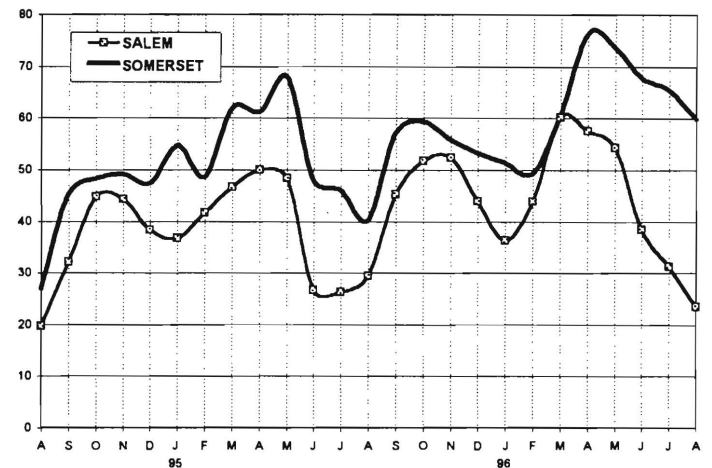
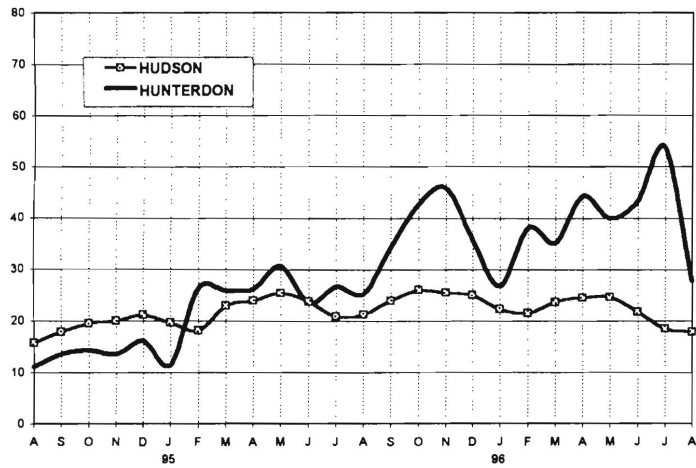
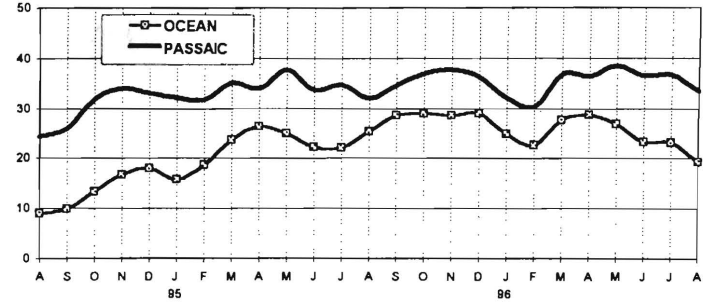
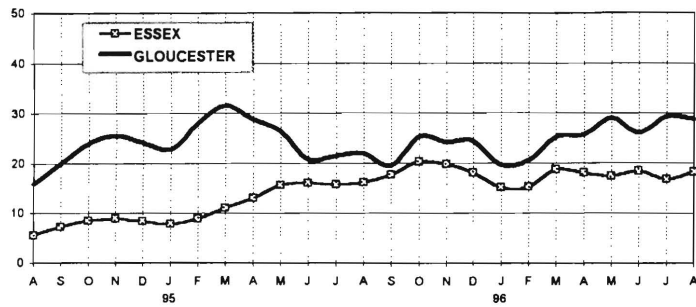
**TABLE 8
JOBS/FDP PARTICIPATION RATES BY MONTH
(PERCENT)**

	STATE	ATLANTIC	BERGEN	BURLINGTON	CAMDEN	CAPE MAY	CUMBERLAND	ESSEX	GLOUCESTER	HUDSON	HUNTERDON	MERCER	MIDDLESEX	MONMOUTH	MORRIS	OCEAN	PASSAIC	SALEM	SOMERSET	SUSSEX	UNION	WARREN
AUG	16.3	24.8	23.0	23.7	11.1	6.3	45.1	5.5	15.8	15.7	11.1	28.3	16.5	22.3	13.7	9.0	24.3	19.8	26.9	23.0	21.8	71.0
SEP	19.1	33.0	27.6	22.7	14.3	5.8	52.5	7.2	20.0	17.9	13.4	27.9	17.1	23.7	18.7	9.9	25.9	32.2	45.4	39.2	27.9	72.5
OCT	21.8	39.0	29.3	26.2	18.5	10.4	56.4	8.5	24.0	19.5	14.2	30.5	20.8	29.2	21.7	13.4	31.9	44.8	48.3	42.6	29.5	65.4
NOV	21.8	38.0	29.7	23.9	18.3	7.3	53.7	8.8	25.5	20.0	13.5	30.4	18.2	28.2	22.2	16.7	33.9	44.2	49.1	48.7	28.7	52.6
DEC	21.5	32.8	29.7	24.4	15.5	7.5	51.5	8.3	24.2	21.1	16.1	30.4	18.8	27.8	22.4	18.1	33.0	38.3	47.4	49.6	28.6	52.2
95 JAN	20.4	34.2	28.6	22.9	11.7	5.5	52.2	7.8	22.8	19.6	11.5	28.7	18.8	27.3	14.4	15.8	32.1	36.7	54.7	40.2	27.7	47.7
FEB	20.3	39.8	23.9	21.8	13.6	6.0	52.1	8.8	28.1	18.1	26.2	27.0	16.8	26.8	19.5	18.6	31.7	41.7	48.7	43.3	26.0	46.1
MAR	23.8	46.1	27.3	28.5	16.3	7.2	58.6	11.0	31.6	22.9	25.8	32.5	16.9	29.9	22.9	23.6	35.1	46.6	62.0	48.2	29.6	50.3
APR	24.5	46.3	26.9	29.2	15.7	7.9	64.1	13.0	28.7	23.8	26.1	31.9	16.3	29.6	31.9	26.4	33.9	50.0	61.3	45.3	28.9	47.2
MAY	25.7	44.0	28.3	28.6	12.9	10.9	64.0	15.7	26.4	25.4	30.6	33.1	17.4	29.1	42.0	25.0	37.7	48.4	68.0	41.7	31.4	48.7
JUN	23.3	37.7	26.5	27.1	11.3	9.0	53.8	16.0	20.7	23.8	23.5	28.7	15.1	27.2	52.9	22.3	33.6	26.7	48.1	26.1	28.6	51.5
JUL	22.5	31.9	27.0	26.9	9.8	6.3	55.3	15.8	21.5	20.8	26.6	27.3	19.2	27.7	71.0	22.1	34.7	26.3	46.1	19.0	26.3	38.9
AUG	22.6	33.9	24.8	27.7	9.5	6.5	54.6	16.2	22.0	21.2	25.2	26.7	22.0	24.5	71.7	25.4	32.0	29.4	40.3	27.7	25.2	37.8
SEP	25.2	46.4	24.2	27.6	15.1	11.7	56.9	17.7	19.5	23.8	34.3	27.8	23.6	26.2	70.7	28.6	34.5	45.3	57.3	48.4	28.4	32.0
OCT	27.9	54.6	25.5	31.5	17.1	11.4	65.9	20.2	25.3	26.0	42.7	30.1	27.5	27.8	64.4	28.9	37.0	51.7	59.3	57.5	31.4	41.7
NOV	27.2	52.2	23.1	32.5	16.8	11.5	60.2	19.7	24.1	25.4	45.8	27.4	29.3	25.6	63.3	28.6	37.6	52.4	55.8	67.2	29.0	41.3
DEC	26.4	50.3	24.5	31.5	14.8	13.9	60.6	18.1	24.4	25.0	35.9	28.0	30.6	23.9	72.6	28.9	36.2	43.9	53.2	56.7	28.8	40.3
96 JAN	23.7	42.5	24.3	27.1	12.0	14.1	55.1	15.2	19.7	22.2	26.7	25.3	34.0	23.8	74.1	24.8	32.1	36.3	51.3	35.8	25.2	43.8
FEB	23.5	44.9	22.2	27.9	13.3	13.9	52.6	15.3	20.5	21.5	38.0	22.3	31.5	25.1	85.9	22.6	30.4	43.9	49.4	62.9	25.5	46.3
MAR	27.8	57.3	24.5	36.2	16.2	19.4	61.5	18.7	25.1	23.5	35.2	26.9	34.6	32.8	91.4	27.6	36.8	60.2	60.6	69.6	31.3	45.9
APR	28.3	58.3	24.0	35.9	15.7	25.1	65.6	18.1	25.7	24.4	44.3	29.7	35.5	32.5	96.2	28.6	36.4	57.6	76.4	72.6	34.2	50.9
MAY	28.6	58.6	24.9	35.1	14.8	27.2	72.7	17.4	29.0	24.6	40.0	33.0	36.9	33.7	97.1	26.9	38.5	54.3	73.7	79.7	34.6	48.0
JUN	26.9	50.9	24.6	30.0	12.7	26.4	63.4	18.5	26.0	21.8	43.4	30.7	33.4	31.1	100.0	23.3	36.5	38.4	67.8	58.2	29.7	46.3
JUL	25.7	46.9	23.9	25.0	15.0	22.2	57.3	16.9	29.2	18.4	53.8	28.5	36.0	29.8	95.8	23.1	36.7	31.3	65.6	52.5	28.8	38.8
AUG	25.1	44.1	22.9	21.2	15.9	27.9	56.6	18.2	28.7	17.8	27.7	26.7	36.0	29.2	99.5	19.2	33.4	23.4	59.9	49.1	26.4	48.9

**GRAPH 8
JOBS/FDP PARTICIPATION RATES (%)**



GRAPH 8 (CONTINUED)
JOBS/FDP PARTICIPATION RATES (%)



New Jersey Department of Human Services
Division of Family Development

TABLE 9
GENERAL ASSISTANCE Program

State Summary

**NUMBER OF EMPLOYABLE AND UNEMPLOYABLE RECIPIENTS
AND EMERGENCY ASSISTANCE PAYMENTS
DURING REPORT MONTH
May 1994 through May 1996**

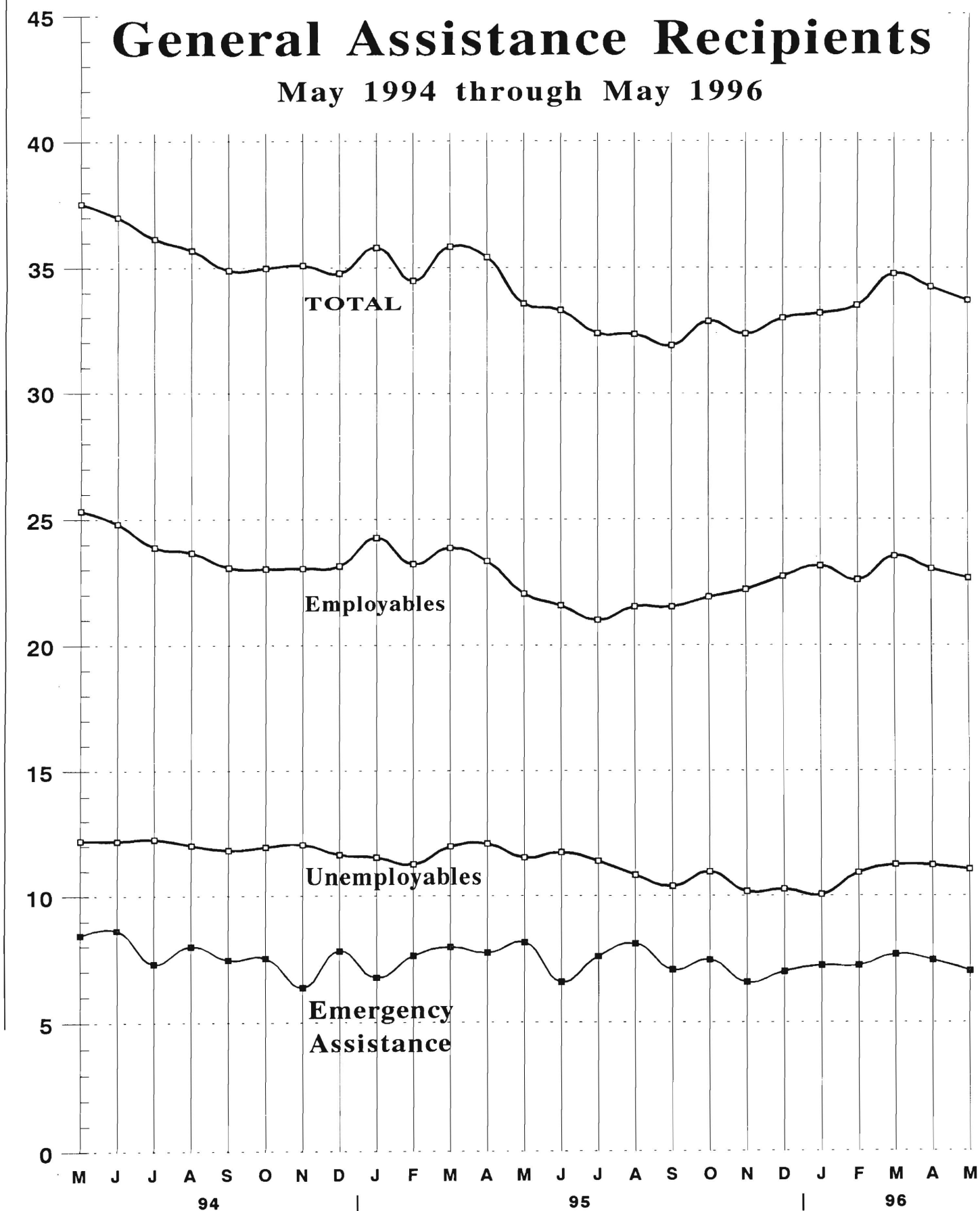
	<u>All</u>	<u>Persons</u>	<u>Aided</u>		<u>Emergency</u>	<u>Assistance</u>	<u>Payments</u>
	Employable	Unemployable	Total		Temporary Rental Assist	Other GA-EA	Total
1994 May	25,327	12,212	37,539		4,828	3,604	8,432
Jun	24,814	12,190	37,004		4,587	4,035	8,622
Jul	23,884	12,261	36,145		4,603	2,685	7,288
Aug	23,671	12,018	35,689		4,489	3,488	7,977
Sep	23,075	11,825	34,900		4,424	3,015	7,439
Oct	23,031	11,950	34,981		4,472	3,032	7,504
Nov	23,046	12,045	35,091		4,607	1,762	6,369
Dec	23,142	11,642	34,784		4,657	3,137	7,794
AVERAGE (12 mos.)	24,374	11,813	36,187		4,651	3,181	7,832
1995 Jan	24,262	11,537	35,799		4,408	2,343	6,751
Feb	23,219	11,264	34,483		4,851	2,748	7,599
Mar	23,855	11,976	35,831		5,036	2,909	7,945
Apr	23,337	12,082	35,419		4,833	2,887	7,720
May	22,046	11,527	33,573		4,995	3,135	8,130
Jun	21,575	11,738	33,313		4,423	2,146	6,569
Jul	21,000	11,391	32,391		4,048	3,526	7,574
Aug	21,526	10,829	32,355		4,174	3,909	8,083
Sep	21,525	10,389	31,914		4,110	2,945	7,055
Oct	21,913	10,959	32,872		3,939	3,497	7,436
Nov	22,206	10,171	32,377		4,141	2,422	6,563
Dec	22,732	10,268	33,000		4,086	2,902	6,988
AVERAGE	22,433	11,178	33,611		4,420	2,947	7,368
1996 Jan	23,140	10,054	33,194		4,421	2,803	7,224
Feb	22,584	10,927	33,511		4,567	2,651	7,218
Mar	23,528	11,243	34,771		4,472	3,185	7,657
Apr	23,028	11,221	34,249		4,490	2,944	7,434
May	22,657	11,054	33,711		4,064	2,947	7,011
AVERAGE	22,987	10,900	33,887		4,403	2,906	7,309

Data Sources: NJ Division of Family Development, GA Fiscal Unit

Thousands

General Assistance Recipients

May 1994 through May 1996



New Jersey Department of Human Services
Division of Family Development

TABLE 10

CHILD SUPPORT AND PATERNITY COLLECTIONS

State Summary

\$1000's

COLLECTION SOURCE	State Fiscal Years			Percent Change	
	1994	1995	1996	1994-1995	1995-1996

AFDC & FOSTER CARE

Federal Tax	\$15,255	\$15,664	\$19,081	2.7%	21.8%
State Tax	1,970	1,762	1,766	-10.6%	0.2%
Unempl. Ins. Ben.	4,975	3,867	5,327	-22.3%	37.8%
Income Withholding	43,219	45,262	42,742	4.7%	-5.6%
Other/Own Behalf	18,138	18,431	15,718	1.6%	-14.7%
From Other States	3,621	3,429	3,345	-5.3%	-2.5%
For Other States	5,269	6,873	7,524	30.5%	9.5%
TOTAL COLLECTION	\$92,447	\$95,289	95,502	3.1%	0.2%

NON-AFDC

Federal Tax	\$6,547	\$6,822	\$9,237	4.2%	35.4%
State Tax	2,210	2,044	2,220	-7.5%	8.6%
Unempl. Ins. Ben.	15,110	13,338	18,050	-11.7%	35.3%
Income Withholding	214,405	251,694	254,997	17.4%	1.3%
Other/Own Behalf	144,715	156,899	132,531	8.4%	-15.5%
From Other States	19,969	20,835	20,559	4.3%	-1.3%
For Other States	20,015	27,338	28,262	36.6%	3.4%
TOTAL COLLECTION	\$422,970	\$478,969	465,854	13.2%	-2.7%

TOTAL

Federal Tax	\$21,802	\$22,486	\$28,317	3.1%	25.9%
State Tax	4,179	3,806	3,986	-8.9%	4.7%
Unempl. Ins. Ben.	20,085	17,205	23,377	-14.3%	35.9%
Income Withholding	257,624	296,957	297,739	15.3%	0.3%
Other/Own Behalf	162,853	175,329	148,249	7.7%	-15.4%
From Other States	23,590	24,264	23,904	2.9%	-1.5%
For Other States	25,284	34,211	35,785	35.3%	4.6%
TOTAL COLLECTION	\$515,417	\$574,258	561,356	11.4%	-2.2%

Collection Source: Reflects Collections Recorded by County Probation Departments

Explanatory Notes

The Department of Human Services Division of Family Development provides basic income and an opportunity to achieve self-sufficiency for individuals and families served by the Division's programs. The Division provides leadership, direction and supervision to those public agencies responsible for administering those programs and plans for and develops policies to promote self-sufficiency.

AID TO FAMILIES WITH DEPENDENT CHILDREN (AFDC) - Financial assistance for dependent children and their natural or adoptive parents, or certain other relatives recognized as taking the place of a parent.

Regular AFDC (C Segment) - assistance when only one parent is in the home due to death or absence, or both parents are in the home but at least one is incapacitated.

Unemployed Parents (F Segment) - assistance when both parents are in the home, neither is incapacitated and the primary wage earner meets the federally defined criteria for unemployment.

State AFDC (N Segment) - assistance when both parents are in the home, neither is incapacitated, and the primary wage earner does not meet the federal definition of unemployment.

Medicaid Only - families no longer receiving AFDC financial assistance but remaining eligible for Medicaid under applicable provisions which extend coverage beyond period of AFDC assistance.

FOOD STAMP PROGRAM (FS) - Authorized by Congress as a nutritional supplement program to provide low income households with more food of greater variety and better nutrition. Program eligibility is based on household income, resources, and expenses for medical, shelter, and dependent care. CWA staff refer certain recipients to the New Jersey Department of Labor for participation in the Food Stamp Employment and Training Program.

EMERGENCY ASSISTANCE (EA) - Payments to those eligible for AFDC, Supplemental Security Income or General Assistance, authorized during the 30 consecutive days immediately following the emergency (defined as a substantial loss of shelter, food, clothing, or household furnishings by fire, flood or other similar disaster) or if the eligible individual or family is in an imminent or actual state of homelessness.

JOBS/FDP

JOB OPPORTUNITY AND BASIC SKILLS PROGRAM (JOBS) - Federally mandated work/training program for recipients of AFDC established by the Family Support Act of 1988 under Part F of Title IV of the Social Security Act.

FAMILY DEVELOPMENT PROGRAM (FDP) - Reform legislation enacted by the State Legislature in January 1992 to: build, strengthen, and support the family unit; encourage family formation; reduce the long-term aspects of welfare dependency; look to the needs of the family unit as a whole; emphasize education and training for all family members; maximize use of educational, training and employment resources; and develop genuine private sector job opportunities.

SNAPSHOT OF ACTIVITY AT POINT IN TIME - Status of activities as of the end of the month:

Total Non-Exempt JOBS/FDP Recipients - Calculation of the number of mandatory IV-F individuals (FAMIS report # FB304).

Employment Directed Activities (EDA) - From Activities Summary Report (OMEGA report # RM064). Unduplicated count of persons participating in **Training, Education, or Job Search**.

Participants in EDA, Receiving Support Services - From Issuance Disbursement Summary (OMEGA report # RM703). Total number of active participants who show receipt of **Training Related Expenses** or **Child Care**.

Participation Rate (JOBS/FDP) - Federally mandated calculation method, dividing the number of participants whose combined and averaged weekly hours of participation in qualifying activities equals or exceeds 20 hours per week by the total number of non-exempt IV-F recipients. As of the end of the month.

ACTIVITY FOR THE MONTH - Number of participants with the indicated activity during the month:

Participants with First Case Management Interview - From Activities Summary Report (OMEGA report # RM064).

Number of Persons Employed This Month, Still Receiving AFDC - From Activities Summary Report (OMEGA report # RM064).

Number of Persons Closed on FAMIS Due to Earnings - From FAMIS report # FM463.

Post AFDC and Receiving Child Care - Persons no longer in receipt of AFDC, but still receiving child care. From Issuance Disbursement Summary (OMEGA report # RM703).

New Jersey Department of Human Services
Division of Family Development

TABLE 11
GENERAL ASSISTANCE PROGRAM
EMPLOYABLE AND UNEMPLOYABLE RECIPIENTS
AND EMERGENCY ASSISTANCE PAYMENTS,
COUNTIES AND 21 LARGEST MUNICIPALITIES
May 1996

County/ Municipality	Total Persons Aided			Emergency Assistance Payments		
	Employable	Unemployable	Total	Temporary Rental Assist.	Other GA-EA	Total
ATLANTIC	1,185	571	1,756	23	21	44
BERGEN	556	470	1,026	282	86	368
BURLINGTON	458	363	821	159	136	295
CAMDEN	2,097	1,084	3,181	312	235	547
CAPE MAY	128	79	207	25	13	38
CUMBERLAND	370	173	543	8	12	20
ESSEX	7,865	2,557	10,422	1,076	1,318	2,394
GLOUCESTER	119	131	250	9	10	19
HUDSON	1,194	1,203	2,397	189	65	254
HUNTERDON	53	52	105	20	18	38
MERCER	1,842	822	2,664	353	331	684
MIDDLESEX	538	545	1,083	111	44	155
MONMOUTH	762	667	1,429	351	79	430
MORRIS	141	208	349	36	23	59
OCEAN	618	379	997	370	269	639
PASSAIC	2,572	653	3,225	464	197	661
SALEM	120	68	188	18	25	43
SOMERSET	85	105	190	30	17	47
SUSSEX	44	42	86	26	3	29
UNION	1,855	826	2,681	183	44	227
WARREN	55	56	111	19	1	20
TOTAL NJ	22,657	11,054	33,711	4,064	2,947	7,011

Atlantic City	980	350	1,330	2	14	16
Mount Holly Twp	135	82	217	40	75	115
Camden City	1,797	726	2,523	207	169	376
Vineland City	189	87	276	3	10	13
East Orange City	538	404	942	262	43	305
Irvington Town	265	90	355	40	6	46
Montclair Town	177	71	248	39	13	52
Newark City	6,322	1,764	8,086	678	1,235	1,913
Orange City	425	64	489	35	13	48
Bayonne City	135	49	184	8	0	8
Hoboken City	142	117	259	24	4	28
Jersey City	709	483	1,192	87	23	110
Trenton City	1,727	707	2,434	328	299	627
Perth Amboy City	142	113	255	19	4	23
Asbury Park City	244	104	348	110	4	114
Long Branch City	210	110	320	74	34	108
Lakewood Twp	315	117	432	193	26	219
Passaic City	746	240	986	238	64	302
Paterson City	1,704	278	1,982	160	100	260
Elizabeth City	1,220	457	1,677	0	0	0
Plainfield City	284	120	404	40	2	42
Total	18,406	6,533	24,939	2,587	2,138	4,725

Source: NJ Division of Family Development, GA Fiscal Unit