

974.905
044.4
C-1

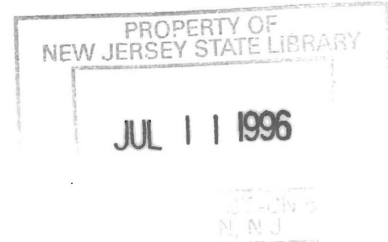
DEPARTMENT OF HUMAN SERVICES
INTER-OFFICE COMMUNICATION

DATE June 24, 1996

TO William Waldman
Commissioner

FROM Karen Highsmith
Acting Director

K Highsmith



SUBJECT CURRENT PROGRAM STATISTICS

Attached please find CURRENT PROGRAM STATISTICS, including the FDP Statistical Summary for April 1996. Also included are explanatory notes for the various data elements.

Should you have any questions, please feel free to call me.

KH:kas:c

Attachments

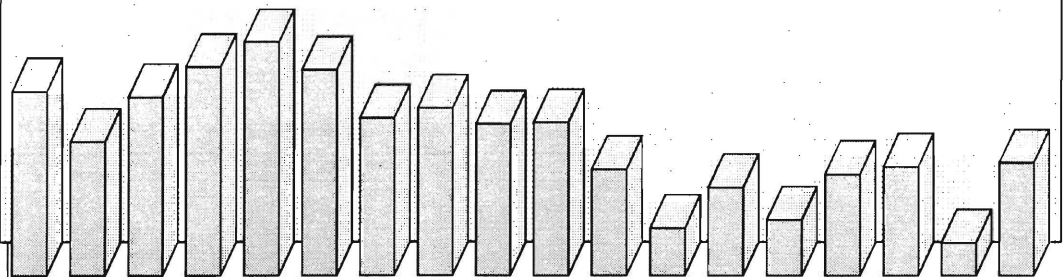
c Guhl
Grant
Tencza

State of New Jersey
Department of Human Services
Division of Family Development

CURRENT PROGRAM STATISTICS

April 1996

Karen Highsmith, Acting Director



State of New Jersey
Department of Human Services
Division of Family Development

CURRENT PROGRAM STATISTICS
April 1996

TABLE OF CONTENTS

Page

Highlights of Current Program Statistics	1-3
---	------------

Statistics by County, April 1996

Table 1 AFDC	4
Graph 1 Current AFDC Families.....	5
Table 2 Food Stamp Program.....	6
Graph 2 Current Food Stamp Households/Persons	7
Table 3 Emergency Assistance Program	8
Graph 3 Current Families Receiving Emergency Assistance.....	9
Table 4 Family Development Program.....	10

State Summary, 1994 - 1996

Table 5 AFDC, April 1994 - April 1996	12
Graph 4 Families Receiving AFDC, 4/94 - 4/96	12
Table 6 Food Stamp Program, April 1994 - April 1996.....	13
Graph 5 Food Stamp Households, 4/94 - 4/96	14
Graph 6 Food Stamp Recipients, 4/94 - 4/96	15
Table 7 Emergency Assistance Program, April 1994 - April 1996	16
Graph 7 AFDC Families Receiving Emergency Assistance 4/94 - 4/96	17
Table 8 JOBS/FDP Participation Rates, by County and Statewide, April 1994 - April 1996	18
Graph 8 JOBS/FDP Participation Rates, 4/94 - 4/96	18-19
Table 9 General Assistance, October 1993 - October 1995	20
Graph 9 General Assistance Recipients 10/93 -10/95	21
Table 10 Child Support and Paternity, Fiscal Years 1994-1996	22
Explanatory Notes.....	23-24

Supplement

Table 11 General Assistance Recipients by County and Municipality, October 1995	25
---	----

Highlights of Current Program Statistics

AFDC (Tables 1 and 5, Graphs 1 and 4)

114,800 eligible families in New Jersey were receiving AFDC as of the end of April 1996:

- Less than **103,400** single head of household families (Regular AFDC, C segment).
- Among two-parent families, about the same number, over **3200**, of Unemployed Parent families (F Segment) and State AFDC families (N Segment).
- **5000** Medicaid Only families.
- The largest numbers of families by county: Essex with **29,000**, Hudson with **18,100**, and Camden County with **13,100**. (52 percent of all AFDC families)
- Other counties ranged from under **200** families in Hunterdon to **7,300** in Passaic County.

There were about the same number of eligible families in April 1996 as in February and March, with a total decline of nearly 10,000 since the May/June 1994 peak of 124,600.

- There were also about the same number of C segment families in April 1996 as in February and March, and **8400** less than the peak of **111,800** in June 1994.
- F segment families declined from over **4500** in May 1994 to about **3200** by October 1995, with almost no change since then.
- State AFDC (N segment) also peaked at almost **3500** in May 1994, but slowly declined to less than **3300** by July 1995 and has remained almost unchanged since then.
- Medicaid Only families remained at or below **5000** in 1994, but averaged nearly **5200** for 1995. For the first four months of 1996 they have averaged about **5000**.

FOOD STAMP PROGRAM (Tables 2 and 6, Graphs 2, 5, and 6)

At the end of April 1996, about 223,000 households were participating in the Food Stamp Program:

- **108,800** AFDC households with **340,600** persons.
- **114,200** Other Low Income households with **173,800** persons.
- **48 percent** were in Essex (**55,500**), Hudson (**30,200**) and Camden (**21,600**) Counties.
- Food Stamp households included about **514,000** persons, **247,000** adults and **267,000** children.
- In April, the number of adults exceeded the number of children in Food Stamp households in **nine** counties (Atlantic, Bergen, Hunterdon, Middlesex, Monmouth, Morris, Somerset, Sussex, and Warren).

There were 222,000 Food Stamp households in New Jersey in April 1994. The number has remained around the 220,000 to 223,000 range since then, except for a peak in March 1995 of almost 225,000.

- The number of Other Low Income households continues to rise and has exceeded the number of AFDC(FS) households since November 1995, with an overage of almost **5400** in April 1996. Other Low Income households receiving Food Stamps surpassed **100,000** three years ago in March 1993, exceeded **106,000** in April 1994 and **114,000** by April 1996. AFDC(FS) households were nearly **116,000** in April 1994, then declined below **109,000** by April 1996.
- Total Recipients were almost **531,000** in April 1994. After declining to **522,000** by January 1995 they peaked again at **529,500** in March 1995, then declined to less than **512,000** in December 1995. The level has remained around **515,000** from February through April 1996.
- The number of Recipient Adults averaged about **246,000** for 1994 through the first four months of 1996. There were peaks of **250,000** in March 1995 and nearly **248,000** in March 1996.
- The number of Recipient Children was over **282,000** in April 1994 and almost **280,000** in March 1995. The level has since declined and was below **267,000** for the first time in the past two years in April 1996.

EMERGENCY ASSISTANCE (Tables 3 and 7, Graphs 3 and 7)

In April 1996 5,285 eligible AFDC families received Emergency Assistance (EA) payments in New Jersey:

- **1,760** families with Temporary Rental Assistance (TRA)
- **309** motel placements
- **364** emergency shelter placements
- All other AFDC-EA accounted for **2,852** families, including back rent, back utilities, security deposits, furnishings, clothing and food allowance, or transitional housing.
- **1408** AFDC families in Essex County received EA, with **708** in Middlesex, **698** in Passaic, and **464** in Bergen. All other counties had between **11** and **358**, with nine counties **under 100**.

In the past two years the highest number of AFDC families receiving EA was in May of 1994, with close to 8000. The number had dropped as low as 4500 by February 1996, then increased to almost 5300 by April.

- The number of families provided TRA each month has declined steadily from about **3600** in early 1994, and was below **1800** for the first four months of 1996.
- Emergency Shelter and Motel Housing have each been provided to **under 500** families each month, except for three months in 1994 and one in 1995 when Motel Housing **exceeded 500**. Both series remained below **400** during the first four months of 1996.
- An average of **3300** families received Other EA in 1994 and **2800** in 1995. The number dropped to less than **2100** in February 1996 but returned to over **2800** in April.

JOBS/FDP PARTICIPATION RATES (Table 8, Graph 8)

The Statewide JOBS/FDP participation rate of **28.3 percent** in April 1996 was the highest month in the last two years. This is the second month of increase since February. The rate is about four percent above April 1995 and approaching ten percent above two years ago when the rate was only **18.9 percent**. A clear upward shift has been evident over the past two years.

- Since April 1994, many counties have shown upward movement in participation rates. Most counties show small fluctuations, with Burlington, Cape May, Essex, Hudson, Middlesex, Monmouth, Ocean, Passaic and Union having clear upward movement. Bergen, Camden, Gloucester and Mercer have had slight increases. Cumberland has maintained very high participation rates overall. Atlantic, Salem, Somerset, Sussex, and Warren also exhibited high rates, but have had wide fluctuations. Hunterdon jumped to higher levels during 1995. Morris increased markedly in 1995 and remains at record levels.
- For April 1996 County rates were distributed as follows:
 - 15 to 20 percent** -- Camden and Essex
 - 20 to 30 percent** -- Bergen, Cape May, Gloucester, Hudson, Mercer and Ocean
 - 30 to 40 percent** -- Burlington, Hunterdon, Middlesex, Monmouth, Passaic and Union
 - 40 to 60 percent** -- Atlantic, Hunterdon, Salem and Warren
 - 60 to 80 percent** -- Cumberland, Somerset, and Sussex
 - over 90 percent** -- Morris
- From March to April 1996, participation rates increased in fourteen of the State's 21 counties.

GENERAL ASSISTANCE (Table 9, Graph 9)

For the period October 1993 through October 1995 (the latest available information), the number of GA recipients peaked at **38,100** in March 1994. The level held around **35,000** from September 1994 through April 1995, and was below **34,000** each month thereafter.

- The number of employable recipients peaked in March 1994 (**26,400**) and has been declining since then. The level remained slightly over **23,000** from September through December 1994. After increasing to over **24,000** in January 1995, the level resumed declining, and has been at or below **22,000** since May 1995.
- Unemployable GA recipients remained within a relatively narrow range then began to decline noticeably. The level remained between **11,000 and 12,300** from October 1993 through July 1995. Since July 1995, Unemployable GA recipients have been below **11,000**.

CHILD SUPPORT AND PATERNITY COLLECTIONS (Table 10)

Total collections of the Child Support and Paternity Program remained nearly unchanged at **\$412 million** for the first nine months of SFY 1996 compared to SFY 1995.

- AFDC/Foster Care collections increased from almost **\$62 million** to more than **\$66 million**, or **7.3 percent**. This was offset by a decrease in Non-AFDC collections which dropped from more than **\$350 million** to less than **\$346 million**, a decline of **1.4 percent**.
- Federal tax collections increased by **\$8 million** or almost **200 percent**, and UIB increased by almost **\$6 million** or **47 percent**. This was offset by a **\$20 million** decline (**15 percent**) in the Other/Own Behalf category.

New Jersey Department of Human Services
Division of Family Development

TABLE 1

AFDC Program

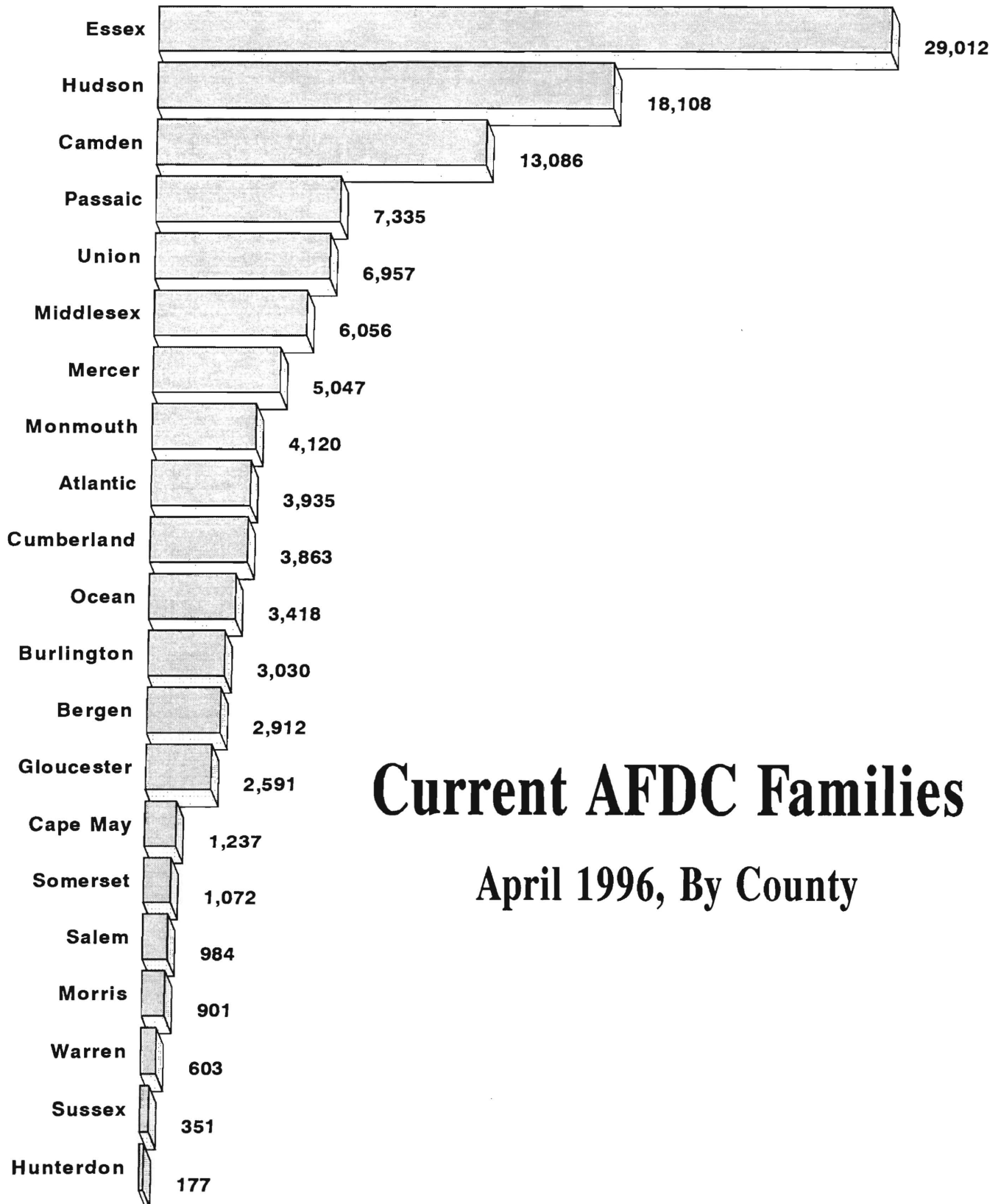
**NUMBER OF APPLICATIONS AND TERMINATIONS DURING REPORT MONTH, AND
NUMBER OF ELIGIBLE FAMILIES RECEIVING AFDC AT END OF REPORT MONTH**

April 1996

County	Applications Approved	Terminations	Regular AFDC (C Segment)	Unemployed Parents (F)	State AFDC (N)	Medicaid Only	TOTAL AFDC
Atlantic	310	377	3,594	129	78	134	3,935
Bergen	176	159	2,573	132	127	80	2,912
Burlington	315	308	2,617	94	86	233	3,030
Camden	966	951	11,458	539	376	713	13,086
Cape May	118	89	990	84	84	79	1,237
Cumberland	314	311	3,227	207	204	225	3,863
Essex	1,099	1,265	27,610	434	223	745	29,012
Gloucester	248	257	2,226	126	79	160	2,591
Hudson	603	656	16,288	327	625	868	18,108
Hunterdon	21	24	147	5	7	18	177
Mercer	479	494	4,534	92	101	320	5,047
Middlesex	488	492	5,067	226	279	484	6,056
Monmouth	258	279	3,798	82	185	55	4,120
Morris	69	87	807	34	25	35	901
Ocean	272	274	2,893	159	159	207	3,418
Passaic	378	411	6,715	289	259	72	7,335
Salem	109	120	875	20	31	58	984
Somerset	130	123	862	47	39	124	1,072
Sussex	45	43	290	9	5	47	351
Union	450	453	6,266	124	208	359	6,957
Warren	48	68	515	33	31	24	603
NJ TOTAL	6,896	7,241	103,352	3,192	3,211	5,040	114,795

Data Sources: Data is derived from NJ Division of Family Development's FAMIS report # FF-012.

GRAPH 1



Current AFDC Families

April 1996, By County

New Jersey Department of Human Services
Division of Family Development

TABLE 2

FOOD STAMP Program

NUMBER OF ATP'S ISSUED TO HOUSEHOLDS, PERSONS, ADULTS AND CHILDREN AT THE END OF THE REPORT MONTH

April 1996

County	HOUSEHOLDS			PERSONS				
	AFDC	Other low income	TOTAL	TOTAL	AFDC	Other low income	Adults	Children
Atlantic	3,722	4,953	8,675	18,770	11,929	6,841	9,416	9,354
Bergen	2,670	5,734	8,404	16,739	7,966	8,773	9,787	6,952
Burlington	2,673	3,010	5,683	12,991	8,146	4,845	6,435	6,556
Camden	12,617	8,977	21,594	53,998	41,088	12,910	24,296	29,702
Cape May	1,195	1,320	2,515	6,262	4,001	2,261	3,059	3,203
Cumberland	3,752	2,836	6,588	17,103	12,565	4,538	7,822	9,281
Essex	28,388	27,148	55,536	126,702	87,844	38,858	59,584	67,118
Gloucester	2,375	1,931	4,306	10,592	7,340	3,252	5,009	5,583
Hudson	17,238	12,936	30,174	72,474	52,420	20,054	32,887	39,587
Hunterdon	138	366	504	997	418	579	571	426
Mercer	4,580	4,570	9,150	19,873	13,959	5,914	9,506	10,367
Middlesex	5,505	6,142	11,647	25,929	16,435	9,494	12,983	12,946
Monmouth	3,937	6,459	10,396	22,468	12,527	9,941	11,697	10,771
Morris	780	1,874	2,654	5,280	2,303	2,977	3,100	2,180
Ocean	3,445	4,664	8,109	20,243	11,242	9,001	9,584	10,659
Passaic	6,978	9,777	16,755	38,619	22,851	15,768	18,794	19,825
Salem	944	792	1,736	4,293	3,055	1,238	1,971	2,322
Somerset	994	1,890	2,884	5,718	2,889	2,829	3,135	2,583
Sussex	324	642	966	2,191	975	1,216	1,181	1,010
Union	5,964	7,125	13,089	29,476	18,893	10,583	14,662	14,814
Warren	568	1,017	1,585	3,657	1,751	1,906	1,901	1,756
NJ TOTAL	108,787	114,163	222,950	514,375	340,597	173,778	247,380	266,995

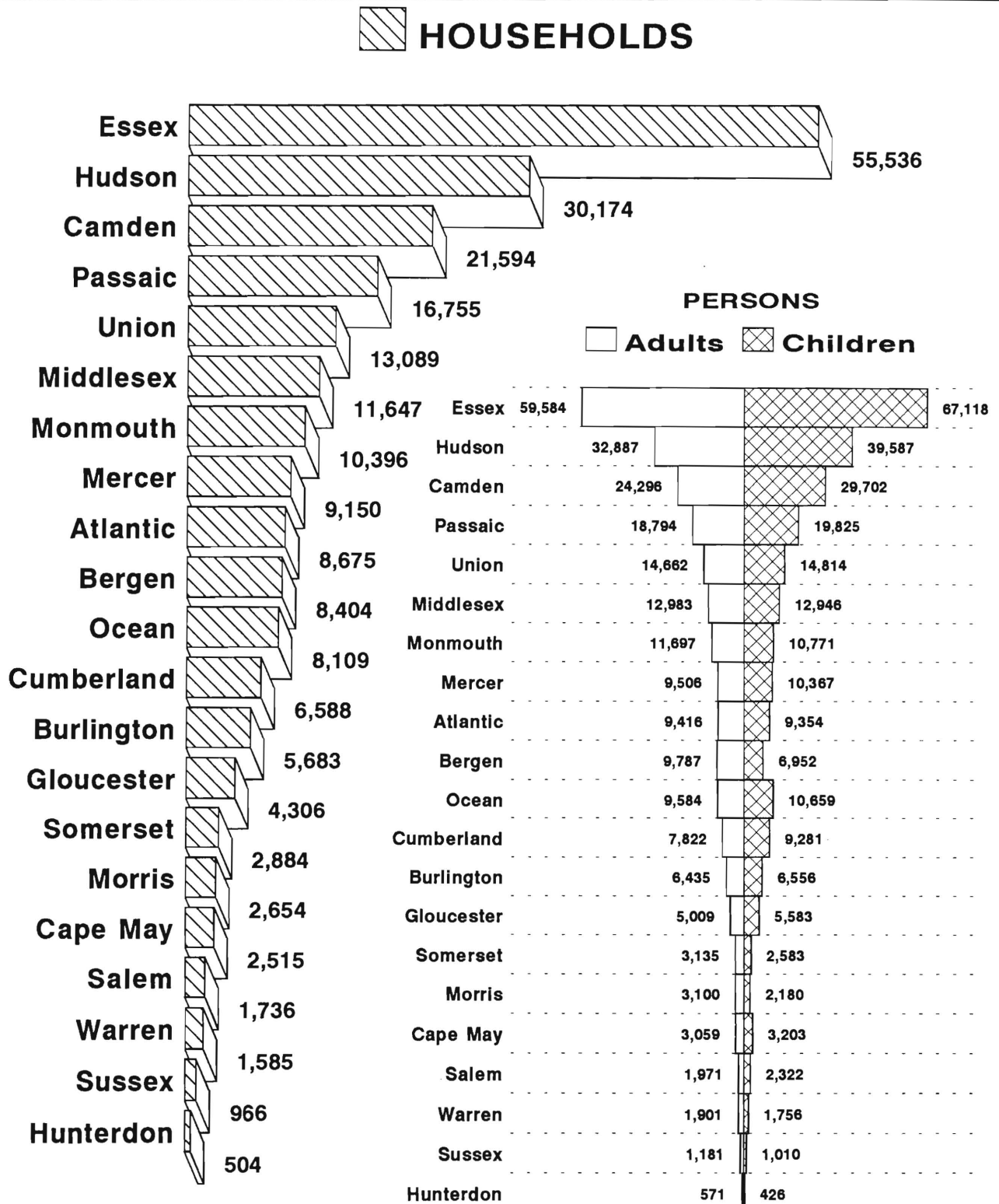
ATP - Authorization to Participate, may include some duplication

Data Sources: Data is derived from NJ Division of Family Development's FAMIS report # FB-160.

GRAPH 2

Food Stamp Households

April 1996, By County



New Jersey Department of Human Services
Division of Family Development

TABLE 3

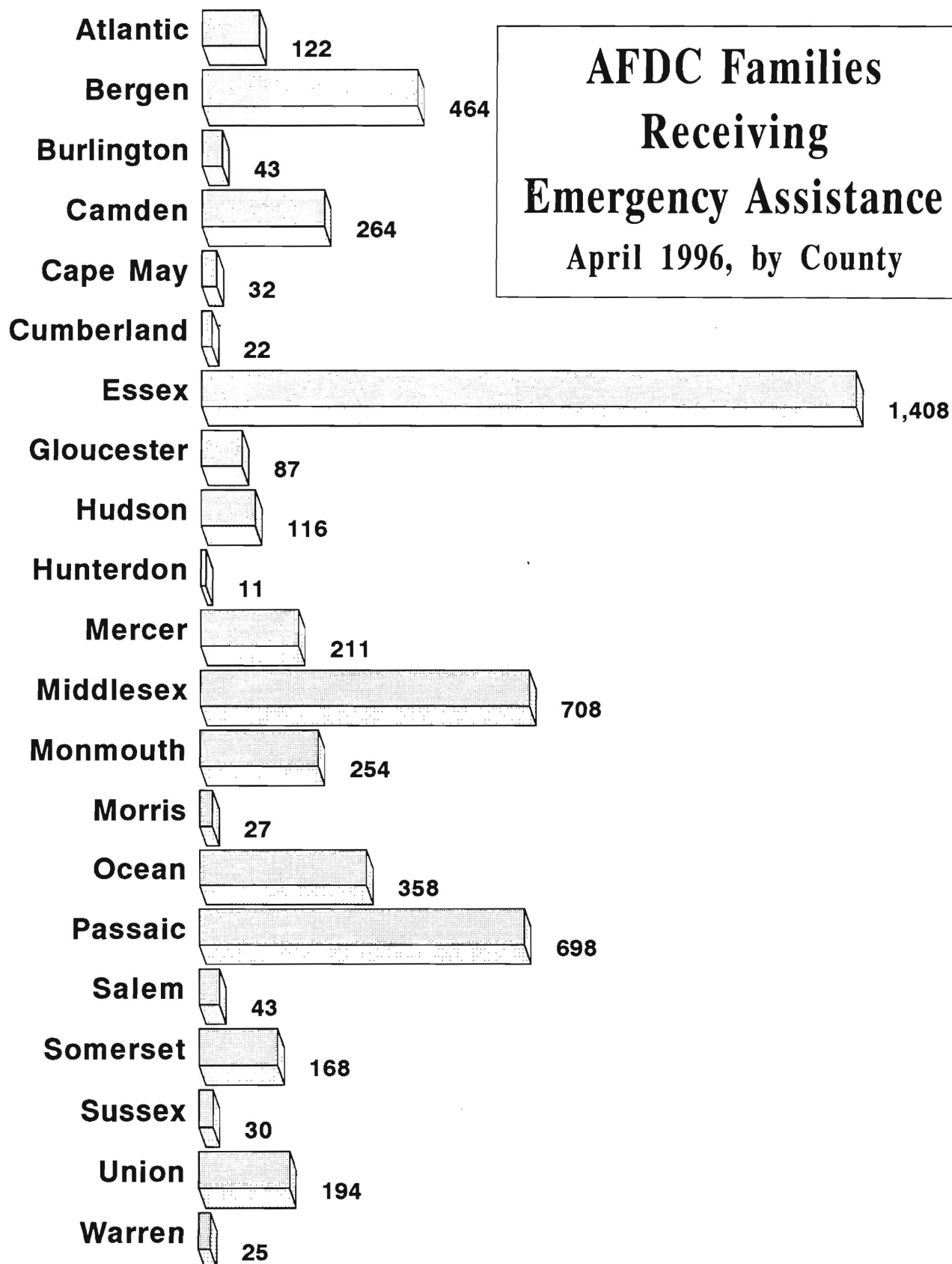
EMERGENCY ASSISTANCE RECIPIENTS

NUMBER OF ELIGIBLE FAMILIES RECEIVING EMERGENCY ASSISTANCE PAYMENTS (UNDUPLICATED CASES)

April 1996

County	AFDC Families Receiving Emergency Assistance					SSI Recipients Receiving EA
	TOTAL AFDC -EA	Temporary Rental Assist	Motel Housing	Emergency Shelter	Other AFDC-EA	
ATLANTIC	122	39	14	21	48	50
BERGEN	464	238	44	30	152	21
BURLINGTON	43	2	1	30	10	2
CAMDEN	264	77	3	21	163	19
CAPE MAY	32	8	3	1	20	7
CUMBERLAND	22	1	0	13	8	9
ESSEX	1,408	568	7	75	758	46
GLOUCESTER	87	31	1	28	27	3
HUDSON	116	17	5	6	88	6
HUNTERDON	11	2	1	2	6	0
MERCER	211	94	17	12	88	7
MIDDLESEX	708	382	26	25	275	43
MONMOUTH	254	117	46	3	88	12
MORRIS	27	1	1	8	17	8
OCEAN	358	126	81	2	149	64
PASSAIC	698	3	5	24	666	64
SALEM	43	10	11	2	20	5
SOMERSET	168	16	11	27	114	14
SUSSEX	30	1	12	4	13	8
UNION	194	27	4	28	135	21
WARREN	25	0	16	2	7	5
NJ TOTAL	5,285	1,760	309	364	2,852	414

Data Sources: Derived from NJ Division of Family Development FAMIS Reports #FM 457 and #FM 430-03a.

GRAPH 3

NEW JERSEY DEPARTMENT OF HUMAN SERVICES
DIVISION OF FAMILY DEVELOPMENT

TABLE 4
FAMILY DEVELOPMENT PROGRAM
STATISTICAL SUMMARY

COUNTY	SNAPSHOT OF ACTIVITY AS OF APRIL 1996				ACTIVITY FOR MONTH OF APRIL 1996					
	TOTAL NONEXMT JOBS/FDP RECI- PIENTS	EMPLOYMENT DIRECTED ACTIVITIES(1)			PARTIC IN EDAs & RECEIVE SUPPORT SERVICES		PARTIC W/ 1st C M INTV	# EMPL THIS MONTH & STILL REC AFDC	# CLSD ON FAMIS RE: EARNINGS (2)	POST AFDC & REC CHILD CARE
		TRAIN- ING	EDUCA- TION	JOB SEARCH	TREs	CHILD CARE				
ATLANTIC	1,526	363	268	172	396	236	182	72	68	174
BERGEN	1,820	216	134	30	217	141	43	21	52	74
BURLINGTON	1,447	360	165	77	440	192	174	79	74	173
CAMDEN	8,669	547	508	37	789	526	78	38	148	240
CAPE MAY	661	98	14	66	70	16	46	10	15	4
CUMBERLAND	1,582	326	296	22	631	317	239	55	67	102
ESSEX	17,416	1,528	1,027	312	2,454	1,618	341	99	189	170
GLOUCESTER	1,220	312	124	24	498	127	139	10	25	61
HUDSON	11,613	1,035	1,403	131	2,122	1,038	322	55	145	259
HUNTERDON	88	12	18	7	14	15	8	2	4	9
MERCER	3,041	284	280	51	305	266	102	40	68	111
MIDDLESEX	3,388	473	327	140	484	215	236	92	102	117
MONMOUTH	2,576	354	255	115	559	324	135	42	64	173
MORRIS	441	191	50	107	85	90	61	7	28	47
OCEAN	1,981	277	122	106	173	124	91	56	67	137
PASSAIC	3,984	939	401	71	1,101	311	212	50	76	128
SALEM	410	99	105	6	121	107	26	15	21	45
SOMERSET	522	84	78	13	86	80	23	24	27	42
SUSSEX	208	61	55	37	49	43	12	9	14	38
UNION	3,894	455	357	199	660	271	137	25	80	116
WARREN	393	48	61	67	31	21	14	9	11	12
STATE	66,880	8,062	6,048	1,790	11,285	6,078	2,621	810	1,345	2,232

(1) - The number of participants receiving support services may occasionally exceed the number actively participating in EDAs. This can result from extended assessment or evaluation activities, or the issuance of bridge payments.

(2) - FAMIS file date 4/20/96

New Jersey Department of Human Services
Division of Family Development

TABLE 5

AFDC Program State Summary

**NUMBER OF APPLICATIONS AND TERMINATIONS DURING REPORT MONTH,
AND NUMBER OF ELIGIBLE FAMILIES RECEIVING AFDC AT END OF REPORT MONTH**

April 1994 through April 1996

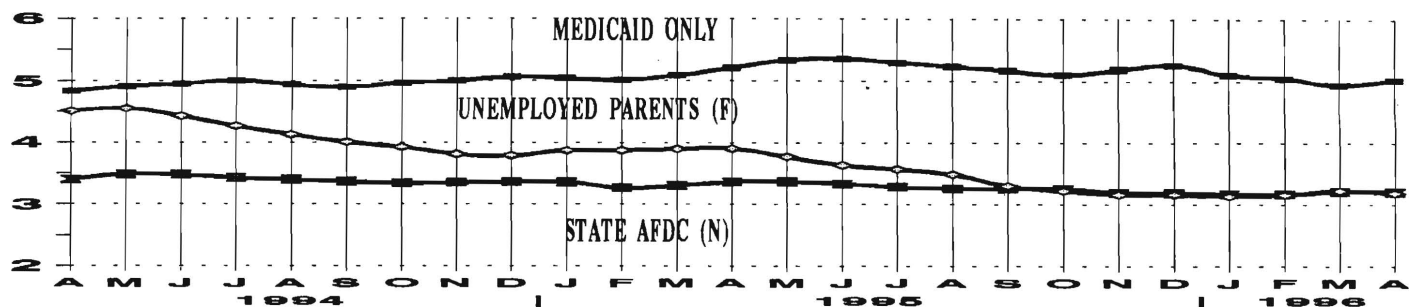
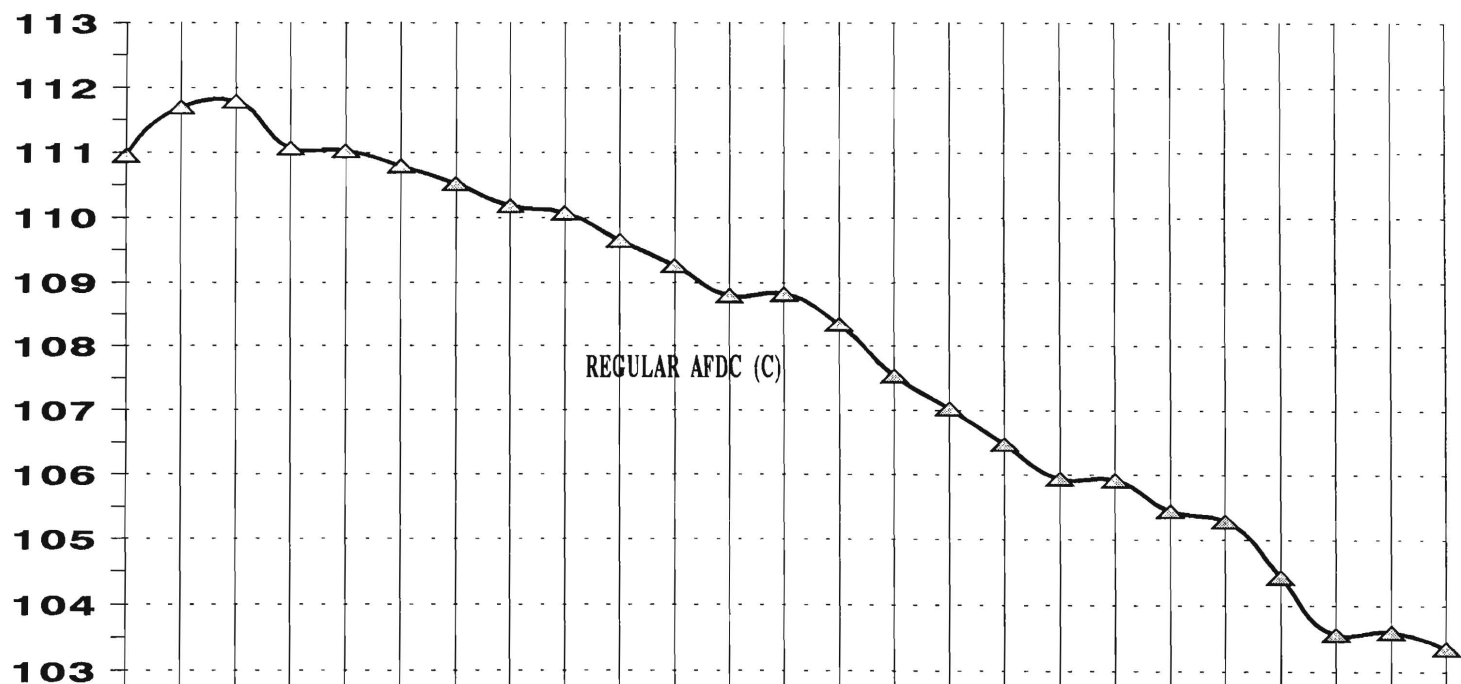
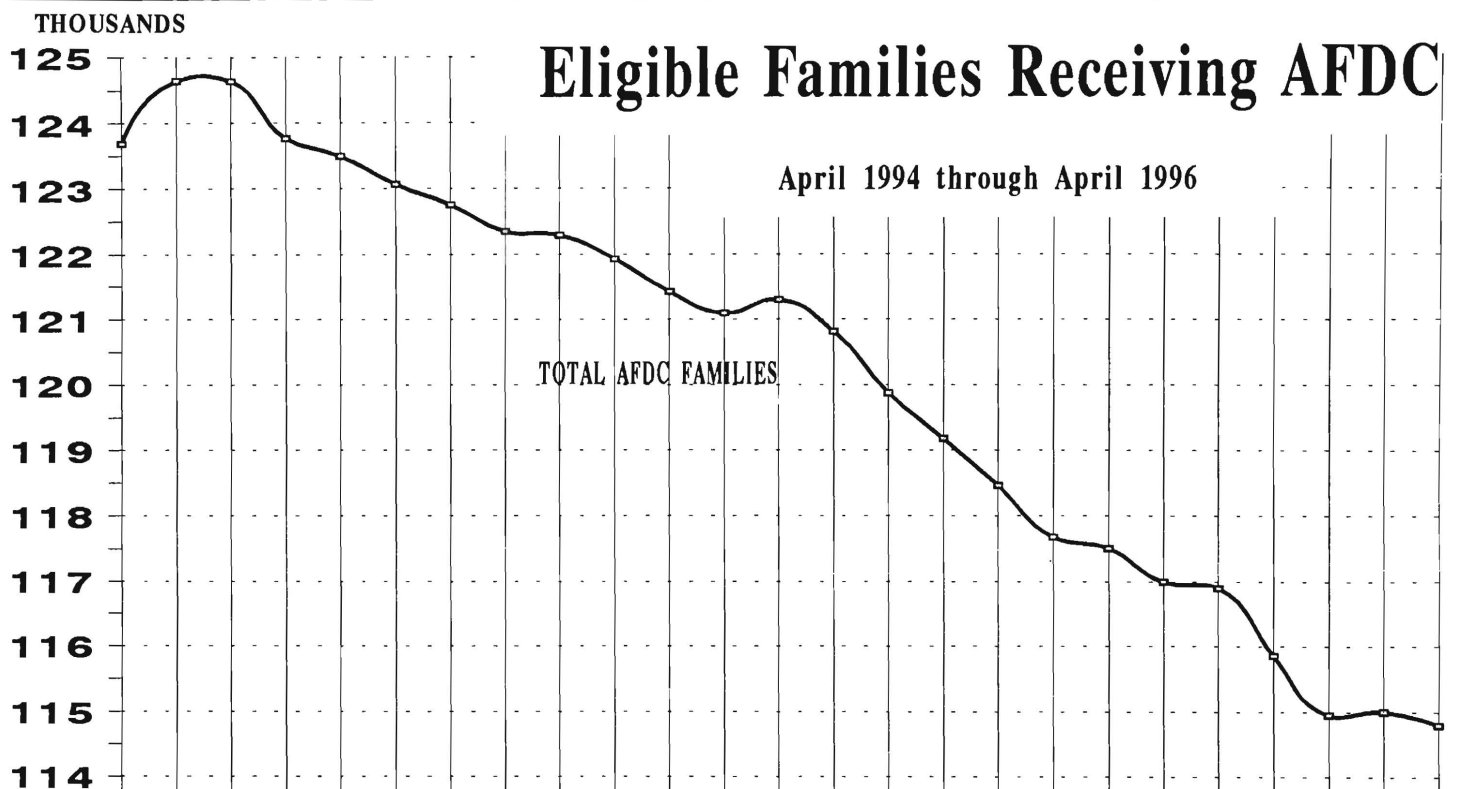
	Applications Approved	Termin- ations	Regular AFDC (C Segment)	Unemployed Parents (F)	State AFDC (N)	Medicaid Only	TOTAL AFDC
1994 Apr	6,284	5,997	110,951	4,506	3,399	4,834	123,690
May	7,094	6,188	111,700	4,549	3,483	4,913	124,645
Jun	5,758	5,742	111,787	4,423	3,477	4,953	124,640
Jul	5,117	5,898	111,064	4,266	3,428	5,007	123,765
Aug	6,435	6,827	111,025	4,128	3,401	4,940	123,494
Sep	6,266	6,754	110,790	4,007	3,369	4,900	123,066
Oct	6,592	6,950	110,517	3,927	3,340	4,966	122,750
Nov	6,344	6,796	110,181	3,814	3,350	5,002	122,347
Dec	5,682	5,890	110,070	3,789	3,360	5,065	122,284
AVERAGE (12 MONTHS)	6,014	6,150	110,901	4,195	3,351	4,928	123,375
1995 Jan	5,583	5,944	109,645	3,875	3,358	5,045	121,923
Feb	5,964	6,515	109,261	3,878	3,270	5,016	121,425
Mar	5,810	6,221	108,800	3,903	3,305	5,088	121,096
Apr	7,096	7,086	108,822	3,907	3,365	5,209	121,303
May	5,288	5,784	108,343	3,773	3,369	5,328	120,813
Jun	5,558	6,458	107,541	3,639	3,336	5,358	119,874
Jul	5,977	6,781	107,028	3,574	3,286	5,293	119,181
Aug	5,547	6,294	106,475	3,489	3,260	5,239	118,463
Sep	5,922	6,647	105,943	3,303	3,260	5,175	117,681
Oct	7,062	7,359	105,917	3,224	3,257	5,110	117,508
Nov	6,083	6,660	105,445	3,164	3,199	5,189	116,997
Dec	5,582	5,775	105,287	3,165	3,189	5,258	116,899
AVERAGE	5,956	6,460	107,376	3,575	3,288	5,192	119,430
1996 Jan	5,332	6,236	104,430	3,139	3,173	5,113	115,855
Feb	5,217	6,283	103,561	3,161	3,170	5,060	114,952
Mar	6,317	6,302	103,598	3,230	3,217	4,956	115,001
Apr	6,896	7,241	103,352	3,192	3,211	5,040	114,795
AVERAGE	5,941	6,516	103,735	3,181	3,193	5,042	115,151

Data Sources: Data is derived from NJ Division of Family Development's FAMIS report # FF-012.

GRAPH 4

Eligible Families Receiving AFDC

April 1994 through April 1996



New Jersey Department of Human Services
Division of Family Development

TABLE 6

FOOD STAMP Program State Summary

NUMBER OF ATP'S ISSUED TO HOUSEHOLDS, PERSONS, ADULTS AND CHILDREN AT THE END OF THE REPORT MONTH

April 1994 through April 1996

		HOUSEHOLDS			PERSONS				
		AFDC	Other low income	TOTAL	TOTAL	AFDC	Other low income	Adults	Children
1994	Apr	115,661	106,454	222,115	530,591	365,241	165,350	248,331	282,260
	May	115,874	106,611	222,485	530,595	364,941	165,654	248,420	282,175
	Jun	115,737	106,683	222,420	529,514	364,394	165,120	248,099	281,415
	Jul	115,172	105,717	220,889	526,075	362,520	163,555	246,142	279,933
	Aug	114,809	106,115	220,924	524,659	361,106	163,553	246,052	278,607
	Sep	114,177	105,972	220,149	521,945	358,849	163,096	244,835	277,110
	Oct	114,039	106,903	220,942	522,406	358,010	164,396	245,676	276,730
	Nov	114,251	107,577	221,828	524,090	358,582	165,508	246,659	277,431
	Dec	114,232	107,467	221,699	523,825	358,446	165,379	246,517	277,308
AVERAGE (12 MONTHS)		114,789	105,924	220,714	525,325	361,323	164,003	246,043	279,282
1995	Jan	113,691	107,493	221,184	522,125	356,763	165,362	245,837	276,288
	Feb	113,830	108,421	222,251	524,344	357,419	166,925	247,107	277,237
	Mar	114,339	110,279	224,618	529,456	359,404	170,052	249,994	279,462
	Apr	113,588	108,991	222,579	524,102	356,717	167,385	247,367	276,735
	May	113,125	109,171	222,296	522,173	355,099	167,074	246,949	275,224
	Jun	112,827	109,198	222,025	521,084	354,211	166,873	246,557	274,527
	Jul	111,635	107,978	219,613	515,478	350,378	165,100	243,727	271,751
	Aug	111,415	109,603	221,018	516,618	349,372	167,246	245,110	271,508
	Sep	110,760	109,154	219,914	513,517	347,126	166,391	243,723	269,794
	Oct	110,697	110,268	220,965	514,598	346,519	168,079	244,911	269,687
	Nov	110,630	110,763	221,393	514,823	346,034	168,789	245,455	269,368
	Dec	109,992	110,155	220,147	511,727	343,955	167,772	243,965	267,762
AVERAGE		112,211	109,290	221,500	519,170	351,916	167,254	245,892	273,279
1996	Jan	109,554	111,166	220,720	512,165	342,778	169,387	244,801	267,364
	Feb	109,649	112,813	222,462	515,181	343,314	171,867	246,961	268,220
	Mar	109,364	113,895	223,259	515,676	342,361	173,315	247,695	267,981
	Apr	108,787	114,163	222,950	514,375	340,597	173,778	247,380	266,995
AVERAGE		109,339	113,009	222,348	514,349	342,263	172,087	246,709	267,640

ATP - Authorization to Participate

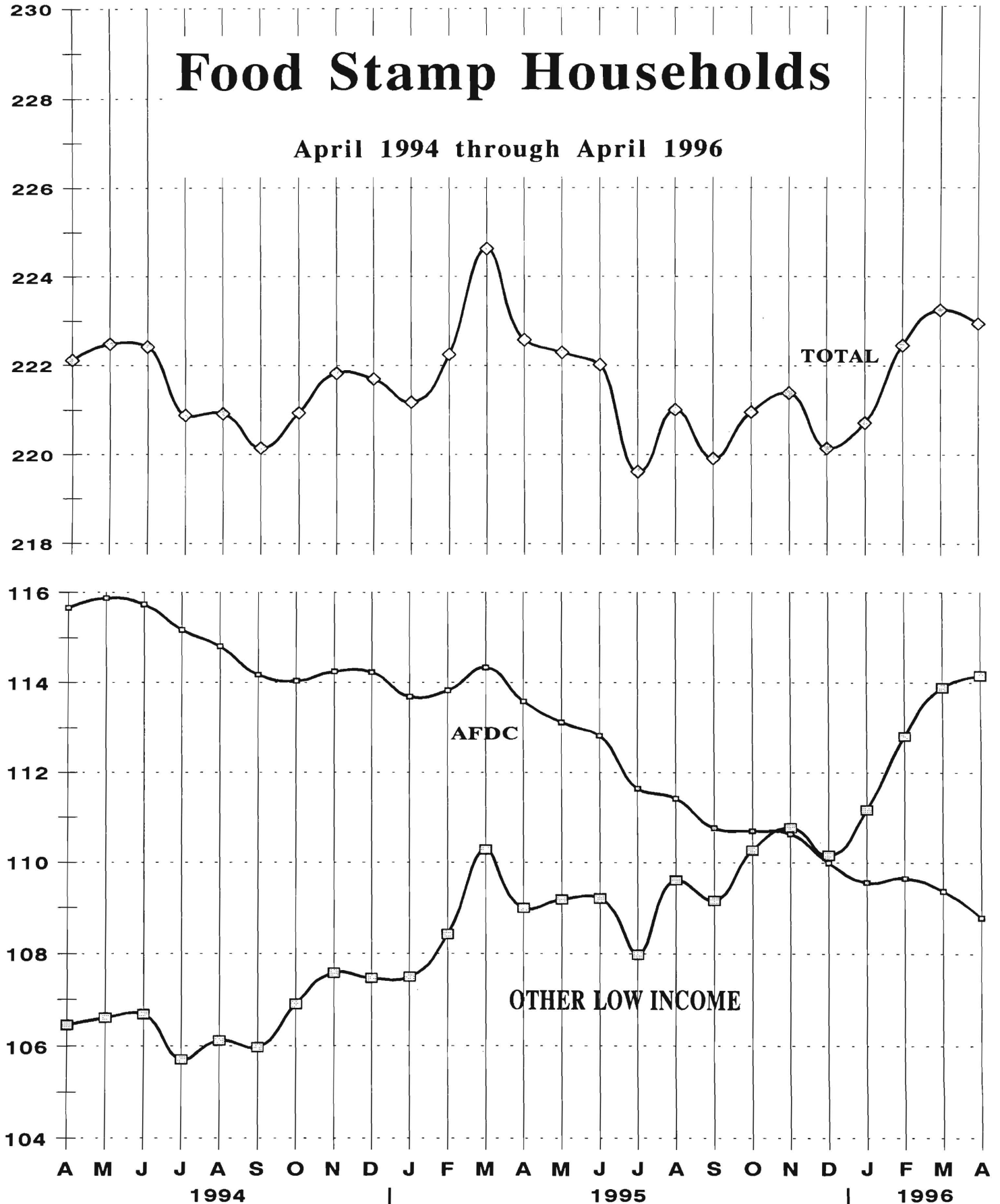
Data Sources: Data is derived from NJ Division of Family Development's FAMIS report # FB-160.

GRAPH 5

Thousands

Food Stamp Households

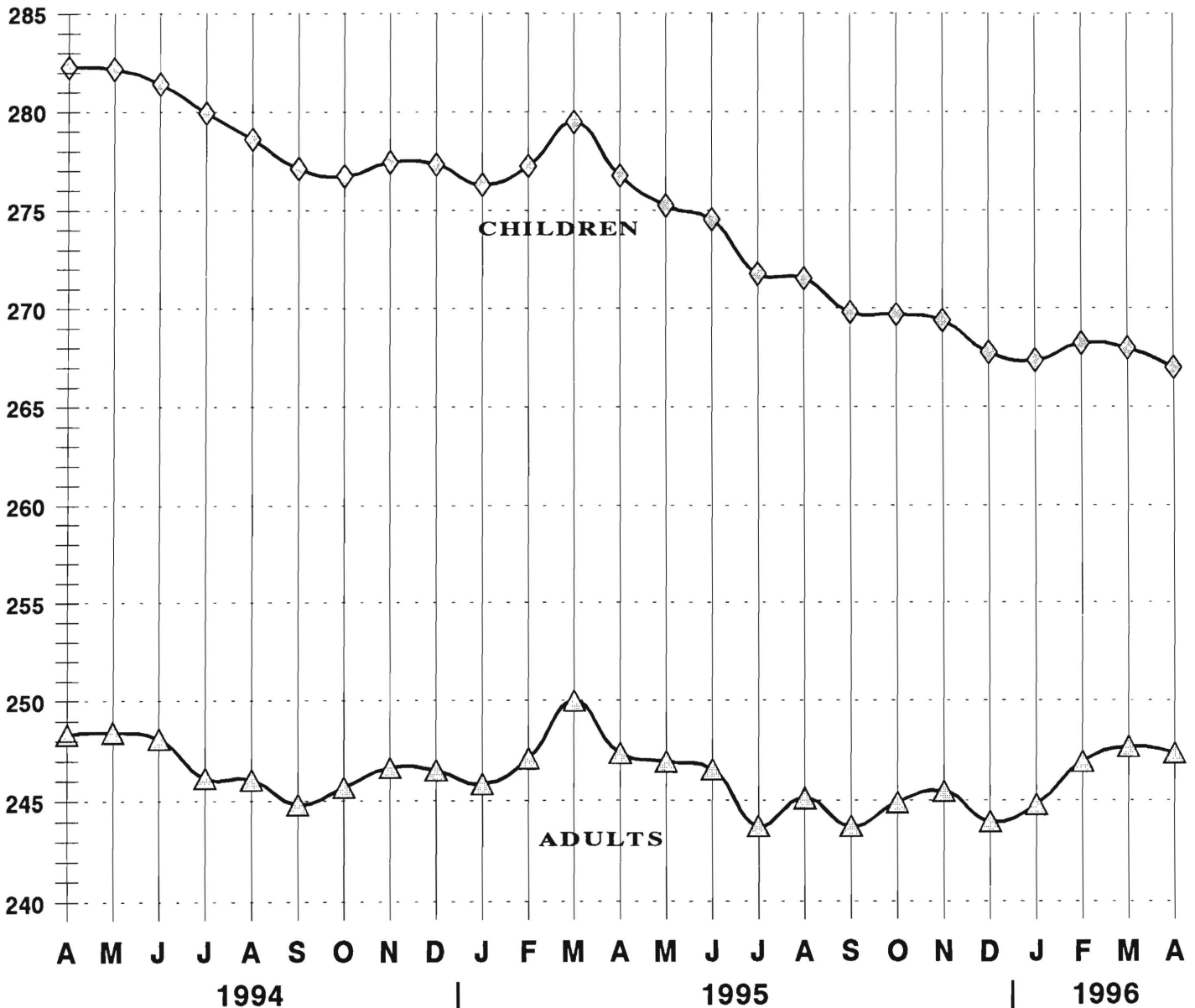
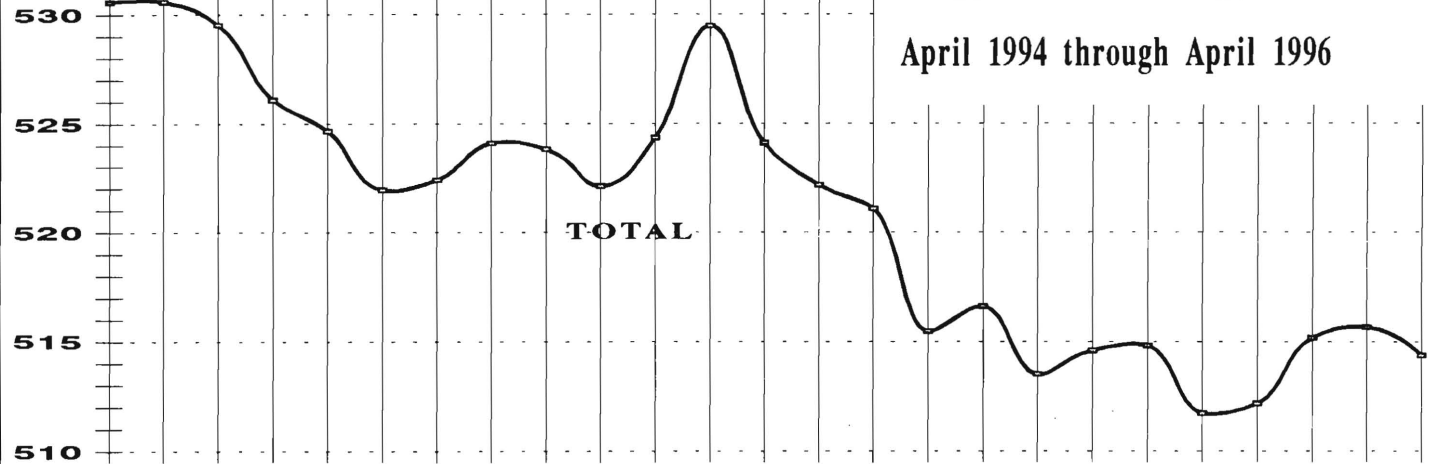
April 1994 through April 1996



Thousands
535

Food Stamp Recipients

April 1994 through April 1996



New Jersey Department of Human Services
Division of Family Development

TABLE 7

EMERGENCY ASSISTANCE Program for AFDC Recipients

State Summary

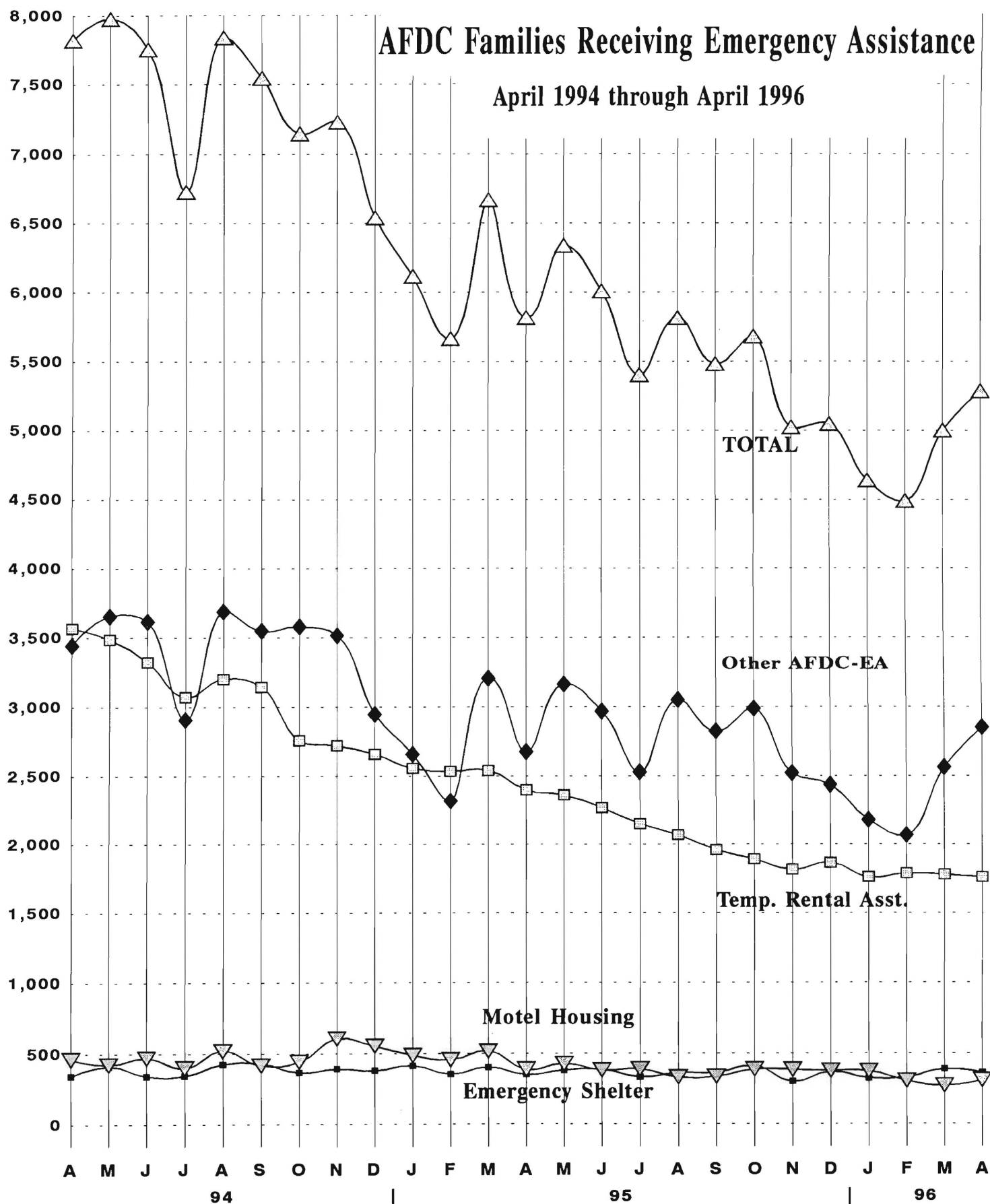
**NUMBER OF ELIGIBLE FAMILIES RECEIVING EMERGENCY ASSISTANCE PAYMENTS
(UNDUPLICATED CASES)
APRIL 1994 through APRIL 1996**

	Total families receiving EA	Temporary rental assist.	Motel Housing	Emergency Shelter	Other AFDC-EA
1994 APR	7,821	3,568	462	345	3,446
MAY	7,977	3,488	423	411	3,655
JUN	7,755	3,326	469	343	3,617
JUL	6,727	3,075	400	344	2,908
AUG	7,840	3,204	520	426	3,690
SEP	7,545	3,147	418	430	3,550
OCT	7,147	2,759	442	366	3,580
NOV	7,231	2,720	604	391	3,516
DEC	6,540	2,658	554	379	2,949
Average (12 mos.)	7,326	3,218	468	379	3,260
1995 JAN	6,115	2,557	487	413	2,658
FEB	5,664	2,535	456	354	2,319
MAR	6,668	2,542	516	402	3,208
APR	5,815	2,402	387	351	2,675
MAY	6,338	2,364	427	381	3,166
JUN	6,007	2,268	382	387	2,970
JUL	5,402	2,149	389	334	2,530
AUG	5,813	2,068	331	362	3,052
SEP	5,482	1,958	336	364	2,824
OCT	5,678	1,891	388	410	2,989
NOV	5,024	1,816	384	302	2,522
DEC	5,048	1,864	377	369	2,438
Average	5,755	2,201	405	369	2,779
1996 JAN	4,639	1,761	374	325	2,179
FEB	4,490	1,788	305	330	2,067
MAR	5,001	1,779	270	388	2,564
APR	5,285	1,760	309	364	2,852
Average	4,854	1,772	315	352	2,416

GRAPH 7

AFDC Families Receiving Emergency Assistance

April 1994 through April 1996

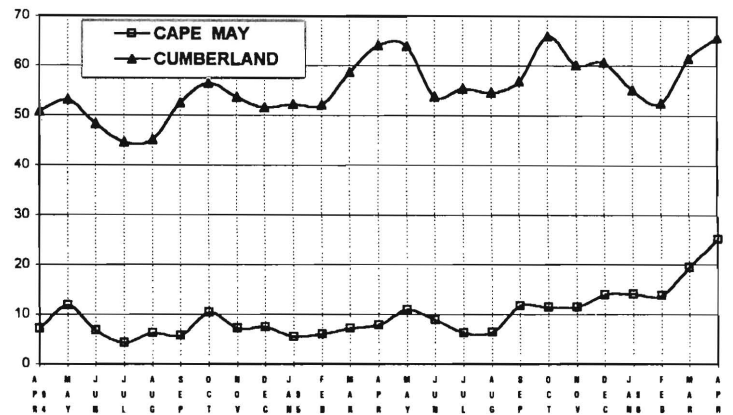
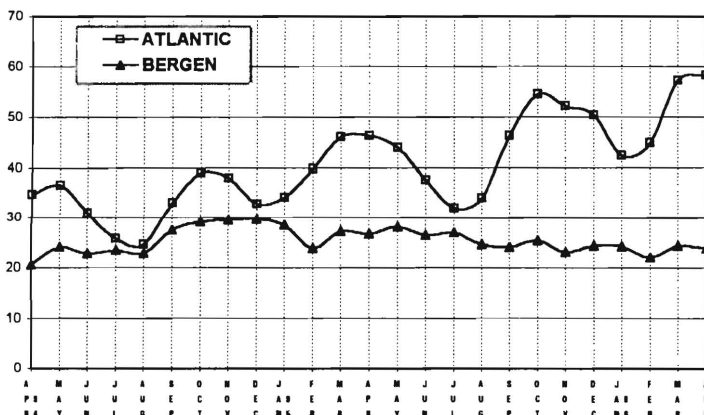
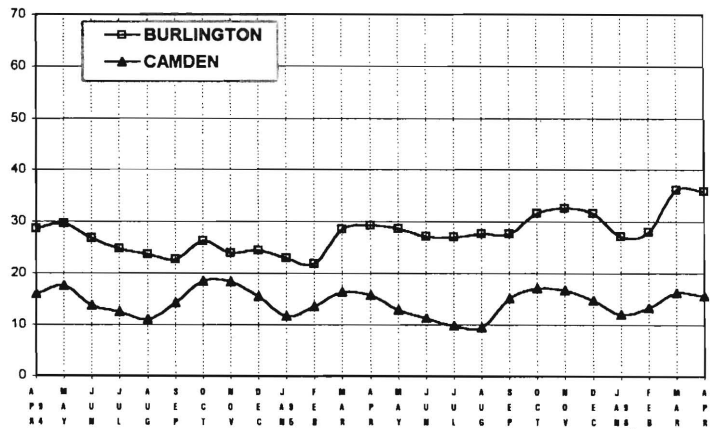
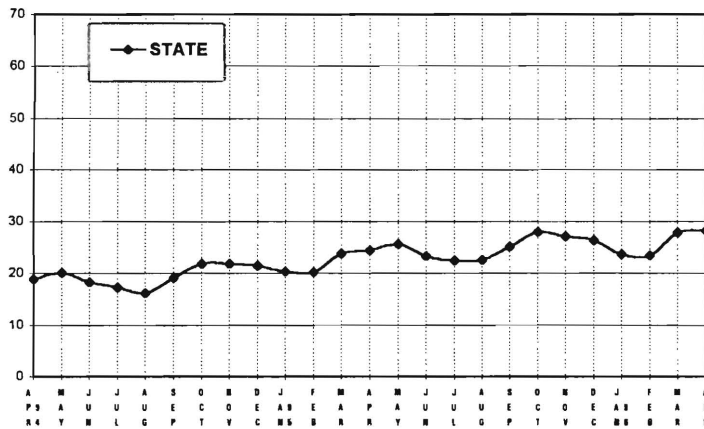


**New Jersey Department of Human Services
Division of Family Development**

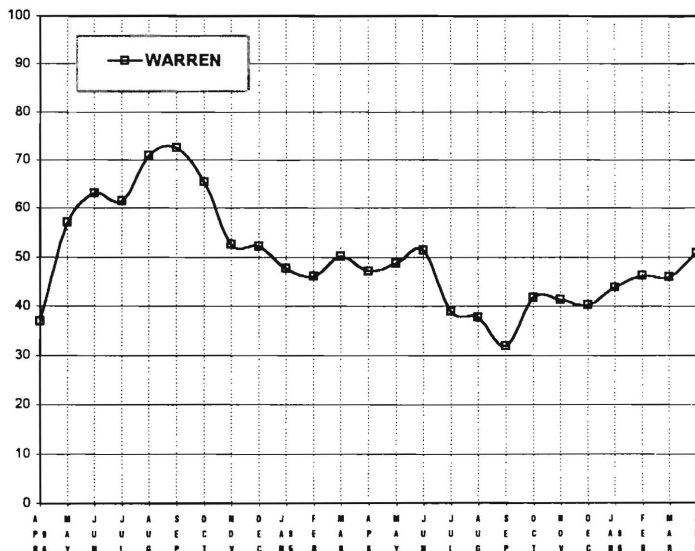
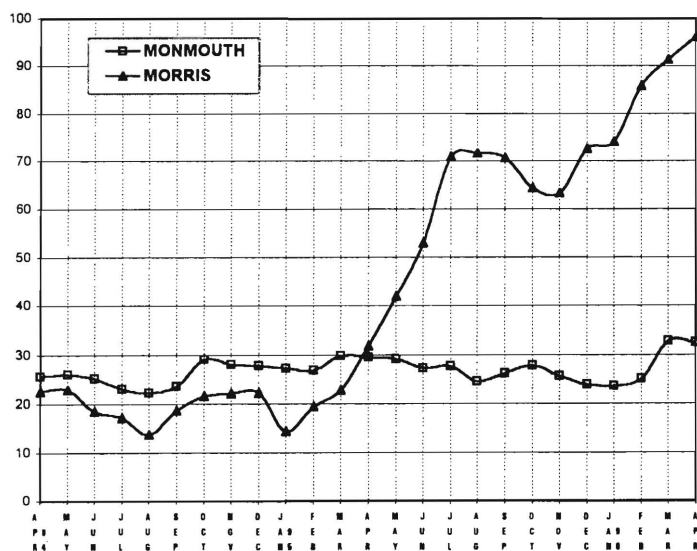
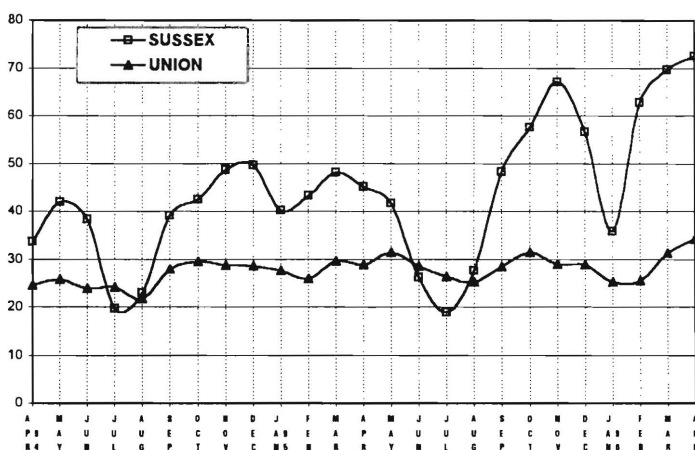
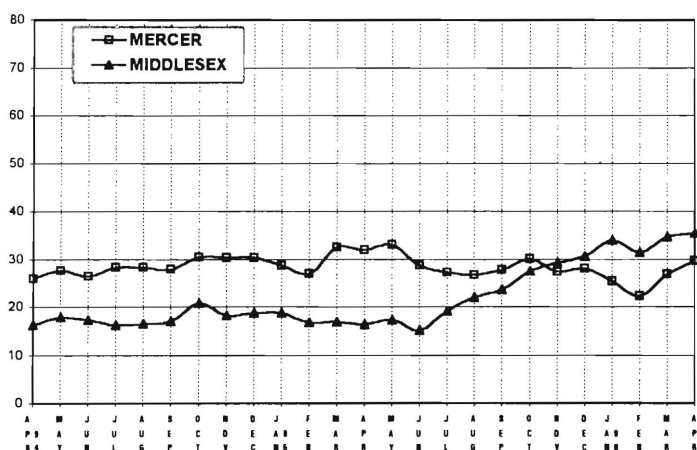
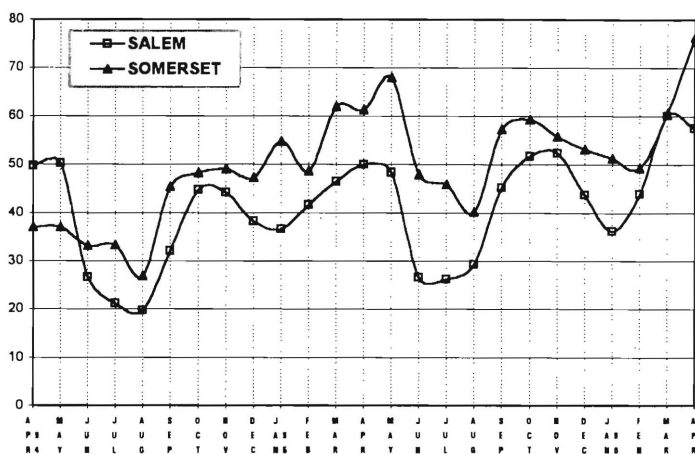
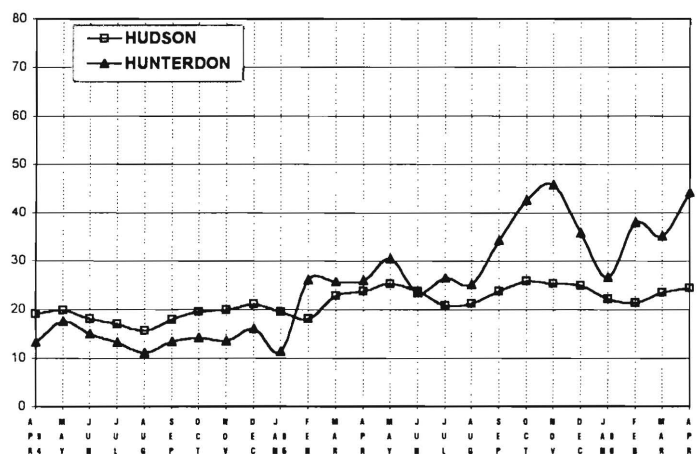
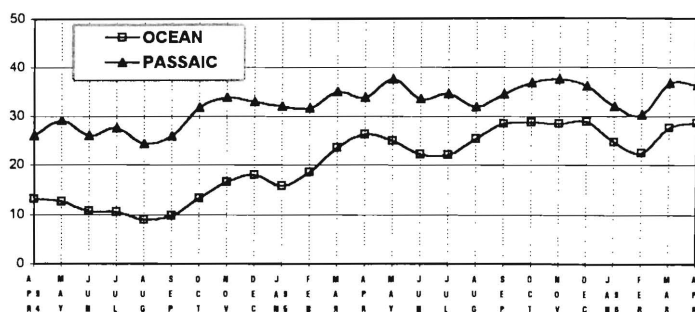
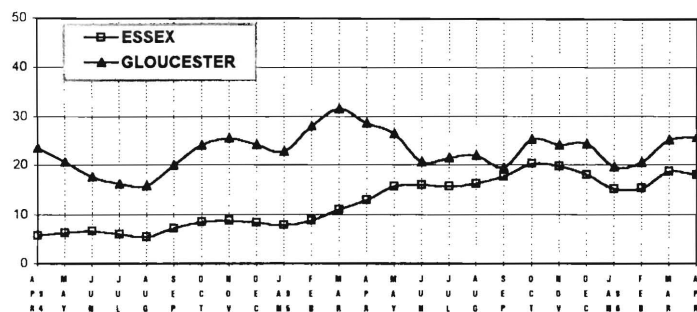
**TABLE 8
JOBS/FDP PARTICIPATION RATES BY MONTH
(PERCENT)**

	STATE	ATLANTIC	BERGEN	BURLINGTON	CAMDEN	CAPE MAY	CUMBERLAND	ESSEX	GLOUCESTER	HUDSON	HUNTERDON	MERCER	MIDDLESEX	MONMOUTH	MORRIS	OCEAN	PASSAIC	SALEM	SOMERSET	SUSSEX	UNION	WARREN
94 APR	18.9	34.7	20.7	28.6	16.0	7.2	50.8	5.7	23.6	19.0	13.3	26.0	16.2	25.7	22.6	13.2	26.0	49.8	37.0	33.7	24.6	37.0
MAY	20.1	36.6	24.2	29.6	17.6	11.8	53.2	6.3	20.7	19.7	17.5	27.6	17.9	26.0	23.1	12.7	29.2	50.3	37.0	42.0	25.8	57.1
JUN	18.3	31.0	22.9	26.8	13.8	6.9	48.3	6.7	17.6	18.1	15.0	26.4	17.4	25.2	18.6	10.8	26.1	26.7	33.2	38.3	23.9	63.0
JUL	17.3	26.0	23.5	24.7	12.6	4.4	44.7	6.0	16.2	17.0	13.3	28.4	16.3	23.2	17.3	10.6	27.7	21.2	33.4	19.7	24.2	61.5
AUG	16.3	24.8	23.0	23.7	11.1	6.3	45.1	5.5	15.8	15.7	11.1	28.3	16.5	22.3	13.7	9.0	24.3	19.8	26.9	23.0	21.8	71.0
SEP	19.1	33.0	27.6	22.7	14.3	5.8	52.5	7.2	20.0	17.9	13.4	27.9	17.1	23.7	18.7	9.9	25.9	32.2	45.4	39.2	27.9	72.5
OCT	21.8	39.0	29.3	26.2	18.5	10.4	56.4	8.5	24.0	19.5	14.2	30.5	20.8	29.2	21.7	13.4	31.9	44.8	48.3	42.6	29.5	65.4
NOV	21.8	38.0	29.7	23.9	18.3	7.3	53.7	8.8	25.5	20.0	13.5	30.4	18.2	28.2	22.2	16.7	33.9	44.2	49.1	48.7	28.7	52.6
DEC	21.5	32.8	29.7	24.4	15.5	7.5	51.5	8.3	24.2	21.1	16.1	30.4	18.8	27.8	22.4	18.1	33.0	38.3	47.4	49.6	28.6	52.2
95 JAN	20.4	34.2	28.6	22.9	11.7	5.5	52.2	7.8	22.8	19.6	11.5	28.7	18.8	27.3	14.4	15.8	32.1	36.7	54.7	40.2	27.7	47.7
FEB	20.3	39.8	23.9	21.8	13.6	6.0	52.1	8.8	28.1	18.1	26.2	27.0	16.8	26.8	19.5	18.6	31.7	41.7	48.7	43.3	26.0	46.1
MAR	23.8	46.1	27.3	28.5	16.3	7.2	58.6	11.0	31.6	22.9	25.8	32.5	16.9	29.9	22.9	23.6	35.1	46.6	62.0	48.2	29.6	50.3
APR	24.5	46.3	26.9	29.2	15.7	7.9	64.1	13.0	28.7	23.8	26.1	31.9	16.3	29.6	31.9	26.4	33.9	50.0	61.3	45.3	28.9	47.2
MAY	25.7	44.0	28.3	28.6	12.9	10.9	64.0	15.7	26.4	25.4	30.6	33.1	17.4	29.1	42.0	25.0	37.7	48.4	68.0	41.7	31.4	48.7
JUN	23.3	37.7	26.5	27.1	11.3	9.0	53.8	16.0	20.7	23.8	23.5	28.7	15.1	27.2	52.9	22.3	33.6	26.7	48.1	26.1	28.6	51.5
JUL	22.5	31.9	27.0	26.9	9.8	6.3	55.3	15.8	21.5	20.8	26.6	27.3	19.2	27.7	71.0	22.1	34.7	26.3	46.1	19.0	26.3	38.9
AUG	22.6	33.9	24.8	27.7	9.5	6.5	54.6	16.2	22.0	21.2	25.2	26.7	22.0	24.5	71.7	25.4	32.0	29.4	40.3	27.7	25.2	37.8
SEP	25.2	46.4	24.2	27.6	15.1	11.7	56.9	17.7	19.5	23.8	34.3	27.8	23.6	26.2	70.7	28.6	34.5	45.3	57.3	48.4	28.4	32.0
OCT	27.9	54.6	25.5	31.5	17.1	11.4	65.9	20.2	25.3	26.0	42.7	30.1	27.5	27.8	64.4	28.9	37.0	51.7	59.3	57.5	31.4	41.7
NOV	27.2	52.2	23.1	32.5	16.8	11.5	60.2	19.7	24.1	25.4	45.8	27.4	29.3	25.6	63.3	28.6	37.6	52.4	55.8	67.2	29.0	41.3
DEC	26.4	50.3	24.5	31.5	14.8	13.9	60.6	18.1	24.4	25.0	35.9	28.0	30.6	23.9	72.6	28.9	36.2	43.9	53.2	56.7	28.8	40.3
96 JAN	23.7	42.5	24.3	27.1	12.0	14.1	55.1	15.2	19.7	22.2	26.7	25.3	34.0	23.6	74.1	24.8	32.1	36.3	51.3	35.8	25.2	43.8
FEB	23.5	44.9	22.2	27.9	13.3	13.9	52.6	15.3	20.5	21.5	38.0	22.3	31.5	25.1	85.9	22.6	30.4	43.9	49.4	62.9	25.5	46.3
MAR	27.8	57.3	24.5	36.2	16.2	19.4	61.5	18.7	25.1	23.5	35.2	26.9	34.6	32.8	91.4	27.6	36.8	60.2	60.6	69.6	31.3	45.9
APR	28.3	58.3	24.0	35.9	15.7	25.1	65.6	18.1	25.7	24.4	44.3	29.7	35.5	32.5	96.2	28.6	36.4	57.6	76.4	72.6	34.2	50.9

**GRAPH 8
JOBS/FDP PARTICIPATION RATES (%)**



GRAPH 8 (CONTINUED)
JOBS/FDP PARTICIPATION RATES (%)



New Jersey Department of Human Services
Division of Family Development

TABLE 9
GENERAL ASSISTANCE Program
State Summary

**NUMBER OF EMPLOYABLE AND UNEMPLOYABLE
RECIPIENTS DURING REPORT MONTH**
October 1993 through October 1995

	Number of Persons Aided		
	Employables	Unemployables	Total
1993 Oct	23,853	11,455	35,308
Nov	23,668	11,324	34,992
Dec	24,435	11,374	35,809
AVERAGE (12 mos)	24,250	11,374	35,624
1994 Jan	24,992	11,062	36,054
Feb	25,600	11,202	36,802
Mar	26,397	11,719	38,116
Apr	25,512	11,629	37,141
May	25,327	12,212	37,539
Jun	24,814	12,190	37,004
Jul	23,884	12,261	36,145
Aug	23,671	12,018	35,689
Sep	23,075	11,825	34,900
Oct	23,031	11,950	34,981
Nov	23,046	12,045	35,091
Dec	23,142	11,642	34,784
AVERAGE	24,486	11,828	36,315
1995 Jan	24,262	11,537	35,799
Feb	23,219	11,264	34,483
Mar	23,855	11,976	35,831
Apr	23,337	12,082	35,419
May	22,046	11,527	33,573
June	21,575	11,738	33,313
July	21,000	11,391	32,391
August	21,526	10,829	32,355
September	21,525	10,389	31,914
October	21,913	10,959	32,872
AVERAGE	22,426	11,369	33,795

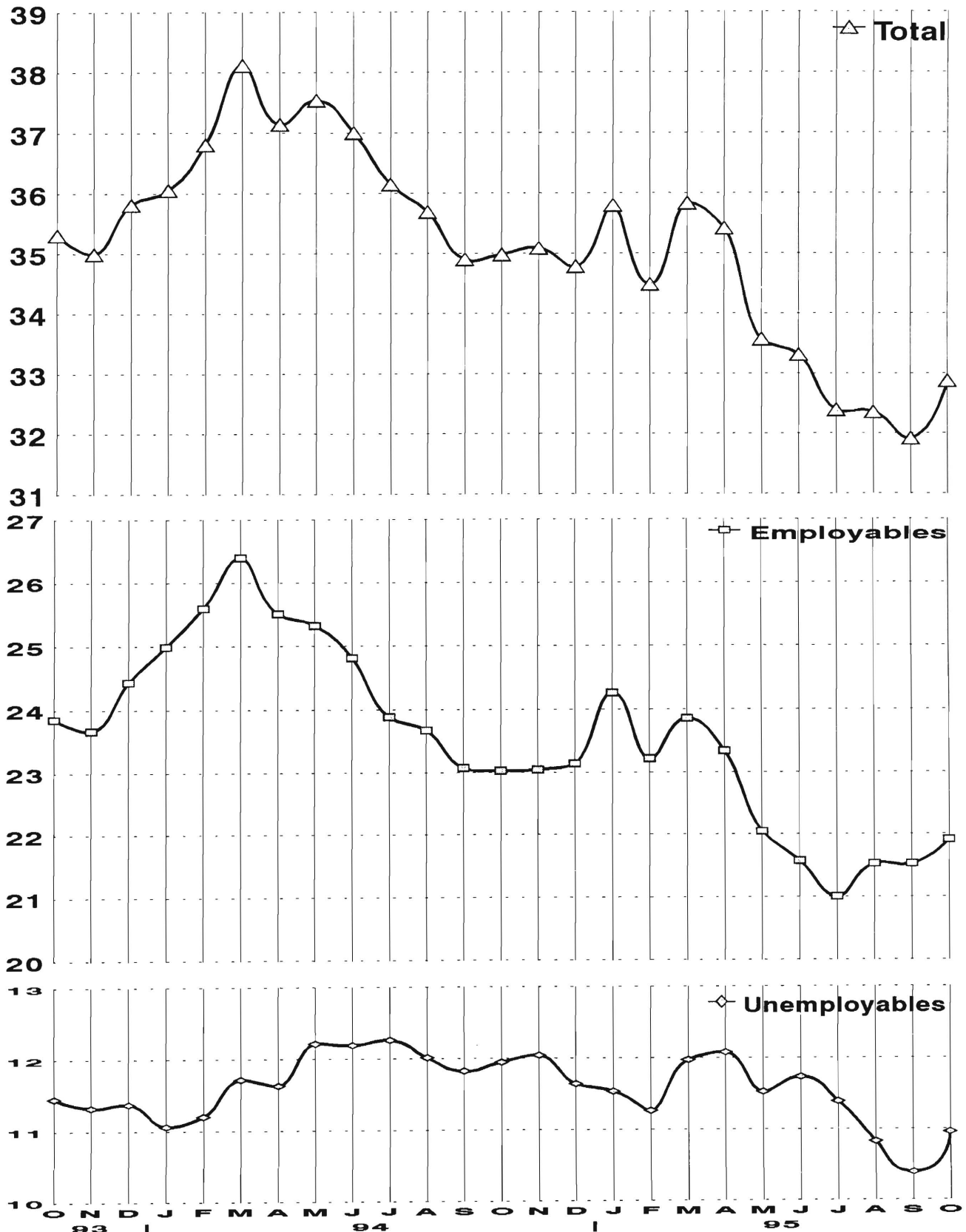
Data Sources: Data is derived from NJ Division of Family Development

GRAPH 9

General Assistance Recipients

October 1993 through October 1995

Thousands



New Jersey Department of Human Services
Division of Family Development

TABLE 10

CHILD SUPPORT AND PATERNITY COLLECTIONS

State Summary

\$1000's

COLLECTION SOURCE	State Fiscal Years			Most Recent Nine Months		
	1994	1995	% change	7/94-3/95	7/95-3/96	% change
AFDC & FOSTER CARE						
Federal Tax	\$15,255	\$15,664	2.7%	\$2,549	\$7,982	213.1%
State Tax	1,970	1,762	-10.6%	1,440	1,558	8.2%
Unempl. Ins. Ben.	4,975	3,867	-22.3%	2,566	3,922	52.9%
Income Withholding	43,219	45,262	4.7%	33,715	32,836	-2.6%
Other/Own Behalf	18,138	18,431	1.6%	13,726	11,795	-14.1%
From Other States	3,621	3,429	-5.3%	2,577	2,472	-4.1%
For Other States	5,269	6,873	30.5%	5,104	5,585	9.4%
TOTAL COLLECTION	\$92,447	\$95,289	3.1%	\$61,678	\$66,151	7.3%
NON-AFDC						
Federal Tax	\$6,547	\$6,822	4.2%	\$1,544	\$4,197	171.9%
State Tax	2,210	2,044	-7.5%	1,700	1,989	17.1%
Unempl. Ins. Ben.	15,110	13,338	-11.7%	9,191	13,410	45.9%
Income Withholding	214,405	251,694	17.4%	185,025	190,383	2.9%
Other/Own Behalf	144,715	156,899	8.4%	117,329	99,470	-15.2%
From Other States	19,969	20,835	4.3%	15,470	15,205	-1.7%
For Other States	20,015	27,338	36.6%	20,241	21,110	4.3%
TOTAL COLLECTION	\$422,970	\$478,969	13.2%	\$350,499	\$345,764	-1.4%
TOTAL						
Federal Tax	\$21,802	\$22,486	3.1%	\$4,093	\$12,179	197.6%
State Tax	4,179	3,806	-8.9%	3,140	3,547	13.0%
Unempl. Ins. Ben.	20,085	17,205	-14.3%	11,757	17,332	47.4%
Income Withholding	257,624	296,957	15.3%	218,741	223,219	2.0%
Other/Own Behalf	162,853	175,329	7.7%	131,055	111,266	-15.1%
From Other States	23,590	24,264	2.9%	18,047	17,678	-2.0%
For Other States	25,284	34,211	35.3%	25,346	26,695	5.3%
TOTAL COLLECTION	\$515,417	\$574,258	11.4%	\$412,177	\$411,915	-0.1%

Collection Source: Reflects Collections Recorded by County Probation Departments

Explanatory Notes

The Department of Human Services Division of Family Development provides basic income and an opportunity to achieve self-sufficiency for individuals and families served by the Division's programs. The Division provides leadership, direction and supervision to those public agencies responsible for administering those programs and plans for and develops policies to promote self-sufficiency.

AID TO FAMILIES WITH DEPENDENT CHILDREN (AFDC) - Financial assistance for dependent children and their natural or adoptive parents, or certain other relatives recognized as taking the place of a parent.

Regular AFDC (C Segment) - assistance when only one parent is in the home due to death or absence, or both parents are in the home but at least one is incapacitated.

Unemployed Parents (F Segment) - assistance when both parents are in the home, neither is incapacitated and the primary wage earner meets the federally defined criteria for unemployment.

State AFDC (N Segment) - assistance when both parents are in the home, neither is incapacitated, and the primary wage earner does not meet the federal definition of unemployment.

Medicaid Only - families no longer receiving AFDC financial assistance but remaining eligible for Medicaid under applicable provisions which extend coverage beyond period of AFDC assistance.

FOOD STAMP PROGRAM (FS) - Authorized by Congress as a nutritional supplement program to provide low income households with more food of greater variety and better nutrition. Program eligibility is based on household income, resources, and expenses for medical, shelter, and dependent care. CWA staff refer certain recipients to the New Jersey Department of Labor for participation in the Food Stamp Employment and Training Program.

EMERGENCY ASSISTANCE (EA) - Payments to those eligible for AFDC (also for Supplemental Security Income, or for General Assistance which is not included here), authorized during the 30 consecutive days immediately following the emergency (defined as a substantial loss of shelter, food, clothing, or household furnishings by fire, flood or other similar disaster) or if the eligible individual or family is in an imminent or actual state of homelessness.

JOBS/FDP

JOB OPPORTUNITY AND BASIC SKILLS PROGRAM (JOBS) - Federally mandated work/training program for recipients of AFDC established by the Family Support Act of 1988 under Part F of Title IV of the Social Security Act.

FAMILY DEVELOPMENT PROGRAM (FDP) - Reform legislation enacted by the State Legislature in January 1992 to: build, strengthen, and support the family unit; encourage family formation; reduce the long-term aspects of welfare dependency; look to the needs of the family unit as a whole; emphasize education and training for all family members; maximize use of educational, training and employment resources; and develop genuine private sector job opportunities.

SNAPSHOT OF ACTIVITY AT POINT IN TIME - Status of activities as of the end of the month:

Total Non-Exempt JOBS/FDP Recipients - Calculation of the number of mandatory IV-F individuals (FAMIS report # FB304).

Employment Directed Activities (EDA) - From Activities Summary Report (OMEGA report # RM064). Unduplicated count of persons participating in **Training, Education, or Job Search**.

Participants in EDA, Receiving Support Services - From Issuance Disbursement Summary (OMEGA report # RM703). Total number of active participants who show receipt of **Training Related Expenses** or **Child Care**.

Participation Rate (JOBS/FDP) - Federally mandated calculation method, dividing the number of participants whose combined and averaged weekly hours of participation in qualifying activities equals or exceeds 20 hours per week by the total number of non-exempt IV-F recipients. As of the end of the month.

ACTIVITY FOR THE MONTH - Number of participants with the indicated activity during the month:

Participants with First Case Management Interview - From Activities Summary Report (OMEGA report # RM064).

Number of Persons Employed This Month, Still Receiving AFDC - From Activities Summary Report (OMEGA report # RM064).

Number of Persons Closed on FAMIS Due to Earnings - From FAMIS report # FM463.

Post AFDC and Receiving Child Care - Persons no longer in receipt of AFDC, but still receiving child care. From Issuance Disbursement Summary (OMEGA report # RM703).

New Jersey Department of Human Services
Division of Family Development

TABLE 11
GENERAL ASSISTANCE Program

NUMBER OF EMPLOYABLE AND UNEMPLOYABLE RECIPIENTS
DURING REPORT MONTH
COUNTIES AND 21 LARGEST MUNICIPALITIES

October 1995

County	Employables	Unemployables	Total	Municipality	Employables	Unemployables	Total
ATLANTIC	885	487	1,372	Atlantic City	701	274	975
BERGEN	537	461	998	Mount Holly	163	90	253
BURLINGTON	538	392	930	Camden	1,141	639	1,780
CAMDEN	1,519	1,346	2,865	Vineland	206	125	331
CAPE MAY	104	74	178	East Orange	570	422	992
CUMBERLAND	382	212	594	Irvington	60	13	73
ESSEX	8,117	2,171	10,288	Montclair	187	91	278
GLOUCESTER	150	158	308	Newark	6,804	1,426	8,230
HUDSON	1,138	1,220	2,358	Orange	387	66	453
HUNTERDON	44	45	89	Bayonne	111	50	161
MERCER	1,891	742	2,633	Hoboken	142	117	259
MIDDLESEX	534	543	1,077	Jersey City	613	522	1,135
MONMOUTH	764	682	1,446	Trenton	1,754	639	2,393
MORRIS	123	208	331	Perth Amboy	125	109	234
OCEAN	671	417	1,088	Asbury Park	214	107	321
PASSAIC	2,331	681	3,012	Long Branch	196	108	304
SALEM	127	80	207	Lakewood	296	112	408
SOMERSET	90	112	202	Passaic	633	279	912
SUSSEX	50	40	90	Paterson	1,554	224	1,778
UNION	1,859	832	2,691	Elizabeth	1,161	468	1,629
WARREN	59	56	115	Plainfield	272	137	409
NJ TOTAL	21,913	10,959	32,872	NJ TOTAL	17,290	6,018	23,308