

August 2023 Traffic Report

AVIATION DEPARTMENT (Data As Of 10/5/2023 5:06:37 PM)

REGION



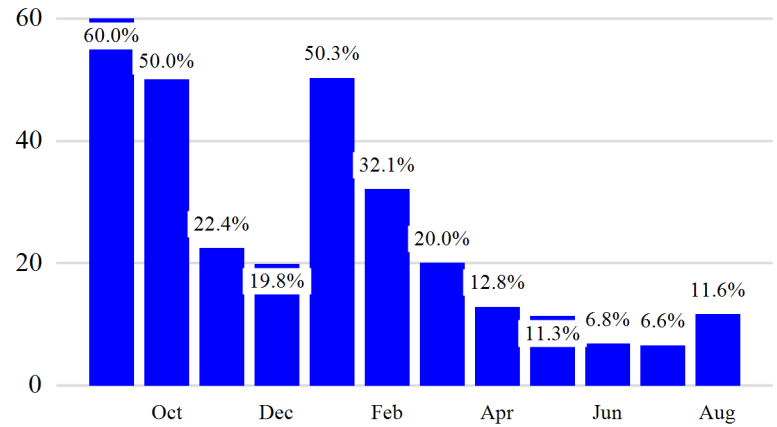
Revenue Passengers

	Curr Month	% Change
	13,544,976	11.6% ▲
Domestic	8,450,015	7.9%
International	5,094,961	18.4%
Non-Revenue	314,134	-6.2%

Load Factors	Curr Month
Domestic	86.4%
International	88.1%

87.0% Avg Load Factor

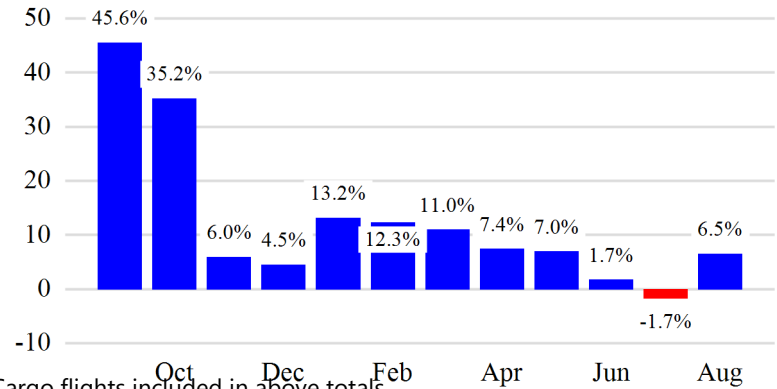
Year over Year % Change in Revenue Passengers - 12 Months



Total Flights

	Curr Month	% Change
	113,475	5.2% ▲
Excl GA	107,673	6.5% ▲
Domestic	78,257	2.4%
International	29,416	19.3%
Gen Aviation	5,802	-15.0%
Cargo Flights*	3,517	1.4%

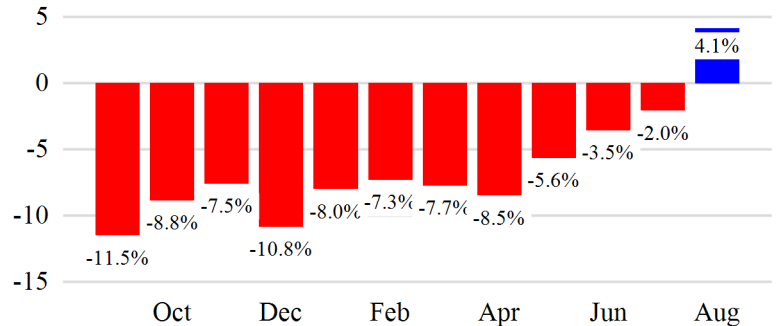
Year over Year % Change in Total Flights (Excl GA) - 12 Months



Cargo (Short Tons)

	Curr Month	% Change
	201,398	4.1% ▲
Domestic	86,860	7.7%
International	114,538	1.5%
Mail	7,351	-36.0%

Year over Year % Change in Cargo - 12 Months



Top 5 Declines in Revenue Passengers by Airline

Airline	Pax Decline	% Decline
AMERICAN	(20,892)	-1.0%
FINNAIR	(11,776)	-43.0%
JETBLUE AIRWAYS	(11,025)	-1.0%
SINGAPORE AIRLINES	(9,412)	-22.0%
WESTJET	(6,277)	-27.0%

Top 5 Increases in Revenue Passengers by Airline

Airline	Pax Increase	% Increase
DELTA	453,814	17.0%
UNITED	440,561	16.0%
Air Canada	61,767	49.0%
SPIRIT AIRLINES	60,903	16.0%
BRITISH AIRWAYS	45,163	40.0%

Airport Summary Statistics

JFK Summary

	Current Month	YoY %
Total Revenue Pax	6,009,864	10.0
Total Flights Including GA	42,982	6.0
Total Cargo (Short Tons)	140,022	6.5

EWR Summary

	Current Month	YoY %
Total Revenue Pax	4,551,534	13.0
Total Flights Including GA	37,111	7.0
Total Cargo (Short Tons)	58,663	-1.3

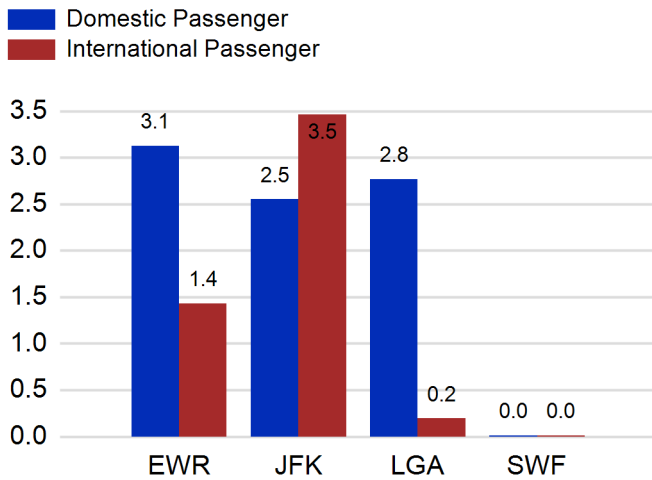
LGA Summary

	Current Month	YoY %
Total Revenue Pax	2,961,391	12.0
Total Flights Including GA	30,939	4.0
Total Cargo (Short Tons)	497	-4.0

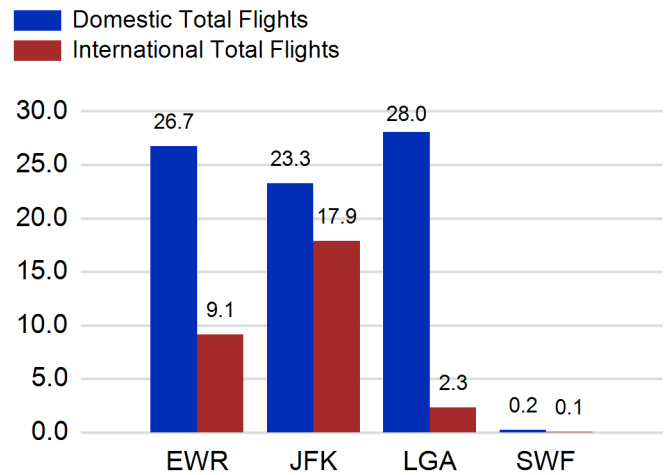
SWF Summary

	Current Month	YoY %
Total Revenue Pax	22,187	-33.0
Total Flights Including GA	2,443	-27.0
Total Cargo (Short Tons)	2,217	10.5

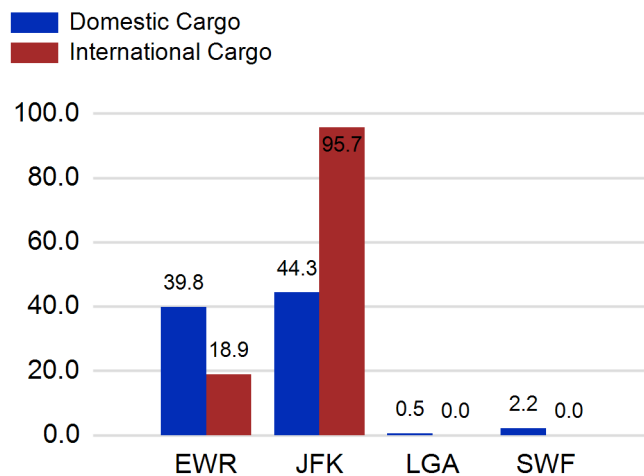
Total Passengers by Airport (Millions)



Total Flights by Airport (Thousands)



Total Cargo by Airport (Thousands of Short Tons)



12 Months Ending Passenger & Freight Statistics

Top 20 Airlines Ranking by Passengers & Freight: 12 Months Ending Aug 2023

Airline Name	Domestic	International	Total Pax	% of Tot	Airline Name	Short Tons	% of Tot
UNITED	26,992,048	7,871,014	34,863,062	24.59%	FEDERAL EXPRESS	374,392	16.65%
DELTA	26,355,109	6,058,502	32,413,611	22.87%	UNITED PARCEL	196,776	8.75%
JETBLUE AIRWAYS	16,129,735	6,499,987	22,629,722	15.96%	UNITED	179,362	7.98%
AMERICAN	14,114,699	3,649,935	17,764,634	12.53%	DELTA	97,589	4.34%
SPIRIT AIRLINES	4,506,331	0	4,506,331	3.18%	KALITTA AIR LLC	90,923	4.04%
SOUTHWEST AIRLINES	3,130,926	0	3,130,926	2.21%	AMERICAN	86,564	3.85%
ALASKA AIRLINES	2,431,909	0	2,431,909	1.72%	AIR TRANSPORT INT'L.(BAX Inc.)	71,333	3.17%
AIR CANADA	0	1,672,204	1,672,204	1.18%	ATLAS AIR	66,236	2.95%
BRITISH AIRWAYS	0	1,573,615	1,573,615	1.11%	ABX AIR INC	55,737	2.48%
AIR FRANCE	313	1,199,604	1,199,917	0.85%	BRITISH AIRWAYS	50,424	2.24%
EMIRATES AIRLINES	0	1,076,265	1,076,265	0.76%	KOREAN	50,238	2.23%
VIRGIN ATLANTIC	0	980,637	980,637	0.69%	CARGOLUX AIRLINES	49,031	2.18%
LUFTHANSA	0	834,089	834,089	0.59%	CHINA AIRLINES (CAL)	45,836	2.04%
Avianca Costa Rica	0	812,821	812,821	0.57%	CATHAY PACIFIC	45,550	2.03%
AER LINGUS	0	740,464	740,464	0.52%	VIRGIN ATLANTIC	36,078	1.60%
TURKISH AIR	0	733,470	733,470	0.52%	LUFTHANSA CARGO	32,624	1.45%
EL AL	0	576,754	576,754	0.41%	ASIANA	31,059	1.38%
LAN AIRLINES	0	542,887	542,887	0.38%	EVA	30,248	1.35%
IBERIA	0	533,601	533,601	0.38%	AIR FRANCE	30,121	1.34%
SAS	0	527,587	527,587	0.37%	AIR CHINA (CARGO)	28,350	1.26%

Passengers & Freight by Market - 12 Months Ending

Market	Passengers	Freight (Short Tons)
TRANSATLANTIC	25,706,535	835,969
CANADA	4,021,366	7,702
CARIBBEAN + BERMUDA	8,249,265	11,825
CENTRAL AND SOUTH AMERICA	4,187,124	60,923
DOMESTIC	92,265,429	951,200
MEXICO	2,437,295	12,739
TRANSPACIFIC	2,410,625	360,303
PUERTO RICO	2,473,382	8,215

Additional Data

Airline Schedules (ADI): Non-Stop Destinations

	Region	Flights (Daily)	Cities
Domestic	Domestic	2414.0	112
	Puerto Rico	41.1	3
	Total	2,455.0	115.00
International	Canada	189.3	8
	Caribbean & Bermuda	177.0	23
	Central & South America	79.6	18
	Mexico	44.5	6
	Transatlantic	405.5	66
	Transpacific	34.8	11
	Total	930.6	132.00
Total	3,385.7	247.00	

Airline Schedules (ADI): Carriers & Aircraft Type

	Aircraft Type	Flights (Daily)	Carriers
Domestic	Commuter	909.4	4
	Narrow Body	1489.2	10
	Wide Body	56.5	4
	Total	2,455.0	18.00
International	Commuter	161.1	5
	Narrow Body	360.8	22
	Wide Body	408.7	58
	Total	930.6	85.00
Total	Total	3,385.7	103.00

Passenger Demographics (ACI ASQ Surveys - 2021)

Connect		Trip Type		Gender	
Local Origin/Destination	78.6%	Business	14.0%	M	49.6%
Connecting	21.4%	Leisure	86.0%	F	50.4%
Transport Mode		Annual Flights		Residency	
Bus/Shuttle	4.7%	1-2	61.5%	United States	81.0%
Other	18.7%	3-5	24.9%	Other	19.0%
Private/Company Car	37.5%	6-10	9.0%		
Rail/Subway	7.3%	11-20	2.8%		
Rental Car	4.6%	21+	1.8%		
Taxi/Limo	27.2%				

Ground Transportation

	Curr Month	% Change		Curr Month	% Change
<i>Paid Parked Cars</i>	388,604	-11.8	<i>Total Air Train Passengers</i>	2,765,160	5.7
<i>GTC Bookings</i>	0		<i>Paid Howard Beach Passengers</i>	145,395	-5.5
<i>Airport Coach Passengers</i>	35,609	5.0	<i>Paid Jamaica Passengers</i>	468,626	-1.3
<i>Taxis Dispatched</i>	336,265	-9.4	<i>Paid EWR Passengers</i>	225,294	11.5
			<i>On-Airport (Unpaid) Passengers</i>	1,925,845	7.8

Airlines for American Carriers (USA)

	Curr Month	% Change
<i>Freight:revenue ton miles (000)</i>	0	

Regional Airports: Other

	Curr Month	% Change
<i>TEB flight movements</i>	12,640	16.1
<i>ISP Total passengers</i>	124,676	18.7
<i>HPN Total passengers</i>	190,407	10.1