

# New Jersey *Outdoors*

**April 1970**



# Future Trout Fishing In New Jersey

By Robert A. Hayford  
Chief, Bureau of Fisheries Management

**Trout fishermen** in New Jersey should be optimistic about future trout fishing opportunity in the Garden State. The basis for this optimism is located in the Division of Fish and Game's Council. Recently they assigned to the Freshwater Fisheries Committee the task of reviewing present trout propagation and stocking practices. This is being done with the cooperation of the Bureau of Fisheries personnel who are responsible for the supervision of propagation and stocking. Initially, written recommendations from the Bureau staff were submitted. These recommendations were then reviewed. Special assignments were then given for more detailed study on specific questions. Extensive study of the present quantity and quality of water that is available at Hackettstown and Pequest is to be made. An attempt will be made to predict what the water conditions will be in future years.

With all this information at hand, it can then be decided how far modernization at Hackettstown should go and just what should be done at Pequest. This review may indicate that other sites should be considered. All this should add to an increase in the size and number of trout that will be available for stocking in the future.

A study of our present trout stocking program will be made. Both the environment the trout are stocked in and the number, size, and frequency of stocking will be reviewed and brought up to date with 1970 conditions. Out of this should come an improved stocking program.

In addition to the above, the public's awareness of the seriousness of the pollution problem has resulted in a stepped up stream pollution abatement program by other state agencies, as well as at the Federal and local level. This should result in holding the line in some areas and improvement in others. A final statement and perhaps the most important: it is not only desirable but absolutely necessary, when the Council makes its recommendations that will improve the fishermen's trout program, that the Council have the fishermen's support.

#

## State of New Jersey

William T. Cahill  
Governor

Department of Conservation  
and Economic Development

Division of Fish and Game

L. G. MacNamara  
Director

### Fish and Game Council

Fred Space, Chairman  
Sussex ('71)

Joseph L. Alampi,  
Franklinville ('71)

Ralph Allocca,  
Colts Neck ('71)

Raymond Baker,  
Deans ('73)

Randle N. Faunce,  
Delanco ('70)

G. Albert Reid,  
Linwood ('70)

Raymond T. Richardson,  
Pt. Monmouth ('72)

Joseph Schollenberger,  
Holmdel ('72)

James V. Stabile,  
Mendham ('73)

Al Toth,  
North Brunswick ('72)

Charles E. Webber,  
Westwood ('73)

### Public Relations

William E. Peterman,  
Supervisor

### Law Enforcement

Newman Mathis,  
Chief—Coastal Patrol

### Wildlife Management

George N. Alpaugh,  
Chief of the Bureau  
Oscar Sussman, D.V.M.,  
Veterinary Consultant

### Fisheries Management

Robert A. Hayford,  
Chief of the Bureau



Published monthly by the State of New Jersey Division of Fish and Game  
in the interest of conservation and restoration of wildlife and  
the betterment of hunting and fishing in New Jersey.

### In This Issue

Future Trout Fishing	Inside Front Cover
The Golden Gift	3
An Encounter	10
Where the Trout Are	14
Pignut Hickory	20
What's in a Line	21
Car-kill of Animals	22
Speeds of Game Fish	23
The Bald Eagle	24
Thoughts on Poison Ivy	25
Trophy Deer Listings	26
Violators Roundup	28
Council Highlights	31
Port Republic Tract	32
Fur, Fin and Campfire	Inside Back Cover

### Cover—"Golden Rainbow Trout"—Harry Grosch

The golden rainbow trout is a relatively recent product of the Charles O. Hayford Fish Hatchery in Hackettstown, as a result of cooperation between agencies and individuals. For more on this unique trout, now popular in New Jersey, see page 3.

Vol. 20, No. 10

April, 1970

Publication Office: The Division of Fish and Game  
P. O. Box 1809, Trenton, New Jersey 08625

Editor: R. Adams

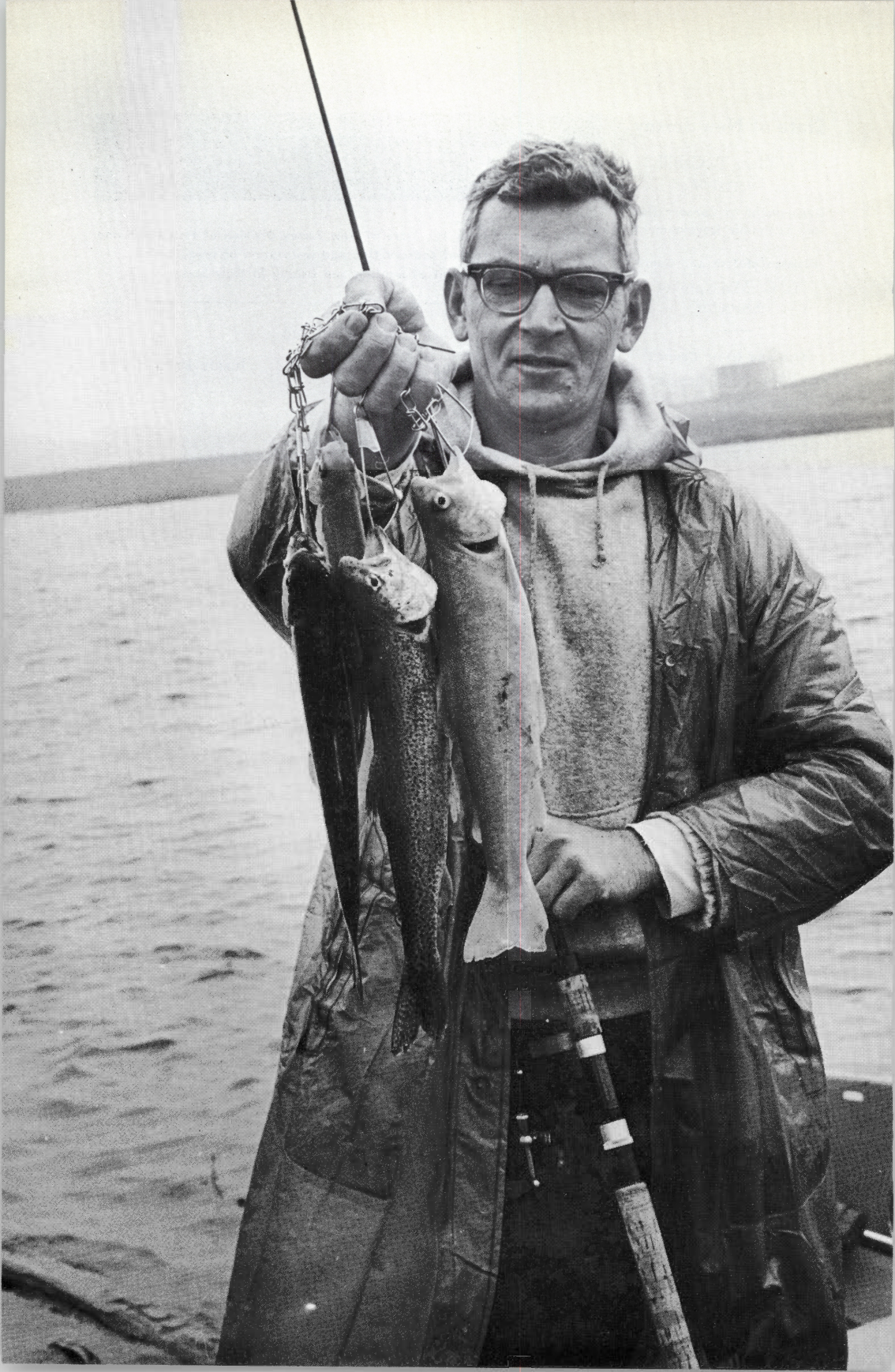
Second class postage paid Trenton, N.J. 08601, and additional mailing office.

Subscription: \$2.00 a year, by check or money order, payable to Division of Fish and Game. Cash is forwarded at sender's risk. No stamps please.

Change of address: Should be reported directly to the Editor. Send both old and new address. The Post Office will not forward copies unless forwarding postage is provided by subscriber. Copies not delivered through failure to send change of address six weeks in advance cannot be replaced.

All unsolicited material is sent to the magazine at the risk of the sender. Permission granted to reprint with credit to *New Jersey Outdoors*.

New Jersey State Library



# The Golden Gift

from West Virginia

By Robert W. Williams  
Superintendent of Fish Hatcheries

The golden rainbow trout arrived in New Jersey in April or May of 1963. West Virginia Fisheries Biologist Harvey Beall and Vincent Evans of the West Virginia Division of Fish Management drove throughout the night in a station wagon, the rear deck of which had been rather elaborately prepared to insure the survival and safe delivery of five yearling golden rainbow trout to the Charles O. Hayford State Fish Hatchery at Hacketts-town. The 9-inch to 12-inch trout were contained in large plastic bags containing water into which oxygen had been injected before closure, the bags were surrounded by ice to reduce the water temperature and metabolism of the fish. All was placed in corrugated cardboard cartons to retain the necessary cool temperature.

## The Story

The origin of the golden rainbow trout officially called the "West Virginia Centennial Golden Rainbow Trout" has not been lost to mankind in the dim recesses of the past, but is a very recent story of observation, appreciation of the unique, and display

of conscientious nature on the part of Vincent Evans, Manager of the Petersburg Trout Hatchery. The beginning was in the year 1949 when a shipment of 10,000 rainbow trout fry of a California strain was received at the Petersburg State Trout hatchery as a gift from the National Fish Hatchery at White Sulphur Springs, West Virginia. Of this shipment, three hundred trout survived from which brood stock was selected.

The first spawning of this lot occurred in 1951. Eggs were taken each succeeding year from them as well as from their original offspring as they matured. From this group of fish, in the fall of 1954, came the single embryo that started the golden strain. Early in 1955 a yellow mottled fingerling was found among several thousand others at the Petersburg Trout Hatchery. Manager Vincent Evans named the fingerling "Little Camouflage" before he was transferred to manage the Spring Run, W. Va. hatchery.

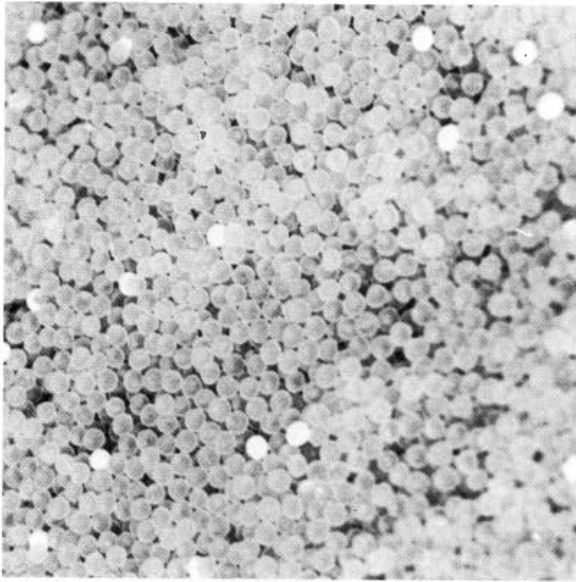
His successor, Chester Mace, moved the trout to a raceway where natural food was available and by mid-summer of 1956 it became evident that the fish

← Two golden trout and two rainbow trout. Joe Servis of Hamilton at Round Valley Reservoir

### . . . Golden Gift

was a female. A wide golden band now encircled the middle of her body. Unable to find a golden rainbow male, she was crossed to a regularly colored male rainbow in October of 1956 and yielded nine hundred eggs. No facilities for maintaining such a small number of eggs were available so the eggs

ing a pale yellow in the rearing ponds. Within a few weeks, nearly three hundred fingerlings had changed to a "true-golden" color. Dr. Edward C. Kinney, former Fish Division Chief, suggested that they be grown on an experimental basis. Hatchery Superintendents Mace and Evans were assigned to supervise the selection of good quality brood stock for color-



*Trout eggs in tray. The white eggs are infertile and are picked out by the hatchery workers*

were mixed with thousands of others taken from rainbow brood stock. Mace and his hatcherymen watched the small fry turn to fingerlings, but none displayed a hint of golden coloration.

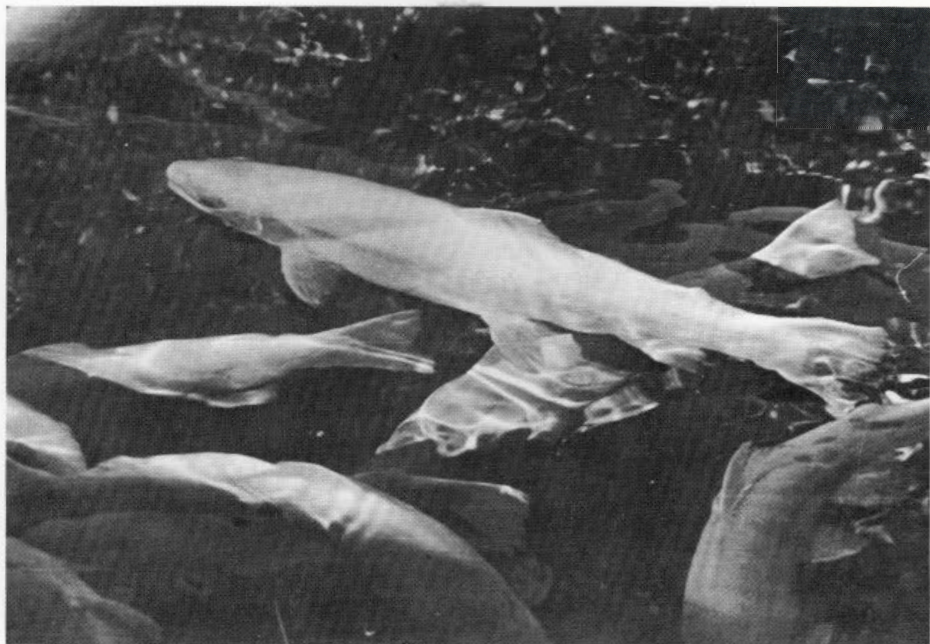
#### **Selection**

During December and January of 1957, 500,000 fingerlings were transferred from Petersburg to Spring Run where Vincent Evans was now manager. In February hatcherymen noticed that several small fish were turn-

ing and the spawning of this strain. The first goldens did not display as desirable a growth rate as the parent stock, but this was overcome by continued selective breeding.

#### **A Mutation**

It is believed that a chance mutation occurred to produce the first golden rainbow, and there is some speculation that there may be a distant genetic link between the golden trout found in high altitude lakes of the Sierra Ne-



*A pool of golden trout is a striking sight*



*The golden rainbow trout is not an albino*

## . . . Golden Gift

vada and Rocky Mountains and the California strain of rainbow trout, but the dominant thought is that they are completely unrelated. We are reasonably sure that the golden is a mutant strain of rainbow, completely unrelated to the Rocky Mountain golden trout.

### **Our Start**

Although our start was not as crucial as the successful spawning of a single trout, the five goldens generously given to us by the State of West Virginia was a humble beginning. The widespread newspaper publicity given to the original two males and three females gave us anxious cause for con-

A liberal portion of praise is given to Senior Hatcheryman Frank Wheeler, a veteran of 40 years service at Hackettstown, who has for many years been in charge of the nursery buildings and our chief trout spawn taker, for the conscientious care given to this strain of trout since they were received at the hatchery.

The number of eggs taken does not imply, however, that there will be that number of fingerling trout, since hatchability varies with lots and species of trout. Hatchability may be lower than 50 percent or as high as 90 percent. Usually this ranges between 75 percent to 90 percent.

Initially golden rainbows were released in lakes only, until the spring

### **The Golden Rainbow Trout in New Jersey**

A history of spawning information at Hackettstown

November 14, 1963	2 females	2,450 eggs
November 17, 1964	1 female	1,700 eggs
November 10, 1965 to December 6, 1965	168 females	150,000 eggs
November 11, 1966 to December 7, 1966	98 females	110,625 eggs
November 15, 1967 to November 27, 1967	92 females	89,000 eggs
October 9, 1968 to November 25, 1968	312 females	283,775 eggs
October 3, 1969 to November 26, 1969	935 females	662,340 eggs

cern since the impression seemed to be that we would be stocking thousands of brilliantly golden colored beauties the day after tomorrow. It is fortunate that we spawned our first eggs from two-year-old trout on November 14, 1963, the autumn following the spring they were received, since before they could be spawned again a juvenile vandal visiting the hatchery had stoned to death one male and one female.

distribution season of 1969 when initial stream releases were begun. The number stocked each year has increased from 107 in 1967 to 1,505 in 1968 and rose to 5,385 in 1969. Several thousand will be released in the upcoming distribution season of 1970.

### **Plans and Results**

Plans are to attempt rearing enough golden rainbows to completely fill one



*Golden trout being stocked with regular trout*

or two of our larger rainbow trout ponds to the point where 20,000 might be stocked in any given year. It is regrettable, however, that since 1967 when whirling disease was diagnosed here that the rearing of golden rainbows is now subject to the same restrictions that apply to regular rain-

bow stock i.e., fingerlings must be kept at high density levels in concrete pools throughout the summer months until September which restricts growth and increases mortality.

We have found that the golden rainbow has a very desirable rate of growth under normal conditions, and

## . . . Golden Gift

is a great favorite with New Jersey trout anglers. Upon sunny days here at the hatchery a pool of golden trout is a striking sight to behold for not only do the trout appear brilliantly golden with some males displaying a crimson lateral band, but the reflected golden radiance from their bodies is cast into the surrounding water somehow imparting a pleasant aura that will engrave a permanent niche in one's memory.

### **Acknowledgments**

We are greatly indebted to the fisheries personnel of West Virginia from Robert Stephens, then Assistant Chief of Fish Management who arranged for

the shipment of eggs, to Harvey Beall now Supervisor of Hatcheries in the Division of Wildlife Resources and from whose article "The West Virginia Centennial Golden Trout" a few catching phrases were borrowed. Especially should the world of trout fishermen be appreciative of the work of Vincent Evans, Chester Mace, and David Cochran, Assistant Manager of the Petersburg Hatchery. The New Jersey angling fraternity and State Bureau of Fisheries under the Division of Fish and Game must be grateful to T.V. news commentator Chet Huntley who was instrumental in arranging for delivery of the precious cargo of the initial five goldens into the hands and keeping of the Charles O. Hayford State Fish Hatchery. #

*Bob Hayford, Phil Alampi, and Chet Huntley, with regular rainbow*





*Two golden rainbow trout and two regular rainbow trout, showing the similarities and differences*

# An Encounter

## At Spruce Run Creek

By William Honachefsky

The gurgling water in the small rapids lapped anxiously at my boots as I negotiated the slippery rocks hidden below the river's shimmering surfaces. The late April sun had already been up for several minutes or so and my anxiety was beginning to show. Spruce Run Creek had put on its very best attire that morning to greet her fisherman friend and I nodded in acknowledgement and approval of her beauty.

Meandering through pastures, quiet vales and small patches of woodland from her source near Pleasant Grove, just above the northern Hunterdon-Morris County boundary line, to her mouth at the newly created Spruce Run Reservoir at Glen Gardner, Spruce Run Creek lies in one of the last agrarian frontiers in New Jersey. Fishermen were nothing new to her and she had welcomed them many times and many decades ago, just as she had me this morning. Wildflowers grew in profusion and each struggled for its place in the sun, whose rays would soon be blotted out by the

maturing foilage of the trees. Bell-worths, violets, and mayapple each tried to outdo the other's beauty.

Once past the rapids the stream was deeper and the current slower and the sounds of life in the woods became much clearer. Warbled tunes of various birds intermingled in a symphony of unequalled excellence. As I approached the bend beyond which lay one of my favorite and most productive fishing holes I had to traverse across a colony of skunk cabbage and I hate to disturb even this lowliest of plants for fear of upsetting the delicate balance Nature had established here on Spruce Run. I firmly believe that the fisherman should be an observer rather than an intruder.

The bend came up fast now and another small rapids was all that separated me from finally wetting my line in the clear waters. Suddenly I came to an abrupt halt for there was something definitely out of place up ahead. It looked like a dam, but its exterior surface bore not the trademark of man but the chiseled beauty

of a creature I had never before observed on Spruce Run. It was without a doubt a bona-fide beaver dam and behind it lay my favorite pool, now longer, deeper and wider and much more attractive to the trout that lurked there.

Curiosity soon took precedence over earlier anxieties to wet a line and I moved more cautiously now in hopes of observing the landlord on his estate. I had heard my grandfather, many

attention from his mate snuggled up in a downy nest high up in a bole of one of the big trees. I hoped his hasty escape had not alarmed the dam's engineers. As I gazed about I saw the numerous conical white stumps staggered about the general area and an elm half gnawed through, I leaned at a precarious angle towards the stream. I moved along the side of the stream and found a place to sit amongst some large boulders which



*As I gazed about I saw conical white stumps about the area*

years ago, talk of beavers on the nearby Mulhocaway Creek and also Spruce Run but had regarded such tales with youthful skepticism.

Several ancient beech trees bowed over the water and a startled male woodduck flew out of the tree tops creaking noisily, hoping to distract my

had tumbled down from the cliff above, and proceeded to wait and watch.

Time passed quickly and soon my presence had been forgotten by the creatures of the woods and I was now only a motionless part of the scenery. Grey squirrels chattered around my

### . . . An Encounter

feet and tail-twitching chipmunks scurried in and out of the rocks that surrounded me, stopping occasionally to observe a flickering eyelash or the bend of a smile. The startled wood-duck drake returned and with whistling wings hurtled down through the tree tops to land with a splash in the

dered what settler or Indian brave had sat on this spot, perhaps this very rock, and viewed the same scenery I was now observing.

Suddenly there was a splash and I saw a head rise to the surface of the water in the center of the pool. Two beady eyes gazed from a blocky head hung motionless in the water, the only indication of its presence, the undulat-



*I gazed about as much as I could without alarming the residents*

center of the beavers' pond. He remained motionless for a moment then swam toward the bank to nap.

I gazed about as much as I could without alarming the community's residents and the fishing pole at my side had long been forgotten. Little had changed on this section of Spruce Run and it could very well have been nineteenth century New Jersey. I won-

ing wave patterns rippling towards shore. Slowly the brown form moved and in a vee-current headed slowly toward shore.

With nose in air and beads of water hanging precariously on pliable whiskers the slick coated beaver crawled onto the bank of the stream. From his size I knew he wasn't a mature adult and I waited with impatience for the

others to appear, expecting a family, but none did. He paid no attention at all to the new object in his domain, probably due to the effective camouflage of my olive drab boots and jacket, and instead set about to fell that leaning elm.

I watched in amazement as chips fell with each bite and added to the pile already surrounding the stump. In a matter of minutes the tree creaked and finally fell with a loud crash to the carpet of leaves below.

I fully expected him to then continue his woodcutting on the succulent top branches as he waddled towards the top of the tree which had fallen almost into the water. He didn't stop there, nor at the bank and before I knew it he had slid off the bank and disappeared underwater in a trail of bubbles.

I waited for ten minutes for him to return but only the wind stirred the surface and an occasional trout leaping for a fly raised my hopes. Aching

muscles necessitated some slight movement and as I did so, the sleepy wood-duck slid from bank to water, nervously pumping his head and once again took to the air in a splash.

As I stretched and looked about I came to realize something I had overlooked before. The beavers' food supply was already nearing depletion from the looks of the amount of trees cut in the area and sadly I knew that the beavers would soon be gone, maybe for another decade or perhaps this time for an eternity.

I picked up my pole and took one last look trying to photograph it in my mind. Time had truly reversed itself, for me anyway and for awhile it had been the nineteenth century again along Spruce Run. I had come to fish and left with more than a limit of trout. All those years of skepticism of old men's tales had been for naught. Yes, grandpop, there were beaver on Spruce Run because I saw them too.

---

---

1970

## *Middlesex County Junior Sportsmen's Show*

Rutgers Field House, New Brunswick

**April 7 - April 11, Inclusive**

Daily—9:30 a.m.—10:00 p.m.

Saturday, April 11—9:30 a.m.—5:00 p.m.

Theme—Conservation through Education

**Many exhibits—rod and gun, archery, skin diving, movies,  
special events, conservation, fish and game, and nature**

**No charge for Admission**

**Adam Zdrodowski, Chairman**

# Where the Trout Are

## or places to fish for trout

The following list of waters scheduled for stocking with trout prior to the opening of the 1970 spring, trout fishing season is a good guide for fishermen looking for a place to fish on the first day, Saturday, April 4. This tentative list shows the number and size-class of the catchable-size trout already stocked or to be stocked by opening day of the trout season.

### Key to Abbreviations

S—trout 7-9 inches.      M—trout 7-10 inches.      L—trout 7-18 inches.

#### Atlantic County

Birch Park Pond—Northfield .....	L	760
Hammonton Lake—Hammonton .....	L	760

#### Bergen County

Hackensack River—Old Tappan to Harrington Park .....	L	1,160
Hohokus Brook—Allendale to Ridgewood .....	S	280
Indian Lake—Little Ferry .....	M	100
Musquapsink Creek—Washington Township .....	S	50
Pascack Creek—Montvale to Westwood .....	M&L	500
Pond Brook—Oakland .....	S	50
Ramapo River—Mahwah to Oakland .....	L	4,100
Saddle River—Saddle River to Grove Street .....	L	1,800
Tienekill Creek—Closter .....	S	220

#### Burlington County

Strawbridge Lake—Moorestown .....	L	580
Sylvan Lake—Burlington .....	L	800
Woolman's Lake—Mount Holly .....	L	580

#### Camden County

Back Run—Berlin .....	M	50
Big Lebanon Run—Turnersville .....	L	820
Grenlock Lake—Turnersville .....	L	520
Munn's Lake—Haddonfield .....	L	460
Rowands Pond—Clementon .....	L	800
Square Circle Pond—Gibbsboro .....	L	580

#### Cape May County

Dennisville Lake—Dennisville .....	L	360
------------------------------------	---	-----

#### Cumberland County

Cooper Mill Park Pond—Vineland .....	M	240
Manantico Creek—Millville .....	M	180
Mary Elmer Lake—Bridgeton .....	L	280
Maurice River—Jessup Bridge .....	M	360
Shaw's Mill Pond—Newport .....	L	580

## Essex County

Branch Brook Park Lake—Newark	L	580
Diamond Mill Pond—Millburn Township	L	580
Verona Park Lake—Verona	L	580

## Gloucester County

Almonesson Lake—Almonesson	L	860
Greenwich Lake—Gibbsboro	L	400
Harrisonville Lake—Harrisonville	L	620
Iona Lake—Iona	L	720
Mullica Hill Lake—Mullica Hill	L	360
Raccoon Creek—Ewan to Swedesboro	L	140
Swedesboro Lake—Swedesboro	L	640

## Hudson County

Hudson County Park Lake—North Bergen	L	580
--------------------------------------	---	-----

## Hunterdon County

Alexandria Brook—Milford	S	100
Alexauken Creek—Mount Airy	M	360
Amwell Lake—Ringoes	L	220
Back Brook—Ringoes	M	280
Beatty's Brook—Penwell	S	75
Capoolong Creek—Pittstown	M	940
Delaware-Raritan Canal—Raven Rock to Hunterdon County Line	L	1,520
Everittstown Brook—Everittstown	S	220
Frenchtown Brook—Frenchtown	S	260
Guinea Hollow Brook—Mountainville	S	420
Hakihokake Creek—Milford	S	100
Little York Brook—Little York	S	280
Lockatong Creek—Milltown	M	700
Milford Brook—Milford	S	160
Mt. Pleasant Brook—Mt. Pleasant	S	100
Mulhockaway Creek—Norton to Pattenburg	M	240
Musconetcong River—Route 31 to Delaware River	L	5,580
Neshanic Brook—Reaville	S	100
Prescott Brook—Round Valley	S	320
Raritan River, S/B—Hunterdon County Line to Three Bridges	L	6,680
Rockaway Creek, N/B—Mountainville to Whitehouse	M&L	760
Rockaway Creek, S/B—Lebanon to Whitehouse	S	280
Round Valley Reservoir—Lebanon	L	960
Spring Mills Brook—Milford	S	140
Spruce Run—Glen Gardner	M	720
Spruce Run Reservoir—Clinton	L	1,200
Sydney Brook—Sydney	S	100
Tetertown Brook—Tetertown	S	500
West Portal Brook—West Portal	S	100
Wichecheoke Creek—Prallsville	S	220

## Mercer County

Assunpink Creek—Carnegie Road to 100 ft. below Whitehead Road	L	800
Colonial Lake—Trenton	L	220
Delaware-Raritan Canal—Hunterdon County Line to Yardley Bridge	L	2,600
Stony Brook—Woodsville to Port Mercer	L	2,440

## . . . Where the Trout Are

### Middlesex County

Bissets Pond—South River	M	100
Farrington Lake—New Brunswick	L	900
Ireland Brook—Fresh Ponds	S	140
Lawrence Brook—Milltown	L	1,160
Roosevelt Park Lake—Metuchen	L	280
Sucker Brook—Iselin	S	360
Wigwam Pond—Jamesburg	L	280

### Monmouth County

Big Brook—Marlboro	M	50
Englishtown Mill Pond—Englishtown	L	140
Garvey's Pond—Nevasink	L	280
Hockhocks Brook—Tinton Falls	M	260
Manasquan River—Farmingdale to Allenwood	L	4,160
Mingamahone Brook—Farmingdale	S	240
Mohawk Pond—Red Bank	L	240
Old Mill Pond—Villa Park	L	180
Pine Brook—Tinton Falls	S	75
Ramanesson Brook—Holmdel	M	760
Shadow Lake—Red Bank	L	580
Shark River—Hamilton	M	180
Spring Lake—Belmar	L	580
Takanassee Lake—Long Branch	L	280
Topenemus Lake—Freehold	L	360
Willow Brook—Holmdel	M	100
Yellow Brook—Colts Neck	M	360

### Morris County

A.B.C. Pond—Roxbury Township	M	120
Beaver Brook—Rockaway	M	420
Black River—Milltown to Hacklebarney State Park	L	1,320
Budd Lake—Budd Lake	L	360
Burnett Brook—Ralston	S	140
Burnham Park Lake—Morristown	L	280
Den Brook—Union Hill	S	100
Drakes Brook—Flanders	S	340
Electric Brook—Schooley's Mountain	S	120
Flanders Brook—Flanders	S	180
Gruendykes Mill Pond—Hackettstown	L	140
Guard Lock—Saxton Falls	L	440
Hibernia Brook—Hibernia	S	280
Indian Brook—Mendham	S&M	640
Lake Hopatcong—Lake Hopatcong	L	3,172
Lake Musconetcong—Netcong	L	360
Ledgewood Brook—Ledgewood	S	400
Midland Lake—Succasunna	M	140
Mill Brook—Center Grove	S	500
Mt. Hope Pond—Mt. Hope	L	540

Musconetcong River—Sussex County Line to Hackettstown	L	4,320
Peapack Brook—near Gladstone	S	100
Pompton River—Rt. 23 to DL&WRR Bridge, Lincoln Park	L	440
Primrose Brook—Rt. 202 to Logansville	S	220
Raritan River, S/B—Rt. 46, Budd Lake to Hunterdon County Line	L	2,240
Reservoir Brook—Brookside	S	100
Rhinehart's Brook—Hacklebarney State Park	S	220
Rockaway River—Milton to Boonton	L	8,360
Saw Mill Brook—Pompton Plains	S	140
Speedwell Lake—Morristown	L	400
Stickle Brook—Boonton Township	S	120
Towaco Brook—Towaco	S	100
Trout Brook—Hacklebarney State Park	S	100
Washington Valley Brook—Morristown	S	220

### Ocean County

Metedeconk River, N/B—Georgia to Greenville	L	860
Metedeconk River, S/B—Bennett Mills to Lakewood	L	600
Prosperstown Lake—Prosperstown	M	400
Toms River, N/B—Holmansville	L	340

### Passaic County

Barbour's Pond—near Paterson	L	360
Belcher's Creek—West Milford	S	220
Cooley's Brook—Browns	S	100
Lafayette Pond—Hawthorne	M	220
Oldham Pond—North Haledon	L	360
Pequannock River—Smith Mills to Butler	L	800
Pompton Lake—Pompton Lakes	L	720
Pompton River—Pompton Lakes to Route 23	L	2,380
Post Brook—Bloomingdale	S	120
Ringwood Brook—Ringwood	M	100
Sheppards Lake—Thunder Mountain	L	360
Wanaque River—Greenwood to Pompton Lakes	L	2,800

### Salem County

Hancock's Sand Wash Pond—Salem	L	260
Schadler's Sand Wash Pond—Penns Grove	L	400

### Somerset County

Harrison Brook—Liberty Corner	S	100
Lamington River—Burnt Mills	L	280
Passaic River—Basking Ridge to Dead River	L	1,660
Peapack Brook—Gladstone	M	360
Raritan River, N/B—Far Hills Jct. to S/B Raritan River	L	2,340
Raritan River, S/B—Neshanic Station to Dalrymple Bridge	L	1,220
Rock Brook—Zion	S	280
Toms Brook—Martinsville	S	220

### Sussex County

Alm's House Brook—Myrtle Grove	S	100
Andover Jct. Brook—Andover Jct.	M	180

## *. . . Where the Trout Are*

Beaver Run Brook—Beaver Run	S	180
Bier's Kill—Shaytown	S	50
Big Flat Brook, upper—Saw Mill Lake to Route 206	S&L	740
Big Flat Brook, lower—Route 206 to Delaware River	L	7,200
Black Brook—Beaver Lake Mt.	S	100
Black Brook—McAfee	S	100
Clove River—Colesville to Sussex	M	480
Cranberry Lake—Cranberry Lake	L	360
Culver's Lake Brook—Branchville	S	100
Dragon Brook—Cranberry Lake	S	75
Dry Brook—Branchville	S	75
Glenwood Brook—Glenwood	S	75
Hardystonville Brook—Hardystonville	S	100
Hunt's Lake Brook—Yellow Frame	S	100
Kymer's Brook—Andover	S	75
Lake Ocquittunk—Stokes State Forest	L	580
Little Flat Brook—Hainesville to Bevans	M	1,040
Lubbers Run—Lake Lackawanna	S&M	240
Mill Brook—Wanaque Township	S	160
Musconetcong River—Lake Hopatcong to Sussex County Line	L	780
Neldon Brook—Swartswood	S	75
North Church Brook—Monroe	S	100
Papakating Creek—Pelletown to Sussex	M	420
Papakating Creek, W/B—McCoy's Corner	M	220
Parker Brook—Stokes State Forest	S	120
Paulinskill River—Lafayette to Stillwater	L	2,300
Pequest River—Springdale, Rt. 206 to Warren County Line	L	440
Pond Brook—Middleville	S	100
Quarry Brook—Sussex	S	100
Roy Spring Brook—Stillwater	S	100
Saw Mill Lake—High Point Park	L	580
Seneca Lake—Sparta Township	L	140
Shimers Brook—Montaque Township	S	120
Sparta Glen Brook—Sparta Glen	M	320
Sparta Jct. Brook—Sparta Jct.	S	100
Stony Brook—Stokes State Forest	S	100
Stony Lake—Stokes State Forest	M	400
Swartswood Lake—Swartswood	L	540
Tar Hill Brook—Lake Lenape	S	75
Trout Brook—Middleville	S	160
Tuttles Corner Brook—Tuttles Corner	S	100
Wallkill River—Sparta to Hamburg	S&L	1,740
Wawayanda Lake—Wawayanda Lake	L	360
Yellow Frame Brook—Yellow Frame	S	100

### **Union County**

Ash Brook—Clark Township	S	140
Green Brook—Scotch Plains	S	220
Rahway River—Springfield to Rahway	L	3,200

## Warren County

Allens Saw Mill Brook—Delaware	S	75
Barker's Mill Brook—Vienna	S	100
Bear Creek—Southtown	S	100
Beaver Brook—Hope to Pequest River	M	200
Blair Creek—Blairstown	M	160
Blair Lake—Blairstown	L	140
Buckhorn Creek—Roxburg	S	220
Dark Moon Brook—Johnsonburg	S	100
Delawanna Brook—Delaware	S	180
Dunnfield Creek—Dunnfield	M	520
Furnace Brook—Oxford	S	260
Honey Run—Hope Township	S	75
Jacksonburg Brook—Jacksonburg	M	280
Johnsonburg Creek—Johnsonburg	S	75
Lomison's Glen Brook—Lomison's Glen	S	100
Lopatcong Creek—Harmony to Phillipsburg	S	800
Low's Hollow Brook—Broadway	S	240
Mill Brook—Broadway	S	100
Mountain Lake—Buttville	L	580
Muddy Run—Hope	S	100
Musconetcong River—Hackettstown to Route 31, Hampton	L	6,260
Paulinskill River—Stillwater to Hainesburg	L	4,900
Pequest River—Long Bridge to Belvidere	L	3,600
Pohatcong Creek—Mt. Bethel to Carpentersville	S&M	3,360
Pophandusing Creek—Hazen to Belvidere	S	420
Roaring Rock Brook—Brass Castle	S	260
Rockport Game Farm Pond—Rockport	M	100
Silver Lake—Hope	L	280
Trout Brook—Hackettstown	S	240
Trout Brook—Hope	S	75
Van Campens Brook—Millbrook	M	640

### If You Are Changing Your Address

Please fill out this form and send it to NEW JERSEY OUTDOORS, P. O. Box 1809, Trenton, New Jersey 08625, so that you will continue to receive your copies of the magazine without interruption. (NEW JERSEY OUTDOORS cannot be forwarded by the post office; therefore, we need your new address in advance. Allow six weeks for processing.)

Name .....

OLD ADDRESS .....

Post Office ..... State ..... Zip Code .....

NEW ADDRESS .....

Post Office ..... State ..... Zip Code .....

# Pignut Hickory

(*Carya glabra*)

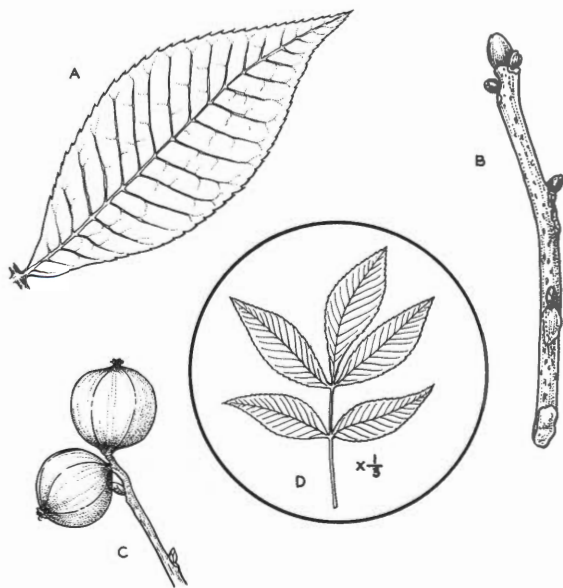
The name of this tree is derived from its smooth or hairless foliage. Pignut hickory is known by other names, such as oval pignut, red hickory, and small-fruited hickory. This tree grows in a mixture with other species, especially the oaks. It grows best on a deep, fertile, moist soil; however, it will grow on dry and sandy soils. Pignut hickory needs the least moisture and fertility of the hickories most common to New Jersey.

## Range:

Southern New Hampshire and Massachusetts; west to New York, extreme southern Ontario, southern Michigan, and Illinois; south to northeastern Mississippi; and east through northern Alabama, Georgia, and South Carolina.

## Leaves:

Alternate, compound, 5 to 7 leaflets, with 5 being more common. Leaves are 8 to 12 inches long. The terminal leaflet is 4 to 6 inches long and 1½ to 2 inches wide. Lateral leaves are smaller. (See figures A and D.) Leaves are sharp-pointed at the apex and have a finely toothed margin. They are thick, smooth, dark green on top and pale green on the bottom.



*Pignut Hickory*

- A. Leaflet
- B. Twig
- C. Fruit
- D. Leaf

### Twigs:

Slender, smooth, and reddish brown. Terminal buds are  $\frac{1}{4}$  to  $\frac{1}{2}$  inch long. They are covered by several reddish-brown, smooth scales that drop off. Lateral buds are smaller. (See figure B.) The bark is close and has deep furrows with interlaced ridges. It rarely peels off the trunk, although it is somewhat flaky. The bark is dark gray and  $\frac{1}{2}$  to  $\frac{3}{4}$  inch thick.

### Flowers:

Male and female flowers appear separately on the same tree when leaves are half developed. Male flowers develop from axils of leaves of the previous year's growth or from the inner scales of the terminal buds at the base of the current year's growth. They grow in catkins, three to a cluster. From 2 to 10 female flowers appear in short spikes on new growth.

### Fruit:

Oval to pear-shaped and to  $1\frac{1}{4}$  inches long. It has a hard husk, which is about  $\frac{1}{10}$  inch thick. The husk is reddish-brown and sometimes slightly hairy. (See figure C.) The nut is thick, bony, and not ridged. The kernel is sweet to slightly bitter.

### Uses:

Ranges from 50 to 60 feet tall and 2 feet in diameter or larger. The wood is hard, heavy, and strong but not durable in the soil. It is used mainly for handles, certain vehicle bodies, rough lumber, piling, fuel, meat smoking, and certain sporting and athletic goods. #

—Austin N. Lentz, *Extension Specialist in Farm Forestry*  
Rutgers—The State University  
Drawings by Aline Hansens

---

---

## What's in a Line . . . ?

A fishing line is a fishing line. . . so what's the big deal about line weight, line test, and whether it's braided or monofilament?

Despite efforts by fishing line manufacturers, many anglers don't understand the importance of choosing the correct line to match their equipment.

Having the right line can make a lot of difference when it comes to catching fish. Not only does the correct line help your casting, but it plays a big part in how the lure is presented to the fish.

Fly fishermen probably have the most critical decisions to make. Rod length, its action, and whether they are fishing dry or wet flies are all important considerations.

Generally, a floating, tapered line is used with dry flies, and a sinking line with wet flies. Popping bugs for bass call for weight forward lines. Follow the rod maker's recommendations as to line weight. They are usually printed on the butt section of any good rod.

# Special Study Shows Increased Car-Kill of Animals

A sharp increase in animals killed by motor vehicles on state highways of the region is possibly linked with abundant rainfall, reports the Upper Raritan Watershed Association as it released the results of a special three-year study on highway animal kills.

The study period began on September 1, 1966, and was conducted continually until August 31, 1969. Statistics were compiled under the supervision of Joseph Galayda, Assistant Supervisor of Landscape Maintenance for the N.J. Department of Transportation. Mr. Galayda praised the record-keeping of his Maintenance foreman, William Killmurray, and Assistant Maintenance foreman, Kenneth O'Dell as well as the nine members of the Chester Maintenance Crew.

The study covered Routes 202, 206, and 287 for a distance of 28.5 miles

## Tally of Animals Killed by Motor Vehicles—Special Study

SPECIES	1966-67				1967-68				1968-69			
	Route			Total	Route			Total	Route			Total
202	206	287	202		206	287	202		206	287		
Deer	3	19	53	75	13	23	27	63	24	50	72	146
Opossum	30	7	19	56	17	10	9	36	23	36	12	71
Raccoon	18	12	3	33	7	9	8	24	7	21	8	36
Rabbit	27	37	24	88	25	43	21	89	17	80	10	107
Dog	0	3	5	8	2	6	2	10	2	11	11	24
Housecat	13	5	0	18	4	8	6	18	11	29	12	52
Squirrel	38	21	27	86	41	23	19	83	17	53	15	85
Skunk	4	7	0	11	2	4	3	9	7	16	18	41
Owl	0	3	0	3	0	1	0	1	0	11	1	12
Woodchuck	13	22	9	44	9	18	7	34	7	18	7	32
Snake	0	0	4	4	1	4	0	5	0	3	4	7
Horse	0	1	0	1	0	0	0	0	0	0	0	0
Cow	0	0	0	0	0	0	0	0	0	1	0	1
Song Birds	7	21	0	28	12	16	13	41	8	31	12	51
Chipmunk	8	21	17	46	13	27	14	54	13	25	12	50
Muskrat	1	0	0	1	0	0	0	0	1	9	10	20
Fox	0	0	0	0	0	7	1	8	0	5	3	8
Chicken	0	0	0	0	0	2	0	2	2	0	0	2
Turtle	0	0	0	0	0	3	0	3	0	3	10	13
Mouse	0	0	0	0	0	1	0	1	4	5	13	22
Pigeon	0	0	0	0	0	0	0	0	1	1	3	5
Rat	0	0	0	0	0	0	0	0	0	3	1	4
Frog	0	0	0	0	0	0	0	0	1	0	5	6
Game Birds	5	5	0	10	3	2	3	8	3	18	11	32
<b>TOTAL</b>	<b>167</b>	<b>184</b>	<b>161</b>	<b>512</b>	<b>149</b>	<b>207</b>	<b>133</b>	<b>489</b>	<b>148</b>	<b>429</b>	<b>250</b>	<b>827</b>

through the Somerset Hills. This past year 827 animals were killed, or almost 30 per mile, compared to 489 last year and 512 in 1966. Most striking is the increased mortality in deer from 63 to 146; opossums from 36 to 71, housecats from 18 to 52, skunks from 9 to 41 and muskrats from none to 20.

Richard D. Goodenough, Executive Director of the Watershed Association, said that the deer figures may very well indicate another substantial buildup in the local deer herd caused by stringent deer harvesting laws and the unwillingness of many landowners to allow hunting. In addition he said, "We've known for a long time that wildlife is a crop of the land. It's a direct product of land productivity and it flourishes or declines in relation to the condition of the landscape. The abundant rainfall of this year coupled with the adequate rainfall of last year is perhaps the key reason for what seems to be a very substantial increase in wildlife populations. The lush quality of the countryside, as opposed to the parched years of drought, has benefited all links in the food chains. As populations increase, however, several types of controls arise to keep their numbers in relation to the carrying capacity of the environment. Motor vehicles are one of these controls". #

---

---

## Speeds of Game Fish Relative

When an angler claims a fish "took off like a shot," one may envision the sudden departure of a Titan missile, and to the guy on the shot end of the rod at the time, it certainly seems that way.

The speeds which many game fish can achieve dispel any notion that a fisherman can "fish too fast." In fact, when you consider the sprints of some saltwater billfish, there's no fishing boat in existence that could stay even close.

According to studies, swordfish are able to reach speeds of about 70 miles an hour; marlin can score in the 50's. Tuna, normally considered pot-bellied heavyweights, can hustle along better than 40 mph.

On the freshwater scene, speeds are a great deal slower. But on small-spool reels their effects are equally spectacular. And, when compared with the top speed of most fishing skiffs, some freshwater species are more than equal in the dashes.

In the broad classification of *Salmo*, Atlantic salmon and brown trout have been clocked at 23 mph. This isn't too bad when you realize this pace may be four or five times faster than most trolling speeds. This mark earns even more prestige when compared against the timed maneuver by the fabled bonefish whose measured best is one mph slower—and the bonefish is known as a speedster!

Actually the speed of different fishes is relative—to size, to type of water, to equipment, etc.—for even a bluegill seems rocket-powered to a five-year-old.

The obvious conclusion, though, is that you can't fish too fast if fish really want to strike. But most of the ones we catch seem to be on the lazy side. #

# The Bald Eagle

## Species:

*Haliaeetus leucocephalus*

## General Characteristics:

A very large hawk-like bird, usually seen soaring on flat wings, or perched in some conspicuous location such as a dead pine tree. Adults have white heads and white tails, while the immatures have dusky heads and tails, and may be confused with golden eagles. The adult bald eagle is our national emblem.

## Range:

Becoming rare outside Alaska. Occasionally seen in New Jersey along the sea coast or the Delaware River in the winter. Formerly nested in the state at a number of locations.

## Life History:

The bald eagle nest is a large affair (from 6 to 8 feet wide and from 4 to 12 feet deep) constructed of branches and twigs of trees and brush, and all manner of trash carried to and placed in the nest by both adults. The nest is used for a number of years, gradually increasing in depth up to 12 feet. In the east, eagle nests were usually found in trees, but where available, (usually in western states and Canada) were occasionally found on rocky crags on tops of mountains or on steep rock faces. The mated pair begins their annual nest rebuilding as early as February, and 2 or 3 eggs are laid toward the end of March and apparently have an incubation period of 34-35 days. Because the eggs are laid a day or two apart, and hatch a day or two apart, one eaglet is larger than the other, and this bird is usually the one which survives. Both parents bring food to the nest, tearing bits of flesh to feed the young. Food of the young is the same as adults eat—mostly fish (70 percent-95 percent), but also including all manner of freshly killed game as well as carrion. Food includes chickens, skunks, rabbits, small mammals, small birds, waterfowl, crabs, lambs, etc. Well known is the eagle's habit of thieving spring-run herring from ospreys, which are forced by the larger bird to drop their prey. The eagle then continues its swoop, catching the fish before it falls to the ground. Eagles can catch live fish, birds, or animals, but apparently prefer to take the line of least resistance, picking up dead or weakened animals when available. The young eaglets remain in the nest cared for by the parents for 10 to 11 weeks, after which they continue to associate with the flying adults for the remainder of the summer, learning how to obtain food. The young birds

*The adult bald eagle is easily recognized by its white head*



begin to test their wings at about 8 weeks of age, and are able to fly considerable distances before abandoning the nest.

#### **Enemies:**

The eagle has no enemies except man, and he has become most effective in nearly eliminating this magnificent bird. In recent years, the widespread use of that insidious poison, DDT, has apparently resulted in many infertile eggs, not only in eagles, but in ospreys, black ducks, and probably many other species. #

---

### *Passing Thoughts on Poison Ivy*

Poison ivy is common enough in New Jersey so that people roaming our fields and forests must forever remain on guard against it. Almost everyone starts life immune to poison ivy. Some people have been able to come in contact with this plant for many years before they finally developed the characteristic blisters and itching, while others become sensitive to its poison early in life. Once a person has become sensitized he will be much more susceptible to poison ivy thereafter.

What is it in the poison ivy plant that causes all the trouble? It is a fluid called oleoresin contained in the leaflets, stems of the leaves, twigs, and bark. Light contact with the plant will not liberate the poisonous juice. The plant must be bruised. On the other hand, so stable is this poisonous chemical that soot particles from the burning plant can infect sensitive people. Even dead and dried-out plants are infectious.

Some people claim they are so sensitive to poison ivy that they catch it every summer from the pollen. This is not true. Their best bet is to keep the dog or cat away from poison ivy. These pets can easily carry the poison on their coats and then infect people who pet them.

One to two days after exposure the person who is sensitive to this plant will generally show the usual skin reaction—reddening, then itching followed by blisters. Contrary to popular belief, the fluid from these blisters does not help spread the itching to uninfected areas. #

# State Trophy Deer Listings

The Division of Fish and Game's Information and Education Section has released the official trophy deer listings as of January 1, 1970.

The list was compiled from entries received in the initial 1968 competition, the measuring sessions held during the past year, and from those entries received at the Trenton Office. All entries were checked for errors in addition and subtraction and, in some cases, heads were remeasured when figures did not agree with other information submitted.

## New Jersey State Trophy Deer Program Listing

### TYPICAL—FIREARM

<i>Hunter</i>	<i>County</i>	<i>Year</i>	<i>Score</i>
1. Fred Space	Sussex	1950	163 $\frac{3}{8}$
2. George E. Leber, Jr.	Burlington	1967	151 $\frac{7}{8}$
3. George Leber, III	Monmouth	1965	148 $\frac{7}{8}$
4. Wilbert Zarin	Salem	1968	145 $\frac{5}{8}$
5. Warren Strang	Salem	1964	142 $\frac{3}{8}$
6. George Alsheimer	Middlesex	1967	141 $\frac{5}{8}$
7. Carl Torchio	Bergen	1967	141 $\frac{5}{8}$
8. Thomas Hope	Gloucester	1968	140
9. Troy Clark	Ocean	1968	138 $\frac{5}{8}$
10. James Allen	Gloucester	1968	137 $\frac{5}{8}$
11. Harry Romaine	Sussex	1965	136 $\frac{7}{8}$
12. Carmen Clark	Monmouth	1957	135
13. Gene Coppola	Burlington	1966	134 $\frac{9}{8}$
14. C. Kenneth Moore	Mercer	1954	134 $\frac{5}{8}$
15. Vincent Canterelli	Somerset	1945	134 $\frac{3}{8}$
16. Charles H. Gray	Burlington		134 $\frac{1}{8}$
17. Herman Johnson	Monmouth	1942	133 $\frac{3}{8}$
18. Edward L. Linke	Monmouth	1932	132 $\frac{7}{8}$
19. Joseph Fritts	Warren	1959	132
20. George H. Kinney	Hunterdon	1944	131 $\frac{9}{8}$
21. Dale M. VanDerMark	Sussex	1968	131 $\frac{4}{8}$
22. George Leber, Jr.	Ocean	1956	129
23. Warren Pittenger	Sussex	1968	128 $\frac{9}{8}$
24. Linden Mathews	Hunterdon	1950	127 $\frac{4}{8}$
25. Frank Meissner, Jr.	Morris	1954	127 $\frac{3}{8}$
26. David Goff	Ocean	1965	125 $\frac{7}{8}$
27. John R. Bedell	Ocean	1946	125 $\frac{7}{8}$
28. Charles W. Gray	Ocean	1960	125 $\frac{5}{8}$
29. James O. Peale	Hunterdon	1957	125

TYPICAL—BOW AND ARROW

<i>Hunter</i>	<i>County</i>	<i>Year</i>	<i>Score</i>
1. Edward Kayes	Monmouth	1953	141 $\frac{7}{8}$
2. John G. Young	Sussex	1965	123 $\frac{1}{8}$
3. Mike Peragino	Sussex	1965	114 $\frac{3}{8}$
4. Neil Zullo	Somerset	1967	109 $\frac{3}{8}$
5. Frank G. Clark	Passaic	1968	103 $\frac{3}{8}$
6. James T. Kelly	Burlington	1968	100 $\frac{0}{8}$

NON-TYPICAL—FIREARM

<i>Hunter</i>	<i>County</i>	<i>Year</i>	<i>Score</i>
1. John R. Bedell	Monmouth	1954	166 $\frac{2}{8}$
2. Robert J. Bennett	Monmouth	1957	150 $\frac{5}{8}$
3. Michael Wasitowski	Somerset	1968	140

There have been no entries submitted to date for the category Non-Typical—Bow and Arrow.

Permission was granted by The Boone and Crockett Club to use their measuring system in judging the heads submitted.

A minimum of 125 points has been set for firearm deer and 100 points for bow and arrow entries. As additional deer are added, a higher minimum may be needed to limit the length of the list.

Public Information Assistant Robert McDowell, is very pleased with the program to date, and wishes to remind those entering the 1969 competition that all archery entries are now due.

Boone and Crockett rules state that a 60-day drying period is needed before measurements are taken, and in observing this the Division has set February 23, 1970 as a deadline for entries to accommodate all hunters participating in the various seasons offered in New Jersey.

Official forms are available from Conservation Officers, Fish and Wildlife Management Areas, and the Trenton Office. These are to be completed by the hunter and forwarded to the Trenton Office with an attached photograph of the head. The largest entries submitted will then be selected for official measurement at a later date in the Trenton Office. #

*If you are in the process of refinishing your boat for the season, don't neglect to repaint the registration number. Separate letters from numbers and make sure the solid part of your letters shows plenty of contrast with the color of the hull.*

# Violators Roundup

## **Fishing Violations \$20.00**

James Warrell, Runnemede; John Fernandes, Newark; Kenneth Kowolczyk, Wallington; Clyde Speer, Jr., Passaic; Edward Glossman, Jr., Collingswood.

## **Fishing Violations \$500.00**

George Jacobs, Asbury Park.

## **Hunting Violations \$5.00**

Frank Harris, Asbury Park; Joseph Burke, Elmer; Allen Richardi, Parsippany; William Polka, Butler.

## **Hunting Violations \$10.00**

John Petrasky, Vineland.

## **Hunting Violations \$15.00**

Karl Ottoson, Dover.

## **Hunting Violations \$20.00**

Thomas Helinger, Palmyra; Peter Crane, Burlington; Robert Godfrey, Moorestown; Gary Lomonaco, Philadelphia, Pa.; Thomas Curreri, Waterford; William Stephens, Alloway; Kenneth Morgan, Bellmawr; Harold Buckhart, Sewell; Wayne Buckhart, Barnsboro; Wayne Van Duyn, Denville; James Sutton, Bridgeton; Albert G. Timmons, (2) Bridgeton; Curtis Gerhart, Sewell; Richard Dunn, Jackson; Eugene Kirk, Gloucester City; Lester Kettro (9) Carteret; Edward Walker, (2) Mt. Holly; Hans Lerman, Keyport; James McCarthy, Fairview; Edward Burden, Pennsville; Samuel Nicolosi, Salem; Richard Cooper, Hiawatha; Ken Garden, Spring Lake Heights; Thomas Petronick, Forked River; Henry Phillips, Forked River; Henry Bystrak, Summit; John Elisko, Perth Amboy; Jack Bystrak, Summit; Gordon Kirk, Nutley; Christopher Marafiate, Garfield; Steven Meglic, Phillipsburg; Allen Krosenchy, Phillipsburg; Robert Bill, Phillipsburg; Francis Burns, Mt. Holly; James Gleman, Bedminster; Primo Rodriguez, Woodbine; Walter Sutton, Dorchester; Bud Goloeski, E. Brunswick; Robert L. Kendrick, Jamesburg; Kees Geurds, Trenton; Joseph Orlando, Hopewell; John McAleer, Bayonne; Walter Evens, Jersey City; George Kilmer, Lambertville; Marvin Price, Park Lane, Md.; John J. Newton, Greenwich; Steven Kirtsos, Atlantic City; Robert Zellman, Mt. Holly; Robert Gerst, Jr., (2) Gibbstown; Thomas Brown, Flemington; Manuel Lopez, Linden; Adam Palmisciana, Somers Pt.; Hardy Sampson, Cardiff; Adam Bunting, Cardiff; Ernest Jones, Newton; Louis Szekely, Somers Pt.; Al Tappeiner, Somers Pt.; Ralph Chester, Somers Pt.; Antonio Aurizia, Paterson; Richard Hamilton, Moorestown; Warren Beetle, Runnemede; James Kerr, W. Collingswood; Kenneth Mead, Bridgeton; Drestes Rodriguez, Union City; Richard Olsen, Secaucus; William Killian, Cruburn; Chuck Collins, Franklinville; John Price, Gloucester;

Roger Brengel, Somerville; Louis Cristy, Roselle; Richard Adams, Dunellen; Charles Gilmer, Moorestown; Dave Dodd, Dividing Creek; Joseph Stella, Wildwood; Jean Young, Cape May; George Hammel, Villus; Ray Morfit, Ramsey; Robert Marion, Oakland; Stanley Mitchell, Pemberton; Frank Guzzo, Turnersville; Gerald Hasson, Brigintine; Joseph A. Ritter, Highlands; Walter Lee, Millville; John Oldenburg, Jr., Oakland; William Farrell, (2) Bradley Beach; William Buccain, Cranford; Andy Dolan, Flanders; Andrew Harsonyi, Rockaway; Michael Wright, Bridgeport; Henry Sherwood, Jr., (2) Swedesboro; Albert Kruger, Philadelphia, Pa.; Jerome Fields, Jersey City; Willie L. Brown, Toms River; Michael Tzatzas, (9) Carteret; John Carlisle, Bridgeton; Edward Howy, Jr., Millville; Lewis Zane, Pennsville; Robert Cross, Pennsville; Harry McClurg, Pennsville; Sam Tomblin, Salem; Earl L. Erdner, (3) Woodstown; Victor Burger, Bricktown; Bryce Shields, Trenton; William Schelling, Manahawkin; William Flynn, Surf City; Gilbert Humbert, Paterson; Raymond Clark, Haledon; George Aughey, Haledon.

### **Hunting Violations \$100.00**

Melvin Johnson, English Creek; Hans Lerman, Keyport; Robert McDonald, Keansbury; Lewellyn Steckel, Stewartsville; Irvan Knit, Washington; Primo Rodriquez, Woodbine; Walter Sutton, Dorchester; Joseph Braddon, Plainfield; Clifton Bradley, Plainfield; Frank Hammel, Kendall Park; George Columbus, Berkeley Heights; Julius Murray, Stockton; Walter Evens, Jersey City; George Bivins, Jamesburg; John Tinger, Ridgewood, N.Y.; Wilhelm Stimpfel, Ridgewood, N.Y.; James Eisile, Pamona; Vitturio Silvestri, Camden; Omar Bozarth, Cherry Hill; Gary Schanaburger, Woodbury; George Woodward, Camden; Milton Clauson, (4) Newton; Ralph Chester, Jr., Somers Pt.; Larry Lawson, (2) Fieldsboro; Kenneth Whilden, Delmont; Donald B. Monro, Middletown; Richard Olsen, Secaucus; Harry De Groat, Johnsonburg; Alan Zokowski, Blirstown; Charles Wyble, III, Hashell; Joseph McKaig, Kearney; Marina Burgus, Elizabeth; Frank Martinelli, Vineland; Jayme Nichols, Delmont; Carson Shephard, Hainesport; Everett Hubbard, Newton; Alvin H. Vanderhaf, Budd Lake; James Morrison, Dennisville; John Smith, Bell Plain; John Newton, Greenwich; Samuel Niolasi, Woodbury; Conrad Braun, Newfield; John Strawder, Farmingdale; Otto G. Fleckenstein, Cranbury; John Thomas, Lawrenceville; Bruce Booker, Cranbury; Clarence Leeds, Northfield; Albert McCorriston, Medford; Richard Catalano, Vineland; Peter Fabricatore, Clifton; Colleen Buerkle, Dunellen; Jim Dulin, Florham Park; William Nicola, Roselle Park; Frederick Tocce, Phillipsburg; Albert Thurman, Mt. Ephraim; Patrick Foster, Barneгат; James Pedrick, Bridgeton; William Hazzard, Thorofare; Salam Shamy, Mays Landing; Franklin Rodosti, Mays Landing; John Herwick, Marmora; Clyde Hardner, Salem; Leonard Miller, Pitman; Herman Rawe, Columbia; Edward Asay, Jr., Bayville; Michael Tzatzas, Carteret; Lester Kettro, Carteret; James Kutson, Jamesburg; Michael Tesauo, Haledon; Raymond Clark, Haledon; John Riegler, Hewitt.

## . . . Violators Roundup

### **Hunting Violations \$25.00**

Oscar Berman, E. Paterson.

### **Hunting Violations \$50.00**

Primo Rodriquez, Woodbine; Walter Sutton, Dorchester; Frank Campolo, Roselle Park; George Kilmer, Lambertville; Howard Nowak, Bernardsville; Donald Galuska, Lebanon; Kenneth Whilden, Delmont; Howard Beumber, Gibbstown; Jayme Nichols, Delmont; Henry Hofman, Jr., Newton; Joseph Stella, Wildwood; Robert Gernert, Newark; Michael Fecko, Clifton; Stanley Kowolski, Clifton; Jack Hackett, Clifton; Andrew Kochis, Jr., Belle Mead; Michael Tzatzas, Carteret; Lester Kettro, Carteret.

### **Hunting Violations \$200.00**

Donald Wood, Jr., Harvey Cedars; Howard Baum, Harvey Cedars.

### **Hunting Violations \$300.00**

Richard Sona, Newark; Richard McGratham, Jersey City.

---

---

## *Now is a good time to subscribe to New Jersey Outdoors*

New Jersey Outdoors, P. O. Box 1809, Trenton, N. J. 08625

Please enter my subscription (at \$2.00 per year) for  1 year  2 years  
 3 Years For \$5.00  new  renewal

To:

Name .....

Street .....

Post Office ..... State ..... Zip Code .....

Please send a gift subscription (at \$2.00 per year) for  1 year  2 years  
 3 Years For \$5.00  new  renewal

To:

Name .....

Street .....

Post Office ..... State ..... Zip Code .....

From: .....

# Council Highlights

## January Meeting

The open session of the regular monthly meeting of the Fish and Game Council was held in Trenton on January 13.

## Unit Reports

George Alpaugh, Chief, reported that the Bureau of Wildlife Management was maintaining surveillance over the condition of game in the wild, which could be adversely affected by the prolonged period of freezing weather and the presence of ice-crusting snow. For the benefit of the new members on the Council, he explained the method by which the wildlife biologists maintain records of the body weight of black ducks that are trapped daily under a waterfowl banding project. If the ducks lose  $\frac{2}{5}$  of their normal body weight, the animals will be in trouble and a decision would have to be made regarding feeding. As of the time, the waterfowl were satisfactory, and it was hoped a warming trend would alleviate the situation. Mr. Alpaugh cited numerous reports that, due to the snow conditions, deer were being harassed and attacked by packs of dogs. He reported that the harvest of deer during the 1969 seasons totaled 8,484 animals and that one bear was reported taken in the Sunfish Pond area.

Robert Hayford, Chief of the Bureau of Fisheries Management, reported that the formation of ice on ponds at the Hackettstown Hatchery created an unfavorable condition for the fish and required constant attention by personnel in opening water areas.

The activities of the Public Relations Unit were covered by William E. Peterman, Supervisor. John O'Dowd, District Conservation Officer, reported on the activities of the Law Enforcement Section and called attention to the possible need for a law, similar to those of other states, to control dogs harassing deer. The Council suggested that Mr. O'Dowd obtain copies of such laws from surrounding states for review.

## Coastal Patrol

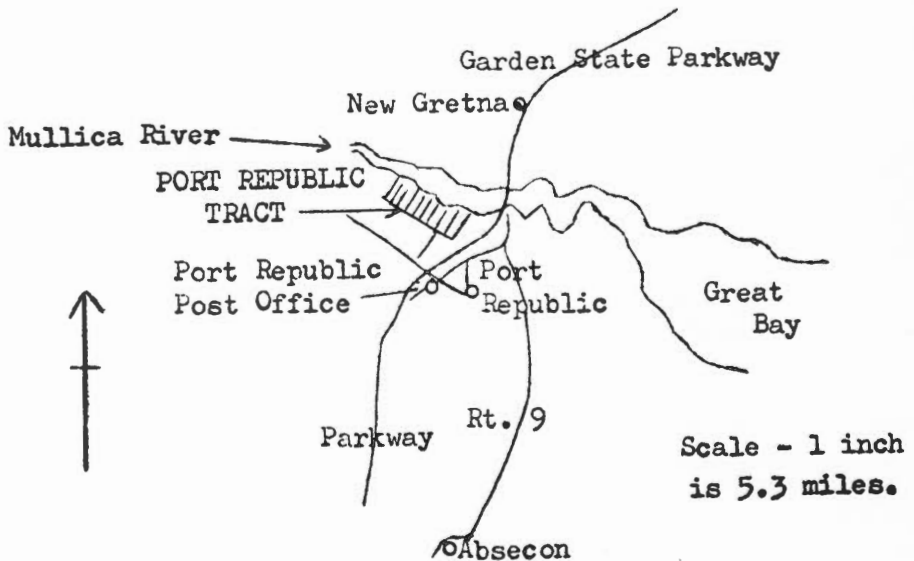
Chief Newman Mathis of the Coastal Patrol described the operations of surf clam draggers which operate close to the beach and are often mistaken as food fish draggers by the public. These draggers, as well as other type netting operations, are checked regularly by the Coastal Patrol in carrying out the surveillance of fishing operations along the coast. He also reported that two pending cases involving waterfowl violations and one case involving a back tag violation were successfully prosecuted. Mr. Mathis referred to the excellent ice fishing in Mullica River which was attracting hundreds of fishermen daily, and he called attention to the fact that non-residents fishing above the Garden State Bridge require a license. #

# Port Republic Tract

The Port Republic Fish and Wildlife Management Area comprises about 755 acres and is located in Atlantic County on the south side of the Mullica River. The eastern boundary of this tract is adjacent to the Garden State Parkway; the northern boundary follows the Mullica River to Landing Creek; the western boundary is the Landing Creek Road. There are several exceptions within the boundaries.

This tract provides upland hunting for quail, rabbits, stocked pheasants, and grouse. In addition, the marshes provide good waterfowl hunting. Muskrat trapping is permitted during the open season. Food patches and cover planting are maintained on this tract. A launching site is available at Landing Creek which provides access to Mullica River.

To reach the Port Republic Tract, proceed down the Garden State Parkway to the New Gretna Exit 52. After leaving the Parkway, follow Route 9 south about ½ mile or until the first black-top road on the right. Follow this road about 2½ miles to the Port Republic Post Office. Turn right at the Post Office, go under the Garden State Parkway, and then take the first right-hand turn which is only a few hundred feet. Proceed straight on this road about 100 feet and turn left. The entrance of the tract is on the right. To reach Landing Creek, turn left and follow this road down to the end. #



---

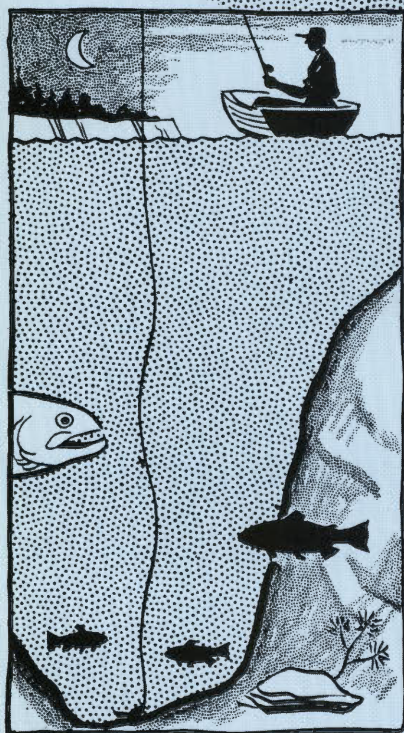
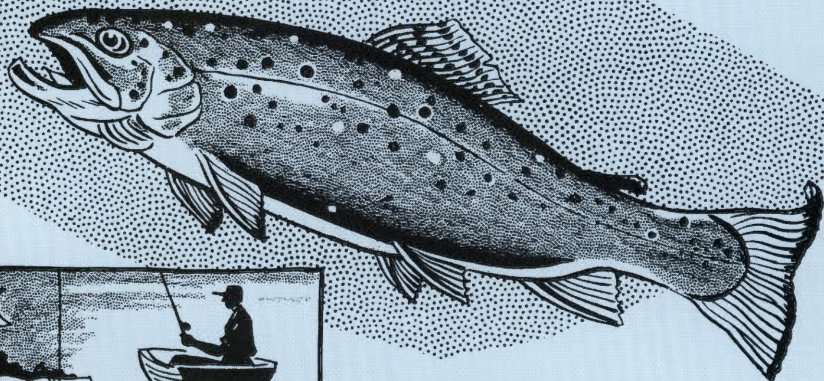
# Fur, Fin <sup>and</sup> Campfire

---

By JACK SHERIDAN

---

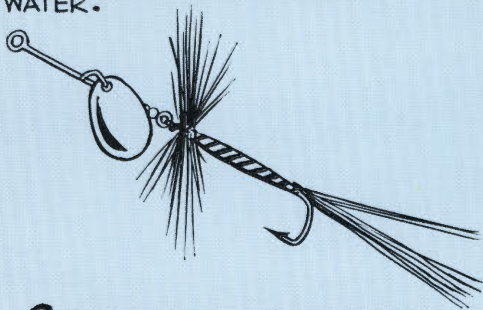
## Brown Trout



DROP BAIT INTO DEEP HOLES AND MOVE IT A BIT EVERY SO OFTEN. LEAVE SOME SLACK LINE.

CONSIDERED THE MOST WARY AND CAUTIOUS OF ALL TROUT, IT'S A RELATIVE OF SALMON, WAS INTRODUCED IN THIS COUNTRY FROM EUROPE.

THEY LIVE IN WARMER WATER BUT ALSO IN DEEP COLD LAKES AND ARE TAKEN GENERALLY IN THE EVENING OR AFTER A HEAVY RAIN ROILS THE WATER.

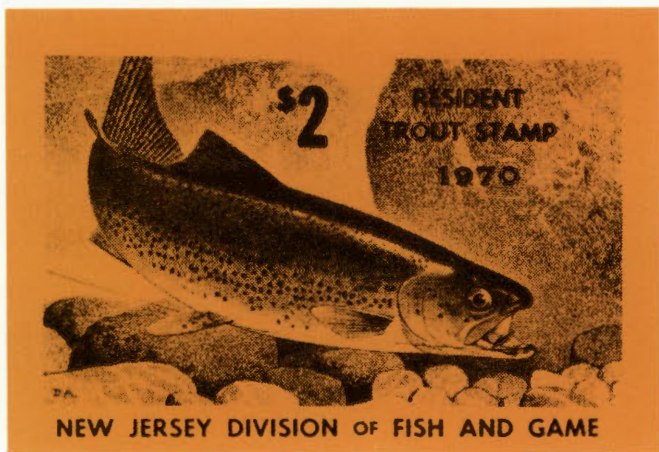


SPINNER AND FLY COMBINATIONS ARE VERY GOOD. THEY'LL ALSO BITE ON WET AND DRY FLIES, BASS BUGS, NIGHT CRAWLERS AND STREAMERS.

**New Jersey Outdoors**  
P. O. Box 1809  
Trenton, N. J. 08625

*Second class postage  
paid at Trenton, N. J.  
and additional office.*

**Remember your**



**Buy your fishing license  
and trout stamp early**