

DEPARTMENT OF HUMAN SERVICES
INTER-OFFICE COMMUNICATION

974.905
844.4
c. 2

DATE January 8, 1996

TO William Waldman
Commissioner

FROM Karen Highsmith
Acting Director



SUBJECT CURRENT PROGRAM STATISTICS

Attached please find CURRENT PROGRAM STATISTICS, including the FDP Statistical Summary for October 1995. Also included are explanatory notes for the various data elements.

Should you have any questions, please feel free to call me.

KH:kas:c

Attachments

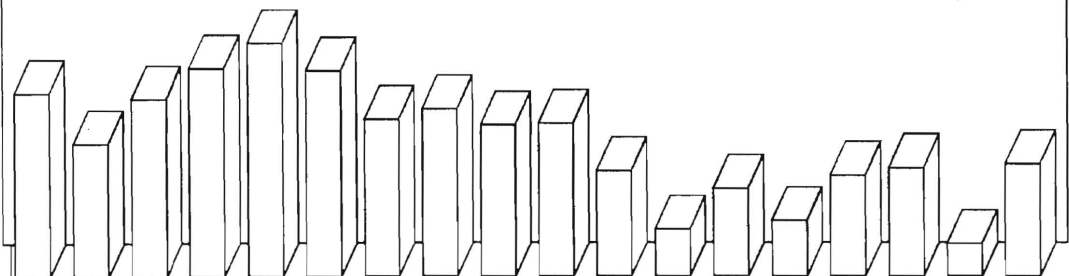
c Guhl
Grant
Tencza

*State of New Jersey
Department of Human Services
Division of Family Development*

CURRENT PROGRAM STATISTICS

October 1995

Karen Highsmith, Acting Director



State of New Jersey
Department of Human Services
Division of Family Development

CURRENT PROGRAM STATISTICS
October 1995

TABLE OF CONTENTS

	Page
Highlights of Current Program Statistics.....	1-3
 Statistics by County, October 1995	
Table 1 AFDC	4
Graph 1 Current AFDC Families.....	5
Table 2 Food Stamp Program.....	6
Graph 2 Current Food Stamp Households/Persons.....	7
Table 3 Emergency Assistance Program.....	8
Graph 3 Current Families Receiving Emergency Assistance.....	9
Table 4 Family Development Program	10
 State Summary, 1993 - 1995	
Table 5 AFDC, October 1993 - October 1995.....	11
Graph 4 Families Receiving AFDC,10/93-10/95.....	12
Table 6 Food Stamp Program, October 1993 - October 1995	13
Graph 5 Food Stamp Households,10/93-10/95	14
Graph 6 Food Stamp Recipients,10/93-10/95.....	15
Table 7 Emergency Assistance Program, October 1993 - October 1995 [Under Revision].....	16
Graph 7 AFDC Families Receiving Emergency Assistance 10/93-10/95 [Under Revision].....	17
Table 8 JOBS/FDP Participation Rates, by County and Statewide, April 1994 - October 1995.....	18
Graph 8 JOBS/FDP Participation Rates, 4/94-10/95	19
Table 9 General Assistance, April 1993 - April 1995	20
Graph 9 General Assistance Recipients 4/93 - 4/95	21
Table 10 Child Support and Paternity Federal Fiscal Years 1994-1995	22
Explanatory Notes.....	23-24
 Supplement	
Table 11 General Assistance Recipients by County and Municipality, April 1995	25

Highlights of Current Program Statistics

AFDC (Tables 1 and 5, Graphs 1 and 4)

117,508 eligible families in New Jersey were receiving AFDC as of the end of October 1995:

- Less than **106,000** single head of household families (Regular AFDC, C segment).
- Among two-parent families, about the same number, over **3200**, of Unemployed Parent families (F Segment) and State AFDC families (N Segment).
- **5100** Medicaid Only families.
- The largest numbers of families by county: Essex with **29,800**, Hudson with **18,650**, and Camden County with **13,500**. (52 percent of all AFDC families)
- Other counties ranged from under **200** families in Hunterdon to **7,600** in Passaic County.

There were about the same number of eligible families in September and October 1995. The decline in all but one month since the May/June 1994 peak of 124,600 totalled more than 7,000.

- There were about the same number of C segment families in October 1995 as in September, and **5900** less than the peak of **111,800** in June 1994.
- F segment families declined from over **4500** in May 1994 to **3200** by September 1995.
- State AFDC (N segment) grew from about **2900** families in August 1993 to almost **3500** by June 1994, but has remained around **3300** for the last year.
- Medicaid Only families remained near **5000** over the last two years, increased by more than **300** between February and June of 1995, and declined by more than **200** since June.

FOOD STAMP PROGRAM (Tables 2 and 6, Graphs 2, 5, and 6)

At the end of October 1995, 220,965 households were participating in the Food Stamp Program:

- **110,697** AFDC households
- **110,268** Other Low Income households
- **48 percent** were in Essex (**55,571**). Hudson (**29,616**) and Camden (**21,867**) Counties.
- Food Stamp households included about **515,000** persons, **245,000** adults and **270,000** children.
- In seven counties (Bergen, Hunterdon, Monmouth, Morris, Somerset, Sussex, and Warren) the number of adults exceeded the number of children in Food Stamp households.

Food Stamp households in New Jersey remained close to 215,000 families between August 1993 and February 1994, and jumped to about 222,000 families in March 1994. The number has remained between 220,000 and 222,000 since then, except for a peak in March 1995 of almost 225,000.

- The numbers of AFDC(FS) households and Other Low Income households have virtually converged, with a **difference of only 400**. There were almost **116,000** AFDC(FS) households in May 1994, and less than **111,000** in October 1995. Other Low Income households increased from an average of **100,000** for all of 1993 to **over 110,000** for October 1995.
- Total Recipients declined by **15,000** between March and October of 1995, and the October level of **514,600** was **3,000** below two years ago.
- The number of Recipient Adults, which peaked at **250,000** in March 1995, had declined to less than **245,000** by October. This is higher than two years ago when there were about **240,000** recipient adults.
- Recipient Children declined from almost **280,000** in March 1995 to less than **270,000** in October. This is about **13,000** less than the peak of almost **283,000** in March 1994 and **2,500** below the **277,000** level of two years ago.

EMERGENCY ASSISTANCE (Table 3, Graph 3)

At the end of October 1995 5475 eligible AFDC families were receiving Emergency Assistance (EA) in New Jersey.

- **2474** families received Temporary Rental Assistance (TRA)
- **560** motel placements
- **464** emergency shelter placements
- All other AFDC-EA accounted for **1977** families, including either one-time benefits such as back rent, back utilities, security deposits, furnishings, and clothing and food allowance, or shared or transitional housing.
- **1329** families in Essex County received EA, including **987** provided TRA. Middlesex had **736** EA recipient families, Passaic had **583** (mostly "Other EA"), and Mercer had **560**. All other counties had between **8** and **413** EA recipient families with nine counties **under 100**.

JOBS/FDP PARTICIPATION RATES (Table 8, Graph 8)

Statewide participation in JOBS/FDP in October 1995 was 27.9 percent, almost three percent above September, and two percent more than the previous high in May 1995. The 1995 pattern has been similar to 1994, though an upward shift is evident. The participation rate for October 1995 is six percent higher than a year ago.

- Since April 1995, all counties have experienced upward movement in participation rates. Most counties tend to have small fluctuations, with Essex, Hudson, Middlesex, Ocean, and Passaic showing clear upward movement, and Bergen, Burlington, Camden, Cape May, Gloucester, Mercer, Monmouth and Union having minimal or slight upward movement. Atlantic, and Cumberland have had large fluctuations, but maintained very high participation rates. While Sussex Warren and Salem also experienced fluctuations, their high rates have not been as sustained. Hunterdon and Somerset jumped to higher levels in late 1994 or early 1995. Morris increased markedly in 1995.
- Several counties reached new highs in October 1995. Only Camden and Cape May remained between 10 and 20 percent. Burlington (for the first time), Mercer, Passaic, and Union were between 30 and 40 percent. Hunterdon (for the first time) and Warren were between 40 and 50 percent. Atlantic (for the first time), Cumberland, Morris, Salem, Somerset and Sussex (for the first time) exceeded 50 percent. All other counties were between 20 and 30 percent including Essex (for the first time). Only two counties had lower rates in October than in September.

GENERAL ASSISTANCE (Table 9, Graph 9)

For the period April 1993 through April 1995 (the latest available information), the number of GA recipients peaked at about 37,400 in March 1993 and at 38,100 in March 1994. The level stayed around 35,000 from September through December 1994. January through April 1995 remained below 36,000.

- The number of employable recipients also peaked in March 1993 (25,900) and March 1994 (26,400). The level remained slightly over 23,000 from September through December 1994, increased to over 24,000 in January 1995, and remained below 24,000 in February, March and April.
- Unemployable GA recipients remained between 11,000 and 11,700 from March 1993 through April 1994, and hovered around 12,000 from May through November 1994. After declining to less than 11,300 by February 1995, Unemployables were up to 12,000 in March and April.

CHILD SUPPORT AND PATERNITY COLLECTIONS (Table 10)

Total collections of the Child Support and Paternity Program grew from about \$534 million to more than \$586 million from FFY1994 to FFY1995, an increase of almost 10 percent.

- Total AFDC/Foster Care collections increased from almost \$92 million to about \$97 million, or 5.3 percent.
- Non-AFDC collections grew from \$442 million to almost \$490 million, or 10.7 percent.

New Jersey Department of Human Services
Division of Family Development

TABLE 1

AFDC Program

**NUMBER OF APPLICATIONS AND TERMINATIONS DURING REPORT MONTH, AND
NUMBER OF ELIGIBLE FAMILIES RECEIVING AFDC AT END OF REPORT MONTH**

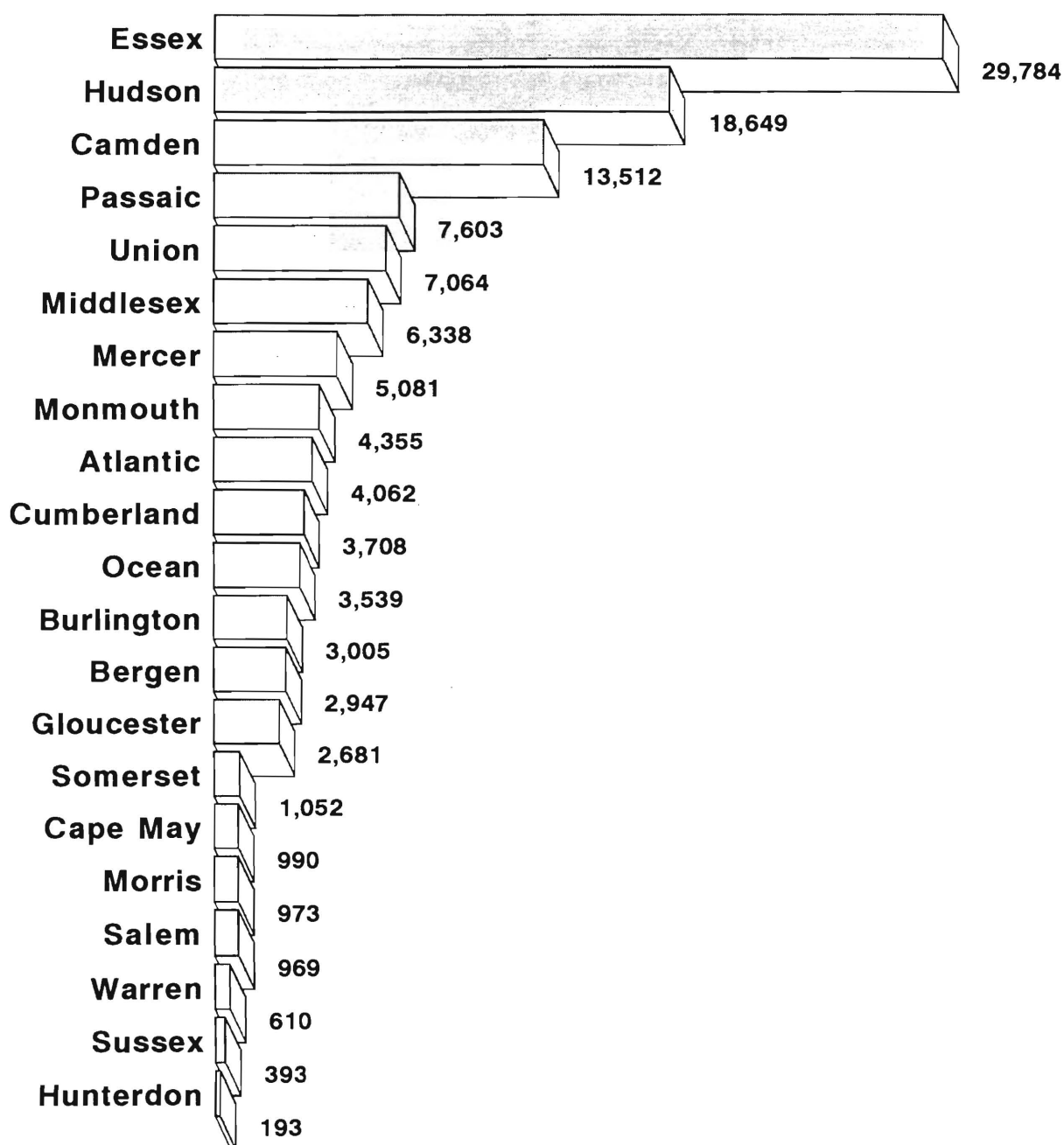
October 1995

County	Applications Approved	Terminations	Regular AFDC (C Segment)	Unemployed Parents (F)	State AFDC (N)	Medicaid Only	TOTAL AFDC
Atlantic	384	449	3,721	134	68	139	4,062
Bergen	149	145	2,595	144	120	88	2,947
Burlington	277	284	2,625	95	81	204	3,005
Camden	982	1,028	11,812	569	373	758	13,512
Cape May	107	122	832	49	52	57	990
Cumberland	308	308	3,143	177	190	198	3,708
Essex	1,210	1,178	28,366	437	246	735	29,784
Gloucester	272	229	2,319	119	86	157	2,681
Hudson	597	657	16,681	349	640	979	18,649
Hunterdon	31	35	163	5	11	14	193
Mercer	524	505	4,602	80	109	290	5,081
Middlesex	438	479	5,259	232	309	538	6,338
Monmouth	290	280	4,003	90	188	74	4,355
Morris	59	95	861	40	35	37	973
Ocean	281	307	2,988	178	163	210	3,539
Passaic	394	395	6,971	282	288	62	7,603
Salem	113	144	869	15	29	56	969
Somerset	122	154	858	43	37	114	1,052
Sussex	39	64	339	13	4	37	393
Union	439	445	6,403	141	197	323	7,064
Warren	46	56	507	32	31	40	610
NJ TOTAL	7,062	7,359	105,917	3,224	3,257	5,110	117,508

Data Sources: Data is derived from NJ Division of Family Development's FAMIS report # FF-012.

GRAPH 1

Current AFDC Families October 1995, By County



New Jersey Department of Human Services
Division of Family Development

TABLE 2

FOOD STAMP Program

NUMBER OF ATP'S ISSUED TO HOUSEHOLDS, PERSONS, ADULTS AND CHILDREN AT THE END OF THE REPORT MONTH

October 1995

County	HOUSEHOLDS			PERSONS				
	AFDC	Other low income	TOTAL	TOTAL	AFDC	Other low income	Adults	Children
Atlantic	3,842	4,693	8,535	18,766	12,341	6,425	9,216	9,550
Bergen	2,710	5,672	8,382	16,782	8,032	8,750	9,749	7,033
Burlington	2,753	2,962	5,715	13,216	8,325	4,891	6,429	6,787
Camden	12,803	9,064	21,867	54,903	41,697	13,206	24,616	30,287
Cape May	1,065	1,150	2,215	5,574	3,594	1,980	2,661	2,913
Cumberland	3,658	2,640	6,298	16,500	12,261	4,239	7,512	8,988
Essex	29,299	26,272	55,571	128,109	90,453	37,656	59,547	68,562
Gloucester	2,320	1,940	4,260	10,542	7,191	3,351	4,914	5,628
Hudson	17,504	12,112	29,616	71,753	53,252	18,501	32,290	39,463
Hunterdon	153	357	510	1,021	453	568	586	435
Mercer	4,595	4,418	9,013	19,863	14,107	5,756	9,360	10,503
Middlesex	5,627	5,934	11,561	25,974	16,863	9,111	12,832	13,142
Monmouth	4,060	6,252	10,312	22,441	12,837	9,604	11,519	10,922
Morris	820	1,868	2,688	5,392	2,438	2,954	3,116	2,276
Ocean	3,448	4,499	7,947	19,925	11,254	8,671	9,417	10,508
Passaic	7,159	9,341	16,500	38,775	23,613	15,162	18,571	20,204
Salem	889	832	1,721	4,195	2,861	1,334	1,953	2,242
Somerset	992	1,807	2,799	5,481	2,813	2,668	3,010	2,471
Sussex	341	640	981	2,238	1,042	1,196	1,201	1,037
Union	6,076	6,812	12,888	29,462	19,280	10,182	14,497	14,965
Warren	583	1,003	1,586	3,686	1,812	1,874	1,915	1,771
NJ TOTAL	110,697	110,268	220,965	514,598	346,519	168,079	244,911	269,687

ATP - Authorization to Participate, may include some duplication

Data Sources: Data is derived from NJ Division of Family Development's FAMIS report # FB-160.

GRAPH 2

Food Stamp Households

October 1995, By County

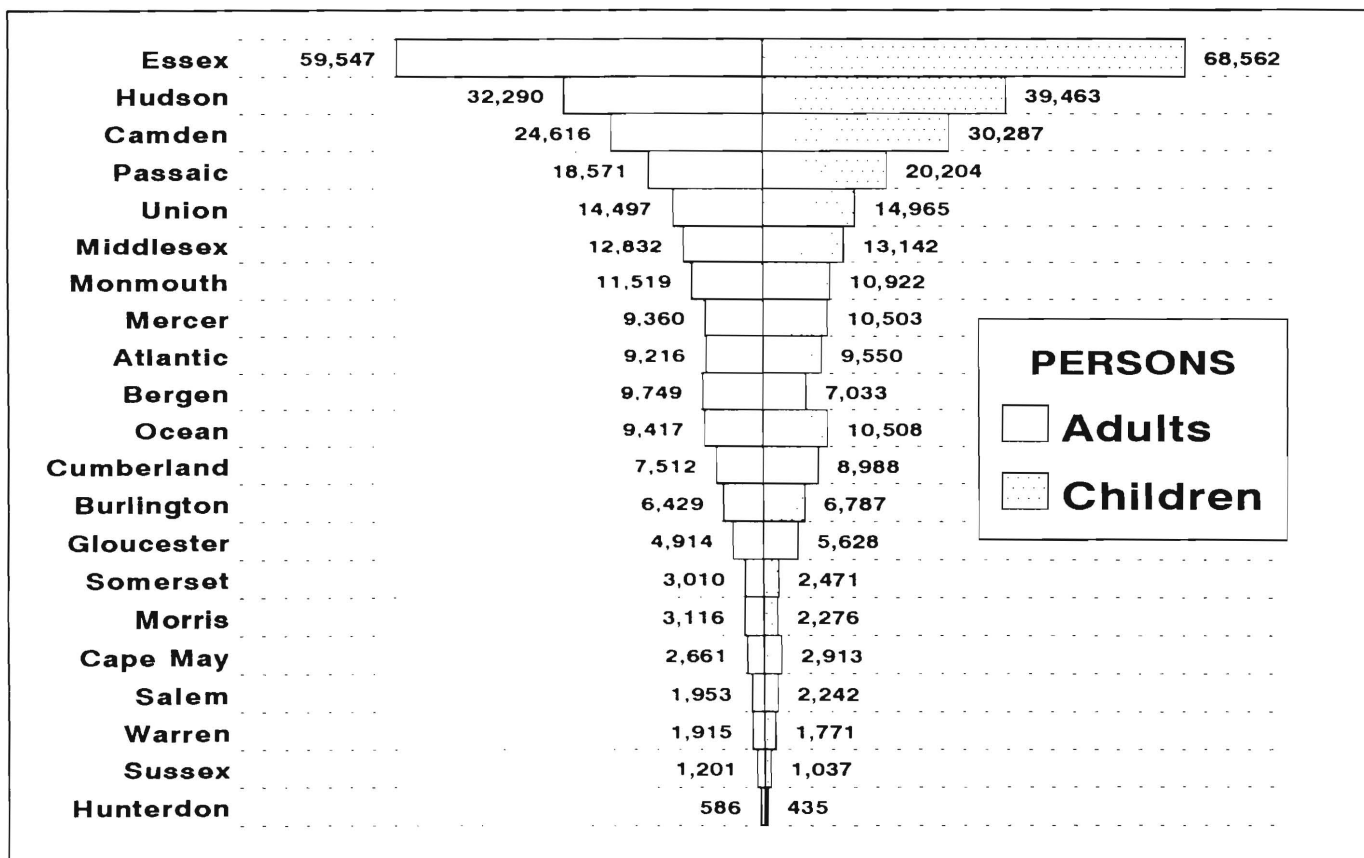
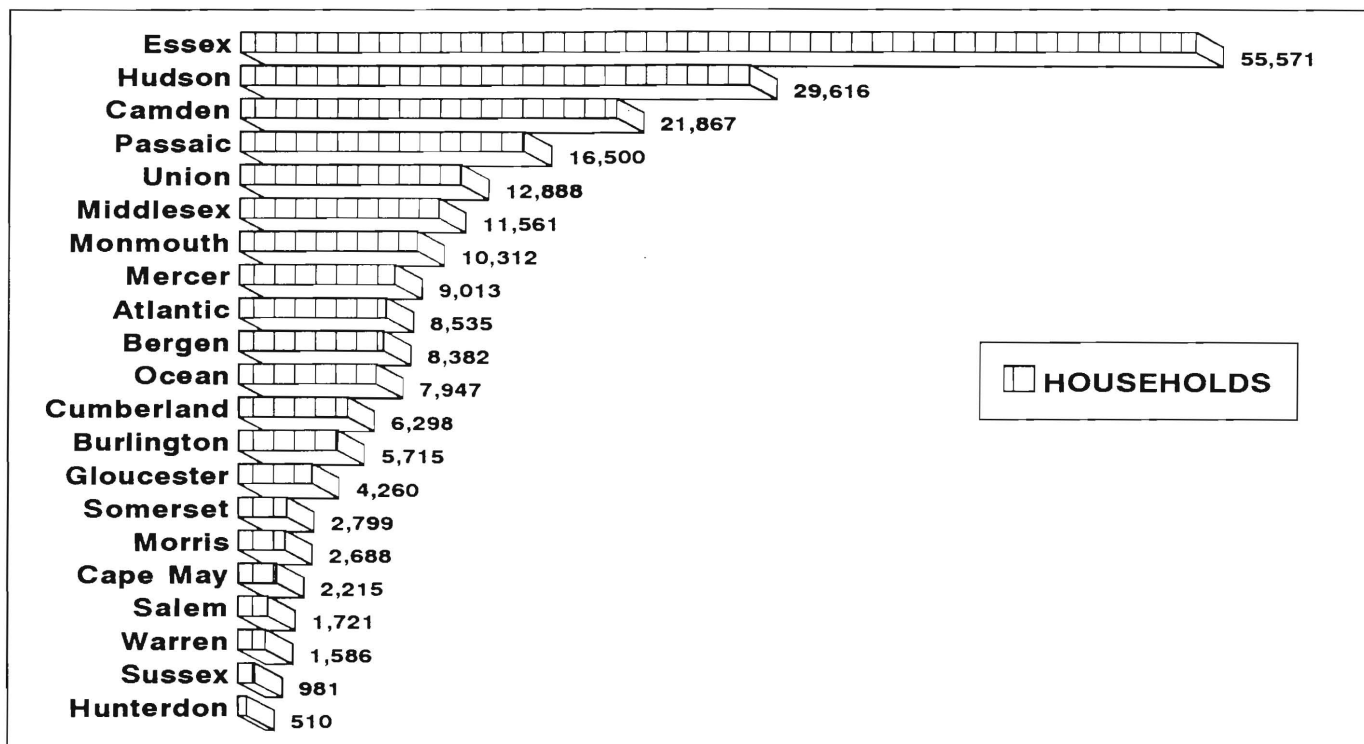


TABLE 3

EMERGENCY ASSISTANCE Program for AFDC recipients

**NUMBER OF APPLICATIONS AND TERMINATIONS DURING REPORT MONTH,
AND ELIGIBLE FAMILIES RECEIVING EMERGENCY ASSISTANCE
AT END OF REPORT MONTH**

October 1995

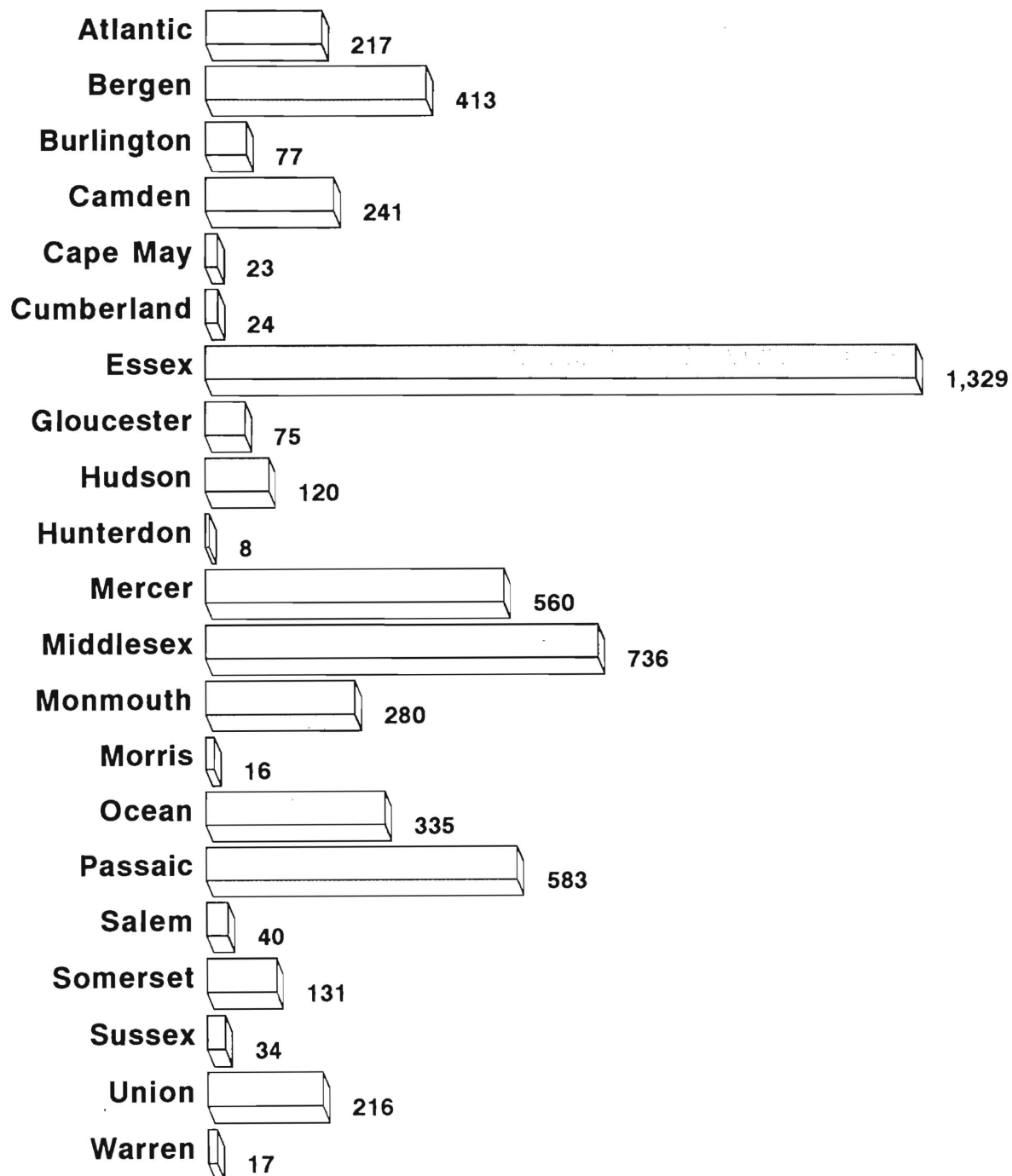
County	Applications Approved	Terminations	Total families receiving EA	Temporary rental assist.	Motel Housing	Emergency Shelter	Other AFDC-EA
Atlantic	194	63	217	58	32	47	80
Bergen	79	77	413	292	49	27	45
Burlington	47	26	77	16	2	47	12
Camden	226	245	241	72	6	38	125
Cape May	29	6	23	4	6	0	13
Cumberland	20	12	24	0	2	16	6
Essex	557	14	1,329	987	49	92	201
Gloucester	24	15	75	38	5	29	3
Hudson	56	40	120	28	3	18	71
Hunterdon	1	0	8	5	0	3	0
Mercer	127	174	560	169	55	3	333
Middlesex	89	185	736	433	25	25	253
Monmouth	55	94	280	131	69	4	76
Morris	10	16	16	0	1	12	3
Ocean	118	132	335	166	166	3	0
Passaic	551	351	583	1	18	25	539
Salem	30	21	40	14	15	3	8
Somerset	47	32	131	18	26	29	58
Sussex	12	6	34	7	10	10	7
Union	357	288	216	35	13	28	140
Warren	7	7	17	0	8	5	4
NJ TOTAL	2,636	1,804	5,475	2,474	560	464	1,977

Data Sources: Data is compiled by County Welfare Agencies & reported to the
NJ Division of Family Development on report form # PA-217.

GRAPH 3

Current Families Receiving Emergency Assistance

October 1995, By County



NEW JERSEY DEPARTMENT OF HUMAN SERVICES
DIVISION OF FAMILY DEVELOPMENT

TABLE 4
FAMILY DEVELOPMENT PROGRAM
STATISTICAL SUMMARY

COUNTY	SNAPSHOT OF ACTIVITY AS OF OCTOBER 1995				ACTIVITY FOR MONTH OF OCTOBER 1995					
	TOTAL NONEXMT JOBS/FDP RECI- PIENTS	EMPLOYMENT DIRECTED ACTIVITIES(1)			PARTIC IN EDAs & REC SUPPORT SERVICES		PARTIC W/ 1st C M INTV	# EMPL THIS MONTH & STILL REC AFDC	# CLSD ON FAMIS RE: EARNGS(2)	POST AFDC & REC CH CARE
		TRAIN- ING	EDUCA- TION	JOB SEARCH	TREs	CHILD CARE				
ATLANTIC	1,583	334	289	111	439	265	167	38	97	150
BERGEN	1,732	210	116	51	170	132	32	21	43	66
BURLINGTON	1,522	292	179	40	416	201	129	52	58	138
CAMDEN	8,058	431	532	46	924	488	264	50	185	256
CAPE MAY	612	39	28	24	51	17	58	8	31	4
CUMBERLAND	1,631	327	311	24	667	319	186	44	56	146
ESSEX	17,207	1,410	1,450	222	2,389	1,588	347	54	205	148
GLOUCESTER	1,193	235	140	29	397	113	81	7	37	72
HUDSON	11,970	1,079	1,517	79	2,364	1,066	314	37	169	248
HUNTERDON	103	10	17	9	16	13	4	4	2	9
MERCER	2,881	199	302	78	280	195	33	33	74	108
MIDDLESEX	3,642	527	277	77	547	186	295	86	102	105
MONMOUTH	2,568	260	267	82	509	288	106	43	90	166
MORRIS	472	139	51	33	110	67	100	12	22	23
OCEAN	2,065	320	196	124	214	153	193	52	84	127
PASSAIC	3,954	833	415	56	1,094	333	227	49	116	144
SALEM	418	71	104	4	131	100	23	8	20	54
SOMERSET	555	81	82	17	105	73	19	21	23	52
SUSSEX	226	32	61	59	50	38	38	12	16	27
UNION	3,894	365	398	135	639	234	245	41	66	117
WARREN	401	64	60	37	26	27	3	16	20	18
STATE	66,687	7,258	6,792	1,337	11,538	5,896	2,864	688	1,516	2,178

(1) - The number of participants receiving support services may occasionally exceed the number actively participating in EDAs. This can result from extended assessment or evaluation activities or, the issuance of bridge payments.

(2) - FAMIS file date 10/21/95

New Jersey Department of Human Services
Division of Family Development

TABLE 5

AFDC Program State Summary

**NUMBER OF APPLICATIONS AND TERMINATIONS DURING REPORT MONTH,
AND NUMBER OF ELIGIBLE FAMILIES RECEIVING AFDC AT END OF REPORT MONTH**

October 1993 through October 1995

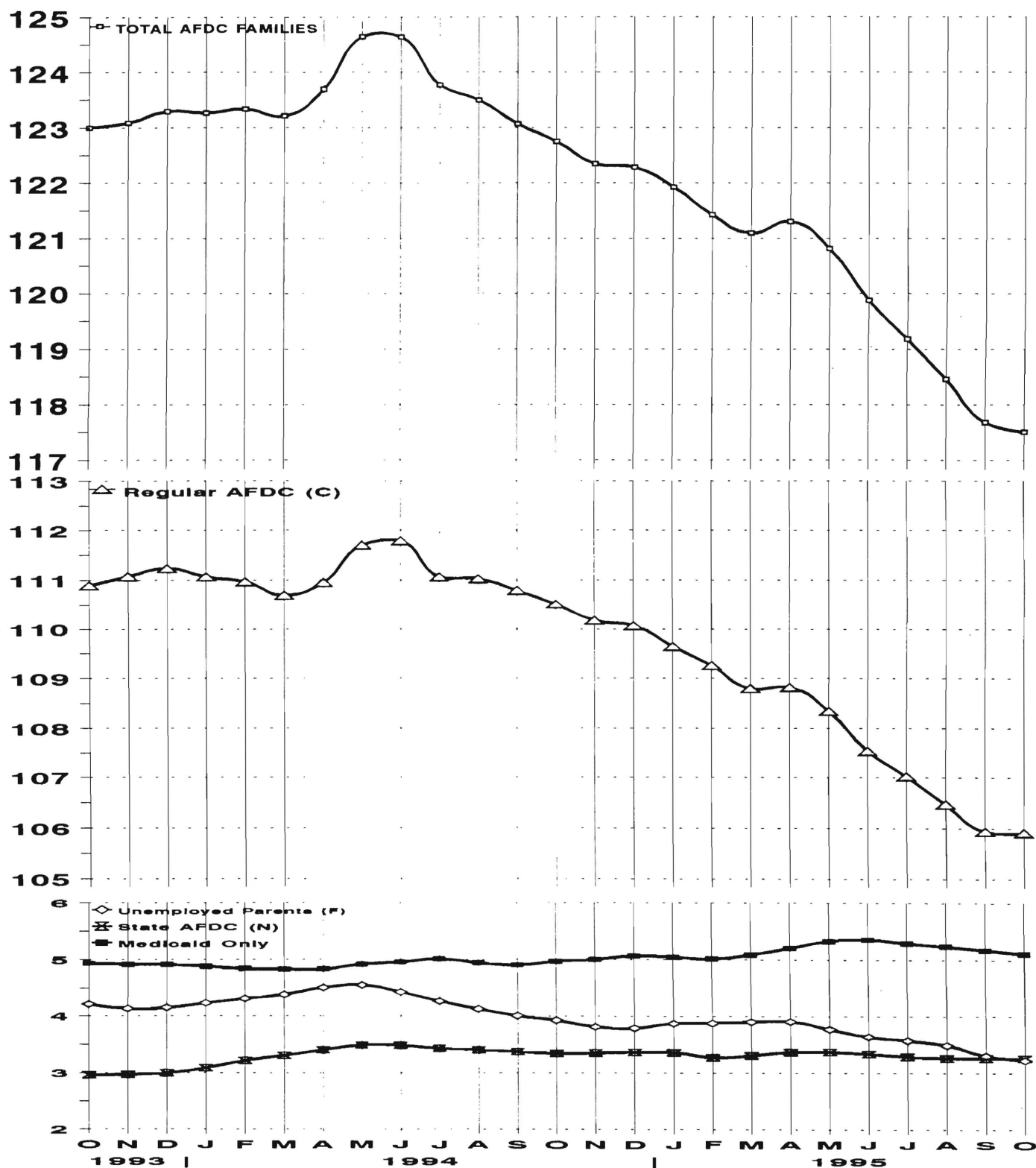
	Applications Approved	Termin- ations	Regular AFDC (C Segment)	Unemployed Parents (F)	State AFDC (N)	Medicaid Only	TOTAL AFDC
1993 Oct	5,380	5,820	110,893	4,213	2,961	4,934	123,001
Nov	6,774	6,902	111,072	4,131	2,969	4,916	123,088
Dec	5,590	5,462	111,231	4,152	2,997	4,915	123,295
AVERAGE (12 MONTHS)	5,760	5,688	110,942	4,365	2,860	5,012	123,178
1994 Jan	5,452	5,349	111,067	4,232	3,085	4,881	123,265
Feb	5,449	5,518	110,964	4,314	3,214	4,844	123,336
Mar	5,693	5,893	110,699	4,383	3,301	4,831	123,214
Apr	6,284	5,997	110,951	4,506	3,399	4,834	123,690
May	7,094	6,188	111,700	4,549	3,483	4,913	124,645
Jun	5,758	5,742	111,787	4,423	3,477	4,953	124,640
Jul	5,117	5,898	111,064	4,266	3,428	5,007	123,765
Aug	6,435	6,827	111,025	4,128	3,401	4,940	123,494
Sep	6,266	6,754	110,790	4,007	3,369	4,900	123,066
Oct	6,592	6,950	110,517	3,927	3,340	4,966	122,750
Nov	6,344	6,796	110,181	3,814	3,350	5,002	122,347
Dec	5,682	5,890	110,070	3,789	3,360	5,065	122,284
AVERAGE	6,014	6,150	110,901	4,195	3,351	4,928	123,375
1995 Jan	5,583	5,944	109,645	3,875	3,358	5,045	121,923
Feb	5,964	6,515	109,261	3,878	3,270	5,016	121,425
Mar	5,810	6,221	108,800	3,903	3,305	5,088	121,096
Apr	7,096	7,086	108,822	3,907	3,365	5,209	121,303
May	5,288	5,784	108,343	3,773	3,369	5,328	120,813
Jun	5,558	6,458	107,541	3,639	3,336	5,358	119,874
Jul	5,977	6,781	107,028	3,574	3,286	5,293	119,181
Aug	5,547	6,294	106,475	3,489	3,260	5,239	118,463
Sep	5,922	6,647	105,943	3,303	3,260	5,175	117,681
Oct	7,062	7,359	105,917	3,224	3,257	5,110	117,508
AVERAGE	5,981	6,509	107,778	3,657	3,307	5,186	119,927

Data Sources: Data is derived from NJ Division of Family Development's FAMIS report # FF-012.

GRAPH 4

Eligible Families Receiving AFDC

October 1993 through October 1995
(Thousands of Families)



New Jersey Department of Human Services
Division of Family Development

TABLE 6**FOOD STAMP Program State Summary****NUMBER OF ATP'S ISSUED TO HOUSEHOLDS, PERSONS,
ADULTS AND CHILDREN AT THE END OF THE REPORT MONTH****October 1993 through October 1995**

	HOUSEHOLDS			TOTAL	PERSONS			
	AFDC	Other low income			AFDC	Other low income	Adults	Children
1993 Oct	113,737	101,753	215,490	517,657	358,804	158,853	239,902	277,755
Nov	114,180	100,295	214,475	519,932	360,125	159,807	241,029	278,903
Dec	114,348	102,790	217,138	521,307	360,858	160,449	241,989	279,318
AVERAGE (12 MONTHS)	113,235	100,374	213,609	515,793	357,762	158,032	238,605	277,188
1994 Jan	113,984	102,590	216,574	519,549	359,422	160,127	241,575	277,974
Feb	113,804	102,843	216,647	519,760	359,227	160,533	241,993	277,767
Mar	115,730	106,160	221,890	530,892	365,132	165,760	248,219	282,673
Apr	115,661	106,454	222,115	530,591	365,241	165,350	248,331	282,260
May	115,874	106,611	222,485	530,595	364,941	165,654	248,420	282,175
Jun	115,737	106,683	222,420	529,514	364,394	165,120	248,099	281,415
Jul	115,172	105,717	220,889	526,075	362,520	163,555	246,142	279,933
Aug	114,809	106,115	220,924	524,659	361,106	163,553	246,052	278,607
Sep	114,177	105,972	220,149	521,945	358,849	163,096	244,835	277,110
Oct	114,039	106,903	220,942	522,406	358,010	164,396	245,676	276,730
Nov	114,251	107,577	221,828	524,090	358,582	165,508	246,659	277,431
Dec	114,232	107,467	221,699	523,825	358,446	165,379	246,517	277,308
AVERAGE	114,789	105,924	220,714	525,325	361,323	164,003	246,043	279,282
1995 Jan	113,691	107,493	221,184	522,125	356,763	165,362	245,837	276,288
Feb	113,830	108,421	222,251	524,344	357,419	166,925	247,107	277,237
Mar	114,339	110,279	224,618	529,456	359,404	170,052	249,994	279,462
Apr	113,588	108,991	222,579	524,102	356,717	167,385	247,367	276,735
May	113,125	109,171	222,296	522,173	355,099	167,074	246,949	275,224
Jun	112,827	109,198	222,025	521,084	354,211	166,873	246,557	274,527
Jul	111,635	107,978	219,613	515,478	350,378	165,100	243,727	271,751
Aug	111,415	109,603	221,018	516,618	349,372	167,246	245,110	271,508
Sep	110,760	109,154	219,914	513,517	347,126	166,391	243,723	269,794
Oct	110,697	110,268	220,965	514,598	346,519	168,079	244,911	269,687
AVERAGE	112,591	109,056	221,646	520,350	353,301	167,049	246,128	274,221

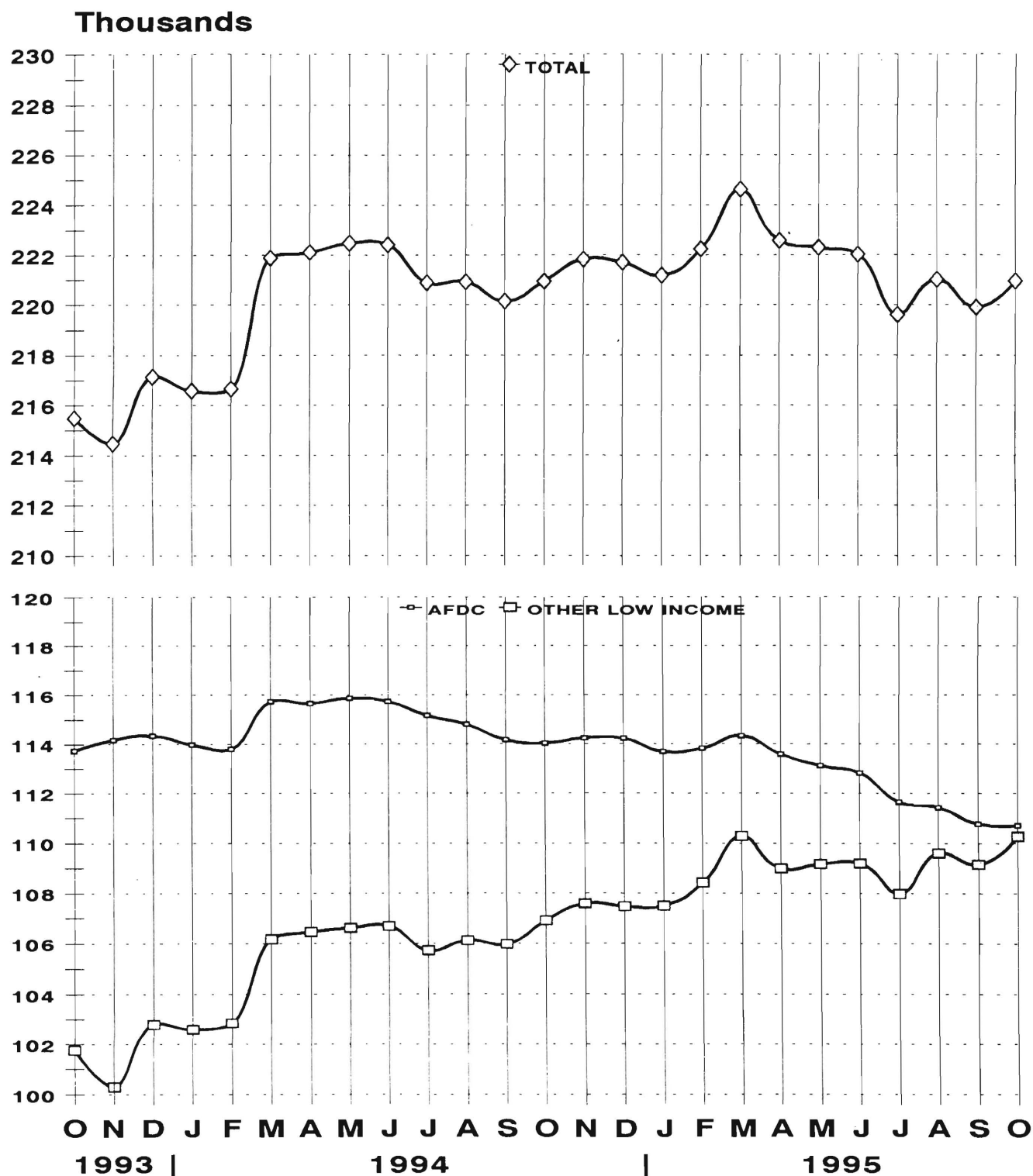
ATP - Authorization to Participate

Data Sources: Data is derived from NJ Division of Family Development's FAMIS report # FB-160.

GRAPH 5

Food Stamp Households

October 1993 through October 1995



GRAPH 6

Food Stamp Recipients

October 1993 through October 1995

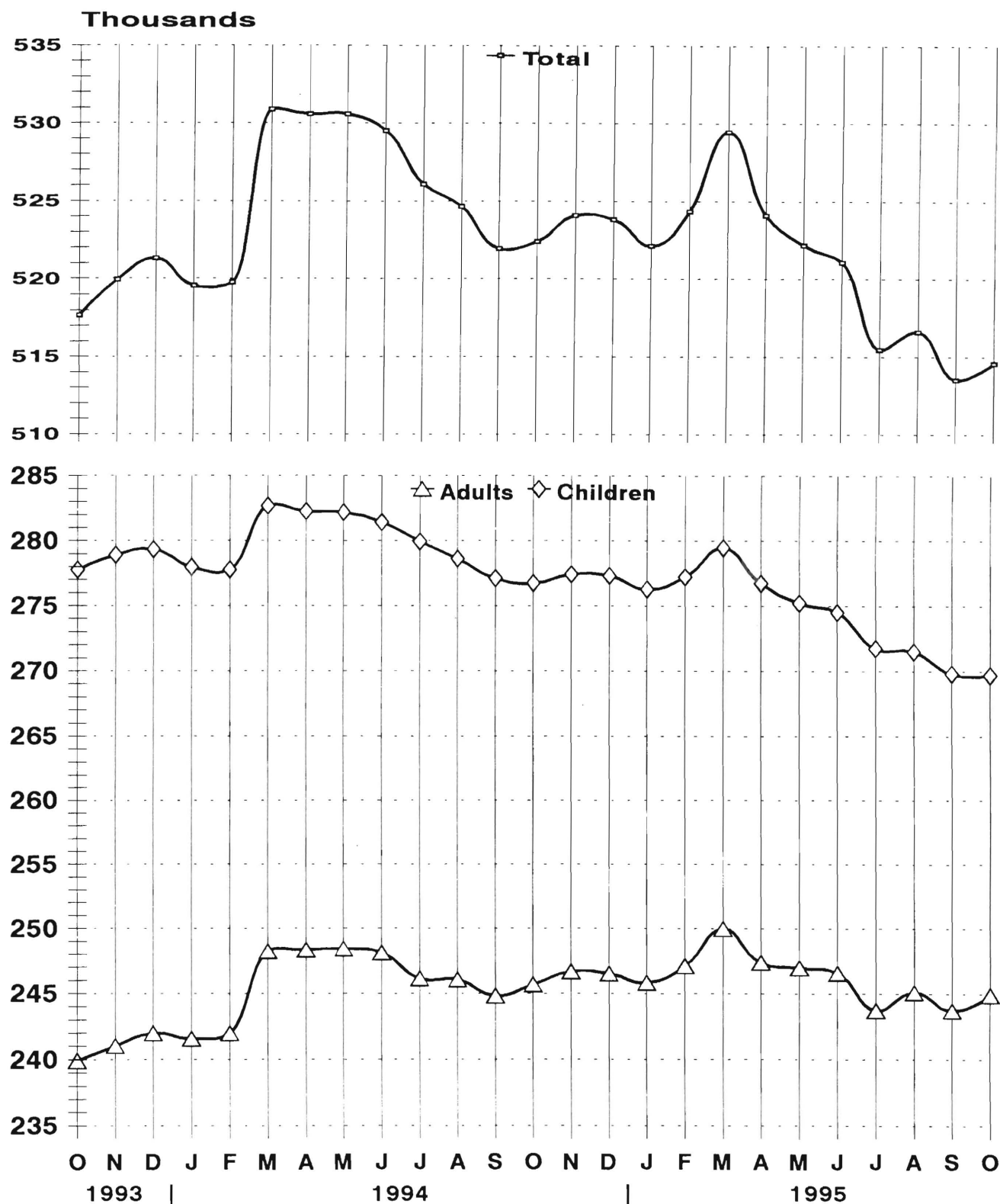


TABLE 7

EMERGENCY ASSISTANCE Program for AFDC recipients
State Summary

**NUMBER OF APPLICATIONS AND TERMINATIONS DURING REPORT MONTH,
AND NUMBER OF ELIGIBLE FAMILIES RECEIVING EMERGENCY ASSISTANCE
AT END OF REPORT MONTH**

OCTOBER 1993 through OCTOBER 1995

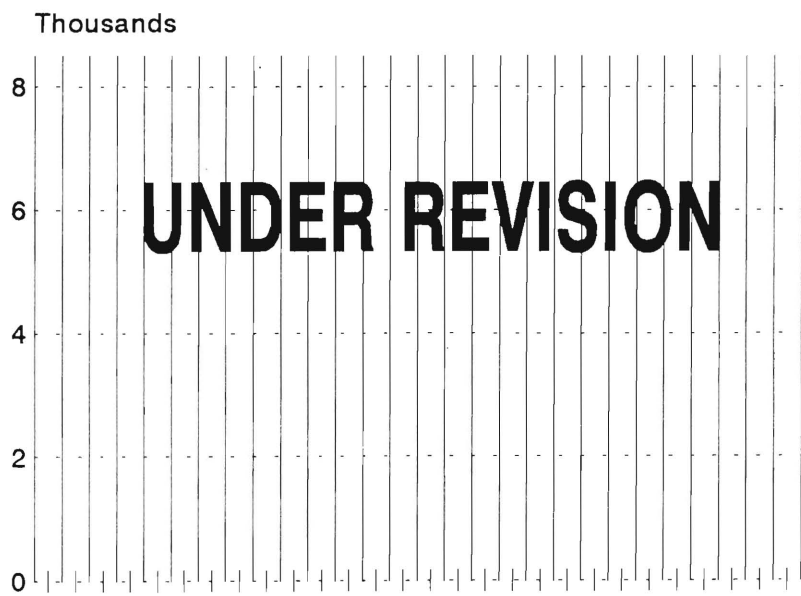
Applications Approved	Terminations	Total families receiving EA	Temporary rental assist.	Motel Housing	Emergency Shelter	Other AFDC-EA
--------------------------	--------------	--------------------------------	-----------------------------	------------------	----------------------	------------------

HISTORICAL SERIES UNDER REVISION

Data Sources: Data is compiled by County Welfare Agencies & reported to the NJ Division of Family Development on report form # PA-217.

GRAPH 7

AFDC Families Receiving Emergency Assistance
October 1993 through October 1995



New Jersey Department of Human Services
Division of Family Development

TABLE 8
JOBS/FDP PARTICIPATION RATES BY MONTH
(PERCENT)

COUNTY	APR 94	MAY 94	JUN 94	JUL 94	AUG 94	SEP 94	OCT 94	NOV 94	DEC 94	JAN 95	FEB 95	MAR 95	APR 95	MAY 95	JUN 95	JUL 95	AUG 95	SEP 95	OCT 95
ATLANTIC	34.7	36.6	31.0	26.0	24.8	33.0	39.0	38.0	32.8	34.2	39.8	46.1	46.3	44.0	37.7	31.9	33.9	46.4	54.6
BERGEN	20.7	24.2	22.9	23.5	23.0	27.6	29.3	29.7	29.7	28.6	23.9	27.3	26.9	28.3	26.5	27.0	24.8	24.2	25.5
BURLINGTON	28.6	29.6	26.8	24.7	23.7	22.7	26.2	23.9	24.4	22.9	21.8	28.5	29.2	28.6	27.1	26.9	27.7	27.6	31.5
CAMDEN	16.0	17.6	13.8	12.6	11.1	14.3	18.5	18.3	15.5	11.7	13.6	16.3	15.7	12.9	11.3	9.8	9.5	15.1	17.1
CAPE MAY	7.2	11.8	6.9	4.4	6.3	5.8	10.4	7.3	7.5	5.5	6.0	7.2	7.9	10.9	9.0	6.3	6.5	11.7	11.4
CUMBERLAND	50.8	53.2	48.3	44.7	45.1	52.5	56.4	53.7	51.5	52.2	52.1	58.6	64.1	64.0	53.8	55.3	54.6	56.9	65.9
ESSEX	5.7	6.3	6.7	6.0	5.5	7.2	8.5	8.8	8.3	7.8	8.8	11.0	13.0	15.7	16.0	15.8	16.2	17.7	20.2
GLOUCESTER	23.6	20.7	17.6	16.2	15.8	20.0	24.0	25.5	24.2	22.8	28.1	31.6	28.7	26.4	20.7	21.5	22.0	19.5	25.3
HUDSON	19.0	19.7	18.1	17.0	15.7	17.9	19.5	20.0	21.1	19.6	18.1	22.9	23.8	25.4	23.8	20.8	21.2	23.8	26.0
HUNTERDON	13.3	17.5	15.0	13.3	11.1	13.4	14.2	13.5	16.1	11.5	26.2	25.8	26.1	30.6	23.5	26.6	25.2	34.3	42.7
MERCER	26.0	27.6	26.4	28.4	28.3	27.9	30.5	30.4	30.4	28.7	27.0	32.5	31.9	33.1	28.7	27.3	26.7	27.8	30.1
MIDDLESEX	16.2	17.9	17.4	16.3	16.5	17.1	20.8	18.2	18.8	18.8	16.8	16.9	16.3	17.4	15.1	19.2	22.0	23.6	27.5
MONMOUTH	25.7	26.0	25.2	23.2	22.3	23.7	29.2	28.2	27.8	27.3	26.8	29.9	29.6	29.1	27.2	27.7	24.5	26.2	27.8
MORRIS	22.6	23.1	18.6	17.3	13.7	18.7	21.7	22.2	22.4	14.4	19.5	22.9	31.9	42.0	52.9	71.0	71.7	70.7	64.4
OCEAN	13.2	12.7	10.8	10.6	9.0	9.9	13.4	16.7	18.1	15.8	18.6	23.6	26.4	25.0	22.3	22.1	25.4	28.6	28.9
PASSAIC	26.0	29.2	26.1	27.7	24.3	25.9	31.9	33.9	33.0	32.1	31.7	35.1	33.9	37.7	33.6	34.7	32.0	34.5	37.0
SALEM	49.8	50.3	26.7	21.2	19.8	32.2	44.8	44.2	38.3	36.7	41.7	46.6	50.0	48.4	26.7	26.3	29.4	45.3	51.7
SOMERSET	37.0	37.0	33.2	33.4	26.9	45.4	48.3	49.1	47.4	54.7	48.7	62.0	61.3	68.0	48.1	46.1	40.3	57.3	59.3
SUSSEX	33.7	42.0	38.3	19.7	23.0	39.2	42.6	48.7	49.6	40.2	43.3	48.2	45.3	41.7	26.1	19.0	27.7	48.4	57.5
UNION	24.6	25.8	23.9	24.2	21.8	27.9	29.5	28.7	28.6	27.7	26.0	29.6	28.9	31.4	28.6	26.3	25.2	28.4	31.4
WARREN	37.0	57.1	63.0	61.5	71.0	72.5	65.4	52.6	52.2	47.7	46.1	50.3	47.2	48.7	51.5	38.9	37.8	32.0	41.7
STATE	18.9	20.1	18.3	17.3	16.3	19.1	21.8	21.8	21.5	20.4	20.3	23.8	24.5	25.7	23.3	22.5	22.6	25.2	27.9

GRAPH 8

JOBS/FDP PARTICIPATION RATES (%)

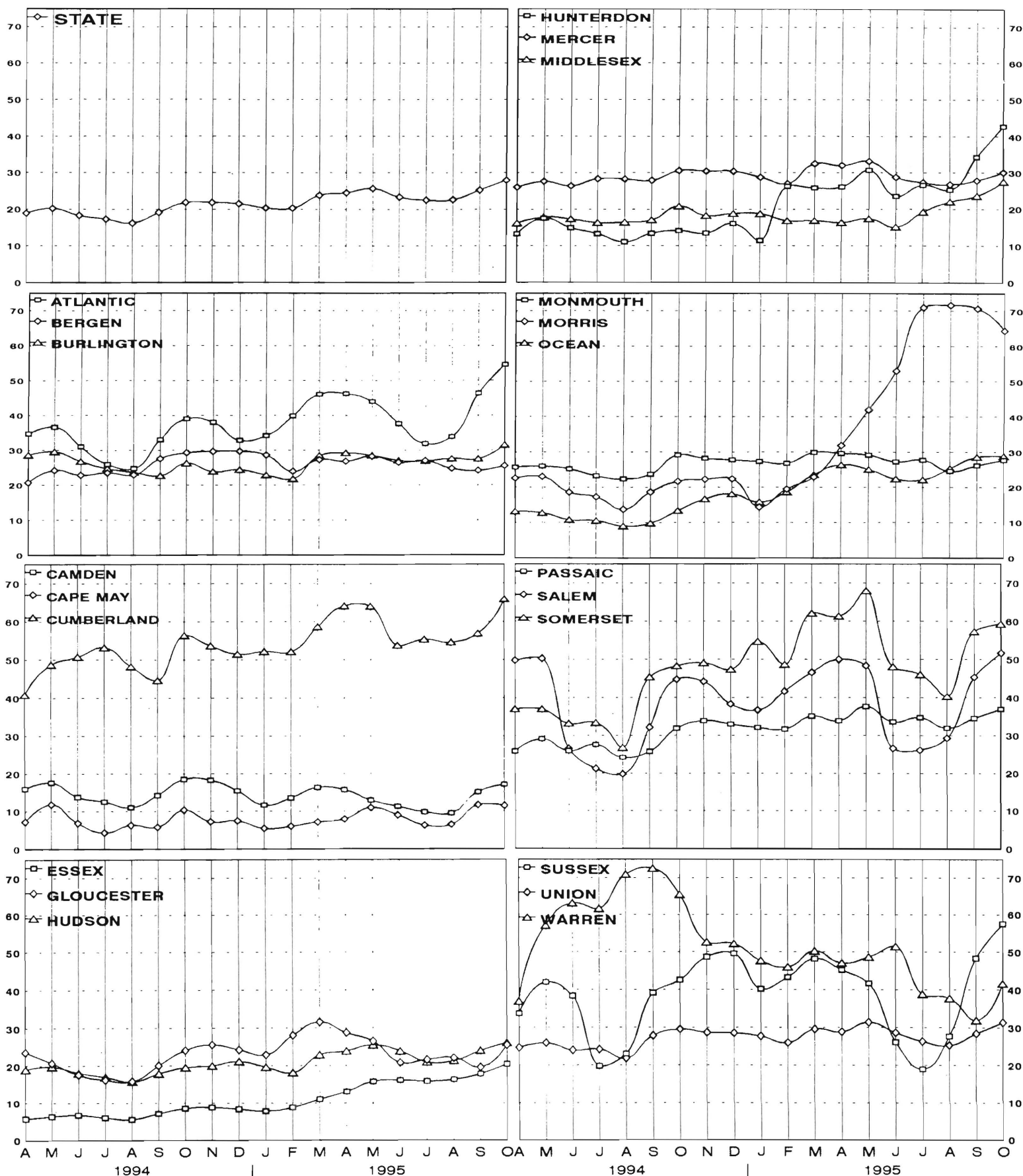


TABLE 9
GENERAL ASSISTANCE Program
State Summary

**NUMBER OF EMPLOYABLE AND UNEMPLOYABLE
RECIPIENTS DURING REPORT MONTH**

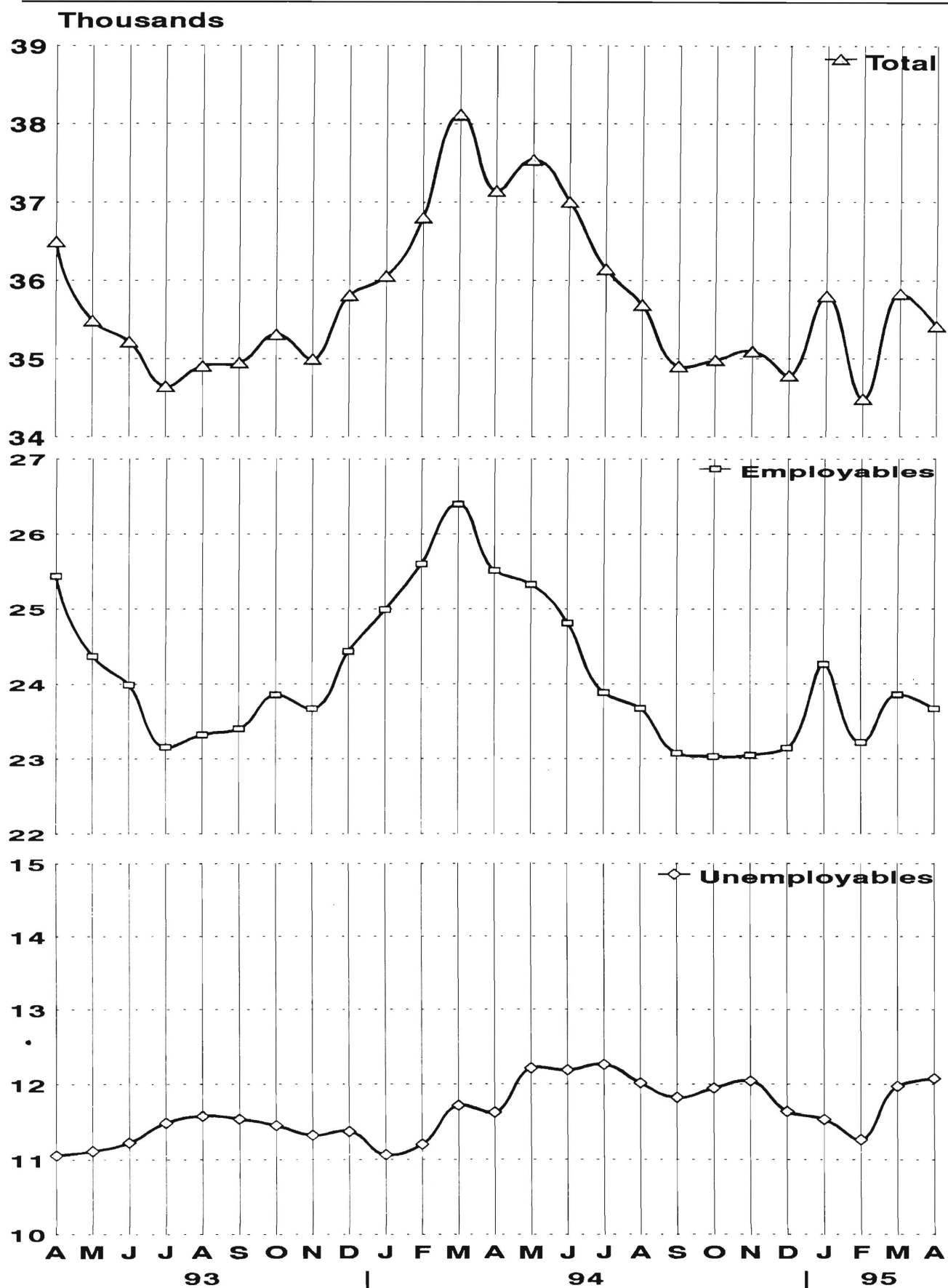
April 1993 through April 1995

		<u>Number of Persons Aided</u>		
		<u>Employables</u>	<u>Unemployables</u>	<u>Total</u>
1993	Apr	25,438	11,057	36,495
	May	24,370	11,113	35,483
	Jun	23,989	11,225	35,214
	Jul	23,156	11,488	34,644
	Aug	23,320	11,580	34,900
	Sep	23,402	11,542	34,944
	Oct	23,853	11,455	35,308
	Nov	23,668	11,324	34,992
	Dec	24,435	11,374	35,809
	AVERAGE (12 mos)	24,250	11,374	35,624
1994	Jan	24,992	11,062	36,054
	Feb	25,600	11,202	36,802
	Mar	26,397	11,719	38,116
	Apr	25,512	11,629	37,141
	May	25,327	12,212	37,539
	Jun	24,814	12,190	37,004
	Jul	23,884	12,261	36,145
	Aug	23,671	12,018	35,689
	Sep	23,075	11,825	34,900
	Oct	23,031	11,950	34,981
	Nov	23,046	12,045	35,091
	Dec	23,142	11,642	34,784
	AVERAGE	24,486	11,828	36,315
1995	Jan	24,262	11,537	35,799
	Feb	23,219	11,264	34,483
	Mar	23,855	11,976	35,831
	Apr	23,337	12,082	35,419
	AVERAGE	23,668	11,715	35,383

GRAPH 9

General Assistance Recipients

April 1993 through April 1995



New Jersey Department of Human Services

TABLE 10**CHILD SUPPORT AND PATERNITY****State Summary****Child Support and Paternity Collections****\$1000's**

COLLECTION SOURCE	Federal Fiscal Years		Percent Change
	1994	1995	1994-1995
AFDC & FOSTER CARE			
Federal Tax	\$15,170.0	\$16,106.4	6.2%
State Tax	2,169.8	1,738.0	-19.9%
Unempl. Ins. Ben.	4,081.0	4,342.6	6.4%
Income Withholding	43,696.4	45,758.7	4.7%
Other/Own Behalf	17,729.3	18,258.4	3.0%
From Other States	3,303.5	3,401.5	3.0%
For Other States	5,612.7	7,009.9	24.9%
TOTAL COLLECTION	91,762.6	96,615.6	5.3%
NON- AFDC			
Federal Tax	\$6,288.4	\$7,011.0	11.5%
State Tax	2,434.1	2,086.7	-14.3%
Unempl. Ins. Ben.	13,514.8	14,415.7	6.7%
Income Withholding	227,505.1	260,768.1	14.6%
Other/Own Behalf	151,072.8	157,100.0	4.0%
From Other States	19,761.5	20,951.4	6.0%
For Other States	21,906.2	27,714.1	26.5%
TOTAL COLLECTION	442,482.9	490,047.0	10.7%
TOTAL			
Federal Tax	\$21,458.3	\$23,117.4	7.7%
State Tax	4,603.9	3,824.8	-16.9%
Unempl. Ins. Ben.	17,595.8	18,758.4	6.6%
Income Withholding	271,201.4	306,526.8	13.0%
Other/Own Behalf	168,802.1	175,358.4	3.9%
From Other States	23,065.0	24,352.9	5.6%
For Other States	27,518.9	34,724.0	26.2%
TOTAL COLLECTION	534,245.5	586,662.6	9.8%

Collection Source: Reflects Collections Recorded by County Probation Departments

Explanatory Notes

The Department of Human Services Division of Family Development provides basic income and an opportunity to achieve self-sufficiency for individuals and families served by the Division's programs. The Division provides leadership, direction and supervision to those public agencies responsible for administering those programs and plans for and develops policies to promote self-sufficiency.

AID TO FAMILIES WITH DEPENDENT CHILDREN (AFDC) - Financial assistance for dependent children and their natural or adoptive parents, or certain other relatives recognized as taking the place of a parent.

Regular AFDC (C Segment) - assistance when only one parent is in the home due to death or absence, or both parents are in the home but at least one is incapacitated.

Unemployed Parents (F Segment) - assistance when both parents are in the home, neither is incapacitated and the primary wage earner meets the federally defined criteria for unemployment.

State AFDC (N Segment) - assistance when both parents are in the home, neither is incapacitated, and the primary wage earner does not meet the federal definition of unemployment.

Medicaid Only - families no longer receiving AFDC financial assistance but remaining eligible for Medicaid under applicable provisions which extend coverage beyond period of AFDC assistance.

FOOD STAMP PROGRAM (FS) - Authorized by Congress as a nutritional supplement program to provide low income households with more food of greater variety and better nutrition. Program eligibility is based on household income, resources, and expenses for medical, shelter, and dependent care. CWA staff refer certain recipients to the New Jersey Department of Labor for participation in the Food Stamp Employment and Training Program.

EMERGENCY ASSISTANCE (EA) - Payments to those eligible for AFDC (also for General Assistance or Supplemental Security Income, not included here), authorized during the 30 consecutive days immediately following the emergency (defined as a substantial loss of shelter, food, clothing, or household furnishings by fire, flood or other similar disaster) or if the eligible individual or family is in an imminent or actual state of homelessness.

JOBS/FDP

JOB OPPORTUNITY AND BASIC SKILLS PROGRAM (JOBS) - Federally mandated work/training program for recipients of AFDC established by the Family Support Act of 1988 under Part F of Title IV of the Social Security Act.

FAMILY DEVELOPMENT PROGRAM (FDP) - Reform legislation enacted by the State Legislature in January 1992 to: build, strengthen, and support the family unit; encourage family formation; reduce the long-term aspects of welfare dependency; look to the needs of the family unit as a whole; emphasize education and training for all family members; maximize use of educational, training and employment resources; and develop genuine private sector job opportunities.

SNAPSHOT OF ACTIVITY AT POINT IN TIME - Status of activities as of the end of the month:

Total Non-Exempt JOBS/FDP Recipients - Calculation of the number of mandatory IV-F individuals (FAMIS report # FB304).

Employment Directed Activities (EDA) - From Activities Summary Report (OMEGA report # RM064). Unduplicated count of persons participating in **Training, Education, or Job Search**.

Participants in EDA, Receiving Support Services - From Issuance Disbursement Summary (OMEGA report # RM703) Total number of active participants who show receipt of **Training Related Expenses** or **Child Care**.

Participation Rate (JOBS/FDP) - Federally mandated calculation method, dividing the number of participants whose combined and averaged weekly hours of participation in qualifying activities equals or exceeds 20 hours per week by the total number of non-exempt IV-F recipients. As of the end of the month.

ACTIVITY FOR THE MONTH - Number of participants with the indicated activity during the month:

Participants with First Case Management Interview - From Activities Summary Report (OMEGA report # RM064)

Number of Persons Employed This Month, Still Receiving AFDC - From Activities Summary Report (OMEGA report # RM064)

Number of Persons Closed on FAMIS Due to Earnings - From FAMIS report # FM463.

Post AFDC and Receiving Child Care - Persons no longer in receipt of AFDC, but still receiving child care. From Issuance Disbursement Summary (OMEGA report # RM703).

New Jersey Department of Human Services
Division of Family Development

TABLE 11**GENERAL ASSISTANCE Program**

NUMBER OF EMPLOYABLE AND UNEMPLOYABLE RECIPIENTS DURING REPORT MONTH
COUNTIES AND 21 LARGEST MUNICIPALITIES

April 1995

County	Employables	Unemployables	Total	Municipality	Employables	Unemployables	Total
ATLANTIC	1,286	546	1,832	Atlantic City	1,017	283	1,300
BERGEN	550	560	1,110	Mount Holly	196	77	273
BURLINGTON	633	417	1,050	Camden	1,906	883	2,789
CAMDEN	2,373	1312	3,685	Vineland	204	105	309
CAPE MAY	177	134	311	East Orange	556	454	1,010
CUMBERLAND	394	209	603	Irvington	255	73	328
ESSEX	6,922	2,337	9,259	Montclair	210	111	321
GLOUCESTER	214	212	426	Newark	5,370	1,453	6,823
HUDSON	1,191	1,203	2,394	Orange	396	58	454
HUNTERDON	54	55	109	Bayonne	146	71	217
MERCER	1,977	744	2,721	Hoboken	149	109	258
MIDDLESEX	666	629	1,295	Jersey City	638	531	1,169
MONMOUTH	896	804	1,700	Trenton	1,838	636	2,474
MORRIS	191	237	428	Perth Amboy	158	120	278
OCEAN	828	553	1,381	Asbury Park	181	97	278
PASSAIC	2,820	827	3,647	Long Branch	246	106	352
SALEM	177	109	286	Lakewood	374	126	500
SOMERSET	97	140	237	Passaic	653	318	971
SUSSEX	72	82	154	Paterson	1,370	156	1,526
UNION	1,745	912	2,657	Elizabeth	1,083	488	1,571
WARREN	74	60	134	Plainfield	247	96	343
NJ TOTAL	23,337	12,082	35,419	NJ TOTAL	17,193	6,351	23,544