

June 2024 Traffic Report

AVIATION DEPARTMENT (Data As Of 7/31/2024 4:41:57 PM)

REGION

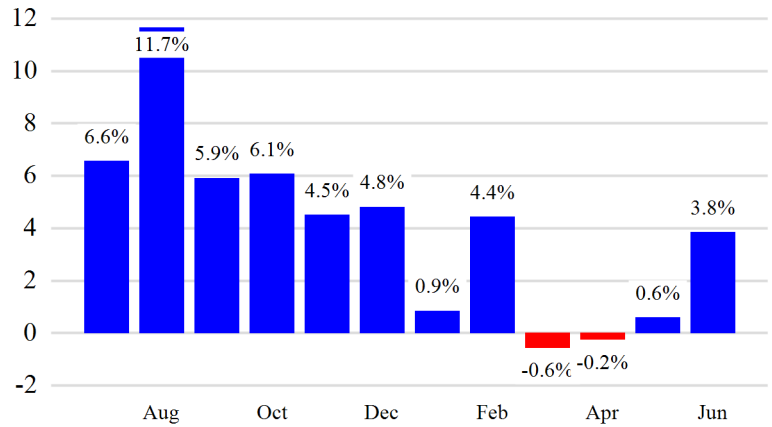


Revenue Passengers

	Curr Month	% Change
	13,011,628	3.8% ▲
Domestic	8,152,206	2.0%
International	4,859,422	7.2%
Non-Revenue	311,156	-2.5%

Load Factors	Curr Month	Avg Load Factor
Domestic	86.1%	85.4%
International	84.2%	

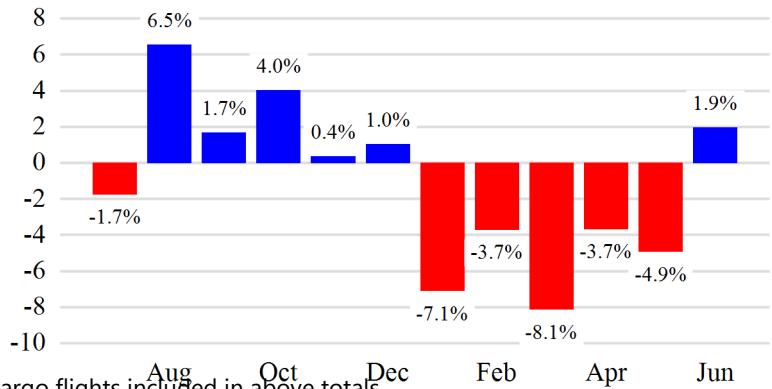
Year over Year % Change in Revenue Passengers - 12 Months



Total Flights

	Curr Month	% Change
	107,685	2.2% ▲
Excl GA	101,688	1.9% ▲
Domestic	72,700	-0.3%
International	28,988	8.1%
Gen Aviation	5,997	6.0%
Cargo Flights*	2,914	-10.1%

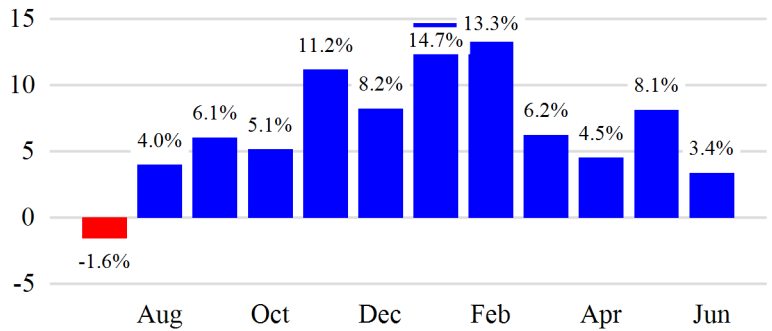
Year over Year % Change in Total Flights (Excl GA) - 12 Months



Cargo (Short Tons)

	Curr Month	% Change
	194,278	3.4% ▲
Domestic	78,011	-5.5%
International	116,267	10.3%
Mail	6,767	-20.8%

Year over Year % Change in Cargo - 12 Months



Top 5 Declines in Revenue Passengers by Airline

Airline	Pax Decline	% Decline
AMERICAN	(81,790)	-5.0%
JETBLUE AIRWAYS	(80,102)	-4.0%
ALASKA AIRLINES	(18,279)	-8.0%
ITA AIRWAYS	(12,964)	-23.0%
KUWAIT	(10,718)	-65.0%

Top 5 Increases in Revenue Passengers by Airline

Airline	Pax Increase	% Increase
DELTA	200,894	7.0%
SPIRIT AIRLINES	154,162	44.0%
UNITED	92,698	3.0%
FRONTIER AIRLINES	56,007	146.0%
NORSE ATLANTIC	31,533	57.0%

Airport Summary Statistics

JFK Summary

	Current Month	YoY %
Total Revenue Pax	5,780,257	3.0
Total Flights Including GA	41,090	1.0
Total Cargo (Short Tons)	132,490	2.8

EWR Summary

	Current Month	YoY %
Total Revenue Pax	4,285,396	2.0
Total Flights Including GA	35,177	2.0
Total Cargo (Short Tons)	59,205	4.8

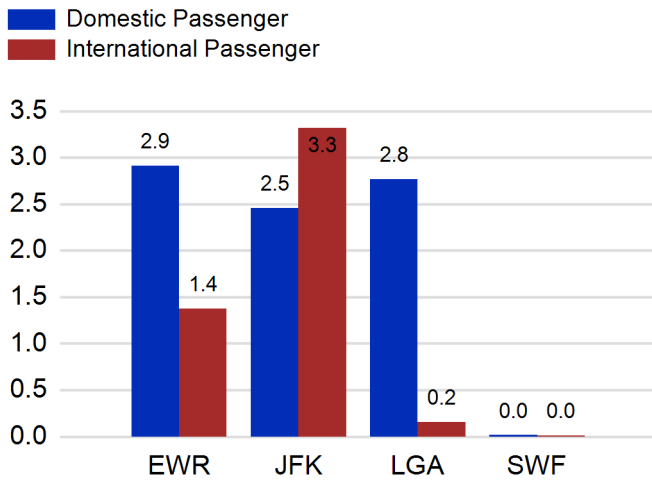
LGA Summary

	Current Month	YoY %
Total Revenue Pax	2,922,923	5.0
Total Flights Including GA	29,088	1.0
Total Cargo (Short Tons)	455	-9.0

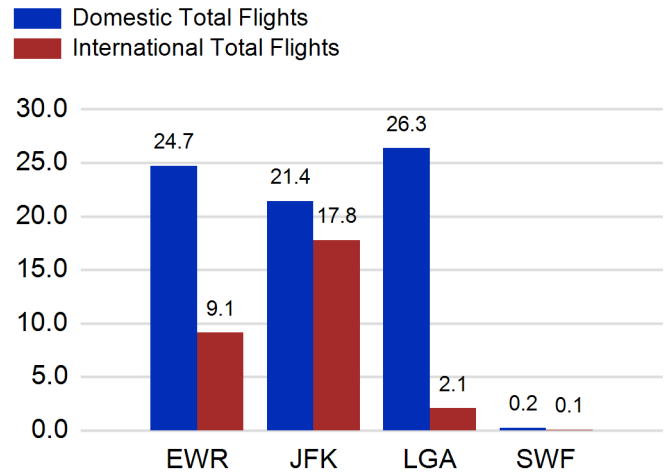
SWF Summary

	Current Month	YoY %
Total Revenue Pax	23,052	6.0
Total Flights Including GA	2,330	10.0
Total Cargo (Short Tons)	2,128	1.3

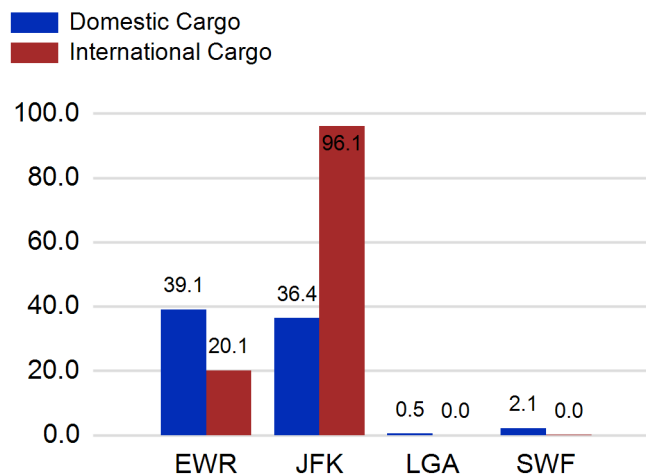
Total Passengers by Airport (Millions)



Total Flights by Airport (Thousands)



Total Cargo by Airport (Thousands of Short Tons)



12 Months Ending Passenger & Freight Statistics

Top 20 Airlines Ranking by Passengers & Freight: 12 Months Ending Jun 2024

Airline Name	Domestic	International	Total Pax	% of Tot	Airline Name	Short Tons	% of Tot
UNITED	26,845,169	8,654,116	35,499,285	24.46%	FEDERAL EXPRESS	377,503	15.72%
DELTA	28,050,626	6,408,443	34,459,069	23.74%	UNITED PARCEL	196,964	8.20%
JETBLUE AIRWAYS	13,530,261	6,995,059	20,525,320	14.14%	UNITED	182,784	7.61%
AMERICAN	13,573,432	3,458,456	17,031,888	11.73%	DELTA	120,453	5.02%
SPIRIT AIRLINES	5,496,662	0	5,496,662	3.79%	KALITTA AIR LLC	107,835	4.49%
SOUTHWEST AIRLINES	3,233,610	0	3,233,610	2.23%	ATLAS AIR	90,590	3.77%
ALASKA AIRLINES	2,235,367	0	2,235,367	1.54%	AMERICAN	79,819	3.32%
AIR CANADA	0	1,819,061	1,819,061	1.25%	AIR TRANSPORT INT'L.(BAX Inc.)	72,387	3.02%
BRITISH AIRWAYS	0	1,741,093	1,741,093	1.20%	BRITISH AIRWAYS	56,461	2.35%
AIR FRANCE	0	1,190,717	1,190,717	0.82%	CATHAY PACIFIC	53,794	2.24%
AVIANCA	0	1,083,733	1,083,733	0.75%	LUFTHANSA	52,144	2.17%
VIRGIN ATLANTIC	0	1,076,887	1,076,887	0.74%	KOREAN	50,629	2.11%
EMIRATES AIRLINES	0	1,056,941	1,056,941	0.73%	CARGOLUX AIRLINES	48,155	2.01%
LUFTHANSA	0	958,286	958,286	0.66%	CHINA AIRLINES	43,425	1.81%
TURKISH AIRLINES	0	782,759	782,759	0.54%	VIRGIN ATLANTIC	42,913	1.79%
AER LINGUS	0	756,731	756,731	0.52%	ABX AIR INC	38,269	1.59%
EL AL	254	733,213	733,467	0.51%	TURKISH AIRLINES	36,426	1.52%
FRONTIER AIRLINES	599,655	0	599,655	0.41%	AIR CHINA	36,397	1.52%
QATAR AIRWAYS	0	591,719	591,719	0.41%	CHINA CARGO AIRLINES	34,373	1.43%
SAS	0	582,572	582,572	0.40%	ASIANA	30,925	1.29%

Passengers & Freight by Market - 12 Months Ending

Market	Passengers	Freight (Short Tons)
TRANSATLANTIC	27,102,504	869,405
CANADA	4,284,490	5,824
CARIBBEAN + BERMUDA	9,039,460	10,670
CENTRAL AND SOUTH AMERICA	4,831,833	62,779
DOMESTIC	91,741,630	1,011,055
MEXICO	2,519,989	13,213
TRANSPACIFIC	3,166,521	419,268
PUERTO RICO	2,472,957	8,575

Additional Data

Airline Schedules (ADI): Non-Stop Destinations

	Region	Flights (Daily)	Cities
Domestic	Domestic	2366.2	111
	Puerto Rico	42.2	3
	Total	2,408.4	114.00
International	Canada	185.2	8
	Caribbean & Bermuda	173.3	23
	Central & South America	86.3	19
	Mexico	47.5	6
	Transatlantic	421.2	66
	Transpacific	39.5	12
	Total	953.0	134.00
	Total	3,361.4	248.00

Airline Schedules (ADI): Carriers & Aircraft Type

	Aircraft Type	Flights (Daily)	Carriers
Domestic	Commuter	897.6	4
	Narrow Body	1469.2	11
	Wide Body	41.6	3
Total	Total	2,408.4	18.00
International	Commuter	162.0	5
	Narrow Body	369.9	22
	Wide Body	421.1	62
	Total	953.0	89.00
Total	Total	3,361.4	107.00

Passenger Demographics (ACI ASQ Surveys - 2023)

Please refer to previous month's MATR for ACI ASQ Surveys results

Ground Transportation

	Curr Month	% Change
<i>Paid Parked Cars</i>	366,452	-3.6
<i>GTC Bookings</i>	0	
<i>Airport Coach Passengers</i>	40,280	38.6
<i>Taxis Dispatched</i>	331,396	-12.6

	Curr Month	% Change
<i>Total Air Train Passengers</i>	2,866,053	2.3
<i>Paid Howard Beach Passengers</i>	155,032	5.2
<i>Paid Jamaica Passengers</i>	692,457	36.6
<i>Paid EWR Passengers</i>	243,306	0.2
<i>On-Airport (Unpaid) Passengers</i>	1,775,258	-6.7

Airlines for American Carriers (USA)

	Curr Month	% Change
<i>Freight:revenue ton miles (000)</i>	0	

Regional Airports: Other

	Curr Month	% Change
<i>TEB flight movements</i>	14,568	-3.8
<i>ISP Total passengers</i>	111,696	8.2
<i>HPN Total passengers</i>	184,071	-4.2