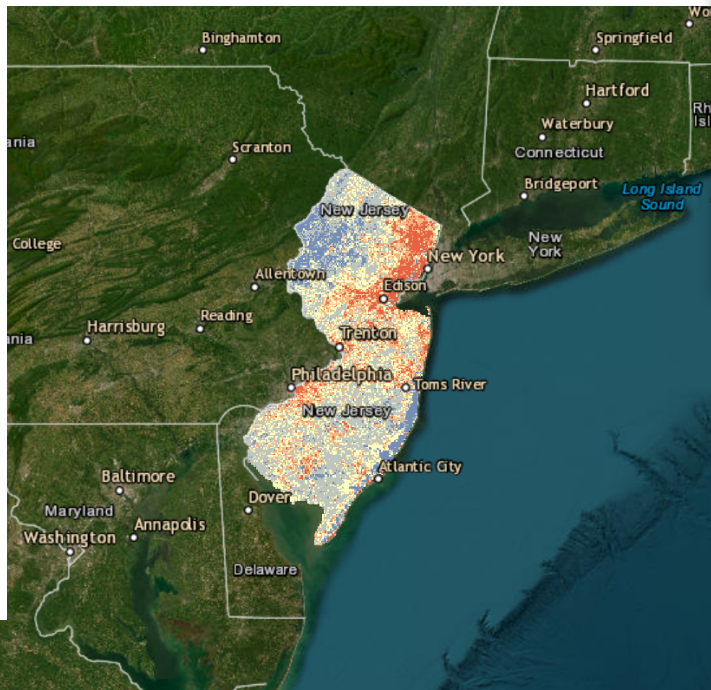




The Urban Heat Island Effect and Land Surface Temperature in New Jersey

Land Surface Temperature (Summer 2022)

- 113 to 162 °F
- 104 to 113 °F
- 96 to 104 °F
- 89 to 96 °F
- 48 to 89 °F



Map Layers

- County Boundaries of NJ
- Municipal Boundaries of NJ
- Overburdened Communities (2021)
- Land Surface Temperature (Summer 2022)