

2
0
0
5



New Jersey Agricultural Statistics Service

FARM FACTS

"FACT FINDERS FOR AGRICULTURE"

New Jersey
Agricultural
Statistics Service
P.O. Box 330
Phone: 1(800) 328-0179
Fax: 1 (800) 625-7581
www.nass.usda.gov/nj/

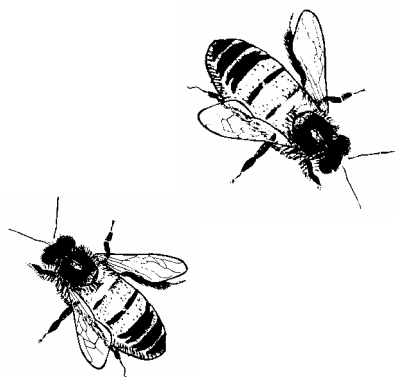
Volume: 05 Number: 03

Date: March 25, 2005

New Jersey Honey Production

New Jersey honey production in 2004 from producers with five or more colonies totaled 324,000 pounds, up 71 percent from 2003. The number of colonies, at 12,000, was up 2,000 colonies from 2003. Honey stocks on December 15, 2004, amounted to 45,000 pounds, down 56,000 pounds from 2003.

The average price received for honey sold during 2004 was \$1.38 per pound, down 14 percent from 2003. The value of the 2004 honey crop was \$447,000, up 47 percent from the previous year.



United States Honey Production

Honey production in 2004 from producers with five or more colonies totaled 184 million pounds, up 1 percent from 2003. There were 2.56 million colonies producing honey in 2004, down 2 percent from 2003. Yield per colony averaged 71.8 pounds, up 3 percent from the 69.9 pounds in 2003. Colonies which produced honey in more than one state were counted in each state where the honey was produced, therefore yields per colony may be understated. Colonies were not included if honey was not harvested. Producer honey stocks were 61.2 million pounds on December 15, 2004, up 50 percent from a year earlier. Stocks held by producers exclude stocks held under the commodity loan program.

Honey prices decreased during 2004 to \$1.09 per pound, down 22 percent from \$1.39 per pound in 2003. Prices are based on retail sales by producers and sales to private processors and cooperatives. State level honey prices reflect the portions of honey sold through retail, co-op and private channels. U.S. honey prices for each color class are derived by weighing quantities sold for each marketing channel at the U.S. level. Honey prices for 2004 were lower than the previous year for all color classes except the All Other Honey, Area Specialties class. Prices for the 2003 honey crop reflect honey sold in 2003 and 2004.

Honey: Number of Colonies, Yield, and Production, by Selected States and United States, 2003 and 2004 1/

Selected States	Number of Colonies		Yield Per Colony		Production	
	2003	2004	2003	2004	2003	2004
	<i>1,000 Colonies</i>		<i>Pounds</i>		<i>1,000 pounds</i>	
New Jersey	10	12	19	27	190	324
New York	67	64	72	67	4,824	4,288
Pennsylvania	27	30	50	54	1,350	1,620
United States	2,599	2,556	70.0	71.8	181,727	183,582

Honey: Stocks, Price, and Value by Selected States and United States, 2003 and 2004 1/

Selected States	Stocks, December 15 2/		Average Price Per Pound 3/		Value of Production	
	2003	2004	2003	2004	2003	2004
	<i>1,000 Pounds</i>		<i>Cents</i>		<i>1,000 dollars</i>	
New Jersey	101	45	160	138	304	447
New York	1,640	1,887	136	133	6,561	5,703
Pennsylvania	419	810	144	138	1,944	2,236
United States	40,785	61,222	138.7	108.5	253,106	201,790

1/ For producers with 5 or more colonies. Colonies which produced honey in more than one state were counted in each state.

2/ Stocks held by producers.

3/ Prices weighted by sales.

2004 New Jersey Acreage, Production, Price, and Value

Barley: Barley planted and harvested acreage decreased by 1,000 acres from 2003 to 3,000 and 2,000, respectively. Yield was 63 bushels per acre, an increase of 18 bushels above last year's. Production in 2004 decreased by 7 percent to 126,000 bushels. The prices received by growers increased by 20 cents from \$1.95 per bushel in 2003 to \$2.15 per bushel in 2004. The value of barley produced increased by 3 percent from \$263,000 in 2003 to \$271,000 in 2004.

Corn: Corn planted in 2004 totaled 86,000 acres, 72,000 of which were harvested for grain. Yield increased 30 bushels to 143 bushels per acre from the previous year's yield of 113 bushels per acre. Production totaled 10.3 million bushels, up 49 percent from 2003. Growers received \$2.20 per bushel for their grain, a decrease of 61 cents from 2003's price of \$2.81 per bushel. The total crop value for corn for grain increased 17 percent from \$19.4 million in 2003 to \$22.7 million in 2004.

Hay: All hay harvested acres was unchanged at 120,000 acres in 2004. Alfalfa hay and other hay acres remained unchanged from last year, at 30,000 and 90,000 acres, respectively. Yield per acre of alfalfa hay increased by .20 ton to 3.70 tons per acre, and the yield per acre of other hay increased by .10 ton to 1.90 tons per acre. The overall hay yield was 2.35 tons per acre. Alfalfa production was 111,000 tons and other hay production was 171,000 tons; the resulting total hay production was 282,000 tons. The season average price for all hay decreased \$5.00 per ton from \$125.00 per ton in 2003 to \$120.00 per ton in 2004. Overall, total hay crop value increased by 11 percent in 2004 to \$37.7 million.

Potatoes: Potatoes planted acreage decreased by 500 acres to 2,300 acres in 2004. Harvested acreage also decreased 500

acres from 2,700 acres to 2,200 acres in 2004. Yield was 270 hundredweight per acre, an increase of 20 hundredweight from 2003. Production was 594,000 hundredweight in 2004 compared with 675,000 hundredweight in 2003. The total crop value decreased by 7 percent from \$3.85 million in 2003 to \$3.56 million in 2004.

Soybeans: Soybean planted and harvested acreage increased by 15,000 acres to 105,000 and 103,000, respectively. Soybean yield was up 8 bushels from 2003's yield of 34 bushels per acre to 42 bushels per acre in 2004. Production increased to 4.33 million bushels in 2004 from 2.99 million bushels in 2003. The prices received by growers decreased by \$2.05 from \$7.35 per bushel in 2003 to \$5.30 per bushel in 2004. The total crop value increased by 4 percent to \$22.9 million.

Sweet Potatoes: Sweet potato planted and harvested acreage increased 100 acres each from 2003, to 1,200 acres in 2004. Yield was 140 hundredweight per acre, an increase of 15 hundredweight over last year's. Production in 2004 increased by 22 percent to 168,000 hundredweight. The prices per hundredweight decreased by 40 cents to \$25.40 per hundredweight in 2004.

Wheat: The 28,000 acres planted to winter wheat in 2004 were 3,000 acres less than in 2003. Harvested acreage was set at 24,000, a decrease of 2,000 acres below 2003's harvested acres. Yield at 47 bushels per acre was 5 bushels more than the previous year's. Production at 1.13 million bushels was up 3 percent from 2003. The season average price of \$3.30 per bushel was 20 cents more than the price in 2003. The total crop value increased by 10 percent to \$3.72 million.

Field Crops: 2004 New Jersey Acreage, Yield, Production, Price, and Value of Production

Crop	Unit	Acres		Yield per Acre	Production	Season Average Price	Value of Production
		Planted	Harvested				
		1,000	1,000	Units	1,000 Units	Dollars Per Unit	\$1,000
Barley	bu	3	2	63	126	2.15	271
Corn for grain 1/	bu	86	72	143	10,296	2.20	22,651
Hay, All	ton		120	2.35	282	120.00	37,725
Alfalfa Hay	ton		30	3.70	111	155.00	17,205
Other Hay	ton		90	1.90	171	120.00	20,520
Potatoes	cwt	2.3	2.2	270	594	6.00	3,564
Soybeans	bu	105	103	42	4,326	5.30	22,928
Sweet Potatoes	cwt	1.2	1.2	140	168	25.40	4,267
Winter Wheat	bu	28	24	47	1,128	3.30	3,722

1/ Planted acres for corn includes acres planted for all purposes

Crop Values: Summary for Selected States and United States, 2004

State	Field and Misc Crops	Fruit and Nuts	Commercial Vegetables	Total Value of Principal Crops
		\$1,000	\$1,000	\$1,000
Delaware	119,741	---	29,801	149,542
Maryland	374,121	6,775	36,641	417,537
New Jersey	95,128	87,881	114,601	297,610
Pennsylvania	1,381,073	97,193	81,357	1,559,623
United States	78,004,294	14,621,703	11,207,834	103,833,831

2003-2004 Wheat County Estimates, New Jersey

County	Acres Planted For All Purposes		Acres Harvested		Yield Per Acre (Bushels)		Production (Bushels)	
	2003	2004	2003	2004	2003	2004	2003	2004
District 20 (North)								
Hunterdon	3,700	2,900	3,000	2,500	43.0	45.0	129,000	112,500
Somerset	1,200	1,900	1,100	1,700	41.0	47.0	45,100	79,900
Warren	1,500	1,500	1,400	1,300	43.0	46.0	60,200	59,800
District 50 (Central)								
Burlington	2,700	3,400	2,400	2,900	48.0	49.0	115,200	142,100
Middlesex	1,000	1/	900	1/	45.0	1/	40,500	1/
Monmouth	1,500	1,200	1,300	1,000	47.0	48.0	61,100	48,000
District 80 (South)								
Cumberland	6,000	5,700	4,600	4,800	41.0	49.0	188,600	235,200
Gloucester	4,000	3,300	3,300	2,800	40.0	47.0	132,000	131,600
Salem	7,200	7,000	6,300	6,200	40.0	46.0	252,000	285,200
Other Counties 2/	2,200	1,100	1,700	800	40.2	42.1	68,300	33,700
State	31,000	28,000	26,000	24,000	42.0	47.0	1,092,000	1,128,000

1/ Included in other counties.

2/ Other counties could have come from any of the districts.

2003-2004 Barley County Estimates, New Jersey

County	Acres Planted For All Purposes		Acres Harvested		Yield Per Acre (Bushels)		Production (Bushels)	
	2003	2004	2003	2004	2003	2004	2003	2004
District 80 (South)								
Cumberland	600	1/	500	1/	42.0	1/	21,000	1/
Gloucester	800	800	700	600	48.0	61.0	33,600	36,600
Salem	1,300	1,200	1,000	800	46.0	65.0	46,000	52,000
Other Counties 2/	1,300	1,000	800	600	43.0	62.3	34,400	37,400
State	4,000	3,000	3,000	2,000	45.0	63.0	135,000	126,000

1/ Included in other counties.

2/ Other counties could have come from any of the districts.

Northeast II Region Farm Labor

There were 18,000 hired workers on the Northeast II Region farms and ranches during the week of January 9-15, 2005, down 5 percent from a year ago. States included in the Northeast Region II are Delaware, Maryland, New Jersey, and Pennsylvania. Hours worked during the reference week averaged 33.7 hours, down 3.5 hours from the previous year.

Farm operators in the Northeast Region II paid their hired workers an average wage of \$9.66 per hour during the January 2005 reference week, up 40 cents from a year earlier. Field workers received an average of \$8.47 per hour, down 32 cents from last January, while livestock workers earned \$8.76 per hour compared with \$7.73 a year earlier.

In New Jersey, during the reference week, temperatures were above normal most of the week in most localities. There were measurable amounts of rainfall across most of the state.

At the U.S. level, farm operators paid their hired workers an average wage of \$9.81 per hour, 15 cents more than the Northeast Region II producers paid. There were 574,000 hired workers on farms across the nation. The number of hours worked during the reference week averaged 36.8 hours compared to 33.7 hours in Northeast Region II.

Farm Labor & Wage Rates: Northeast II Region and United States

Items	Northeast II 1/			United States		
	January 2004 2/	October 2004 2/	January 2005 2/	January 2004 2/	October 2004 2/	January 2005 2/
Thousand workers				Thousand workers		
Hired Workers 3/	19	35	18	662	851	574
150 Days or More	16	28	14	549	606	478
149 Days or Less	3	7	4	113	245	96
Per Week				Per Week		
Average Hours (Hired Farm Workers)	37.2	41.2	33.7	38.1	40.5	36.8
Per Hour				Per Hour		
Average Wage Rate (All Hired Farm Workers)	\$9.26	\$9.59	\$9.66	\$9.41	\$9.32	\$9.81
By Type of Workers						
Field	\$8.79	\$8.84	\$8.47	\$8.39	\$8.62	\$8.73
Livestock	\$7.73	\$8.90	\$8.76	\$8.83	\$8.91	\$9.19

1/ Delaware, Maryland, New Jersey, and Pennsylvania.

2/ Month refers to the week containing the 12th day of the month.

3/ Excludes agricultural service workers.

February Farm Prices Received Index Up 1.8 Percent From Last Month

The preliminary All Farm Products Index of Prices Received by Farmers in February, at 113, based on 1990-92=100, is 1.8 percent above the January Index. The Crop Index is up 5.0 percent while the Livestock Index is down 0.8 percent. Producers received higher prices for tomatoes, oranges, broccoli, and celery. Lower prices were received for corn, dairy, hogs, and soybeans. The seasonal change in the mix of commodities farmers sell, based on the past 3-year average, also affects the overall index. Increased average marketings of dairy, cattle, broilers, and strawberries offset decreased marketings of corn, soybeans, tobacco, and wheat.

This preliminary All Farm Products Index is down 2.6 percent from February 2004. The Food Commodities Index, at 117, is 1.7 percent above last month's, but unchanged from February 2004.

Prices Paid Index Unchanged

The February Index of Prices Paid for Commodities and Services, Interest, Taxes, and Farm Wage Rates (PPITW) is 134 percent of the 1990-92 average. The index is unchanged from January, but 2.3 percent above February 2004. Lower prices in February for self-propelled machinery, feed grains, and LP gas were offset by higher prices for feed concentrates, complete feeds, feed supplements, and other machinery.

Average Prices Received by Farmers: United States

Item	Entire Month		Preliminary
	Feb 2004	Jan 2005	Feb 2005
-- Dollars --			
Field Crops			
Barley, per bushel	2.73	2.42	2.48
Corn, per bushel	2.61	2.12	2.02
Hay, all, baled, per ton ^{1/}	81.20	84.20	84.70
Soybeans, per bushel	8.28	5.57	5.39
Fruit, fresh			
Apples, per lb ^{2/}	.300	.216	.208
Strawberries, per cwt	127.00	140.00	121.00
Vegetables, fresh			
Corn, Sweet, per cwt	20.70	20.30	27.50
Lettuce, per cwt	19.80	11.60	10.60
Tomatoes, per cwt	36.30	18.20	35.90
Livestock and Livestock Products			
Beef Cattle, per cwt	78.50	89.40	89.60
Steers and Heifers, per cwt	82.30	94.40	93.80
Cows, per cwt ^{3/}	46.00	50.50	52.80
Calves, per cwt	111.00	125.00	128.00
Broilers, live, per lb ^{4/}	.470	.430	.430
Eggs, all, per dozen ^{5/}	.875	.558	.549
Milk, all, per cwt ^{6/ 7/}	13.60	15.90	15.40

^{1/} Mid-month price.

^{2/} Equivalent packinghouse-door returns for CA, MI, and NY (apples only), and WA (apples, peaches, and pears). Prices as sold for other states.

^{3/} Beef cows and cull dairy cows sold for slaughter.

^{4/} Equivalent liveweight returns to producers for most states. Includes growers and contractors.

^{5/} Mid-month price.

^{6/} Before deductions for hauling. Includes quality, quantity, and other premiums. Excludes hauling subsidies.

^{7/} February 2005 fat test percent: all milk 3.73, fluid milk 3.73, and mfg grade 3.89.



To obtain other agricultural statistics, visit the New Jersey Agricultural Statistics Service at www.nass.usda.gov/nj/ or call 1-800-328-0179.



You are here: [Home](#) / [Statistics by State](#) / [New Jersey](#)

Search NASS

- [Advanced Search](#)
- [Search Tips](#)

Browse NASS by Subject

- [Crops and Plants](#)
- [Demographics](#)
- [Economics and Prices](#)
- [Environmental](#)
- [Livestock and Animals](#)
- [Charts and Maps](#)
- [Research and Science](#)
- [Education and Outreach](#)

Statistics by State

New Jersey office of USDA's NASS



USDA's NASS New Jersey Field Office is operated in cooperation with the New Jersey Department of Agriculture.

New Jersey Statistics

Quick Stats (ag statistics by state and county)

The Quick Stats database application provides the most up-to-date statistics for the U.S., as well as all states and counties, including all revisions. Press "more" to continue.

[More](#)

- [New Jersey Agricultural Overview](#)
- [Census of Agriculture for New Jersey](#)

New Jersey Publications

[More](#)

[Go](#)

I Want To...

- [Search for New Jersey Data and Statistics](#)
- [Contact the New Jersey Field Office](#)
- [Subscribe to NJ reports](#)
- [Make sure I'm counted](#)
- [Learn About the New Jersey Field Office](#)

More State Features

- [Current Releases](#)
- [Kid's Activity Book](#)

For questions, comments and concerns, please email nass-nj@nass.usda.gov or call (609) 292-6385.