

682

974.905

044.4

C.1

DEPARTMENT OF HUMAN SERVICES

INTER-OFFICE COMMUNICATION

DATE November 1, 2001

TO James W. Smith, Jr.
Acting Commissioner



FROM David C. Heins, Director
Division of Family Development

NOV 29 2001

SUBJECT CURRENT PROGRAM STATISTICS

Attached please find CURRENT PROGRAM STATISTICS for August 2001. Included are TANF-oriented data, and the WFNJ Statistical Summary. Some items of interest include:

- The TANF caseload continues to decline. Since August of 2000 there has been a decrease of 9.5%.
- Food Stamp households decreased by over 3,500 since August 2000.
- For GA, recipient figures reported are for June 2001, which are 2.4% above June 2000.

Should you have any questions regarding this report, please do not hesitate to call me at 6-2401, David Karwoski at 6-2273, or Janet Taylor at 6-2277.

DCH:Jet:t

Attachments

- C Ciro Scalera
- Ginger Schnorbus
- Barbara DeGraaf
- Jacqueline Tencza
- Laurie Facciarossa

**State of New Jersey
Department of Human Services
Division of Family Development**

CURRENT PROGRAM STATISTICS



**August 2001
David C. Heins, Director**

CURRENT PROGRAM STATISTICS

August 2001

TABLE OF CONTENTS	Page
Highlights of Current Program Statistics	1-3
Statistics by County, August 2001	
Table 1 TANF	4
Graph 1 Total TANF Families	4
Table 2 Food Stamp Program	5
Graph 2 Food Stamp Households/Persons	5
Table 3 TANF/SSI Emergency Assistance Program	6
Graph 3 TANF Families Receiving Emergency Assistance	6
Table 4 WFNJ Statistical Summary	7
State Summary, 1999 - 2001	
Table 5 TANF, August 1999 - August 2001	8
Graph 4 Families Receiving TANF , 8/99 – 8/01	8
Table 6 Food Stamp Program, August 1999 - August 2001	9
Graph 5 Food Stamp Households 8/99 - 8/01	9
Graph 6 Food Stamp Recipients 8/99 - 8/01	10
Table 7 TANF Emergency Assistance Program, August 1999 - August 2001	11
Graph 7 TANF Families Receiving Emergency Assistance, 8/99 – 8/01	11
Table 8 TANF Participation Rates, by County and Statewide June – August 2001	12
Graph 8 TANF Participation Rates 8/01	13
Table 9 General Assistance, and GA Emergency Assistance, June 1999 – June 2001	14
Graph 9 General Assistance Recipients, 6/99 - 6/01	14
Table 10 Child Support and Paternity Distributions, FFY 2001	15
Explanatory Notes	16-17
Supplement	
Table 11 WFNJ General Assistance Recipients and EA Payments by County, June 2001	18
Table 12 WFNJ Child Support Cases Remaining Open, June 2001	19

Highlights of **CURRENT PROGRAM STATISTICS**

TANF

(Tables 1 and 5, Graphs 1 and 4)

[The number of single parent families is reduced by the number of companion cases listed for payment on the source table FF-012, to avoid double counting.]

As of August 2001, 41,849 eligible families in New Jersey were receiving TANF cash assistance:

- 41,154 single head of household families
- 695 two-parent families.

The largest number of TANF families receiving cash assistance, by county:

Essex — 13,199, Hudson — 6,455, Camden — 4,345, Passaic — 3,186 Union — 2,647

The number of TANF cash assistance families in the other 16 counties ranged from:

- 37 families in Hunterdon County to 2,039 in Mercer County,
- with eleven counties below 1000 families

There were 14,744 fewer eligible TANF families receiving cash assistance in August 2001 than in August 1999, a decline of 26.1 percent.

- **Single head families:** 14,119 below two years ago in August 1999, a drop of 25.5%.
- **Two parent families:** declined by 625 or 47.3 percent from August 1999.

FOOD STAMP PROGRAM

(Tables 2 and 6, Graphs 2, 5, and 6)

At the end of August 2001, 133,072 households participated in the Food Stamp Program.

- **TANF:** 32,635 households with 104,260 persons.
- **Other low income:** 100,437 households with 183,149 persons.
- **Total persons:** 287,409, including 141,585 adults and 145,824 children
- **By County:** 56.1 percent of the households were in:

Essex	30,105
Hudson	18,965
Passaic	13,777
Camden	11,808

Two years ago in August 1999, 149,294 households participated in Food Stamps in New Jersey. Over the next two years the number declined by 16,222, or 10.9 percent, to 133,072 by August 2001.

- TANF(FS) households steadily declined by 12,062 from 44,697 in August 1999 to 32,635 two years later. There were 104,597 Other Low Income households in August 1999 and 4,160 less two years later.
- Total FS Recipients: were 334,324 in August 1999, and declined to 287,409 by August 2001, a drop of 46,915, or 14.0 percent.
- Adult FS Recipients: declined from 160,464 in August 1999 to 141,585 in August 2001, a drop of 18,879 (11.8 percent).
- Recipient FS Children: declined by 28,036 (16.1 percent), from 173,860 in August 1999 to 145,824 in August 2001.

EMERGENCY ASSISTANCE

(Tables 3, 7 and 9, Graphs 3, 7 and 9)

In August 2001 Emergency Assistance (EA) payments were made for 2,347 eligible TANF families and 515 SSI recipients in New Jersey. For TANF families this included payments for:

- Temporary Rental Assistance (TRA) for 245 families
- Motel placements for 396 families and emergency shelter placements for 418 families
- All other TANF-EA for 1,288 families (including back rent, back utilities, security deposits, furnishings, clothing and food allowance, or transitional housing)
- 633 families in Essex County, 244 in Passaic County, 235 in Mercer County, 192 in Monmouth.

In the past two years, the number of EA payments for TANF families increased from 1,995 in August 1999 to 2,347 in August 2001.

- TRA payments were 10.4 % of the total EA Families in August 2001.
- Motel payments were up from two years ago.; 195 to 396.

TANF PARTICIPATION RATES

(Table 8, Graph 8)

The TANF participation rate for August 2001 was 35.10% for the State as a whole. This is a decrease of 3.59 percentage points from July 2001.

Participation rates by county:

- Seven counties had a participation rate greater than 40 percent: Bergen, Hunterdon, Mercer, Monmouth, Morris, Salem, and Somerset.

GENERAL ASSISTANCE

(Table 9, Graph 9)

There were 23,242 GA recipients in June 2001, up from 22,701 in June 2000.

- There were 11,948 Employable GA and 11,294 Unemployable GA recipients in June 2001.

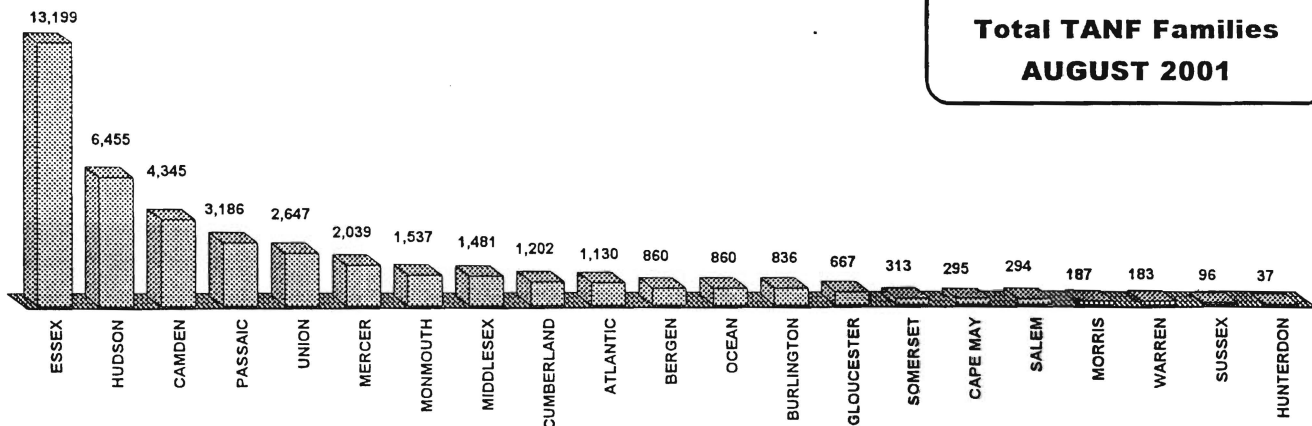
CHILD SUPPORT AND PATERNITY

(Table 10)

For FFY 2001, the total collections of the Child Support and Paternity Program was \$605,243,140, an increase of over 6 percent over the same period for FFY 2000.

Table 1
TANF PROGRAM
NUMBER OF APPLICATIONS AND TERMINATIONS DURING REPORT MONTH, AND NUMBER OF ELIGIBLE FAMILIES RECEIVING TANF AT END OF REPORT MONTH
AUGUST 2001

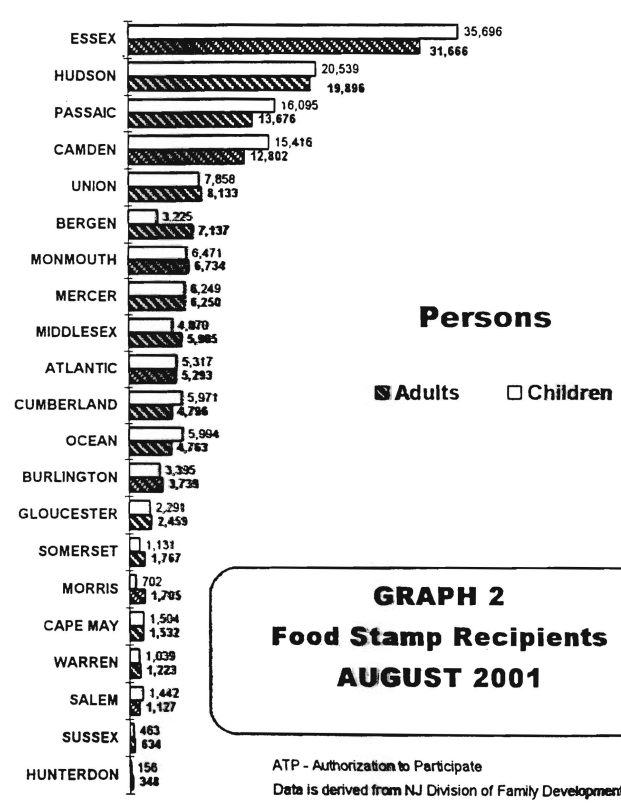
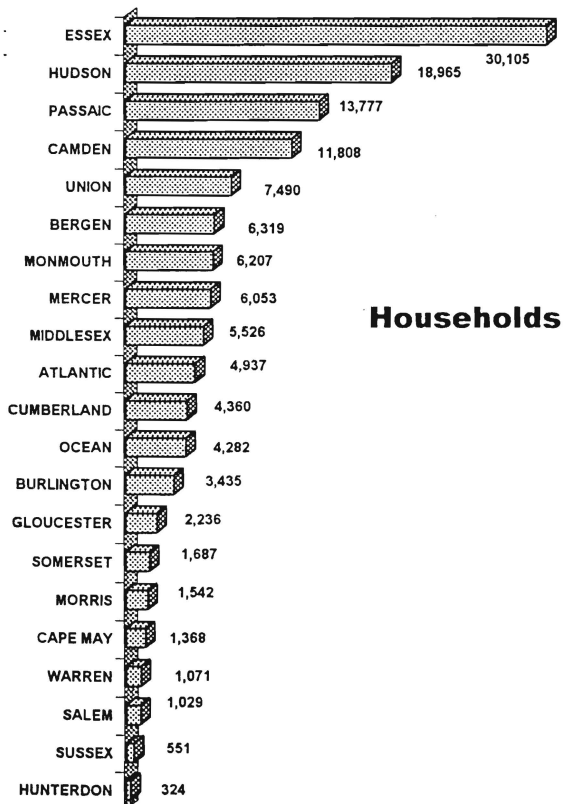
County	Applications Approved	Terminations	Single Head Families	Two Parent Families	Total TANF
ATLANTIC	116	143	1,129	1	1,130
BERGEN	72	90	821	39	860
BURLINGTON	129	122	823	13	836
CAMDEN	481	531	4,211	134	4,345
CAPE MAY	37	66	287	8	295
CUMBERLAND	149	164	1,143	59	1,202
ESSEX	814	1,057	13,119	80	13,199
GLOUCESTER	81	69	655	12	667
HUDSON	369	418	6,350	105	6,455
HUNTERDON	1	3	36	1	37
MERCER	211	150	2,010	29	2,039
MIDDLESEX	173	153	1,442	39	1,481
MONMOUTH	152	153	1,527	10	1,537
MORRIS	19	31	183	4	187
OCEAN	114	94	835	25	860
PASSAIC	258	262	3,098	88	3,186
SALEM	55	70	293	1	294
SOMERSET	43	59	309	4	313
SUSSEX	9	10	95	1	96
UNION	256	192	2,617	30	2,647
WARREN	29	25	171	12	183
NJ TOTAL	3,568	3,862	41,154	695	41,849



Data is derived from NJ Division of Family Development's FAMIS report #FF-012

Table 2 NUMBER OF PARTICIPATING HOUSEHOLDS, PERSONS, ADULTS AND CHILDREN AT THE END OF THE REPORT MONTH
FOOD STAMP PROGRAM AUGUST 2001

County	HOUSEHOLDS			PERSONS				
	TANF	Other low income	TOTAL	TOTAL	TANF	Other low income	Adults	Children
ATLANTIC	794	4,143	4,937	10,610	2,475	8,135	5,293	5,317
BERGEN	618	5,701	6,319	10,362	1,812	8,550	7,137	3,225
BURLINGTON	510	2,925	3,435	7,134	1,624	5,510	3,739	3,395
CAMDEN	3,360	8,448	11,808	28,218	11,316	16,902	12,802	15,416
CAPE MAY	194	1,174	1,368	3,036	621	2,415	1,532	1,504
CUMBERLAND	954	3,406	4,360	10,767	3,140	7,627	4,796	5,971
ESSEX	10,664	19,441	30,105	67,362	34,462	32,900	31,666	35,696
GLOUCESTER	466	1,770	2,236	4,750	1,428	3,322	2,459	2,291
HUDSON	5,311	13,654	18,965	40,435	16,399	24,036	19,896	20,539
HUNTERDON	18	306	324	504	54	450	348	156
MERCER	1,633	4,420	6,053	12,499	5,131	7,368	6,250	6,249
MIDDLESEX	1,134	4,392	5,526	10,775	3,358	7,417	5,905	4,870
MONMOUTH	1,200	5,007	6,207	13,205	3,878	9,327	6,734	6,471
MORRIS	124	1,418	1,542	2,407	348	2,059	1,705	702
OCEAN	572	3,710	4,282	10,757	1,765	8,992	4,763	5,994
PASSAIC	2,603	11,174	13,777	29,771	8,427	21,344	13,676	16,095
SALEM	256	773	1,029	2,569	843	1,726	1,127	1,442
SOMERSET	203	1,484	1,687	2,898	631	2,267	1,767	1,131
SUSSEX	65	486	551	1,097	190	907	634	463
UNION	1,806	5,684	7,490	15,991	5,898	10,093	8,133	7,858
WARREN	150	921	1,071	2,262	460	1,802	1,223	1,039
NJ TOTAL	32,635	100,437	133,072	287,409	104,260	183,149	141,585	145,824



GRAPH 2
Food Stamp Recipients
AUGUST 2001

ATP - Authorization to Participate
 Data is derived from NJ Division of Family Development's
 FAMIS report # FB-160.

Table 3 NUMBER OF ELIGIBLE FAMILIES RECEIVING EMERGENCY ASSISTANCE PAYMENTS
TANF/SSI (UNDUPLICATED CASES)

County	TANF Families Receiving Emergency Assistance					SSI Recipients Receiving EA*
	TOTAL TANF-EA	Temporary Rental Assist.	Motel Housing	Emergency Shelter	Other TANF-EA	
ATLANTIC	79	1	13	13	52	21
BERGEN	104	12	32	21	39	63
BURLINGTON	37	0	1	24	12	9
CAMDEN	147	25	10	24	88	18
CAPE MAY	14	3	9	1	1	10
CUMBERLAND	31	0	1	6	24	9
ESSEX	633	101	34	192	306	48
GLOUCESTER	37	2	6	17	12	12
HUDSON	94	3	19	20	52	12
HUNTERDON	3	0	1	0	2	7
MERCER	235	63	20	0	152	62
MIDDLESEX	149	5	25	16	103	60
MONMOUTH	192	17	130	0	45	17
MORRIS	9	0	1	0	8	4
OCEAN	115	4	51	4	56	46
PASSAIC	244	0	6	24	214	60
SALEM	25	0	10	0	15	5
SOMERSET	51	0	6	23	22	16
SUSSEX	19	1	8	2	8	14
UNION	126	8	12	31	75	16
WARREN	3	0	1	0	2	6
NJ TOTAL	2,347	245	396	418	1,288	515

*SSI-EA now includes pay code 24

GRAPH 3
TANF Families Receiving
Emergency Assistance
AUGUST 2001

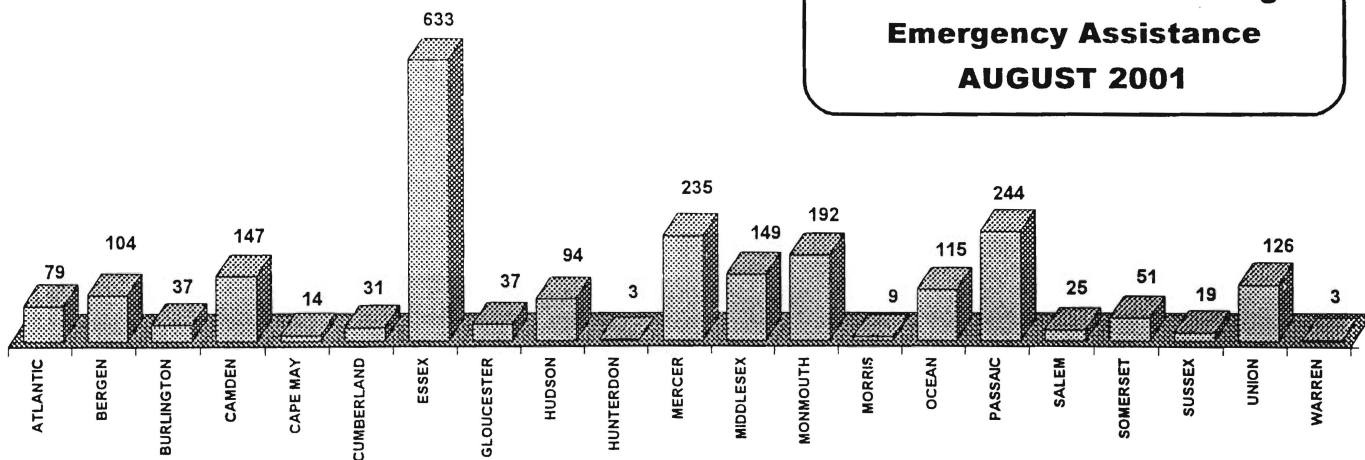


Table 4

WORK FIRST NEW JERSEY STATISTICAL SUMMARY

WFNJ

AUGUST 2001

COUNTY	CASES REQUIRED TO PARTICIPATE	EMPLOYMENT DIRECTED ACTIVITIES			EMPLOYED OPEN (TANF RECIPIENT)	SUPPORT SERVICES ON ACTIVE CASE		EMPLOYED CLOSED	POST TANF CHILD CARE
		CWEP	ALL OTHER TRAINING	JOB SEARCH		CHILD CARE	TRAINING REL. EXPENSES		
ATLANTIC	499	1	182	127	73	73	114	57	266
BERGEN	463	41	179	223	96	123	119	18	159
BURLINGTON	384	46	39	131	133	64	79	28	208
CAMDEN	2,475	654	379	344	537	433	557	115	898
CAPE MAY	124	6	11	34	57	13	12	23	78
CUMBERLAND	662	8	257	175	126	87	116	39	270
ESSEX	8,614	373	3,140	949	1,904	1,685	1,687	118	855
GLOUCESTER	323	0	27	6	64	42	5	11	127
HUDSON	3,976	39	1,811	535	1,003	828	445	118	699
HUNTERDON	14	0	0	9	4	1	1	1	13
MERCER	1,236	54	566	248	229	197	115	41	356
MIDDLESEX	729	0	79	74	243	95	106	35	278
MONMOUTH	887	2	437	97	252	252	326	32	362
MORRIS	90	21	11	20	17	17	17	8	58
OCEAN	351	15	111	112	85	72	61	25	217
PASSAIC	1,886	35	1,385	126	313	286	457	40	319
SALEM	171	32	8	25	36	39	40	14	72
SOMERSET	167	11	36	25	46	32	22	18	78
SUSSEX	49	13	0	9	16	8	2	1	42
UNION	1,388	21	453	129	252	247	320	40	352
WARREN	118	2	89	6	19	11	3	10	40
STATE	24,606	1,374	9,200	3,404	5,505	4,605	4,604	792	5,747

Data is derived from NJ Division of Family Development's FAMIS reports

Table 5 NUMBER OF APPLICATIONS AND TERMINATIONS DURING REPORT MONTH, AND TANF PROGRAM NUMBER OF ELIGIBLE FAMILIES RECEIVING TANF AT END OF REPORT MONTH
AUGUST 1999 THROUGH AUGUST 2001

	Applications Approved	Terminations	Single Head Families	Two Parent Families	Total TANF
1999					
AUG	4,835	5,064	55,273	1,320	56,593
SEP	4,143	4,866	54,563	1,303	55,866
OCT	4,380	5,425	53,578	1,280	54,858
NOV	4,222	5,369	52,173	1,216	53,389
DEC	3,815	4,857	51,283	1,162	52,445
1999 AVERAGE	4,279	5,116	53,374	1,256	54,630
2000					
JAN	3,847	4,543	50,810	1,121	51,931
FEB	4,023	4,478	50,351	1,127	51,478
MAR	3,485	4,106	49,809	1,159	50,968
APR	4,523	4,781	49,695	1,110	50,805
MAY	3,366	4,363	48,650	1,039	49,689
JUN	3,444	4,352	47,769	977	48,746
JUL	4,150	5,546	46,094	930	47,024
AUG	3,675	4,434	45,342	908	46,250
SEP	4,848	5,247	45,219	896	46,115
OCT	3,755	4,246	44,776	875	45,651
NOV	4,126	4,722	44,215	828	45,043
DEC	3,605	3,784	44,260	829	45,089
2000 AVERAGE	3,904	4,550	47,249	983	48,232
2001					
JAN	3,505	3,554	43,959	809	44,768
FEB	3,767	4,135	43,718	826	44,544
MAR	3,581	3,597	43,517	836	44,353
APR	3,961	4,422	43,202	813	44,015
MAY	3,545	4,099	42,782	789	43,571
JUN	3,588	4,017	42,116	760	42,876
JUL	4,239	4,887	41,318	737	42,055
AUG	3,568	3,862	41,154	695	41,849
2001 AVERAGE	3,719	4,072	42,721	783	43,504

* During March FAMIS mass change approximately 6,600 cases previously identified as Medicaid only are now shown as terminated due to delinking of Medicaid and TANF.

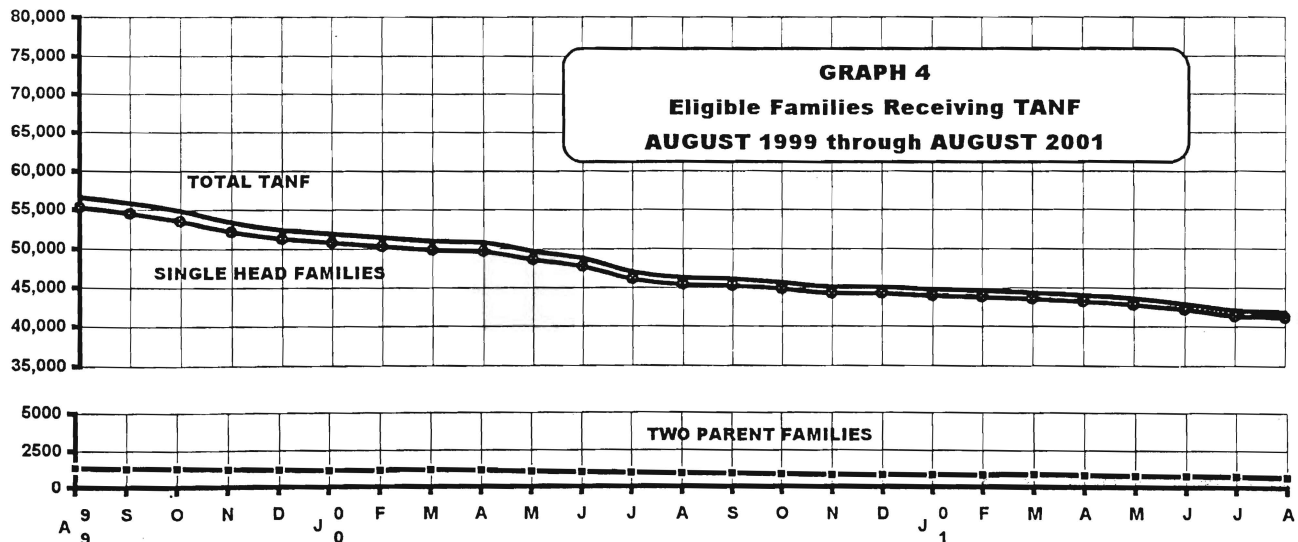
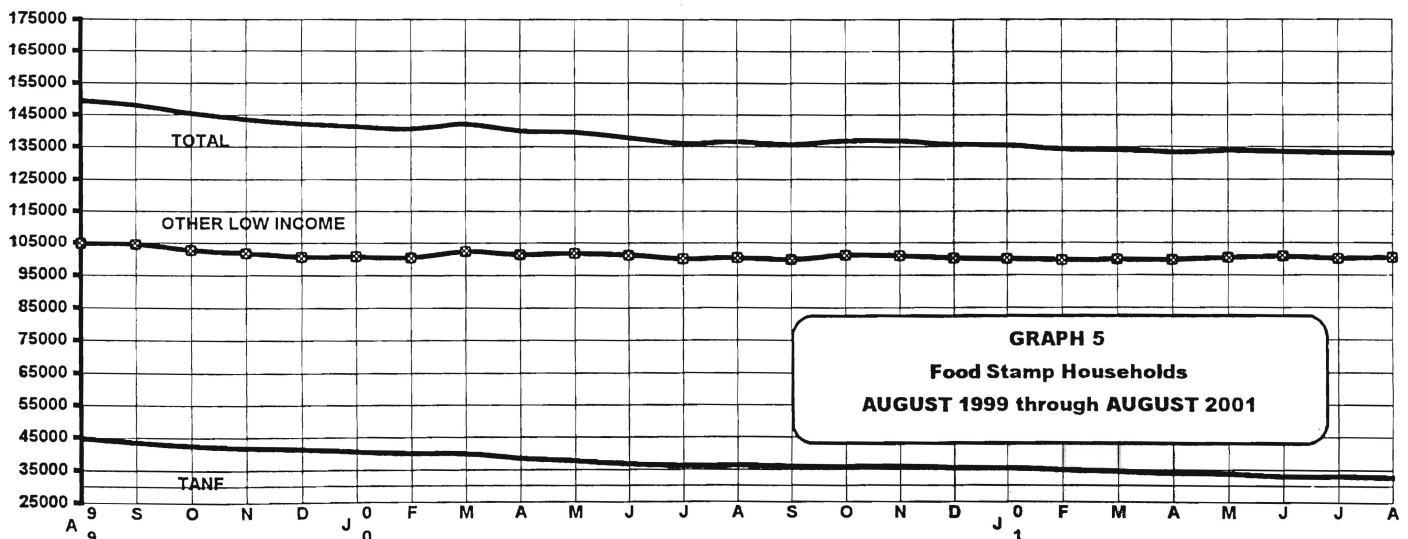


Table 6
FOOD STAMP
PROGRAM

NUMBER OF PARTICIPATING HOUSEHOLDS, PERSONS, ADULTS
AND CHILDREN AT THE END OF THE REPORT MONTH

AUGUST 1999 THROUGH AUGUST 2001

		HOUSEHOLDS			PERSONS				
		TANF	Other low income	TOTAL	TOTAL	TANF	Other low income	Adults	Children
1999	AUG	44,697	104,597	149,294	334,324	144,418	189,906	160,464	173,860
	SEP	43,448	104,543	147,991	330,897	140,290	190,607	158,996	171,901
	OCT	42,582	102,757	145,339	326,063	137,669	188,394	156,214	169,849
	NOV	41,677	101,728	143,405	322,601	135,098	187,503	154,392	168,209
	DEC	41,444	100,609	142,053	320,341	134,288	186,053	152,961	167,380
1999 AVERAGE		42,770	102,847	145,616	326,845	138,353	188,493	156,605	170,240
2000	JAN	40,648	100,705	141,353	317,214	131,804	185,410	152,219	164,995
	FEB	40,071	100,435	140,506	314,200	129,699	184,501	151,301	162,899
	MAR	39,771	102,365	142,136	317,053	128,571	188,482	153,071	163,982
	APR	38,494	101,394	139,888	311,045	124,332	186,713	150,572	160,473
	MAY	37,738	101,747	139,485	309,401	122,022	187,379	149,926	159,475
	JUN	36,645	101,151	137,796	305,706	118,628	187,078	148,071	157,635
	JUL	36,065	99,962	136,027	301,537	116,745	184,792	146,058	155,479
	AUG	36,216	100,401	136,617	302,235	117,167	185,068	146,578	155,657
	SEP	35,831	99,745	135,576	299,145	115,846	183,299	145,239	153,906
	OCT	35,655	101,172	136,827	301,067	114,971	186,096	146,531	154,536
	NOV	35,831	100,953	136,784	299,959	115,179	184,780	146,432	153,527
	DEC	35,365	100,218	135,583	296,742	113,712	183,030	145,037	151,705
2000 AVERAGE		37,361	100,854	138,215	306,275	120,723	185,552	148,420	157,856
2001	JAN	35,356	100,076	135,432	295,371	113,478	181,893	144,826	150,545
	FEB	34,645	99,641	134,286	291,739	110,908	180,831	143,600	148,139
	MAR	34,300	99,817	134,117	290,519	109,606	180,913	143,294	147,225
	APR	33,764	99,643	133,407	288,516	107,963	180,553	142,389	146,127
	MAY	33,526	100,398	133,924	289,820	107,006	182,814	142,858	146,962
	JUN	32,870	100,720	133,590	288,667	104,982	183,685	142,368	146,299
	JUL	33,035	100,080	133,115	288,205	105,542	182,663	141,811	146,394
	AUG	32,635	100,437	133,072	287,409	104,260	183,149	141,585	145,824
2001 AVERAGE		33,766	100,102	133,868	290,031	107,968	182,063	142,841	147,189



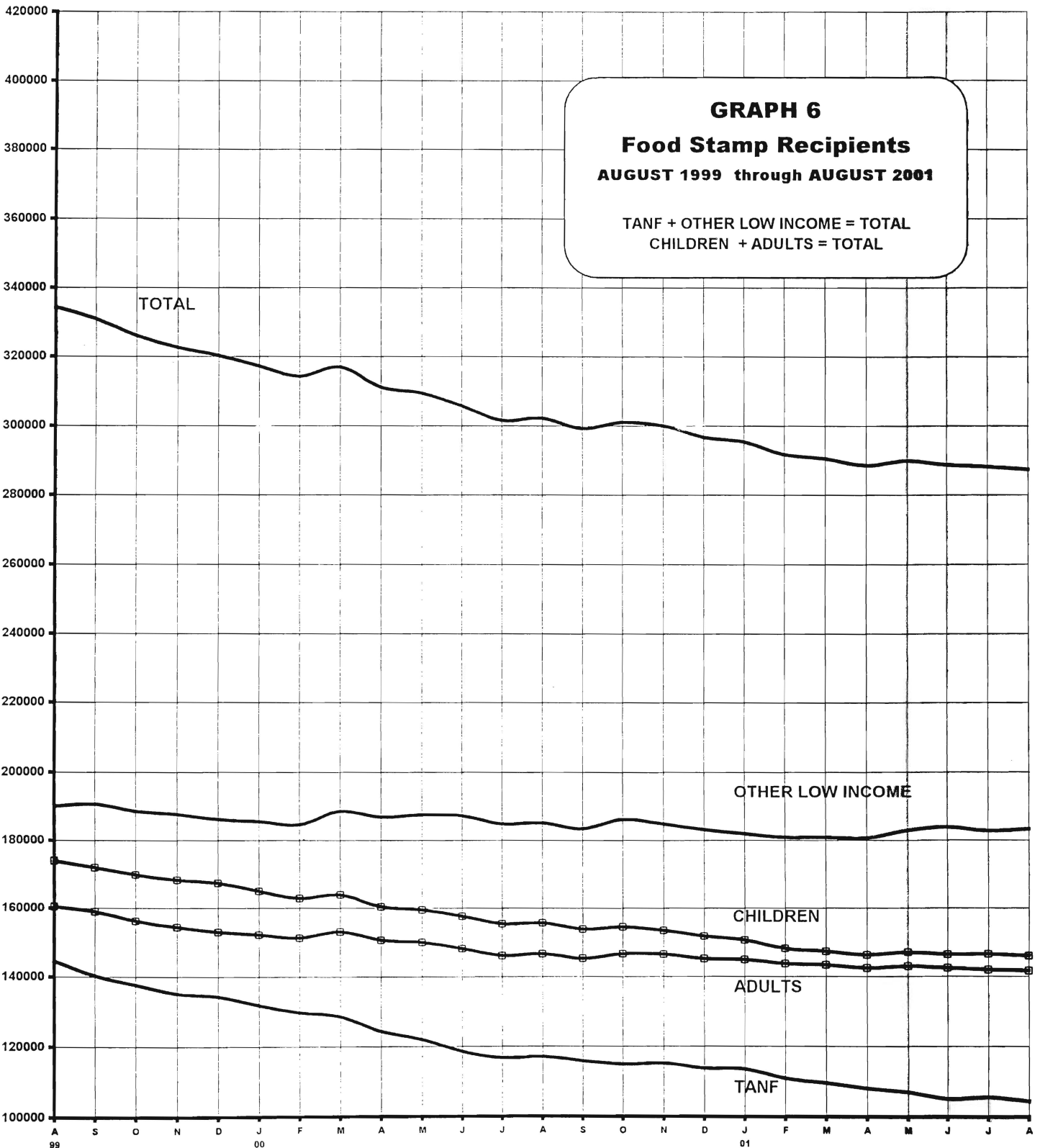


Table 7

NUMBER OF ELIGIBLE FAMILIES RECEIVING EMERGENCY ASSISTANCE PAYMENTS

(UNDUPLICATED CASES)

TANF

EMERGENCY ASSISTANCE

AUGUST 1999 THROUGH AUGUST 2001

	Total Families Receiving EA	Temporary Rental Assistance	Motel Housing	Emergency Shelter	Other TANF-EA
1999					
AUG	1,995	294	195	239	1,267
SEP	1,765	267	210	252	1,036
OCT	1,876	263	207	315	1,091
NOV	1,702	251	180	226	1,045
DEC	1,888	245	230	314	1,099
1999 AVERAGE	1,845	264	204	269	1,108
2000					
JAN	1,739	247	175	306	1,011
FEB	1,753	261	185	370	937
MAR	2,015	248	197	406	1,164
APR	1,636	255	181	304	896
MAY	1,853	237	173	343	1,100
JUN	1,781	241	199	305	1,036
JUL	1,626	208	211	310	897
AUG	1,957	225	213	332	1,187
SEP	1,867	220	223	324	1,100
OCT	2,019	205	280	395	1,139
NOV	1,779	204	249	383	943
DEC	1,841	216	272	349	1,004
2000 AVERAGE	1,822	231	213	344	1,035
2001					
JAN	1,954	229	314	387	1,024
FEB	1,804	226	289	354	935
MAR	2,052	241	337	356	1,118
APR	1,843	228	325	270	1,020
MAY	2,133	236	328	412	1,157
JUN	2,102	232	368	371	1,131
JUL	2,188	269	305	394	1,220
AUG	2,347	245	396	418	1,288
2001 AVERAGE	2,053	238	333	370	1,112

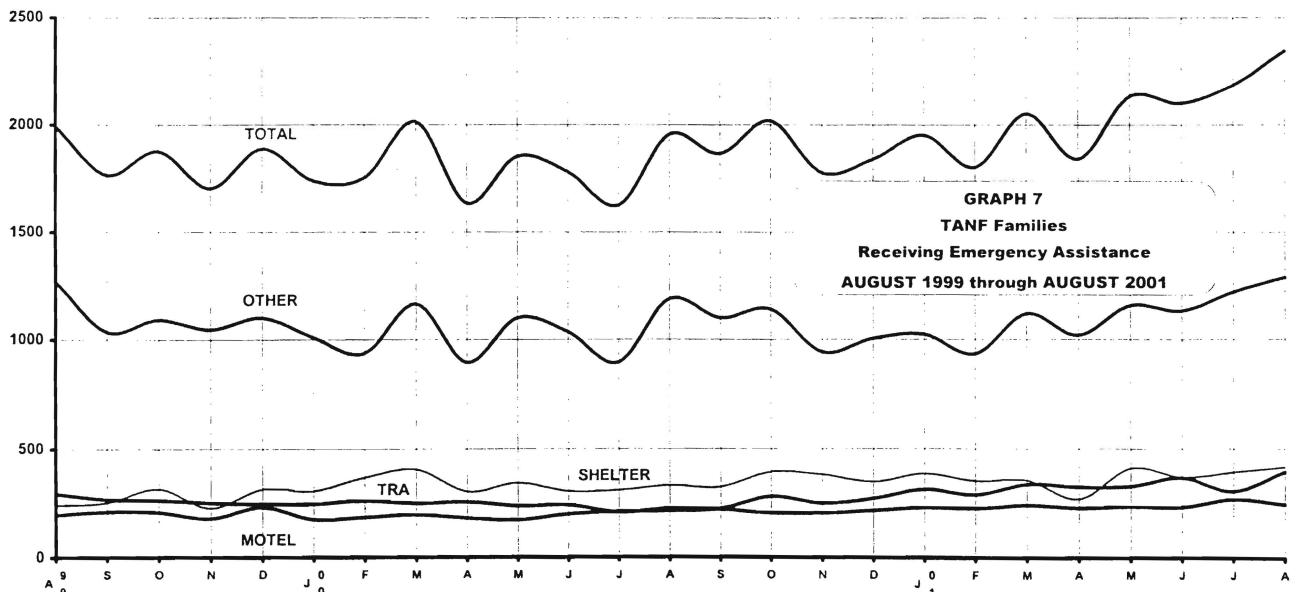


Table 8

TANF PARTICIPATION RATES

JUNE - AUGUST 2001

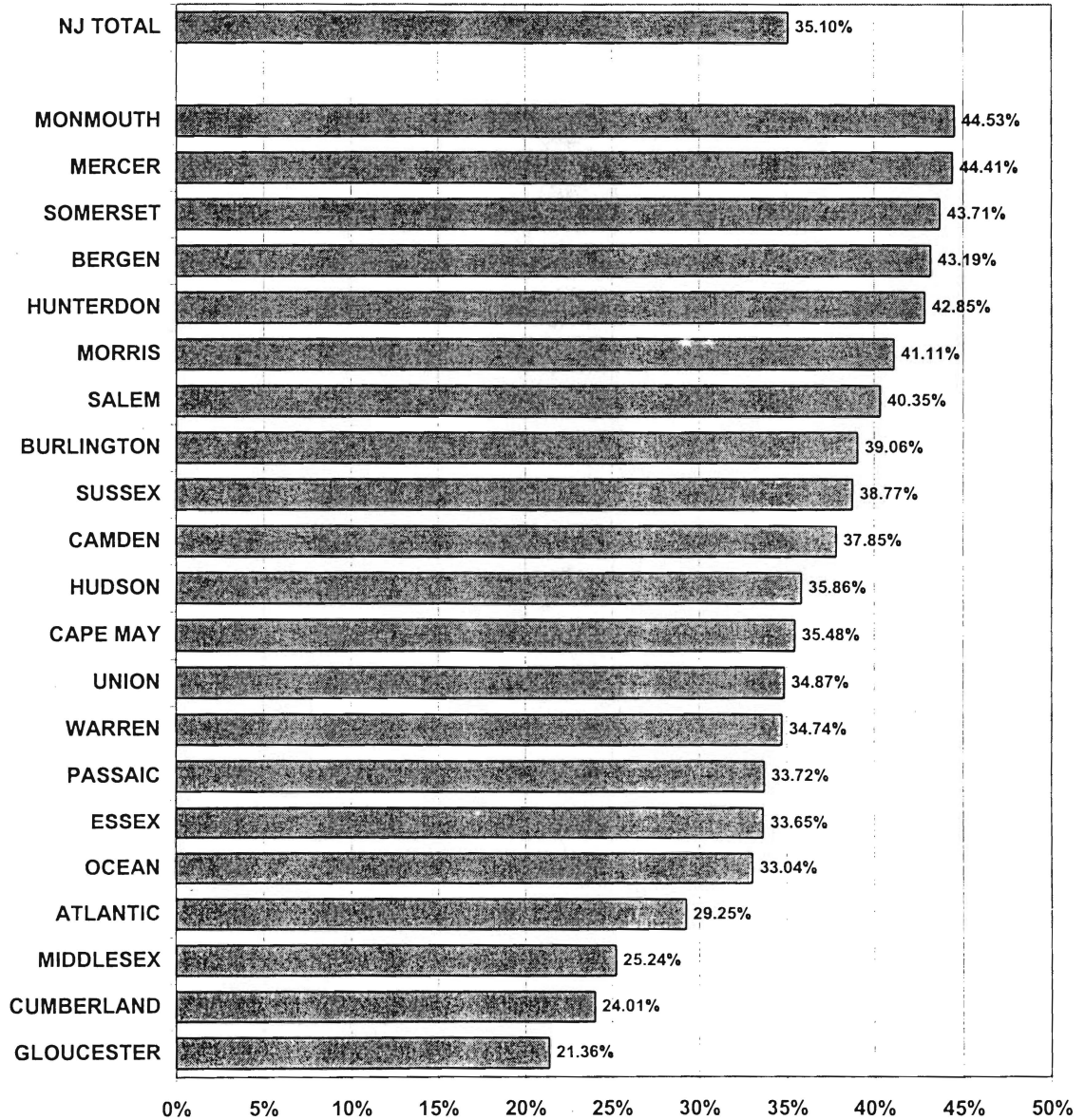
County	June	July	AUGUST
ATLANTIC	36.47%	33.26%	29.25%
BERGEN	39.65%	46.20%	43.19%
BURLINGTON	42.03%	33.42%	39.06%
CAMDEN	36.66%	38.17%	37.85%
CAPE MAY	52.20%	34.92%	35.48%
CUMBERLAND	25.76%	25.07%	24.01%
ESSEX	40.13%	39.72%	33.65%
GLOUCESTER	22.80%	22.08%	21.36%
HUDSON	39.57%	38.24%	35.86%
HUNTERDON	41.66%	20.00%	42.85%
MERCER	41.66%	44.19%	44.41%
MIDDLESEX	28.48%	29.11%	25.24%
MONMOUTH	47.56%	48.08%	44.53%
MORRIS	49.45%	45.23%	41.11%
OCEAN	38.20%	32.29%	33.04%
PASSAIC	34.45%	39.04%	33.72%
SALEM	46.11%	47.45%	40.35%
SOMERSET	53.33%	57.57%	43.71%
SUSSEX	38.23%	39.47%	38.77%
UNION	40.01%	37.60%	34.87%
WARREN	40.74%	40.70%	34.74%
NJ TOTAL	38.83%	38.69%	35.10%

The Work First New Jersey participation rate
(mandated by PRWORA, 1996 federal welfare reform legislation establishing TANF)
has been revised based on new Federal clarification of the formula

Graph 8

TANF PARTICIPATION RATES

AUGUST 2001



The Work First New Jersey participation rate (mandated by PRWORA, 1996 federal welfare reform legislation establishing TANF) has been revised based on new Federal clarification of the formula

TABLE 9 **NUMBER OF EMPLOYABLE AND UNEMPLOYABLE RECIPIENTS**
GENERAL **AND EMERGENCY ASSISTANCE PAYMENTS DURING REPORT MONTH**
ASSISTANCE **JUNE 1999 THROUGH JUNE 2001**

PROGRAM	All Persons Aided			Emergency Assistance Payments		
	Employable	Unemployable	Total	Temporary Rental Assistance	Other GA-EA	Total
1999 JUN	15,419	9,757	25,176	1,723	1,591	3,314
JUL	15,451	9,972	25,423	1,814	1,665	3,479
AUG	15,317	9,992	25,309	1,648	1,629	3,277
SEP	14,912	9,966	24,878	1,668	1,579	3,247
OCT	14,361	9,650	24,011	1,676	1,612	3,288
NOV	13,566	9,708	23,274	1,543	1,227	2,770
DEC	14,165	9,730	23,895	1,607	1,307	2,914
1999 AVERAGE	14,742	9,825	24,567	1,668	1,516	3,184
2000 JAN	13,502	10,084	23,586	1,603	1,334	2,937
FEB	13,258	10,695	23,953	1,720	1,785	3,505
MAR	12,737	10,170	22,907	1,635	1,784	3,419
APR	13,074	10,824	23,898	1,553	2,005	3,558
MAY	12,807	10,897	23,704	1,526	1,883	3,409
JUN	12,356	10,345	22,701	1,558	1,987	3,545
JUL	11,530	10,252	21,782	1,506	1,765	3,271
AUG	12,218	11,041	23,259	1,501	1,995	3,496
SEP	11,170	10,366	21,536	1,404	1,617	3,021
OCT	11,383	11,687	23,070	1,509	1,425	2,934
NOV	11,219	10,618	21,837	1,414	1,589	3,003
DEC	11,284	10,568	21,852	1,515	1,701	3,216
2000 AVERAGE	12,212	10,629	22,840	1,537	1,739	3,276
2001 JAN	11,572	10,851	22,423	1,426	1,881	3,307
FEB	11,664	10,573	22,237	1,472	1,688	3,160
MAR	12,395	10,891	23,286	1,589	2,076	3,665
APR	12,216	11,107	23,323	1,506	2,098	3,604
MAY	12,404	11,165	23,569	1,472	1,996	3,468
JUN	11,948	11,294	23,242	1,535	2,027	3,562
2001 AVERAGE	12,033	10,980	23,013	1,500	1,961	3,461

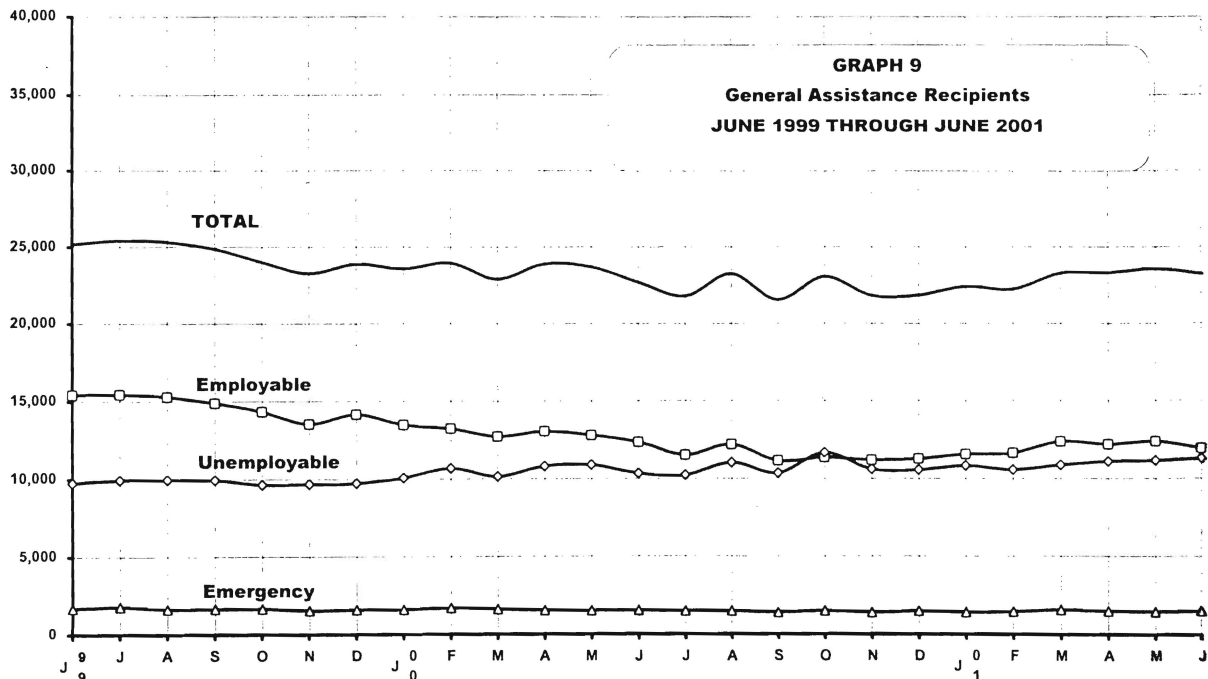


TABLE 10

CHILD SUPPORT
AND PATERNITYCHILD SUPPORT AND PATERNITY COLLECTIONS
State Summary

COLLECTION SOURCE	Comparison of FFY 2000 and FFY 2001		
	10/99-6/00	10/00-6/01	% change
Federal Tax	\$28,882,624	\$30,187,523	4.52%
State Tax	2,462,892	2,328,329	-5.46%
Unempl. Ins. Ben.	15,911,501	17,812,252	11.95%
Income Withholding	365,059,965	390,863,579	7.07%
From Other States	29,383,192	30,595,758	4.13%
Other/Own Behalf	126,793,475	133,455,699	5.25%
Admin Enforce			
TOTAL COLLECTION	\$568,493,649	\$605,243,140	6.46%
TOTAL DISTRIBUTION*	\$540,434,045	\$573,780,479	6.17%

* Includes money sent to other states

Distributed amount represents collections reported and recognized by the Federal Office of
Child Support Enforcement for calculating incentives and annual report to Congress
Source: DFD Office of Child Support and Paternity Programs

Explanatory Notes

The Department of Human Services Division of Family Development provides basic income and an opportunity to achieve self-sufficiency for individuals and families served by the Division's programs. The Division provides leadership, direction and supervision to those public agencies responsible for administering those programs and plans for and develops policies to promote self-sufficiency.

WORK FIRST NEW JERSEY (WFNJ) - Fully implemented July 1, 1997, this is New Jersey's welfare reform program which responds to the requirements of the Federal Personal Responsibility and Work Opportunity Reconciliation Act (PRWORA) of 1996. PRWORA establishes Temporary Assistance to Needy Families (TANF) as the replacement for AFDC cash assistance. WFNJ includes two segments, WFNJ/TANF for families with children, and WFNJ/GA (General Assistance) for single adults and couples without dependent children. The emphasis is on achieving self-sufficiency and limits lifetime receipt of financial assistance to a total of five years.

WFNJ Statistical Summary (Table 4)

Recipients Required to Participate - Calculation of the number of mandatory individuals

Employment Directed Activities (EDA) - From Activities Summary Report (OMEGA report # RM064). Unduplicated count of persons participating in Community Work Experience Program (CWEP), All Other Training, or Job Search.

Number of Persons Employed This Month, Still Receiving TANF – Individuals with open “empl” activity on OMEGA. Ad hoc report.

Participants Receiving Child Care Services - From Issuance Disbursement Summary (OMEGA report # RM703). Total number of active participants who show receipt of Child Care.

Number of Persons Closed on FAMIS Due to Employment- From FAMIS report # FM463.

Post TANF and Receiving Child Care - Persons no longer in receipt of TANF but still receiving child care. From Issuance Disbursement Summary (OMEGA report # RM703).

TABLE 11

GENERAL ASSISTANCE PROGRAM **EMPLOYABLE AND UNEMPLOYABLE RECIPIENTS AND EMERGENCY ASSISTANCE RECIPIENTS**

JUNE 2001

County	Employable	Total Persons Aided		Emergency Assistance Payments		
		Unemployable	Total	Temporary Rental Assist.	Other GA-EA	Total
ATLANTIC	733	619	1,352	82	66	148
BERGEN	211	416	627	83	30	113
BURLINGTON	255	324	579	13	41	54
CAMDEN	1,051	1,248	2,299	134	148	282
CAPE MAY	104	131	235	41	19	60
CUMBERLAND	578	403	981	37	0	37
ESSEX	3,340	1,811	5,151	298	882	1,180
GLOUCESTER	195	227	422	3	42	45
HUDSON	1,098	1,261	2,359	82	56	138
HUNTERDON	56	42	98	10	25	35
MERCER	1,197	969	2,166	77	146	223
MIDDLESEX	324	445	769	55	103	158
MONMOUTH	344	578	922	130	139	269
MORRIS	88	155	243	16	8	24
OCEAN	253	383	636	24	94	118
PASSAIC	1,126	1,209	2,335	247	84	331
SALEM	73	131	204	0	31	31
SOMERSET	38	56	94	23	33	56
SUSSEX	43	66	109	11	18	29
UNION	778	746	1,524	140	52	192
WARREN	63	74	137	29	10	39
TOTAL NJ	11,948	11,294	23,242	1,535	2,027	3,562

Source: NJ Division of Family Development, GA Fiscal Unit

TABLE 12

**CHILD SUPPORT
AND PATERNITY**

NUMBER OF CASES REMAINING OPEN

QUARTER ENDING JUNE 2001

	CASES WITH ORDERS			OTHER CASES (1)		TOTAL TANF AND FOSTER CARE	TOTAL NON- TANF	TOTAL ALL CASES
	TANF AND FOSTER CARE	TANF AND FOSTER CARE ARREARS (2)	NON- TANF	TANF AND FOSTER CARE	NON- TANF			
Atlantic	921	3,741	8,335	1,344	1,686	6,006	10,021	16,027
Bergen	589	1,794	9,328	709	1,145	3,092	10,473	13,565
Burlington	887	3,496	10,587	847	1,573	5,230	12,160	17,390
Camden	4,322	13,102	19,621	3,871	4,263	21,305	23,884	45,189
Cape May	275	1,098	3,025	199	243	1,572	3,268	4,840
Cumberland	1,569	5,709	8,670	338	465	7,616	9,135	16,751
Essex	7,862	16,430	30,016	13,702	7,580	37,994	37,596	75,590
Gloucester	669	2,636	6,864	401	987	3,706	7,851	11,557
Hudson	3,702	8,471	19,186	4,434	4,293	16,607	23,479	40,086
Hunterdon	64	229	1,430	43	64	336	1,494	1,830
Mercer	2,286	6,160	10,968	1,789	1,908	10,235	12,876	23,111
Middlesex	1,186	5,118	14,107	1,531	2,025	7,835	16,132	23,967
Monmouth	1,794	5,047	10,962	1,445	1,885	8,286	12,847	21,133
Morris	220	642	3,998	240	389	1,102	4,387	5,489
Ocean	995	3,650	10,193	809	1,144	5,454	11,337	16,791
Passaic	2,863	6,169	14,733	3,165	3,456	12,197	18,189	30,386
Salem	524	1,759	3,127	171	191	2,454	3,318	5,772
Somerset	274	803	3,683	280	359	1,357	4,042	5,399
Sussex	163	407	1,797	66	117	636	1,914	2,550
Union	1,608	6,420	14,947	2,778	4,928	10,806	19,875	30,681
Warren	270	964	2,229	102	98	1,336	2,327	3,663
NJ TOTAL	33,053	93,845	207,806	38,264	38,799	165,162	246,605	411,767

Data Sources: Automated Child Support Enforcement System #CS199-3

(1) - Needing location, paternity, or other services to establish an obligation

(2) - Cases with arrears *only*