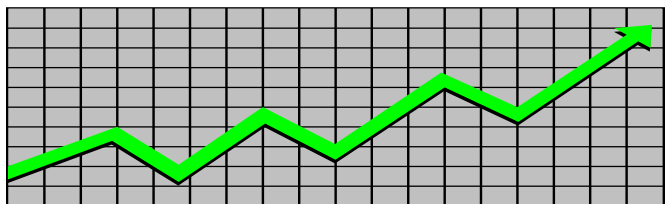


State of New Jersey
Department of Human Services
Division of Family Development

CURRENT PROGRAM STATISTICS



April 2022

Natasha Johnson, Assistant Commissioner

TABLE OF CONTENTS

HIGHLIGHTS:

WFNJ/TANF	ii
NJ SNAP	ii
EMERGENCY ASSISTANCE	ii
GENERAL ASSISTANCE	iii
GA Emergency Assistance.....	iii
GA Program.....	iii
CHILD SUPPORT SERVICES	iii
WORK FIRST NEW JERSEY (WFNJ)	iii
STATISTICS- BY STATE & COUNTY	1
Table 1: WFNJ/TANF Families & Persons (NJ Statewide) April 2020 to 2022.....	1
Table 2: WFNJ/TANF Families (by County)- April 2022.....	2
Table 2B: WFNJ/TANF Persons, Adults, & Children (by County)- April 2022.....	3
Table 3: TANF Work Participation Rates Over 12 Month Period (by County)- April 2022.....	4
Table 4: TANF Work Participation Rates Over 12 Month Period (NJ Statewide)- April 2022.....	5
Table 5: NJ SNAP Households/Persons (NJ Statewide) April 2020 to 2022.....	6
Table 6: NJ SNAP Recipient Trends (NJ Statewide) April 2020 to 2022.....	7
Table 7: NJ SNAP Households/Persons (by County)- April 2022.....	8
Table 8: Emergency Assistance Program (NJ Statewide) April 2020 to 2022.....	9
Table 9: Emergency Assistance Program (by County)- April 2022.....	10
Table 10: General Assistance Program (NJ Statewide) April 2020 to 2022.....	11
Table 11: General Assistance Program (by County)- April 2022.....	12
Table 12: Child Support Services Distributions (NJ Statewide) FFY 2022.....	13
Table 13: Child Support Services Paternities Established- April 2022.....	14
Table 14: Child Support Services Cases With Orders- April 2022.....	15
Table 15: Child Support Services Collections On Current Support- April 2022.....	16
Table 16: Child Support Services Cases With Payments On Arrears- April 2022.....	17
Table 17: WFNJ Statistical Summary- April 2022.....	18
ACRONYMS	19
EXPLANATORY NOTES	20
WFNJ Statistical Summary (Table 17).....	20

DIVISION OF FAMILY DEVELOPMENT CURRENT PROGRAM STATISTICS

APRIL 2022

Each month the Division of Family Development publishes its program statistics for: WFNJ/TANF, NJ SNAP, Emergency Assistance, General Assistance, and Child Support Services. When possible, information is provided separately for children and adults. Many tables also provide trend data with information broken down by county for readers to consider. This report is compiled and prepared by The Bureau of Research & Reporting.

WFNJ/TANF

- As of the end of April, the TANF caseload had increased by 545 cases, from 9,913 in April 2021 to 10,458 in April 2022; an increase of 5.5%.
- The counties with caseloads that increased the most since April 2021 were Hunterdon (35.6%), Salem (24.6%), and Union (21.6%).
- The counties with caseloads that decreased the most since April 2021 were Essex (-25.8%) and Warren (-24.8%).
- Of the WFNJ/TANF cases, 2,743 or 26.2% were child-only in April 2022.
- The counties with the most child-only cases were Camden (486), Hudson (306), and Passaic (294).
- Hudson (4,360), Camden (3,918), and Essex (3,283) counties had the greatest number of persons receiving TANF in April 2022.

NJ SNAP (Formerly FOOD STAMPS)

- In April 2022, there were 450,365 households receiving NJ SNAP benefits. The number of NJ SNAP households increased by 17,705 or 4.1%, since April 2021.
- There were 866,381 persons receiving NJ SNAP benefits as of April 2022; an increase of 26,344 or 3.1% since April 2021.
- The counties having the highest SNAP caseload increase since April 2021 were Essex (14.5%), Camden (7.7%), and Atlantic (6.9%).
- The counties having the highest SNAP caseload decrease since April 2021 were Warren (-11.5%), Sussex (-7.9%), and Monmouth (-5.6%).

EMERGENCY ASSISTANCE

- There were 1,282 TANF families receiving Emergency Assistance (EA) in April 2022; a decrease of 133 or -9.4% since April 2021.
- In April 2022, EA payments were made for 622 SSI recipients.

DIVISION OF FAMILY DEVELOPMENT CURRENT PROGRAM STATISTICS

APRIL 2022

- There were 1,938 GA cases with Emergency Assistance payments in April 2022; a decrease of 98 or -4.8% since April 2021.
- The counties that showed the highest percent increase in Emergency Assistance payments were Mercer (36.7%), Monmouth (31%), and Hunterdon (18.5%).
- The counties that showed the highest percent decrease in Emergency Assistance payments were Cumberland (-100%), Salem (-66.7%), and Gloucester (-65.5%).

GENERAL ASSISTANCE

- The total numbers of cases receiving GA has increased from 13,787 to 15,633 since April 2021; an increase of 13.4%.
- There were 11,810 Employable GA and 3,823 Unemployable GA cases in April 2022.
- The counties that showed a percent increase for GA cases were Hunterdon (71.4%), Atlantic (44.1%), and Camden (42.7%) since April 2021.
- The counties that showed the highest percent decrease for GA cases since April 2021 were Warren (-18.5%), Sussex (-17.5%), and Hudson (-12.6%).
- In April 2022, GA cases showed a 1.96% increase since March 2022.

CHILD SUPPORT SERVICES (QUARTERLY REPORT)

- The total collection for the Child Support Services Program was about \$280 million from January 2022 to March 2022; a decrease of -4.72% over the same period from FFY 2021.
- Total distributions decreased -7.4% from March 2021.

WORK FIRST NEW JERSEY (WFNJ)

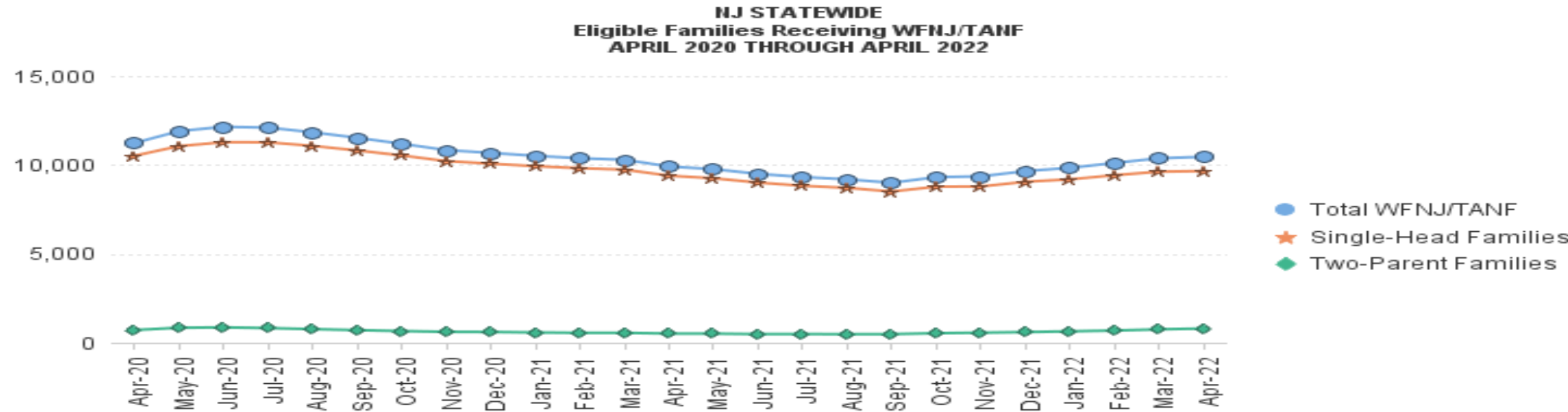
- During the report month of April 2022, there were 402 families in which at least one member was employed and an additional 96 families whose WFNJ assistance cases were closed due to employment - related earnings.
- The three counties with the greatest number of employed active WFNJ recipients were: Hudson (74), Essex (51), and Mercer (42).
- There were 212 former TANF cases receiving post-TANF support in the form of child care assistance.

TABLE 1:
WFNJ/TANF
PROGRAM

STATEWIDE NUMBER OF APPLICATIONS AND TERMINATIONS DURING APRIL 2022

NUMBER OF ELIGIBLE FAMILIES & PERSONS RECEIVING WFNJ/TANF FOR APRIL 2022

APRIL 2020 THROUGH APRIL 2022												
		Cases Added	Cases Closed	Child-Only Cases ‡	Total Single-Head Families	2-Parent Families	Total WFNJ/TANF Families	%CHNG (1 Yr.)	Total Persons	%CHNG (1 Yr.)	Adults	Children
2020	APR	1,179	712	3,621	10,519	716	11,235	3.7%	28,765	6.7%	8,330	20,435
	MAY	832	232	3,696	11,057	845	11,902	10.2%	30,734	14.4%	9,051	21,683
	JUN	539	278	3,722	11,281	866	12,147	12.9%	31,370	17.6%	9,291	22,079
	JUL	458	526	3,686	11,274	826	12,100	14.2%	31,216	18.6%	9,240	21,976
	AUG	410	660	3,665	11,070	768	11,838	10.2%	30,454	13.9%	8,941	21,513
	SEP	475	796	3,603	10,817	711	11,528	7.3%	29,531	10.2%	8,636	20,895
	OCT	534	904	3,564	10,532	659	11,191	7.6%	28,657	9.6%	8,286	20,371
	NOV	419	767	3,470	10,218	617	10,835	-1.1%	27,738	0.3%	7,982	19,756
2020	DEC	434	595	3,410	10,071	607	10,678	-2.5%	27,371	-1.4%	7,875	19,496
	Average	682	724	3,614	10,607	698	11,306		28,973		8,390	20,583
2021	JAN	400	585	3,379	9,932	580	10,512	-1.7%	26,960	-0.6%	7,713	19,247
	FEB	378	504	3,347	9,818	559	10,377	-4.1%	26,520	-3.6%	7,589	18,931
	MAR	397	481	3,311	9,735	557	10,292	-3.9%	26,335	-3.2%	7,538	18,797
	APR	298	704	3,224	9,395	518	9,913	-11.8%	25,276	-12.1%	7,207	18,069
	MAY	264	510	3,209	9,250	513	9,763	-18.0%	24,858	-19.1%	7,067	17,791
	JUN	373	636	3,141	9,008	489	9,497	-21.8%	24,146	-23.0%	6,845	17,301
	JUL	391	590	3,068	8,829	493	9,322	-23.0%	23,785	-23.8%	6,747	17,038
	AUG	415	544	3,029	8,709	482	9,191	-22.4%	23,445	-23.0%	6,644	16,801
	SEP	388	588	2,945	8,507	489	8,996	-22.0%	23,009	-22.1%	6,540	16,469
	OCT	833	564	2,921	8,779	538	9,317	-16.7%	23,888	-16.6%	6,934	16,954
	NOV	656	614	2,816	8,791	568	9,359	-13.6%	24,282	-12.5%	7,111	17,171
	DEC	702	432	2,824	9,054	601	9,655	-9.6%	25,177	-8.0%	7,432	17,745
2021	Average	458	563	3,101	9,151	532	9,683		24,807		7,114	17,693
2022	JAN	667	484	2,796	9,193	645	9,838	-6.4%	25,789	-4.3%	7,687	18,102
	FEB	655	414	2,794	9,424	689	10,113	-2.5%	26,638	0.4%	8,008	18,630
	MAR	715	512	2,804	9,623	756	10,379	0.8%	27,433	4.2%	8,331	19,102
	APR	644	622	2,743	9,656	802	10,458	5.5%	27,749	9.8%	8,517	19,232
2022	Average to date	670	508	2,784	9,474	723	10,197		26,902		8,136	18,767



Data is derived from NJ MMIS Shared Data Warehouse Issuance files.
Effective July 2013 this data query source was converted to the SDW

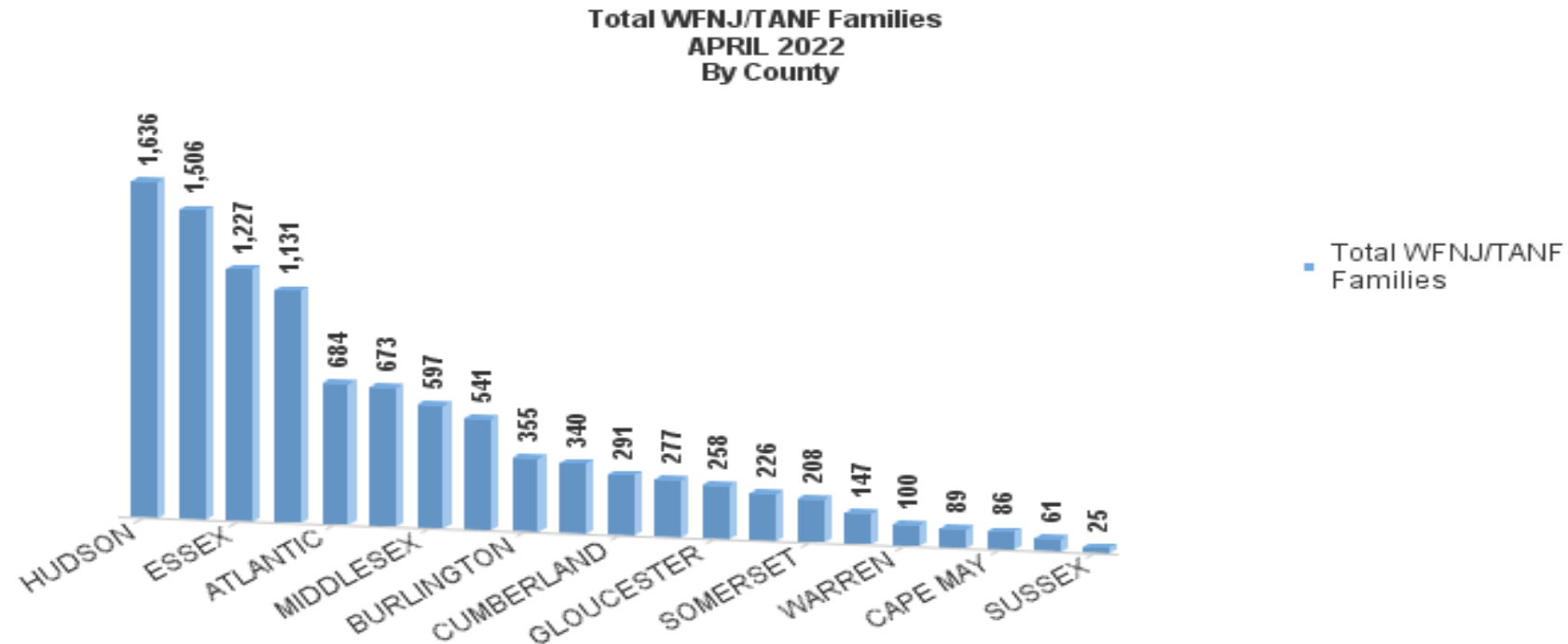
‡ Child-only cases are defined as families in which no eligible adult receives TANF program benefits, yet the family continues to be headed by atleast one of the biological parents, or grandparents, or other appropriate adult.

TABLE 2:
WFNJ/TANF
PROGRAM

NUMBER OF APPLICATIONS AND TERMINATIONS BY COUNTY DURING APRIL 2022

NUMBER OF ELIGIBLE FAMILIES RECEIVING WFNJ/TANF FOR APRIL 2022

County	Cases Added	Cases Closed **	Child-Only Cases ‡	1-Adult Cases	Total Single-Head Families	2-Parent Families	Total WFNJ/TANF Families	%CHNG (3 Mon)	%CHNG (1 Yr.)
ATLANTIC	26	42	229	409	638	46	684	1.0%	2.9%
BERGEN	21	13	51	197	248	29	277	10.4%	12.6%
BURLINGTON	36	15	105	234	339	16	355	7.3%	12.7%
CAMDEN	64	44	486	931	1,417	89	1,506	6.4%	17.8%
CAPE MAY	5	4	27	55	82	4	86	7.5%	3.6%
CUMBERLAND	12	32	113	158	271	20	291	1.0%	0.3% *
ESSEX	92	78	279	884	1,163	64	1,227	2.5%	-25.8% *
GLOUCESTER	16	34	67	180	247	11	258	-3.0%	2.4%
HUDSON	113	122	306	1,165	1,471	165	1,636	1.3%	14.6%
HUNTERDON	3	1	8	44	52	9	61	8.9%	35.6% Δ
MERCER	49	38	204	443	647	26	673	6.8%	16.4%
MIDDLESEX	27	35	193	371	564	33	597	0.5%	12.2%
MONMOUTH	23	12	63	154	217	9	226	11.9%	20.9%
MORRIS	12	4	23	53	76	13	89	9.9%	8.5%
OCEAN	21	12	68	253	321	19	340	5.6%	7.3%
PASSAIC	45	47	294	760	1,054	77	1,131	1.9%	6.2%
SALEM	11	15	34	92	126	21	147	-1.3%	24.6% Δ
SOMERSET	15	7	44	145	189	19	208	6.7%	16.2%
SUSSEX	2	0	7	13	20	5	25	13.6%	8.7%
UNION	39	51	119	305	424	117	541	3.8%	21.6% Δ
WARREN	12	16	23	67	90	10	100	-9.9%	-24.8% *
NJ Total	644	622	2,743	6,913	9,656	802	10,458	3.4%	5.5%



Data is derived from NJ MMIS Shared Data Warehouse Issuance files.
Effective July 2013 this data query source was converted to the SDW

‡ Child-only cases are defined as families in which no eligible adult receives TANF program benefits, yet the family continues to be headed by at least one of the biological parents, or grandparents, or other appropriate adult

** 'Cases closed' include cases that received a benefit in the prior month, but did not receive any TANF benefit for the report month.
Δ=higher caseload % change *=lower caseload % change

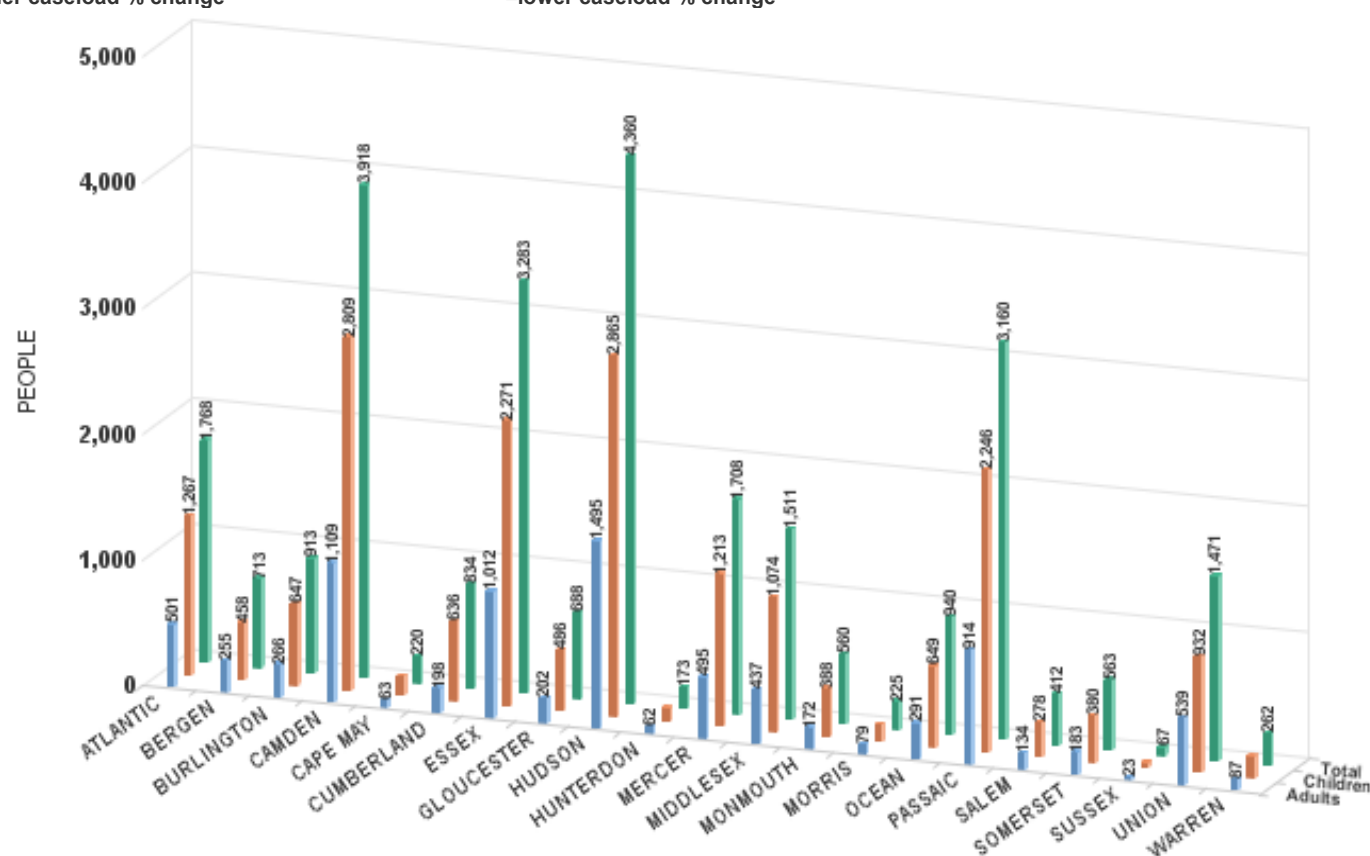
TABLE 2B :

WFNJ/TANF
PROGRAMNUMBER OF PARTICIPATING PERSONS, ADULTS, AND CHILDREN
BY COUNTY FOR APRIL 2022PERSONS

County	Adults	Children	Child/Adult Ratio	Total Persons	% Chng (1 Yr)	Persons Per Case
ATLANTIC	501	1,267	2.53	1,768	6.7%	2.58
BERGEN	255	458	1.80	713	16.1%	2.57
BURLINGTON	266	647	2.43	913	15.7%	2.57
CAMDEN	1,109	2,809	2.53	3,918	23.6%	2.60
CAPE MAY	63	157	2.49	220	6.3%	2.56
CUMBERLAND	198	636	3.21	834	2.1%	*
ESSEX	1,012	2,271	2.24	3,283	-23.3%	*
GLOUCESTER	202	486	2.41	688	12.6%	2.67
HUDSON	1,495	2,865	1.92	4,360	21.8%	2.67
HUNTERDON	62	111	1.79	173	45.4%	Δ
MERCER	495	1,213	2.45	1,708	17.8%	2.54
MIDDLESEX	437	1,074	2.46	1,511	12.8%	2.53
MONMOUTH	172	388	2.26	560	30.5%	Δ
MORRIS	79	146	1.85	225	11.4%	2.53
OCEAN	291	649	2.23	940	11.5%	2.76
PASSAIC	914	2,246	2.46	3,160	11.4%	2.79
SALEM	134	278	2.07	412	35.1%	Δ
SOMERSET	183	380	2.08	563	21.1%	2.71
SUSSEX	23	44	1.91	67	4.7%	2.68
UNION	539	932	1.73	1,471	28.7%	2.72
WARREN	87	175	2.01	262	-26.6%	*
NJ Total	8,517	19,232	2.26	27,749	9.8%	2.65

Δ=higher caseload % change

*=lower caseload % change

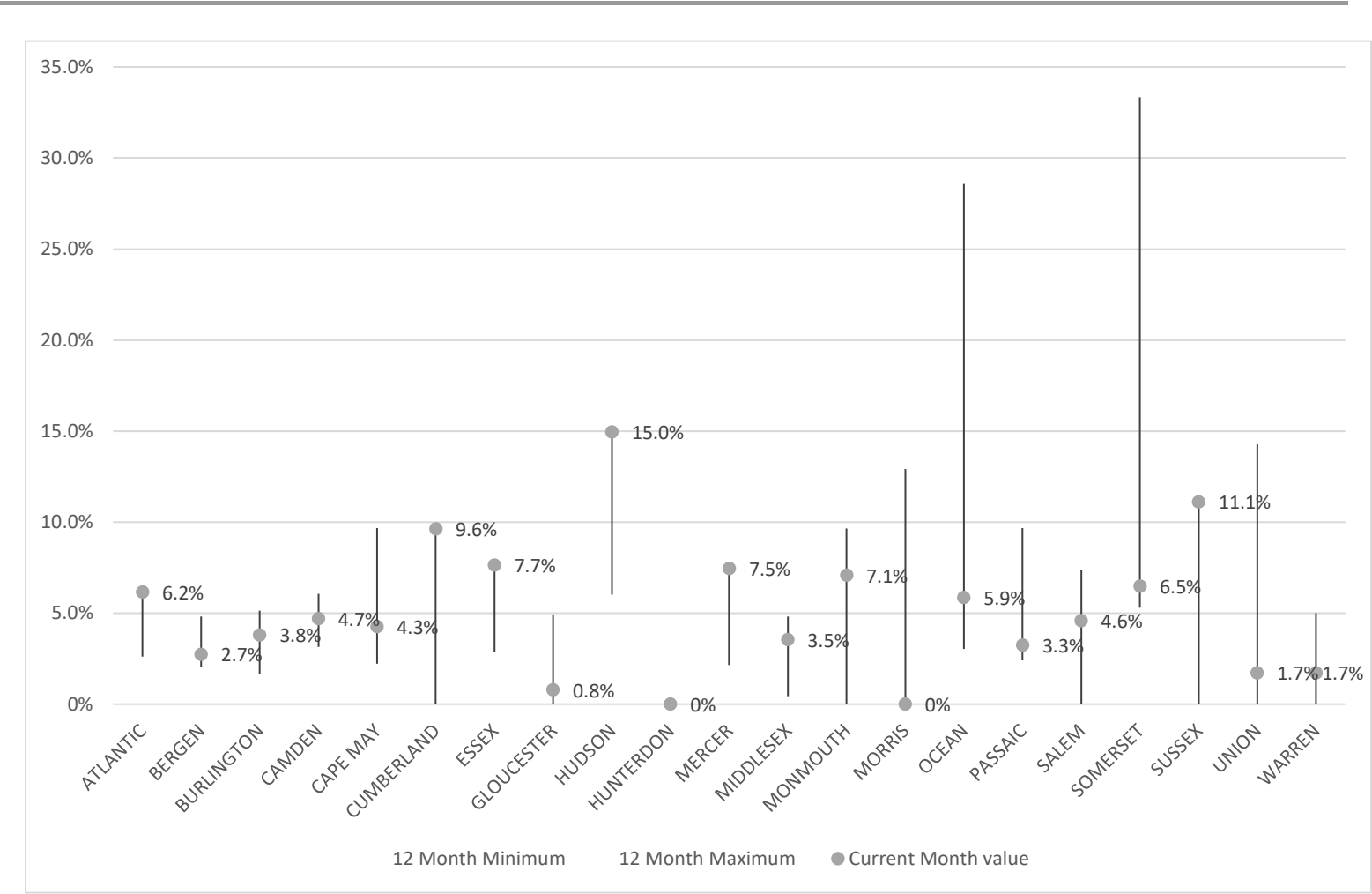


Data is derived from NJ MMIS Shared Data Warehouse Issuance files.

Effective July 2013 this data query source was converted to the SDW

TABLE 3 :

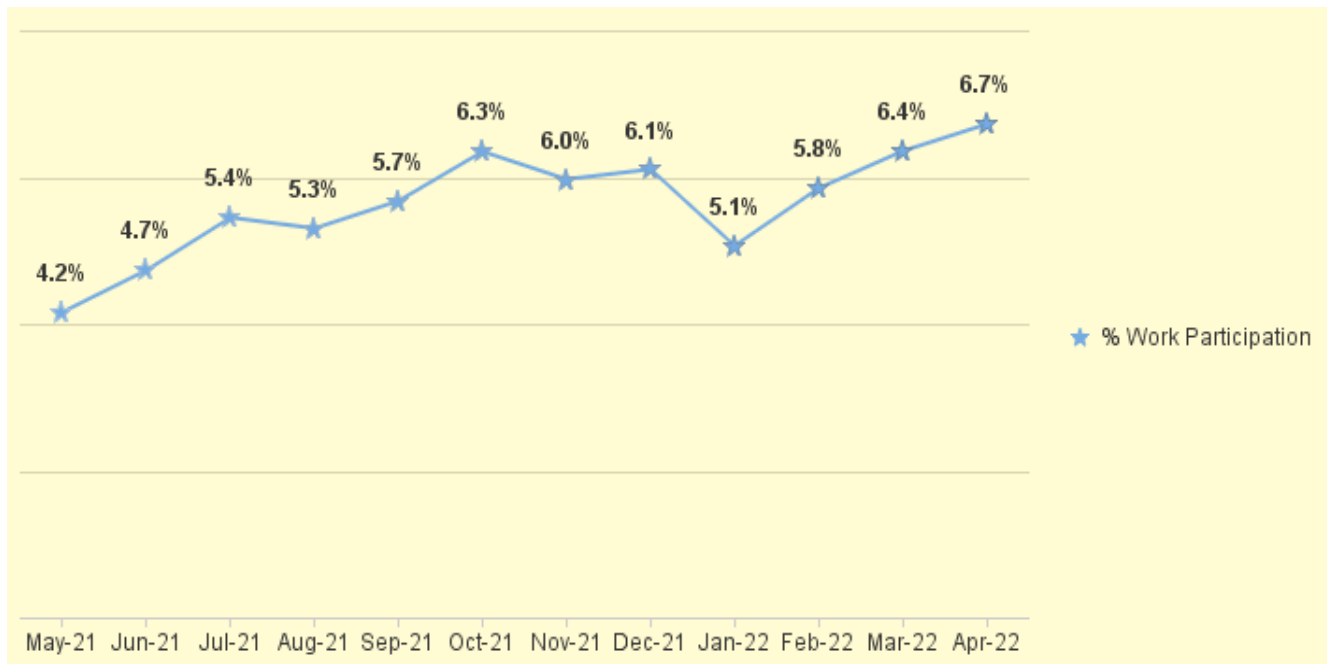
Work Participation Rates Achieved Over 12 Month Period
Ending with APRIL 2022



Data is derived from NJ MMIS Shared Data Warehouse Issuance files.
Effective July 2013 this data query source was converted to the SDW

TABLE 4 :

**WFNJ/TANF Work Participation Rates
for 12-Month Period Ending with APRIL 2022 Statewide**



* The Work Participation rate measures the number of countable Temporary Assistance for Needs Families (TANF) participants based on federal formula. The reported rate is considered to be preliminary until officially calculated by the federal government soon after the close of each federal fiscal year.

TABLE 5 :

NJ SNAP

(FOOD STAMPS)

NUMBER OF PARTICIPATING HOUSEHOLDS, PERSONS, ADULTS
AND CHILDREN FOR APRIL 2022 (STATEWIDE)

APRIL 2020 THROUGH APRIL 2022

		HOUSEHOLDS				PERSONS					People with a disability
		WFNJ/ TANF	Other low income	Total	% CHNG (1 YR)	Adults	Children	TOTAL	% CHNG (1 YR)	Age 60+	
2020	APR	11,112	337,037	348,149	0.3%	373,744	309,095	682,839	-0.6%	118,173	204,375
	MAY	11,513	353,998	365,511	5.2%	394,281	323,636	717,917	4.4%	119,744	208,152
	JUN	11,522	358,302	369,824	6.7%	398,959	326,357	725,316	5.9%	120,137	209,224
	JUL	11,336	364,797	376,133	9.4%	405,652	329,166	734,818	8.1%	120,881	211,115
	AUG	11,044	373,293	384,337	10.8%	414,644	333,705	748,349	9.0%	118,173	204,375
	SEP	10,928	384,063	394,991	15.7%	426,710	342,621	769,331	14.1%	122,341	214,255
	OCT	10,605	393,716	404,321	17.8%	437,538	350,440	787,978	16.2%	123,068	216,012
	NOV	10,335	395,876	406,211	18.7%	440,136	350,631	790,767	17.1%	123,104	216,208
	DEC	10,308	401,212	411,520	20.8%	446,083	354,408	800,491	19.3%	123,498	221,131
2020	Average	10,790	361,610	372,400		401,036	326,988	728,024		120,180	209,182
2021	JAN	10,214	409,050	419,264	24.8%	454,910	360,490	815,400	23.6%	123,751	221,129
	FEB	9,980	413,080	423,060	25.6%	459,801	362,760	822,561	24.4%	123,888	221,585
	MAR	9,632	418,259	427,891	27.7%	465,302	366,223	831,525	26.5%	124,614	222,961
	APR	9,474	423,186	432,660	24.3%	470,412	369,625	840,037	23.0%	125,182	224,256
	MAY	9,371	428,961	438,332	19.9%	476,827	373,151	849,978	18.4%	125,750	225,339
	JUN	9,833	440,525	450,358	21.8%	490,430	393,310	883,740	21.8%	126,085	227,479
	JUL	9,067	437,889	446,956	18.8%	485,975	379,528	865,503	17.8%	126,552	227,352
	AUG	9,070	442,333	451,403	17.4%	490,577	383,106	873,683	16.7%	127,091	228,513
	SEP	9,561	447,902	457,463	15.8%	497,122	390,345	887,467	15.4%	127,550	229,863
	OCT	9,822	452,139	461,961	14.3%	502,415	388,925	891,340	13.1%	128,700	231,751
	NOV	9,967	455,343	465,310	14.5%	506,476	391,904	898,380	13.6%	129,292	233,050
	DEC	10,138	458,239	468,377	13.8%	510,116	392,757	902,873	12.8%	129,744	238,680
2021	Average	9,677	435,576	445,253		484,197	379,344	863,541		126,517	227,663
2022	JAN	10,418	457,935	468,353	11.7%	509,801	392,651	902,452	10.7%	157,425	236,238
	FEB	10,486	451,733	462,219	9.3%	503,693	385,199	888,892	8.1%	156,540	232,864
	MAR	10,588	455,766	466,354	9.0%	508,290	388,977	897,267	7.9%	158,331	234,617
	APR	10,706	439,659	450,365	4.1%	491,276	375,105	866,381	3.1%	156,504	231,071
2022	Average to date	10,550	451,273	461,823		503,265	385,483	888,748		157,200	233,698

This Table is based on those Households & Persons that recived SNAP issuances (benefits) during the month

Data is derived from NJ MMIS Shared Data Warehouse.

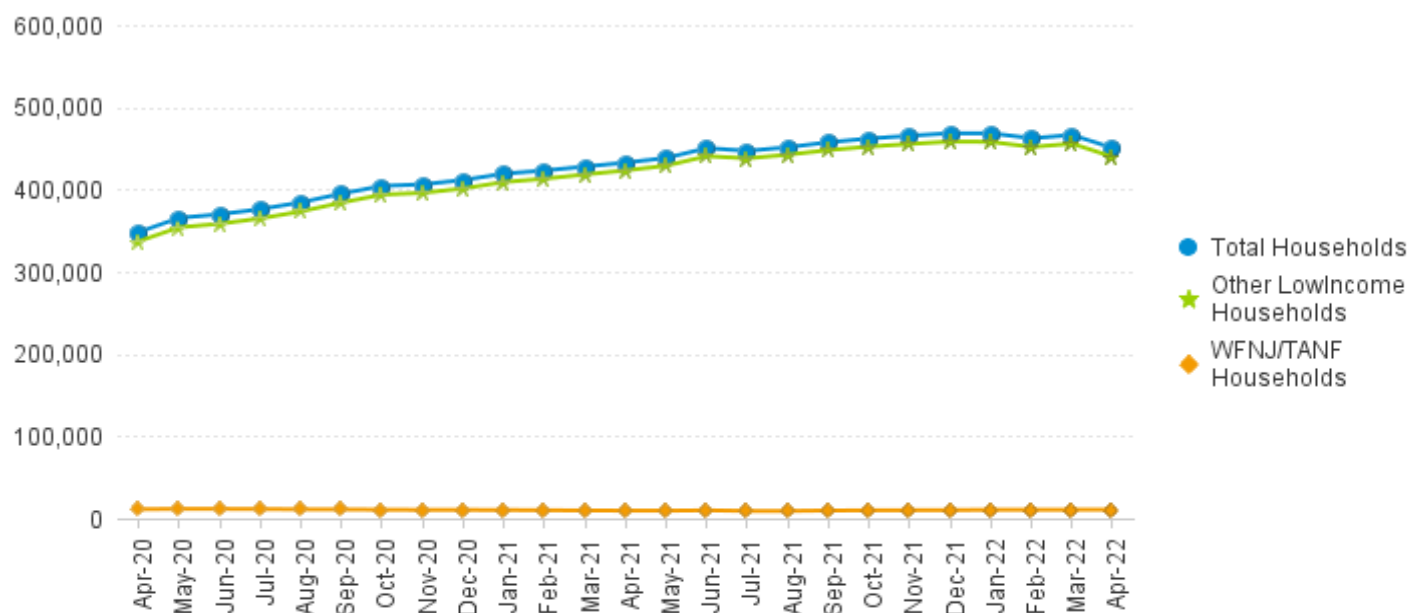
Effective July 2013 this data query source was converted to the SDW.

* Age 60+ and People with a disability columns are independent subsets of total persons. An individual might appear in both columns

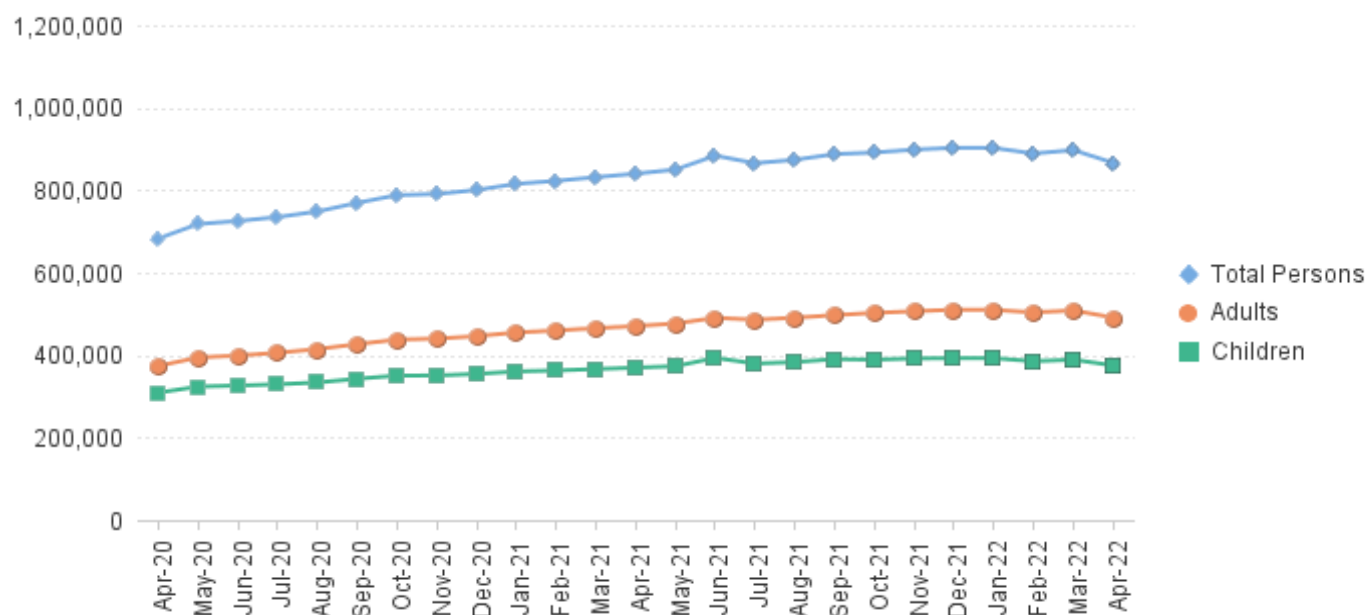
TABLE 6:

NJ SNAP
(FOOD STAMPS)TRENDS FOR PARTICIPATING HOUSEHOLDS & PERSONS
APRIL 2020 THROUGH APRIL 2022 (STATEWIDE)

Statewide NJ SNAP Households: APRIL 2020 Through APRIL 2022



Statewide NJ SNAP Persons: APRIL 2020 Through APRIL 2022



Data is derived from NJ MMIS Shared Data Warehouse Issuance files.

Effective July 2013 this data query source was converted to the SDW

TABLE 7 :

NJ SNAP

**NUMBER OF PARTICIPATING HOUSEHOLDS, PERSONS, ADULTS
AND CHILDREN BY COUNTY FOR APRIL 2022**

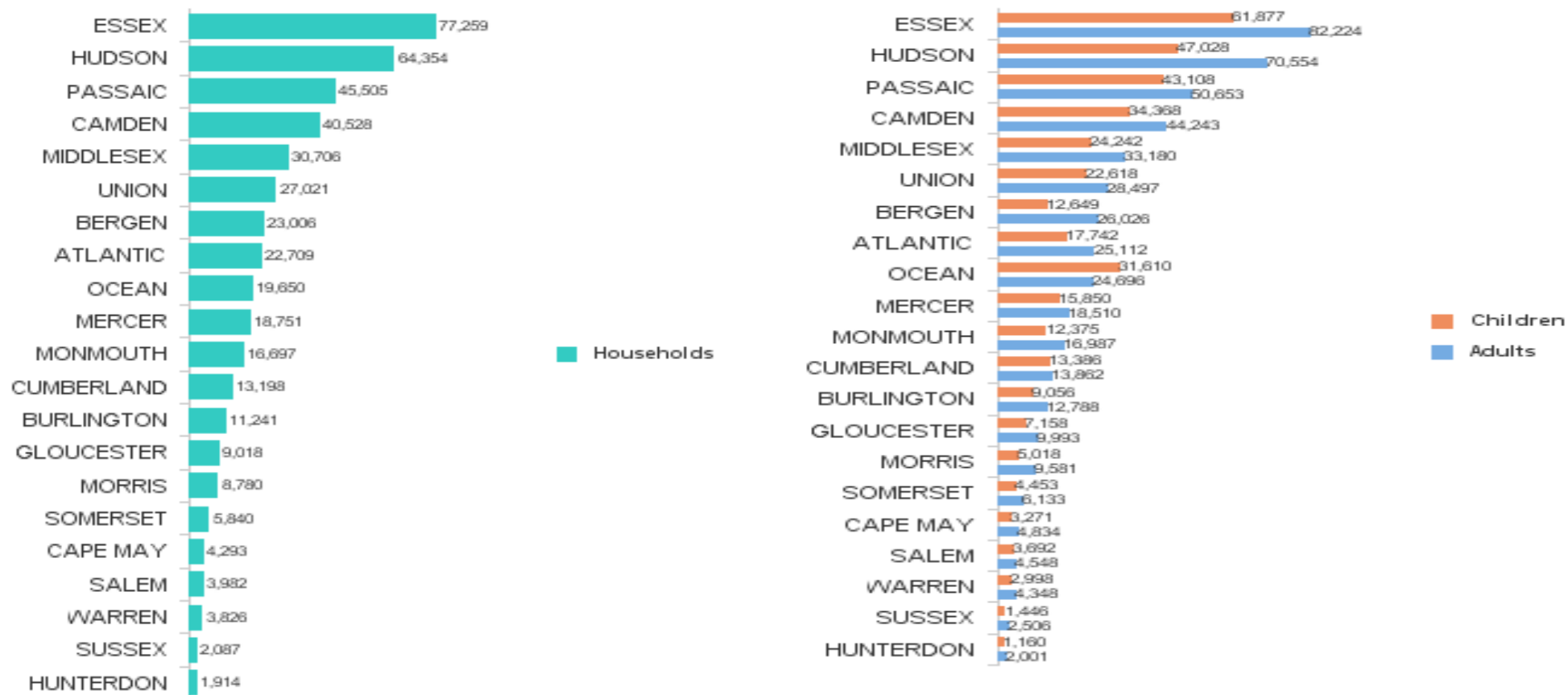
County	HOUSEHOLDS				PERSONS							
	WFNJ/ TANF	Other low income	TOTAL	% Chng (1 Yr)	Adults	Children	TOTAL	% Chng (1 Yr)	Age 60+	People with a disability		
ATLANTIC	681	22,028	22,709	6.9%	Δ	25,112	17,742	42,854	5.5%	6,939	11,379	
BERGEN	282	22,724	23,006	3.7%		26,026	12,649	38,675	4.7%	13,954	16,035	
BURLINGTON	362	10,879	11,241	-3.2%		12,788	9,056	21,844	-3.7%	3,632	6,681	
CAMDEN	1,429	39,099	40,528	7.7%	Δ	44,243	34,368	78,611	6.0%	Δ	10,755	20,278
CAPE MAY	92	4,201	4,293	-1.1%		4,834	3,271	8,105	-0.8%		1,335	2,308
CUMBERLAND	274	12,924	13,198	-1.3%		13,862	13,386	27,248	-1.4%		3,546	7,113
ESSEX	1,578	75,681	77,259	14.5%	Δ	82,224	61,877	144,101	10.5%	Δ	20,806	32,991
GLOUCESTER	240	8,778	9,018	-2.8%		9,993	7,158	17,151	-3.9%		2,952	6,016
HUDSON	1,626	62,728	64,354	2.6%		70,554	47,028	117,582	1.2%		23,497	29,927
HUNTERDON	48	1,866	1,914	6.6%		2,001	1,160	3,161	4.5%		716	1,075
MERCER	701	18,050	18,751	0.3%		18,510	15,850	34,360	-0.1%		5,468	10,529
MIDDLESEX	611	30,095	30,706	4.5%		33,180	24,242	57,422	3.7%		14,028	17,940
MONMOUTH	231	16,466	16,697	-5.6%	*	16,987	12,375	29,362	-6.0%	*	6,605	9,709
MORRIS	120	8,660	8,780	5.4%		9,581	5,018	14,599	4.0%		4,785	5,500
OCEAN	341	19,309	19,650	4.5%		24,696	31,610	56,306	7.4%	Δ	6,545	10,450
PASSAIC	1,089	44,416	45,505	-1.2%		50,653	43,108	93,761	-1.0%		15,965	20,710
SALEM	160	3,822	3,982	-4.8%		4,548	3,692	8,240	-3.2%		1,138	2,255
SOMERSET	195	5,645	5,840	0.6%		6,133	4,453	10,586	-0.2%		2,468	3,474
SUSSEX	34	2,053	2,087	-7.9%	*	2,506	1,446	3,952	-5.0%	*	882	1,503
UNION	512	26,509	27,021	6.2%		28,497	22,618	51,115	5.3%		9,216	12,885
WARREN	100	3,726	3,826	-11.5%	*	4,348	2,998	7,346	-12.2%	*	1,272	2,313
NJ TOTAL	10,706	439,659	450,365	4.1%		491,276	375,105	866,381	3.1%		156,504	231,071

Δ=higher caseload % change

*=lower caseload % change

Total NJ SNAP Recipients

APRIL 2022 by County



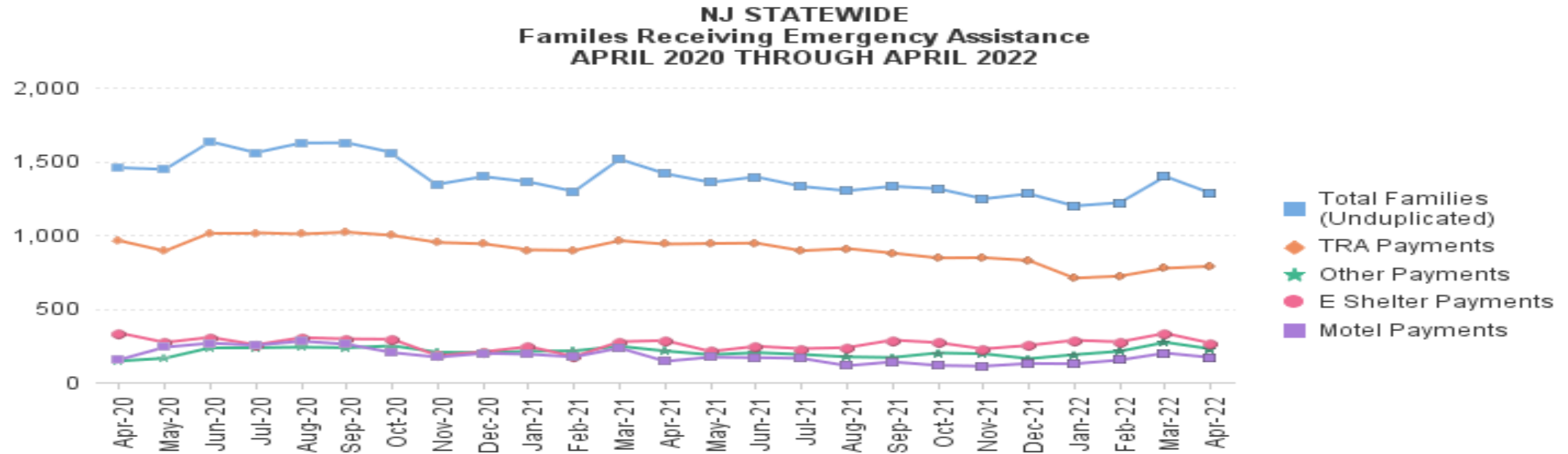
Data is derived from NJ MMIS Shared Data Warehouse.

Effective July 2013 this data query source was converted to the SDW.

* Age 60+ and People with a disability columns are independent subsets of total persons. An individual might appear in both columns

TABLE 8 :
EMERGENCY ASSISTANCE (STATEWIDE)
TOTAL NUMBER OF ELIGIBLE FAMILIES RECEIVING EMERGENCY ASSISTANCE PAYMENTS
APRIL 2020 THROUGH APRIL 2022 - STATEWIDE

		Total WFNJ/EA Families (Undupl)	% CHNG (1 YR)	Temp Rent Asst. Payments (Undupl)	% CHNG (1 YR)	Motel Housing Payments (Undupl)	% CHNG (1 YR)	Shelter/Transitional Housing Payments (Undupl)	% CHNG (1 YR)	Other WFNJ/EA Payments (Undupl)	% CHNG (1 YR)
2020	APR	1,455	-5.9%	960	18.4%	153	-12.1%	334	-23.9%	144	-64.0%
	MAY	1,444	-9.1%	890	7.9%	238	63.0%	270	-41.0%	163	-63.5%
	JUN	1,632	5.9%	1,014	23.8%	265	61.6%	305	-28.6%	234	-43.3%
	JUL	1,557	3.0%	1,014	33.2%	251	88.7%	254	-43.3%	234	-42.2%
	AUG	1,623	-3.0%	1,005	18.0%	279	75.5%	303	-40.9%	238	-46.3%
	SEP	1,624	-1.0%	1,018	22.1%	258	41.0%	294	-32.1%	234	-47.9%
	OCT	1,558	-14.5%	996	16.1%	201	-17.6%	292	-42.5%	247	-54.8%
	NOV	1,343	-13.6%	948	8.8%	170	19.7%	180	-52.9%	204	-50.6%
	DEC	1,395	-14.5%	939	9.8%	196	2.1%	206	-53.2%	201	-51.8%
2020	Average	1,560		970		220		303		274	
2021	JAN	1,359	-23.1%	898	-5.4%	190	-24.3%	242	-42.7%	210	-59.1%
	FEB	1,294	-19.1%	894	-4.1%	172	-5.0%	174	-52.3%	213	-47.9%
	MAR	1,513	-12.2%	960	-2.0%	232	19.0%	275	-32.3%	244	-47.2%
	APR	1,415	-2.7%	937	-2.4%	142	-7.2%	283	-15.3%	212	47.2%
	MAY	1,356	-6.1%	941	5.7%	170	-28.6%	209	-22.6%	187	14.7%
	JUN	1,393	-14.6%	944	-6.9%	167	-37.0%	244	-20.0%	201	-14.1%
	JUL	1,328	-14.7%	892	-12.0%	162	-35.5%	228	-10.2%	189	-19.2%
	AUG	1,299	-20.0%	907	-9.8%	112	-59.9%	235	-22.4%	172	-27.7%
	SEP	1,329	-18.2%	876	-13.9%	138	-46.5%	286	-2.7%	168	-28.2%
	OCT	1,313	-15.7%	843	-15.4%	114	-43.3%	269	-7.9%	199	-19.4%
	NOV	1,244	-7.4%	845	-10.9%	109	-35.9%	226	25.6%	193	-5.4%
	DEC	1,278	-8.4%	826	-12.0%	127	-35.2%	250	21.4%	160	-20.4%
2021	Average	1,343		897		153		243		196	
2022	JAN	1,196	-12.0%	706	-21.4%	125	-34.2%	285	17.8%	187	-11.0%
	FEB	1,218	-5.9%	720	-19.5%	151	-12.2%	274	57.5%	210	-1.4%
	MAR	1,396	-7.7%	773	-19.5%	198	-14.7%	332	20.7%	271	11.1%
	APR	1,282	-9.4%	787	-16.0%	168	18.3%	265	-6.4%	226	6.6%
2022	Average to date	1,273		747		161		289		224	



WFNJ/EA data is derived from NJ MMIS Shared Data Warehouse.

Effective July 2013 this data query source was converted to the SDW.

* Effective Feb '11 Transitional Housing Payments were removed from 'Other EA Payments' and added to 'Shelter Payments'.

TABLE 9 :
EMERGENCY ASSISTANCE (BY COUNTY)
TOTAL NUMBER OF ELIGIBLE FAMILIES RECEIVING EMERGENCY ASSISTANCE PAYMENTS BY COUNTY (UNDULICATED CASES) FOR APRIL 2022

County	TOTAL WFNJ/EA Families (Undupl)	% CHNG From APR 21		Temp Rent Asst. Payments (Undupl)	Motel Housing Payments (Undupl)	Shelter/Transitional Housing Payments (Undupl)	Other WFNJ/EA Payments (Undupl)	SSI Recipients Receiving EA **
ATLANTIC	36	-46.3%	*	33	0	2	4	39
BERGEN	42	-16.0%		28	2	10	5	48
BURLINGTON	68	23.6%		3	22	44	2	52
CAMDEN	29	-31.0%	*	11	7	10	3	20
CAPE MAY	18	0%		8	10	0	1	11
CUMBERLAND	0	0%		0	0	0	0	0
ESSEX	82	-48.1%	*	36	0	42	8	13
GLOUCESTER	11	-8.3%		3	1	5	2	14
HUDSON	221	17.6%		170	10	41	43	78
HUNTERDON	13	85.7%	Δ	10	0	0	4	9
MERCER	124	55.0%	Δ	61	34	14	35	70
MIDDLESEX	98	-29.0%		82	0	0	39	44
MONMOUTH	28	47.4%		1	6	25	0	63
MORRIS	14	16.7%		10	4	0	1	11
OCEAN	78	-25.7%		50	17	0	21	31
PASSAIC	220	-15.7%		176	5	29	26	24
SALEM	4	300.0%	Δ	1	1	2	0	2
SOMERSET	62	-18.4%		46	7	6	18	55
SUSSEX	3	0%		0	1	2	1	1
UNION	117	7.3%		51	34	32	12	35
WARREN	14	-12.5%		7	7	1	1	2
NJ Total	1,282	-9.4%		787	168	265	226	622

Δ=higher caseload % change

*=lower caseload % change

** SSI-EA includes pay codes 22 and 24, data is derived from NJ Division of Family Development FAMIS Report #FM430-03A

WFNJ/EA data is derived from NJ MMIS Shared Data Warehouse.

Effective July 2013 this data query source was converted to the SDW.

Number WFNJ Families Receiving EA by County
APRIL 2022

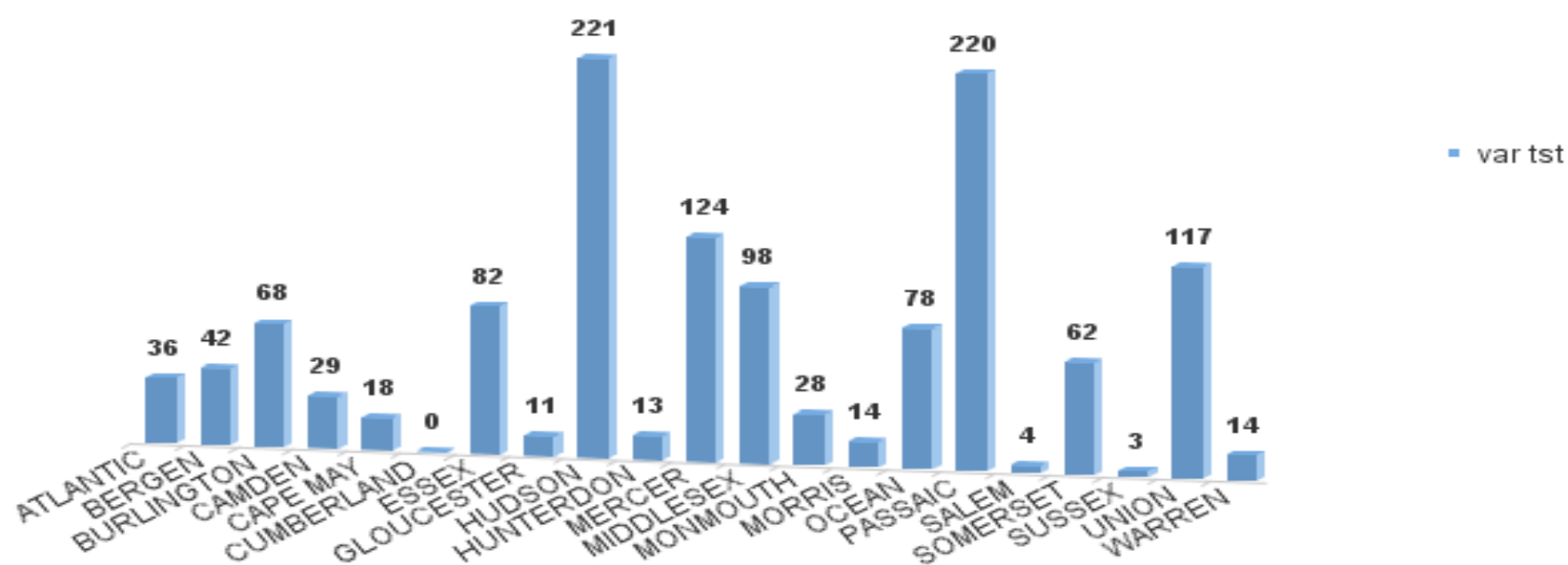


TABLE 10:

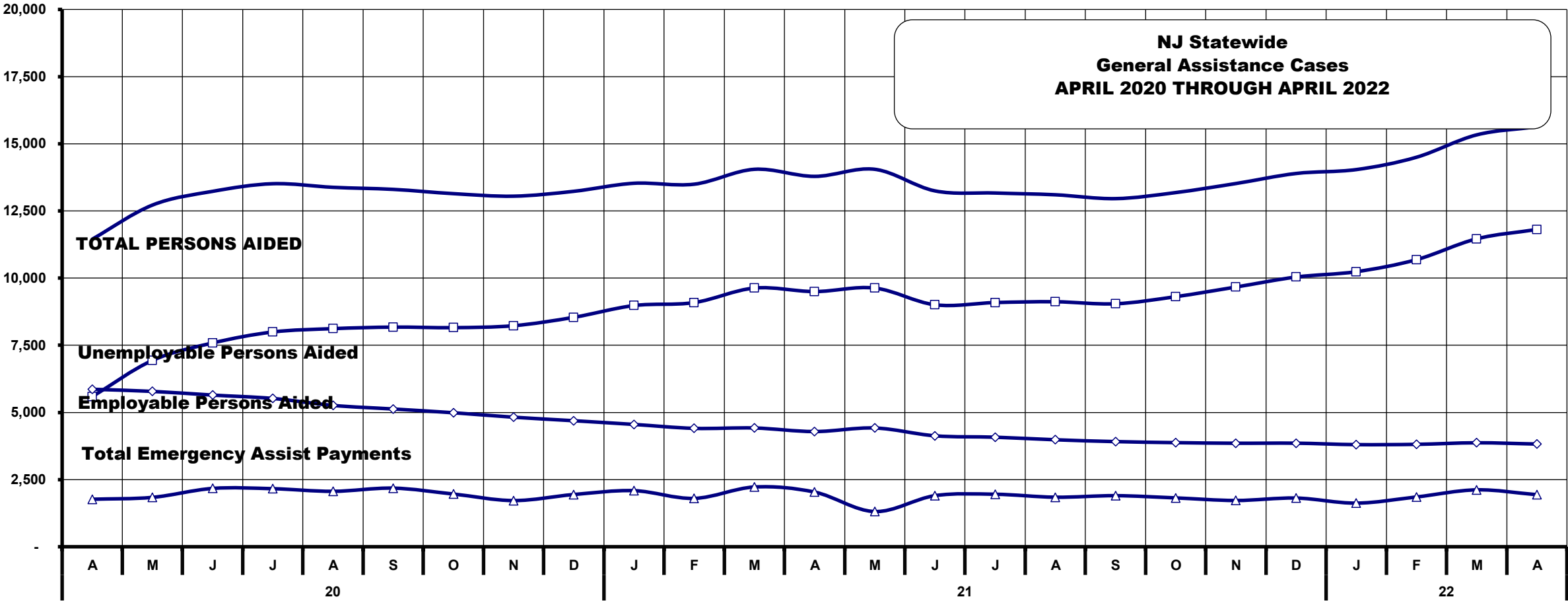
GENERAL

ASSISTANCE

PROGRAM

NUMBER OF EMPLOYABLE AND UNEMPLOYABLE RECIPIENTS
AND EMERGENCY ASSISTANCE PAYMENTS - STATEWIDE
APRIL 2020 THROUGH APRIL 2022

		Total Cases					Emergency Assistance Cases				
		Employable	% Chng (1 Yr)	Unemployable	% Chng (1 Yr)	Total	% Chng (1 Yr)	Temporary Rental Assistance	Other GA-EA	Total	% Chng (1 Yr)
2020	APR	5,587	32.2%	5,862	-6.2%	11,449	9.3%	913	855	1,768	-18.3%
	MAY	6,936	66.9%	5,783	-6.9%	12,719	22.7%	929	909	1,838	-35.4%
	JUN	7,585	87.4%	5,645	-8.2%	13,230	29.8%	916	1,255	2,171	4.1%
	JUL	7,994	97.4%	5,520	-9.2%	13,514	33.4%	905	1,256	2,161	8.4%
	AUG	8,119	86.7%	5,261	-16.0%	13,380	26.1%	875	1,188	2,063	-1.5%
	SEP	8,176	93.4%	5,127	-17.2%	13,303	27.7%	849	1,333	2,182	1.1%
	OCT	8,156	104.9%	4,988	-17.1%	13,144	31.5%	855	1,107	1,962	-11.2%
	NOV	8,228	111.0%	4,822	-19.5%	13,050	32.0%	835	884	1,719	-17.2%
	DEC	8,540	118.0%	4,691	-21.9%	13,231	33.3%	833	1,111	1,944	-4.7%
2020 AVERAGE		6,875		5,461		12,337		885	1,110	1,995	
2021	JAN	8,978	118.5%	4,553	-23.1%	13,531	34.9%	848	1,240	2,088	-1.8%
	FEB	9,089	116.1%	4,407	-25.7%	13,496	33.2%	809	991	1,800	-10.3%
	MAR	9,630	97.8%	4,421	-26.2%	14,051	29.4%	819	1,405	2,224	11.4%
	APR	9,499	70.0%	4,288	-26.9%	13,787	20.4%	832	1,204	2,036	15.2%
	MAY	9,630	38.8%	4,421	-23.6%	14,051	10.5%	819	491	1,310	-28.7%
	JUN	9,007	18.7%	4,130	-32.8%	13,247	0.1%	794	1,108	1,902	-12.4%
	JUL	9,090	13.7%	4,078	-26.1%	13,168	-2.6%	833	1,121	1,954	-9.6%
	AUG	9,120	12.3%	3,982	-24.3%	13,102	-2.1%	753	1,091	1,844	-10.6%
	SEP	9,045	10.6%	3,914	-23.7%	12,959	-2.6%	787	1,114	1,901	-12.9%
	OCT	9,309	14.1%	3,875	-22.3%	13,184	0.3%	757	1,061	1,818	-7.3%
	NOV	9,668	17.5%	3,853	-20.1%	13,521	3.6%	711	1,011	1,722	0.2%
	DEC	10,040	17.6%	3,855	-17.8%	13,895	5.0%	742	1,071	1,813	-6.7%
2021 AVERAGE		9,342		4,148		13,499		792	1,076	1,868	
2022	JAN	10,239	14.0%	3,801	-16.5%	14,040	3.8%	677	947	1,624	-22.2%
	FEB	10,687	17.6%	3,812	-13.5%	14,499	7.4%	727	1,126	1,853	2.9%
	MAR	11,462	19.0%	3,870	-12.5%	15,332	9.1%	719	1,399	2,118	-4.8%
	APR	11,810	24.3%	3,823	-10.8%	15,633	13.4%	742	1,196	1,938	-4.8%
2022 AVERAGE TO DATE		11,050		3,827		14,876		716	1,167	1,883	



Source: NJ Division of Family Development, GA Fiscal Unit

TABLE 11:

GENERAL

ASSISTANCE

PROGRAM

EMPLOYABLE AND UNEMPLOYABLE CASES

AND EMERGENCY ASSISTANCE CASES RECEIVING PAYMENTS BY COUNTY

APRIL 2022

PROGRAM	Total Cases						Emergency Assistance Cases				
	Employable	% Chng (1 Yr)	Unemployable	% Chng (1 Yr)	Total	% Chng (1 Yr)	Temporary Rental Assistance	Other GA-EA	Total	% Chng (1 Yr)	
ATLANTIC	1,324	59.7%	189	-14.5%	1,513	44.1%	Δ	85	25	110	-18.5%
BERGEN	400	24.2%	171	-14.9%	571	9.2%		74	31	105	10.5%
BURLINGTON	520	12.8%	194	-9.3%	714	5.8%		10	129	139	10.3%
CAMDEN	1,922	59.5%	495	1.2%	2,417	42.7%	Δ	37	78	115	-24.8%
CAPE MAY	140	35.9%	47	-7.8%	187	21.4%		15	42	57	-9.5%
CUMBERLAND	344	2.4%	107	4.9%	451	3.0%		0	0	0	-100.0% *
ESSEX	1,121	9.8%	295	-19.8%	1,416	1.9%		19	146	165	2.5%
GLOUCESTER	192	3.2%	106	-27.9%	298	-10.5%		1	9	10	-65.5% *
HUDSON	1,713	-11.1%	448	-18.1%	2,161	-12.6%	*	105	66	171	-7.6%
HUNTERDON	163	147.0%	41	-22.6%	204	71.4%	Δ	10	22	32	18.5% Δ
MERCER	529	41.4%	243	-17.9%	772	15.2%		58	50	108	36.7% Δ
MIDDLESEX	541	7.8%	349	23.3%	890	13.4%		74	81	155	-31.7%
MONMOUTH	305	30.9%	165	-0.6%	470	17.8%		2	108	110	31.0% Δ
MORRIS	228	66.4%	163	9.4%	391	36.7%		44	26	70	-2.8%
OCEAN	426	22.8%	199	-18.1%	625	5.9%		50	71	121	2.5%
PASSAIC	624	41.8%	288	-17.9%	912	15.3%		42	38	80	-3.6%
SALEM	162	14.9%	33	-45.0%	195	-3.0%		0	1	1	-66.7% *
SOMERSET	215	54.7%	52	-22.4%	267	29.6%		42	30	72	-16.3%
SUSSEX	63	1.6%	17	-51.4%	80	-17.5%	*	0	11	11	-50.0%
UNION	744	46.2%	157	-3.1%	901	34.3%		57	207	264	17.9%
WARREN	134	-16.3%	64	-22.9%	198	-18.5%	*	17	25	42	-28.8%
NJ TOTAL	11,810	24.3%	3,823	-10.8%	15,633	13.4%		742	1,196	1,938	-4.8%

Δ= ↑ Caseload %

* = ↓ Caseload %

TABLE 12:
OFFICE OF
CHILD SUPPORT
SERVICES

OFFICE OF CHILD SUPPORT SERVICES
QUARTERLY PERFORMANCE REPORT
STATE SUMMARY
TITLE IV-D SOURCE COLLECTION REPORT
Comparison of Quarter-2 (FFY 2021 vs. FFY 2022)

COLLECTION SOURCE	TOTAL 1/1/2021 - 3/31/2021	% OF TOTAL COLLECTIONS	TOTAL 1/1/2022 - 3/31/2022	% OF TOTAL COLLECTIONS	DOLLAR CHANGE	% CHANGE
FEDERAL TAX	\$11,587,000	3.94%	\$18,598,245	6.65%	\$ 7,011,245	60.51%
STATE TAX	\$433,038	0.15%	\$314,280	0.11%	\$ (118,758)	-27.42%
UIB	\$34,833,880	11.86%	\$7,681,812	2.74%	\$ (27,152,068)	-77.95%
INC WITHHOLD	\$183,805,582	62.57%	\$182,025,127	65.04%	\$ (1,780,455)	-0.97%
FROM OTHER STATES	\$12,170,952	4.14%	\$10,397,345	3.72%	\$ (1,773,607)	-14.57%
ADMIN ENFORCEMENT	\$1,746,080	0.59%	\$5,251,118	0.02%	\$ 3,505,038	200.74%
OTHER	\$49,160,906	16.74%	\$55,594,425	19.86%	\$ 6,433,519	13.09%
TOTAL COLLECTIONS*	\$293,737,438	100%	\$279,862,352	100%	\$ (13,875,086)	-4.72%
DISBURSED COLLECTIONS**	\$260,626,114		\$241,423,424		\$ (19,202,690)	-7.37%

* Includes collections on both current support and arrears.

** Includes collections on both current support and arrears; also includes money sent to other states.

SOURCE: NJKiDS (Based on Federal Quarterly Report of Collections - OCSE-34A except Disbursed Collections)

Disbursed Collections obtained from Federal Data Report - OCSE-157, which is reported annually to Congress and used in the calculation of incentive dollars earned by each state.

TABLE 13:
OFFICE OF
CHILD SUPPORT
SERVICES

OFFICE OF CHILD SUPPORT SERVICES
STATE SUMMARY
TITLE IV-D PATERNITY ESTABLISHMENT REPORT
Comparison of April (FFY 2021 vs. FFY 2022)

	APRIL 2021			APRIL 2022			Increase or Decrease (-) from FFY 2021 to FFY 2022
County	Total Children Born Out of Wedlock*	Number of Paternities Established	Percent of Paternities Established	Total Children Born Out of Wedlock*	Number of Paternities Established	Percent of Paternities Established	
Atlantic	5,780	5,768	99.8%	5,305	13,114	247.2%	147.4%
Bergen	2,903	2,859	98.5%	2,665	14,751	553.5%	455.0%
Burlington	4,487	4,385	97.7%	4,095	15,179	370.7%	272.9%
Camden	14,472	14,168	97.9%	13,384	32,756	244.7%	146.8%
Cape May	1,132	1,121	99.0%	1,017	3,592	353.2%	254.2%
Cumberland	6,144	6,074	98.9%	5,772	13,564	235.0%	136.1%
Essex	22,474	21,419	95.3%	20,547	44,468	216.4%	121.1%
Gloucester	3,991	3,948	98.9%	3,641	12,275	337.1%	238.2%
Hudson	9,129	8,782	96.2%	8,230	22,777	276.8%	180.6%
Hunterdon	227	226	99.6%	196	1,796	916.3%	816.8%
Mercer	6,347	6,142	96.8%	5,688	14,733	259.0%	162.2%
Middlesex	5,813	5,663	97.4%	5,416	20,961	387.0%	289.6%
Monmouth	4,539	4,397	96.9%	4,005	16,013	399.8%	303.0%
Morris	1,145	1,129	98.6%	1,017	7,289	716.7%	618.1%
Ocean	4,444	4,342	97.7%	4,098	17,756	433.3%	335.6%
Passaic	9,202	8,905	96.8%	8,332	22,060	264.8%	168.0%
Salem	2,508	2,415	96.3%	2,388	4,685	196.2%	99.9%
Somerset	1,255	1,221	97.3%	1,140	5,590	490.4%	393.1%
Sussex	460	456	99.1%	415	3,254	784.1%	685.0%
Union	9,377	8,949	95.4%	8,991	21,764	242.1%	146.6%
Warren	833	823	98.8%	647	3,292	508.8%	410.0%
NJ TOTALS	116,662	\$113,192	97.0%	106,989	311,669	291.3%	194.3%

SOURCE: NJKiDS (Based on Federal Performance Measures - OCSE-157)

* Information on Out of Wedlock Births obtained from NJ Bureau of Vital Statistics

TABLE 14:
OFFICE OF
CHILD SUPPORT
SERVICES

OFFICE OF CHILD SUPPORT SERVICES
STATE SUMMARY
TITLE IV-D REPORT OF CASES WITH ORDERS
Comparison of April (FFY 2021 vs. FFY 2022)

	APRIL 2021			APRIL 2022			Increase or Decrease (-) from FFY 2021 to FFY 2022
County	Total Cases	Cases with Orders	% of Cases with Orders	Total Cases	Cases with Orders	% of Cases with Orders	
Atlantic	10,605	9,875	93.1%	10,085	9,337	92.6%	-0.5%
Bergen	10,808	10,586	97.9%	10,288	10,024	97.4%	-0.5%
Burlington	11,744	11,115	94.6%	11,243	10,507	93.5%	-1.2%
Camden	25,946	24,689	95.2%	24,819	23,539	94.8%	-0.3%
Cape May	2,749	2,580	93.9%	2,613	2,468	94.5%	0.6%
Cumberland	10,927	10,546	96.5%	10,532	10,043	95.4%	-1.2%
Essex	36,770	32,339	87.9%	34,671	30,384	87.6%	-0.3%
Gloucester	9,413	9,109	96.8%	9,037	8,603	95.2%	-1.6%
Hudson	18,174	16,367	90.1%	17,202	15,461	89.9%	-0.2%
Hunterdon	1,291	1,216	94.2%	1,216	1,139	93.7%	-0.5%
Mercer	12,088	11,145	92.2%	11,452	10,332	90.2%	-2.0%
Middlesex	15,608	14,775	94.7%	15,096	14,118	93.5%	-1.1%
Monmouth	12,129	11,641	96.0%	11,271	10,665	94.6%	-1.4%
Morris	5,263	5,133	97.5%	5,045	4,859	96.3%	-1.2%
Ocean	13,223	12,784	96.7%	12,574	12,081	96.1%	-0.6%
Passaic	17,550	15,514	88.4%	16,525	14,483	87.6%	-0.8%
Salem	3,826	3,678	96.1%	3,618	3,450	95.4%	-0.8%
Somerset	4,092	3,896	95.2%	3,894	3,662	94.0%	-1.2%
Sussex	2,353	2,323	98.7%	2,262	2,217	98.0%	-0.7%
Union	16,552	15,844	95.7%	16,025	15,187	94.8%	-1.0%
Warren	2,653	2,539	95.7%	2,284	2,174	95.2%	-0.5%
NJ TOTALS	243,764	227,694	93.4%	231,752	214,733	92.7%	-0.8%

SOURCE: NJKiDS (Based on Federal Performance Measures - OCSE-157)

TABLE 15:
OFFICE OF
CHILD SUPPORT
SERVICES

OFFICE OF CHILD SUPPORT SERVICES
STATE SUMMARY
TITLE IV-D COLLECTIONS ON CURRENT SUPPORT

Comparison of April (FFY 2021 vs. FFY 2022)

	APRIL 2021			APRIL 2022			Increase or Decrease (-) from FFY 2021 to FFY 2022
County	Total Current Support Due	Total Current Support Distributed	Total Collection Rate	Total Current Support Due	Total Current Support Distributed	Total Collection Rate	
Atlantic	\$3,557,007	\$2,398,868	67.4%	\$3,312,870	\$2,078,843	62.8%	-4.7%
Bergen	\$7,811,444	\$6,040,842	77.3%	\$7,285,984	\$5,428,788	74.5%	-2.8%
Burlington	\$5,268,392	\$3,796,257	72.1%	\$4,855,709	\$3,303,387	68.0%	-4.0%
Camden	\$7,562,993	\$4,744,742	62.7%	\$6,972,023	\$4,074,106	58.4%	-4.3%
Cape May	\$1,044,583	\$740,075	70.8%	\$963,967	\$620,784	64.4%	-6.4%
Cumberland	\$2,886,681	\$1,775,489	61.5%	\$2,680,281	\$1,561,536	58.3%	-3.2%
Essex	\$10,022,870	\$6,245,321	62.3%	\$9,273,264	\$5,349,326	57.7%	-4.6%
Gloucester	\$3,977,503	\$2,756,844	69.3%	\$3,677,427	\$2,417,973	65.8%	-3.6%
Hudson	\$6,825,400	\$4,780,583	70.0%	\$6,370,197	\$4,117,642	64.6%	-5.4%
Hunterdon	\$1,132,750	\$916,589	80.9%	\$1,040,130	\$850,817	81.8%	0.9%
Mercer	\$3,778,850	\$2,505,977	66.3%	\$3,479,442	\$2,162,124	62.1%	-4.2%
Middlesex	\$7,080,888	\$5,103,158	72.1%	\$6,445,809	\$4,393,682	68.2%	-3.9%
Monmouth	\$6,628,412	\$4,975,875	75.1%	\$5,979,207	\$4,319,902	72.2%	-2.8%
Morris	\$4,077,840	\$3,058,179	75.0%	\$3,839,391	\$2,787,324	72.6%	-2.4%
Ocean	\$6,091,517	\$4,539,936	74.5%	\$5,635,018	\$3,986,024	70.7%	-3.8%
Passaic	\$6,100,676	\$4,044,558	66.3%	\$5,555,718	\$3,459,097	62.3%	-4.0%
Salem	\$1,054,933	\$655,682	62.2%	\$989,054	\$586,013	59.2%	-2.9%
Somerset	\$2,820,038	\$2,383,647	84.5%	\$2,520,752	\$2,048,429	81.3%	-3.3%
Sussex	\$1,654,743	\$1,294,323	78.2%	\$1,521,564	\$1,144,026	75.2%	-3.0%
Union	\$6,468,083	\$4,599,230	71.1%	\$6,095,319	\$4,095,138	67.2%	-3.9%
Warren	\$1,180,162	\$877,871	74.4%	\$1,068,860	\$793,925	74.3%	-0.1%
NJ TOTALS	\$97,025,766	\$68,234,047	70.3%	\$89,561,983	\$59,578,887	66.5%	-3.8%

SOURCE: NJKiDS (Based on Federal Performance Measures - OCSE-157)

TABLE 16:
OFFICE OF
CHILD SUPPORT
SERVICES

OFFICE OF CHILD SUPPORT SERVICES
STATE SUMMARY
TITLE IV-D CASES ARREARS COLLECTION REPORT

Comparison of April (FFY 2021 vs. FFY 2022)

	APRIL 2021			APRIL 2022			Increase or Decrease (-) from FFY 2021 to FFY 2022
County	Total Cases with Arrears	Total Amount Collected	Average Arrears Collection per Case	Total Cases with Arrears	Total Amount Collected	Average Arrears Collection per Case	
Atlantic	6,505	\$1,071,879	\$164.78	6,255	\$1,078,299	\$172.39	\$7.61
Bergen	6,707	\$1,355,120	\$202.05	6,480	\$1,361,802	\$210.15	\$8.11
Burlington	7,270	\$1,441,560	\$198.29	6,975	\$1,448,733	\$207.70	\$9.41
Camden	15,467	\$2,627,031	\$169.85	14,330	\$2,641,531	\$184.34	\$14.49
Cape May	1,767	\$337,187	\$190.82	1,684	\$339,062	\$201.34	\$10.52
Cumberland	6,831	\$1,105,824	\$161.88	6,263	\$1,112,249	\$177.59	\$15.71
Essex	20,421	\$3,903,512	\$191.15	18,740	\$3,922,443	\$209.31	\$18.16
Gloucester	6,072	\$996,410	\$164.10	5,683	\$1,002,257	\$176.36	\$12.26
Hudson	10,935	\$1,887,682	\$172.63	10,403	\$1,898,258	\$182.47	\$9.84
Hunterdon	742	\$196,576	\$264.93	705	\$197,546	\$280.21	\$15.28
Mercer	7,526	\$1,369,464	\$181.96	6,873	\$1,376,519	\$200.28	\$18.31
Middlesex	9,694	\$1,941,964	\$200.33	9,137	\$1,951,301	\$213.56	\$13.23
Monmouth	7,587	\$1,443,202	\$190.22	6,809	\$1,450,201	\$212.98	\$22.76
Morris	3,381	\$706,215	\$208.88	3,263	\$709,687	\$217.50	\$8.62
Ocean	8,086	\$1,375,490	\$170.11	7,518	\$1,383,178	\$183.98	\$13.87
Passaic	10,540	\$1,895,812	\$179.87	9,648	\$1,905,640	\$197.52	\$17.65
Salem	2,295	\$360,685	\$157.16	2,089	\$362,931	\$173.73	\$16.57
Somerset	2,490	\$513,922	\$206.39	2,383	\$516,511	\$216.75	\$10.35
Sussex	1,522	\$289,347	\$190.11	1,442	\$290,979	\$201.79	\$11.68
Union	10,238	\$1,933,634	\$188.87	9,794	\$1,943,617	\$198.45	\$9.58
Warren	1,586	\$260,638	\$164.34	1,449	\$262,251	\$180.99	\$16.65
NJ TOTALS	147,662	\$27,013,154	\$182.94	137,923	\$27,154,996	\$196.89	\$13.95

SOURCE: OCSE-157 Child Support Enforcement Annual Data Report

Table 17

WORK FIRST NEW JERSEY STATISTICAL SUMMARY

WFNJ

APRIL 2022

COUNTY	EMPLOYMENT DIRECTED ACTIVITIES			EMPLOYED OPEN (WFNJ RECIPIENT)	SUPPORT SERVICES ON ACTIVE CASE		CLOSED FOR EMPLOYMENT THIS MONTH	POST ASSISTANCE CHILD CARE
	CWEP	ALL OTHER TRAINING	JOB SEARCH		CHILD CARE	TRAINING REL. EXPENSES		
ATLANTIC	0	83	27	39	2	54	3	28
BERGEN	2	1	0	7	15	0	2	4
BURLINGTON	82	34	132	20	10	1	3	9
CAMDEN	35	126	20	36	38	1	6	19
CAPE MAY	0	4	16	3	0	1	0	5
CUMBERLAND	0	30	26	13	2	31	7	2
ESSEX	56	167	11	51	51	53	10	46
GLOUCESTER	0	7	0	11	8	0	4	1
HUDSON	4	261	15	74	91	26	19	15
HUNTERDON	0	0	0	0	2	0	0	0
MERCER	10	227	6	42	101	20	13	27
MIDDLESEX	0	43	31	24	9	0	8	12
MONMOUTH	0	16	3	16	24	4	2	16
MORRIS	0	2	0	1	2	0	1	1
OCEAN	0	196	0	9	16	1	0	12
PASSAIC	0	17	0	21	26	5	8	8
SALEM	0	11	1	4	3	0	2	0
SOMERSET	5	18	7	19	14	19	3	4
SUSSEX	0	0	2	0	0	0	0	0
UNION	0	48	0	5	9	0	5	1
WARREN	0	4	0	7	6	0	0	2
STATE TOTAL	194	1,295	297	402	429	216	96	212

Data is derived from NJ Division of Family Development's FAMIS Reports RM064-01 & RM703-51, AdHoc Reports 5549 & 5598 and SDW Report WR00022WZ_CC

DIVISION OF FAMILY DEVELOPMENT CURRENT PROGRAM STATISTICS
APRIL 2022

ACRONYMS

EMERGENCY ASSISTANCE (EA) - Payments to those eligible for WFNJ/TANF or WFNJ/GA, authorized during the 30 consecutive days immediately following the emergency (defined as a substantial loss of shelter, food, clothing, or household furnishings by fire, flood or other similar disaster) or if eligible individual or family is in an imminent or actual state of homelessness.

NJ SNAP - Formerly the Food Stamp Program, now known as NJ SNAP (NJ Supplemental Nutrition Assistance Program) authorized by Congress as a nutritional supplement program to provide low income households with more food of greater variety and better nutrition. Program eligibility is based on household income, resources, and expenses for medical, shelter, and dependent care. CWA staff refers certain recipients to the New Jersey Department of Labor for participation in the Food Stamp Employment

FAMIS: Family Assistance Management Information System

GAAS: General Assistance Automated System

NJKIDS: New Jersey Kids Deserve Support (Child Support Information Management System)

NJ MMIS SHARED DATA WAREHOUSE: The Shared Data Warehouse (SDW) is the repository for New Jersey's DFD and Medicaid data. Since 2003, OptumInsight has administered the SDW and provided access to the data through a reporting tool known as Business Objects.

OMEGA: Online Management of Economic Goal Achievement

SSI-EA: Supplemental Security Income-Emergency Assistance

WFNJ: Work First New Jersey - Fully implemented July 1, 1997, this is New Jersey's welfare reform program which responds to the requirements of the Federal Personal Responsibility and Work Opportunity Reconciliation Act (**PRWORA**) of 1996. PRWORA established Temporary Assistance for Needy Families (**TANF**) as the replacement for AFDC cash assistance. WFNJ includes two segments, **WFNJ/TANF** for families with children, and **WFNJ/GA** (General Assistance) for single adults and couples without dependent children. WFNJ emphasizes achieving self-sufficiency and limits lifetime receipt of financial assistance to a total of five years.

**DIVISION OF FAMILY DEVELOPMENT CURRENT PROGRAM STATISTICS
APRIL 2022**

EXPLANATORY NOTES

The Department of Human Services Division of Family Development provides basic income and an opportunity to achieve self-sufficiency for individuals and families served by the Division's programs. The Division provides leadership, direction and supervision to those public agencies responsible for administering those programs and plans for and develops policies to promote self-sufficiency.

WFNJ STATISTICAL SUMMARY (TABLE 17)

Employment Directed Activities (EDA) - From Activities Summary Report (OMEGA report # RM064). Unduplicated count of persons participating in Community Work Experience Program (CWEP), All Other Training, or Job Search.

Number of Persons Employed This Month, Still Receiving TANF - Individuals with open "empl" activity on OMEGA. Ad hoc report.

Participants Receiving Child Care Services - From Issuance Disbursement Summary (OMEGA report # RM703). Total number of active participants who show receipt of Child Care.

Number of Persons Closed on FAMIS Due to Employment - From FAMIS report #5549-RM-2

Post TANF and Receiving Child Care - Persons no longer in receipt of TANF but still receiving child care. From Share Data Warehouse Child Care case count based on Child Care payments (SDW report WR00022WZ_CC).