



USDA,
National Agricultural Statistics Service,
New Jersey Field Office
P.O. Box 330
Trenton, NJ 08625
Phone: 1(800)328-0179
Fax: 1(800)625-7581
www.nass.usda.gov/nj/

New Jersey's FARM FACTS

"Fact Finders for Agriculture"

Volume: 06 Number: 10

Date: October 20, 2006

NEW JERSEY CENSUS OF AQUACULTURE

The 2005 count was the second nationwide aquaculture census conducted by the U.S. Department of Agriculture's National Agricultural Statistics Service (NASS). The first took place in 1998. Aquaculture sales in New Jersey decreased 36 percent, to \$3.714 million. New Jersey's number of aquaculture farms tripled to 87 in 2005, compared to 28 in 1998. Census results show that mollusks – including clams, mussels, and oysters – accounted for 76 percent of all aquaculture sales in 2005. Ornamental fish, such as koi and tropical fish, accounted for approximately 9 percent of sales.

The 2005 Census of Aquaculture collected detailed information on issues including production methods, water sources, sales, distribution, and farm labor. For the purpose of the census, an aquaculture farm was any commercial or non-commercial place from which \$1,000 or more of aquaculture products were raised and sold, or distributed for restoration, conservation or recreational purposes during the census year.

Geographic area	Farms	Sales (\$1,000)
Connecticut	30	12,902
Delaware	3	1,870
Maine	50	25,580
Maryland	86	7,292
Massachusetts	157	9,342
New Hampshire	10	1,054
New Jersey	87	3,714
New York	54	8,913
Pennsylvania	56	8,951
Rhode Island	12	840
Vermont	9	80



Class	Farms		Value of Products Sold	
	2005	1998	2005	1998
All Aquaculture Products	87	28 ¹	3,714,000	5,787,000 ¹
Mollusks	67	16	2,820,000	3,134,000
Ornamental Fish	9	8	335,000	(D)
Food Fish ²	6	8 ³	(D)	(D)
Baitfish	4	1	16,000	(D)
Crustaceans	4	2	(D)	(D)
Sport Fish ²	3	2	3,000	(D)
Miscellaneous Aquaculture	1	2 ⁴	(D)	(D)

(D) Withheld to avoid disclosing data for individual farms.

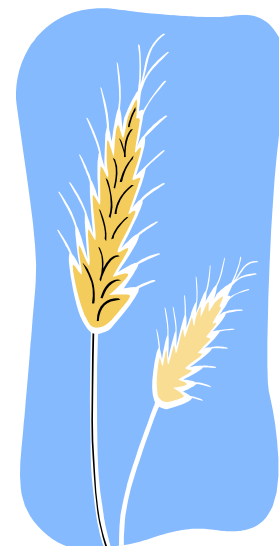
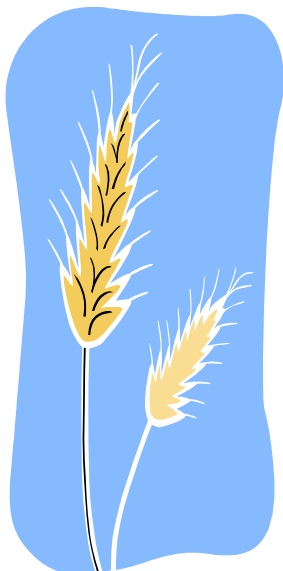
1. Data include algae and sea vegetables. The types of aquaculture products sold do not add to total sales because the category "Other Fish", used in 1998, was not a valid category in 2005.
2. Data for walleye classified as food fish in 1998 and as sport fish in 2005.
3. Data exclude fish eggs.
4. Data include algae, sea vegetables, and fish eggs.

New Jersey Barley and Wheat Summary

- Barley production for New Jersey totaled 114,000 bushels, down 20 percent from 2005. New Jersey's barley yield is 57 bushels per acre, compared to 71 bushels in 2005. The Garden State record yield, 79 bushels per acre, was set in 1999. Area seeded in barley was unchanged from the previous year at 3,000 acres. Barley acreage harvested for grain was 2,000 acres, unchanged from previous year. The state record low level of barley harvested for grain is 1,000 acres, set in 1936.
- All wheat production for the Garden State totaled 1.32 million bushels, up 8 percent from the previous year. Spring weather conditions promoted a good growing season for wheat. New Jersey's acres seeded to all wheat totaled 25,000 acres, down 3,000 acres from last year. Wheat acres harvested for grain totaled 22,000 acres, compared to 23,000 acres the previous year. All wheat yield per acre was 60 bushels per acre, compared to 53 bushels the previous year, a 7 bushel increase. This tied New Jersey's record wheat yield set in 1997.

Barley and Wheat Acreage, Yield, and Production

Crop	Acres Planted		Acres Harvested		Yield per Acre		Production	
	2005	2006	2005	2006	2005	2006	2005	2006
New Jersey	<i>- Thousand -</i>		<i>- Thousand -</i>		<i>- Bushels -</i>		<i>- Thousand Bushels-</i>	
Barley	3	3	2	2	71.0	57.0	142	114
All Wheat	28	25	23	22	53.0	60.0	1,219	1,320
United States	<i>- Thousand -</i>		<i>- Thousand -</i>		<i>- Bushels -</i>		<i>- Million Bushels-</i>	
Barley	3,875	3,452	3,269	2,951	64.8	61.0	211.9	180.1
All Wheat	57,229	57,344	50,119	46,810	42.0	38.7	2,104.7	1,812.0



New Jersey's Soybean Production Up 1 Percent from the October 1 Forecast

Note: Yield forecasts in this report are based on conditions around October 1 and do not reflect changes in conditions since that time.

- **Corn** production is forecast at 8.49 million bushels, an increase of 3 percent from the September 1, 2006, forecast. Expected yield per harvested acre is 137 bushels per acre, up 15 bushels from the previous year. The state record yield is 143 bushels per acre, set in 2004. The 10-year (1996-2005) state average yield is 104.8 bushels per acre. Area harvested for grain, at 62,000 acres, is unchanged from 2005.
- **Soybean** production is set at 2.87 million bushels, up 1 percent from the September 1, 2006, forecast. The October 1, 2006, soybean yield is forecast at 33 bushels per acre, up 2 bushels from the previous month's forecast. The state record yield per acre is 42 bushels, set in 2004. The 10-year average (1996-2005) is 31.9 bushels per acre. Harvested acreage is revised to 87,000 acres, down 5,000 acres from last month, based on administrative information.

Acres, Yield, and Production of Corn and Soybeans

Crop	Acres for Harvest			Yield per Acre			Production		
	Final 2005	Sept 1 2006 Forecast	Oct 1 2006 Forecast	Final 2005	Sept 1 2006 Forecast	Oct 1 2006 Forecast	Final 2005	Sept 1 2006 Forecast	Oct 1 2006 Forecast
NEW JERSEY	- Thousand Acres -			- Bushels -			- Thousand Bushels -		
Corn for grain	62	62	62	122.0	133.0	137.0	7,564.0	8,246.0	8,494.0
Soybeans	91	92	87	28.0	31.0	33.0	2,548.0	2,852.0	2,871.0
UNITED STATES	- Thousand Acres -			- Bushels -			- Million Bushels -		
Corn for grain	75,107	71,841	71,047	147.9	154.7	153.5	11,112.1	11,113.8	10,905.2
Soybeans	71,251	73,935	74,505	43.0	41.8	42.8	3,063.2	3,093.0	3,188.6

Note: The next crop production forecast will be released November 9, 2006.



Selected Fresh Market Vegetables: Area Harvested, Fall Season, 2004-2005 and Forecasted Area 2006

Crop and State	Usual Harvest Period	Area		
		Harvested		For Harvest 2006
		2004	2005	
Cabbage				
Florida	Oct-Dec	500	1,000	1,000
Georgia	Oct-Dec	4,800	4,800	4,900
New Jersey	Sept-Nov	500	500	600
Texas	Sept-Nov	200	200	300
Total		6,000	6,500	6,800
Snap Beans				
Florida	Oct-Dec	9,800	10,000	9,500
Georgia	Oct-Dec	5,000	5,100	4,700
New Jersey	Sept-Oct	1,600	1,300	1,500
Virginia	Sept-Oct	1,600	1,800	1,800
Total		18,000	18,200	17,500

Cabbage: The New Jersey growers expect to harvest 600 acres, up 100 acres from last year. Growers reported some plant losses due to heavy rains in mid-September. However, growing conditions are currently favorable. United States fresh market area for harvest is forecast at 6,800 acres, up 5 percent from last year and 13 percent above 2004. Georgia received rainfall during September which helped benefit the crop. In Florida, during August and September, scattered showers delayed some planting over the central and southern Peninsula. However, most of the crop is reported to be on schedule. Warm temperatures boosted crop growth and development. Texas conditions have been good for fall vegetables due to cool nights and heavy irrigation.

Snap Beans: The New Jersey's area for fall harvest is forecast at 1,500 acres, 200 acres more than last year. Dry conditions in late August combined with frequent heavy rains during mid-September had an adverse impact on harvest and crop development. Growing conditions had improved by late September. United States fall fresh market area for harvest is forecast at 17,500 acres, down 4 percent from last year and 3 percent below 2004. In Florida, during August and September, scattered showers delayed planting over the central and southern Peninsula. However, crop progress was mostly on schedule. Warm weather boosted crop growth and development. In Georgia, rainfall during the last few weeks in September benefited the crop. A few pest problems were reported. In Virginia, timely rains throughout the growing season benefited the crop.



A special "**Thank You**" goes to New Jersey Farmers who have helped us by completing the **Census of Aquaculture, September Agricultural Survey, and Fresh Market Vegetable Survey.**

To obtain other agricultural statistics, visit the USDA, NASS, New Jersey Field Office at www.nass.usda.gov/nj/ or call 1-800-328-0179.