

FREE PUBLIC LIBRARY  
TRENTON NEW JERSEY

# New Jersey

10 Mar '62

# Outdoors



VOL. 12, NO. 8

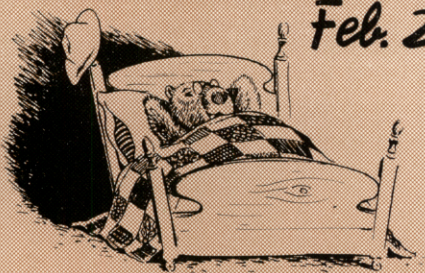
DIVISION OF FISH AND GAME

FEBRUARY, 1962

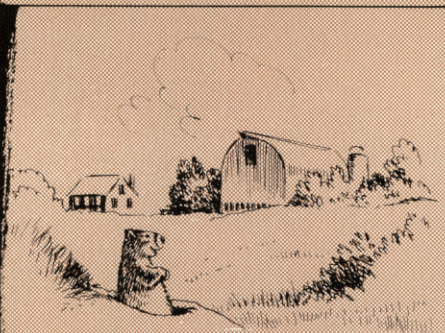


# Groundhog Day

Feb. 2



—THAT'S THE DAY I'M SUPPOSED TO POP OUT OF MY HOLE AND TAKE A LOOK AT THE WEATHER. FACT IS, FEBRUARY 2 IS USUALLY TOO COLD FOR SUCH FOOLISHNESS. IF YOU WANT THE REAL LOWDOWN ON US GROUNDHOGS (WOODCHUCKS, SOME FOLKS CALL US) HAVE A LOOK AT THE REST OF THIS PAGE.



WE'RE FAR MORE PLENTIFUL NOW THAN WHEN THE FIRST WHITE MAN ARRIVED IN AMERICA—THANKS TO THE TASTY CLOVER, TIMOTHY ALFALFA, AND WILD PLANTS THAT GROW ON MODERN FARMS.



OUR BURROWS CONSIST OF FROM 6 TO 30 FEET OF TUNNELS. THE "FRONT PORCH" IS A CONSPICUOUS MOUND OF EARTH, BUT WE HAVE OTHER CONCEALED EXITS FOR EMERGENCY USE.



WHEN OUR 2 TO 8 YOUNG LADS ARE BORN IN THE SPRING THEY ARE BLIND, HELPLESS, AND WEIGH LITTLE MORE THAN AN OUNCE. THEY RARELY VENTURE FROM THE BURROW UNTIL ABOUT SIX WEEKS OF AGE.



WE ARE TRUE HIBERNATORS, SPENDING THE COLD MONTHS IN A TORPID STATE FROM WHICH WE ARE NOT EASILY AROUSED. OUR BREATHING BECOMES ALMOST IMPERCEPTIBLE AND OUR BODY TEMPERATURE COMMONLY DROPS INTO THE FORTIES.



FOXES, WEASELS, MINK, DOGS, LARGE HAWKS AND OWLS ARE NOT ABOVE MAKING A MEAL OF US, ESPECIALLY OUR YOUNG. MAN, OF COURSE, IS OUR CHIEF PREDATOR.



OUR EXCAVATIONS PLAY AN IMPORTANT ROLE IN WILDLIFE CONSERVATION. MANY SMALL ANIMALS USE THEM TO ESCAPE FROM PREDATORS, HUNTERS, AND FOLL WEATHER, AND OUR ABANDONED HOMES SOON BECOME THE PERMANENT ABODES OF SKUNKS, OPOSSUMS, AND THE LIKE.

NEB GRITH

# STATE OF NEW JERSEY

RICHARD J. HUGHES  
Governor

## DEPARTMENT OF CONSERVATION AND ECONOMIC DEVELOPMENT

H. MAT ADAMS  
Commissioner

### DIVISION OF FISH AND GAME

A. HEATON UNDERHILL  
Director

#### FISH AND GAME COUNCIL

EARL L. McCORMICK,  
Chairman, Bridgeton

LAWRENCE BOHM, Eldora

FRED H. TOTTEN,  
Ringoes

HARRY FROME, Blaiirstown

DAVID H. HART,  
Cape May

HENRY J. KELLY, Cranford

WILLIAM C. LUNSFORD, Jr.  
Wildwood Crest

GEORGE H. McCLOSKEY  
Flanders

RALPH T. McNEEL,  
Hackettstown

CLARENCE A. SHEPPARD,  
Pittstown

#### LAW ENFORCEMENT

WILLIAM P. COFFIN,  
Chief Conservation Officer

JOSEPH K. MATHIS,  
District Conservation  
Officer—Marine

#### WILDLIFE MANAGEMENT

L. G. MacNAMARA,  
Chief of the Bureau

OSCAR SUSSMAN, D.V.M.,  
Veterinary Consultant

#### FISHERIES MANAGEMENT

ROBERT A. HAYFORD,  
Chief of the Bureau

#### PUBLIC RELATIONS

JULES W. MARRON, Sr.,  
Supervisor



Published monthly by the State of New Jersey Division of Fish and Game  
in the interest of conservation and restoration of wildlife and  
the betterment of hunting and fishing in New Jersey.

### IN THIS ISSUE

	PAGE
Ecological Succession . . . . .	George N. Alpaugh 3
Pollution . . . . .	Juanita Mahaffey 11
Beaver . . . . .	18
Council Highlights . . . . .	23
Fur, Fin and Campfire . . . . .	Jack Sheridan 25
Hooking Suckers . . . . .	Gross and Grosch 26
Jersey Joe . . . . .	Bob Cypher 30
Violators Roundup . . . . .	31

#### Cover—BEAVER—Bob Hines

Although native beaver were virtually exterminated in New Jersey by 1820, introduced beaver, or their descendants, and their lodges are familiar sights in almost every wild, and sometimes not so wild, section of the state.

Editor: Bob Adams

Vol. 12, No. 8, February, 1962

Publication Office: DIVISION OF FISH AND GAME,  
230 West State Street, Trenton 25, New Jersey

Second class postage paid at Trenton, N. J., and additional mailing office.

Subscription: \$1.00 a year, by check or money order, payable to Division of Fish and Game. Cash is forwarded at sender's risk. No stamps, please.

Change of Address: Should be reported directly to the Editor. Send both old and new address. The Post Office will not forward copies unless forwarding postage is provided by subscriber. Copies not delivered through failure to send change of address six weeks in advance cannot be replaced.

Comments, news items, letters, photographs, sketches, and articles are gratefully received. All unsolicited material is sent at the sender's risk.

Permission granted to reprint with credit to NEW JERSEY OUTDOORS.





*from plowed field to forest*

# Ecological Succession

By GEORGE N. ALPAUGH, *Assistant Chief*, Bureau of Wildlife Management

*Photographs by* HARRY GROSCH

**I**T HAS BEEN SAID that the people of a town determine the fate of the community, and in turn, the community influences the life of each individual living therein. A similar kind of reciprocal relationship exists between plants and animals.

In the October 1960 issue of *New Jersey Outdoors*, we pointed

out that, among other things, the rabbit populations fluctuate according to the change in the habitat. We explained, that to increase a rabbit population on any unit of land, it would be necessary to improve the habitat for the species by correct management. It would be nice indeed if every condition under which the community lived

### . . . Ecological Succession

stayed the same on our "optimum" rabbit habitat. But alas, as time goes on the community *does grow* and *does change*. The laws of Ecological Succession that govern plant and animal groups determine the composition of the community.

To illustrate this strange phenomenon of nature, let us imagine that a large tract of land (2,000 acres) in Hunterdon County (could

would take her course. The following sequence of events would probably take place on the land.

During the fall and winter months, there would be very few wild birds, small mammals, or insects on this newly plowed land. Perhaps a sparrow or a starling would find a few old seeds to feed upon, a mouse or a mole possibly would be observed. The mouse could subsist on the overturned vegetation underneath the furrows



*Plowed land would be desolate and without suitable habitat*

be any county) were plowed in the fall and immediately afterward, man's activities were completely stopped. Now "Mother Nature"

where it would be living. The mole would live on the earth worms, grubs, and other animal life that it could find. This area would then

in reality be a desolate and deserted tract of land without suitable habitat for game species.

After a spring rain and a few nice warm days, it will be but a

for space above the ground and for space and food below the ground.

During the first growing season we could expect to find the following plants establishing them-



*The area is soon covered with a growth of herbaceous plants*

short time before the plowed area is covered again with a protective growth of weeds, grasses, and other herbaceous material. This is Nature's first step toward protecting the soil and rebuilding a permanent form of vegetation. From the very beginning of this plant community, there will be competition

selves: plantain, crabgrass, ragweed, sheepsorrel, dandelion, and a few native grasses.

Over some of the area we would find a few tree seedlings of birch, sassafras, red maple, ash, and other light seeded species.

Wildlife will begin to move into the area as the plants begin to

### . . . Ecological Succession

grow. First, we will notice a small number of song and insectivorous birds eating the ever-increasing number of insects that are present.

begin to crowd out the animals. Sod will begin to form rather quickly, preventing the weed seeds from germinating.

There will be an increase in wild-life over the first year. The habitat



*Weed plants will be displaced by berry plants and shrubs*

The cottontail rabbit will begin to use the edges of the plowed area, as will the pheasants. The mouse population will be on the increase, and as a result of this increase, we can be sure that the red and gray foxes will appear on the area. Probably a deer will be interested in feeding on the new weed growth.

At the end of the second season, the native grasses such as brome grass, blue grass, and fescue grass,

for the rabbit and the pheasant will be much improved. They will begin to nest in the area.

It is during the third year of plant succession that our small game species benefit most. We will see the peak of the weed plants; gradually they will disappear, being taken over by goldenrod, daisy, dewberry, raspberry, blackberry, and strawberry. The sod will remain and we will begin to notice

more shrubs, vines, and tree seedlings, all of which will be added food and cover for wildlife.

Because the food and cover for wildlife is at its best during these early stages of plant succession, game managers try to keep as much as possible of their managed area in this stage.

During the next 5 to 10 years, depending on many factors, we begin to gain a more intricate knowledge of the interrelationship of all living things. It is the seed-

elderberry, and spicebush, are taking their place in the plant community and are providing more food and cover for wildlife.

All of the land surface is not level, consequently there will be depressions. Each one of these depressions will be wet to some degree; therefore there will be a different local plant and animal community. At first we will notice the grasses and the sedges followed by smartweeds, algae, and other marsh and aquatic plants. Need-



*Before the forest canopy closes shrubs grow at their best*

ling stage of our forest, the time before the canopy closes. During this interval the shrubs are growing at their best. The dogwoods, huckleberry, viburnums, hawthorne, blueberry, hazelnut, sumac,

less to say the wildlife species will change as the swampy areas develop.

Now it can be seen that on this one tract, the succession is diverse with several types of vegetation

## . . . *Ecological Succession*

present. These different types form an "edge effect" and are very important to wildlife.

Ruffed grouse, pheasants, and mourning doves, are among the most important game birds using the upland areas, while woodcock, snipe, and a few waterfowl will be using the wetlands.

Deer, rabbit, woodchuck, skunk, fox, raccoon, chipmunk, and mice are finding year around habitat to their liking. Wildlife is most productive at this stage.

The next few years is the period of rapid height growth in our young forest. We will see the red maple, tulip poplar, cedar, poplar, walnut, oak, locust, elm, cherry, box elder, beech, and ash struggle for their place in the forest. When the crowns of these trees come together, they will form shade underneath. When this happens some of the shrubs and even some of the trees will become weak and die.

We will begin to see a decrease in most of our wildlife. There will be fewer rabbits and pheasants, grouse may continue to be abundant, as will deer. Squirrels and woodpeckers will be on the increase. Most of the song and insectivorous birds will be less numerous and declining. In their place we will be seeing ovenbirds, orioles, thrushes, bluejays, towhees, and maybe a hawk or an owl.

The period of rapid diameter increase is the greatest vigor in the life of the tree. Seed production is great. The crowns of the trees be-



come thicker and the ground beneath the trees is shaded more.

Because of these conditions, in most cases, there is less food and cover for most wildlife. The deer population will have reached its peak and will now decline as most of the understory will be shaded out. The grouse will remain in numbers. The deer mice will replace the field mice.

The period of declining vigor in the forest is nearing the mature stage in the life of the trees. As the crowns flatten out they become thinner and allow some light to reach the floor of the forest. Grass, weeds, and berries begin to come in. Seedlings will spring up beneath the trees. It is on these seedlings that the future life of the forest depends. When the old parent trees die and fall to the ground or are harvested, these young seedlings, which have been nourished and protected beneath their crowns, spring up and take their places, filling in the space left in the canopy.

The process of plant and animal succession takes a long time; probably several centuries are required to complete a rotation.

Time and space will not permit us to discuss in detail the many other units that go into our plant community. We haven't mentioned the insects, disease, fungi, or the tiny organisms living in the soil. The plants and animals listed are only small examples to illustrate plant and animal succession. #

*Many stages of succession visible  
in one locality*



*The worst poacher in our midst*

## HELP YOURSELF

to better hunting and fishing

## BY FIGHTING

# POLLUTION

## *The Worst Poacher*

By JUANITA MAHAFFEY

Photographs by HARRY GROSCH

WHEN YOU buy your license to hunt or fish you become a shareholder in a mammoth operation costing, nationally, upwards of \$125 million a year. Thirty-five million men and women last year paid just short of \$100 million for these State licenses, exceeding all records on the fishing side of the ledger. Including license-exempt groups which most States, including New Jersey, have, there are 30 million fishermen and 20 million hunters in the United States, according to a recent Gallup poll.

Migratory waterfowl hunters paid another \$4.7 million in Federal duck stamp fees. In addition, the States received \$21 million from excise taxes on sporting arms and ammunition and fishing tackle as Federal aid in their wildlife and fisheries programs. In general, all these moneys are used to pay for better hunting and fishing.

Blackest villains on the law-abiding sportsmen's list have been the poachers—the out-of-season killers or the culprits who exceed legal bag limits. For years they have been the contemptible object of fiery jabs by sports writers, conservation cartoonists, and lecturers. The first game laws were established to put the unethical game hogs out of business.

It's anybody's guess how much our country's wildlife diminished solely because of uncontrolled killing. Even the much deplored overhunting of buffalo only hastened what a changing environment would have accomplished eventually. Game and fisheries management today is based on maintenance of a healthy natural environment for the species.

### **The Worst Poacher**

In this light there is now a poacher in our midst whose destruction of fish and wildlife far outstrips that of the early-day market gunner or fish dynamiter. Pollution is destroying or retard-

---

JUANITA MAHAFFEY is with the Division of Water Supply and Pollution Control, Bureau of State Services, Public Health Service, U. S. Department of Health, Education and Welfare. Washington 25, D. C.

## . . . Pollution

ing fish and wildlife in quantities approaching those maintained by the \$125 million invested by hunters and fishermen.

### **Loss Exceeds Gain**

Past Commissioner Suomela of the U. S. Fish and Wildlife Service put it this way:

"Pollution of the rivers of the United States continues to be one of the most critical problems affecting the production of game and food fishes. Moreover, with the rapidly growing human population attended by intensification of agriculture and industry, the utilization of streams for various purposes—including removal of waste materials—will continue to be a problem of greatest importance.

"Although complete statistics are not available, it is considered that the amount of fish and wildlife habitat rendered unproductive each year

is greater than that created by public agencies carrying out programs of fish and wildlife restoration. Indeed, it appears that the effect of pollution in depressing production and use by valuable fish and wildlife would be to nullify much of the inland fishery and wildlife conservation effort when this is viewed on the national scale.

"Pollution may affect fish and wildlife adversely in a direct way or it may make environments untenable through harmful effects on food organisms, plant cover or other physical features present. In addition, the recreational enjoyment of fish and wildlife resources may be seriously impaired or eliminated in polluted situations."

### **Conservation Measures**

Most conservation measures developed, unfortunately, like "locking the barn door after the horse was stolen." The tragic dustbowl years of the early 1930's frightened a Nation into soil-saving

*Pollution makes environments untenable for fish and game*



action. At the same time North America's wild duck populations dived to a perilously low figure before breeding-ground restoration was inaugurated. U. S. timber lands were ruthlessly cut and burned over before selective harvest, fire prevention, and replanting combined to save our forests.

### **Water and Pollution**

But we still abuse and waste a most vital resource, water. Experiments with cloud seeding, salt water conversion, and evaporation control seek to increase available supplies of usable water. Yet we are alarmingly tardy in full implementation of the most economically feasible method to ensure water supplies — treating our wastes to control pollution. As a result, and as Mr. Suomela indicates, our fish and wildlife are drastically reduced, with an accompanying shrinkage of hunting and fishing areas. With these sports increasing in popularity and occupying prominent places in the over-all recreation needs of a growing population, can we afford lax attitudes toward this waster, pollution?

### **Treatment Needs**

The Public Health Service points out that the country as a whole is 30 years behind with sewage and industrial waste treatment construction as related to existing needs. While progress is being made under the Federal Water Pollution Control Act (Public Law 660 passed by Congress in 1956), the needs continue to pyramid be-



*There are many troublesome contaminants in surface waters*

cause of new pollution created by the explosive population increase, an unprecedented farm-to-city movement of people, and mushrooming industrial expansion.

### **Nature Needs Help**

The task of collecting, treating, and disposing of both domestic sewage and industrial wastes is heavily overtaxing existing facilities. Nature's stream purification system no longer functions adequately. Yet a big segment of our population must depend upon surface streams for its water supply. Clearly nature needs an assist from man with the water resource similar to the help given with respect to soil, forests, and wildlife.

### **New Dangers**

Indeed, there are many troublesome contaminants in surface waters (and sometimes invading the underground waters), resulting from the manufacture and use of new products, most of them originating since World War II.

## . . . Pollution

Research is concentrating heavily upon detergents, plastics, insecticides, and various chemicals which do not respond to presently known sewage treatment processes. While danger to human health has not been pin-pointed, we cannot afford to ignore these persistent materials whose long-term consequences might prove serious as they build up in our waters.

### **Problem Nationwide**

No part of the country is without its pollution problems. Brines from both natural surface deposits and from oil field drillings often contaminate fresh waters. The Potomac flowing through our National Capital has been called one of our "most polluted, neglected, and least developed" streams.

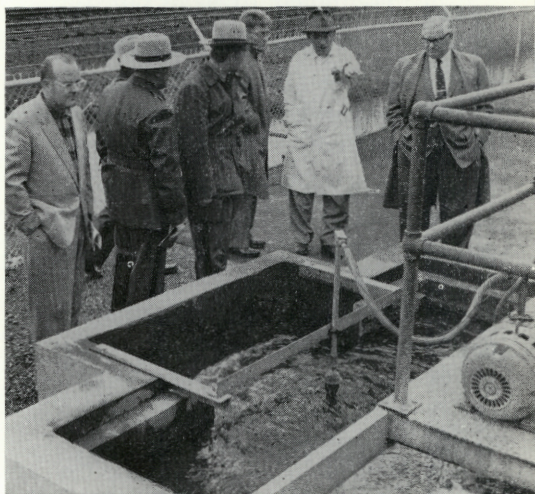
### **Marine Pollution**

Nor is pollution confined to fresh waters. One example of what pollution does to marine life was given not long ago by the director of the Oyster Institute of America: "From my knowledge of the industry in various coastal States, we estimate there are at least 100,000 acres of oyster grounds and clam beds which are not now being used because of pollution, a loss of probably \$15 million per year to the industry."

### **Multiple Consideration**

One advance in our water conservation approach is noteworthy. We have learned that all uses and users of water must be considered, whereas in former years pollution

was regarded almost wholly as a public health concern. The Federal Water Pollution Control Act specifies "the development of comprehensive programs with due regard given to improvements which are necessary to conserve waters for public water supplies, propagation



*Various chemicals do not respond to presently known sewage treatment processes*

of fish and aquatic life and wildlife, recreational purposes, and agricultural, industrial, and other legitimate uses."

### **The States**

Congress also expressed itself clearly in the Act "to recognize, preserve, and protect the primary responsibilities and rights of the States in preventing and controlling water pollution" and declared that "nothing in this Act shall be construed as impairing or in any manner affecting any right or jurisdiction of the States with respect to the waters (including boundary waters) of such States."

Since the enactment of Public Law 660 much has been done to encourage and assist the States in fighting pollution.

Research, a network of stream sampling stations, technical assistance, program grants, enforcement in cases of interstate stream pollution, and construction grants to cities for building sewage treatment plants—all are embraced in the Act. State appropriations for pollution control have increased an aggregate 44 percent as a result of the \$3 million annual program grants. Construction grants totaling \$265 million in past have resulted in some 1500 new sewage treatment plants completed or under construction. Cities have put up their own local funds in a ratio of better than four-to-one in receiving this Federal aid. Conferences and hearings involving eight major waterways, held under the interstate enforcement func-

tion of Public Law 660, have resulted in agreements for building remedial works to abate pollution that will cost over \$400 million.

### **Much To Be Done**

Despite these important gains, however, much higher levels must be reached if water pollution control is to be brought into balance with new pollution resulting from population growth and industrial expansion. To catch up by 1965, municipalities should spend about \$575 million per year. While needs in industry are not as completely indexed, the Public Health Service believes at least an equal expenditure for industrial waste treatment facilities will be required.

### **Planning**

No longer can we afford the type of pollution abatement which "locks the barn door after the horse is stolen." The problem calls for prevention rather than cure insofar as new pollution is con-

*No longer can we afford haphazard pollution abatement*



## . . . Pollution

cerned. States seeking new industry, for example, should make sure the incoming industry guarantees to maintain water quality before operating permits are issued. Interagency planning between State health departments, conservation departments, water resources boards, and industrial relations boards can strengthen the State vanguard against polluted waters.

Pollution is an ugly, creeping menace which often does not make itself immediately evident. Biological changes resulting from this invader in lake, stream, or estuary may be a long time developing. But once a stream or other surface water dies, an equally long time may be required to restore natural beauty and productivity, even after treatment gets under way. The waste treatment itself entails much preliminary planning, paper work, surveying and so forth.

The cost of complete sewage treatment in the average city is less than 25 cents per person per month, according to the Public Health Service. Yet there is often stout opposition to pollution control laws and programs. There are always some who seek the cheap but short-sighted way out, preferring to dump their wastes into the nearest river rather than pay the cost of treatment.

### Get in the Fight

You, the fisherman and hunter, invest \$125 million a year in fish and game. At the same time you sacrifice to pollution game bags and fish creels potentially much larger than your present field and stream "take home pay." Industrial heads and city, State, and Federal government leaders need citizen-backing to round out the job of pollution control. Get in the fight for clean waters and, at the same time, help yourself to better fishing and hunting! #

---

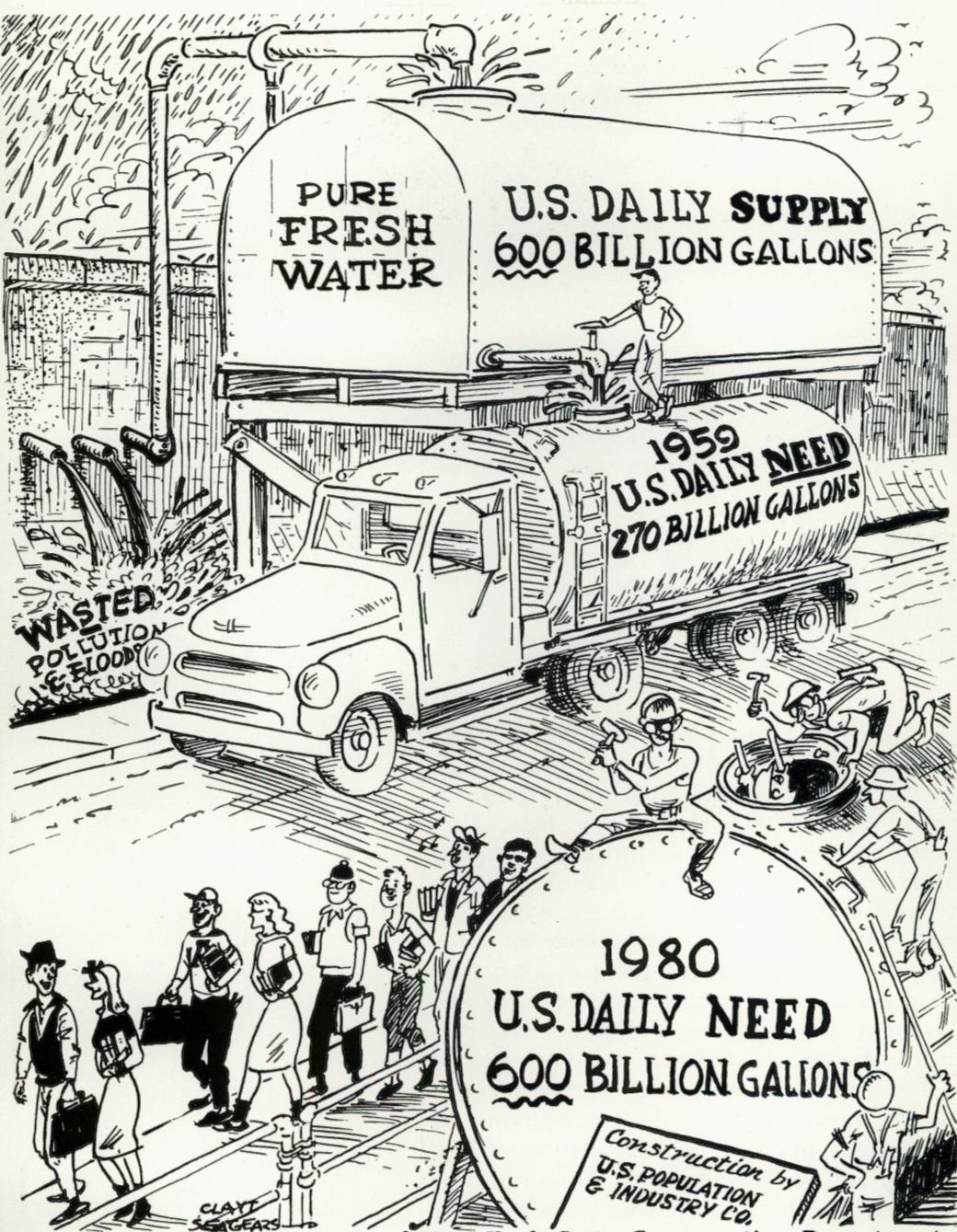
## *Pollution Survey Cooperation*

The Division of Fish and Game is cooperating with the U. S. Public Health Service by reporting the frequency and locations of fish killed by pollution in New Jersey. This is part of a nationwide survey.

Surgeon General Leroy E. Burney has requested the Division of Fish and Game to provide continuing reports of fish killed by pollution as these occur in the State's rivers, lakes and coastal waters. It marks the first time that a national tabulation of the number of fish kills has been undertaken.

Dr. Burney explained the project will be an effective means of obtaining additional basic information needed to determine the effects of pollution on the nation's water resources, as required by the federal Water Pollution Control Act.

The Public Health Service, a division of the U. S. Department of Health, Education and Welfare, will publish quarterly and annual reports of fish kills, listing numbers, locations, and causes, when known. These reports will be distributed to the cooperating agencies, organizations, and individuals who request them. #



Courtesy of New York State Conservation Department



# BEAVER

Legend, folklore, and fancy have given the beaver quite a reputation. Many of the almost unbelievable tales about the "engineers of the forest" are true. They certainly do fell trees, large and small. They build dams and houses and dig intricate networks of canals. But, beavers are poor woodsmen when it comes to determining the direction of the fall of a tree. (Some have even had their tails caught under the trees they felled.) And, contrary to general opinion, beavers do not use their tails as trowels in plastering mud on their dams. Nevertheless beavers do make a resounding "splat" with their tails on the surface of the water when alarmed—presumably to warn fellow beavers of the danger threatening.





... Beaver for the most part do good by building headwater reservoirs and are generally welcome guests. But, at times they can become nuisance animals if, for example, they build dams that cause flooding of roads or if they destroy valuable trees by cutting or drowning them. When the beaver do become too numerous or annoying, the Division usually employs either of two methods of control. Periodically an open season for beaver trapping may be set. (During this February 100 permits at \$5.00 each are being issued on a first-come-first-served basis. The season limit is five beaver. All counties are open.) Under certain conditions Division wildlife control representatives live-trap the beaver, as shown in these pictures, and move them to areas with suitable beaver habitat but low beaver populations.







. . . Beaver transplanted to new areas usually take to their new homes quickly and do quite well. The aesthetic return is the primary recognized value of beaver in New Jersey. #



# COUNCIL HIGHLIGHTS

## DECEMBER MEETING

The open session of the regular monthly meeting of the Fish and Game Council was held in Trenton on December 19. In addition to the Council, Director, and Staff those present included the following persons: Nelson Benedict, Henry Schaefer, William Backus, John Russack, and Roy Williams.

### Fluke Studies

Paul Hamer, senior fisheries biologist, appeared before the Council to report on fluke studies conducted by personnel at the Marine Laboratory. He presented charts and maps illustrating facts contained in his report.

Mr. Hamer recommended that coordinated studies be continued since the biologists cannot recommend any measures at the present time. He does feel that the situation is not critical at present but bears continued watching and study.

### Firearms Deer Bag

Director Underhill reported that the total kill of bucks during the 1961 firearms season was 4,188, as of the morning of this meeting. However, complete returns had not been received at the time. The total for the 1960 six-day buck season was 5,136. (Final total for the 1961 season is 5,251.)

### Small Game on December 20

The Director reported that in view of the Superior Court's decision to reverse the Council's decision to establish a one-day hunter's choice season on December 20, 1961, he had taken up with the Attorney General the matter of allowing the hunting of in-season small game on that date. The Attorney General ruled that the Division can open the small game season on that date and that in his opinion this was the intent of the Council. It was closed only because the plan was for the special season to be held.

Councilman Kelly moved that the Council sanction the Attorney General's ruling to the effect that this was the intent of the Council. This was seconded by Councilman Frome. The motion was carried.

This information was disseminated through the press and radio.

### Hunter's Choice Deer Season

The Director stated that the Attorney General definitely felt that the decision of the Superior Court to reverse the Council code decision to hold a hunter's choice deer season on December 20, 1961, should be appealed to the State Supreme Court and the Chief Justice of the Supreme Court had given both sides an opportunity to file briefs during the week. The Attorney General opined that in order for this not to be a moot question, the date of the proposed season should be changed from

### . . . Council Highlights

December 20, 1961, to January 31, 1962, and the court would review it on that basis. The Director stressed that the date itself was not important. But in order for the court to review a question that is not moot, the date should be changed if that were the wish of the Council. The Director asked the Council members if they would consider passing a resolution that this decision be reviewed on that basis.

Director Underhill further stated that the Attorney General did not believe another public hearing would be needed. The Game Code provided for a statewide "any" deer season on December 20. It would be reviewed on the same basis as previously established only changing the date to January 31, 1962.

Chairman McCormick stated that he would entertain a motion as requested by the Attorney General, who would like this Council to take whatever steps are necessary to reset the date from December 20, 1961, to January 31, 1962.

Councilman Kelly moved "That the New Jersey Fish and Game Council request the Attorney General to seek a certification of the judgment of the Appellate Division of the Superior Court in order to secure a review and affirmance by the Supreme Court of the regulation for a statewide 'hunters' choice' deer season adopted November 20, 1961, as amended to change the date of the statewide 'hunters' choice' deer season from December 20, 1961, to January 31, 1962." This motion was seconded by Councilman Bohm. Roll call vote on the motion follows:

#### **Favored**

Councilman Bohm  
Councilman Kelly  
Councilman Frome  
Councilman Lunsford  
Councilman Hart

#### **Opposed**

Chairman McCormick  
Councilman McCloskey  
Councilman McNeel  
Councilman Sheppard

(A hearing on the "hunters' choice" deer season for January 31, was held in the Assembly Chamber of the State House in Trenton on January 19. The proposal was approved by the Council and the hunters' choice deer season was held January 31.) #

---

Please give your CORRECT POST OFFICE ADDRESS

for change of address, new subscriptions, and renewals.

If your post office address is different than your municipal address, please make certain that you send us your post office address.

---

# Fur, Fin <sup>and</sup> Campfire

---

By JACK SHERIDAN

## THE BEAVER



IT'S THE LARGEST RODENT AND IS THE TRAPPER'S PRIDE AND JOY WITH PELTS BRINGING AS MUCH AS \$20. AN AQUATIC, GNAWING ANIMAL; ABOUT FOUR FEET LONG, MUCH OF IT TAIL, IT WEIGHS BETWEEN 35 AND 100 POUNDS.



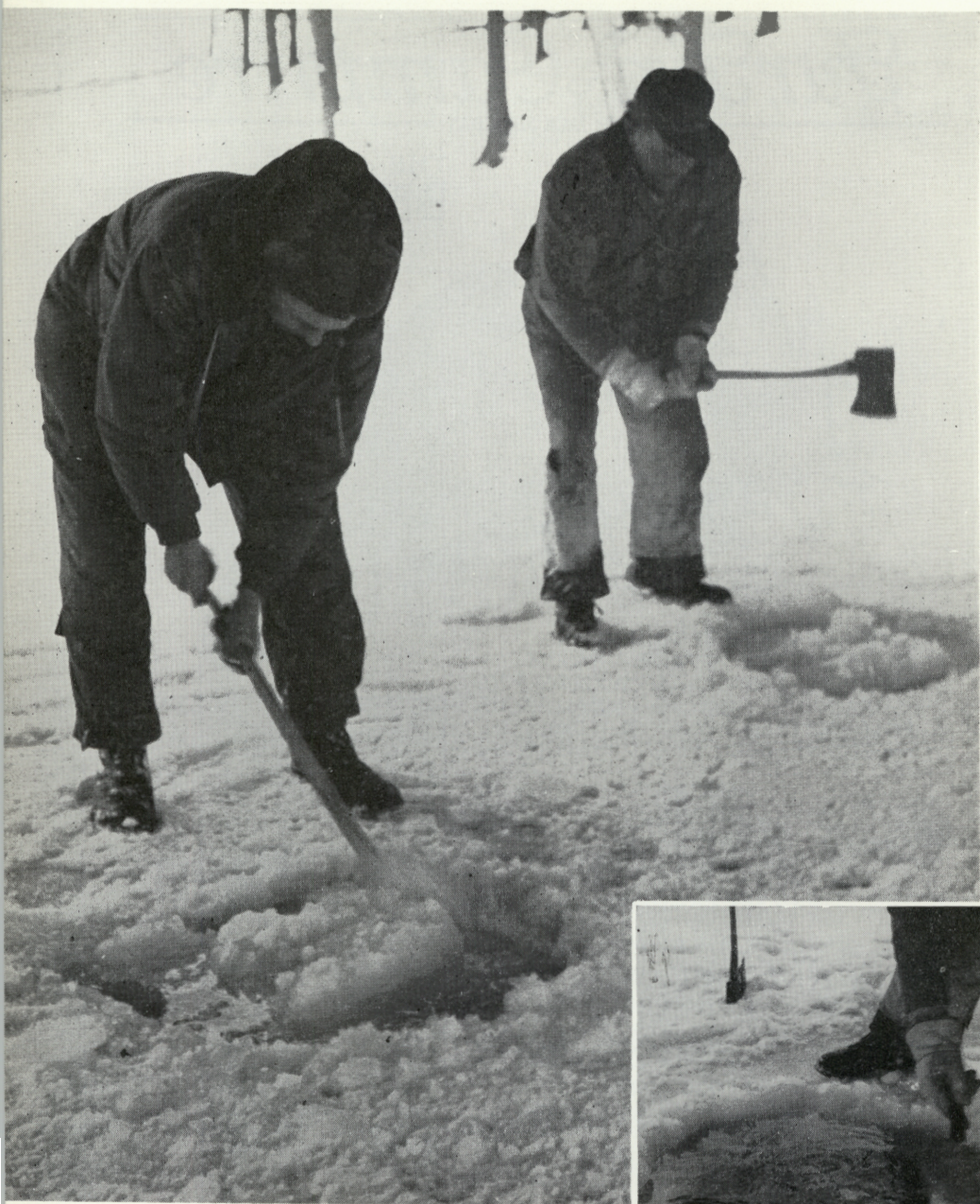
THEY STORE UP FOOD FOR WINTER BELOW ICE LEVEL, STAY IN THEIR "HOME" MOST OF THE TIME EXCEPT TO COME OUT AND CUT FRESH FOOD.



THE BEAVER HAT, MARK OF THE WELL-DRESSED MAN, MAKES UP PART OF "UNCLE SAM'S" WELL-KNOWN CHAPEAUX. IT'S NOW MADE OF SILK, NOT BEAVER.

---

The beaver trapping season, **by permit only**, is open statewide during the entire month of February. The limit is five beaver.



*Just as for any other ice-fishing—someone has to cut the holes. Get the skim ice out. Visibility has to be good to see the suckers*



# HOOKING SUCKERS

## *through the ice*

By RICHARD W. GROSCH and HARRY GROSCH

Each winter when the weather becomes cold enough for our large streams to freeze, a small but rugged group of fishermen becomes active. This group is interested in a lightly exploited sport—hooking suckers through the ice. The scenes here are on the Musconetcong River at Hackettstown, but could be the Flat Brook, Pequest, Paulinskill, or most any frozen New Jersey stream.

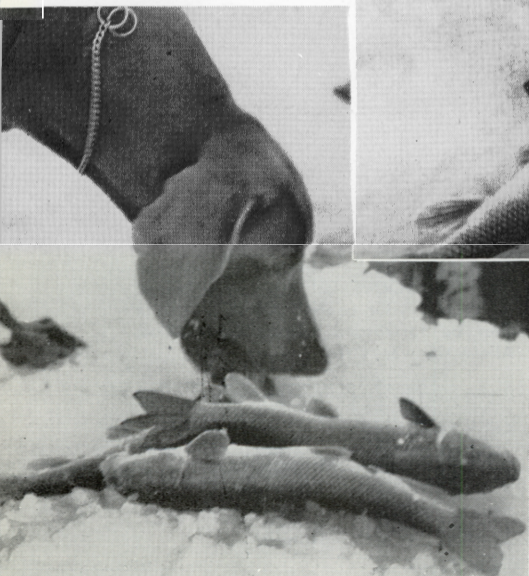
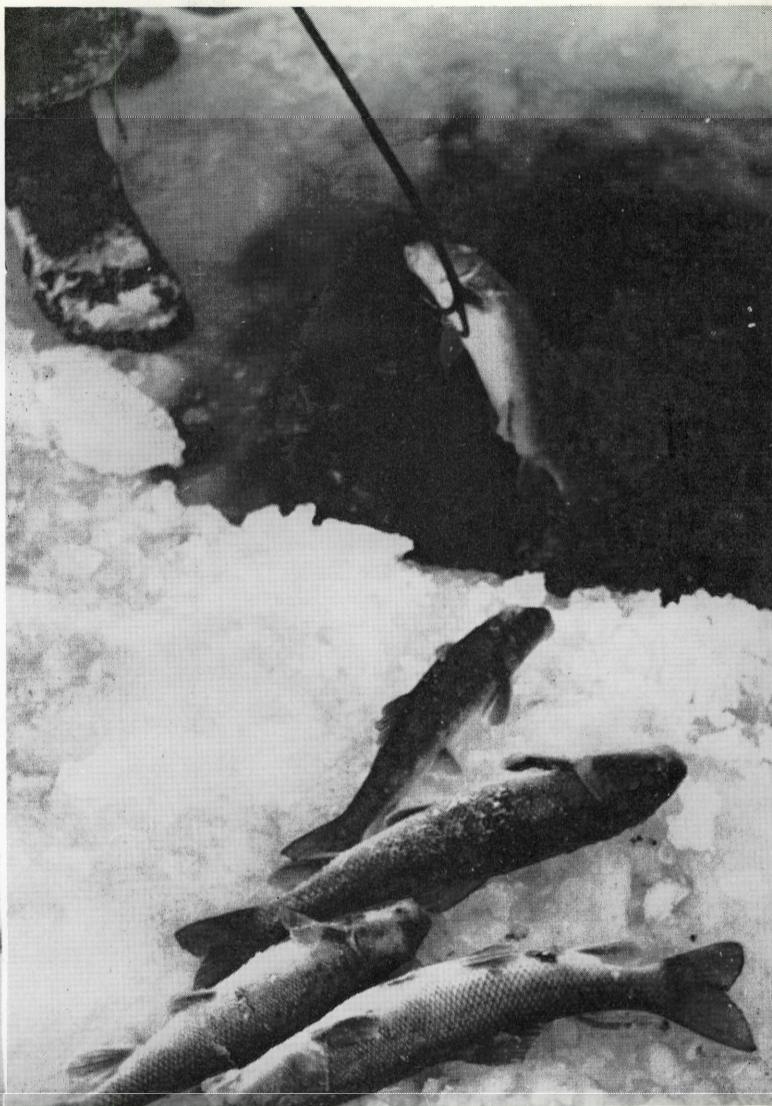
*Bill Cunningham (above) of Hackettstown demonstrates the type of hook used in this sport*



**. . . HOOKING SUCKERS *through the ice***

*Everybody ready! The drive starts. Fish are chased downstream  
by drivers who pound the ice*





*Some folks think that no fish tastes better  
than winter-caught suckers*

*Hey! Who needs a retriever?*

# Jersey Joe



## If You Are Changing Your Address

Please fill out this form and send it to NEW JERSEY OUTDOORS, 230 West State Street, Trenton 25, New Jersey, so that you will continue to receive your copies of the magazine without interruption. (NEW JERSEY OUTDOORS cannot be forwarded by the post office; therefore, we need your new address in advance. Allow six weeks for processing.)

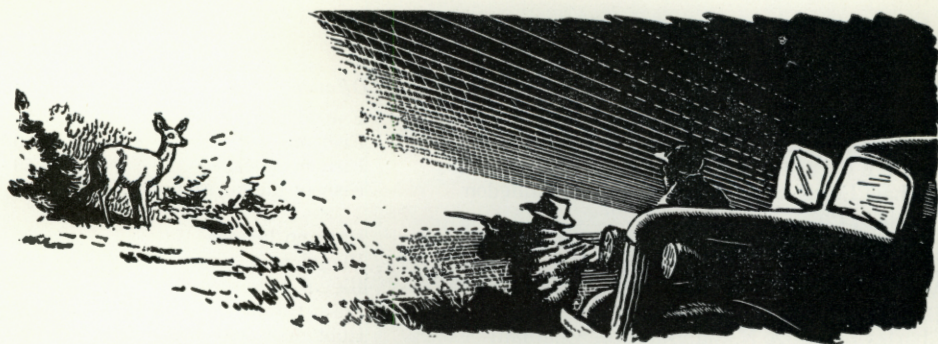
Name \_\_\_\_\_

OLD ADDRESS \_\_\_\_\_

Post Office \_\_\_\_\_ Zone \_\_\_\_\_ State \_\_\_\_\_

NEW ADDRESS \_\_\_\_\_

Post Office \_\_\_\_\_ Zone \_\_\_\_\_ State \_\_\_\_\_



## VIOLATORS ROUNDUP

OCTOBER 1961

<i>Defendant</i>	<i>Offense</i>	<i>Penalty</i>
Walter Tier, 109 Franklin Ave., N. Brunswick	Kill raccoon closed season	20
Philip H. Reising, 42-35 163rd St., Flushing, N. Y.	Fish no license	20
Geo. L. Reddick, Evergreen Pky, Glassboro	Poss. short striped bass	10
James Walker, 17 North St., Netcong	Worms in fly stretch	20
Union Steel Corp., Old N. Bruns. & No. Randolphville Rd., Piscataway Twp.	Pollution	500
Robt. Diletto, 717 Schiller Ave., Trenton	Illegal firearm	20
Robt. Diletto, 717 Schiller Ave., Trenton	Illegal poss. protected bird	20
Roger Schwab, 257 Lafayette Ave., Trenton	Fail to exhibit lic.	20
Andrew Doster, 512 Robinson Ave., Atlantic City	Ducks after hours	20
Gordon Schell, Jr., 412 N. Delavan Ave., Margate	Poss. rifle no permit	20
Robt. McGuckin, 312 Chanese Lane, Absecon	Poss. rifle no permit	20
Arthur Chudley, Box 73, Stillwater	Bait in fly stretch	20
John Feind, 49 Newnam Ave., Verona	Hunt no license	20
Philip Di Coasta, 94 New St., Hackensack	Fish no license	20
Elmer Cattlett, R.D. 4, Bridgeton	Loaded gun in auto	20
Elmer Cattlett, R.D. 4, Bridgeton	Hunt deer closed season	100
Elmer Cattlett, R.D. 4, Bridgeton	Hunt deer at night	100
Elmer Cattlett, R.D. 4, Bridgeton	Hunt aid of lights	20
Philip Johnson, 60 Monroe St., Bridgeton	Hunt deer at night	100
Philip Johnson, 60 Monroe St., Bridgeton	Loaded gun in auto	20
Philip Johnson, 60 Monroe St., Bridgeton	Hunt aid of lights	20
Philip Johnson, 60 Monroe St., Bridgeton	Hunt deer closed season	100
Andrew Wasowski, 143 Edison St., Clifton	Illegal poss. firearm	20
Louis Barkaszi, 937 Sofield Ave., Perth Amboy	Worms in fly stretch	20
Robt. Mohowski, 1 Geranium Pl., Wallington	Illegal poss. firearm	20
John Kmetz, 37 Feronia Way, Rutherford	Illegal poss. firearm	20
Patrick Clossy, 518 Willow Ave., Lyndhurst	Firearm on Sunday	20
John Clossy, 518 Willow Ave., Lyndhurst	Firearm on Sunday	20
John Kivi, 206 Union Ave., Rutherford	Firearm on Sunday	20
Allen G. Smith, 304 Beach St., Kearny	Firearm on Sunday	20
Donald Gandy, Delsea Dr., Dennisville	Hunt woodchuck closed season	20
Rocco DiPaolo, 39 6th Ave., Newark	Discharge firearm near dwelling	20
Allegheny Indust., Chem. Co., Main St., Butler	Pollution	500
Howard Manchester, High St., Oak Ridge	Hunt no license	20
Alfredo Medina, 221 Madison St., Hoboken	Fish no license	20
Robt. Killmer, Jr., Marshall Hill Rd., W. Milford	Fish no license	20
Wm. Johnson, Russell Mill Rd., Swedesboro	Fish no license	20
James A. Bumpers, 709 N. 17th St., Phila., Pa.	Fish no license	20
Edward Zigon, 320 Stockhom Ave., Morrisville, Pa.	Fish no license	20

## . . . Violators Roundup

<i>Defendant</i>	<i>Offense</i>	<i>Penalty</i>
Harry M. Bowker, Rt. 50, Corbin City	Fail to exhibit lic.	20
Joseph Dulaney, 32 William St., Belleville	Fish no license	20
Kenneth Carroll, 1796 Brenwood Dr., Browns Mills	Fish no license	20
Michael Lewis, 3121 Philmont Ave., Huntingdon Valley, Pa.	Fish in illegal manner	20
Francis Shultz, 42 Singley Ave., Runnemede	Hunt no license	20
Charles E. Bogart, S. 49 Burnside Ave., Trenton	Illegal poss. deer	100
Mathias J. Boltner, 81 Liberty St., Trenton	Illegal poss. deer	100
Cleveland Callaway, 1422 Baltic Ave., Atlantic City	Poss. rabbit closed season	20
Charles Hoiles, 20 N. Summit Ave., Chatham	Hunt deer with rifle	100
Charles Hoiles, 20 N. Summit Ave., Chatham	Hunt deer at night	100
Charles Hoiles, 20 N. Summit Ave., Chatham	Hunt deer closed season	100
Kurt Mueller, 18 Maple Avenue, Madison	Hunt deer with rifle	100
Kurt Mueller, 18 Maple Avenue, Madison	Hunt deer at night	100
Kurt Mueller, 18 Maple Avenue, Madison	Hunt deer closed season	100
Geo. Denton, N. J. Avenue, No. Brunswick	Raccoon closed season	20
Geo. Denton, N. J. Avenue, No. Brunswick	Poss. raccoon without license	50
Nettie Perkins, 92 7th Ave., Newark	Fish no license	20
Carmen Esposito, 5 Alma Ave., Madison	Kill pheasant closed season	20
Algie Dennis, 230 Drexel Ave., Atlantic City	Fish no license	20
Vito Sacco, 86 3rd Ave., Newark	Uncased firearm	100
Vito Sacco, 86 3rd Ave., Newark	Loaded gun in auto	20
John Knoblock, 14 E. Kupsch St., Sayreville	Poss. undersized bass	20
Hans Tischer 27 Phoeton Dr., Hamilton Square	Fish no license	20

## *Subscribe Now to* **NEW JERSEY *O u t d o o r s***

NEW JERSEY OUTDOORS, 230 W. State St., Trenton 25, N. J.

Please enter my subscription (at \$1.00 per year) for  1 year  2 years  
 **3 YEARS FOR \$2.50**  new  renewal

Name .....

Street .....

Post Office ..... Zone ..... State .....

Please send a gift subscription (at \$1.00 per year) for  1 year  2 years  
 **3 YEARS FOR \$2.50**  new  renewal

To:

Name .....

Street .....

Post Office ..... Zone ..... State .....

From: .....

CUT HERE



*As Injun Joe goes so go the sportsmen*

**NEW JERSEY OUTDOORS**

230 West State Street

**TRENTON 25, N. J.**

Form 3579 Requested

*Second class postage  
paid at Trenton, N. J.,  
and additional office.*



**TIPPER FLINTLOCK** says . . .

"If staying alive is your  
main ambition—  
empty out that ammunition!

Store your gun in a good,  
safe place—  
and remain a member of  
the human race!"

**the national rifle  
association** teaches  
shooting safety