

(5/29/2014) Stacey Roth - FW: Draft 2014 load forecast

From: "Caliguire, Tricia" <Tricia.Caliguire@bpu.state.nj.us>
To: "nancy.wittenberg@njpines.state.nj.us" <nancy.wittenberg@njpines.state.n...>
CC: "stacey.roth@njpines.state.nj.us" <stacey.roth@njpines.state.nj.us>
Date: 12/13/2013 12:00 PM
Subject: FW: Draft 2014 load forecast
Attachments: 20131205-draft-load-forecast-report.pdf

Here is the document you had asked about. I tried to get a "plain English" description from PJM, but they didn't have one. I did put a summary in the letter - [REDACTED]

Tricia Caliguire
Chief Counsel
New Jersey Board of Public Utilities
44 South Clinton Avenue
Trenton, New Jersey 08625
609-292-1482

CONFIDENTIALITY NOTICE: The information contained in this communication from the Office of the New Jersey Board of Public Utilities is privileged and confidential and is intended for the sole use of the persons or entities who are the addressees. If you are not an intended recipient of this e-mail, the dissemination, distribution, copying or use of the information it contains is strictly prohibited. If you have received this communication in error, please immediately contact the NJ Board of Public Utilities at (609) 292-1482 to arrange for the return of this information.

TERMS AND ABBREVIATIONS USED IN THIS REPORT

AE	Atlantic Electric zone (part of Pepco Holdings, Inc)
AEP	American Electric Power zone (incorporated 10/1/2004)
APP	Appalachian Power, sub-zone of AEP
APS	Allegheny Power zone (incorporated 4/1/2002)
ATSI	American Transmission Systems, Inc. zone (incorporated 6/1/2011)
Base Load	Average peak load on non-holiday weekdays with no heating or cooling load. Base load is insensitive to weather.
BGE	Baltimore Gas & Electric zone
CEI	Cleveland Electric Illuminating, sub-zone of ATSI
COMED	Commonwealth Edison zone (incorporated 5/1/2004)
Contractually Interruptible	Load Management from customers responding to direction from a control center
Cooling Load	The weather-sensitive portion of summer peak load
CSP	Columbus Southern Power, sub-zone of AEP
Direct Control	Load Management achieved directly by a signal from a control center
DAY	Dayton Power & Light zone (incorporated 10/1/2004)
DEOK	Duke Energy Ohio/Kentucky zone (incorporated 1/1/2012)
DLCO	Duquesne Lighting Company zone (incorporated 1/1/2005)
DOM	Dominion Virginia Power zone (incorporated 5/1/2005)
DPL	Delmarva Power & Light zone (part of Pepco Holdings, Inc)
EKPC	East Kentucky Power Cooperative (anticipated incorporation 6/1/2013)
FE-East	The combination of FirstEnergy's Jersey Central Power & Light, Metropolitan Edison, and Pennsylvania Electric zones (formerly GPU)
Heating Load	The weather-sensitive portion of winter peak load
INM	Indiana Michigan Power, sub-zone of AEP
JCPL	Jersey Central Power & Light zone
KP	Kentucky Power, sub-zone of AEP

METED	Metropolitan Edison zone
MP	Monongahela Power, sub-zone of APS
NERC	North American Electric Reliability Corporation
Net Energy	Net Energy for Load, measured as net generation of main generating units plus energy receipts minus energy deliveries
OEP	Ohio Edison, sub-zone of ATSI
OP	Ohio Power, sub-zone of AEP
PECO	PECO Energy zone
PED	Potomac Edison, sub-zone of APS
PEPCO	Potomac Electric Power zone (part of Pepco Holdings, Inc)
PL	PPL Electric Utilities, sub-zone of PLGroup
PLGroup/PLGRP	Pennsylvania Power & Light zone
PENLC	Pennsylvania Electric zone
PP	Pennsylvania Power, sub-zone of ATSI
PS	Public Service Electric & Gas zone
RECO	Rockland Electric (East) zone (incorporated 3/1/2002)
TOL	Toledo Edison, sub-zone of ATSI
UGI	UGI Utilities, sub-zone of PLGroup
Unrestricted Peak	Peak load prior to any reduction for load management, accelerated energy efficiency or voltage reduction.
WP	West Penn Power, sub-zone of APS
Zone	Areas within the PJM Control Area, as defined in the PJM Reliability Assurance Agreement

2014 PJM LOAD FORECAST REPORT

EXECUTIVE SUMMARY

- This report presents an independent load forecast prepared by PJM staff.
- The report includes long-term forecasts of peak loads, net energy, load management and energy efficiency for each PJM zone, region, locational deliverability area, and the total RTO.
- Included in the report is a second set of E-Tables (net energy), representing an alternate derivation of the forecast using trended RTO monthly load factors.
- All load models were estimated with historical data from January 1998 through August 2013. The models were simulated with weather data from years 1974 through 2012, generating 507 scenarios. The economic forecast used was Moody's Analytics' November 2013 release.
- Revisions to historical economic data and the addition of another year of load experience to the model have resulted in generally lower peak and energy forecasts in this year's report, compared to the same year in last year's report. See the Moody's Analytics summary report on economic assumptions on Page 4 for more detail on the economic data revisions and outlook.
- The forecasts of the following zones have been adjusted to account for large, unanticipated load changes (see Table B-9 for details):
 - AEP: the loss of an aluminum smelter decreases the summer peak by 370 MW in all years;
 - APS: rapid expansion of load to serve hydraulic fracturing facilities adds 80-120 MW to the summer peak;
 - BGE: an undisclosed project currently under construction adds 120-315 MW to the summer peak;
 - DOM: substantial on-going growth in data center construction adds 288-896 MW to the summer peak.
- The PJM RTO weather normalized summer peak for 2013 was 155,185 MW. The projection for the 2014 PJM RTO summer peak is 157,408 MW, an increase of 2,223 MW, or 1.4%, from the 2013 normalized peak.
- Summer peak load growth for the PJM RTO is projected to average 1.0% per year over the next 10 years, and 0.9% over the next 15 years. The PJM RTO summer peak is forecasted to be 173,860 MW in 2024, a 10-year increase of 16,452 MW, and

reaches 180,145 MW in 2029, a 15-year increase of 22,737 MW. Annualized 10-year growth rates for individual zones range from 0.4% to 1.8%.

- Winter peak load growth for PJM RTO is projected to average 0.9% per year over the next 10-year period, and 0.8% over the next 15-years. The PJM RTO winter peak load in 2023/24 is forecasted to be 144,497 MW, a 10-year increase of 12,778 MW, and reaches 148,423 MW in 2028/29, a 15-year increase of 16,704 MW. Annualized 10-year growth rates for individual zones range from 0.3% to 1.7%.
- Compared to the 2013 Load Report, the 2014 PJM RTO summer peak forecast shows the following changes for three years of interest:
 - The next delivery year – 2014 -1,309 MW (-0.8%)
 - The next RPM auction year – 2017 -2,771 MW (-1.7%)
 - The next RTEP study year – 2019 -3,450 MW (-2.0%)
- Assumptions for future Load Management (LM) have decreased from the 2013 Load Report (from approximately 14,600 MW to 12,400 MW). Energy Efficiency (EE) impacts have decreased from approximately 1,100 MW to 900MW. Assumptions for both LM and EE are based on Reliability Pricing Model (RPM) auction results.

NOTE:

Unless noted otherwise, all peak values are non-coincident, unrestricted peaks, which represent the peak load prior to reductions for load management or energy efficiency impacts.
All compound growth rates are calculated from the first year of the forecast.

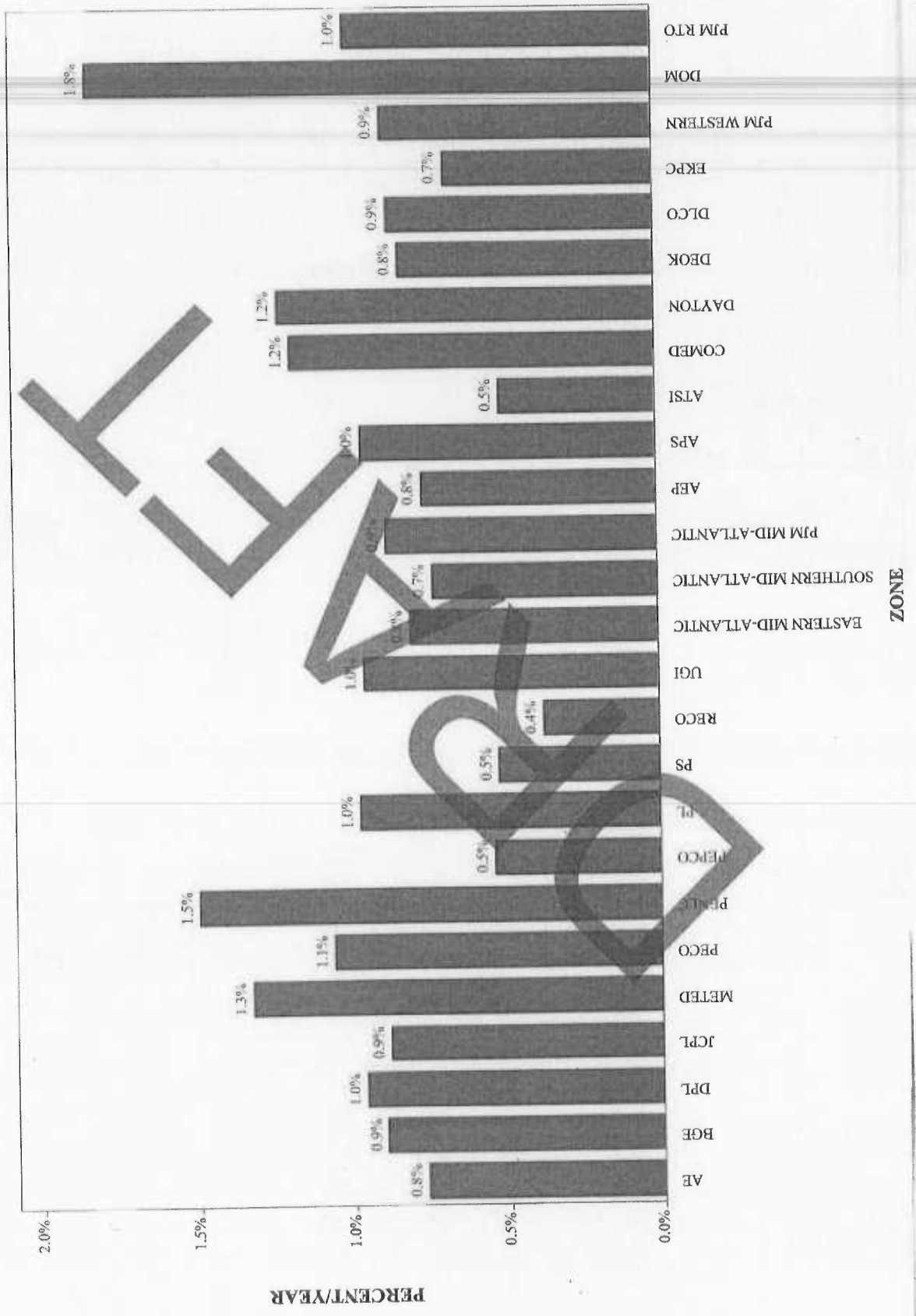
Summary Table

SUMMER PEAK LOAD (MW) AND GROWTH RATES FOR
PJM RTO AND SELECTED GEOGRAPHIC REGIONS

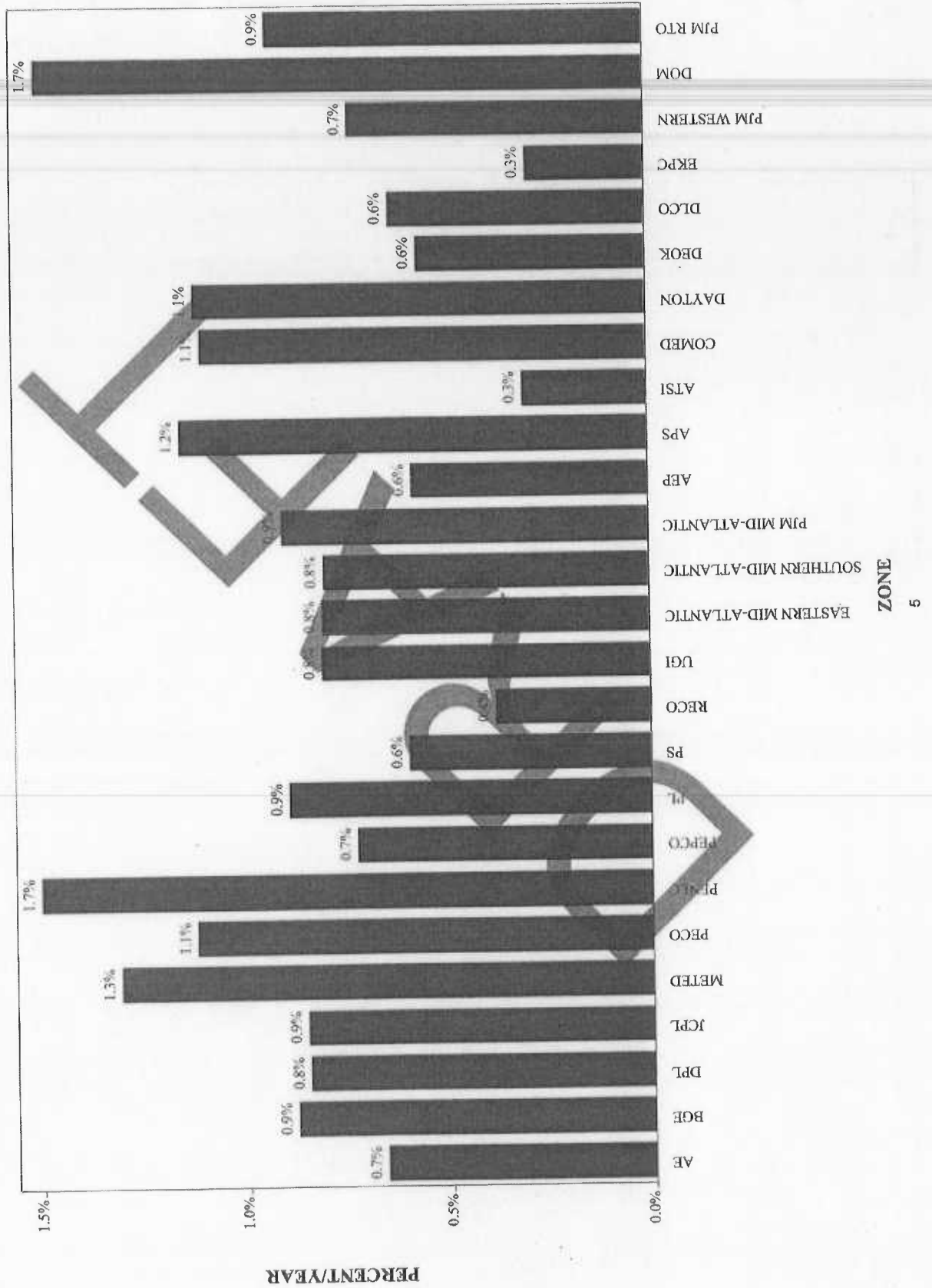
	METERED 2013	UNRESTRICTED 2013	NORMAL 2013	THIS YEAR 2014	FPM YEAR 2017	RTEP YEAR 2019
PJM RTO	157,141	159,369	155,185	157,408	164,440	167,071
Demand Resources + Energy Efficiency				1.4%		
PJM RTO - Restricted				-14,964	-13,320	-13,320
				142,444	151,120	153,751
PJM MID-ATLANTIC	59,119	59,580	59,505	60,451	62,875	63,821
Demand Resources + Energy Efficiency				1.6%		
MID-ATL - Restricted				-7,187	-5,378	-5,378
				53,264	57,497	58,443
EASTERN MID-ATLANTIC	32,519	32,581	32,550	32,941	34,165	34,599
Demand Resources + Energy Efficiency				1.2%		
EMAAC - Restricted				-2,837	-1,968	-1,968
				30,104	32,197	32,631
SOUTHERN MID-ATLANTIC	13,343	13,571	13,990	14,228	14,772	14,927
Demand Resources + Energy Efficiency				1.7%		
SWMAAC - Restricted				-2,256	-1,699	-1,699
				11,972	13,073	13,228

Note:
Normal 2013 and all forecast values are non-coincident as estimated by PJM staff.
Except as noted, all values reflect the membership of the PJM RTO as of June 1, 2013.

**PJM SUMMER PEAK LOAD GROWTH RATE
2014 - 2024**

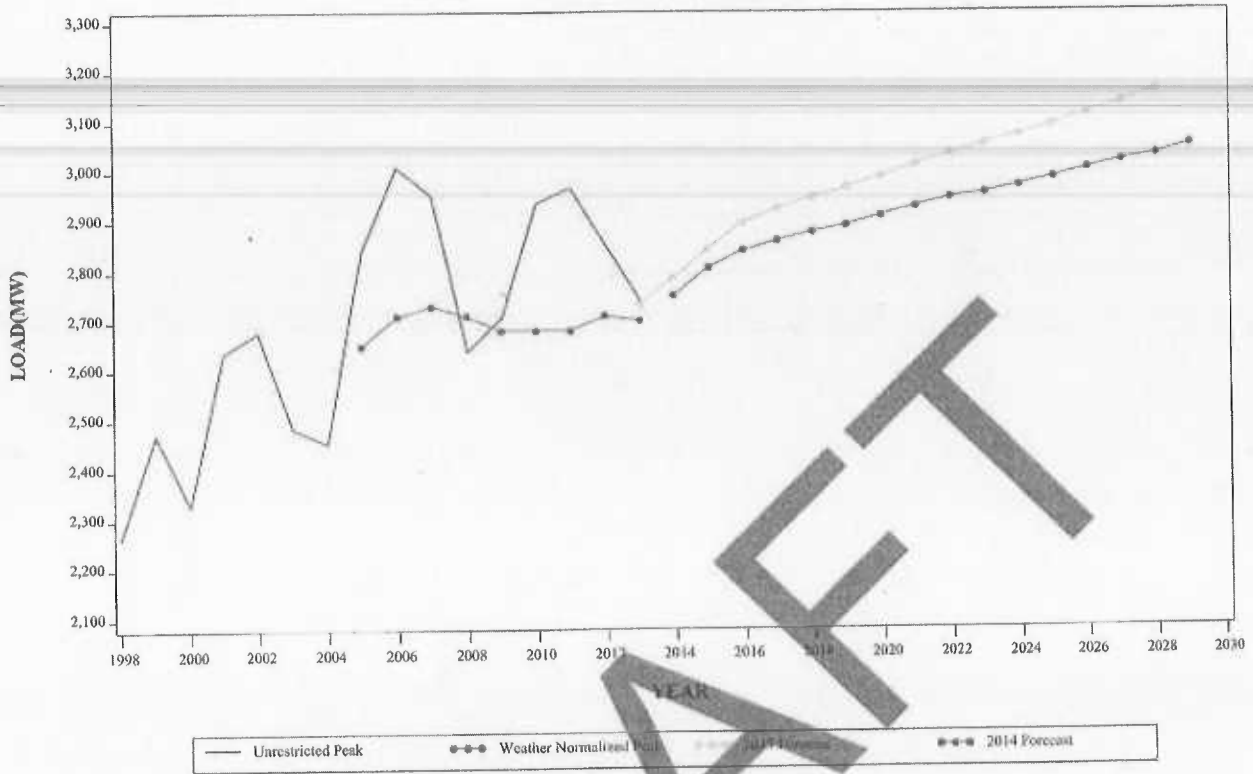


PJM WINTER PEAK LOAD GROWTH RATE
2014 - 2024

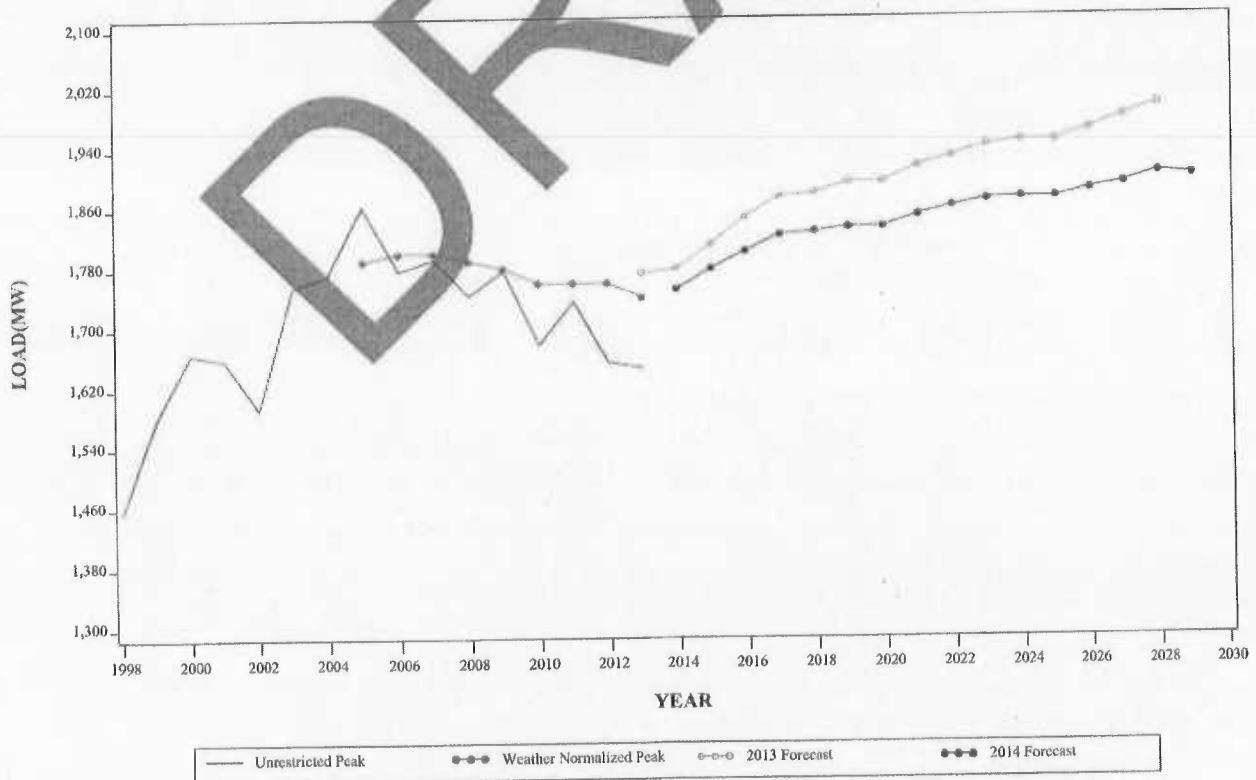


ZONE

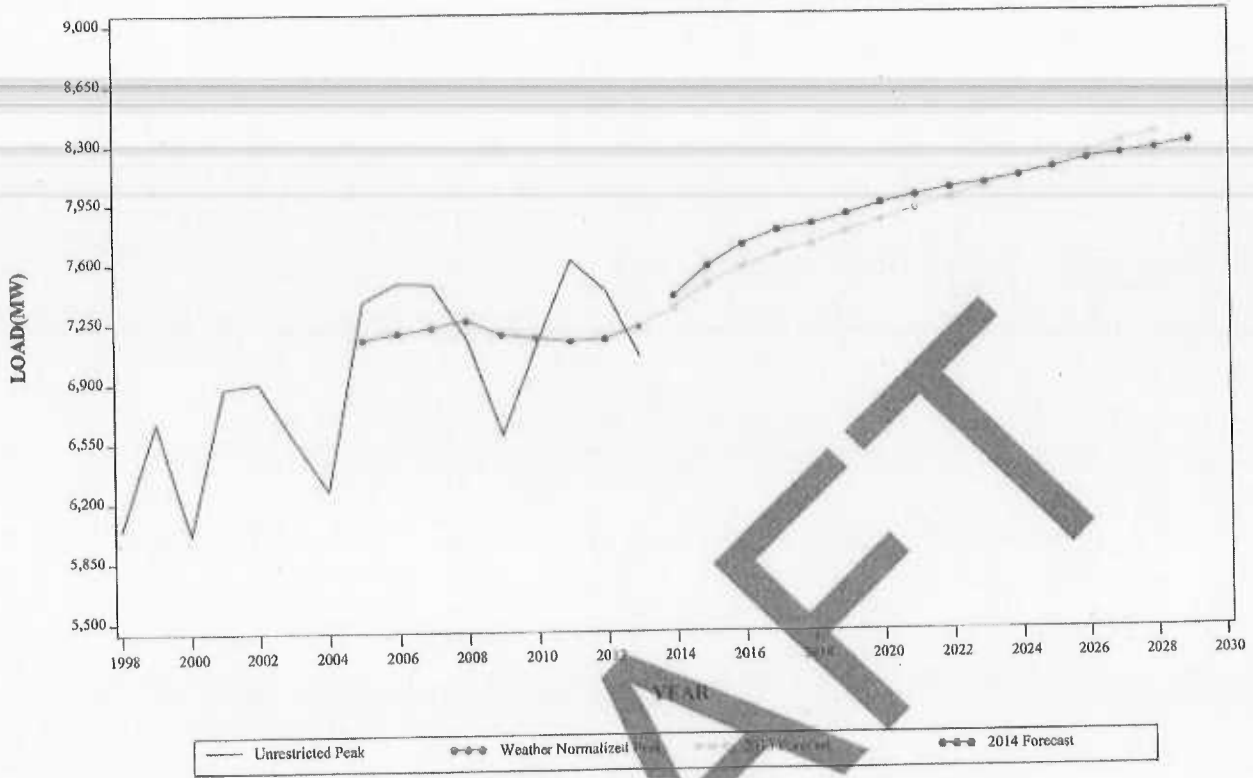
**SUMMER PEAK DEMAND FOR AE
GEOGRAPHIC ZONE**



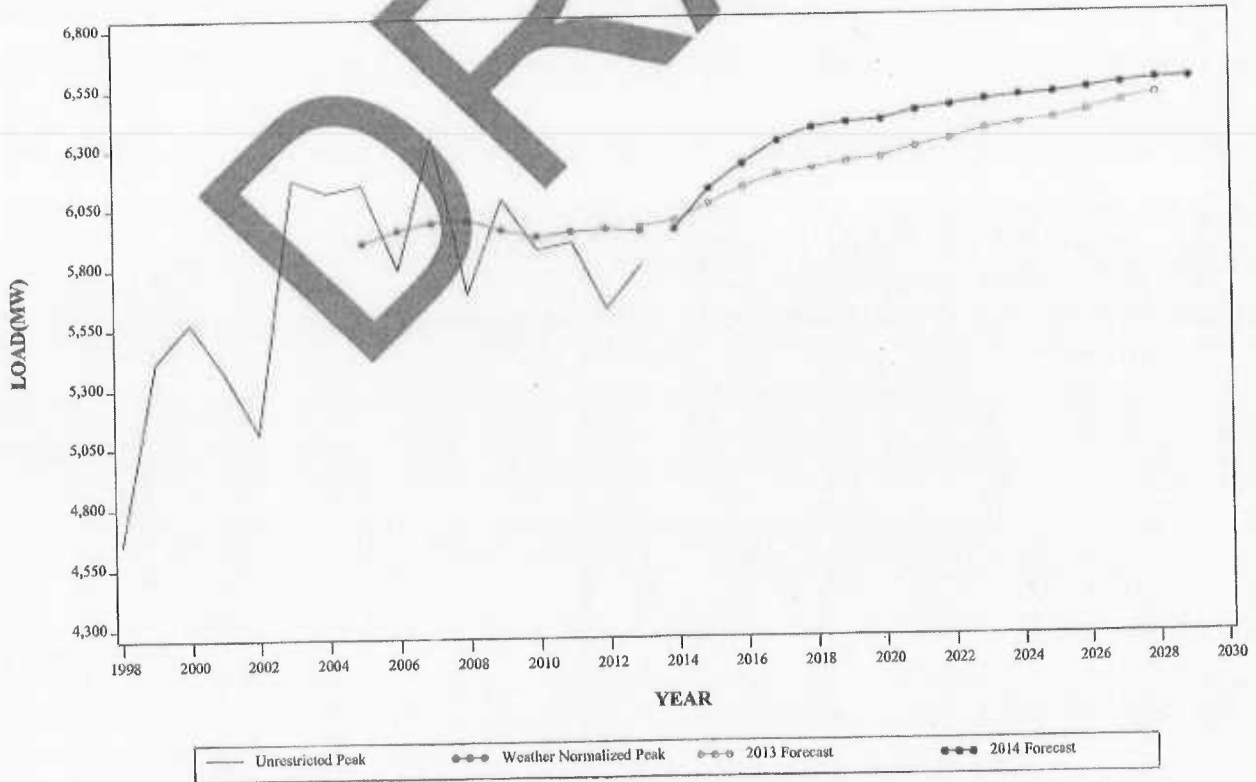
**WINTER PEAK DEMAND FOR AE
GEOGRAPHIC ZONE**



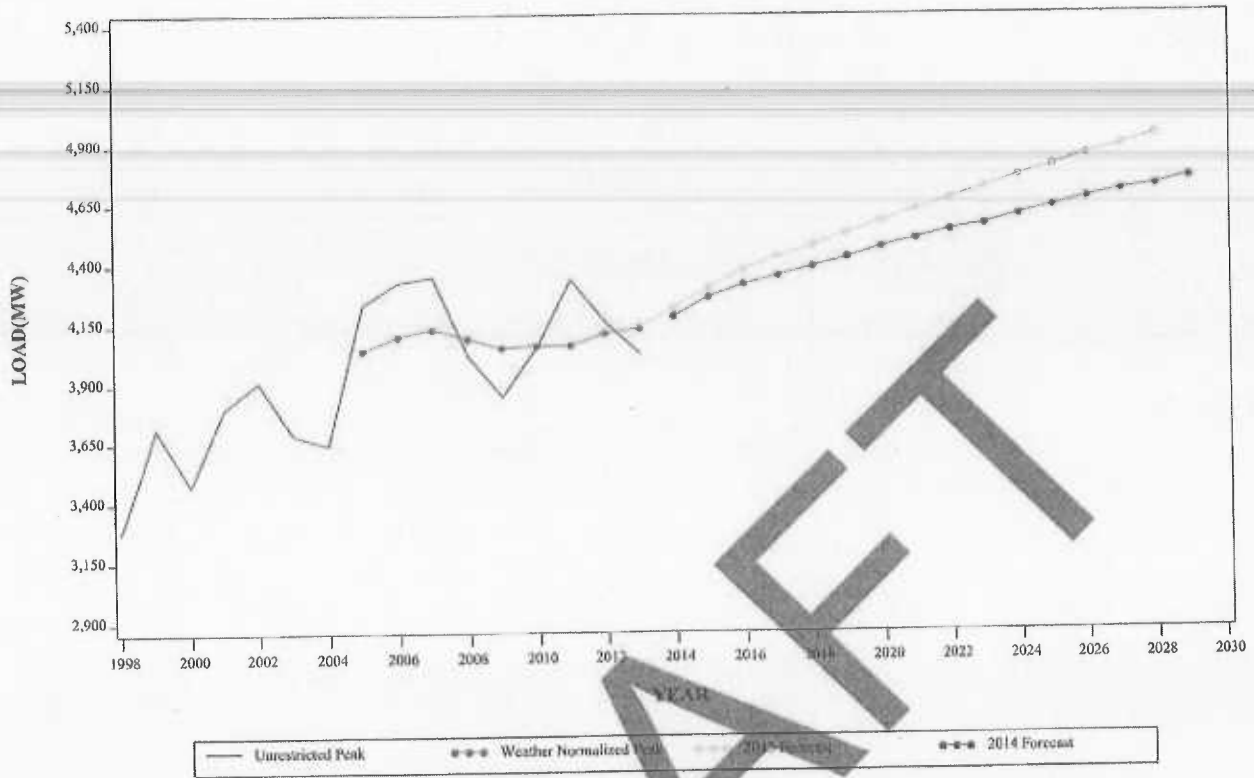
**SUMMER PEAK DEMAND FOR BGE
GEOGRAPHIC ZONE**



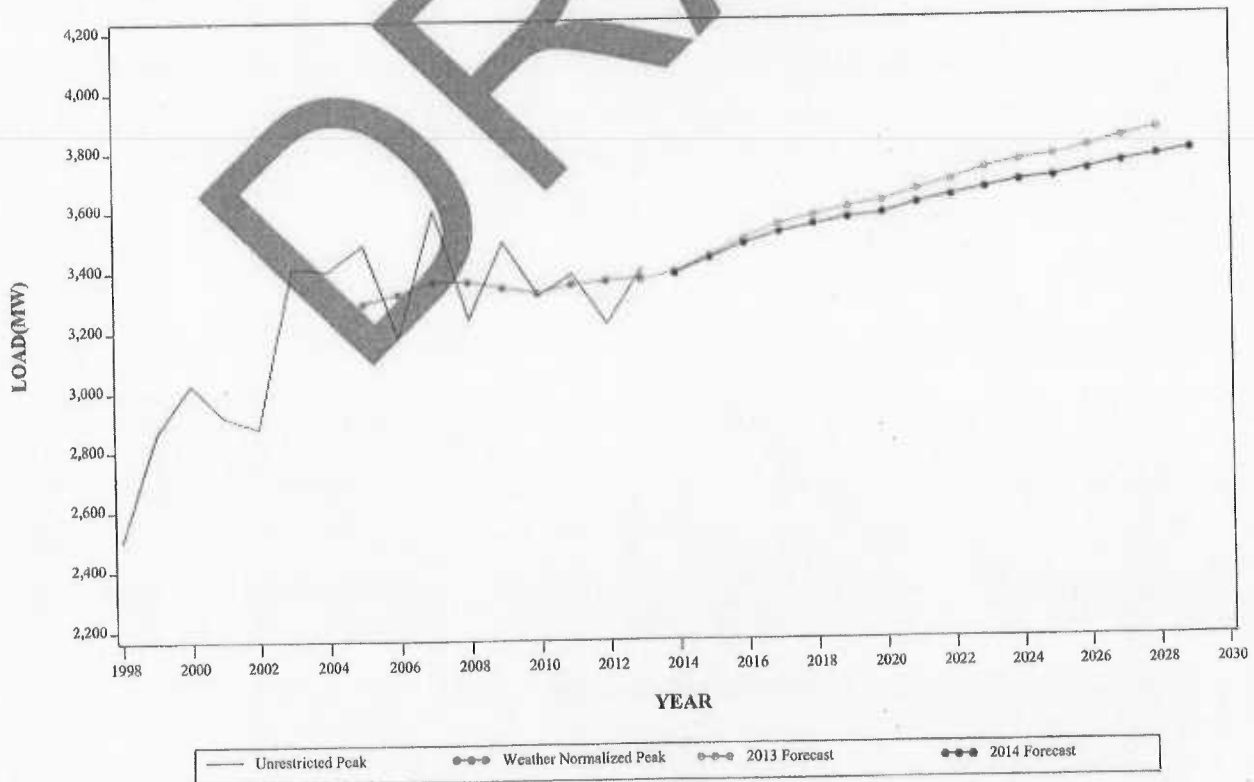
**WINTER PEAK DEMAND FOR BGE
GEOGRAPHIC ZONE**



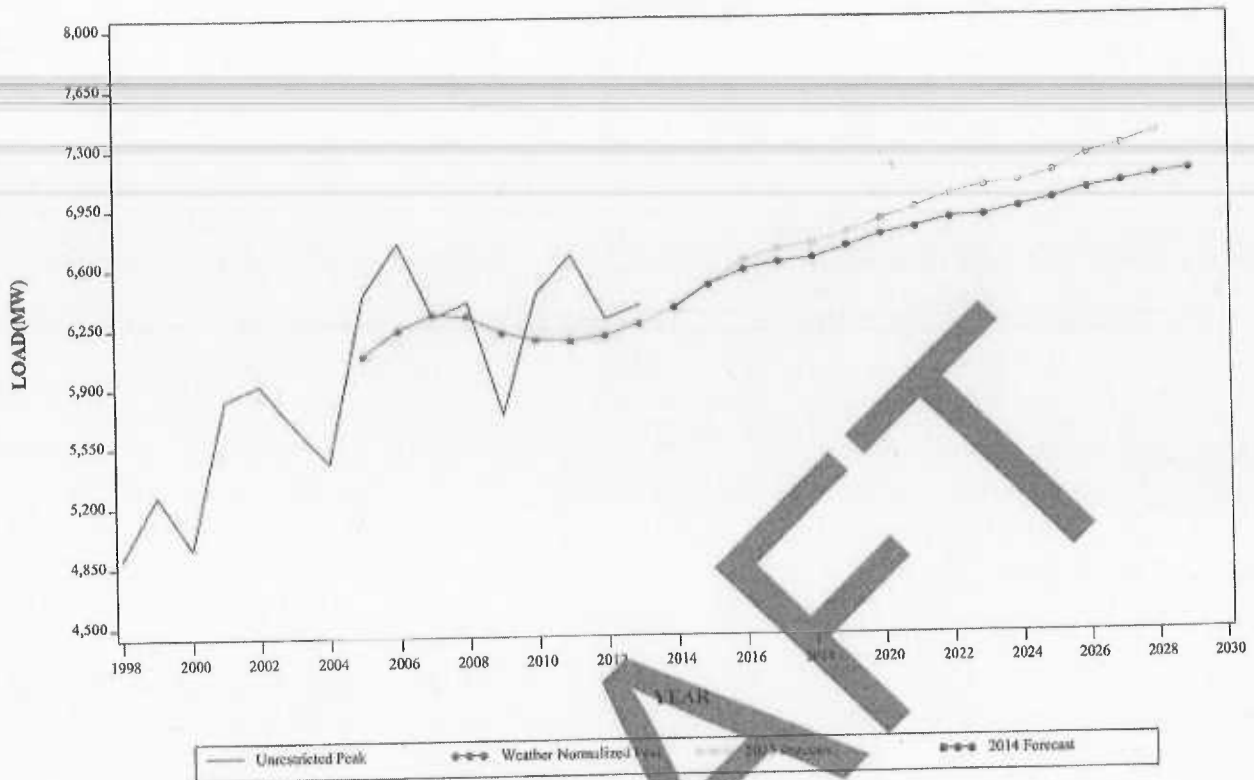
**SUMMER PEAK DEMAND FOR DPL
GEOGRAPHIC ZONE**



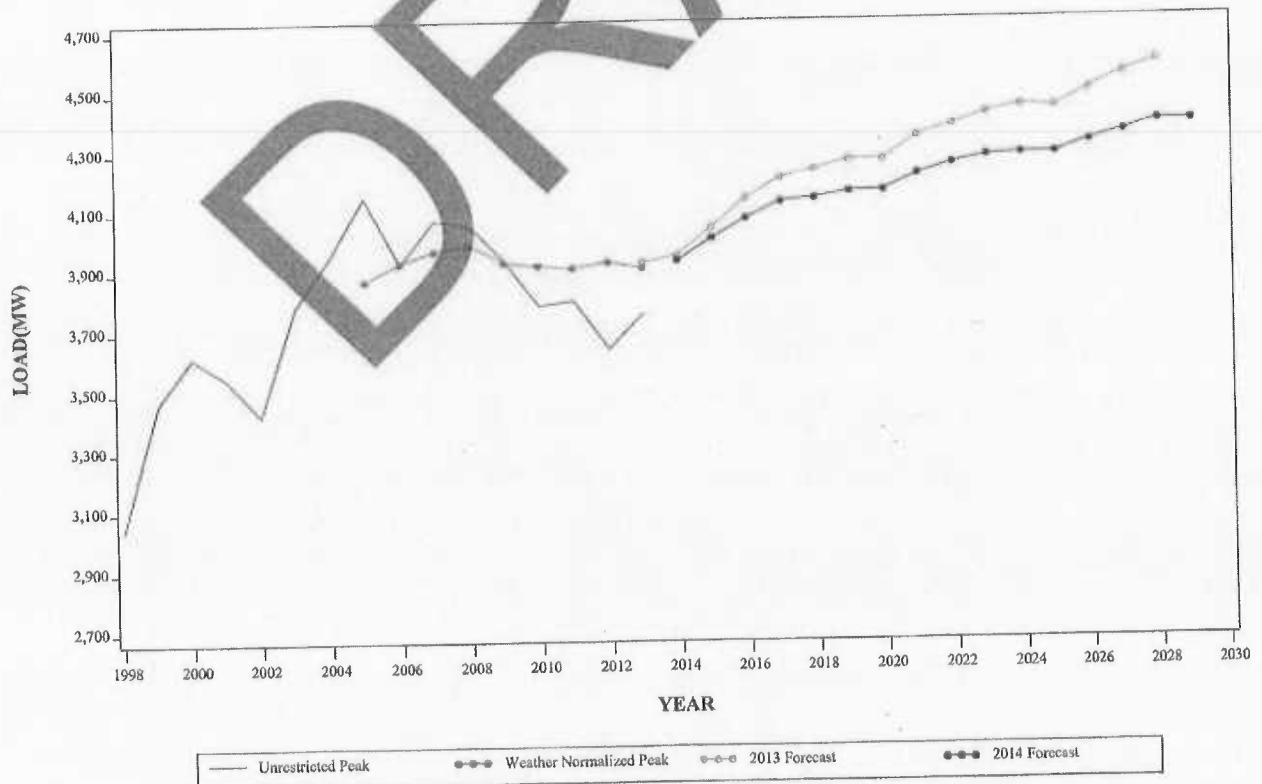
**WINTER PEAK DEMAND FOR DPL
GEOGRAPHIC ZONE**



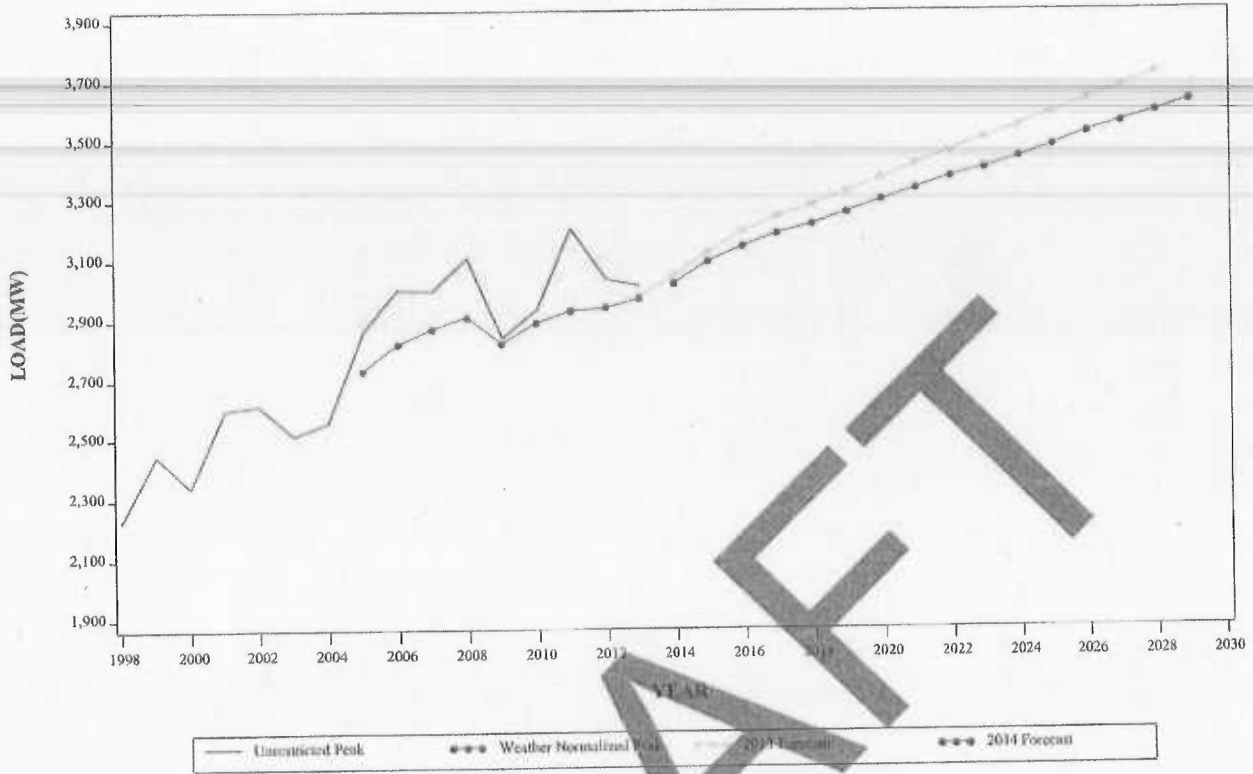
**SUMMER PEAK DEMAND FOR JCPL
GEOGRAPHIC ZONE**



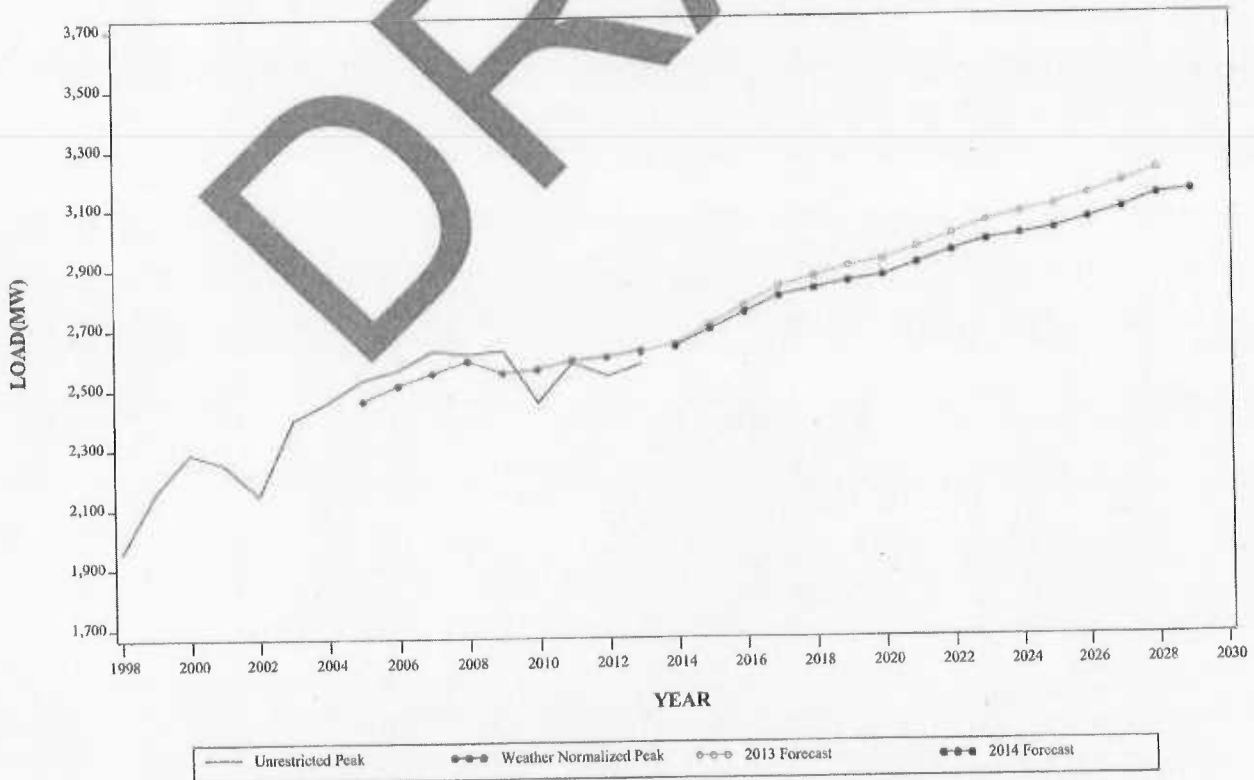
**WINTER PEAK DEMAND FOR JCPL
GEOGRAPHIC ZONE**



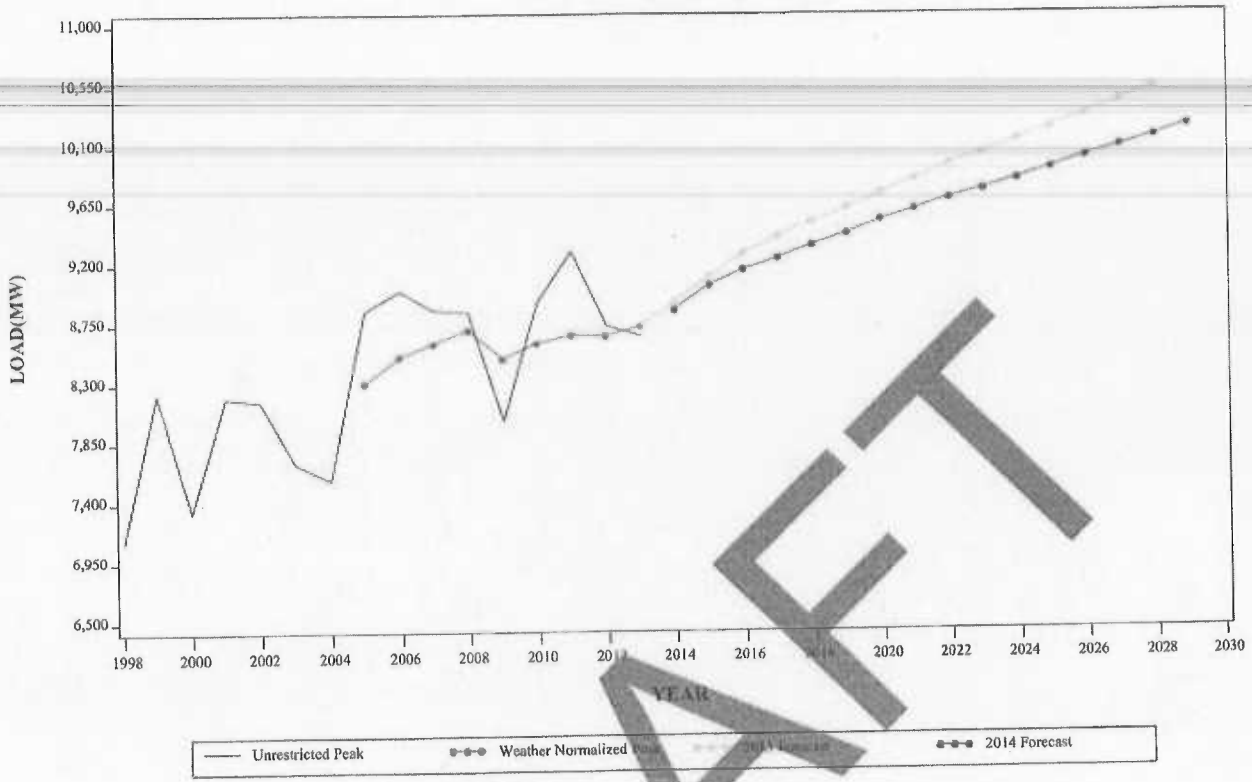
**SUMMER PEAK DEMAND FOR METED
GEOGRAPHIC ZONE**



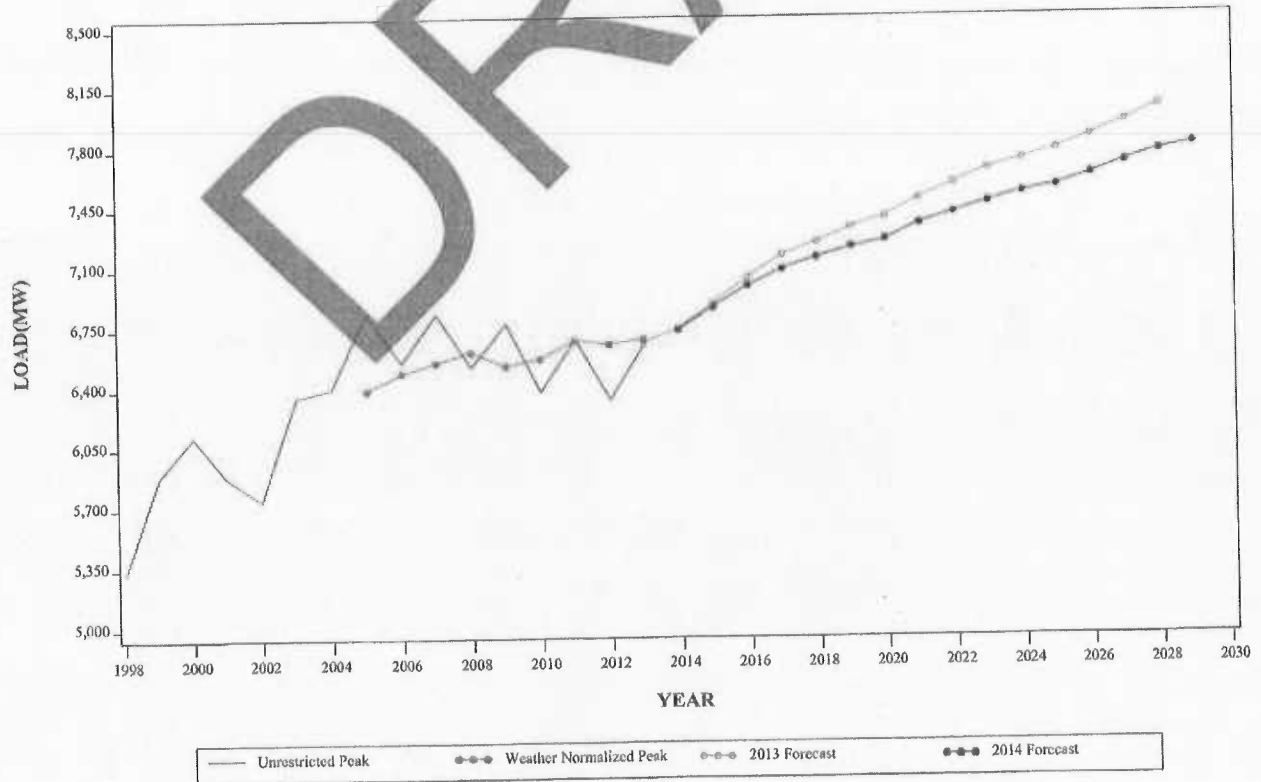
**WINTER PEAK DEMAND FOR METED
GEOGRAPHIC ZONE**



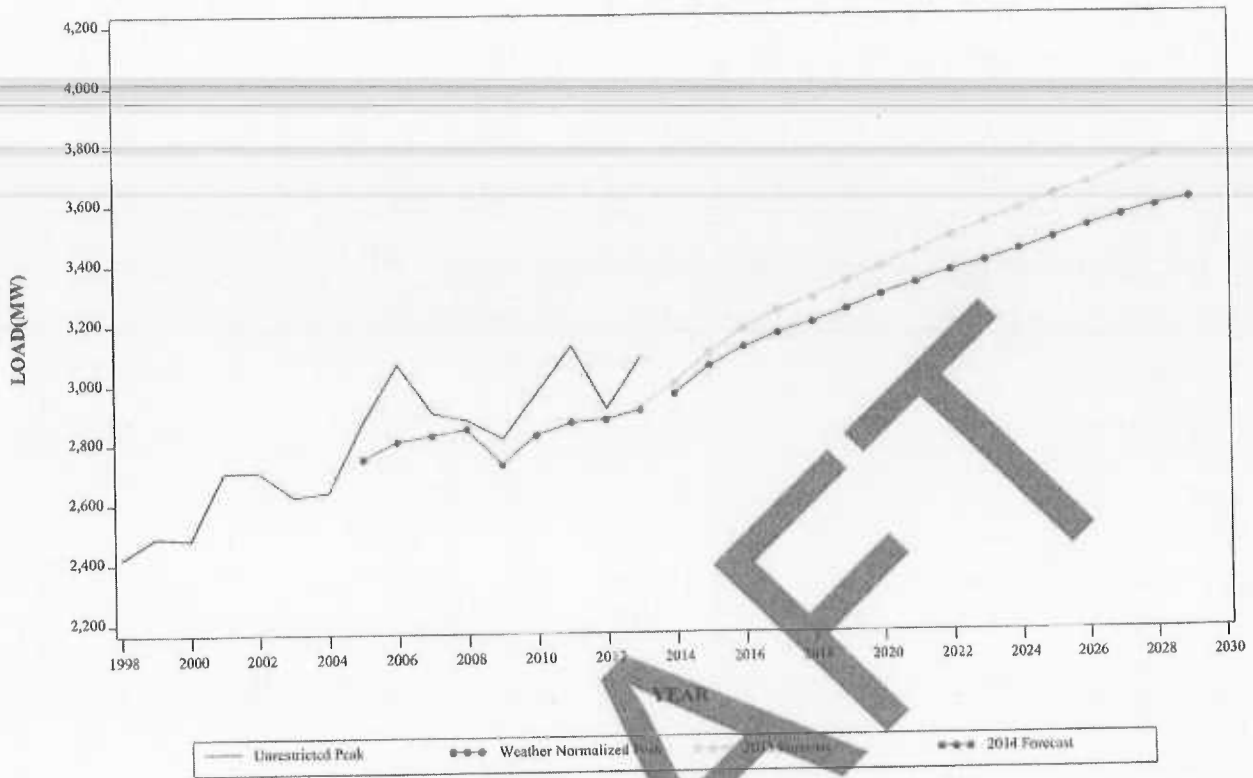
**SUMMER PEAK DEMAND FOR PECO
GEOGRAPHIC ZONE**



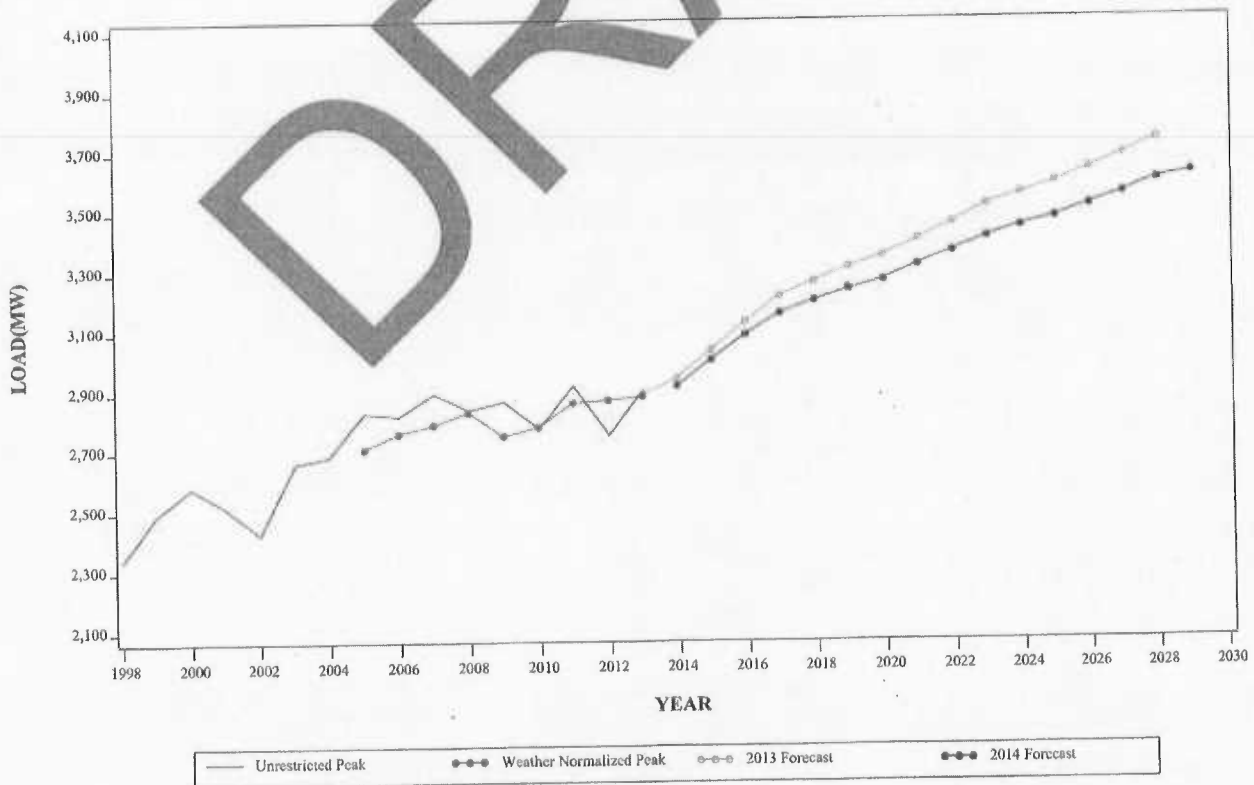
**WINTER PEAK DEMAND FOR PECO
GEOGRAPHIC ZONE**



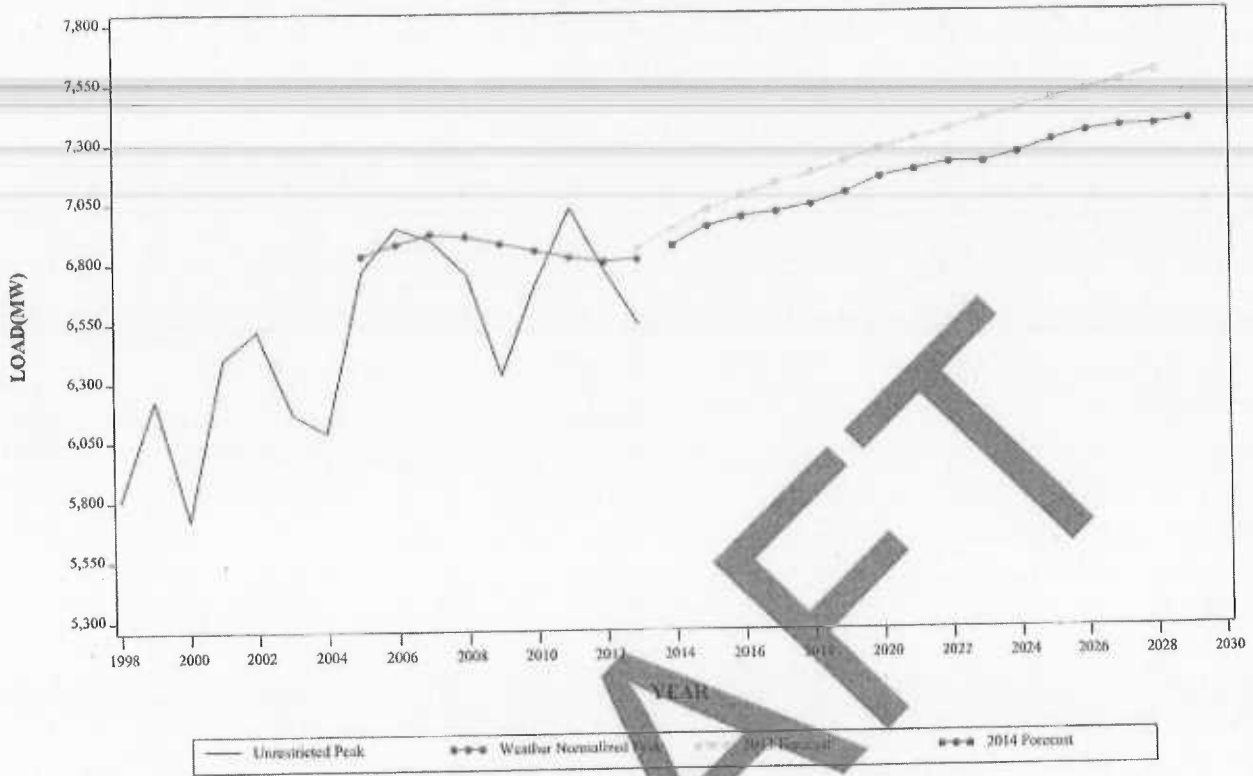
**SUMMER PEAK DEMAND FOR PENLC
GEOGRAPHIC ZONE**



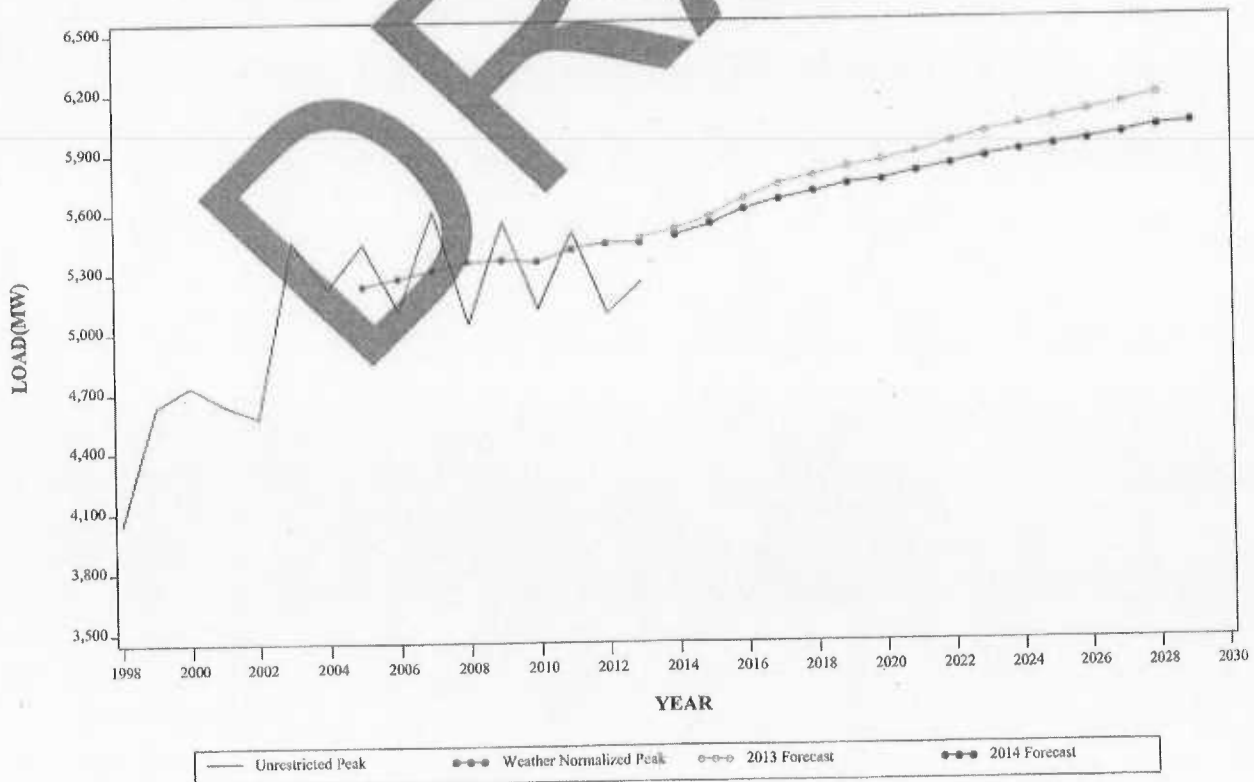
**WINTER PEAK DEMAND FOR PENLC
GEOGRAPHIC ZONE**



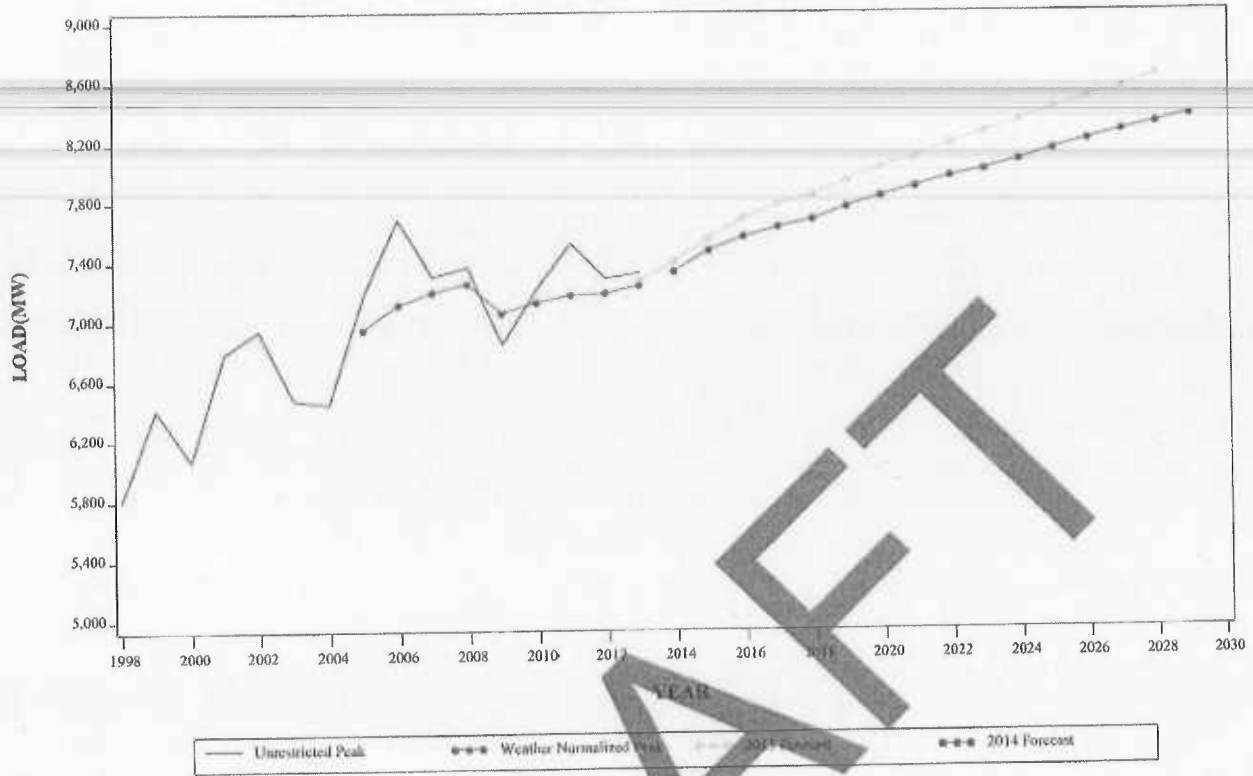
**SUMMER PEAK DEMAND FOR PEPCO
GEOGRAPHIC ZONE**



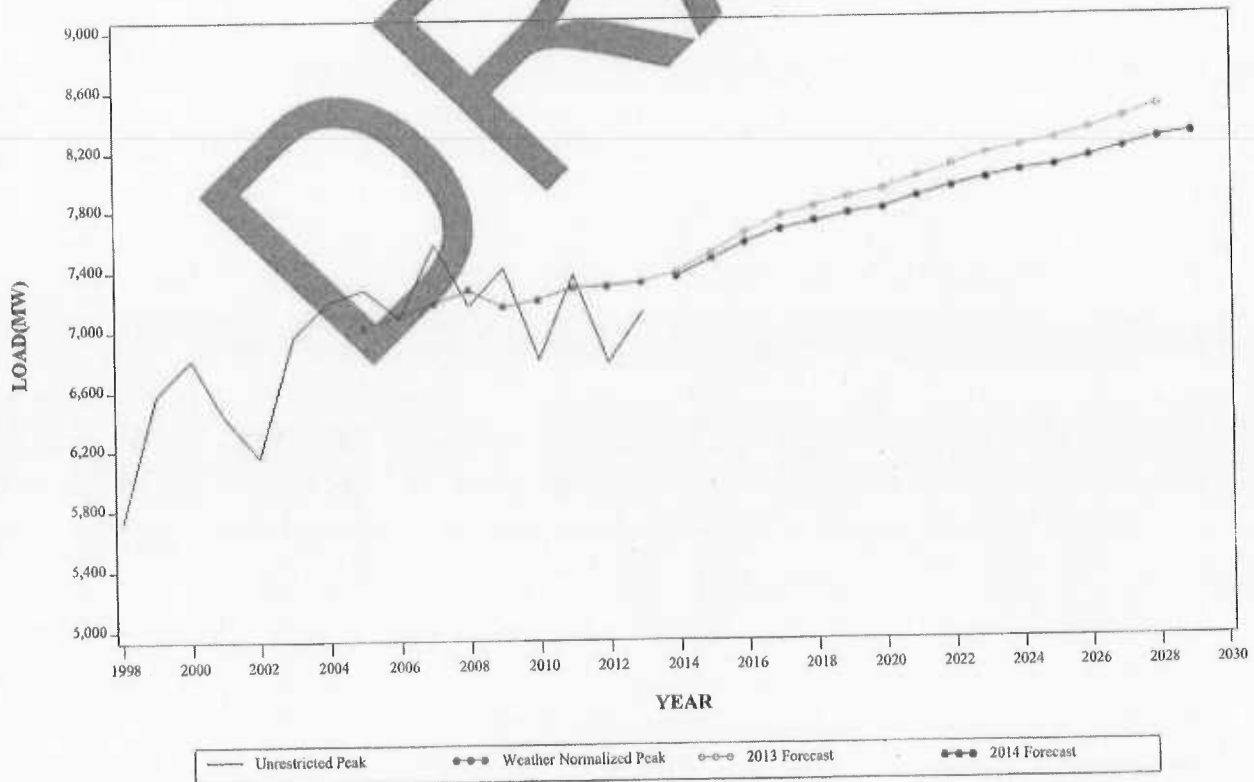
**WINTER PEAK DEMAND FOR PEPCO
GEOGRAPHIC ZONE**



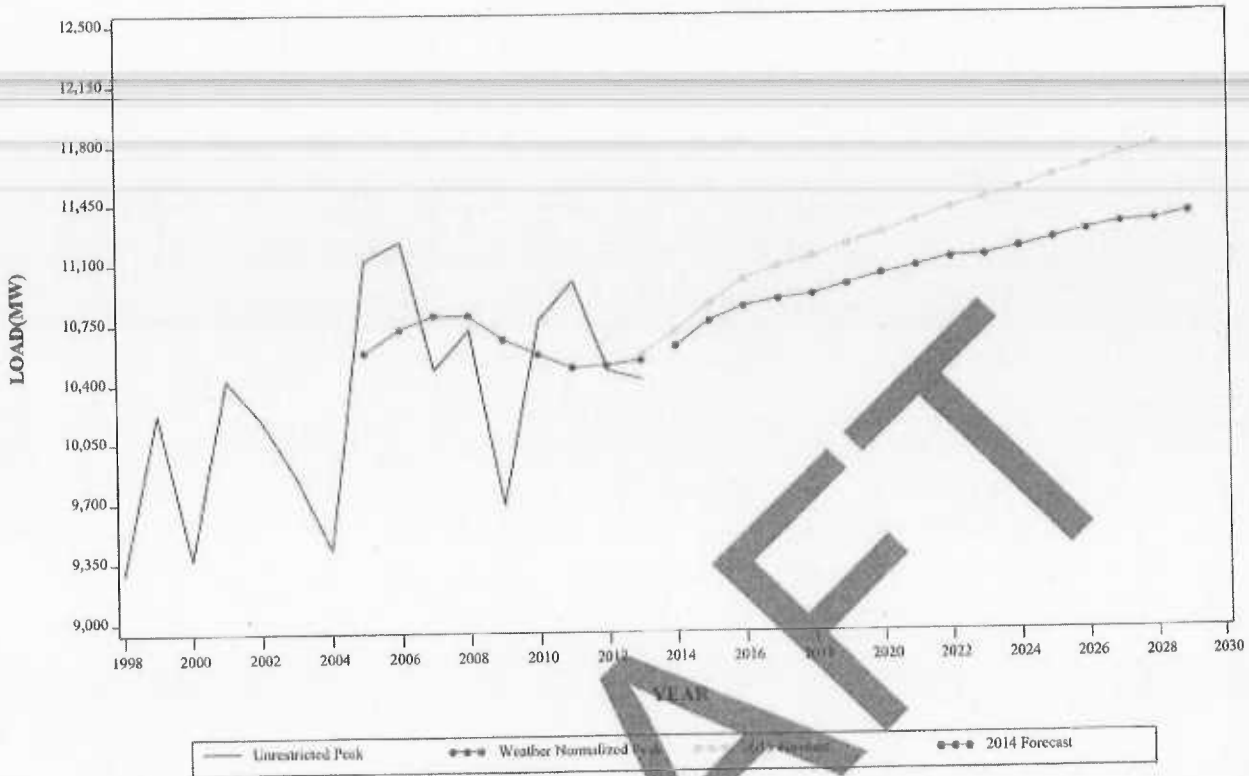
**SUMMER PEAK DEMAND FOR PL
GEOGRAPHIC ZONE**



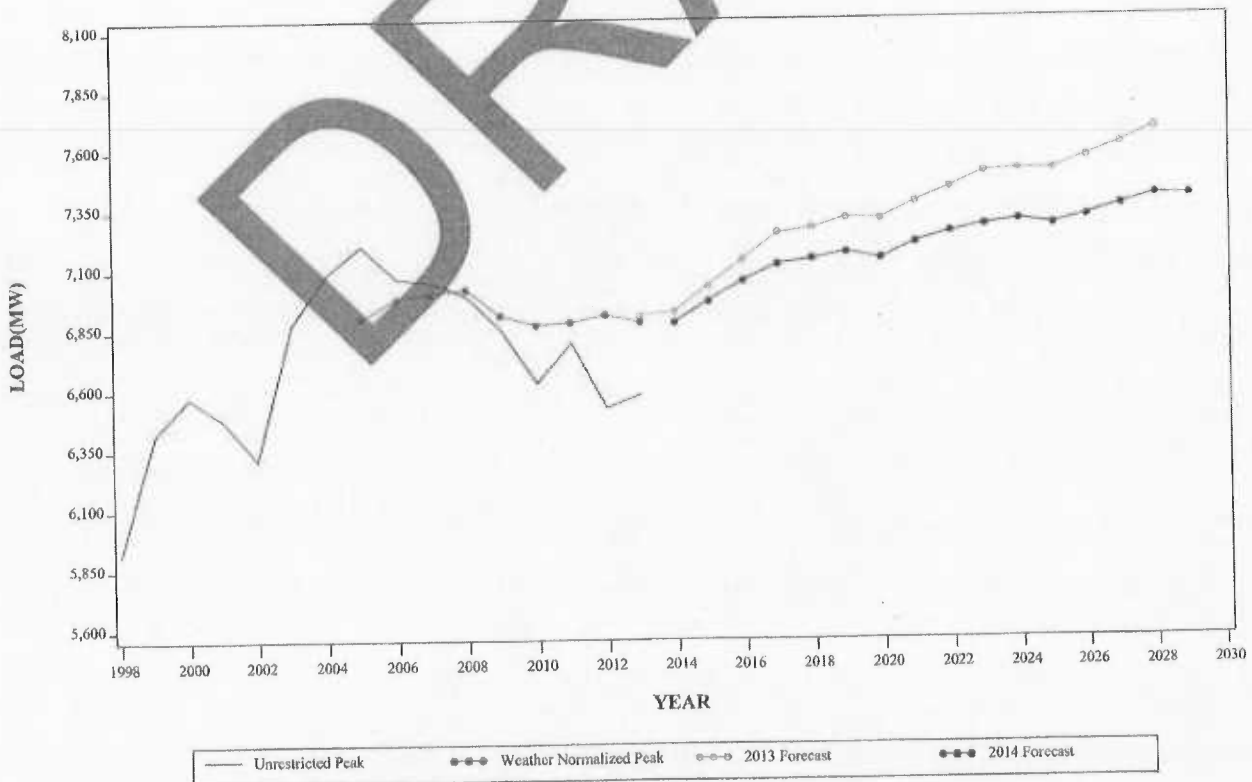
**WINTER PEAK DEMAND FOR PL
GEOGRAPHIC ZONE**



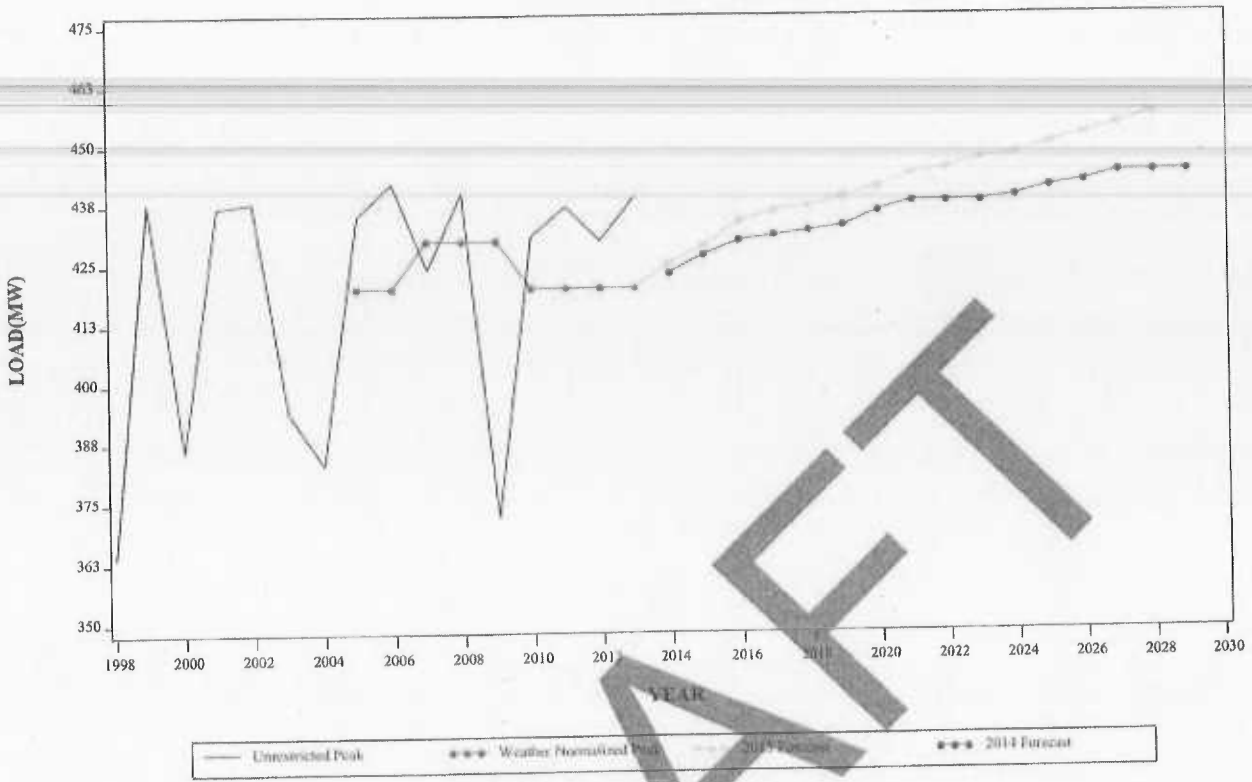
**SUMMER PEAK DEMAND FOR PS
GEOGRAPHIC ZONE**



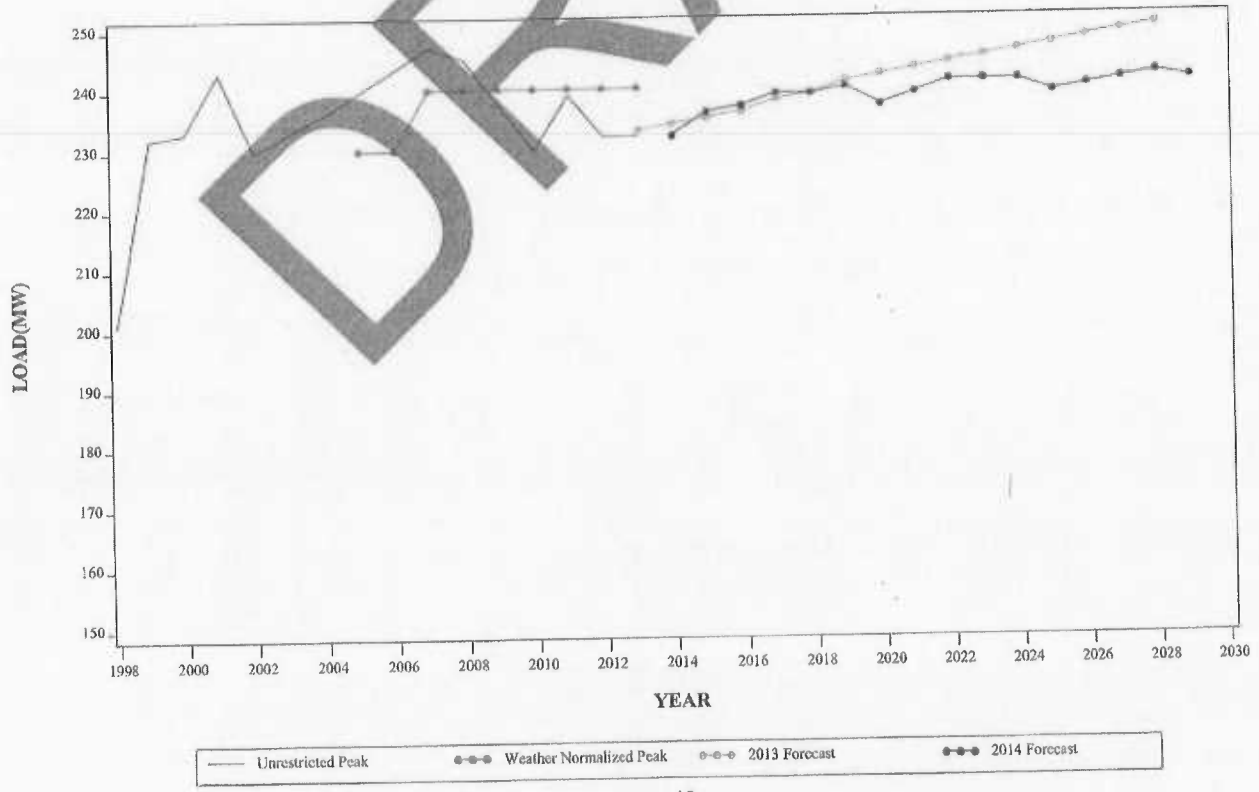
**WINTER PEAK DEMAND FOR PS
GEOGRAPHIC ZONE**



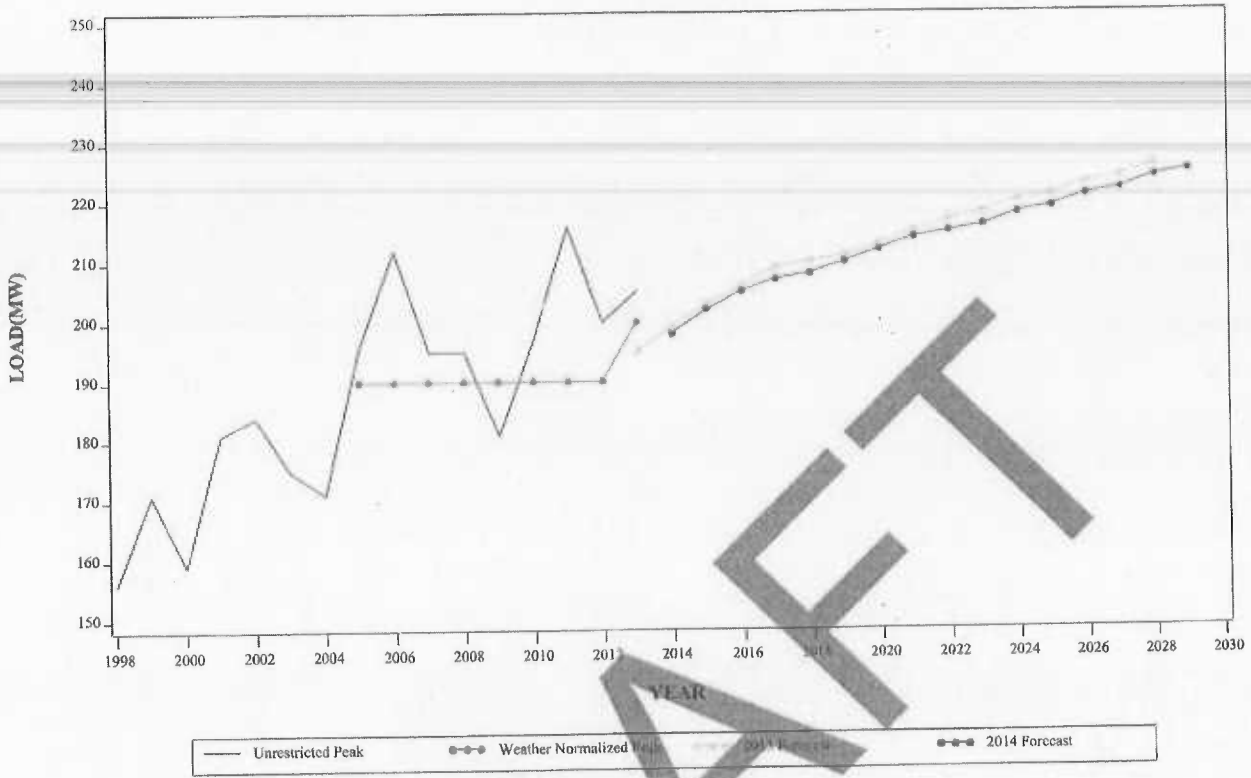
**SUMMER PEAK DEMAND FOR RECO
GEOGRAPHIC ZONE**



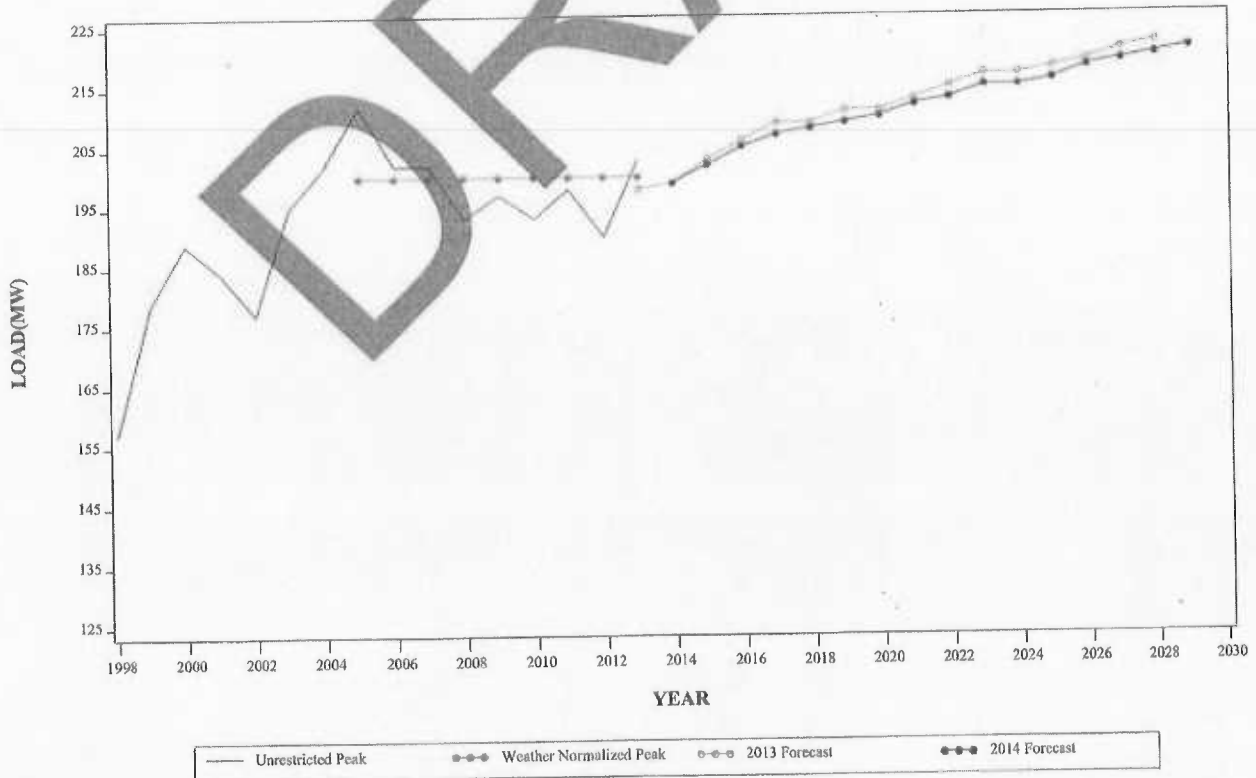
**WINTER PEAK DEMAND FOR RECO
GEOGRAPHIC ZONE**



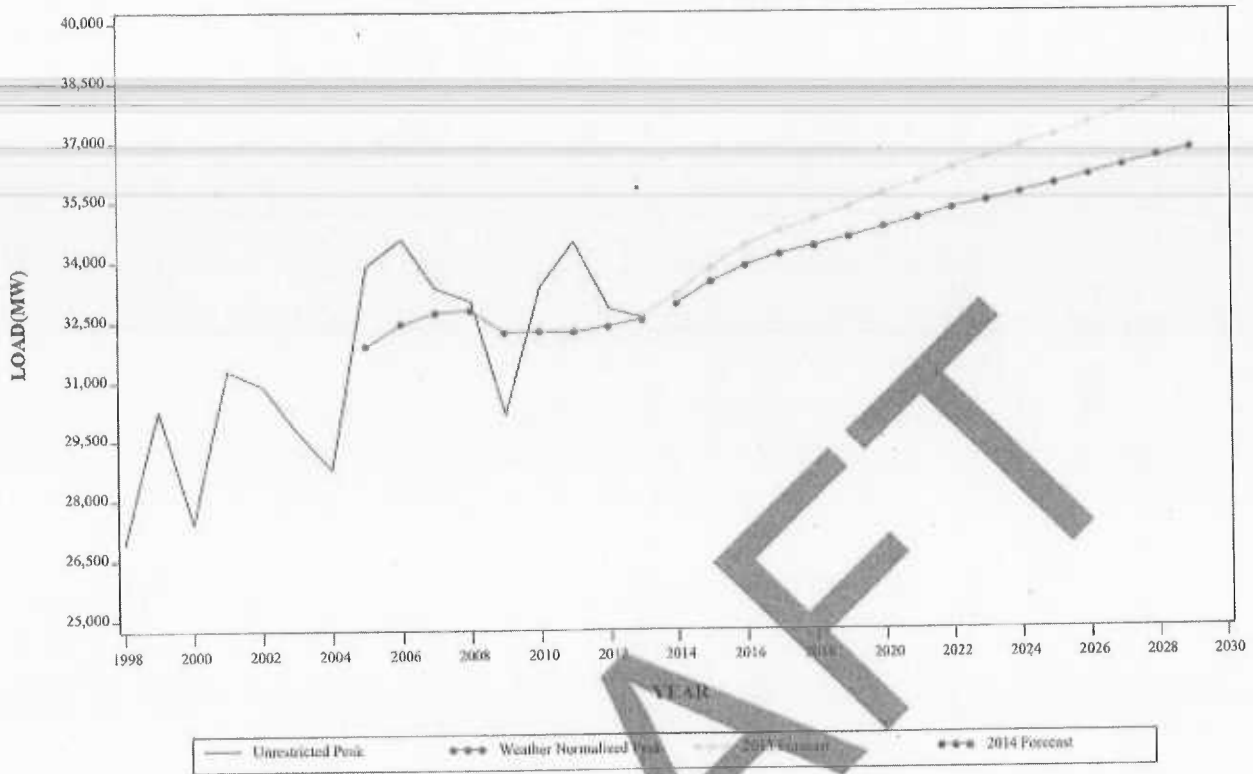
**SUMMER PEAK DEMAND FOR UGI
GEOGRAPHIC ZONE**



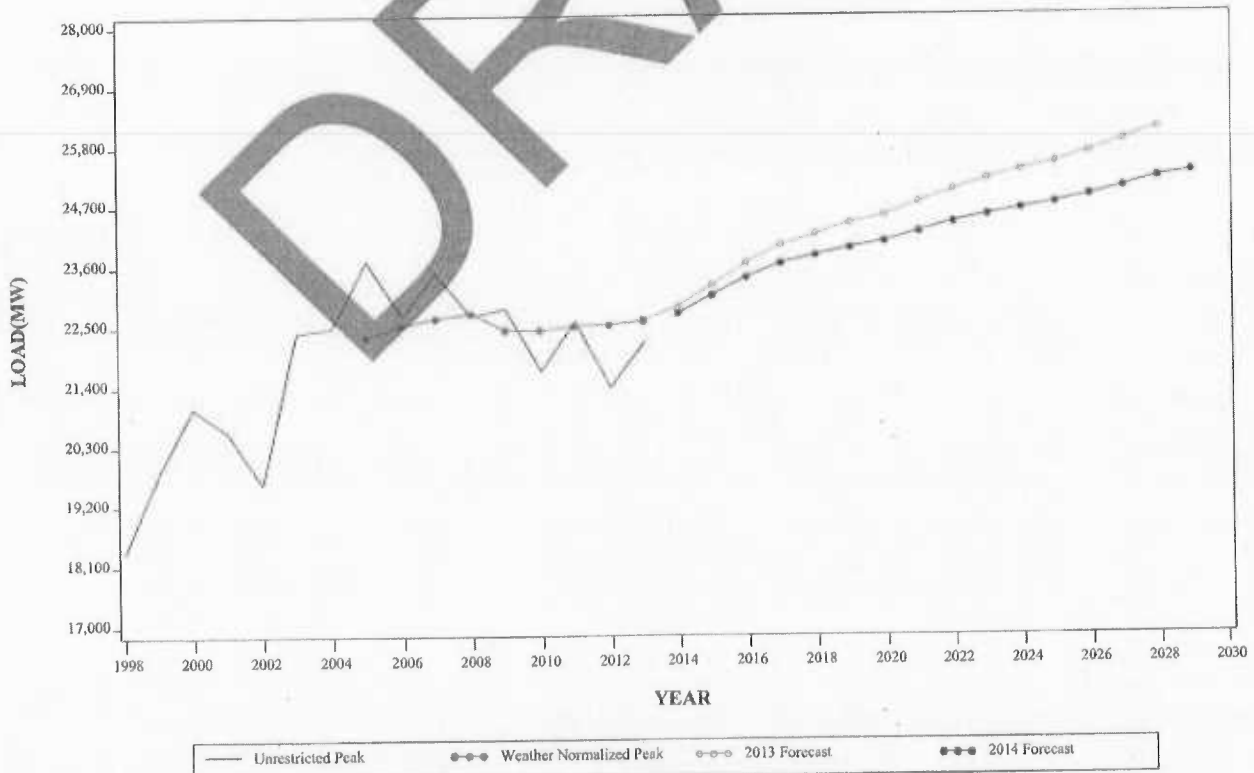
**WINTER PEAK DEMAND FOR UGI
GEOGRAPHIC ZONE**



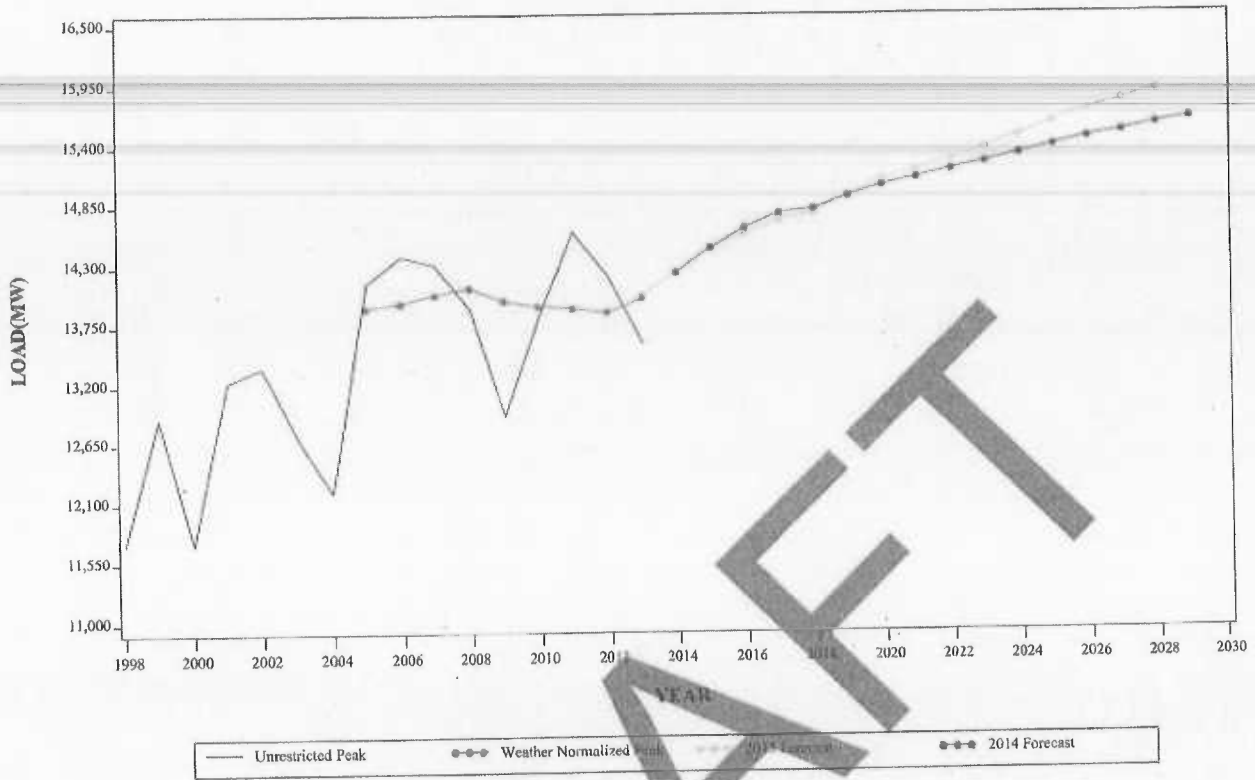
SUMMER PEAK DEMAND FOR EASTERN MID-ATLANTIC GEOGRAPHIC ZONE



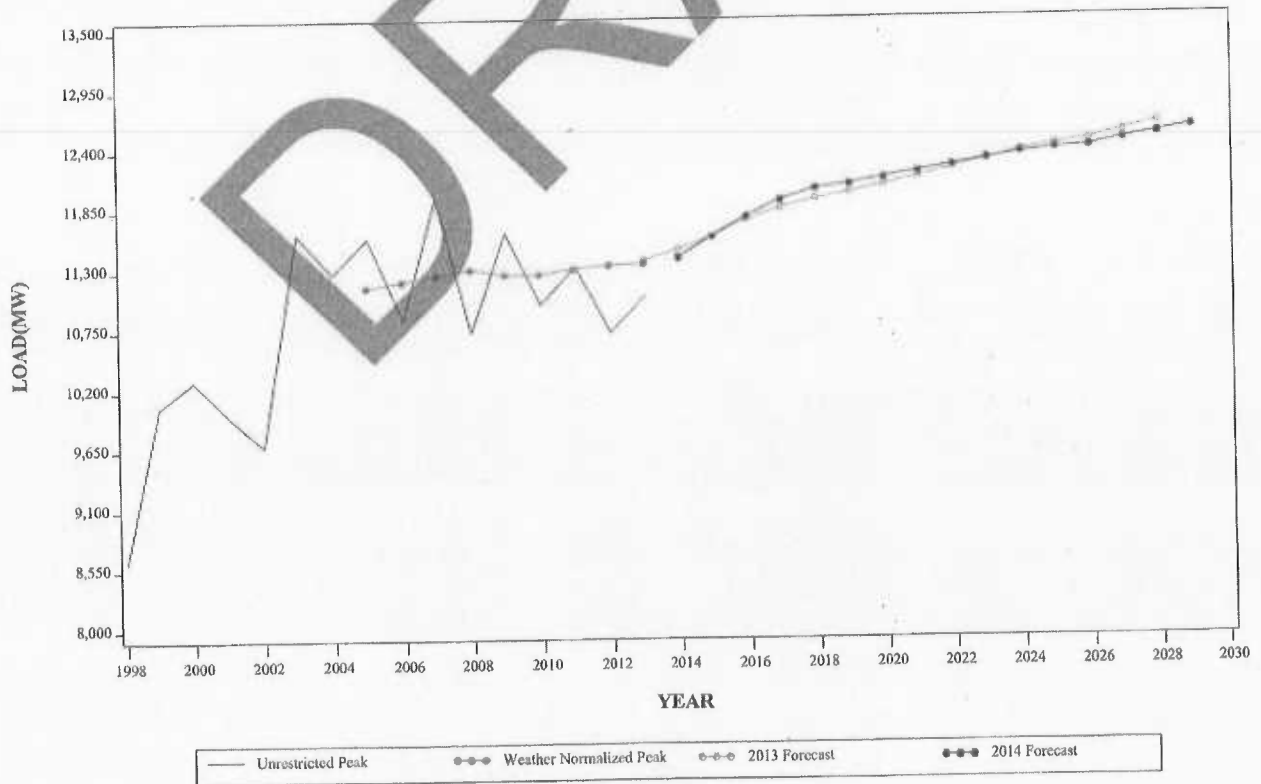
WINTER PEAK DEMAND FOR EASTERN MID-ATLANTIC GEOGRAPHIC ZONE



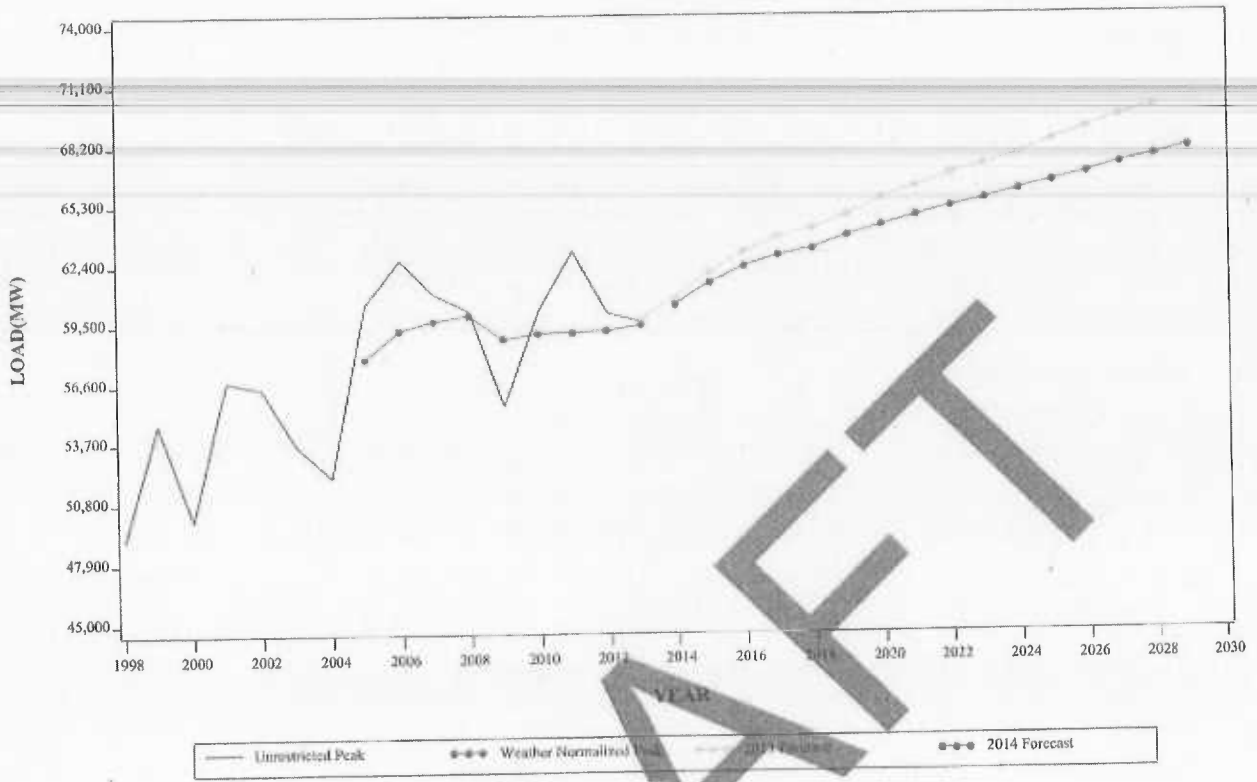
**SUMMER PEAK DEMAND FOR SOUTHERN MID-ATLANTIC
GEOGRAPHIC ZONE**



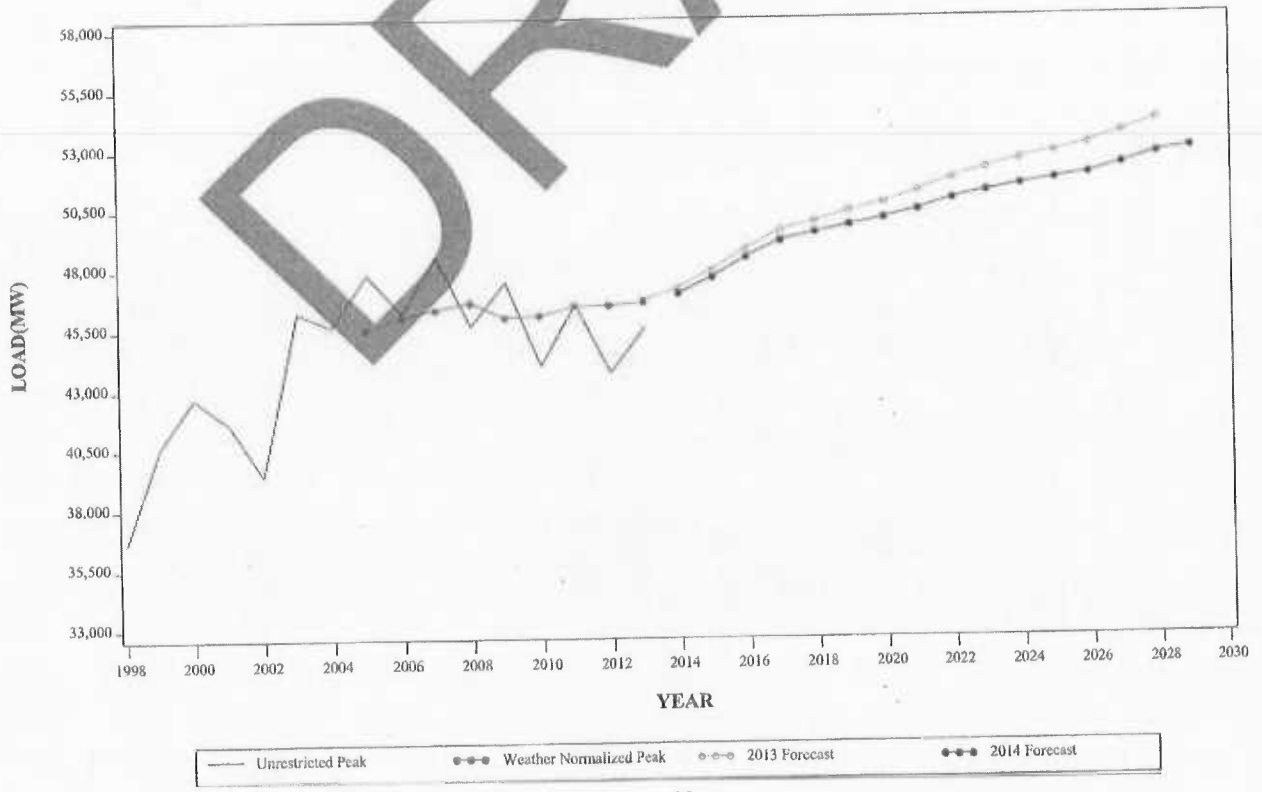
**WINTER PEAK DEMAND FOR SOUTHERN MID-ATLANTIC
GEOGRAPHIC ZONE**



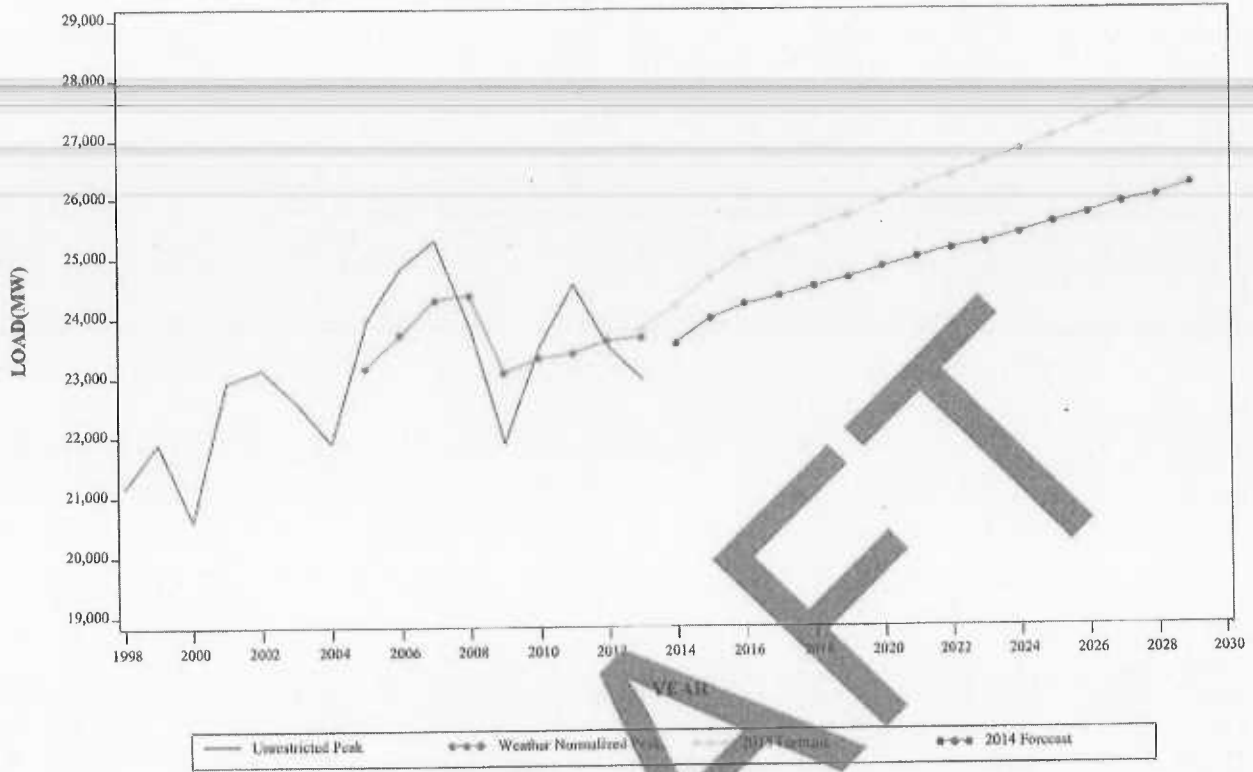
**SUMMER PEAK DEMAND FOR PJM MID-ATLANTIC
GEOGRAPHIC ZONE**



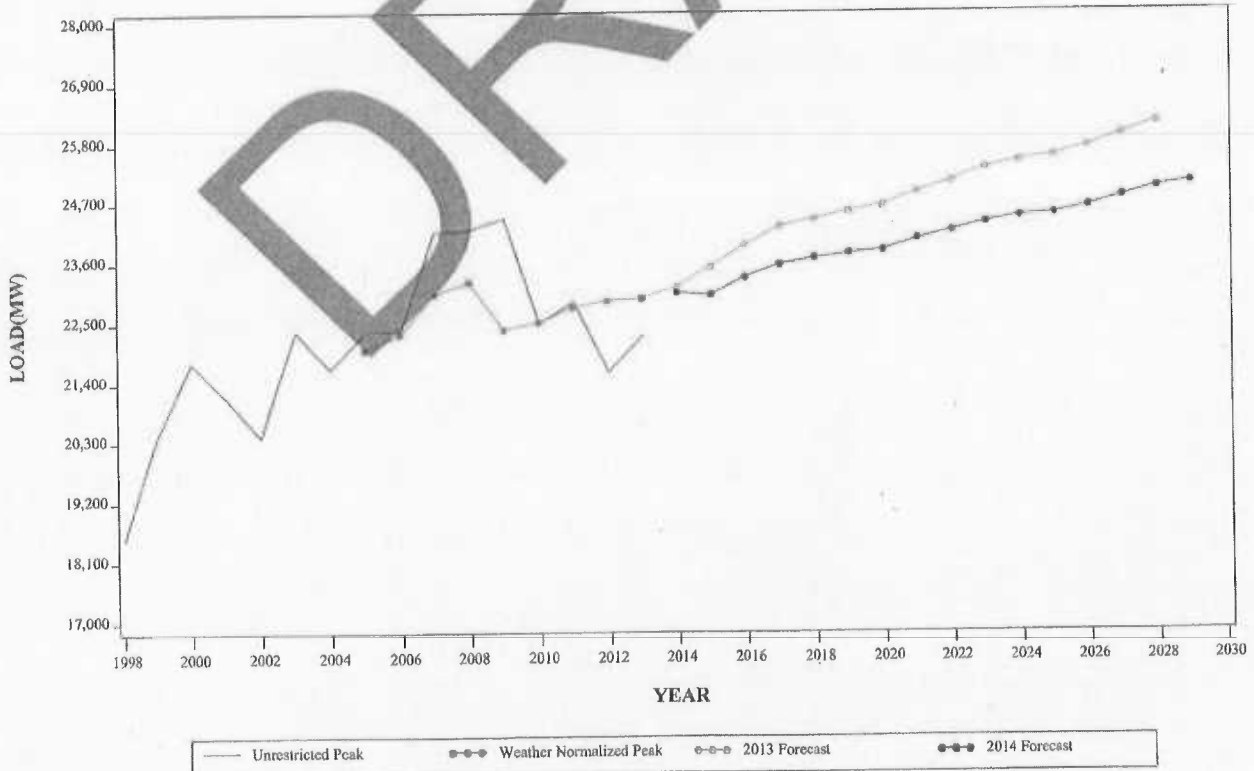
**WINTER PEAK DEMAND FOR PJM MID-ATLANTIC
GEOGRAPHIC ZONE**



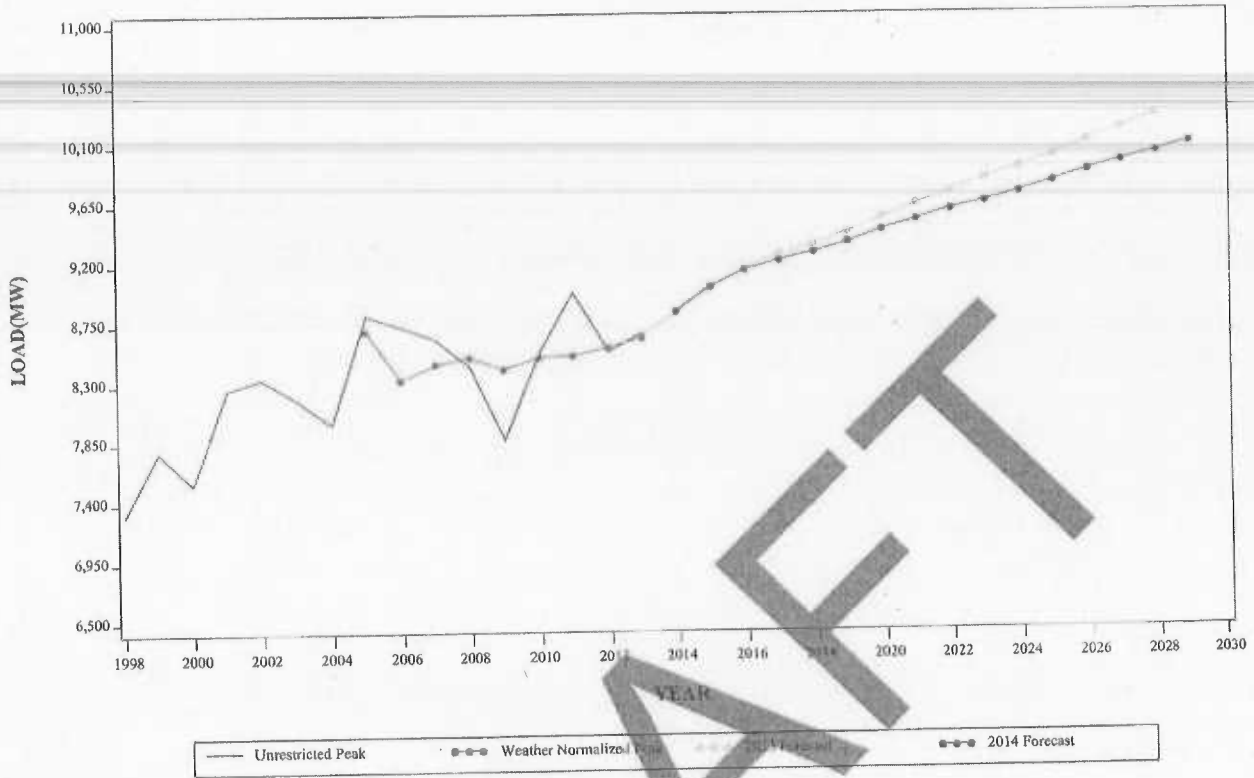
**SUMMER PEAK DEMAND FOR AEP
GEOGRAPHIC ZONE**



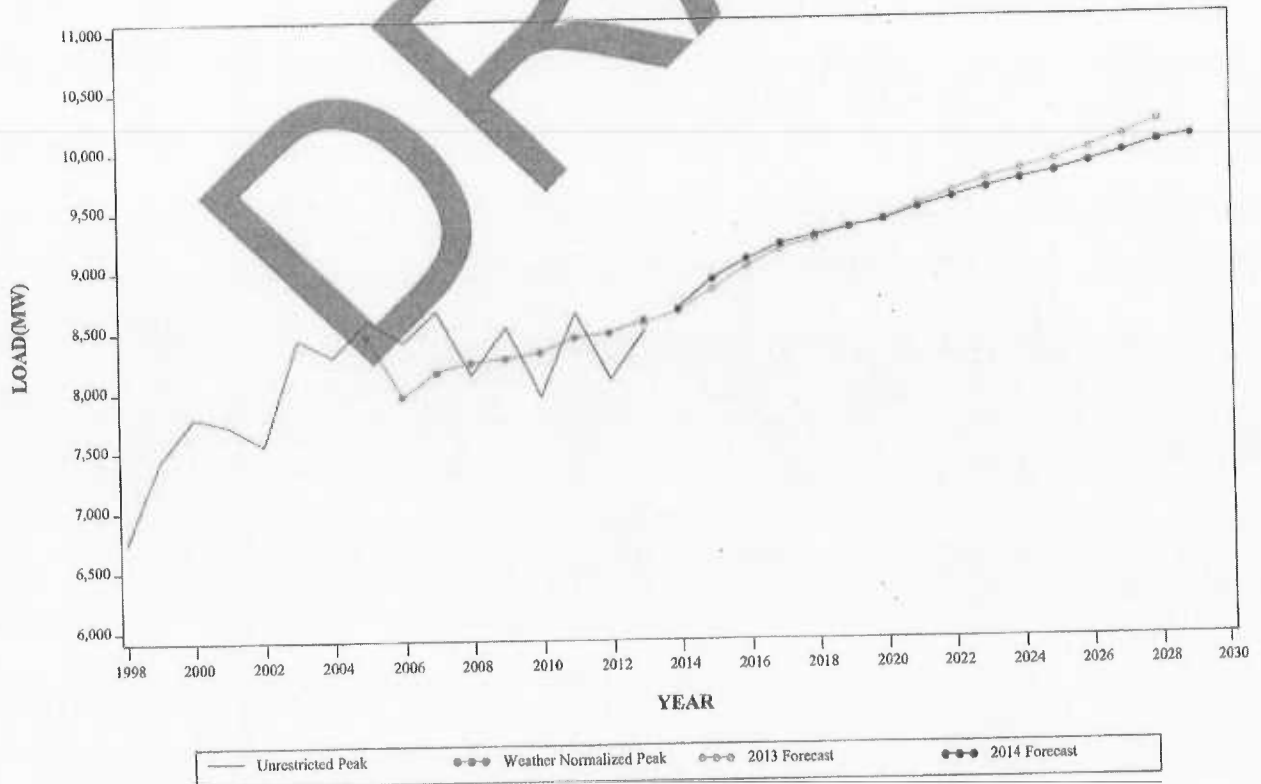
**WINTER PEAK DEMAND FOR AEP
GEOGRAPHIC ZONE**



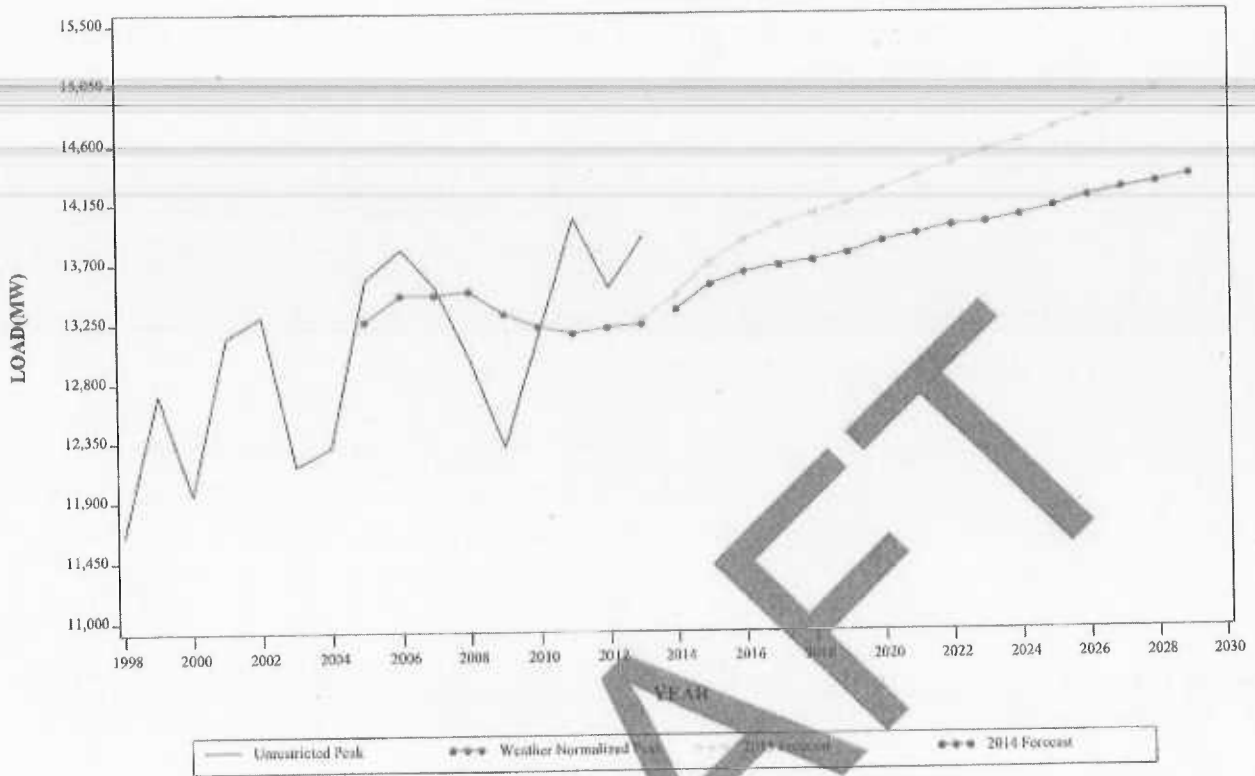
**SUMMER PEAK DEMAND FOR APS
GEOGRAPHIC ZONE**



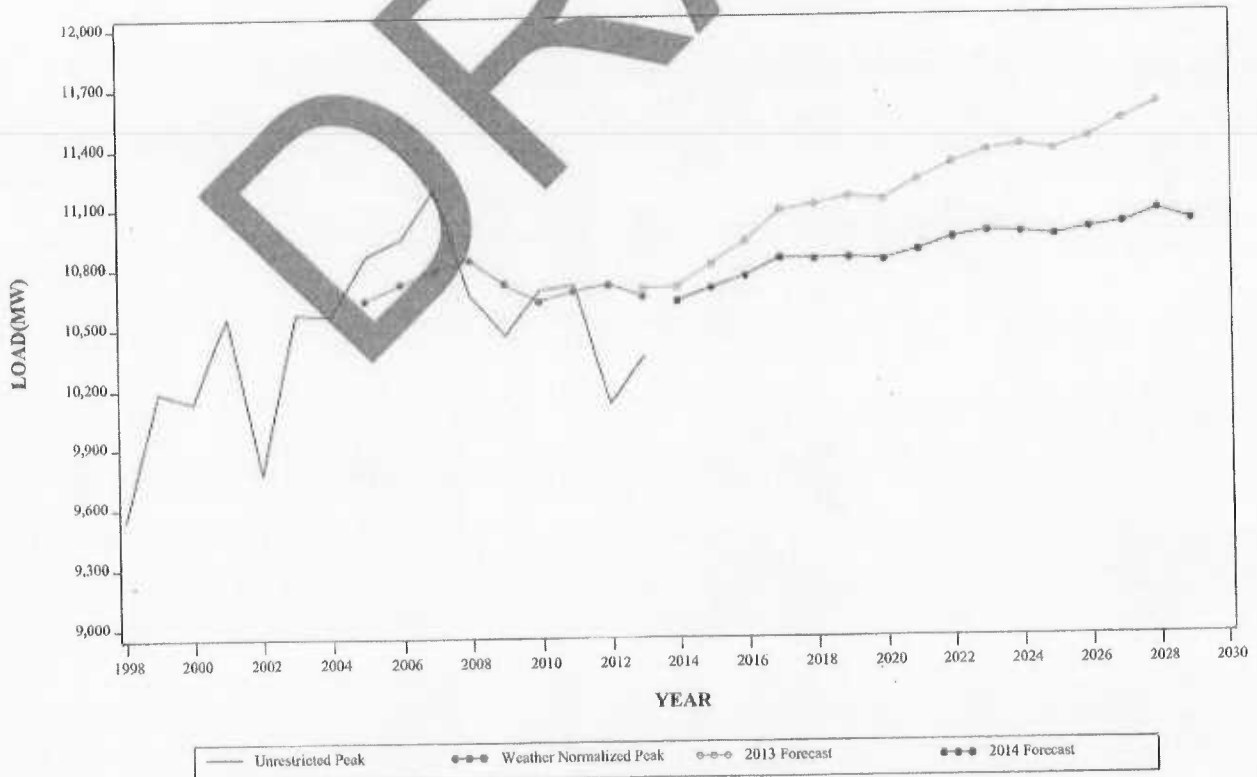
**WINTER PEAK DEMAND FOR APS
GEOGRAPHIC ZONE**



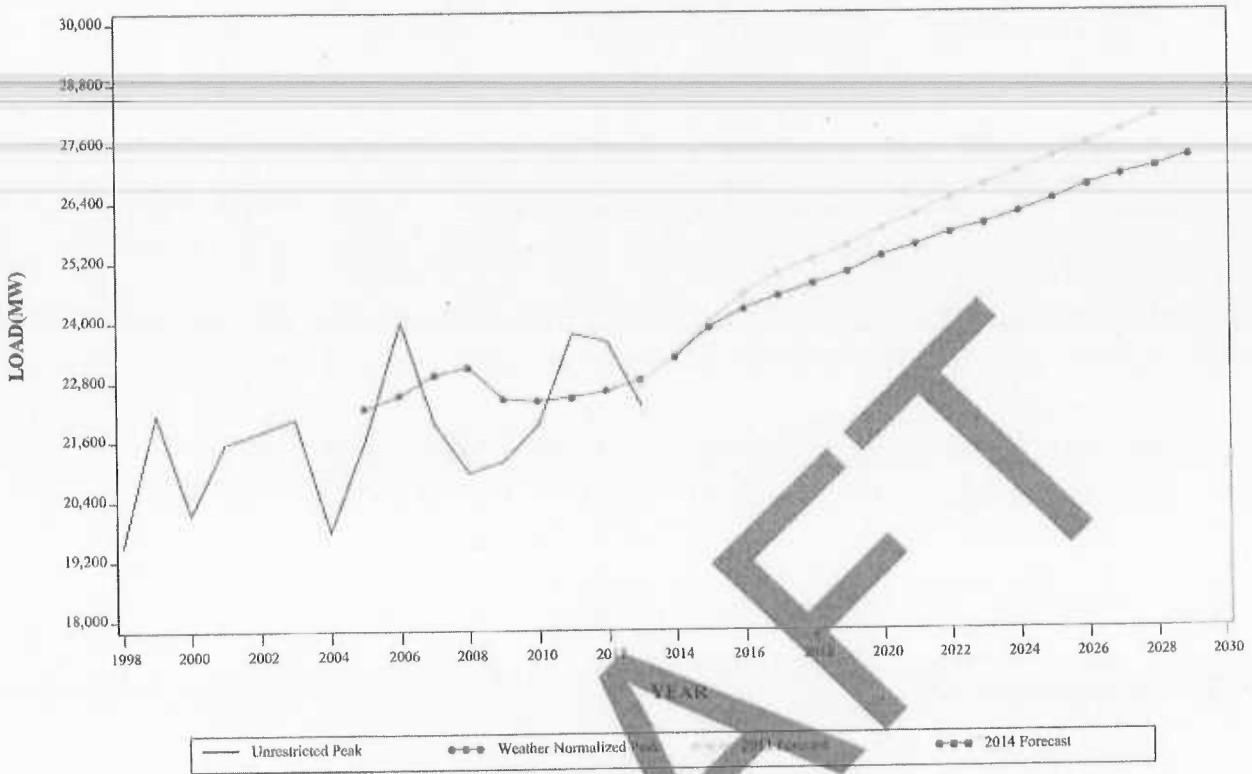
SUMMER PEAK DEMAND FOR ATSI
GEOGRAPHIC ZONE



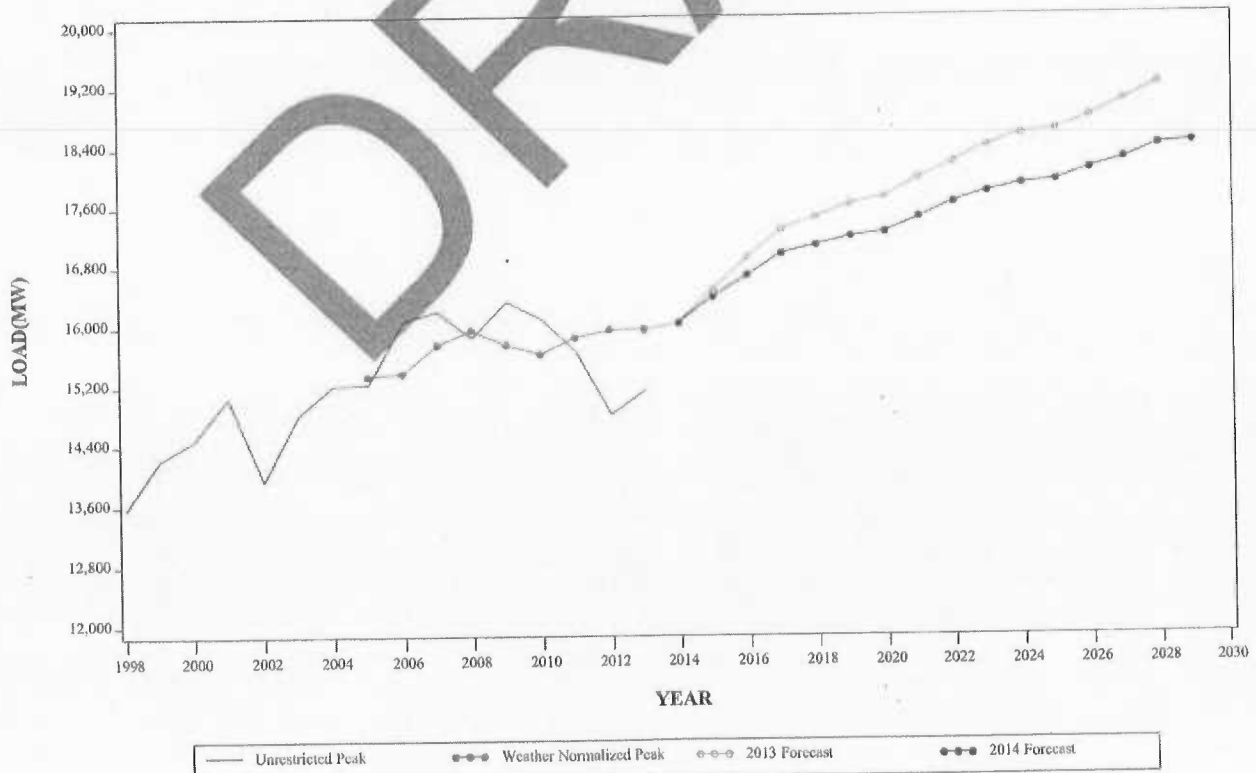
WINTER PEAK DEMAND FOR ATSI
GEOGRAPHIC ZONE



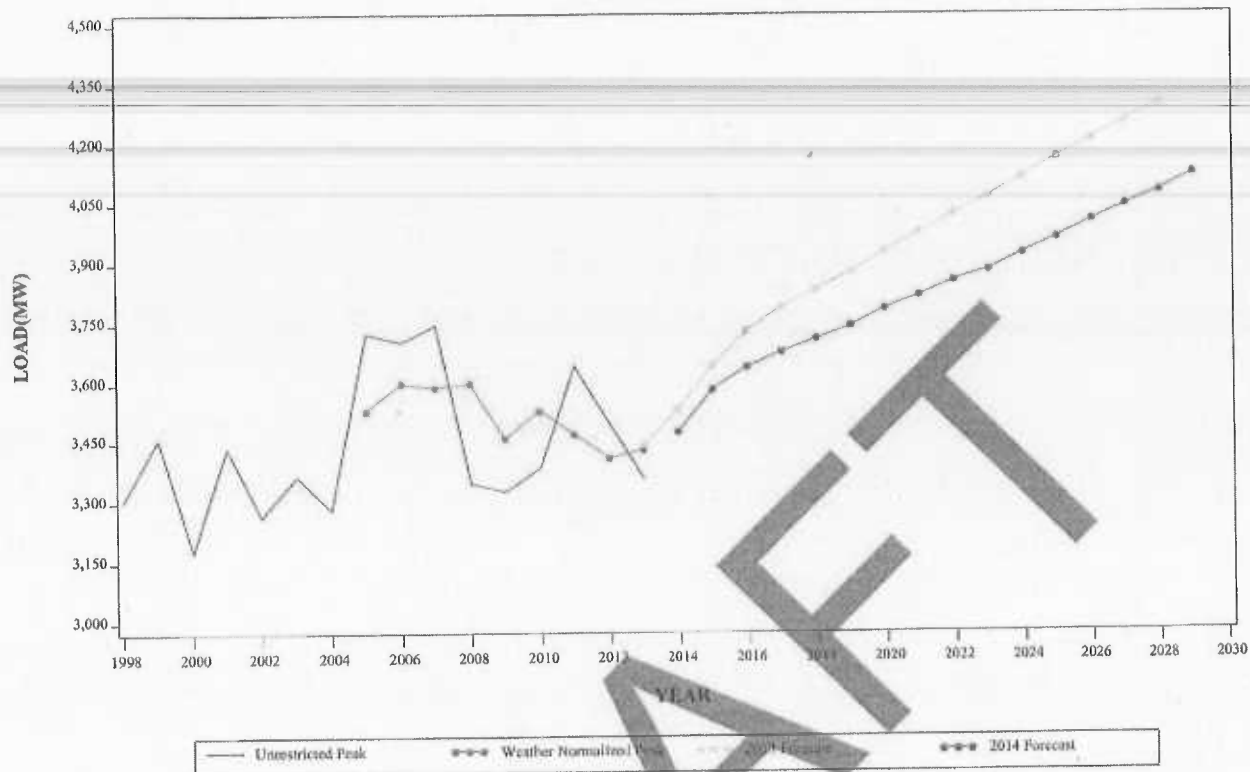
**SUMMER PEAK DEMAND FOR COMED
GEOGRAPHIC ZONE**



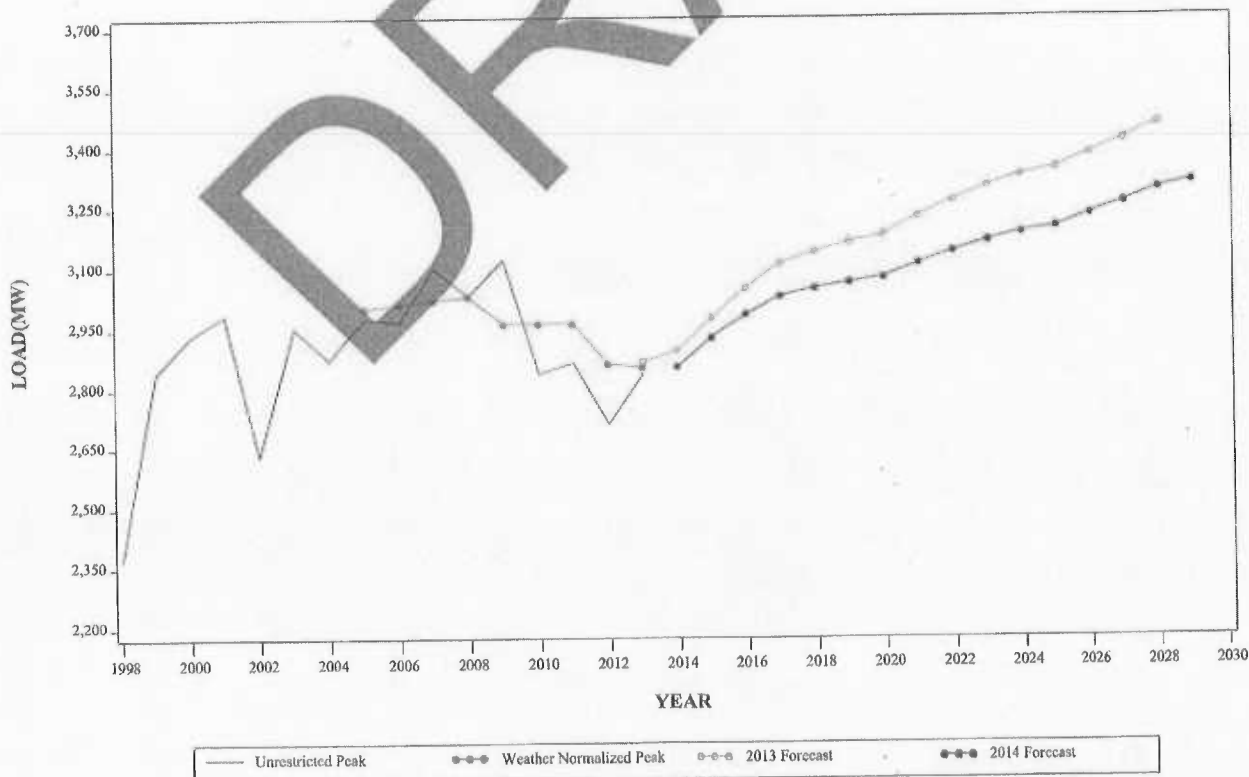
**WINTER PEAK DEMAND FOR COMED
GEOGRAPHIC ZONE**



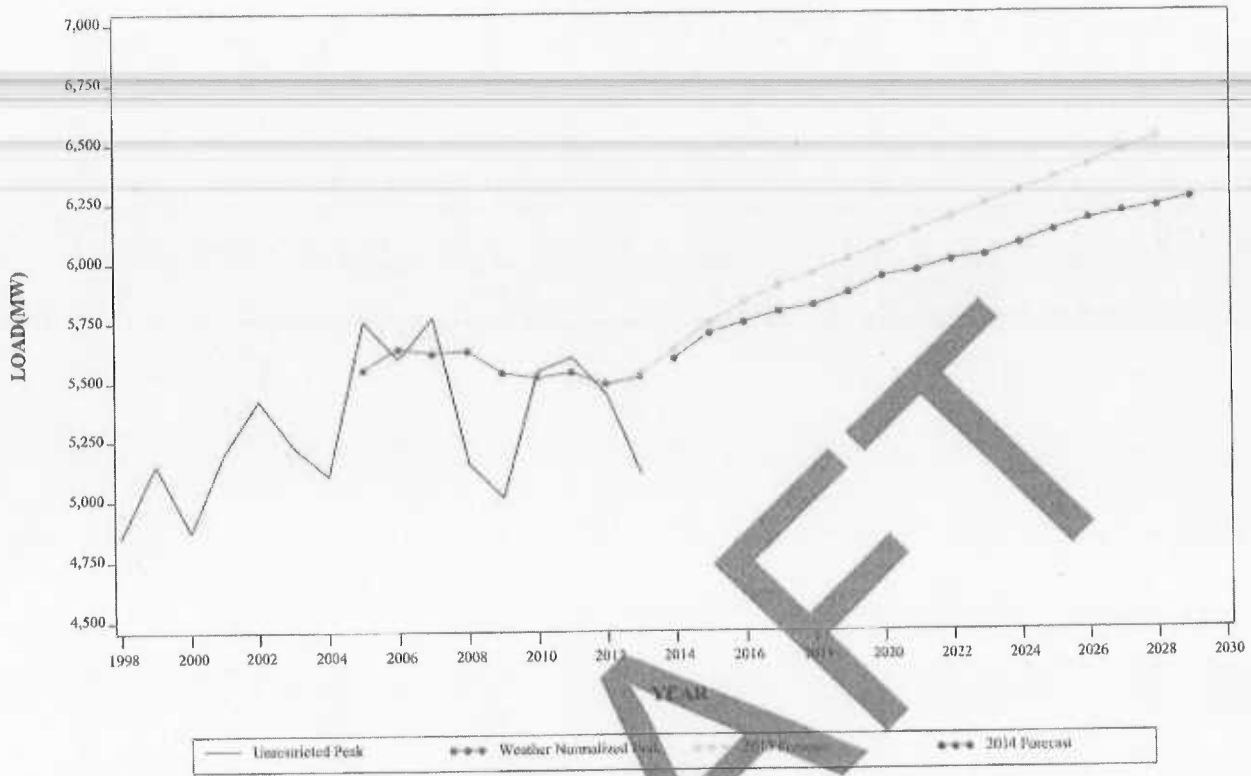
**SUMMER PEAK DEMAND FOR DAYTON
GEOGRAPHIC ZONE**



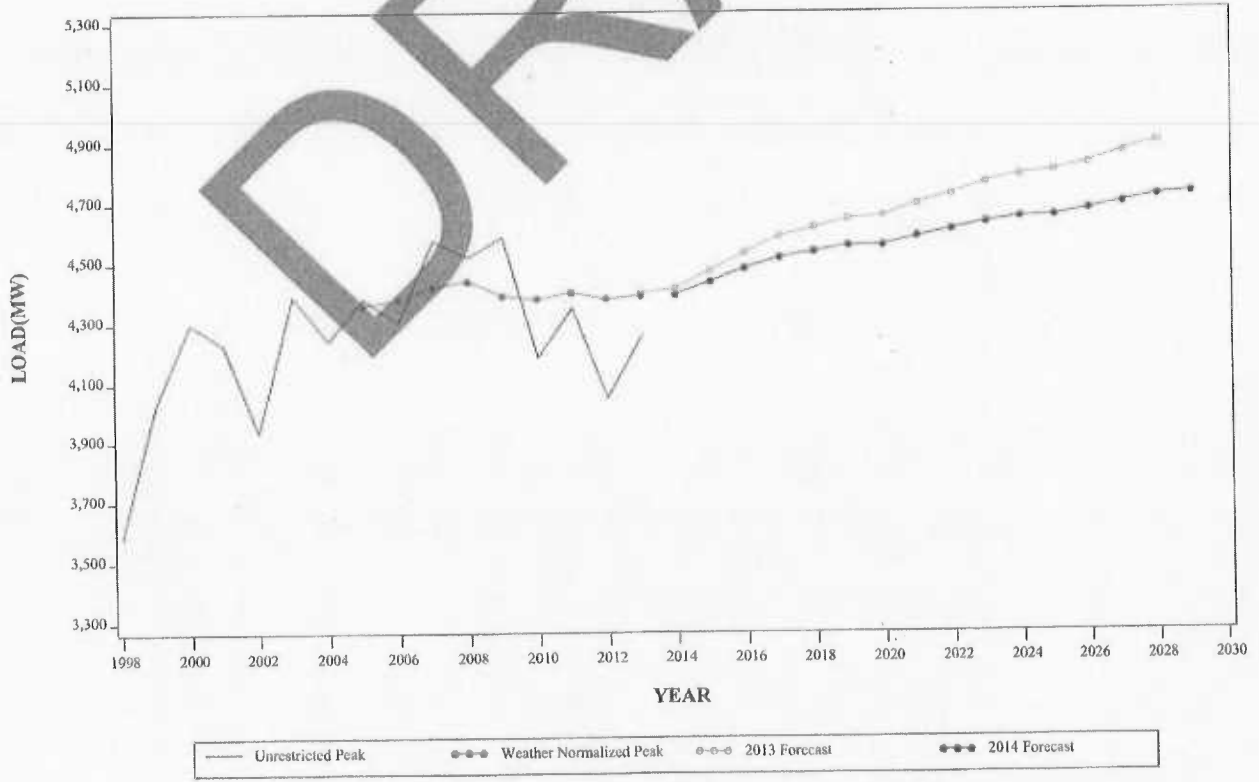
**WINTER PEAK DEMAND FOR DAYTON
GEOGRAPHIC ZONE**



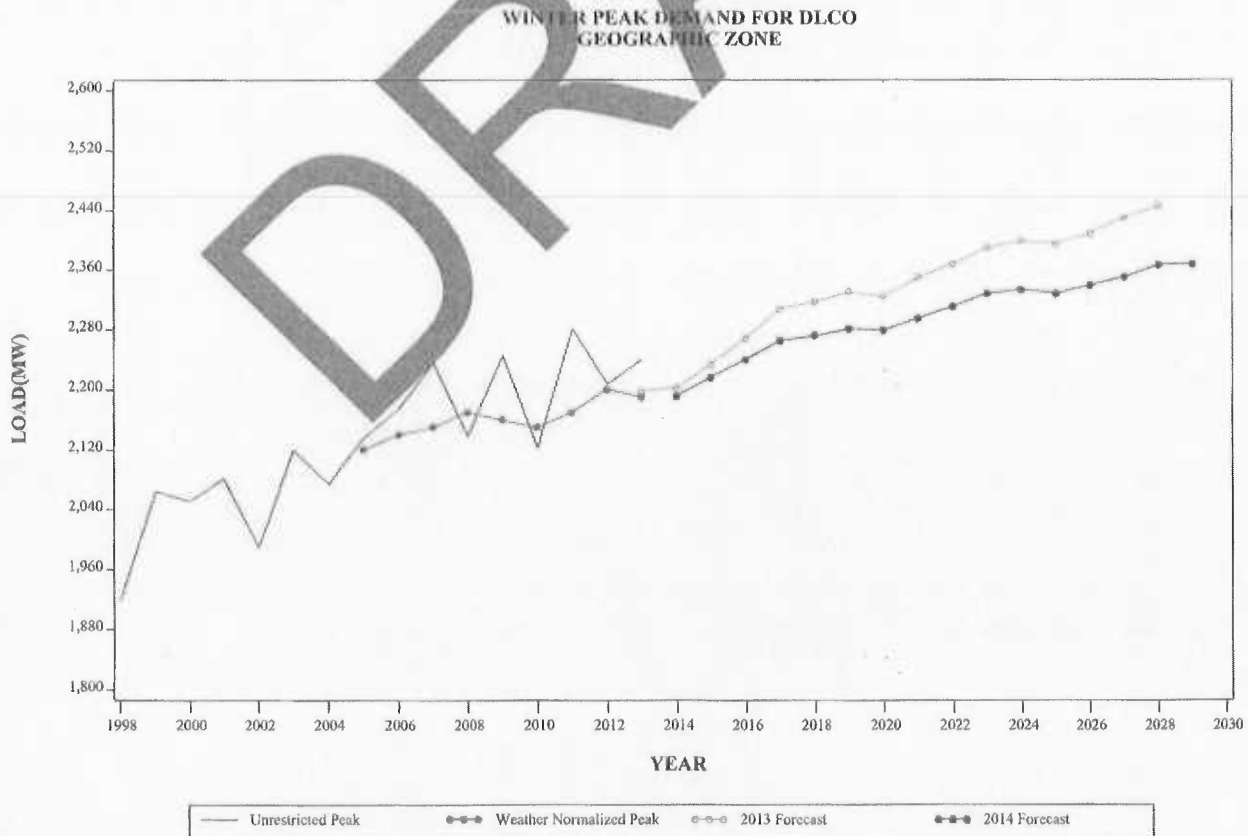
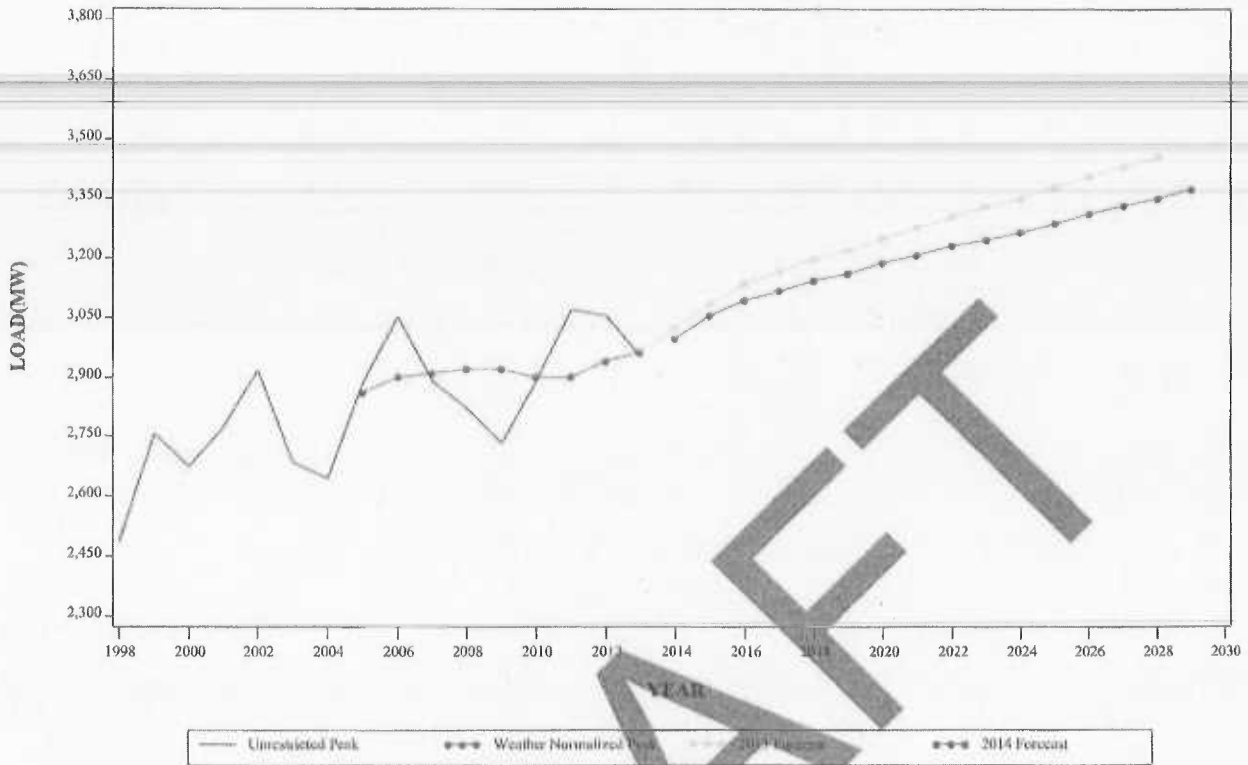
**SUMMER PEAK DEMAND FOR DEOK
GEOGRAPHIC ZONE**



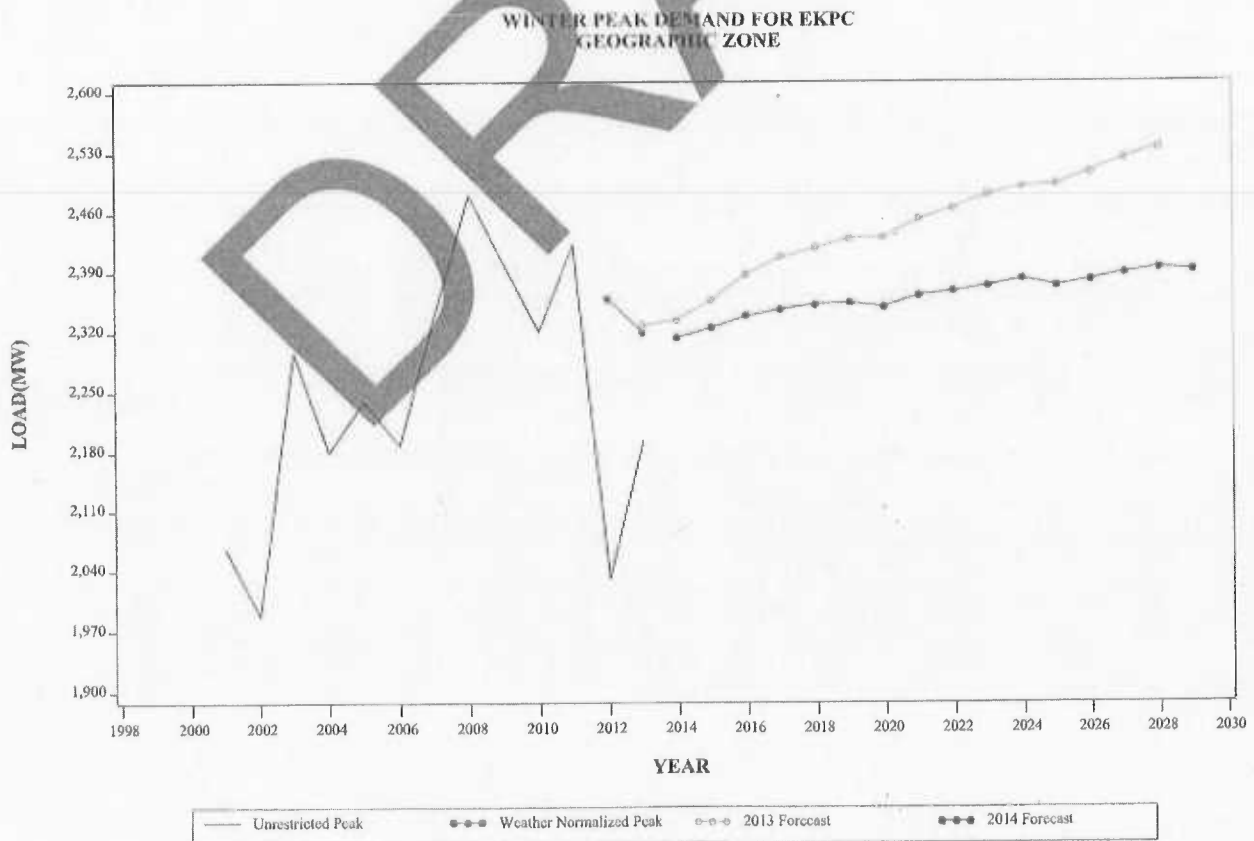
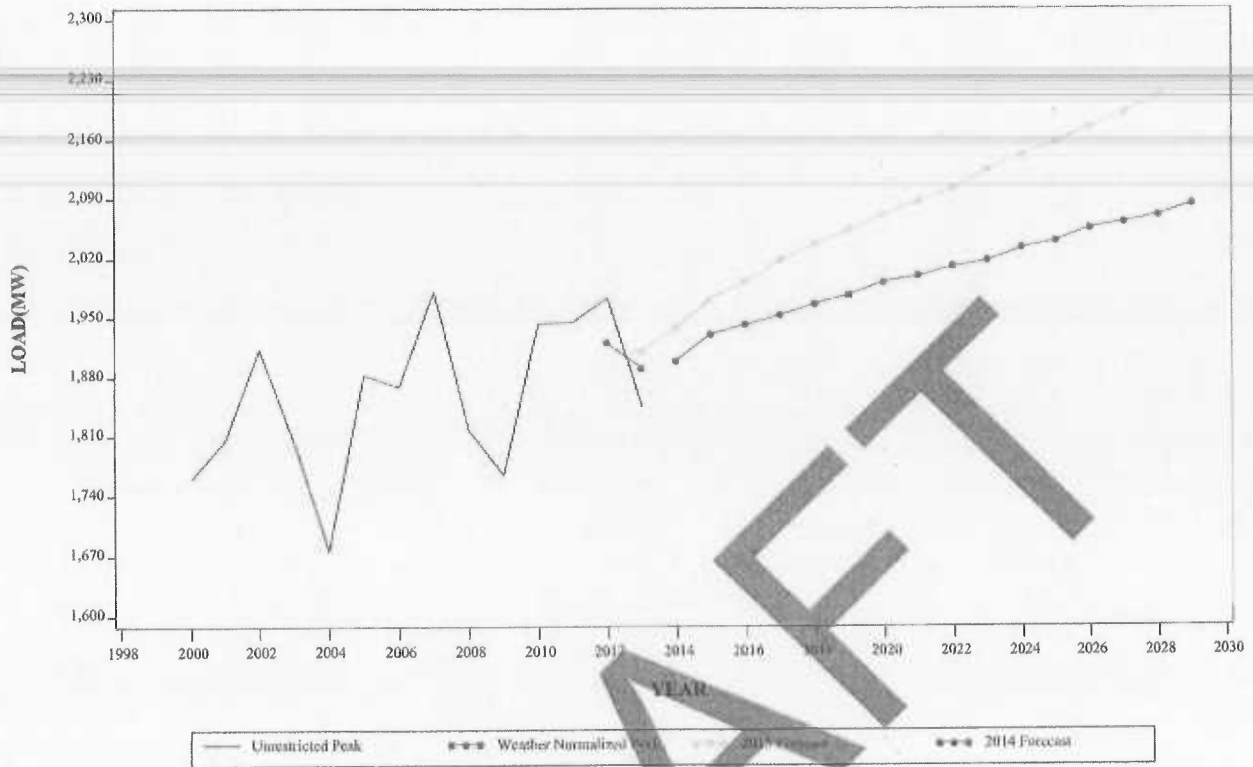
**WINTER PEAK DEMAND FOR DEOK
GEOGRAPHIC ZONE**



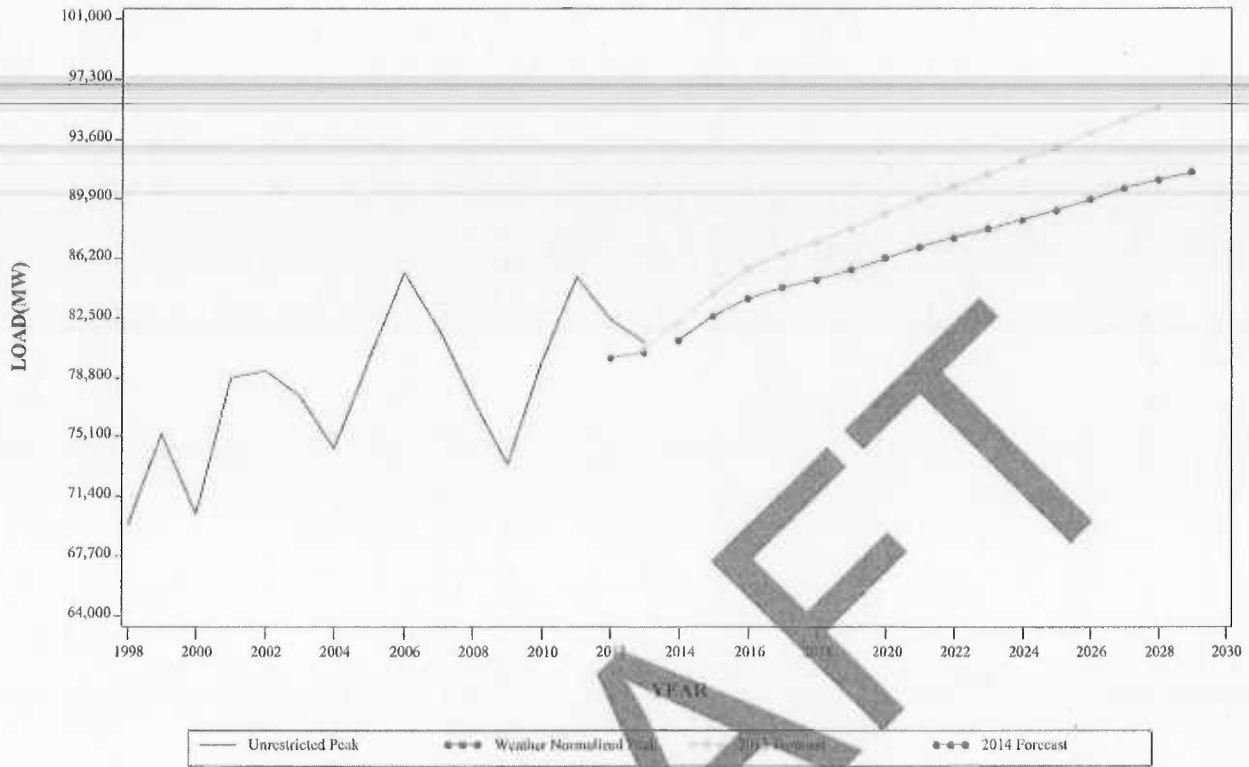
**SUMMER PEAK DEMAND FOR DLCO
GEOGRAPHIC ZONE**



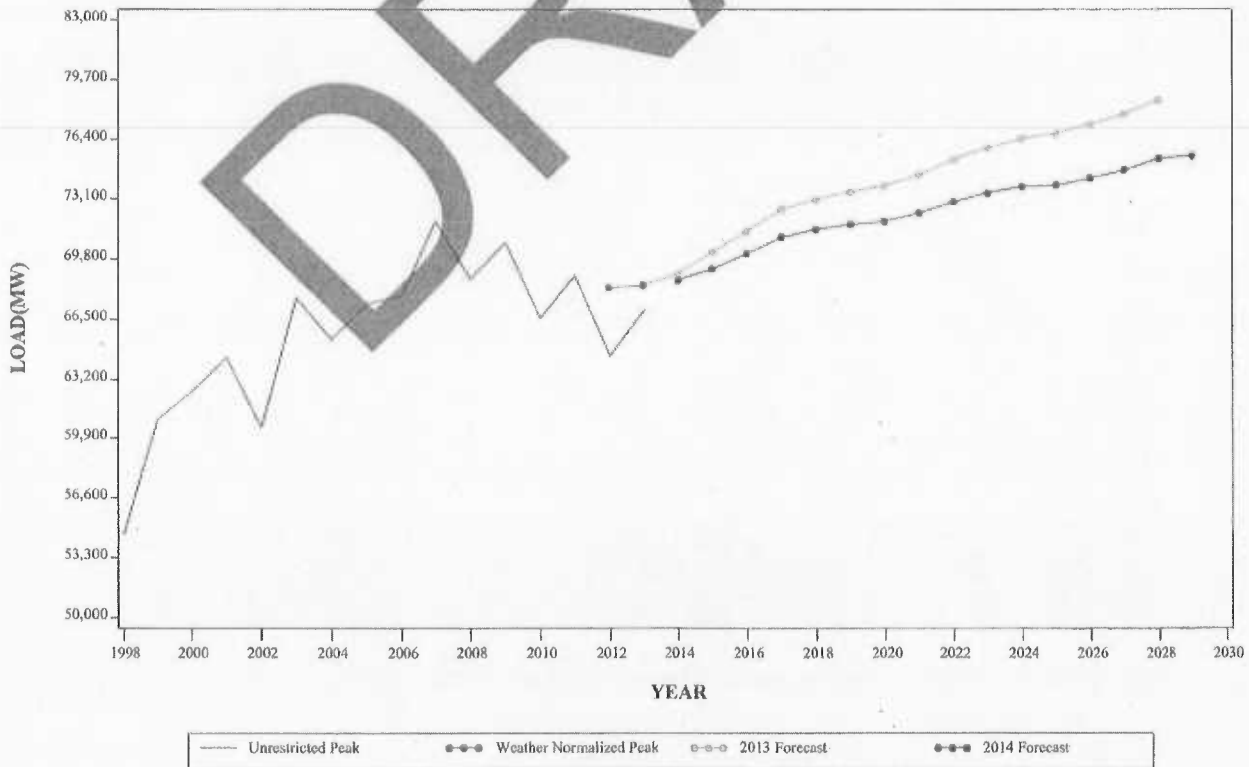
**SUMMER PEAK DEMAND FOR EKPC
GEOGRAPHIC ZONE**



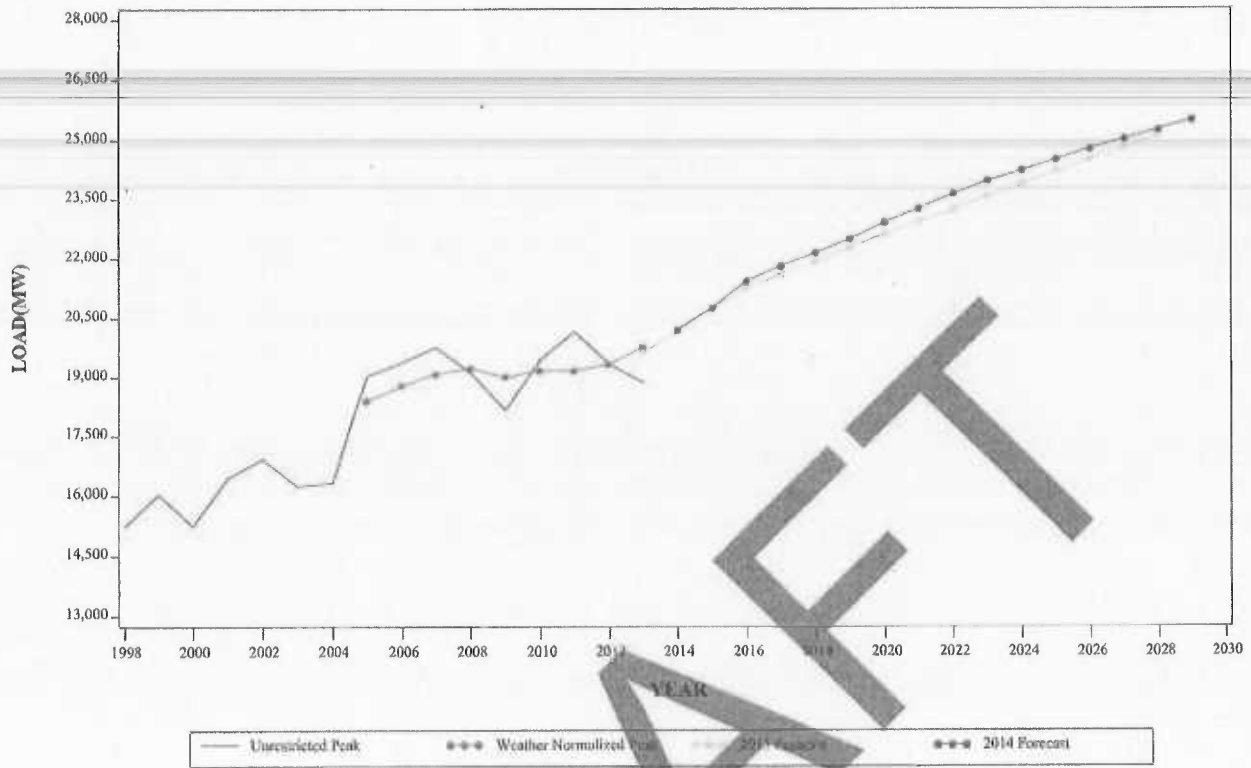
**SUMMER PEAK DEMAND FOR PJM WESTERN
GEOGRAPHIC ZONE**



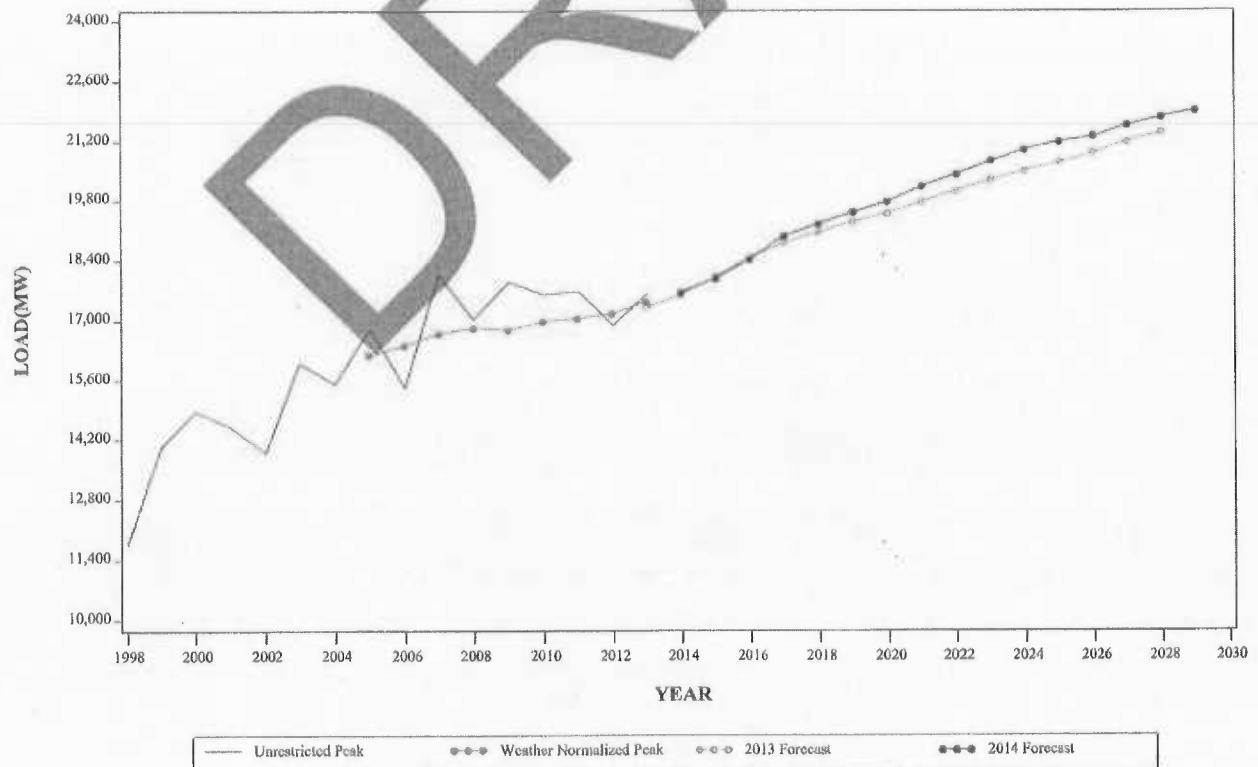
**WINTER PEAK DEMAND FOR PJM WESTERN
GEOGRAPHIC ZONE**



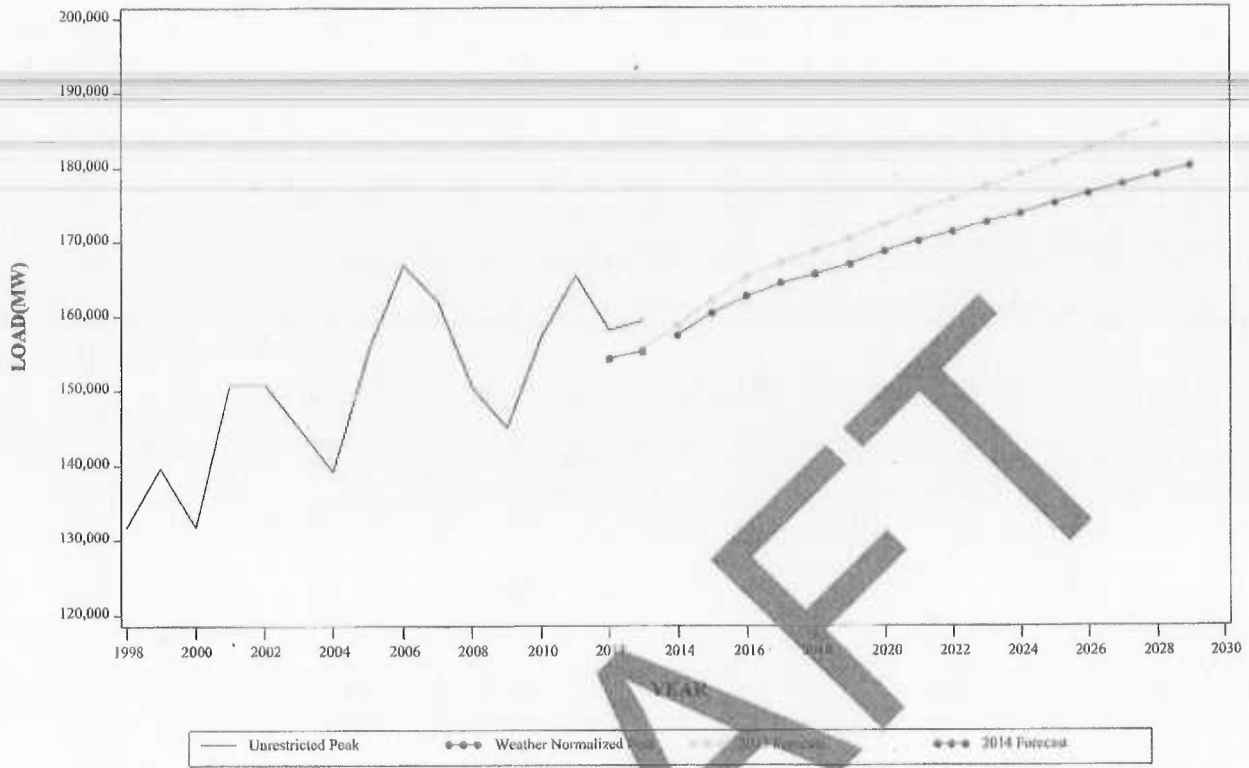
**SUMMER PEAK DEMAND FOR DOM
GEOGRAPHIC ZONE**



**WINTER PEAK DEMAND FOR DOM
GEOGRAPHIC ZONE**



**SUMMER PEAK DEMAND FOR PJM RTO
GEOGRAPHIC ZONE**



**WINTER PEAK DEMAND FOR PJM RTO
GEOGRAPHIC ZONE**

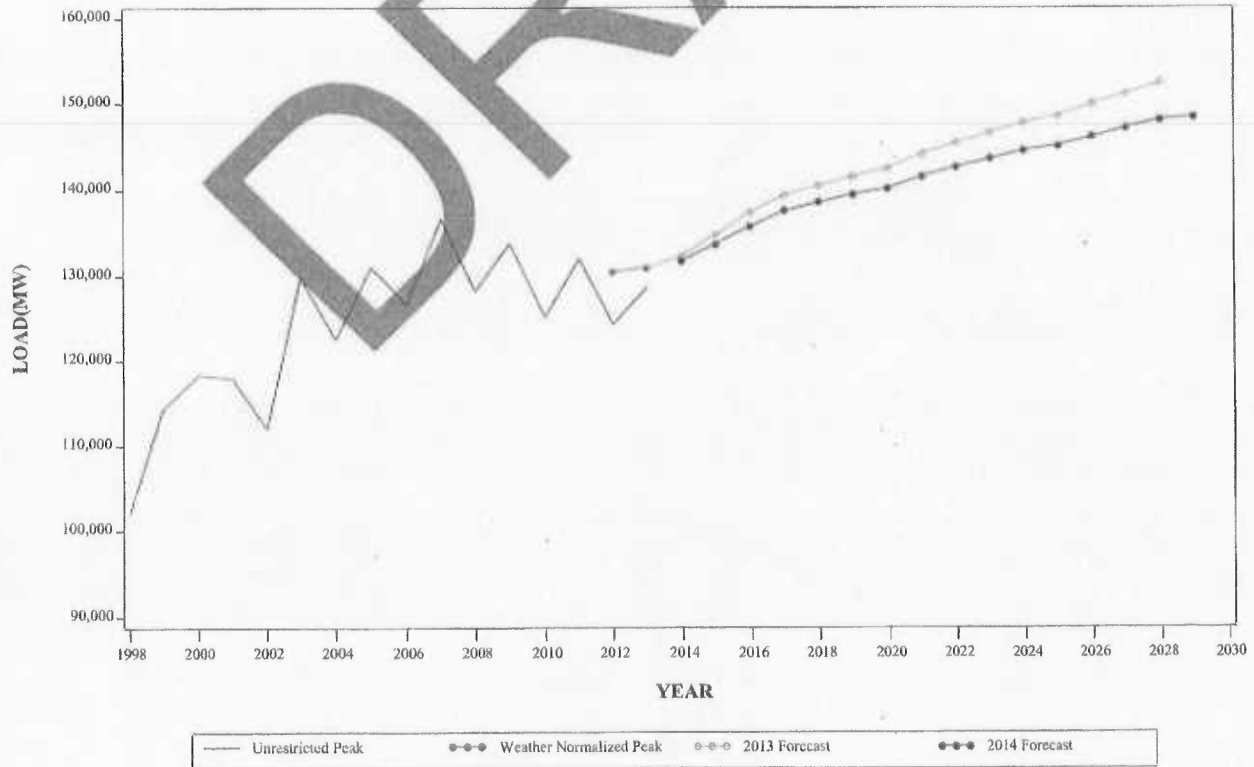


Table A-1

PJM MID-ATLANTIC REGION
 SUMMER PEAK LOAD COMPARISONS OF THE CURRENT FORECAST
 TO THE JANUARY 2013 LOAD FORECAST REPORT

INCREASE OR DECREASE OVER PRIOR FORECAST

	2014		2019		2024	
	MW	%	MW	%	MW	%
AE	(34)	-1.2%	(74)	-2.5%	(102)	-3.3%
BGE	70	1.0%	108	1.4%	3	0.0%
DPL	(37)	-0.9%	(100)	-2.2%	(164)	-3.4%
JCPL	(11)	-0.2%	(74)	-1.1%	(149)	-2.1%
METED	(27)	-0.9%	(68)	-2.0%	(151)	-3.0%
PECO	(57)	-0.6%	(151)	-2.0%	(298)	-2.9%
PENLC	(36)	-1.2%	(91)	-2.8%	(135)	-3.8%
PEPCO	(65)	-0.9%	(129)	-1.8%	(181)	-2.4%
PL	(69)	-0.9%	(175)	-2.2%	(258)	-3.1%
PS	(84)	-0.8%	(234)	-2.1%	(342)	-3.0%
RECO	(2)	-0.5%	(6)	1.4%	(9)	-2.0%
UGI	(1)	-0.5%	(1)	0.5%	(2)	-0.9%
PJM MID-ATLANTIC	(327)	0.5%	(405)	-1.5%	(1,732)	-2.6%
FE-EAST	(84)	-1.7%	(283)	-2.1%	(444)	-3.2%
PLGRP	(69)	-0.6%	(183)	-2.3%	(265)	-3.1%

Table A-1

PJM WESTERN REGION, PJM SOUTHERN REGION AND PJM RTO
 SUMMER PEAK LOAD COMPARISONS OF THE CURRENT FORECAST
 TO THE JANUARY 2013 LOAD FORECAST REPORT

INCREASE OR DECREASE OVER PRIOR FORECAST

	2014		2019		2024	
	MW	%	MW	%	MW	%
AEP	(633)	-2.6%	(1,045)	-1.4%	(1,406)	-5.2%
APS	15	0.2%	(78)	-0.8%	(184)	-1.9%
ATSI	(109)	-0.8%	(378)	-2.7%	(561)	-3.8%
COMED	(68)	-0.3%	(538)	-2.1%	(817)	-3.0%
DAYTON	(58)	-1.6%	(135)	-3.5%	(192)	-4.7%
DEOK	(37)	-0.7%	(15)	0.3%	(215)	-3.4%
DLCO	(24)	-0.8%	(44)	-1.8%	(85)	-2.5%
EKPC	(39)	-2.0%	(76)	-3.7%	(108)	-5.0%
PJM WESTERN	(1,059)	-1.3%	(2,566)	-2.9%	(3,659)	-4.0%
DOM	44	0.2%	59	1.1%	368	1.5%
PJM RTO	(1,309)	-1.3%	(1,450)	-2.0%	(5,182)	-2.9%

Table A-2

PJM MID-ATLANTIC REGION
 WINTER PEAK LOAD COMPARISONS OF THE CURRENT FORECAST
 TO THE JANUARY 2013 LOAD FORECAST REPORT

INCREASE OR DECREASE OVER PRIOR FORECAST

	13/14	18/19	23/24
	MW	MW	MW
	%	%	%
AE	(27)	(61)	(77)
BGE	(38)	163	116
DPL	(7)	(34)	(69)
JCPL	(19)	(104)	(162)
METED	(10)	(50)	(83)
PECO	(8)	(16)	(192)
PENLC	(24)	(71)	(109)
PEPCO	(31)	(88)	(128)
PL	(24)	(111)	(169)
PS	(47)	(142)	(212)
RECO	(2)	(1)	(5)
UGI	0	(3)	(2)
PJM MID-ATLANTIC	(206)	(56)	(1,056)
FE-EAST	(49)	(216)	(334)
PLGRP	(27)	(117)	(174)

Table B-1
**SUMMER PEAK LOAD (MW) AND GROWTH RATES FOR
 EACH PJM MID-ATLANTIC ZONE AND GEOGRAPHIC REGION
 2014 - 2024**

	METERED 2013	UNRESTRICTED 2013	NORMAL 2013	2014	2015	2016	2017	2018	2019	2020	2021	2022	2023	2024	Annual Growth Rate (10 yr)
AE	2,740	2,740	2,700	2,750	2,806	2,840	2,860	2,877	2,891	2,910	2,928	2,946	2,954	2,969	0.8%
BGE	6,831	7,039	7,220	7,403	7,579	7,705	7,788	7,823	7,850	7,941	7,985	8,026	8,053	8,094	0.9%
DPL	4,019	4,019	4,130	4,181	4,261	4,314	4,353	4,389	4,427	4,470	4,504	4,538	4,562	4,600	1.0%
JCPL	6,379	6,379	6,270	6,361	6,494	6,584	6,629	6,651	6,721	6,788	6,828	6,882	6,897	6,944	0.9%
METED	3,013	3,013	2,970	3,020	3,096	3,141	3,189	3,222	3,260	3,303	3,339	3,378	3,408	3,444	1.3%
PECO	8,619	8,655	8,720	8,844	9,032	9,147	9,227	9,330	9,421	9,522	9,602	9,684	9,746	9,827	1.1%
PENLC	3,088	3,088	2,910	2,966	3,030	3,088	3,168	3,203	3,246	3,292	3,332	3,372	3,404	3,441	1.5%
PEFCO	6,534	6,534	6,810	6,870	6,995	7,103	7,190	7,037	7,086	7,150	7,177	7,208	7,207	7,249	0.5%
PL	7,190	7,328	7,240	7,334	7,477	7,568	7,635	7,686	7,767	7,842	7,901	7,970	8,013	8,079	1.0%
PS	10,415	10,415	10,530	10,613	10,760	10,845	10,888	10,915	10,974	11,034	11,080	11,127	11,139	11,185	0.5%
RECO	439	439	470	473	497	430	431	432	433	436	438	438	438	439	0.4%
UGI	205	205	210	198	202	205	207	208	210	212	214	215	216	218	1.0%
DIVERSITY - MID-ATLANTIC(-) PJM MID-ATLANTIC	59,119	59,580	59,405	60,451	61,544	62,345	62,875	63,181	63,821	64,307	64,769	65,210	65,572	65,982	0.9%
FE-EAST	12,402	12,402	11,960	12,174	12,434	12,638	12,778	12,887	13,016	13,143	13,266	13,392	13,490	13,612	1.1%
PLGRP	7,393	7,532	7,410	7,507	7,639	7,742	7,822	7,873	7,950	8,015	8,083	8,150	8,210	8,274	1.0%

Notes:
 Normal 2013 and all forecast values are non-coincident as estimated by PJM staff.
 Normal 2013 and all forecast values represent unrestricted peaks, prior to reductions for load management and energy efficiency.
 All average growth rates are calculated from the first year of the forecast.

Table B-1 (Continued)

SUMMER PEAK LOAD (MW) AND GROWTH RATES FOR
EACH PJM MID-ATLANTIC ZONE AND GEOGRAPHIC REGION
2025 - 2029

	2025	2026	2027	2028	2029	Annual Growth Rate (15 Yr)
AE	2,985	3,003	3,019	3,031	3,050	0.7%
	0.5%	0.6%	0.5%	0.4%	0.6%	
BGE	8,140	8,192	8,222	8,250	8,275	0.8%
	0.6%	0.6%	0.4%	0.3%	0.5%	
DPL	4,635	4,671	4,701	4,721	4,753	0.9%
	0.8%	0.8%	0.4%	0.4%	0.7%	
JCPL	6,992	7,048	7,085	7,126	7,149	0.8%
	0.7%	0.8%	0.5%	0.6%	0.3%	
METED	3,483	3,524	3,560	3,594	3,632	1.2%
	1.1%	1.2%	1.0%	1.0%	1.1%	
PECO	9,910	9,996	10,075	10,145	10,227	1.0%
	0.8%	0.8%	0.8%	0.7%	0.8%	
PENLC	3,400	3,410	3,554	3,564	3,610	1.3%
	1.1%	1.1%	0.4%	0.3%	0.7%	
PEPCO	7,299	7,337	7,357	7,362	7,380	0.5%
	0.7%	0.5%	0.3%	0.1%	0.2%	
PL	8,146	8,111	8,270	8,319	8,368	0.9%
	0.8%	0.8%	0.7%	0.6%	0.6%	
PS	11,235	11,300	11,327	11,343	11,383	0.5%
	0.4%	0.4%	0.4%	0.1%	0.4%	
RECO	444	444	444	444	444	0.3%
	0.5%	0.2%	0.5%	0.0%	0.0%	
UG	219	221	222	224	225	0.9%
	0.5%	0.9%	0.5%	0.9%	0.4%	
DIVERSITY - MID-ATLANTIC(-)	585	640	594	522	519	
PJM MID-ATLANTIC	66,380	66,809	67,241	67,621	67,990	0.8%
	0.6%	0.6%	0.6%	0.6%	0.5%	
FE-EAST	13,726	13,835	13,956	14,070	14,186	1.0%
	0.8%	0.8%	0.9%	0.8%	0.8%	
PLGRP	8,338	8,398	8,463	8,520	8,574	0.9%
	0.8%	0.7%	0.8%	0.7%	0.6%	

Table B-1

SUMMER PEAK LOAD (MW) AND GROWTH RATES FOR EACH PJM WESTERN AND PJM SOUTHERN ZONE, GEOGRAPHIC REGION AND RTO 2014 - 2024

	METERED 2013	UNRESTRICTED 2013	NORMAL 2013	2014	2015	2016	2017	2018	2019	2020	2021	2022	2023	2024	Annual Growth Rate (10 yr)
AEP	22,859	22,947	23,660	23,557	23,982	24,220	24,358	24,517	24,667	24,850	25,011	25,153	25,255	25,414	0.8%
APS	8,678	8,682	8,640	8,838	9,024	9,147	9,217	9,252	9,353	9,449	9,521	9,597	9,651	9,722	1.0%
ATSI	13,142	13,895	13,240	13,350	13,540	13,630	13,670	13,716	13,770	13,860	13,915	13,972	13,996	14,047	0.5%
COMED	22,270	22,290	22,830	23,275	23,879	24,215	24,522	24,759	24,991	25,112	25,233	25,356	25,478	26,182	1.2%
DAYTON	3,358	3,358	3,430	3,476	3,583	3,641	3,679	3,712	3,745	3,788	3,821	3,859	3,884	3,926	1.2%
DEOK	5,109	5,109	5,520	5,597	5,704	5,747	5,791	5,820	5,874	5,942	5,966	6,009	6,030	6,079	0.8%
DLCO	2,952	2,952	2,960	2,997	3,036	3,074	3,118	3,163	3,162	3,189	3,209	3,232	3,246	3,266	0.9%
EKPC	1,845	1,845	1,890	1,899	1,920	1,943	1,963	1,966	1,977	1,992	2,000	2,011	2,018	2,033	0.7%
DIVERSITY - WESTERN(-) PJM WESTERN	79,811	80,951	80,320	81,114	82,613	83,722	84,413	84,895	85,509	86,233	86,899	87,498	88,053	88,576	0.9%
DOM	18,763	18,830	19,260	20,198	20,766	21,433	21,813	22,156	22,501	22,914	23,262	23,641	23,966	24,224	1.8%
DIVERSITY - INTERREGIONAL(-) PJM RTO	157,141	159,369	155,165	157,408	160,447	162,725	164,440	165,684	167,071	168,752	170,185	171,363	172,689	173,860	1.0%

Notes:
 Normal 2013 and all forecast values are non-coincident as estimated by PJM staff.
 Normal 2013 and all forecast values represent unrestricted peaks, prior to reductions for load management and energy efficiency.
 All average growth rates are calculated from the first year of the forecast.

Table B-1 (Continued)

SUMMER PEAK LOAD (MW) AND GROWTH RATES FOR
EACH PJM WESTERN AND PJM SOUTHERN ZONE, GEOGRAPHIC REGION AND RTO
2025 - 2029

	2025	2026	2027	2028	2029	Annual Growth Rate (15 Yr)
AEP	25,589	25,749	25,929	26,038	26,172	0.7%
APS	9,799	9,882	9,953	10,013	10,063	0.9%
ATSI	14,112	14,185	14,211	14,286	14,340	0.5%
COMED	26,438	26,717	27,028	27,090	27,293	1.1%
DAYTON	3,965	4,008	4,046	4,074	4,123	1.1%
DEOK	6,133	6,179	6,204	6,231	6,267	0.8%
DLCO	3,333	3,333	3,333	3,333	3,373	0.8%
EKPC	2,041	2,055	2,063	2,071	2,084	0.6%
DIVERSITY - WESTERN	2,190	2,217	2,159	2,072	2,243	0.8%
PJM WESTERN	88,176	89,372	90,546	91,087	91,554	0.8%
DOM	24,494	24,764	25,012	25,243	25,481	1.6%
DIVERSITY - INTERREGIONAL	4,840	4,934	4,987	4,989	4,880	0.9%
PJM RTO	175,210	176,511	177,812	178,962	180,145	0.9%

Table B-2

WINTER PEAK LOAD (MW) AND GROWTH RATES FOR EACH PJM MID-ATLANTIC ZONE AND GEOGRAPHIC REGION 2013/14 - 2023/24

	METERED 12/13	UNRESTRICTED 12/13	NORMAL 12/13	13/14	14/15	15/16	16/17	17/18	18/19	19/20	20/21	21/22	22/23	23/24	Annual Growth Rate (10 yr)
AE	1,647	1,647	1,740	1,752	1,779	1,802	1,824	1,824	1,833	1,834	1,849	1,861	1,870	1,872	0.7%
BGE	5,805	5,805	5,950	5,956	6,123	6,227	6,320	6,320	6,320	6,405	6,443	6,463	6,487	6,501	0.9%
DPL	3,406	3,406	3,370	3,383	3,435	3,482	3,510	3,544	3,566	3,579	3,613	3,635	3,661	3,682	0.9%
JCPL	3,760	3,760	3,910	3,933	4,008	4,073	4,128	4,139	4,161	4,161	4,217	4,251	4,276	4,281	0.9%
METED	2,579	2,579	2,620	2,635	2,693	2,741	2,800	2,826	2,849	2,866	2,907	2,947	2,982	3,000	1.3%
PECO	6,652	6,652	6,680	6,732	6,864	6,991	7,083	7,154	7,214	7,255	7,348	7,412	7,472	7,526	1.1%
PENLC	2,904	2,904	2,880	2,916	2,916	2,916	2,916	2,916	2,916	2,916	2,916	2,916	2,916	2,916	1.7%
PEPCO	5,246	5,246	5,440	5,479	5,513	5,513	5,513	5,692	5,729	5,749	5,791	5,825	5,859	5,890	0.7%
PL	7,114	7,114	7,310	7,351	7,460	7,573	7,658	7,711	7,763	7,794	7,872	7,934	7,988	8,036	0.9%
PS	6,579	6,579	6,880	6,877	6,965	7,050	7,118	7,142	7,168	7,142	7,207	7,250	7,278	7,298	0.6%
RECO	232	232	240	232	237	237	239	239	240	237	239	241	241	241	0.4%
UGI	203	203	203	199	202	205	207	208	209	210	212	213	215	215	0.8%
DIVERSITY - MID-ATLANTIC(-) PJM MID-ATLANTIC	45,529	45,529	46,941	47,604	48,440	49,114	49,450	49,745	50,020	50,361	50,798	51,117	51,365	51,665	0.9%
FE-EAST	9,177	9,177	9,350	9,429	9,641	9,844	10,004	10,100	10,181	10,242	10,375	10,480	10,578	10,652	1.2%
PLGRP	7,305	7,305	7,480	7,535	7,643	7,748	7,833	7,892	7,938	7,990	8,051	8,117	8,170	8,219	0.9%

Notes:
 Normal 12/13 and all forecast values are non-coincident as estimated by PJM staff.
 Normal 12/13 and all forecast values represent unrestricted peaks, prior to reductions for load management and energy efficiency.
 All average growth rates are calculated from the first year of the forecast.

Table B-2 (Continued)

WINTER PEAK LOAD (MW) AND GROWTH RATES FOR
EACH PJM MID-ATLANTIC ZONE AND GEOGRAPHIC REGION
2024/25 - 2028/29

	24/25	25/26	26/27	27/28	28/29	Annual Growth Rate (15 yr)
AE	1,872	1,882	1,890	1,904	1,910	0.5%
BGE	0.0%	0.5%	0.4%	0.7%	0.7%	0.7%
DPL	6,511	6,530	6,549	6,565	6,579	0.1%
JCPL	0.2%	0.3%	0.3%	0.2%	0.1%	0.7%
METED	3,696	3,719	3,743	3,764	3,781	0.5%
PECO	0.4%	0.6%	0.6%	0.6%	0.5%	1.2%
PENLC	4,283	4,320	4,353	4,387	4,385	0.0%
PEPCO	0.0%	0.9%	0.8%	0.3%	-0.0%	1.0%
PL	3,019	3,051	3,085	3,123	3,140	1.4%
PS	0.6%	1.1%	1.1%	1.4%	0.4%	0.6%
RECO	7,563	7,627	7,696	7,763	7,799	0.6%
UGR	0.5%	0.8%	0.9%	0.8%	0.5%	0.8%
DIVERSITY - MID-ATLANTIC(-)	3,411	3,511	3,552	3,584	3,617	0.6%
PJM MID-ATLANTIC	0.8%	1.1%	1.1%	1.3%	0.6%	0.8%
FE-EAST	5,914	5,938	5,967	6,001	6,017	0.3%
PLGRP	0.4%	0.5%	0.5%	0.6%	0.3%	0.8%
	8,070	8,174	8,189	8,250	8,279	0.5%
	0.4%	0.7%	0.8%	0.7%	0.4%	0.3%
	7,278	7,310	7,356	7,397	7,393	0.7%
	0.5%	0.5%	0.6%	0.6%	-0.1%	0.3%
	239	240	241	242	241	0.7%
	-0.8%	0.4%	0.4%	0.4%	-0.4%	0.7%
	216	218	219	220	221	0.5%
	0.5%	0.9%	0.5%	0.5%	0.5%	0.8%
DIVERSITY - MID-ATLANTIC(-)	538	682	652	605	517	0.8%
PJM MID-ATLANTIC	51,596	51,795	52,190	52,610	52,825	0.8%
FE-EAST	0.4%	0.4%	0.8%	0.8%	0.4%	1.1%
PLGRP	10,708	10,817	10,920	11,023	11,082	0.5%
	0.5%	1.0%	1.0%	0.9%	0.5%	0.8%
	8,261	8,313	8,373	8,436	8,476	0.5%
	0.5%	0.6%	0.7%	0.8%	0.5%	0.8%

Table B-2

WINTER PEAK LOAD (MW) AND GROWTH RATES FOR
EACH PJM WESTERN AND PJM SOUTHERN ZONE, GEOGRAPHIC REGION AND RTO
2013/14 - 2023/24

	METERED 12/13	UNRESTRICTED 12/13	NORMAL 12/13	13/14	14/15	15/16	16/17	17/18	18/19	19/20	20/21	21/22	22/23	23/24	Annual Growth Rate (10 yr)
AEP	22,254	22,254	22,930	23,046	23,004	23,324	23,555	23,676	23,761	23,810	24,022	24,167	24,316	24,428	0.6%
APS	8,496	8,496	8,580	8,673	8,920	9,084	9,208	9,273	9,345	9,399	9,500	9,583	9,657	9,727	1.2%
ATSI	10,360	10,360	10,650	10,628	10,694	10,752	10,835	10,835	10,841	10,829	10,877	10,936	10,967	10,960	0.3%
COMED	15,139	15,139	15,950	16,023	16,379	16,668	16,956	17,071	17,183	17,295	17,436	17,652	17,776	17,877	1.1%
DAYTON	2,856	2,856	2,850	2,853	2,925	2,944	3,028	3,049	3,065	3,076	3,112	3,142	3,168	3,188	1.1%
DEOK	4,257	4,257	4,390	4,392	4,437	4,480	4,536	4,536	4,554	4,554	4,584	4,607	4,629	4,647	0.6%
DLCO	2,241	2,241	2,190	2,192	2,211	2,241	2,266	2,273	2,282	2,280	2,296	2,311	2,329	2,334	0.6%
EKPC	2,193	2,193	2,320	2,314	2,326	2,340	2,347	2,353	2,355	2,350	2,364	2,369	2,375	2,383	0.3%
DIVERSITY - WESTERN(-) PJM WESTERN	67,006	67,006	68,310	68,310	69,240	70,991	71,439	71,439	71,716	71,871	72,317	72,943	73,412	73,785	0.7%
DOM	17,623	17,623	17,400	17,657	17,976	18,432	18,984	19,258	19,556	19,784	20,126	20,408	20,727	20,997	1.7%
DIVERSITY - INTERREGIONAL(-) PJM RTO	128,593	128,593	135,540	131,719	133,630	135,706	137,558	138,554	139,409	140,139	141,519	142,638	143,621	144,497	0.9%

Notes:
Normal 12/13 and all forecast values are non-coincident as estimated by PJM staff.
Normal 12/13 and all forecast values represent unrestricted peaks, prior to reductions for load management and energy efficiency.
All average growth rates are calculated from the first year of the forecast.

Table B-2 (Continued)

WINTER PEAK LOAD (MW) AND GROWTH RATES FOR
EACH PJM WESTERN AND PJM SOUTHERN ZONE, GEOGRAPHIC REGION AND RTO
2024/25 - 2028/29

	24/25	25/26	26/27	27/28	28/29	Annual Growth Rate (15 Yr)
AEP	24,468	24,603	24,780	24,947	25,073	0.6%
APS	9,786	9,867	9,949	10,033	10,073	1.0%
ATSI	10,945	10,979	11,003	11,068	11,012	0.2%
COMED	17,923	18,075	18,209	18,393	18,422	0.3%
DAYTON	3,202	3,233	3,262	3,295	3,312	1.0%
DEOK	4,651	4,672	4,693	4,717	4,725	0.5%
DLCO	2,339	2,346	2,351	2,367	2,368	0.5%
EKPC	2,375	2,387	2,396	2,396	2,393	0.2%
DIVERSITY - WESTERN(-)	1,820	1,844	1,930	1,910	1,868	0.6%
PJM WESTERN	73,859	74,353	74,707	75,307	75,472	0.6%
DOM	21,174	21,308	21,567	21,754	21,901	1.4%
DIVERSITY - INTERNACIONAL	1,593	1,222	1,350	1,570	1,775	0.8%
PJM RTO	145,036	146,133	147,114	148,101	148,423	0.4%

Table B-3

SPRING (APRIL) PEAK LOAD (MW) FOR
EACH PJM MID-ATLANTIC ZONE AND GEOGRAPHIC REGION
2014 - 2029

	2014	2015	2016	2017	2018	2019	2020	2021	2022	2023	2024	2025	2026	2027	2028	2029
AE	1,503	1,533	1,560	1,578	1,592	1,599	1,609	1,645	1,640	1,653	1,683	1,688	1,696	1,701	1,687	1,693
BGE	4,970	5,116	5,201	5,243	5,297	5,306	5,367	5,449	5,422	5,467	5,478	5,501	5,553	5,595	5,548	5,578
DPL	2,665	2,724	2,756	2,775	2,801	2,821	2,861	2,906	2,904	2,916	2,957	2,976	3,008	3,037	3,019	3,018
JCPL	3,371	3,460	3,477	3,495	3,558	3,584	3,648	3,780	3,777	3,827	3,823	3,850	3,910	3,939	3,802	3,838
METED	2,296	2,361	2,401	2,419	2,456	2,474	2,523	2,584	2,585	2,587	2,632	2,678	2,716	2,748	2,727	2,752
PECO	5,737	5,915	5,979	6,017	6,118	6,167	6,305	6,421	6,387	6,376	6,539	6,597	6,696	6,770	6,667	6,739
PENLC	2,555	2,658	2,714	2,765	2,808	2,844	2,900	2,958	2,965	2,994	3,056	3,069	3,125	3,166	3,179	3,204
PEPCO	4,488	4,552	4,574	4,584	4,633	4,651	4,705	4,758	4,746	4,718	4,730	4,800	4,853	4,890	4,831	4,879
PL	5,890	6,010	6,082	6,120	6,204	6,246	6,331	6,389	6,397	6,410	6,516	6,552	6,635	6,705	6,672	6,733
PS	6,223	6,336	6,368	6,350	6,433	6,439	6,511	6,618	6,543	6,516	6,687	6,670	6,702	6,761	6,645	6,711
RECO	219	223	222	222	222	222	226	228	225	224	225	226	229	230	226	225
UGI	155	159	161	162	164	165	167	170	169	170	174	175	177	178	176	177
DIVERSITY - MID-ATLANTIC(-)	1,674	1,957	1,885	1,713	2,070	2,017	2,353	1,836	1,695	1,920	1,920	1,555	1,981	2,251	1,874	2,026
PJM MID-ATLANTIC	38,398	39,090	39,610	40,017	40,216	40,500	41,156	41,543	41,801	41,898	42,609	43,227	43,319	43,469	43,305	43,521
FE-EAST	7,876	8,103	8,224	8,342	8,462	8,551	8,700	8,838	8,848	8,897	9,121	9,195	9,315	9,394	9,329	9,458
PLGRP	5,896	5,990	6,064	6,116	6,199	6,261	6,404	6,344	6,383	6,416	6,535	6,575	6,606	6,666	6,669	6,753

Table B-3

SPRING (APRIL) PEAK LOAD (MW) FOR
EACH PJM WESTERN AND PJM SOUTHERN ZONE, GEOGRAPHIC REGION AND RTO
2014 - 2029

	2014	2015	2016	2017	2018	2019	2020	2021	2022	2023	2024	2025	2026	2027	2028	2029
AEP	18,500	18,841	19,051	19,192	19,337	19,368	19,536	19,701	19,760	19,777	19,927	19,990	20,180	20,350	20,405	20,542
APS	7,097	7,264	7,373	7,431	7,504	7,556	7,639	7,746	7,742	7,756	7,870	7,914	8,017	8,095	8,072	8,127
ATSI	9,479	9,617	9,655	9,680	9,729	9,711	9,821	10,022	9,815	9,825	9,953	9,959	10,049	10,195	9,975	10,020
COMED	14,147	14,633	14,881	15,010	15,307	15,413	15,737	16,062	15,650	16,045	16,452	16,569	16,882	17,124	16,905	17,243
DAYTON	2,385	2,477	2,523	2,557	2,586	2,600	2,643	2,687	2,740	2,700	2,749	2,775	2,818	2,853	2,854	2,888
DEOK	3,756	3,843	3,843	3,867	3,916	3,923	3,989	4,044	4,002	4,010	4,082	4,101	4,160	4,190	4,133	4,179
DLCO	2,036	2,095	2,104	2,094	2,142	2,156	2,191	2,219	2,198	2,181	2,242	2,244	2,276	2,301	2,255	2,300
EKPC	1,534	1,551	1,554	1,555	1,562	1,564	1,576	1,587	1,581	1,578	1,594	1,591	1,605	1,610	1,601	1,602
DIVERSITY - WESTERN(-)	2,368	2,746	3,350	3,283	3,364	3,135	3,216	3,434	3,378	3,408	3,383	2,801	3,481	3,657	3,729	3,835
PJM WESTERN	56,566	57,575	57,634	58,103	58,719	59,156	59,916	60,677	60,229	60,470	61,486	62,342	62,506	63,061	62,471	63,066
DOM	14,026	14,520	14,994	15,259	15,635	15,802	16,267	16,657	16,766	16,999	17,399	17,503	17,780	18,012	17,986	18,212
DIVERSITY - INTERREGIONAL(-)	2,620	1,929	1,914	2,111	2,064	1,954	2,040	2,089	1,975	2,072	1,654	2,506	1,764	2,077	2,388	1,937
PJM RTO	106,370	109,256	110,324	111,268	112,506	113,504	115,330	117,115	117,061	117,295	119,840	120,566	121,841	122,465	121,374	122,862

Table B-4

FALL (OCTOBER) PEAK LOAD (MW) FOR
EACH PJM MID-ATLANTIC ZONE AND GEOGRAPHIC REGION
2014 - 2029

	2014	2015	2016	2017	2018	2019	2020	2021	2022	2023	2024	2025	2026	2027	2028	2029
AE	1,559	1,584	1,605	1,626	1,640	1,652	1,658	1,660	1,679	1,695	1,708	1,717	1,727	1,724	1,749	1,765
BGE	4,793	4,891	4,970	5,069	5,101	5,131	5,134	5,139	5,205	5,257	5,313	5,335	5,341	5,276	5,373	5,421
DPL	2,638	2,673	2,693	2,742	2,776	2,802	2,815	2,816	2,861	2,894	2,928	2,946	2,960	2,949	2,997	3,033
JCPL	3,484	3,538	3,566	3,624	3,713	3,711	3,726	3,715	3,755	3,812	3,884	3,893	3,912	3,884	3,953	4,036
METED	2,197	2,239	2,281	2,313	2,343	2,372	2,392	2,409	2,450	2,500	2,523	2,548	2,572	2,576	2,631	2,664
PECO	5,743	5,825	5,909	6,008	6,109	6,172	6,188	6,221	6,319	6,399	6,480	6,528	6,579	6,568	6,684	6,761
PENLC	2,556	2,625	2,705	2,752	2,792	2,829	2,845	2,873	2,943	2,980	3,021	3,036	3,065	3,090	3,152	3,185
PEPCO	4,560	4,591	4,586	4,643	4,688	4,716	4,733	4,719	4,738	4,794	4,844	4,855	4,865	4,840	4,895	4,944
PL	5,718	5,805	5,896	5,949	5,993	6,043	6,085	6,110	6,174	6,255	6,323	6,365	6,408	6,396	6,488	6,551
PS	6,625	6,646	6,635	6,728	6,811	6,849	6,844	6,789	6,816	6,888	6,982	7,003	6,987	6,943	7,022	7,114
RECO	244	244	242	245	249	248	247	245	245	249	252	251	250	247	250	254
UGI	155	157	160	162	163	164	165	165	169	170	171	172	173	172	176	177
DIVERSITY - MID-ATLANTIC(-)	1,358	1,309	1,320	1,284	1,376	1,411	1,441	1,303	1,367	1,217	1,358	1,334	1,268	1,336	1,283	1,391
PJM MID-ATLANTIC	38,914	39,509	39,928	40,577	41,002	41,375	41,577	41,565	42,132	42,664	43,073	43,315	43,471	43,329	44,087	44,514
FE-EAST	8,027	8,203	8,337	8,464	8,581	8,666	8,721	8,797	8,965	9,098	9,218	9,286	9,356	9,318	9,532	9,657
PLGRP	5,843	5,931	6,026	6,095	6,141	6,176	6,211	6,257	6,351	6,404	6,463	6,497	6,539	6,552	6,642	6,703

Table B-4

FALL (OCTOBER) PEAK LOAD (MW) FOR
EACH PJM WESTERN AND PJM SOUTHERN ZONE, GEOGRAPHIC REGION AND RTO
2014 - 2029

	2014	2015	2016	2017	2018	2019	2020	2021	2022	2023	2024	2025	2026	2027	2028	2029
AEP	17,856	18,034	18,222	18,417	18,538	18,611	18,616	18,639	18,858	19,077	19,111	19,185	19,231	19,259	19,537	19,796
APS	6,791	6,904	7,028	7,083	7,136	7,207	7,255	7,287	7,402	7,503	7,542	7,578	7,638	7,633	7,763	7,842
ATSI	9,147	9,189	9,257	9,298	9,325	9,369	9,361	9,350	9,457	9,538	9,571	9,588	9,605	9,507	9,691	9,713
COMED	14,259	14,603	14,832	15,074	15,296	15,462	15,619	15,743	15,855	16,041	16,472	16,620	16,710	16,749	16,969	17,230
DAYTON	2,379	2,437	2,482	2,518	2,546	2,573	2,589	2,600	2,647	2,683	2,727	2,751	2,774	2,773	2,835	2,877
DEOK	3,754	3,795	3,831	3,868	3,914	3,933	3,937	3,946	3,990	4,024	4,066	4,075	4,090	4,091	4,150	4,197
DLCO	1,969	1,995	2,008	2,035	2,054	2,071	2,080	2,077	2,102	2,120	2,144	2,154	2,161	2,155	2,187	2,209
EKPC	1,539	1,539	1,551	1,553	1,561	1,564	1,563	1,563	1,580	1,586	1,588	1,585	1,590	1,579	1,599	1,605
DIVERSITY - WESTERN(-)	1,781	1,903	1,980	1,916	2,015	2,057	2,106	2,080	2,107	2,110	2,196	2,233	2,216	2,265	2,246	2,474
PJM WESTERN	55,913	56,593	57,231	57,930	58,355	58,733	58,914	59,008	59,908	60,479	61,021	61,303	61,583	61,481	62,485	62,995
DOM	14,036	14,358	14,934	15,233	15,566	15,833	16,086	16,339	16,682	16,975	17,203	17,367	17,526	17,656	17,906	18,192
DIVERSITY - INTERREGIONAL(-)	1,811	1,728	1,663	1,845	1,974	2,006	2,007	2,051	2,060	2,130	1,996	2,041	2,144	2,360	2,241	2,197
PJM RTO	107,052	108,732	110,430	111,895	112,949	113,855	114,570	114,853	115,782	117,988	119,301	119,944	120,436	120,106	122,237	123,504

Table B-5

MONTHLY PEAK FORECAST (MW) FOR EACH PJM WESTERN AND PJM SOUTHERN ZONE, GEOGRAPHIC REGION AND RTO

AEP	APS	ATSI	COMED	DAYTON	DEOK	DLCO	EKPC	WESTERN		DOM	INTER REGION DIVERSITY	PJM RTO
								DIVERSITY	PJM WESTERN			
Jan 2014	23,046	8,673	16,023	2,853	4,392	2,192	2,314	1,515	68,700	17,657	3,799	131,719
Feb 2014	22,236	8,345	15,497	2,754	4,222	2,117	2,200	1,489	66,761	16,916	3,895	126,351
Mar 2014	20,011	7,635	14,232	2,502	3,816	2,006	1,805	1,444	60,393	14,897	3,598	113,955
Apr 2014	18,500	7,097	14,147	2,385	3,756	2,036	1,534	2,368	54,466	14,026	4,154	106,370
May 2014	19,335	7,083	16,860	2,702	4,414	2,360	1,480	2,443	62,605	16,053	5,284	119,349
Jun 2014	22,423	8,385	21,391	3,238	5,307	2,835	1,786	2,274	75,374	18,741	5,225	146,629
Jul 2014	23,557	8,838	23,275	3,476	5,597	2,997	1,899	1,875	81,114	20,198	6,254	157,408
Aug 2014	22,966	8,546	22,246	3,360	5,461	2,878	1,877	1,819	78,331	19,505	6,551	150,320
Sep 2014	20,787	7,778	19,269	3,027	4,947	2,607	1,734	1,889	69,553	17,279	5,670	133,143
Oct 2014	17,856	6,791	14,259	2,379	3,754	1,969	1,525	1,783	55,913	14,036	3,350	107,052
Nov 2014	19,002	7,293	14,421	2,470	3,770	1,993	1,771	1,889	59,055	14,037	2,659	112,394
Dec 2014	21,798	8,479	16,379	2,803	4,297	2,202	2,141	2,316	67,398	16,785	3,709	128,736
AEP	APS	ATSI	COMED	DAYTON	DEOK	DLCO	EKPC	DIVERSITY	WESTERN	DOM	DIVERSITY	PJM RTO
Jan 2015	23,004	8,920	16,286	2,925	4,437	2,211	2,326	1,506	69,240	17,976	3,516	133,630
Feb 2015	22,206	8,614	15,789	2,827	4,267	2,146	2,231	1,513	67,005	17,237	3,780	128,449
Mar 2015	20,404	7,836	14,628	2,584	3,881	2,047	1,537	1,740	61,497	15,398	2,973	116,989
Apr 2015	18,841	7,264	14,633	2,477	3,843	2,093	1,551	2,746	57,575	14,520	3,480	109,256
May 2015	19,574	7,176	17,212	2,901	4,479	2,346	1,494	2,479	62,947	16,450	5,051	121,505
Jun 2015	22,872	8,582	22,031	3,261	5,014	2,897	1,821	2,425	71,432	19,314	5,620	149,709
Jul 2015	23,982	9,024	23,874	3,583	5,704	3,056	1,930	2,085	82,613	20,766	6,406	160,447
Aug 2015	23,360	8,684	22,600	3,462	5,050	2,925	1,907	1,995	79,620	20,036	6,761	152,936
Sep 2015	21,310	7,987	19,821	3,142	5,050	2,665	1,781	2,112	71,172	17,823	5,361	136,681
Oct 2015	18,034	6,904	14,603	2,317	3,795	1,995	1,539	1,903	56,593	14,358	3,267	108,732
Nov 2015	19,365	7,472	14,780	2,452	3,841	2,025	1,791	1,163	60,317	14,588	2,687	115,160
Dec 2015	22,188	8,656	16,665	2,869	4,349	2,230	2,163	1,451	68,355	17,270	3,731	131,174
AEP	APS	ATSI	COMED	DAYTON	DEOK	DLCO	EKPC	DIVERSITY	WESTERN	DOM	DIVERSITY	PJM RTO
Jan 2016	23,324	9,084	17,752	3,183	4,480	2,241	2,340	1,648	70,091	18,432	3,597	135,706
Feb 2016	22,537	8,782	16,515	2,866	4,309	2,169	2,242	1,489	68,006	17,743	4,059	130,760
Mar 2016	20,648	7,985	16,055	2,647	3,919	2,068	1,830	2,263	61,845	15,969	3,130	118,817
Apr 2016	19,051	7,373	14,989	2,523	3,843	2,104	1,554	3,350	57,634	14,994	3,468	110,324
May 2016	19,951	7,390	14,781	2,871	4,552	2,436	1,507	2,660	64,254	17,114	5,456	124,142
Jun 2016	23,357	8,764	21,492	3,451	5,488	2,950	1,840	2,600	78,803	20,038	6,073	152,372
Jul 2016	24,220	9,147	24,245	3,641	5,747	3,094	1,942	1,944	83,722	21,433	6,717	162,725
Aug 2016	23,814	8,884	23,348	3,549	5,656	2,987	1,930	2,337	81,007	20,763	6,934	156,022
Sep 2016	21,379	8,043	20,095	3,178	5,084	2,688	1,788	1,882	71,866	18,385	5,930	137,920
Oct 2016	18,222	7,028	14,832	2,482	3,831	2,008	1,551	1,980	57,231	14,934	3,214	110,430
Nov 2016	19,574	7,618	15,083	2,609	3,881	2,052	1,803	1,083	61,245	15,168	2,836	117,228
Dec 2016	22,484	8,809	16,956	2,936	4,408	2,266	2,169	1,472	69,395	17,894	4,097	133,264

Table B-6

MONTHLY PEAK FORECAST (MW) FOR
FE-EAST AND PLGRP

FE_EAST PLGRP

Jan 2014	9,429	7,535
Feb 2014	9,051	7,235
Mar 2014	8,344	6,464
Apr 2014	7,876	5,896
May 2014	9,060	5,976
Jun 2014	11,154	7,061
Jul 2014	12,174	7,507
Aug 2014	11,385	7,248
Sep 2014	10,038	6,555
Oct 2014	8,027	5,443
Nov 2014	8,356	6,378
Dec 2014	9,486	7,246

FE_EAST PLGRP

Jan 2015	9,641	7,643
Feb 2015	9,291	7,359
Mar 2015	8,500	7,110
Apr 2015	7,103	5,940
May 2015	9,353	6,064
Jun 2015	12,327	7,210
Jul 2015	13,331	7,639
Aug 2015	11,456	7,378
Sep 2015	10,274	6,700
Oct 2015	8,234	5,931
Nov 2015	8,994	6,472
Dec 2015	9,730	7,404

FE_EAST PLGRP

Jan 2016	9,844	7,748
Feb 2016	9,527	7,502
Mar 2016	8,775	6,694
Apr 2016	8,224	6,064
May 2016	9,487	6,182
Jun 2016	11,696	7,334
Jul 2016	12,638	7,742
Aug 2016	11,919	7,517
Sep 2016	10,449	6,779
Oct 2016	8,337	6,026
Nov 2016	8,780	6,601
Dec 2016	9,915	7,495

Table B-7

PJM MID-ATLANTIC REGION LOAD MANAGEMENT
PLACED UNDER PJM COORDINATION - SUMMER (MW)

	2014	2015	2016	2017	2018	2019	2020	2021	2022	2023	2024	2025	2026	2027	2028	2029
AE																
CONTRACTUALLY INTERRUPTIBLE	165	158	124	124	124	124	124	124	124	124	124	124	124	124	124	124
DIRECT CONTROL	42	42	42	42	42	42	42	42	42	42	42	42	42	42	42	42
TOTAL LOAD MANAGEMENT	207	200	166	166	166	166	166	166	166	166	166	166	166	166	166	166
BGE																
CONTRACTUALLY INTERRUPTIBLE	854	664	465	465	465	465	465	465	465	465	465	465	465	465	465	465
DIRECT CONTROL	435	435	435	435	435	435	435	435	435	435	435	435	435	435	435	435
TOTAL LOAD MANAGEMENT	1,289	1,099	900	900	900	900	900	900	900	900	900	900	900	900	900	900
DPL																
CONTRACTUALLY INTERRUPTIBLE	376	397	392	392	392	392	392	392	392	392	392	392	392	392	392	392
DIRECT CONTROL	30	30	30	30	30	30	30	30	30	30	30	30	30	30	30	30
TOTAL LOAD MANAGEMENT	406	427	422	422	422	422	422	422	422	422	422	422	422	422	422	422
JCPL																
CONTRACTUALLY INTERRUPTIBLE	427	342	214	214	214	214	214	214	214	214	214	214	214	214	214	214
DIRECT CONTROL	0	0	0	0	0	0	0	0	0	0	0	0	0	0	0	0
TOTAL LOAD MANAGEMENT	427	342	214	214	214	214	214	214	214	214	214	214	214	214	214	214
METED																
CONTRACTUALLY INTERRUPTIBLE	386	337	301	301	301	301	301	301	301	301	301	301	301	301	301	301
DIRECT CONTROL	0	0	0	0	0	0	0	0	0	0	0	0	0	0	0	0
TOTAL LOAD MANAGEMENT	386	337	301	301	301	301	301	301	301	301	301	301	301	301	301	301
PECO																
CONTRACTUALLY INTERRUPTIBLE	801	775	510	510	510	510	510	510	510	510	510	510	510	510	510	510
DIRECT CONTROL	0	0	0	0	0	0	0	0	0	0	0	0	0	0	0	0
TOTAL LOAD MANAGEMENT	801	775	510	510	510	510	510	510	510	510	510	510	510	510	510	510
PENLC																
CONTRACTUALLY INTERRUPTIBLE	415	408	408	408	408	408	408	408	408	408	408	408	408	408	408	408
DIRECT CONTROL	7	7	7	7	7	7	7	7	7	7	7	7	7	7	7	7
TOTAL LOAD MANAGEMENT	422	523	415	415	415	415	415	415	415	415	415	415	415	415	415	415

Notes:
Forecast represents the amount of Demand Resources cleared in RPM auctions.
Winter load management is equal to Contractually Interruptible.

Table B-7 (Continued)

PJM MID-ATLANTIC REGION LOAD MANAGEMENT
PLACED UNDER PJM COORDINATION - SUMMER (MW)

	2014	2015	2016	2017	2018	2019	2020	2021	2022	2023	2024	2025	2026	2027	2028	2029
PEPCO																
CONTRACTUALLY INTERRUPTIBLE	841	799	603	603	603	603	603	603	603	603	603	603	603	603	603	603
DIRECT CONTROL	35	35	35	35	35	35	35	35	35	35	35	35	35	35	35	35
TOTAL LOAD MANAGEMENT	876	834	638	638	638	638	638	638	638	638	638	638	638	638	638	638
PL																
CONTRACTUALLY INTERRUPTIBLE	1,256	1,114	959	959	959	959	959	959	959	959	959	959	959	959	959	959
DIRECT CONTROL	0	0	0	0	0	0	0	0	0	0	0	0	0	0	0	0
TOTAL LOAD MANAGEMENT	1,256	1,114	959	959	959	959	959	959	959	959	959	959	959	959	959	959
PS																
CONTRACTUALLY INTERRUPTIBLE	866	683	522	522	522	522	522	522	522	522	522	522	522	522	522	522
DIRECT CONTROL	84	84	84	84	84	84	84	84	84	84	84	84	84	84	84	84
TOTAL LOAD MANAGEMENT	950	767	606	606	606	606	606	606	606	606	606	606	606	606	606	606
RECO																
CONTRACTUALLY INTERRUPTIBLE	30	20	10	10	10	10	10	10	10	10	10	10	10	10	10	10
DIRECT CONTROL	0	0	0	0	0	0	0	0	0	0	0	0	0	0	0	0
TOTAL LOAD MANAGEMENT	30	20	10	10	10	10	10	10	10	10	10	10	10	10	10	10
UGI																
CONTRACTUALLY INTERRUPTIBLE	0	0	0	0	0	0	0	0	0	0	0	0	0	0	0	0
DIRECT CONTROL	0	0	0	0	0	0	0	0	0	0	0	0	0	0	0	0
TOTAL LOAD MANAGEMENT	0	0	0	0	0	0	0	0	0	0	0	0	0	0	0	0
PJM MID-ATLANTIC																
CONTRACTUALLY INTERRUPTIBLE	6,417	5,895	4,508	4,508	4,508	4,508	4,508	4,508	4,508	4,508	4,508	4,508	4,508	4,508	4,508	4,508
DIRECT CONTROL	633	633	633	633	633	633	633	633	633	633	633	633	633	633	633	633
TOTAL LOAD MANAGEMENT	7,050	6,438	5,141	5,141	5,141	5,141	5,141	5,141	5,141	5,141	5,141	5,141	5,141	5,141	5,141	5,141

Table B-7

PJM WESTERN REGION AND PJM SOUTHERN REGION LOAD MANAGEMENT
PLACED UNDER PJM COORDINATION - SUMMER (MW)

	2014	2015	2016	2017	2018	2019	2020	2021	2022	2023	2024	2025	2026	2027	2028	2029
AEP																
CONTRACTUALLY INTERRUPTIBLE	2,013	1,897	1,738	1,738	1,738	1,738	1,738	1,738	1,738	1,738	1,738	1,738	1,738	1,738	1,738	1,738
DIRECT CONTROL	24	24	24	24	24	24	24	24	24	24	24	24	24	24	24	24
TOTAL LOAD MANAGEMENT	2,037	1,921	1,762	1,762	1,762	1,762	1,762	1,762	1,762	1,762	1,762	1,762	1,762	1,762	1,762	1,762
APS																
CONTRACTUALLY INTERRUPTIBLE	864	923	657	657	657	657	657	657	657	657	657	657	657	657	657	657
DIRECT CONTROL	1	1	1	1	1	1	1	1	1	1	1	1	1	1	1	1
TOTAL LOAD MANAGEMENT	865	924	658	658	658	658	658	658	658	658	658	658	658	658	658	658
ATSI																
CONTRACTUALLY INTERRUPTIBLE	1,054	1,693	1,736	1,736	1,736	1,736	1,736	1,736	1,736	1,736	1,736	1,736	1,736	1,736	1,736	1,736
DIRECT CONTROL	4	4	4	4	4	4	4	4	4	4	4	4	4	4	4	4
TOTAL LOAD MANAGEMENT	1,058	1,697	1,740	1,740	1,740	1,740	1,740	1,740	1,740	1,740	1,740	1,740	1,740	1,740	1,740	1,740
COMED																
CONTRACTUALLY INTERRUPTIBLE	1,440	1,602	1,150	1,150	1,150	1,150	1,150	1,150	1,150	1,150	1,150	1,150	1,150	1,150	1,150	1,150
DIRECT CONTROL	37	37	37	37	37	37	37	37	37	37	37	37	37	37	37	37
TOTAL LOAD MANAGEMENT	1,477	1,639	1,187	1,187	1,187	1,187	1,187	1,187	1,187	1,187	1,187	1,187	1,187	1,187	1,187	1,187
DAYTON																
CONTRACTUALLY INTERRUPTIBLE	220	186	234	234	234	234	234	234	234	234	234	234	234	234	234	234
DIRECT CONTROL	3	3	3	3	3	3	3	3	3	3	3	3	3	3	3	3
TOTAL LOAD MANAGEMENT	223	189	237	237	237	237	237	237	237	237	237	237	237	237	237	237
DEOK																
CONTRACTUALLY INTERRUPTIBLE	29	25	276	276	276	276	276	276	276	276	276	276	276	276	276	276
DIRECT CONTROL	59	59	59	59	59	59	59	59	59	59	59	59	59	59	59	59
TOTAL LOAD MANAGEMENT	88	84	335	335	335	335	335	335	335	335	335	335	335	335	335	335
DLCO																
CONTRACTUALLY INTERRUPTIBLE	214	236	137	137	137	137	137	137	137	137	137	137	137	137	137	137
DIRECT CONTROL	0	0	0	0	0	0	0	0	0	0	0	0	0	0	0	0
TOTAL LOAD MANAGEMENT	214	236	137	137	137	137	137	137	137	137	137	137	137	137	137	137
EKPC																
CONTRACTUALLY INTERRUPTIBLE	119	122	124	124	124	124	124	124	124	124	124	124	124	124	124	124
DIRECT CONTROL	4	4	4	4	4	4	4	4	4	4	4	4	4	4	4	4
TOTAL LOAD MANAGEMENT	123	126	128	128	128	128	128	128	128	128	128	128	128	128	128	128

Notes:
Forecast represents the amount of Demand Resources cleared in RPM auctions.
Winter load management is equal to Contractually Interruptible.

Table B-7 (Continued)

PJM WESTERN REGION AND PJM SOUTHERN REGION LOAD MANAGEMENT
PLACED UNDER PJM COORDINATION - SUMMER (MW)

	2014	2015	2016	2017	2018	2019	2020	2021	2022	2023	2024	2025	2026	2027	2028	2029
PJM WESTERN																
CONTRACTUALLY INTERRUPTIBLE	5,953	6,912	6,052	6,052	6,052	6,052	6,052	6,052	6,052	6,052	6,052	6,052	6,052	6,052	6,052	6,052
DIRECT CONTROL	132	132	132	132	132	132	132	132	132	132	132	132	132	132	132	132
TOTAL LOAD MANAGEMENT	6,085	7,044	6,184	6,184	6,184	6,184	6,184	6,184	6,184	6,184	6,184	6,184	6,184	6,184	6,184	6,184
DOM																
CONTRACTUALLY INTERRUPTIBLE	1,220	1,243	990	990	990	990	990	990	990	990	990	990	990	990	990	990
DIRECT CONTROL	87	87	87	87	87	87	87	87	87	87	87	87	87	87	87	87
TOTAL LOAD MANAGEMENT	1,307	1,330	1,077	1,077	1,077	1,077	1,077	1,077	1,077	1,077	1,077	1,077	1,077	1,077	1,077	1,077
PJM RTO																
CONTRACTUALLY INTERRUPTIBLE	13,590	13,960	11,550	11,550	11,550	11,550	11,550	11,550	11,550	11,550	11,550	11,550	11,550	11,550	11,550	11,550
DIRECT CONTROL	852	852	852	852	852	852	852	852	852	852	852	852	852	852	852	852
TOTAL LOAD MANAGEMENT	14,442	14,812	12,402	12,402	12,402	12,402	12,402	12,402	12,402	12,402	12,402	12,402	12,402	12,402	12,402	12,402