

75  
974.905  
044.4  
C.1

**DEPARTMENT OF HUMAN SERVICES**

**INTER-OFFICE COMMUNICATION**

**DATE** July 28, 1997

**TO** William Waldman  
Commissioner

**FROM** Karen Highsmith  
Director

**BY** David Heins  
Deputy Director



**SUBJECT** CURRENT PROGRAM STATISTICS

Attached please find CURRENT PROGRAM STATISTICS for May 1997, with modifications for Work First New Jersey. The FDP Statistical Summary has not been included, but is currently undergoing revision as a WFNJ Statistical Summary. Estimated TANF participation rates using the new WFNJ participation rate formulation mandated by PRWORA are included for May 1997. Also included are explanatory notes for the various data elements. Should you have any questions, please feel free to call me.

KH:kas:c

Attachments

c Guhl  
Grant  
Miller  
Tencza

*State of New Jersey  
Department of Human Services  
Division of Family Development*

# CURRENT PROGRAM STATISTICS



May 1997  
Karen Highsmith, Director

State of New Jersey  
Department of Human Services  
Division of Family Development

**CURRENT PROGRAM STATISTICS**  
May 1997

TABLE OF CONTENTS

	<b>Page</b>
<b>Highlights of Current Program Statistics .....</b>	<b>1-3</b>
 <b>Statistics by County, May 1997</b>	
Table 1 AFDC .....	4
Graph 1 Current AFDC Families .....	4
Table 2 Food Stamp Program.....	5
Graph 2 Current Food Stamp Households/Persons .....	5
Table 3 AFDC/SSI Emergency Assistance Program .....	6
Graph 3 Current AFDC Families Receiving Emergency Assistance .....	6
Table 4 Statistical Summary -- (Under Revision For Work First New Jersey).....	7
 <b>State Summary, 1995 - 1997</b>	
Table 5 AFDC, May 1995 - May 1997 .....	8
Graph 4 Families Receiving AFDC, 5/95 - 5/97 .....	8
Table 6 Food Stamp Program, May 1995 - May 1997 .....	9
Graph 5 Food Stamp Households, 5/95 - 5/97 .....	9
Graph 6 Food Stamp Recipients, 5/95 - 5/97.....	10
Table 7 AFDC Emergency Assistance Program, May 1995 - May 1997 .....	11
Graph 7 AFDC Families Receiving Emergency Assistance, 5/95 - 5/97 .....	11
Table 8 TANF Participation Rates, by County and Statewide, May 1997 .....	12
Graph 8 TANF Participation Rates, 5/97 .....	13
Table 9 General Assistance, and GA Emergency Assistance, March 1995 - March 1997 .....	14
Graph 9 General Assistance Recipients, 3/95-3/97 .....	14
Table 10 Child Support and Paternity, Federal Fiscal Years 1996-1997 .....	15
<b>Explanatory Notes.....</b>	<b>16-17</b>
 <b>Supplement</b>	
Table 11 General Assistance Recipients and EA Payments by County and Municipality, March 1997.....	18

## Highlights of Current Program Statistics

### **AFDC** (Tables 1 and 5, Graphs 1 and 4)

**About 101,000 eligible families in New Jersey were receiving AFDC as of the end of May 1997:**

- **91,300** single head of household families (Regular AFDC, C segment).
- Among two-parent families, about **2300** Unemployed Parent families (F Segment) and **2600** State AFDC families (N Segment).
- Less than **4900** Medicaid Only families.
- The largest numbers of families by county: Essex with **25,900**, Hudson with **16,000**, and Camden County with **11,800**. (53.2 percent of all AFDC families)
- Other counties ranged from **146** families in Hunterdon to **6,588** in Passaic County, with six counties below **1000** families.

**There were about 1100 fewer eligible AFDC families in May 1997 than in April 1997 and a decline of nearly 20,000 (more than 16 percent) over the past two years.**

- There were **1000** fewer eligible C segment families in May 1997 than in April 1997 and **17,000** less than two years ago.
- F segment families declined from **3800** in May 1995 to about **2300** in May 1997.
- State AFDC (N segment) was about **3400** in May 1995, slowly declined to about **2700** by December 1996 and remained at that level through April 1997, then declined to less than **2600** in May.
- Medicaid Only families averaged nearly **5200** for 1995, less than **5100** for 1996, and **4900** for the first five months of 1997. There were about **200 less** Medicaid Only families in May 1997 than a year earlier.

### **FOOD STAMP PROGRAM** (Tables 2 and 6, Graphs 2, 5, and 6)

**At the end of May 1997, 199,000 households were participating in the Food Stamp Program:**

- Less than **93,000** AFDC households with **296,000** persons.
- About **106,000** Other Low Income households with **161,000** persons.
- With a total of nearly **457,000** persons, including **219,000** adults and more than **238,000** children
- **49.2 percent** of the households were in Essex (**50,300**), Hudson (**28,000**) and Camden (**19,500**) Counties.
- The number of adults exceeded the number of children in Food Stamp households in **seven** counties (Bergen, Hunterdon, Monmouth, Morris, Somerset, Sussex, and Warren). In **five** others the number of adults and children are nearly equal (Atlantic, Burlington, Cape May, Middlesex and Union).



**The number of Food Stamp households in New Jersey remained in the 220,000 to 223,000 range From May 1995 through June 1996. Thereafter Food Stamp households declined substantially (from about 220,000 in June 1996 to less than 199,000 in May 1997).**

- The number of AFDC(FS) households has been less than Other Low Income households since November 1995, with a difference of close to **14,000** in May 1997. The number of Other Low Income households receiving Food Stamps averaged about **109,000** in 1995, peaked at close to **115,000** in May 1996, then fell below **107,000** by May 1997. There were more than **113,000** AFDC(FS) households in May 1995 and less than **93,000** in May 1997.
- With **522,000** Total Recipients in May 1995, the number has since been moving downward. Near **515,000** from July 1995 through May 1996, the level dropped substantially and was about **457,000** by May 1997. This is a total two-year decline of close to **65,000** or **12.4 percent**, of which **10.7 percentage points** occurred in the last 12 months.
- The number of Recipient Adults averaged **246,000** for 1995 through the first five months of 1996. From May 1996 through May 1997 the number declined by more almost **28,000 (11.3 percent)** from about **247,000** to **219,000**.
- With **275,000** Recipient Children in May 1995, the number has since been moving downward. By May 1997 the level was down **13.4 percent** (nearly **37,000**) to less than **239,000**.

## **EMERGENCY ASSISTANCE** (Tables 3, 7 and 9, Graphs 3, 7 and 9)

**In May 1997 Emergency Assistance (EA) payments were made for 3788 eligible AFDC families and 302 SSI recipients in New Jersey. For AFDC families this included payments for:**

- **1416** families with Temporary Rental Assistance (TRA)
- **250** motel placements and **298** emergency shelter placements
- **1824** families accounted for all other AFDC-EA payments, including back rent, back utilities, security deposits, furnishings, clothing and food allowance, or transitional housing.
- EA payments were made for **1043** AFDC families in Essex County, and **477** in Passaic. All other counties accounted for between **0** and **380** AFDC-EA payments, with thirteen counties **below 100**, including one with no AFDC-EA payments..

**In the past two years, the average number of EA payments for AFDC families was 5800 in 1995, and 4800 in 1996. For the first five months of 1997 the average was about 4000. The upturn from March to April 1997, most of which occurred in the "Other AFDC-EA" category which are generally one-time payments, was totally reversed as May dropped below the March level.**

- The number of TRA payments provided for AFDC families each month has declined steadily from nearly **2400** in May 1995 to little more than **1400** in May 1997.
- Emergency Shelter payments have been provided for **around 300 to 400** families each month in the last two years.
- Payments for Motel Housing declined from an average of **405** in 1995 to **289** in the first five months of 1997.
- Other EA payments were made for an average of nearly **2800** families in 1995, **2400** in 1996, and less than **2000** in the first five months of 1997.

For 1995 there were an average of 7400 GA EA recipients, and 6800 for 1996. Of those, GA TRA payments were made to an average of 4400 recipients in 1995, and about 4100 in 1996. For the first two months of 1997 there were an average of 7000 GA EA payments (which is slightly less than the comparable period in 1996), and about 4100 GA TRA payments.

## **ESTIMATED TANF PARTICIPATION RATES** (Table 8, Graph 8)

In May 1997 the estimated Statewide TANF participation rate was 16.3 percent. This estimate is based on the new participation rate formulation mandated by the 1996 federal welfare reform legislation establishing Temporary Assistance to Needy Families (TANF), which goes into effect with the implementation of Work First New Jersey welfare reform.

- County rates were distributed as follows:
  - under 10 percent** -- Camden
  - 10 to 19 percent** -- Bergen, Cape May, Cumberland, Essex, Hudson, Hunterdon, Mercer, Ocean, Passaic, Salem, Union, Warren
  - 20 to 29 percent** -- Burlington, Gloucester, Middlesex, Monmouth, Somerset
  - 30 to 39 percent** -- Sussex
  - 40 to 49 percent** -- Morris

## **GENERAL ASSISTANCE** (Table 9, Graph 9)

In the two year period ending March 1997 (the latest available data) the number of GA recipients remained close to 34,000 through May 1996, then dropped to 31,000 or less through March 1997.

- The number of employable GA recipients has closely mirrored the changes in total GA recipients. There were an average of more than **22,000** through May 1996, and near or slightly over **20,000** through March 1997.
- Over the two year period the number of Unemployable GA recipients remained within a relatively narrow range. The level was around **11,000 to 12,000** from February 1995 through October 1995. It declined to about **10,000** from November 1995 through January 1996, and remained between **10,000 and 11,000** through March 1997.

## **CHILD SUPPORT AND PATERNITY** (Table 10)

The total distribution of collections of the Child Support and Paternity Program increased from more than \$247 million in the first six months of FFY 1996 (October 1995 - March 1996) to nearly \$282 million in the first six months of FFY 1997 (October 1996 - March 1997).

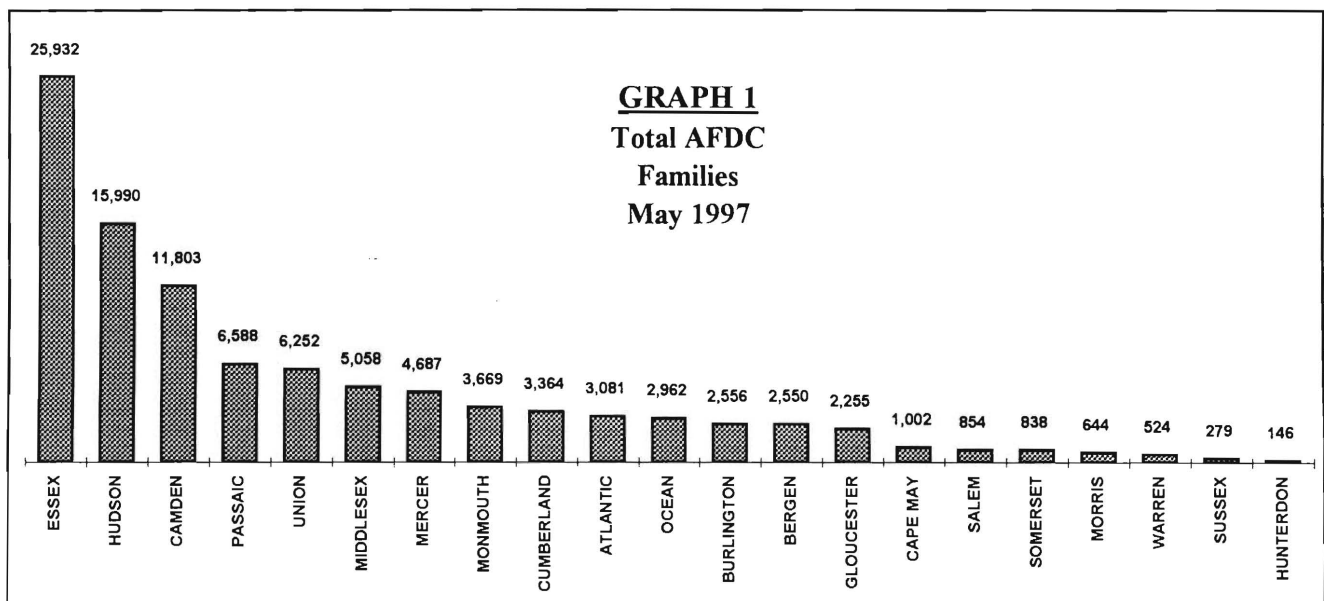
New Jersey Department of Human Services  
Division of Family Development

**Table 1****AFDC Program**

**NUMBER OF APPLICATIONS AND TERMINATIONS DURING REPORT MONTH, AND  
NUMBER OF ELIGIBLE FAMILIES RECEIVING AFDC AT END OF REPORT MONTH  
May 1997**

County	Applications Approved	Terminations	Regular AFDC (C Segment)	Unemployed Parents(F)	State AFDC(N)	Medicaid Only	Total AFDC
ATLANTIC	183	288	2,852	63	40	126	3,081
BERGEN	109	157	2,281	107	92	70	2,550
BURLINGTON	206	236	2,210	59	72	215	2,556
CAMDEN	688	821	10,344	393	326	740	11,803
CAPE MAY	87	103	812	60	58	72	1,002
CUMBERLAND	237	309	2,894	116	166	188	3,364
ESSEX	876	1,070	24,765	315	201	651	25,932
GLOUCESTER	177	229	1,902	81	62	210	2,255
HUDSON	465	629	14,379	223	528	860	15,990
HUNTERDON	20	18	98	10	5	33	146
MERCER	244	323	4,164	75	101	347	4,687
MIDDLESEX	331	430	4,235	189	228	406	5,058
MONMOUTH	178	220	3,419	68	114	68	3,669
MORRIS	39	60	578	17	14	35	644
OCEAN	191	242	2,476	145	122	219	2,962
PASSAIC	252	331	6,104	204	204	76	6,588
SALEM	83	79	756	10	27	61	854
SOMERSET	99	108	705	36	34	63	838
SUSSEX	34	34	219	10	1	49	279
UNION	349	390	5,665	100	163	324	6,252
WARREN	34	44	432	24	30	38	524
<b>NJ TOTAL</b>	<b>4,882</b>	<b>6,121</b>	<b>91,290</b>	<b>2,305</b>	<b>2,588</b>	<b>4,851</b>	<b>101,034</b>

Data is derived from NJ Division of Family Development's FAMIS report #FF-012



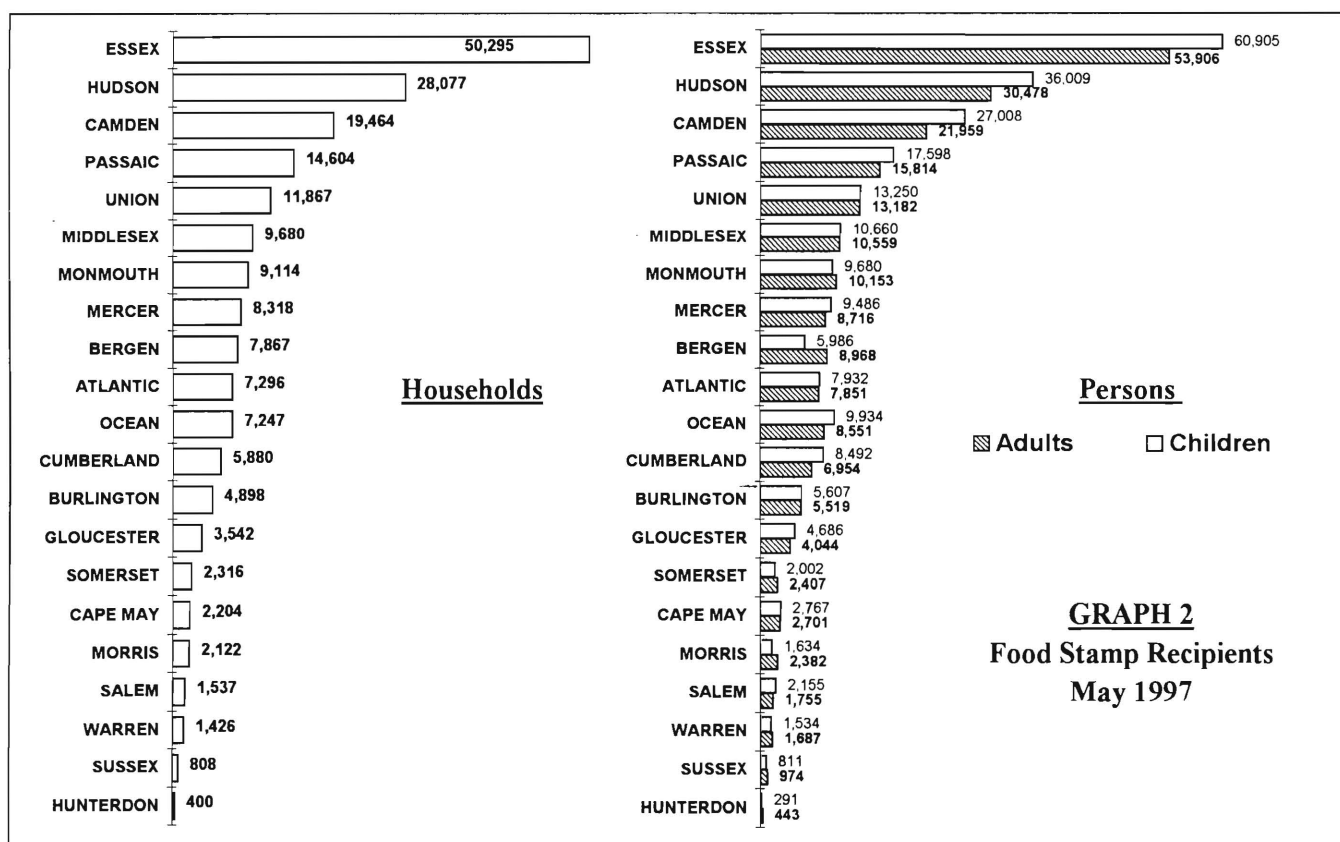
New Jersey Department of Human Services  
Division of Family Development

**Table 2**  
**FOOD STAMP Program**  
**NUMBER OF ATP'S ISSUED TO HOUSEHOLDS, PERSONS, ADULTS**  
**AND CHILDREN AT THE END OF THE REPORT MONTH**  
**May 1997**

County	<u>HOUSEHOLDS</u>			<u>PERSONS</u>				
	AFDC	Other low income	TOTAL	TOTAL	AFDC	Other low income	Adults	Children
ATLANTIC	2,809	4,487	7,296	15,783	9,206	6,577	7,851	7,932
BERGEN	2,232	5,635	7,867	14,954	6,660	8,294	8,968	5,986
BURLINGTON	2,140	2,758	4,898	11,126	6,720	4,406	5,519	5,607
CAMDEN	10,967	8,497	19,464	48,967	36,572	12,395	21,959	27,008
CAPE MAY	971	1,233	2,204	5,468	3,322	2,146	2,701	2,767
CUMBERLAND	3,259	2,621	5,880	15,446	11,159	4,287	6,954	8,492
ESSEX	24,877	25,418	50,295	114,811	78,468	36,343	53,906	60,905
GLOUCESTER	1,959	1,583	3,542	8,730	6,256	2,474	4,044	4,686
HUDSON	14,869	13,208	28,077	66,487	45,958	20,529	30,478	36,009
HUNTERDON	86	314	400	734	272	462	443	291
MERCER	3,840	4,478	8,318	18,202	12,218	5,984	8,716	9,486
MIDDLESEX	4,371	5,309	9,680	21,219	13,363	7,856	10,559	10,660
MONMOUTH	3,432	5,682	9,114	19,833	11,130	8,703	10,153	9,680
MORRIS	540	1,582	2,122	4,016	1,641	2,375	2,382	1,634
OCEAN	2,974	4,273	7,247	18,485	10,038	8,447	8,551	9,934
PASSAIC	5,897	8,707	14,604	33,412	19,575	13,837	15,814	17,598
SALEM	800	737	1,537	3,910	2,657	1,253	1,755	2,155
SOMERSET	725	1,591	2,316	4,409	2,166	2,243	2,407	2,002
SUSSEX	213	595	808	1,785	679	1,106	974	811
UNION	5,147	6,720	11,867	26,432	16,698	9,734	13,182	13,250
WARREN	485	941	1,426	3,221	1,569	1,652	1,687	1,534
NJ TOTAL	92,593	106,369	198,962	457,430	296,327	161,103	219,003	238,427

ATP - Authorization to Participate

Data is derived from NJ Division of Family Development's FAMIS report # FB-160.



New Jersey Department of Human Services  
Division of Family Development

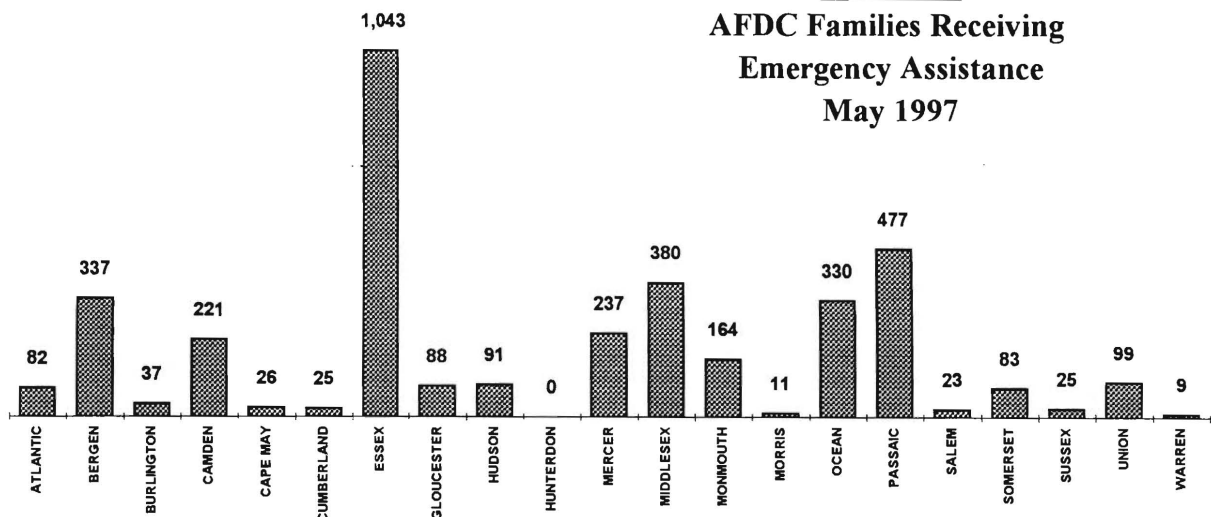
**Table 3**  
**AFDC/SSI EMERGENCY ASSISTANCE**  
**NUMBER OF ELIGIBLE FAMILIES RECEIVING EMERGENCY ASSISTANCE PAYMENTS**  
**(UNDUPLICATED CASES)**

May 1997

County	TOTAL AFDC-EA	AFDC Families Receiving Emergency Assistance			Other AFDC-EA	SSI Recipients Receiving EA
		Temporary Rental Assist.	Motel Housing	Emergency Shelter		
ATLANTIC	82	32	11	14	25	45
BERGEN	337	189	29	26	93	11
BURLINGTON	37	2	1	18	16	0
CAMDEN	221	69	2	12	138	19
CAPE MAY	26	8	2	0	16	2
CUMBERLAND	25	0	0	7	18	2
ESSEX	1,043	477	6	81	479	35
GLOUCESTER	88	43	3	28	14	7
HUDSON	91	21	4	16	50	4
HUNTERDON	0	0	0	0	0	0
MERCER	237	106	27	1	103	8
MIDDLESEX	380	195	23	25	137	35
MONMOUTH	164	104	12	1	47	2
MORRIS	11	1	0	6	4	6
OCEAN	330	137	104	4	85	76
PASSAIC	477	3	1	15	458	43
SALEM	23	8	3	1	11	0
SOMERSET	83	9	8	21	45	1
SUSSEX	25	2	4	6	13	3
UNION	99	10	3	15	71	3
WARREN	9	0	7	1	1	0
NJ TOTAL	3,788	1,416	250	298	1,824	302

Derived from NJ Division of Family Development FAMIS Reports #FM457 and #FM430-03A

**GRAPH 3**  
**AFDC Families Receiving**  
**Emergency Assistance**  
**May 1997**



New Jersey Department of Human Services  
Division of Family Development

**TABLE 4**

**STATISTICAL SUMMARY**

This table is under revision for presentation at a future date to  
reflect Work First New Jersey Statistics

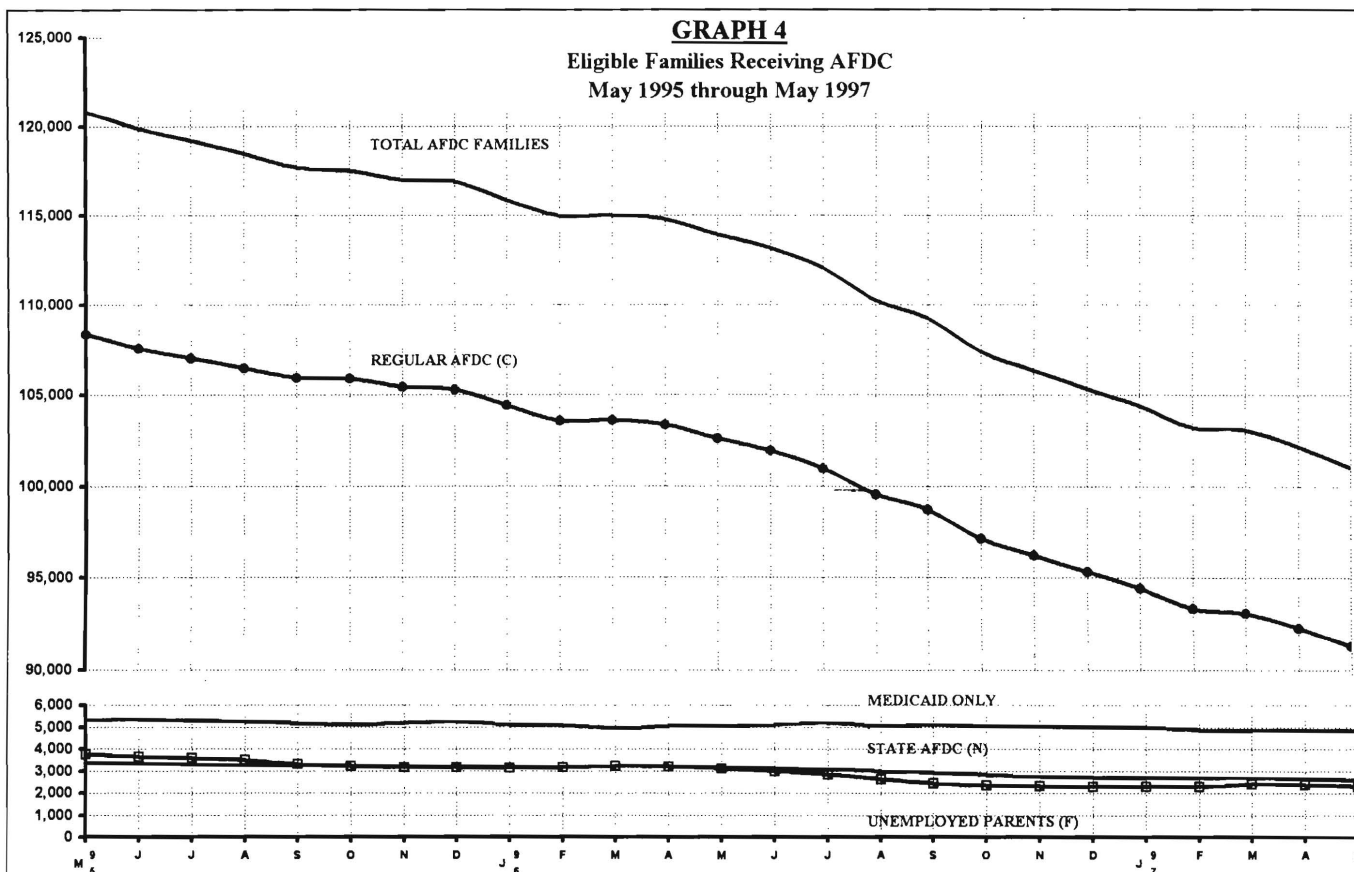
New Jersey Department of Human Services  
Division of Family Development

**Table 5****AFDC Program**

NUMBER OF APPLICATIONS AND TERMINATIONS DURING REPORT MONTH, AND  
NUMBER OF ELIGIBLE FAMILIES RECEIVING AFDC AT END OF REPORT MONTH  
May 1995 through May 1997

	Applications Approved	Terminations	Regular AFDC (C Segment)	Unemployed Parents(F)	State AFDC(N)	Medicaid Only	Total AFDC
1995 MAY	5,288	5,784	108,343	3,773	3,369	5,328	120,813
JUN	5,558	6,458	107,541	3,639	3,336	5,358	119,874
JUL	5,977	6,781	107,028	3,574	3,286	5,293	119,181
AUG	5,547	6,294	106,475	3,489	3,260	5,239	118,463
SEP	5,922	6,647	105,943	3,303	3,260	5,175	117,681
OCT	7,062	7,359	105,917	3,224	3,257	5,110	117,508
NOV	6,083	6,660	105,445	3,164	3,199	5,189	116,997
DEC	5,582	5,775	105,287	3,165	3,189	5,258	116,899
AVERAGE (12 mos.)	5,956	6,460	107,376	3,575	3,288	5,192	119,430
1996 JAN	5,332	6,236	104,430	3,139	3,173	5,113	115,855
FEB	5,217	6,283	103,561	3,161	3,170	5,060	114,952
MAR	6,317	6,302	103,598	3,230	3,217	4,956	115,001
APR	6,896	7,241	103,352	3,192	3,211	5,040	114,795
MAY	5,335	6,152	102,600	3,112	3,163	5,038	113,913
JUN	5,319	6,121	101,947	2,999	3,117	5,116	113,179
JUL	5,874	7,027	100,968	2,843	3,073	5,200	112,084
AUG	5,014	6,789	99,567	2,638	2,993	5,053	110,251
SEP	6,311	7,440	98,744	2,462	2,933	5,097	109,236
OCT	5,213	7,015	97,152	2,368	2,822	5,026	107,368
NOV	5,374	6,549	96,238	2,329	2,752	5,034	106,353
DEC	5,018	6,137	95,322	2,308	2,708	4,992	105,330
AVERAGE	5,602	6,608	100,623	2,815	3,028	5,060	111,526
1997 JAN	5,933	6,803	94,429	2,290	2,692	4,994	104,405
FEB	4,410	5,728	93,359	2,310	2,700	4,862	103,231
MAR	6,184	6,416	93,104	2,412	2,713	4,835	103,064
APR	5,172	6,034	92,300	2,378	2,671	4,828	102,177
MAY	4,882	6,121	91,290	2,305	2,588	4,851	101,034
AVERAGE	5,316	6,220	92,896	2,339	2,673	4,874	102,782

Data is derived from NJ Division of Family Development's FAMIS report #FF-012



## New Jersey Department of Human Services

## Division of Family Development

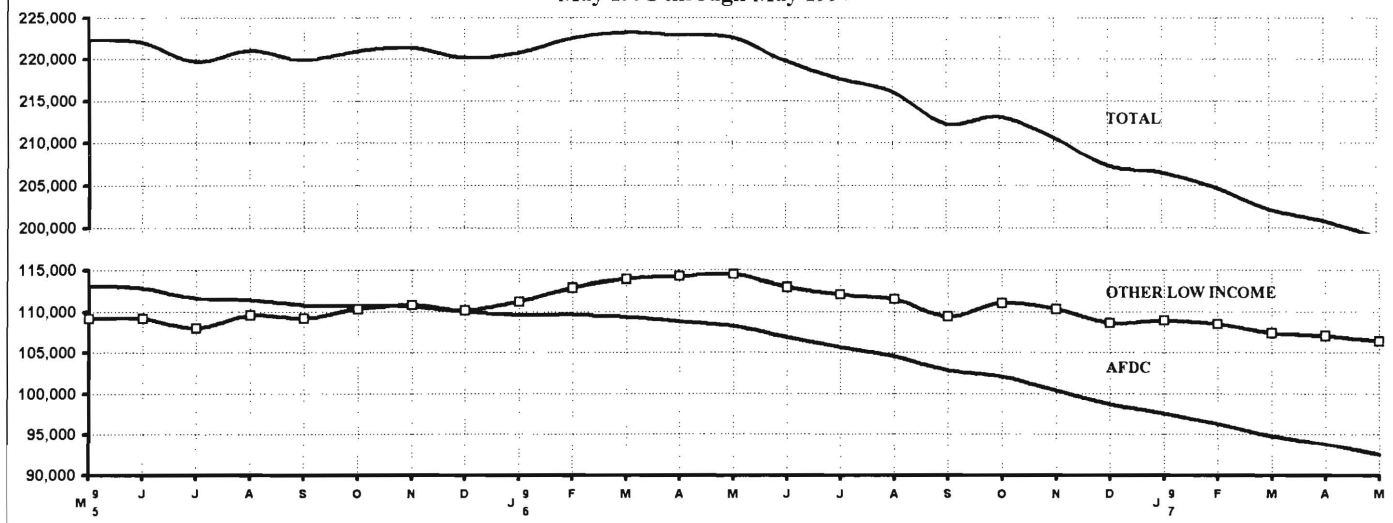
**TABLE 6**  
**FOOD STAMP Program State Summary**  
**NUMBER OF ATP'S ISSUED TO HOUSEHOLDS, PERSONS**  
**ADULTS AND CHILDREN AT THE END OF THE REPORT MONTH**  
**May 1995 through May 1997**

	<u>HOUSEHOLDS</u>			<u>TOTAL</u>	<u>PERSONS</u>			
	AFDC	Other low income	TOTAL		AFDC	Other low income	Adults	Children
1995 MAY	113,125	109,171	222,296	522,173	355,099	167,074	246,949	275,224
JUN	112,827	109,198	222,025	521,084	354,211	166,873	246,557	274,527
JUL	111,635	107,978	219,613	515,478	350,378	165,100	243,727	271,751
AUG	111,415	109,603	221,018	516,618	349,372	167,246	245,110	271,508
SEP	110,760	109,154	219,914	513,517	347,126	166,391	243,723	269,794
OCT	110,697	110,268	220,965	514,598	346,519	168,079	244,911	269,687
NOV	110,630	110,763	221,393	514,823	346,034	168,789	245,455	269,368
DEC	109,992	110,155	220,147	511,727	343,955	167,772	243,965	267,762
AVERAGE (12 mos.)	112,211	109,290	221,500	519,170	351,916	167,254	245,892	273,279
1996 JAN	109,554	111,166	220,720	512,165	342,778	169,387	244,801	267,364
FEB	109,649	112,813	222,462	515,181	343,314	171,867	246,961	268,220
MAR	109,364	113,895	223,259	515,676	342,361	173,315	247,695	267,981
APR	108,787	114,163	222,950	514,375	340,597	173,778	247,380	266,995
MAY	108,205	114,458	222,663	513,213	338,891	174,322	246,918	266,295
JUN	106,875	112,888	219,763	506,926	334,762	172,164	243,422	263,504
JUL	105,653	112,023	217,676	501,575	331,157	170,418	240,840	260,735
AUG	104,568	111,473	216,041	497,436	328,055	169,381	238,804	258,632
SEP	102,827	109,441	212,268	488,765	322,572	166,193	234,442	254,323
OCT	102,088	111,008	213,096	489,991	321,226	168,765	235,401	254,590
NOV	100,411	110,254	210,665	484,378	317,163	167,215	232,756	251,622
DEC	98,729	108,617	207,346	477,693	312,869	164,824	229,191	248,502
AVERAGE	105,559	111,850	217,409	501,448	331,312	170,136	240,718	260,730
1997 JAN	97,555	108,961	206,516	475,374	310,342	165,032	228,388	246,986
FEB	96,279	108,462	204,741	471,576	307,066	164,510	226,570	245,006
MAR	94,787	107,331	202,118	465,920	303,052	162,868	223,576	242,344
APR	93,845	107,008	200,853	462,303	300,073	162,230	221,538	240,765
MAY	92,593	106,369	198,962	457,430	296,327	161,103	219,003	238,427
AVERAGE	95,012	107,626	202,638	466,521	303,372	163,149	223,815	242,706

ATP - Authorization to Participate

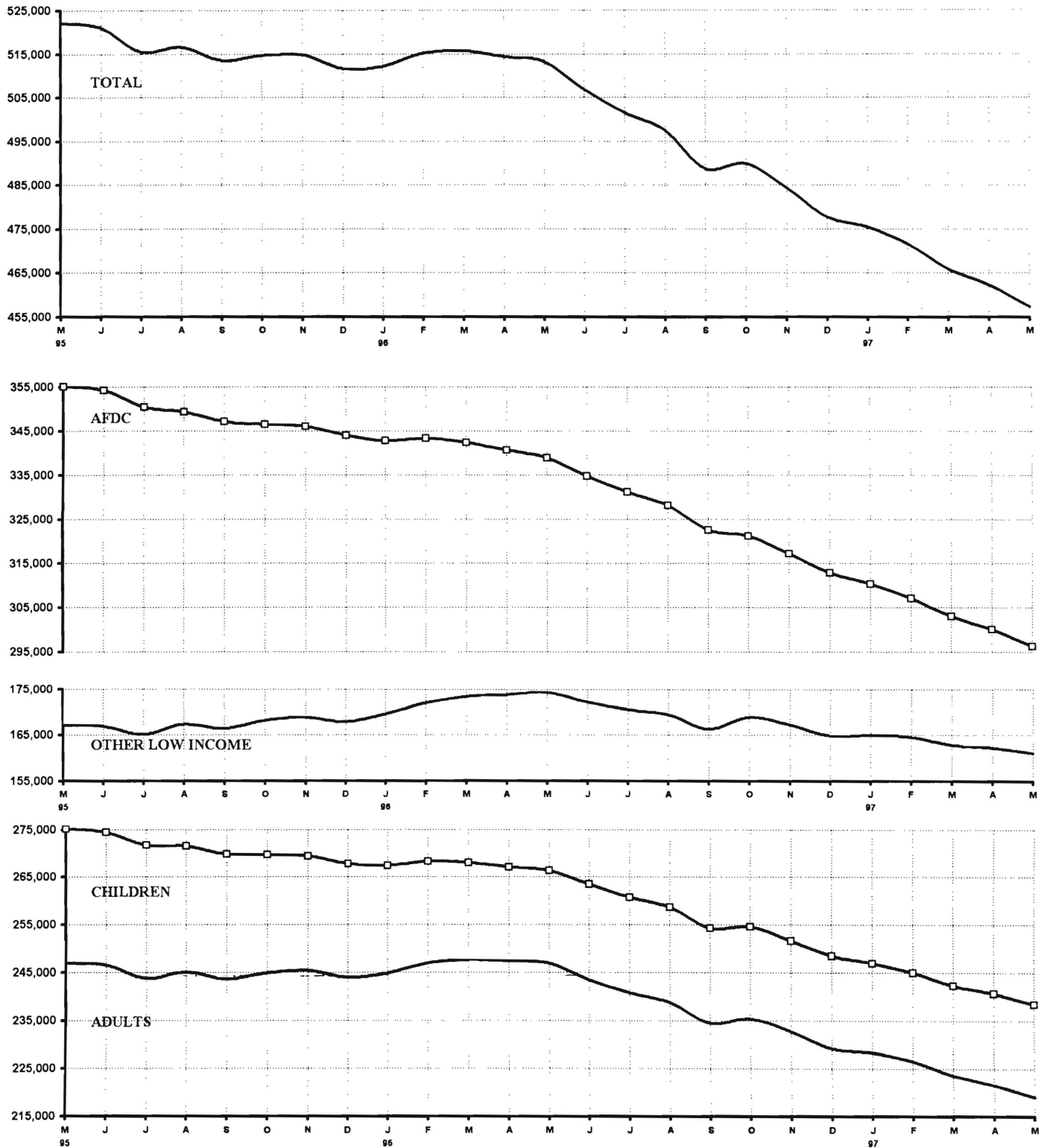
Data is derived from NJ Division of Family Development's FAMIS report # FB-160.

**GRAPH 5**  
**Food Stamp Households**  
**May 1995 through May 1997**





**GRAPH 6**  
**Food Stamp Recipients**  
 May 1995 through May 1997



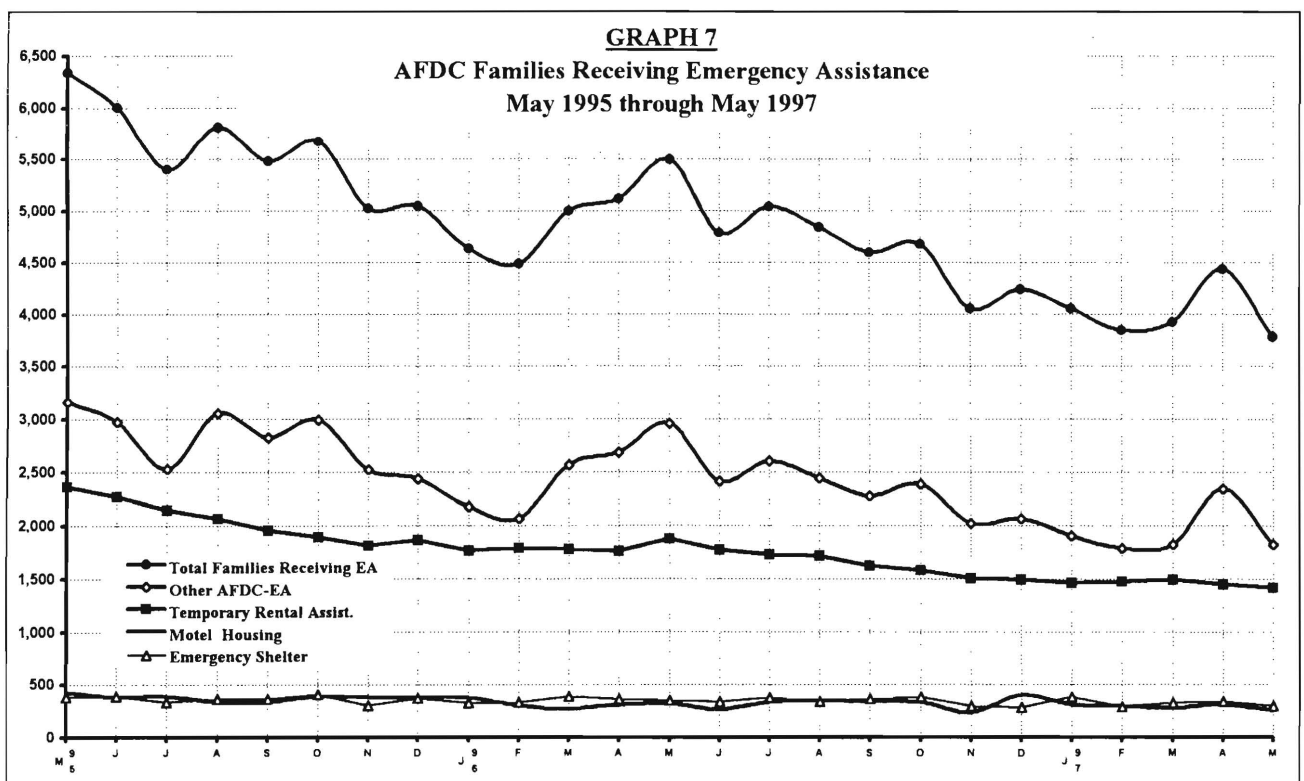
New Jersey Department of Human Services  
Division of Family Development

**TABLE 7**

**EMERGENCY ASSISTANCE Program for AFDC Recipients, State Summary**  
**NUMBER OF ELIGIBLE FAMILIES RECEIVING EMERGENCY ASSISTANCE PAYMENTS**  
**(UNDUPLICATED CASES)**  
**May 1995 through May 1997**

	Total Families Receiving EA	Temporary Rental Assistance	Motel Housing	Emergency Shelter	Other AFDC-EA
1995 MAY	6,338	2,364	427	381	3,166
JUN	6,007	2,268	382	387	2,970
JUL	5,402	2,149	389	334	2,530
AUG	5,813	2,068	331	362	3,052
SEP	5,482	1,958	336	364	2,824
OCT	5,678	1,891	388	410	2,989
NOV	5,024	1,816	384	302	2,522
DEC	5,048	1,864	377	369	2,438
AVERAGE (12 mos.)	5,755	2,201	405	369	2,779
1996 JAN	4,639	1,761	374	325	2,179
FEB	4,490	1,788	305	330	2,067
MAR	5,001	1,779	270	388	2,564
APR	5,118	1,760	309	364	2,685
MAY	5,498	1,873	323	350	2,952
JUN	4,791	1,772	266	341	2,412
JUL	5,044	1,729	335	377	2,603
AUG	4,845	1,716	346	339	2,444
SEP	4,600	1,625	337	362	2,276
OCT	4,683	1,576	334	385	2,388
NOV	4,059	1,507	237	294	2,021
DEC	4,244	1,492	400	286	2,066
AVERAGE	4,751	1,698	320	345	2,388
1997 JAN	4,059	1,462	310	382	1,905
FEB	3,847	1,473	296	292	1,786
MAR	3,926	1,494	278	327	1,827
APR	4,440	1,447	309	342	2,342
MAY	3,788	1,416	250	298	1,824
AVERAGE	4,012	1,458	289	328	1,937

Data derived from NJ Division of Family Development FAMIS Report #FM457 and #FM430-03a.



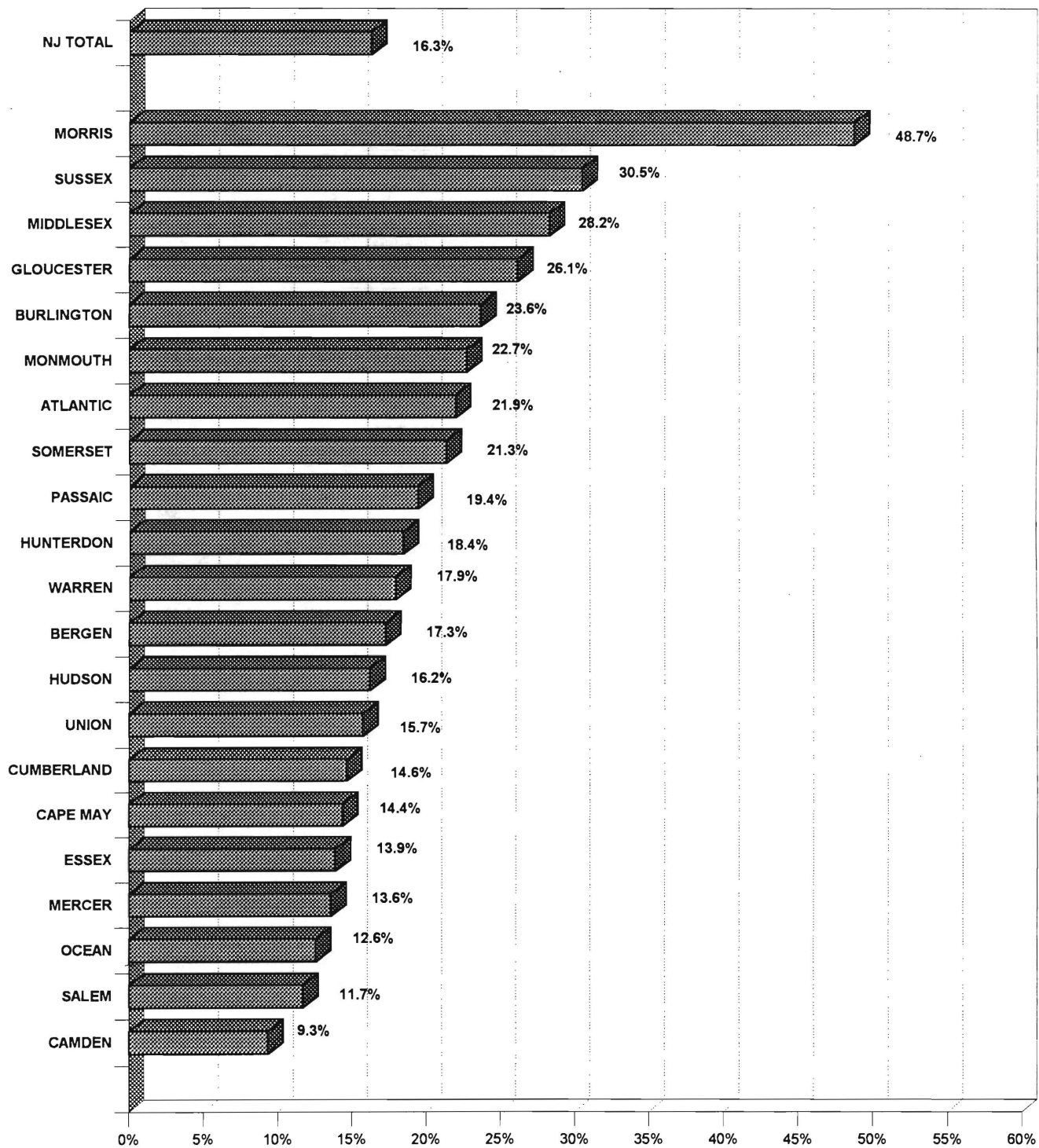
New Jersey Department of Human Services  
Division of Family Development

**Table 8**  
**ESTIMATED TANF PARTICIPATION RATES**  
**May 1997**

County	ESTIMATED TANF PARTICIPATION RATE
ATLANTIC	21.9%
BERGEN	17.3%
BURLINGTON	23.6%
CAMDEN	9.3%
CAPE MAY	14.4%
CUMBERLAND	14.6%
ESSEX	13.9%
GLOUCESTER	26.1%
HUDSON	16.2%
HUNTERDON	18.4%
MERCER	13.6%
MIDDLESEX	28.2%
MONMOUTH	22.7%
MORRIS	48.7%
OCEAN	12.6%
PASSAIC	19.4%
SALEM	11.7%
SOMERSET	21.3%
SUSSEX	30.5%
UNION	15.7%
WARREN	17.9%
NJ TOTAL	16.3%

The new Work-First New Jersey participation rate formulation mandated by PRWORA, 1996 federal welfare reform legislation establishing Temporary Assistance to Needy Families (TANF)

**Graph 8**  
**ESTIMATED TANF PARTICIPATION RATES**  
**May 1997**

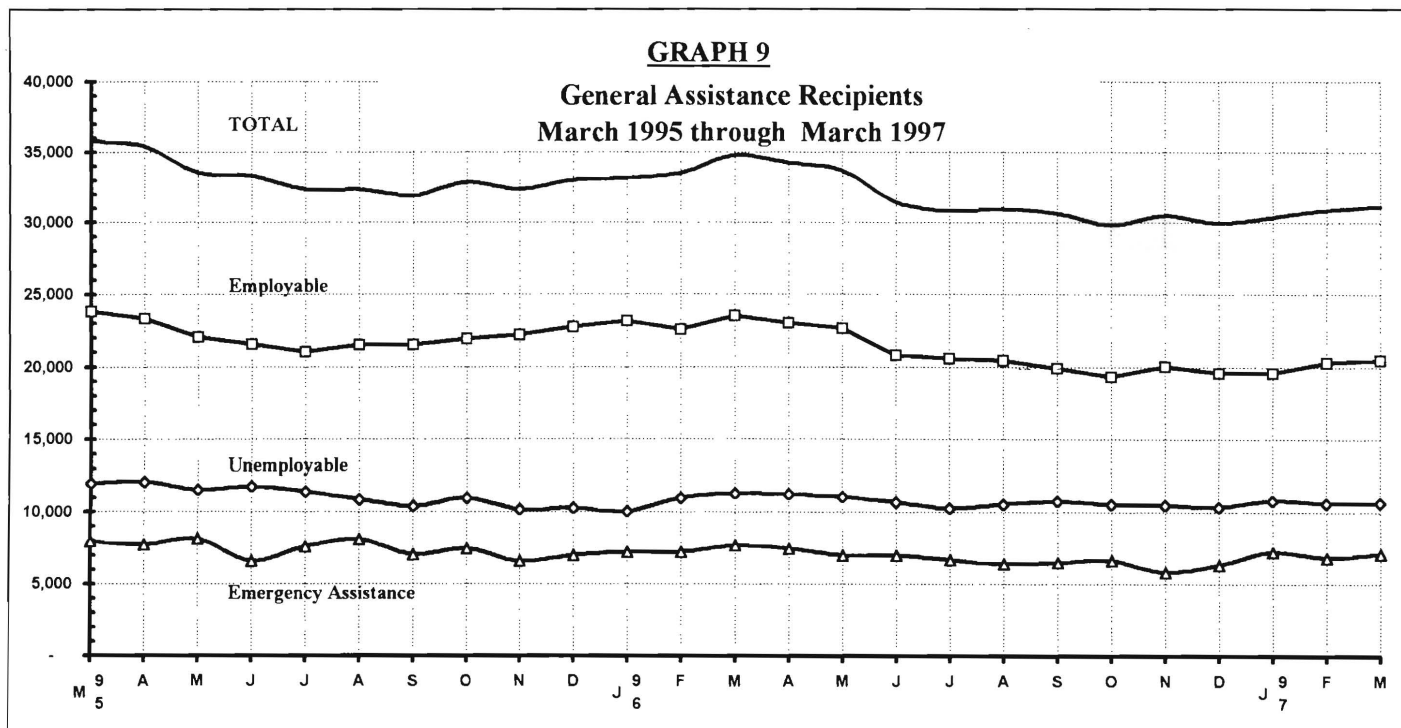


New Jersey Department of Human Services  
Division of Family Development

**TABLE 9**  
**GENERAL ASSISTANCE Program, State Summary**  
**NUMBER OF EMPLOYABLE AND UNEMPLOYABLE RECIPIENTS**  
**AND EMERGENCY ASSISTANCE PAYMENTS DURING REPORT MONTH**  
**March 1995 through March 1997**

	<u>All Persons Aided</u>			<u>Emergency Assistance Payments</u>		
	Employable	Unemployable	Total	Temporary Rental Assistance	Other GA-EA	Total
1995 MAR	23,855	11,976	35,831	5,036	2,909	7,945
APR	23,337	12,082	35,419	4,833	2,887	7,720
MAY	22,046	11,527	33,573	4,995	3,135	8,130
JUN	21,575	11,738	33,313	4,423	2,146	6,569
JUL	21,000	11,391	32,391	4,048	3,526	7,574
AUG	21,526	10,829	32,355	4,174	3,909	8,083
SEP	21,525	10,389	31,914	4,110	2,945	7,055
OCT	21,913	10,959	32,872	3,939	3,497	7,436
NOV	22,206	10,171	32,377	4,141	2,422	6,563
DEC	22,732	10,268	33,000	4,086	2,902	6,988
AVERAGE (12 mos.)	22,172	11,178	33,611	4,420	2,947	7,368
1996 JAN	23,140	10,054	33,194	4,421	2,803	7,224
FEB	22,584	10,927	33,511	4,567	2,651	7,218
MAR	23,528	11,243	34,771	4,472	3,185	7,657
APR	23,028	11,221	34,249	4,490	2,944	7,434
MAY	22,657	11,054	33,711	4,064	2,947	7,011
JUN	20,785	10,667	31,452	4,283	2,716	6,999
JUL	20,546	10,282	30,828	3,754	2,922	6,676
AUG	20,416	10,552	30,968	3,958	2,448	6,406
SEP	19,895	10,741	30,636	3,905	2,597	6,502
OCT	19,310	10,514	29,824	3,894	2,728	6,622
NOV	20,019	10,508	30,527	3,662	2,166	5,828
DEC	19,582	10,369	29,951	3,725	2,574	6,299
AVERAGE	21,291	10,678	31,969	4,100	2,723	6,823
1997 JAN	19,562	10,809	30,371	4,182	3,029	7,211
FEB	20,274	10,607	30,881	3,994	2,807	6,801
MAR	20,467	10,678	31,145	4,167	2,907	7,074
AVERAGE	20,101	10,698	30,799	4,114	2,914	7,029

Data Sources: NJ Division of Family Development, GA Fiscal Unit



New Jersey Department of Human Services  
Division of Family Development

**TABLE 10**  
**CHILD SUPPORT AND PATERNITY COLLECTIONS**  
**State Summary**

COLLECTION SOURCE	Comparison of FFY 1996 and FFY 1997		
	10/95-3/96	10/96-3/97	% change
<b>AFDC &amp; FOSTER CARE</b>			
Federal Tax	\$6,749,595	\$7,707,660	14.2%
State Tax	922,379	822,971	-10.8%
Unempl. Ins. Ben.	2,689,648	3,001,801	11.6%
Income Withholding	21,225,922	20,941,264	-1.3%
Other/Own Behalf	7,375,710	9,416,070	27.7%
From Other States	1,647,114	1,939,279	17.7%
For Other States	3,724,723	4,263,356	14.5%
<b>TOTAL COLLECTION</b>	<b>\$44,335,091</b>	<b>\$48,092,401</b>	<b>8.5%</b>
<b>TOTAL DISTRIBUTION</b>	<b>\$41,715,983</b>	<b>\$42,340,975</b>	<b>1.5%</b>
<b>NON- AFDC</b>			
Federal Tax	\$3,493,942	\$3,273,498	-6.3%
State Tax	1,167,698	1,220,099	4.5%
Unempl. Ins. Ben.	9,762,722	9,161,811	-6.2%
Income Withholding	121,661,041	136,703,876	12.4%
Other/Own Behalf	60,072,125	66,727,469	11.1%
From Other States	10,053,246	11,462,625	14.0%
For Other States	13,978,147	15,158,974	8.4%
<b>TOTAL COLLECTION</b>	<b>\$220,188,921</b>	<b>\$243,708,352</b>	<b>10.7%</b>
<b>TOTAL DISTRIBUTION</b>	<b>\$205,669,155</b>	<b>\$239,627,999</b>	<b>16.5%</b>
<b>TOTAL</b>			
Federal Tax	\$10,243,537	\$10,981,158	7.2%
State Tax	\$2,090,077	\$2,043,070	-2.2%
Unempl. Ins. Ben.	\$12,452,370	\$12,163,612	-2.3%
Income Withholding	\$142,886,963	\$157,645,140	10.3%
Other/Own Behalf	\$67,447,835	\$76,143,539	12.9%
From Other States	\$11,700,360	\$13,401,904	14.5%
For Other States	\$17,702,870	\$19,422,330	9.7%
<b>TOTAL COLLECTION</b>	<b>\$264,524,012</b>	<b>\$291,800,753</b>	<b>10.3%</b>
<b>TOTAL DISTRIBUTION</b>	<b>\$247,385,138</b>	<b>\$281,968,974</b>	<b>14.0%</b>

Distributed amount represents collections reported and recognized by the Federal Office of  
Child Support Enforcement for calculating incentives and annual report to Congress

Source: DFD Office of Child Support and Paternity Programs

### **Explanatory Notes**

The Department of Human Services Division of Family Development provides basic income and an opportunity to achieve self-sufficiency for individuals and families served by the Division's programs. The Division provides leadership, direction and supervision to those public agencies responsible for administering those programs and plans for and develops policies to promote self-sufficiency.

**WORK FIRST NEW JERSEY (WFNJ)** - Fully implemented July 1, 1997, this is New Jersey's welfare reform program which responds to the requirements of the Federal Personal Responsibility and Work Opportunity Reconciliation Act (PRWORA) of 1996. PRWORA establishes Temporary Assistance to Needy Families (TANF) as the replacement for AFDC. WFNJ includes two segments, WFNJ/TANF for families with children, and WFNJ/GA (General Assistance) for single adults and couples without dependent children. The emphasis is on achieving self-sufficiency and limits lifetime receipt of financial assistance to a total of five years.

**AID TO FAMILIES WITH DEPENDENT CHILDREN (AFDC)** - Financial assistance for dependent children and their natural or adoptive parents, or certain other relatives recognized as taking the place of a parent. (Replaced by WFNJ/TANF July 1, 1997).

**Regular AFDC (C Segment)** - assistance when only one parent is in the home due to death or absence, or both parents are in the home but at least one is incapacitated.

**Unemployed Parents (F Segment)** - assistance when both parents are in the home, neither is incapacitated and the primary wage earner meets the federally defined criteria for unemployment.

**State AFDC (N Segment)** - assistance when both parents are in the home, neither is incapacitated, and the primary wage earner does not meet the federal definition of unemployment.

**Medicaid Only** - families no longer receiving AFDC financial assistance but remaining eligible for Medicaid under applicable provisions which extend coverage beyond period of AFDC assistance.

**FOOD STAMP PROGRAM (FS)** - Authorized by Congress as a nutritional supplement program to provide low income households with more food of greater variety and better nutrition. Program eligibility is based on household income, resources, and expenses for medical, shelter, and dependent care. CWA staff refer certain recipients to the New Jersey Department of Labor for participation in the Food Stamp Employment and Training Program.

**EMERGENCY ASSISTANCE (EA)** - Payments to those eligible for WFNJ/TANF or WFNJ/GA, authorized during the 30 consecutive days immediately following the emergency (defined as a substantial loss of shelter, food, clothing, or household furnishings by fire, flood or other similar disaster) or if the eligible individual or family is in an imminent or actual state of homelessness.



New Jersey Department of Human Services  
Division of Family Development

**TABLE 11****GENERAL ASSISTANCE Program**

**EMPLOYABLE AND UNEMPLOYABLE RECIPIENTS AND EMERGENCY ASSISTANCE RECIPIENTS  
COUNTIES AND 21 LARGEST MUNICIPALITIES**

**March 1997**

<u>County/ Municipality</u>	<u>Total Persons Aided</u>			<u>Emergency Assistance Payments</u>		
	Employable	Unemployable	Total	Temporary Rental Assist.	Other GA-EA	Total
ATLANTIC	1,096	574	1,670	73	33	106
BERGEN	523	491	1,014	236	108	344
BURLINGTON	395	379	774	128	96	224
CAMDEN	2,070	1,113	3,183	237	199	436
CAPE MAY	159	98	257	20	21	41
CUMBERLAND	354	183	537	6	14	20
ESSEX	6,966	2,123	9,089	996	1,402	2,398
GLOUCESTER	149	146	295	15	11	26
HUDSON	886	1,187	2,073	137	36	173
HUNTERDON	46	47	93	25	13	38
MERCER	1,538	737	2,275	275	336	611
MIDDLESEX	463	542	1,005	80	44	124
MONMOUTH	648	637	1,285	294	54	348
MORRIS	116	186	302	36	18	54
OCEAN	665	400	1,065	345	170	515
PASSAIC	2,235	730	2,965	459	193	652
SALEM	150	47	197	18	13	31
SOMERSET	79	113	192	39	13	52
SUSSEX	31	43	74	24	5	29
UNION	1,850	838	2,688	697	124	821
WARREN	48	64	112	27	4	31
<b>TOTAL NJ</b>	<b>20,467</b>	<b>10,678</b>	<b>31,145</b>	<b>4,167</b>	<b>2,907</b>	<b>7,074</b>

Atlantic City	916	333	1,249	60	30	90
Mount Holly	128	69	197	39	61	100
Camden	1,790	745	2,535	158	150	308
Vineland	168	96	264	4	10	14
East Orange	506	348	854	206	24	230
Irvington	329	121	450	53	11	64
Montclair	129	60	189	30	11	41
Newark	5,458	1,366	6,824	623	1,349	1,972
Orange	400	59	459	47	0	47
Bayonne	121	64	185	7	0	7
Hoboken	115	122	237	16	1	17
Jersey City	505	533	1,038	69	24	93
Trenton	1,439	623	2,062	237	328	565
Perth Amboy	110	117	227	12	5	17
Asbury Park	177	102	279	81	4	85
Long Branch	161	110	271	66	1	67
Lakewood	306	118	424	174	30	204
Passaic	424	283	707	177	30	207
Paterson	1,719	314	2,033	233	148	381
Elizabeth	1,185	410	1,595	540	76	616
Plainfield	278	148	426	41	7	48
<b>Total</b>	<b>16,364</b>	<b>6,141</b>	<b>22,505</b>	<b>2,873</b>	<b>2,300</b>	<b>5,173</b>

Source: NJ Division of Family Development, GA Fiscal Unit