

2009 Fruit Summary

New Jersey

The four major fruit and berry crops grown in New Jersey are apples, blueberries, cranberries, and peaches. The mild 2009 winter limited freeze damage to fruit and berry crops. Pollination for blueberries and apples were hampered by rainfall. Sufficient soil moisture and above normal spring temperatures were beneficial for fruit development. Timely rains throughout the summer months and mild temperatures in the fall all had a different impact on this year's fruit crops.

As the season concluded, apples, cranberries, and peaches had higher production, while blueberries had lower production. Value of utilized production of these crops totaled \$147.6 million, a 3 percent increase from the 2008 total of \$142.7 million. Apples, cranberries, and peaches have contributed to the increase in value.

Four Major Fruits and Berries



Peaches: Growing conditions were favorable for peaches as a combination of sunshine, moderate temperatures, and adequate moisture prevailed throughout the spring. Natural thinning from winter frosts resulted in good sizing of fruit. As the season concluded, overall production was 35,000 tons, up 1,000 tons from a year ago. Peach utilized production totaled 33,000 tons, up 27 percent from 2008. Season average price, at \$1,020 per ton (51.0 cents per pound), was \$100.00 higher than the previous year price. Value of utilized production was \$33.7 million in 2009, 41 percent more than 2008.

Apples: Growing season began favorably for apples in 2009 with mild temperatures and adequate rainfall. Limited pollination and frost during bloom affected crops in some areas. Overall quality, size, and color were good. Total apple production, at 45 million pounds, was 2 million pounds more than the previous year. The season average price, at 40.6 cents per pound, was 2.5 cents more than in 2008. Value of utilized production was \$17.9 million in 2009 compared with \$14.8 million in 2008.

Blueberries: The 2009 blueberry crop's bloom and set of fruit were reported to be average. Blueberry production totaled 53 million pounds, a decrease of 10 percent from the previous year. The season average price, at \$1.23 per pound, is down 16 cents from last year. The value of utilized production for the 2009 blueberry crop was \$65.3 million, a decrease of 20 percent from 2008.

Cranberries: Cranberry total production was 555,000 barrels, up 8 percent from the 512,000 barrels produced in 2008. The season average price was \$55.60 per barrel, up \$3.10 from last year. The value of production for the 2009 cranberry crop was \$30.9 million, up 15 percent from 2008. The cranberry crop's bloom, set of fruit, and fruit size were reported to be average to heavy.

New Jersey Fruit and Berry Production, Utilization, Price and Value, 2007-2009

Crop & Year	Production ¹		Utilized Production		Season Avg. Price Per Unit	Value of Utilized Production
	Total	Utilized	Fresh ²	Processed		
Apples	<i>million lbs</i>				<i>cents per lb</i>	<i>\$1,000</i>
2007	42	42	26	16	22.9	9,609
2008	43	39	25	14	38.1	14,841
2009 ³	45	44	n/a	n/a	40.6	17,857
Blueberries	<i>million lbs</i>				<i>\$ per lb</i>	<i>\$1,000</i>
2007	54	54	41	13	1.67	90,240
2008	59	59	46	13	1.39	81,990
2009	53	53	45	8	1.23	65,260
Cranberries⁴	<i>thousand barrels</i>				<i>\$ per barrel⁵</i>	<i>\$1,000</i>
2007	531	531	-	531	46.10	24,479
2008	512	512	-	512	52.50	26,880
2009	555	555	-	555	55.60	30,858
Peaches⁶	<i>tons</i>				<i>\$ per ton</i>	<i>\$1,000</i>
2007	32,000	28,800	28,800	-	1,140	32,832
2008	34,000	26,000	26,000	-	920	23,920
2009	35,000	33,000	33,000	-	1,020	33,660

Source: USDA - NASS: Noncitrus Fruits & Nuts, January 2010

¹ Difference between total production and that having utilized value is economic abandonment and/or excess cullage of mature fruit.

² Includes quantities used in farm household or given away.

³ Utilized production will be available July 2010.

⁴ Small quantities of fresh cranberries are included in processed to avoid disclosure of individual operations.

⁵ Weighted average of co-op and independent sales. Co-op prices represent pool proceeds less returns for processing non-cranberry products, capital stock dividends, capital stock retains, and other retains.

⁶ Process include in fresh utilization.



2009 Vegetable Growing Season

2009 Vegetable Season:

The mild winter, sufficient moisture and near normal spring temperatures were favorable for the spring vegetables. But some growers were concerned the weak demand would adversely affect the prices. The major vegetables planted acres were lower than a year earlier. Prolonged wet conditions in late spring had adversely impacted the planting of summer crops.

Temperatures were below normal, which slowed the growth of most of the crops. Once entering the summer months, subsoil moistures were varied depending on the localities. Vine crop production in the northeastern and some southern parts of the state was seriously reduced by blights. There were measurable amounts of



rainfall in the fall season and temperatures were generally lower than normal. Harvest of vegetable crops was winding down in the second week of October, a week earlier than usual. Also included in 2009 harvested acres was some preserved land which had never been utilized for growing vegetables. As the season concluded,

production of asparagus, collards, eggplant, lettuce, pumpkins, sweet corn, and tomatoes were higher, while cabbage, cucumbers, kale, bell peppers, snap beans, spinach, summer squash, and winter squash had lower production. Production of escarole and endive were unchanged. Total value of production of principal fresh market and processing vegetables showed a 11 percent increase from a year ago.

Annual Vegetable Report

Vegetables for Fresh Market: There are 16 fresh market vegetables in the USDA-NASS, New Jersey Field Office estimating program. Area harvested for these fresh market vegetables in 2009 totaled 32,600 acres, compared with 32,400 acres in 2008, up 200 acres. Production amounted to 5.1 million hundredweight, a decrease of 3 percent from the 5.3 million hundredweight produced in 2008. Overall yield in 2009 averaged 157 hundredweight per acre, down 5 hundredweight from the previous year. The season average price was \$34.10 per hundredweight compared with \$29.40 in 2008, a sharp increase of \$4.70 per hundredweight.

Among the fresh market vegetables, bell peppers, pumpkins, and snap beans had higher harvested acres in

2009 than in 2008. Spinach, summer squash, and winter squash had lower harvested acres in 2009 than in 2008. Asparagus, cabbage, collards, cucumbers, eggplant, escarole/endive, kale, lettuce, sweet corn, and tomato acres remained the same. Despite the lower production level, the much higher season average price was enough to offset the decline of production. The value of production showed an increase of \$20.2 million to a total of \$175.0 million.

Ranking New Jersey's fresh market vegetables by value of production, tomatoes were first with \$33.9 million, and bell peppers were second with \$31.4 million. Sweet corn, lettuce, and cucumbers were third, fourth, and fifth with \$22.8 million, \$13.8 million, and \$11.3 million, respectively.

Vegetables for Processing:

Harvested acreage in 2009 of major processing vegetables totaled 5,300 acres, compared with 6,050 acres harvested in 2008. Harvested acres increased for green peas, sweet corn, and tomatoes, while snap bean acres declined. Spinach acres remained the same. Carrots and cucumber for pickles were no longer in the estimate program. Total production, at 50,790 tons, was a 14 percent decrease from the 58,740 tons in 2008. The 2009 value of production, at \$8.37 million, was up \$1.5 million from \$6.9 million a year earlier for comparable vegetables.

Parsley and Herbs: These two items were added in USDA-NASS, N.J. Field Office estimating program starting 2009. Results from the 2009 survey will be released in spring 2011 along with the results from the 2010 survey.



New Jersey Vegetables Annual Summary, 2008 & 2009¹

Crop	Acres Harvested		Yield Per Acre		Production		Season Avg. Price		Value of Production	
	2008	2009	2008	2009	2008	2009	2008	2009	2008	2009
<i>Vegetables for Fresh Market</i>	<i>acres</i>		<i>cwt</i>		<i>1,000 cwt</i>		<i>\$ per cwt</i>		<i>\$1,000</i>	
Asparagus ²	1,000	1,000	34	37	34	37	130.00	97.30	4,420	3,600
Cabbage	1,600	1,600	360	345	576	552	13.50	15.90	7,776	8,777
Collards ²	800	800	135	165	108	132	24.40	30.90	2,635	4,079
Cucumbers	3,100	3,100	175	130	543	403	24.10	28.00	13,086	11,284
Eggplant ²	900	900	290	320	261	288	27.30	29.00	7,125	8,352
Escarole & Endive ²	500	500	185	185	93	93	28.30	35.40	2,632	3,292
Kale ²	400	400	145	120	58	48	26.30	34.10	1,525	1,637
Lettuce, All ^{2,3}	1,800	1,800	195	200	351	360	21.70	38.30	7,617	13,788
Peppers, Bell	3,100	3,200	360	290	1116	928	29.50	33.80	32,922	31,366
Pumpkins ²	2,100	2,200	105	115	221	253	23.80	29.20	5,260	7,388
Snap Beans	2,500	2,800	38	27	95	76	45.00	67.40	4,275	5,122
Spinach	1,600	1,500	175	135	280	203	37.20	43.20	10,416	8,770
Squash, Summer ²	2,000	1,900	140	135	280	257	37.40	33.40	10,472	8,584
Squash, Winter ²	1,000	900	80	75	80	68	25.70	26.70	2,056	1,816
Sweet Corn	7,100	7,100	75	110	533	781	29.10	29.20	15,510	22,805
Tomatoes	2,900	2,900	215	220	624	638	42.70	53.20	26,645	33,942
Total	32,400	32,600	162	157	5,253	5,117	29.40	34.10	154,372	174,602
<i>Vegetables for Processing⁴</i>	<i>acres</i>		<i>tons</i>				<i>\$ per ton</i>		<i>\$1,000</i>	
Total ^{5,6}	6,000	5,300	9.79	9.58	58,740	50,790	192.00	164.70	11,279	8,366
Total Principal Vegetables	38,400	37,900	8.37	8.09	321,390	306,640	515.40	596.70	165,651	182,968

Source: USDA - NASS: New Jersey Annual Vegetable Report, January 2010

¹ Preliminary.² Not in the Federal Estimating Program, state estimate only.³ Includes head lettuce and all other lettuce.⁴ Not published separately to avoid disclosing individual operations.⁵ Carrots, cucumbers and tomatoes are not in the Federal Estimating Program.⁶ 2008 - carrots, cucumbers for pickles, green peas, snap beans, spinach, sweet corn, and tomatoes.

2009 - green peas, snap beans, spinach, sweet corn, and tomatoes.

New Jersey Farm and Ranch Irrigation



New Jersey - The **Farm and Ranch Irrigation Survey** shows that NJ farmers and ranchers are irrigating 59,412 acres of farmland, 12,733 more than in 2003. Producers applied a total of 45,305 acre-feet of water. Farms with horticulture and research farms are excluded from this data.

The primary methods of irrigation were sprinkler systems. Energy costs for on-farm pumping totaled to \$4.29 million. Diesel fuel was the leading energy source accounting for 82 percent of the total energy costs.

Farmer and ranchers spent \$7.79 million on expenses related to irrigation equipment, facilities, land improvements, and computer technology.

United States - The **Farm and Ranch Irrigation Survey** has found that farmers and ranches are now irrigating 54.9 million acres of farmland across the United States, an increase of nearly 5 percent since 2003.

The study shows a continuing trend towards more efficient irrigation methods as farmers reported irrigating more acres with sprinkler systems and less with gravity irrigation. During the five-year period since the last Irrigation Survey, the area irrigated by sprinkler systems increased 15 percent while the area with gravity irrigation decreased 5 percent.

In 2008, farmers and ranchers spent \$2.1 billion on expenses related to irrigation equipment, facilities, land improvements and computer technology.

FOR MORE
INFORMATION,
VISIT OUR
WEBSITE AT

www.agcensus.usda.gov

New Jersey Quick Facts

Farms with Irrigation	608
Acres Irrigated	59,412
Acre-Feet Applied	45,305
Avg. Acre-Feet per acre	0.8
Primary Method Used	Sprinkler Systems
Avg. Well Depth ¹	120 ft.
Avg. Depth to Water	20 ft.
Total Energy Costs ² (Pumping)	\$4.29 million
Total Irrigation Expenditures	\$7.79 million

¹ Flowing or artesian wells are not included.

² No energy expenses for solar-powered pumps or other renewable sources are included.

Source: USDA - NASS: 2007 Census of Agriculture

New Jersey Organic Farming, 2009

The USDA's first wide-scale survey of organic producers counted 122 certified or exempt farms and ranches in New Jersey, comprising 3,329 acres of land. Sales from organic products totaled to \$2.60 million. Organic farms had average annual sales of \$22,051. Most sales were

on-site (e.g., farm stand, u-pick). Production expenses totaled to \$3.81 million with hired labor and property taxes accounting for 45 percent of total expenses.

New Jersey Quick Facts	
<p>Acreage 3,329 organic acres 2,725 cropland acres 1,832 harvested cropland acres 604 pasture/rangeland acres</p> <p>Sales \$2.60 million total value of sales Top sales categories: Vegetables¹ = 53% of all sales (\$1.38 million) Berries = 20% of all sales (\$513,794)</p>	<p>Production Practices Most popular uses Green or animal manure Organic mulch or compost Planting locations to avoid pests</p> <p>Production Expenses \$3.81 million total production expenses Top expenses Labor (\$1.32 million) Property Taxes (\$405,000)</p>

FOR MORE
INFORMATION,
VISIT OUR
WEBSITE AT

¹ Includes vegetables, potatoes, and melons.

Source: USDA - NASS: 2007 Census of Agriculture

www.agcensus.usda.gov

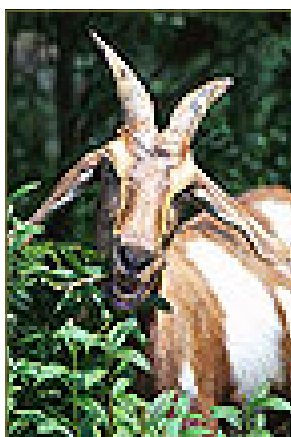
Milk & Meat Goats

New Jersey - On January 1, 2010, **milk goats** totaled 2,000 head, an increase of 300 head from the previous year.

Meat and other goats totaled 7,200 head, a decrease of 800 head from January 2009.

United States - The milk goat inventory increased 6.0 percent from the previous year to 355,000 head. The meat goat inventory at 2.54 million head decreased by 11,000 head.

Milk & Meat Goats: Selected States & United States, 2009-2010



State	Milk Goats		Meat Goats	
	2009	2010	2009	2010
	<i>Head</i>			
Maryland	2,800	2,400	13,600	12,500
New Jersey	1,700	2,000	8,000	7,200
New York	13,400	13,000	27,000	35,000
Pennsylvania	14,500	17,000	42,000	42,000
United States	335,000	355,000	2,549,000	2,538,000

Source: USDA - NASS: Sheep & Goats, January 2010

January Farm Prices Received Index Up 2 Percent

The preliminary All Farm Products Index of Prices Received by Farmers in January, at 137 percent, based on 1990-92=100, increased 2 points (1.5 percent) from December.

The Crop Index is unchanged but the Livestock Index increased 4 points (3.4 percent). Producers received higher prices for broilers, cattle, hogs, and apples and lower prices for lettuce, corn, broccoli, and soybeans. In addition to prices, the overall index is also affected by the seasonal change based on a 3-year average mix of commodities producers sell. Increased monthly marketings of corn, soybeans, wheat, and rice offset decreased marketings of milk, broilers, cotton, and grapes.

The preliminary All Farm Products Index is down 2 points (1.4 percent) from January 2009. The Food Commodities Index, at 137, increased 2 points (1.5 percent) from last month and increased 3 points (2.2 percent) from January 2009.

January Prices Paid Index Up 2 Percent

The January Index of Prices Paid for Commodities and Services, Interest, Taxes, and Farm Wage Rates (PPITW) is 183 percent of the 1990-92 average. The index is up 4 points (2.2 percent) from December and 3 points (1.7 percent) above January 2009. Higher prices for taxes, cash rent, other services, and diesel more than offset lower prices in January for interest, feed grains, concentrates, and mixed fertilizer.

Average Prices Received by Farmers: United States

Item	Entire Month		Preliminary
	Jan 2009	Dec 2010	Jan 2010
<i>\$dollars</i>			
Field Crops			
Corn, per bushel	4.36	3.59	3.45
Hay, all, baled, per ton ¹	135.00	107.00	109.00
Alfalfa ¹	148.00	110.00	113.00
Other ¹	110.00	98.90	99.60
Soybeans, per bushel	9.97	9.80	9.49
Winter Wheat, per bushel	5.70	4.68	4.54
Fruit, Fresh			
Apples, per lb ²	0.272	0.272	0.296
Peaches, per ton ²	(7)	(7)	(7)
Vegetables, Fresh			
Corn, Sweet, per cwt	24.90	19.40	33.10
Lettuce, per cwt	28.50	38.70	16.40
Tomatoes, per cwt	29.30	65.00	57.60
Livestock and Livestock Products			
Beef Cattle, per cwt	80.10	78.60	81.90
Steers and Heifers, per cwt	85.80	83.80	87.00
Cows, per cwt ³	42.30	43.50	47.10
Calves, per cwt	106.00	105.00	109.00
Broilers, live, per lb ⁴	0.480	0.420	0.480
Eggs, all, per dozen ¹	1.030	1.050	1.030
Milk, all, per cwt ^{5,6}	13.30	16.50	16.50

Source: USDA - NASS: Agricultural Prices, January 2010

- ¹ Mid-Month Price
- ² Equivalent packinghouse-door returns for CA, MI, NY, and WA. Prices as sold for other states.
- ³ Beef cows and cull dairy cows sold for slaughter.
- ⁴ Equivalent live weight price.
- ⁵ Before deductions for hauling. Includes quality, quantity, and other premiums. Excludes hauling subsidies.
- ⁶ January 2010 Fat Test percent: All Milk 3.78, fluid milk 3.77, and mfg grade 4.15.
- ⁷ Insufficient sales to establish a price.



To obtain other agricultural statistics, visit the New Jersey Field Office at www.nass.usda.gov/nj/ or call us at 1-800-328-0179



USDA, NASS
New Jersey Field Office
Rm. 205 Health and Agriculture Bldg.
P.O. Box 330
Trenton, NJ 08625
OFFICIAL BUSINESS
PENALTY FOR PRIVATE USE \$300