



State of New Jersey

80-6212-903

Camden Academy Charter HS
879 BEIDEMAN AVENUE
CAMDEN, NJ 08105

OVERVIEW

CHARTERS

Camden Academy Charter HS

GRADE SPAN 09-12

This school's academic performance **lags in comparison** to schools across the state. Additionally, its academic performance is **high when compared** to its peers. This school's college and career readiness is **about average when compared** to schools across the state. Additionally, its college and career readiness is **very high when compared** to its peers. This school's graduation and post-secondary performance is **very high when compared** to schools across the state. Additionally, its graduation and post-secondary readiness is **very high when compared** to its peers.

Performance Areas	Peer Rank (Percentile)	Statewide Rank (Percentile)	Percent of Targets Met
Academic Achievement	65	25	100%
College & Career Readiness	81	52	40%
Graduation and Post-Secondary	87	87	100%

Improvement Status

N/A

Rationale

N/A

Very High Performance is defined as being equal to or above the 80.0th percentile.

High Performance is defined as being between the 60.0th and 79.9th percentiles.

Average Performance is defined as being between the 40.0th and 59.9th percentiles.

Lagging Performance is defined as being between the 20.0th and 39.9th percentiles.

Significantly Lagging Performance is defined as being equal to or below the 19.9th percentile.

Peer Schools are schools that have similar grade levels and students with similar demographic characteristics, such as the percentage of students qualifying for Free/Reduced Lunch, Limited English Proficiency programs or Special Education programs.

Academic Achievement

This school outperforms **25%** of schools statewide as noted by its statewide percentile ranking and **65%** of schools educating students with similar demographic characteristics as noted in its peer school percentile ranking in the performance area of Academic Achievement.



Additionally, this school is meeting **100%** of its performance targets in the area of Academic Achievement.

Academic Achievement measures the content knowledge students have in language arts literacy and math. For high schools, this includes measures of the school's proficiency rate on both the Language Arts Literacy and Math sections of the New Jersey High School Proficiency Assessment (HSPA). A proficiency rate is calculated by summing the count of students who scored either proficient or advanced proficient on the assessment and dividing by the count of valid test scores.

College and Career Readiness

This school outperforms **52%** of schools statewide as noted by its statewide percentile ranking and **81%** of schools educating students with similar demographic characteristics as noted in its peer school percentile ranking in the performance area of College and Career Readiness. Additionally, this school is meeting **40%** of its performance targets in the area of College and Career Readiness.



College and Career Readiness measures the degree to which students are demonstrating behaviors that are indicative of future attendance and/or success in college and careers. For high schools, this includes measures of participation in college readiness tests such as the SAT or PSAT and in rigorous coursework as defined by participation in AP courses in English, math, social studies and science.

Graduation and Post-Secondary

This school outperforms **87%** of schools statewide as noted by its statewide percentile ranking and **87%** of schools educating students with similar demographic characteristics as noted in its peer school percentile ranking in the performance area of Graduation and Post-Secondary. Additionally, this school is meeting **100%** of its performance targets in the area of Graduation and Post-Secondary.



Graduation and Post-Secondary measures the rate at which students who begin high school four years earlier graduate within four years. Also included is a measure of the rate at which students in a particular school drop out of school.



State of New Jersey

80-6212-903

Camden Academy Charter HS
879 BEIDEMAN AVENUE
CAMDEN, NJ 08105

DEMOGRAPHIC INFORMATION

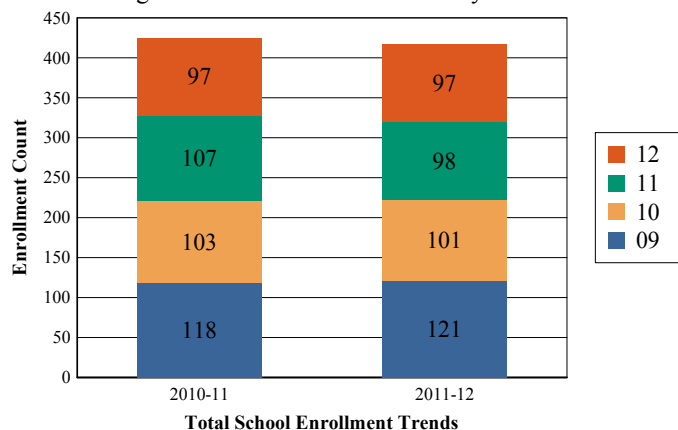
CHARTERS

Camden Academy Charter HS

GRADE SPAN 09-12

Enrollment by Grade

This graph presents the count of students who were 'on roll' by grade in October of each school year.



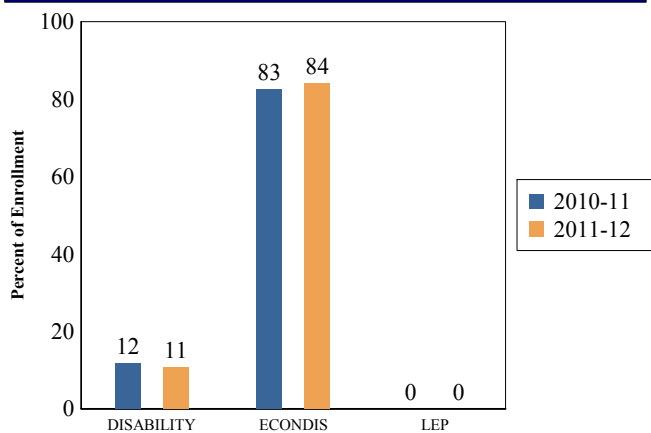
Total School Enrollment Trends

Note: "UG" represents the count of students who are 'on roll' in this school but who are educated in ungraded classrooms, meaning that the classrooms may contain students from multiple grade levels.

Total School Enrollment

2010-11	425
2011-12	417

Enrollment Trends by Program Participation



Current Year Enrollment by Program Participation

2011-2012	Count of Students	% of Enrollment
Students with Disability	45	11%
Economically Disadvantaged Students	351	84.2%
Limited English Proficient Students	0	0.0%

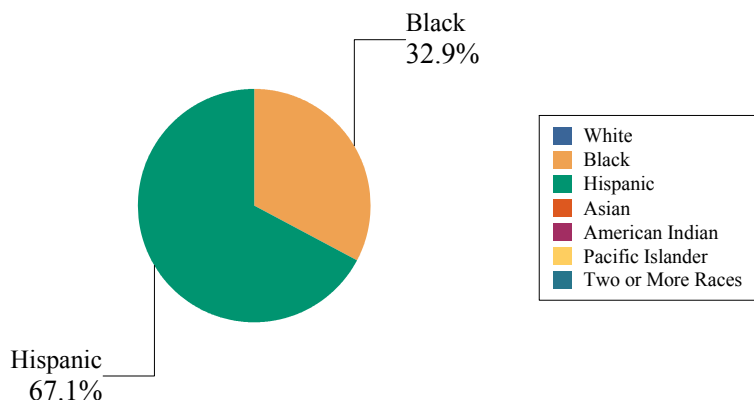
Language Diversity

This table presents the percentage of students who primarily speak each language in their home.

2011-12	Percent
English	80.0%
Spanish	20.0%

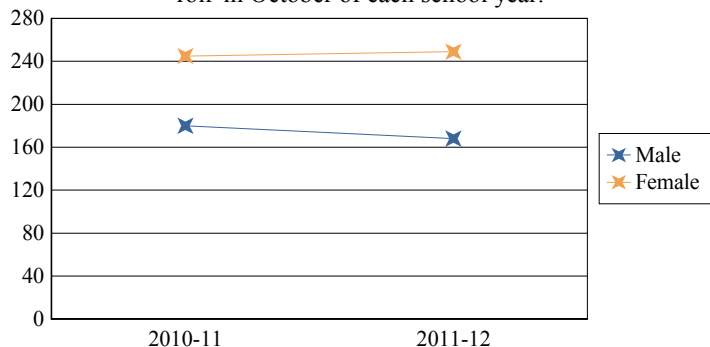
Enrollment by Ethnic/Racial Subgroup

This graph presents the percentages of enrollment for each subgroup defined by the No Child Left Behind Act of 2001



Enrollment by Gender

This graph presents the count of students by gender who were 'on roll' in October of each school year.



	Male	Female
2010-11	180	245
2011-12	168	249



State of New Jersey

80-6212-903

ACADEMIC ACHIEVEMENT CHARTERS

Camden Academy Charter HS

GRADE SPAN 09-12

Camden Academy Charter HS
879 BEIDEMAN AVENUE
CAMDEN, NJ 08105

Academic Achievement measures the content knowledge students have in Language Arts Literacy and Math. In high schools, this includes the outcomes of the New Jersey High School Proficiency Assessment (HSPA). The first column - Schoolwide Performance - in the table below includes measures of the total schoolwide proficiency rate in both Language Arts Literacy and Math across multiple administrations of the assessment. The second column - Peer School Percentile Rank - indicates where the school's proficiency rate compares to its group of peer schools. For example, a school that has a peer school percentile rank of 65 has a proficiency rate that is higher than 65% of its peer schools. The third column - Statewide Percentile Rank - indicates where the school's proficiency rate compares to schools across the state. For example, a school that has a statewide percentile rank of 30 has a proficiency rate that is higher than 30% of all schools with HSPA scores statewide. The last column - Percent of Targets Met - presents the percentage of progress targets met as defined by the NJDOE's NCLB waiver.

The Summary row presents the averages of the peer school percentile ranks, the average of statewide percentile ranks and the percentage of statewide targets met.

Academic Achievement Indicators	Schoolwide Performance	Peer Rank (Percentile)	State Rank (Percentile)	Percent of Targets Met
HSPA Language Arts Proficiency and above	92.4%	71	33	100%
HSPA Math Proficiency and above	65.8%	58	16	100%
SUMMARY - Academic Achievement		65	25	100%

NCLB Progress Targets - Language Arts Literacy

This table presents the Progress Targets as uniquely calculated for each subgroup in each school under NJDOE's NCLB waiver. The methodology - as defined by the United States Department of Education - is calculated so that each subgroup will halve the gap between their 2011 proficiency rate and 100% proficiency by 2017.

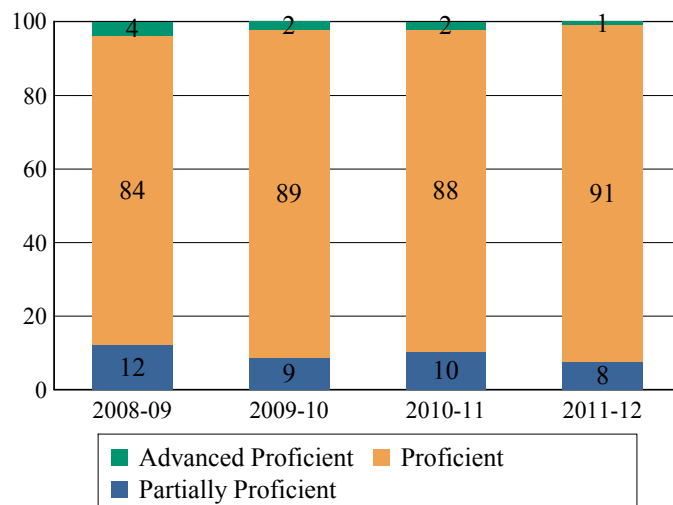
Subgroups	Total Valid Scores	Pass Rate	Target	Met Target?
Schoolwide	105	92.4	90	YES
White	-	-	-	--
Black	48	85.4	-	--
Hispanic	57	98.2	88.4	YES
American Indian	-	-	-	--
Asian	-	-	-	--
Two or More Races	-	-	-	--
Limited English Proficient Students	-	-	-	--
Economically Disadvantaged Students	91	91.2	89	YES
Students with Disability	-	-	-	--

YES* = Met Progress Target (Confidence Interval Applied)

Data is presented for subgroups when the count is high enough under NCLB suppression rules.

Proficiency Trends - Language Arts Literacy

This graph presents the percentage of students who scored in the Advanced Proficient, Proficient and Partially Proficient categories of the statewide Language Arts Literacy assessment over the prior four years.



ACADEMIC ACHIEVEMENT

CHARTERS

Camden Academy Charter HS

GRADE SPAN 09-12

80-6212-903

Camden Academy Charter HS

879 BEIDEMAN AVENUE

CAMDEN, NJ 08105

NCLB Progress Targets - Math

This table presents the Progress Targets as uniquely calculated for each subgroup in each school under NJDOE's NCLB waiver. The methodology - as defined by the United States Department of Education - is calculated so that each subgroup will halve the gap between their 2011 proficiency rate and 100% proficiency by 2017.

Subgroups	Total Valid Scores	Pass Rate	Target	Met Target?
Schoolwide	105	65.8	66.6	YES*
White	-	-	-	--
Black	48	62.5	-	--
Hispanic	57	68.4	70.3	YES*
American Indian	-	-	-	--
Asian	-	-	-	--
Two or More Races	-	-	-	--
Limited English Proficient Students	-	-	-	--
Economically Disadvantaged Students	91	62.6	64	YES*
Students with Disability	-	-	-	--

YES* = Met Progress Target(Confidence Interval Applied)

Data is presented for subgroups when the count is high enough under NCLB suppression rules.

Proficiency Outcomes - Biology

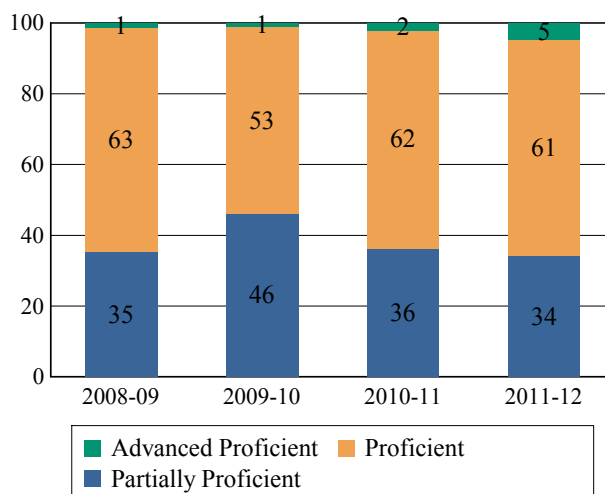
This table presents the percentage of students who scored in the Advanced Proficient, Proficient and Partially Proficient categories of the New Jersey Biology Competency Test (NJBCCT) in the latest school year.

Subgroups	Advanced	Proficient	Partially Proficient
Schoolwide	1%	49%	49%
White	N/A	N/A	N/A
Black	-	-	-
Hispanic	0%	47%	53%
American Indian	N/A	N/A	N/A
Asian	N/A	N/A	N/A
Two or More Races	N/A	N/A	N/A
Students with Disability	-	-	-
Limited English Proficient Students	N/A	N/A	N/A
Economically Disadvantaged Students	1%	46%	53%

Data is presented for subgroups when the count is high enough under NCLB suppression rules.

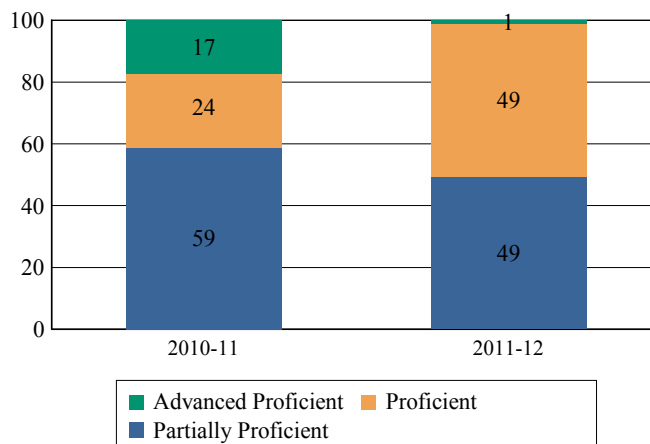
Proficiency Trends - Math

This graph presents the percentage of students who scored in the Advanced Proficient, Proficient and Partially Proficient categories of the statewide Math assessment over the prior four years.



Proficiency Trends - Biology

This graph presents the percentage of students who scored in the Advanced Proficient, Proficient, and Partially Proficient categories of the Biology Competency Test over the last two years.





State of New Jersey

80-6212-903

COLLEGE AND CAREER READINESS

CHARTERS

Camden Academy Charter HS

GRADE SPAN 09-12

Camden Academy Charter HS

879 BEIDEMAN AVENUE

CAMDEN, NJ 08105

Students in high schools begin to demonstrate college readiness behaviors long before they actually graduate from high school. Among those behaviors are taking college entrance exams and challenging themselves with rigorous course work. The table below presents five such indicators: the percentage of students enrolled in the 12th grade who took the SAT, the percentage of 10th and 11th graders who took the PSAT, the percentage of students who scored above the SAT benchmark of 1550, the percentage of 11th and 12th graders who took at least one AP test in English, math, social studies or science, and the percentage of those AP tests that were scored a 3 or higher.

The first column - Schoolwide Performance - represents the outcomes for these particular indicators in the school. The second column - Peer School Percentile Rank - indicates how the school's performance compares to its group of peer schools. For example, a school whose peer school rank is 65 in SAT participation has a higher SAT Participation than 65% of its peer group. The third column - Statewide Percentile Rank - indicates how the school's performance compares to schools across the state. The fourth column - Statewide Target - provides the statewide targets for each of these indicators. The last column - Met Target? - indicates whether the School Performance met or exceeded the statewide target.

The Summary row presents the averages of the peer school percentile ranks, the average of statewide percentile ranks and the percentage of statewide targets met.

College and Career Readiness Indicators	Schoolwide Performance	Peer Rank (Percentile)	Statewide Rank (Percentile)	Statewide Target	Met Target?
% of Students Participating in SAT	98%	93	94	80%	YES
% of Students Participating in PSAT	93%	90	84	60%	YES
% of Students Scoring Above 1550 on SAT	6%	63	14	40%	NO
% of Students Taking at least one AP Test in English, Math, Social Studies or Science	13%	60	39	35%	NO
% of AP Tests in English, Math, Social Studies or Science with Score 3 or Greater	19%	73	20	75%	NO
Summary		76	50		40%

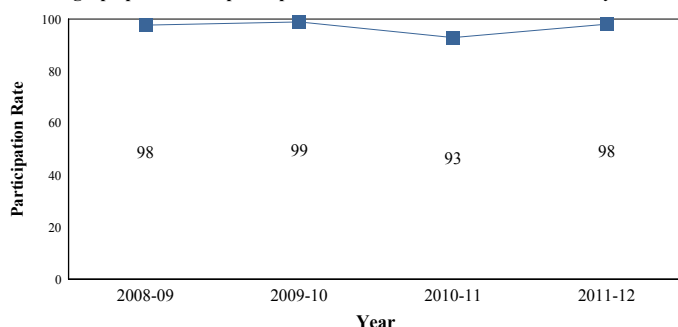
College Readiness Test Participation

The first column of the table below presents the percentage of students enrolled in the 12th grade who took the SAT and the percentage of students enrolled in 10th and 11th grade who took the PSAT. The second column provides the average across the school's peer group for these two metrics.

2011-12 % of Students	School	Peer Avg.	State Avg.
Participating in SAT	97.9%	59.7%	74.4%
Participating in PSAT	93.0%	60.3%	52.8%

Participation Trends - SAT Testing

This graph presents the participation rate in the SAT over the last four years.



AP Participation - 'Unique' Students

The table below presents the proportion of 'unique' students enrolled in at least 11th and 12th grade i.e, each student is counted once regardless of how many AP courses he/she may take. The table also presents the proportion of how many 'unique' students took at least one AP test to the school's enrollment in 11th and 12th grade.

2011-12 % of Students Taking	School	Peer Avg.	State Avg.
One or More Course	24.1%	16.0%	29.7%
One or More Test	18.5%	14.6%	24.0%
At least one AP Test in English, Math, Social Studies or Science	13.3%	10.5%	18.7%

Note: Students who are enrolled in AP coursework or take AP tests in grades other than 11th and 12th are included in the numerator of this calculation.

Advanced Placement (AP) Test Results

This table presents the percentage of all AP tests taken by students enrolled in the school that were scored as 3 or Greater.

2011-12 % of AP Tests	School	Peer Avg.	State Avg.
Scored 3 or Greater	25.0%	30.4%	75.1%
Scored 3 or Greater in English, Math, Social Studies or Science	19.2%	16.6%	74.5%



State of New Jersey

80-6212-903

Camden Academy Charter HS
879 BEIDEMAN AVENUE
CAMDEN, NJ 08105

COLLEGE AND CAREER READINESS

CHARTERS

Camden Academy Charter HS

GRADE SPAN 09-12

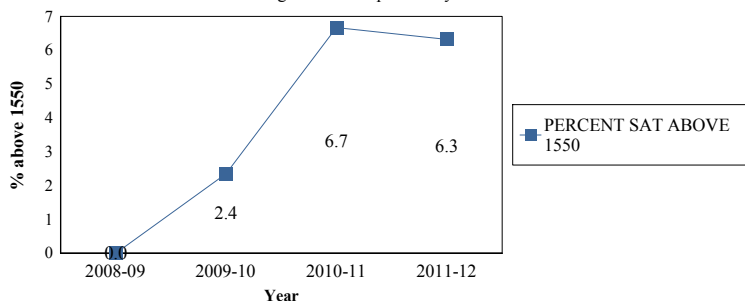
Scholastic Assessment Test (SAT) Results

This table presents the percentage of students who achieved a composite SAT score of 1550 or higher. The SAT benchmark score of 1550 (Critical Reading, Mathematics and Writing Score combined) indicates a 65 percent likelihood of achieving a B- average or higher during the first year of college, which in turn has been found by the College Board's research to be indicative of a high likelihood of college success and completion.

2011-12	School	Peer Avg.	State Avg.
% of Students Scoring Above 1550 on SAT	6%	6%	43%

SAT Benchmark Trends

This chart presents the percentage of students who achieved a composite SAT score of 1550 or higher over the past four years.



Composite SAT Score

This chart presents the average composite SAT score from the last academic year for students enrolled in this school as well as the average scores achieved in Critical Reading, Mathematics and Writing. The averages from this school's peer group are also presented.

2011-12	School	Peer Avg.	State Avg.
Composite SAT Score	1,157.0	1,162	1,504
Critical Reading	381.7	381	492
Mathematics	385.6	399	517
Writing	389.2	382	496

This chart presents the scores achieved in Critical Reading, Mathematics and Writing by the students at the 25th percentile, the 50th percentile and the 75th percentile of the school's distribution of SAT scores.

2011-12	Critical Reading	Mathematics	Writing
75th Percentile	440.0	450.0	440.0
50th Percentile	370.0	400.0	380.0
25th Percentile	310.0	325.0	335.0

AP Courses Offered

This table presents the count of students enrolled in each AP course offered in this school in the first column. The second column presents the count of tests taken in each AP course. The numbers may not match as some students do not take the test in the same year as they take the course and some students may take the course without taking the test or vice versa.

AP Course Name	Students Enrolled	Students Tested
AP Calculus AB	23	8
AP English Literature and Composition	16	17
AP Environmental Science	9	9
AP English Language and Composition	7	7
AP Spanish Language	7	7
AP Studio Art—Drawing Portfolio	5	1

GRADUATION AND POST-SECONDARY
CHARTERS

Camden Academy Charter HS
879 BEIDEMAN AVENUE
CAMDEN, NJ 08105

Camden Academy Charter HS
GRADE SPAN 09-12

This section of the performance report presents data about graduation, dropout and post-secondary attendance. The graduation rate is calculated according to the NCLB Cohort methodology as required by the United States Department of Education. Dropout rates are calculated from student-level data submitted by districts for students officially classified as dropouts. The graduation rate plus the dropout rate will likely not total to 100% due to some students who are continuing past the 4th year of enrollment to complete graduation requirements.

The first column - Schoolwide Performance - represents the outcomes for these particular indicators in this school. The second column - Peer School Percentile Rank - indicates how the school's performance compares to its group of peer schools. For example, a school whose peer school rank is 65 in Graduation Rate has a higher Graduation Rate than 65% of its peer group. The third column - Statewide Percentile Rank - indicates how the school's performance compares to schools across the state. The fourth column - Statewide Target - provides the statewide targets for each of these indicators. The Statewide Target for Graduation Rate was established pursuant to NJDOE's NCLB Accountability Workbook. The last column - Met Target - indicates whether the School Performance met or exceeded the statewide target.

The Summary row presents the averages of the peer school percentile ranks, the average of statewide percentile ranks and the percentage of statewide targets met.

Graduation & Post Secondary Indicators	Schoolwide Performance	Peer Rank (Percentile)	Statewide Rank (Percentile)	Statewide Targets	Met Target
Overall Graduation Rate	95.7%	74	73	75%	YES
Dropout Rate	0.0%	100	100	2%	YES
SUMMARY - Graduation & Post-Secondary		87	87		100%

Graduation Rate by Subgroup

This table presents for all NCLB-identified subgroups the "4-year Adjusted Graduation Rate." This rate calculates the percentage of students who are awarded a regular, high school diploma within four years of becoming a first-time ninth grader. The rate is adjusted to account for students who 'transfer-in' and for students who are verified as 'transfers-out'.

	School	State Target
Schoolwide	96%	75%
White	N/A	
Black	92.3%	
Hispanic	98.1%	
American Indian	N/A	
Asian	N/A	
Native Hawaiian	N/A	
Two or More Races	N/A	
Students with Disability	90%	
Limited English Proficient Students	N/A	
Economically Disadvantaged Students	96.3%	

Dropout Rate by Subgroup

This table presents for all NCLB-identified subgroups the Dropout rate. This rate calculates the percentage of students who are classified as dropouts who were identified four years earlier as first-time ninth graders. The rate is adjusted to account for students who 'transfer-in' and for students who are verified as 'transfers-out'.

	School	State Target
Schoolwide	0%	2%
White	N/A	
Black	0%	
Hispanic	0%	
American Indian	N/A	
Asian	N/A	
Native Hawaiian	N/A	
Two or More Races	N/A	
Students with Disability	0%	
Limited English Proficient Students	N/A	
Economically Disadvantaged Students	0%	

GRADUATION AND POST-SECONDARY CHARTERS

Camden Academy Charter HS

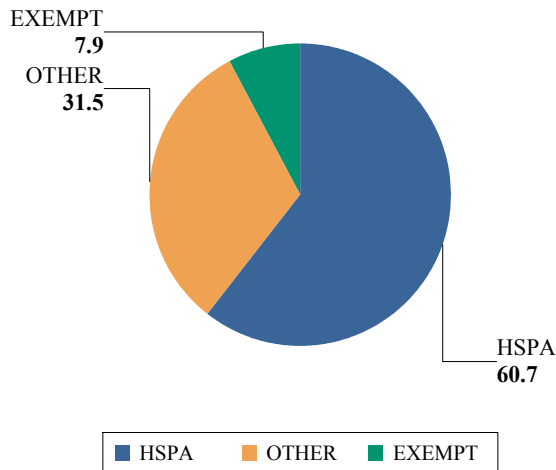
GRADE SPAN 09-12

80-6212-903

Camden Academy Charter HS
879 BEIDEMAN AVENUE
CAMDEN, NJ 08105

Graduation Pathway Rates

This chart presents the percentage of high school graduates who graduated by passing both sections of the HSPA, who were exempt from passing the HSPA, or who demonstrated proficiency through an alternative pathway such as through the Alternative High School Assessment, achievement of the 'Just Proficient Mean' or an appeal process.



Extended Year Graduation Rate

The chart below presents the 4-year and 5-year graduation rate for the prior school year's cohort in addition to the 4-year graduation rate for last year's cohort.

Class of	4-year Rate	5-year Rate
2011		
2012		

Post-Secondary Enrollment Rates

This chart presents the enrollment rates of this school's high school graduates, 16-months after high school graduation. The data is from the National Student Clearinghouse which reports that it collects student-level enrollment data from 95% of Institutions of Higher Education nationwide.

	School
Schoolwide	67%
White	N/A
Black	60%
Hispanic	70%
American Indian	N/A
Asian	N/A
Native Hawaiian	N/A
Two or More Races	N/A
Students with Disability	55.6%
Limited English Proficient Students	N/A
Economically Disadvantaged Students	50%



State of New Jersey

80-6212-903

WITHIN SCHOOL ACHIEVEMENT GAP

CHARTERS

Camden Academy Charter HS

GRADE SPAN 09-12

Camden Academy Charter HS

879 BEIDEMAN AVENUE

CAMDEN, NJ 08105

This section of the performance report presents data about the achievement gap that exists within a school - as measured by the difference between the students' scale scores at the 25th and 75th percentile in the school, the so-called Interquartile Range (IQR). Taken together with an understanding of the overall and average achievement levels in the school, the IQR furthers an understanding of the range of student outcomes that exist in a school. A school gap smaller than the state gap indicates that the school's range of student outcomes is narrower than the state's while a school gap larger than the state gap indicates that the school's range of student outcomes is larger than the state's.

High School

HSPA Language Arts 25th %ile vs 75th%ile

This table presents the scale scores associated with students at the bottom (0th percentile), the 25th percentile, the 50th percentile, the 75th percentile and the top (99th percentile) of school's distribution

Percentile	Scale Score
99th	248
75th	232
50th	222
25th	210
0th	154

Scale Score Gap
- School

Scale Score Gap
- State

25th vs 75th Gap

22

28

Grade Level - 11

HSPA Math 25th %ile vs 75th%ile

This table presents the scale scores associated with students at the bottom (0th percentile), the 25th percentile, the 50th percentile, the 75th percentile and the top (99th percentile) of school's distribution

Percentile	Scale Score
99th	256
75th	221
50th	206
25th	182
0th	142

Scale Score Gap
- School

Scale Score Gap
- State

25th vs 75th Gap

40

44



State of New Jersey

80-6212-903

Camden Academy Charter HS
879 BEIDEMAN AVENUE
CAMDEN, NJ 08105

SCHOOL CLIMATE

CHARTERS

Camden Academy Charter HS

GRADE SPAN 09-12

Length of School Day

This table presents the amount of time a school is in session for a typical student on a normal school day.

	School
2011-12	8 Hrs 0 Mins

Instructional Time

This table presents the amount of time that a typical student is engaged in instructional activities under the supervision of a certified teacher.

2011-12	School
Full Time	7 Hrs 0 Mins.
Shared Time	0 Hrs. 0 Mins.

Student Suspension Rate

This table presents the percentage of students who were suspended one or more times during the school year.

	School
2011-12	25.7%

Student Expulsions

This table presents the number of students who were expelled from the school and district during the school year.

	School
2011-12	0

Student to Staff Ratio

This table presents the count of students per faculty member or administrator in the school. All staff are counted in full-time equivalents.

2011-12	School
Faculty	9.7
Administrators	166.8

SCHOOL PEER GROUP**Camden Academy Charter HS****80-6212-903**

This table presents the list of peer schools in alphabetical order by county name that was created specifically for this school (highlighted in yellow). Peer schools are drawn from across the state and represent schools that have similar grade configurations and that are educating students of similar demographic characteristics, as measured by enrollment in Free/Reduced Lunch Programs, Limited English Proficiency or Special Education Programs.

<u>COUNTY NAME</u>	<u>DISTRICT NAME</u>	<u>SCHOOL NAME</u>	<u>CDS CODE</u>	<u>GRADE SPAN</u>	<u>FRPL</u>	<u>LEP</u>	<u>SpED</u>
ATLANTIC	PLEASANTVILLE CITY	PLEASANTVILLE H S	01-4180-050	09-12	91.7%	0.0%	17.4%
BERGEN	GARFIELD CITY	GARFIELD HIGH	03-1700-050	09-12	75.6%	4.8%	13.9%
CAMDEN	CAMDEN CITY	CAMDEN HIGH	07-0680-030	09-12	72.5%	0.1%	38.1%
CAMDEN	CAMDEN CITY	MET EAST HIGH SCHOOL	07-0680-305	09-12	76.7%	0.0%	6.0%
CHARTERS	CAMDEN ACADEMY CHARTER HS	CAMDEN ACADEMY CHARTER HS	80-6212-903	09-12	84.3%	0.0%	10.3%
CHARTERS	LEAP ACADEMY UNIVERSITY CS	LEAP ACADEMY UNIVERSITY CS	80-7109-931	KG-12	89.3%	3.6%	6.2%
CHARTERS	NORTH STAR ACAD. CS OF NEWARK	NORTH STAR ACAD CS OF NEWARK	80-7320-960	KG-12	80.3%	0.0%	7.4%
CHARTERS	TEAM ACADEMY CHARTER SCHOOL	TEAM ACADEMY CHARTER SCHOOL	80-7325-965	KG-12	87.8%	0.0%	12.8%
CHARTERS	UNIVERSITY ACADEMY CS	UNIVERSITY ACADEMY CS	80-8060-990	09-12	73.5%	0.0%	13.3%
CUMBERLAND	BRIDGETON CITY	BRIDGETON HIGH	11-0540-020	09-12	84.4%	7.2%	14.4%
CUMBERLAND	VINELAND CITY	CUNNINGHAM	11-5390-090	06-12	87.2%	0.0%	2.9%
ESSEX	NEWARK CITY	AMERICAN HISTORY HIGH	13-3570-087	07-12	82.9%	0.4%	3.5%
ESSEX	NEWARK CITY	BARRINGER	13-3570-020	09-12	75.5%	14.9%	29.0%
ESSEX	NEWARK CITY	CENTRAL	13-3570-030	09-12	88.7%	4.1%	19.5%
ESSEX	NEWARK CITY	MALCOLM X SHABAZZ HIGH	13-3570-050	09-12	83.9%	1.2%	28.0%
ESSEX	NEWARK CITY	NEWARK VOCATIONAL H S	13-3570-045	09-12	91.6%	0.0%	29.2%
ESSEX	NEWARK CITY	TECHNOLOGY HIGH	13-3570-056	07-12	89.5%	0.4%	6.4%
ESSEX	NEWARK CITY	UNIVERSITY HIGH	13-3570-057	07-12	79.6%	0.2%	6.8%
ESSEX	NEWARK CITY	WEEQUAHIC	13-3570-070	09-12	87.6%	0.0%	21.6%
ESSEX	NEWARK CITY	WEST SIDE HIGH	13-3570-080	09-12	76.9%	0.2%	24.4%
HUDSON	HARRISON TOWN	HARRISON HIGH	17-2060-050	09-12	81.1%	7.0%	12.4%
HUDSON	HOBOKEN CITY	HOBOKEN HIGH	17-2210-005	08-12	75.7%	1.9%	15.9%
HUDSON	JERSEY CITY	HENRY SNYDER	17-2390-050	09-12	75.5%	0.0%	30.2%
HUDSON	UNION CITY	UNION CITY HIGH SCHOOL	17-5240-055	09-12	93.5%	15.7%	12.3%
PASSAIC	PATERSON CITY	ACADEMY HIGH SCH	31-4010-025	09-12	77.9%	12.2%	24.4%
PASSAIC	PATERSON CITY	HARP HEALTH& RELATED PROF ACAD	31-4010-004	09-12	87.1%	5.7%	5.7%
PASSAIC	PATERSON CITY	ROSA PARKS ARTS HIGH SCH	31-4010-020	09-12	87.0%	3.2%	6.9%
UNION	ELIZABETH CITY	A HAMILTON PREPARATORY ACADEMY	39-1320-405	09-12	85.2%	5.4%	6.3%
UNION	ELIZABETH CITY	ADM W F HALSEY LEADERSHIP ACAD	39-1320-402	09-12	87.4%	12.5%	13.9%
UNION	ELIZABETH CITY	T A EDISON CAREER TECH ACAD	39-1320-404	09-12	88.5%	2.6%	24.9%
UNION	ELIZABETH CITY	T JEFFERSON ARTS ACADEMY	39-1320-403	09-12	83.8%	3.2%	13.0%