
New Jersey Court of Errors and Appeals

JOSEPHINE NOON, Administratrix of
George Noon, deceased,
Plaintiff-Respondent,

vs.

THE DELAWARE, LACKAWANNA
and WESTERN RAILROAD COM-
PANY,
Defendant-Appellant.

Action at Law

APPEAL FROM
SUPREME COURT.

DEFENDANT'S APPEAL

EXHIBIT BOOK

DAVID A. VEEDER,
Attorney of Respondent.

FREDERIC B. SCOTT,
Attorney of Appellant.

Paratus Law Printing Co., Inc., 102 Greenwich St., New York

New Jersey State Library

1084



4-21-27
H.B.

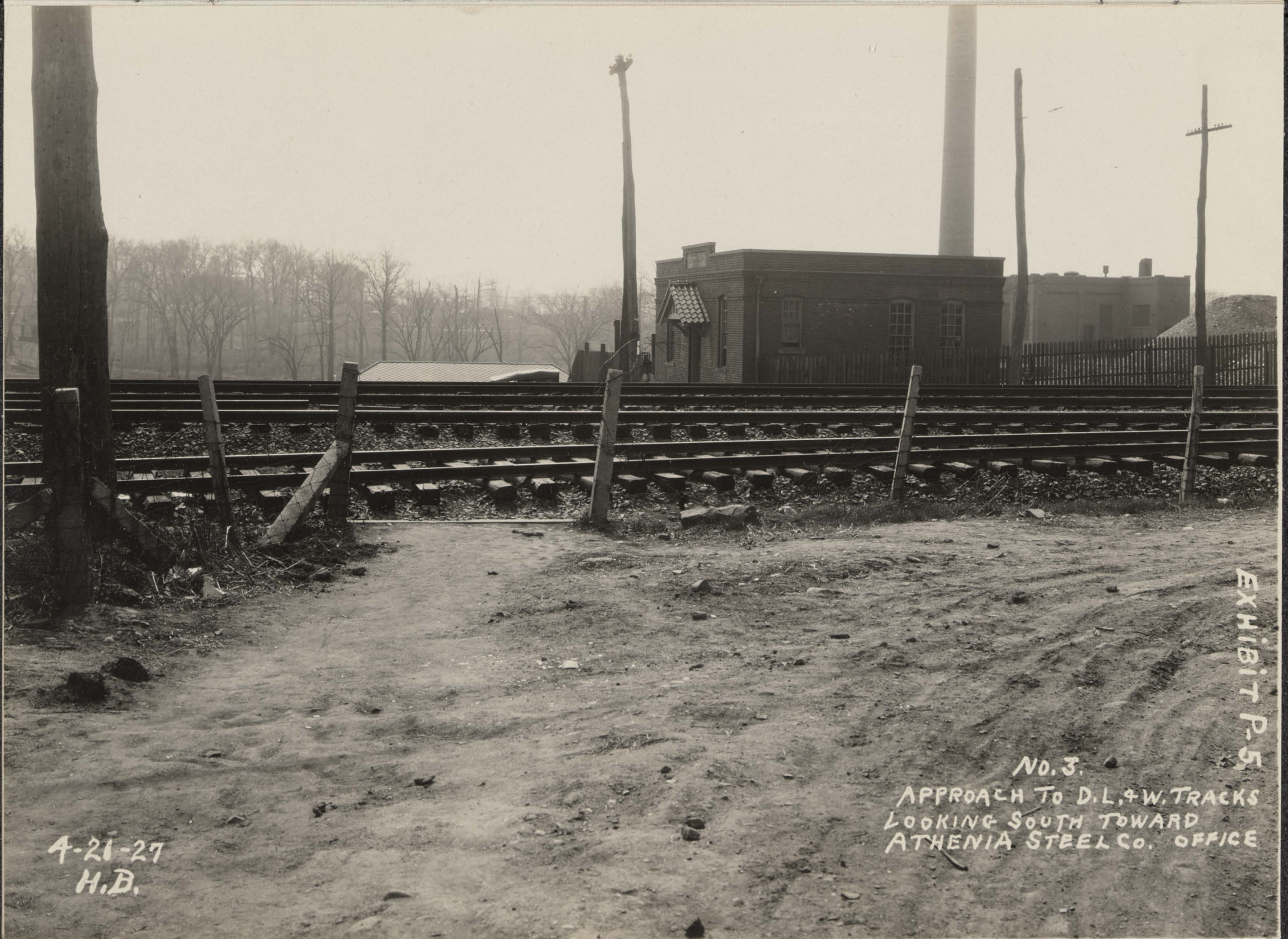
NO. 1
APPROXIMATE D.L. & W. TRACKS
AT ATHENIA STEEL CO. OFFICE
LOOKING NORTH



A-25-27
H.B.

No. 2
VIEW LOOKING NORTH
FROM D.L.W. TRACKS
AT ATHENIA STEEL CO. OFFICE

EXHIBIT P.H.



4-26-27
H.B.

NO. 3.
APPROACH TO D.L. & W. TRACKS
LOOKING SOUTH TOWARD
ATHENIA STEEL CO. OFFICE

EXHIBIT P-5



No. 7
VIEW FROM STATION PLATFORM
LOOKING EAST

4-20-27
H.B.

EXHIBIT P-6



No. 6
VIEW FROM STATION PLATFORM
LOOKING WEST

4-21-27
H.B.

EXHIBIT P-7

NO 4
VIEW LOOKING EAST
FROM A POINT 40 PAGES WEST
OF STEEL CO. SWITCH

4-21-27
H.B.

EXHIBIT P-8

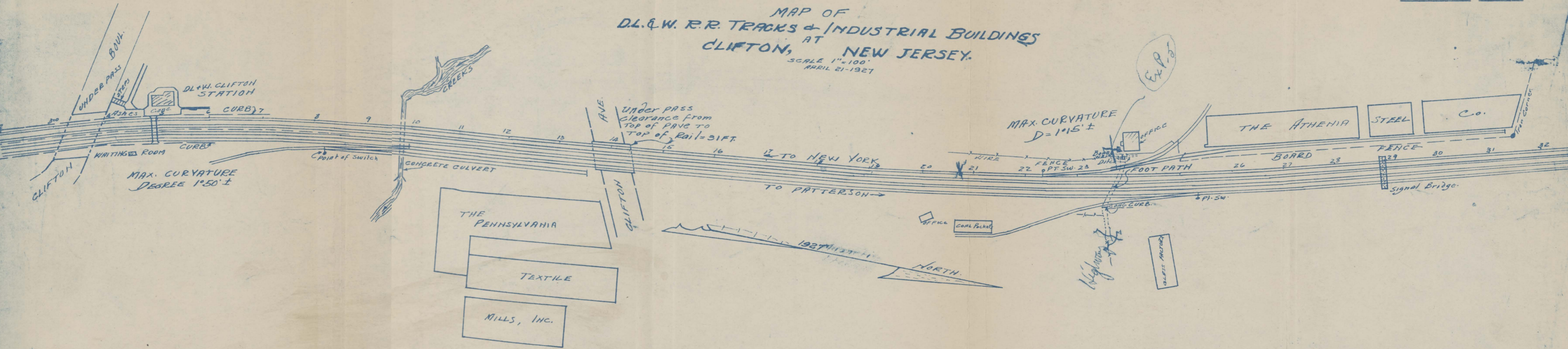


No. 5
VIEW LOOKING WEST
FROM A POINT 40 PACES
EAST OF STEEL CO. SWITCH

4-21-27
H.B.

EXHIBIT P-9

MAP OF
D.L. & W. R.R. TRACKS & INDUSTRIAL BUILDINGS
AT
CLIFTON, NEW JERSEY.
SCALE 1"=100'
APRIL 21-1927



John C. Fellows
ENGINEER & LAND SURVEYOR.
No. 1932.

Exp 2

Exp. 2