

75c
974.905
044.4
c.c.

DEPARTMENT OF HUMAN SERVICES
INTER-OFFICE COMMUNICATION

DATE June 11, 1997

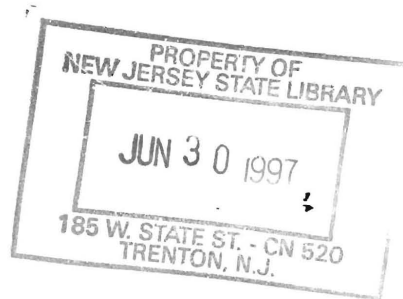
TO William Waldman
Commissioner

FROM Karen Highsmith
Director



SUBJECT CURRENT PROGRAM STATISTICS

Attached please find CURRENT PROGRAM STATISTICS, including the FDP Statistical Summary for March 1997. Also included are explanatory notes for the various data elements. Should you have any questions, please feel free to call me.



KH:kas:c

Attachments

c Guhl
Grant
Miller
Tencza

State of New Jersey
Department of Human Services
Division of Family Development



**CURRENT
PROGRAM
STATISTICS**

March 1997
Karen Highsmith, Director

State of New Jersey
 Department of Human Services
 Division of Family Development

CURRENT PROGRAM STATISTICS
 March 1997

TABLE OF CONTENTS

| | Page |
|--|--------------|
| Highlights of Current Program Statistics | 1-3 |
| Statistics by County, March 1997 | |
| Table 1 AFDC | 4 |
| Graph 1 Current AFDC Families..... | 4 |
| Table 2 Food Stamp Program..... | 5 |
| Graph 2 Current Food Stamp Households/Persons | 5 |
| Table 3 AFDC/SSI Emergency Assistance Program | 6 |
| Graph 3 Current AFDC Families Receiving Emergency Assistance | 6 |
| Table 4 Family Development Program..... | 7 |
| State Summary, 1995 - 1997 | |
| Table 5 AFDC, March 1995 - March 1997 | 8 |
| Graph 4 Families Receiving AFDC, 3/95 - 3/97 | 8 |
| Table 6 Food Stamp Program, March 1995 - March 1997..... | 9 |
| Graph 5 Food Stamp Households, 3/95 - 3/97 | 9 |
| Graph 6 Food Stamp Recipients, 3/95 - 3/97..... | 10 |
| Table 7 AFDC Emergency Assistance Program, March 1995 - March 1997 | 11 |
| Graph 7 AFDC Families Receiving Emergency Assistance, 3/95 - 3/97 | 11 |
| Table 8 JOBS/FDP Participation Rates, by County and Statewide, March 1995 - March 1997 | 12 |
| Graph 8 JOBS/FDP Participation Rates, 3/95 - 3/97 | 12-13 |
| Table 9 General Assistance, and GA Emergency Assistance, December 1994 - December 1996 | 14 |
| Graph 9 General Assistance Recipients, 12/94-12/96 | 14 |
| Table 10 Child Support and Paternity, Federal Fiscal Years 1996-1997 | 15 |
| Explanatory Notes..... | 16-17 |
| Supplement | |
| Table 11 General Assistance Recipients and EA Payments by County and Municipality, December 1996 | 18 |
| Table 12 Child Support and Paternity Cases Remaining Open , Quarter Ending March 1997 | 19 |

Highlights of Current Program Statistics

AFDC (Tables 1 and 5, Graphs 1 and 4)

About 103,100 eligible families in New Jersey were receiving AFDC as of the end of March 1997:

- **93,100** single head of household families (Regular AFDC, C segment).
- Among two-parent families, about **2400** Unemployed Parent families (F Segment) and **2700** State AFDC families (N Segment).
- **4800** Medicaid Only families.
- The largest numbers of families by county: Essex with **26,400**, Hudson with **16,300**, and Camden County with **12,000**. (53.1 percent of all AFDC families)
- Other counties ranged from **144** families in Hunterdon to **6,721** in Passaic County, with six counties below **1000** families.

There were about 200 fewer eligible AFDC families in March 1997 than in February 1997 and a decline of 18,000 over the past two years.

- There were about **250** fewer eligible C segment families in March 1997 than in February 1997 and close to **16,000** less than two years ago.
- F segment families declined from **3900** in March 1995 to about **2400** in March 1997, but the latter was about **100** more than February 1997 (a change similar to February/March 1996).
- State AFDC (N segment) was about **3300** in March 1995, slowly declined to about **2700** by December 1996, and has remained at that level through March 1997.
- Medicaid Only families averaged nearly **5200** for 1995, less than **5100** for 1996, and **4900** for the first three months of 1997. There were about **200 less** Medicaid Only families in March 1997 than a year earlier.

FOOD STAMP PROGRAM (Tables 2 and 6, Graphs 2, 5, and 6)

At the end of March 1997, 202,100 households were participating in the Food Stamp Program:

- Less than **95,000** AFDC households with **303,000** persons.
- About **107,000** Other Low Income households with **163,000** persons.
- With a total of nearly **466,000** persons, including less than **224,000** adults and about **242,000** children
- **48.8 percent** of the households were in Essex (**51,000**), Hudson (**28,100**) and Camden (**19,500**) Counties.
- The number of adults exceeded the number of children in Food Stamp households in **seven** counties (Bergen, Hunterdon, Monmouth, Morris, Somerset, Sussex, and Warren).

After a peak of almost 225,000 Food Stamp households in New Jersey in March 1995, the level remained in the 220,000 to 223,000 range through June 1996. Thereafter Food Stamp households declined substantially (from almost 223,000 in May 1996 to about 202,000 in March 1997).

- The number of AFDC(FS) households has been less than Other Low Income households since November 1995, with a difference of more than **12,500** in March 1997. The number of Other Low Income households receiving Food Stamps averaged about **109,000** in 1995, peaked at close to **115,000** in May 1996, then fell to less than **108,000** by March 1997. There were more than **114,000** AFDC(FS) households in March 1995 and less than **95,000** in March 1997.
- After a peak of more than **529,000** in March 1995, the number of Total Recipients has been moving downward. Near **515,000** from July 1995 through May 1996, the level dropped substantially and was less than **466,000** by March 1997. This is a total two-year decline of close to **64,000** or **12 percent**, of which **9 percent** occurred in the last 12 months.
- The number of Recipient Adults averaged **246,000** for 1994 through the first five months of 1996. From May 1996 through March 1997 the number declined by more than **23,000** from about **247,000** to **224,000**.
- After a peak of more than **279,000** in March 1995, the number of Recipient Children has been moving downward. By March 1997 the level was down more than **13 percent** to **242,000**.

EMERGENCY ASSISTANCE (Tables 3, 7 and 9, Graphs 3, 7 and 9)

In March 1997 Emergency Assistance (EA) payments were made for 3926 eligible AFDC families and 291 SSI recipients in New Jersey. For AFDC families this included payments for:

- **1494** families with Temporary Rental Assistance (TRA)
- **278** motel placements and **327** emergency shelter placements
- **1827** families accounted for all other AFDC-EA payments, including back rent, back utilities, security deposits, furnishings, clothing and food allowance, or transitional housing.
- EA payments were made for **1011** AFDC families in Essex County and **514** in Middlesex. All other counties accounted for between **1** and **435** AFDC-EA payments, with nine counties **below 100**, and another four counties **at or slightly above 100**.

In the past two years, the average number of EA payments for AFDC families was 5800 in 1995, and 4800 in 1996. For the first quarter of 1997 the average was below 4000.

- The number of TRA payments provided for AFDC families each month has declined steadily from more than **2500** in March 1995 to less than **1500** in the first quarter of 1997.
- Emergency Shelter payments have been provided for **around 300 to 400** families each month in the last two years. Payments for Motel Housing declined from close to **500** in early 1995 to about **300** in 1996-1997.
- Other EA payments were made for an average of nearly **2800** families in 1995 compared to about **1800** in the first quarter of 1997.

For 1994 there were an average of 7800 GA EA recipients, 7400 for 1995, and 6900 for 1996. Of those, GA TRA payments were made to an average of 4700 recipients in 1994, 4400 in 1995, and about 4100 in 1996.

JOBS/FDP PARTICIPATION RATES (Table 8, Graph 8)

In March 1997 the Statewide JOBS/FDP participation rate was **34.7 percent**, more than five percentage points higher than February. This is an even greater upswing than occurred between February and March 1996, and is close to **11 percentage points** higher than two years ago. Every county experienced a participation rate above **20 percent** in March.

- Most counties have shown upward movement in participation rates in the past two years, including Bergen, Burlington, Camden, Cape May, Essex, Gloucester, Hudson, Hunterdon, Middlesex, Monmouth, and Passaic. Atlantic, Cumberland and Warren have maintained high participation rates. Salem, Somerset and Sussex have generally been high but with large month-to-month fluctuations. Morris increased markedly in 1995 and has been at or near 100 percent since June 1996. Mercer, Ocean and Union have had little or no overall increase in the past two years.
- County rates were distributed as follows:

| | |
|-------------------------|---|
| 20 to 29 percent | -- Camden, Cape May, Essex, Gloucester, Ocean, Union |
| 30 to 39 percent | -- Bergen, Hudson, Mercer, Monmouth, Passaic |
| 40 to 49 percent | -- Burlington, Hunterdon, Warren |
| Over 50 percent | -- Atlantic, Cumberland, Middlesex, Morris, Salem, Somerset, Sussex |
- From February to March 1997, participation rates increased in all 21 counties.

GENERAL ASSISTANCE (Table 9, Graph 9)

December 1996 (the latest available information) was the second month in the last two years with less than 30,000 GA recipients. GA recipients averaged **36,200** for 1994, **33,600** in 1995 and about **32,000** for 1996.

- The number of employable GA recipients has closely mirrored the changes in total GA recipients. The December level was the fourth consecutive month at **20,000 or less**. Employable GA recipients averaged about **24,400** for 1994, about **22,400** in 1995 and **21,300** for 1996.
- Over the two year period Unemployable GA recipients remained within a relatively narrow range. The level remained around **11,000 to 12,000** from November 1994 through October 1995. It declined to about **10,000** from November 1995 through January 1996, and remained between **10,000 and 11,000** through the end of 1996.

CHILD SUPPORT AND PATERNITY (Table 10)

The total distribution of collections of the Child Support and Paternity Program increased by **14 percent** from more than \$247 million in the first six months of FFY 1996 (October 1995 - March 1996) to nearly \$282 million in the first six months of FFY 1997 (October 1996 - March 1997).

New Jersey Department of Human Services
 Division of Family Development

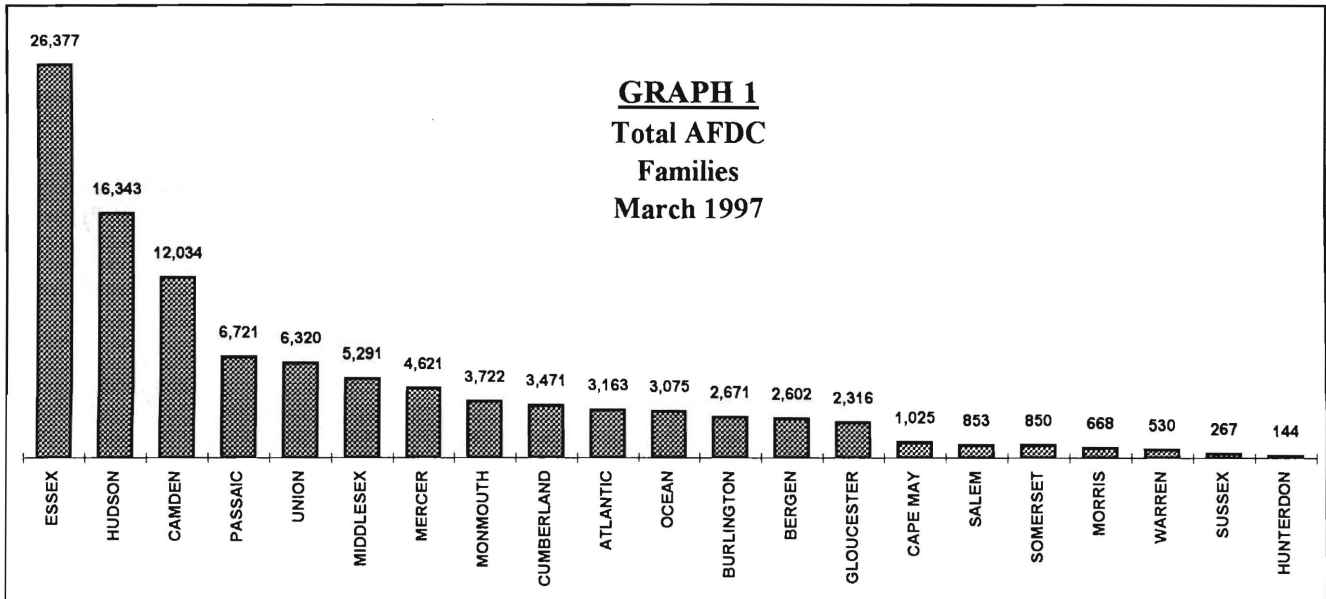
Table 1

AFDC Program

**NUMBER OF APPLICATIONS AND TERMINATIONS DURING REPORT MONTH, AND
 NUMBER OF ELIGIBLE FAMILIES RECEIVING AFDC AT END OF REPORT MONTH
 March 1997**

| County | Applications Approved | Terminations | Regular AFDC (C Segment) | Unemployed Parents(F) | State AFDC(N) | Medicaid Only | Total AFDC |
|-----------------|-----------------------|--------------|--------------------------|-----------------------|---------------|---------------|----------------|
| ATLANTIC | 229 | 347 | 2,915 | 68 | 49 | 131 | 3,163 |
| BERGEN | 141 | 170 | 2,335 | 97 | 101 | 69 | 2,602 |
| BURLINGTON | 254 | 234 | 2,316 | 69 | 85 | 201 | 2,671 |
| CAMDEN | 770 | 805 | 10,574 | 408 | 335 | 717 | 12,034 |
| CAPE MAY | 109 | 92 | 833 | 61 | 58 | 73 | 1,025 |
| CUMBERLAND | 277 | 252 | 2,956 | 135 | 190 | 190 | 3,471 |
| ESSEX | 1,041 | 1,129 | 25,168 | 339 | 205 | 665 | 26,377 |
| GLOUCESTER | 301 | 255 | 1,960 | 92 | 63 | 201 | 2,316 |
| HUDSON | 551 | 649 | 14,670 | 239 | 559 | 875 | 16,343 |
| HUNTERDON | 25 | 18 | 105 | 9 | 4 | 26 | 144 |
| MERCER | 453 | 429 | 4,110 | 80 | 102 | 329 | 4,621 |
| MIDDLESEX | 404 | 478 | 4,423 | 196 | 239 | 433 | 5,291 |
| MONMOUTH | 256 | 228 | 3,461 | 78 | 125 | 58 | 3,722 |
| MORRIS | 51 | 51 | 612 | 14 | 12 | 30 | 668 |
| OCEAN | 234 | 198 | 2,569 | 150 | 126 | 230 | 3,075 |
| PASSAIC | 395 | 357 | 6,242 | 201 | 207 | 71 | 6,721 |
| SALEM | 76 | 74 | 761 | 11 | 32 | 49 | 853 |
| SOMERSET | 95 | 121 | 712 | 34 | 32 | 72 | 850 |
| SUSSEX | 42 | 36 | 211 | 6 | 1 | 49 | 267 |
| UNION | 441 | 442 | 5,722 | 102 | 162 | 334 | 6,320 |
| WARREN | 39 | 51 | 449 | 23 | 26 | 32 | 530 |
| NJ TOTAL | 6,184 | 6,416 | 93,104 | 2,412 | 2,713 | 4,835 | 103,064 |

Data is derived from NJ Division of Family Development's FAMIS report #FF-012



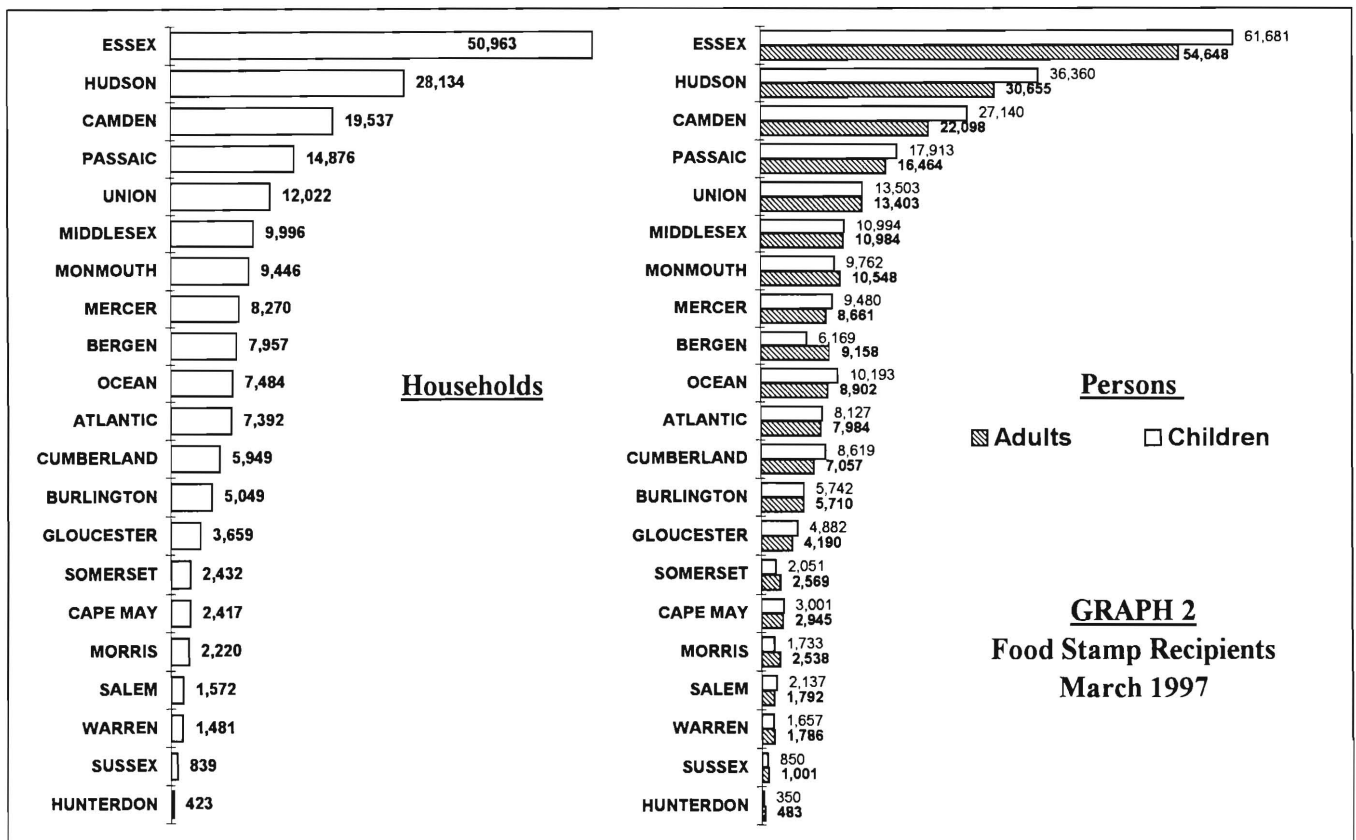
New Jersey Department of Human Services
Division of Family Development

Table 2
FOOD STAMP Program
NUMBER OF ATP'S ISSUED TO HOUSEHOLDS, PERSONS, ADULTS
AND CHILDREN AT THE END OF THE REPORT MONTH
March 1997

| County | HOUSEHOLDS | | | PERSONS | | | | |
|-----------------|---------------|------------------|----------------|----------------|----------------|------------------|----------------|----------------|
| | AFDC | Other low income | TOTAL | TOTAL | AFDC | Other low income | Adults | Children |
| ATLANTIC | 2,952 | 4,440 | 7,392 | 16,111 | 9,622 | 6,489 | 7,984 | 8,127 |
| BERGEN | 2,298 | 5,659 | 7,957 | 15,327 | 6,887 | 8,440 | 9,158 | 6,169 |
| BURLINGTON | 2,223 | 2,826 | 5,049 | 11,452 | 6,933 | 4,519 | 5,710 | 5,742 |
| CAMDEN | 11,080 | 8,457 | 19,537 | 49,238 | 36,938 | 12,300 | 22,098 | 27,140 |
| CAPE MAY | 1,089 | 1,328 | 2,417 | 5,946 | 3,683 | 2,263 | 2,945 | 3,001 |
| CUMBERLAND | 3,306 | 2,643 | 5,949 | 15,676 | 11,367 | 4,309 | 7,057 | 8,619 |
| ESSEX | 25,394 | 25,569 | 50,963 | 116,329 | 79,805 | 36,524 | 54,648 | 61,681 |
| GLOUCESTER | 2,003 | 1,656 | 3,659 | 9,072 | 6,411 | 2,661 | 4,190 | 4,882 |
| HUDSON | 15,119 | 13,015 | 28,134 | 67,015 | 46,703 | 20,312 | 30,655 | 36,360 |
| HUNTERDON | 107 | 316 | 423 | 833 | 341 | 492 | 483 | 350 |
| MERCER | 3,915 | 4,355 | 8,270 | 18,141 | 12,344 | 5,797 | 8,661 | 9,480 |
| MIDDLESEX | 4,550 | 5,446 | 9,996 | 21,978 | 13,890 | 8,088 | 10,984 | 10,994 |
| MONMOUTH | 3,504 | 5,942 | 9,446 | 20,310 | 11,332 | 8,978 | 10,548 | 9,762 |
| MORRIS | 552 | 1,668 | 2,220 | 4,271 | 1,708 | 2,563 | 2,538 | 1,733 |
| OCEAN | 3,058 | 4,426 | 7,484 | 19,095 | 10,376 | 8,719 | 8,902 | 10,193 |
| PASSAIC | 6,022 | 8,854 | 14,876 | 34,377 | 20,221 | 14,156 | 16,464 | 17,913 |
| SALEM | 798 | 774 | 1,572 | 3,929 | 2,637 | 1,292 | 1,792 | 2,137 |
| SOMERSET | 764 | 1,668 | 2,432 | 4,620 | 2,271 | 2,349 | 2,569 | 2,051 |
| SUSSEX | 246 | 593 | 839 | 1,851 | 745 | 1,106 | 1,001 | 850 |
| UNION | 5,290 | 6,732 | 12,022 | 26,906 | 17,172 | 9,734 | 13,403 | 13,503 |
| WARREN | 517 | 964 | 1,481 | 3,443 | 1,666 | 1,777 | 1,786 | 1,657 |
| NJ TOTAL | 94,787 | 107,331 | 202,118 | 465,920 | 303,052 | 162,868 | 223,576 | 242,344 |

ATP - Authorization to Participate

Data is derived from NJ Division of Family Development's FAMIS report # FB-160.



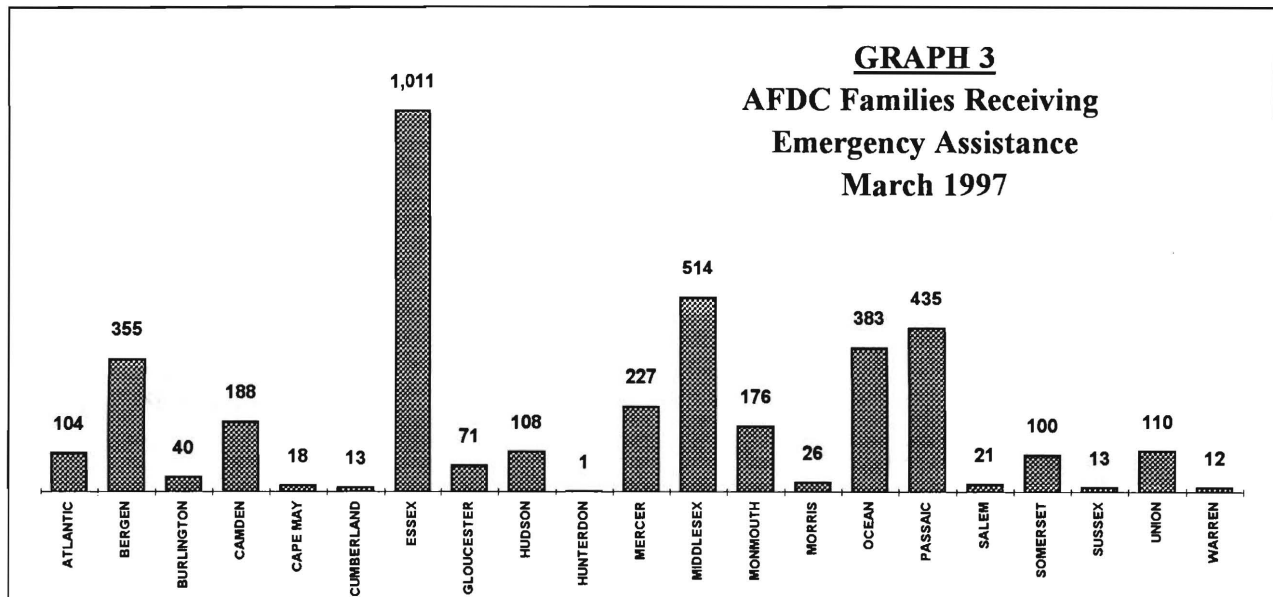
New Jersey Department of Human Services
 Division of Family Development

Table 3
AFDC/SSI EMERGENCY ASSISTANCE
NUMBER OF ELIGIBLE FAMILIES RECEIVING EMERGENCY ASSISTANCE PAYMENTS
(UNDUPLICATED CASES)

March 1997

| County | TOTAL AFDC-EA | AFDC Families Receiving Emergency Assistance | | | Other AFDC-EA | SSI Recipients Receiving EA |
|-----------------|------------------|--|------------------|----------------------|------------------|-----------------------------------|
| | | Temporary Rental Assist. | Motel Housing | Emergency Shelter | | |
| ATLANTIC | 104 | 34 | 10 | 20 | 40 | 17 |
| BERGEN | 355 | 196 | 37 | 28 | 94 | 7 |
| BURLINGTON | 40 | 2 | 1 | 24 | 13 | 1 |
| CAMDEN | 188 | 77 | 1 | 17 | 93 | 12 |
| CAPE MAY | 18 | 7 | 2 | 0 | 9 | 5 |
| CUMBERLAND | 13 | 1 | 1 | 7 | 4 | 1 |
| ESSEX | 1,011 | 475 | 24 | 98 | 414 | 43 |
| GLOUCESTER | 71 | 39 | 2 | 18 | 12 | 5 |
| HUDSON | 108 | 19 | 6 | 17 | 66 | 6 |
| HUNTERDON | 1 | 0 | 0 | 1 | 0 | 0 |
| MERCER | 227 | 97 | 20 | 2 | 108 | 11 |
| MIDDLESEX | 514 | 262 | 21 | 12 | 219 | 32 |
| MONMOUTH | 176 | 114 | 12 | 1 | 49 | 9 |
| MORRIS | 26 | 0 | 1 | 6 | 19 | 7 |
| OCEAN | 383 | 133 | 107 | 3 | 140 | 75 |
| PASSAIC | 435 | 5 | 9 | 24 | 397 | 45 |
| SALEM | 21 | 8 | 2 | 0 | 11 | 0 |
| SOMERSET | 100 | 11 | 6 | 24 | 59 | 3 |
| SUSSEX | 13 | 1 | 5 | 4 | 3 | 1 |
| UNION | 110 | 13 | 5 | 21 | 71 | 11 |
| WARREN | 12 | 0 | 6 | 0 | 6 | 0 |
| NJ TOTAL | 3,926 | 1,494 | 278 | 327 | 1,827 | 291 |

Derived from NJ Division of Family Development FAMIS Reports #FM457 and #FM430-03A



New Jersey Department of Human Services
Division of Family Development

TABLE 4
FAMILY DEVELOPMENT PROGRAM
STATISTICAL SUMMARY

| COUNTY | SNAPSHOT OF ACTIVITY AS OF MARCH 1997 | | | | ACTIVITY FOR MONTH OF MARCH 1997 | | | | | |
|------------|---|--------------------------------------|----------------|---------------|---|---------------|---------------------------------|--|--|--|
| | TOTAL NONEXMT JOBS/FDP RECI- PIENTS | EMPLOYMENT DIRECTED ACTIVITIES(1) | | | PARTIC IN EDAs & RECEIVE SUPPORT SERVICES | | PARTIC W/ 1st C M INTV | # EMPL THIS MONTH & STILL REC AFDC | # CLSD ON FAMIS RE: EARNINGS (2) | POST AFDC & REC CHILD CARE |
| | | TRAIN- ING | EDUCA- TION | JOB SEARCH | TREs | CHILD CARE | | | | |
| ATLANTIC | 1,045 | 314 | 137 | 118 | 329 | 157 | 198 | 48 | 58 | 176 |
| BERGEN | 1,638 | 263 | 112 | 97 | 197 | 143 | 31 | 17 | 46 | 94 |
| BURLINGTON | 1,188 | 305 | 85 | 160 | 385 | 172 | 137 | 57 | 69 | 181 |
| CAMDEN | 8,150 | 683 | 492 | 165 | 883 | 575 | 525 | 76 | 132 | 289 |
| CAPE MAY | 577 | 97 | 19 | 55 | 56 | 22 | 84 | 11 | 33 | 14 |
| CUMBERLAND | 1,444 | 272 | 117 | 166 | 458 | 218 | 161 | 56 | 62 | 134 |
| ESSEX | 16,311 | 1,699 | 1,043 | 452 | 2,380 | 1,660 | 608 | 107 | 227 | 286 |
| GLOUCESTER | 962 | 159 | 35 | 140 | 388 | 108 | 108 | 21 | 34 | 87 |
| HUDSON | 10,211 | 1,432 | 994 | 304 | 2,151 | 1,193 | 247 | 87 | 209 | 353 |
| HUNTERDON | 78 | 10 | 9 | 14 | 10 | 7 | 2 | 1 | 4 | 14 |
| MERCER | 2,981 | 382 | 235 | 28 | 260 | 274 | 61 | 47 | 67 | 153 |
| MIDDLESEX | 2,665 | 374 | 191 | 238 | 486 | 249 | 232 | 119 | 108 | 236 |
| MONMOUTH | 2,347 | 320 | 183 | 204 | 472 | 319 | 144 | 51 | 65 | 196 |
| MORRIS | 309 | 207 | 32 | 62 | 69 | 78 | 48 | 13 | 12 | 63 |
| OCEAN | 1,681 | 171 | 73 | 130 | 135 | 116 | 125 | 29 | 77 | 189 |
| PASSAIC | 3,547 | 782 | 307 | 270 | 971 | 396 | 239 | 49 | 78 | 157 |
| SALEM | 353 | 77 | 85 | 23 | 121 | 79 | 16 | 7 | 18 | 53 |
| SOMERSET | 459 | 59 | 55 | 19 | 74 | 67 | 9 | 7 | 20 | 39 |
| SUSSEX | 133 | 22 | 19 | 45 | 35 | 26 | 13 | 3 | 11 | 40 |
| UNION | 3,717 | 353 | 180 | 234 | 448 | 208 | 136 | 22 | 90 | 141 |
| WARREN | 353 | 53 | 36 | 28 | 19 | 18 | 1 | 9 | 15 | 15 |
| STATE | 60,149 | 8,034 | 4,439 | 2,952 | 10,327 | 6,085 | 3,125 | 837 | 1,435 | 2,910 |

(1) - The number of participants receiving support services may occasionally exceed the number actively participating in EDAs. This can result from extended assessment or evaluation activities, or the issuance of bridge payments.

(2) - FAMIS file date: 3/21/97

New Jersey Department of Human Services
 Division of Family Development

Table 5

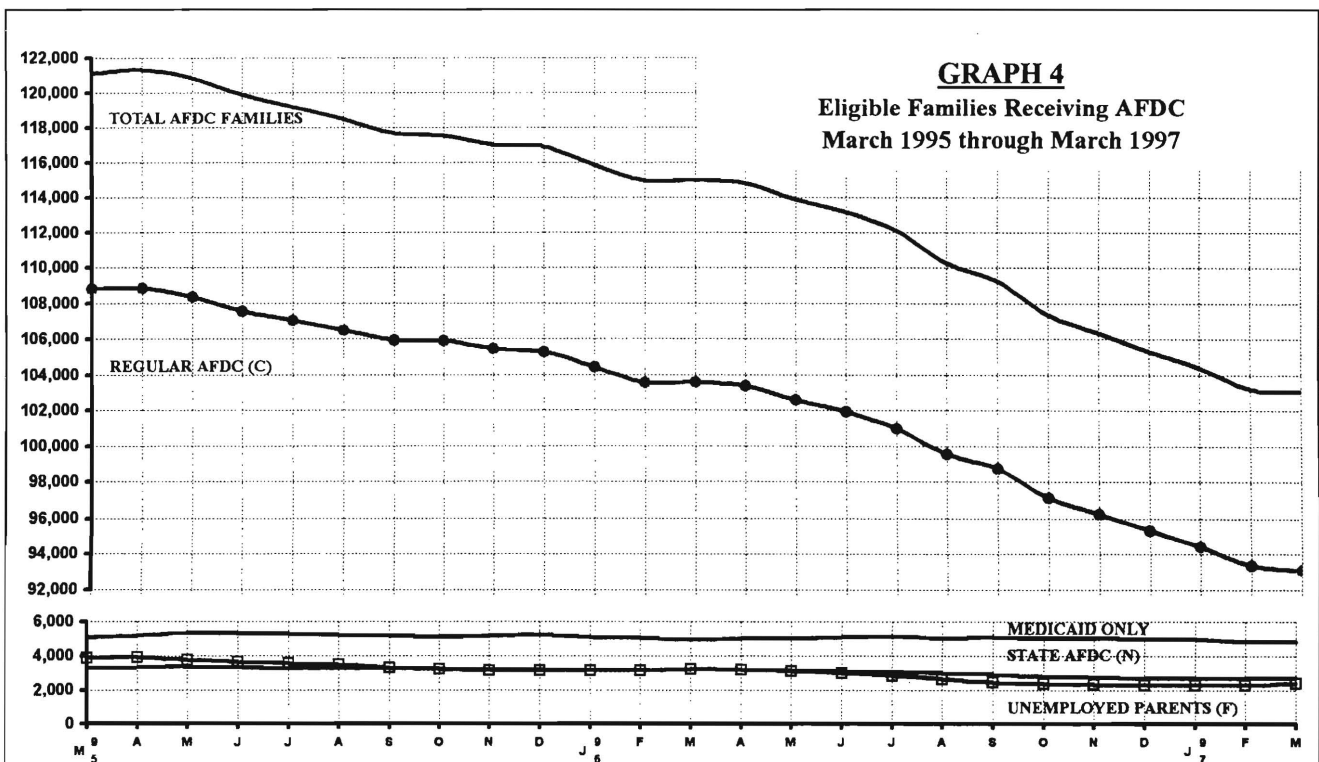
AFDC Program

**NUMBER OF APPLICATIONS AND TERMINATIONS DURING REPORT MONTH, AND
 NUMBER OF ELIGIBLE FAMILIES RECEIVING AFDC AT END OF REPORT MONTH**

March 1995 through March 1997

| | Applications Approved | Terminations | Regular AFDC (C Segment) | Unemployed Parents(F) | State AFDC(N) | Medicaid Only | Total AFDC |
|-------------------|--------------------------|--------------|-----------------------------|--------------------------|------------------|------------------|---------------|
| 1995 MAR | 5,810 | 6,221 | 108,800 | 3,903 | 3,305 | 5,088 | 121,096 |
| APR | 7,096 | 7,086 | 108,822 | 3,907 | 3,365 | 5,209 | 121,303 |
| MAY | 5,288 | 5,784 | 108,343 | 3,773 | 3,369 | 5,328 | 120,813 |
| JUN | 5,558 | 6,458 | 107,541 | 3,639 | 3,336 | 5,358 | 119,874 |
| JUL | 5,977 | 6,781 | 107,028 | 3,574 | 3,286 | 5,293 | 119,181 |
| AUG | 5,547 | 6,294 | 106,475 | 3,489 | 3,260 | 5,239 | 118,463 |
| SEP | 5,922 | 6,647 | 105,943 | 3,303 | 3,260 | 5,175 | 117,681 |
| OCT | 7,062 | 7,359 | 105,917 | 3,224 | 3,257 | 5,110 | 117,508 |
| NOV | 6,083 | 6,660 | 105,445 | 3,164 | 3,199 | 5,189 | 116,997 |
| DEC | 5,582 | 5,775 | 105,287 | 3,165 | 3,189 | 5,258 | 116,899 |
| AVERAGE (12 mos.) | 5,956 | 6,460 | 107,376 | 3,575 | 3,288 | 5,192 | 119,430 |
| 1996 JAN | 5,332 | 6,236 | 104,430 | 3,139 | 3,173 | 5,113 | 115,855 |
| FEB | 5,217 | 6,283 | 103,561 | 3,161 | 3,170 | 5,060 | 114,952 |
| MAR | 6,317 | 6,302 | 103,598 | 3,230 | 3,217 | 4,956 | 115,001 |
| APR | 6,896 | 7,241 | 103,352 | 3,192 | 3,211 | 5,040 | 114,795 |
| MAY | 5,335 | 6,152 | 102,600 | 3,112 | 3,163 | 5,038 | 113,913 |
| JUN | 5,319 | 6,121 | 101,947 | 2,999 | 3,117 | 5,116 | 113,179 |
| JUL | 5,874 | 7,027 | 100,968 | 2,843 | 3,073 | 5,200 | 112,084 |
| AUG | 5,014 | 6,789 | 99,567 | 2,638 | 2,993 | 5,053 | 110,251 |
| SEP | 6,311 | 7,440 | 98,744 | 2,462 | 2,933 | 5,097 | 109,236 |
| OCT | 5,213 | 7,015 | 97,152 | 2,368 | 2,822 | 5,026 | 107,368 |
| NOV | 5,374 | 6,549 | 96,238 | 2,329 | 2,752 | 5,034 | 106,353 |
| DEC | 5,018 | 6,137 | 95,322 | 2,308 | 2,708 | 4,992 | 105,330 |
| AVERAGE | 5,602 | 6,608 | 100,623 | 2,815 | 3,028 | 5,060 | 111,526 |
| 1997 JAN | 5,933 | 6,803 | 94,429 | 2,290 | 2,692 | 4,994 | 104,405 |
| FEB | 4,410 | 5,728 | 93,359 | 2,310 | 2,700 | 4,862 | 103,231 |
| MAR | 6,184 | 6,416 | 93,104 | 2,412 | 2,713 | 4,835 | 103,064 |
| AVERAGE | 5,509 | 6,316 | 93,631 | 2,337 | 2,702 | 4,897 | 103,567 |

Data is derived from NJ Division of Family Development's FAMIS report #FF-012



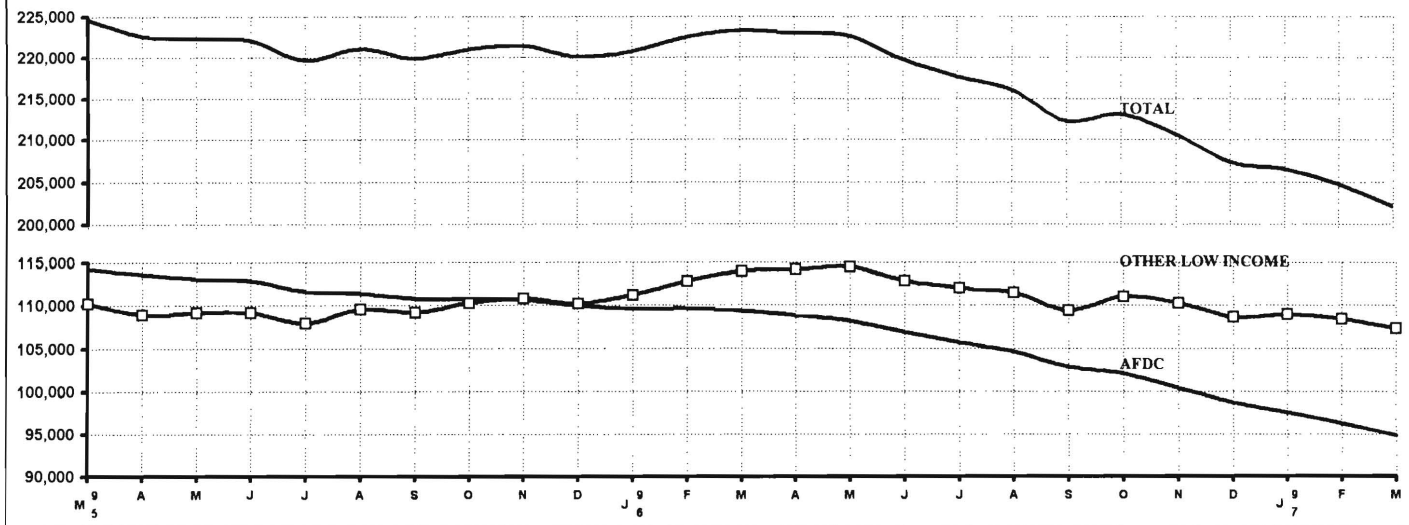
New Jersey Department of Human Services
 Division of Family Development

TABLE 6
FOOD STAMP Program State Summary
NUMBER OF ATP'S ISSUED TO HOUSEHOLDS, PERSONS
ADULTS AND CHILDREN AT THE END OF THE REPORT MONTH
 March 1995 through March 1997

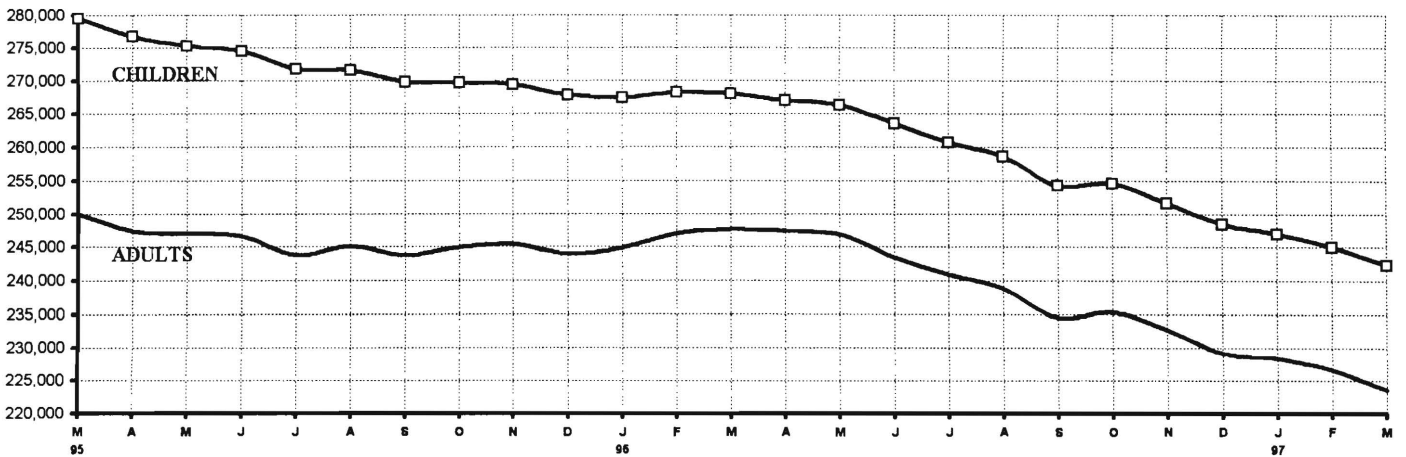
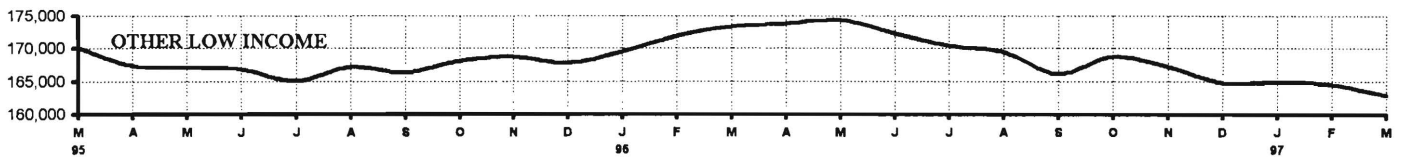
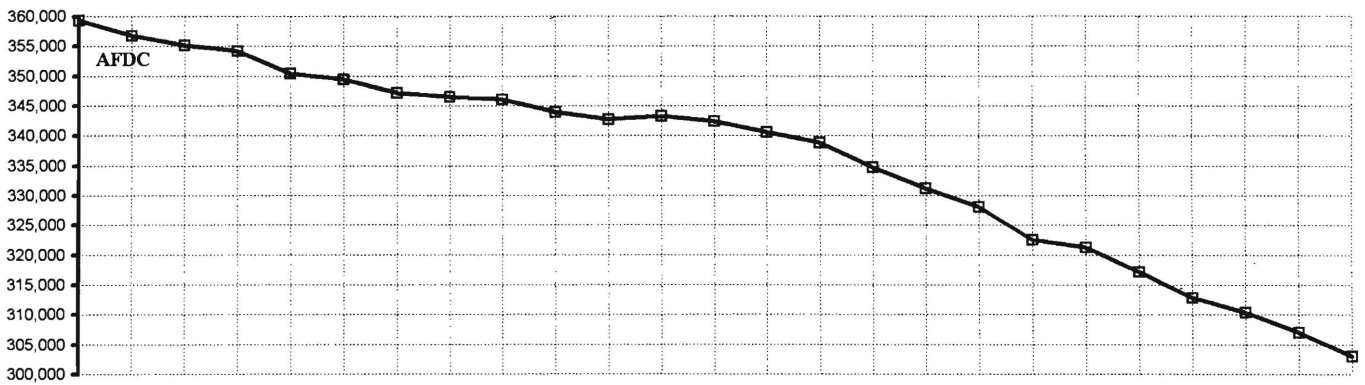
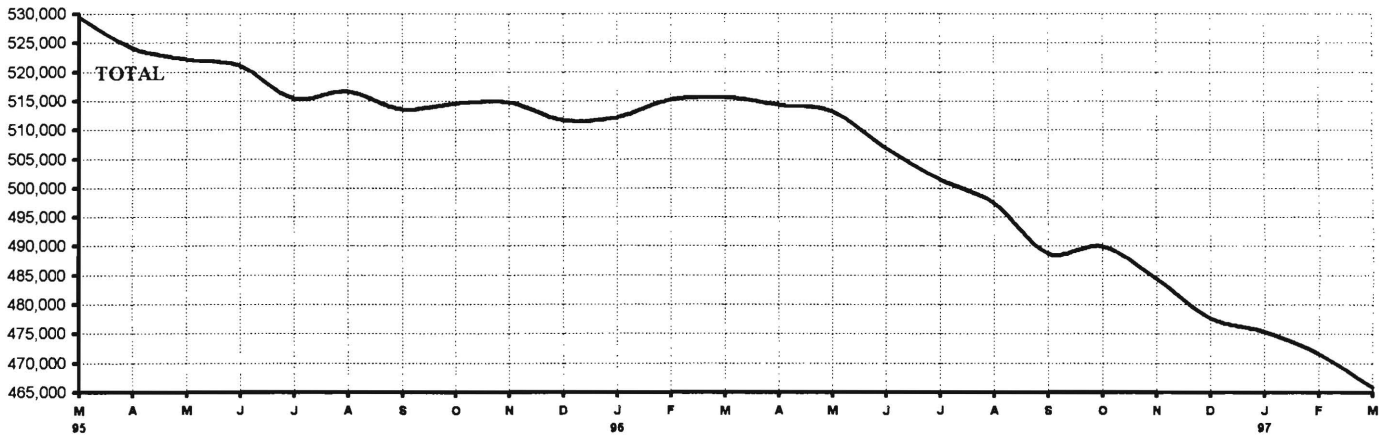
| | HOUSEHOLDS | | | TOTAL | PERSONS | | | |
|-------------------|------------|------------------|---------|---------|---------|------------------|---------|----------|
| | AFDC | Other low income | TOTAL | | AFDC | Other low income | Adults | Children |
| 1995 MAR | 114,339 | 110,279 | 224,618 | 529,456 | 359,404 | 170,052 | 249,994 | 279,462 |
| APR | 113,588 | 108,991 | 222,579 | 524,102 | 356,717 | 167,385 | 247,367 | 276,735 |
| MAY | 113,125 | 109,171 | 222,296 | 522,173 | 355,099 | 167,074 | 246,949 | 275,224 |
| JUN | 112,827 | 109,198 | 222,025 | 521,084 | 354,211 | 166,873 | 246,557 | 274,527 |
| JUL | 111,635 | 107,978 | 219,613 | 515,478 | 350,378 | 165,100 | 243,727 | 271,751 |
| AUG | 111,415 | 109,603 | 221,018 | 516,618 | 349,372 | 167,246 | 245,110 | 271,508 |
| SEP | 110,760 | 109,154 | 219,914 | 513,517 | 347,126 | 166,391 | 243,723 | 269,794 |
| OCT | 110,697 | 110,268 | 220,965 | 514,598 | 346,519 | 168,079 | 244,911 | 269,687 |
| NOV | 110,630 | 110,763 | 221,393 | 514,823 | 346,034 | 168,789 | 245,455 | 269,368 |
| DEC | 109,992 | 110,155 | 220,147 | 511,727 | 343,955 | 167,772 | 243,965 | 267,762 |
| AVERAGE (12 mos.) | 112,211 | 109,290 | 221,500 | 519,170 | 351,916 | 167,254 | 245,892 | 273,279 |
| 1996 JAN | 109,554 | 111,166 | 220,720 | 512,165 | 342,778 | 169,387 | 244,801 | 267,364 |
| FEB | 109,649 | 112,813 | 222,462 | 515,181 | 343,314 | 171,867 | 246,961 | 268,220 |
| MAR | 109,364 | 113,895 | 223,259 | 515,676 | 342,361 | 173,315 | 247,695 | 267,981 |
| APR | 108,787 | 114,163 | 222,950 | 514,375 | 340,597 | 173,778 | 247,380 | 266,995 |
| MAY | 108,205 | 114,458 | 222,663 | 513,213 | 338,891 | 174,322 | 246,918 | 266,295 |
| JUN | 106,875 | 112,888 | 219,763 | 506,926 | 334,762 | 172,164 | 243,422 | 263,504 |
| JUL | 105,653 | 112,023 | 217,676 | 501,575 | 331,157 | 170,418 | 240,840 | 260,735 |
| AUG | 104,568 | 111,473 | 216,041 | 497,436 | 328,055 | 169,381 | 238,804 | 258,632 |
| SEP | 102,827 | 109,441 | 212,268 | 488,765 | 322,572 | 166,193 | 234,442 | 254,323 |
| OCT | 102,088 | 111,008 | 213,096 | 489,991 | 321,226 | 168,765 | 235,401 | 254,590 |
| NOV | 100,411 | 110,254 | 210,665 | 484,378 | 317,163 | 167,215 | 232,756 | 251,622 |
| DEC | 98,729 | 108,617 | 207,346 | 477,693 | 312,869 | 164,824 | 229,191 | 248,502 |
| AVERAGE | 105,559 | 111,850 | 217,409 | 501,448 | 331,312 | 170,136 | 240,718 | 260,730 |
| 1997 JAN | 97,555 | 108,961 | 206,516 | 475,374 | 310,342 | 165,032 | 228,388 | 246,986 |
| FEB | 96,279 | 108,462 | 204,741 | 471,576 | 307,066 | 164,510 | 226,570 | 245,006 |
| MAR | 94,787 | 107,331 | 202,118 | 465,920 | 303,052 | 162,868 | 223,576 | 242,344 |
| AVERAGE | 96,207 | 108,251 | 204,458 | 470,957 | 306,820 | 164,137 | 226,178 | 244,779 |

ATP - Authorization to Participate
 Data is derived from NJ Division of Family Development's FAMIS report # FB-160.

GRAPH 5
Food Stamp Households
 March 1995 through March 1997



GRAPH 6
Food Stamp Recipients
 March 1995 through March 1997



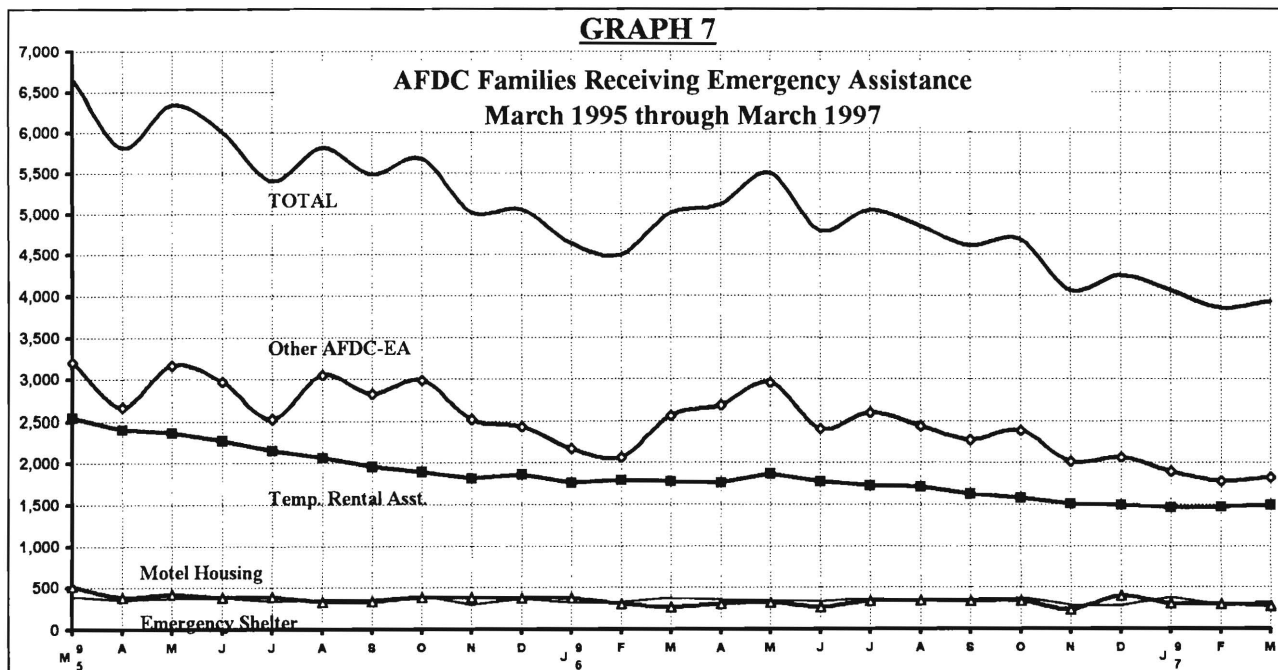
New Jersey Department of Human Services
Division of Family Development

TABLE 7

EMERGENCY ASSISTANCE Program for AFDC Recipients, State Summary
NUMBER OF ELIGIBLE FAMILIES RECEIVING EMERGENCY ASSISTANCE PAYMENTS
(UNDUPLICATED CASES)
March 1995 through March 1997

| | Total families receiving EA | Temporary rental assistance | Motel Housing | Emergency Shelter | Other AFDC-EA |
|-------------------|-----------------------------|-----------------------------|---------------|-------------------|---------------|
| 1995 MAR | 6,668 | 2,542 | 516 | 402 | 3,208 |
| APR | 5,815 | 2,402 | 387 | 351 | 2,675 |
| MAY | 6,338 | 2,364 | 427 | 381 | 3,166 |
| JUN | 6,007 | 2,268 | 382 | 387 | 2,970 |
| JUL | 5,402 | 2,149 | 389 | 334 | 2,530 |
| AUG | 5,813 | 2,068 | 331 | 362 | 3,052 |
| SEP | 5,482 | 1,958 | 336 | 364 | 2,824 |
| OCT | 5,678 | 1,891 | 388 | 410 | 2,989 |
| NOV | 5,024 | 1,816 | 384 | 302 | 2,522 |
| DEC | 5,048 | 1,864 | 377 | 369 | 2,438 |
| AVERAGE (12 mos.) | 5,755 | 2,201 | 405 | 369 | 2,779 |
| 1996 JAN | 4,639 | 1,761 | 374 | 325 | 2,179 |
| FEB | 4,490 | 1,788 | 305 | 330 | 2,067 |
| MAR | 5,001 | 1,779 | 270 | 388 | 2,564 |
| APR | 5,118 | 1,760 | 309 | 364 | 2,685 |
| MAY | 5,498 | 1,873 | 323 | 350 | 2,952 |
| JUN | 4,791 | 1,772 | 266 | 341 | 2,412 |
| JUL | 5,044 | 1,729 | 335 | 377 | 2,603 |
| AUG | 4,845 | 1,716 | 346 | 339 | 2,444 |
| SEP | 4,600 | 1,625 | 337 | 362 | 2,276 |
| OCT | 4,683 | 1,576 | 334 | 385 | 2,388 |
| NOV | 4,059 | 1,507 | 237 | 294 | 2,021 |
| DEC | 4,244 | 1,492 | 400 | 286 | 2,066 |
| AVERAGE | 4,751 | 1,698 | 320 | 345 | 2,388 |
| 1997 JAN | 4,059 | 1,462 | 310 | 382 | 1,905 |
| FEB | 3,847 | 1,473 | 296 | 292 | 1,786 |
| MAR | 3,926 | 1,494 | 278 | 327 | 1,827 |
| AVERAGE | 3,944 | 1,476 | 295 | 334 | 1,839 |

Data derived from NJ Division of Family Development FAMIS Report #FM457 and #FM430-03a.

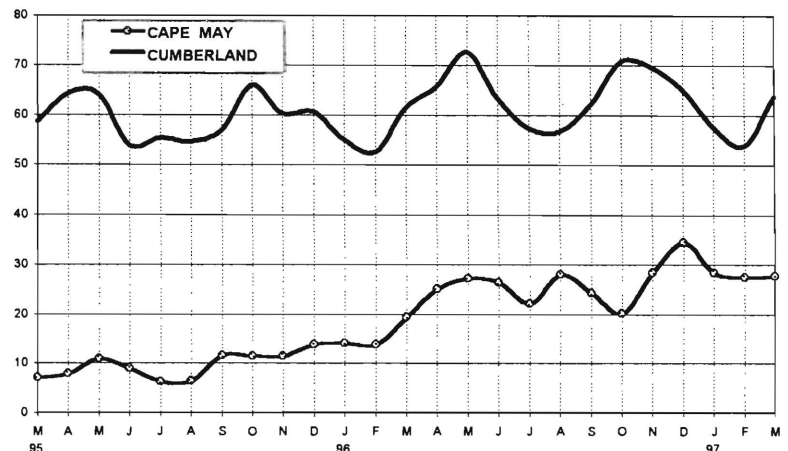
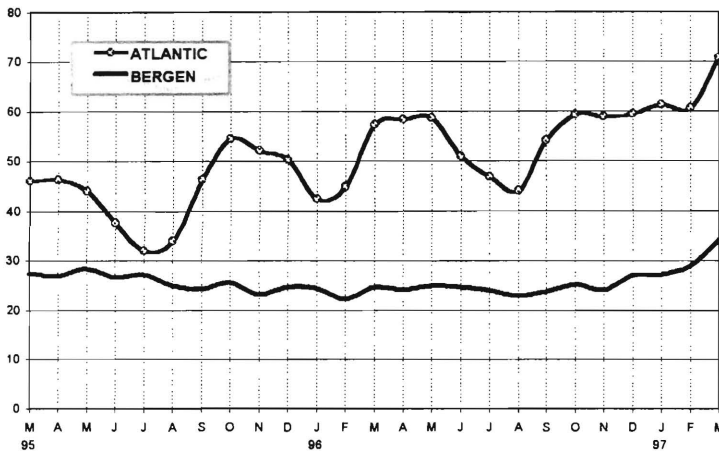
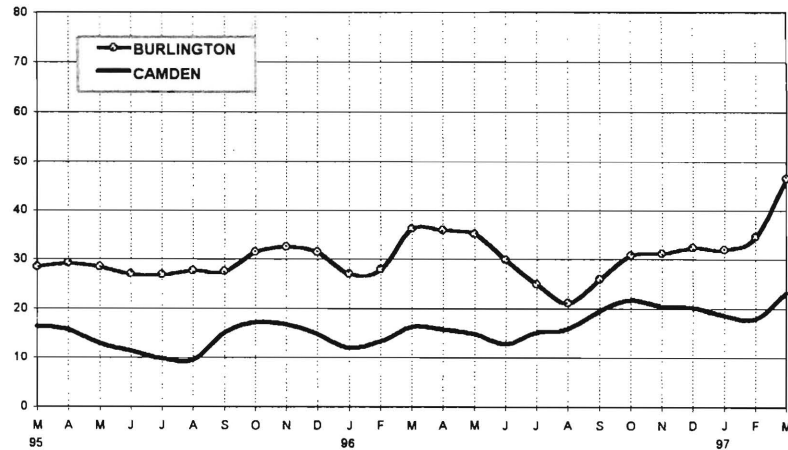
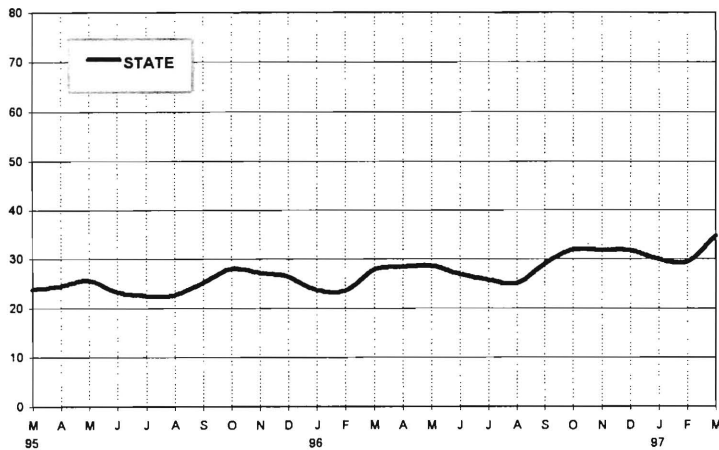


New Jersey Department of Human Services
Division of Family Development

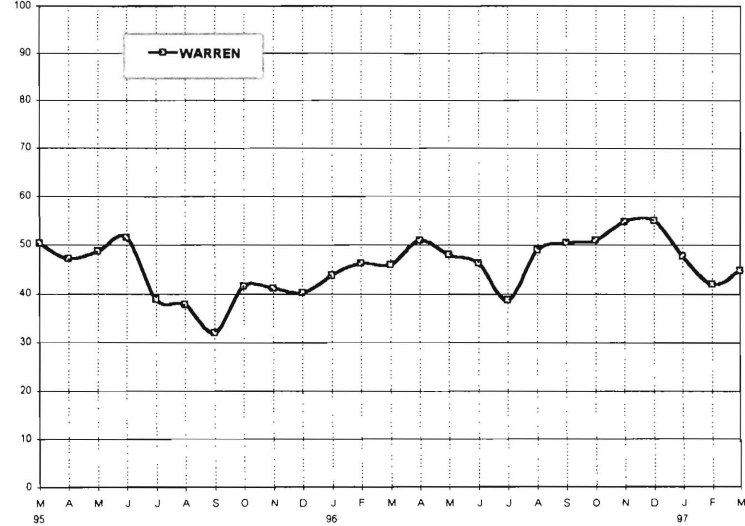
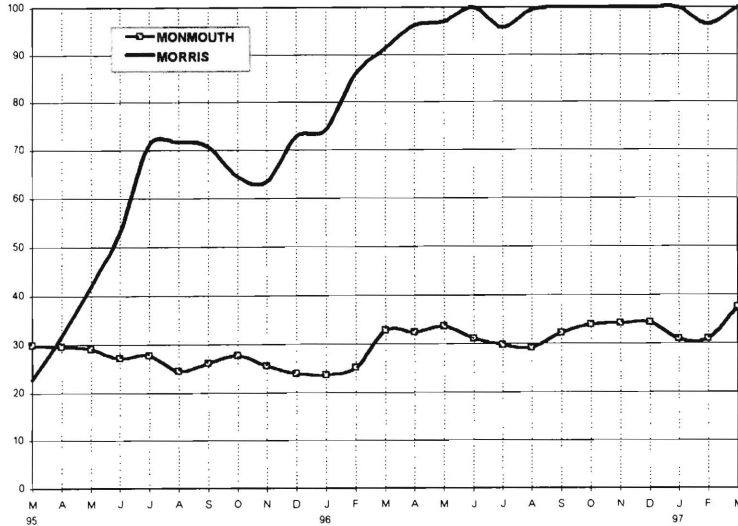
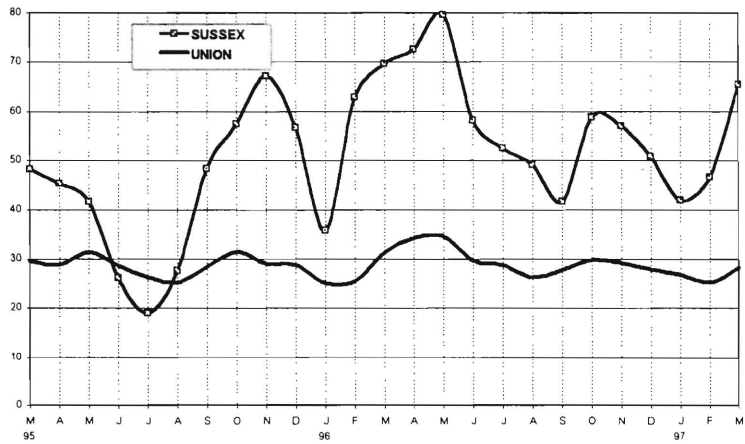
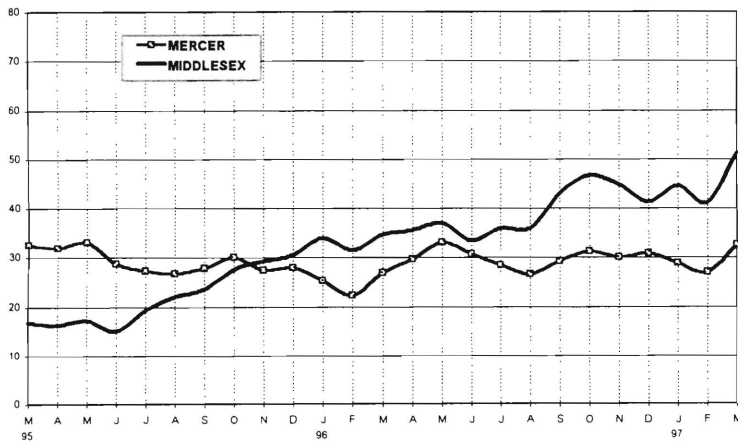
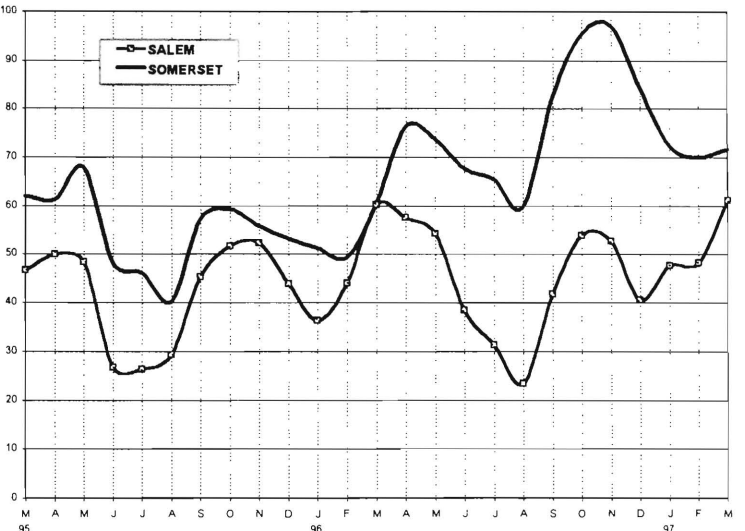
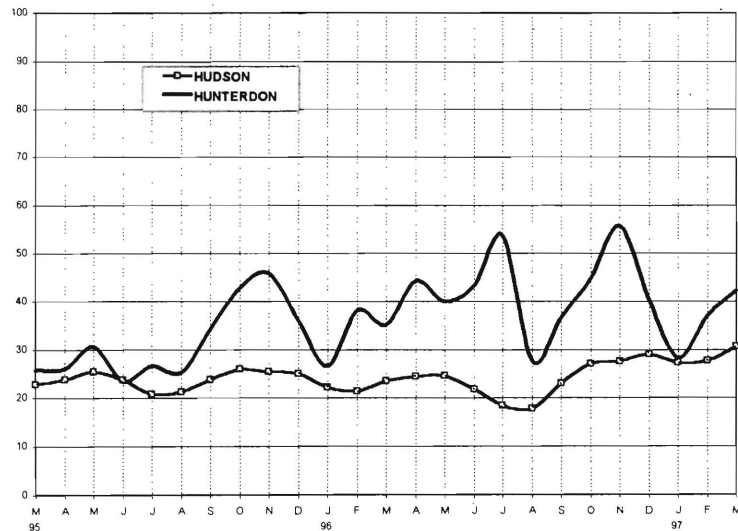
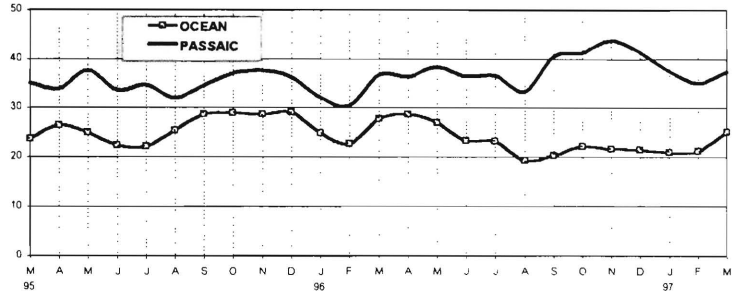
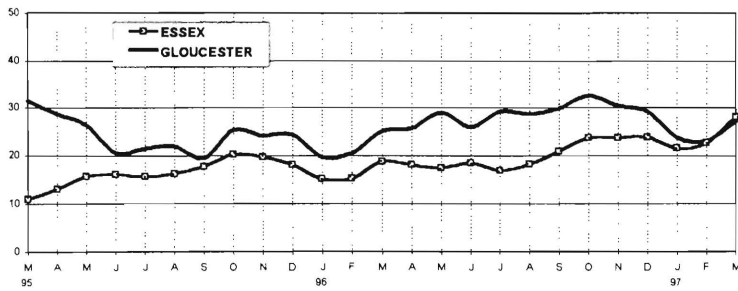
TABLE 8
JOBS/FDP PARTICIPATION RATES BY MONTH
(PERCENT)

| | STATE | ATLANTIC | BERGEN | BURLINGTON | CAMDEN | CAPE MAY | CUMBERLAND | ESSEX | GLOUCESTER | HUDSON | HUNTERDON | MERCER | MIDDLESEX | MONMOUTH | MORRIS | OCEAN | PASSAIC | SALEM | SOMERSET | SUSSEX | UNION | WARREN | | |
|-----|-------|----------|--------|------------|--------|----------|------------|-------|------------|--------|-----------|--------|-----------|----------|--------|-------|---------|-------|----------|--------|-------|--------|------|------|
| 95 | MAR | 23.8 | 46.1 | 27.3 | 28.5 | 16.3 | 7.2 | 58.6 | 11.0 | 31.6 | 22.9 | 25.8 | 32.5 | 16.9 | 29.9 | 22.9 | 23.6 | 35.1 | 46.6 | 62.0 | 48.2 | 29.6 | 50.3 | |
| | APR | 24.5 | 46.3 | 26.9 | 29.2 | 15.7 | 7.9 | 64.1 | 13.0 | 28.7 | 23.8 | 26.1 | 31.9 | 16.3 | 29.6 | 31.9 | 26.4 | 33.9 | 50.0 | 61.3 | 45.3 | 28.9 | 47.2 | |
| | MAY | 25.7 | 44.0 | 28.3 | 28.6 | 12.9 | 10.9 | 64.0 | 15.7 | 26.4 | 25.4 | 30.6 | 33.1 | 17.4 | 29.1 | 42.0 | 25.0 | 37.7 | 48.4 | 68.0 | 41.7 | 31.4 | 48.7 | |
| | JUN | 23.3 | 37.7 | 26.5 | 27.1 | 11.3 | 9.0 | 53.8 | 16.0 | 20.7 | 23.8 | 23.5 | 28.7 | 15.1 | 27.2 | 52.9 | 22.3 | 33.6 | 26.7 | 48.1 | 26.1 | 28.6 | 51.5 | |
| | JUL | 22.5 | 31.9 | 27.0 | 26.9 | 9.8 | 6.3 | 55.3 | 15.8 | 21.5 | 20.8 | 26.6 | 27.3 | 19.2 | 27.7 | 71.0 | 22.1 | 34.7 | 26.3 | 46.1 | 19.0 | 26.3 | 38.9 | |
| | AUG | 22.6 | 33.9 | 24.8 | 27.7 | 9.5 | 6.5 | 54.6 | 16.2 | 22.0 | 21.2 | 25.2 | 26.7 | 22.0 | 24.5 | 71.7 | 25.4 | 32.0 | 29.4 | 40.3 | 27.7 | 25.2 | 37.8 | |
| | SEP | 25.2 | 46.4 | 24.2 | 27.6 | 15.1 | 11.7 | 56.9 | 17.7 | 19.5 | 23.8 | 34.3 | 27.8 | 23.6 | 26.2 | 70.7 | 28.6 | 34.5 | 45.3 | 57.3 | 48.4 | 28.4 | 32.0 | |
| | OCT | 27.9 | 54.6 | 25.5 | 31.5 | 17.1 | 11.4 | 65.9 | 20.2 | 25.3 | 26.0 | 42.7 | 30.1 | 27.5 | 27.8 | 64.4 | 28.9 | 37.0 | 51.7 | 59.3 | 57.5 | 31.4 | 41.7 | |
| | NOV | 27.2 | 52.2 | 23.1 | 32.5 | 16.8 | 11.5 | 60.2 | 19.7 | 24.1 | 25.4 | 45.8 | 27.4 | 29.3 | 25.6 | 63.3 | 28.6 | 37.6 | 52.4 | 55.8 | 67.2 | 29.0 | 41.3 | |
| | DEC | 26.4 | 50.3 | 24.5 | 31.5 | 14.8 | 13.9 | 60.6 | 18.1 | 24.4 | 25.0 | 35.9 | 28.0 | 30.6 | 23.9 | 72.6 | 28.9 | 36.2 | 43.9 | 53.2 | 56.7 | 28.8 | 40.3 | |
| | 96 | JAN | 23.7 | 42.5 | 24.3 | 27.1 | 12.0 | 14.1 | 55.1 | 15.2 | 19.7 | 22.2 | 26.7 | 25.3 | 34.0 | 23.6 | 74.1 | 24.8 | 32.1 | 36.3 | 51.3 | 35.8 | 25.2 | 43.8 |
| | | FEB | 23.5 | 44.9 | 22.2 | 27.9 | 13.3 | 13.9 | 52.6 | 15.3 | 20.5 | 21.5 | 38.0 | 22.3 | 31.5 | 25.1 | 85.9 | 22.6 | 30.4 | 43.9 | 49.4 | 62.9 | 25.5 | 46.3 |
| MAR | | 27.8 | 57.3 | 24.5 | 36.2 | 16.2 | 19.4 | 61.5 | 18.7 | 25.1 | 23.5 | 35.2 | 26.9 | 34.6 | 32.8 | 91.4 | 27.6 | 36.8 | 60.2 | 60.6 | 69.6 | 31.3 | 45.9 | |
| APR | | 28.3 | 58.3 | 24.0 | 35.9 | 15.7 | 25.1 | 65.6 | 18.1 | 25.7 | 24.4 | 44.3 | 29.7 | 35.5 | 32.5 | 96.2 | 28.6 | 36.4 | 57.6 | 76.4 | 72.6 | 34.2 | 50.9 | |
| MAY | | 28.6 | 58.6 | 24.9 | 35.1 | 14.8 | 27.2 | 72.7 | 17.4 | 29.0 | 24.6 | 40.0 | 33.0 | 36.9 | 33.7 | 97.1 | 26.9 | 38.5 | 54.3 | 73.7 | 79.7 | 34.6 | 48.0 | |
| JUN | | 26.9 | 50.9 | 24.6 | 30.0 | 12.7 | 26.4 | 63.4 | 18.5 | 26.0 | 21.8 | 43.4 | 30.7 | 33.4 | 31.1 | 100.0 | 23.3 | 36.5 | 38.4 | 67.8 | 58.2 | 29.7 | 46.3 | |
| JUL | | 25.7 | 46.9 | 23.9 | 25.0 | 15.0 | 22.2 | 57.3 | 16.9 | 29.2 | 18.4 | 53.8 | 28.5 | 36.0 | 29.8 | 95.8 | 23.1 | 36.7 | 31.3 | 65.6 | 52.5 | 28.8 | 38.8 | |
| AUG | | 25.1 | 44.1 | 22.9 | 21.2 | 15.9 | 27.9 | 56.6 | 18.2 | 28.7 | 17.8 | 27.7 | 26.7 | 36.0 | 29.2 | 99.5 | 19.2 | 33.4 | 23.4 | 59.9 | 49.1 | 26.4 | 48.9 | |
| SEP | | 29.0 | 54.1 | 23.7 | 26.0 | 19.5 | 24.3 | 62.1 | 20.9 | 30.0 | 23.0 | 36.6 | 29.3 | 43.0 | 32.3 | 100.0 | 20.2 | 40.5 | 41.8 | 82.7 | 41.7 | 27.8 | 50.4 | |
| OCT | | 31.9 | 59.3 | 25.0 | 30.8 | 21.8 | 20.2 | 70.6 | 23.7 | 32.6 | 27.1 | 44.7 | 31.2 | 46.7 | 34.0 | 100.0 | 22.1 | 41.3 | 53.9 | 95.5 | 58.7 | 29.8 | 51.0 | |
| NOV | | 31.8 | 58.9 | 24.0 | 31.2 | 20.4 | 28.4 | 69.5 | 23.7 | 30.5 | 27.5 | 55.7 | 30.0 | 44.8 | 34.2 | 100.0 | 21.6 | 43.8 | 52.7 | 97.1 | 57.1 | 29.3 | 54.7 | |
| DEC | | 31.8 | 59.4 | 26.9 | 32.4 | 20.2 | 34.5 | 65.1 | 23.8 | 29.2 | 29.0 | 40.3 | 30.8 | 41.3 | 34.4 | 100.0 | 21.5 | 41.4 | 40.6 | 84.3 | 50.8 | 27.9 | 55.1 | |
| 97 | JAN | 29.9 | 61.2 | 27.0 | 32.0 | 18.6 | 28.3 | 57.7 | 21.6 | 23.9 | 27.2 | 28.4 | 28.9 | 44.5 | 31.0 | 100.0 | 21.0 | 37.5 | 47.7 | 72.4 | 41.9 | 26.9 | 47.8 | |
| | FEB | 29.4 | 60.6 | 28.9 | 34.6 | 17.9 | 27.4 | 53.9 | 22.6 | 23.1 | 27.7 | 37.0 | 27.0 | 41.2 | 31.0 | 96.4 | 21.2 | 35.0 | 48.2 | 70.0 | 46.7 | 25.2 | 42.1 | |
| | MAR | 34.7 | 70.8 | 34.3 | 46.4 | 23.3 | 27.7 | 63.7 | 28.0 | 27.0 | 30.6 | 42.3 | 32.5 | 51.3 | 37.5 | 100.0 | 25.0 | 37.4 | 61.2 | 71.7 | 65.4 | 28.3 | 44.8 | |

GRAPH 8
JOBS/FDP PARTICIPATION RATES (%)



GRAPH 8 (CONTINUED)
JOBS/FDP PARTICIPATION RATES (%)

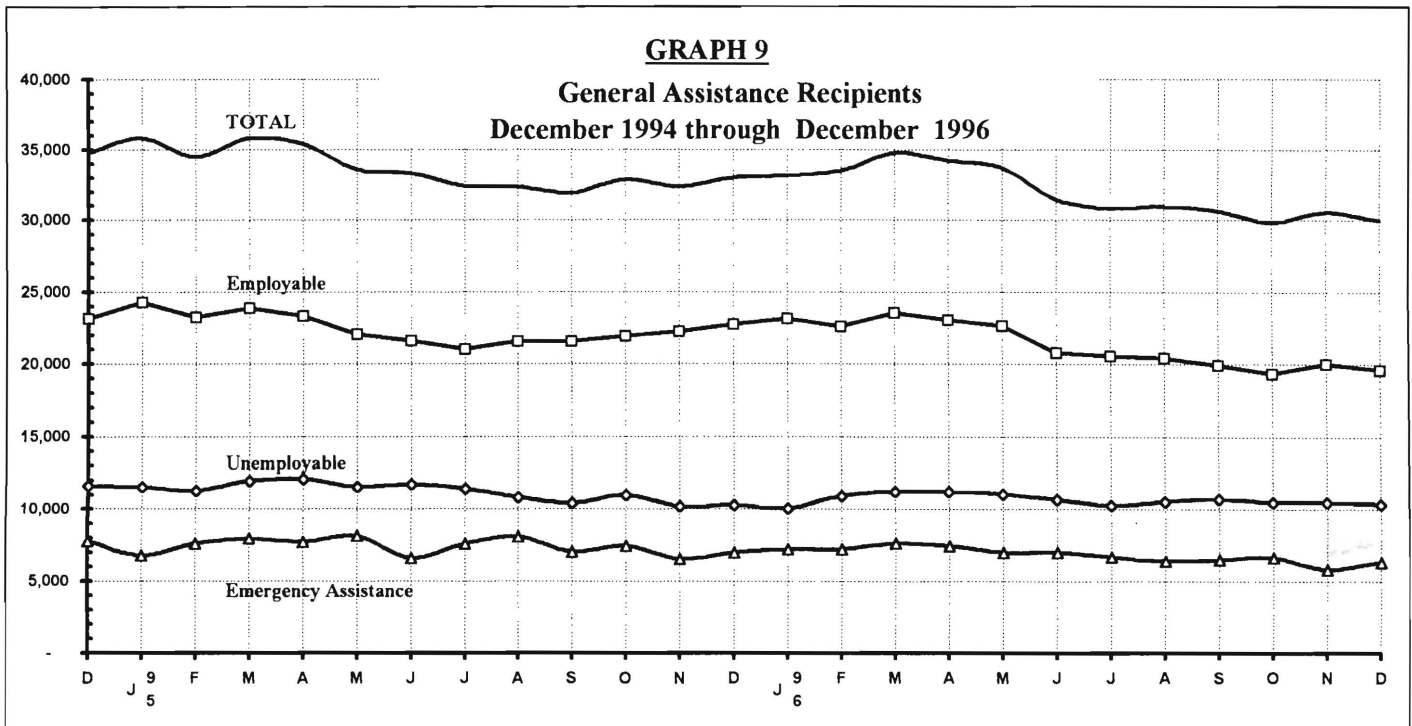


New Jersey Department of Human Services
 Division of Family Development

TABLE 9
GENERAL ASSISTANCE Program, State Summary
NUMBER OF EMPLOYABLE AND UNEMPLOYABLE RECIPIENTS
AND EMERGENCY ASSISTANCE PAYMENTS DURING REPORT MONTH
 December 1994 through December 1996

| | All Persons Aided | | | Emergency Assistance Payments | | |
|-------------------|-------------------|--------------|--------|-------------------------------|-------------|-------|
| | Employable | Unemployable | Total | Temporary Rental Assistance | Other GA-EA | Total |
| 1994 Dec | 23,142 | 11,642 | 34,784 | 4,657 | 3,137 | 7,794 |
| AVERAGE (12 mos.) | 24,374 | 11,813 | 36,187 | 4,651 | 3,181 | 7,832 |
| 1995 JAN | 24,262 | 11,537 | 35,799 | 4,408 | 2,343 | 6,751 |
| FEB | 23,219 | 11,264 | 34,483 | 4,851 | 2,748 | 7,599 |
| MAR | 23,855 | 11,976 | 35,831 | 5,036 | 2,909 | 7,945 |
| APR | 23,337 | 12,082 | 35,419 | 4,833 | 2,887 | 7,720 |
| MAY | 22,046 | 11,527 | 33,573 | 4,995 | 3,135 | 8,130 |
| JUN | 21,575 | 11,738 | 33,313 | 4,423 | 2,146 | 6,569 |
| JUL | 21,000 | 11,391 | 32,391 | 4,048 | 3,526 | 7,574 |
| AUG | 21,526 | 10,829 | 32,355 | 4,174 | 3,909 | 8,083 |
| SEP | 21,525 | 10,389 | 31,914 | 4,110 | 2,945 | 7,055 |
| OCT | 21,913 | 10,959 | 32,872 | 3,939 | 3,497 | 7,436 |
| NOV | 22,206 | 10,171 | 32,377 | 4,141 | 2,422 | 6,563 |
| DEC | 22,732 | 10,268 | 33,000 | 4,086 | 2,902 | 6,988 |
| AVERAGE | 22,433 | 11,178 | 33,611 | 4,420 | 2,947 | 7,368 |
| 1996 JAN | 23,140 | 10,054 | 33,194 | 4,421 | 2,803 | 7,224 |
| FEB | 22,584 | 10,927 | 33,511 | 4,567 | 2,651 | 7,218 |
| MAR | 23,528 | 11,243 | 34,771 | 4,472 | 3,185 | 7,657 |
| APR | 23,028 | 11,221 | 34,249 | 4,490 | 2,944 | 7,434 |
| MAY | 22,657 | 11,054 | 33,711 | 4,064 | 2,947 | 7,011 |
| JUN | 20,785 | 10,667 | 31,452 | 4,283 | 2,716 | 6,999 |
| JUL | 20,546 | 10,282 | 30,828 | 3,754 | 2,922 | 6,676 |
| AUG | 20,416 | 10,552 | 30,968 | 3,958 | 2,448 | 6,406 |
| SEP | 19,895 | 10,741 | 30,636 | 3,905 | 2,597 | 6,502 |
| OCT | 19,310 | 10,514 | 29,824 | 3,894 | 2,728 | 6,622 |
| NOV | 20,019 | 10,508 | 30,527 | 3,662 | 2,166 | 5,828 |
| DEC | 19,582 | 10,369 | 29,951 | 3,725 | 2,574 | 6,299 |
| AVERAGE | 21,291 | 10,678 | 31,969 | 4,100 | 2,723 | 6,823 |

Data Sources: NJ Division of Family Development, GA Fiscal Unit



New Jersey Department of Human Services
Division of Family Development

TABLE 10
CHILD SUPPORT AND PATERNITY COLLECTIONS
State Summary

| COLLECTION SOURCE | Comparison of FFY 1996 and FFY 1997 | | |
|-------------------------------|-------------------------------------|----------------------|--------------|
| | 10/95-3/96 | 10/96-3/97 | % change |
| AFDC & FOSTER CARE | | | |
| Federal Tax | \$6,749,595 | \$7,707,660 | 14.2% |
| State Tax | 922,379 | 822,971 | -10.8% |
| Unempl. Ins. Ben. | 2,689,648 | 3,001,801 | 11.6% |
| Income Withholding | 21,225,922 | 20,941,264 | -1.3% |
| Other/Own Behalf | 7,375,710 | 9,416,070 | 27.7% |
| From Other States | 1,647,114 | 1,939,279 | 17.7% |
| For Other States | 3,724,723 | 4,263,356 | 14.5% |
| TOTAL COLLECTION | \$44,335,091 | \$48,092,401 | 8.5% |
| TOTAL DISTRIBUTION | \$41,715,983 | \$42,340,975 | 1.5% |
| NON- AFDC | | | |
| Federal Tax | \$3,493,942 | \$3,273,498 | -6.3% |
| State Tax | 1,167,698 | 1,220,099 | 4.5% |
| Unempl. Ins. Ben. | 9,762,722 | 9,161,811 | -6.2% |
| Income Withholding | 121,661,041 | 136,703,876 | 12.4% |
| Other/Own Behalf | 60,072,125 | 66,727,469 | 11.1% |
| From Other States | 10,053,246 | 11,462,625 | 14.0% |
| For Other States | 13,978,147 | 15,158,974 | 8.4% |
| TOTAL COLLECTION | \$220,188,921 | \$243,708,352 | 10.7% |
| TOTAL DISTRIBUTION | \$205,669,155 | \$239,627,999 | 16.5% |
| TOTAL | | | |
| Federal Tax | \$10,243,537 | \$10,981,158 | 7.2% |
| State Tax | \$2,090,077 | \$2,043,070 | -2.2% |
| Unempl. Ins. Ben. | \$12,452,370 | \$12,163,612 | -2.3% |
| Income Withholding | \$142,886,963 | \$157,645,140 | 10.3% |
| Other/Own Behalf | \$67,447,835 | \$76,143,539 | 12.9% |
| From Other States | \$11,700,360 | \$13,401,904 | 14.5% |
| For Other States | \$17,702,870 | \$19,422,330 | 9.7% |
| TOTAL COLLECTION | \$264,524,012 | \$291,800,753 | 10.3% |
| TOTAL DISTRIBUTION | \$247,385,138 | \$281,968,974 | 14.0% |

Distributed amount represents collections reported and recognized by the Federal Office of
Child Support Enforcement for calculating incentives and annual report to Congress
Source: DFD Office of Child Support and Paternity Programs

Explanatory Notes

The Department of Human Services Division of Family Development provides basic income and an opportunity to achieve self-sufficiency for individuals and families served by the Division's programs. The Division provides leadership, direction and supervision to those public agencies responsible for administering those programs and plans for and develops policies to promote self-sufficiency.

AID TO FAMILIES WITH DEPENDENT CHILDREN (AFDC) - Financial assistance for dependent children and their natural or adoptive parents, or certain other relatives recognized as taking the place of a parent.

Regular AFDC (C Segment) - assistance when only one parent is in the home due to death or absence, or both parents are in the home but at least one is incapacitated.

Unemployed Parents (F Segment) - assistance when both parents are in the home, neither is incapacitated and the primary wage earner meets the federally defined criteria for unemployment.

State AFDC (N Segment) - assistance when both parents are in the home, neither is incapacitated, and the primary wage earner does not meet the federal definition of unemployment.

Medicaid Only - families no longer receiving AFDC financial assistance but remaining eligible for Medicaid under applicable provisions which extend coverage beyond period of AFDC assistance.

FOOD STAMP PROGRAM (FS) - Authorized by Congress as a nutritional supplement program to provide low income households with more food of greater variety and better nutrition. Program eligibility is based on household income, resources, and expenses for medical, shelter, and dependent care. CWA staff refer certain recipients to the New Jersey Department of Labor for participation in the Food Stamp Employment and Training Program.

EMERGENCY ASSISTANCE (EA) - Payments to those eligible for AFDC, Supplemental Security Income or General Assistance, authorized during the 30 consecutive days immediately following the emergency (defined as a substantial loss of shelter, food, clothing, or household furnishings by fire, flood or other similar disaster) or if the eligible individual or family is in an imminent or actual state of homelessness.

JOBS/FDP

JOB OPPORTUNITY AND BASIC SKILLS PROGRAM (JOBS) - Federally mandated work/training program for recipients of AFDC established by the Family Support Act of 1988 under Part F of Title IV of the Social Security Act.

FAMILY DEVELOPMENT PROGRAM (FDP) - Reform legislation enacted by the State Legislature in January 1992 to: build, strengthen, and support the family unit; encourage family formation; reduce the long-term aspects of welfare dependency; look to the needs of the family unit as a whole; emphasize education and training for all family members; maximize use of educational, training and employment resources; and develop genuine private sector job opportunities.

SNAPSHOT OF ACTIVITY AT POINT IN TIME - Status of activities as of the end of the month:

Total Non-Exempt JOBS/FDP Recipients - Calculation of the number of mandatory IV-F individuals (FAMIS report # FB304).

Employment Directed Activities (EDA) - From Activities Summary Report (OMEGA report # RM064). Unduplicated count of persons participating in **Training, Education, or Job Search**.

Participants in EDA, Receiving Support Services - From Issuance Disbursement Summary (OMEGA report # RM703). Total number of active participants who show receipt of **Training Related Expenses** or **Child Care**.

Participation Rate (JOBS/FDP) - Federally mandated calculation method, dividing the number of participants whose combined and averaged weekly hours of participation in qualifying activities equals or exceeds 20 hours per week by the total number of non-exempt IV-F recipients. As of the end of the month.

ACTIVITY FOR THE MONTH - Number of participants with the indicated activity during the month:

Participants with First Case Management Interview - From Activities Summary Report (OMEGA report # RM064).

Number of Persons Employed This Month, Still Receiving AFDC - From Activities Summary Report (OMEGA report # RM064).

Number of Persons Closed on FAMIS Due to Earnings - From FAMIS report # FM463.

Post AFDC and Receiving Child Care - Persons no longer in receipt of AFDC, but still receiving child care. From Issuance Disbursement Summary (OMEGA report # RM703).

New Jersey Department of Human Services
Division of Family Development

TABLE 11
GENERAL ASSISTANCE Program
EMPLOYABLE AND UNEMPLOYABLE RECIPIENTS AND EMERGENCY ASSISTANCE RECIPIENTS
COUNTIES AND 21 LARGEST MUNICIPALITIES
December 1996

| County/ Municipality | Total Persons Aided | | | Emergency Assistance Payments | | |
|-------------------------|---------------------|---------------|---------------|-------------------------------|----------------|--------------|
| | Employable | Unemployable | Total | Temporary Rental Assist. | Other GA-EA | Total |
| ATLANTIC | 991 | 558 | 1,549 | 65 | 24 | 89 |
| BERGEN | 436 | 414 | 850 | 223 | 96 | 319 |
| BURLINGTON | 359 | 362 | 721 | 132 | 94 | 226 |
| CAMDEN | 1,811 | 982 | 2,793 | 195 | 62 | 257 |
| CAPE MAY | 120 | 97 | 217 | 22 | 10 | 32 |
| CUMBERLAND | 326 | 164 | 490 | 7 | 11 | 18 |
| ESSEX | 6,683 | 2,276 | 8,959 | 716 | 1,426 | 2,142 |
| GLOUCESTER | 155 | 165 | 320 | 18 | 15 | 33 |
| HUDSON | 901 | 1,179 | 2,080 | 139 | 22 | 161 |
| HUNTERDON | 37 | 52 | 89 | 15 | 11 | 26 |
| MERCER | 1,761 | 703 | 2,464 | 294 | 224 | 518 |
| MIDDLESEX | 424 | 503 | 927 | 71 | 35 | 106 |
| MONMOUTH | 592 | 633 | 1,225 | 270 | 85 | 355 |
| MORRIS | 108 | 189 | 297 | 38 | 25 | 63 |
| OCEAN | 599 | 384 | 983 | 325 | 154 | 479 |
| PASSAIC | 2,320 | 673 | 2,993 | 460 | 146 | 606 |
| SALEM | 143 | 43 | 186 | 13 | 22 | 35 |
| SOMERSET | 85 | 79 | 164 | 37 | 8 | 45 |
| SUSSEX | 36 | 49 | 85 | 28 | 9 | 37 |
| UNION | 1,642 | 804 | 2,446 | 627 | 93 | 720 |
| WARREN | 53 | 60 | 113 | 30 | 2 | 32 |
| TOTAL NJ | 19,582 | 10,369 | 29,951 | 3,725 | 2,574 | 6,299 |
| Atlantic City | 823 | 318 | 1,141 | 54 | 18 | 72 |
| Mount Holly | 115 | 69 | 184 | 47 | 62 | 109 |
| Camden | 1,552 | 627 | 2,179 | 132 | 12 | 144 |
| Vineland | 171 | 89 | 260 | 3 | 5 | 8 |
| East Orange | 442 | 366 | 808 | 207 | 22 | 229 |
| Irvington | 310 | 115 | 425 | 49 | 7 | 56 |
| Montclair | 110 | 79 | 189 | 29 | 12 | 41 |
| Newark | 5,351 | 1,494 | 6,845 | 353 | 1,379 | 1,732 |
| Orange | 358 | 65 | 423 | 50 | 2 | 52 |
| Bayonne | 107 | 59 | 166 | 6 | 1 | 7 |
| Hoboken | 131 | 105 | 236 | 17 | 3 | 20 |
| Jersey City | 511 | 513 | 1,024 | 70 | 11 | 81 |
| Trenton | 1,664 | 601 | 2,265 | 259 | 212 | 471 |
| Perth Amboy | 100 | 113 | 213 | 9 | 2 | 11 |
| Asbury Park | 159 | 104 | 263 | 77 | 0 | 77 |
| Long Branch | 158 | 104 | 262 | 53 | 35 | 88 |
| Lakewood | 291 | 120 | 411 | 168 | 38 | 206 |
| Passaic | 547 | 283 | 830 | 205 | 41 | 246 |
| Paterson | 1,681 | 268 | 1,949 | 209 | 96 | 305 |
| Elizabeth | 1,053 | 417 | 1,470 | 474 | 39 | 513 |
| Plainfield | 232 | 131 | 363 | 34 | 2 | 36 |
| Total | 15,866 | 6,040 | 21,906 | 2,505 | 1,999 | 4,504 |

Source: NJ Division of Family Development, GA Fiscal Unit

New Jersey Department of Human Services
Division of Family Development

TABLE 12
CHILD SUPPORT AND PATERNITY
NUMBER OF CASES REMAINING OPEN, QUARTER ENDING MARCH 1997

| | CASES WITH ORDERS | | | OTHER CASES (1) | | TOTAL | TOTAL | TOTAL |
|-----------------|-------------------------|--|----------------|-------------------------|---------------|-------------------------|----------------|----------------|
| | AFDC AND FOSTER CARE | AFDC AND FOSTER CARE ARREARS (2) | NON-AFDC | AFDC AND FOSTER CARE | NON-AFDC | AFDC AND FOSTER CARE | NON-AFDC | ALL CASES |
| Atlantic | 2,259 | 4,330 | 10,239 | 3,127 | 4,628 | 9,716 | 14,867 | 24,583 |
| Bergen | 1,502 | 1,840 | 8,822 | 1,397 | 1,267 | 4,739 | 10,089 | 14,828 |
| Burlington | 1,888 | 2,991 | 10,623 | 2,120 | 2,660 | 6,999 | 13,283 | 20,282 |
| Camden | 9,108 | 10,165 | 22,656 | 7,880 | 6,669 | 27,153 | 29,325 | 56,478 |
| Cape May | 757 | 1,034 | 3,452 | 463 | 336 | 2,254 | 3,788 | 6,042 |
| Cumberland | 3,704 | 4,757 | 10,700 | 649 | 476 | 9,110 | 11,176 | 20,286 |
| Essex | 15,884 | 16,327 | 37,627 | 24,474 | 15,484 | 56,685 | 53,111 | 109,796 |
| Gloucester | 1,669 | 2,292 | 6,551 | 1,190 | 1,423 | 5,151 | 7,974 | 13,125 |
| Hudson | 7,759 | 7,316 | 19,459 | 11,017 | 9,124 | 26,092 | 28,583 | 54,675 |
| Hunterdon | 142 | 272 | 1,624 | 80 | 116 | 494 | 1,740 | 2,234 |
| Mercer | 4,378 | 5,454 | 12,803 | 3,711 | 3,783 | 13,543 | 16,586 | 30,129 |
| Middlesex | 3,057 | 4,823 | 15,059 | 3,275 | 3,364 | 11,155 | 18,423 | 29,578 |
| Monmouth | 3,500 | 4,734 | 13,136 | 2,203 | 2,389 | 10,437 | 15,525 | 25,962 |
| Morris | 398 | 514 | 3,794 | 621 | 762 | 1,533 | 4,556 | 6,089 |
| Ocean | 1,772 | 2,983 | 9,953 | 2,125 | 2,601 | 6,880 | 12,554 | 19,434 |
| Passaic | 5,190 | 5,665 | 15,960 | 5,766 | 6,061 | 16,621 | 22,021 | 38,642 |
| Salem | 1,025 | 1,394 | 3,430 | 277 | 251 | 2,696 | 3,681 | 6,377 |
| Somerset | 519 | 621 | 3,251 | 643 | 861 | 1,783 | 4,112 | 5,895 |
| Sussex | 248 | 478 | 2,130 | 251 | 213 | 977 | 2,343 | 3,320 |
| Union | 3,599 | 4,486 | 13,232 | 4,751 | 4,055 | 12,836 | 17,287 | 30,123 |
| Warren | 550 | 971 | 2,890 | 188 | 155 | 1,709 | 3,045 | 4,754 |
| NJ TOTAL | 68,908 | 83,447 | 227,391 | 76,208 | 66,678 | 228,563 | 294,069 | 522,632 |

Data Sources: Automated Child Support Enforcement System #CS199-3

(1) - Needing location, paternity, or other services to establish an obligation

(2) - Cases with arrears *only*

