



# Innovative Congestion Relief and Safety Initiatives in Lakewood Township

**Ocean County Board of Trustees**

July 14, 2025



Engineering | Design | Planning | Construction Management



# Agenda

- Project Team
- Project Location
- Existing Conditions / Key Issues
- Alternatives Development
- Preliminary Preferred Alternative (PPA)
- Public Outreach Methods



# Project Team



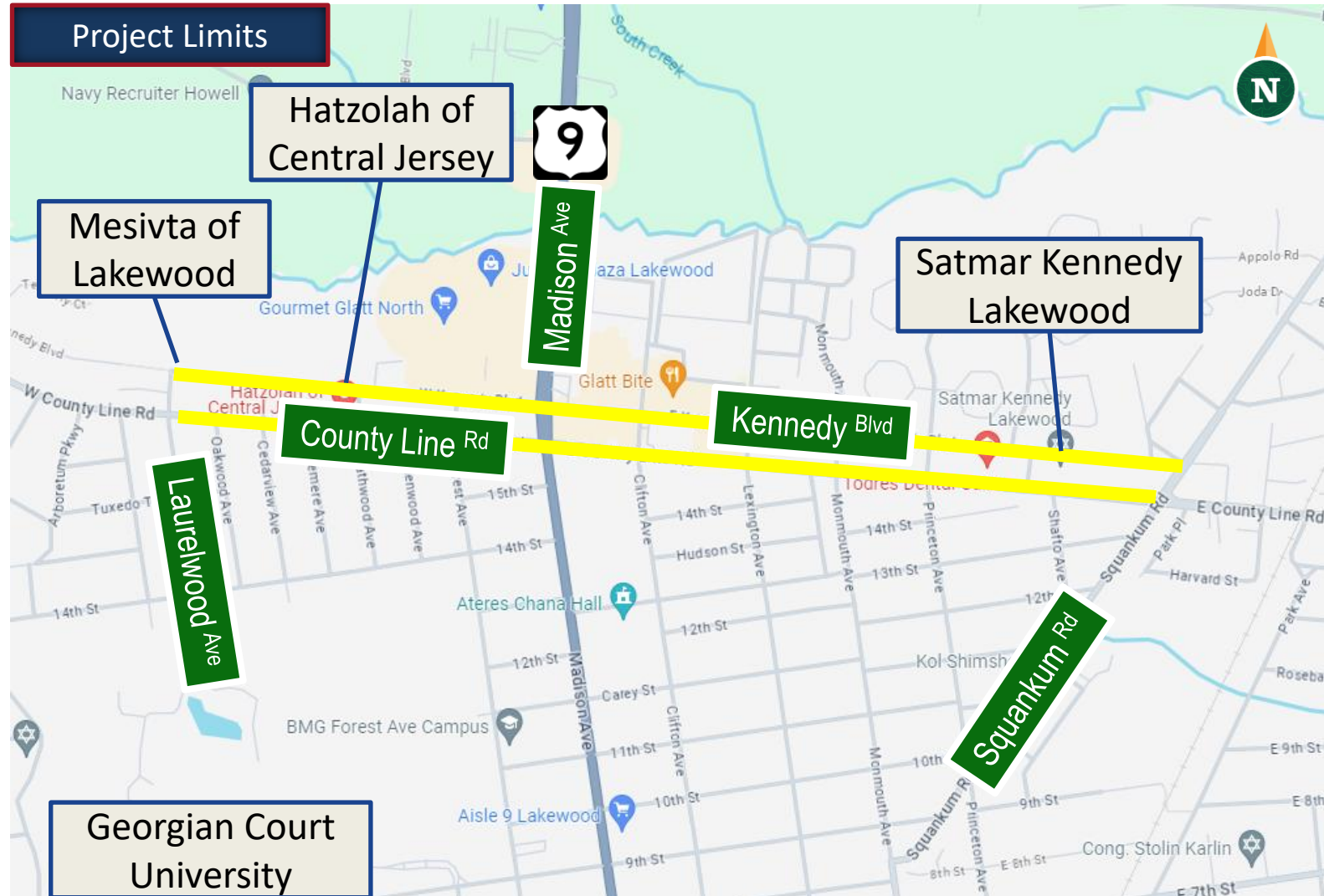
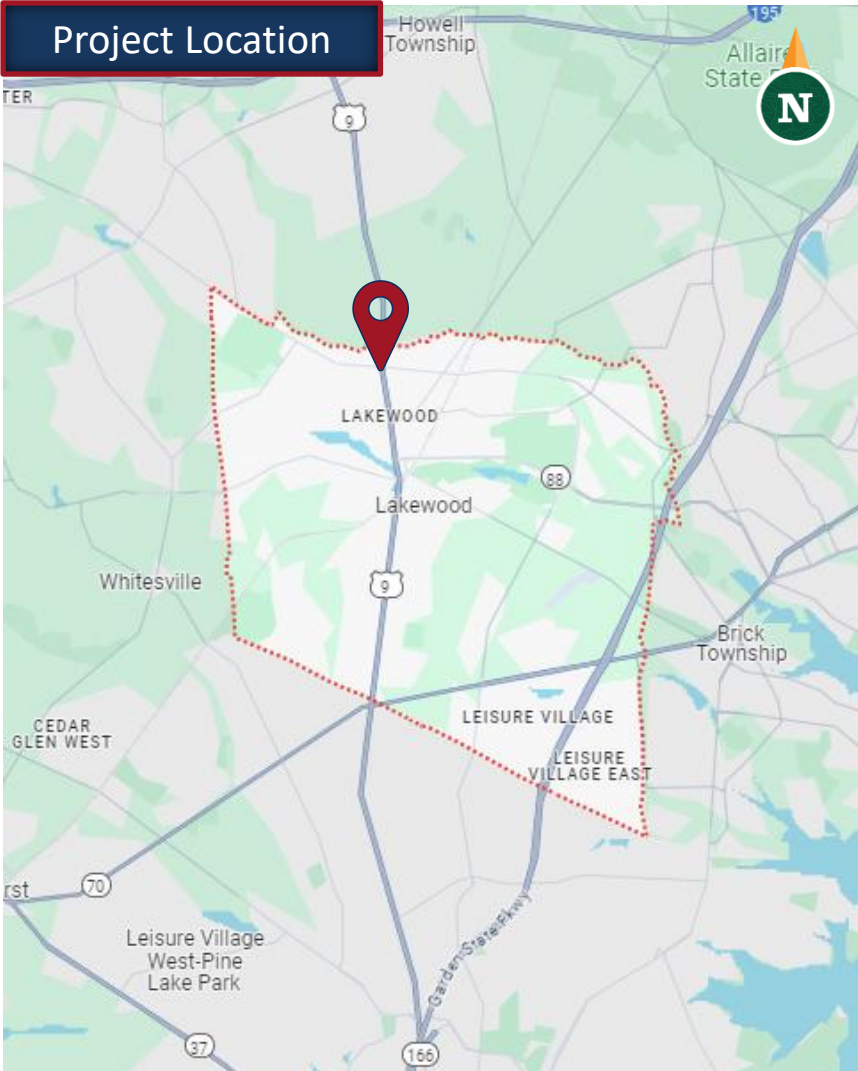
**GPI**



**DRESDNER  
ROBIN**



# Project Location / Limits



NJTPA

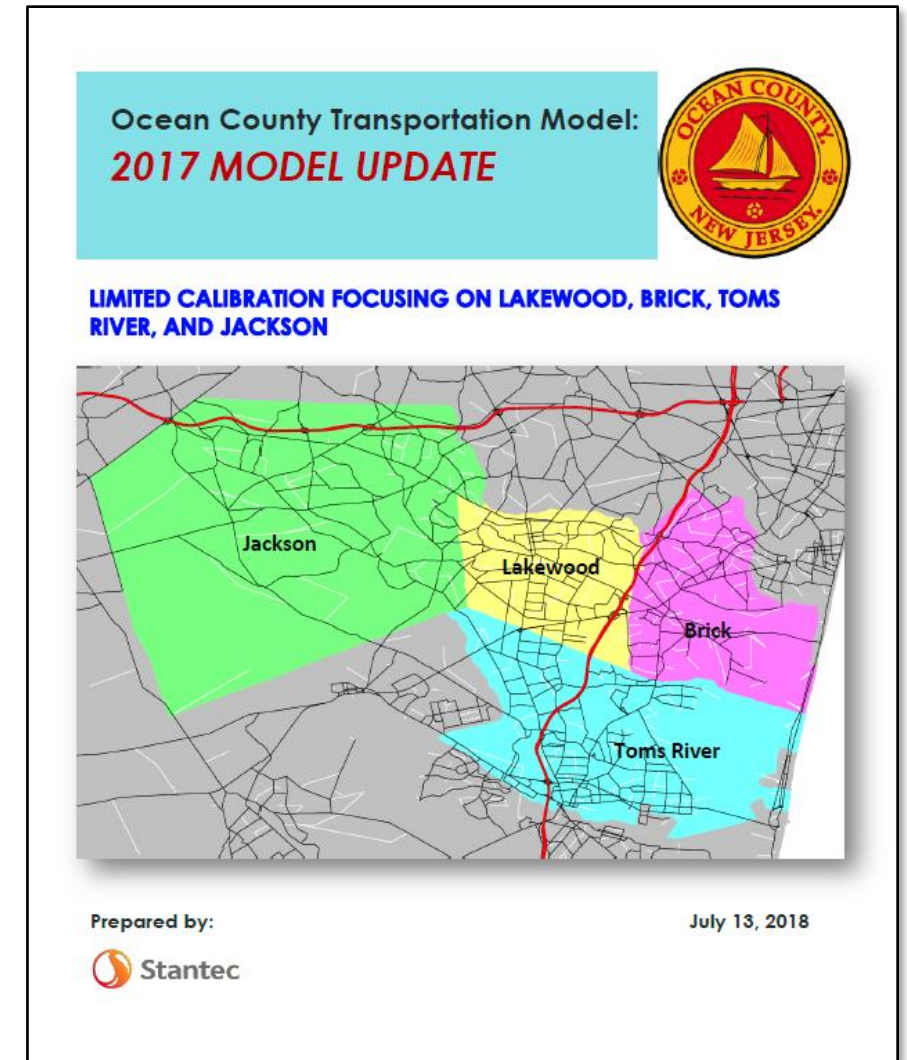
GPI

URBAN ENGINEERS

# Existing Conditions / Key Issues

## Traffic Projections

- Ocean County Transportation Model Update 2017
  - Both corridors exceed capacity by 2025
  - Recommendations to improve capacity:
    - *County Line Road – add through lane*
    - *Kennedy Boulevard – Add TWLTL*
- 2050 Volume Projections
  - NJTPA Population and Employment
  - NJTPA Regional Transportation Model
  - Use most conservative projection
  - 2023-2050 Growth Rate = **1.144**



# Existing Conditions / Key Issues

## County Line Road (CR 526):

- 4 / 2 travel lanes west / east of Heathwood Ave
- Posted 45 / 40 mph west/east of Forest Avenue

## Kennedy Boulevard (CR 6):

- 2 travel lanes throughout
- Posted 30 mph (Lexington Ave to Forest Ave), remainder posted 40 mph

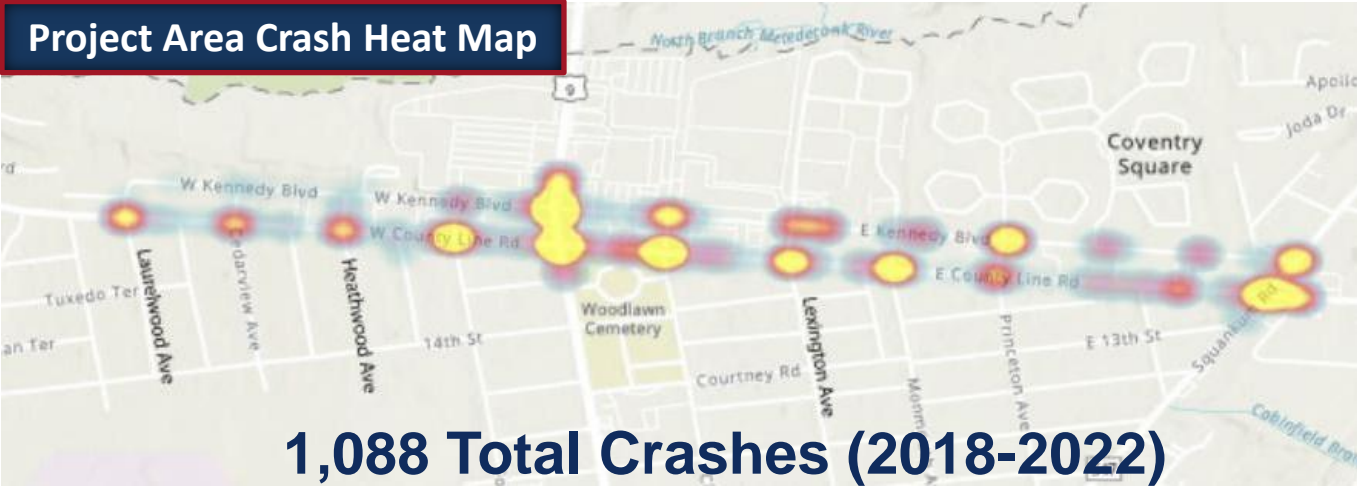
## Key Issues:

- Both roadways exceed capacity in 2025
- Incomplete sidewalk network
- Lack of continuous shoulders and bicycle facilities
- Lack of signal coordination
- Aggressive driving



# Existing Conditions / Key Issues - Safety and Traffic

## Project Area Crash Heat Map



## Crash Overrepresentations:

Crash Type	County Line Road	Kennedy Boulevard	County Road System
Right Angle	<b>31.1%</b>	<b>30.2%</b>	20.3%
Rear End	<b>31.9%</b>	22.4%	28.4%
Sideswipe	<b>14.9%</b>	<b>20.2%</b>	13.7%
Left Turn / U-Turn	<b>11.7%</b>	<b>14.9%</b>	3.3%
Pedestrian	0.7%	<b>2.7%</b>	1.5%
Bicyclist	0.9%	<b>1.7%</b>	1.1%

## Traffic Data:

- Data collection October 2023:
  - Turning movement counts
  - Automatic traffic recorders
  - Queue counts
  - Travel time runs
  - Origin-Destination data
- Analysis and calibration of model
  - Match existing conditions
  - Comparison for alternatives
- 2050 volume projections
  - Population and employment
  - Regional transportation model

# County Line Road Widening for 5 Lane Section



NJTPA

GPI

URBAN ENGINEERS

# Alternatives Overview

- **Alternative 1**
  - *Maintain existing traffic patterns and optimize signal timings*
- **Alternative 2**
  - *One-way conversion (County Line Rd EB & Kennedy Blvd WB) with buffered bike lanes*
- **Alternative 3 (Preliminary Preferred Alternative)**
  - *One-way conversion (County Line Rd EB & Kennedy Blvd WB) with paved side path*
- **Alternatives 2 or 3 - Option A (Preliminary Preferred Alternative)**
  - *Construct a hybrid modern roundabout at the Squankum Rd intersections*
- **Alternatives 2 or 3 - Option B**
  - *Widen and reconstruct the traffic signals at the Squankum Rd intersections*
- **No-Build** - *No proposed changes*



NJTPA

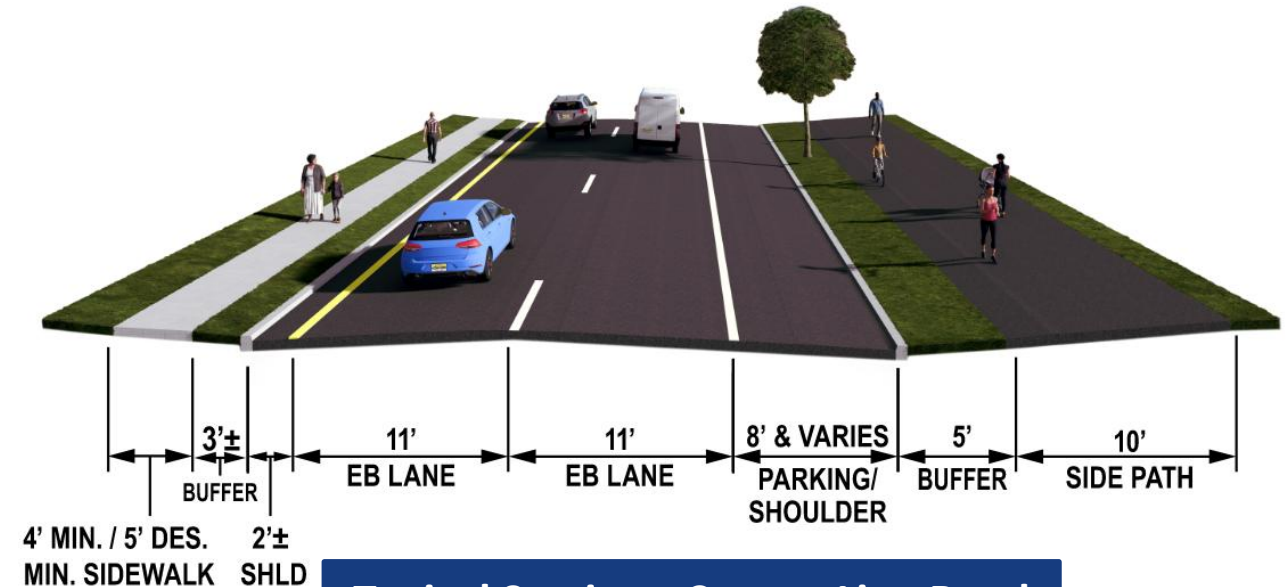
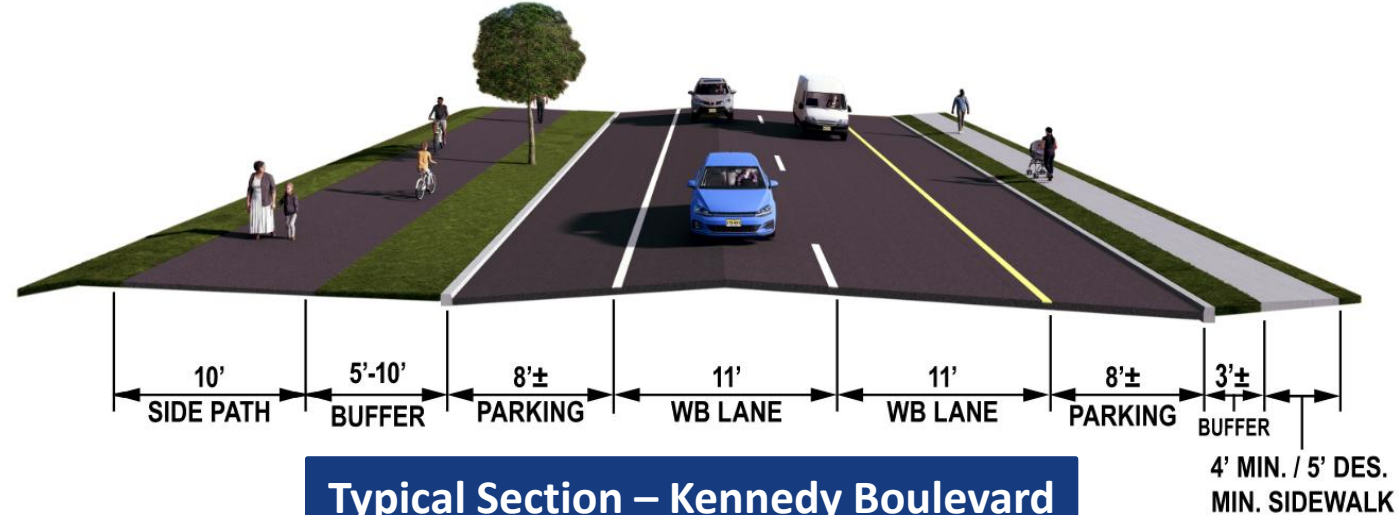
**GPI**

**URBAN**  
ENGINEERS

# Alternative 3 - One Way Conversion with Side Path (PPA)

## Key Features:

- Convert Kennedy Blvd to 1-way WB & County Line Rd to 1-way EB
- Side path for bicyclist and pedestrian use on both roads
- Improves traffic signal timings
- Sidewalk connectivity and ADA compliance



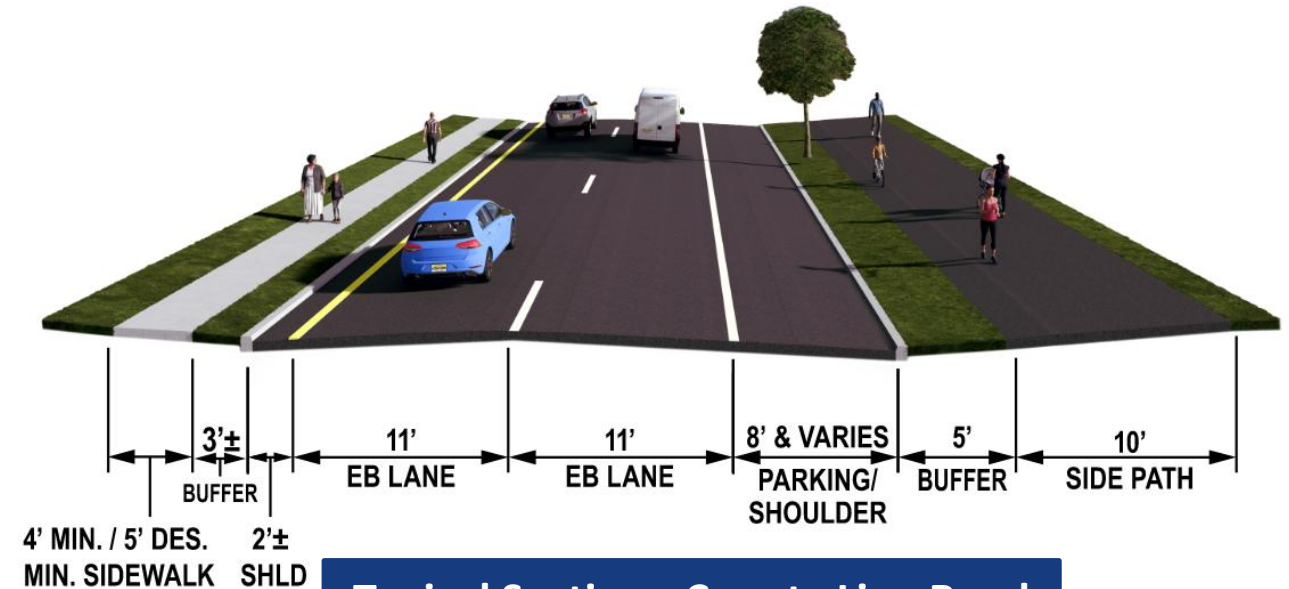
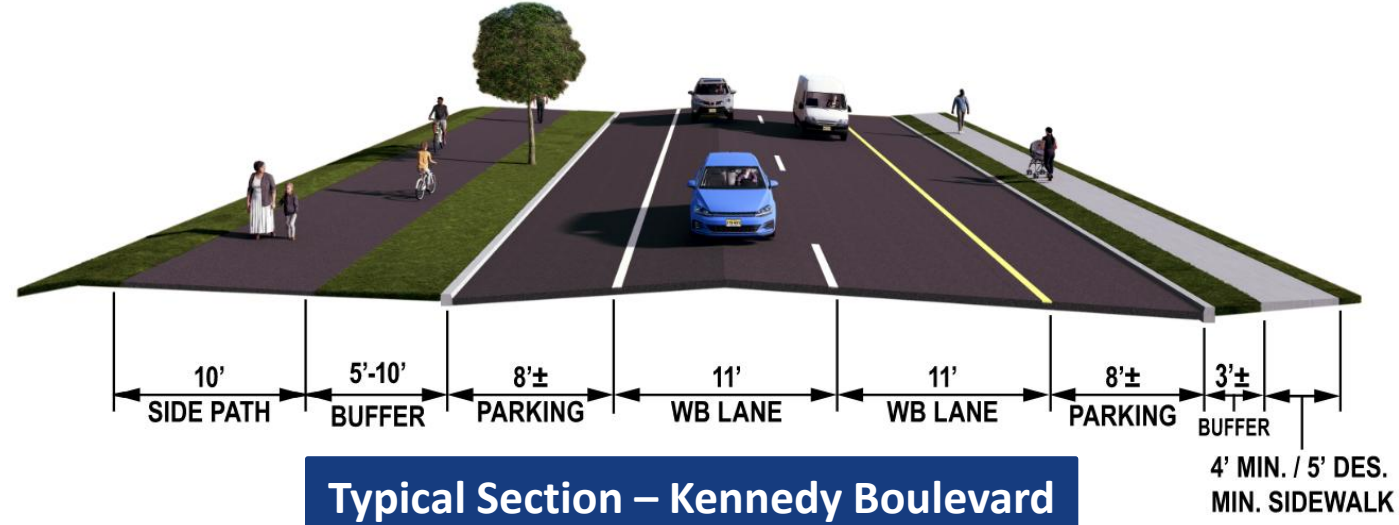
# Alternative 3 - One Way Conversion with Side Path (PPA)

## Pros:

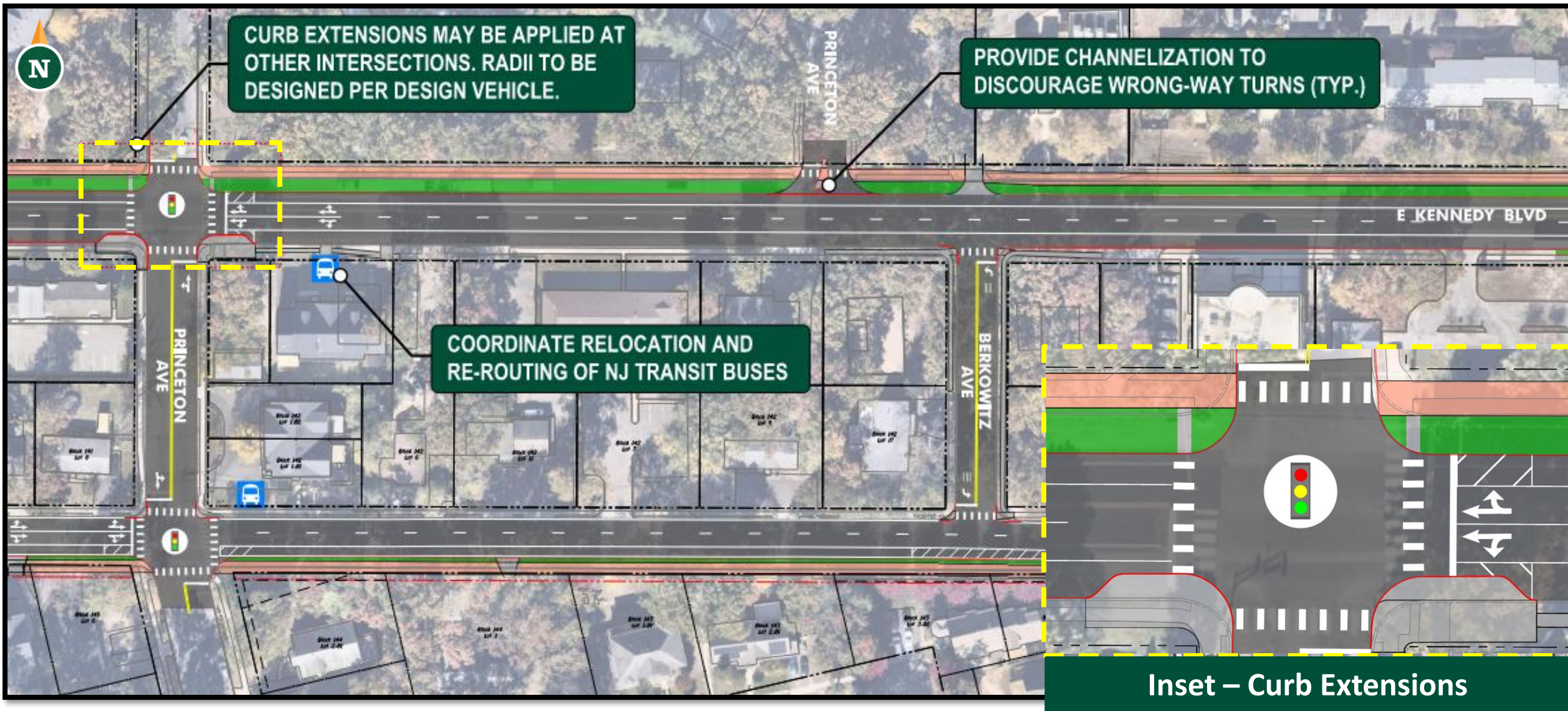
- Long term congestion improvements
- Full sidewalk and bike connectivity
- Enhanced pedestrian safety
- Net increase for parking (+/-240 spaces)

## Cons:

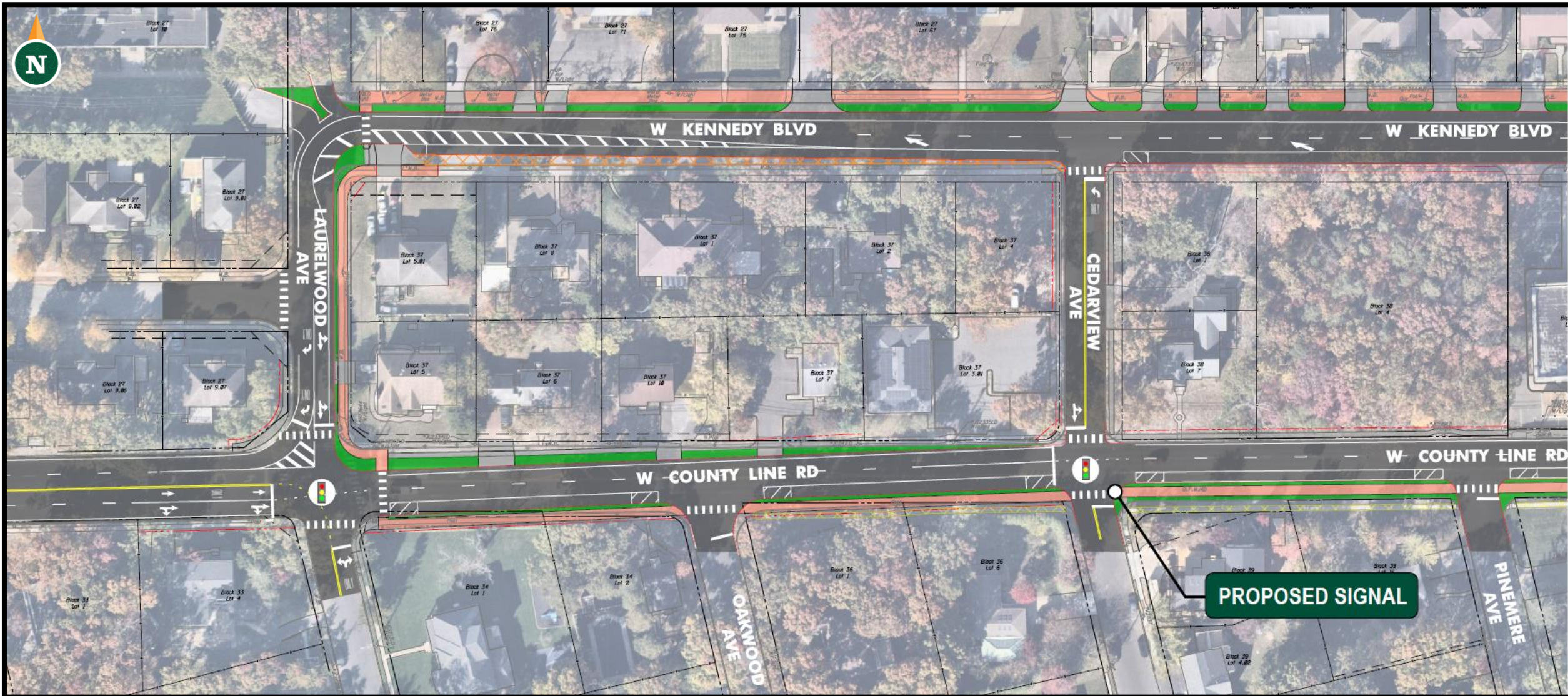
- Easements & ROW may be required
- Snow maintenance of side path



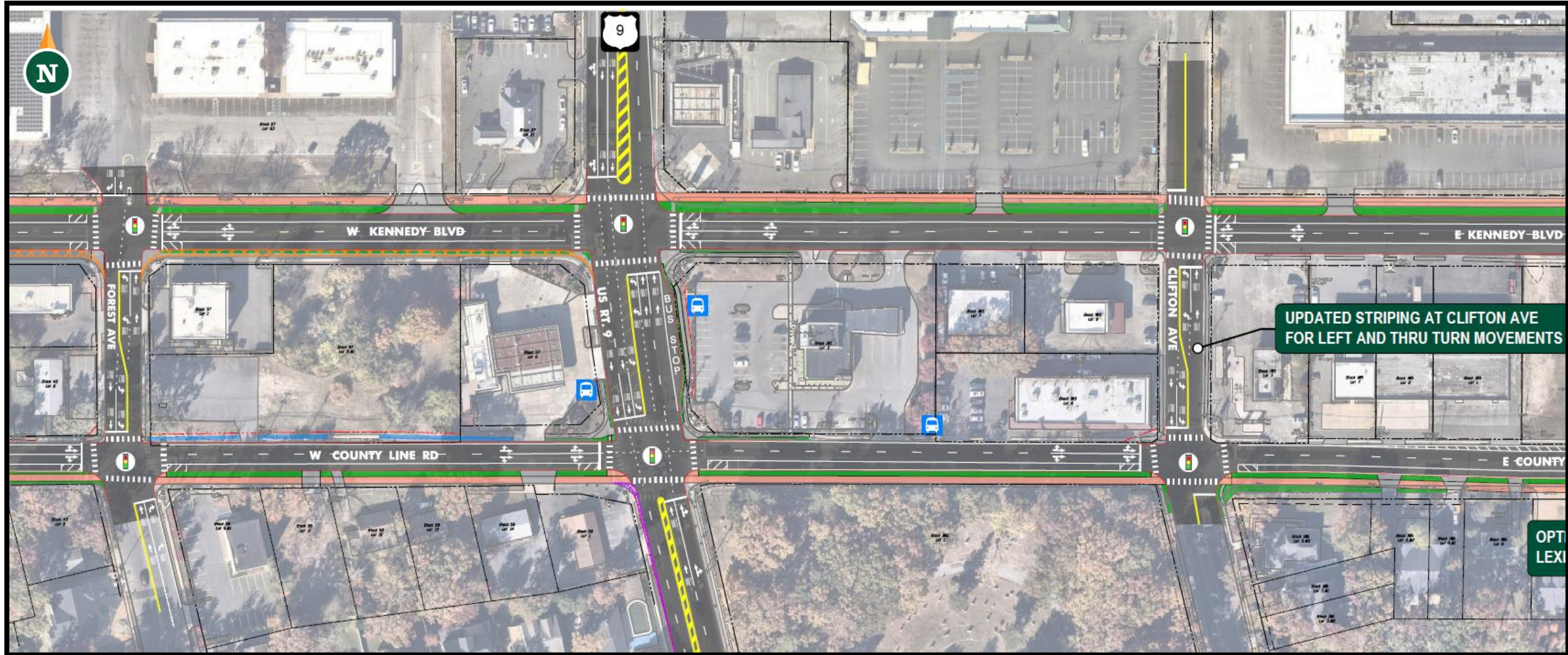
# Alternative 3 - One Way Conversion with Side Path (PPA)



# Alternatives - Laurelwood Avenue Improvements



# Alternatives - Route 9 Improvements



NJTPA

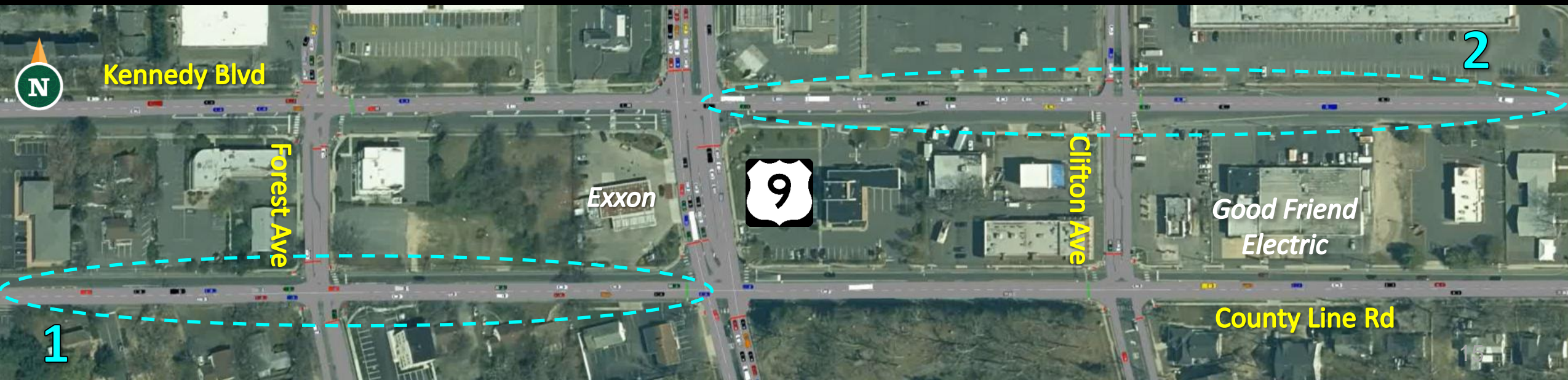
GPI

URBAN ENGINEERS

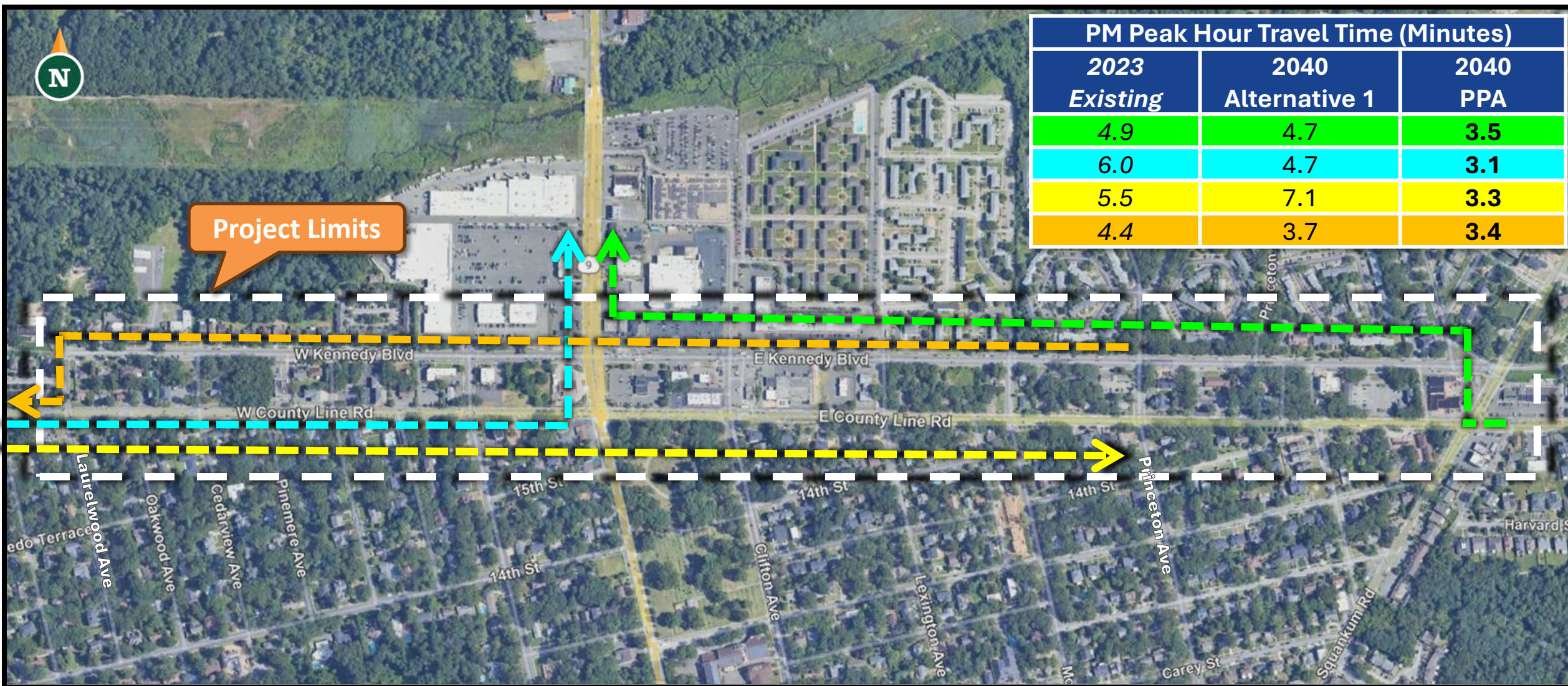
# 2040 - No Build



# 2040 Preliminary Preferred Alternative



# Travel Time Comparison - Existing, No-Build, & PPA



# Preliminary Preferred Alternative - Squankum Road Improvements

## Option A (PPA)

- *5-leg hybrid roundabout*

## Pros:

- *Roundabout enhances safety*
- *Operates at LOS D or better*

## Cons:

- *Requires two full ROW takings*

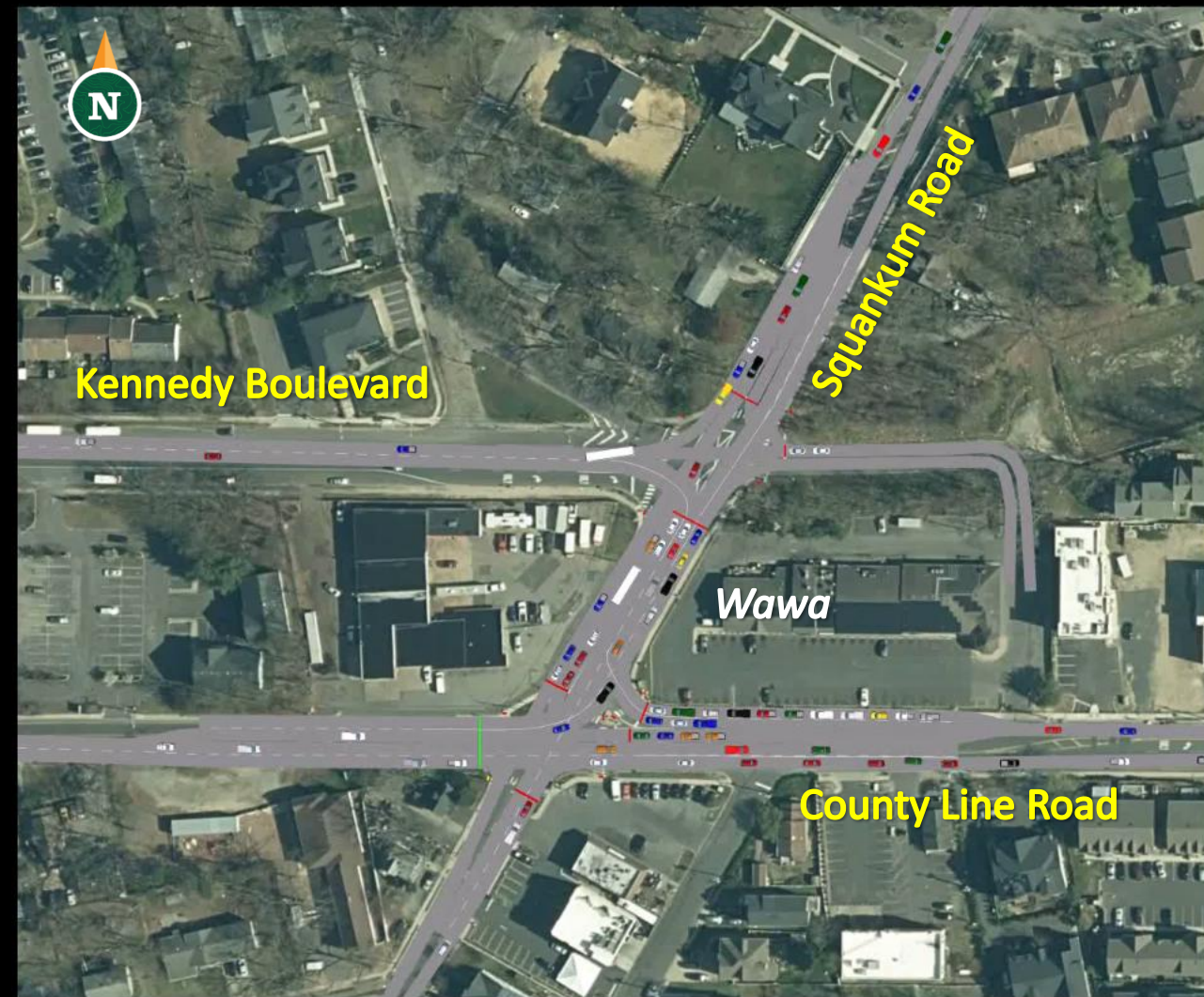


# 2050 Roundabout



Preliminary Preferred Alternative

# 2050 Traffic Signal



# Preliminary Preferred Alternative

## Impacts

Category	No-Build	Recommended Alternative
ROW	n/a	2 full, 4 partial, & 26 easements
Access	n/a	Yes
Utilities	None	Yes
SWM	n/a	Yes
Parking	+0	+240 spaces
Cost*	\$0	\$28.8M

\* Includes ROW

## Advantages

- ✓ **Addresses Purpose and Need**
- ✓ **Proven Safety Countermeasures**
- ✓ Addresses congestion for design year
- ✓ Reduces conflict points
- ✓ Complete streets
  - ✓ Pedestrians (complete sidewalks)
  - ✓ Transit (relocate bus stops)
  - ✓ Bicycle (side path)
- ✓ ADA compliant curb ramps / crosswalks



NJTPA

**GPI**

**URBAN ENGINEERS**

# Public Outreach Summary



## LOCAL OFFICIAL MEETINGS

- ❖ July 9, 2024
- ❖ March 21, 2025



## STAKEHOLDER MEETINGS

- ❖ July 24, 2025
- ❖ April 21, 2025



## PUBLIC INFORMATION CENTERS

- ❖ August 8, 2024
- ❖ May 7, 2025



## PROJECT WEBSITE

[countylineandkennedy.com](http://countylineandkennedy.com)



## NJDOT SME REVIEW

- ❖ June 2025



## RESOLUTIONS OF SUPPORT

- ❖ Lakewood Township
- ❖ Ocean County

# Public Outreach Methods

## PROJECT WEBSITE

OCEAN COUNTY  
KENNEDY BOULEVARD (CR6)  
AND COUNTY LINE ROAD (CR526)  
CORRIDOR IMPROVEMENTS

HOME ABOUT THE STUDY COMMUNITY OUTREACH RESOURCES FAQs COMMUNITY INPUT SURVEY CONTACT US

**PUBLIC INFORMATION CENTER MEETING NOTICE**  
[View PIC Page](#)

**WELCOME**

Welcome to the project website of the Local Concept Development (LCD) Study for the Kennedy Boulevard (CR 6) and County Line Road (CR 526) corridor improvements project in Lakewood Township, Ocean County.

Ocean County in partnership with the North Jersey Transportation Planning Authority (NJTPA) is conducting this study to investigate options for improving congestion and safety along Kennedy Boulevard and County Line Road from Laurelwood Avenue to Squankum Road in Lakewood Township.

This study is federally funded through the NJTPA working in cooperation with the New Jersey Department of Transportation (NJDOT) and the Federal Highway Administration (FHWA).

The LCD Study is the first phase of the project development process. This phase includes the following: evaluate existing

## COMMUNITY INPUT SURVEY

NJTPA Kennedy Boulevard (CR 6) & County Line Road (CR 526) Corridor Improvements  
Lakewood Township, Ocean County, NJ

To: Individuals and organizations with interest in the Kennedy Boulevard and County Line Road project area.  
From: Ocean County Engineering Department

**COMMUNITY INPUT SURVEY**

Ocean County is extending an invitation to you to represent your interests and participate in the Local Concept Development (LCD) Study for the Kennedy Boulevard (CR 6) & County Line Road Corridor Improvements by completing this **community input survey**. This study will explore ways to improve safety and traffic flow for drivers, pedestrians and cyclists. For more information on this project please visit [www.countylineandkennedy.com](http://www.countylineandkennedy.com).

The LCD Study is the first of four phases in the federally funded project delivery process for transportation improvements, as required by the Federal Highway Administration (FHWA). This phase will provide the required information to determine whether the project can successfully be advanced to the Local Preliminary Engineering (LPE), Final Design (FD) and Construction phases.

Public involvement will continue through every phase of the project, but your participation in this early phase provides valuable input for the Purpose and Need Statement and the development of alternatives for proposed improvements. As a resident and/or business owner of the area, you have been identified as a potential Project Stakeholder. This survey is an opportunity to express your interest in becoming a stakeholder for this study and provide any information you wish to share with the Project Team. In addition to this survey, the Project Team will hold an initial Community Stakeholders Meeting in late Spring 2024 followed by a Public Information Center (PIC).

Please return your completed survey by April 26, 2024 via email to [Countylineandkennedy@gmail.com](mailto:Countylineandkennedy@gmail.com), or mail hard copies to Sophia Fox, Stokes Creative Group, Inc., 1666 Route 206, Vincentown, NJ 08088

**NOTE: to take this survey online, or translate it into other languages, please visit: [www.bit.ly/countylineandkennedy](http://www.bit.ly/countylineandkennedy)**

**YOUR CONTACT INFORMATION (Please print clearly)**

Full Name: \_\_\_\_\_  
Mailing Address: \_\_\_\_\_  
Phone: (Home/Cell) \_\_\_\_\_  
Email Address: \_\_\_\_\_

1. Are you a Lakewood Township resident or business owner? (check all that apply)  
 Resident  Both  
 Local business owner  Other (please explain) \_\_\_\_\_

2. Which mode of transportation do you use most often on Kennedy Boulevard and County Line Road?  
 Car  Walk  Bicycle  Other (please explain) \_\_\_\_\_

# Public Outreach Methods

## FIELD WALK MEETING

### Participants:

- NJTPA
- NJDOT
- Ocean County
- Lakewood Township
- GPI & Urban

### Purpose:

- Experience the project corridor from the perspective of a typical road user.
- Gather input from wide range of backgrounds and perspectives.
- Identify potential issues and opportunities for improvement.



# Public Outreach Methods

## PUBLIC INFORMATION CENTER

### Advertisement

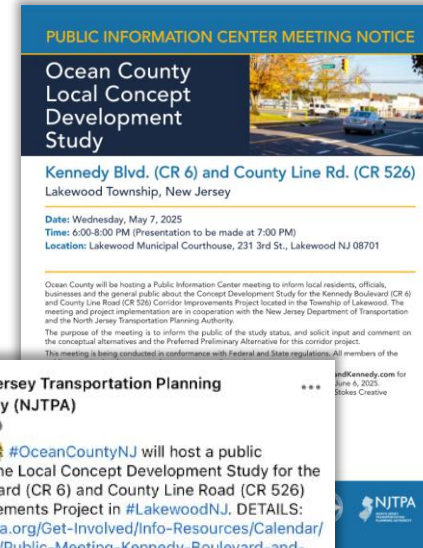
- Mailers & handouts
- Yard Signs
- Newspapers
- Email blasts
- Social media

### In-Person Open House Format

- Review project plans up close
- Converse 1-on-1 with Project Team
- Display simulation videos on loop

### Formal Presentation

- Explain background, purpose, & need
- Project funding & timeline



**PUBLIC INFORMATION CENTER MEETING NOTICE**

**Ocean County Local Concept Development Study**

Kennedy Blvd. (CR 6) and County Line Rd. (CR 526)  
Lakewood Township, New Jersey

Date: Wednesday, May 7, 2025  
Time: 6:00-8:00 PM (Presentation to be made at 7:00 PM)  
Location: Lakewood Municipal Courthouse, 231 3rd St., Lakewood NJ 08701

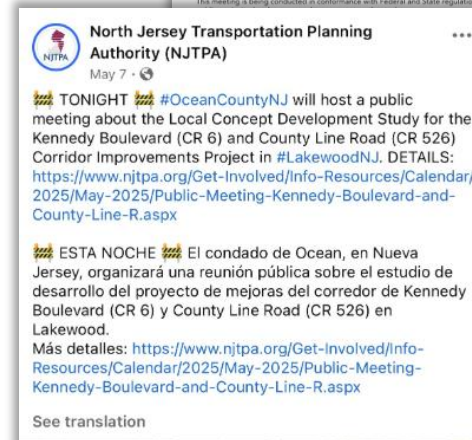
Ocean County will be hosting a Public Information Center meeting to inform local residents, officials, businesses and the general public about the Concept Development Study for the Kennedy Boulevard (CR 6) and County Line Road (CR 526) Corridor Improvements Project located in the Township of Lakewood. The meeting and project implementation are in cooperation with the New Jersey Department of Transportation and the North Jersey Transportation Planning Authority.

The purpose of the meeting is to inform the public of the study status, and solicit input and comment on the conceptual alternatives and the Preferred Preliminary Alternative for this corridor project.

This meeting is being conducted in conformance with Federal and State regulations. All members of the public are invited to attend.

For more information, visit [www.njtpa.org](https://www.njtpa.org) or call 856-981-1100.

Prepared by: [www.Kennedy.com](http://www.Kennedy.com) for June 6, 2025. © 2025. All rights reserved. [www.Kennedy.com](http://www.Kennedy.com)



**North Jersey Transportation Planning Authority (NJTPA)**  
May 7

🔊 TONIGHT 🔊 #OceanCountyNJ will host a public meeting about the Local Concept Development Study for the Kennedy Boulevard (CR 6) and County Line Road (CR 526) Corridor Improvements Project in #LakewoodNJ. DETAILS: <https://www.njtpa.org/Get-Involved/Info-Resources/Calendar/2025/May-2025/Public-Meeting-Kennedy-Boulevard-and-County-Line-R.aspx>

🔊 ESTA NOCHE 🔊 El condado de Ocean, en Nueva Jersey, organizará una reunión pública sobre el estudio de desarrollo del proyecto de mejoras del corredor de Kennedy Boulevard (CR 6) y County Line Road (CR 526) en Lakewood. Más detalles: <https://www.njtpa.org/Get-Involved/Info-Resources/Calendar/2025/May-2025/Public-Meeting-Kennedy-Boulevard-and-County-Line-R.aspx>

See translation



# Public Input Incorporation

## Public Input & Concerns:

Traffic congestion, gridlock, and lack of signal coordination

Lack of turning lanes at intersections

Safety concerns at intersections along 4-lane section of County Line Road

Incomplete sidewalk network

Obstructed corner sight triangles



## Project Team Solutions:

### One way conversion of PPA:

- Addresses long term traffic needs
- Coordinates State & County signals
- Eliminates opposing traffic & need for additional turning lanes

County-implemented interim improvements at Laurelwood Ave and Cedarview Ave until PPA proceeds to construction

PPA proposes full sidewalk network & side path

One way conversion, shoulders, full sidewalk network, and side path all contribute to improving intersection sight distance

# Thank you!

## Ocean County Board of Trustees

July 14, 2025



Engineering | Design | Planning | Construction Management

