

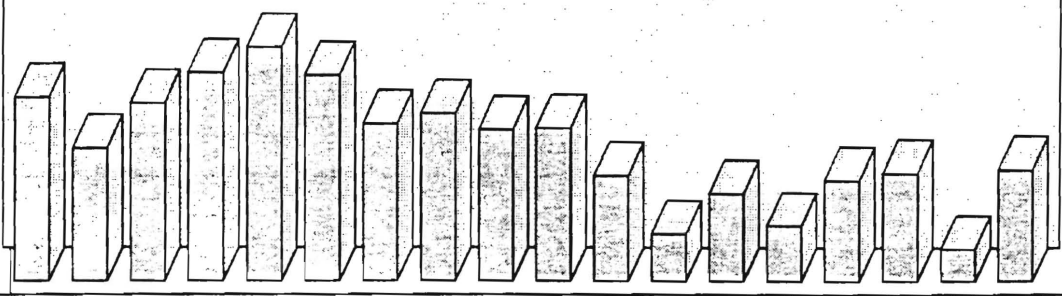
974.905
044.4
c. 2

*State of New Jersey
Department of Human Services
Division of Family Development*

CURRENT PROGRAM STATISTICS

May 1995

Karen Highsmith, Acting Director



State of New Jersey
 Department of Human Services
 Division of Family Development

CURRENT PROGRAM STATISTICS
 May 1995

TABLE OF CONTENTS

	Page
Highlights of Current Program Statistics	1-3
 Statistics by County, 1995	
Table 1 AFDC.....	4
Graph 1 Current AFDC Families	5
Table 2 Food Stamp Program.....	6
Graph 2 Current Food Stamp Households/Persons	7
Table 3 Emergency Assistance Program	8
Graph 3 Current Families Receiving Emergency Assistance	9
Table 4 Family Development Program	10
 State Summary, 1993 - 1995	
Table 5 AFDC, May 1993 - May 1995	11
Graph 4 Families Receiving AFDC, 5/93-5/95	12
Table 6 Food Stamp Program, May 1993 - May 1995	13
Graph 5 Food Stamp Households, 5/93-5/95	14
Graph 6 Food Stamp Recipients, 5/93-5/95	15
Table 7 Emergency Assistance Program, May 1993 - May 1995	16
Graph 7 AFDC Families Receiving Emergency Assistance 5/93-5/95	17
Table 8 JOBS/FDP Participation Rates, by County and Statewide, October 1993 - May 1995	18
Graph 8 JOBS/FDP Participation Rates, 10/93-5/95	19
Table 9 General Assistance, January 1993 -December 1994	20
Graph 9 General Assistance Recipients 1/93 - 12/94	21
Table 10 Child Support and Paternity 1993-1995	22
Explanatory Notes	23-24
 Supplement	
Table 11 General Assistance Recipients by County and Municipality, December 1994	25

Highlights of Current Program Statistics

AFDC (Tables 1 and 5, Graphs 1 and 4)

120,813 eligible families in New Jersey were receiving AFDC as of the end of May 1995.

108,300 were single head of household families (Regular AFDC, C segment).

Among two-parent families, Unemployed Parents (F Segment) accounted for 3800, and State AFDC (N Segment) for almost 3400. There were more than 5300 Medicaid Only families.

By county, the largest numbers were in Essex with 30,100 families, Hudson with 19,000, and Camden County with 13,700. They accounted for 52 percent of all AFDC families.

The other counties ranged from 202 families in Hunterdon to 7,800 in Passaic County.

The number of eligible families in May 1995 is 500 less than April, and continues the decline since the May/June 1994 peak of over 124,600, which was interrupted only in April 1995.

Regular AFDC (C segment) was also down by about 500 from April to May 1995. From the peak of nearly 111,800 in June 1994, it has declined by about 3500 through May 1995.

F segment families declined from over 4500 in May 1994 to less than 3800 by December 1994. After remaining around 3900 in the first four months of 1995, it again dropped to less than 3800 in May.

State AFDC (N segment) grew steadily from about 3000 families in May 1993 to almost 3500 by May 1994, but has remained almost unchanged since.

Medicaid Only families remained near 5000 over the last two years, but increased by about 500 from 4,834 in April 1994 to 5,328 by May 1995.

FOOD STAMP PROGRAM (Tables 2 and 6, Graphs 2, 5, and 6)

At the end of May 1995, 222,296 households were participating in the Food Stamp Program.

About 113,000 were AFDC households and 109,000 were Other Low Income households.

48 percent of all Food Stamp Households are in Essex (55,221), Hudson (29,638) and Camden (21,783) Counties.

These households included about 522,000 persons, 247,000 adults and 275,000 children.

In seven counties (Bergen, Hunterdon, Monmouth, Morris, Somerset, Sussex, and Warren) the number of adults exceeds the number of children in Food Stamp households.

Food Stamp households in New Jersey remained close to 215,000 families between May 1993 and February 1994, jumped to over 220,000 families in March 1994, and remained above that amount every month since. The May 1995 level was about 2000 below the March 1995 peak of almost 225,000, and about the same as April.

The long-term convergence of the numbers of AFDC(FS) households and Other Low Income households continues. There were actually fewer AFDC(FS) households in May 1995 than in May 1993 (slightly over 113,000), while the average number of Other Low Income households was 100,000 for all of 1993 and nearly 109,000 for the first five months of 1995.

Following the decline of 5000 Total Recipients between March and April of 1995, there was another drop of almost 2000 between April and May, together cancelling out the increase from January to March. The average for the first five months of 1995, about 524,500, is about 9,000 higher than the 1993 average.

Recipient Adults increased much more than Recipient Children, averaging under 239,000 for 1993 and more than 247,000 for the first five months of 1995. Recipient Children averaged 277,000 in 1993, increased to 279,000 in 1994, and returned to 277,000 for the first five months of 1995.

EMERGENCY ASSISTANCE (Tables 3 and 7, Graphs 3 and 7)

At the end of May 1995 6853 eligible AFDC families were receiving Emergency Assistance (EA) in New Jersey.

3371 families were receiving Temporary Rental Assistance (TRA).

There were 526 motel placements and 433 emergency shelter placements.

All other AFDC-EA accounted for 2523 families, including either one-time benefits such as back rent, back utilities, security deposits, furnishings, and clothing and food allowance, or shared or transitional housing.

2422 families in Essex County received EA, including 1855 provided TRA. Mercer had 795 EA recipient families, Middlesex had 687, and Passaic had 645 (mostly "Other EA"). All other counties had between 13 and 433 EA recipient families with eight under 100.

The number of AFDC families receiving Emergency Assistance has generally continued to decline since May 1993 when there were almost 8500 such families, with some fluctuations due to short-term changes in "Other AFDC-EA." The average for 1993 was almost 7900, under 7300 for 1994, and about 6800 for the first four months of 1995.

The decline in the number of families receiving Temporary Rental Assistance accounted for much of the decline in EA. At almost 4900 in May 1993, families receiving TRA declined to less than 3500 by May 1995, the lowest level in the period.

Motel placements were around 700 during most of 1993, and around 600 in late 1993 and the first half of 1994. From a peak of 749 in August 1994, motel placements dropped to only 540 by May 1995, also the lowest in the period.

Emergency shelter placements peaked at 573 in October 1993, and remained under 500 since, with some months around 400.

All Other AFDC-EA, which had fluctuated between a high of 2498 in May 1993 and a low of 1713 in December 1994, reached a two year high of 2523 in May 1995.

JOBS/FDP PARTICIPATION RATES (Table 8, Graph 8)

Statewide participation in JOBS/FDP reached a new high in May 1995 of 25.7 percent, increasing 1.2 percent over March. The early 1995 pattern was similar to early 1994, with a drop of about 1 percent from December to January, little change from January to February and substantial increases through May. An upward shift can be seen in the statewide rate since October 1993.

Most counties have shown gradual upward movement, though participation rates vary widely and some fluctuate markedly. Several experienced declines in Winter 1993/1994, moved up in March 1994, declined from May through August 1994, then turned upward in September and October 1994. Rates remained fairly stable through December 1994, and declined in January 1995. Most have increased strongly from January through May 1995.

Participation rates for all counties exceeded 10 percent in May 1995, while Essex county's rate doubled between January and May of 1995, reaching a high of 15.7 percent. Only three other counties, Camden, Cape May, and Middlesex, were under 20 percent, while the rest had rates of 25 percent or more. Cumberland and Somerset exceeded 60 percent, and Atlantic, Morris, Salem, and Warren were between 40 and 50 percent in May 1995.

GENERAL ASSISTANCE (Table 9, Graph 9)

For the period January 1993 through December 1994 (the latest available information), the number of GA recipients peaked at about 37,400 in March 1993 and at 38,100 in March 1994. The level remained around 35,000 from September through December 1994. (October and November were revised upward.)

The number of employable recipients also peaked in March 1993 (25,900) and March 1994 (26,400). The level remained slightly over 23,000 from September through December 1994.

Unemployable GA recipients remained between 11,000 and 11,700 from January 1993 through April 1994, and hovered around 12,000 from May through November 1994. In December, Unemployables declined to less than 11,700 again.

CHILD SUPPORT AND PATERNITY COLLECTIONS (Table 10)

Total collections of the Child Support and Paternity Program grew from about \$438 million to more than \$510 million from FY1993 to FY1994, an increase of 16.6 percent. Total AFDC/Foster Care collections remained almost unchanged at around \$92 million. Non-AFDC collections grew from less than \$346 million to almost \$418 million, or 21 percent.

For the nine months ended March 1995 (three quarters of FY1995), AFDC/Foster Care Collections were up by one percent from a year earlier, led by a 1.7 million dollar increase in income withholdings and about 1.5 million in collections for other states. Non-AFDC collections were up 14 percent, or about \$44 million more. Most of the increase was in Income Withholding, Other/Own Behalf, and For Other States.

New Jersey Department of Human Services
Division of Family Development

TABLE 1

AFDC Program

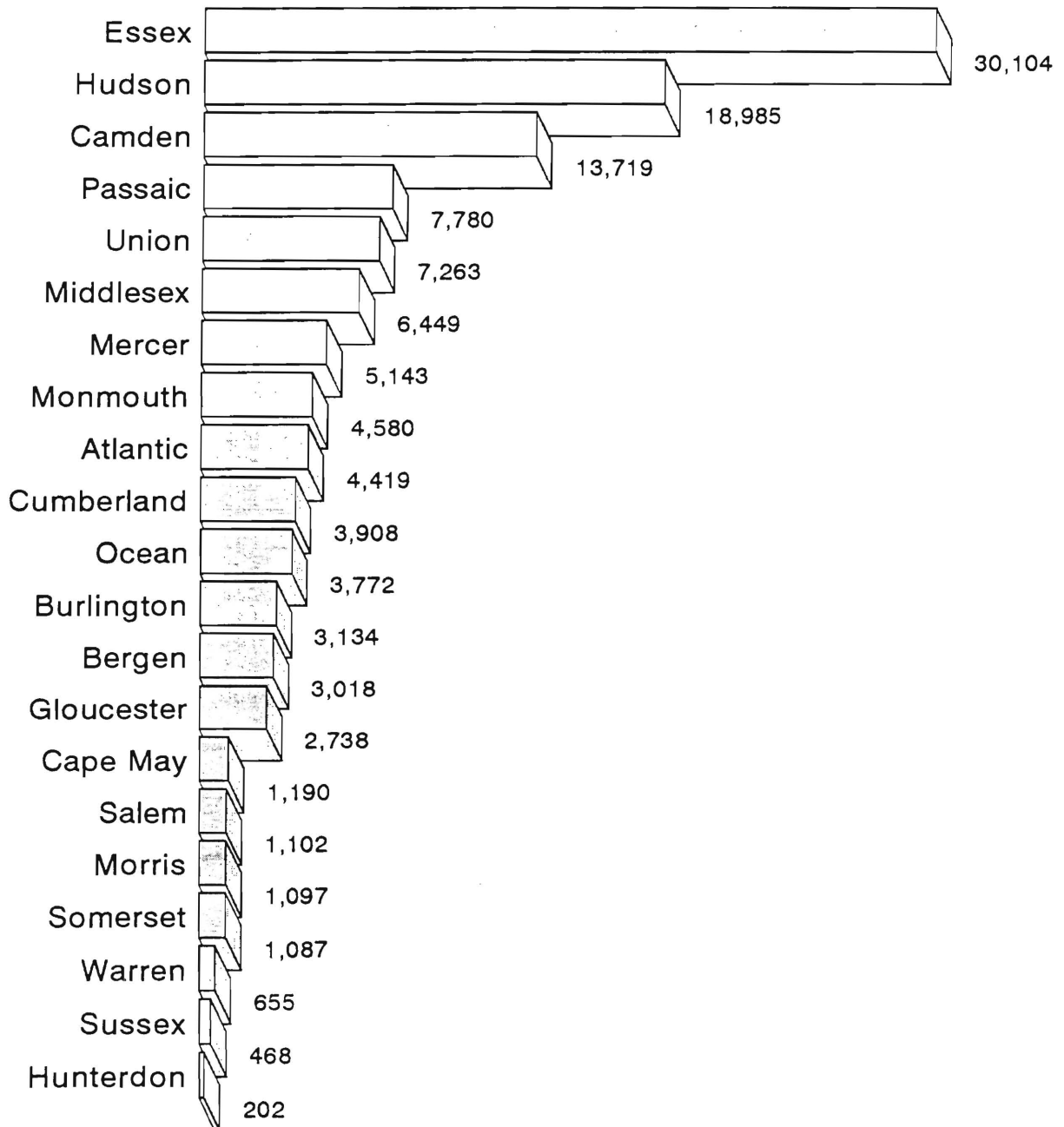
NUMBER OF APPLICATIONS AND TERMINATIONS DURING REPORT MONTH,
AND NUMBER OF ELIGIBLE FAMILIES RECEIVING AFDC AT END OF REPORT MONTH

May 1995

County	Applications Approved	Terminations	Regular AFDC (C Segment)	Unemployed Parents (F)	State AFDC (N)	Medicaid Only	TOTAL AFDC
Atlantic	319	292	4,024	162	87	146	4,419
Bergen	135	140	2,643	180	119	76	3,018
Burlington	216	224	2,717	98	92	227	3,134
Camden	683	708	11,953	622	385	759	13,719
Cape May	51	77	971	90	72	57	1,190
Cumberland	226	249	3,293	186	203	226	3,908
Essex	819	1,060	28,552	541	261	750	30,104
Gloucester	207	211	2,329	130	97	182	2,738
Hudson	543	547	16,985	375	622	1,003	18,985
Hunterdon	13	21	162	8	12	20	202
Mercer	387	404	4,648	92	101	302	5,143
Middlesex	342	316	5,332	258	314	545	6,449
Monmouth	199	263	4,216	104	186	74	4,580
Morris	55	57	961	49	38	49	1,097
Ocean	165	218	3,145	220	188	219	3,772
Passaic	345	373	7,111	338	269	62	7,780
Salem	86	90	967	30	27	78	1,102
Somerset	95	116	879	48	32	128	1,087
Sussex	32	48	375	24	13	56	468
Union	319	335	6,543	177	220	323	7,263
Warren	51	35	537	41	31	46	655
NJ TOTAL	5,288	5,784	108,343	3,773	3,369	5,328	120,813

Data Sources: Data is derived from NJ Division of Family Development's FAMIS report # FF-012.

Current AFDC Families May 1995, By County



New Jersey Department of Human Services
Division of Family Development

TABLE 2

FOOD STAMP Program

NUMBER OF ATP'S ISSUED TO HOUSEHOLDS,
PERSONS, ADULTS AND CHILDREN AT THE END OF THE REPORT MONTH

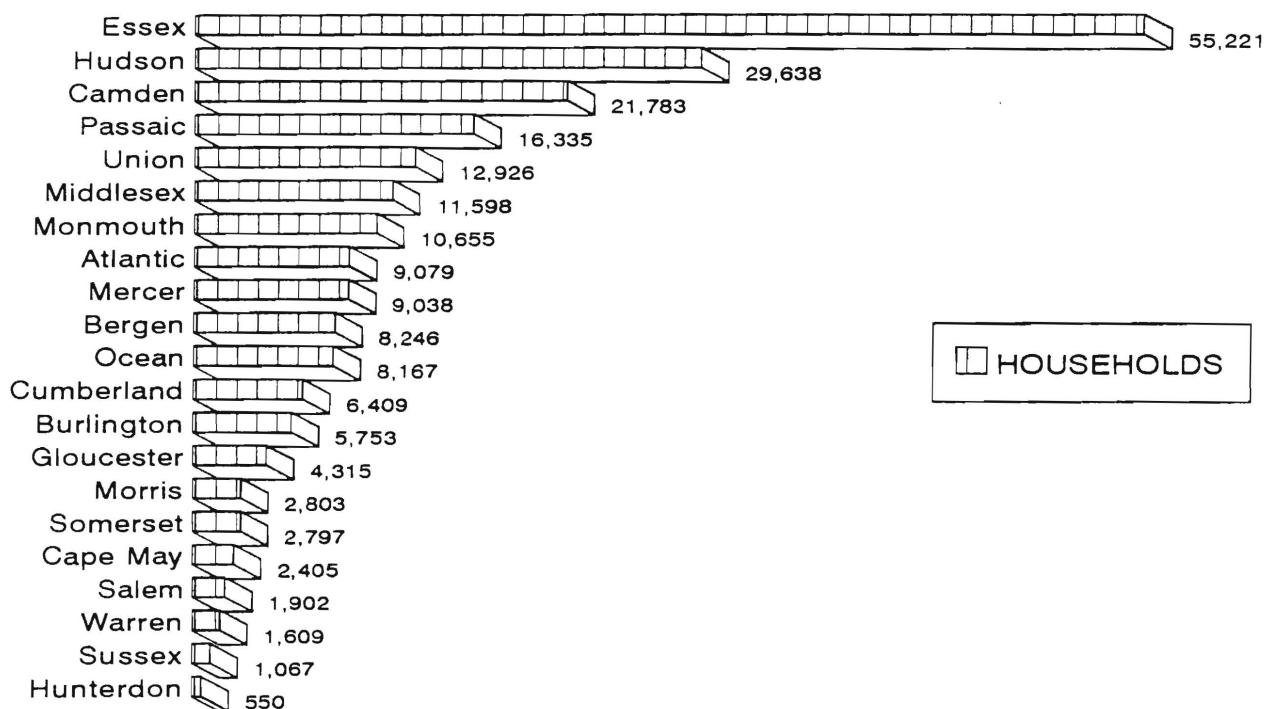
May 1995

County	HOUSEHOLDS			PERSONS				
	AFDC	Other low income	TOTAL	TOTAL	AFDC	Other low income	Adults	Children
Atlantic	4,234	4,845	9,079	20,307	13,554	6,753	9,882	10,425
Bergen	2,739	5,507	8,246	16,547	8,129	8,418	9,589	6,958
Burlington	2,738	3,015	5,753	13,299	8,325	4,974	6,490	6,809
Camden	12,998	8,785	21,783	55,314	42,529	12,785	24,625	30,689
Cape May	1,140	1,265	2,405	6,116	3,861	2,255	2,925	3,191
Cumberland	3,765	2,644	6,409	16,889	12,650	4,239	7,678	9,211
Essex	29,717	25,504	55,221	128,864	92,052	36,812	59,271	69,593
Gloucester	2,410	1,905	4,315	10,757	7,523	3,234	5,009	5,748
Hudson	17,629	12,009	29,638	72,085	53,893	18,192	32,172	39,913
Hunterdon	176	374	550	1,108	543	565	632	476
Mercer	4,613	4,425	9,038	19,872	14,162	5,710	9,414	10,458
Middlesex	5,779	5,819	11,598	26,311	17,246	9,065	12,985	13,326
Monmouth	4,262	6,393	10,655	23,231	13,397	9,834	11,939	11,292
Morris	908	1,895	2,803	5,687	2,683	3,004	3,248	2,439
Ocean	3,612	4,555	8,167	20,481	11,773	8,708	9,690	10,791
Passaic	7,232	9,103	16,335	38,928	23,923	15,005	18,453	20,475
Salem	1,007	895	1,902	4,676	3,236	1,440	2,176	2,500
Somerset	1,009	1,788	2,797	5,447	2,866	2,581	3,016	2,431
Sussex	383	684	1,067	2,516	1,195	1,321	1,316	1,200
Union	6,172	6,754	12,926	29,954	19,653	10,301	14,487	15,467
Warren	602	1,007	1,609	3,784	1,906	1,878	1,952	1,832
NJ TOTAL	113,125	109,171	222,296	522,173	355,099	167,074	246,949	275,224

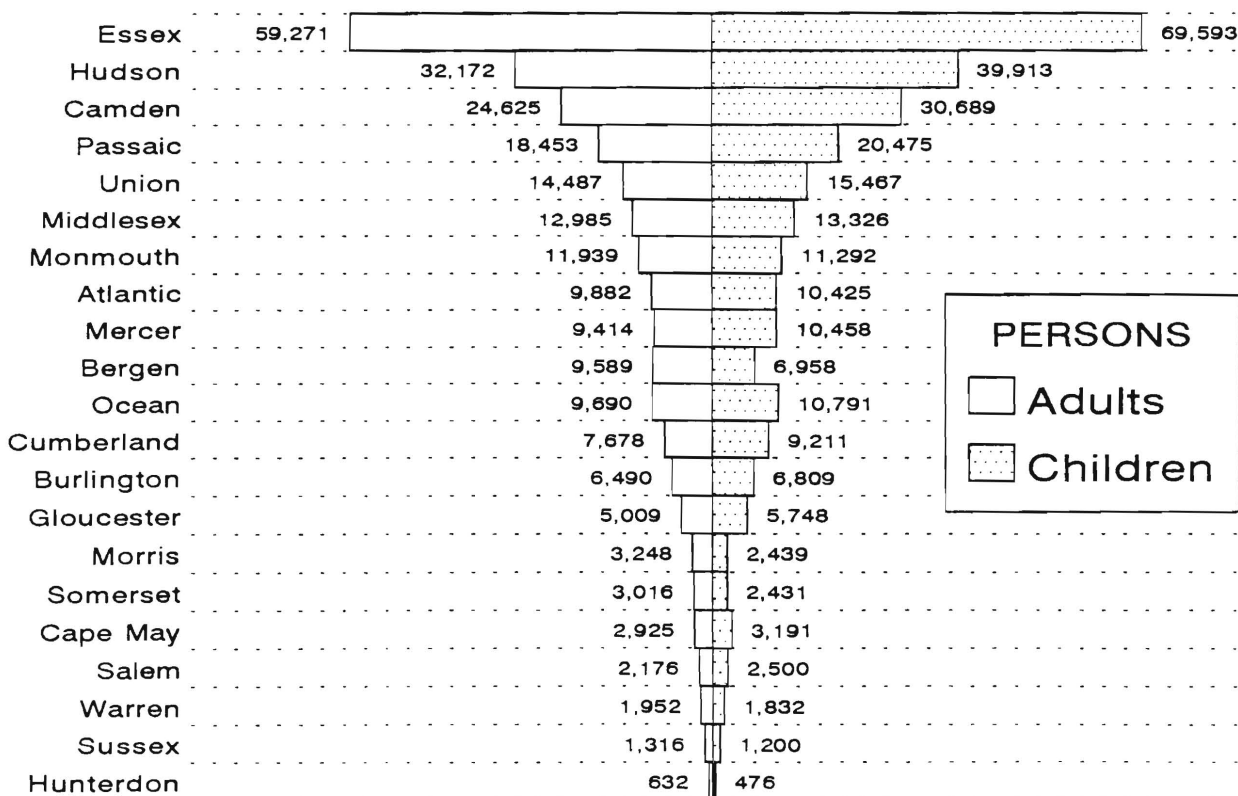
ATP - Authorization to Participate, may include some duplication

Data Sources: Data is derived from NJ Division of Family Development's FAMIS report # FB-160.

Food Stamp Households May 1995, By County



HOUSEHOLDS



PERSONS
Adults
Children

New Jersey Department of Human Services
Division of Family Development

TABLE 3**EMERGENCY ASSISTANCE Program for AFDC recipients**

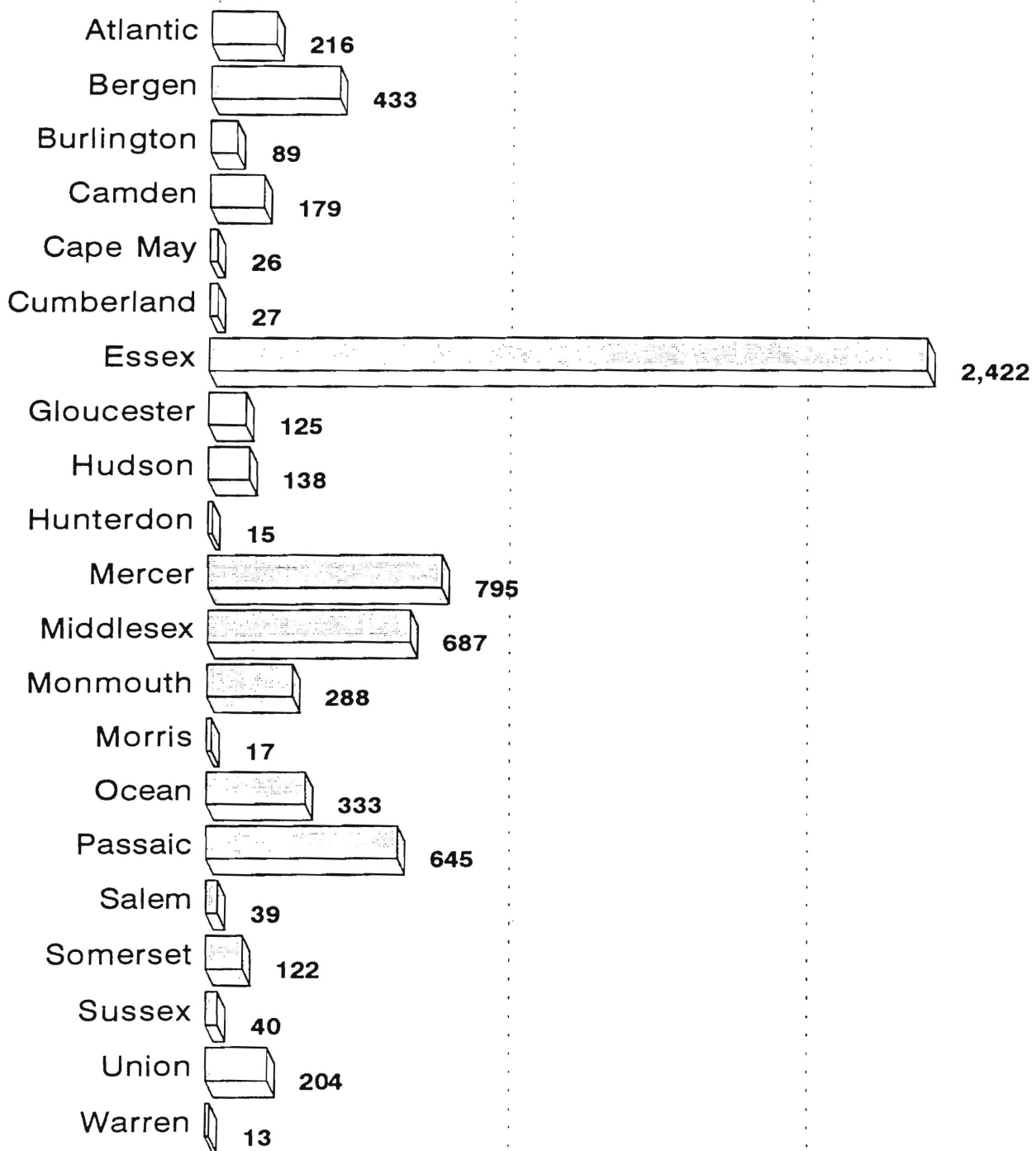
NUMBER OF APPLICATIONS AND TERMINATIONS DURING REPORT MONTH,
AND ELIGIBLE FAMILIES RECEIVING EMERGENCY ASSISTANCE
AT END OF REPORT MONTH

May 1995

County	Applications Approved	Terminations	Total families receiving EA	Temporary rental assist.	Motel Housing	Emergency Shelter	Other AFDC-EA
Atlantic	157	356	216	75	32	31	78
Bergen	75	76	433	331	37	27	38
Burlington	46	28	89	14	3	48	24
Camden	218	237	179	59	2	30	88
Cape May	17	13	26	7	7	0	12
Cumberland	22	13	27	2	2	15	8
Essex	421	61	2,422	1,855	87	96	384
Gloucester	19	17	125	69	10	42	4
Hudson	37	50	138	39	7	16	76
Hunterdon	0	2	15	10	1	3	1
Mercer	115	118	795	106	42	3	644
Middlesex	71	220	687	385	23	18	261
Monmouth	65	88	288	141	54	1	92
Morris	17	12	17	0	4	11	2
Ocean	84	118	333	193	139	1	0
Passaic	708	520	645	4	13	27	601
Salem	36	17	39	17	15	0	7
Somerset	62	47	122	24	14	16	68
Sussex	15	9	40	8	15	12	5
Union	309	241	204	32	12	31	129
Warren	10	5	13	0	7	5	1
NJ TOTAL	2,504	2,248	6,853	3,371	526	433	2,523

Data Sources: Data is compiled by County Welfare Agencies & reported to the
NJ Division of Family Development on report form # PA-217.

Current Families Receiving Emergency Assistance May 1995, By County



NEW JERSEY DEPARTMENT OF HUMAN SERVICES
DIVISION OF FAMILY DEVELOPMENT

TABLE 4
FAMILY DEVELOPMENT PROGRAM
STATISTICAL SUMMARY

COUNTY	SNAPSHOT OF ACTIVITY AS OF MAY 1995				ACTIVITY FOR MONTH OF MAY 1995					
	TOTAL NONEXMT JOBS/FDP RECI- PIENTS	EMPLOYMENT DIRECTED ACTIVITIES(1)			PARTIC IN EDAs & REC SUPPORT SERVICES		PARTIC W/ 1st C M INTV	# EMPL THIS MONTH & STILL REC AFDC	# CLSD ON FAMIS RE: EARNGS(2)	POST AFDC & REC CH CARE
		TRAIN- ING	EDUCA- TION	JOB SEARCH	TREs	CHILD CARE				
ATLANTIC	1,860	427	303	65	426	295	144	50	83	139
BERGEN	1,679	193	157	78	196	150	71	7	32	68
BURLINGTON	1,443	275	166	49	364	191	125	39	62	114
CAMDEN	8,161	308	674	59	995	686	138	30	171	230
CAPE MAY	769	24	42	13	40	13	77	28	38	4
CUMBERLAND	1,739	314	331	47	671	342	228	32	87	143
ESSEX	16,473	1,162	993	164	1,798	909	473	20	162	109
GLOUCESTER	1,094	289	150	20	453	134	90	8	40	71
HUDSON	11,938	956	1,649	89	2,334	1,148	451	48	125	231
HUNTERDON	111	10	19	9	8	9	8	3	7	13
MERCER	2,847	204	342	89	323	238	104	26	67	112
MIDDLESEX	3,488	306	209	45	337	151	293	25	89	110
MONMOUTH	2,530	278	277	69	454	338	262	34	69	163
MORRIS	479	73	47	7	57	38	30	3	19	25
OCEAN	2,140	246	203	115	200	170	232	43	87	28
PASSAIC	3,869	766	483	78	1,026	362	234	35	103	148
SALEM	473	84	107	7	119	85	30	9	15	58
SOMERSET	493	73	119	17	88	85	26	13	13	48
SUSSEX	283	33	62	48	48	38	14	3	20	20
UNION	3,788	373	396	110	686	325	235	25	82	109
WARREN	388	40	71	45	20	26	3	9	24	20
STATE	66,045	6,434	6,800	1,223	10,643	5,733	3,268	490	1,395	1,963

(1) - The number of participants receiving support services may occasionally exceed the number actively participating in EDAs. This can result from extended assessment or evaluation activities or, the issuance of bridge payments.

(2) - FAMIS file date 5/20/95

New Jersey Department of Human Services
Division of Family Development

TABLE 5**AFDC Program State Summary**

NUMBER OF APPLICATIONS AND TERMINATIONS DURING REPORT MONTH,
AND NUMBER OF ELIGIBLE FAMILIES RECEIVING AFDC AT END OF REPORT MONTH

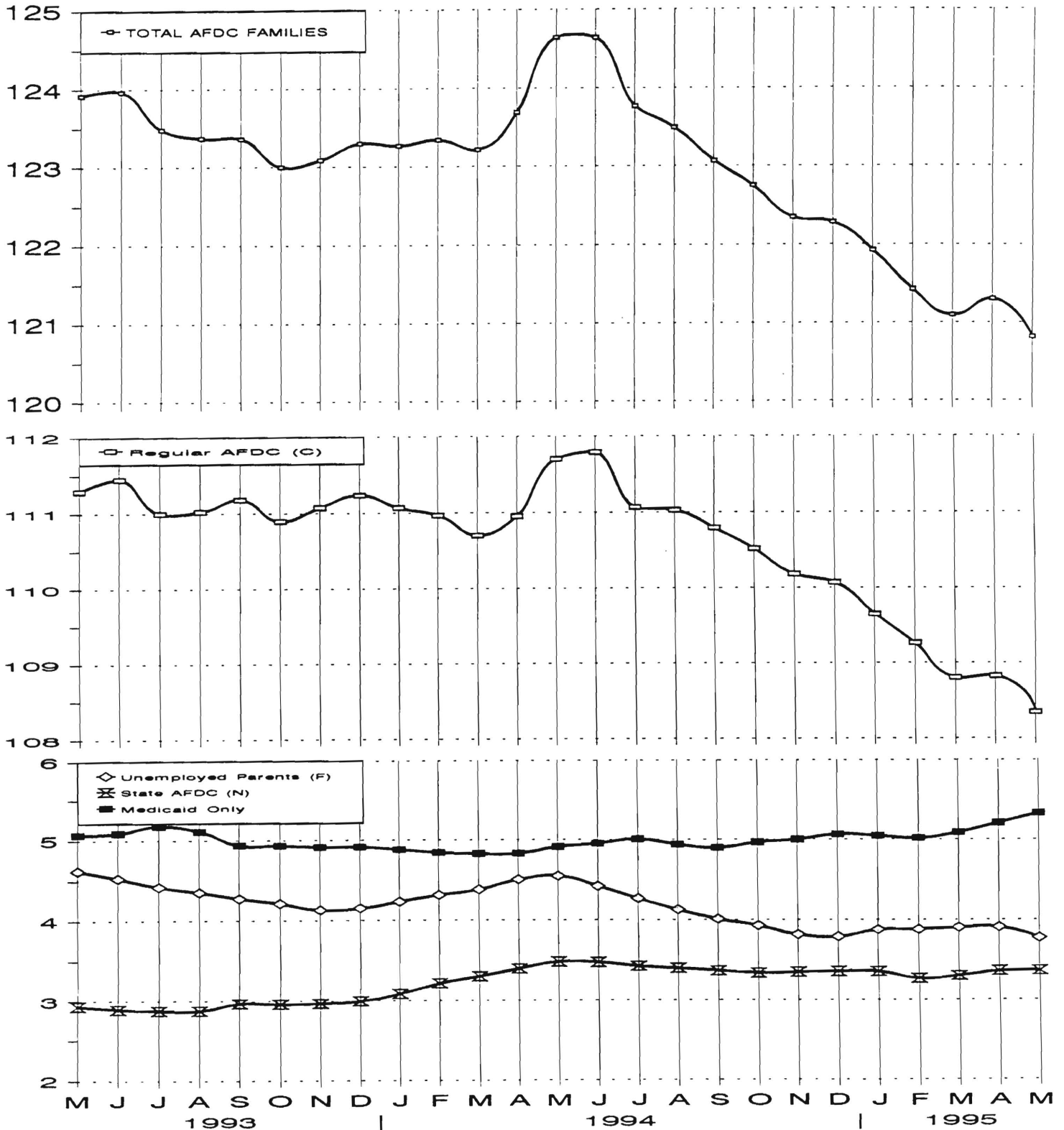
May 1993 through May 1995

	Applications Approved	Termin- ations	Regular AFDC (C Segment)	Unemployed Parents (F)	State AFDC (N)	Medicaid Only	TOTAL AFDC
1993 May	6,532	5,947	111,290	4,626	2,935	5,068	123,919
Jun	5,360	5,330	111,445	4,533	2,898	5,091	123,967
Jul	5,292	5,771	110,996	4,424	2,880	5,179	123,479
Aug	6,103	6,235	111,020	4,355	2,879	5,111	123,365
Sep	5,795	5,857	111,177	4,274	2,969	4,939	123,359
Oct	5,380	5,820	110,893	4,213	2,961	4,934	123,001
Nov	6,774	6,902	111,072	4,131	2,969	4,916	123,088
Dec	5,590	5,462	111,231	4,152	2,997	4,915	123,295
AVERAGE (12 MONTHS)	5,760	5,688	110,942	4,365	2,860	5,012	123,178
1994 Jan	5,452	5,349	111,067	4,232	3,085	4,881	123,265
Feb	5,449	5,518	110,964	4,314	3,214	4,844	123,336
Mar	5,693	5,893	110,699	4,383	3,301	4,831	123,214
Apr	6,284	5,997	110,951	4,506	3,399	4,834	123,690
May	7,094	6,188	111,700	4,549	3,483	4,913	124,645
Jun	5,758	5,742	111,787	4,423	3,477	4,953	124,640
Jul	5,117	5,898	111,064	4,266	3,428	5,007	123,765
Aug	6,435	6,827	111,025	4,128	3,401	4,940	123,494
Sep	6,266	6,754	110,790	4,007	3,369	4,900	123,066
Oct	6,592	6,950	110,517	3,927	3,340	4,966	122,750
Nov	6,344	6,796	110,181	3,814	3,350	5,002	122,347
Dec	5,682	5,890	110,070	3,789	3,360	5,065	122,284
AVERAGE	6,014	6,150	110,901	4,195	3,351	4,928	123,375
1995 Jan	5,583	5,944	109,645	3,875	3,358	5,045	121,923
Feb	5,964	6,515	109,261	3,878	3,270	5,016	121,425
Mar	5,810	6,221	108,800	3,903	3,305	5,088	121,096
Apr	7,096	7,086	108,822	3,907	3,365	5,209	121,303
May	5,288	5,784	108,343	3,773	3,369	5,328	120,813
AVERAGE	5,948	6,310	108,974	3,867	3,333	5,137	121,312

Data Sources: Data is derived from NJ Division of Family Development's FAMIS report # FF-012.

Eligible Families Receiving AFDC

May 1993 through May 1995
(Thousands of Families)



New Jersey Department of Human Services
Division of Family Development

TABLE 6

FOOD STAMP Program State Summary

NUMBER OF ATP'S ISSUED TO HOUSEHOLDS, PERSONS,
ADULTS AND CHILDREN AT THE END OF THE REPORT MONTH

May 1993 through May 1995

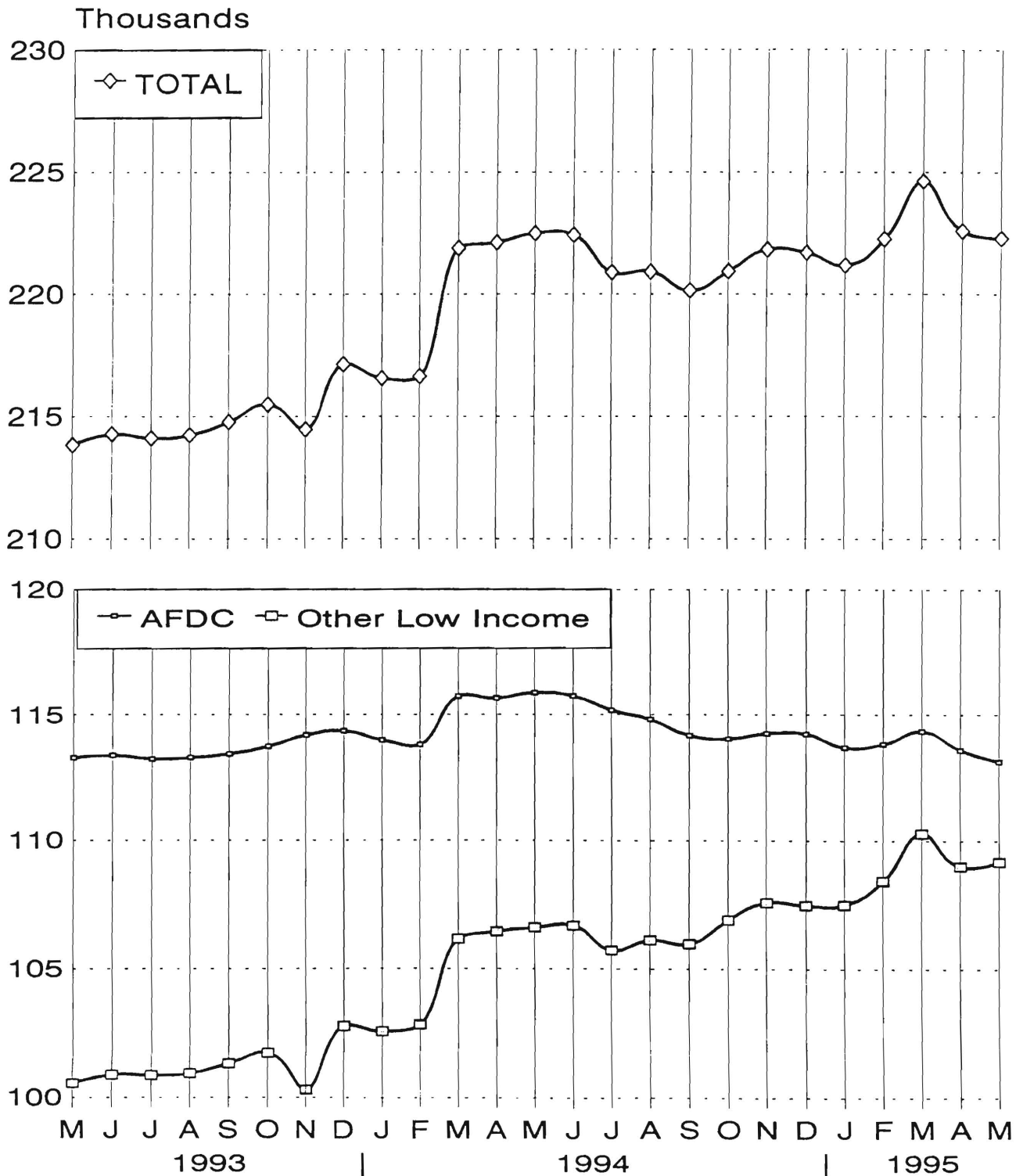
		HOUSEHOLDS			PERSONS					
		AFDC	Other low income	TOTAL	TOTAL	AFDC	Other low income	Adults	Children	
1993	May	113,282	100,555	213,837	516,825	357,958	158,867	239,134	277,691	
	Jun	113,383	100,890	214,273	517,200	358,320	158,880	239,364	277,836	
	Jul	113,238	100,872	214,110	516,546	357,867	158,679	238,893	277,653	
	Aug	113,292	100,947	214,239	516,113	358,109	158,004	238,801	277,312	
	Sep	113,439	101,341	214,780	516,517	358,261	158,256	239,247	277,270	
	Oct	113,737	101,753	215,490	517,657	358,804	158,853	239,902	277,755	
	Nov	114,180	100,295	214,475	519,932	360,125	159,807	241,029	278,903	
	Dec	114,348	102,790	217,138	521,307	360,858	160,449	241,989	279,318	
	AVERAGE (12 Months)		113,235	100,374	213,609	515,793	357,762	158,032	238,605	277,188
	1994	Jan	113,984	102,590	216,574	519,549	359,422	160,127	241,575	277,974
Feb		113,804	102,843	216,647	519,760	359,227	160,533	241,993	277,767	
Mar		115,730	106,160	221,890	530,892	365,132	165,760	248,219	282,673	
Apr		115,661	106,454	222,115	530,591	365,241	165,350	248,331	282,260	
May		115,874	106,611	222,485	530,595	364,941	165,654	248,420	282,175	
Jun		115,737	106,683	222,420	529,514	364,394	165,120	248,099	281,415	
Jul		115,172	105,717	220,889	526,075	362,520	163,555	246,142	279,933	
Aug		114,809	106,115	220,924	524,659	361,106	163,553	246,052	278,607	
Sep		114,177	105,972	220,149	521,945	358,849	163,096	244,835	277,110	
Oct		114,039	106,903	220,942	522,406	358,010	164,396	245,676	276,730	
Nov		114,251	107,577	221,828	524,090	358,582	165,508	246,659	277,431	
Dec		114,232	107,467	221,699	523,825	358,446	165,379	246,517	277,308	
AVERAGE		114,789	105,924	220,714	525,325	361,323	164,003	246,043	279,282	
1995	Jan	113,691	107,493	221,184	522,125	356,763	165,362	245,837	276,288	
	Feb	113,830	108,421	222,251	524,344	357,419	166,925	247,107	277,237	
	Mar	114,339	110,279	224,618	529,456	359,404	170,052	249,994	279,462	
	Apr	113,588	108,991	222,579	524,102	356,717	167,385	247,367	276,735	
	May	113,125	109,171	222,296	522,173	355,099	167,074	246,949	275,224	
	AVERAGE		113,715	108,871	222,586	524,440	357,080	167,360	247,451	276,989

ATP - Authorization to Participate

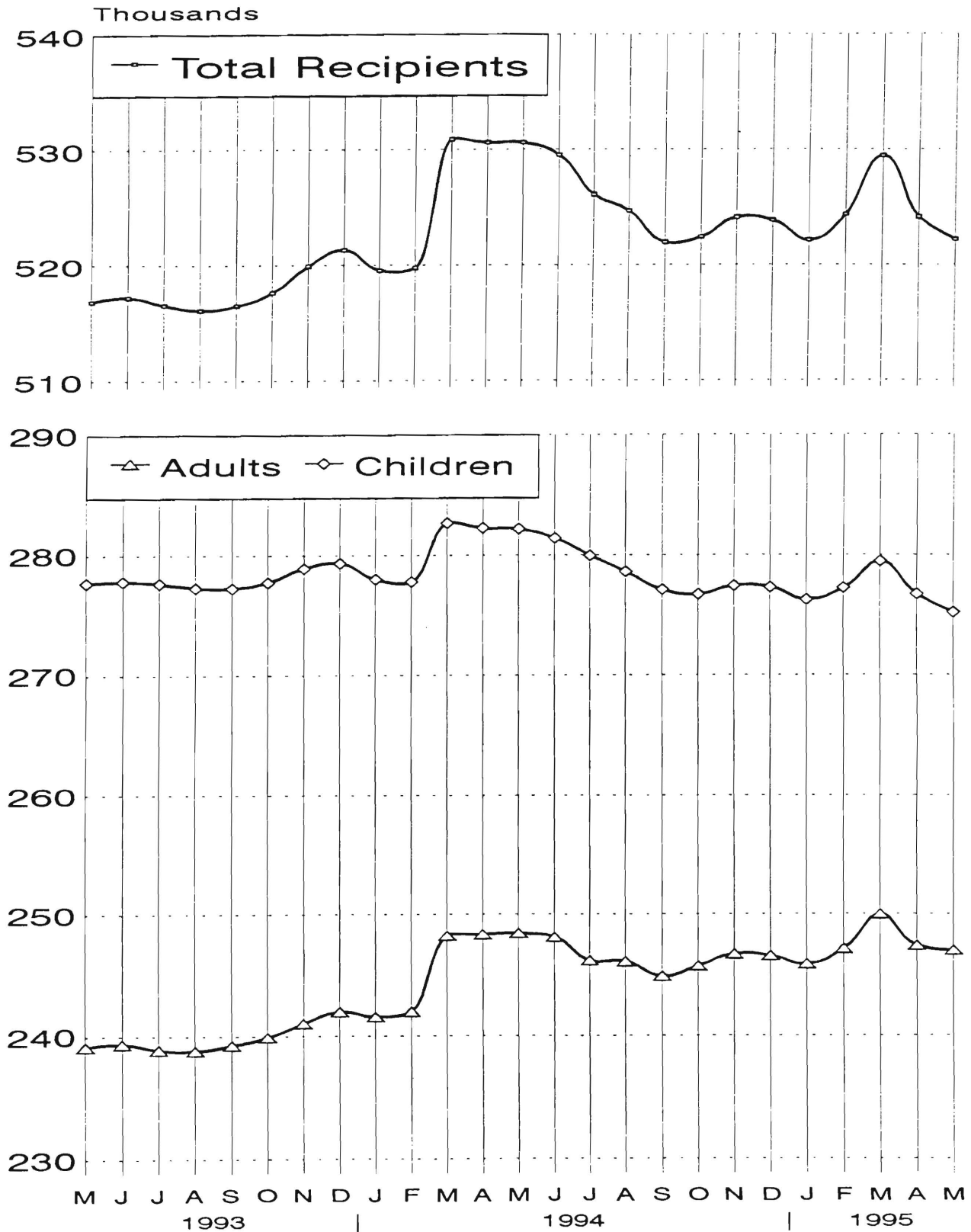
Data Sources: Data is derived from NJ Division of Family Development's FAMIS report # FB-160.

Food Stamp Households

May 1993 through May 1995



Food Stamp Recipients
May 1993 through May 1995



New Jersey Department of Human Services
Division of Family Development

TABLE 7

EMERGENCY ASSISTANCE Program for AFDC recipients
State Summary

NUMBER OF APPLICATIONS AND TERMINATIONS DURING REPORT MONTH,
AND NUMBER OF ELIGIBLE FAMILIES RECEIVING EMERGENCY ASSISTANCE
AT END OF REPORT MONTH

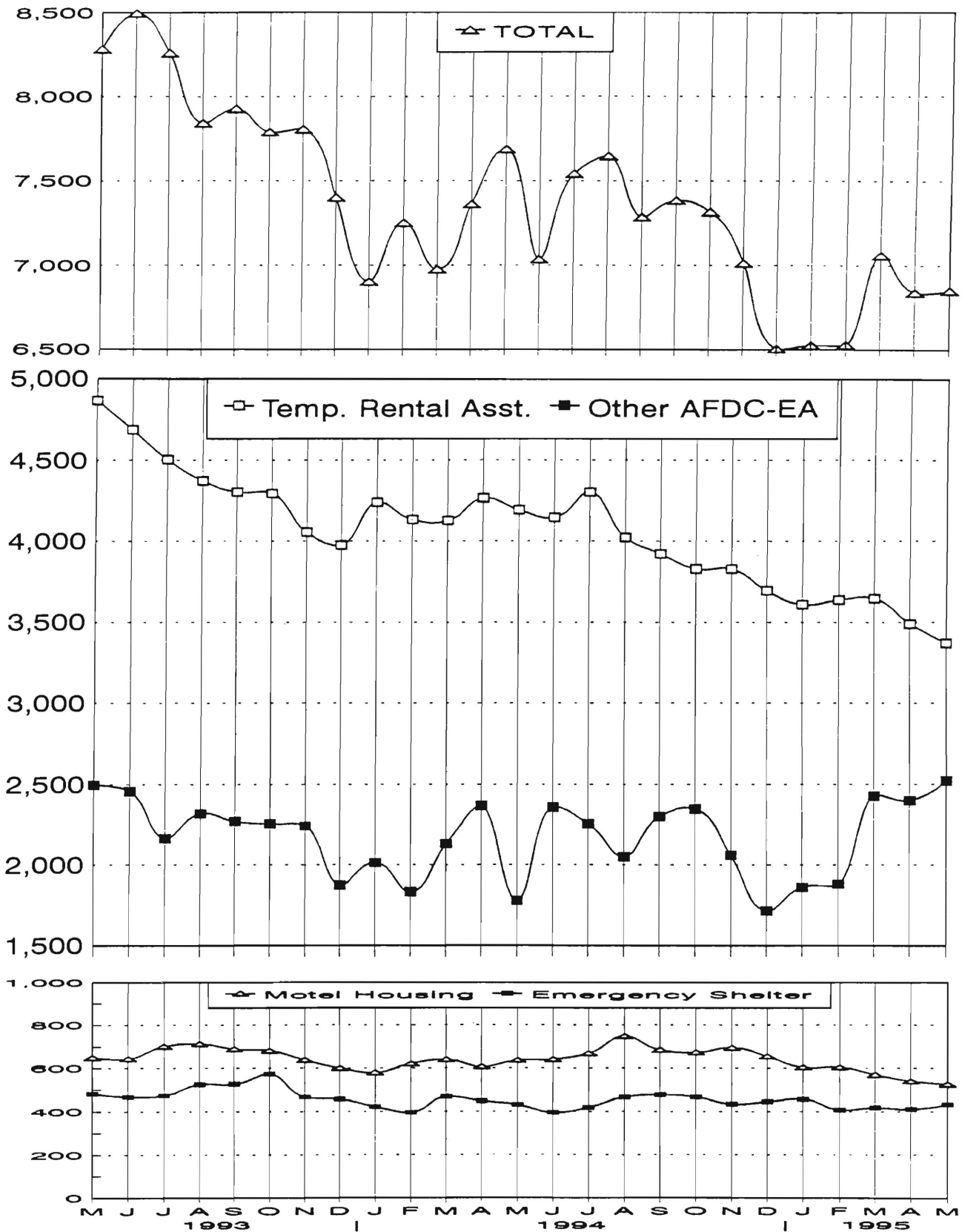
May 1993 through May 1995

		Applications Approved	Terminations	Total families receiving EA	Temporary rental assist.	Motel Housing	Emergency Shelter	Other AFDC-EA
1993	May	3,051	2,505	8,497	4,866	650	483	2,498
	Jun	3,054	2,477	8,257	4,688	644	467	2,458
	Jul	2,998	2,126	7,842	4,504	701	474	2,163
	Aug	3,388	2,212	7,929	4,372	713	524	2,320
	Sep	2,917	2,360	7,791	4,302	689	526	2,274
	Oct	3,461	2,397	7,806	4,294	681	573	2,258
	Nov	2,867	2,306	7,402	4,053	638	467	2,244
	Dec	2,431	1,810	6,903	3,974	600	457	1,872
AVERAGE (12 MONTHS)		3,053	2,308	7,870	4,465	685	497	2,223
1994	Jan	2,456	2,022	7,252	4,239	579	422	2,012
	Feb	2,019	1,716	6,977	4,131	621	395	1,830
	Mar	3,146	1,911	7,362	4,125	640	468	2,129
	Apr	3,115	2,246	7,689	4,265	607	448	2,369
	May	3,264	2,453	7,036	4,192	637	431	1,776
	Jun	2,945	2,202	7,542	4,145	641	395	2,361
	Jul	2,756	1,866	7,647	4,302	669	419	2,257
	Aug	2,972	2,144	7,285	4,021	749	466	2,049
	Sep	3,173	2,202	7,385	3,919	685	478	2,303
	Oct	2,787	2,125	7,315	3,827	673	466	2,349
	Nov	2,667	1,865	7,013	3,826	695	434	2,058
	Dec	2,313	1,624	6,506	3,693	655	445	1,713
AVERAGE		2,801	2,031	7,251	4,057	654	439	2,101
1995	Jan	2,419	1,883	6,526	3,607	604	457	1,858
	Feb	2,418	1,815	6,528	3,636	605	408	1,879
	Mar	2,874	2,136	7,062	3,645	570	418	2,429
	Apr	2,412	2,046	6,840	3,488	540	411	2,401
	May	2,504	2,248	6,853	3,371	526	433	2,523
	AVERAGE		2,525	2,026	6,762	3,549	569	425

Data Sources: Data is compiled by County Welfare Agencies & reported to the NJ Division of Family Development on report form # PA-217.

GRAPH 7

AFDC Families Receiving Emergency Assistance May 1993 through May 1995



New Jersey Department of Human Services
Division of Family Development

TABLE 8
JOBS/FDP PARTICIPATION RATES BY MONTH
(PERCENT)

COUNTY	OCT 93	NOV 93	DEC 93	JAN 94	FEB 94	MAR 94	APR 94	MAY 94	JUN 94	JUL 94	AUG 94	SEP 94	OCT 94	NOV 94	DEC 94	JAN 95	FEB 95	MAR 95	APR 95	MAY 95
ATLANTIC	33.3	33.1	33.5	32.0	32.9	38.2	34.7	36.6	31.0	26.0	24.8	33.0	39.0	38.0	32.8	34.2	39.8	46.1	46.3	44.0
BERGEN	26.3	23.9	24.4	22.4	18.8	20.6	20.7	24.2	22.9	23.5	23.0	27.6	29.3	29.7	29.7	28.6	23.9	27.3	26.9	28.3
BURLINGTON	20.6	21.0	19.0	18.4	19.6	28.0	28.6	29.6	26.8	24.7	23.7	22.7	26.2	23.9	24.4	22.9	21.8	28.5	29.2	28.6
CAMDEN	19.6	18.0	13.3	11.7	13.6	16.2	16.0	17.6	13.8	12.6	11.1	14.3	18.5	18.3	15.5	11.7	13.6	16.3	15.7	12.9
CAPE MAY	6.2	5.4	5.6	5.2	5.4	8.6	7.2	11.8	6.9	4.4	6.3	5.8	10.4	7.3	7.5	5.5	6.0	7.2	7.9	10.9
CUMBERLAND	42.6	42.8	40.9	39.0	40.9	48.7	50.8	53.2	48.3	44.7	45.1	52.5	56.4	53.7	51.5	52.2	52.1	58.6	64.1	64.0
ESSEX	3.9	4.3	4.1	3.7	4.1	5.2	5.7	6.3	6.7	6.0	5.5	7.2	8.5	8.8	8.3	7.8	8.8	11.0	13.0	15.7
GLOUCESTER	27.2	27.0	23.6	20.4	21.2	26.0	23.6	20.7	17.6	16.2	15.8	20.0	24.0	25.5	24.2	22.8	28.1	31.6	28.7	26.4
HUDSON	16.6	16.6	17.6	17.5	16.3	18.4	19.0	19.7	18.1	17.0	15.7	17.9	19.5	20.0	21.1	19.6	18.1	22.9	23.8	25.4
HUNTERDON	18.1	16.6	17.4	12.5	12.7	15.5	13.3	17.5	15.0	13.3	11.1	13.4	14.2	13.5	16.1	11.5	26.2	25.8	26.1	30.6
MERCER	31.8	30.6	29.7	27.1	24.2	26.2	26.0	27.6	26.4	28.4	28.3	27.9	30.5	30.4	30.4	28.7	27.0	32.5	31.9	33.1
MIDDLESEX	9.5	9.7	10.3	9.8	12.0	16.2	16.2	17.9	17.4	16.3	16.5	17.1	20.8	18.2	18.8	18.8	16.8	16.9	16.3	17.4
MONMOUTH	26.5	27.4	27.5	26.4	24.7	27.9	25.7	26.0	25.2	23.2	22.3	23.7	29.2	28.2	27.8	27.3	26.8	29.9	29.6	29.1
MORRIS	25.7	24.3	24.0	20.3	21.9	22.4	22.6	23.1	18.6	17.3	13.7	18.7	21.7	22.2	22.4	14.4	19.5	22.9	31.9	42.0
OCEAN	12.2	12.0	11.3	10.1	9.7	12.9	13.2	12.7	10.8	10.6	9.0	9.9	13.4	16.7	18.1	15.8	18.6	23.6	26.4	25.0
PASSAIC	23.5	22.7	22.0	22.1	21.0	24.9	26.0	29.2	26.1	27.7	24.3	25.9	31.9	33.9	33.0	32.1	31.7	35.1	33.9	37.7
SALEM	46.5	44.7	36.8	29.5	39.7	49.3	49.8	50.3	26.7	21.2	19.8	32.2	44.8	44.2	38.3	36.7	41.7	46.6	50.0	48.4
SOMERSET	42.6	41.8	39.1	31.6	33.1	38.6	37.0	37.0	33.2	33.4	26.9	45.4	48.3	49.1	47.4	54.7	48.7	62.0	61.3	68.0
SUSSEX	38.4	40.2	39.7	38.9	28.1	32.4	33.7	42.0	38.3	19.7	23.0	39.2	42.6	48.7	49.6	40.2	43.3	48.2	45.3	41.7
UNION	27.5	27.2	27.8	25.9	24.2	26.9	24.6	25.8	23.9	24.2	21.8	27.9	29.5	28.7	28.6	27.7	26.0	29.6	28.9	31.4
WARREN	28.8	26.8	26.7	17.2	14.3	22.5	37.0	57.1	63.0	61.5	71.0	72.5	65.4	52.6	52.2	47.7	46.1	50.3	47.2	48.7
STATE	17.8	17.6	17.2	16.0	16.0	18.8	18.9	20.1	18.3	17.3	16.3	19.1	21.8	21.8	21.5	20.4	20.3	23.8	24.5	25.7

New Jersey Department of Human Services
Division of Family Development

TABLE 9

GENERAL ASSISTANCE Program
State Summary

NUMBER OF EMPLOYABLE AND UNEMPLOYABLE
RECIPIENTS DURING REPORT MONTH

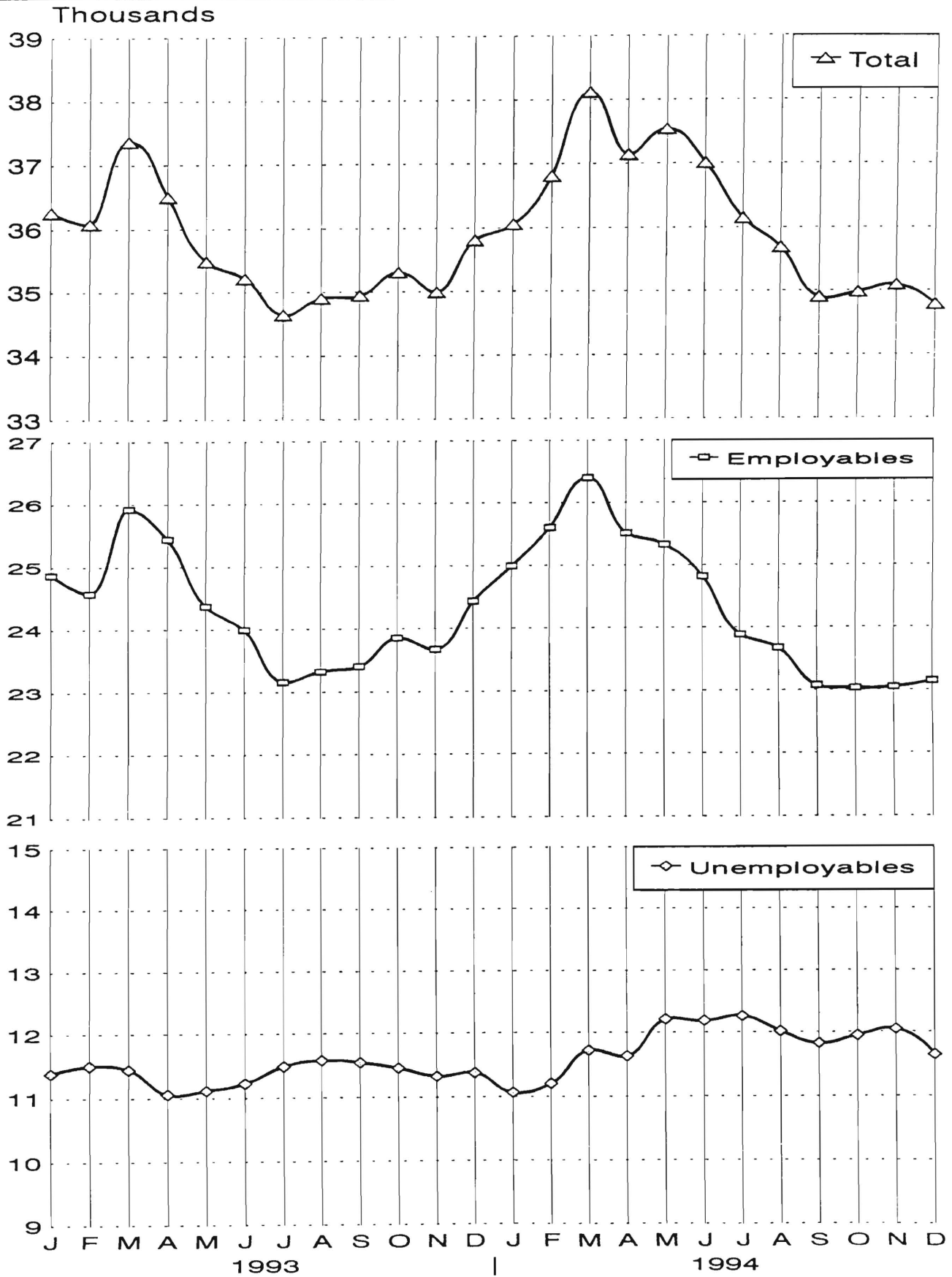
January 1993 through December 1994

		Number of Persons Aided		
		Employables	Unemployables	Total
1993	Jan	24,873	11,384	36,257
	Feb	24,576	11,503	36,079
	Mar	25,921	11,445	37,366
	Apr	25,438	11,057	36,495
	May	24,370	11,113	35,483
	Jun	23,989	11,225	35,214
	Jul	23,156	11,488	34,644
	Aug	23,320	11,580	34,900
	Sep	23,402	11,542	34,944
	Oct	23,853	11,455	35,308
	Nov	23,668	11,324	34,992
	Dec	24,435	11,374	35,809
1993	AVERAGE	24,250	11,374	35,624
1994	Jan	24,992	11,062	36,054
	Feb	25,600	11,202	36,802
	Mar	26,397	11,719	38,116
	Apr	25,512	11,629	37,141
	May	25,327	12,212	37,539
	Jun	24,814	12,190	37,004
	Jul	23,884	12,261	36,145
	Aug	23,671	12,018	35,689
	Sep	23,075	11,825	34,900
	Oct	23,031 r	11,950 r	34,981 r
	Nov	23,046 r	12,045 r	35,091 r
	Dec	23,142	11,642	34,784
1994	AVERAGE	24,486	11,828	36,315

r - Revised

General Assistance Recipients

January 1993 through December 1994



New Jersey Department of Human Services
Division of Family Development

TABLE 10
CHILD SUPPORT AND PATERNITY
State Summary

CHILD SUPPORT AND PATERNITY
COLLECTIONS AND TOTAL DISTRIBUTION

\$1000'S

	Fiscal Years 1993 and 1994			Most Recent 9 Months		
	1993	1994	% CHG.	7/93-3/94	7/94-3/95	% CHG.
COLLECTION SOURCE						
AFDC & FOSTER CARE						
Federal Tax	\$13,139	\$15,255	16.1%	\$3,580	\$2,549	-28.8%
State Tax	1,631	1,970	20.8%	1,700	1,440	-15.3%
Unempl. Ins. Ben.	7,249	4,975	-31.4%	3,864	2,566	-33.6%
Income Withholding	40,928	43,219	5.6%	32,054	33,715	5.2%
Other/Own Behalf	19,130	18,137	-5.2%	13,525	13,726	1.5%
From Other States	4,370	3,621	-17.1%	2,768	2,577	-6.9%
For Other States	5,864	5,269	-10.1%	3,577	5,104	42.7%
TOTAL COLLECTION	\$92,311	\$92,446	0.1%	\$61,069	\$61,678	1.0%
NON- AFDC						
Federal Tax	\$4,937	\$3,846	-22.1%	\$2,018	\$1,544	-23.5%
State Tax	1,459	2,193	50.3%	1,884	1,700	-9.8%
Unempl. Ins. Ben.	19,274	15,035	-22.0%	11,530	9,191	-20.3%
Income Withholding	158,036	213,431	35.1%	156,304	185,025	18.4%
Other/Own Behalf	117,224	143,676	22.6%	106,753	117,329	9.9%
From Other States	20,199	19,832	-1.8%	14,909	15,470	3.8%
For Other States	24,316	19,893	-18.2%	13,385	20,241	51.2%
TOTAL COLLECTION	\$345,445	\$417,905	21.0%	\$306,785	\$350,499	14.2%
TOTAL						
Federal Tax	\$18,076	\$19,101	5.7%	\$5,599	\$4,093	-26.9%
State Tax	3,090	4,162	34.7%	3,584	3,140	-12.4%
Unempl. Ins. Ben.	26,523	20,010	-24.6%	15,394	11,756	-23.6%
Income Withholding	198,965	256,650	29.0%	188,358	218,741	16.1%
Other/Own Behalf	136,354	161,813	18.7%	120,278	131,055	9.0%
From Other States	24,568	23,453	-4.5%	17,677	18,047	2.1%
For Other States	30,180	25,162	-16.6%	16,962	25,346	49.4%
TOTAL COLLECTION	\$437,756	\$510,351	16.6%	\$367,854	\$412,177	12.0%

Collection Source: Reflects Collections Recorded by County Probation Departments

Explanatory Notes

The Department of Human Services Division of Family Development provides basic income and an opportunity to achieve self-sufficiency for individuals and families served by the Division's programs. The Division provides leadership, direction and supervision to those public agencies responsible for administering those programs and plans for and develops policies to promote self-sufficiency.

AID TO FAMILIES WITH DEPENDENT CHILDREN (AFDC) - Financial assistance for dependent children and their natural or adoptive parents, or certain other relatives recognized as taking the place of a parent.

Regular AFDC (C Segment) - assistance when only one parent is in the home due to death or absence, or both parents are in the home but at least one is incapacitated.

Unemployed Parents (F Segment) - assistance when both parents are in the home, neither is incapacitated and the primary wage earner meets the federally defined criteria for unemployment.

State AFDC (N Segment) - assistance when both parents are in the home, neither is incapacitated, and the primary wage earner does not meet the federal definition of unemployment.

Medicaid Only - families no longer receiving AFDC financial assistance but remaining eligible for Medicaid under applicable provisions which extend coverage beyond period of AFDC assistance.

FOOD STAMP PROGRAM (FS) - Authorized by Congress as a nutritional supplement program to provide low income households with more food of greater variety and better nutrition. Program eligibility is based on household income, resources, and expenses for medical, shelter, and dependent care. CWA staff refer certain recipients to the New Jersey Department of Labor for participation in the Food Stamp Employment and Training Program.

EMERGENCY ASSISTANCE (EA) - Payments to those eligible for AFDC (also for General Assistance or Supplemental Security Income, not included here), authorized during the 30 consecutive days immediately following the emergency (defined as a substantial loss of shelter, food, clothing, or household furnishings by fire, flood or other similar disaster) or if the eligible individual or family is in an imminent or actual state of homelessness.

JOBS/FDP

JOB OPPORTUNITY AND BASIC SKILLS PROGRAM (JOBS) - Federally mandated work/training program for recipients of AFDC established by the Family Support Act of 1988 under Part F of Title IV of the Social Security Act.

FAMILY DEVELOPMENT PROGRAM (FDP) - Reform legislation enacted by the State Legislature in January 1992 to: build, strengthen, and support the family unit; encourage family formation; reduce the long-term aspects of welfare dependency; look to the needs of the family unit as a whole; emphasize education and training for all family members; maximize use of educational, training and employment resources; and develop genuine private sector job opportunities.

SNAPSHOT OF ACTIVITY AT POINT IN TIME - Status of activities as of the end of the month:

Total Non-Exempt JOBS/FDP Recipients - Calculation of the number of mandatory IV-F individuals (FAMIS report # FB304).

Employment Directed Activities (EDA) - From Activities Summary Report (OMEGA report # RM064). Unduplicated count of persons participating in **Training, Education, or Job Search**.

Participants in EDA, Receiving Support Services - From Issuance Disbursement Summary (OMEGA report # RM703). Total number of active participants who show receipt of **Training Related Expenses** or **Child Care**.

Participation Rate (JOBS/FDP) - Federally mandated calculation method, dividing the number of participants whose combined and averaged weekly hours of participation in qualifying activities equals or exceeds 20 hours per week by the total number of non-exempt IV-F recipients. As of the end of the month.

ACTIVITY FOR THE MONTH - Number of participants with the indicated activity during the month:

Participants with First Case Management Interview - From Activities Summary Report (OMEGA report # RM064).

Number of Persons Employed This Month, Still Receiving AFDC - From Activities Summary Report (OMEGA report # RM064).

Number of Persons Closed on FAMIS Due to Earnings - From FAMIS report # FM463.

Post AFDC and Receiving Child Care - Persons no longer in receipt of AFDC, but still receiving child care. From Issuance Disbursement Summary (OMEGA report # RM703).

New Jersey Department of Human Services
Division of Family Development

TABLE 11**GENERAL ASSISTANCE Program**

NUMBER OF EMPLOYABLE AND UNEMPLOYABLE
RECIPIENTS DURING REPORT MONTH
Counties and 21 Largest Municipalities

December 1994

County	Employables	Unemployables	Total	Municipality	Employables	Unemployables	Total
ATLANTIC	1,349	505	1,854	Atlantic City	1,086	271	1,357
BERGEN	505	857	1,362	Mount Holly	1,194	104	298
BURLINGTON	783	424	1,207	Camden	2,091	756	2,847
CAMDEN	2,532	1,206	3,738	Vineland	200	112	312
CAPE MAY	226	141	367	East Orange	549	443	992
CUMBERLAND	409	233	642	Irvington	244	71	315
ESSEX	6,904	2,124	9,028	Montclair	200	109	309
GLOUCESTER	182	193	375	Newark	5,296	1,317	6,613
HUDSON	1,517	1,096	2,613	Orange	466	37	503
HUNTERDON	61	53	114	Bayonne	139	72	211
MERCER	1,963	726	2,689	Hoboken	179	112	291
MIDDLESEX	633	514	1,147	Jersey City	654	550	1,204
MONMOUTH	1,135	876	2,011	Trenton	1,841	597	2,438
MORRIS	169	258	427	Perth Amboy	153	104	257
OCEAN	848	542	1,390	Asbury Park	326	102	428
PASSAIC	1,944	588	2,532	Long Branch	244	116	360
SALEM	182	94	276	Lakewood	398	127	525
SOMERSET	83	137	220	Passaic	444	218	662
SUSSEX	83	78	161	Paterson	1,371	184	1,555
UNION	1,587	934	2,521	Elizabeth	1,054	537	1,591
WARREN	47	63	110	Plainfield	170	89	259
NJ TOTAL	23,142	11,642	34,784	TOTAL	17,299	6,028	23,327