

The New Jersey Department of Education (NJDOE) is pleased to present these annual reports of School Performance. These reports are designed to inform parents, educators and communities about how well a school is performing and preparing its students for college and careers.

In particular, the School Performance Reports seek to:

- **Focus** attention on metrics that are indicative of college and career readiness.
- **Benchmark** a school's performance against other peer schools that are educating similar students, against statewide outcomes, and against state targets to illuminate and build upon a school's strengths and identify areas for improvement.
- **Improve** educational outcomes for students by providing both longitudinal and growth data so that progress can be measured as part of an individual school's efforts to engage in continuous improvement.

While the New Jersey School Performance Reports seek to bring more information to educators and stakeholders about the performance of schools, they do not seek to distill the performance of schools into a single metric, a single score, or a simplified conclusion. Instead, the intention is that educators and stakeholders will engage in deep, lengthy conversations about the full range of the data presented. As educators know well, measuring school performance is both an art and a science. While the School Performance Report brings attention to important student outcomes, NJDOE does not collect data about other essential elements of a school, such as the provision of opportunities to participate and excel in extracurricular activities; the development of non-cognitive skills like time management and perseverance; the pervasiveness of a positive school culture or climate; or the attainment of other employability and technical skills, as many of these data are beyond both the capacity and resources of schools to measure and collect well.

To learn more about New Jersey's school accountability system, please visit: <http://www.nj.gov/education/educators/>.

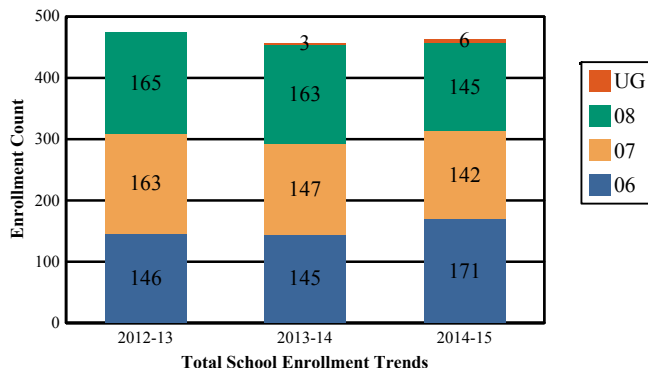
**DEMOGRAPHIC INFORMATION**

MORRIS  
CHESTER TWP

GRADE SPAN 06-08

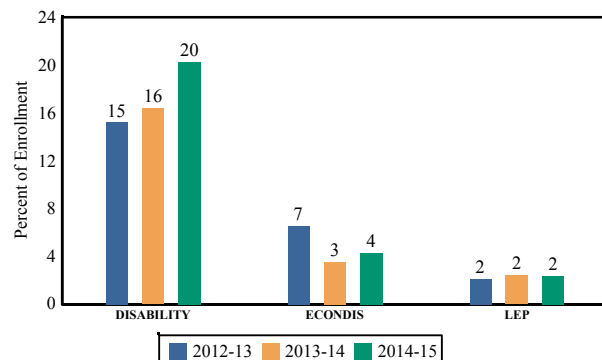
**Enrollment by Grade**

This graph presents the count of students who were 'on roll' by grade in October of each school year.



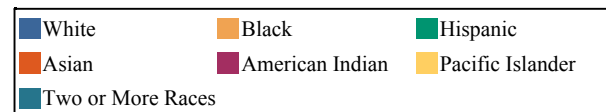
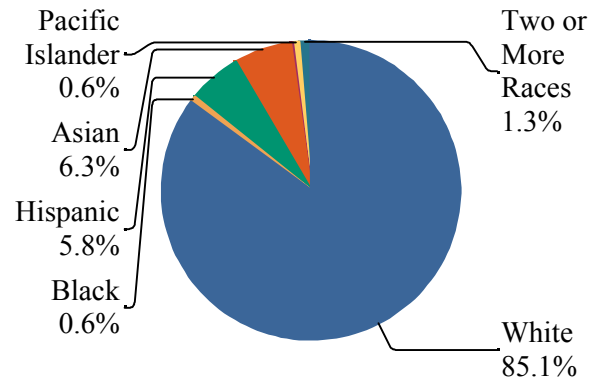
**Enrollment Trends by Program Participation**

This graph presents the percentages of students by program participation who were 'on roll' in October of each school year.



**Enrollment by Ethnic/Racial Subgroup**

This graph presents the percentages of enrollment for each subgroup defined by the No Child Left Behind Act of 2001.



**Current Year Enrollment by Program Participation**

2014-15	Count of Students	% of Enrollment
Students with Disability	94	20%
Economically Disadvantaged Students	20	4.3%
English Language Learners	11	2.4%

**Language Diversity**

This table presents the percentage of students who primarily speak each language in their home.

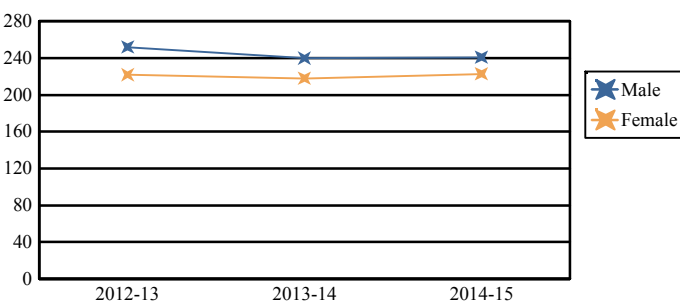
2014-15	Percent
English	97.2%
Spanish	2.2%
French	0.4%
Persian	0.2%

Note: "UG" represents the count of students who are 'on roll' in this school but who are educated in ungraded classrooms, meaning that the classrooms may contain students from multiple grade levels.

Total School Enrollment	
2012-13	474
2013-14	458
2014-15	464

**Enrollment by Gender**

This graph presents the count of students by gender who were 'on roll' in October of each school year.



	Male	Female
2012-13	252	222
2013-14	240	218
2014-15	241	223

**ACADEMIC ACHIEVEMENT**

**MORRIS  
CHESTER TWP**

**GRADE SPAN 06-08**

**BLACK RIVER MIDDLE SCHOOL  
133 RT. 513 - NORTH ROAD  
CHESTER, NJ 07930**

The Academic Achievement section measures the content knowledge that students have in English Language Arts/Literacy (ELA/L) and Math as demonstrated in the 2014-2015 *Partnership for Assessment of Readiness for College and Careers* (PARCC) assessments. The below chart consist of three columns. The first column - Schoolwide Performance - includes the percentage of students in ELA/L and Math who met or exceeded grade level expectations. The middle column - Peer School Percentile - indicates how the school's outcomes compared to its peers. The last column - Statewide Percentile - indicates how the school's outcomes compared to schools across the state.

<b>Academic Achievement Indicators</b>	<b>Schoolwide Performance</b>	<b>Peer Percentile</b>	<b>State Percentile</b>
English Language Arts/Literacy Met or Exceeded Expectation	75%	75	90
Math Met or Exceeded Expectation	72%		

**ESEA Waiver - English Language Arts/Literacy**

This table presents, for each subgroup in the school, the total number of valid test scores, the percentage of students who met or exceeded expectations, the assessment participation goal, and the participation rate. The participation goal is established as 95% by the United States Department of Education.

<b>Subgroups</b>	<b>Valid Scores</b>	<b>% Meeting Standards</b>	<b>Participation Goal</b>	<b>Participation Rate</b>	<b>Met Participation?</b>
Schoolwide	329	74.7%	95%	75.2%	NO
White	278	74.8%	95%	74.3%	NO
African American	-	-	--	--	--
Hispanic	-	-	--	--	--
American Indian	-	-	--	--	--
Asian	-	-	--	--	--
Two or More Races	-	-	--	--	--
Students with Disability	58	41.3%	95%	67.8%	NO
English Language Learners	-	-	--	--	--
Economically Disadvantaged Students	-	-	--	--	--

**YES\* = Met Participation Rate (Participation Averaging applied)**

Data is presented for subgroups when the count is high enough under ESEA Waiver suppression rules.

**ACADEMIC ACHIEVEMENT**

MORRIS  
CHESTER TWP

GRADE SPAN 06-08

BLACK RIVER MIDDLE SCHOOL  
133 RT. 513 - NORTH ROAD  
CHESTER, NJ 07930

**ESEA Waiver - Math**

This table presents, for each subgroup in the school, the total number of valid test scores, the percentage of students who met or exceeded expectations, the assessment participation goal, and the participation rate. The participation goal is established as 95% by the United States Department of Education.

Subgroups	Valid Scores	% Meeting Standards	Participation Goal	Participation Rate	Met Participation?
Schoolwide	329	72.1%	95%	75.2%	NO
White	279	73.5%	95%	74.6%	NO
African American	-	-	--	--	--
Hispanic	-	-	--	--	--
American Indian	-	-	--	--	--
Asian	-	-	--	--	--
Two or More Races	-	-	--	--	--
Students with Disability	58	55.2%	95%	67.8%	NO
English Learner Students	-	-	--	--	--
Economically Disadvantaged Students	-	-	--	--	--

**YES\* = Met Participation Rate (Participation Averaging applied)**

Data is presented for subgroups when the count is high enough under ESEA Waiver suppression rules.

**ACADEMIC ACHIEVEMENT**

MORRIS  
CHESTER TWP

GRADE SPAN 06-08

**PARCC Performance Level**

The PARCC assesses how well students have learned grade-level material in English Language Arts/Literacy (ELA/L) and Math. The tests include questions that measure students' fundamental skills and knowledge, and require them to think critically, solve problems and support or explain their answers.

The PARCC reports students' overall scale scores that range from 650 to 850. To determine whether students have met academic expectations for their grade level/course in ELA/L and Math, students' overall scale scores are categorized into five Performance Levels. Students performing at levels 4 and 5 (met or exceeded expectations) have demonstrated readiness for the next grade level/course, and are on track for college and careers.

Five Performance Levels				
<b>Level 1:</b> Did Not Yet Meet Expectations <i>(Min. 650)</i>	<b>Level 2:</b> Partially Met Expectations	<b>Level 3:</b> Approached Expectations	<b>Level 4:</b> Met Expectations	<b>Level 5:</b> Exceeded Expectations <i>(Max. 850)</i>

**ACADEMIC ACHIEVEMENT**

MORRIS  
CHESTER TWP

GRADE SPAN 06-08

BLACK RIVER MIDDLE SCHOOL  
133 RT. 513 - NORTH ROAD  
CHESTER, NJ 07930

**PARCC ELA Performance Distribution - Grade - 06**

This table presents the grade level outcomes, as measured by PARCC, in all five performance levels for all subgroups. PARCC consists of five performance levels: Level 1 - Did not yet meet grade-level expectations, Level 2 -Partially met expectations, Level 3 - Approached expectations, Level 4 - Met expectations, and Level 5 - Exceeded expectations.

Subgroup	Valid Scores	Mean Scale Score	State Mean Scale Score	% Level_1	% Level_2	% Level_3	% Level_4	% Level_5	% Met/ Exceeded Expectation	State % Met/Exceeded Expectation
Schoolwide	143	765	749	1%	4%	23%	55%	17%	72%	50%
White	117	764	755	0%	5%	25%	56%	14%	70%	59%
African American	-	-	732	-	-	-	-	-	-	29%
Hispanic	-	-	736	-	-	-	-	-	-	34%
American Indian	-	-	743	-	-	-	-	-	-	39%
Asian	15	788	770	0%	0%	13%	33%	53%	87%	77%
Two or More Races	-	-	753	-	-	-	-	-	-	57%
Students with Disability	29	749	718	0%	21%	38%	38%	3%	41%	17%
English Language Learners	-	-	711	-	-	-	-	-	-	11%
Economically Disadvantaged Students	-	-	733	-	-	-	-	-	-	30%

**ACADEMIC ACHIEVEMENT**

MORRIS  
CHESTER TWP

GRADE SPAN 06-08

BLACK RIVER MIDDLE SCHOOL  
133 RT. 513 - NORTH ROAD  
CHESTER, NJ 07930

**PARCC ELA Performance Distribution - Grade - 07**

This table presents the grade level outcomes, as measured by PARCC, in all five performance levels for all subgroups. PARCC consists of five performance levels: Level 1 - Did not yet meet grade-level expectations, Level 2 -Partially met expectations, Level 3 - Approached expectations, Level 4 - Met expectations, and Level 5 - Exceeded expectations.

Subgroup	Valid Scores	Mean Scale Score	State Mean Scale Score	% Level_1	% Level_2	% Level_3	% Level_4	% Level_5	% Met/ Exceeded Expectation	State % Met/Exceeded Expectation
Schoolwide	97	774	750	2%	5%	15%	38%	39%	77%	53%
White	86	774	757	2%	5%	15%	38%	40%	78%	61%
African American	-	-	730	-	-	-	-	-	-	31%
Hispanic	-	-	736	-	-	-	-	-	-	36%
American Indian	-	-	746	-	-	-	-	-	-	49%
Asian	-	-	777	-	-	-	-	-	-	80%
Two or More Races	-	-	756	-	-	-	-	-	-	58%
Students with Disability	14	746	713	7%	14%	29%	21%	29%	50%	18%
English Language Learners	-	-	703	-	-	-	-	-	-	11%
Economically Disadvantaged Students	-	-	733	-	-	-	-	-	-	33%

**ACADEMIC ACHIEVEMENT**

MORRIS  
CHESTER TWP

GRADE SPAN 06-08

BLACK RIVER MIDDLE SCHOOL  
133 RT. 513 - NORTH ROAD  
CHESTER, NJ 07930

**PARCC ELA Performance Distribution - Grade - 08**

This table presents the grade level outcomes, as measured by PARCC, in all five performance levels for all subgroups. PARCC consists of five performance levels: Level 1 - Did not yet meet grade-level expectations, Level 2 -Partially met expectations, Level 3 - Approached expectations, Level 4 - Met expectations, and Level 5 - Exceeded expectations.

Subgroup	Valid Scores	Mean Scale Score	State Mean Scale Score	% Level_1	% Level_2	% Level_3	% Level_4	% Level_5	% Met/ Exceeded Expectation	State % Met/Exceeded Expectation
Schoolwide	89	774	750	2%	3%	18%	51%	26%	76%	53%
White	75	775	757	3%	4%	15%	53%	25%	79%	61%
African American	-	-	730	-	-	-	-	-	-	31%
Hispanic	-	-	735	-	-	-	-	-	-	37%
American Indian	-	-	741	-	-	-	-	-	-	49%
Asian	-	-	778	-	-	-	-	-	-	80%
Two or More Races	-	-	753	-	-	-	-	-	-	55%
Students with Disability	15	745	713	7%	13%	47%	27%	7%	33%	16%
English Language Learners	-	-	701	-	-	-	-	-	-	9%
Economically Disadvantaged Students	-	-	732	-	-	-	-	-	-	34%

**ACADEMIC ACHIEVEMENT**

MORRIS  
CHESTER TWP

GRADE SPAN 06-08

BLACK RIVER MIDDLE SCHOOL  
133 RT. 513 - NORTH ROAD  
CHESTER, NJ 07930

**PARCC MATH - Performance Distribution - Grade - 06**

This table presents the grade level outcomes, as measured by PARCC, in all five performance levels for all subgroups. PARCC consists of five performance levels: Level 1 - Did not yet meet grade-level expectations, Level 2 -Partially met expectations, Level 3 - Approached expectations, Level 4 - Met expectations, and Level 5 - Exceeded expectations.

Subgroup	Valid Scores	Mean Scale Score	State Mean Scale Score	% Level_1	% Level_2	% Level_3	% Level_4	% Level_5	% Met/ Exceeded Expectation	State % Met/Exceeded Expectation
Schoolwide	140	761	743	1%	5%	24%	58%	12%	70%	42%
White	116	761	749	1%	3%	24%	62%	9%	72%	50%
African American	-	-	726	-	-	-	-	-	-	19%
Hispanic	-	-	731	-	-	-	-	-	-	25%
American Indian	-	-	740	-	-	-	-	-	-	35%
Asian	13	779	768	0%	0%	8%	54%	38%	92%	75%
Two or More Races	-	-	745	-	-	-	-	-	-	44%
Students with Disability	28	748	718	4%	7%	36%	46%	7%	54%	15%
English Language Learners	-	-	718	-	-	-	-	-	-	14%
Economically Disadvantaged Students	-	-	729	-	-	-	-	-	-	23%

**ACADEMIC ACHIEVEMENT**

MORRIS  
CHESTER TWP

GRADE SPAN 06-08

BLACK RIVER MIDDLE SCHOOL  
133 RT. 513 - NORTH ROAD  
CHESTER, NJ 07930

**PARCC MATH - Performance Distribution - Grade - 07**

This table presents the grade level outcomes, as measured by PARCC, in all five performance levels for all subgroups. PARCC consists of five performance levels: Level 1 - Did not yet meet grade-level expectations, Level 2 -Partially met expectations, Level 3 - Approached expectations, Level 4 - Met expectations, and Level 5 - Exceeded expectations.

Subgroup	Valid Scores	Mean Scale Score	State Mean Scale Score	% Level_1	% Level_2	% Level_3	% Level_4	% Level_5	% Met/ Exceeded Expectation	State % Met/Exceeded Expectation
Schoolwide	74	753	740	0%	3%	41%	53%	4%	57%	38%
White	65	754	745	0%	2%	40%	54%	5%	58%	46%
African American	-	-	725	-	-	-	-	-	-	17%
Hispanic	-	-	730	-	-	-	-	-	-	23%
American Indian	-	-	734	-	-	-	-	-	-	32%
Asian	-	-	760	-	-	-	-	-	-	68%
Two or More Races	-	-	742	-	-	-	-	-	-	43%
Students with Disability	14	751	715	0%	7%	36%	50%	7%	57%	11%
English Language Learners	-	-	717	-	-	-	-	-	-	11%
Economically Disadvantaged Students	-	-	728	-	-	-	-	-	-	21%

**ACADEMIC ACHIEVEMENT**

MORRIS  
CHESTER TWP

GRADE SPAN 06-08

BLACK RIVER MIDDLE SCHOOL  
133 RT. 513 - NORTH ROAD  
CHESTER, NJ 07930

**PARCC MATH - Performance Distribution - Grade - 08**

This table presents the grade level outcomes, as measured by PARCC, in all five performance levels for all subgroups. PARCC consists of five performance levels: Level 1 - Did not yet meet grade-level expectations, Level 2 -Partially met expectations, Level 3 - Approached expectations, Level 4 - Met expectations, and Level 5 - Exceeded expectations.

Subgroup	Valid Scores	Mean Scale Score	State Mean Scale Score	% Level_1	% Level_2	% Level_3	% Level_4	% Level_5	% Met/ Exceeded Expectation	State % Met/Exceeded Expectation
Schoolwide	29	751	726	10%	3%	31%	55%	0%	55%	24%
White	21	749	732	14%	5%	24%	57%	0%	57%	29%
African American	-	-	715	-	-	-	-	-	-	14%
Hispanic	-	-	721	-	-	-	-	-	-	19%
American Indian	-	-	722	-	-	-	-	-	-	15%
Asian	-	-	744	-	-	-	-	-	-	46%
Two or More Races	-	-	724	-	-	-	-	-	-	24%
Students with Disability	13	747	705	15%	8%	31%	46%	0%	46%	9%
English Language Learners	-	-	706	-	-	-	-	-	-	10%
Economically Disadvantaged Students	-	-	719	-	-	-	-	-	-	17%

**ACADEMIC ACHIEVEMENT**

MORRIS  
CHESTER TWP

GRADE SPAN 06-08

BLACK RIVER MIDDLE SCHOOL  
133 RT. 513 - NORTH ROAD  
CHESTER, NJ 07930

**PARCC ALGEBRA I - Performance Distribution**

This table presents the grade level outcomes, as measured by PARCC, in all five performance levels for all subgroups. PARCC consists of five performance levels: Level 1 - Did not yet meet grade-level expectations, Level 2 -Partially met expectations, Level 3 - Approached expectations, Level 4 - Met expectations, and Level 5 - Exceeded expectations.

Subgroup	Valid Scores	Mean Scale Score	State Mean Scale Score	% Level_1	% Level_2	% Level_3	% Level_4	% Level_5	% Met/ Exceeded Expectation	State % Met/Exceeded Expectation
Schoolwide	63	781	740	2%	2%	5%	78%	14%	92%	40%
White	57	779	746	2%	2%	5%	79%	12%	91%	47%
African American	-	-	722	-	-	-	-	-	-	20%
Hispanic	-	-	725	-	-	-	-	-	-	21%
American Indian	-	-	733	-	-	-	-	-	-	35%
Asian	-	-	769	-	-	-	-	-	-	73%
Two or More Races	-	-	734	-	-	-	-	-	-	35%
Students with Disability	-	-	710	-	-	-	-	-	-	8%
English Language Learners	-	-	710	-	-	-	-	-	-	7%
Economically Disadvantaged Students	-	-	725	-	-	-	-	-	-	21%

**ACADEMIC ACHIEVEMENT**

MORRIS  
CHESTER TWP

GRADE SPAN 06-08

BLACK RIVER MIDDLE SCHOOL  
133 RT. 513 - NORTH ROAD  
CHESTER, NJ 07930

**PARCC GEOMETRY - Performance Distribution**

This table presents the grade level outcomes, as measured by PARCC, in all five performance levels for all subgroups. PARCC consists of five performance levels: Level 1 - Did not yet meet grade-level expectations, Level 2 -Partially met expectations, Level 3 - Approached expectations, Level 4 - Met expectations, and Level 5 - Exceeded expectations.

Subgroup	Valid Scores	Mean Scale Score	State Mean Scale Score	% Level_1	% Level_2	% Level_3	% Level_4	% Level_5	% Met/ Exceeded Expectation	State % Met/Exceeded Expectation
Schoolwide	23	784	728	0%	0%	0%	52%	48%	100%	21%
White	20	783	731	0%	0%	0%	55%	45%	100%	24%
African American	-	-	716	-	-	-	-	-	-	7%
Hispanic	-	-	718	-	-	-	-	-	-	8%
American Indian	-	-	722	-	-	-	-	-	-	12%
Asian	-	-	751	-	-	-	-	-	-	54%
Two or More Races	-	-	724	-	-	-	-	-	-	20%
Students with Disability	-	-	709	-	-	-	-	-	-	4%
English Language Learners	-	-	710	-	-	-	-	-	-	6%
Economically Disadvantaged Students	-	-	718	-	-	-	-	-	-	8%

**ACADEMIC ACHIEVEMENT**

MORRIS  
CHESTER TWP

GRADE SPAN 06-08

BLACK RIVER MIDDLE SCHOOL  
133 RT. 513 - NORTH ROAD  
CHESTER, NJ 07930

**2015 National Assessment Educational Progress (NAEP)**

The National Assessment of Educational Progress (NAEP) is the largest national assessment of what our nation’s students know and can do. NAEP assesses fourth-, eighth-, and twelfth-grade students in subjects such as reading, mathematics, science, and writing. The reporting of NAEP scores on state report cards is a federal mandate. The results of NAEP are also published as the Nation’s Report Card, and are available for the nation, states, and, in some cases, urban districts. The NAEP scores on the report card include grades four and eight 2015 reading and math scores for New Jersey which are the last scores published.

For subgroup outcomes, visit:

- Reading Grade 4 <http://www.nj.gov/education/pr/1415/naep/naep4read.html>
- Reading Grade 8 <http://www.nj.gov/education/pr/1415/naep/naep8read.html>
- Math Grade 4 <http://www.nj.gov/education/pr/1415/naep/naep4math.html>
- Math Grade 8 <http://www.nj.gov/education/pr/1415/naep/naep8math.html>

For more information, visit <http://nces.ed.gov/nationsreportcard/>

**Proficiency Percentages**

Subject	Grade	State/Nation	Below Basic	Basic	Proficient	Advanced
Reading	Grade 4	State (NJ)	25	33	31	12
	Grade 4	Nation	31	33	27	9
	Grade 8	State (NJ)	20	39	35	6
	Grade 8	Nation	24	42	31	4
Math	Grade 4	State (NJ)	14	39	38	9
	Grade 4	Nation	18	42	33	7
	Grade 8	State (NJ)	21	32	30	16
	Grade 8	Nation	29	38	25	8

**ACADEMIC ACHIEVEMENT**

MORRIS  
CHESTER TWP

GRADE SPAN 06-08

27-0820-020  
BLACK RIVER MIDDLE SCHOOL  
133 RT. 513 - NORTH ROAD  
CHESTER, NJ 07930

**NJASK Results - Science Grade Level - 08**

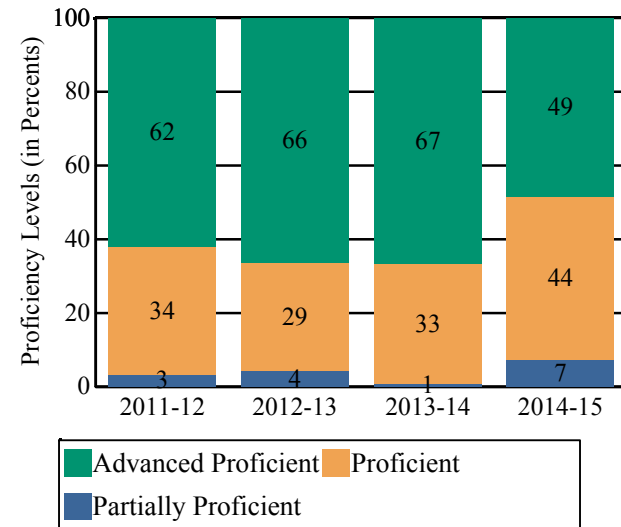
This table presents the grade level proficiency results, as measured by NJASK, in Advanced Proficient, Proficient, and Partially Proficient categories for all appropriate subgroups.

Subgroups	Advanced Proficient	Proficient	Partially Proficient
Schoolwide	49%	44%	7%
White	51%	42%	6%
African American	-	-	-
Hispanic	-	-	-
American Indian	-	-	-
Asian	-	-	-
Two or More Races	-	-	-
Students with Disability	29%	48%	23%
English Language Learners	-	-	-
Economically Disadvantaged Students	-	-	-

Data is presented for subgroups when the count is high enough under ESEA Waiver suppression rules.

**NJASK Proficiency Trends - Science - Grade Level - 08**

This graph presents the grade level outcomes in the categories of Advanced Proficient, Proficient, and Partially Proficient over the last four years.



Students in both elementary and middle schools begin to demonstrate college readiness behaviors long before they even enter high school. Among the behaviors that research has shown to be indicative of successfully graduating high school is regularly attending school. For all elementary and middle schools, this includes the percentage of students that are chronically absent each year, defined as missing more than 10% of possible school days. Also presented is the percentage of students participating in Visual and Performing Arts coursework and Algebra I course outcomes.

**Algebra I Course Enrollment**

This table presents the count of students in this school who were reported in the Algebra I course code in NJSMART and the count of students who took the Algebra I test of PARCC.

Algebra I Enrollment Count	Algebra I PARCC Test Count
151	67

**Algebra I Test Taking**

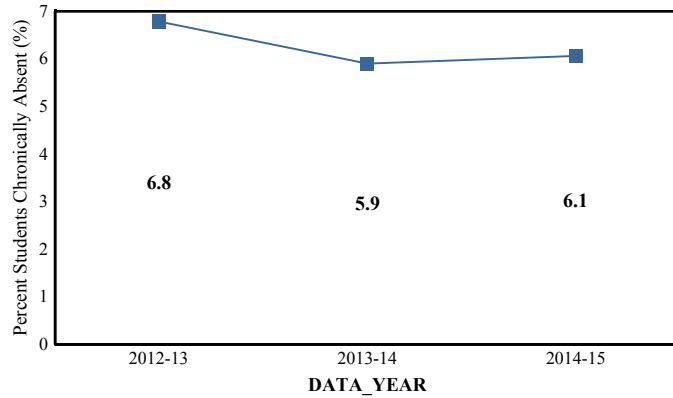
This table presents the percentage of students, as reported in NJSMART, who earned a C or higher in their Algebra I course and the percentage of students who met or exceeded expectation on the Algebra I test of PARCC.

Algebra I Percent C or Better	Algebra I PARCC Percent Met or Exceeded Expectation
100.0%	92.5%

- Data Suppressed to protect the confidentiality of students

### Chronic Absenteeism Trend

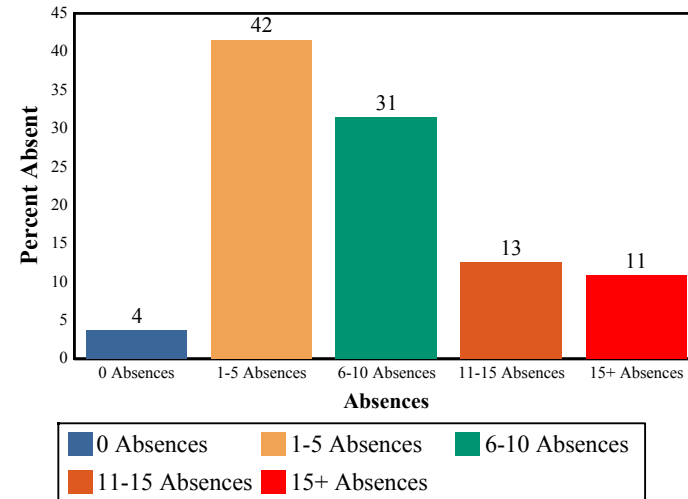
This graph presents the percentage of the enrolled students who were chronically absent for the past three years.



<b>Chronic Absenteeism for 2014-15</b>	<b>6.06%</b>
----------------------------------------	--------------

### Absenteeism

The chart below presents the percentage of students who were absent in each category of absence: 0 absences, 1- 5 absences, 6 - 10 absences, 11 - 15 absences, and more than 15 absences. An absence is defined as being 'not present' and includes the days missed regardless of whether they were determined to be excused or unexcused by the school.



**Visual and Performing Arts**

The chart below contains the percentage of students who were enrolled in at least one Dance, Drama/Theater, Music or Visual Arts class in this school. The last row shows the percentage of students who were enrolled in any Visual and Performing Arts classes in the school.

Percent of Students Enrolled	School	State
Dance	N/R	1.6%
Drama/Theater	N/R	3.9%
Music	98.9%	66.0%
Visual Arts	99.1%	71.1%
<b>Total: All Visual and Performing Arts</b>	99.6%	89.8%

N/R - Data Not Reported

**STUDENT GROWTH**

MORRIS  
CHESTER TWP

BLACK RIVER MIDDLE SCHOOL  
133 RT. 513 - NORTH ROAD  
CHESTER, NJ 07930

GRADE SPAN 06-08

This section of the performance report presents data about student growth, utilizing the Student Growth Percentile Methodology (SGP). SGP creates a measure of how students progressed in grades 4 through 8 in Language Arts Literacy and in grades 4 through 7 in Math when compared to other students with a similar test score history. A short video explaining the methodology can be found here: <http://www.state.nj.us/education/njsmart/performance/>

The below chart consist of five columns with measures. The first column - Schoolwide Performance - presents the schoolwide median growth score in either English Language Arts/Literacy or Mathematics for all students in the school. The second column - Peer Percentile - indicates how the school's growth performance compares to its group of peer schools. The third column - Statewide Percentile - indicates how a school compares to schools across the state. The last column - Met Target? - indicates whether the school's performance met or exceeded the statewide target, which was set to 35.

The fourth row presents the averages of the peer school percentiles, the averages of statewide percentiles, the percentage of statewide targets met.

Student Growth Indicators	Schoolwide Performance	Peer Percentile	Statewide Percentile	Statewide Target	Met Target?
Student Growth on Language Arts	55	55	67	35	YES
Student Growth on Math	67	88	95	35	YES
		72	81		100%

**Student Growth**

This table presents for all students with growth scores the interaction between their performance on PARCC and their growth scores. For example, in the top left cell the percentage of students who are both in Level 1 - Did not yet meet expectations AND also demonstrating low growth is displayed.

**Language Arts**

(Expectations)	GROWTH		
	Low	Typical	High
Did Not Yet Meet	1%	0%	0%
Partially Met	3%	1%	0%
Approached	10%	7%	3%
Met	11%	21%	17%
Exceeded	1%	10%	15%

**Math**

(Expectations)	GROWTH		
	Low	Typical	High
Did Not Yet Meet	1%	1%	0%
Partially Met	2%	2%	1%
Approached	9%	10%	11%
Met	8%	15%	34%
Exceeded	0%	1%	7%

**Low Growth** is defined as an Student Growth Percentile score less than 35.  
**Typical Growth** is defined as an Student Growth Percentile score between 35 and 65.  
**High Growth** is defined as a Student Growth Percentile score higher than 65.

**WITHIN SCHOOL ACHIEVEMENT GAP**

MORRIS  
CHESTER TWP

BLACK RIVER MIDDLE SCHOOL  
133 RT. 513 - NORTH ROAD  
CHESTER, NJ 07930

GRADE SPAN 06-08

This section of the performance report presents data about the achievement gap that exists within a school - as measured by the difference between the students' scale scores at the 25th and 75th percentile in the school, the Interquartile Range (IQR). Taken together with an understanding of the overall and average achievement levels in the school, the IQR furthers an understanding of the range of student outcomes that exist in a school. A school gap smaller than the state gap indicates that the school's range of student outcomes is narrower than the state's while a school gap larger than the state gap indicates that the school's range of student outcomes is broader than the state's.

**Grade Level - 06**

**PARCC Language Arts 25th %ile vs 75th%ile**

This table presents the scale scores associated with students at the bottom (0th percentile), the 25th percentile, the 50th percentile, the 75th percentile and the top (99th percentile) of school's distribution.

Percentile	School Scale Score	State Scale Score
99th	821	850
75th	780	770
50th	765	749
25th	748	726
0th	693	650

	Scale Score Gap - School	Scale Score Gap - State
25th vs 75th Gap	32	44

**Grade Level - 06**

**PARCC MATH 25th %ile vs 75th%ile**

This table presents the scale scores associated with students at the bottom (0th percentile), the 25th percentile, the 50th percentile, the 75th percentile and the top (99th percentile) of school's distribution.

Percentile	School Scale Score	State Scale Score
99th	803	850
75th	777	763
50th	762	742
25th	745	721
0th	693	650

	Scale Score Gap - School	Scale Score Gap - State
25th vs 75th Gap	32	42

**WITHIN SCHOOL ACHIEVEMENT GAP**

MORRIS  
CHESTER TWP

BLACK RIVER MIDDLE SCHOOL  
133 RT. 513 - NORTH ROAD  
CHESTER, NJ 07930

GRADE SPAN 06-08

**Grade Level - 07**

**PARCC Language Arts 25th %ile vs 75th%ile**

This table presents the scale scores associated with students at the bottom (0th percentile), the 25th percentile, the 50th percentile, the 75th percentile and the top (99th percentile) of school's distribution.

Percentile	School Scale Score	State Scale Score
99th	850	850
75th	794	776
50th	775	751
25th	752	724
0th	694	650

	Scale Score Gap - School	Scale Score Gap - State
25th vs 75th Gap	42	52

**Grade Level - 08**

**PARCC Language Arts 25th %ile vs 75th%ile**

This table presents the scale scores associated with students at the bottom (0th percentile), the 25th percentile, the 50th percentile, the 75th percentile and the top (99th percentile) of school's distribution.

Percentile	School Scale Score	State Scale Score
99th	836	850
75th	795	777
50th	779	751
25th	751	723
0th	690	650

	Scale Score Gap - School	Scale Score Gap - State
25th vs 75th Gap	44	54

**Grade Level - 07**

**PARCC MATH 25th %ile vs 75th%ile**

This table presents the scale scores associated with students at the bottom (0th percentile), the 25th percentile, the 50th percentile, the 75th percentile and the top (99th percentile) of school's distribution.

Percentile	School Scale Score	State Scale Score
99th	797	850
75th	765	759
50th	751	740
25th	741	720
0th	711	650

	Scale Score Gap - School	Scale Score Gap - State
25th vs 75th Gap	24	39

**Grade Level - 08**

**PARCC MATH 25th %ile vs 75th%ile**

This table presents the scale scores associated with students at the bottom (0th percentile), the 25th percentile, the 50th percentile, the 75th percentile and the top (99th percentile) of school's distribution.

Percentile	School Scale Score	State Scale Score
99th	794	850
75th	773	748
50th	756	726
25th	735	704
0th	687	650

	Scale Score Gap - School	Scale Score Gap - State
25th vs 75th Gap	38	44

**SCHOOL CLIMATE**

MORRIS  
CHESTER TWP

**Length of School Day**

This table presents the amount of time a school is in session for a typical student on a normal school day.

	School
2014-15	6 Hrs. 45 Mins.

**Student Suspension Rate**

This table presents the percentage of students who were suspended one or more times during the school year.

	School
2014-15	0.0%

State of New Jersey  
2014-15

GRADE SPAN 06-08

27-0820-020  
BLACK RIVER MIDDLE SCHOOL  
133 RT. 513 - NORTH ROAD  
CHESTER, NJ 07930

**Instructional Time**

This table presents the amount of time that a typical student is engaged in instructional activities under the supervision of a certified teacher.

2014-15	School
Full Time	6 Hrs. 15 Mins.
Shared Time	0 Hrs. 0 Mins.

**Student Expulsions**

This table presents the number of students who were expelled from the school and district during the school year.

	School
2014-15	1

**Student to Staff Ratio**

This table presents the count of students per faculty member or administrator in the school. All staff are counted in full-time equivalents.

2014-15	School
Faculty	12
Administrators	464

**SCHOOL PEER GROUP**

**MORRIS  
CHESTER TWP**

**GRADE SPAN 06-08**

**BLACK RIVER MIDDLE SCHOOL  
133 RT. 513 - NORTH ROAD  
CHESTER, NJ 07930**

This table presents the list of peer schools in alphabetical order by county name that was created specifically for this school (highlighted in yellow). Peer schools are drawn from across the state and represent schools that have similar grade configurations and that are educating students of similar demographic characteristics, as measured by enrollment in Free/Reduced Lunch Programs, Limited English Proficiency or Special Education Programs.

<u>COUNTY NAME</u>	<u>DISTRICT NAME</u>	<u>SCHOOL NAME</u>	<u>CDS CODE</u>	<u>GRADES PAN</u>	<u>ECONOMICALLY DISADVANTAGED</u>	<u>ENGLISH LANGUAGE LEARNERS</u>	<u>SPECIAL EDUCATION</u>
BERGEN	HARRINGTON PARK BORO	<b>HARRINGTON PARK SCHOOL DISTRICT</b>	03-2050-050	KG-08	0%	3.4%	11.8%
BERGEN	HAWORTH BORO	<b>HAWORTH PUBLIC SCHOOL</b>	03-2090-050	KG-08	0%	2.5%	10.8%
BERGEN	HILLSDALE BORO	<b>GEORGE G WHITE</b>	03-2180-020	05-08	6.4%	0.2%	19.1%
BERGEN	NORWOOD BORO	<b>NORWOOD PUBLIC SCHOOL</b>	03-3740-020	KG-08	0.2%	2.1%	11.4%
BERGEN	PARAMUS BORO	<b>WEST BROOK MIDDLE SCHOOL</b>	03-3930-060	05-08	6.4%	0.3%	20.6%
BERGEN	RIDGEWOOD VILLAGE	<b>GEORGE WASHINGTON MIDDLE SCHOOL</b>	03-4390-070	06-08	3.7%	0.6%	14.3%
BERGEN	RUTHERFORD BORO	<b>PIERREPONT SCHOOL</b>	03-4600-080	04-08	3.9%	0.4%	13.4%
CHARTERS	PRINCETON CS	<b>PRINCETON CHARTER SCHOOL</b>	80-7540-930	KG-08	1.7%	0%	5.8%
ESSEX	CEDAR GROVE TWP	<b>MEMORIAL MIDDLE SCHOOL</b>	13-0760-058	05-08	2%	0.5%	11.2%
ESSEX	MILLBURN TWP	<b>MILLBURN MIDDLE SCHOOL</b>	13-3190-060	06-08	3%	1.5%	14.9%
ESSEX	WEST ESSEX REGIONAL	<b>WEST ESSEX MIDDLE SCHOOL</b>	13-5630-070	07-08	3.6%	0%	13.6%
HUNTERDON	CALIFON BORO	<b>CALIFON ELEMENTARY</b>	19-0670-030	PK-08	4.6%	0%	16.3%
HUNTERDON	HOLLAND TWP	<b>HOLLAND TOWNSHIP ELEMENTARY SCHOOL</b>	19-2220-060	PK-08	8.4%	0.5%	22.6%
MERCER	ROBBINSVILLE TWP	<b>POND ROAD MIDDLE SCHOOL</b>	21-5510-040	04-08	3.6%	0.2%	11.3%
MIDDLESEX	CRANBURY TWP	<b>CRANBURY SCHOOL</b>	23-0970-030	PK-08	3.7%	0.2%	14.1%
MIDDLESEX	MONROE TWP	<b>MONROE TWP MIDDLE SCHOOL</b>	23-3290-020	06-08	6.1%	0.2%	16.8%
MONMOUTH	HOLMDEL TWP	<b>WILLIAM R. SATZ SCHOOL</b>	25-2230-030	07-08	3.8%	1.1%	15.2%
MONMOUTH	MARLBORO TWP	<b>MARLBORO MEMORIAL MIDDLE SCHOOL</b>	25-3030-048	06-08	3.9%	0%	12.6%
MONMOUTH	MIDDLETOWN TWP	<b>THOMPSON MIDDLE SCHOOL</b>	25-3160-057	06-08	4.1%	0%	15.7%
MONMOUTH	UPPER FREEHOLD REGIONAL	<b>STONEBRIDGE MIDDLE SCHOOL</b>	25-5310-070	05-08	7%	0.2%	20.7%
<b>MORRIS</b>	<b>CHESTER TWP</b>	<b>BLACK RIVER MIDDLE SCHOOL</b>	<b>27-0820-020</b>	<b>06-08</b>	<b>4.3%</b>	<b>2.4%</b>	<b>20.3%</b>
MORRIS	HANOVER TWP	<b>MEMORIAL JUNIOR SCHOOL</b>	27-2000-040	06-08	2.2%	1.2%	10.6%
MORRIS	MONTVILLE TWP	<b>ROBERT R LAZAR MIDDLE SCHOOL</b>	27-3340-030	06-08	3.8%	1.8%	16.4%

**SCHOOL PEER GROUP**

**MORRIS  
CHESTER TWP**

**BLACK RIVER MIDDLE SCHOOL  
133 RT. 513 - NORTH ROAD  
CHESTER, NJ 07930**

**GRADE SPAN 06-08**

MUNICIPALITY	SCHOOL	SCHOOL ID	GRADE SPAN	PERCENTAGE 1	PERCENTAGE 2	PERCENTAGE 3
MORRIS	MORRIS PLAINS BORO	<b>MORRIS PLAINS BOROUGH SCHOOL</b>	27-3380-020 03-08	3.2%	1%	16.1%
OCEAN	BAY HEAD BORO	<b>BAY HEAD ELEMENTARY</b>	29-0210-020 KG-08	0%	0%	5.4%
SOMERSET	BRANCBURG TWP	<b>BRANCBURG CENTRAL MIDDLE SCHOOL</b>	35-0510-020 06-08	5.1%	0.9%	17.7%
SUSSEX	SPARTA TWP	<b>SPARTA MIDDLE SCHOOL</b>	37-4960-057 06-08	4.9%	0.2%	16.1%
UNION	BERKELEY HEIGHTS TWP	<b>COLUMBIA MIDDLE SCHOOL</b>	39-0310-030 06-08	2.2%	0.3%	11.7%
UNION	MOUNTAINSIDE BORO	<b>DEERFIELD ELEMENTARY SCHOOL</b>	39-3470-030 03-08	2.7%	0.2%	10.3%
UNION	SCOTCH PLAINS-FANWOOD REG	<b>TERRILL MIDDLE SCHOOL</b>	39-4670-065 05-08	3.9%	0%	14.1%
UNION	WESTFIELD TOWN	<b>THOMAS EDISON INTERMEDIATE SCHOOL</b>	39-5730-070 06-08	4.2%	1.2%	18.4%



# State of New Jersey

2014-15

27-0820-030

BRAGG ELEMENTARY SCHOOL

250 ROUTE 24

CHESTER, NJ 07930

## OVERVIEW

MORRIS

CHESTER TWP

GRADE SPAN 03-05

The New Jersey Department of Education (NJDOE) is pleased to present these annual reports of School Performance. These reports are designed to inform parents, educators and communities about how well a school is performing and preparing its students for college and careers.

In particular, the School Performance Reports seek to:

- **Focus** attention on metrics that are indicative of college and career readiness.
- **Benchmark** a school's performance against other peer schools that are educating similar students, against statewide outcomes, and against state targets to illuminate and build upon a school's strengths and identify areas for improvement.
- **Improve** educational outcomes for students by providing both longitudinal and growth data so that progress can be measured as part of an individual school's efforts to engage in continuous improvement.

While the New Jersey School Performance Reports seek to bring more information to educators and stakeholders about the performance of schools, they do not seek to distill the performance of schools into a single metric, a single score, or a simplified conclusion. Instead, the intention is that educators and stakeholders will engage in deep, lengthy conversations about the full range of the data presented. As educators know well, measuring school performance is both an art and a science. While the School Performance Report brings attention to important student outcomes, NJDOE does not collect data about other essential elements of a school, such as the provision of opportunities to participate and excel in extracurricular activities; the development of non-cognitive skills like time management and perseverance; the pervasiveness of a positive school culture or climate; or the attainment of other employability and technical skills, as many of these data are beyond both the capacity and resources of schools to measure and collect well.

To learn more about New Jersey's school accountability system, please visit: <http://www.nj.gov/education/educators/>.

**DEMOGRAPHIC INFORMATION**

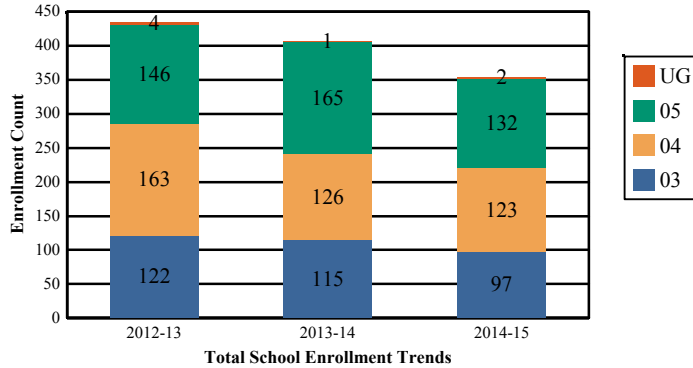
MORRIS  
CHESTER TWP

GRADE SPAN 03-05

27-0820-030  
BRAGG ELEMENTARY SCHOOL  
250 ROUTE 24  
CHESTER, NJ 07930

**Enrollment by Grade**

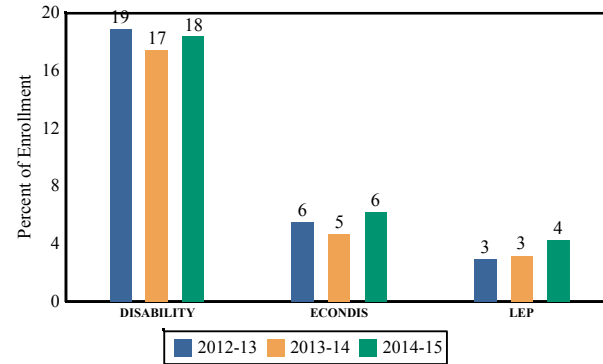
This graph presents the count of students who were 'on roll' by grade in October of each school year.



Note: "UG" represents the count of students who are 'on roll' in this school but who are educated in ungraded classrooms, meaning that the classrooms may contain students from multiple grade levels.

**Enrollment Trends by Program Participation**

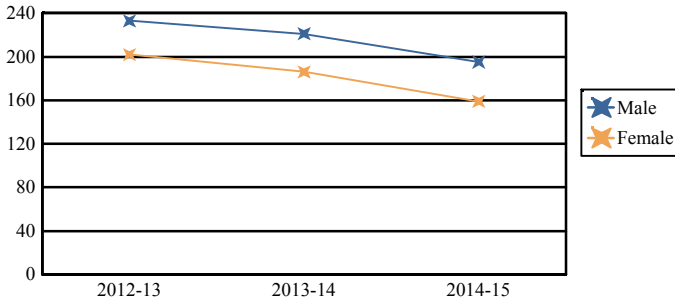
This graph presents the percentages of students by program participation who were 'on roll' in October of each school year.



Total School Enrollment	
2012-13	435
2013-14	407
2014-15	354

**Enrollment by Gender**

This graph presents the count of students by gender who were 'on roll' in October of each school year.

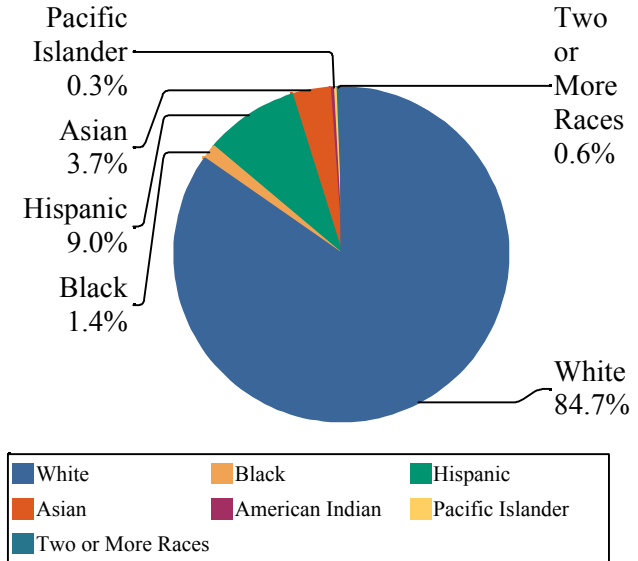


	Male	Female
2012-13	233	202
2013-14	221	186
2014-15	195	159

Current Year Enrollment by Program Participation		
2014-15	Count of Students	% of Enrollment
Students with Disability	65	18%
Economically Disadvantaged Students	22	6.2%
English Language Learners	15	4.2%

**Enrollment by Ethnic/Racial Subgroup**

This graph presents the percentages of enrollment for each subgroup defined by the No Child Left Behind Act of 2001.



**Language Diversity**

This table presents the percentage of students who primarily speak each language in their home.

2014-15	Percent
English	96.1%
Spanish	3.6%
Hindi	0.3%

**ACADEMIC ACHIEVEMENT**

MORRIS

CHESTER TWP

GRADE SPAN 03-05

The Academic Achievement section measures the content knowledge that students have in English Language Arts/Literacy (ELA/L) and Math as demonstrated in the 2014-2015 *Partnership for Assessment of Readiness for College and Careers* (PARCC) assessments. The below chart consist of three columns. The first column - Schoolwide Performance - includes the percentage of students in ELA/L and Math who met or exceeded grade level expectations. The middle column - Peer School Percentile - indicates how the school's outcomes compared to its peers. The last column - Statewide Percentile - indicates how the school's outcomes compared to schools across the state.

Academic Achievement Indicators	Schoolwide Performance	Peer Percentile	State Percentile
English Language Arts/Literacy Met or Exceeded Expectation	68%	42	78
Math Met or Exceeded Expectation	59%		

**ESEA Waiver - English Language Arts/Literacy**

This table presents, for each subgroup in the school, the total number of valid test scores, the percentage of students who met or exceeded expectations, the assessment participation goal, and the participation rate. The participation goal is established as 95% by the United States Department of Education.

Subgroups	Valid Scores	% Meeting Standards	Participation Goal	Participation Rate	Met Participation?
Schoolwide	303	67.6%	95%	90.2%	YES*
White	257	71.2%	95%	89.4%	YES*
African American	-	-	--	--	--
Hispanic	-	-	--	--	--
American Indian	-	-	--	--	--
Asian	-	-	--	--	--
Two or More Races	-	-	--	--	--
Students with Disability	54	42.6%	95%	88.9%	YES*
English Language Learners	-	-	--	--	--
Economically Disadvantaged Students	-	-	--	--	--

YES\* = Met Participation Rate (Participation Averaging applied)

Data is presented for subgroups when the count is high enough under ESEA Waiver suppression rules.

**ACADEMIC ACHIEVEMENT**

MORRIS

CHESTER TWP

GRADE SPAN 03-05

**ESEA Waiver - Math**

This table presents, for each subgroup in the school, the total number of valid test scores, the percentage of students who met or exceeded expectations, the assessment participation goal, and the participation rate. The participation goal is established as 95% by the United States Department of Education.

Subgroups	Valid Scores	% Meeting Standards	Participation Goal	Participation Rate	Met Participation?
Schoolwide	304	59.2%	95%	90.4%	YES*
White	258	61.3%	95%	89.7%	YES*
African American	-	-	--	--	--
Hispanic	-	-	--	--	--
American Indian	-	-	--	--	--
Asian	-	-	--	--	--
Two or More Races	-	-	--	--	--
Students with Disability	55	36.4%	95%	90.5%	YES*
English Learner Students	-	-	--	--	--
Economically Disadvantaged Students	-	-	--	--	--

**YES\* = Met Participation Rate (Participation Averaging applied)**

Data is presented for subgroups when the count is high enough under ESEA Waiver suppression rules.

**ACADEMIC ACHIEVEMENT**

MORRIS

CHESTER TWP

GRADE SPAN 03-05

**PARCC Performance Level**

The PARCC assesses how well students have learned grade-level material in English Language Arts/Literacy (ELA/L) and Math. The tests include questions that measure students' fundamental skills and knowledge, and require them to think critically, solve problems and support or explain their answers.

The PARCC reports students' overall scale scores that range from 650 to 850. To determine whether students have met academic expectations for their grade level/course in ELA/L and Math, students' overall scale scores are categorized into five Performance Levels. Students performing at levels 4 and 5 (met or exceeded expectations) have demonstrated readiness for the next grade level/course, and are on track for college and careers.

Five Performance Levels				
<b>Level 1:</b> Did Not Yet Meet Expectations <i>(Min. 650)</i>	<b>Level 2:</b> Partially Met Expectations	<b>Level 3:</b> Approached Expectations	<b>Level 4:</b> Met Expectations	<b>Level 5:</b> Exceeded Expectations <i>(Max. 850)</i>

PARCC ELA Performance Distribution - Grade - 03

This table presents the grade level outcomes, as measured by PARCC, in all five performance levels for all subgroups. PARCC consists of five performance levels: Level 1 - Did not yet meet grade-level expectations, Level 2 -Partially met expectations, Level 3 - Approached expectations, Level 4 - Met expectations, and Level 5 - Exceeded expectations.

Subgroup	Valid Scores	Mean Scale Score	State Mean Scale Score	% Level_1	% Level_2	% Level_3	% Level_4	% Level_5	% Met/ Exceeded Expectation	State % Met/Exceeded Expectation
Schoolwide	89	755	744	2%	18%	22%	51%	7%	57%	44%
White	76	758	753	0%	18%	24%	50%	8%	58%	55%
African American	-	-	725	-	-	-	-	-	-	26%
Hispanic	-	-	727	-	-	-	-	-	-	26%
American Indian	-	-	738	-	-	-	-	-	-	40%
Asian	-	-	769	-	-	-	-	-	-	70%
Two or More Races	-	-	751	-	-	-	-	-	-	53%
Students with Disability	15	742	718	0%	40%	27%	33%	0%	33%	24%
English Language Learners	-	-	709	-	-	-	-	-	-	11%
Economically Disadvantaged Students	-	-	724	-	-	-	-	-	-	24%

**ACADEMIC ACHIEVEMENT**

MORRIS  
CHESTER TWP

BRAGG ELEMENTARY SCHOOL  
250 ROUTE 24  
CHESTER, NJ 07930

GRADE SPAN 03-05

**PARCC ELA Performance Distribution - Grade - 04**

This table presents the grade level outcomes, as measured by PARCC, in all five performance levels for all subgroups. PARCC consists of five performance levels: Level 1 - Did not yet meet grade-level expectations, Level 2 -Partially met expectations, Level 3 - Approached expectations, Level 4 - Met expectations, and Level 5 - Exceeded expectations.

Subgroup	Valid Scores	Mean Scale Score	State Mean Scale Score	% Level_1	% Level_2	% Level_3	% Level_4	% Level_5	% Met/Exceeded Expectation	State % Met/Exceeded Expectation
Schoolwide	106	765	751	1%	7%	17%	59%	16%	75%	52%
White	92	766	758	1%	3%	18%	61%	16%	77%	63%
African American	-	-	733	-	-	-	-	-	-	30%
Hispanic	-	-	737	-	-	-	-	-	-	35%
American Indian	-	-	746	-	-	-	-	-	-	52%
Asian	-	-	773	-	-	-	-	-	-	78%
Two or More Races	-	-	760	-	-	-	-	-	-	62%
Students with Disability	21	758	725	0%	14%	24%	52%	10%	62%	25%
English Language Learners	-	-	717	-	-	-	-	-	-	15%
Economically Disadvantaged Students	-	-	734	-	-	-	-	-	-	31%

**ACADEMIC ACHIEVEMENT**

**BRAGG ELEMENTARY SCHOOL**  
250 ROUTE 24  
CHESTER, NJ 07930

**MORRIS**  
**CHESTER TWP**

**GRADE SPAN 03-05**

**PARCC ELA Performance Distribution - Grade - 05**

This table presents the grade level outcomes, as measured by PARCC, in all five performance levels for all subgroups. PARCC consists of five performance levels: Level 1 - Did not yet meet grade-level expectations, Level 2 -Partially met expectations, Level 3 - Approached expectations, Level 4 - Met expectations, and Level 5 - Exceeded expectations.

Subgroup	Valid Scores	Mean Scale Score	State Mean Scale Score	% Level_1	% Level_2	% Level_3	% Level_4	% Level_5	% Met/ Exceeded Expectation	State % Met/Exceeded Expectation
Schoolwide	108	764	751	2%	8%	21%	56%	13%	69%	53%
White	89	768	757	1%	7%	16%	63%	13%	76%	62%
African American	-	-	734	-	-	-	-	-	-	31%
Hispanic	13	744	737	0%	23%	54%	23%	0%	23%	35%
American Indian	-	-	746	-	-	-	-	-	-	45%
Asian	-	-	771	-	-	-	-	-	-	77%
Two or More Races	-	-	758	-	-	-	-	-	-	61%
Students with Disability	18	735	723	11%	11%	50%	22%	6%	28%	21%
English Language Learners	-	-	717	-	-	-	-	-	-	15%
Economically Disadvantaged Students	-	-	734	-	-	-	-	-	-	31%

**ACADEMIC ACHIEVEMENT**

**BRAGG ELEMENTARY SCHOOL**  
250 ROUTE 24  
CHESTER, NJ 07930

**MORRIS**  
**CHESTER TWP**

**GRADE SPAN 03-05**

**PARCC MATH - Performance Distribution - Grade - 03**

This table presents the grade level outcomes, as measured by PARCC, in all five performance levels for all subgroups. PARCC consists of five performance levels: Level 1 - Did not yet meet grade-level expectations, Level 2 -Partially met expectations, Level 3 - Approached expectations, Level 4 - Met expectations, and Level 5 - Exceeded expectations.

Subgroup	Valid Scores	Mean Scale Score	State Mean Scale Score	% Level_1	% Level_2	% Level_3	% Level_4	% Level_5	% Met/ Exceeded Expectation	State % Met/Exceeded Expectation
Schoolwide	89	755	746	3%	12%	24%	51%	10%	61%	46%
White	76	756	752	3%	11%	25%	51%	11%	62%	56%
African American	-	-	728	-	-	-	-	-	-	25%
Hispanic	-	-	733	-	-	-	-	-	-	28%
American Indian	-	-	742	-	-	-	-	-	-	41%
Asian	-	-	772	-	-	-	-	-	-	77%
Two or More Races	-	-	751	-	-	-	-	-	-	54%
Students with Disability	15	738	727	13%	27%	27%	20%	13%	33%	27%
English Language Learners	-	-	724	-	-	-	-	-	-	17%
Economically Disadvantaged Students	-	-	730	-	-	-	-	-	-	26%

**ACADEMIC ACHIEVEMENT**

MORRIS  
CHESTER TWP

GRADE SPAN 03-05

BRAGG ELEMENTARY SCHOOL  
250 ROUTE 24  
CHESTER, NJ 07930

**PARCC MATH - Performance Distribution - Grade - 04**

This table presents the grade level outcomes, as measured by PARCC, in all five performance levels for all subgroups. PARCC consists of five performance levels: Level 1 - Did not yet meet grade-level expectations, Level 2 -Partially met expectations, Level 3 - Approached expectations, Level 4 - Met expectations, and Level 5 - Exceeded expectations.

Subgroup	Valid Scores	Mean Scale Score	State Mean Scale Score	% Level_1	% Level_2	% Level_3	% Level_4	% Level_5	% Met/ Exceeded Expectation	State % Met/Exceeded Expectation
Schoolwide	107	757	744	0%	9%	30%	55%	6%	61%	42%
White	93	758	749	0%	5%	33%	56%	5%	61%	50%
African American	-	-	727	-	-	-	-	-	-	20%
Hispanic	-	-	732	-	-	-	-	-	-	26%
American Indian	-	-	740	-	-	-	-	-	-	40%
Asian	-	-	769	-	-	-	-	-	-	75%
Two or More Races	-	-	750	-	-	-	-	-	-	52%
Students with Disability	22	749	724	0%	23%	23%	50%	5%	55%	21%
English Language Learners	-	-	722	-	-	-	-	-	-	15%
Economically Disadvantaged Students	-	-	730	-	-	-	-	-	-	23%

**ACADEMIC ACHIEVEMENT**

**BRAGG ELEMENTARY SCHOOL**  
250 ROUTE 24  
CHESTER, NJ 07930

**MORRIS**  
**CHESTER TWP**

**GRADE SPAN 03-05**

**PARCC MATH - Performance Distribution - Grade - 05**

This table presents the grade level outcomes, as measured by PARCC, in all five performance levels for all subgroups. PARCC consists of five performance levels: Level 1 - Did not yet meet grade-level expectations, Level 2 -Partially met expectations, Level 3 - Approached expectations, Level 4 - Met expectations, and Level 5 - Exceeded expectations.

Subgroup	Valid Scores	Mean Scale Score	State Mean Scale Score	% Level_1	% Level_2	% Level_3	% Level_4	% Level_5	% Met/ Exceeded Expectation	State % Met/Exceeded Expectation
Schoolwide	108	760	744	0%	9%	34%	42%	15%	56%	42%
White	89	762	749	0%	8%	31%	45%	16%	61%	49%
African American	-	-	728	-	-	-	-	-	-	21%
Hispanic	13	744	733	0%	15%	54%	23%	8%	31%	26%
American Indian	-	-	745	-	-	-	-	-	-	46%
Asian	-	-	768	-	-	-	-	-	-	74%
Two or More Races	-	-	749	-	-	-	-	-	-	50%
Students with Disability	18	733	724	0%	33%	50%	17%	0%	17%	19%
English Language Learners	-	-	724	-	-	-	-	-	-	17%
Economically Disadvantaged Students	-	-	731	-	-	-	-	-	-	23%

**2015 National Assessment Educational Progress (NAEP)**

The National Assessment of Educational Progress (NAEP) is the largest national assessment of what our nation's students know and can do. NAEP assesses fourth-, eighth-, and twelfth-grade students in subjects such as reading, mathematics, science, and writing. The reporting of NAEP scores on state report cards is a federal mandate. The results of NAEP are also published as the Nation's Report Card, and are available for the nation, states, and, in some cases, urban districts. The NAEP scores on the report card include grades four and eight 2015 reading and math scores for New Jersey which are the last scores published.

For subgroup outcomes, visit:

- Reading Grade 4 <http://www.nj.gov/education/pr/1415/naep/naep4read.html>
- Reading Grade 8 <http://www.nj.gov/education/pr/1415/naep/naep8read.html>
- Math Grade 4 <http://www.nj.gov/education/pr/1415/naep/naep4math.html>
- Math Grade 8 <http://www.nj.gov/education/pr/1415/naep/naep8math.html>

For more information, visit <http://nces.ed.gov/nationsreportcard/>

**Proficiency Percentages**

Subject	Grade	State/Nation	Below Basic	Basic	Proficient	Advanced
Reading	Grade 4	State (NJ)	25	33	31	12
	Grade 4	Nation	31	33	27	9
	Grade 8	State (NJ)	20	39	35	6
	Grade 8	Nation	24	42	31	4
Math	Grade 4	State (NJ)	14	39	38	9
	Grade 4	Nation	18	42	33	7
	Grade 8	State (NJ)	21	32	30	16
	Grade 8	Nation	29	38	25	8

**ACADEMIC ACHIEVEMENT**

MORRIS  
CHESTER TWP

GRADE SPAN 03-05

**NJASK Results - Science Grade Level - 04**

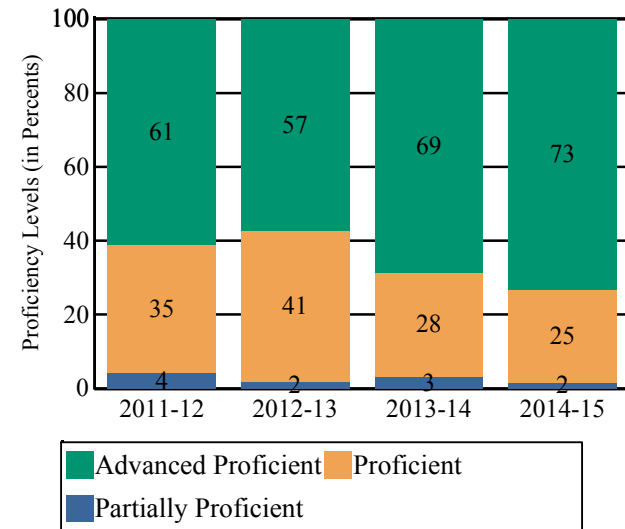
This table presents the grade level proficiency results, as measured by NJASK, in Advanced Proficient, Proficient, and Partially Proficient categories for all appropriate subgroups.

Subgroups	Advanced Proficient	Proficient	Partially Proficient
Schoolwide	73%	25%	2%
White	76%	24%	0%
African American	-	-	-
Hispanic	-	-	-
American Indian	-	-	-
Asian	-	-	-
Two or More Races	-	-	-
Students with Disability	58%	33%	8%
English Language Learners	-	-	-
Economically Disadvantaged Students	-	-	-

Data is presented for subgroups when the count is high enough under ESEA Waiver suppression rules.

**NJASK Proficiency Trends - Science - Grade Level - 04**

This graph presents the grade level outcomes in the categories of Advanced Proficient, Proficient, and Partially Proficient over the last four years.



**COLLEGE AND CAREER READINESS**

MORRIS  
CHESTER TWP

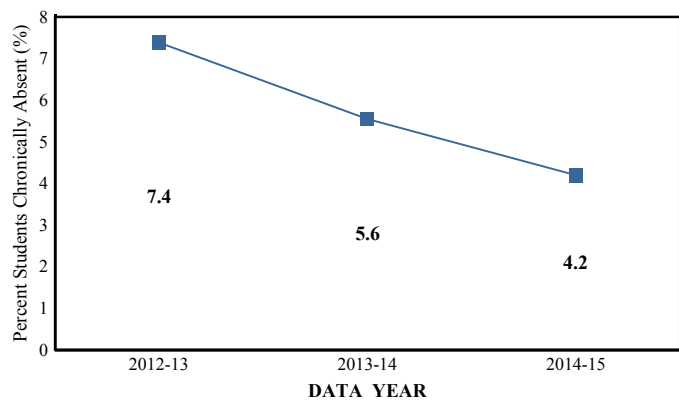
GRADE SPAN 03-05

27-0820-030  
BRAGG ELEMENTARY SCHOOL  
250 ROUTE 24  
CHESTER, NJ 07930

Students in both elementary and middle schools begin to demonstrate college readiness behaviors long before they even enter high school. Among the behaviors that research has shown to be indicative of successfully graduating high school is regularly attending school. For all elementary schools, this includes the percentage of students that are chronically absent each year, defined as missing more than 10% of possible school days.

**Chronic Absenteeism Trend**

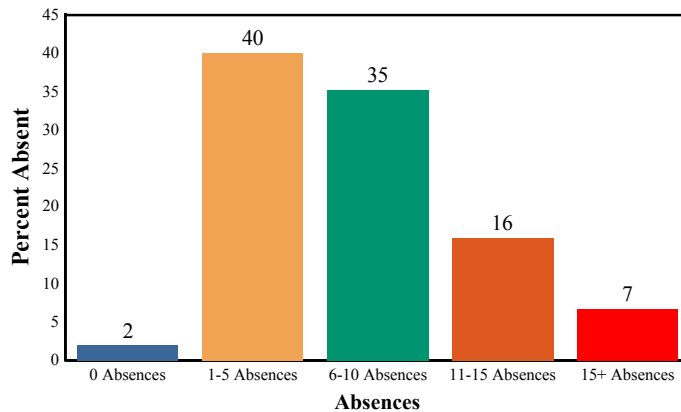
This graph presents the percentage of the enrolled students who were chronically absent for the past three years.



<b>Chronic Absenteeism for 2014-15</b>	<b>4.20%</b>
----------------------------------------	--------------

**Absenteeism**

The chart below presents the percentage of students who were absent in each category of absence: 0 absences, 1- 5 absences, 6 - 10 absences, 11 - 15 absences, and more than 15 absences. An absence is defined as being ‘not present’ and includes the days missed regardless of whether they were determined to be excused or unexcused by the school.



0 Absences	1-5 Absences	6-10 Absences
11-15 Absences	15+ Absences	

**STUDENT GROWTH**

MORRIS

GRADE SPAN 03-05

CHESTER TWP

This section of the performance report presents data about student growth, utilizing the Student Growth Percentile Methodology (SGP). SGP creates a measure of how students progressed in grades 4 through 8 in Language Arts Literacy and in grades 4 through 7 in Math when compared to other students with a similar test score history. A short video explaining the methodology can be found here: <http://www.state.nj.us/education/njsmart/performance/>

The below chart consist of five columns with measures. The first column - Schoolwide Performance - presents the schoolwide median growth score in either English Language Arts/Literacy or Mathematics for all students in the school. The second column - Peer Percentile - indicates how the school's growth performance compares to its group of peer schools. The third column - Statewide Percentile - indicates how a school compares to schools across the state. The last column - Met Target? - indicates whether the school's performance met or exceeded the statewide target, which was set to 35.

The fourth row presents the averages of the peer school percentiles, the averages of statewide percentiles, the percentage of statewide targets met.

Student Growth Indicators	Schoolwide Performance	Peer Percentile	Statewide Percentile	Statewide Target	Met Target?
Student Growth on Language Arts	61	50	80	35	YES
Student Growth on Math	62	65	79	35	YES
		58	80		100%

**Student Growth**

This table presents for all students with growth scores the interaction between their performance on PARCC and their growth scores. For example, in the top left cell the percentage of students who are both in Level 1 - Did not yet meet expectations AND also demonstrating low growth is displayed.

**Language Arts**

(Expectations)	GROWTH		
	Low	Typical	High
Did Not Yet Meet	1%	0%	0%
Partially Met	5%	2%	1%
Approached	9%	5%	5%
Met	10%	22%	25%
Exceeded	0%	2%	13%

**Math**

(Expectations)	GROWTH		
	Low	Typical	High
Did Not Yet Meet	0%	0%	0%
Partially Met	5%	3%	2%
Approached	10%	13%	10%
Met	8%	15%	24%
Exceeded	0%	1%	9%

**Low Growth** is defined as an **Student Growth Percentile** score less than 35.

**Typical Growth** is defined as an **Student Growth Percentile** score between 35 and 65.

**High Growth** is defined as a **Student Growth Percentile** score higher than 65.

**WITHIN SCHOOL ACHIEVEMENT GAP**

MORRIS

GRADE SPAN 03-05

CHESTER TWP

This section of the performance report presents data about the achievement gap that exists within a school - as measured by the difference between the students' scale scores at the 25th and 75th percentile in the school, the Interquartile Range (IQR). Taken together with an understanding of the overall and average achievement levels in the school, the IQR furthers an understanding of the range of student outcomes that exist in a school. A school gap smaller than the state gap indicates that the school's range of student outcomes is narrower than the state's while a school gap larger than the state gap indicates that the school's range of student outcomes is broader than the state's.

**Grade Level - 03**

**Grade Level - 03**

**PARCC Language Arts 25th %ile vs 75th%ile**

**PARCC MATH 25th %ile vs 75th%ile**

This table presents the scale scores associated with students at the bottom (0th percentile), the 25th percentile, the 50th percentile, the 75th percentile and the top (99th percentile) of school's distribution.

This table presents the scale scores associated with students at the bottom (0th percentile), the 25th percentile, the 50th percentile, the 75th percentile and the top (99th percentile) of school's distribution.

Percentile	School Scale Score	State Scale Score
99th	820	850
75th	777	770
50th	756	743
25th	732	715
0th	688	650

Percentile	School Scale Score	State Scale Score
99th	810	850
75th	776	767
50th	757	745
25th	737	722
0th	684	650

	Scale Score Gap - School	Scale Score Gap - State
25th vs 75th Gap	45	55

	Scale Score Gap - School	Scale Score Gap - State
25th vs 75th Gap	39	45

**WITHIN SCHOOL ACHIEVEMENT GAP**

MORRIS

CHESTER TWP

GRADE SPAN 03-05

**Grade Level - 04**

**PARCC Language Arts 25th %ile vs 75th%ile**

This table presents the scale scores associated with students at the bottom (0th percentile), the 25th percentile, the 50th percentile, the 75th percentile and the top (99th percentile) of school's distribution.

Percentile	School Scale Score	State Scale Score
99th	838	850
75th	786	773
50th	765	750
25th	751	728
0th	699	650

	Scale Score Gap - School	Scale Score Gap - State
25th vs 75th Gap	35	45

**Grade Level - 05**

**PARCC Language Arts 25th %ile vs 75th%ile**

This table presents the scale scores associated with students at the bottom (0th percentile), the 25th percentile, the 50th percentile, the 75th percentile and the top (99th percentile) of school's distribution.

Percentile	School Scale Score	State Scale Score
99th	839	850
75th	783	773
50th	762	751
25th	746	728
0th	692	650

	Scale Score Gap - School	Scale Score Gap - State
25th vs 75th Gap	37	45

**Grade Level - 04**

**PARCC MATH 25th %ile vs 75th%ile**

This table presents the scale scores associated with students at the bottom (0th percentile), the 25th percentile, the 50th percentile, the 75th percentile and the top (99th percentile) of school's distribution.

Percentile	School Scale Score	State Scale Score
99th	805	850
75th	773	764
50th	758	742
25th	742	721
0th	710	650

	Scale Score Gap - School	Scale Score Gap - State
25th vs 75th Gap	31	43

**Grade Level - 05**

**PARCC MATH 25th %ile vs 75th%ile**

This table presents the scale scores associated with students at the bottom (0th percentile), the 25th percentile, the 50th percentile, the 75th percentile and the top (99th percentile) of school's distribution.

Percentile	School Scale Score	State Scale Score
99th	828	850
75th	778	763
50th	757	743
25th	737	723
0th	706	650

	Scale Score Gap - School	Scale Score Gap - State
25th vs 75th Gap	41	40

**SCHOOL CLIMATE**

MORRIS

CHESTER TWP

GRADE SPAN 03-05

**Length of School Day**

This table presents the amount of time a school is in session for a typical student on a normal school day.

	School
2014-15	6 Hrs. 30 Mins.

**Student Suspension Rate**

This table presents the percentage of students who were suspended one or more times during the school year.

	School
2014-15	0.0%

**Instructional Time**

This table presents the amount of time that a typical student is engaged in instructional activities under the supervision of a certified teacher.

2014-15	School
Full Time	5 Hrs. 40 Mins.
Shared Time	0 Hrs. 0 Mins.

**Student Expulsions**

This table presents the number of students who were expelled from the school and district during the school year.

	School
2014-15	0

**Student to Staff Ratio**

This table presents the count of students per faculty member or administrator in the school. All staff are counted in full-time equivalents.

2014-15	School
Faculty	9
Administrators	354

**SCHOOL PEER GROUP**

**MORRIS  
CHESTER TWP**

**BRAGG ELEMENTARY SCHOOL  
250 ROUTE 24  
CHESTER, NJ 07930**

**GRADE SPAN 03-05**

This table presents the list of peer schools in alphabetical order by county name that was created specifically for this school (highlighted in yellow). Peer schools are drawn from across the state and represent schools that have similar grade configurations and that are educating students of similar demographic characteristics, as measured by enrollment in Free/Reduced Lunch Programs, Limited English Proficiency or Special Education Programs.

<u>COUNTY NAME</u>	<u>DISTRICT NAME</u>	<u>SCHOOL NAME</u>	<u>CDS CODE</u>	<u>GRADES PAN</u>	<u>ECONOMICALLY DISADVANTAGED</u>	<u>ENGLISH LANGUAGE LEARNERS</u>	<u>SPECIAL EDUCATION</u>
BERGEN	MIDLAND PARK BORO	HIGHLAND ELEMENTARY SCHOOL	03-3170-070	03-06	3.4%	1%	8.2%
BERGEN	OAKLAND BORO	MANITO ELEMENTARY SCHOOL	03-3760-060	KG-05	3.5%	0.7%	15.1%
BERGEN	PARAMUS BORO	MIDLAND ELEMENTARY SCHOOL	03-3930-090	KG-04	8%	6.3%	18.9%
BERGEN	RAMSEY BORO	MARY A. HUBBARD ELEMENTARY SCHOOL	03-4310-070	KG-03	5.2%	3.1%	5.4%
BURLINGTON	EVESHAM TWP	FRANCES DEMASI ELEMENTARY SCHOOL	05-1420-030	KG-05	7.5%	6.8%	14%
BURLINGTON	MEDFORD TWP	CRANBERRY PINES ELEMENTARY	05-3080-040	KG-05	3.7%	0%	12%
BURLINGTON	MEDFORD TWP	TAUNTON FORGE ELEMENTARY SCHOOL	05-3080-070	KG-05	4.1%	0.3%	14.9%
ESSEX	FAIRFIELD TWP	CHURCHILL	13-1465-030	04-06	3.9%	0.7%	12.1%
ESSEX	ROSELAND BORO	LESTER C NOECKER	13-4530-020	PK-06	4.8%	1.6%	14%
MERCER	HOPEWELL VALLEY REGIONAL	BEAR TAVERN ELEMENTARY SCHOOL	21-2280-035	PK-05	3.6%	1.3%	15.4%
MERCER	HOPEWELL VALLEY REGIONAL	STONY BROOK ELEMENTARY SCHOOL	21-2280-065	KG-05	4.1%	0.7%	15.6%
MERCER	ROBBINSVILLE TWP	SHARON SCHOOL	21-5510-050	PK-03	3.7%	1.4%	10.1%
MIDDLESEX	MONROE TWP	OAK TREE ELEMENTARY SCHOOL	23-3290-060	PK-03	4.6%	1.8%	7.6%
MONMOUTH	MARLBORO TWP	FRANK DEFINO CENTRAL ELEMENTARY SCHOOL	25-3030-030	01-05	4.6%	2.6%	14.6%
MONMOUTH	MIDDLETOWN TWP	FAIRVIEW ELEMENTARY SCHOOL	25-3160-090	KG-05	6.6%	6.2%	9.2%
MONMOUTH	MIDDLETOWN TWP	NUT SWAMP ELEMENTARY SCHOOL	25-3160-145	KG-05	3%	0.5%	9.9%
MONMOUTH	WALL TWP	ALLENWOOD ELEMENTARY SCHOOL	25-5420-060	KG-05	3.7%	0%	21.8%
<b>MORRIS</b>	<b>CHESTER TWP</b>	<b>BRAGG ELEMENTARY SCHOOL</b>	<b>27-0820-030</b>	<b>03-05</b>	<b>6.2%</b>	<b>4.2%</b>	<b>18.4%</b>
MORRIS	DENVILLE TWP	LAKEVIEW ELEMENTARY SCHOOL	27-1090-050	PK-05	3.6%	0.6%	14.8%
MORRIS	KINNELON BORO	STONYBROOK ELEMENTARY SCHOOL	27-2460-070	KG-05	3.5%	1%	17.5%
MORRIS	MONTVILLE TWP	VALLEY VIEW SCHOOL	27-3340-055	KG-05	3.8%	1%	20%
MORRIS	PARSIPPANY-TROY HILLS TWP	NORTHVAIL ELEMENTARY SCHOOL	27-3950-103	KG-05	9.6%	9.9%	9.3%

**SCHOOL PEER GROUP**

MORRIS  
CHESTER TWP

GRADE SPAN 03-05

MORRIS	PEQUANNOCK TWP	HILLVIEW SCHOOL	27-4080-055	KG-05	2.9%	0%	18.4%
MORRIS	RANDOLPH TWP	IRONIA SCHOOL	27-4330-070	KG-05	3.6%	0.7%	14.1%
MORRIS	WASHINGTON TWP	FLOCKTOWN-KOSSMANN ELEMENTARY SCHOOL	27-5520-030	PK-05	4.6%	2%	14.6%
PASSAIC	WAYNE TWP	LAFAYETTE ELEMENTARY SCHOOL	31-5570-090	KG-05	4.7%	1.8%	12.1%
SOMERSET	BERNARDS TWP	OAK STREET SCHOOL	35-0350-060	KG-05	4%	0.5%	11.7%
SOMERSET	BRIDGEWATER-RARITAN REG	VAN HOLTEN ELEMENTARY SCHOOL	35-0555-105	KG-04	3.5%	0%	14.3%
SOMERSET	MONTGOMERY TWP	MONTGOMERY LOWER MIDDLE SCHOOL	35-3320-045	05-06	4.3%	1.2%	11.1%
SUSSEX	SPARTA TWP	HELEN MORGAN SCHOOL	37-4960-060	04-05	3.9%	0.2%	18.3%
UNION	NEW PROVIDENCE BORO	ALLEN W. ROBERTS SCHOOL	39-3560-055	PK-06	4%	1.4%	8.5%

**DEMOGRAPHIC INFORMATION**

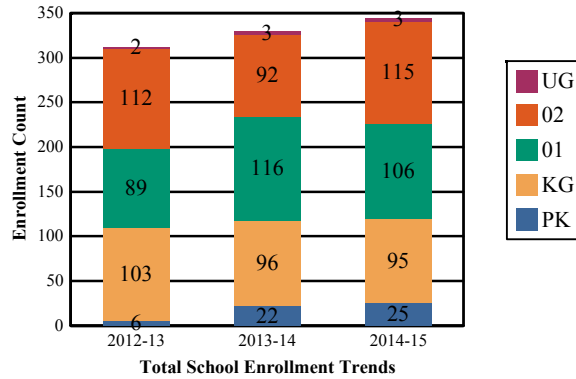
MORRIS  
CHESTER TWP

GRADE SPAN PK-02

27-0820-040  
DICKERSON ELEMENTARY SCHOOL  
250 RT. 24  
CHESTER, NJ 07930

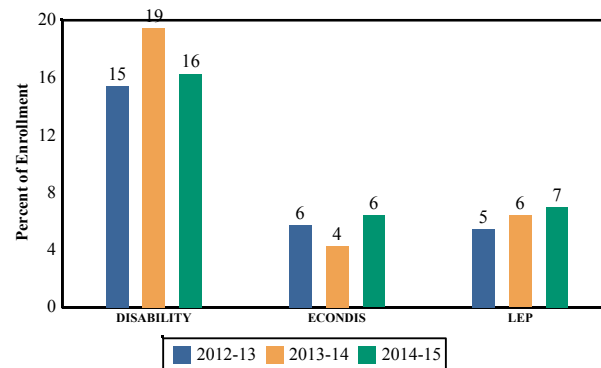
**Enrollment by Grade**

This graph presents the count of students who were 'on roll' by grade in October of each school year.



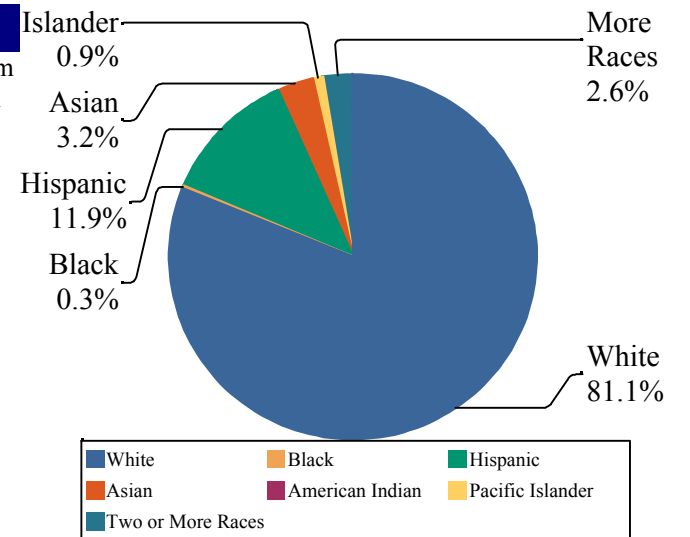
**Enrollment Trends by Program Participation**

This graph presents the percentages of students by program participation who were 'on roll' in October of each school year.



**Enrollment by Ethnic/Racial Subgroup**

This graph presents the percentages of enrollment for each subgroup defined by the No Child Left Behind Act of 2001.



**Current Year Enrollment by Program Participation**

2014-15	Count of Students	% of Enrollment
Students with Disability	56	16%
Economically Disadvantaged Students	22	6.4%
English Language Learners	24	7.0%

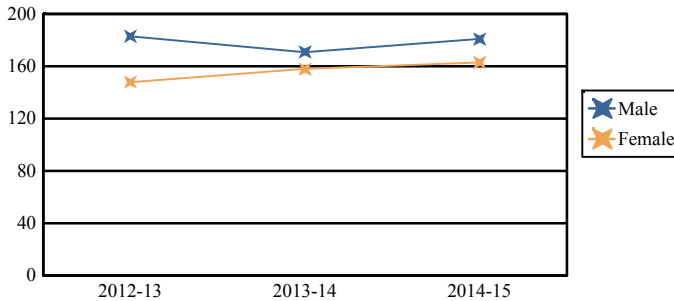
**Language Diversity**

This table presents the percentage of students who primarily speak each language in their home.

2014-15	Percent
English	96.6%
Spanish	3.4%

**Enrollment by Gender**

This graph presents the count of students by gender who were 'on roll' in October of each school year.



	Male	Female
2012-13	183	148
2013-14	171	158
2014-15	181	163

**Length of School Day**

This table presents the amount of time a school is in session for a typical student on a normal school day.

	School
<b>2014-15</b>	6 Hrs. 30 Mins.

**Student Suspension Rate**

This table presents the percentage of students who were suspended one or more times during the school year.

	School
<b>2014-15</b>	0.0%

**Instructional Time**

This table presents the amount of time that a typical student is engaged in instructional activities under the supervision of a certified teacher.

2014-15	School
<b>Full Time</b>	5 Hrs. 40 Mins.
<b>Shared Time</b>	0 Hrs. 0 Mins.

**Student Expulsions**

This table presents the number of students who were expelled from the school and district during the school year.

	School
<b>2014-15</b>	0

**Student to Staff Ratio**

This table presents the count of students per faculty member or administrator in the school. All staff are counted in full-time equivalents.

2014-15	School
<b>Faculty</b>	12
<b>Administrators</b>	344