

NEW JERSEY DEPARTMENT OF
LWD
LABOR AND WORKFORCE DEVELOPMENT



New Jersey Bio-Pharmaceutical Life Sciences Landscape

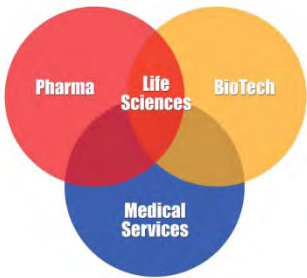
Prepared By:

John Ehret

Labor Market Analyst

New Jersey Department of Labor & Workforce Development
Division of Labor Market & Demographic Research

Winter 2012



NEW JERSEY BIO-PHARMACEUTICAL LIFE SCIENCES CLUSTER Overview

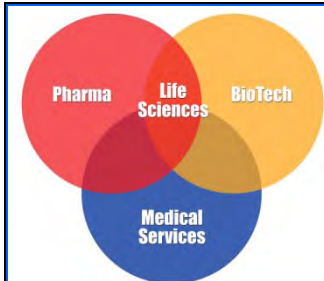
This presentation provides an overview of the landscape of New Jersey's Bio-Pharmaceutical Life Sciences Cluster, which includes the following components engaged in:

- ❖ **Pharmaceuticals**: Establishments primarily engaged in manufacturing or distribution of drug related products.
- ❖ **Biotech**: Services related establishments primarily engaged in scientific research, development, analytic and/or diagnostics.
- ❖ **Medical Devices**: Establishments primarily engaged in manufacturing of medical equipment and supplies.

Agenda

- ☐ Highlights of New Jersey's *"Bio-Pharmaceutical Life Sciences"* cluster.
- ☐ State & Regional details about New Jersey's *"Bio-Pharmaceutical Life Sciences"* cluster.
- ☐ Regional Economic Developments.
- ☐ Developments relevant to New Jersey's *Bio-Pharmaceutical Life Sciences* Cluster.



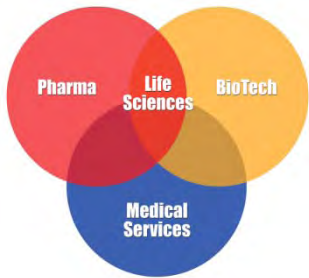


NEW JERSEY BIO/PHARMACEUTICALS LIFE SCIENCES CLUSTER Overview



**What does the
Bio-Pharmaceutical
Life Sciences
Cluster
offer New Jersey ?**

Lets take a look!!






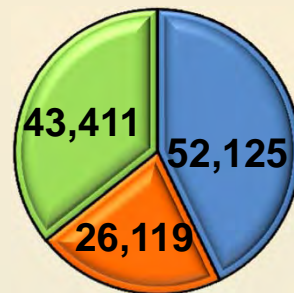
NEW JERSEY BIO-PHARMACEUTICAL LIFE SCIENCES CLUSTER Overall State Impact



The bio-pharmaceutical life sciences cluster has had an enormous impact on growing high quality jobs and adding significant value to the State's economic activities. Highlights (in 2011) included:

Employment



-  Pharmaceuticals
-  Medical Devices
-  BioTech R&D

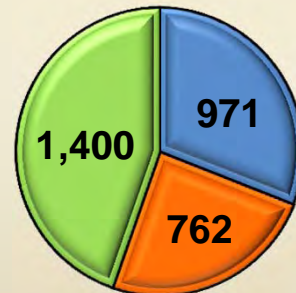


Employment total averaged 121,655 - or 3.9% - of all private sector workers in the state. -- Nationally, the proportion was just 2.0 percent!

- ☐ **Well-paying jobs:** Paid more than \$14.5 billion in annual payroll; 8.1 percent of the state's total wages.

Establishments

-  Pharmaceuticals
-  Medical Devices
-  BioTech R&D

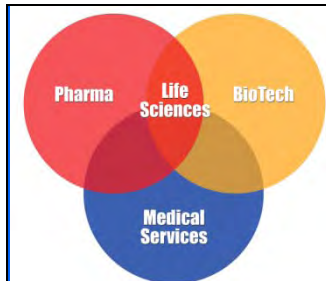


Establishments over the past five years (2006-2011) realized an increase by 236 (+8.1%) – Pharmaceutical led the way increasing by 14.0%.

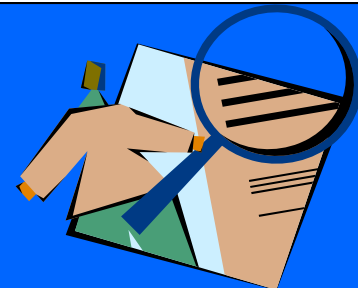
- ☐ **Investment Added Value:** Industry R&D was \$18.4 billion, the 2nd among the 50 states. (2009)

❖ **Added to Export Opportunities:** New Jersey exported approximately \$4.8 billion in manufactured goods worldwide in 2011.

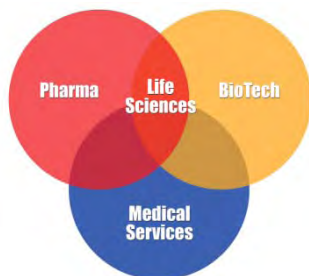
❖ **Added to Growing the State's Economy:** This cluster accounted for \$23 billion (nearly 5.0%) of New Jersey's gross domestic product. (Source: Rutgers, 2009)



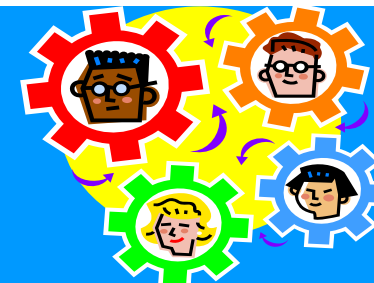
NEW JERSEY BIO-PHARMACEUTICALS LIFE SCIENCES CLUSTER



Industry Details of New Jersey's Bio-Pharmaceutical Life Sciences Cluster

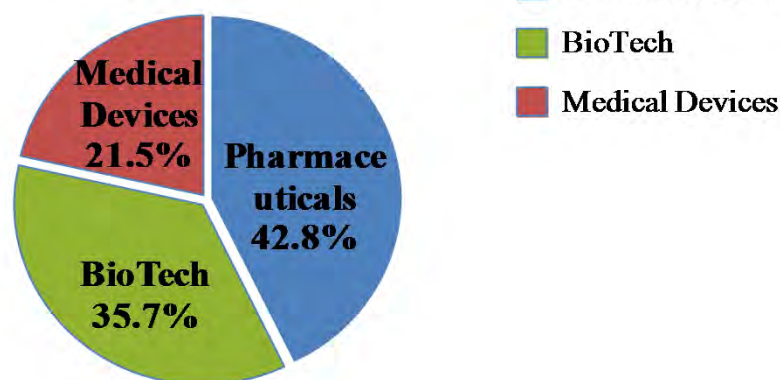


NEW JERSEY BIO-PHARMACEUTICAL LIFE SCIENCES CLUSTER - Statewide Employment -



Cluster Employment

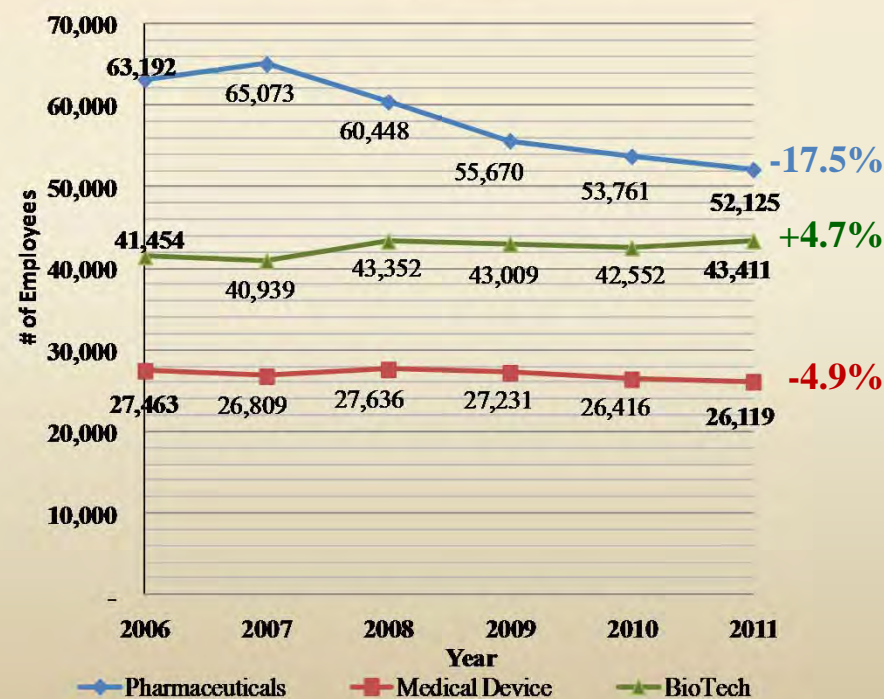
2011



New Jersey had an average of 121,655 employees within this cluster in 2011. The cluster lost 7.9 percent employment over the 5-year (2006-2011) period.

5-Year Employment Trend

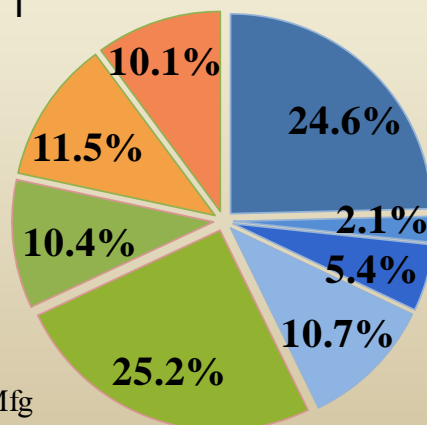
2006 - 2011

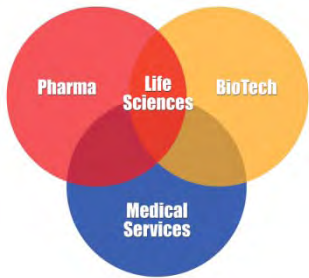


Industry Employment

2011

- Pharma & Medicine Mfg.
- Soap & Compound Mfg.
- Toilet Prep Mfg.
- Drugs & Druggists Sundries W/S
- Scientific R&D Services
- Medical & Diagnostic Labs
- Measuring & Cont'l Inst Mfg.
- Medical Equipment & Supplies Mfg





NEW JERSEY BIO-PHARMACEUTICAL LIFE SCIENCES CLUSTER

Concentration of Employment



Life Science
Percent of Total Employment
(2011 Annual Averages)

Northern Region

Employment: 59,319

Central Region

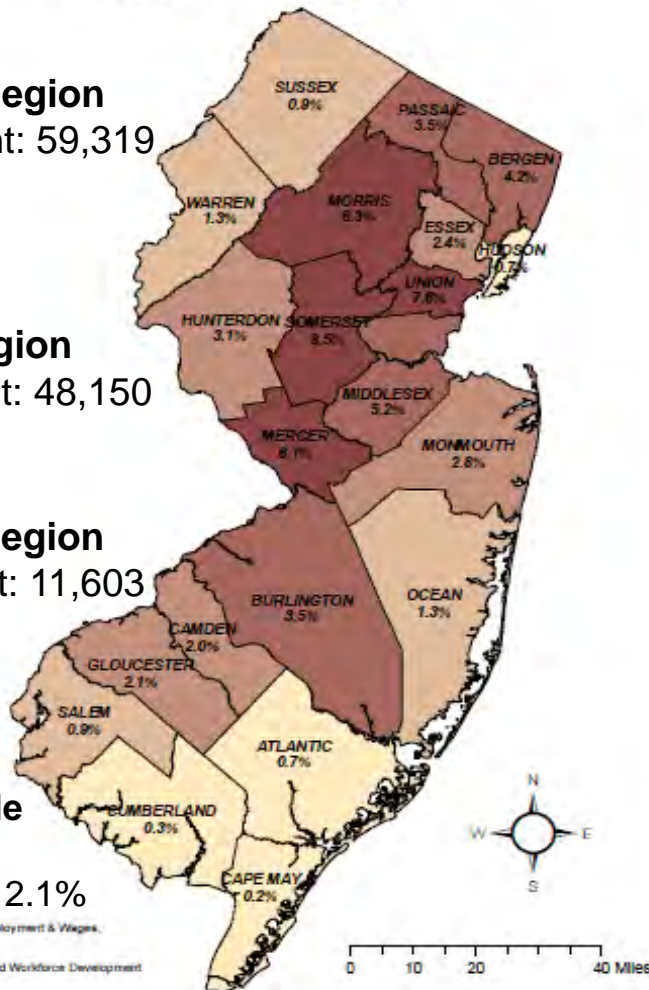
Employment: 48,150

Southern Region

Employment: 11,603

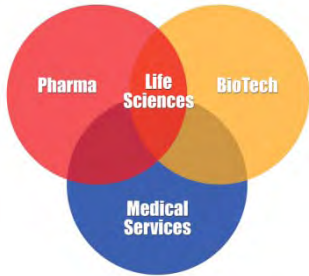
Unidentifiable by Region

Employment: 2.1%

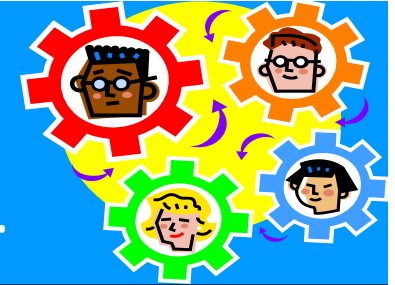


New Jersey's Bio-Pharmaceuticals Life Sciences Cluster employed an average of 121,655 workers in 2011. The breakdown of this highly talented workforce – *by region* – was as follows:

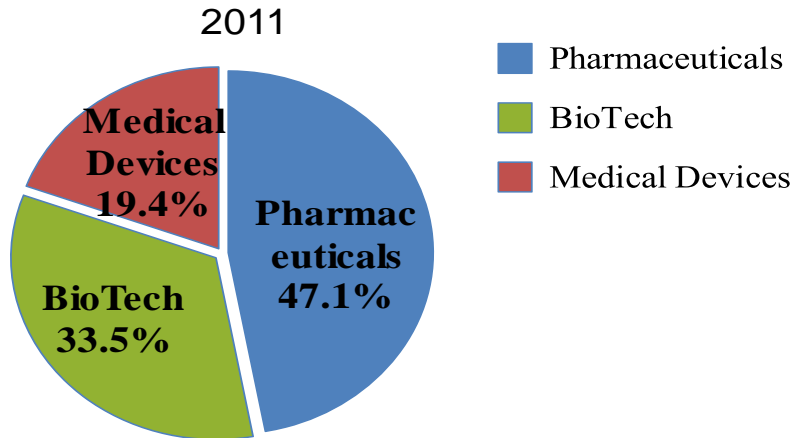
- ❖ **Northern NJ** accounted for 48.8 percent of Life Sciences employment with the largest share working in **Pharmaceuticals** (47.1%).
- ❖ **Central NJ** accounted for 39.6 percent of Life Sciences employment with the largest share working in **BioTech** (42.8%).
- ❖ **Southern NJ** accounted for 9.5 percent of Life Sciences employment with the largest share working in **Medical Devices** (63.3%).



NEW JERSEY BIO-PHARMACEUTICAL LIFE SCIENCES CLUSTER - Northern NJ Regional Employment -

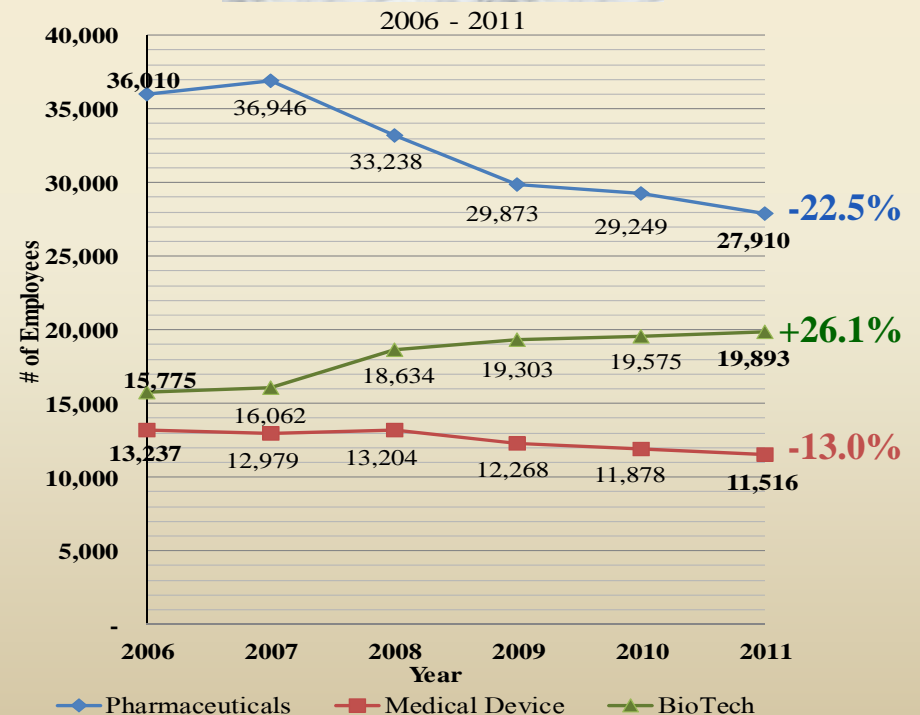


NNJ Regional Employment

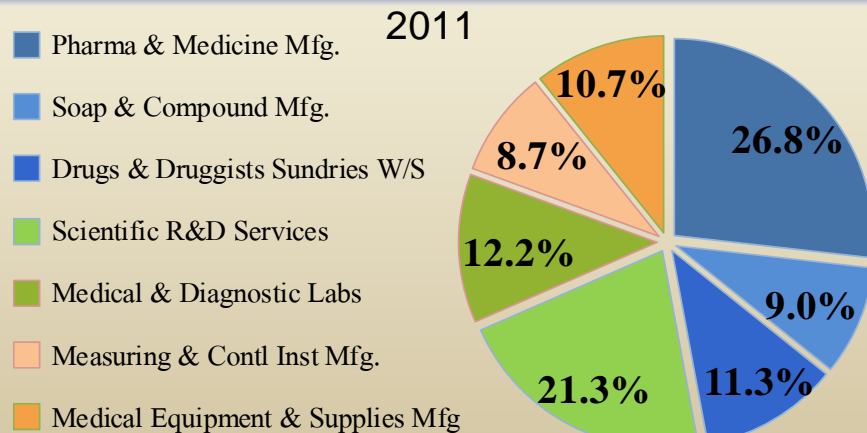


Over 59,300 workers were employed in this cluster in Northern New Jersey in 2011. The cluster's employment in this region declined by 8.8 percent over the 5-year period (2006-2011) period.

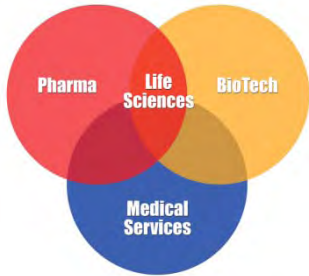
5-Year Employment Trend



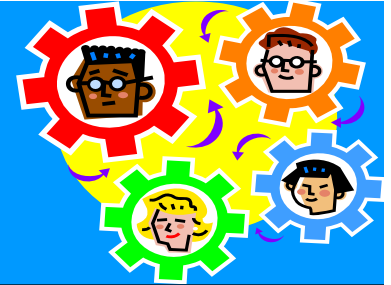
NNJ Industry Employment



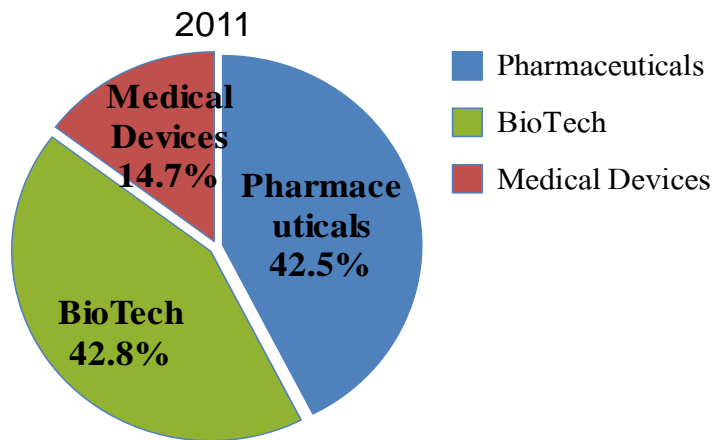
(SOURCE: Quarterly Census of Employment and Wages, 2011)



NEW JERSEY BIO-PHARMACEUTICAL LIFE SCIENCES CLUSTER - Central NJ Regional Employment -

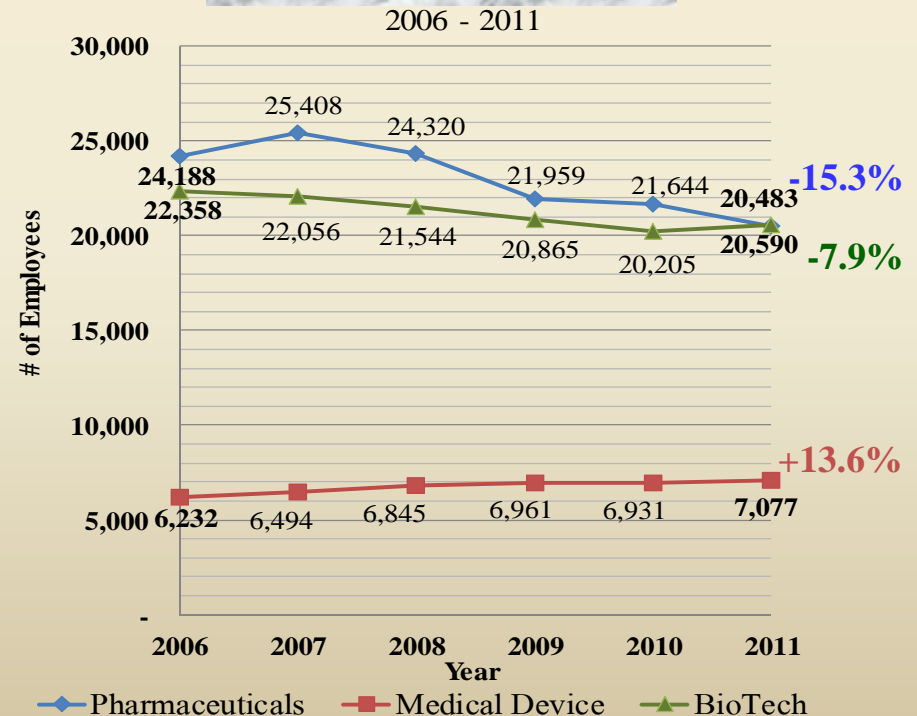


CNJ Regional Employment

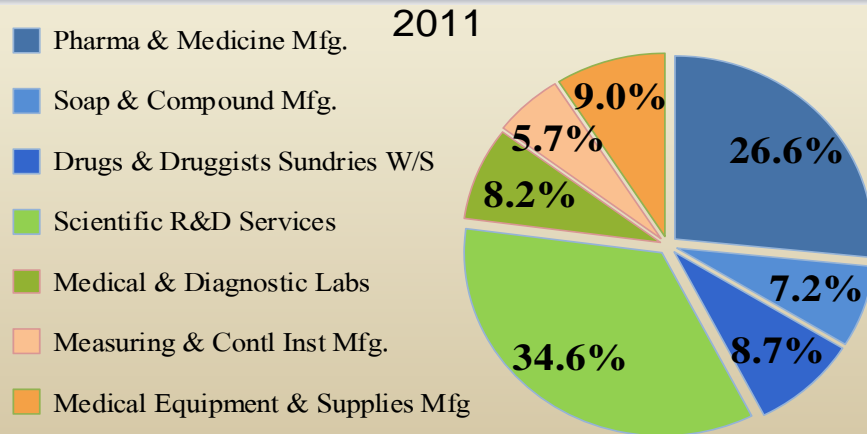


An average of 48,150 workers were employed in this cluster in Central New Jersey in 2011. The employment declined by 8.8 percent over the 5-year (2006-2011) period.

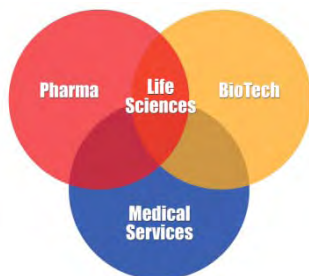
5-Year Employment Trend



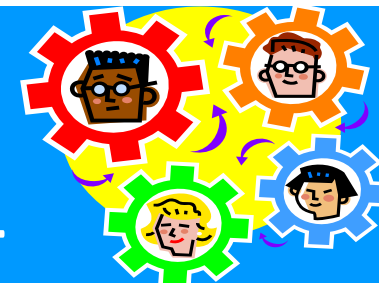
CNJ Industry Group Employment



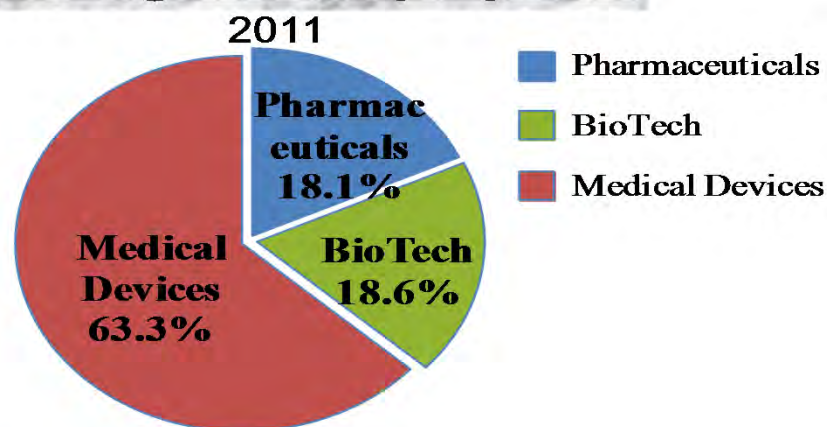
(SOURCE: Quarterly Census of Employment and Wages, 2011)



NEW JERSEY BIO-PHARMACEUTICAL LIFE SCIENCES CLUSTER - Southern NJ Regional Employment -



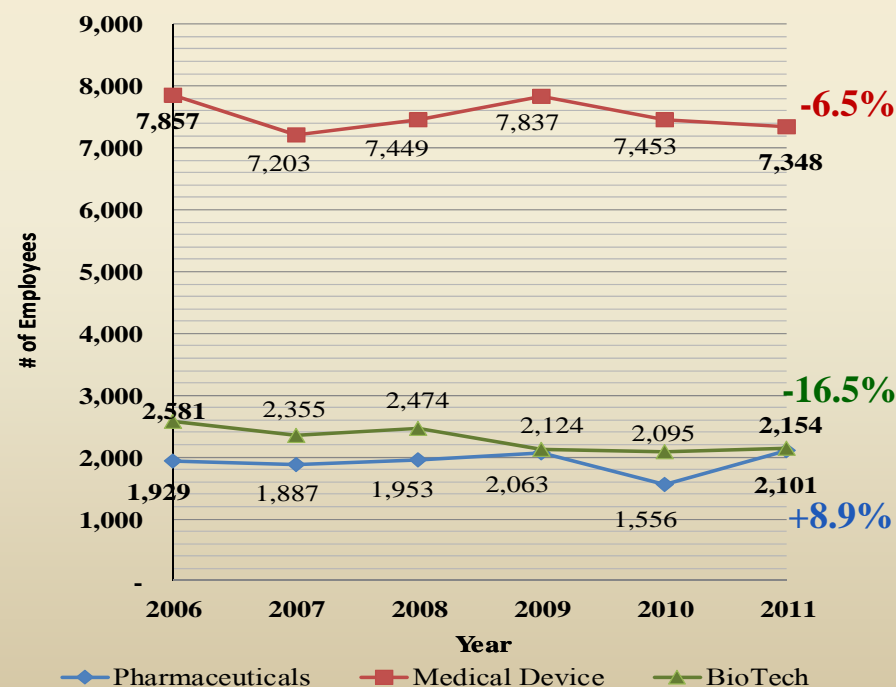
SNJ Regional Employment



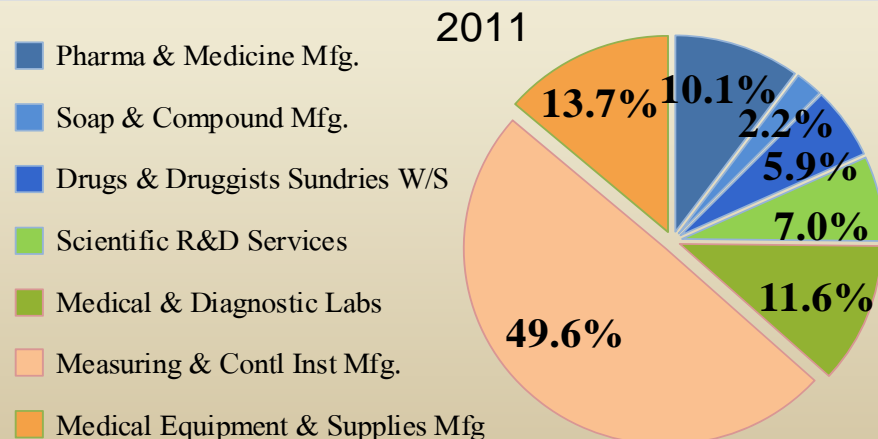
Over 11,600 workers were employed in this cluster in Southern New Jersey in 2011. The average employment declined by 6.2 percent over the 5-year period (2006-2011).

5-Year Employment Trend

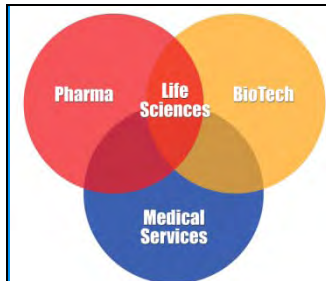
2006 - 2011



SNJ Industry Employment



(SOURCE: Quarterly Census of Employment and Wages, 2011)



NEW JERSEY BIO-PHARMACEUTICAL LIFE SCIENCES CLUSTER

Concentration of Pharmaceutical Employment



*Pharmaceutical Employment - New Jersey Counties
(2011 Annual Averages)*

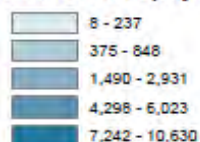
Northern Region

Employment:
27,900 (apx)

Central Region

Employment:
20,500 (apx)

Pharmaceutical Employment



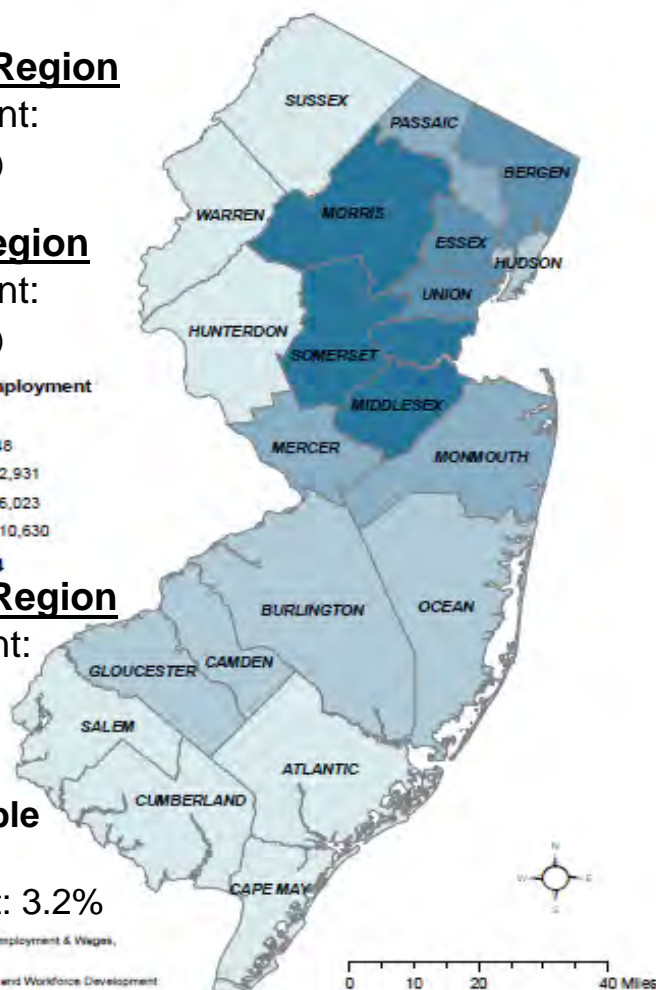
New Jersey: 50,494

Southern Region

Employment:
2,100 (apx)

Unidentifiable by Region

Employment: 3.2%

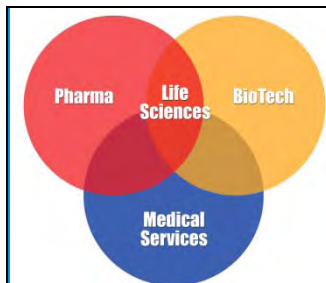


New Jersey's pharmaceutical employment averaged 52,125 in 2011.

The breakdown - *by region* – was as follows:

- ❖ **Northern** accounted for 53.5%.
- ❖ **Central** accounted for 39.3%.
- ❖ **Southern** accounted for 4.0%.

Date Source: Quarterly Census of Employment & Wages,
2011 Annual Averages, NJLWD
Prepared by:
New Jersey Department of Labor and Workforce Development
Bureau of Labor Market Information
November 2012



NEW JERSEY BIO-PHARMACEUTICAL LIFE SCIENCES CLUSTER

Concentration of Biotechnology Employment



*Biotechnology Employment - New Jersey Counties
(2011 Annual Averages)*

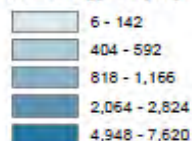
Northern Region

Employment:
19,900 (apx)

Central Region

Employment:
20,600 (apx)

Biotechnology Employment



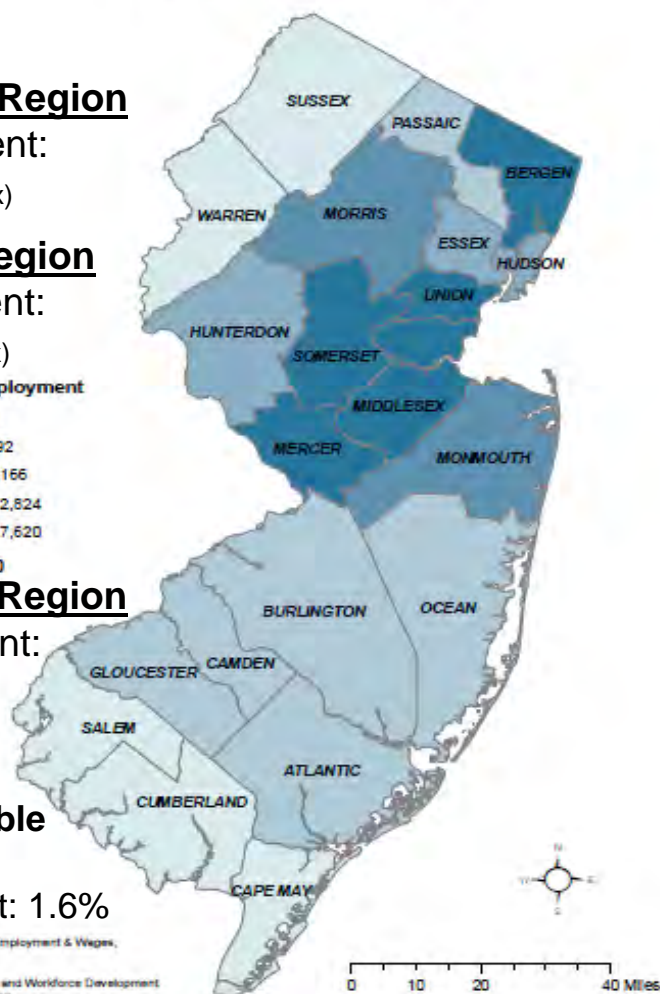
New Jersey: 42,650

Southern Region

Employment:
2,200 (apx)

Unidentifiable by Region

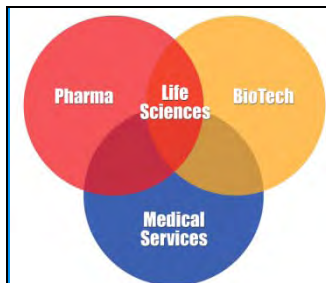
Employment: 1.6%



New Jersey's biotechnology employment averaged 43,411 in 2011.

The breakdown - *by region* - was as follows:

- ❖ **Northern** accounted for 45.8%.
- ❖ **Central** accounted for 47.5%.
- ❖ **Southern** accounted for 5.1%.



NEW JERSEY BIO-PHARMACEUTICAL LIFE SCIENCES CLUSTER

Concentration of Medical Device Employment



*Medical Device Employment - New Jersey Counties
(2011 Annual Averages)*

Northern Region

Employment:

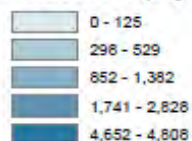
11,500 (apx)

Central Region

Employment:

7,100 (apx)

Medical Device Employment



New Jersey: 25,941

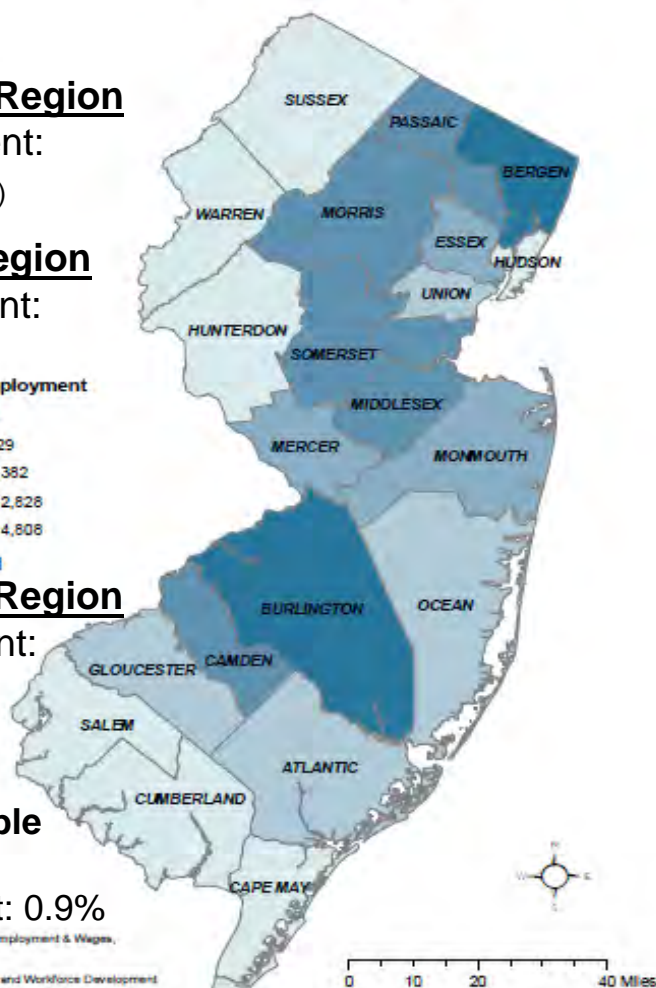
Southern Region

Employment:

7,300 (apx)

Unidentifiable by Region

Employment: 0.9%

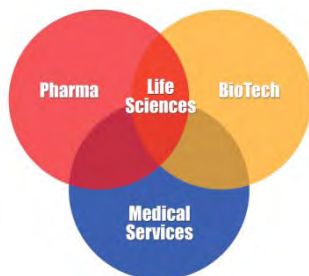


New Jersey's medical device employment averaged 26,119 in 2011.

The breakdown - *by region* - was as follows:

- ❖ **Northern** accounted for 44.0%.
- ❖ **Central** accounted for 27.2%
- ❖ **Southern** accounted for 27.9%.

Data Source: Quarterly Census of Employment & Wages,
2011 Annual Averages, NJLWD
Prepared by:
New Jersey Department of Labor and Workforce Development
Bureau of Labor Market Information
November 2012

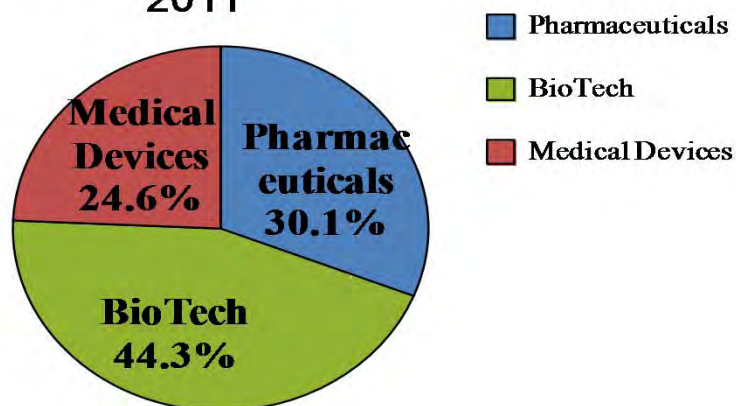


NEW JERSEY BIO-PHARMACEUTICAL LIFE SCIENCES CLUSTER Statewide Establishments



Statewide Establishment

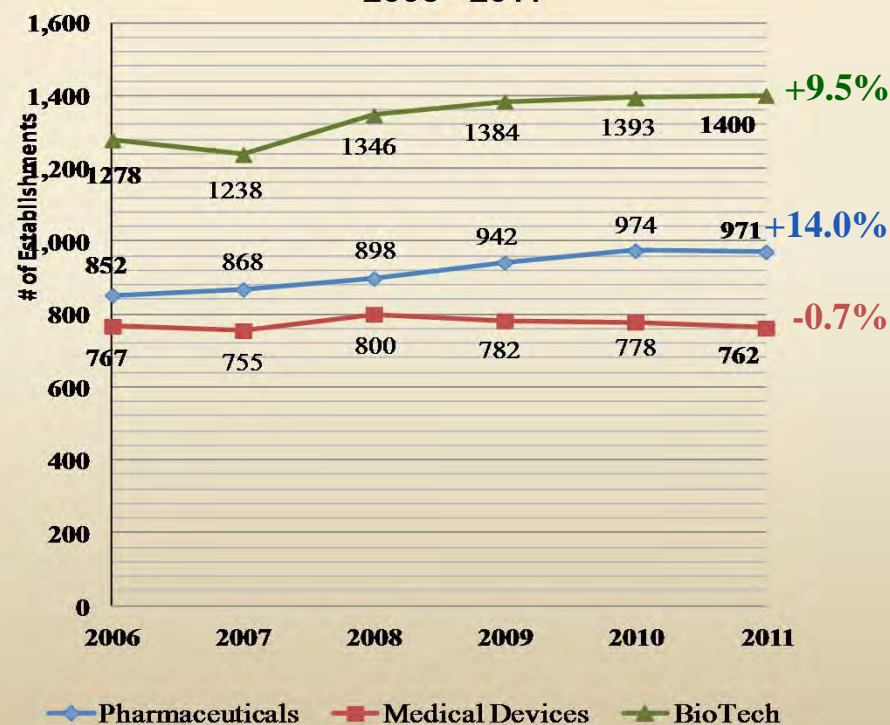
2011



New Jersey had an average of 3,133 establishments in this cluster in 2011. These establishments gained 8.1% over the 5-year (2006-2011) period.

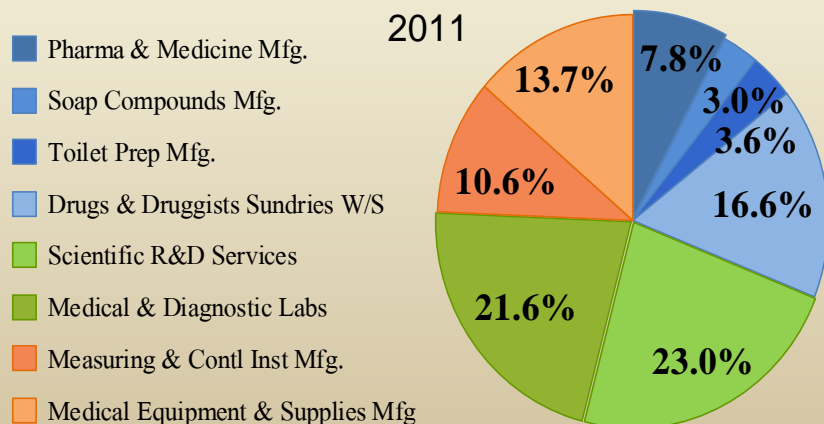
5-Year Establishment Trend

2006 – 2011

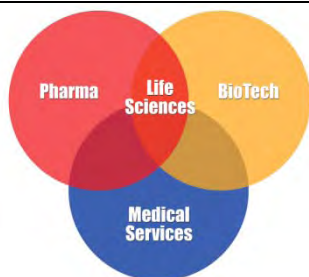


Industry Establishments

2011



(SOURCE: Quarterly Census of Employment and Wages, 2011)



NEW JERSEY BIO-PHARMACEUTICAL LIFE SCIENCES CLUSTER

Concentration of Establishments



Life Science Employers

Northern Region

Establishments:

1,358

Central Region

Establishments:

1,031

Southern Region

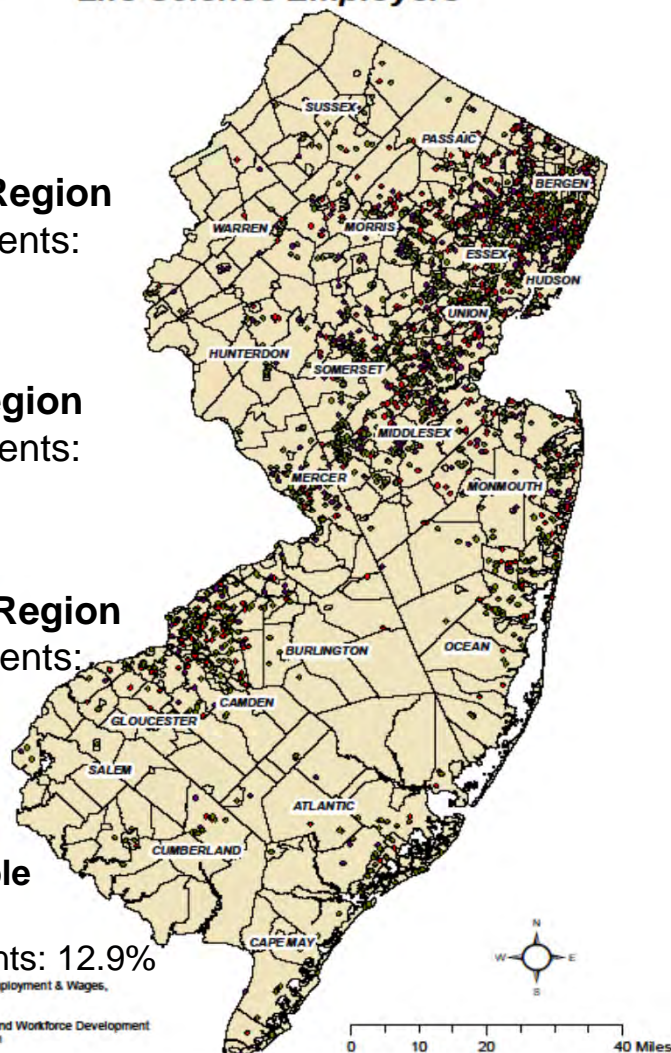
Establishments:

342

Unidentifiable

by Region :

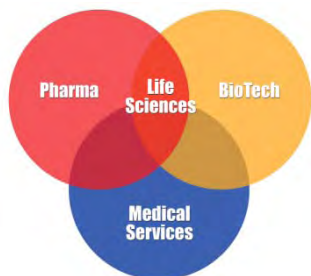
Establishments: 12.9%



New Jersey had over 3,100 establishments directly engaged in this exceptionally highly concentrated Bio-Pharmaceutical Life Sciences cluster in 2011. The establishment breakdown – *by region* – was as follows:

- ❖ **Northern Region** accounts for 43.3% of Life Sciences led by the **Biotech** component (39.7 %)
- ❖ **Central Region** accounts for 32.9% of Life Sciences led by the **Biotech** component (44.3%)
- ❖ **Southern Region** accounts for 10.9% of Life Sciences led by the **Biotech** component (54.7%)

Data Source: Quarterly Census of Employment & Wages,
2010 Second Quarter, NJLWD
Prepared by:
New Jersey Department of Labor and Workforce Development
Bureau of Labor Market Information
August 2011



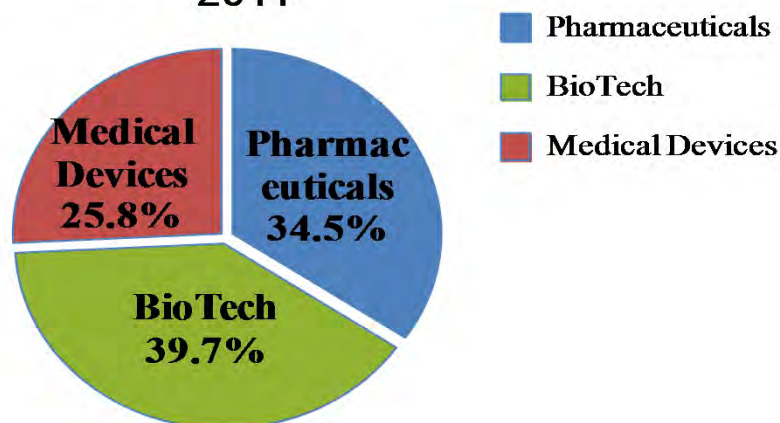
NEW JERSEY BIO-PHARMACEUTICAL LIFE SCIENCES CLUSTER

Northern NJ Regional Establishments



NNJ Regional Establishments

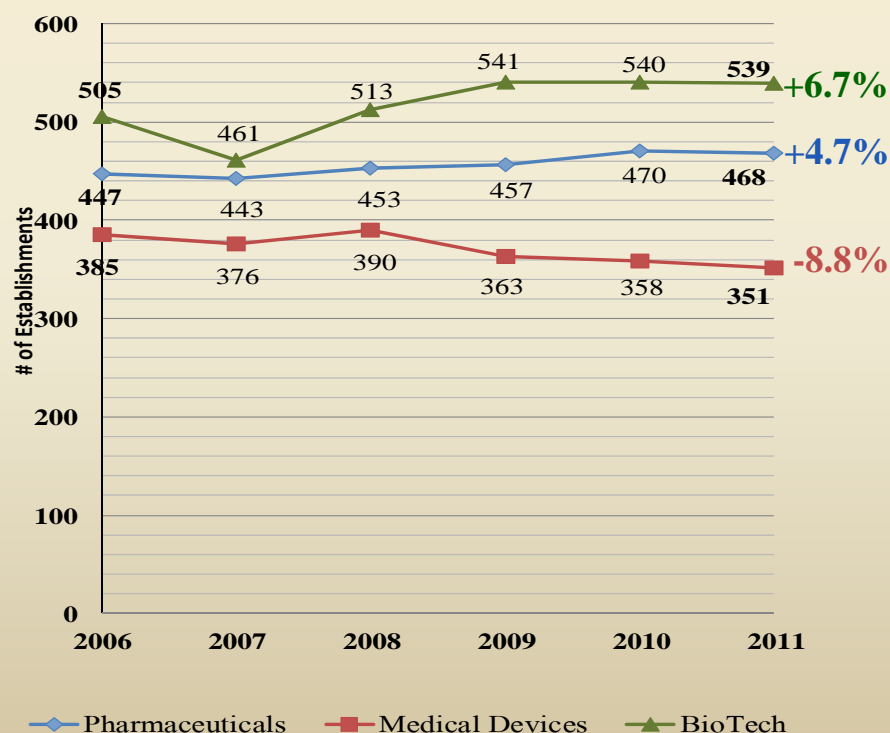
2011



Northern New Jersey had an average of 1,358 establishments in this cluster in 2011. These establishments gained 1.6% over the 5-year (2006-2011) period.

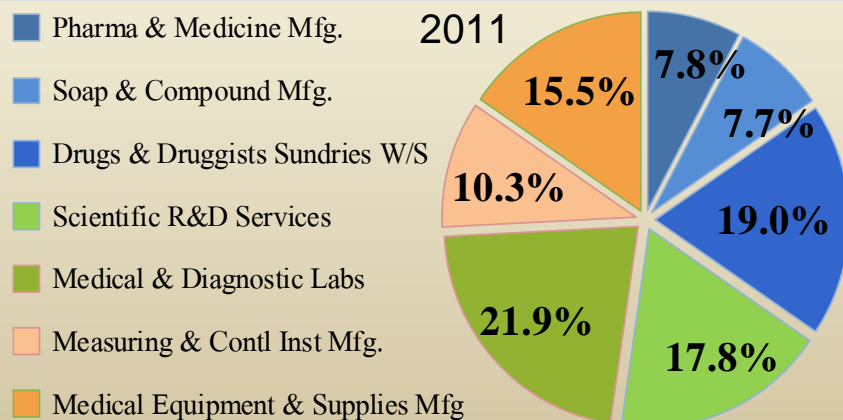
5-Year Establishment Trend

2006 – 2011

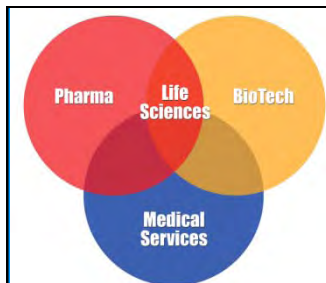


NNJ Industry Establishments

2011



(SOURCE: Quarterly Census of Employment and Wages, 2011)



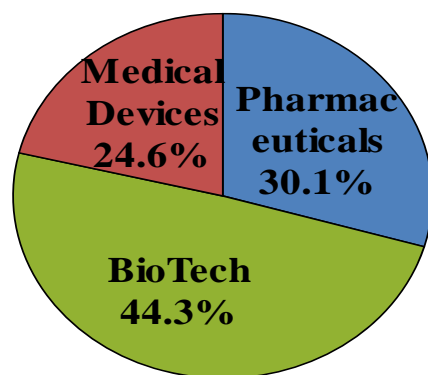
NEW JERSEY BIO-PHARMACEUTICAL LIFE SCIENCES CLUSTER

Central NJ Regional Establishments



Central NJ Establishment

2011

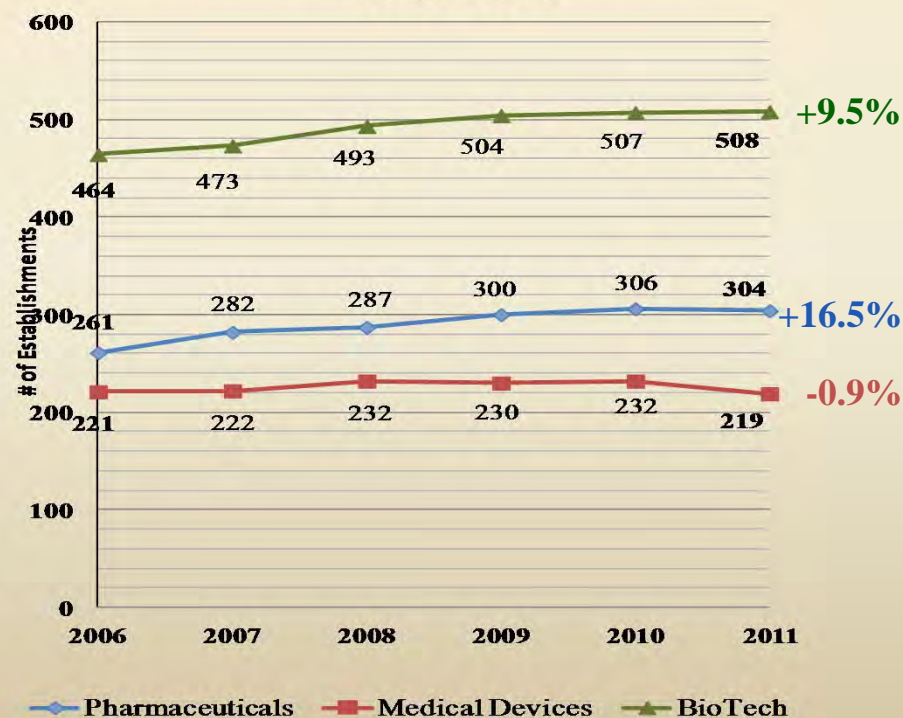


- Pharmaceuticals
- BioTech
- Medical Devices

Central New Jersey had an average 1,031 establishments in this cluster in 2011. These establishments gained 9.0% over the 5-year (2006-2011) period.

5-Year Establishment Trend

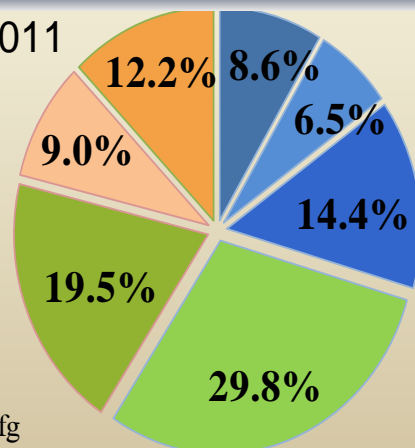
2006 – 2011



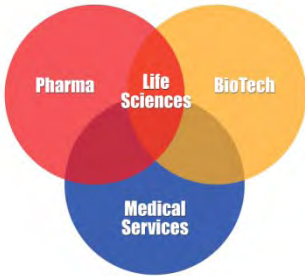
CNJ Industry Establishments

2011

- Pharma & Medicine Mfg.
- Soap & Compound Mfg.
- Drugs & Druggists Sundries W/S
- Scientific R&D Services
- Medical & Diagnostic Labs
- Measuring & Cont'l Inst Mfg.
- Medical Equipment & Supplies Mfg



(SOURCE: Quarterly Census of Employment and Wages, 2011)



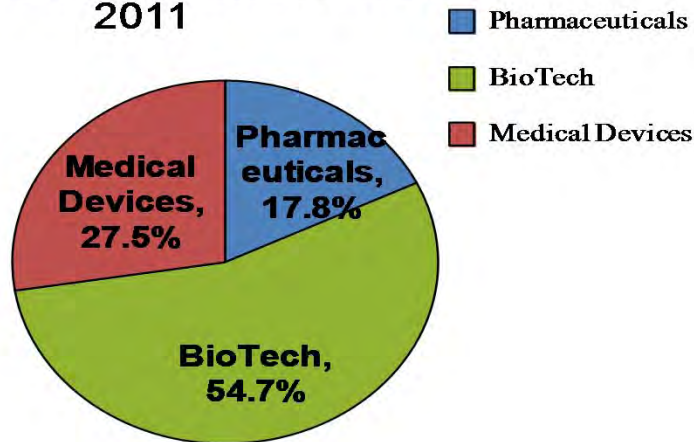
NEW JERSEY BIO-PHARMACEUTICAL LIFE SCIENCES CLUSTER

Southern NJ Regional Establishments



Southern NJ Establishment

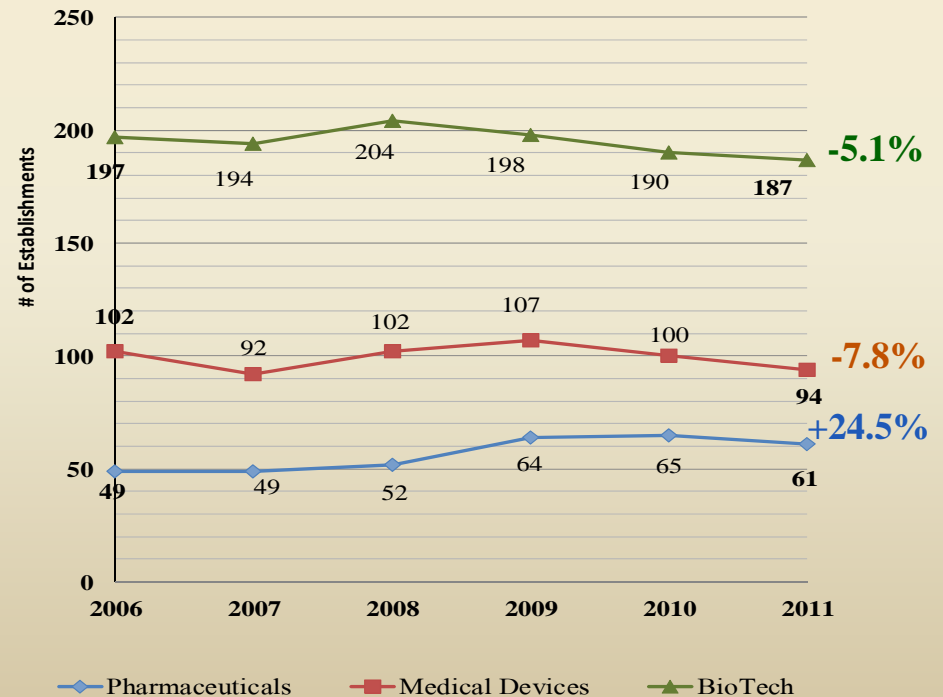
2011



Southern New Jersey averaged 342 establishments in this cluster in 2011. These establishments lost 1.7% over the 5-year (2006-2011) period.

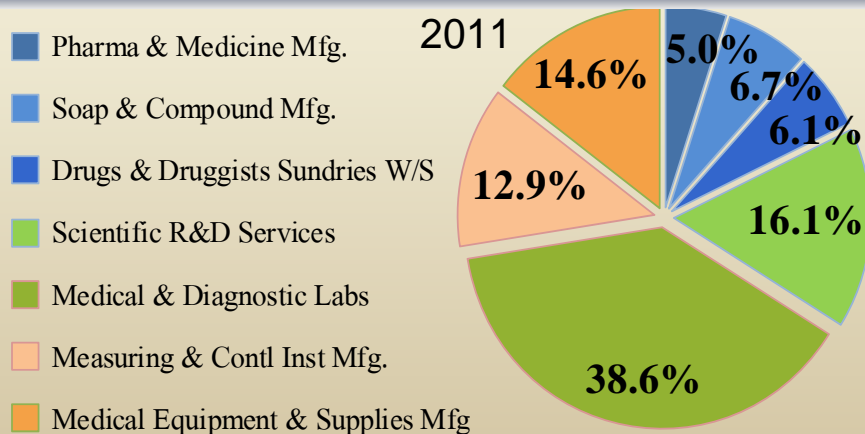
5-Year Establishment Trend

2006 – 2011

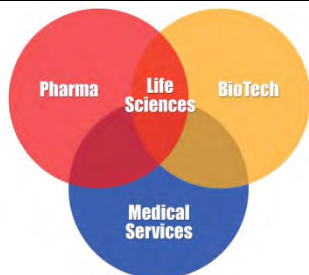


SNJ Industry Establishments

2011



(SOURCE: Quarterly Census of Employment and Wages, 2011)



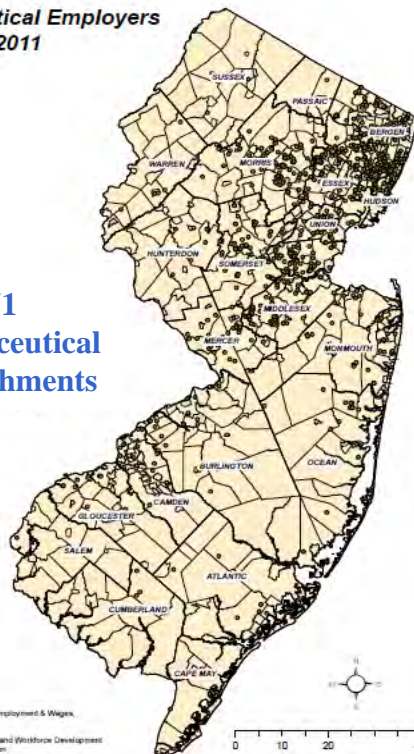
NEW JERSEY BIO-PHARMACEUTICAL LIFE SCIENCES CLUSTER Establishment Concentration



**Pharmaceutical Employers
2011**

971

**Pharmaceutical
Establishments**



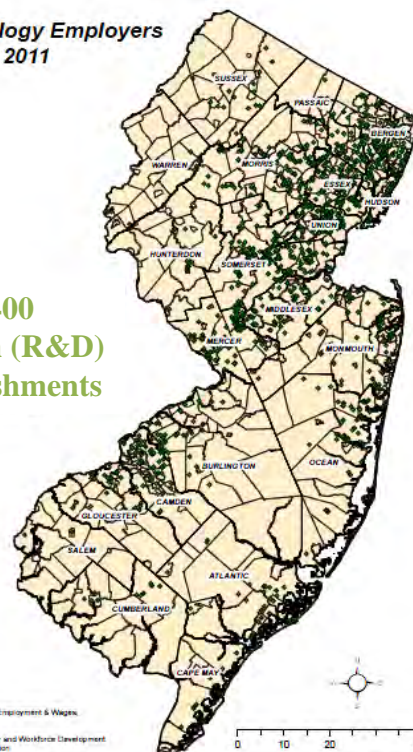
Data Source: Quarterly Census of Employment & Wages,
2011 Second Quarter, NJLWD
Prepared by:
New Jersey Department of Labor and Workforce Development
Bureau of Labor Market Information
November 2012

Pharmaceutical establishments have a powerful presence in northern NJ, attracted by an excellent labor pool, major universities and access to all modes of terrific transportation.

BioTech establishments have a strong presence in New Jersey, especially within the “Einstein Alley Corridor” area. Nearby universities and incubators are a significant contributing factor.

**Biotechnology Employers
2011**

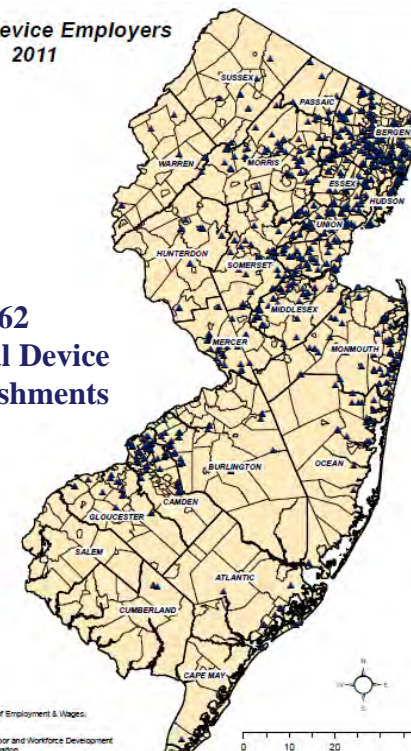
**1,400
BioTech (R&D)
Establishments**



Data Source: Quarterly Census of Employment & Wages,
2011 Second Quarter, NJLWD
Prepared by:
New Jersey Department of Labor and Workforce Development
Bureau of Labor Market Information
November 2012

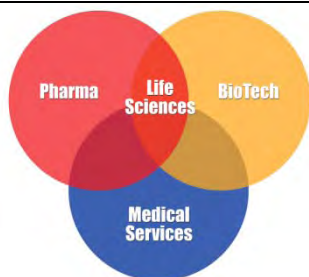
**Medical Device Employers
2011**

**762
Medical Device
Establishments**



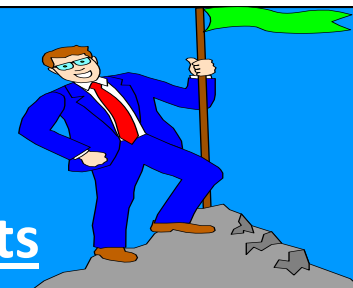
Data Source: Quarterly Census of Employment & Wages,
2011 Second Quarter, NJLWD
Prepared by:
New Jersey Department of Labor and Workforce Development
Bureau of Labor Market Information
November 2012

Medical Device establishments have a robust presence in NJ, especially located in the north-eastern section of the state in the heart of the manufacturing area, adjoining ‘Pharma’ country.



NEW JERSEY BIO-PHARMACEUTICAL LIFE SCIENCES CLUSTER

Concentration of Pharmaceutical Establishments



Pharmaceutical Employers 2011

Northern Region

Establishments:

468

Central Region

Establishments:

304

Life Science Employers

- Pharmaceutical

Southern Region

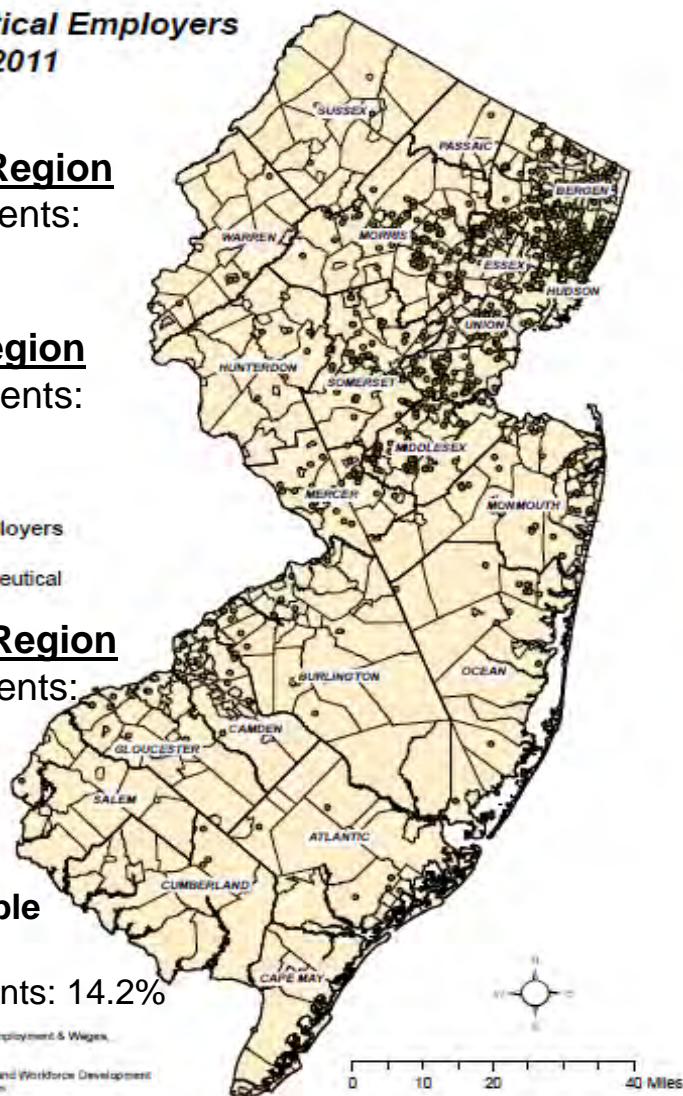
Establishments:

61

Unidentifiable

by Region :

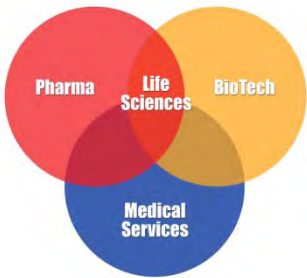
Establishments: 14.2%



In 2011, New Jersey averaged 971 establishments directly engaged in the pharmaceutical industries.

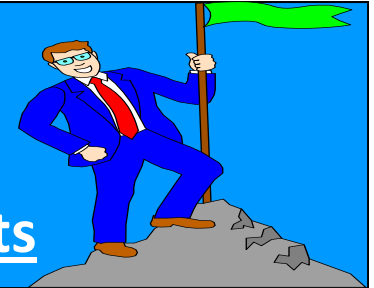
The establishment breakdown - *by region* – was as follows:

- ❖ **Northern Region: 48.2%**
- ❖ **Central Region: 31.3%**
- ❖ **Southern Region: 6.3%**



NEW JERSEY BIO-PHARMACEUTICAL LIFE SCIENCES CLUSTER

Concentration of Biotechnology Establishments



Biotechnology Employers 2011

Northern Region

Establishments:
539

Central Region

Establishments:
508

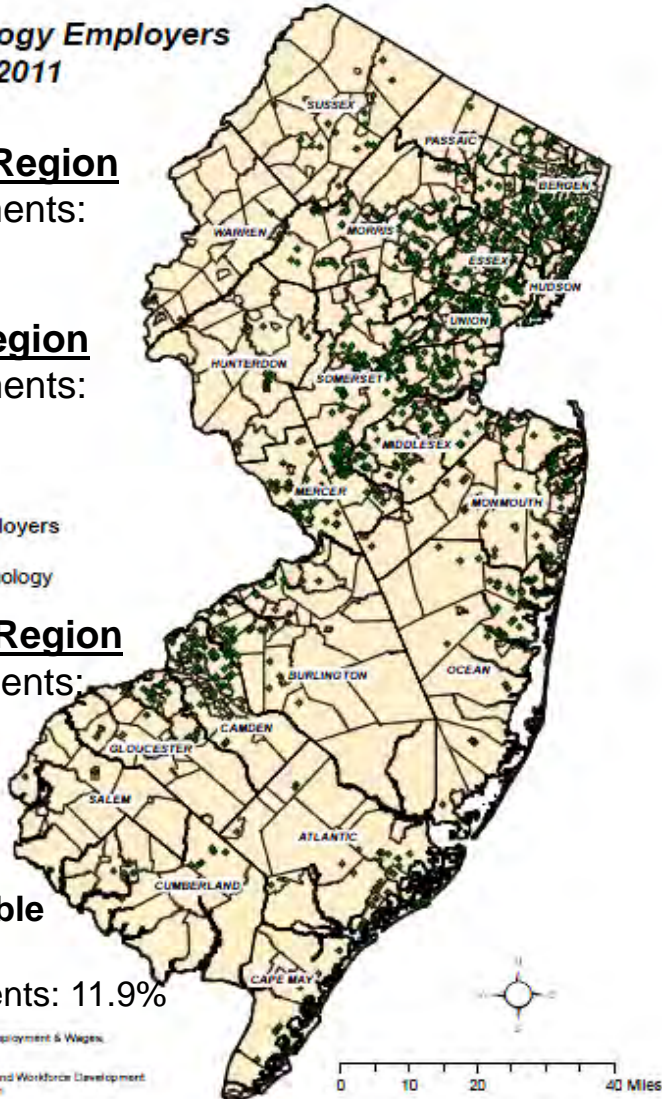
Life Science Employers

♦ Biotechnology

Southern Region

Establishments:
187

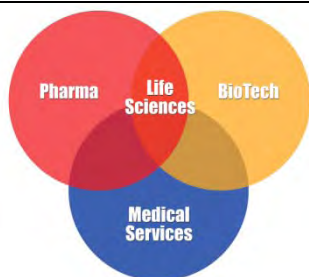
**Unidentifiable
by Region :**
Establishments: 11.9%



In 2011, New Jersey averaged 1,400 establishments directly engaged in the biotechnology industries.

The establishment breakdown - *by region* – was as follows:

- ❖ **Northern Region: 38.5%**
- ❖ **Central Region: 36.3%**
- ❖ **Southern Region: 13.3%**



NEW JERSEY BIO-PHARMACEUTICAL LIFE SCIENCES CLUSTER

Concentration of Medical Device Establishments



Medical Device Employers 2011

Northern Region

Establishments:
351

Central Region

Establishments:
219

Life Science Employers

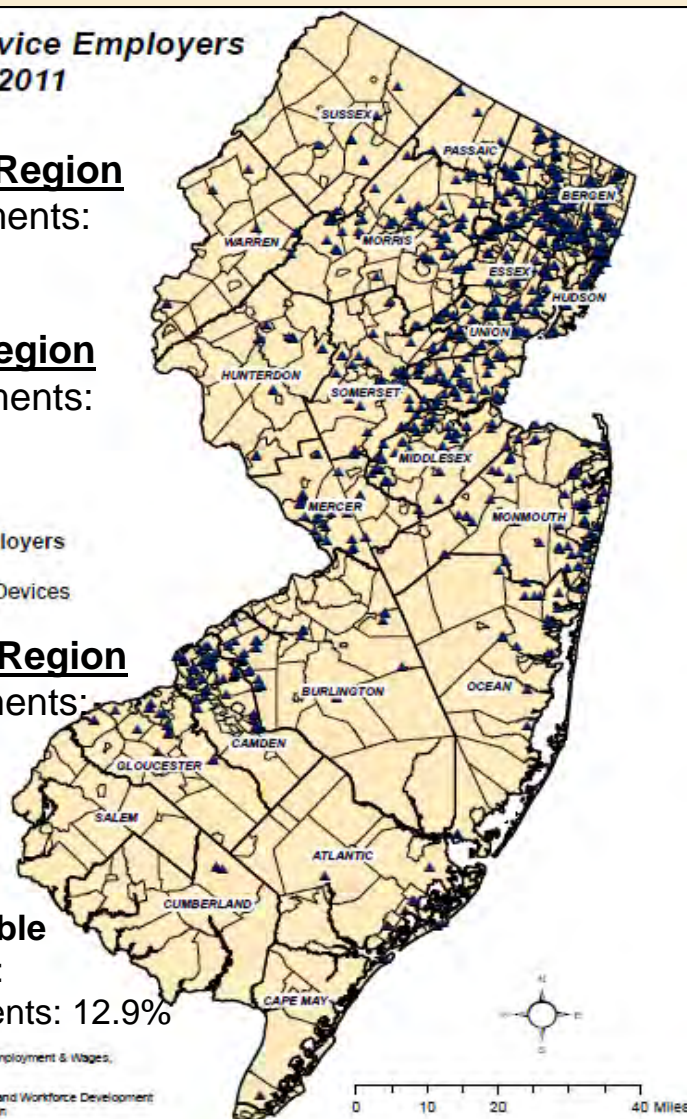
▲ Medical Devices

Southern Region

Establishments:
94

Unidentifiable by Region :

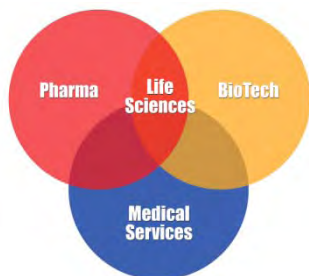
Establishments: 12.9%



In 2011, New Jersey averaged 762 establishments directly engaged in the medical device industries.

The establishment breakdown - *by region* – was as follows:

- ❖ **Northern Region: 46.1%**
- ❖ **Central Region: 28.7%**
- ❖ **Southern Region: 12.3%**



NEW JERSEY BIO-PHARMACEUTICAL LIFE SCIENCES CLUSTER

Summary of Employment & Establishments

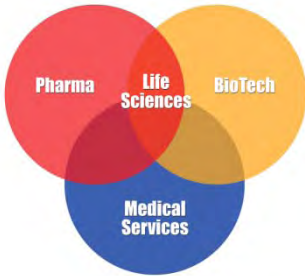
The following chart provides a geographic summary of Life Sciences' employment & establishments in New Jersey;

Employment *	2011		5-Year (2006-2011) Trend			
	Cluster		Pharmaceutical	Biotech	Medical Device	Overall Cluster
Statewide	121,655		-17.5%	4.7%	-4.9%	-7.9%
Nothern New Jersey	59,319	48.8%	-22.5%	26.1%	-13.0%	-8.8%
Central New Jersey	48,150	39.6%	-15.3%	-7.9%	13.6%	-8.8%
Southern New Jersey	11,603	9.5%	8.9%	-16.5%	-6.5%	-6.2%
Establishments *	2011		5-Year (2006-2011) Trend			
	Cluster		Pharmaceutical	Biotech	Medical Device	Overall Cluster
Statewide	3,133		9.5%	14.0%	-0.7%	8.1%
Nothern New Jersey	1,358	43.3%	6.7%	4.7%	-8.8%	1.6%
Central New Jersey	1,031	32.9%	16.5%	9.5%	-0.9%	9.0%
Southern New Jersey	342	10.9%	24.5%	-5.1%	-7.8%	-1.7%

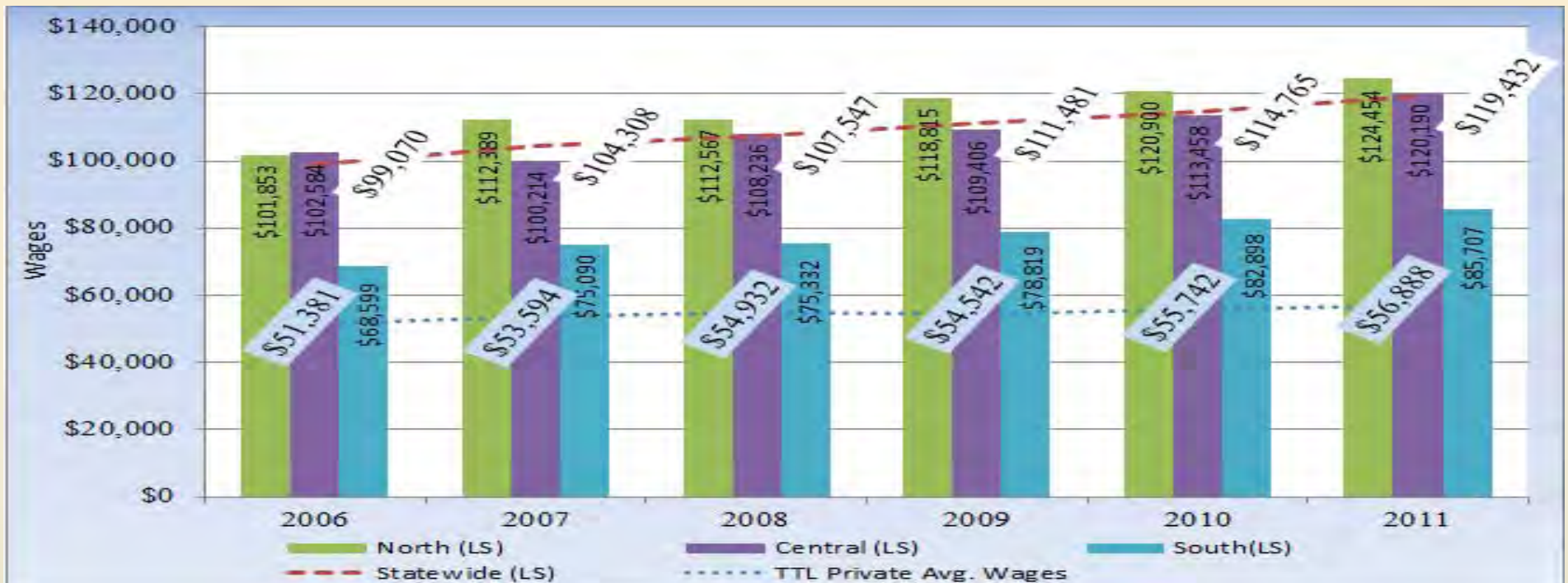
(SOURCE: New Jersey Department of Labor & Workforce Development, Quarterly Census of Employment and Wages)

* Note: Not all data was identifiable by region. Specifically:

- *Employment: 0.9%*
- *Establishments: 13.1%*

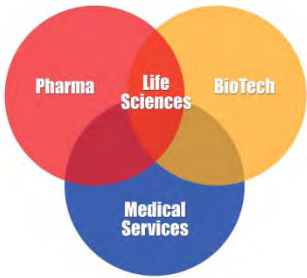


NEW JERSEY BIO-PHARMACEUTICAL LIFE SCIENCES CLUSTER Average Annual Wages



This cluster's statewide 2011 annual average wage was \$119,432, which was 109.9 percent higher than the state's total private sector's average wages of \$56,888. The cluster's three components (*statewide*) all had wages that were significantly higher than the statewide total private average wages; Medical Device \$94,572 (66.2%), Biotech \$116,032 (104.0) and Pharmaceuticals \$134,721 (136.8%)

(SOURCE: New Jersey Department of Labor & Workforce Development, Quarterly Census of Employment and Wages, 2011)

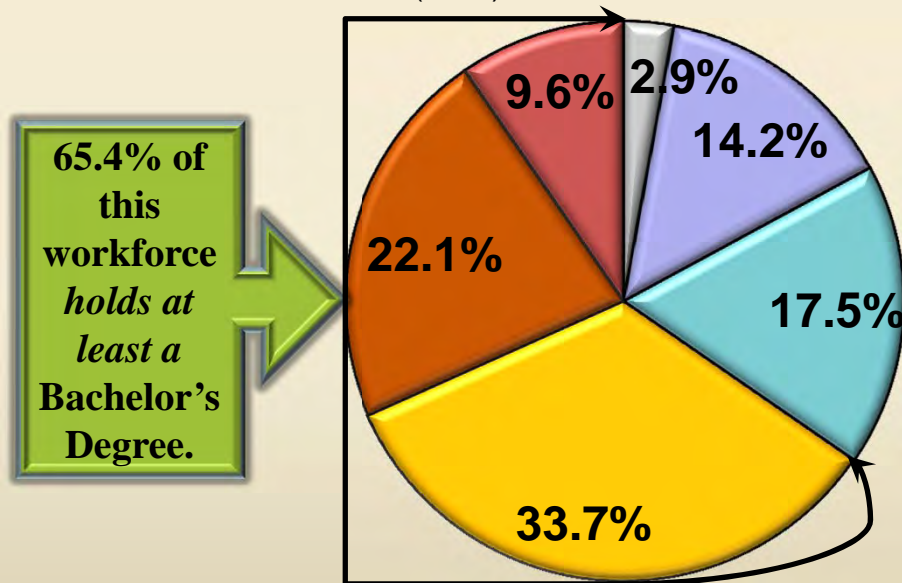


NEW JERSEY BIO-PHARMACEUTICAL LIFE SCIENCES CLUSTER Education



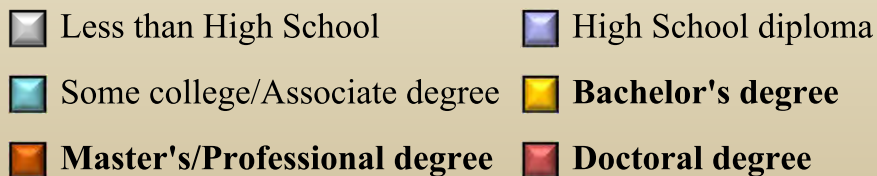
Due to the high level and technical demands of many of the occupations found in this cluster, these related New Jersey employer's had a tremendous need for highly well-educated workers.

Educational Breakdown
(2011)

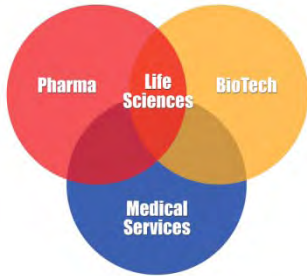


□ New Jersey's highly well-educated workforce is realized in this cluster as nearly *two thirds* of its workforce *holds at least* a bachelor's.

- ❖ Bachelors: 33.7%
- ❖ Master's/Professional: 22.1%
- ❖ Doctoral: 9.6%



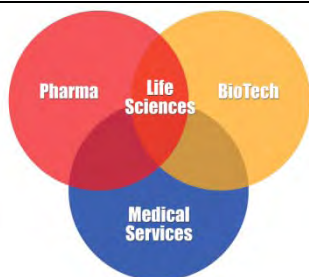
(Source: 2011 American Community Survey Public Use Microdata Sample)



NEW JERSEY BIO-PHARMACEUTICALS LIFE SCIENCES CLUSTER



Economic Development Projects in New Jersey's Bio-Pharmaceutical Life Sciences Cluster



NORTHERN NJ

BIO-PHARMACEUTICAL LIFE SCIENCES CLUSTER

RECENT ECONOMIC DEVELOPMENT PROJECTS

ThorLabs, Newton, NJ

The company recently opened a new 120,000-sq.-ft.-three-story facility in Newton. In addition, it intends to expand its facility in Andover Twp.

DSM Nutritional Products, White Twp.
Capital Inv: \$200M into expansion: +160 job.

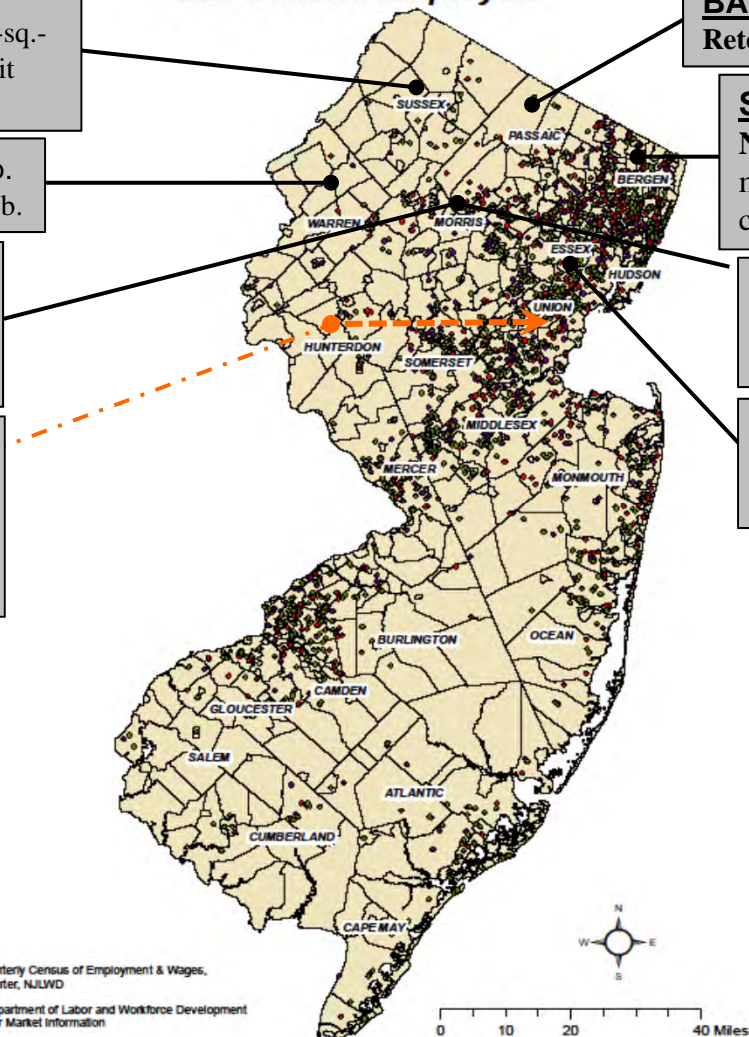
BASF, Florham Park, NJ **Relocation / Expansion**

Also, adding its pharmaceutical supply unit here.

Merck & Co., Summit, NJ

(Relocating from Whitehouse Station, NJ.)
Involves approximately 2,000 jobs.
Also an expansion project, which includes setting up the Animal Vet. Unit in Summit.

Life Science Employers



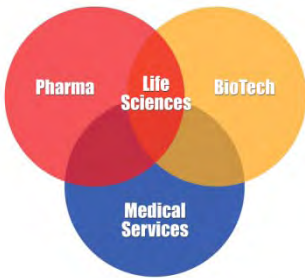
BAE Systems, Wayne, NJ
Retention / Investment

Suzhou Pharma Svcs, Lyndhurst, NJ
New: Contract development & manufacturing organization with new corporate headquarters.

Bayer HealthCare, Whippany, NJ
Retention / Expansion
Jobs involved: 1,500 – 2,500

Panasonic Healthcare, Newark, NJ
New healthcare division to focus on the life sciences, hearing care and diagnostics.

Data Source: Quarterly Census of Employment & Wages,
2010 Second Quarter, NJLWD
Prepared by:
New Jersey Department of Labor and Workforce Development
Bureau of Labor Market Information
August 2011



CENTRAL NJ

BIO-PHARMACEUTICAL LIFE SCIENCES CLUSTER

RECENT ECONOMIC DEVELOPMENT PROJECTS

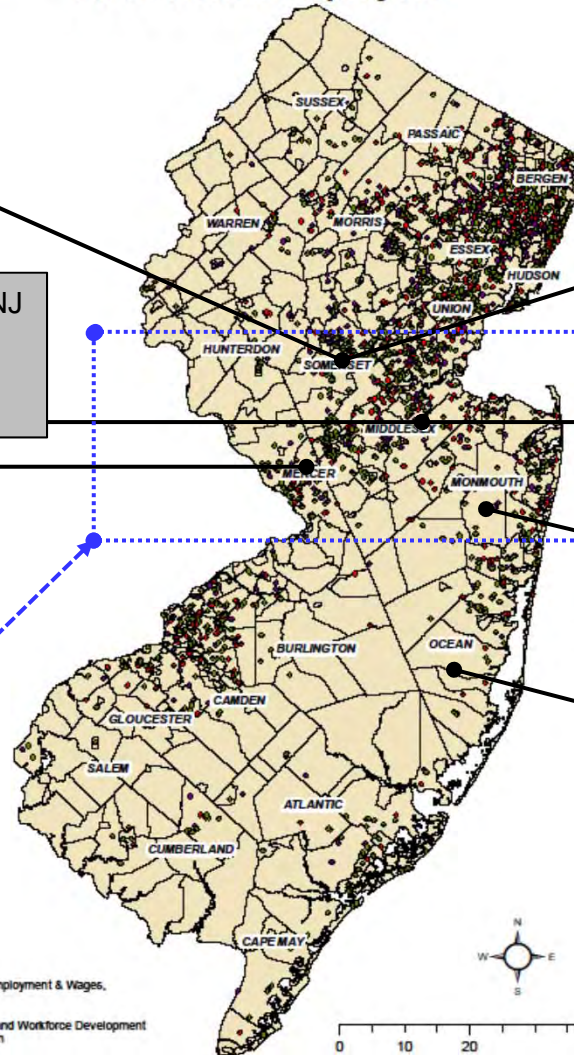
Life Science Employers

Ipsen, Basking Ridge, NJ
Established its new North American headquarters
Create new jobs: 100 (apx).

Watson Pharmaceuticals, North Brunswick, NJ
Invest \$4.5 million to establish a Global R&D Technology Center. About 50 new jobs to include: Scientists, Chemists, Engineers & Support Staff.

SciPark, East Windsor, NJ
Current status: Under construction.
When completed: A quarter-million square feet of space intended to attract science & technological based companies.

"5 percent of the [Hunterdon, Mercer, Middlesex, Monmouth & Somerset Counties] office space, about 6.5 million square feet, is laboratory space and other specialized space for biotechnology companies."
NY Times, February 2, 2012.



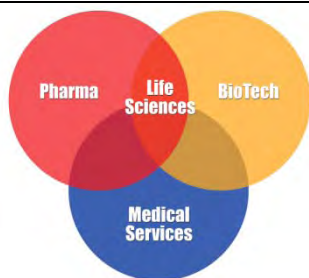
Allergan, Bridgewater, NJ
Leased 93,000-sf of space.
Investment: \$12 million
New Jobs: 400 (apx)

Novo Nordisk, Plainsboro, NJ
Expansion: \$215 million project for its new 770,000-sf headquarters. + 100 new jobs.

Clinilabs, Eatontown, NJ
Expansion: Setup new unit that provides clinical drug development services to the pharmaceutical industry.

Accupac, Lakewood, NJ
Capital Investment: \$1.7M
New Jobs: +300

Data Source: Quarterly Census of Employment & Wages,
2010 Second Quarter, NJLWD
Prepared by:
New Jersey Department of Labor and Workforce Development
Bureau of Labor Market Information
August 2011



SOUTHERN NJ

BIO-PHARMACEUTICAL LIFE SCIENCES CLUSTER

RECENT ECONOMIC DEVELOPMENT PROJECTS

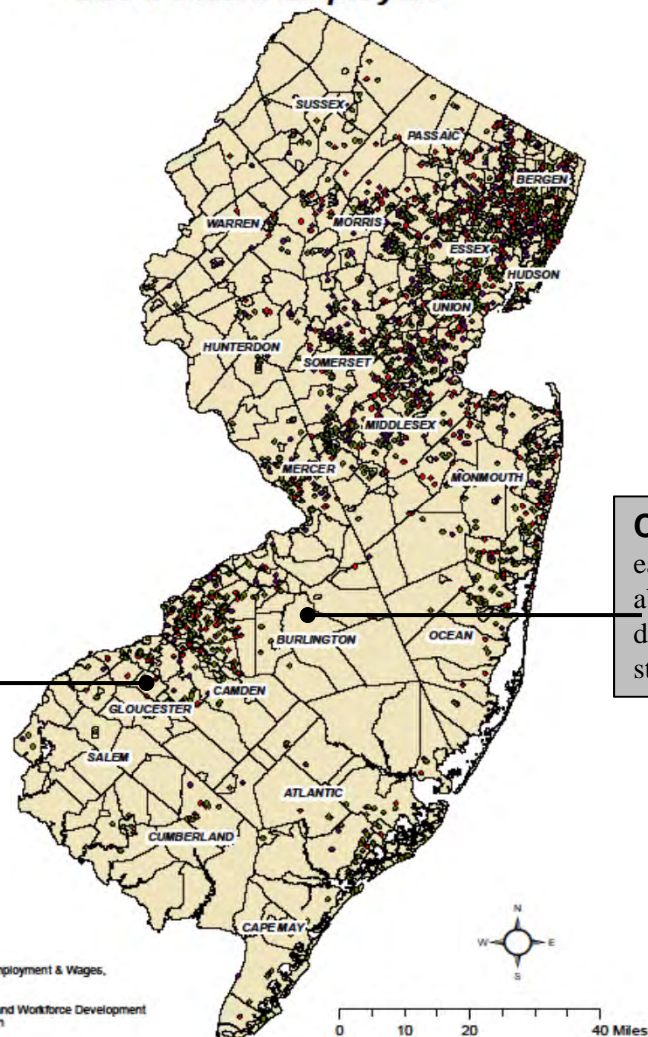
Rowan University, Glassboro, NJ

Formed a new school for Biomedical Studies: The School of Biomedical Sciences operates in conjunction with the colleges of Science & Mathematics and Engineering.

It's addressing a growing need in the region for programs that will prepare students for careers in healthcare-related fields, from pharmacy to biomedical engineering.

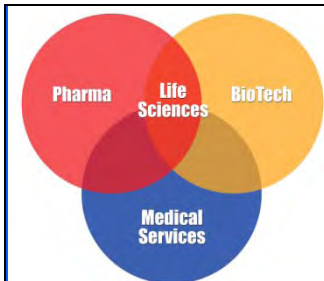
This school will contribute toward developing the educated workforce that businesses need if they are going to relocate to South Jersey."

Life Science Employers

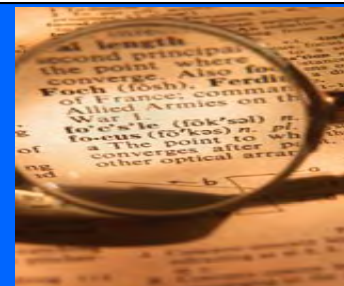


CRI Lifetree, a company specializing in early stage research focused in pain, human abuse liability, psychiatry, neurology and diabetes, opened a new state-of-the-art, early stage research facility in Marlton, N.J.

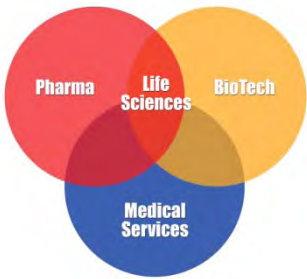
Data Source: Quarterly Census of Employment & Wages,
2010 Second Quarter, NJLWD
Prepared by:
New Jersey Department of Labor and Workforce Development
Bureau of Labor Market Information
August 2011



NEW JERSEY BIO-PHARMACEUTICAL LIFE SCIENCES CLUSTER

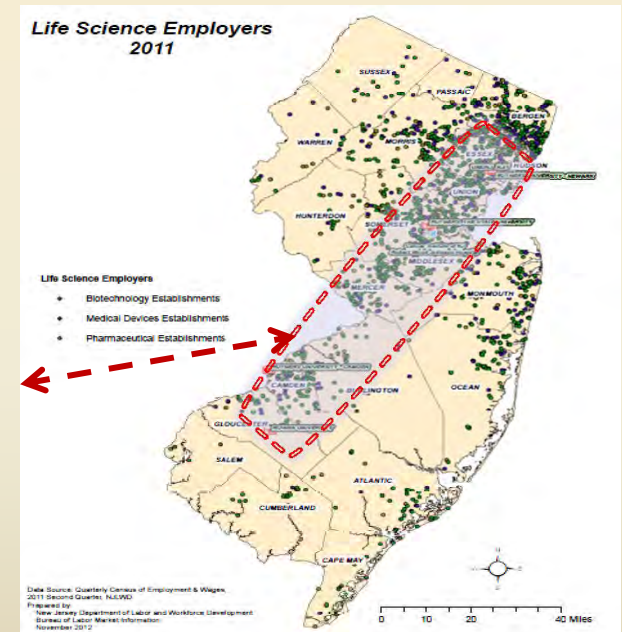


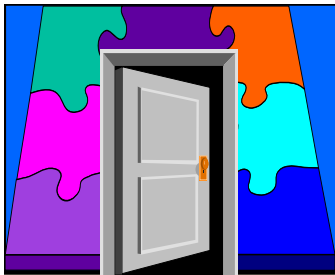
Updates Relevant to New Jersey's Bio-Pharmaceutical Life Sciences Cluster



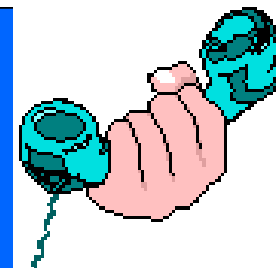
NEW JERSEY *RELATED* CLUSTER DEVELOPMENT UPDATES

- ❖ **Changing paradigm** is effecting the way these type of companies are making decisions involving what products / services will be researched and developed.
- ❖ **Changing 'cluster' business approach** is having significant influences of where these companies are (re-)locating operations.
 - *New Jersey has taken steps to address these changes such as developing greater partnerships between educational institutions (e.g. Rutgers University / New Jersey Institute of Technology / Rowan University) -- along with promoting and supporting stronger collaboration of hospitals & other related businesses – to ensure the success of the cluster's employment & business growth in the Garden State!*
- ❖ **NEW JERSEY IS STILL a KEY PLAYER** nationally, as well as globally, providing incredible value to the Biopharmaceutical Life Science Cluster.





Contact Information



New Jersey Department of Labor & Workforce Development

<http://lwd.dol.state.nj.us/>

PO Box 057

Trenton, NJ 08625-0057

Labor Planning & Analysis

http://lwd.dol.state.nj.us/labor/lpa/LMI_index.html

John Ehret –Labor Market Analyst

Telephone: (609)984-9683

Email: John.Ehret@dol.state.nj.us