

MY FORECAST
Mount Holly NJ

NWS Forecast Office Philadelphia/Mt Holly

Philadelphia/Mt Holly
Weather Forecast Office



Fair

44°F

7°C [Get Detailed info](#)

Today



Increasing Clouds

High: 47°F

Tonight



100%

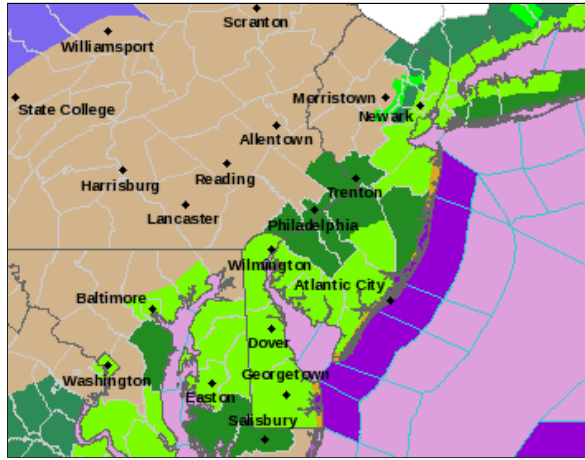
Heavy Rain and Windy

Low: 43°F

[change location](#)

- [Current Hazards](#)
- [Current Conditions](#)
- [Radar](#)
- [Forecasts](#)
- [Rivers and Lakes](#)
- [Climate and Past Weather](#)
- [Local Programs](#)

Click a location below for detailed forecast.



Last Map Update: Fri, Jan. 12, 2024 at 10:50:18 am EST

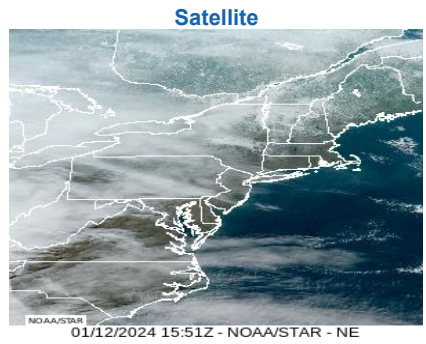
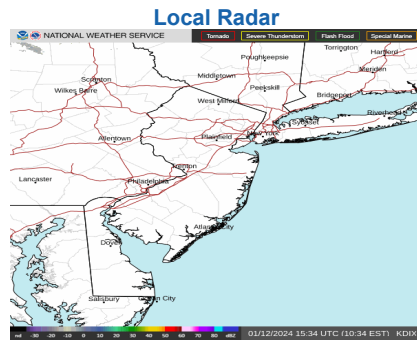
[Watches, Warnings & Advisories](#)

- [High Wind Warning](#)
- [Storm Warning](#)
- [Coastal Flood Warning](#)
- [Flood Warning](#)
- [Gale Warning](#)
- [Winter Weather Advisory](#)
- [Coastal Flood Advisory](#)
- [High Surf Advisory](#)
- [Small Craft Advisory](#)
- [Wind Advisory](#)
- [Local Area Emergency](#)
- [Coastal Flood Watch](#)
- [Flood Watch](#)
- [Hazardous Weather Outlook](#)

Weather Story

Hazard	Impacts	Location	Timing
Heavy Rain/ Flooding	0.8 to 1.8 inches is forecast. Flooding will be exacerbated for rivers that will still be in flood. Urban and small stream flooding.	Entire region. The most significant river flooding potential for northern NJ and southwest PA.	Heaviest rain Friday night. River flooding risk continues through Saturday and beyond.
Wind	Southeast to south winds Friday night, turning southwest to west on Saturday. Tree damage and power outages possible, especially near the coast and near Delaware Bay.	Inland areas: Wind gusts of 40 to 50 mph expected. Coastal areas: Wind gusts of 50 to 65 mph expected. Some gusts near 60 mph possible along the coast.	Strongest winds occurring Friday night, however strong winds continue into Saturday.
Marine	Gale to storm force wind gusts of 45-60 mph, strongest over the ocean. Dangerous seas building to 15 to 18 ft, lower on DE Bay.	All Atlantic coastal waters of New Jersey and Delaware, including Delaware Bay.	Friday night. High seas and gales persist through at least Saturday night.
Coastal Flooding	Widespread minor to moderate coastal flooding. Greatest threat for moderate coastal flooding will be along the local Delaware River and Barnegat Bay.	New Jersey and Delaware coasts, local Delaware Bay, Chesapeake Bay, and Delaware River and tributaries.	Coastal flooding is expected beginning with the high tide Friday night through Saturday.

Weather Forecast Office Philadelphia/Mt Holly | Presentation Created 1/12/2024 6:41 AM



Text Product Selector (Selected product opens in new window)

Latest Text Products Issued by PHI ▼



[Radar](#)



[Current Weather](#)



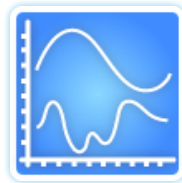
[Rivers & Lakes](#)



[Satellite](#)



[Forecast Maps](#)



[Hour by Hour Forecast](#)



[Winter Weather](#)



[Graphical Hazards](#)



[Coastal Flood](#)



[Marine Forecasts](#)



[Text Products](#)



[Climate Information](#)



[Skywarn](#)



[Submit Storm Report](#)



[Weather Event Archives](#)



[Forecast Discussion](#)



[Emergency Managers](#)



[Briefing Page](#)