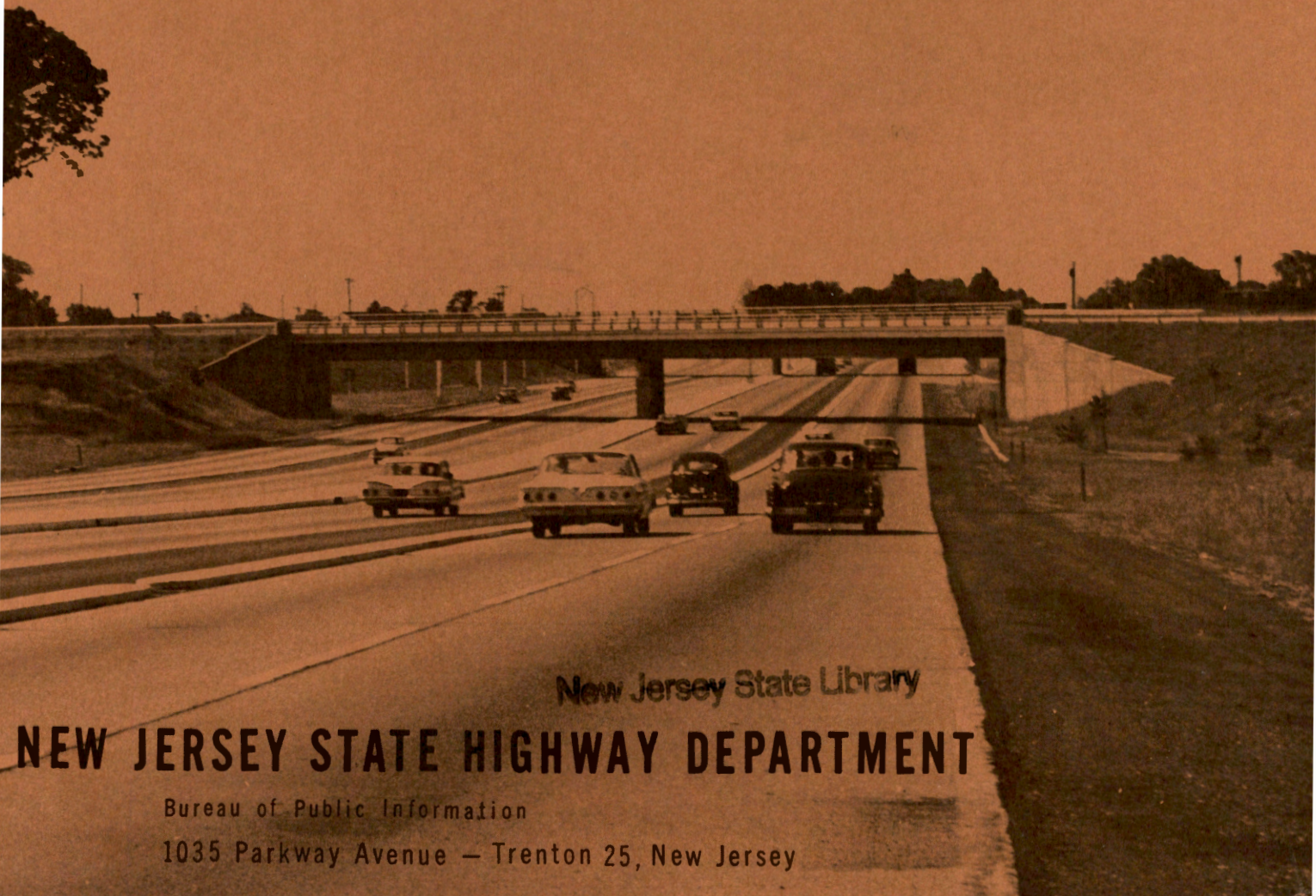


RS28  
629

# CONSTRUCTION CONTRACTS

1954 - 1962

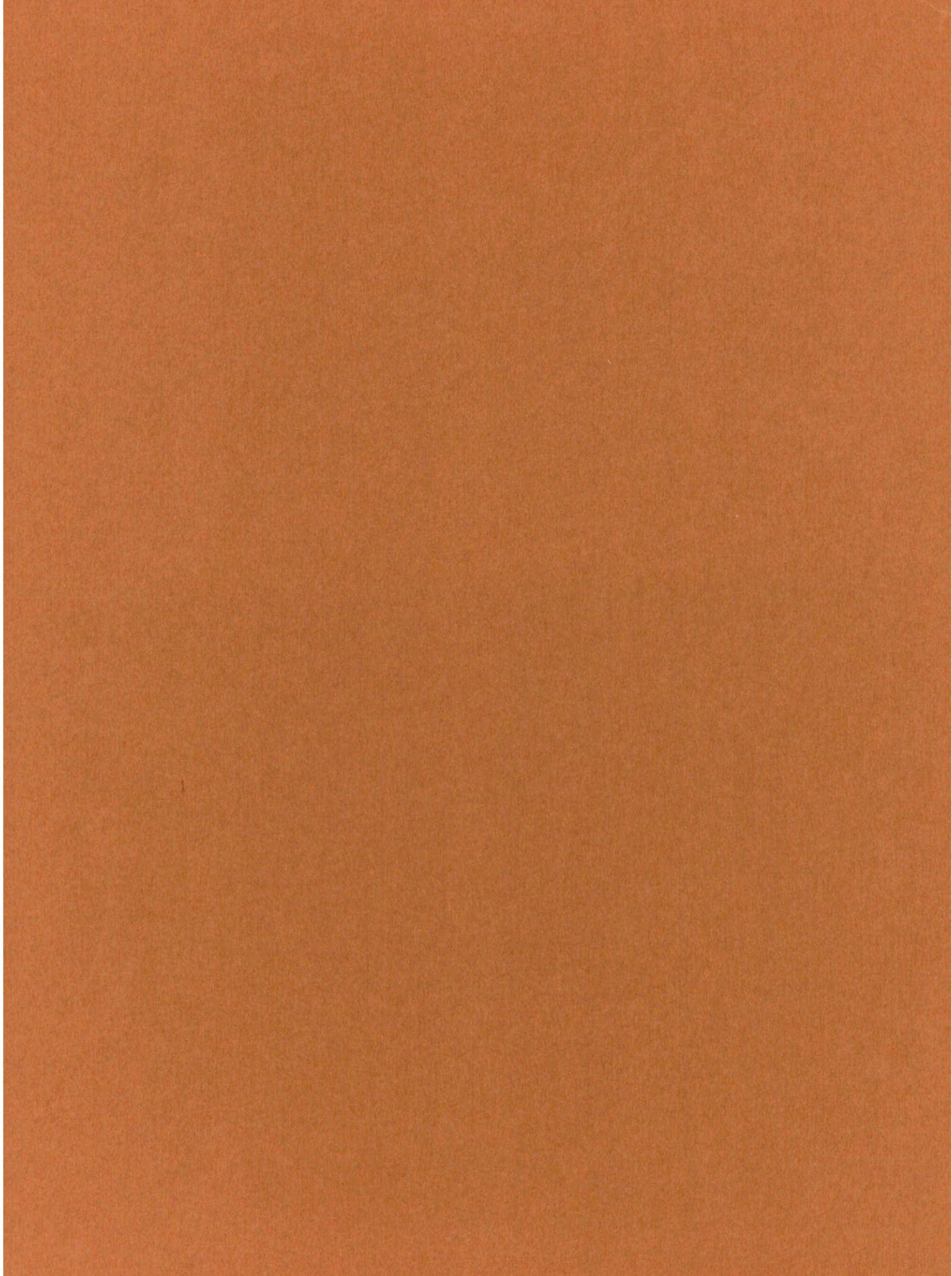


New Jersey State Library

**NEW JERSEY STATE HIGHWAY DEPARTMENT**

Bureau of Public Information

1035 Parkway Avenue — Trenton 25, New Jersey

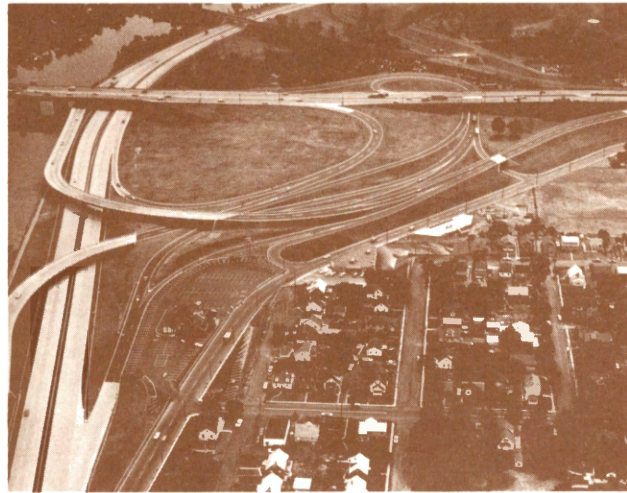


# **CONSTRUCTION CONTRACTS**

**1954 - 1962**



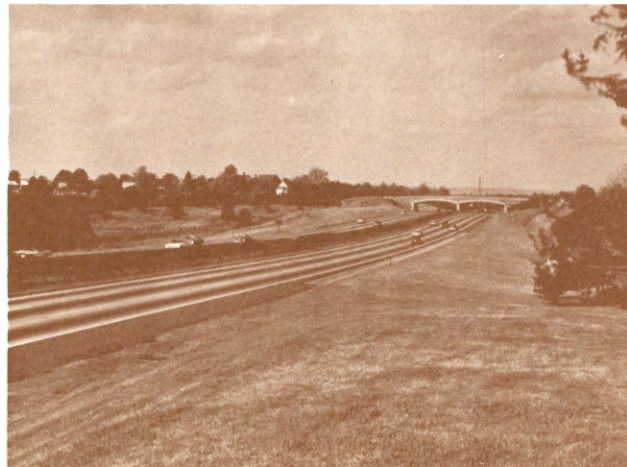
▲ Interstate Rt. 80, Morris County



▲ Rt. 3 & 21 Interchange, Passaic County  
Rt. 29, Mercer County ▼



Rt. 4 Parkway, Middlesex County ▼



**T**he New Jersey State Highway Department presents this record of construction contracts which have been completed in the last eight and a half years or are in progress at the present time. Many of these have added new routes to the State Highway System; others have provided added safety and convenience to existing routes, which had become overloaded as traffic volumes increased.

Despite the progress of recent years, the job remaining to be done will require a substantial outlay in both time and money before State Highways and local road systems of New Jersey are equal to the demands being placed upon them. However, the task can be accomplished with the necessary ingredients available.

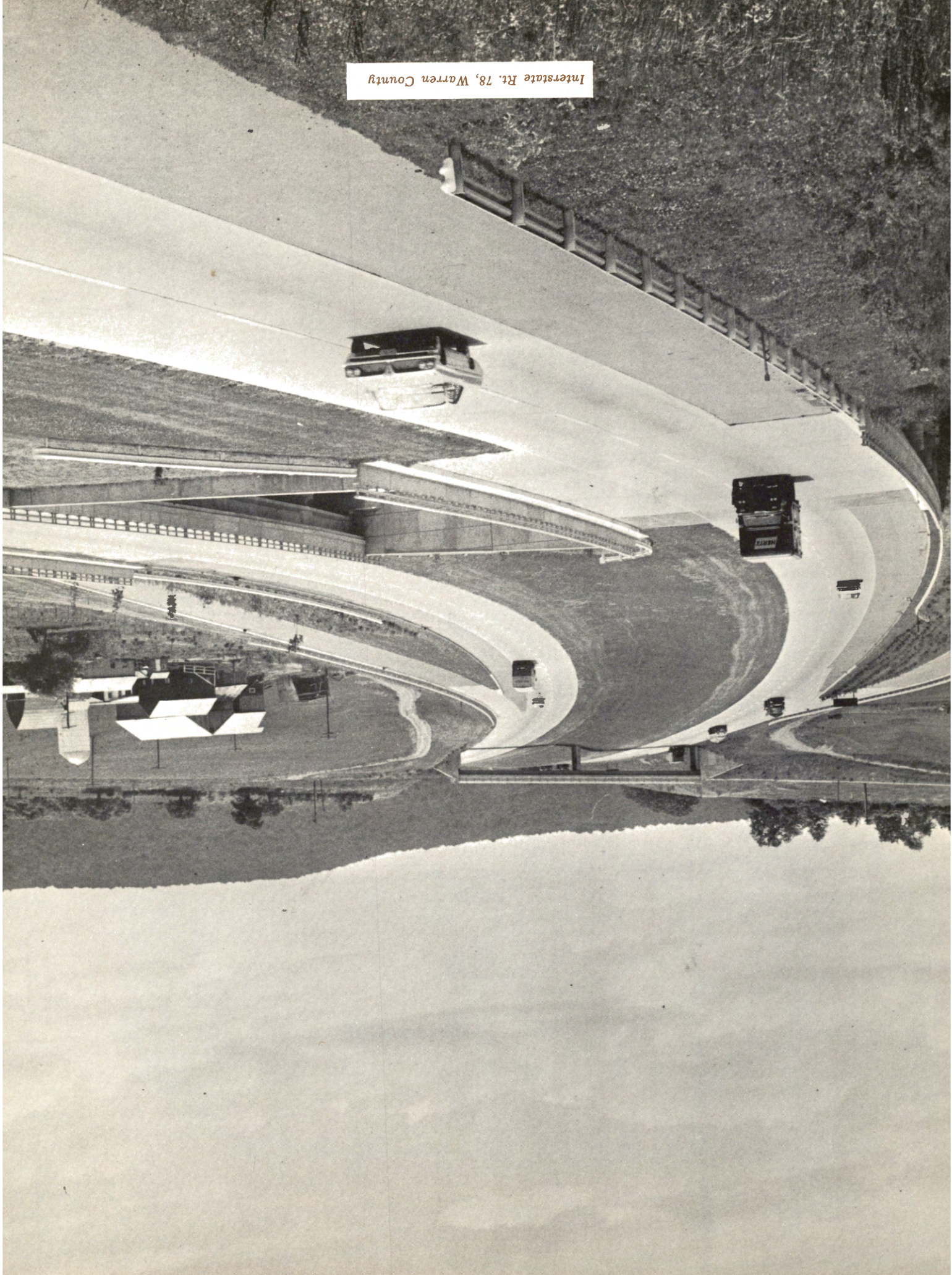
A look at the record will indicate what can be done even with limited resources.

**Dwight R. G. Palmer**

Commissioner

New Jersey State Highway Department

Interstate Rt. 78, Warren County



# CONSTRUCTION PROJECTS

1954 . . . 1962

YEAR	NO. PROJECTS	LENGTH MILES	COST
1954	42	52.232	\$ 21,103,679.08
1955	43	69.090	24,092,059.90
1956	41	71.8011	14,853,569.58
1957	47	60.148	32,299,290.66
1958	49	49.087	25,609,947.18
1959	63	110.6482	47,209,078.75
1960	47	98.818	38,636,667.86
1961	63	97.770	62,757,257.33
1962	32	51.243	26,513,875.65
Under Construction	59	104.7833	115,597,054.26
	<u>489</u>	<u>765.6206</u>	<u>\$ 408,672,480.25</u>

## SUMMARY BY TYPE

### Projects Completed:

Planting	24 Projects	79.164 miles
Demolition	9 Projects	6.771 miles
Drainage	19 Projects	17.7171 miles
Construction	378 Projects	557.1852 miles
	<u>430 Projects</u>	<u>660.8373 miles</u>

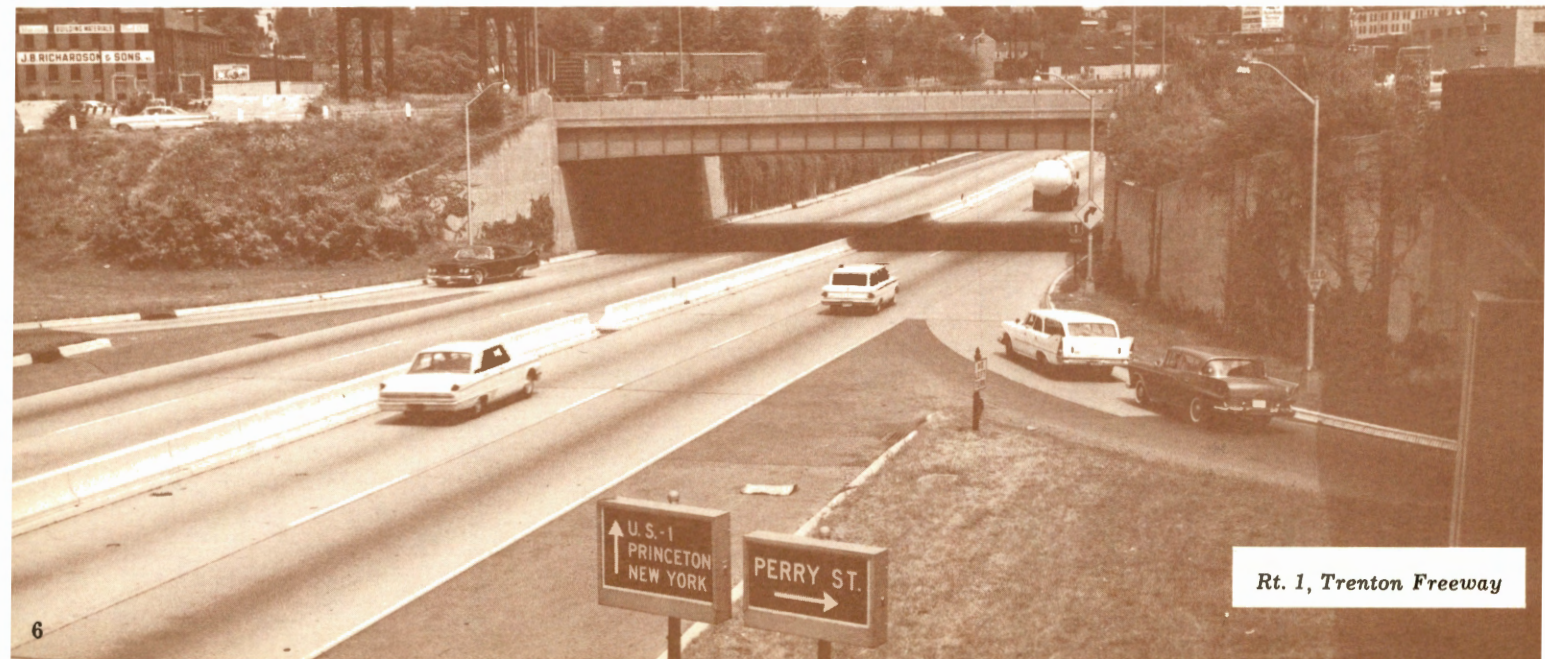
### Projects Underway:

Demolition	2 Projects	1.507 miles
Construction	57 Projects	103.2763 miles
	<u>59 Projects</u>	<u>104.7833 miles</u>

The mileages shown in this report refer to "project length"—that is, the center line distance from one end of the contract to the other without regard to the number of lanes, ramps, or similar appurtenances.

## 1954 PROJECTS

ROUTE	LOCATION	COUNTY	TYPE	LENGTH	COMPLETED	COST
1	Perry to Strawberry	Mercer	Planting	2.031	5-10-54	\$ 32,896.42
1	Perry to Strawberry	Mercer	Grading & Paving	1.960	5-24-54	1,517,792.11
1&9	Broadway to Communipaw	Hudson	Reconstruction	.959	10-22-54	198,987.35
4	Galloping Hill Road	Union	Planting	.966	3-15-54	41,223.00
9	Absecon Creek	Atlantic	Bridge & Approaches	.152	11-12-54	127,274.13
18	Tunison Road	Middlesex	Reconstruction	.165	10-13-54	64,890.17
21	High St. to Broad	Essex	Paving Bridges	.221	4-20-54	834,850.71
21	Clifton Av. to High St.	Essex	Demolition	.370	3-29-54	33,683.75
21	Oriental to Chester	Essex	Viaduct & Road	.566	11-19-54	1,495,635.02
22	Bloy Street	Union	Overpass	1.266	5-31-54	146,723.42
22	Blue Star Drive	Union	Planting	.999	6-23-54	9,559.53
22	Thompson Av.	Sommerset	Bridge & Approaches	.338	5-24-54	225,652.23
24	Stewartsville Heights	Warren	Reconstruction	.892	9-15-54	251,904.84
24N	Pburg to Lopatcong Twp.	Warren	Dualization	1.344	6- 2-54	10,903.41
25	Hackensack Bridge	Hudson	Removal		54	274,590.00
26	D & R Canal Bridge	Mercer	Bridge Floor		54	36,830.70
26	Howes Lane to Cran. Crs.	Middlesex	Drain Improvement	.375	9-27-54	44,042.94
29	Byram to Kingwood	Hunterdon	Grading & Drainage	3.024	7-30-54	1,011,359.03
29	Raven Rock to Byram	Hunterdon	Grading & Drainage	1.593	9-27-54	643,113.85
30	Clarks Branch Rt. 73	Camden	Reconstruction	5.584	9-22-54	501,360.80
30	Rt. 206 to Clarks Branch	Atlantic	Reconstruction	5.081	7-15-54	606,789.07
35	Point Pleasant Inland Br.	Ocean	Reconstruction		7- 7-54	28,885.91
42	Washington & Jefferson	Camden	Demolition Buildings	1.403	12-15-54	128,247.80
46	Teaneck Rd. to Grand Ave.	Bergen	Dualization	1.053	12- 1-54	672,425.78
47	High St. & Main St.	Cumberland	Reconstruction	.767	8- 6-54	227,253.73
49	Rio Gr. to Grassy So. Br.	Cape May	Reconstruction	2.279	7-25-54	556,973.69
49	Bridgeton	Cumberland	Relocation	.894	10-12-54	417,384.84
130	Woodbury Cr. to Berkley	Gloucester	Construction	3.895	9-10-54	1,651,204.45
130	Salem Canal Bridge	Salem	Draining & Paving	.072	7-30-54	224,192.26
130	Airport Circle	Camden	Safety Revision	1.144	3-24-54	898,858.54
130	Blacks Cr. Br. Appr.	Burlington	Reconstructing Approach	.236	6-25-54	65,392.85
130	Nehonsey Brk. to Timb. Cr.	Gloucester	Construction	.211	4-16-54	1,451,750.46
130	Repaupo to Raccoon Cr.	Gloucester	Construction	2.502	9- 7-54	937,632.35
130	Berkley to Rapaupo Road	Gloucester	Construction	3.746	7- 9-54	1,641,579.67
206	Cedar Branch Bridge	Atlantic	Construction	.027	6- 2-54	28,354.81
PIP	Hillside Ave. Alpine	Bergen	Grading & Bridges	1.931	12-23-54	1,987,648.15
PIP	Boro of Alpine	Bergen	Paving	1.780	12-23-54	489,298.00
PIP	Bayview to Palisade Ave.	Bergen	Paving	1.373	10-13-54	1,226,777.92
PIP	Ft. Lee & Alpine	Bergen	Demolition		7-15-54	13,600.00
PIP	Fort Lee to Bayview Ave.	Bergen	Grading	.673	10-18-54	226,775.47
	Various Locations	Middlesex	7 Bridge Floors		54	34,400.70
	Decatur Ave. Ocean Hwy.	Atlantic	Drainage Improvement	.360	7- 7-54	85,979.21
				52.232		\$21,103,679.08



Rt. 1, Trenton Freeway

## 1955 PROJECTS

ROUTE	LOCATION	COUNTY	TYPE	LENGTH	COMPLETED	COST
1	Strawberry to Whitehead	Mercer	Grading, Paving & Br.	.965	11-30-55	\$2,067,862.81
1&9	Hackensack River Bridge	Hudson	Paving Approaches	1.085	4- 1-55	910,262.74
4	Rt. US 9 Rt. US 22	Middlesex	Widening	12.941	10- 1-55	1,691,523.61
4	Lafayette to Jones Road	Bergen	Bar Curb	1.420	10-13-55	59,029.90
9	NJ Tpk. Bunns Lane Conn.	Middlesex	Connect.	.028	9-23-55	6,829.90
17	Ramapo Central Spring	Bergen	Underpass		55	411,880.37
17	NY Line to Ramapo River	Bergen	Planting	1.142	11-22-55	9,746.00
17	NY Line to Ramapo River	Bergen	Dualization	1.123	8-18-55	875,822.66
18	Albany to Bishop	Middlesex	Construction	.699	11- 5-55	548,574.67
18	Bishop to Carpenter	Middlesex	Viaduct & Approaches	.490	9-17-55	1,271,616.11
20	Rt. 4 to 10th Ave.	Passaic	Reconstruction	.658	11- 9-55	210,548.54
21	Clay to Riverside	Essex	Reconstruction	1.637	11-30-55	989,420.12
21	Herbert to Riverside	Essex	Bridges	.455	1-14-55	922,517.25
22	Westfield to Washington	Somerset	Paving	8.706	12-31-55	729,745.77
22	Straw Church to Rt. 24	Warren	Dualization	1.446	5- 5-55	352,899.68
23	Germantown Rd. W. Milford	Passaic	Channel.	.274	6- 1-55	24,911.44
23	Sussex to Colesville	Sussex	Bridge Construction	.568	5-15-55	130,522.77
27	Woodbridge to Bridge	Middlesex	Widening	3.468	12-30-55	677,732.34
29	Parkside to Calhoun	Mercer	Construction	1.581	12-31-55	1,873,277.99
29	Byram to Kingwood Station	Hunterdon	Paving	3.832	11- 1-55	156,312.04
35	Maple to Navesink River	Monmouth	Widening	.500	9-26-55	102,911.40
36	Broadway to Oceanport	Monmouth	Paving	1.068	10-14-55	159,299.24
38	Haddonfield to Coopers	Camden	Safety Revision	.956	8-30-55	41,995.30
42	11th Ave. to 4th Ave.	Camden	Drainage	.065	8-20-55	67,028.40
42	Washington & Ferry	Camden	Demolition	1.297	8-30-55	20,427.75
44	Woodbury Cr. to Berkley	Gloucester	Planting	3.895	5- 1-55	10,159.55
45	Dwight to Collins	Camden	Overpass	.651	10-24-55	301,320.66
46	Hackensack River Br. Main St.	Bergen	Reconstruction	.355	6- 1-55	254,160.40
46	Hackensack to Drakeston	Morris	Dualization	2.210	12-31-55	1,348,130.39
46	Industrial Avenue	Bergen	Safety Revision	.641	1- 5-55	159,099.98
58	DL & WRR to High St.	Essex	Paving & Bridges	.574	8-22-55	1,383,176.59
66	Rt. 35 to Wayside Road	Monmouth	Dualization	1.158	12-31-55	292,686.98
69	Oxford	Warren	Reconstruction	1.229	5-10-55	397,952.27
72	Manahawkin Bridge	Ocean	Substructure		55	1,350,149.27
72	Hilliard to Ship Bottom	Ocean	Grading	1.313	12-31-55	1,015,124.55
87	Brigantine Bridge	Atlantic	Reconstruction	.107	5-15-55	162,688.56
9W	Linwood to Lemoine	Bergen	Grading, Paving & Br.	.638	7-15-55	1,639,533.58
164	Schiller to Rt. US 1&9	Union	Grading	1.749	11- 7-55	242,604.39
202	Rt. 10 to Rt. 46	Morris	Grading & Bridges	2.760	6-15-55	1,079,695.06
US9	Silverton to White Oak	Ocean	Drainage & Shoulders	1.694	6-15-55	35,072.60
PIP	Ft. Lee Englewood	Bergen	Planting	2.046	7- 1-55	40,197.00
PIP	Boro of Alpine	Bergen	Planting	1.666	6- 7-55	29,622.27
	Port St. Br. over CRR	Essex	Remove Bridge		55	37,987.00
				69.090		\$24,092,059.90

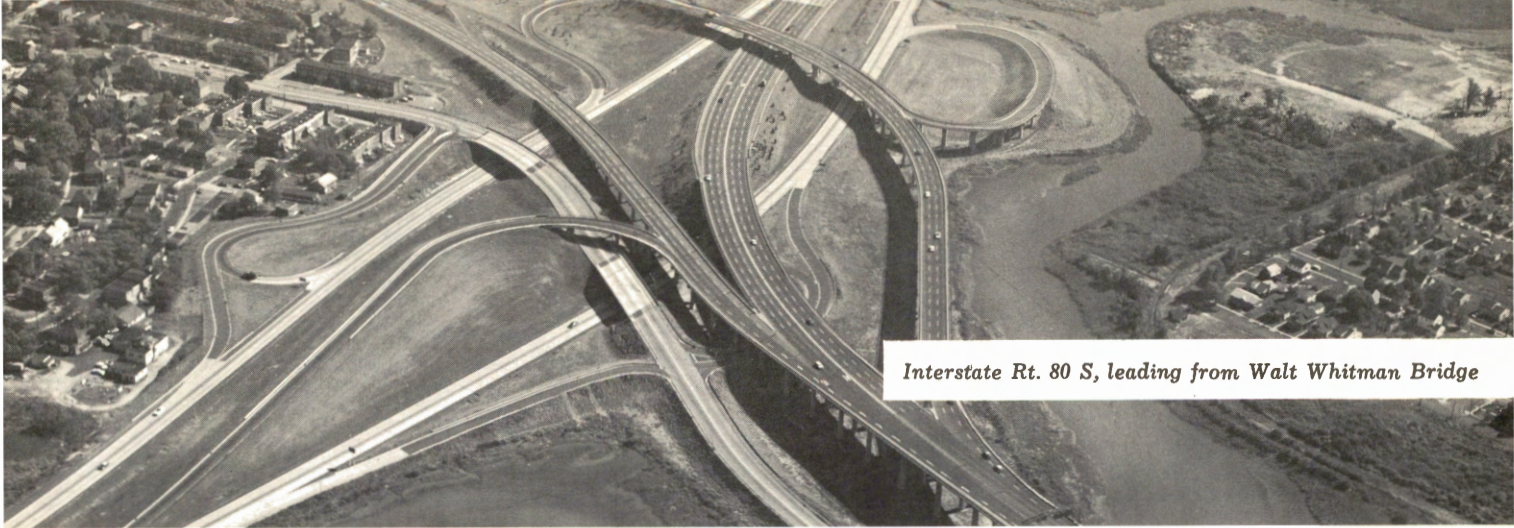


Rt. 18 Freeway, New Brunswick

## 1956 PROJECTS

ROUTE	LOCATION	COUNTY	TYPE	LENGTH	COMPLETED	COST
1	Amboy Ave.	Middlesex	Safety Revision	.665	12-31-56	\$767,735.04
1&9	Fairview Ave.	Bergen	Safety Revision	.051	10-10-56	29,074.20
1&9	Pulaski Skyway	Hudson	Median Divider	2.332	6- 3-56	229,058.59
1&9	Pulaski Skyway	Hudson	Surfacing	2.922	6- 7-56	37,749.89
1&9	Wilson Ave, Newark	Essex	Viaduct		56	53,800.00
3	Hackensack River Bridge	Bergen	Bridge Fender		56	33,243.52
3	10th Ave. 4th Ave.	Passaic	Dualization	1.093	8-18-56	388,046.11
4	Rt. 9 to Burke Parkway	Middlesex	Center Island	11.716	11-21-56	152,505.47
4	Rt. 9 to Burke Parkway	Middlesex	Planting	11.716	12-31-56	60,407.13
4	Grand to Hackensack River	Bergen	Barrier	.786	8-23-56	37,548.04
4	Hackensack Lafayette	Bergen	Barrier	2.260	8-17-56	94,638.51
9W	Linwood to Lemoine Ave.	Bergen	Planting	.465	6-26-56	10,065.95
20	4th Ave. 1st. Ave.	Passaic	Widening	.447	8-11-56	148,991.43
21	Oriental Street	Essex	Planting	1.145	11-26-56	4,413.14
22	Empire to Mountain Ave.	Essex	Reconstruction	7.970	7-20-56	907,686.82
22	Empire St. Newark	Essex	Viaduct		56	6,572.25
26	Market to Ohio Ave.	Mercer	Safety Revision	2.242	9-21-56	63,358.65
30	Absecon Boulevard	Atlantic	Construction	.278	5- 8-56	34,823.65
35	Cheesequake Bridge	Middlesex	Abutment		56	22,448.24
42	N-S Freeway	Camden	Grading, Paving Bridge	.791	9- 1-56	3,345,114.62
42	N-S Freeway	Camden	Paving	1.073	9-28-56	1,804,457.43
43	Ancora Hospital	Camden	Interchange Revision	2.096	5-16-56	123,692.61
44	Berkley Road to Rt. 322	Gloucester	Planting	6.036	4- 5-56	20,597.50
46	Kessler & Bank St.	Bergen	Overpass		6-20-56	47,335.03
46	Saddle River Twp.	Bergen	Drain. Improvement	.0341	4- 3-56	27,375.00
46	Pt. Murray to Pequest River	Warren	Reconstruction	.887	10-24-56	109,715.96
46	Palisades to Pk. & Fort Lee	Bergen	Resurfacing Bridges	.866	7- 6-56	29,887.99
46	Peckman R. to Mountain	Passaic	Widening	.901	8-18-56	44,474.72
48	Jonathans to Shore Rd.	Atlantic	Reconstruction	2.131	8-31-56	385,070.18
58	Orange to Passaic River	Essex	Planting	.928	11-26-56	8,869.25
70	Timber Guard Rail	Burlington	Replace Guard Rail	1.218	8-15-56	29,158.42
70	Manasquan Bridge	Monmouth	Pile Repair		56	64,731.60
72	Manahawkin Bridge	Ocean	Super Structure		56	3,200,979.57
87	Huron Ave. Approaches	Atlantic	Interchange Revision	.508	4-13-56	147,327.61
87	Absecon to Brigantine	Atlantic	Construction	.574	12- 5-56	118,001.23
88	Herbertsville Road	Ocean	Safety Revision	.145	10-22-56	25,498.75
202	Music Circus to Bridge St.	Hunterdon	Reconstruction	1.049	7-17-56	91,371.50
206	Chester to Rodgers Road	Morris	Widening	1.036	12-14-56	190,539.62
US1	Jersey to Tonnele Ave.	Hudson	Reconstruction	1.346	2- 1-56	629,357.91
PIP	Boro of Alpine	Bergen	Planting	1.541	6-26-56	18,317.65
PIP	Boro of Alpine	Bergen	Grading, Paving Bridge	2.053	10-17-56	1,309,528.80
				71.8011		\$14,853,569.58

*Manahawkin Bridge, Ocean County*



Interstate Rt. 80 S, leading from Walt Whitman Bridge

## 1957 PROJECTS

ROUTE	LOCATION	COUNTY	TYPE	LENGTH	COMPLETED	COST
1&9	Tonnele to Wallis	Hudson	Paving	.759	8- 1-57	\$461,425.52
1&9	Wolf Creek Bridge	Bergen	Construction	.086	7-19-57	136,200.84
3	Rt. 46 & Valley Road	Passaic	Safety Revision	.677	12- 3-57	544,540.88
4	12 Bridges	Union	Fencing		57	48,917.58
4	Jones to Bridge Plaza	Bergen	Barrier	.876	8-16-57	39,715.38
10	Pleasant to Prospect	Essex	Reconstruction	.760	5-23-57	149,073.18
17	Ramapo to Franklin Tpk.	Bergen	Planting	2.540	12-11-57	24,069.50
17	Franklin Turnpike	Bergen	Grading, Paving Bridge	.499	12-11-57	826,802.95
17	Rt. 46 to Rt. 4	Bergen	Reconstruction	3.598	5- 2-57	560,714.27
17	Ramapo River to Franklin Tpk.	Bergen	Dualization	2.708	6-24-57	2,413,816.61
18	New Brunswick Tpk.	Middlesex	Safety Revision	.179	6- 8-57	56,147.27
20	10th St. to 4th Ave.	Passaic	Dualization	1.093	1-16-57	388,046.11
22	Chapel Is. to Terrill	Somerset	Construction	3.605	5- 8-57	407,354.72
23	Franklin to Hardyston	Sussex	Widening	1.978	8-20-57	332,829.71
23	Hardyston & Wantage	Sussex	Widening	1.062	10-28-57	201,326.54
27	Albany St. Bridge	Middlesex	Bridge Resurfacing		57	24,565.04
28	Somerset to Grove	Somerset	Resurfacing	.498	3- 8-57	19,913.07
30	Parkway to Bull Run Road	Mercer	Widening - Resurfacing	3.790	2-22-57	546,891.69
30	Absecon Boulevard	Atlantic	Reconstruction	3.760	8- 9-57	162,242.03
35	Sylvania to Sunset	Monmouth	Safety Revision	.646	7-18-57	82,017.73
38	Chapel to Columbia	Camden	Widening & Interchange	1.883	8-22-57	898,287.04
38	Haddonfield Road	Camden	Planting	.246	11-15-57	4,602.00
42	Reading RR. Gloucester	Camden	Overpass		57	323,607.28
42	Freeway Delaware River Bridge	Camden	Grading Paving Approach	1.832	3-31-57	7,740,851.24
42	Morgan Boulevard Rt. 130	Camden	Grading Paving Drainage	1.728	5-22-57	1,353,991.05
42	Kendall to Newton Cr.	Camden	Dualization	.902	6-14-57	609,224.10
42	Lower Landing to Coles	Camden	Grading, Paving Bridge	1.386	6- 7-57	657,568.69
42	Browning to Landing	Camden	Grading Paving Bridge	3.655	8- 8-57	4,672,382.31
42	Rt. 130 to Station 323	Camden	Grading Paving Bridge	1.509	11-29-57	598,222.78
46	Riverview Drive & Union	Passaic	Resurfacing	.395	5-14-57	82,469.02
52	4 Bridges Ocean City	Atlantic	Bridge Reconditioning		57	352,453.57
69	Bull Run to Pennington	Mercer	Widening Resurfacing	1.150	9-20-57	185,580.30
69	Clinton to Washington	Hunterdon	Widening	2.323	6- 4-57	206,569.02
70	Culvert Kenilworth Ave.	Camden	Construction	.064	12- 3-57	19,285.80
71	Shark River Bridge	Monmouth	Deck Reconditioning		57	45,133.24
72	Manahawkin to Ship Bottom	Ocean	Trestles		57	1,451,043.49
130	Fairview to Brooklawn	Camden	Widening Dual	1.648	12-20-57	482,264.46
130	Jamesburg Road	Middlesex	Construction	.115	11-25-57	58,997.03
151	Memorial Ave.	Camden	Revision	.108	8-19-57	29,086.17
202	Rt. 10 & Rt. 46	Morris	Paving	2.794	5-31-57	1,318,210.61
206	Chester & Gladstone	Morris	Widening	1.280	1- 7-57	149,738.96
206	Columbus to Chambers	Burlington	Resurfacing & Widening	3.568	11- 7-57	887,302.55
208	Maple & Lincoln	Bergen	Interchange	.284	12-30-57	497,631.74
PIP	Boro of Alpine	Bergen	Fence	.370	12-27-57	7,233.82
PIP	Boro of Alpine	Bergen	Paving	1.476	1- 7-57	1,655,287.25
PIP	Fort Lee to Palisades	Bergen	Paving Ped. Overpass	2.034	8-29-57	560,742.87
46	Diamond to Bloomfield	Morris	Resurfacing	.284	7- 9-57	24,913.65
				60.148		\$32,299,290.66

## 1958 PROJECTS

ROUTE	LOCATION	COUNTY	TYPE	LENGTH	COMPLETED	COST
1	NYS & WRR Jersey City	Hudson	Reconstruction		58	\$ 56,000.00
1	Bevan to Palisade Ave.	Hudson	Balustrade		58	30,806.74
1	B. Basin & Provinceline	Mercer	Safety Revision	.025	6-12-58	104,715.95
1	Ryders Lane to Raritan	Middlesex	Safety Revision	.818	11-29-58	237,980.26
1&9	City of Newark	Essex	Revision	.253	9-17-58	27,076.55
4	W. Saddle Rv. Rd. Rt. 17	Bergen	Widening	1.236	1-10-58	1,113,041.80
4	Hackensack Ave.	Bergen	Revision	.205	1- 6-58	77,669.40
10	Morris Tpk.	Morris	Ramp Revision	.195	7- 2-58	50,848.60
17	Ramapo to Franklin Tpk.	Bergen	Dualization	2.708	10-17-58	2,413,816.61
22	Somerset & Watchung	Somerset	Bridge	.620	4-21-58	815,989.27
22	Washington to Vaux Hall	Union	Reconstruction	6.756	8-28-58	847,317.34
23	Wantage Twp.	Sussex	Reconstruction	.815	5-27-58	367,095.25
25	Assiscunk Cr. Br.	Burlington	Sidewalk		58	6,505.65
25A	Hamilton to Harrison	Hudson	Paving	.143	9-29-58	66,249.38
27	Howes Lane to Sanford	Middlesex	Reconstruction	2.027	11-21-58	364,638.08
27	New to Main	Middlesex	Reconstruction	.323	5- 6-58	70,922.80
27	D R Canal to Heathcote	Middlesex	Reconstruction	.044	7-16-58	68,999.44
28	Somerville	Somerset	Bridge	.101	10-31-58	134,727.77
29	Hermitage Ave. Trenton	Mercer	Overpass		58	127,470.62
29	Aberfeldy to Parkside	Mercer	Planting	1.329	11- 8-58	21,421.50
29	Aberfeldy to Parkside	Mercer	Grading, Paving, Bridges	1.329	12-29-58	1,119,670.15
29	Scudders Falls	Mercer	Bridge Substructure		58	167,925.00
29	Scudders Falls	Mercer	Bridge Superstructure		58	460,825.00
33	Hamilton to Winslow	Mercer	Reconstruction	.426	6-11-58	67,736.79
33	Rt. 35 Garden St. Pky.	Monmouth	Reconstruction	3.642	10-31-58	658,489.55
35	Victory Bridge	Middlesex	Fender Revision		58	9,110.00
35	Wampun & Parkers Crk.	Monmouth	Bridges	.083	9-13-58	80,510.06
37	Mathis Br. Seaside Hgts.	Ocean	Interchange	2.455	12- 5-58	2,878,150.88
38	Marter Ave.	Burlington	Safety Revision	.102	1-22-58	25,284.80
40	Jonathans Thorofare	Atlantic	Reconstruction	.667	6- 6-58	397,689.87
41	Pennsauken Creek Br.	Camden	Bridge	.032	4-22-58	72,027.72
42	N-S Freeway	Camden	Grading, Paving, Bridges	3.111	12- 3-58	2,341,167.21
42	N-S Freeway	Camden	Grading, Paving, Drain.	4.174	10-24-58	1,648,628.13
45	Fcnwick to Pettit Lane	Salem	Repaving	1.113	8-15-58	150,671.66
46	Hook Mt. to Bloomfield	Morris	Reconstruction	1.157	11-10-58	132,647.15
46	Manunka ChuncK	Warren	Reconstruction	.410	9-22-58	106,210.70
69	Parkway to Pennington	Mercer	Planting	4.844	6-12-58	7,874.00
72	Hilliard to S. Bottom	Ocean	Reconstruction	2.166	12- 1-58	748,757.83
78	Bloomsbury & Bethlehem	Hunterdon	Bridge Construction		58	1,635,750.70
78	Greenwich Ch. to Rt. 22	Warren	Bridge Relocation		58	1,559,382.80
295	Belle to Copley	Camden	Grad., Pav., Bridges	.659	12- 2-58	2,144,273.39
130	Marlot Pike & Drezel	Camden	Safety Revision	.215	7-10-58	71,748.80
202	Rt. 10 to Smith Rd.	Morris	Planting	2.354	12- 5-58	18,819.25
206	Bedens Brook	Somerset	Bridge	.190	8-11-58	238,190.90
206	Woodside to Lawnwood	Sussex	Repaving	.290	8- 6-58	58,925.48
208	Van Winkle to Goffle	Passaic	Bridges	.408	7-14-58	662,700.67
208	Erie RR & Blvd.	Bergen	Viaduct	.217	5-28-58	906,828.29
439	Broad to Pulaski	Union	Resurfacing	.589	7-18-58	48,989.50
	Union Twp.	Union	Grading, Paving, Drainage	.856	8-11-58	187,667.89
				49.087		\$25,609,947.18



Rt. 37, approaches and Seaside Park

## 1959 PROJECTS

ROUTE	LOCATION	COUNTY	TYPE	LENGTH	COMPLETED	COST
1	Oakland Ave. Bridge	Hudson	Reconstruction		59	\$ 26,637.38
1	State Pol. Bck. Stouts La.	Middlesex	Reconstruction	3.087	8-30-59	633,127.29
1	Forrestal Interch.	Mercer	Bridge Grading, Paving	2.908	11- 1-59	905,695.77
1	Stouts to Cozzens Lane	Middlesex	Reconstruction	6.249	12-22-59	1,558,820.19
1	M. V. Station Alexander	Mercer	Grading, Paving, Bridges	3.466	9-26-59	700,072.80
1	Cozzens to PRR Br.	Middlesex	Reconstruction	.319	6-26-59	205,232.75
1&9	Rt. 3 Traffic Circle	Hudson	Channel	.222	5- 1-59	164,860.54
3	8th St. to Rt. 20	Hudson	Resurfacing	.602	10- 2-59	111,265.09
3	Grove to Passaic	Passaic	Widening	2.818	7-27-59	779,923.68
4	Spring Valley Rd.	Bergen	Reconstruction	1.870	4- 1-59	571,374.22
10	Rt. 53 to Salem St.	Morris	Reconstruction	3.608	4-24-59	372,083.33
10	Whippany Morehausetown	Morris	Grading, Paving	1.635	4-25-59	338,689.46
17	Fairview Ave. Ramp	Bergen	Construction	.139	11-16-59	56,751.16
17	Midland Ave.	Bergen	Underpass	.592	5-27-59	599,767.41
17	Belleville to Rutherford	Hudson	Resurfacing	2.731	9-19-59	128,835.55
18	Pine to Spring Valley	Middlesex	Reconstruction	2.505	10- 1-59	757,053.44
18	Old Br. Cir. to Pine St.	Middlesex	Grading, Paving, Bridge	1.198	11- 6-59	772,329.04
20	Crooks to Broadway	Passaic	Dual Widening	1.248	9-11-59	398,744.98
20	Paterson to Moonachie	Bergen	Construction	.217	9- 8-59	32,524.50
21	Williams to Roosevelt	Essex	Construction	1.438	4-29-59	5,226,609.62
23	Peckman Brook Br.	Essex	Reconstruction	.028	12-10-59	146,506.21
23	Steenykill & Clove Rd.	Sussex	Reconstruction	2.472	11-25-59	612,501.80
27	Albermarle & Plainfield	Union	Widening & Bridge	.0602	5-13-59	37,053.44
29	Glenside Ave.	Union	Drainage	.086	5-15-59	17,085.60
30	Taunton to Wellington	Camden	Reconstruction	5.148	10- 2-59	964,424.01
30	Clements Bridge Rd.	Camden	Reconstruction	.240	11-13-59	165,448.10
30	Wellington to Bell	Camden	Reconstruction	4.005	9- 9-59	748,321.14
33	Winslow Ave.	Mercer	Drainage	.419	9-17-59	29,038.25
35	Ship Channel Bridges	Cape May	Bridge Decks		59	175,510.01
35	Lewis & Broad	Monmouth	Connect	.101	3-26-59	37,789.15
41	Palmyra Br. Rt. 130	Burlington	Paving, Grading	1.792	9-29-59	592,596.03
42	B H Pike Turnersville	Camden	Grading, Paving, Drain.	3.967	6-26-59	1,576,814.25
45	Woodbury Creek	Gloucester	Construction	.071	7-13-59	31,174.26
45	Red Bank to Cooper	Gloucester	Paving, Widen Bridge	.407	4- 9-59	49,565.95
46	Huyler Ave.	Bergen	Reconstruction	1.861	11-10-59	411,562.84
46	Union Blvd. to Valley	Passaic	Reconstruction	2.535	9- 5-59	378,202.04
60	Hollywood to N. J. Tpk.	Salem	Dual & Bridge	1.717	9-30-59	1,038,126.45
69	Parkway to Bull Run Rd.	Mercer	Grading, Paving, Bridge	3.790	9-28-59	546,891.69
73	Detour Haddonfield Rd.	Camden	Grading	.934	10-19-59	98,475.10
77	CRR of N. J. to Rt. 49	Cumberland	Reconstruction	1.896	9-21-59	447,912.97
80	RR. Ave. to Dunn St.	Bergen	Demolition	.351	7- 1-59	16,184.00
80	Dunn to Queen Ann	Bergen	Demolition	.160	7- 1-59	6,882.00
80	Queen Ann to Teaneck	Bergen	Demolition	.318	7- 1-59	7,762.00
80	Rockaway Rd. to Rt. 46	Morris	Grading, Paving, Bridges	2.434	12-11-59	5,571,248.94
80	Union Tpk. to Mt. Hope	Morris	Grading, Paving, Bridge	2.282	5-11-59	4,199,057.46
80	DL & W Western R.R. Br.	Morris	Reconstruction	.199	9-25-59	1,068,122.31
78	Town of Clinton	Hunterdon	Construction	2.356	4-13-59	3,622,329.50
295	E-W Freeway	Camden	Grading, Paving, Bridges	1.932	6-24-59	2,419,988.63
295	Penn Reading SS Lines	Camden	Underpass	.036	3-18-59	326,923.07
295	E-W Freeway	Camden	Grading, Paving, Bridges	2.228	4- 9-59	1,903,491.42
130	Market to L Timber Creek	Camden	Reconstruction	.475	7-10-59	31,001.10
167	Mullica River Bridge	Burlington	Removal		59	18,750.00
202	Beechwood to Huyler Rd.	Somerset	Dual & Bridge	1.805	9- 1-59	675,362.84
202	Huyler to E of CRR	Somerset	Reconstruction	1.273	9- 1-59	704,539.68
202	CRR to Somerville Circle	Somerset	Reconstruction	2.050	9- 1-59	648,640.53
208	Goffle to Grandview	Passaic	Bridge, Grading, Paving	1.134	1-31-59	1,023,668.23
208	Helena to Colonial Rd.	Bergen	Grading, Paving, Bridges	1.879	11-12-59	798,754.41
208	Grandview to Helena	Bergen	Construction	2.008	10-15-59	390,821.25
322	Decatur Ave.	Atlantic	Drainage	1.306	12-10-59	244,752.56
322	Rt. 50 to McKee City	Atlantic	Reconstruction	3.872	8-19-59	874,047.13
611	Delaware Water Gap	Warren	Excavating	.129	12-15-59	180,722.50
PIP	F L Br. Pl. to Palisades	Bergen	Fence	2.930	4-24-59	41,237.50
PIP	F L Br. Pl. to N. Y. Line	Bergen	Planting	11.110	11-18-59	39,394.20
				110.6482		\$47,209,078.75

Interstate Rt. 287, Middlesex County

## 1960 PROJECTS

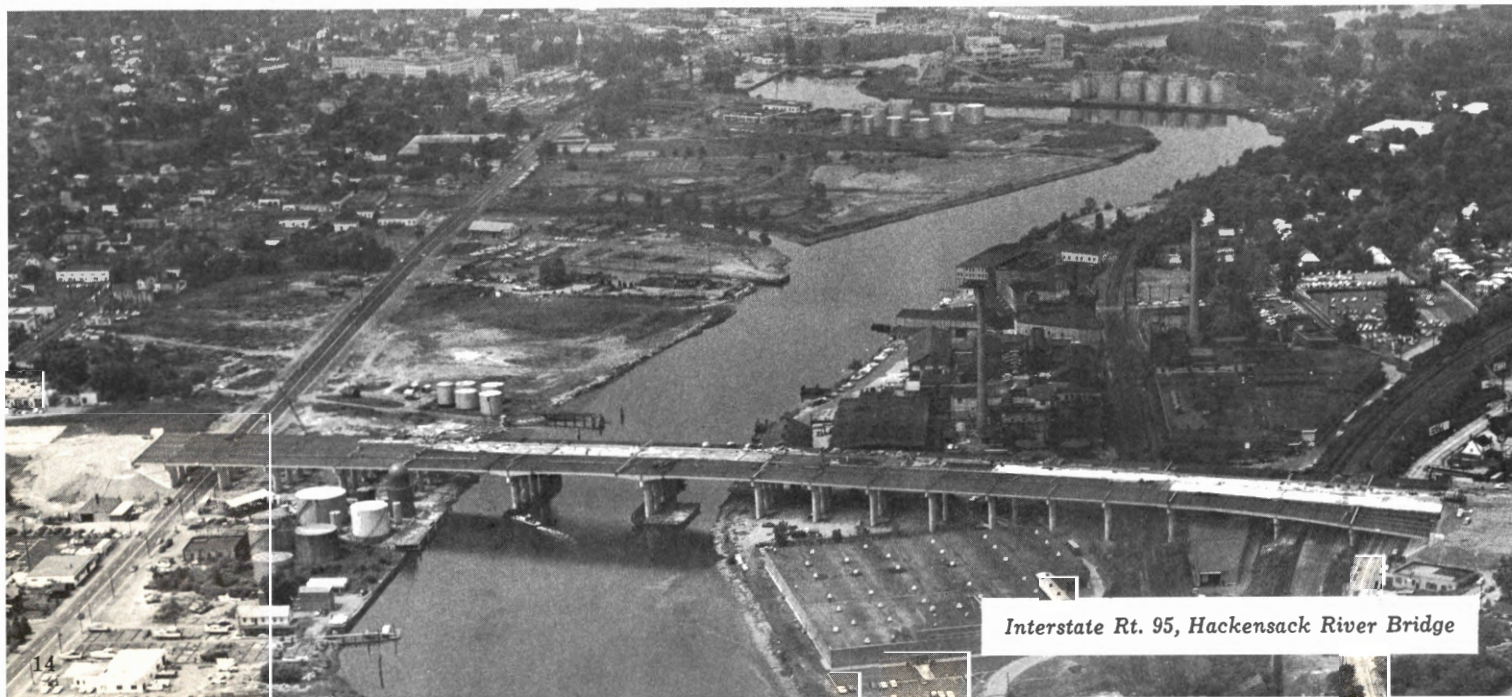
ROUTE	LOCATION	COUNTY	TYPE	LENGTH	COMPLETED	COST
1	Alexander to S. Police	Middlesex	Planting	2.908	2-10-60	\$ 7,498.42
1	Lake to M. V. Station	Mercer	Reconstruction	2.756	12-29-60	898,405.59
1&9	Newark	Essex	Grad., Pav., Bridges	.622	11-31-60	959,421.57
1&9	Overpeck to Jones Rd.	Bergen	Reconstruction	2.292	12-22-60	209,913.90
1&9	Rahway to Lawrence St.	Union	Construction	.803	1- 7-60	33,183.20
1&9	Wilt to De Groat	Bergen	Drainage	.273	11-19-60	71,619.75
3	Lincoln Tunnel Appr.	Hudson	Abutments		60	28,180.60
4	Jones Road	Bergen	Reconstruction	1.861	11- 9-60	236,977.11
4	Chestnut Street	Union	Construction	.312	3-29-60	106,974.98
7	WittPenn Belleville Brs.	Hudson	Bridge Repair		60	47,015.10
9	P. Pleasant & Seaside	Ocean	Drain. Improvement	6.354	8-22-60	501,350.36
9	Cape May Canal Br.	Cape May	Construction	1.058	9-19-60	1,334,033.78
10	Newark & Mt. Pleasant Tpk.	Morris	Construction	3.662	11-14-60	863,868.40
10	Salem Street	Morris	Underpass	.370	10- 8-60	406,570.00
10	Livingston to Whippany	Morris	Construction	3.818	12- 8-60	826,971.50
12	Baptist Town to Crk.	Hunterdon	Construction	1.385	10-14-60	307,160.87
15	Burnt Meadow Brook	Morris	Grading, Paving, Bridge	.249	12- 8-60	132,630.12
17	Century Road	Bergen	Construction	1.378	8-29-60	499,081.73
18	Old Br. to W. Amhurst	Middlesex	Drainage	.869	1- 8-60	284,851.46
18	Spring Valley to Rt. 9	Middlesex	Construction	.999	12- 8-60	428,699.26
21	Roosevelt to Highfield	Essex	Construction	1.333	5-17-60	2,779,746.15
22	Roseberry & Bates	Warren	Revision	.612	11-15-60	197,585.13
23	Claremont Ave. & Rt. 46	Essex	Reconstruction	4.928	12- 6-60	294,133.73
29	Raven Rock to Byram	Hunterdon	Grading, Paving, Brs.	1.818	6-29-60	552,892.60
30	11th St. to Kaighn Ave.	Camden	Reconstruction	1.743	10-21-60	342,507.81
35	Shark River Bridge	Monmouth	Excavating		60	86,198.74
35	Matawan Creek Br.	Monmouth	Bridge Deck		60	44,674.12
35	Victory Bridge	Middlesex	Fender Repair		60	8,422.04
36	Rt. 35 to Oceanport Ave.	Monmouth	Dualization	2.401	12-17-60	348,508.86
38	Church Rd. to Marter Ave.	Camden	Dualization	5.294	10- 7-60	1,678,269.65
71	Main to Park	Monmouth	Reconstruction	.687	6-13-60	239,343.49
71	Whale Pond to Oceanport	Monmouth	Widen Br. Approaches	.372	5- 6-60	148,411.98
73	Pennsauken Twp.	Burlington	Dual Wid.	1.792	3- 7-60	592,596.03
78	Still Valley Rd. CRR of N. J.	Warren	Delineats	14.311	10- 4-60	7,812.89
78	CRR to Mulhockaway Creek	Hunterdon	Grading, Paving, Brs.	4.948	10-28-60	6,535,796.54
80	Mt. Hope to Dover Rd.	Morris	Overpass	.334	9-21-60	305,018.94
80	Rt. 20 Slaughterdam Rd.	Bergen	Grading, Paving, Bridge	1.381	11-18-60	2,805,966.41
80	Howard Blvd. Rt. 15	Morris	Grading, Paving, Bridges	3.985	9-27-60	6,662,452.87
287	Raritan River Bridge	Middlesex	Construction	.394	7-28-60	4,123,245.83
130	City of Burlington	Burlington	Drainage	1.751	9-15-60	182,979.60
130	Coopertown to Cinnaminson	Burlington	Grading, Paving, Bridges	6.043	11-18-60	1,040,463.62
202	Flemington to Somerville	Hunterdon	Planting	7.441	12- 6-60	16,089.12
206	Lawnwood to Ryerson	Sussex	Reconstruction	.182	7- 1-60	38,496.22
208	Boro of Franklin Lakes	Bergen	RR Bridge	.036	60	179,457.26
322	Weymouth Rt. 50	Atlantic	Dualization	5.063	11-18-60	1,038,024.23
Var.	Four Bridges	Monmouth	Redecking		60	173,073.20
PIP	Burnett Pr.	Bergen	Demolition		7- 1-60	30,093.10
				98.818		\$38,636,667.86

## 1961 PROJECTS

ROUTE	LOCATION	COUNTY	TYPE	LENGTH	COMPLETED	COST
1	Rt. 130 to College Farm Rd.	Middlesex	Interchange	1.208	6- 8-61	\$ 913,026.00
1&9	Ruby Ave. to Jones Rd.	Bergen	Barrier	1.638	3-29-61	72,373.92
3	Rutherford	Bergen	Deck Repair		61	157,297.16
3	Secaucus E. Rutherford	Bergen	Bridge Superstructure		61	2,382,970.00
4	Phelps Rd. & Lincoln Pl.	Bergen	Redeck		61	82,370.75
4	S. Van Brunt St.	Bergen	Widening	.183	11-10-61	22,786.71
7	2nd Rv. Br. Centre St.	Essex	Reconstruction	2.058	7-27-61	196,851.74
9	Linwood & Pleasantville	Atlantic	Drainage	.485	5- 4-61	38,719.71
9	Raritan St. & Grove Ave.	Middlesex	Reconstruction	.213	8-29-61	41,210.20
10	Livingston Cir. to Teed	Essex	Reconstruction & Bridge	1.730	12-11-61	569,126.05
10	Livingston to Whippany	Morris	Traffic Circle	3.818	4-27-61	826,971.50
17	Ridgewald Ave.	Bergen	Channel	3.306	4-21-61	80,764.33
17	Ridgewood Ave.	Bergen	Interchange Revision	1.591	11-15-61	651,710.86
18	Clifton Ave. to N. J. Tpk.	Middlesex	Reconstruction	1.647	4-21-61	1,708,648.81
20	South Dr. to Broadway	Passaic	Interchange Revision	.253	4-21-61	221,659.07
22	Empire to Sayre	Union	Construction	2.674	10-20-61	271,428.78
22	Rahway RR to Spring	Union	Widening	.552	9-13-61	74,285.90
22	Mulhockaway Creek	Hunterdon	Reconstruction	3.181	9- 7-61	161,339.31
22	Paramus & Hasbrouck	Union	Overpass		4-19-61	150,808.24
28	Coolidge Pl. Bridge RR	Union	Reconstruction Bridge	.290	10-20-61	612,087.53
28	East St. to Lincoln Ave.	Somerset	Reconstruction	2.469	11- 8-61	1,029,553.47
35	Eatontown to Spring	Monmouth	Reconstruction	2.173	3-13-61	446,330.03
35	Eisenhower to Curtis Pt.	Ocean	Grading, Paving, Bridge	5.385	9-29-61	783,066.83
35	Smith to N. J. Tpk.	Middlesex	Construction	2.475	11-29-61	864,269.81
36	Rt. 35 Cir. to Ocean Port.	Monmouth	Dualization	2.401	10-16-61	355,633.86
46	Baldwin & Beveryck Rd.	Morris	Interchange Revision	.273	7- 3-61	54,701.73
47	Armory Drive	Cumberland	Drainage	.926	12-31-61	103,426.96
49	Lower Penns Neck	Salem	Fender Repair		61	18,483.70
52	Somers Pt. to Ocean City	Atlantic	Deck Repair		61	144,294.78
54	Hammonton to Buena	Atlantic	Paving, Draining, Inter.	10.784	12-15-61	1,155,204.17
69	Back Brook Rocktown	Hunterdon	Reconstruction	1.416	7-12-61	239,182.39
71	Main to Ocean Ave.	Monmouth	Planting	.631	12- 1-61	3,573.00
73	Pennsauken Crk. Rt. 38	Burlington	Widening & Dual	3.194	8-11-61	1,286,272.48
78	Troy Village Briant Ave.	Union	Demolition		4- 5-61	17,458.00
80	Hackensack River Bridge	Bergen	Superstructure		61	2,889,000.00
80	Hackensack River Bridge	Bergen	Deck Rail		61	1,382,024.00
80	Rt. 46 to Landing Rd.	Morris	Bridges	.445	8-11-61	2,001,960.29
80	Green & Wesley Sts.	Bergen	Drainage	.284	10-13-61	718,141.17
80	Slaughterdam to Chobot	Bergen	Demolition Buildings	1.228	5- 4-61	27,725.30
80	Penna. to Passaic River	Passaic	Demolition Buildings	1.113	10-19-61	40,720.00
82	Lehigh Valley RR Br.	Union	Reconstruction	.255	10-20-61	392,426.77
95	Teaneck Cr. NRR of N. J.	Bergen	Drainage	1.243	9-30-61	6,560,204.36
95	Teaneck to Teaneck Ck.	Bergen	Excavation	.298	4- 1-61	728,356.05
95	Broad & Grand Ave.	Bergen	Construction Bridges	.495	10-27-61	1,557,304.55
102	Still Valley to CRR	Warren	Grad., Pav., Bridges	3.977	10- 9-61	3,159,459.34
129	Del. Riv. Br. to Scotch	Mercer	Construction	2.773	9-29-61	4,306,873.06
130	Route 73 Interch.	Camden	Reconstruction	.835	10-31-61	2,166,831.29
130	Camden to Burlington	Camden	Reconstruction	6.353	12-22-61	1,124,634.60
169	Constable to Pt. Breeze	Hudson	Grading, Paving, Bridges	2.022	7- 7-61	1,560,385.83
206	Musconetcong River	Sussex	Drainage	.174	6-19-61	19,828.05
208	Br. over NYS & WRR	Bergen	Bridge	.036	10-20-61	201,552.06
208	Russell & Summit	Bergen	Interchanges	.744	7- 1-61	1,054,578.51
208	Maple to Goffle	Bergen	Overpass	1.521	8-15-61	517,390.09
287	Rt. 22 Lehigh Val. RR	Somerset	Grading, Paving, Bridges	2.154	11-30-61	4,990,261.42
287	Canal Rd. to River Rd.	Somerset	Grading, Paving, Bridges	2.631	6-22-61	3,987,324.07
295	Rt. 47 Rt. 130	Gloucester	Grading, Paving, Bridges	1.765	5-31-61	3,152,802.96
322	8th St. to Weymouth Rd.	Atlantic	Reconstruction	4.710	9-12-61	968,615.56
440	Clendenny to Danforth	Hudson	Reconstruction	1.321	7- 6-61	284,106.25
Var.	River Edge Ft. Lee	Bergen	Overpass		61	88,822.00
Var.	Four Bridges	Atlantic	Redecking		61	108,535.69
22	Rt. 22 Phillipsburg	Warren	Redecking		61	36,867.73
80S	Browning to Copley	Camden	Reconstruction	3.157	4- 4-61	2,925,051.28
	Defense Access Rd.	Burlington	Reconstruction	1.282	8-25-61	67,587.27
				97.770		\$62,757,257.33

## 1962 PROJECTS (As of June 30)

ROUTE	LOCATION	COUNTY	TYPE	LENGTH	COMPLETED	COST
1	Penna. RR to Rt. 130	Middlesex	Reconstruction	1.814	5-62	\$ 367,307.21
1&9	Meadow St. to Maple Ave.	Union	Reconstruction	1.831	6- 5-62	33,583.15
1&9	Tonnele to Fairview	Hudson	Reconstruction	6.189	12- 5-61	835,891.30
1&9	Plainfield & Old Post	Middlesex	Safety Revision	2.195	4-10-62	474,429.55
3	Hackensack Riv. Br.	Hudson	Substructure	.637	7-62	2,633,187.25
4	Hackensack Ave.	Bergen	Safety Revision	.465	4- 6-62	175,283.41
4	Phelps Rd. & Lincoln Place	Bergen	Pedestrian Bridge		7-62	82,370.75
21	Highfield to So. Pky.	Essex	Construction	1.929	1-10-62	7,726,991.12
21	Clifton	Passaic	Sign Supt.		62	19,125.00
22	Mountain Ave.	Somerset	Underpass	.718	4-13-62	878,275.67
22	Ped Br. at Rt. US 22	Warren	Pedestrian Bridge		6-62	36,898.20
24	Millburn to 43rd St.	Union	Reconstruction	1.493	5-28-62	93,485.50
25	Poor Farm to Fords Ave.	Middlesex	Safety Revision	.700	3-60	246,779.54
28	Cuckel's Brook Bridge	Somerset	Reconstruction		9-62	70,315.95
29	Flemington Circle to Raritan River	Hunterdon	Reconstruction	2.313	9-29-60	667,575.84
29	Parkside to Calhoun	Mercer	Planting	1.254	4-11-57	19,167.10
35	Eatontown to Shrewsbury	Monmouth	Reconstruction	1.543	3-59	255,622.75
35	Victory Bridge	Middlesex	Guard Rail		62	17,345.25
40	County Rd. 540 to Rt. 48	Salem	Dual & Bridge	3.932	7-30-62	1,760,764.89
50	Cedar Swamp Creek	Cape May	Bridge	.577	1- 1-62	169,585.67
70	Rt. 41 Pennsauken Creek	Camden	Reconstruction	2.947	5- 3-62	186,249.81
70	Cuthbert to Haddonfield	Camden	Resurfacing	1.193	5-26-62	399,963.60
72	Ship Bottom Hilliard	Ocean	Resurfacing	1.894	11- 2-61	14,060.00
80	Rt. 46 to Rt. 53	Morris	Grading & Paving	1.096	4-24-62	1,581,908.66
80	State St. to Penna. Ave.	Passaic	Demolition	.531	6-30-62	105,550.00
80	Hackensack River Bridge	Bergen	Substructure	.450	2-62	2,698,035.00
95	Rt. 46 to Rt. 80 & 95	Bergen	Drainage	.897	4-62	3,070,916.00
130	Dwight to Laurel Ave.	Camden	Drainage	.122	4-62	179,769.85
202	Marginal Road	Morris	Reconstruction	0.414	5-62	11,927.10
206	Mansfield to Columbus	Burlington	Grading, Paving, Bridges	3.242	5- 9-60	1,118,004.35
206	Ross Corner	Sussex	Channel	.151	5-62	28,216.87
206	Manville Rd. & Bridge St.	Somerset	Interchange Revision	0.452	7-62	139,428.21
206	Ryerson Ave. to Halsted St.	Sussex	Reconstruction	0.333	7-62	48,308.75
295	Woodbury Creek to Rt. 322	Gloucester	Planting	9.931	6-20-62	18,016.45
295	Electric Installation	Cam.-Glou.	Electric Installation			349,535.90
				51.243		\$26,513,875.65

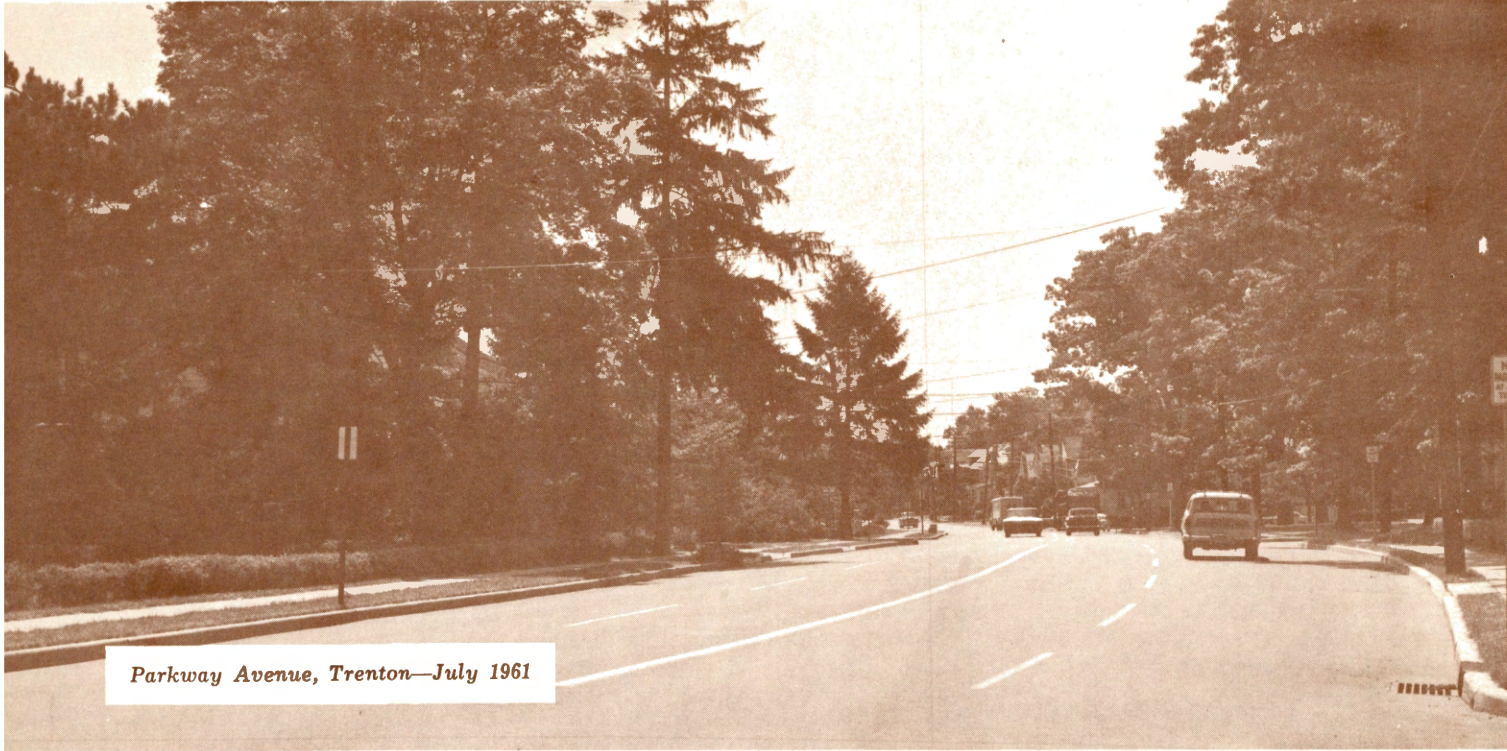


Interstate Rt. 95, Hackensack River Bridge

## PROJECTS UNDERWAY AS OF JUNE 30, 1962

ROUTE	LOCATION	COUNTY	TYPE	LENGTH	COMPLETED	COST
1	Plainfield Ave. to Rar. Riv. Br.	Middlesex	Grading, Paving, Bridges		1.3	\$ 1,130,038.40
3	Hackensack River Bridge	Bergen	Superstructure			2,382,970.00
4 Pky.	Guard Rail & Barrier Curb	Mid.-Union	Guard Rail		1.271	127,985.10
1&9	Foundry to Neck Lane	Essex	Reconstruction		.434	39,245.50
US 9	Adelphia Rd. to Toll Gate	Monmouth	Dualization		1.7883	823,474.12
9W	Relocation-Alpine	Bergen	Grad., Pav. Drain		0.365	227,419.20
9,35,50	Atl., Cape May, Burl. Monmouth	Various	Bridge Redeck			107,875.40
10	Pleasant Valley to Rahway	Essex	Grading, Paving		.104	78,213.68
18	N. J. Tpk. to Raritan River	Middlesex	Reconstruction & Br.		2.191	696,344.87
18	Raritan River RR to Fountain St.	Middlesex	Grading, Paving, Bridge		.550	1,137,978.74
22	Middle Brook to Wash. Ave.	Somerset	Interchange Revision		4.166	1,058,750.47
22	Bloy from Harding Ter.	Union	Reconstruction Bridge		.649	572,631.60
23	Clove to N. Y. State Line	Sussex	Grading Bridge		.465	234,464.00
27	Culvert at Stillwell	Somerset	Construction		.055	47,262.65
27	Rt. 35 to Stiles Street	Union	Reconstruction		2.643	828,881.67
27	Miltonia to Eliz. Line	Union	Reconstruction		2.599	825,872.30
33	Garden St. Pky. Rt. 34	Monmouth	Reconstruction		1.219	256,141.45
35-34	School House Rd. to Rt. 33	Monmouth	Dualization		8.190	1,857,442.20
38	Haddonfield-Sorrel Horse Rd.	Camden	Reconstruction		0.24	78,680.80
42	Greentree Rd. to Whitman Dr.	Gloucester	Widen		0.286	86,869.91
46	Clinton Rd. & Plymouth Street	Essex	Channel		0.369	165,117.75
78	CRR to Mulhockaway	Hunterdon	Paving		4.978	1,659,982.14
80	Lakeview to River Dr.	Passaic	Grading, Paving, Bridge		.749	5,463,398.10
80	Mill to State Street	Passaic	Demolition		.574	61,400.00
80	Rt. 46 Landing Rd. Inter.	Morris	Grading & Paving		3.014	3,454,379.77
80	Landing to Howard Blvd.	Morris	Grad. & Pav.		1.800	2,119,138.02
80	River Dr. Blvd.	Bergen	Bridges		.633	3,078,403.50
80	Main to NYS & WRR	Bergen	Grading, Paving, Bridges		.996	3,503,802.03
80	Senate to Main Street	Bergen	Grading, Paving, Bridges		.908	5,119,937.54
80	Hackensack & Lodi RR	Bergen	Grading, Paving, Bridges		1.518	4,678,771.82
80	Paterson	Passaic	Demolition		.933	20,100.00
80	Hackensack River Bridge	Bergen	Superstructure			1,382,024.00
80	Hackensack River Br. to Teaneck Crk.	Bergen	Grading, Paving, Bridges		1.229	3,913,509.52
95	No. RR NJ to Grand Ave.	Bergen	Bridge		.276	3,745,206.00
95	Teaneck Crk. to Rt. 4	Bergen	Grading, Draining, Br.		2.334	6,652,267.05
95	Rt. 4 to Fletcher Ave.	Bergen	Grading, Paving, Bridges		.624	10,964,952.95
130	Bordentown Interchange	Burlington	Construction		1.253	1,191,746.92
130	Camden & Pennsauken	Camden	Reconstruction		.890	611,390.02
130	Garfield & Fed Streets	Camden	Pedestrian Bridges			60,492.60
130	Chelton Ave. to Union Ave.	Bur.-Camden	Reconstruction & Barrier		10.2	2,747,584.20
202	Raritan River to Beechwood	Hunterdon	Dual & Bridges		5.737	2,059,313.89
202	Ninth Ave. to Rt. 28	Somerset	Reconstruction		0.875	224,410.79
206	Manville & Bridge Street	Somerset	Interchange Revision		.452	139,428.21
206	Andover-Byram Twp.	Sussex	Reconstruction		1.614	360,740.25
206	Paulins Kill Bridge	Sussex	Reconstruction		.076	136,268.13
208	Colonial Rd. to Rt. 202	Bergen	Grading, Paving, Bridges		1.623	1,659,499.48
208	Rt. 4-Erie RR Inc. Marlot Ave.	Bergen	Grading, Paving, Bridges		1.418	864,435.18
287	Rt. 202 to Vreeland Ave.	Morris	Grading, Paving, Bridges		2.055	3,598,772.03
287	River Rd. Interchange	Middlesex	Grading, Paving, Bridges		3.730	4,287,709.50
287	Stelton to New Durham	Middlesex	Grading, Paving, Bridges		3.017	3,932,289.15
287	Durham to Prince Street	Middlesex	Grading, Paving, Bridges		1.687	3,977,236.46
287	Prince to Philo Blvd.	Middlesex	Grading, Paving, Bridges		1.630	3,630,005.99
287	Vreeland to Rt. 202	Morris	Grading, Paving, Bridges		1.552	2,082,674.33
287	Peters Brook-202-206 Inter.	Somerset	Reconstruction		2.753	3,394,804.00
287	Littleton Rd. to US 202	Middlesex	Grading, Paving, Bridge		1.829	1,929,038.92
295	Browning to Broadway	Camden	Grading, Paving, Bridge		2.232	4,298,534.74
295	Copley Rd. to Vi. of Kresson Rd.	Camden	Grading, Paving, Bridge			4,013,089.39
322	Williamstown to Cecil	Gloucester	Reconstruction		5.073	932,056.55
322	Cecil to Penny Pot	Gloucester	Reconstruction		5.638	884,601.32
					<u>104.7833</u>	<u>\$115,597,054.26</u>

## FEDERAL AID SECONDARY PROJECTS



*Parkway Avenue, Trenton—July 1961*

The Federal Aid Highway Act of 1944 provided, among other things, that Secondary Funds "shall be expended on a system of such roads selected by the State Highway Departments in cooperation with the County Supervisors, County Administrators or other appropriate local road officials and the Commissioner of Public Roads."

Under this act a Federal Aid Secondary System consisting of approximately 1900 miles was established in New Jersey. Since then revisions have been made and routes added so that, at present, there are 2168 miles in the Secondary System, including 2037 miles of County Roads, 93 miles of Township Roads and 38 miles of State Highways.

Our present annual allocation of Federal Secondary Funds is approximately \$2,100,000.00. As Federal Funds cannot exceed 50% of the construction cost this makes possible a Federal Aid Secondary construction program of approximately \$4,200,000.00.

There are no Federal regulations regarding the apportionment of Secondary Funds among the 21 Counties. It has been the Department's policy to allocate these funds as evenly as possible. Several of the Counties are either unable or unwilling to match these funds and therefore have not had a Secondary Project for a number of years.

Since 1948, we have constructed or reconstructed about 235 miles of Secondary Roads and a number of Bridges.

Secondary Funds are available for two years after the fiscal year for which they have been appropriated. Up-to-date we have been able to use all of our allotments.

**LIST SHOWING FEDERAL AID SECONDARY PROJECTS AWARDED  
FROM JULY 1, 1954 TO JANUARY 1, 1962**

PROJECT	COUNTY	NAME OF PROJECT	TYPE OF CONSTRUCTION	LENGTH	COST
ER-5	Sussex	Bridge No. 216	Concrete Bridge	0.036	\$ 20,056.85
ER-6	Sussex	Bridge No. 222	Concrete Bridge	0.010	59,342.35
ER-7	Sussex	Bridge No. 476	Corr. Metal Plate Arch Bridge	0.013	24,239.00
S1(2)	Bergen	Old Hook Road	Bit. Concrete Pavement	2.365	434,021.83
DS1(3)	Bergen	Old Hook Road Extension	Bit. Concrete Pavement	0.416	209,293.27
S1(4)	Bergen	Old Hook Road Extension	Bit. Concrete Pavement	0.095	24,014.24
S12(3)	Mercer	Hightstown-Princeton Road	Bit. Concrete Pavement	0.625	92,386.00
S12(4)	Mercer	Hightstown-Princeton Road	Bit. Concrete Pavement	0.986	171,912.75
S43(2)	Hunterdon & Mercer	Hopewell-Woodsville Road	Bit. Concrete Pavement plus Bridges	0.323	177,730.00
S50(4)	Salem	Quinton-Elmer Road	Bit. Concrete Pavement	0.478	99,724.45
S50(5)	Salem	Quinton-Elmer Road	Bit. Concrete Pavement	0.295	66,477.65
S80(3)	Camden	Federal Street	Plain Concrete Pavement	2.074	1,389,717.35
S93(3)	Mercer	Parkway Avenue	Bit. Concrete Pavement	0.550	109,713.00
S93(4)	Mercer	Parkway Avenue	Bit. Concrete Pavement	0.994	268,662.00
S96(2)	Morris	Washington Street	Bit. Concrete Pavement	0.694	28,433.00
S97(7)	Morris	Kiel Avenue	Bit. Concrete Pavement	2.238	734,118.50
S103(2)	Warren	Hope-Bridgeville Road	Bit. Concrete Pavement	2.326	100,225.15
S104(2)	Morris	Ridgedale Avenue	Bit. Concrete Pavement	3.638	343,693.61
S104(3)	Morris	Intersection-Ridgedale Avenue & Columbia Turnpike	Bit. Concrete Pavement	0.218	83,004.45
S104(4)	Morris	Ridgedale Avenue	Bit. Concrete Pavement	1.640	220,722.75
S110(2)	Ocean	Hooper Avenue	2" Mixed-in-place	3.888	102,429.30
S115(2)	Morris	Berkshire Valley Road	Bit. Concrete Pavement	0.814	90,569.92
S116(3)	Somerset	Washington Valley Road	Bit. Concrete Pavement	0.621	82,461.44
S117(4)	Somerset	Finderne Avenue	Bit. Concrete Pavement	0.568	84,000.00
S117(5)	Somerset	North Main Street-Manville	Bit. Concrete Pavement	0.372	75,780.71
S119(7)	Ocean	Whiting-Hornerstown Road	2" Mixed-in-place	9.880	156,087.04
S122(1)	Morris	Morristown-Whippany Road	Bit. Concrete Pavement	1.062	102,932.65
S122(2)	Morris	Morristown-Whippany Road	Bit. Concrete Pavement	1.506	318,885.70
S122(3)	Morris	Morris Street & Morris Avenue	Bit. Concrete Pavement	1.123	48,370.00
S124(2)	Hudson	Palisade Avenue Bridge	Prestressed Concrete Bridge	0.050	241,184.00
S130(3)	Mercer	South Olden Avenue Extension	Bit. Concrete Pavement	0.379	106,514.00
DS130(4)	Mercer	South Olden Avenue Extension	Bit. Concrete Pavement	0.261	50,712.50
DS130(5)	Mercer	South Olden Avenue Extension	Bit. Concrete Pavement	0.480	145,574.75
S130(6)	Mercer	Arena Drive	Bit. Concrete Pavement	0.284	91,013.50
S132(3)	Camden	Haddon Avenue	9" Plain Concrete Pavement	1.132	350,906.20
S132(4)	Camden	Haddon Avenue	9" Plain Concrete Pavement	1.031	360,412.15
S136(2)	Morris	Valley Road	Bit. Concrete Pavement	1.042	99,997.60
S136(3)	Union	Bridge over Salt Creek	Prestressed Concrete Bridge	0.029	59,355.00
S142(3)	Union	Raritan Road	Bit. Concrete Pavement	1.103	158,155.25
S142(2)	Union	Terrill Road	Bit. Concrete Pavement	1.830	179,734.74
S142(4)	Union	Raritan Road	Bit. Concrete Pavement	0.473	73,092.82
S170(6)	Mercer	Whitehorse-Mercerville Road	Bit. Concrete Pavement	0.508	82,521.00
S170(7)	Mercer	Mercerville Lawrence Station Road	Bit. Concrete Pavement	0.654	89,480.50
S176(2)	Salem & Cumberland	Cumberland Causeway Bridge	Rein. Concrete Bridge	0.510	103,799.81
S176(3)	Cumberland	Bridgeton-Jericho Road	Bit. Concrete Pavement	1.847	87,955.51
S176(4)	Cumberland	Bridgeton-Jericho Road	Bit. Concrete Pavement	1.701	81,616.17
S176(5)	Salem	Canton Drain Bridge & Appr.	Rein. Concrete Bridge	0.462	67,878.08
S176(6)	Cumberland	Bridgeton-Jericho Road	Bit. Concrete Pavement	1.557	66,248.63
S178(2)	Ocean	Meadow Avenue & Bridge	Prestressed Concrete Bridge & Mixed-in-place pavement	0.390	99,763.14
S179(1)	Salem	Intersection at Slapes Corner	Gravel-Bit. Surface Treatment	0.284	47,813.16
S179(2)	Salem	Deenwater-Slapes Corner Road	Bit. Concrete Pavement	3.446	196,947.30
S179(4)	Salem	Pointers-Auburn Road	Bit. Concrete Pavement	1.466	120,444.75
S180(6)	Ocean	Burnt Tavern Road	2" Mixed-in-place	0.984	108,338.00
S185(2)	Somerset	Franklin Boulevard	Bit. Concrete Pavement	0.578	91,707.95
S185(4)	Somerset	Franklin Boulevard	Bit. Concrete Pavement	0.739	157,147.30
S186(1)	Morris	Morris Plains-Parsippany Road	Bit. Concrete Pavement	3.958	178,210.95
S186(2)	Morris & Passaic	Bridge over Pompton River	I Beam Bridge	0.243	575,578.92
S186(3)	Morris	Boonton Turnpike	Bit. Concrete Pavement	0.850	216,042.70

**LIST SHOWING FEDERAL AID SECONDARY PROJECTS AWARDED  
FROM JULY 1, 1954 TO JANUARY 1, 1962 (Continued)**

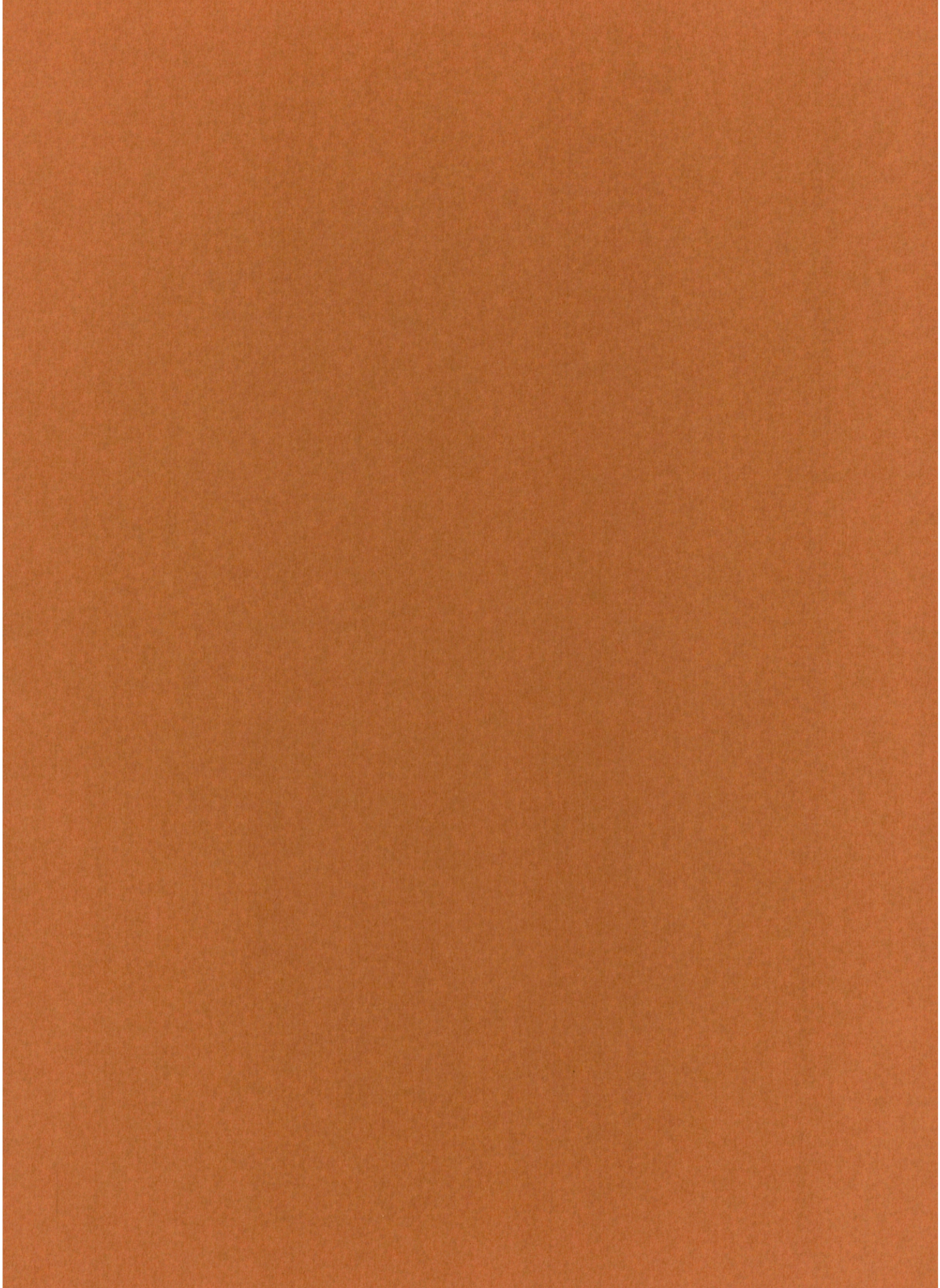
PROJECT	COUNTY	NAME OF PROJECT	TYPE OF CONSTRUCTION	LENGTH	COST
S187(2)	Morris	Intersection Columbia Turnpike—Park Avenue	Bit. Concrete Pavement	0.104	\$ 58,964.65
S187(4)	Morris	Columbia Turnpike	Bit. Concrete Pavement	2.311	346,408.70
S188(1)	Cape May	Bayshore Road	Bit. Concrete Pavement	1.622	99,715.34
S191(1)	Cumberland	Dividing Creek Bridge	I Beam Bridge	0.166	95,712.61
S191(2)	Cumberland	Bridgeton-Port Norris Road	Bit. Concrete Pavement	2.481	39,016.21
S191(3)	Cumberland	Bridgeton-Port Norris Road	Bit. Concrete Pavement	1.373	22,825.50
S191(4)	Cumberland	Bridgeton-Port Norris Road	Bit. Concrete Pavement	2.553	67,962.73
S191(5)	Cumberland	Bridgeton-Port Norris Road	Bit. Concrete Pavement	2.297	68,606.44
S191(6)	Cumberland	Bridgeton-Port Norris Road	Bit. Concrete Pavement	0.175	47,135.90
S192(1)	Middlesex	New Durham Road	Bit. Concrete Pavement	1.757	130,832.68
S192(2)	Middlesex	New Durham Road	Bit. Concrete Pavement	1.553	143,485.49
S192(3)	Middlesex	Middlesex Avenue	Bit. Concrete Pavement	0.235	46,952.65
S194(1)	Mercer	Whitehead Road Extension	Bit. Concrete Pavement	0.341	89,076.50
S195(1)	Atlantic	Wheat Road	Bit. Concrete Pavement	3.087	128,195.78
S195(2)	Cumberland	Wheat Road	Bit. Concrete Pavement	0.435	20,003.45
S196(1)	Hunterdon	Flemington-Voorhees Corner Road	Bit. Concrete Pavement	1.409	111,102.40
S197(1)	Union	Raritan Road	Bit. Concrete Pavement	0.757	52,867.85
S197(2)	Union	Raritan Road	Bit. Concrete Pavement	0.278	26,569.51
S198(1)	Cumberland	Seeley Bridge & Appr.	Rein. Concrete Bridge	0.237	88,535.20
S198(2)	Cumberland	Seeley-Lebanon Road	Storm Sewer	0.662	33,656.15
S199(2)	Cumberland	Vine Street Bridge & Appr.	Prestressed Bridge	0.327	216,136.69
S200(1)	Bergen	Bridge over Hackensack River and Approaches	I Beam Bridge	0.511	518,271.20
S200(2)	Bergen	River Street	Bit. Concrete Pavement	1.203	463,095.20
S202(1)	Atlantic	Dorset Boulevard	Bit. Concrete Pavement	0.919	117,567.90
S202(4)	Atlantic	Risley Channel Bridge & Appr.	Prestressed Concrete Bridge	0.468	1,504,317.75
S203(1)	Passaic	Echo Lake Road	Bit. Concrete Pavement	2.264	377,593.14
S204(1)	Cumberland	Bridgeton-Millville Road	Bit. Concrete Pavement	0.397	11,332.94
S204(2)	Cumberland	Bridgeton-Millville Road	Bit. Concrete Pavement	0.578	22,924.30
S204(3)	Cumberland	Bridgeton-Millville Road	Bit. Concrete Pavement	0.720	43,380.26
S205(1)	Warren	Brass Castle Road	Bit. Concrete Pavement	2.178	109,575.73
S207(1)	Monmouth	Asbury Avenue	Bit. Concrete Pavement	1.158	286,930.96
S208(2)	Burlington	South Pemberton Road	Bit. Concrete Pavement	2.814	334,688.55
S209(1)	Bergen	Schraalenburgh Road	Bit. Concrete Pavement	1.184	193,723.67
S210(1)	Bergen	Forest Avenue	Bit. Concrete Pavement	3.988	867,805.34
S210(3)	Bergen	Forest Avenue Bridge & Appr.	Rein. Concrete Bridge	0.030	129,854.95
S212(1)	Cumberland	Main Road	Storm Sewer	1.045	85,829.52
S212(2)	Cumberland	Main Road	Bit. Concrete Pavement	1.189	65,631.72
S212(3)	Cumberland	Main Road	Bit. Concrete Pavement	1.572	74,995.17
S213(1)	Union	Meisel Avenue	Bit. Concrete Pavement	1.382	133,204.36
S215(2)	Cape May	Roosevelt Blvd. Bridge & Appr.	Prestressed Conc. Bridge	0.587	1,243,512.44
S216(1)	Salem	Hook Road	Bit. Concrete Pavement	0.791	97,858.76
S218(2)	Burlington	Mt. Holly-Burlington Road	Bit. Concrete Pavement	4.970	537,999.25
S219(1)	Camden & Burlington	Bridge over Pennsauken Creek & Appr.	Concrete Bridge	0.200	65,703.60
S220(1)	Somerset	Franklin Turnpike	Bit. Concrete Pavement	0.473	49,260.10
DS221(4)	Somerset	Watchung Rotary Intersection	Bit. Concrete Pavement	0.360	128,832.10
S226(1)	Passaic	Madison Avenue Extension	Bit. Concrete Pavement	0.085	29,272.25
S226(2)	Passaic	Madison Avenue Extension	Bit. Concrete Pavement	1.504	137,944.25
S227(1)	Middlesex	Main Street	Bit. Concrete Pavement	0.319	44,435.15
S228(1)	Warren	Phillipsburg-Belvidere Road	Bit. Concrete Pavement	2.993	239,658.37
S228(2)	Warren	Phillipsburg-Belvidere Road	Bit. Concrete Pavement	2.424	237,793.14
S228(3)	Warren	Phillipsburg-Belvidere Road	Bit. Concrete Pavement	4.545	208,060.70
S228(4)	Warren	Phillipsburg-Belvidere Road	Bit. Concrete Pavement	0.961	67,373.50
S230(1)	Bergen	Grand Avenue	Bit. Concrete Pavement	0.845	166,812.53
S231(1)	Cumberland	Centerton Road	Storm Sewer	0.179	6,147.00
DS232(2)	Somerset	Hamilton Street	Bit. Concrete Pavement	1.379	101,458.10
DS233(1)	Camden	Church Street	9" Plain Concrete Pavement	0.541	126,469.20
S233(2)	Camden	Clementon-Blackwood Road	Bit. Concrete Pavement	1.616	186,330.79
S233(3)	Camden	Clementon-Blackwood Road	Bit. Concrete Pavement	1.623	177,383.37

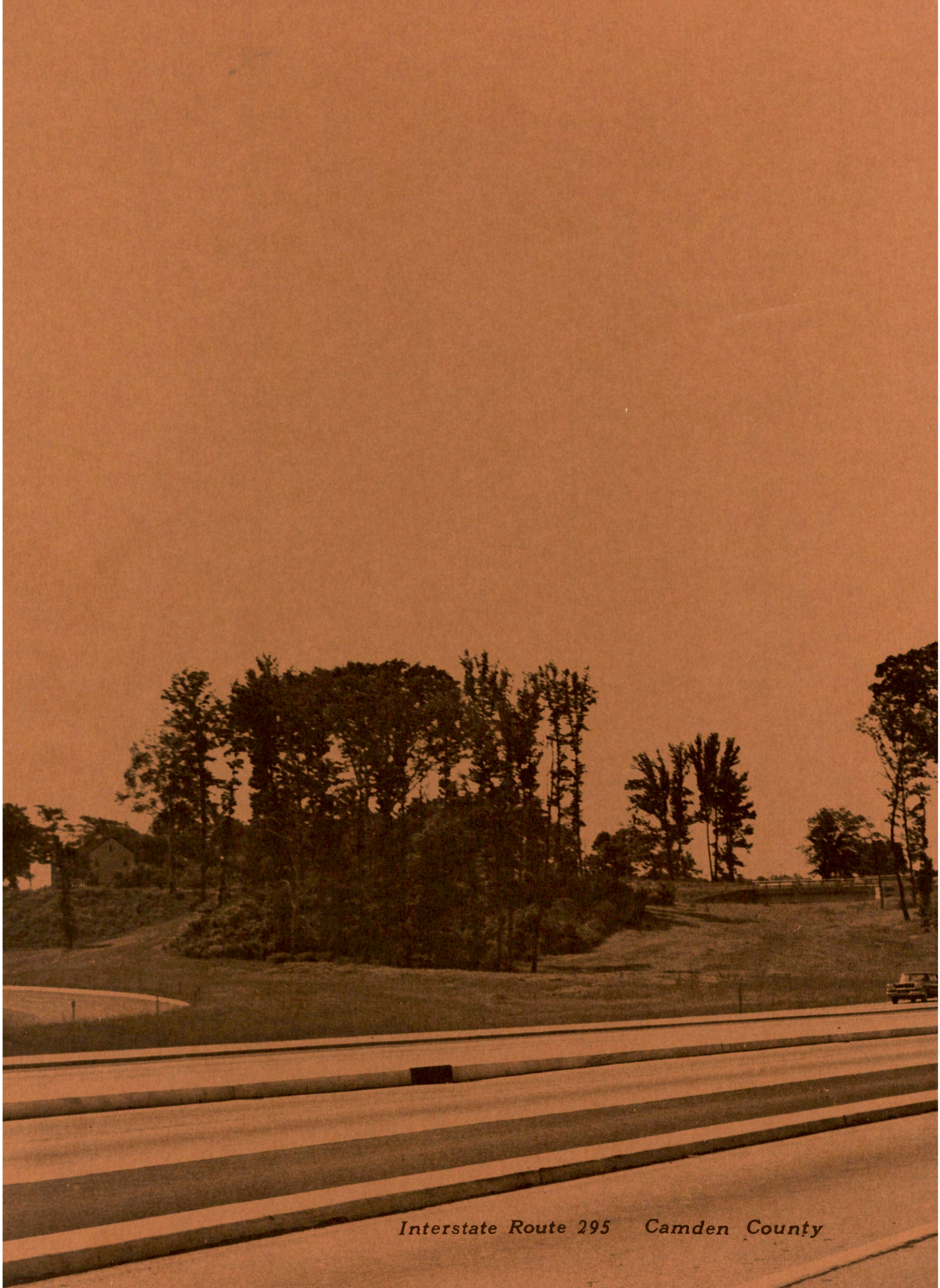
**LIST SHOWING FEDERAL AID SECONDARY PROJECTS AWARDED  
FROM JULY 1, 1954 TO JANUARY 1, 1962 (Continued)**

PROJECT	COUNTY	NAME OF PROJECT	TYPE OF CONSTRUCTION	LENGTH	COST
S235 (1)	Monmouth	Goose Neck Bridge & Appr.	Steel I Beam Bridge	0.497	\$ 1,433,279.25
DS234 (1)	Middlesex & Somerset	Bridge over Green Brook & Appr.	Prestressed Concrete Bridge	0:082	150,292.55
S236 (1)	Bergen	Moonachie Avenue	Bit. Concrete Pavement	1.602	370,483.13
S238 (1)	Essex	Canoe Brook Road	Bit. Concrete Pavement	1.596	394,819.90
S238 (2)	Essex	Canoe Brook Road	Bit. Concrete Pavement	1.903	530,183.00
S239 (1)	Ocean	Lacey Road	2" Mixed-in-place	1.989	74,424.90
S240 (1)	Hudson	Route No. 169, Section 1, plus Bridges	Bit. Concrete Pavement	2.022	1,566,519.34
S242 (1)	Cumberland	Landis Avenue	Bit. Concrete Pavement	2.567	91,085.15
S242 (3)	Cumberland	East Landis Avenue	Bit. Concrete Pavement	2.009	78,409.58
S242 (4)	Cumberland	Landis Avenue	Drainage only	0.587	50,715.98
S243 (1)	Salem	Fort Mott Road	Bit. Concrete Pavement	1.508	139,723.60
S245 (1)	Passaic	Lincoln Street Bridge	Substructure	0.067	318,738.75
				<u>158.703</u>	<u>\$26,332,616.16</u>









*Interstate Route 295 Camden County*