

# July 2024 Traffic Report

AVIATION DEPARTMENT (Data As Of 8/28/2024 1:12:19 PM)

# REGION



## Revenue Passengers

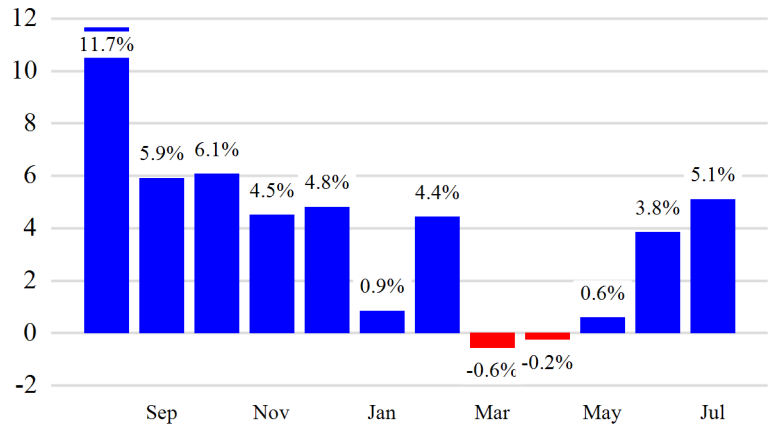
	Curr Month	% Change
	13,779,197	5.1% ▲
Domestic	8,457,392	4.1%
International	5,321,805	6.8%
Non-Revenue	319,043	4.2%

Load Factors	Curr Month
Domestic	85.5%
International	86.5%

85.9% Avg Load Factor

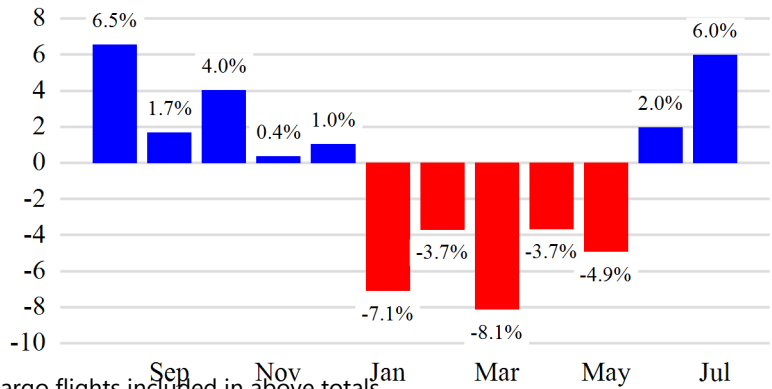
Year over Year % Change in Revenue Passengers - 12 Months



## Total Flights

	Curr Month	% Change
	110,606	4.4% ▲
<b>Excl GA</b>	105,697	6.0% ▲
Domestic	74,914	5.3%
International	30,783	7.7%
Gen Aviation	4,909	-20.7%
Cargo Flights*	3,023	-3.8%

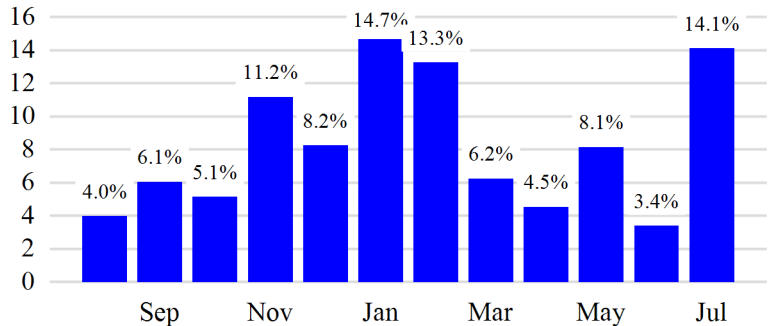
Year over Year % Change in Total Flights (Excl GA) - 12 Months



## Cargo (Short Tons)

	Curr Month	% Change
	215,498	14.1% ▲
Domestic	95,476	22.7%
International	120,022	8.1%
Mail	6,924	-7.8%

Year over Year % Change in Cargo - 12 Months



### Top 5 Declines in Revenue Passengers by Airline

Airline	Pax Decline	% Decline
ALASKA AIRLINES	(23,226)	-10.0%
AER LINGUS	(10,877)	-16.0%
KUWAIT	(10,833)	-61.0%
ITA AIRWAYS	(9,571)	-16.0%
WESTJET	(7,486)	-47.0%

### Top 5 Increases in Revenue Passengers by Airline

Airline	Pax Increase	% Increase
DELTA	159,817	5.0%
SPIRIT AIRLINES	132,186	34.0%
UNITED	83,022	3.0%
FRONTIER AIRLINES	77,378	224.0%
JETBLUE AIRWAYS	40,481	2.0%

## Airport Summary Statistics

### JFK Summary

	Current Month	YoY %
Total Revenue Pax	6,212,709	5.0
Total Flights Including GA	43,033	4.0
Total Cargo (Short Tons)	153,534	15.9

### EWR Summary

	Current Month	YoY %
Total Revenue Pax	4,500,479	2.0
Total Flights Including GA	35,915	4.0
Total Cargo (Short Tons)	59,363	9.7

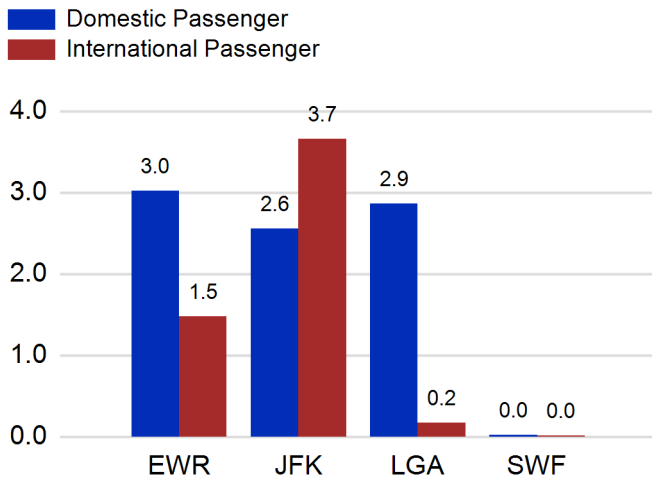
### LGA Summary

	Current Month	YoY %
Total Revenue Pax	3,037,099	9.0
Total Flights Including GA	30,191	9.0
Total Cargo (Short Tons)	433	-8.2

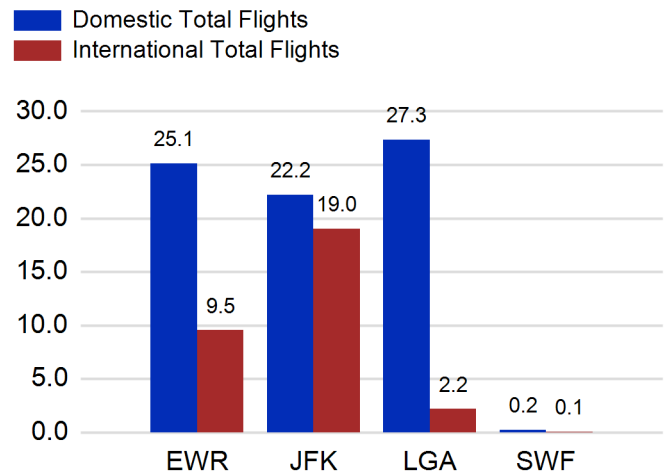
### SWF Summary

	Current Month	YoY %
Total Revenue Pax	28,910	7.0
Total Flights Including GA	1,467	-47.0
Total Cargo (Short Tons)	2,168	19.3

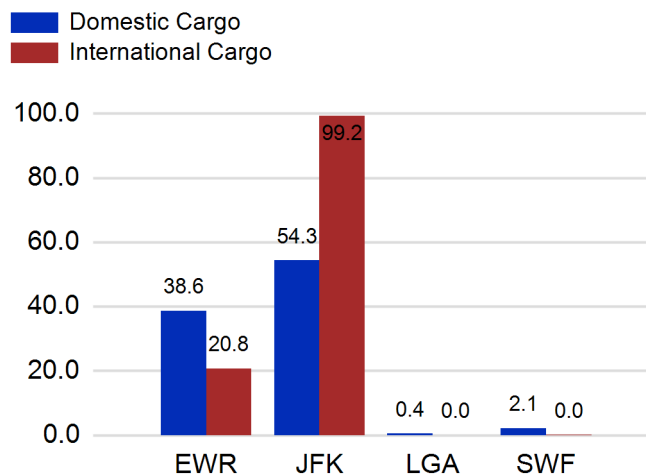
### Total Passengers by Airport (Millions)



### Total Flights by Airport (Thousands)



### Total Cargo by Airport (Thousands of Short Tons)



## 12 Months Ending Passenger & Freight Statistics

### Top 20 Airlines Ranking by Passengers & Freight: 12 Months Ending Jul 2024

Airline Name	Domestic	International	Total Pax	% of Tot	Airline Name	Short Tons	% of Tot
UNITED	26,863,597	8,718,710	35,582,307	24.40%	FEDERAL EXPRESS	383,475	15.80%
DELTA	28,157,185	6,461,701	34,618,886	23.74%	UNITED PARCEL	199,542	8.22%
JETBLUE AIRWAYS	13,475,279	7,090,522	20,565,801	14.10%	UNITED	183,351	7.55%
AMERICAN	13,609,993	3,435,531	17,045,524	11.69%	DELTA	122,474	5.05%
SPIRIT AIRLINES	5,628,848	0	5,628,848	3.86%	KALITTA AIR LLC	115,298	4.75%
SOUTHWEST AIRLINES	3,264,965	0	3,264,965	2.24%	ATLAS AIR	90,719	3.74%
ALASKA AIRLINES	2,212,141	0	2,212,141	1.52%	AMERICAN	80,652	3.32%
AIR CANADA	0	1,827,208	1,827,208	1.25%	AIR TRANSPORT INT'L.(BAX Inc.)	70,492	2.90%
BRITISH AIRWAYS	0	1,735,046	1,735,046	1.19%	BRITISH AIRWAYS	57,546	2.37%
AIR FRANCE	0	1,186,394	1,186,394	0.81%	CATHAY PACIFIC	53,420	2.20%
AVIANCA	0	1,103,725	1,103,725	0.76%	LUFTHANSA	51,462	2.12%
VIRGIN ATLANTIC	0	1,079,276	1,079,276	0.74%	KOREAN	50,797	2.09%
EMIRATES AIRLINES	0	1,059,389	1,059,389	0.73%	CARGOLUX AIRLINES	49,179	2.03%
LUFTHANSA	0	964,557	964,557	0.66%	VIRGIN ATLANTIC	44,358	1.83%
TURKISH AIRLINES	0	791,773	791,773	0.54%	CHINA AIRLINES	42,913	1.77%
EL AL	254	748,347	748,601	0.51%	ABX AIR INC	38,831	1.60%
AER LINGUS	0	745,854	745,854	0.51%	TURKISH AIRLINES	37,558	1.55%
FRONTIER AIRLINES	677,033	0	677,033	0.46%	AIR CHINA	36,634	1.51%
QATAR AIRWAYS	0	609,438	609,438	0.42%	CHINA CARGO AIRLINES	35,191	1.45%
AIR INDIA	0	583,483	583,483	0.40%	CHINA SOUTHERN	31,488	1.30%

### Passengers & Freight by Market - 12 Months Ending

Market	Passengers	Freight (Short Tons)
TRANSATLANTIC	27,238,792	878,982
CANADA	4,312,334	4,638
CARIBBEAN + BERMUDA	9,111,563	10,679
CENTRAL AND SOUTH AMERICA	4,876,788	62,664
DOMESTIC	92,045,463	1,028,794
MEXICO	2,537,816	13,300
TRANSPACIFIC	3,206,921	419,863
PUERTO RICO	2,500,723	8,513

## Additional Data

### Airline Schedules (ADI): Non-Stop Destinations

	Region	Flights (Daily)	Cities
Domestic	Domestic	2382.9	108
	Puerto Rico	45.3	3
	<b>Total</b>	<b>2,428.2</b>	<b>111.00</b>
International	Canada	191.2	8
	Caribbean & Bermuda	184.9	23
	Central & South America	88.9	19
	Mexico	48.7	6
	Transatlantic	429.3	66
	Transpacific	42.1	12
	<b>Total</b>	<b>985.1</b>	<b>134.00</b>
<b>Total</b>	<b>3,413.3</b>	<b>245.00</b>	

### Airline Schedules (ADI): Carriers & Aircraft Type

	Aircraft Type	Flights (Daily)	Carriers
Domestic	Commuter	905.7	4
	Narrow Body	1480.5	11
	Wide Body	41.9	4
	<b>Total</b>	<b>2,428.2</b>	<b>19.00</b>
International	Commuter	165.3	5
	Narrow Body	392.0	22
	Wide Body	427.8	63
	<b>Total</b>	<b>985.1</b>	<b>90.00</b>
<b>Total</b>	<b>Total</b>	<b>3,413.3</b>	<b>109.00</b>

### Passenger Demographics (ACI ASQ Surveys - 2023)

Transport Mode	Trip Type	Gender
Bus/Shuttle	Business	M
Other	Leisure	F
Private car dropped off by someone	<b>Annual Flights</b>	<b>Residency</b>
Private/Company Car	1-2	United States
Rail/Subway	3-5	Other
Rental Car	6-10	<b>Connect</b>
Ridesharing (e.g. Uber)	11-20	Local Origin/Destination
Taxi/Limo	21+	Connecting

### Ground Transportation

	Curr Month	% Change		Curr Month	% Change
<i>Paid Parked Cars</i>	419,980	1.3	<i>Total Air Train Passengers</i>	2,992,644	5.6
<i>GTC Bookings</i>	0		<i>Paid Howard Beach Passengers</i>	174,838	25.8
<i>Airport Coach Passengers</i>	38,436	21.5	<i>Paid Jamaica Passengers</i>	700,464	44.4
<i>Taxis Dispatched</i>	330,494	-5.4	<i>Paid EWR Passengers</i>	231,122	0.6
			<i>On-Airport (Unpaid) Passengers</i>	1,886,220	-4.8

### Airlines for American Carriers (USA)

	Curr Month	% Change
<i>Freight:revenue ton miles (000)</i>	0	

### Regional Airports: Other

	Curr Month	% Change
<i>TEB flight movements</i>	12,338	-3.6
<i>ISP Total passengers</i>	127,946	0.0
<i>HPN Total passengers</i>	206,408	10.1