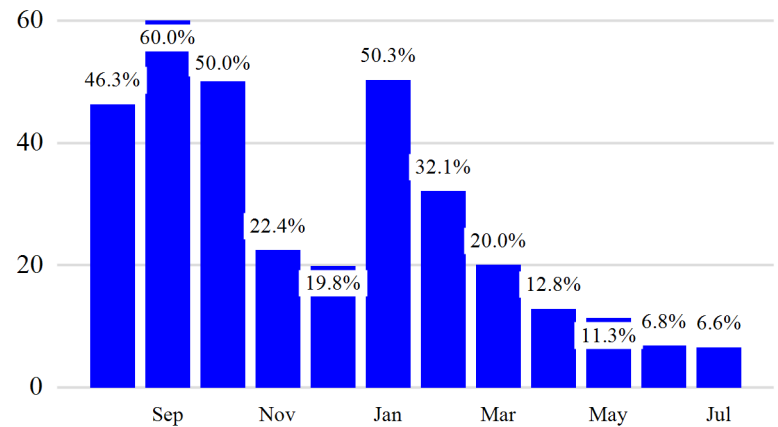


Revenue Passengers

	<u>Curr Month</u>	<u>% Change</u>
	13,109,664	6.6% ▲
Domestic	8,125,659	2.0%
International	4,984,005	14.9%
Non-Revenue	306,176	-8.1%
Load Factors	<u>Curr Month</u>	
Domestic	83.9%	 84.7% Avg Load Factor
International	86.0%	

Year over Year % Change in Revenue Passengers - 12 Months

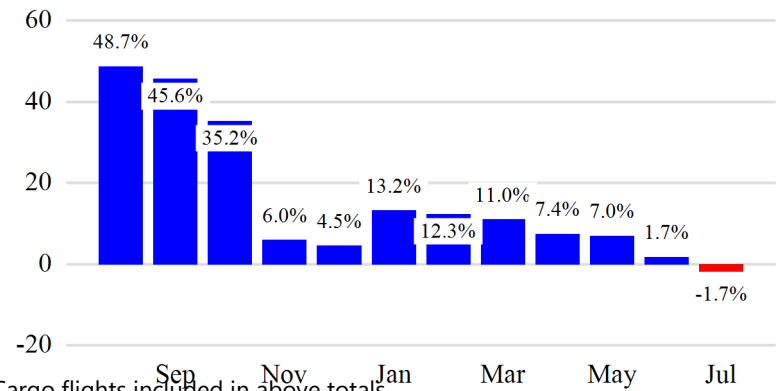


*Incorrect SWF international load factors are slightly boosting international Regional load factors and will be reposted once reconciled

Total Flights

	<u>Curr Month</u>	<u>% Change</u>
	105,926	-1.9% ▼
Excl GA	99,739	-1.7% ▼
Domestic	71,160	-7.4%
International	28,579	16.2%
Gen Aviation	6,187	-5.1%
Cargo Flights*	3,141	-6.9%

Year over Year % Change in Total Flights (Excl GA) - 12 Months

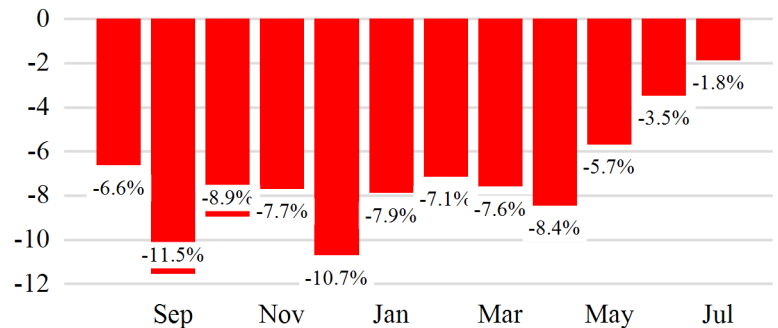


* Cargo flights included in above totals

Cargo (Short Tons)

	<u>Curr Month</u>	<u>% Change</u>
	186,289	-1.8% ▼
Domestic	77,080	-2.3%
International	109,209	-1.5%
Mail	6,979	-40.7%

Year over Year % Change in Cargo - 12 Months



Top 5 Declines in Revenue Passengers by Airline

Airline	Pax Decline	% Decline
AMERICAN	(129,486)	-8.0%
JETBLUE AIRWAYS	(78,950)	-4.0%
FINNAIR	(16,311)	-51.0%
FRONTIER AIRLINES	(12,306)	-26.0%
SINGAPORE AIRLINES	(8,981)	-22.0%

Top 5 Increases in Revenue Passengers by Airline

Airline	Pax Increase	% Increase
DELTA	304,573	11.0%
UNITED	254,624	9.0%
Air Canada	58,108	52.0%
SAS	36,711	164.0%
NORSE ATLANTIC	34,964	212.0%

Airport Summary Statistics

JFK Summary

	Current Month	YoY %
Total Revenue Pax	5,908,958	6.0
Total Flights Including GA	41,222	1.0
Total Cargo (Short Tons)	129,611	-0.2

EWR Summary

	Current Month	YoY %
Total Revenue Pax	4,389,804	8.0
Total Flights Including GA	34,386	0.0
Total Cargo (Short Tons)	54,389	-5.3

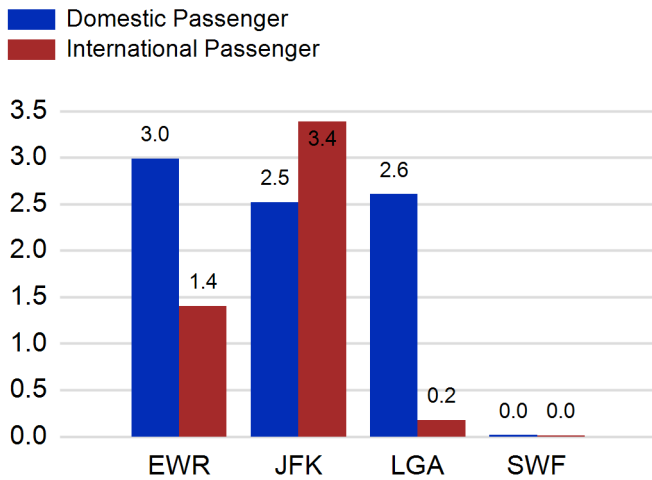
LGA Summary

	Current Month	YoY %
Total Revenue Pax	2,784,083	3.0
Total Flights Including GA	27,514	-7.0
Total Cargo (Short Tons)	471	-8.6

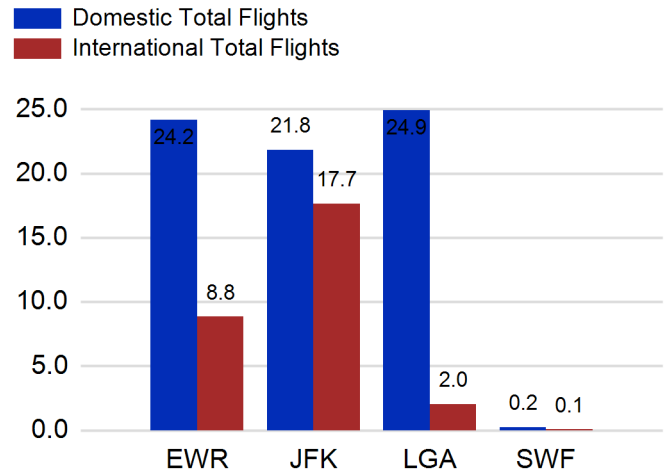
SWF Summary

	Current Month	YoY %
Total Revenue Pax	26,819	-33.0
Total Flights Including GA	2,804	-8.0
Total Cargo (Short Tons)	1,817	-7.8

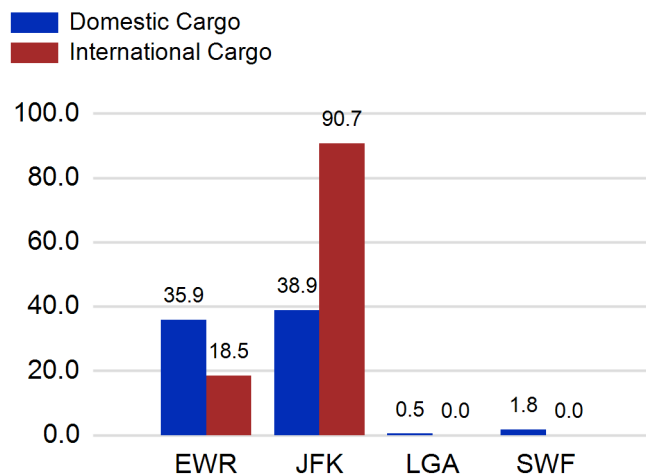
Total Passengers by Airport (Millions)



Total Flights by Airport (Thousands)



Total Cargo by Airport (Thousands of Short Tons)



12 Months Ending Passenger & Freight Statistics

Top 20 Airlines Ranking by Passengers & Freight: 12 Months Ending Jul 2023

Airline Name	Domestic	International	Total Pax	% of Tot	Airline Name	Short Tons	% of Tot
UNITED	26,672,012	7,750,489	34,422,501	24.53%	FEDERAL EXPRESS	374,962	16.76%
DELTA	25,994,315	5,965,482	31,959,797	22.77%	UNITED PARCEL	196,531	8.78%
JETBLUE AIRWAYS	16,248,133	6,392,614	22,640,747	16.13%	UNITED	181,295	8.10%
AMERICAN	14,150,138	3,635,388	17,785,526	12.67%	DELTA	96,189	4.30%
SPIRIT AIRLINES	4,445,428	0	4,445,428	3.17%	AMERICAN	87,264	3.90%
SOUTHWEST AIRLINES	3,102,976	0	3,102,976	2.21%	KALITTA AIR LLC	86,605	3.87%
ALASKA AIRLINES	2,424,498	0	2,424,498	1.73%	AIR TRANSPORT INT'L.(BAX Inc.)	68,502	3.06%
AIR CANADA	0	1,610,437	1,610,437	1.15%	ATLAS AIR	64,836	2.90%
BRITISH AIRWAYS	0	1,528,452	1,528,452	1.09%	ABX AIR INC	58,433	2.61%
AIR FRANCE	313	1,195,518	1,195,831	0.85%	KOREAN	50,832	2.27%
EMIRATES AIRLINES	0	1,070,707	1,070,707	0.76%	CARGOLUX AIRLINES	49,342	2.21%
VIRGIN ATLANTIC	0	944,255	944,255	0.67%	BRITISH AIRWAYS	48,610	2.17%
LUFTHANSA	0	823,468	823,468	0.59%	CHINA AIRLINES (CAL)	45,906	2.05%
Avianca Costa Rica	0	767,739	767,739	0.55%	CATHAY PACIFIC	45,730	2.04%
AER LINGUS	0	734,918	734,918	0.52%	VIRGIN ATLANTIC	35,897	1.60%
TURKISH AIR	0	729,012	729,012	0.52%	LUFTHANSA CARGO	32,892	1.47%
EL AL	0	576,570	576,570	0.41%	EVA	30,999	1.39%
LAN AIRLINES	0	535,067	535,067	0.38%	AIR FRANCE	30,558	1.37%
IBERIA	0	523,162	523,162	0.37%	TURKISH AIR	30,328	1.36%
SAS	0	520,751	520,751	0.37%	ASIANA	28,089	1.26%

Passengers & Freight by Market - 12 Months Ending

Market	Passengers	Freight (Short Tons)
TRANSATLANTIC	25,333,196	842,658
CANADA	3,896,361	6,924
CARIBBEAN + BERMUDA	8,139,551	11,987
CENTRAL AND SOUTH AMERICA	4,116,335	61,133
DOMESTIC	91,681,392	945,116
MEXICO	2,430,367	13,054
TRANSPACIFIC	2,303,131	348,525
PUERTO RICO	2,437,578	8,146

Additional Data

Airline Schedules (ADI): Non-Stop Destinations

	Region	Flights (Daily)	Cities
Domestic	Domestic	2378.2	112
	Puerto Rico	40.8	3
	Total	2,419.0	115.00
International	Canada	187.3	8
	Caribbean & Bermuda	177.6	23
	Central & South America	81.4	18
	Mexico	44.7	6
	Transatlantic	406.5	66
	Transpacific	34.9	11
	Total	932.4	132.00
Total	3,351.4	247.00	

Airline Schedules (ADI): Carriers & Aircraft Type

	Aircraft Type	Flights (Daily)	Carriers
Domestic	Commuter	877.9	4
	Narrow Body	1481.0	10
	Wide Body	60.1	4
	Total	2,419.0	18.00
International	Commuter	159.6	5
	Narrow Body	363.1	22
	Wide Body	409.7	58
	Total	932.4	85.00
Total	Total	3,351.4	103.00

Passenger Demographics (ACI ASQ Surveys - 2021)

Connect		Trip Type		Gender	
Local Origin/Destination	78.6%	Business	14.0%	M	49.6%
Connecting	21.4%	Leisure	86.0%	F	50.4%
Transport Mode		Annual Flights		Residency	
Bus/Shuttle	4.7%	1-2	61.5%	United States	81.0%
Other	18.7%	3-5	24.9%	Other	19.0%
Private/Company Car	37.5%	6-10	9.0%		
Rail/Subway	7.3%	11-20	2.8%		
Rental Car	4.6%	21+	1.8%		
Taxi/Limo	27.2%				

Ground Transportation

	Curr Month	% Change		Curr Month	% Change
<i>Paid Parked Cars</i>	414,453	-10.6	<i>Total Air Train Passengers</i>	2,834,721	9.9
<i>GTC Bookings</i>	0		<i>Paid Howard Beach Passengers</i>	138,941	3.4
<i>Airport Coach Passengers</i>	31,641	-2.5	<i>Paid Jamaica Passengers</i>	485,230	7.4
<i>Taxis Dispatched</i>	349,439	-2.1	<i>Paid EWR Passengers</i>	229,776	24.3
			<i>On-Airport (Unpaid) Passengers</i>	1,980,774	9.5

Airlines for American Carriers (USA)

	Curr Month	% Change
<i>Freight:revenue ton miles (000)</i>	0	

Regional Airports: Other

	Curr Month	% Change
<i>TEB flight movements</i>	12,805	22.9
<i>ISP Total passengers</i>	0	-100.0
<i>HPN Total passengers</i>	187,414	19.0