

June 2009



New Jersey



ECONOMIC INDICATORS

Jon S. Corzine
Governor

NEW JERSEY DEPARTMENT OF
LWD
LABOR AND WORKFORCE DEVELOPMENT
nj.gov/labor

David J. Socolow
Commissioner

NEW JERSEY ECONOMIC INDICATORS

No. 514 Based on data through June 30, 2009

This Month's Feature Article

2008 State and 2007 Metropolitan Area and County Per Capita Personal Income 1

The Economy

New Jersey's Economy by the Numbers 11
The Economic Situation 12
Comparison of Economic Trends in New Jersey and the US 16

Labor Area Focus

Regional Analysts' Corner 19
Nonfarm Payroll Employment in New Jersey Labor Areas 20
Civilian Labor Force Data for New Jersey Labor Areas 21

Statistical Section

Indicator Series, 1 to 27, Historical Tables and Charts S-2 — S-19
Indicator Series, 1 to 27, Annual Averages S-20
Nonfarm Payroll Employment in New Jersey (seasonally adjusted) S-21
Nonfarm Payroll Employment in New Jersey (not seasonally adjusted) S-22
Hours and Earnings of Production/Nonsupervisory Workers S-26
Comparative US and NJ Civilian Labor Force Trends S-27
Characteristics of New Jersey's Insured Unemployed S-28
Sources and Notes S-29

New Jersey Economic Indicators (ISSN 1064-5942) is published monthly except February (due to annual revisions). The report is prepared with the cooperation of other state and federal agencies by the New Jersey Department of Labor and Workforce Development, Division of Labor Market and Demographic Research. For information, please contact JoAnne Caramelo at the New Jersey Department of Labor and Workforce Development, PO Box 057, Trenton, NJ 08625-0057, phone: (609) 292-2582 or e-mail: joanne.caramelo@dol.state.nj.us.

RESTRICTIONS: All material may be reprinted without permission; however, it would be appreciated if appropriate credit were given.

ON THE INTERNET: Current and recent back issues are available via the *Labor Planning and Analysis* Web site (**lwd.dol.state.nj.us/labor/lpa**)

June Feature Article

2008 State and 2007 Metropolitan and County Per Capita Personal Income

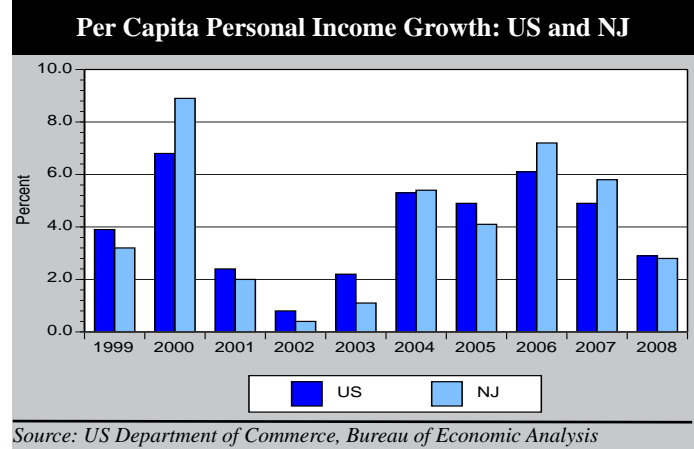
by Walter Nyakanga, Division of Labor Market and Demographic Research

The US Bureau of Economic Analysis (BEA) recently released 2008 preliminary estimates of state total and per capita personal income as well as 2007 estimates of county personal income. In addition, estimates were revised for the years 2005-2007 for states, and 2005-2006 for the counties.

State Per Capita Personal Income

U.S. per capita personal income (personal income divided by population) increased by 2.9 percent in 2008, down from 4.9 percent growth in 2007. Most states shared in the slowdown, according to preliminary estimates released March 2009 by the U.S. Bureau of Economic Analysis (BEA). The national growth rate was the slowest since 2003 when per capita personal income increased by 2.2 percent. Across the states, per capita personal income growth rates ranged from 0.4 percent in Arizona to 9.0 percent in North Dakota.

Figure 1



Despite the slow growth rates, most states outperformed the nation, with nearly two-thirds of the states equal to or exceeding the national growth rate (2.9%). The rate of growth for New Jersey's per capita income declined from 5.8 percent in 2007 to 2.8 percent in 2008.

The range of state growth rates was wide. States with high growth rates included Alaska (8.2%), Wyoming (5.7%), and Oklahoma (5.4%). These oil-producing states benefited from the rise in oil prices which peaked in the first half of 2008. Annual employment levels in 2008 in these states exceeded their 2007 levels. Georgia (1.4%), Nevada (1.3%), Idaho (1.0%) and Arizona (0.4%) were among the states with the lowest growth rates.

New Jersey ranked third in the nation with a per capita personal income of \$50,919, behind the District of Columbia (\$64,991) and Connecticut (\$56,248). Massachusetts ranked fourth with a per capita personal income of \$50,735. New Jersey's per capita personal income was \$11,168 (28.0%) higher than the national figure (\$39,751), and \$4,284 (9.2%) greater than the figure for the Mideast region (\$46,635). The Mideast Region had a 3.5 percent increase from 2007, the third highest among the nation's eight BEA regions. Only the Plains (4.2%) and Southwest (3.6%) regions had higher growth rates.

New Jersey had the second-highest per capita personal income among all states and districts in the Mideast region. The Mideast region includes the neighboring states of Pennsylvania (\$40,265), New York (\$48,076), Delaware (\$40,852) and Maryland (\$48,091), as well as the District of Columbia (\$64,991).

Table J

Per Capita Personal Income by State and Region: 2007 and 2008

(Dollars)	Per Capita Personal Income		Rank in the US		Percent of the US Average		Percent Change	Rank of Percent Change
	2007/R	2008/P	2007	2008	2007	2008	2007-08	2007-08
	United States	\$38,615	\$39,751	--	--	100	100	2.9
<i><u>New England</u></i>								
Connecticut	\$54,981	\$56,248	1	1	142	142	2.3	41
Maine	\$33,991	\$35,381	34	33	88	89	4.1	9
Massachusetts	\$48,995	\$50,735	3	3	127	128	3.6	21
New Hampshire	\$41,639	\$42,830	9	9	108	108	2.9	32
Rhode Island	\$39,829	\$41,008	17	15	103	103	3.0	29
Vermont	\$37,483	\$38,880	21	22	97	98	3.7	16
<i><u>Mideast</u></i>								
Delaware	\$40,112	\$40,852	14	16	104	103	1.8	44
District of Columbia	\$62,484	\$64,991	--	--	162	163	4.0	--
Maryland	\$46,471	\$48,091	5	5	120	121	3.5	22
New Jersey	\$49,511	\$50,919	2	2	128	128	2.8	33
New York	\$46,364	\$48,076	6	6	120	121	3.7	18
Pennsylvania	\$38,793	\$40,265	19	19	100	101	3.8	13
<i><u>Great Lakes</u></i>								
Illinois	\$41,012	\$42,397	13	12	106	107	3.4	23
Indiana	\$33,215	\$34,103	40	39	86	86	2.7	37
Michigan	\$34,423	\$35,299	33	34	89	89	2.5	38
Ohio	\$34,468	\$35,511	32	32	89	89	3.0	28
Wisconsin	\$36,272	\$37,314	25	27	94	94	2.9	31
<i><u>Plains</u></i>								
Iowa	\$34,916	\$36,680	31	29	90	92	5.1	5
Kansas	\$36,525	\$37,978	23	24	95	96	4.0	12
Minnesota	\$41,105	\$42,772	12	10	106	108	4.1	10
Missouri	\$33,964	\$35,228	35	35	88	89	3.7	17
Nebraska	\$36,372	\$37,730	24	25	94	95	3.7	15
North Dakota	\$36,082	\$39,321	26	20	93	99	9.0	1
South Dakota	\$35,760	\$37,375	27	26	93	94	4.5	7
<i><u>Southeast</u></i>								
Alabama	\$32,419	\$33,643	42	41	84	85	3.8	14
Arkansas	\$30,177	\$31,266	47	47	78	79	3.6	19
Florida	\$38,417	\$39,070	20	21	99	98	1.7	45
Georgia	\$33,499	\$33,975	37	40	87	85	1.4	47
Kentucky	\$30,824	\$31,826	45	46	80	80	3.3	25
Louisiana	\$35,100	\$36,271	29	30	91	91	3.3	24
Mississippi	\$28,541	\$29,569	50	50	74	74	3.6	20
North Carolina	\$33,735	\$34,439	36	36	87	87	2.1	43

(continued)

continued

Per Capita Personal Income by State and Region: 2007 and 2008								
<i>(Dollars)</i>	Per Capita Personal Income		Rank in the US		Percent of the US Average		Percent Change	Rank of Percent Change
	2007/R	2008/P	2007	2008	2007	2008	2007-08	2007-08
	South Carolina	\$31,103	\$31,884	44	45	81	80	2.5
Tennessee	\$33,395	\$34,330	38	37	86	86	2.8	34
Virginia	\$41,727	\$42,876	8	8	108	108	2.8	36
West Virginia	\$29,385	\$30,831	49	48	76	78	4.9	6
<i>Southwest</i>								
Arizona	\$32,833	\$32,953	41	42	85	83	0.4	50
New Mexico	\$30,706	\$32,091	46	44	80	81	4.5	8
Oklahoma	\$34,997	\$36,899	30	28	91	93	5.4	4
Texas	\$37,083	\$38,575	22	23	96	97	4.0	11
<i>Rocky Mountain</i>								
Colorado	\$41,192	\$42,377	11	13	107	107	2.9	30
Idaho	\$31,804	\$32,133	43	43	82	81	1.0	49
Montana	\$33,225	\$34,256	39	38	86	86	3.1	27
Utah	\$29,831	\$30,291	48	49	77	76	1.5	46
Wyoming	\$47,047	\$49,719	4	4	122	125	5.7	3
<i>Far West</i>								
Alaska	\$40,042	\$43,321	15	7	104	109	8.2	2
California	\$41,805	\$42,696	7	11	108	107	2.1	42
Hawaii	\$39,242	\$40,490	18	17	102	102	3.2	26
Nevada	\$39,853	\$40,353	16	18	103	102	1.3	48
Oregon	\$35,143	\$35,956	28	31	91	90	2.3	40
Washington	\$41,203	\$42,356	10	14	107	107	2.8	35
<i>BEA regions</i>								
New England	\$47,221	\$48,715	1	1	122	123	3.2	4
Mideast	\$45,058	\$46,635	2	2	117	117	3.5	3
Great Lakes	\$36,318	\$37,405	6	6	94	94	3.0	5
Plains	\$36,661	\$38,217	4	4	95	96	4.2	1
Southeast	\$34,859	\$35,706	8	8	90	90	2.4	7
Southwest	\$35,768	\$37,052	7	7	93	93	3.6	2
Rocky Mountain	\$36,527	\$37,459	5	5	95	94	2.6	6
Far West	\$41,056	\$41,994	3	3	106	106	2.3	8

Notes: R= revised, P= preliminary

Source: US Department of Commerce, Bureau of Economic Analysis

In 2008, state per capita personal income ranged from \$56,248 in Connecticut to \$29,569 in Mississippi. There were two changes in the composition of the top 10 states from 2007: Alaska moved up from 15th to the 7th position while Minnesota moved up from 12th to 10th position displacing California and Colorado, respectively, from the top ten.

The bottom ten states in 2008 were also ranked in the bottom ten last year. The Southeast region of the country accounted for six of the ten states with the lowest per capita incomes: Alabama, Kentucky, South Carolina, West Virginia, Arkansas, and Mississippi. The Rocky Mountain and Southwest regions accounted for two states each (Idaho, Utah and Arizona, New Mexico respectively).

Table 2

States With the Highest Per Capita Personal Income: 2007 and 2008								
<i>(Dollars)</i>	Per Capita Personal Income		Rank in the US		Percent of the US Average		Percent Change	Rank of Percent Change
	2007/R	2008/P	2007	2008	2007	2008	2007-08	2007-08
United States	\$38,615	\$39,751	--	--	100	100	2.9	--
Connecticut	\$54,981	\$56,248	1	1	142	142	2.3	41
New Jersey	\$49,511	\$50,919	2	2	128	128	2.8	33
Massachusetts	\$48,995	\$50,735	3	3	127	128	3.6	21
Wyoming	\$47,047	\$49,719	4	4	122	125	5.7	3
Maryland	\$46,471	\$48,091	5	5	120	121	3.5	22
New York	\$46,364	\$48,076	6	6	120	121	3.7	18
Alaska	\$40,042	\$43,321	15	7	104	109	8.2	2
Virginia	\$41,727	\$42,876	8	8	108	108	2.8	36
New Hampshire	\$41,639	\$42,830	9	9	108	108	2.9	32
Minnesota	\$41,105	\$42,772	12	10	106	108	4.1	10

Notes: R= revised, P= preliminary
Source: US Department of Commerce, Bureau of Economic Analysis

Table 3

States With the Lowest Per Capita Personal Income: 2007 and 2008								
<i>(Dollars)</i>	Per Capita Personal Income		Rank in the US		Percent of the US Average		Percent Change	Rank of Percent Change
	2007/R	2008/P	2007	2008	2007	2008	2007-08	2007-08
United States	\$38,615	\$39,751	--	--	100	100	2.9	--
Mississippi	\$28,541	\$29,569	50	50	74	74	3.6	20
Utah	\$29,831	\$30,291	48	49	77	76	1.5	46
West Virginia	\$29,385	\$30,831	49	48	76	78	4.9	6
Arkansas	\$30,177	\$31,266	47	47	78	79	3.6	19
Kentucky	\$30,824	\$31,826	45	46	80	80	3.3	25
South Carolina	\$31,103	\$31,884	44	45	81	80	2.5	39
New Mexico	\$30,706	\$32,091	46	44	80	81	4.5	8
Idaho	\$31,804	\$32,133	43	43	82	81	1.0	49
Arizona	\$32,833	\$32,953	41	42	85	83	0.4	50
Alabama	\$32,419	\$33,643	42	41	84	85	3.8	14

Notes: R= revised, P= preliminary
Source: US Department of Commerce, Bureau of Economic Analysis

Metropolitan Area (MSA) and County Per Capita Personal Income

Personal income growth slowed in 2007 in most of the nation's metropolitan statistical areas (MSAs). On average, MSA per capita personal income grew 6.2 percent in 2007, down from 6.8 percent in 2006. Personal income growth slowed in 208 MSAs, increased in 144, and remained unchanged in 11. All metropolitan areas that contained New Jersey counties saw their per capita income decline from 2006 levels with the exception of Ocean City MSA which experienced a slight expansion (0.2%). According to the 2007 estimates, four of the seven metropolitan areas that included New Jersey counties had a higher 2007 per capita personal income than the United States (\$38,632).

Table 4

Per Capita Personal Income for New Jersey Metropolitan Statistical Areas				
	Per Capita Personal Income			US Rank
	2005R	2006R	2007P	2007
United States	\$34,757	\$36,714	\$38,632	---
Metropolitan portion of the United States	\$36,483	\$38,564	\$40,536	---
New Jersey	\$46,813	\$49,511	\$50,919	2
Metropolitan Portion	\$43,651	\$46,813	\$49,511	---
<i>Metropolitan Statistical Areas</i>				
Allentown-Bethlehem-Easton, PA-NJ (MSA)	\$33,677	\$35,369	\$37,066	100
Atlantic City-Hammonton, NJ (MSA)	\$33,589	\$35,480	\$36,636	109
New York-Northern New Jersey-Long Island, NY-NJ-PA (MSA)	\$46,221	\$49,789	\$53,423	8
Ocean City, NJ (MSA)	\$39,059	\$41,068	\$43,232	36
Philadelphia-Camden-Wilmington, PA-NJ- DE-MD (MSA)	\$40,948	\$43,364	\$45,460	26
Trenton-Ewing, NJ (MSA)	\$45,740	\$49,847	\$52,388	10
Vineland-Millville-Bridgeton, NJ (MSA)	\$27,378	\$28,834	\$29,689	280

Notes: R= revised, P= preliminary

The metropolitan area definitions used by BEA for its personal income estimates are the new county-based definitions issued by the Office of Management and Budget in June 2003 (with revisions released February 2004, March 2005, December 2005, December 2006 and November 2007) for federal statistical purposes.

Source: US Department of Commerce, Bureau of Economic Analysis

The Bridgeport-Stamford-Norwalk, CT, metropolitan area led the nation with a per capita personal income of \$80,192 in 2007. Two of the country's 10 wealthiest metropolitan areas were in New Jersey: New York-Northern New Jersey-Long Island, NY-NJ-PA metropolitan area, which includes the New Jersey counties of Bergen, Essex, Hudson, Hunterdon, Middlesex, Monmouth, Morris, Ocean, Passaic, Somerset, Sussex and Union, was ranked eighth with a per capita personal income of \$53,423, and Trenton-Ewing (Mercer County) metropolitan area with a per capita personal income of \$52,388 ranked tenth among all metro areas in the United States.

Table 5

Ten Metropolitan Areas with the Highest Per Capita Personal Income						
Area	Per capita personal income ¹					
	Dollars			Rank in United States	Percent change from preceding period ²	
	2005	2006	2007p	2007p	2006	2007p
United States	\$34,757	\$36,714	\$38,632	...	5.6	5.2
Metropolitan portion of the United States	\$36,483	\$38,564	\$40,536	...	5.7	5.1
<i>Metropolitan Statistical Areas³</i>						
Bridgeport-Stamford-Norwalk, CT	\$68,840	\$74,281	\$80,192	1	7.9	8.0
Naples-Marco Island, FL	\$54,166	\$57,446	\$61,788	2	6.1	7.6
San Francisco-Oakland-Fremont, CA	\$54,191	\$57,747	\$61,337	3	6.6	6.2
San Jose-Sunnyvale-Santa Clara, CA	\$51,277	\$55,020	\$58,716	4	7.3	6.7
Sebastian-Vero Beach, FL	\$50,369	\$54,045	\$58,144	5	7.3	7.6
Washington-Arlington-Alexandria, DC-VA-MD-WV	\$49,442	\$51,868	\$54,211	6	4.9	4.5
Boston-Cambridge-Quincy, MA-NH	\$47,491	\$50,542	\$53,763	7	6.4	6.4
New York-Northern New Jersey-Long Island, NY-NJ-PA	\$46,221	\$49,789	\$53,423	8	7.7	7.3
Boulder, CO	\$47,032	\$49,628	\$52,438	9	5.5	5.7
Trenton-Ewing, NJ	\$45,740	\$49,847	\$52,388	10	9.0	5.1

P= preliminary

¹Per capita personal income was computed using Census Bureau midyear population estimates.

²Percent change calculated from unrounded data.

³The metropolitan area definitions used by BEA for its personal income estimates are the new county-based definitions issued by the Office of Management and Budget in June 2003 (with revisions released February 2004, March 2005, December 2005, December 2006 and November 2007) for federal statistical purposes.

Source: US Department of Commerce, Bureau of Economic Analysis

Of New Jersey's 21 counties, 16 had a higher per capita personal income than the nation in 2007. Morris County led the state with a per capita personal income of \$71,713 followed by Somerset (\$70,949), Bergen (\$67,125) and Hunterdon (\$66,449) counties. These four counties also ranked in the top 25 among all U.S. counties. Morris ranked 9th nationally while Somerset county was ranked 11th, Bergen 16th and Hunterdon 17th. Nationally, Teton county, Wyoming led all 3,111 counties with a per capita personal income of \$132,728 in 2007, New York county, New York, was second with a per capita personal income of \$120,790, and Loving county, Texas was third with per capita personal income of \$99,593.

New Jersey also had four other counties which ranked in the top 100 nationwide: Monmouth ranked 50th (\$54,801), Mercer 63rd (\$52,255), Union 74th (\$50,797) and Essex county was 81st (\$50,156). Overall, New Jersey had 12 counties which ranked among the 250 highest of the 3,111 counties in the United States.

Table 6

Per Capita Personal Income: New Jersey Counties, 2007			
Area Name	2005R	2006R	2007P
New Jersey	\$43,651	\$46,813	\$49,511
Morris	\$63,412	\$67,788	\$71,713
Somerset	\$62,018	\$66,610	\$70,949
Bergen	\$56,877	\$62,007	\$67,125
Hunterdon	\$58,520	\$62,751	\$66,449
Monmouth	\$47,694	\$51,437	\$54,801
Mercer	\$45,549	\$49,195	\$52,255
Union	\$44,062	\$47,851	\$50,797
Essex	\$43,866	\$47,427	\$50,156
Middlesex	\$41,066	\$44,291	\$46,674
Sussex	\$41,739	\$44,335	\$46,630
Burlington	\$40,090	\$42,370	\$44,077
Cape May	\$38,884	\$40,636	\$42,052
Warren	\$36,269	\$38,445	\$40,426
Passaic	\$34,869	\$37,149	\$39,389
Hudson	\$34,588	\$37,062	\$39,292
Camden	\$35,895	\$37,910	\$39,266
Gloucester	\$34,309	\$36,076	\$37,331
Ocean	\$33,910	\$35,856	\$37,228
Atlantic	\$33,924	\$35,276	\$36,325
Salem	\$32,419	\$33,829	\$35,236
Cumberland	\$27,469	\$28,647	\$29,599

Notes: R= revised, P= preliminary
Source: US Department of Commerce, Bureau of Economic Analysis

Table 7

Top 25 US Counties Ranked by Per Capita Personal Income: 2007		
Rank	County	2007
1	Teton, WY	\$132,728
2	New York, NY	\$120,790
3	Loving, TX	\$99,593
4	Pitkin, CO	\$93,465
5	Marin, CA	\$91,483
6	Fairfield, CT	\$81,576
7	Westchester, NY	\$74,878
8	San Mateo, CA	\$71,753
9	Morris, NJ	\$71,713
10	San Francisco, CA	\$71,342
11	Somerset, NJ	\$70,949
12	Alexandria (Independent City), VA	\$70,632
13	Arlington, VA	\$68,270
14	Fairfax, Fairfax City + Falls Church, VA	\$67,909
15	Montgomery, MD	\$67,525
16	Bergen, NJ	\$67,125
17	Hunterdon, NJ	\$66,449
18	Sully, SD	\$64,352
19	Blaine, ID	\$64,207
20	Collier, FL	\$63,276
21	Nassau, NY	\$62,981
22	District of Columbia, DC	\$62,484
23	Norfolk, MA	\$62,129
24	Montgomery, PA	\$62,086
25	Martin, FL	\$61,868

Source: US Department of Commerce, Bureau of Economic Analysis

Definitions

Personal income is the income received by all persons from all sources. Personal income is the sum of net earnings by place of residence, rental income of persons, personal dividend income, personal interest income and personal current transfer receipts. Personal income is measured before the deduction of personal income taxes and other personal taxes and is reported in current dollars (no adjustment is made for price changes).

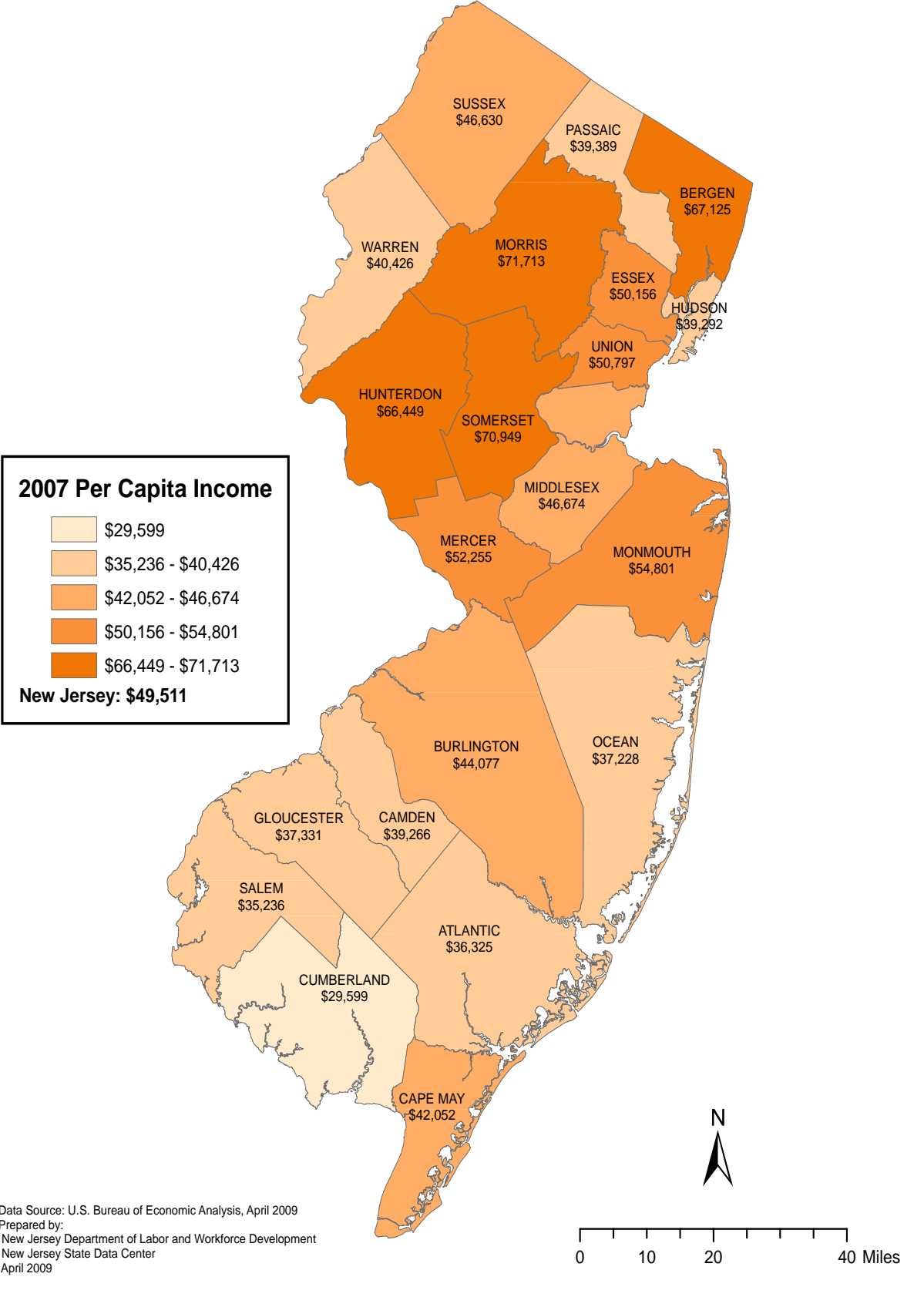
Per capita personal income is calculated as the personal income of residents of a given area divided by the resident population of the area. In computing per capita personal income, BEA uses the Census Bureau's annual midyear population estimates.

The metropolitan area definitions used by the BEA for its entire series of personal income estimates are the county-based definitions issued by the Office of Management and Budget (OMB) for federal statistical purposes which were last updated November 2007. OMB's general concept of a metropolitan area is that of a geographic area consisting of a large population nucleus together with adjacent communities having a high degree of economic and social integration with the nucleus.

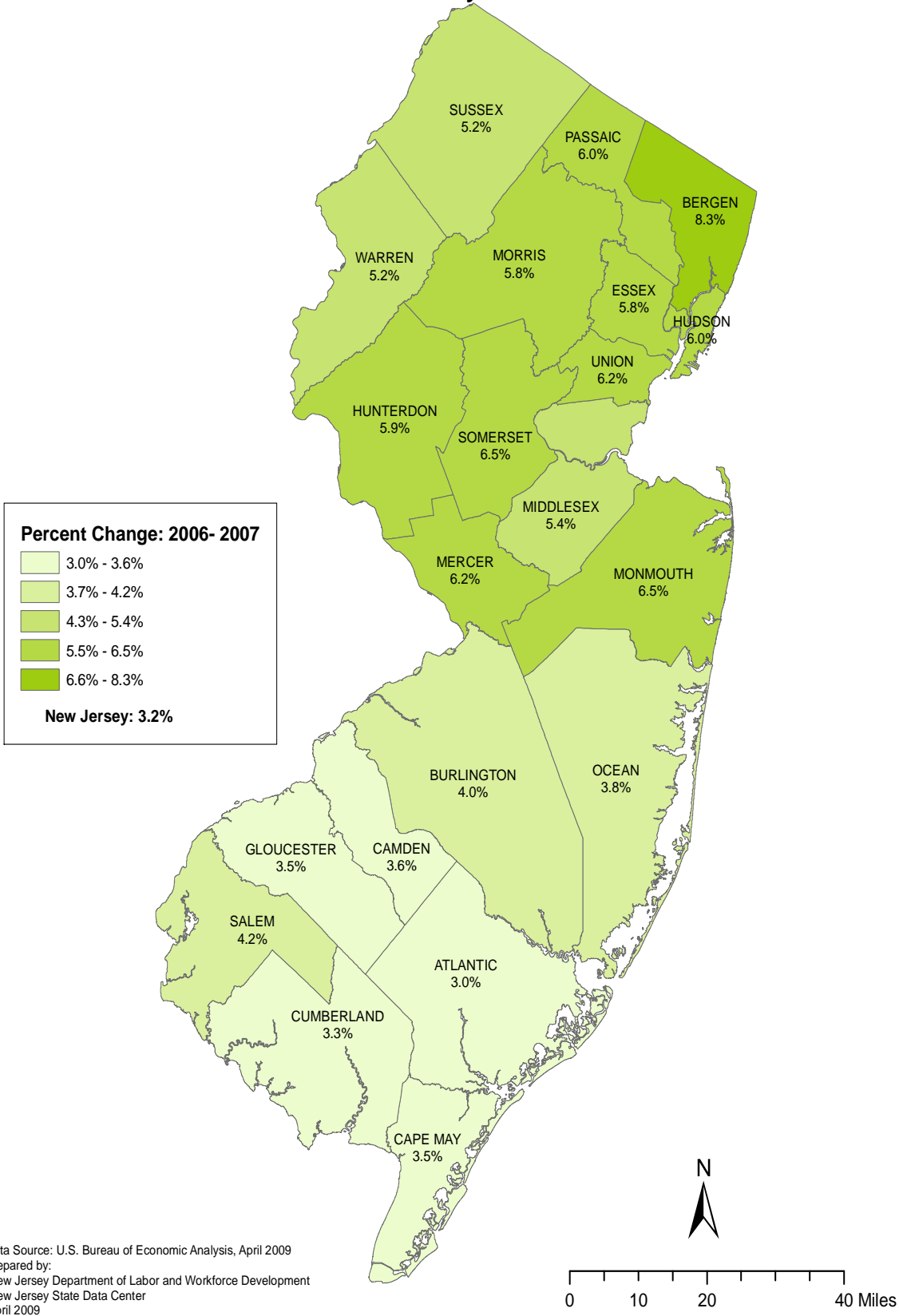
Data Availability

The 2008 preliminary total and per capita personal income and revised 2005-2007 estimates for states and the 2007 personal income and revised 2005 and 2006 estimates for metropolitan areas and counties are available from the New Jersey Department of Labor and Workforce Development on the Internet (http://lwd.dol.state.nj.us/labor/lpa/LMI_index.html). Detailed personal income estimates for metropolitan statistical areas, micropolitan statistical areas, metropolitan divisions, and combined statistical areas are available on the BEA Internet site (<http://www.bea.gov>). For more information, please contact the New Jersey Department of Labor and Workforce Development, Division of Labor Market & Demographic Research, P.O. Box 388 Trenton, NJ 08625-0388. Telephone: 609.984.7349. E-mail: Walter.Nyakanga@dol.state.nj.us

2007 Per Capita Income: New Jersey Counties



Percent Change in Per Capita Income: 2006 - 2007 New Jersey Counties



Comparative Economic Indicators: New Jersey and United States

New Jersey Data (Seasonally adjusted)			Latest Data	Data Series	Page Number	Year-to-Date % change from year ago (Unadjusted)	
Latest Month	Month Ago	Year Ago				NJ	US
\$440,318	\$442,450	\$441,236	1 st Quarter 09	Personal Income (millions)*	----	-0.2	0.8
34,169	33,979	46,311	Apr	New Vehicle Registrations***	S-16	-29.5	-36.6
824	1,294	2,197	Apr	Dwelling Units Authorized**	S-14	-44.5	-48.8
3,935.1	3,941.3	4,070.2	May	Nonfarm Payroll Employment (000)	S-6	-3.1	-3.4
3,282.6	3,289.2	3,419.8	May	Private Sector Employment (000)	S-6	-3.8	-4.2
141.9	146.8	165.8	May	Construction Employment (000)	S-6	-12.3	-12.6
271.7	271.4	301.9	May	Manufacturing Employment (000)	S-8	-9.7	-10.0
258.9	259.0	272.3	May	Financial Activities Employment (000)	S-10	-5.3	-4.3
400.6	384.4	230.1	May	Total Unemployment (000)	S-2	71.7	71.4
8.8	8.4	5.1	May	Total Unemployment Rate (%)	S-4	----	----
230.9	220.6	124.0	May	Insured Unemployment Volume (000)	S-18	70.1	96.0
5.9	5.7	3.2	May	Insured Unemployment Rate (%)	S-18	----	----
41.3	40.6	42.2	May	Average Factory Workweek (hours)**	S-26	-1.9	-4.2
18.48	18.60	17.79	May	Average Factory Hourly Earnings**	S-26	3.8	2.7
763.22	755.16	750.74	May	Average Factory Weekly Earnings**	S-26	1.9	-1.6

Notes: See pages S-29 to S-32 for notes on indicators' series. (Private service-providing data are found in 13-month tables on page S-21.)

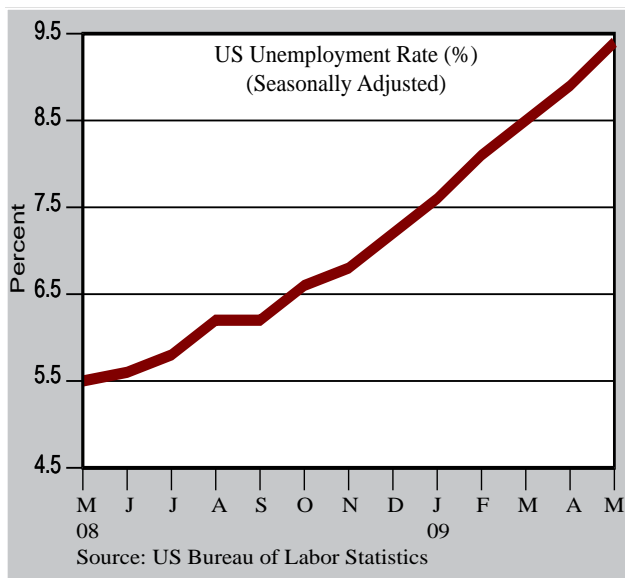
* *Latest Month - 1st Qtr. 2009; Month Ago - 4th Qtr. 2008; Year Ago - 1st Qtr. 2008 (annualized data)*

** *Not seasonally adjusted.*

*** *Includes only total new cars and new light trucks/vans (weight class 0-10,000 lbs.) registered in NJ.*

Economic Situation: The Nation

During May, signs of improvement in the national economy were tempered by ongoing weakness in the labor market. While the pace of layoffs eased for the fourth consecutive month in May, the unemployment rate rose to a 25-year high of 9.4 percent. Increases were reported in retail sales and consumer confidence as inflation remained in check and consumer and wholesale prices rose modestly. Monthly gains in home sales and construction provided hope for the beginning of a turnaround in the troubled housing market.



Employment fell by 345,000 in May, or by about half of the average monthly decline of 643,000 recorded during the previous six months. The pace of layoffs has slowed since January when monthly job losses peaked at 741,000, the highest level since 1949. Since the beginning of the recession in December 2007, payrolls have declined by 6.0 million.

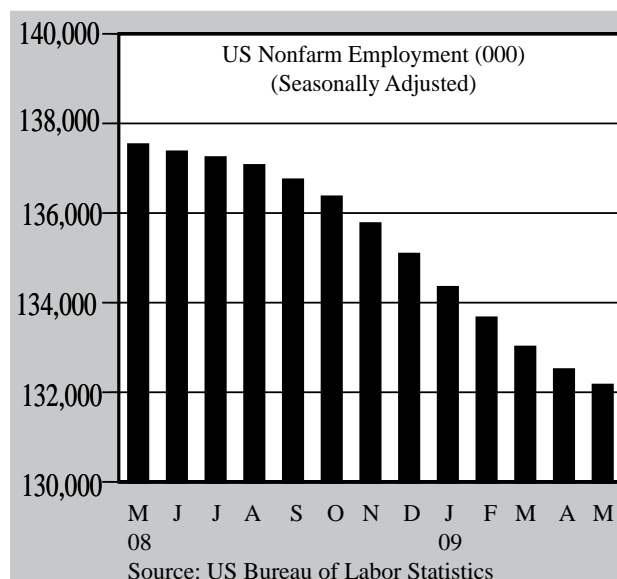
The unemployment rate rose to 9.4 percent during May from 8.9 percent in April and has risen by 4.5 percentage points since the onset of the recession in December 2007.

The number of unemployed persons has grown by 7.0 million to 14.5 million since the recession began, while the number of long-term unemployed (27 weeks or longer) has tripled, rising to 3.9 million.

Monthly employment losses were widespread, with the steepest decline occurring in manufacturing (-156,000) where 1.8 million jobs have been lost since the start of the recession. Compared with the previous six months, the rate of employment decline moderated in construction (-59,000) and in several service-providing industries, including professional and business services (-51,000) and retail trade (-18,000). The health care industry continued to grow, adding 24,000 jobs in May and 309,800 positions compared with a year ago.

Retail sales rose in May by 0.5 percent, following declines during the previous two months. Dealer incentives sparked a rebound in auto sales (+0.5%) helping to drive the monthly increase in retail sales which was the largest gain since January 2009 (+1.7%). Fueled by recent increases in gasoline prices, sales at gasoline stations increased by 3.6 percent during May, but were down by 33.8 percent compared with a year ago. Total retail sales were 9.6 percent below the level recorded in May 2008, with sales at motor vehicle and parts dealers down by 19.6 percent over the year.

Consumer prices advanced by a modest 0.1 percent in May after holding steady in April. The Consumer Price Index has fallen



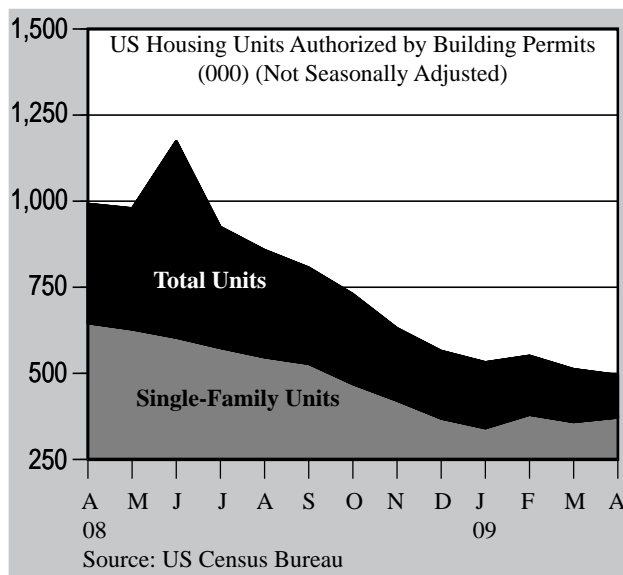
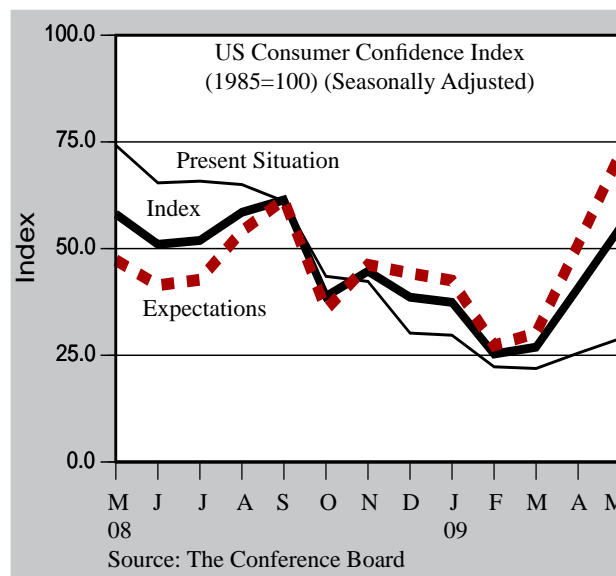
Economic Situation: The Nation

by 1.3 percent over the past 12 months; this was the largest decline since April 1950 and was mainly due to a decrease in the energy index of 27.3 percent. Excluding the more volatile categories of food and energy, core prices increased by 0.1 percent in May and by 1.8 percent during the past year.

Helped by moderating prices and improving economic conditions, consumer confidence continued to increase in May, rising by 34.6 percent following a large gain in April and reaching the highest level in eight months. Consumers' expectations for the next six months rose sharply (+41.8%), while their assessment of the present situation improved moderately (+13.3%).

The housing sector showed some signs of improvement, with monthly gains recorded in home sales and construction. Housing starts rose by 17.2 percent in May, the largest gain in three months, but remained 45.2 percent below the level of a year ago. The monthly increase was largely due to a surge in construction of multi-family units, but single-family home starts rose by 7.5 percent, increasing for the third consecutive month. Building permits, which provide an indicator of future construction activity, also rose in May, advancing by 4.0 percent, but were 47.0 percent lower than in May 2008.

New home construction continued to be hampered by the high levels of unsold homes and record numbers of foreclosures which have added to the supply. According to RealtyTrac, the number of foreclosures fell by 6.0 percent nationwide in May, but were up by 17.8 percent from a year ago making May 2009 the third highest month on record.

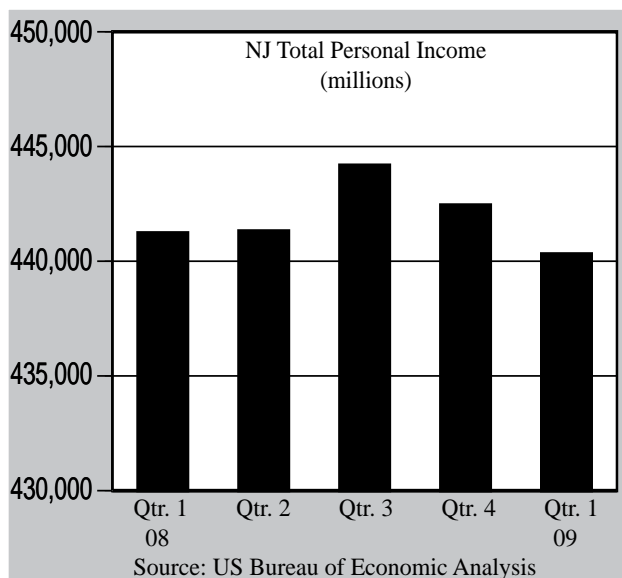


Reflecting low home mortgage rates and the impact of a new \$8,000 tax credit for first-time home buyers, pending home sales and sales of new and existing homes all posted increases during April. Pending home sales rose for the third consecutive month in April increasing by 6.7 percent, the largest monthly gain since October 2001 in the pending home sale index which reports contract signings and is a barometer of future home sales data.

Sales of new and existing homes rose by 0.3 and 2.9 percent, respectively, during April. Compared with a year ago, sales of new homes were down by 34 percent, while sales of existing homes fell by 3.5 percent. The inventories of unsold homes represented supplies of over 10 months at current sales rates for both new and existing properties.

Economic Situation: The State

New Jersey continued to be affected by the recession in the U.S. economy with economic patterns here mirroring trends seen nationally. Recently released data confirm that economic growth during 2008 slowed in New Jersey, as well as in most other states. Personal income during the first quarter of 2009 declined at the same rate as the nation. Employment losses continued in May, but at a slower pace than during the previous six months, while the unemployment rate rose to 8.8 percent, its highest level in nearly 17 years. On a positive note, there was some good news in the troubled housing market, consumer prices continued to moderate and consumer confidence in the Middle Atlantic region improved for the second consecutive month.

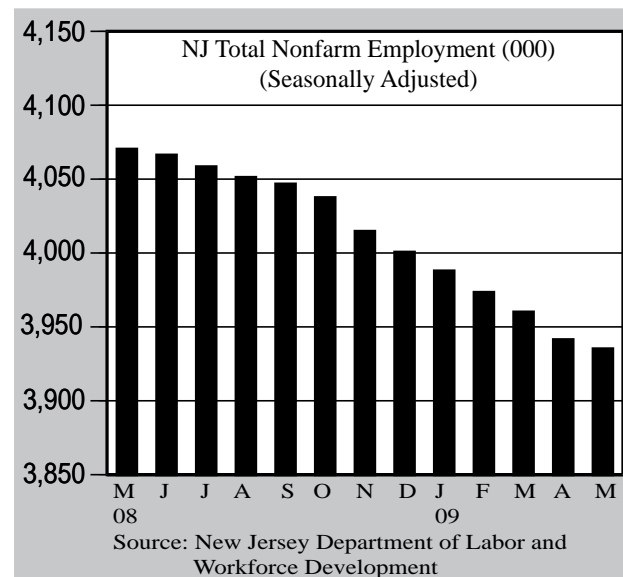


Economic growth slowed in New Jersey during 2008, with gross domestic product (GDP) declining from 0.9 percent in 2007 to 0.6 percent in 2008. The economic slowdown was widespread during 2008 with slower growth reported in 38 states, causing U.S. GDP by state to fall to 0.7 percent from 2.0 percent in 2007. New Jersey's per capita GDP in 2008 rose to \$44,957, which was nearly 19 percent above the national average of \$37,899, ranking New Jersey fifth among all states in per capita GDP.

During the first quarter of 2009, personal income declined for the second consecutive quarter in New Jersey, falling by 0.5 percent following a decrease of 0.4 percent in the fourth quarter of 2008. The rate of decline in New Jersey matched the pace set nationally. Personal income declined in 37 states during the first quarter, reflecting job losses, lower interest rates and smaller dividend payments.

Employment declined by 6,200 in New Jersey during May 2009, the smallest monthly drop since September 2008. The job loss was less than half of the average monthly decrease recorded during the previous six months (-16,000). Since the onset of the national recession in December 2007, New Jersey payrolls have fallen by 151,100, or by 3.7 percent, compared with a decline of 4.3 percent nationally over the same period.

Monthly job losses were reported in six of 10 supersectors, with the largest declines occurring in trade, transportation and utilities (-5,800), construction (-4,900) and information (-1,100). Businesses hiring for the summer season contributed to a gain of 5,200 in leisure and hospitality, while payrolls increased by 1,300 in "other services" due to hiring at auto repair and personal care firms.

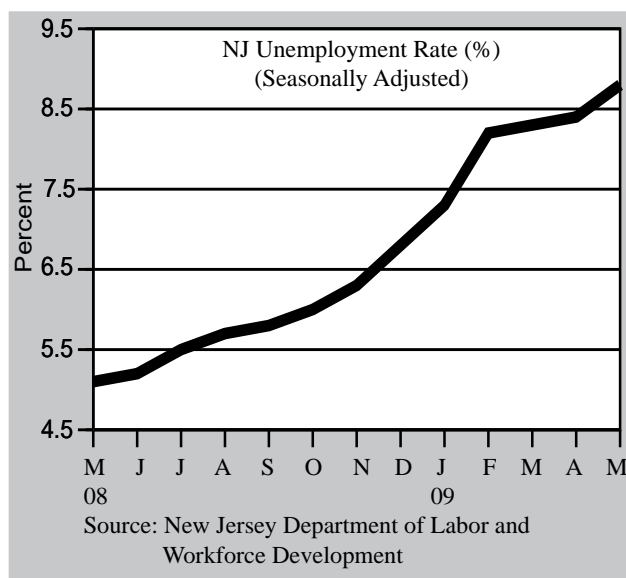


Economic Situation: The State

The state's unemployment rate rose by 0.4 percentage point to 8.8 percent in May, but remained below the national rate which advanced from 8.9 to 9.4 percent during the month. The Garden State's jobless rate had not reached 8.8 percent since August 1992.

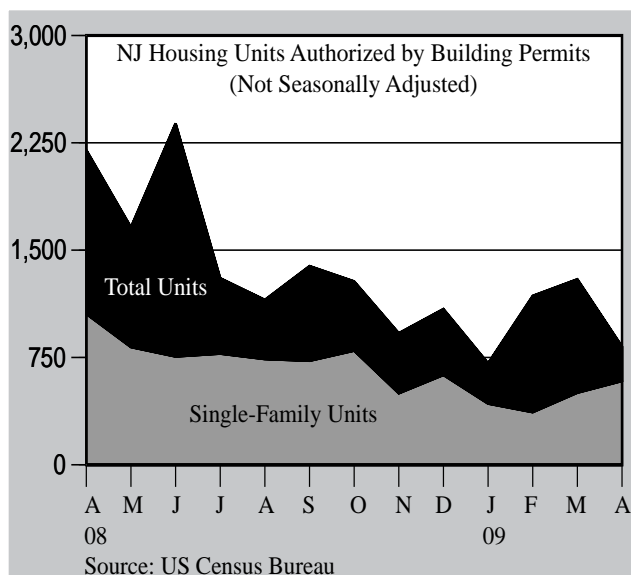
The insured unemployment rate (IUR), which is based solely on employment covered by unemployment insurance, rose to 5.9 percent in May, up from 5.7 percent in April and from 3.2 percent a year ago. The IUR had not reached 5.9 percent since February 1977. The number of claimants exhausting unemployment benefits during the first five months of 2009 was up by 60.4 percent, compared with the same period in 2008.

Consumer confidence continued to rebound in the Middle Atlantic region, increasing for the second consecutive month in May (+10.7%). The index was up by 0.7 percent compared to a year ago, as consumers raised their expectations for the next six months (+58.2%) despite a decline in their assessment of current economic conditions (-62.9%).



Contributing to the improved outlook, consumer prices rose moderately in the area covering northern New Jersey and New York, increasing 0.2 percent on an unadjusted basis during May, compared with an average increase of 0.3 percent for all U.S. cities. Prices were down by 0.1 percent over the year in the northern New Jersey area, the first drop since 1956, primarily due to large declines in energy prices.

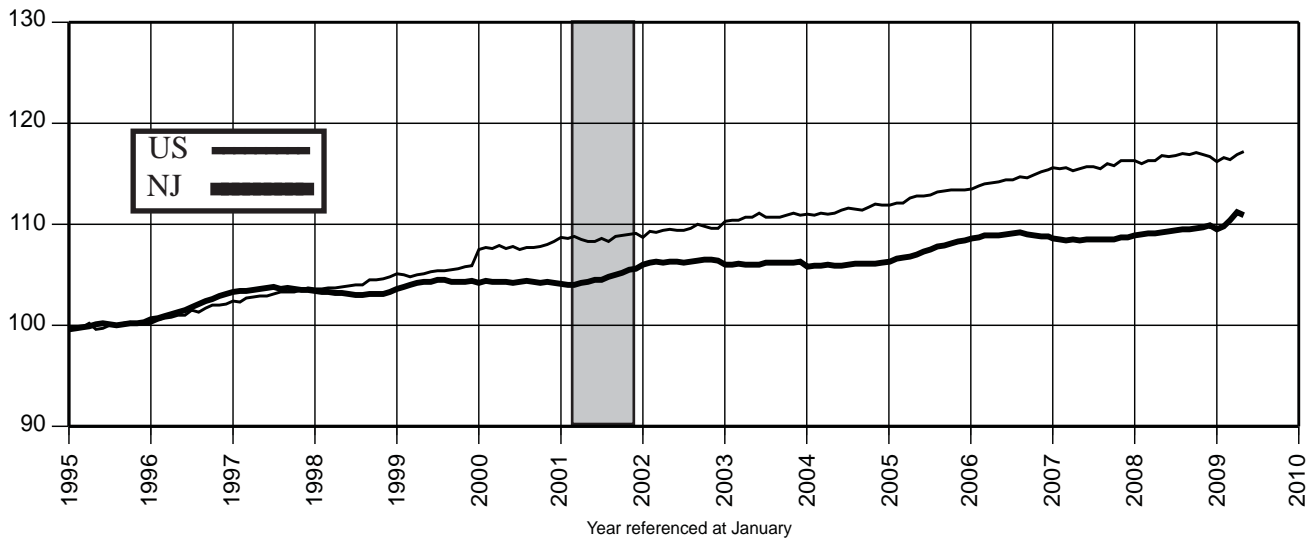
Vehicle registrations during the first four months of 2009 were down by 29.5 percent in New Jersey compared with a decline of 36.6 percent nationally. Year-to-date registrations were down in New Jersey for both passenger cars (-26.3%) and light trucks and vans (-33.3%).



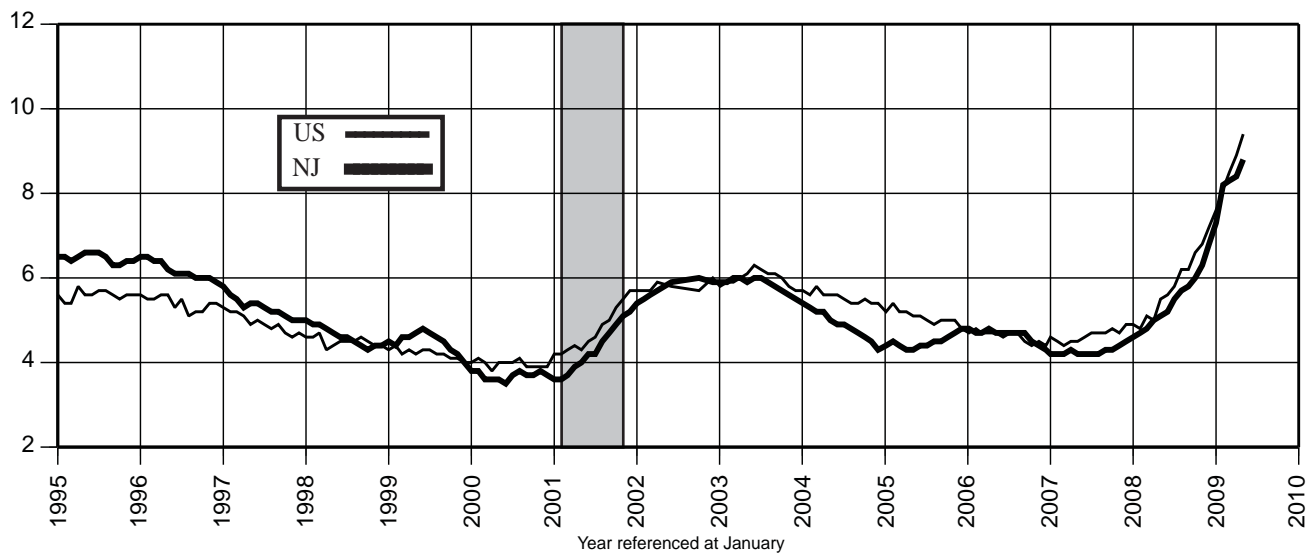
There was some good news in the housing market as pending home sales in the Northeast rose by nearly 33.0 percent in April and were up by 0.8 percent from a year ago. Existing home sales gained 11.6 percent during April, with the summer outlook buoyed by the surge in pending home sales. Sales of new homes remained flat during April.

In the Northeast, housing starts and building permits rose during May by 2.0 and 5.7 percent, respectively, but both remained about 60 percent below the levels of a year ago. From January through April, planned homebuilding in New Jersey was down by 44.5 percent compared with the first four months of 2008.

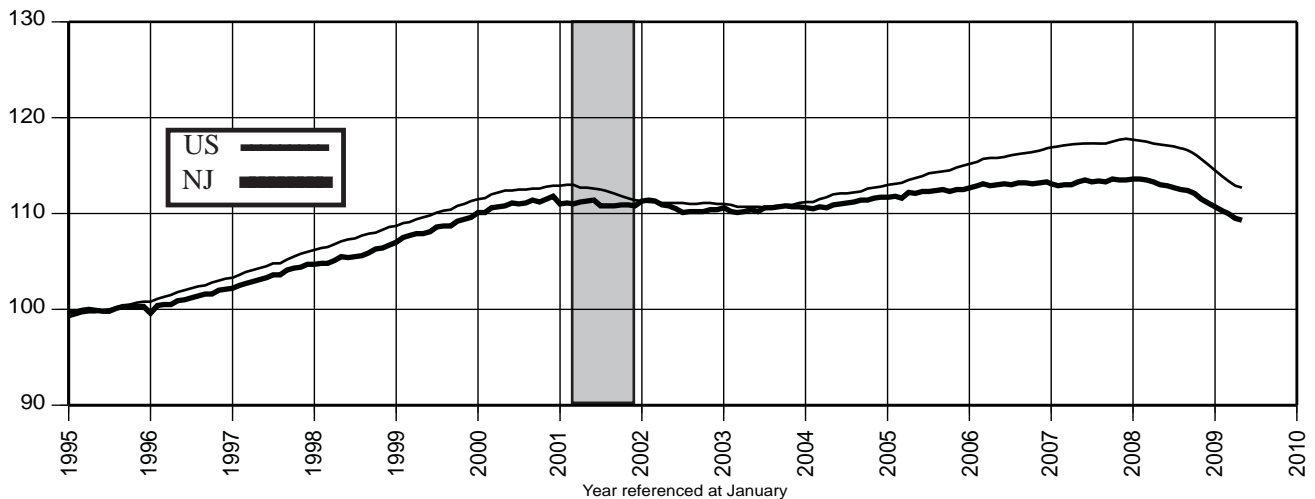
Civilian Labor Force (1995=100)



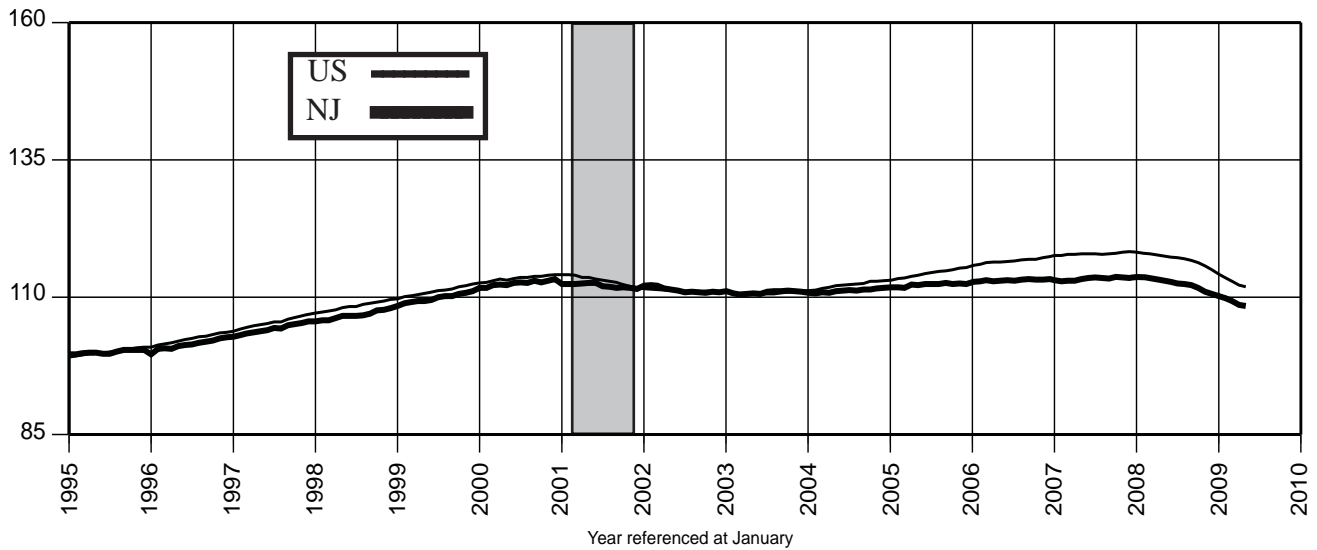
Unemployment Rate (%)



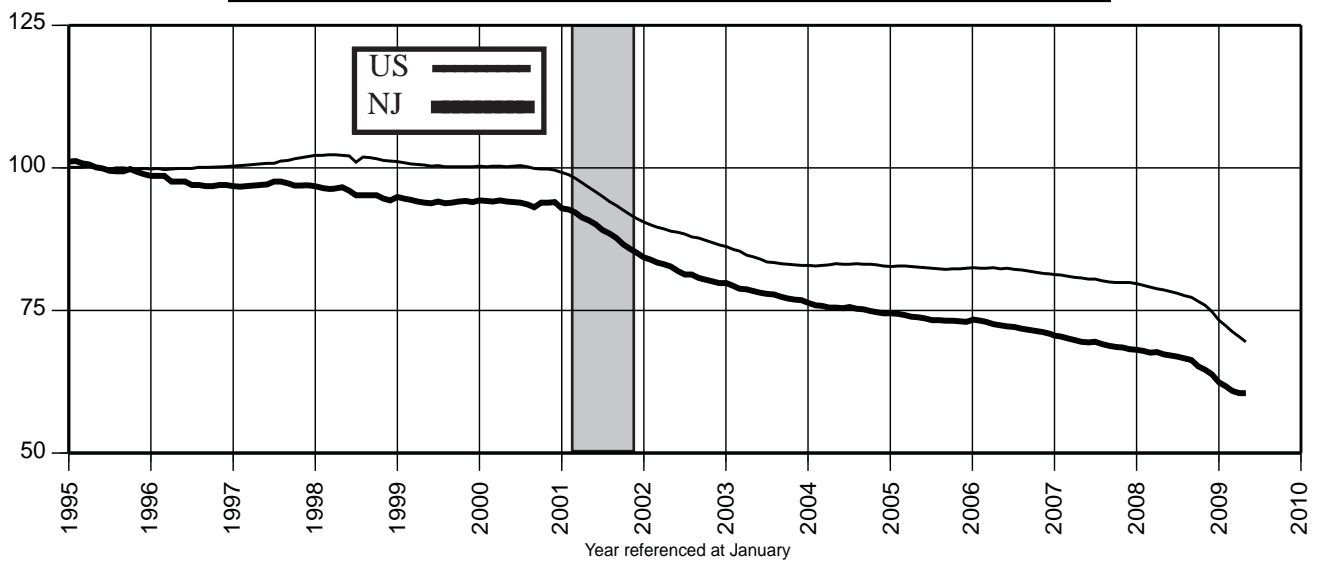
Nonfarm Payroll Employment (1995=100)



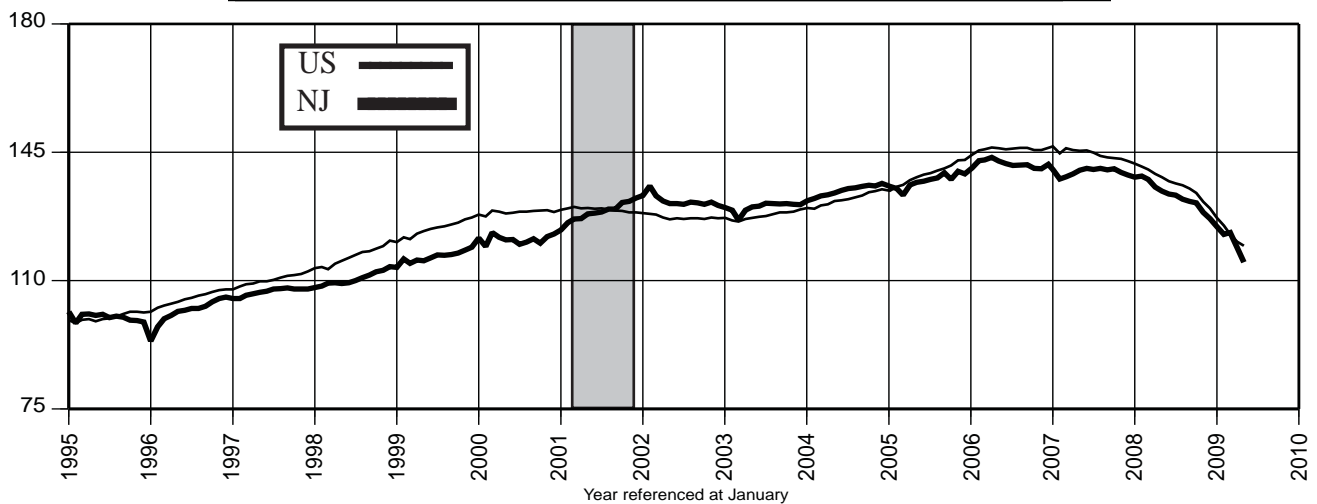
Private Sector Employment (1995=100)



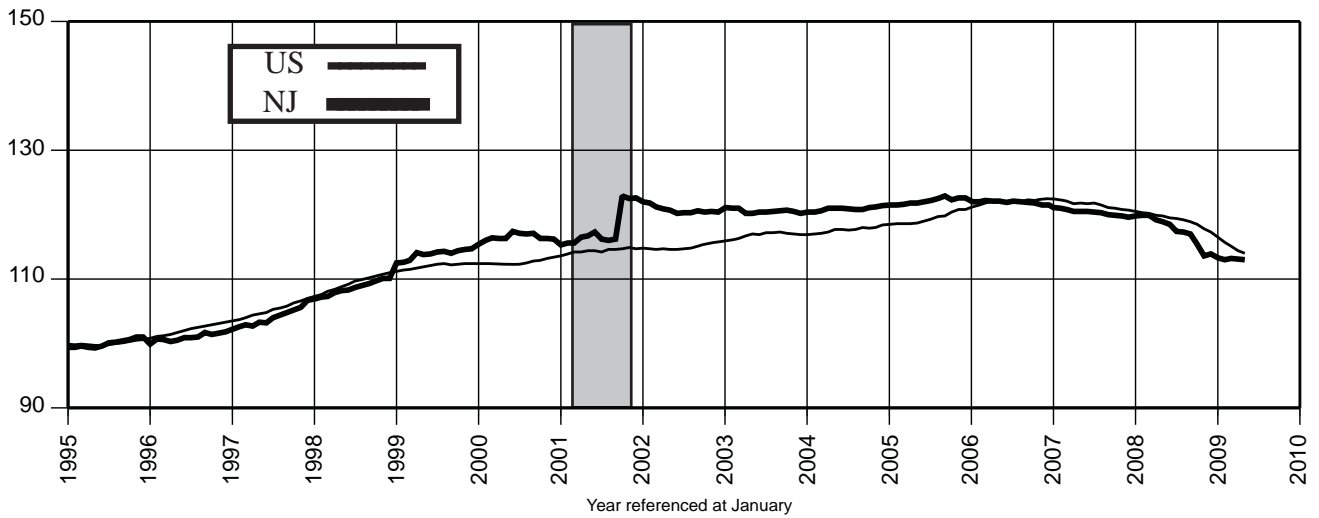
Manufacturing Employment (1995=100)



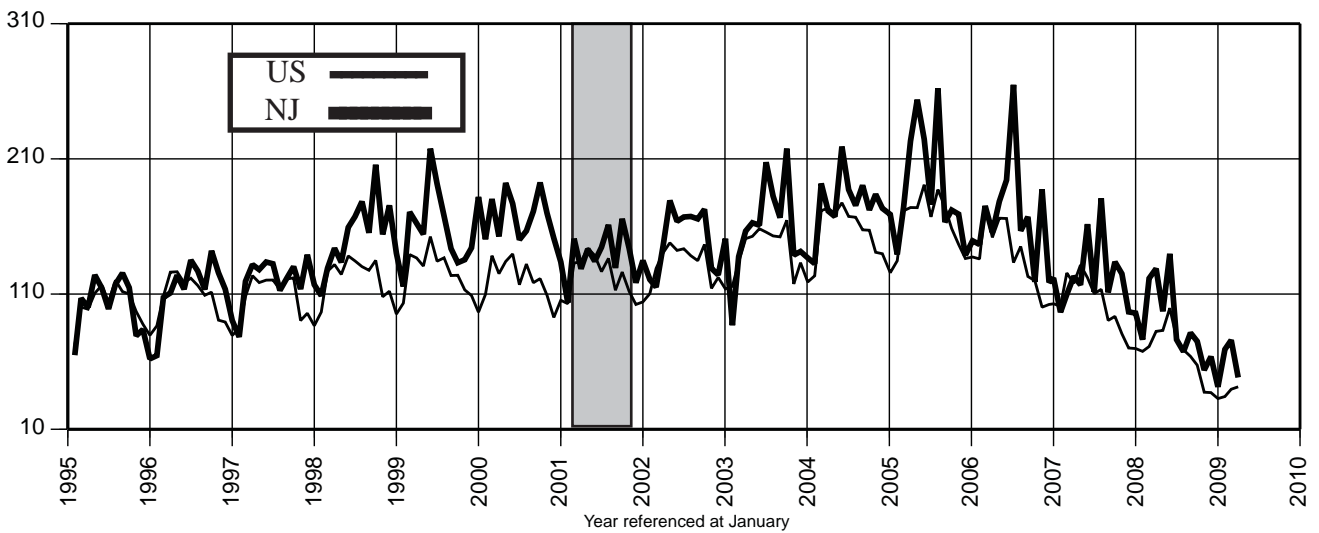
Construction Employment (1995=100)



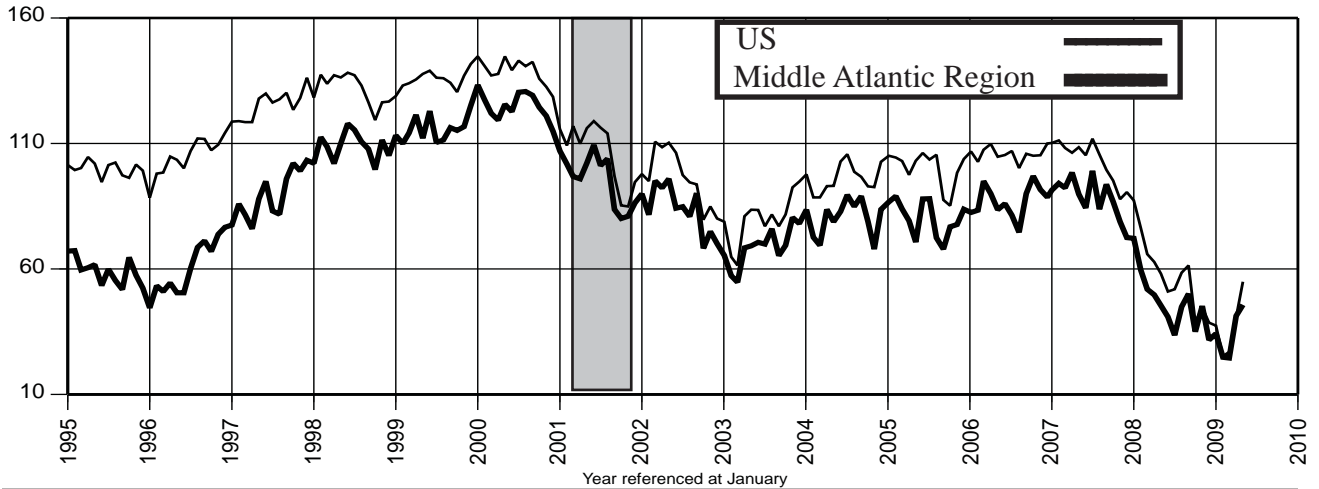
Financial Activities Employment (1995=100)



Dwelling Units Authorized (1995=100)-Unadj.



Consumer Confidence Index (1985=100)-Unadj.



Northern Region

Seven-Eleven is moving ahead with expansion plans within New Jersey. The company plans to open 25 new stores throughout the state by the end of 2009. New sites within Essex County include Montclair and Verona.

In May, Essex County held an 'Employment Expo' at Essex County Community College (Newark) that attracted nearly 8,000 job seekers. Over 100 private sector employers attended. Several government agencies were also on site to provide information regarding services. In addition, workshops, such as resume writing and

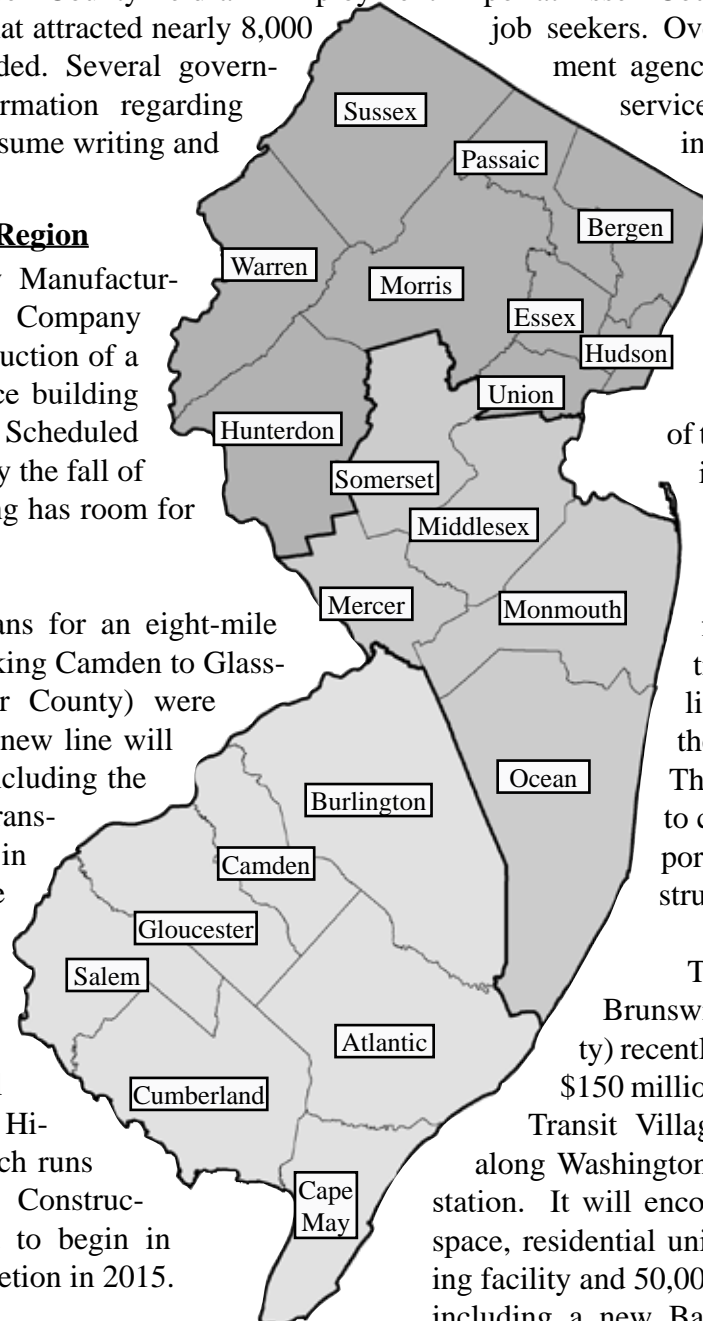
work-interviewing tips, were provided by trained professionals free of charge.

Southern Region

New Jersey Manufacturers Insurance Company has begun construction of a \$48 million office building in Hammonton. Scheduled for completion by the fall of 2010, the building has room for 330 employees.

In May, plans for an eight-mile light rail line linking Camden to Glassboro (Gloucester County) were announced. The new line will have 15 stops, including the Walter Rand Transportation Center in Camden where passengers will be able to board the River Line, which runs to Trenton, as well as the PATCO Hi-Speed Line, which runs to Philadelphia. Construction is expected to begin in 2011 with completion in 2015.

In May, the Rutgers University Institute of Marine and Coastal Sciences and the Jacques Cousteau National Estuarine Research Reserve opened offices in Bridgeton (Cumberland County).



Central Region

In May, demolition of the Mercer County jail in Trenton was completed. The County plans to use federally subsidized bonds to finance the construction of a new \$76 million criminal court at the site later this year. The project is expected to create 350 to 400 temporary jobs during construction.

The City of New Brunswick (Middlesex County) recently launched plans for a \$150 million mixed-use Gateway Transit Village to be constructed along Washington Street near the train station. It will encompass Class A office space, residential units, a 657-space parking facility and 50,000-sq.ft. of retail space, including a new Barnes & Noble bookstore. The parking structure, retail and office space are expected to open within two years, while the residential segment should be completed within 30 months.

Labor Area Focus (cont.)

Labor Area Nonfarm Payroll Employment

(not seasonally adjusted)

	2008						2009						
	May	Jun	Jul	Aug	Sep	Oct	Nov	Dec	Jan	Feb	Mar	Apr	May
Atlantic City Labor Area (Atlantic County)													
Total Nonfarm	149.6	152.9	152.1	150.6	149.8	147.5	146.4	144.7	141.9	139.7	140.3	139.6	142.0
Total Private Sector	126.8	130.3	130.5	129.0	127.6	125.0	123.8	122.8	119.8	117.5	118.0	118.1	119.8
Government	22.8	22.6	21.6	21.6	22.2	22.5	22.6	21.9	22.1	22.2	22.3	21.5	22.2
Bergen-Passaic Labor Area (Bergen & Passaic counties)													
Total Nonfarm	662.3	667.1	655.7	651.2	655.8	660.2	659.7	656.5	639.5	633.5	635.6	639.1	640.9
Total Private Sector	579.9	584.0	577.5	575.6	575.3	574.6	572.8	569.5	556.4	548.2	550.0	552.9	557.3
Government	82.4	83.1	78.2	75.6	80.5	85.6	86.9	87.0	83.1	85.3	85.6	86.2	83.6
Camden Labor Area (Burlington, Camden & Gloucester counties)													
Total Nonfarm	542.2	546.0	533.5	530.9	532.8	537.4	534.5	530.0	515.6	511.5	514.7	517.2	523.2
Total Private Sector	453.4	457.3	452.4	450.7	447.5	447.1	443.8	439.3	426.0	422.0	424.5	427.1	434.0
Government	88.8	88.7	81.1	80.2	85.3	90.3	90.7	90.7	89.6	89.5	90.2	90.1	89.2
Edison Labor Area (Middlesex, Monmouth, Ocean & Somerset counties)													
Total Nonfarm	1,048.1	1,061.5	1,047.1	1,040.9	1,029.2	1,034.6	1,030.2	1,020.6	979.4	979.7	985.1	990.8	1,001.9
Total Private Sector	893.3	905.8	904.6	901.0	885.4	884.0	878.6	869.8	832.1	830.1	834.7	840.3	850.8
Government	154.8	155.7	142.5	139.9	143.8	150.6	151.6	150.8	147.3	149.6	150.4	150.5	151.1
Jersey City Labor Area (Hudson County)													
Total Nonfarm	248.2	248.6	242.9	241.6	246.2	247.9	247.0	246.9	242.2	241.3	242.0	241.7	241.2
Total Private Sector	206.6	207.5	203.8	203.8	206.0	204.9	203.6	203.1	200.0	198.1	198.9	198.8	199.4
Government	41.6	41.1	39.1	37.8	40.2	43.0	43.4	43.8	42.2	43.2	43.1	42.9	41.8
Newark Labor Area (Essex, Hunterdon, Morris, Sussex & Union counties)													
Total Nonfarm	1,041.7	1,048.3	1,032.9	1,027.4	1,026.5	1,033.8	1,034.1	1,032.3	1,006.2	1,007.6	1,006.1	1,014.6	1,021.7
Total Private Sector	873.7	880.6	871.1	868.0	863.5	866.3	866.9	865.2	841.4	840.4	839.7	846.0	854.3
Government	168.0	167.7	161.8	159.4	163.0	167.5	167.2	167.1	164.8	167.2	166.4	168.6	167.4
Ocean City Labor Area (Cape May County)													
Total Nonfarm	43.9	52.4	56.0	55.2	48.4	39.9	38.4	37.8	33.0	32.9	33.5	36.5	42.2
Total Private Sector	34.3	41.9	46.8	45.9	38.3	30.7	29.4	28.9	23.8	23.7	24.3	27.2	32.4
Government	9.6	10.5	9.2	9.3	10.1	9.2	9.0	8.9	9.2	9.2	9.2	9.3	9.8
Salem Labor Area (Salem County)													
Total Nonfarm	23.2	23.2	21.7	21.7	22.6	23.0	22.4	22.5	22.1	22.2	22.4	22.9	23.0
Total Private Sector	18.1	18.2	18.2	18.2	17.9	18.1	17.5	17.6	17.3	17.4	17.5	17.9	18.1
Government	5.1	5.0	3.5	3.5	4.7	4.9	4.9	4.9	4.8	4.8	4.9	4.9	4.9
Trenton-Ewing Labor Area (Mercer County)													
Total Nonfarm	246.4	247.0	241.0	238.6	238.8	240.6	240.1	240.0	235.1	235.5	236.3	237.9	239.3
Total Private Sector	175.7	176.9	175.5	174.5	174.2	175.5	174.9	174.8	170.1	170.5	170.8	172.4	173.7
Government	70.7	70.1	65.5	64.1	64.6	65.1	65.2	65.2	65.0	65.0	65.5	65.5	65.6
Vineland-Millville-Bridgeton Labor Area (Cumberland County)													
Total Nonfarm	62.5	63.0	60.0	60.0	61.7	62.5	62.2	62.2	60.8	60.7	61.0	61.3	61.7
Total Private Sector	47.2	47.8	46.9	46.9	47.1	47.1	46.7	46.7	45.5	45.1	45.3	45.4	45.6
Government	15.3	15.2	13.1	13.1	14.6	15.4	15.5	15.5	15.3	15.6	15.7	15.9	16.1
Warren Labor Area (Warren County)													
Total Nonfarm	39.6	40.0	37.2	36.9	38.7	38.4	39.1	38.6	37.4	37.6	37.9	38.2	38.4
Total Private Sector	32.9	33.0	32.6	32.4	32.4	33.3	34.0	33.3	31.5	31.4	31.7	31.9	32.1
Government	5.9	6.2	3.8	3.7	5.5	5.6	5.6	5.8	5.9	6.2	6.2	6.3	6.3

Estimates for the Ocean City, Salem and Warren Labor Areas are independently estimated by the New Jersey Department of Labor and Workforce Development.

Labor Area Focus (cont.)

Labor Area Civilian Labor Force

(seasonally adjusted)

	2008							2009					
	May	Jun	Jul	Aug	Sep	Oct	Nov	Dec	Jan	Feb	Mar	Apr	May
Atlantic City Labor Area (Atlantic County)													
Labor Force	135.3	135.5	134.9	135.3	135.6	136.1	136.6	136.6	136.6	135.8	137.0	137.3	137.6
Employment	126.6	126.7	125.9	125.3	125.3	124.9	124.7	124.0	124.2	121.8	122.3	121.7	121.3
Unemployment Volume	8.7	8.8	9.0	10.0	10.2	11.1	11.9	12.6	12.4	14.0	14.7	15.6	16.3
Unemployment Rate (%)	6.5	6.5	6.7	7.4	7.6	8.2	8.7	9.2	9.1	10.3	10.7	11.4	11.8
Bergen-Passaic Labor Area (Bergen & Passaic Counties)													
Labor Force	717.8	717.1	718.2	719.0	718.2	718.1	715.6	718.1	721.3	722.7	728.2	733.6	732.0
Employment	682.0	681.1	681.2	679.8	678.6	676.5	673.0	669.6	670.3	664.4	668.6	672.8	668.5
Unemployment Volume	35.8	36.0	37.0	39.3	39.6	41.6	42.6	48.6	51.0	58.3	559.6	60.8	63.5
Unemployment Rate (%)	5.0	5.0	5.2	5.5	5.5	5.8	6.0	6.8	7.1	8.1	8.2	8.3	8.7
Camden Labor Area (Burlington, Camden & Gloucester Counties)													
Labor Force	661.6	660.5	660.0	661.8	662.3	663.8	661.0	662.0	659.2	657.6	663.8	668.9	671.3
Employment	627.1	626.0	624.5	623.3	622.7	621.1	616.8	613.4	611.4	604.2	607.7	610.2	610.0
Unemployment Volume	34.5	34.5	35.5	38.6	39.5	42.8	44.2	48.7	47.8	53.4	56.1	58.7	61.3
Unemployment Rate (%)	5.2	5.2	5.4	5.8	6.0	6.4	6.7	7.3	7.3	8.1	8.5	8.8	9.1
Edison Labor Area (Middlesex, Monmouth, Somerset & Ocean Counties)													
Labor Force	1,203.3	1,201.3	1,200.8	1,201.2	1,199.1	1,200.0	1,195.3	1,202.1	1,192.7	1,198.9	1,204.8	1,210.4	1,208.7
Employment	1,145.6	1,143.2	1,141.3	1,137.9	1,134.9	1,133.6	1,127.0	1,122.3	1,109.3	1,104.5	1,108.9	1,113.2	1,107.9
Unemployment Volume	57.7	58.1	59.5	63.3	64.2	66.4	68.2	79.8	83.4	94.4	95.9	97.2	100.8
Unemployment Rate (%)	4.8	4.8	5.0	5.3	5.4	5.5	5.7	6.6	7.0	7.9	8.0	8.0	8.3
Jersey City Labor Area (Hudson County)													
Labor Force	294.4	294.4	294.9	295.7	295.4	295.9	295.3	296.3	296.3	297.3	299.9	302.9	302.3
Employment	276.7	276.4	276.5	275.8	275.3	274.3	273.1	271.4	272.3	269.6	271.3	273.1	271.3
Unemployment Volume	17.7	17.9	18.4	19.9	20.2	21.5	22.2	24.9	24.0	27.7	28.6	29.8	31.0
Unemployment Rate (%)	6.0	6.1	6.3	6.7	6.8	7.3	7.5	8.4	8.1	9.3	9.5	9.8	10.3
Newark-Union Labor Area (Essex, Hunterdon, Morris, Sussex & Union Counties)													
Labor Force	1,069.6	1,069.0	1,070.4	1,072.2	1,070.7	1,071.2	1,069.2	1,073.3	1,073.0	1,078.5	1,083.0	1,092.3	1,092.0
Employment	1,015.5	1,014.1	1,013.7	1,012.0	1,009.4	1,006.4	1,002.6	999.5	996.7	992.5	995.6	1,004.3	999.3
Unemployment Volume	54.2	55.0	56.7	60.3	61.3	64.9	66.7	73.8	76.3	86.0	87.4	88.0	92.7
Unemployment Rate (%)	5.1	5.1	5.3	5.6	5.7	6.1	6.2	6.9	7.1	8.0	8.1	8.1	8.5
Ocean City Labor Area (Cape May County)													
Labor Force	57.6	56.9	56.8	57.4	58.1	58.9	59.5	59.8	56.8	56.8	57.0	56.5	57.7
Employment	53.3	52.6	52.4	52.5	53.0	53.4	54.0	54.2	51.5	51.0	51.1	50.4	51.4
Unemployment Volume	4.3	4.4	4.4	4.9	5.1	5.5	5.5	5.6	5.3	5.8	5.9	6.1	6.3
Unemployment Rate (%)	7.4	7.7	7.8	8.5	8.7	9.3	9.2	9.3	9.3	10.2	10.4	10.8	10.9
Salem Labor Area (Salem County)													
Labor Force	31.6	31.6	31.7	31.8	31.6	31.8	31.5	31.6	31.8	31.8	31.9	32.0	32.4
Employment	29.7	29.8	29.7	29.6	29.6	29.4	29.1	29.1	29.1	28.8	28.7	28.9	28.7
Unemployment Volume	1.9	1.8	2.0	2.2	2.0	2.4	2.4	2.6	2.7	3.0	3.2	3.1	3.7
Unemployment Rate (%)	5.9	5.7	6.4	6.8	6.4	7.5	7.7	8.1	8.5	9.4	10.0	9.7	11.4
Trenton-Ewing Labor Area (Mercer County)													
Labor Force	201.6	201.0	200.2	199.8	199.9	199.8	199.5	201.3	199.8	200.6	202.3	203.8	203.1
Employment	192.1	191.6	190.5	189.6	189.6	189.0	188.5	188.4	187.3	186.4	187.6	188.6	187.4
Unemployment Volume	9.6	9.4	9.7	10.2	10.3	10.8	11.0	13.0	12.5	14.2	14.7	15.2	15.7
Unemployment Rate (%)	4.7	4.7	4.8	5.1	5.2	5.4	5.5	6.5	6.3	7.1	7.3	7.5	7.7
Vineland-Millville-Bridgeton Labor Area (Cumberland County)													
Labor Force	68.7	69.2	69.1	69.3	70.0	70.2	70.1	70.3	69.7	70.1	70.3	71.2	71.6
Employment	63.6	64.0	63.7	63.4	63.9	63.5	63.3	63.1	62.8	62.4	62.5	62.8	62.7
Unemployment Volume	5.1	5.2	5.4	5.9	6.1	6.7	6.8	7.2	6.9	7.74	7.8	8.4	8.9
Unemployment Rate (%)	7.4	7.5	7.8	8.5	8.7	9.5	9.7	10.2	9.9	11.0	11.1	11.8	12.4

NEW JERSEY
ECONOMIC INDICATORS

NEW JERSEY
ECONOMIC INDICATORS

NEW
ECO

**Statistical Section
and
Notes**

INDICATORS

INDICATORS

NEW JERSEY
ECONOMIC INDICATORS

NEW JERSEY
ECONOMIC INDICATORS

NEW JERSEY
ECONOMIC INDICATORS

NEW JERSEY
ECONOMIC INDICATORS

NEW JERSEY
ECONOMIC INDICATORS

1. Civilian Labor Force (000)

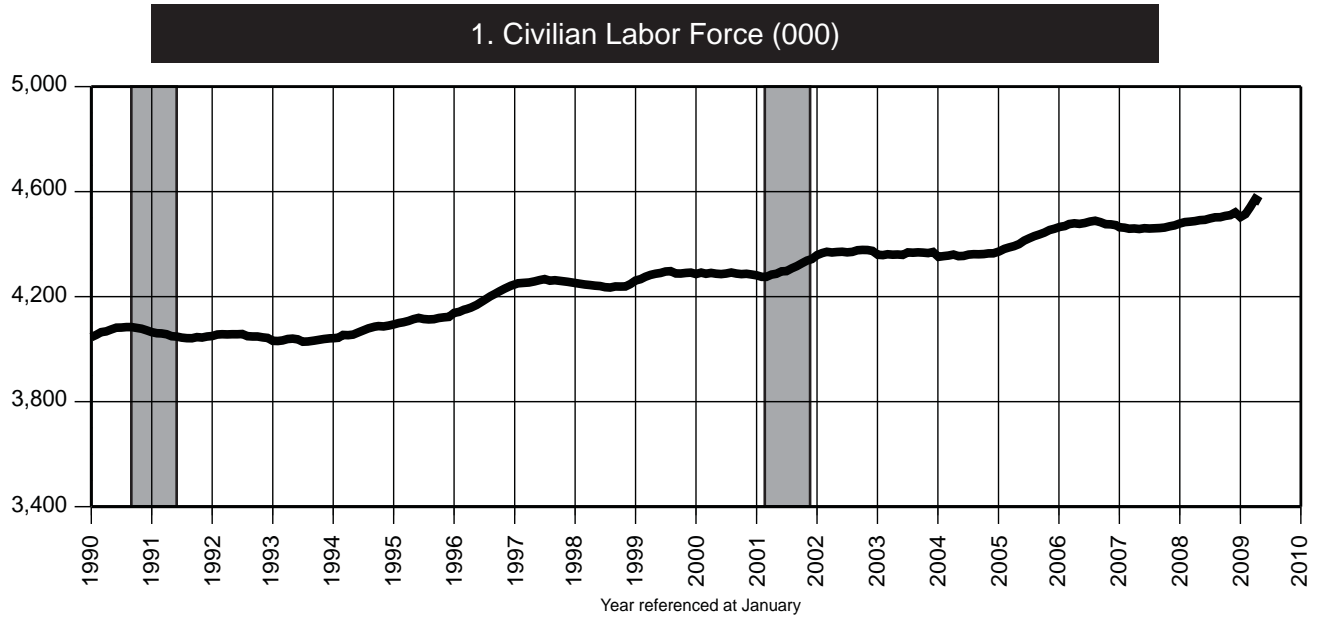
Date	2006		2007		2008		2009	
	Unadj.	Adj.	Unadj.	Adj.	Unadj.	Adj.	Unadj.	Adj.
Jan	4,430.6	4,465.6	4,444.3	4,464.4	4,466.3	4,478.7	4,476.1	4,503.0
Feb	4,453.5	4,469.0	4,445.0	4,462.6	4,467.1	4,483.9	4,494.3	4,514.6
Mar	4,459.3	4,476.4	4,449.8	4,458.7	4,479.7	4,485.5	4,528.0	4,540.6
Apr	4,455.4	4,479.3	4,430.2	4,459.6	4,470.3	4,487.7	4,545.5R	4,572.4R
May	4,463.0	4,477.2	4,436.2	4,457.6	4,481.9	4,491.3	4,547.8	4,560.9
Jun	4,520.9	4,480.5	4,498.0	4,460.6	4,536.8	4,492.6		
Jul	4,547.7	4,485.9	4,524.0	4,459.4	4,562.9	4,497.8		
Aug	4,516.3	4,489.1	4,475.5	4,460.3	4,527.7	4,502.1		
Sep	4,451.3	4,483.6	4,441.4	4,461.2	4,473.5	4,502.5		
Oct	4,470.3	4,476.0	4,450.1	4,463.1	4,495.1	4,507.4		
Nov	4,479.8	4,475.3	4,476.5	4,467.9	4,493.9	4,510.4		
Dec	4,481.8	4,472.1	4,476.0	4,471.5	4,505.6	4,520.8		

2. Resident Employment (000)

Date	2006		2007		2008		2009	
	Unadj.	Adj.	Unadj.	Adj.	Unadj.	Adj.	Unadj.	Adj.
Jan	4,205.4	4,252.3	4,231.9	4,277.0	4,234.9	4,272.3	4,121.1	4,172.5
Feb	4,219.3	4,257.5	4,238.9	4,274.1	4,238.7	4,272.1	4,100.7	4,144.6
Mar	4,238.2	4,265.9	4,255.7	4,269.4	4,253.2	4,268.9	4,137.2	4,163.8
Apr	4,244.5	4,265.0	4,251.4	4,269.6	4,268.4	4,265.5	4,170.6R	4,188.0R
May	4,254.6	4,265.5	4,258.5	4,271.4	4,258.9	4,261.2	4,154.1	4,160.3
Jun	4,305.6	4,269.1	4,308.2	4,274.2	4,302.0	4,256.9		
Jul	4,306.6	4,273.6	4,307.6	4,270.1	4,296.2	4,252.6		
Aug	4,306.9	4,276.2	4,292.4	4,270.8	4,275.0	4,247.3		
Sep	4,254.5	4,274.6	4,258.8	4,269.7	4,224.1	4,241.9		
Oct	4,294.7	4,276.5	4,276.0	4,270.8	4,240.5	4,235.6		
Nov	4,297.8	4,278.4	4,296.5	4,270.9	4,223.4	4,224.9		
Dec	4,307.6	4,281.1	4,283.7	4,271.7	4,199.0	4,215.1		

3. Unemployment (000)

Date	2006		2007		2008		2009	
	Unadj.	Adj.	Unadj.	Adj.	Unadj.	Adj.	Unadj.	Adj.
Jan	225.2	213.3	212.4	187.4	231.4	206.4	355.0	330.5
Feb	234.2	211.5	206.0	188.5	228.4	211.8	393.6	370.0
Mar	221.1	210.4	194.1	189.3	226.5	216.6	390.8	376.8
Apr	210.9	214.3	178.8	189.9	201.9	222.2	374.9R	383.6R
May	208.4	211.6	177.8	186.2	223.0	230.1	393.7	400.6
Jun	215.3	211.4	189.7	186.5	234.8	235.7		
Jul	241.1	212.3	216.4	189.3	266.7	245.2		
Aug	209.4	212.8	183.1	189.5	252.6	254.8		
Sep	196.8	209.0	182.6	191.5	249.4	260.6		
Oct	175.6	199.5	174.1	192.2	254.5	271.8		
Nov	182.0	197.0	180.0	197.0	270.5	285.5		
Dec	174.2	191.0	192.2	199.8	306.6	305.7		



4. Labor Force Participation Rate (%)

Date	2006		2007		2008		2009	
	Unadj.	Adj.	Unadj.	Adj.	Unadj.	Adj.	Unadj.	Adj.
Jan	66.3	66.9	66.3	66.6	66.3	66.5	66.0	66.4
Feb	66.7	66.9	66.3	66.5	66.3	66.5	66.2	66.5
Mar	66.7	67.0	66.3	66.5	66.4	66.5	66.7	66.9
Apr	66.7	67.0	66.0	66.4	66.3	66.5	66.9	67.3
May	66.8	67.0	66.1	66.4	66.4	66.6	66.9	67.1
Jun	67.6	67.0	67.0	66.4	67.2	66.5		
Jul	68.0	67.1	67.3	66.4	67.6	66.6		
Aug	67.5	67.1	66.6	66.3	67.0	66.6		
Sep	66.5	67.0	66.0	66.3	66.1	66.6		
Oct	66.7	66.8	66.1	66.3	66.4	66.6		
Nov	66.9	66.8	66.5	66.4	66.3	66.6		
Dec	66.9	66.7	66.4	66.4	66.5	66.7		

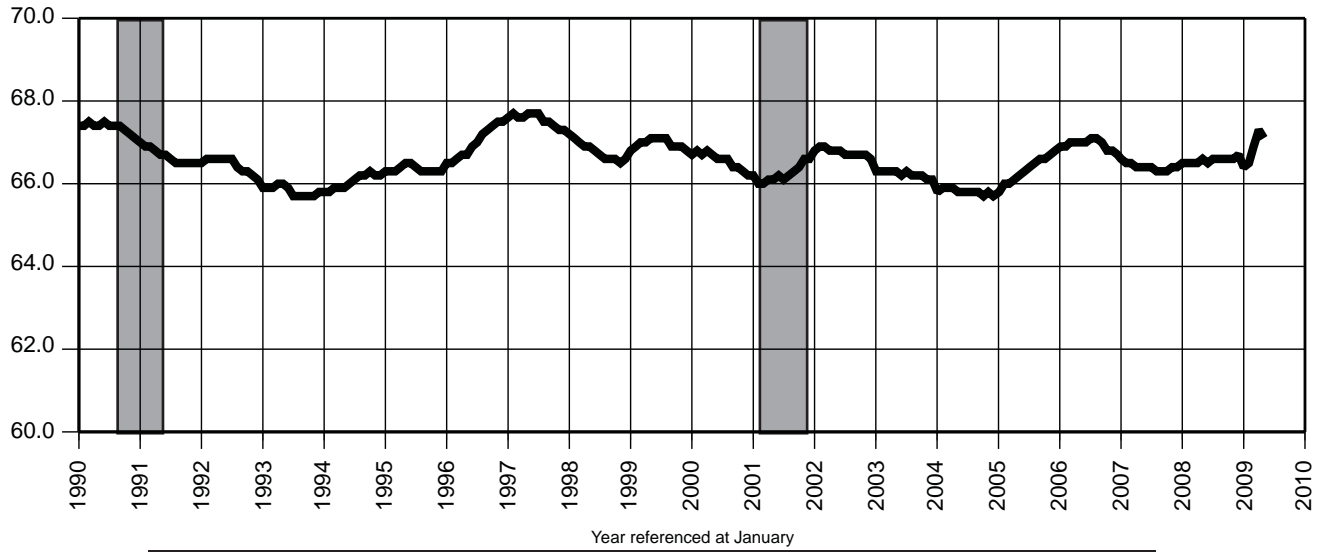
5. Employment / Population Ratio (%)

Date	2006		2007		2008		2009	
	Unadj.	Adj.	Unadj.	Adj.	Unadj.	Adj.	Unadj.	Adj.
Jan	63.0	63.7	63.1	63.8	62.8	63.4	60.8	61.5
Feb	63.2	63.7	63.2	63.7	62.9	63.4	60.4	61.1
Mar	63.4	63.8	63.4	63.6	63.1	63.3	60.9	61.3
Apr	63.5	63.8	63.3	63.6	63.3	63.2	61.4	61.7
May	63.7	63.8	63.4	63.6	63.1	63.1	61.1	61.2
Jun	64.4	63.9	64.1	63.6	63.7	63.1		
Jul	64.4	63.9	64.1	63.6	63.6	63.0		
Aug	64.4	63.9	63.9	63.5	63.2	62.8		
Sep	63.5	63.8	63.3	63.5	62.4	62.7		
Oct	64.1	63.8	63.5	63.5	62.6	62.6		
Nov	64.1	63.8	63.8	63.4	62.3	62.4		
Dec	64.3	63.9	63.6	63.4	61.9	62.2		

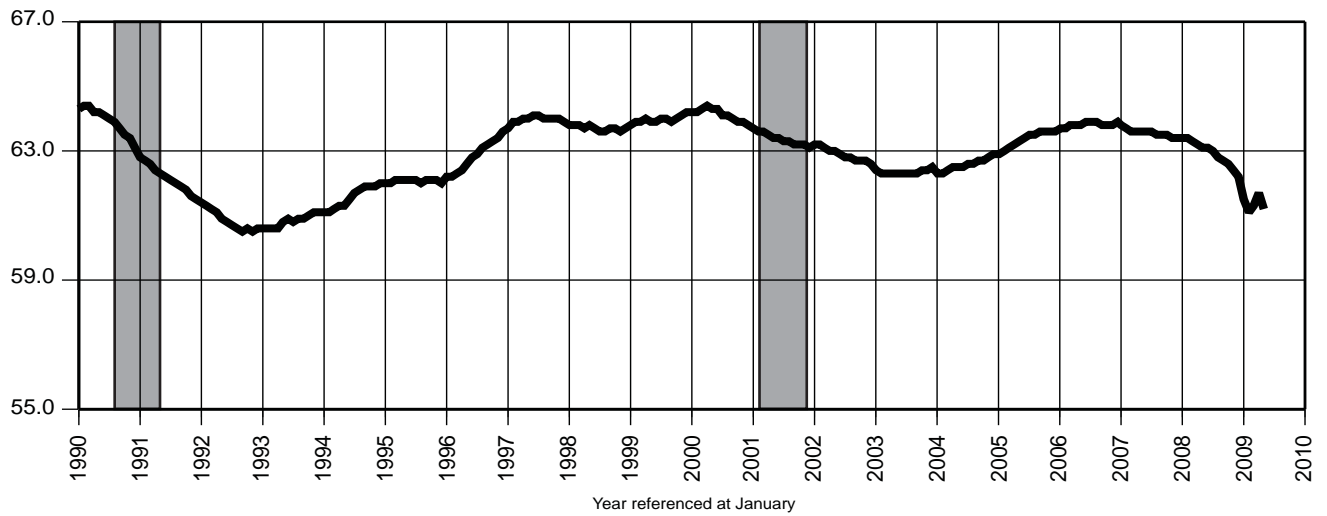
6. Unemployment Rate (%)

Date	2006		2007		2008		2009	
	Unadj.	Adj.	Unadj.	Adj.	Unadj.	Adj.	Unadj.	Adj.
Jan	5.1	4.8	4.8	4.2	5.2	4.6	7.9	7.3
Feb	5.3	4.7	4.6	4.2	5.1	4.7	8.8	8.2
Mar	5.0	4.7	4.4	4.2	5.1	4.8	8.6	8.3
Apr	4.7	4.8	4.0	4.3	4.5	5.0	8.2	8.4
May	4.7	4.7	4.0	4.2	5.0	5.1	8.7	8.8
Jun	4.8	4.7	4.2	4.2	5.2	5.2		
Jul	5.3	4.7	4.8	4.2	5.8	5.5		
Aug	4.6	4.7	4.1	4.2	5.6	5.7		
Sep	4.4	4.7	4.1	4.3	5.6	5.8		
Oct	3.9	4.5	3.9	4.3	5.7	6.0		
Nov	4.1	4.4	4.0	4.4	6.0	6.3		
Dec	3.9	4.3	4.3	4.5	6.8	6.8		

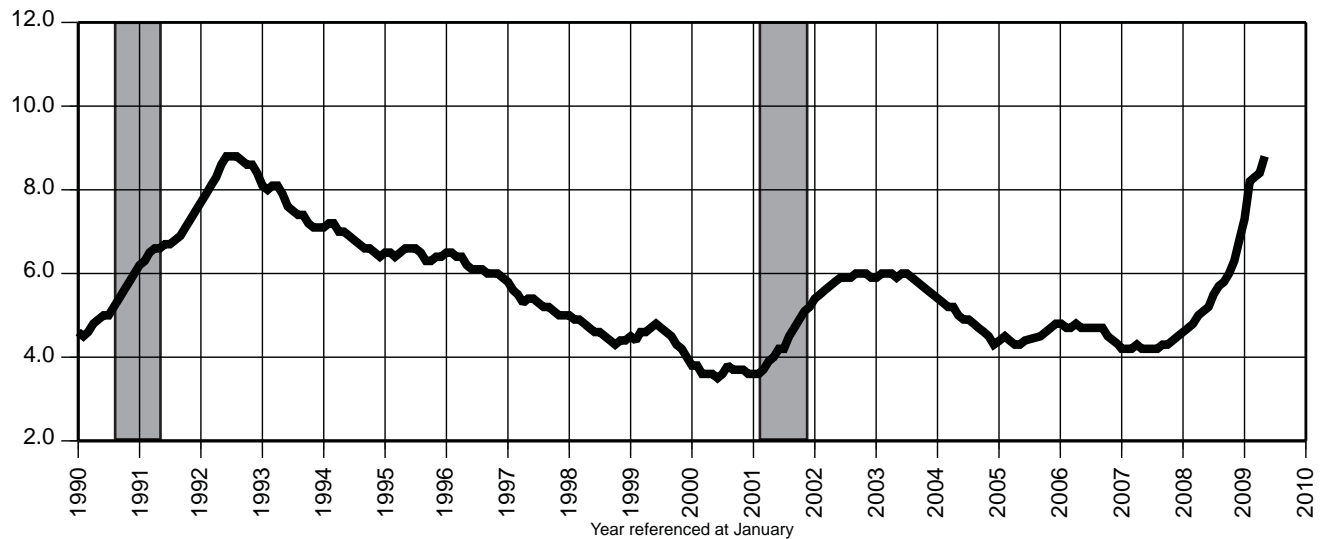
4. Labor Force Participation Rate (%)



5. Employment / Population Ratio (%)



6. Unemployment Rate (%)



7. Nonfarm Payroll Employment (000)

Date	2006		2007		2008		2009	
	Unadj.	Adj.	Unadj.	Adj.	Unadj.	Adj.	Unadj.	Adj.
Jan	3,984.6	4,059.9	3,997.0	4,071.6	4,016.3	4,091.0	3,916.5	3,987.8
Feb	3,992.5	4,065.8	3,993.2	4,065.7	4,017.0	4,089.8	3,899.0	3,973.3
Mar	4,028.4	4,072.5	4,024.6	4,068.2	4,042.7	4,086.4	3,913.1	3,960.0
Apr	4,050.8	4,065.6	4,053.9	4,068.6	4,064.9	4,080.1	3,925.6R	3,941.3R
May	4,090.9	4,068.7	4,103.9	4,081.0	4,093.8	4,070.2	3,953.8	3,935.1
Jun	4,143.4	4,072.5	4,159.6	4,086.5	4,140.3	4,066.2		
Jul	4,091.5	4,069.2	4,101.8	4,078.8	4,081.3	4,058.3		
Aug	4,076.5	4,074.8	4,086.0	4,084.5	4,052.3	4,051.1		
Sep	4,075.3	4,075.1	4,076.5	4,078.9	4,042.9	4,046.6		
Oct	4,088.1	4,074.2	4,103.4	4,090.5	4,059.4	4,037.4		
Nov	4,107.4	4,075.3	4,118.8	4,087.4	4,052.3	4,014.6		
Dec	4,122.3	4,079.6	4,128.4	4,086.2	4,036.2	4,000.5		

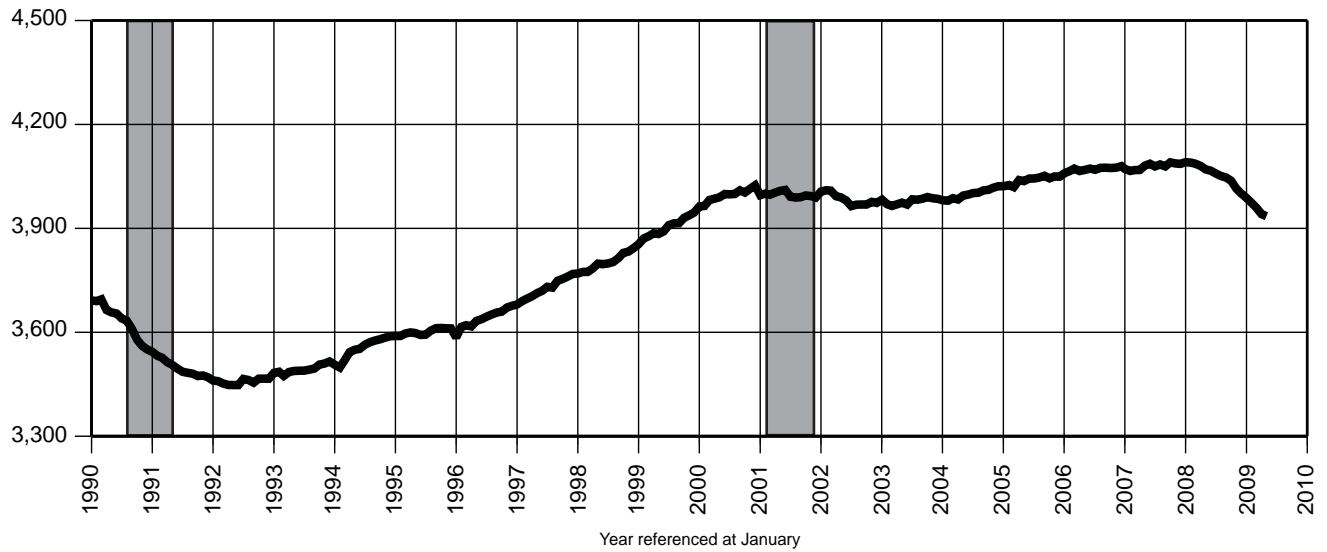
8. Private Sector Payroll Employment (000)

Date	2006		2007		2008		2009	
	Unadj.	Adj.	Unadj.	Adj.	Unadj.	Adj.	Unadj.	Adj.
Jan	3,340.7	3,413.6	3,351.8	3,424.0	3,368.9	3,441.2	3,265.8	3,335.8
Feb	3,336.1	3,418.2	3,336.6	3,418.0	3,358.3	3,440.0	3,239.6	3,322.8
Mar	3,370.0	3,425.4	3,364.8	3,419.7	3,381.6	3,436.7	3,251.4	3,309.1
Apr	3,392.0	3,418.0	3,394.6	3,420.4	3,404.2	3,430.4	3,261.9R	3,289.2R
May	3,435.5	3,421.5	3,446.0	3,431.5	3,434.8	3,419.8	3,292.1	3,282.6
Jun	3,486.1	3,425.3	3,499.1	3,436.7	3,478.1	3,414.9		
Jul	3,469.4	3,422.3	3,485.3	3,437.7	3,453.8	3,406.5		
Aug	3,465.5	3,426.7	3,476.3	3,437.5	3,440.1	3,401.4		
Sep	3,445.1	3,429.3	3,446.7	3,432.9	3,409.3	3,396.5		
Oct	3,433.0	3,425.7	3,447.8	3,441.4	3,396.9	3,382.9		
Nov	3,447.6	3,427.4	3,457.9	3,438.4	3,387.2	3,361.5		
Dec	3,462.8	3,431.5	3,467.6	3,436.8	3,372.3	3,348.1		

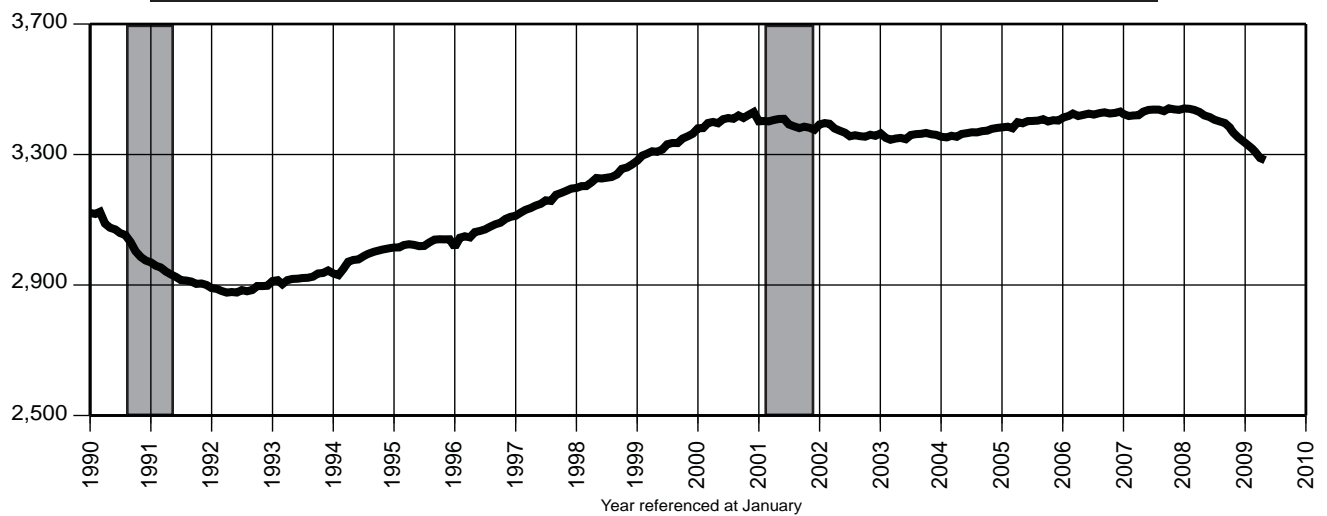
9. Construction Payroll Employment (000)

Date	2006		2007		2008		2009	
	Unadj.	Adj.	Unadj.	Adj.	Unadj.	Adj.	Unadj.	Adj.
Jan	161.5	173.6	161.2	173.1	158.7	170.5	143.5	153.8
Feb	161.2	176.0	155.4	169.9	156.7	170.9	136.9	151.2
Mar	166.5	176.3	160.7	170.6	160.1	169.8	141.2	151.9
Apr	175.4	177.1	169.9	171.6	165.3	167.2	144.0R	146.8R
May	178.8	175.9	175.7	172.8	168.6	165.8	143.9	141.9
Jun	180.9	175.0	179.5	173.5	170.7	164.8		
Jul	181.0	174.4	179.6	173.1	171.0	164.4		
Aug	182.2	174.5	181.0	173.4	170.6	163.1		
Sep	181.1	174.7	179.1	173.0	168.3	162.3		
Oct	178.3	173.5	178.1	173.3	167.1	161.8		
Nov	176.7	173.3	175.5	172.1	162.2	158.7		
Dec	175.2	174.8	171.5	171.2	157.8	156.6		

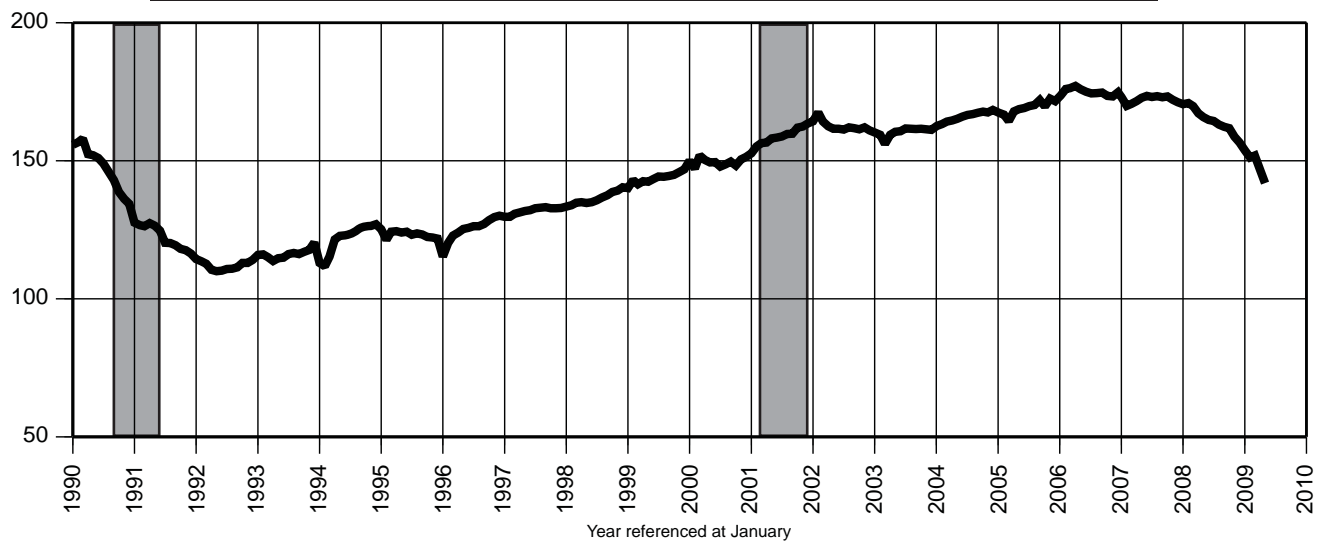
7. Nonfarm Payroll Employment (000)



8. Private Sector Payroll Employment (000)



9. Construction Payroll Employment (000)



You're viewing an archived copy from the New Jersey State Library.
Indicator Series 10-12 Establishment Employment

10. Total Manufacturing Payroll Employment (000)

Date	2006		2007		2008		2009	
	Unadj.	Adj.	Unadj.	Adj.	Unadj.	Adj.	Unadj.	Adj.
Jan	326.4	329.3	314.5	317.0	303.4	305.7	277.6	280.1
Feb	325.9	328.3	313.5	315.8	302.1	304.5	274.7	276.9
Mar	326.6	327.4	313.5	314.4	302.6	303.5	272.3	273.2
Apr	324.7	325.8	312.3	313.3	302.9	303.8	270.7R	271.4R
May	325.3	325.1	312.2	312.0	302.2	301.9	271.4	271.7
Jun	326.5	324.1	313.5	311.3	303.5	301.3		
Jul	323.7	323.6	312.1	311.8	300.3	300.0		
Aug	323.1	322.3	310.9	310.1	299.7	298.8		
Sep	322.5	321.4	309.5	308.6	298.5	297.6		
Oct	321.1	320.6	308.6	308.0	293.4	292.5		
Nov	320.3	319.5	308.0	307.2	291.3	290.1		
Dec	319.1	318.1	306.9	306.2	287.2	286.2		

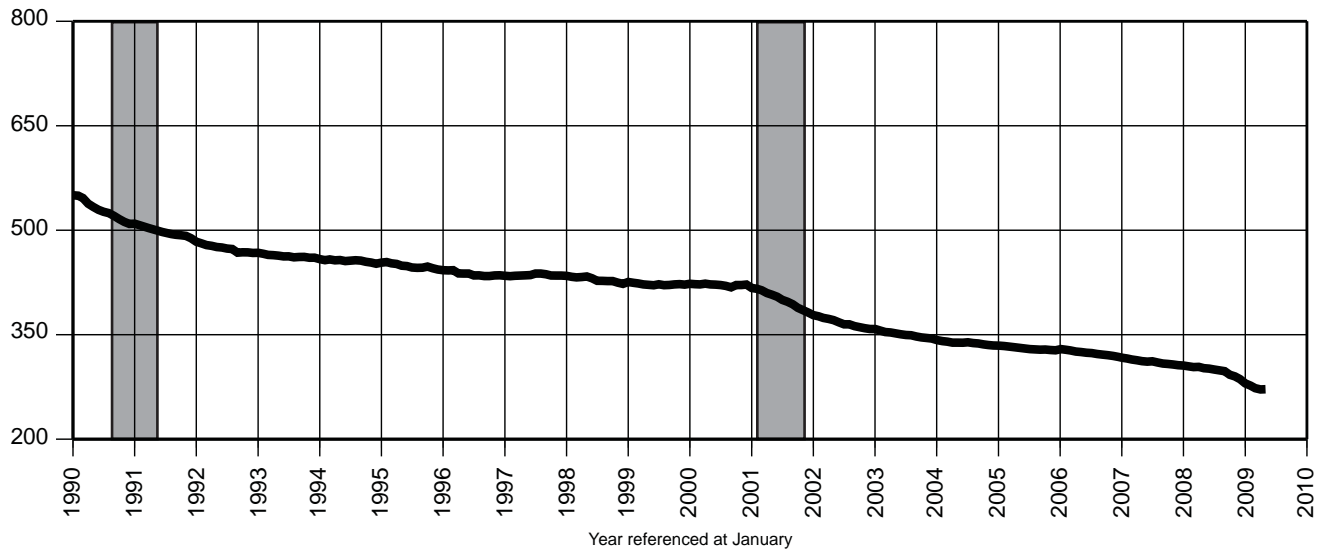
11. Trade, Transportation & Utilities Payroll Employment (000)

Date	2006		2007		2008		2009	
	Unadj.	Adj.	Unadj.	Adj.	Unadj.	Adj.	Unadj.	Adj.
Jan	870.9	875.4	870.2	874.5	870.5	874.5	843.9	851.3
Feb	858.6	874.3	856.7	872.7	856.8	872.8	836.3	853.5
Mar	863.1	875.8	859.5	872.0	859.5	872.1	837.8	851.7
Apr	862.4	874.0	860.2	872.0	857.9	869.8	835.6R	847.7R
May	871.8	874.1	873.0	875.3	865.6	867.9	838.8	841.9
Jun	880.5	873.5	884.4	877.3	874.0	866.8		
Jul	871.5	873.9	873.8	876.1	863.2	865.4		
Aug	868.9	874.2	869.8	875.1	859.4	864.7		
Sep	870.8	874.3	870.7	874.7	859.2	863.3		
Oct	877.4	875.6	875.5	874.0	858.4	855.2		
Nov	894.0	876.3	892.4	874.7	870.4	848.6		
Dec	908.8	876.9	907.2	875.0	872.6	844.0		

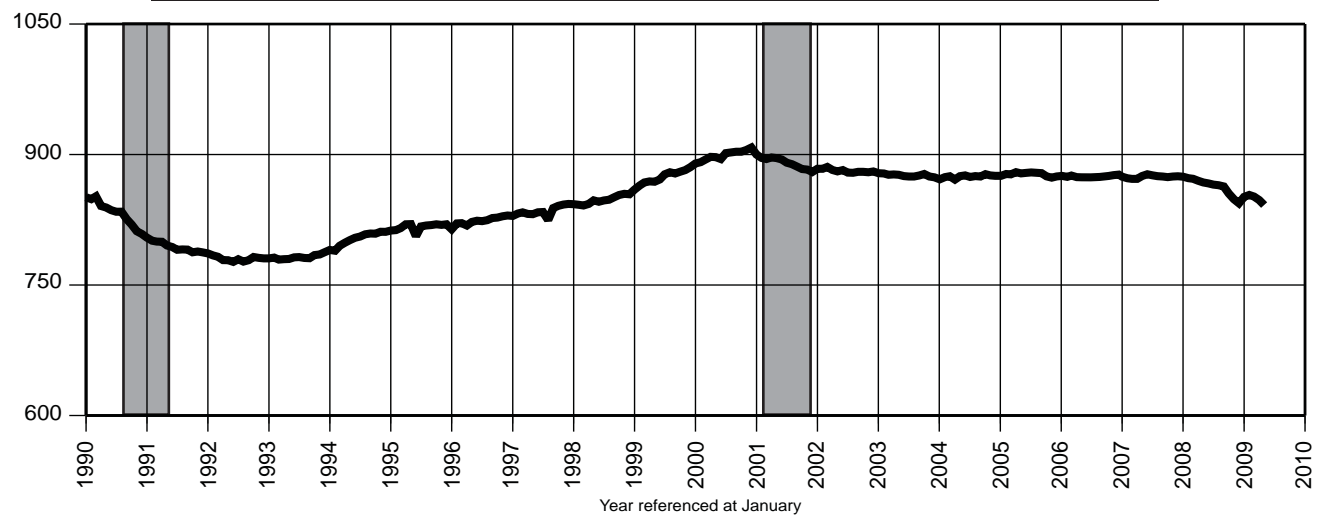
12. Information Payroll Employment (000)

Date	2006		2007		2008		2009	
	Unadj.	Adj.	Unadj.	Adj.	Unadj.	Adj.	Unadj.	Adj.
Jan	97.4	97.9	96.3	96.8	93.7	94.2	90.0	90.4
Feb	98.1	98.2	97.1	97.1	94.2	94.1	89.0	89.8
Mar	98.2	97.8	97.5	97.1	94.2	93.8	88.8	88.9
Apr	97.0	97.5	96.7	97.1	93.1	93.5	89.6R	90.1R
May	97.4	97.6	96.5	96.7	92.7	92.9	88.8	89.0
Jun	98.3	97.7	96.7	96.0	93.4	92.7		
Jul	97.6	97.4	96.5	96.3	92.1	92.0		
Aug	98.0	97.7	97.2	96.9	92.1	91.8		
Sep	97.8	98.3	95.4	95.8	91.2	91.5		
Oct	96.3	96.9	94.0	94.6	90.8	90.7		
Nov	96.1	96.0	94.3	94.3	90.7	90.2		
Dec	96.4	95.8	93.9	93.4	90.7	90.1		

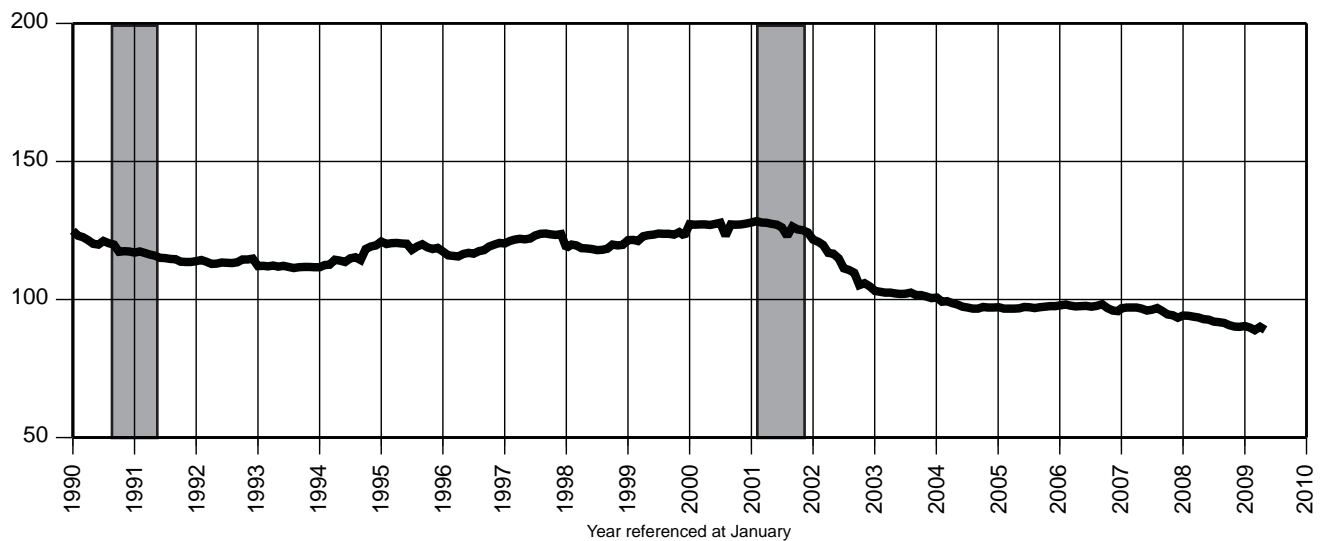
10. Total Manufacturing Payroll Employment (000)



11. Trade, Transportation & Utilities Payroll Employment (000)



12. Information Payroll Employment (000)



You're viewing an archived copy from the New Jersey State Library.
Indicator Series 13-15 Establishment Employment

13. Financial Activities Payroll Employment (000)

Date	2006		2007		2008		2009	
	Unadj.	Adj.	Unadj.	Adj.	Unadj.	Adj.	Unadj.	Adj.
Jan	276.8	279.4	274.9	277.5	272.0	274.5	257.9	259.6
Feb	276.5	279.5	274.3	277.2	271.9	274.6	256.6	258.8
Mar	277.3	279.9	274.3	276.7	272.3	274.6	257.5	259.2
Apr	278.3	279.7	274.8	276.1	271.8	273.1	257.7	259.0
May	279.6	279.7	276.1	276.1	272.5	272.3	258.8	258.9
Jun	281.9	279.3	278.7	276.0	274.2	271.4		
Jul	283.6	279.6	279.9	275.9	272.8	268.8		
Aug	283.0	279.4	279.0	275.5	272.1	268.7		
Sep	279.1	279.2	274.7	274.9	267.7	268.0		
Oct	278.4	279.0	274.0	274.7	264.0	264.4		
Nov	278.1	278.3	274.0	274.4	259.7	260.1		
Dec	278.3	278.3	273.9	273.9	260.8	260.8		

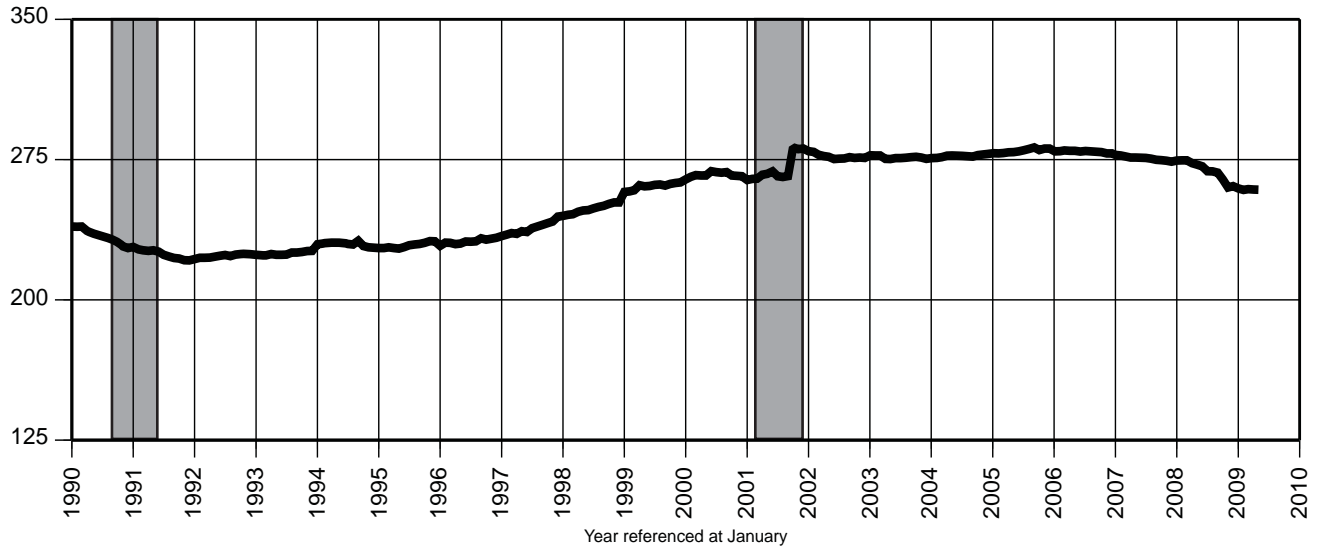
14. Professional & Business Services Payroll Employment (000)

Date	2006		2007		2008		2009	
	Unadj.	Adj.	Unadj.	Adj.	Unadj.	Adj.	Unadj.	Adj.
Jan	577.8	596.7	588.8	607.8	605.5	624.7	574.1	591.5
Feb	583.3	600.9	590.1	607.3	606.8	624.2	566.6	584.4
Mar	592.3	602.5	599.1	609.2	612.7	622.9	570.4	581.1
Apr	598.2	599.8	610.3	612.1	618.7	620.7	575.6R	577.8R
May	603.9	602.8	616.5	615.5	619.4	618.6	578.2	577.2
Jun	613.7	604.8	626.5	617.3	625.5	616.4		
Jul	611.9	604.2	628.0	620.0	624.7	616.8		
Aug	616.0	606.8	630.7	621.1	624.9	615.3		
Sep	613.1	607.6	626.3	621.2	618.4	613.7		
Oct	614.2	608.6	627.6	622.2	613.4	606.3		
Nov	615.6	609.6	628.9	622.8	609.2	603.7		
Dec	615.1	610.7	626.9	622.4	599.9	599.3		

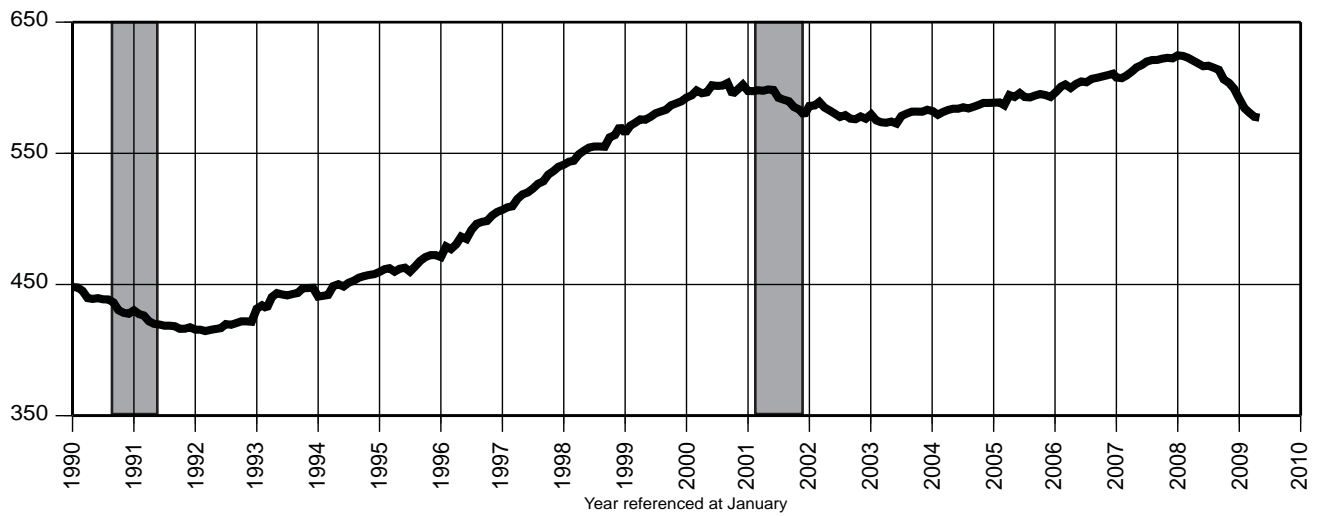
15. Educational & Health Services Payroll Employment (000)

Date	2006		2007		2008		2009	
	Unadj.	Adj.	Unadj.	Adj.	Unadj.	Adj.	Unadj.	Adj.
Jan	560.8	564.4	571.6	575.0	583.7	586.9	595.3	597.9
Feb	563.2	563.9	575.6	576.0	587.7	587.9	598.6	599.1
Mar	567.1	565.2	580.1	577.9	590.5	588.2	600.5	598.3
Apr	566.1	565.2	577.4	576.5	590.9	589.9	601.3	599.2
May	571.1	566.8	583.8	579.5	592.7	588.3	602.2	598.2
Jun	571.3	567.9	582.0	578.5	593.7	590.2		
Jul	563.7	568.1	575.1	579.8	585.2	590.1		
Aug	562.0	570.5	571.4	580.2	582.1	591.0		
Sep	567.3	571.2	577.2	581.3	587.6	591.8		
Oct	572.7	570.6	586.7	584.7	601.5	599.8		
Nov	575.9	572.5	586.1	582.8	603.6	599.9		
Dec	579.1	574.4	589.6	584.8	604.4	600.3		

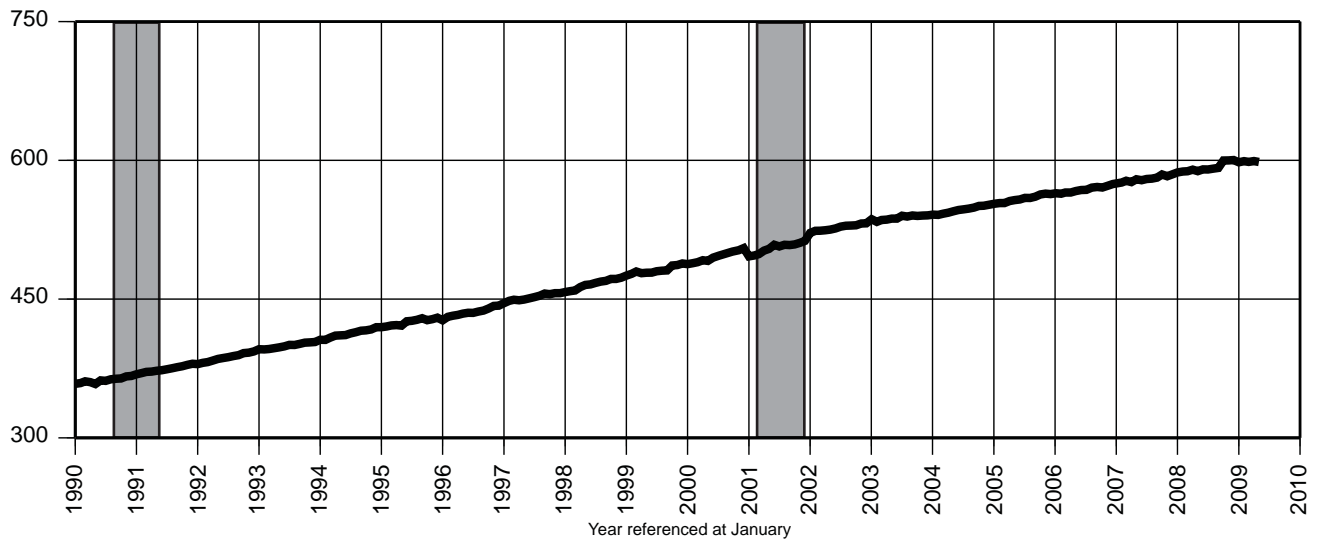
13. Financial Activities Payroll Employment (000)



14. Professional & Business Services Payroll Employment (000)



15. Educational & Health Services Payroll Employment (000)



Indicator Series 16-18 Leisure & Hospitality, CPI and Confidence Index

16. Leisure & Hospitality Payroll Employment (000)

Date	2006		2007		2008		2009	
	Unadj.	Adj.	Unadj.	Adj.	Unadj.	Adj.	Unadj.	Adj.
Jan	310.7	336.3	313.2	338.9	317.3	343.8	321.5	346.0
Feb	310.8	336.4	312.8	338.6	317.9	344.5	318.1	343.4
Mar	319.0	339.0	318.2	338.1	325.0	345.2	320.2	340.1
Apr	327.5	337.0	328.0	337.3	336.5	345.8	323.2R	332.8R
May	343.7	337.3	345.6	338.8	352.4	345.2	343.0	338.0
Jun	366.5	340.0	367.9	340.7	371.8	343.9		
Jul	371.5	339.2	371.9	339.3	374.1	341.6		
Aug	368.7	339.4	369.2	339.7	369.8	340.2		
Sep	352.7	340.4	349.7	337.7	352.3	340.5		
Oct	333.2	338.6	337.9	343.6	340.9	344.3		
Nov	329.2	339.0	333.4	343.7	337.0	346.0		
Dec	328.1	339.1	332.1	343.6	335.1	345.7		

17. Consumer Price Index - (CPI-U) (1982-84 = 100)

Date	2007			2008			2009		
	US	NY	PA	US	NY	PA	US	NY	PA
Jan	202.416	221.767	*	211.080	229.869	*	211.143	233.402	*
Feb	203.499	223.066	213.152	211.693	231.020	220.935	212.193	234.663	220.262
Mar	205.352	224.551	*	213.528	233.122	*	212.709	235.067	*
Apr	206.686	225.780	215.270	214.823	233.822	223.622	213.240	235.582	221.686
May	207.949	227.146	*	216.632	236.151	*	213.856	235.975	*
Jun	208.352	228.258	217.255	218.815	238.580	228.408			
Jul	208.299	228.628	*	219.964	240.273	*			
Aug	207.917	228.326	218.692	219.086	240.550	228.337			
Sep	208.490	228.308	*	218.783	240.089	*			
Oct	208.936	228.552	218.929	216.573	238.403	225.113			
Nov	210.177	229.504	*	212.425	234.498	*			
Dec	210.036	229.395	219.025	210.228	233.012	218.186			

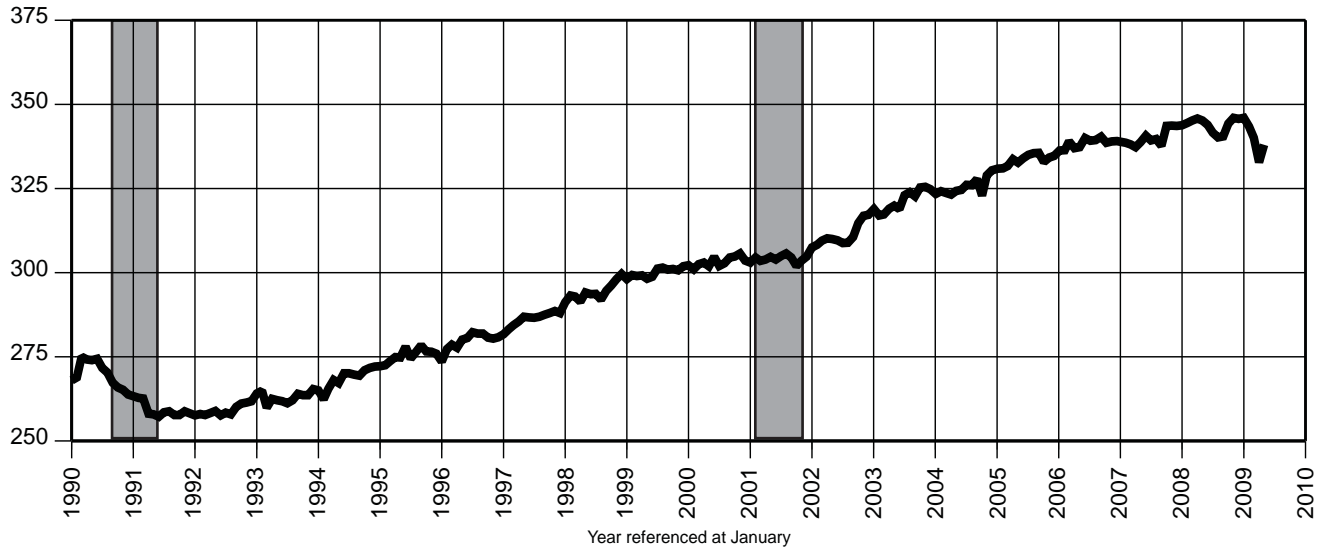
18. Consumer Confidence Index, Middle Atlantic Region

(Seasonally unadjusted)

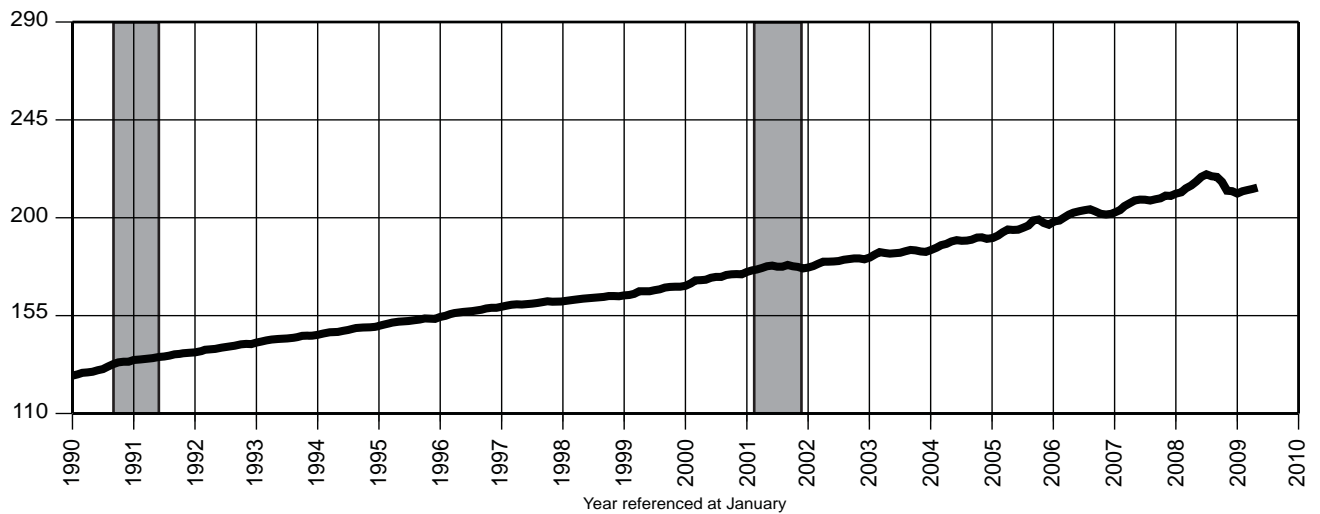
Date	2006	2007	2008	2009
Jan	82.5	91.4	72.2	34.2
Feb	83.4	94.1	59.6	24.8
Mar	95.0	92.3	51.9	24.5
Apr	90.0	98.4	49.7	41.3R
May	83.6	89.8	45.4	45.7
Jun	86.0	84.3	40.9	
Jul	81.4	99.1	33.6	
Aug	74.6	83.8	44.9	
Sep	90.0	93.7	50.1	
Oct	97.0	86.8	35.0	
Nov	91.6	78.8	45.2	
Dec	88.6	72.5	31.7R	

Indicator Series 16-18 Leisure & Hospitality, CPI and Confidence Index

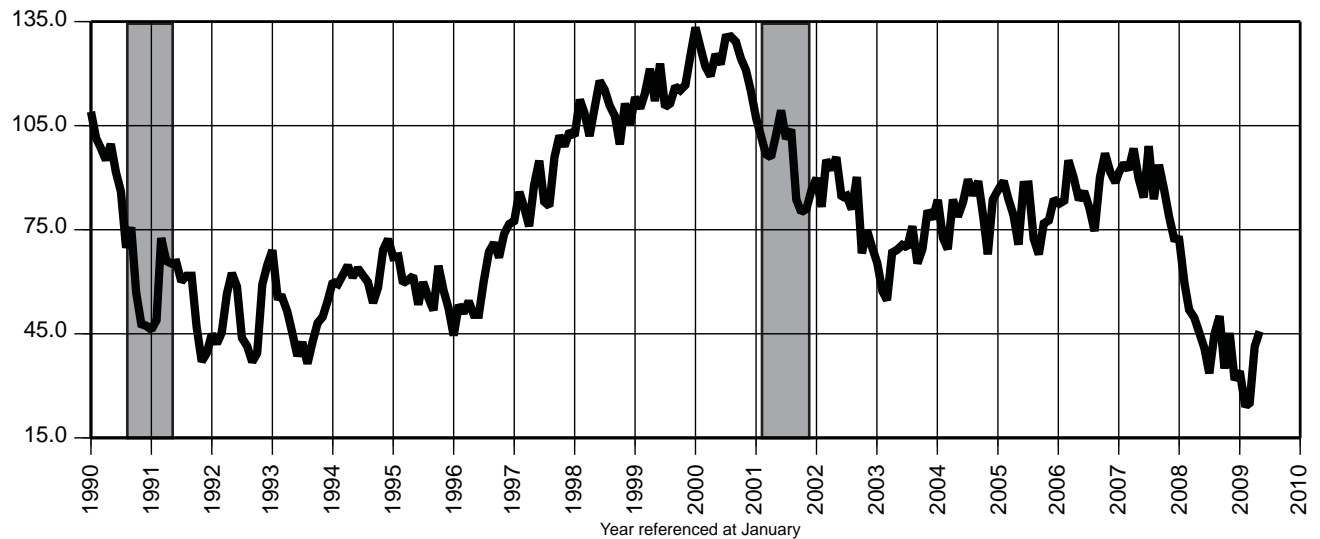
16. Leisure & Hospitality Payroll Employment (000)



17. Consumer Price Index - (CPI-U) (1982-84 = 100)



18. Consumer Confidence Index, Middle Atlantic Region



Indicator Series 19-21 Private Residential Building Permits

19. Total Private Dwelling Units Authorized by Building Permits

Date	2006		2007		2008		2009	
	Unadj.	Adj.	Unadj.	Adj.	Unadj.	Adj.	Unadj.	Adj.
Jan	2,548	3,006	2,077	2,248	1,635R	1,812R	707R	817R
Feb	2,502	3,272	1,648	2,184	1,301R	1,654R	1,178R	1,564R
Mar	2,989	2,946	1,871	1,902	2,074R	2,167R	1,294R	1,339R
Apr	2,654	2,597	2,100	1,983	2,197R	1,907R	824	727
May	3,044	2,838	1,992	1,928	1,658R	1,660R		
Jun	3,314	2,635	2,759	2,117	2,385R	1,949R		
Jul	4,516	4,616	1,905	1,984	1,301R	1,272R		
Aug	2,675	2,466	3,084	2,919	1,150R	1,205R		
Sep	2,850	2,762	1,896	1,940	1,386R	1,286R		
Oct	2,030	1,945	2,283	1,983	1,279R	1,161R		
Nov	3,196	3,132	2,133	2,145	917R	985R		
Dec	2,024	2,492	1,652	2,000	1,086R	1,135R		

20. Private Single-Family Dwelling Units Authorized by Building Permits

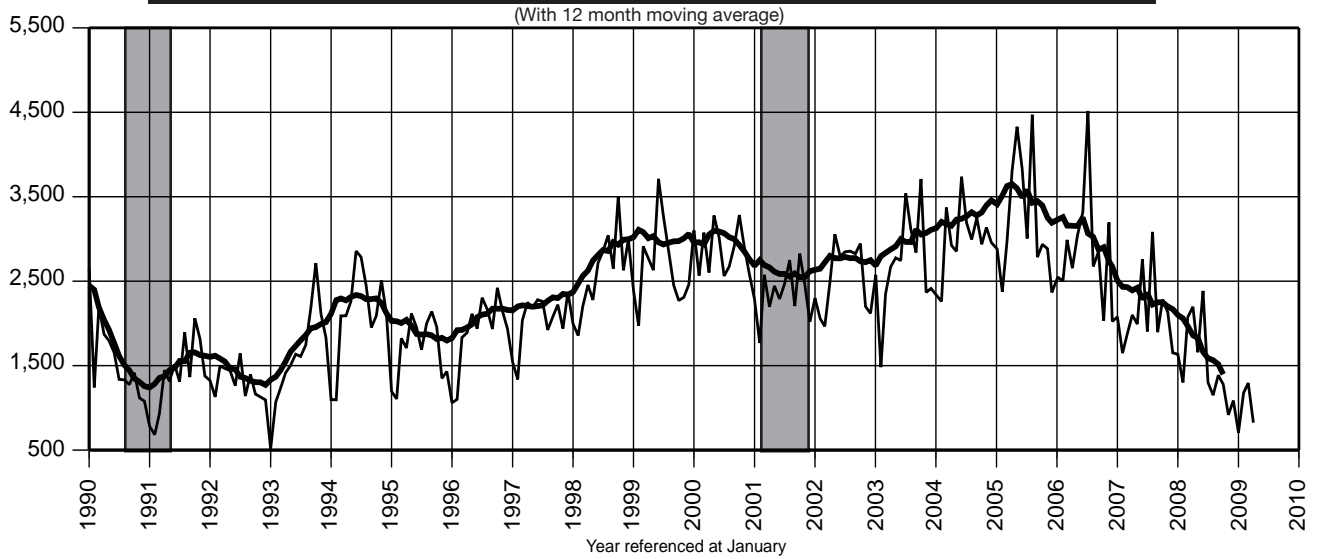
Date	2006		2007		2008		2009	
	Unadj.	Adj.	Unadj.	Adj.	Unadj.	Adj.	Unadj.	Adj.
Jan	1,592	1,839	1,084	1,216	830R	872R	430R	475R
Feb	1,301	1,641	953	1,200	668R	806R	370	468R
Mar	1,766	1,644	1,137	1,104	855R	878R	506R	489R
Apr	1,457	1,562	1,109	1,137	1,057R	976R	588	555
May	1,674	1,539	1,264	1,140	825R	756R		
Jun	1,635	1,356	1,328	1,158	759R	700R		
Jul	1,626	1,577	1,183	1,104	779R	679R		
Aug	1,536	1,321	1,552	1,324	741R	696R		
Sep	1,184	1,223	901	966	729R	745R		
Oct	1,254	1,185	937	873	800R	715R		
Nov	1,073	1,121	879	917	502R	602R		
Dec	1,032	1,221	750	891	630R	692R		

21. Private Multi-Dwelling Units Authorized by Building Permits

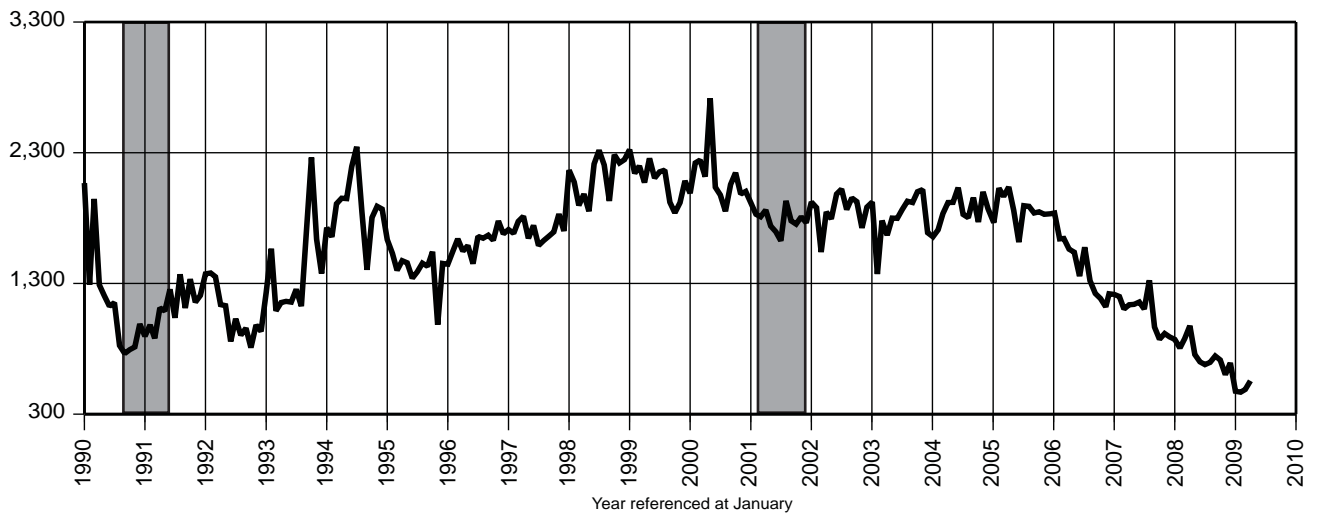
(Seasonality not statistically significant)

Date	2006	2007	2008	2009
	Unadj.	Unadj.	Unadj.	Unadj.
Jan	471	759	730R	229
Feb	924	379	531R	783R
Mar	694	514	1,124R	728R
Apr	876	767	987R	189
May	950	527	739R	
Jun	1,195	1,137	1,523R	
Jul	2,250	509	427R	
Aug	814	1,184	363R	
Sep	1,306	821	589R	
Oct	371	1,013	406R	
Nov	1,844	1,055	373R	
Dec	719	655	327	

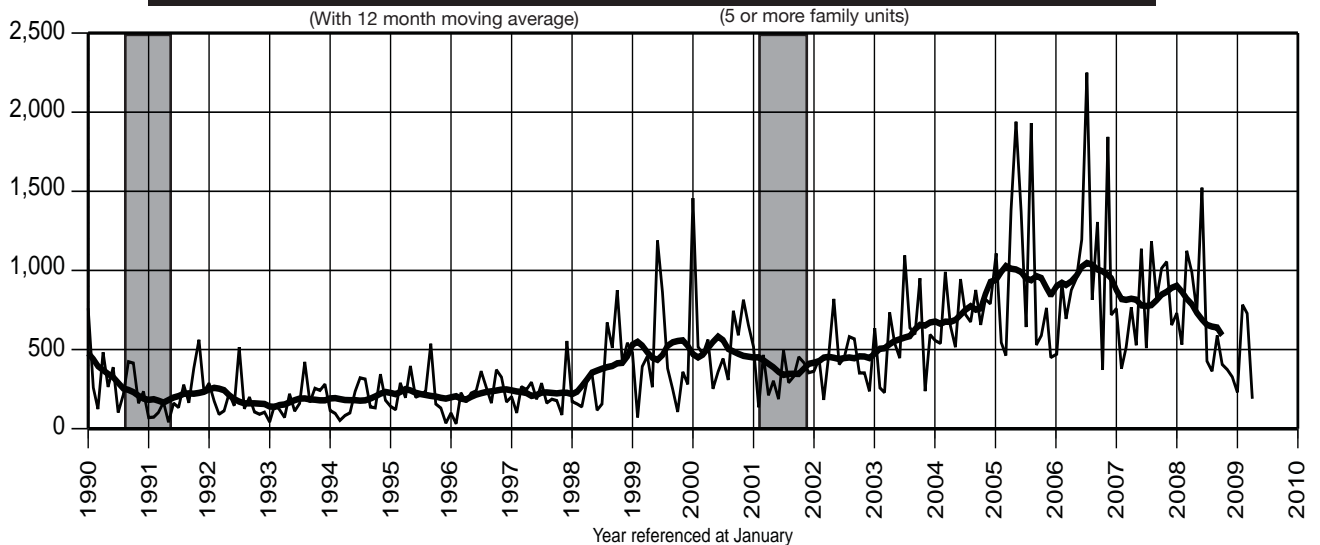
19. Total Private Dwelling Units Authorized by Building Permits



20. Private Single-Family Dwelling Units Authorized by Building Permits



21. Private Multi-Dwelling Units Authorized by Building Permits



22. Total New Vehicle Registrations*

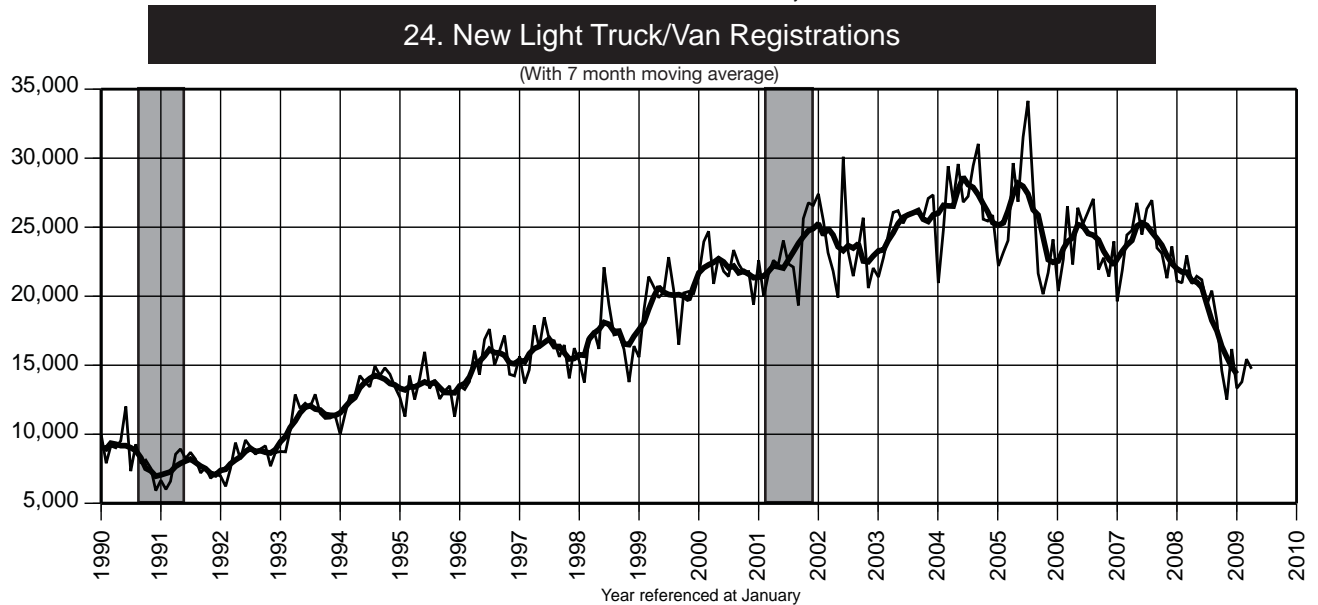
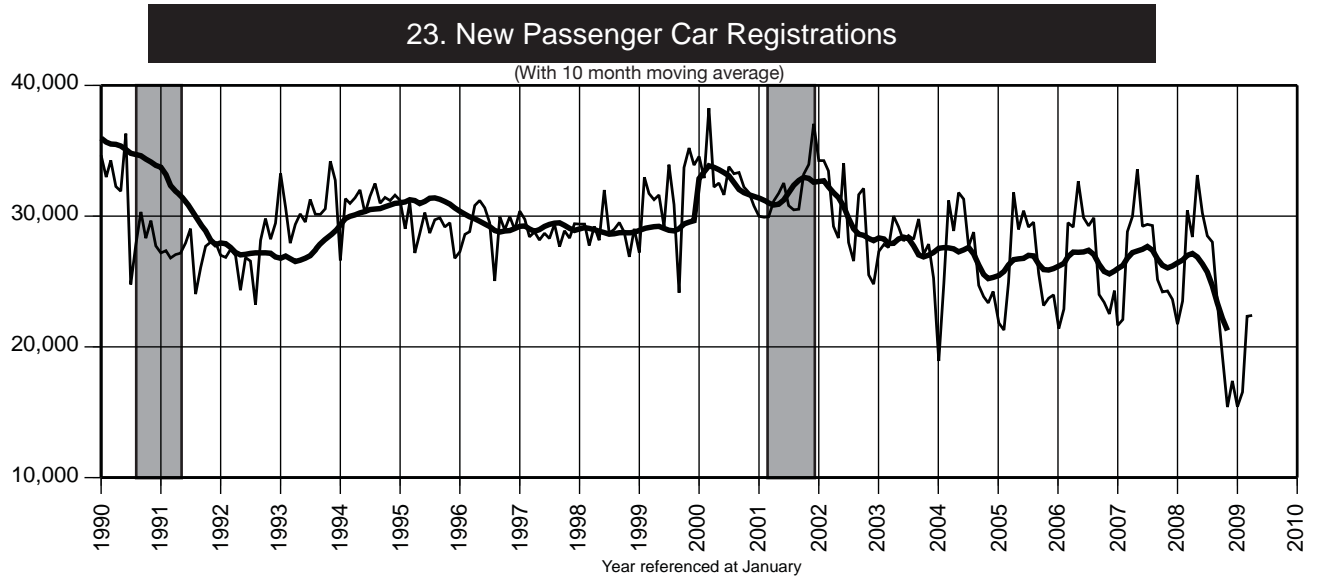
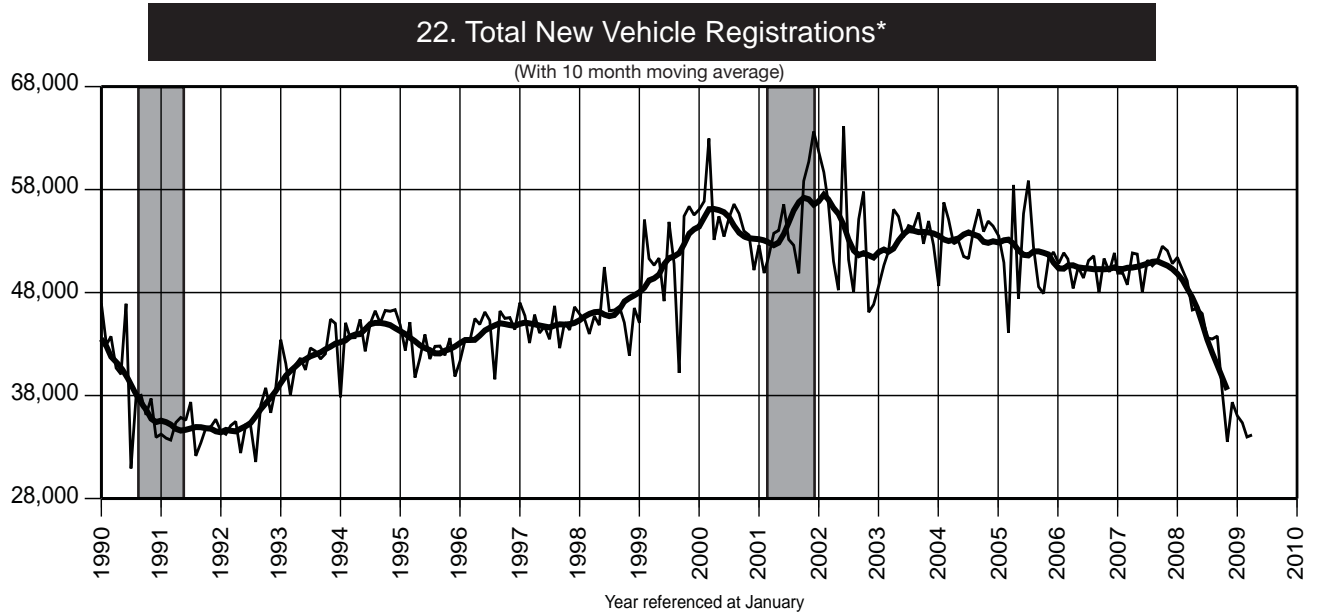
Date	2006		2007		2008		2009	
	Unadj.	Adj.	Unadj.	Adj.	Unadj.	Adj.	Unadj.	Adj.
Jan	41,772	50,824	41,273	49,890	42,833	51,413	28,753R	36,036R
Feb	45,584	51,857	43,966	49,893	44,478	50,203	30,340R	35,352R
Mar	56,014	51,259	53,249	48,760	53,401	49,138	37,779R	33,979R
Apr	51,459	48,400	54,747	51,838	49,305	46,311	37,148	34,169
May	59,073	50,472	60,346	51,725	54,589	46,462		
Jun	55,134	49,423	53,686	48,002	51,425	45,945		
Jul	55,377	51,101	55,701	51,134	47,829	43,601		
Aug	56,929	51,563	56,233	50,600	48,421	43,489		
Sep	45,923	47,968	48,643	51,104	41,534	43,767		
Oct	46,191	51,306	47,303	52,493	33,947	38,399		
Nov	43,940	50,007	45,582	52,060	27,907	33,502		
Dec	48,275	51,848	47,245	50,815	33,571	37,349		

23. New Passenger Car Registrations

Date	2006		2007		2008		2009	
	Unadj.	Adj.	Unadj.	Adj.	Unadj.	Adj.	Unadj.	Adj.
Jan	21,401	26,499	21,644	26,864	21,735	26,971	15,421R	20,674R
Feb	22,890	27,010	22,089	26,174	23,505	27,573	16,544R	20,538R
Mar	29,499	26,569	28,814	25,904	30,446	27,578	22,341R	19,454R
Apr	29,158	26,559	29,977	27,404	28,401	25,685	22,405	19,624
May	32,664	26,768	33,583	27,476	33,144	26,908		
Jun	29,891	25,923	29,219	25,283	30,234	26,278		
Jul	29,260	26,741	29,372	26,655	28,493	25,677		
Aug	29,876	27,049	29,281	26,368	28,016	25,149		
Sep	23,999	25,370	25,142	26,636	23,293	24,717		
Oct	23,406	26,614	24,202	27,439	19,334	22,558		
Nov	22,517	26,091	24,277	28,060	15,396	19,327		
Dec	24,301	27,699	23,636	27,150	17,397	21,171		

24. New Light Truck/Van Registrations

Date	2006		2007		2008		2009	
	Unadj.	Adj.	Unadj.	Adj.	Unadj.	Adj.	Unadj.	Adj.
Jan	20,371	24,325	19,629	23,026	21,098	24,442	13,332R	15,362R
Feb	22,694	24,847	21,877	23,720	20,973	22,631	13,796R	14,814R
Mar	26,515	24,690	24,435	22,857	22,955	21,560	15,438R	14,524R
Apr	22,301	21,841	24,770	24,434	20,904	20,626	14,743	14,544
May	26,409	23,704	26,763	24,249	21,445	19,553		
Jun	25,243	23,500	24,467	22,719	21,191	19,668		
Jul	26,117	24,361	26,329	24,479	19,336	17,924		
Aug	27,053	24,514	26,952	24,232	20,405	18,341		
Sep	21,924	22,597	23,501	24,469	18,241	19,049		
Oct	22,785	24,692	23,101	25,054	14,613	15,841		
Nov	21,423	23,915	21,305	24,000	12,511	14,174		
Dec	23,974	24,149	23,609	23,664	16,174	16,178		



*Includes only new passenger car and light truck/van registrations

Indicator Series 25-27 Unemployment Insurance Claimants**25. Weeks Claimed & Insured Unemployment Rate**

Date	2006		2007		2008		2009	
	WA	IUR	WA	IUR	WA	IUR	WA	IUR
Jan	107.9	2.8	108.5	2.8	114.4	2.9	172.7	4.4
Feb	105.7	2.8	111.1	2.9	114.2	2.9	184.3	4.7
Mar	105.0	2.7	111.6	2.9	117.0	3.0	201.0	5.1
Apr	104.7	2.7	112.5	2.9	119.2	3.1	220.6	5.7
May	105.4	2.7	111.8	2.9	124.0	3.2	230.9	5.9
Jun	105.9	2.8	111.2	2.9	126.4	3.2		
Jul	111.8	2.9	113.6	2.9	128.5	3.3		
Aug	110.6	2.9	113.0	2.9	132.1	3.4		
Sep	110.7	2.9	112.8	2.9	141.2	3.6		
Oct	108.9	2.8	112.8	2.9	150.0	3.8		
Nov	109.6	2.8	112.5	2.9	158.9	4.1		
Dec	108.5	2.8	113.0	2.9	165.6	4.2		

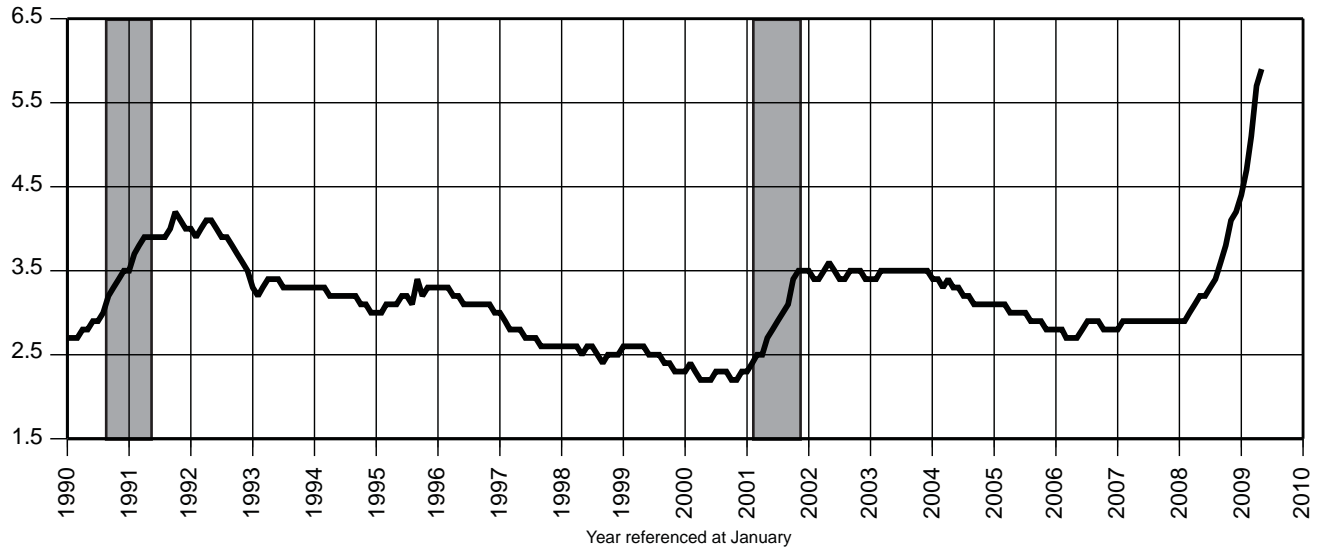
26. Initial Claims-Weekly Average

Date	2006		2007		2008		2009	
	Unadj.	Adj.	Unadj.	Adj.	Unadj.	Adj.	Unadj.	Adj.
Jan	13,034	10,111	13,850	10,859	13,768	10,606	20,137	14,634
Feb	9,451	9,749	10,515	10,923	10,184	10,004	17,193	17,917
Mar	7,927	9,357	8,609	10,073	10,260	12,631	13,895	17,723
Apr	10,564	10,202	11,080	10,822	10,163	10,088	14,848	14,086
May	7,638	10,387	8,087	10,746	8,653	10,793	12,197	15,503
Jun	12,675	10,165	12,320	9,911	13,684	11,511		
Jul	10,521	10,881	10,299	11,042	10,839	11,331		
Aug	8,617	10,682	8,600	10,150	9,691	11,507		
Sep	7,736	9,626	8,138	10,428	10,258	13,694		
Oct	8,535	10,348	9,136	11,027	11,748	13,201		
Nov	10,883	10,466	11,304	10,430	16,083	15,264		
Dec	13,813	9,540	14,785	10,609	17,301	12,952		

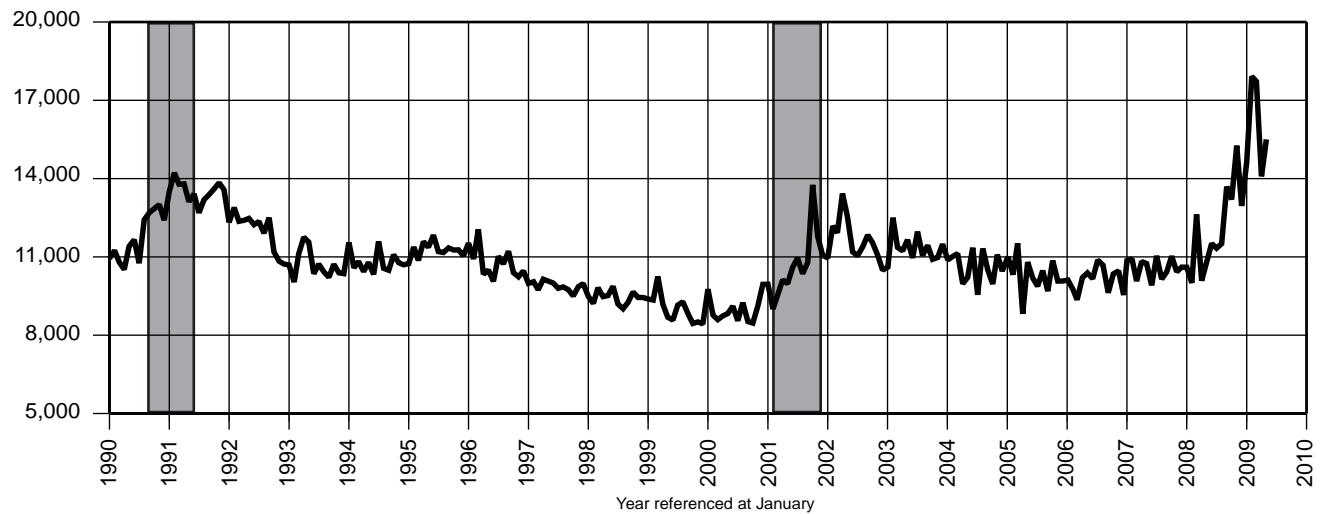
27. Unemployment Insurance Exhaustions

Date	2006	2007	2008	2009
	Unadj.	Unadj.	Unadj.	Unadj.
Jan	13,638	13,845	12,987	16,512
Feb	10,404	10,443	10,694	16,379
Mar	11,647	11,335	13,131	21,982
Apr	11,352	12,919	13,650	21,928
May	12,753	12,807	11,961	23,347
Jun	10,096	10,064	12,531	
Jul	12,361	13,085	14,466	
Aug	10,841	10,486	12,481	
Sep	9,439	10,014	14,953	
Oct	11,752	12,248	13,695	
Nov	9,862	9,909	13,103	
Dec	10,409	11,961	18,460	

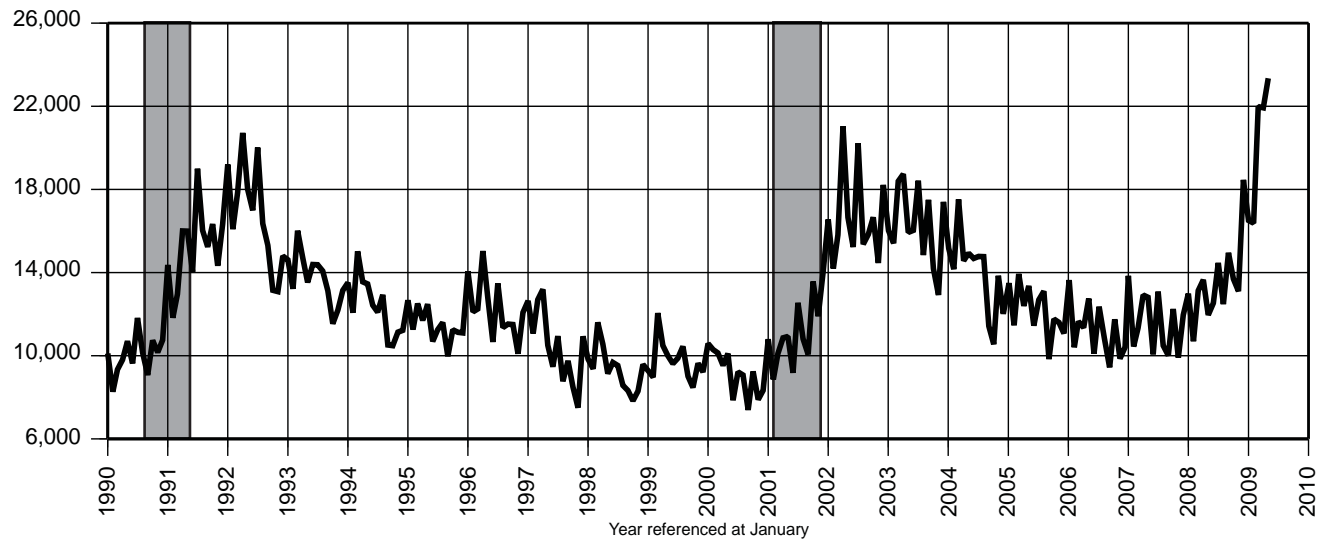
25. Insured Unemployment Rate



26. Initial Claims-Weekly Average



27. Unemployment Insurance Exhaustions



Indicator Series 1 to 27**Annual Averages 1998-2008**

Indicator Series	1998	1999	2000	2001	2002	2003	2004	2005	2006	2007	2008
1 Civilian Labor Force (000)	4,242.4	4,284.6	4,287.8	4,302.3	4,370.8	4,363.9	4,358.9	4,416.1	4,477.5	4,462.3	4,496.7
2 Resident Employment (000)	4,047.1	4,092.7	4,130.3	4,117.5	4,117.3	4,108.4	4,144.2	4,218.5	4,269.6	4,271.7	4,251.2
3 Resident Unemployment (000)	195.3	191.8	157.5	184.8	253.5	255.5	214.7	197.6	207.9	190.6	245.5
4 Labor Force Particip. Rate (%)	66.8	67.0	66.6	66.2	66.7	66.1	65.8	66.3	66.9	66.4	66.2
5 Employment/Pop. Rate (%)	63.7	64.0	64.1	66.3	62.6	62.2	62.6	63.4	63.8	63.6	62.9
6 Unemployment Rate (%)	4.6	4.5	3.7	4.3	5.8	5.9	4.9	4.5	4.6	4.3	5.5
7 Nonfarm Payroll Emp. (000)	3,801.3	3,901.1	3,994.5	3,997.2	3,983.9	3,978.8	3,999.1	4,039.1	4,071.0	4,078.9	4,058.3
8 Priv. Sec. Nonfarm Emp. (000)	3,229.6	3,323.5	3,405.7	3,394.6	3,370.4	3,356.9	3,365.7	3,397.5	3,423.7	3,431.2	3,407.1
9 Construction Emp. (000)	136.1	143.6	149.6	158.8	162.6	160.5	165.9	169.1	174.9	172.3	164.8
10 Manufacturing Emp. (000)	429.4	422.5	421.6	401.2	367.5	350.4	338.2	330.4	323.8	311.3	298.9
11 Trade, Transportation and Utilities Emp. (000)	847.6	873.7	899.0	890.7	881.4	876.2	874.7	877.3	874.9	874.5	864.0
12 Information Emp. (000)	118.9	123.0	126.9	126.4	113.2	102.0	98.0	97.1	97.4	96.0	92.4
13 Financial Activities Emp. (000)	248.7	260.8	266.9	269.8	276.7	276.2	276.9	279.7	279.2	275.7	269.3
14 Professional and Business Services Emp. (000)	554.0	579.1	598.5	592.5	581.1	578.2	584.5	592.5	604.6	616.6	614.9
15 Education and Health Services Emp. (000)	466.1	480.9	495.8	505.4	527.1	538.0	546.4	558.4	568.4	579.7	592.0
16 Leisure & Hospitality Emp. (000)	294.2	300.0	303.3	304.2	311.0	321.4	325.5	333.4	338.5	340.0	344.2
17 CPI-U for the US ('82-'84=100)	163.0	166.6	172.2	177.1	179.9	184.0	188.9	195.3	201.6	207.3	215.3
18 Mid-Atl. Consumer Conf. Index	108.6	108.6	125.1	95.8	84.0	68.7	80.4	80.3	87.0	88.8	46.7
19 Total Dwelling Units (No.) - F	2,612	2,665	2,880	2,356	2,538	2,715	2,995	3,219	2,862	2,117	1,531
20 Single-Fam. Dwell. Units (No.) - F	2,122	2,094	2,103	1,793	1,864	1,820	1,870	1,856	1,428	1,090	765
21 Multi-Fam. Dwell. Units (No.) - F	374	424	515	347	435	580	728	976	1,035	777	677
22 Tot. New Vehicle Regis. (No.)	45,884	50,990	55,301	54,624	53,865	53,584	53,510	51,784	50,473	50,664	44,103
23 New Passenger Car Regis. (No.)	29,047	31,201	33,120	31,667	30,183	28,149	26,631	26,199	26,572	26,770	24,950
24 New Lt. Truck/Van Regis. (No.)	16,837	19,790	22,182	22,957	23,683	25,435	26,879	25,591	23,901	23,895	19,154
25 Wks. Claimed Wkly. Avg. (000)	90.2	90.8	84.3	108.4	132.4	130.9	122.6	112.9	107.9	112.0	131.6
26 Insured Unemp. Rate (%)	2.6	2.5	2.3	2.9	3.5	3.5	3.2	3.0	2.8	2.9	3.4
Initial Claims Wkly. Avg. (No.)	9,454	9,003	9,056	10,637	11,595	11,331	10,730	10,323	10,116	10,560	11,886
27 Exhaustions (No.)	9,360	9,757	9,138	11,136	16,686	16,317	14,034	12,179	11,213	11,593	13,509

Notes: See page S-32 for data sources. Data shown using latest available benchmarks. For Dwelling Unit data, "F"=Final.

Employment Data

New Jersey Nonfarm Payroll Employment (000)

(seasonally adjusted)

NAICS Industry	2008					2009							
	May	Jun	Jul	Aug	Sep	Oct	Nov	Dec	Jan	Feb	Mar	Apr	May
Total Nonfarm (1)*	4,070.2	4,066.2	4,058.3	4,051.1	4,046.6	4,037.4	4,014.6	4,000.5	3,987.8	3,973.3	3,960.0	3,941.3	3,935.1
Total Private Sector*	3,419.8	3,414.9	3,406.5	3,401.4	3,396.5	3,382.9	3,361.5	3,348.1	3,335.8	3,322.8	3,309.1	3,289.2	3,282.6
Goods Producing*	469.4	467.8	466.1	463.6	461.6	456.0	450.5	444.5	435.4	429.6	426.7	419.8	415.3
Natural Resources and Mining**	1.7	1.7	1.7	1.7	1.7	1.7	1.7	1.7	1.5	1.5	1.6	1.6	1.7
Construction	165.8	164.8	164.4	163.1	162.3	161.8	158.7	156.6	153.8	151.2	151.9	146.8	141.9
Manufacturing*	301.9	301.3	300.0	298.8	297.6	292.5	290.1	286.2	280.1	276.9	273.2	271.4	271.7
Durable Goods	135.9	136.0	135.5	135.0	134.2	132.8	130.9	128.9	125.9	122.6	120.6	120.2	120.0
Non-Durable Goods	166.0	165.3	164.5	163.8	163.4	159.7	159.2	157.3	154.2	154.3	152.6	151.2	151.7
Service-Providing*	3,600.8	3,598.4	3,592.2	3,587.5	3,585.0	3,581.4	3,564.1	3,556.0	3,552.4	3,543.7	3,533.2	3,521.5	3,519.8
Private Service-Providing*	2,950.4	2,947.1	2,940.4	2,937.8	2,934.9	2,926.9	2,911.0	2,903.6	2,900.4	2,893.2	2,882.4	2,869.4	2,867.3
Trade, Transportation, & Utilities*	867.9	866.8	865.4	864.7	863.3	855.2	848.6	844.0	851.3	853.5	851.7	847.7	841.9
Wholesale Trade	232.7	232.1	231.4	230.9	230.7	229.9	230.2	230.4	231.4	228.4	228.0	227.2	227.4
Retail Trade	459.5	459.4	459.5	459.1	459.0	453.9	447.4	443.7	449.3	455.3	455.9	454.9	449.5
Trans., Warehousing, and Utilities	175.7	175.3	174.5	174.7	173.6	171.4	171.0	169.9	170.6	169.8	167.8	165.6	165.0
Information	92.9	92.7	92.0	91.8	91.5	90.7	90.2	90.1	90.4	89.8	88.9	90.1	89.0
Financial Activities*	272.3	271.4	268.8	268.7	268.0	264.4	260.1	260.8	259.6	258.8	259.2	259.0	258.9
Finance and Insurance	212.1	211.3	209.3	209.1	208.3	203.0	199.2	200.4	203.4	204.2	204.6	204.7	203.7
Real Estate/Rental & Leasing	60.2	60.1	59.5	59.6	59.7	61.4	60.9	60.4	56.2	54.6	54.6	54.3	55.2
Prof. and Business Services*	618.6	616.4	616.8	615.3	613.7	606.3	603.7	599.3	591.5	584.4	581.1	577.8	577.2
Prof., Sci., & Tech. Services	290.6	289.4	290.5	290.5	290.4	291.8	290.0	288.4	281.5	280.2	280.0	275.2	273.2
Mgmt. of Companies & Enterprises	75.0	75.1	75.3	75.1	75.1	74.3	73.9	73.7	75.5	75.1	74.6	75.0	75.2
Adm/Support, Waste Mgt/ Remed. Srvs.	253.0	251.9	251.0	249.7	248.2	240.2	239.8	237.2	234.5	229.1	226.5	227.6	228.8
Educational and Health Services*	588.3	590.2	590.1	591.0	591.8	599.8	599.9	600.3	597.9	599.1	598.3	599.2	598.2
Educational Services	89.2	91.2	90.3	90.2	90.7	94.8	93.7	94.8	94.2	96.3	95.8	94.3	93.4
Health Care and Social Assistance	499.1	499.0	499.8	500.8	501.1	505.0	506.2	505.5	503.7	502.8	502.5	504.9	504.8
Leisure and Hospitality*	345.2	343.9	341.6	340.2	340.5	344.3	346.0	345.7	346.0	343.4	340.1	332.8	338.0
Arts, Entertainment, & Recreation	54.6	54.1	53.7	53.8	53.1	54.3	55.5	56.0	56.4	56.6	55.4	51.0	52.2
Accommodation and Food Srvs.	290.6	289.8	287.9	286.4	287.4	290.0	290.5	289.7	289.6	286.8	284.7	281.8	285.8
Other Services (2)	165.2	165.7	165.7	166.1	166.1	166.2	162.5	163.4	163.7	164.2	163.1	162.8	164.1
Total Government*	650.4	651.3	651.8	649.7	650.1	654.5	653.1	652.4	652.0	650.5	650.9	652.1	652.5
Federal Government	60.0	59.9	59.9	59.8	59.6	59.8	58.8	58.7	59.3	58.9	58.8	60.7	60.6
State Government (3)	153.7	154.0	153.6	152.1	152.5	151.2	150.1	148.3	148.9	147.2	147.5	146.7	147.3
Local Government	436.7	437.4	438.3	437.8	438.0	443.5	444.2	445.4	443.8	444.4	444.6	444.7	444.6

Notes:

1. Nonfarm payroll employment includes civilians on nonfarm establishment payrolls who worked or received pay for any part of the pay period including the 12th of the month. It excludes proprietors, self-employed, unpaid family members and domestics in private households. All data are revised to March 2008 benchmarks. Individual series may not add to sector or supersector totals because not all sector/supersector components are published.
2. "Other Services" include: Repair and maintenance; Personal and laundry services; Religious, grantmaking, civic, professional and similar organizations.
3. The total number of state employees reported under this heading is determined on the basis of a definition developed by the US Bureau of Labor Statistics which is standardized throughout the nation. The definition includes both full- and part-time workers in the executive departments, the legislature, and the judiciary, as well as all employees of authorities, commissions, the state universities and colleges, and other agencies not included on the central payroll.

* Seasonally adjusted total has been indirectly computed from the sum of the underlying industries.

** The industry is not seasonally adjusted because seasonality is not statistically significant.

Employment Data**New Jersey Nonfarm Payroll Employment (000)**

(not seasonally adjusted)

NAICS Industry	2008					2009							
	May	Jun	Jul	Aug	Sep	Oct	Nov	Dec	Jan	Feb	Mar	Apr	May
Total Nonfarm (1)	4,093.8	4,140.3	4,081.3	4,052.3	4,042.9	4,059.4	4,052.3	4,036.2	3,916.5	3,899.0	3,913.1	3,925.6	3,953.8
Total Private Sector	3,434.8	3,478.1	3,453.8	3,440.1	3,409.3	3,396.9	3,387.2	3,372.3	3,265.8	3,239.6	3,251.4	3,261.9	3,292.1
Goods Producing	472.5	475.9	473.0	472.0	468.5	462.2	455.2	446.7	422.6	413.1	415.1	416.3	417.0
Natural Resources and Mining	1.7	1.7	1.7	1.7	1.7	1.7	1.7	1.7	1.5	1.5	1.6	1.6	1.7
Construction	168.6	170.7	171.0	170.6	168.3	167.1	162.2	157.8	143.5	136.9	141.2	144.0	143.9
Construction of Buildings	38.5	39.3	39.1	38.8	38.0	37.3	37.0	37.8	35.6	34.3	33.8	33.0	32.1
Residential Building Construction	25.5	26.0	25.8	25.6	25.2	25.2	24.8	24.7	24.4	23.4	23.0	22.4	22.2
Heavy and Civil Engineering	19.3	19.3	19.7	19.6	19.5	19.9	19.5	18.1	15.1	15.2	16.1	17.4	18.3
Specialty Trade Contractors	110.8	112.1	112.2	112.2	110.8	109.9	105.7	101.9	92.8	87.4	91.3	93.6	93.5
Building Equipment Contractors	54.1	54.3	54.8	55.0	54.5	54.6	54.7	54.2	50.6	48.6	48.7	46.9	47.0
Manufacturing	302.2	303.5	300.3	299.7	298.5	293.4	291.3	287.2	277.6	274.7	272.3	270.7	271.4
Durable Goods	136.1	136.9	135.9	135.2	134.5	132.9	130.9	129.2	124.9	121.9	120.5	120.2	120.1
Fabricated Metal Product	26.4	26.6	26.4	26.3	25.9	25.8	25.8	25.7	25.2	25.1	25.1	25.1	25.2
Machinery Manufacturing	16.6	16.6	16.6	16.5	16.5	16.4	16.3	16.4	16.3	16.2	16.2	16.0	16.0
Computer and Electronic Products	30.4	30.6	30.8	30.7	30.6	30.6	30.6	30.4	30.1	30.0	30.0	30.0	30.0
Navig., Meas, Electromedical & Control Inst.	15.6	15.8	15.8	15.7	15.6	15.6	15.7	15.6	15.6	15.6	15.6	15.5	15.5
Transportation Equip. Mfg.	6.1	6.0	5.8	5.7	5.7	5.7	5.7	5.7	5.6	5.6	5.3	5.3	5.3
Miscellaneous Mfg.	20.3	20.5	20.5	20.3	20.3	20.3	20.2	20.0	19.2	19.2	19.5	19.5	19.6
Non-Durable Goods	166.1	166.6	164.4	164.5	164.0	160.5	160.4	158.0	152.7	152.8	151.8	150.5	151.3
Food Manufacturing	29.5	30.0	29.8	29.9	29.8	30.0	31.0	31.1	30.8	30.9	30.9	30.6	30.8
Paper Manufacturing	13.8	13.7	13.3	13.3	13.5	13.4	13.4	13.3	13.3	13.2	13.2	13.1	13.0
Printing and Related Support	21.8	21.6	21.1	21.1	21.0	20.8	20.8	20.7	20.4	20.2	20.2	20.1	20.0
Chemical Manufacturing	65.9	66.1	65.6	65.2	65.2	65.0	64.8	64.6	63.6	64.2	63.8	63.3	63.2
Basic Chemical Manufacturing	8.6	8.7	8.5	8.5	8.5	8.5	8.5	8.5	8.6	8.5	8.5	8.5	8.5
Pharmaceutical and Medicine	38.1	38.3	38.4	37.7	37.6	37.7	37.7	37.6	37.3	37.1	37.2	37.1	37.3
Plastics and Rubber Products	17.0	17.0	16.5	16.5	16.4	16.3	16.3	16.1	15.8	15.7	15.6	15.6	15.6
Service-Providing	3,621.3	3,664.4	3,608.3	3,580.3	3,574.4	3,597.2	3,597.1	3,589.5	3,493.9	3,485.9	3,498.0	3,509.3	3,536.8
Private Service-Providing	2,962.3	3,002.2	2,980.8	2,968.1	2,940.8	2,934.7	2,932.0	2,925.6	2,843.2	2,826.5	2,836.3	2,845.6	2,875.1
Trade, Transportation, & Utilities	865.6	874.0	863.2	859.4	859.2	858.4	870.4	872.6	843.9	836.3	837.8	835.6	838.8
Wholesale Trade	233.1	234.1	232.7	231.7	230.7	228.6	234.9	232.8	229.2	226.1	225.9	225.9	227.1
Merchant Wholesalers, Durable Goods	116.7	117.2	116.7	116.4	115.7	113.7	117.4	116.5	113.3	111.7	111.4	110.6	111.4
Professional & Comm. Equip., & Supplies	32.3	32.4	32.2	32.2	32.1	32.1	32.8	32.9	32.7	32.7	32.6	32.7	32.7
Grocery and Related Product - Nondurable Goods	29.1	29.3	29.2	29.0	28.9	28.9	28.9	28.8	28.5	28.5	28.5	28.5	28.8
Wholesale Electronic Markets, Agents and Brokers	31.7	31.8	31.4	31.2	31.1	30.9	32.6	33.1	33.6	32.8	32.8	33.0	33.2

See notes on page S-23. Shaded rows on pp. 24-27 indicate employment at the NAICS supersector level.

Employment Data**New Jersey Nonfarm Payroll Employment (000)**

(not seasonally adjusted)

NAICS Industry	2008							2009					
	May	Jun	Jul	Aug	Sep	Oct	Nov	Dec	Jan	Feb	Mar	Apr	May
Retail Trade	455.7	463.0	461.6	459.5	453.6	454.6	460.8	466.7	446.0	442.0	444.7	445.0	445.9
Motor Vehicle and Parts Dealers	47.0	47.0	46.6	46.5	45.9	45.6	45.2	45.0	44.7	45.2	45.4	45.7	45.7
Automobile Dealers	34.1	34.0	33.7	33.6	33.3	33.1	32.8	32.5	32.2	32.3	32.3	32.3	32.1
Furniture and Home Furnishings Stores	18.3	18.1	17.9	17.8	17.6	17.9	19.0	19.6	18.1	17.5	17.4	17.1	17.0
Electronics and Appliance Stores	16.5	16.5	16.7	16.8	16.8	17.2	18.2	18.7	17.9	18.0	17.9	17.8	17.4
Building Mat. & Garden Equip. & Supp. Dlr.	36.1	35.9	34.9	34.0	33.5	33.5	33.1	32.6	31.5	31.7	31.7	32.9	33.9
Food and Beverage Stores	109.3	111.8	112.2	111.8	109.4	106.8	107.2	109.4	105.3	105.9	106.7	107.8	109.9
Health and Personal Care Stores	38.4	39.1	38.3	38.2	37.9	38.0	38.3	38.2	37.4	37.3	36.7	36.8	36.4
Clothing and Clothing Accessories Stores	58.0	60.0	60.1	60.0	58.2	60.7	66.0	67.9	60.8	58.6	58.4	59.5	60.8
Sporting Goods, Hobby, Book, & Music Stores	19.4	19.6	19.6	19.8	19.9	20.1	21.3	22.3	19.9	18.9	19.0	18.9	18.6
General Merchandise Stores	64.2	65.5	65.8	65.8	66.0	66.5	70.3	71.6	66.0	63.3	65.0	63.9	64.4
Department Stores	50.8	51.7	51.8	51.8	52.3	52.8	56.4	57.2	52.5	50.5	52.1	51.1	51.4
Transportation, Warehousing, and Utilities	176.8	176.9	168.9	168.2	174.9	175.2	174.7	173.1	168.7	168.2	167.2	164.7	165.8
Utilities	11.9	12.1	12.2	12.2	12.0	12.0	12.0	12.1	12.3	12.2	12.5	12.5	12.6
Elec.Pwr Gen., Transmission & Distribution	6.0	6.0	6.0	6.0	5.9	6.0	6.0	6.0	6.0	6.0	6.1	6.1	6.1
Natural Gas Distribution	3.8	3.9	3.9	3.9	3.8	3.8	3.8	3.8	3.9	3.9	4.0	4.0	4.0
Transportation and Warehousing	164.9	164.8	156.7	156.0	162.9	163.2	162.7	161.0	156.4	156.0	154.7	152.2	153.2
Air Transportation	18.6	18.7	18.5	18.4	18.3	18.1	18.2	18.3	18.3	18.3	18.5	18.5	18.6
Truck Transportation	37.3	37.0	36.6	36.7	36.6	35.7	35.6	34.7	32.5	33.2	33.1	33.6	33.6
General Freight Trucking	28.2	27.6	27.4	27.5	27.6	27.4	26.9	26.7	25.8	26.0	25.9	26.1	26.1
Transit and Ground Passenger Transportation	31.2	31.0	24.0	22.5	30.3	31.2	30.8	30.7	30.4	30.7	30.9	29.8	30.9
Support Activities for Transportation	22.2	22.3	22.0	22.0	21.8	21.9	21.8	21.9	21.6	21.6	21.7	21.4	21.3
Couriers and Messengers	22.7	22.7	22.9	23.5	23.3	22.9	23.9	26.8	22.5	22.6	22.6	22.3	22.4
Warehousing and Storage	28.3	28.2	27.7	27.9	27.8	28.0	28.2	28.2	28.1	28.0	28.0	27.7	27.7
Information	92.7	93.4	92.1	92.1	91.2	90.8	90.7	90.7	90.0	89.0	88.8	89.6	88.8
Publishing Industries (except Internet)	27.0	27.1	26.8	26.8	26.6	26.5	26.6	26.7	26.1	26.0	25.8	25.8	25.3
Telecommunications	40.8	40.8	40.4	40.4	40.2	40.2	40.3	40.3	40.3	40.3	40.2	39.8	39.7
Wired Telecommunications Carriers	32.3	32.3	31.9	31.9	31.7	31.8	32.0	32.0	32.1	32.3	32.5	32.2	32.3
Internet Serv. Prvdrs., Web Srch. Portals & D.P.S.	9.2	9.2	9.2	9.1	9.0	8.9	8.9	8.9	8.7	8.7	8.7	8.6	8.5
Financial Activities	272.5	274.2	272.8	272.1	267.7	264.0	259.7	260.8	257.9	256.6	257.5	257.7	258.8
Finance and Insurance	212.1	212.5	211.5	210.7	207.3	202.5	198.9	200.6	203.0	203.6	204.2	204.3	203.5
Credit Intermediation & Related Activities	74.5	74.3	73.0	72.6	71.6	70.3	67.9	68.1	67.6	68.0	68.1	68.0	67.8
Depository Credit Intermediation	52.0	51.9	51.0	51.2	50.6	50.4	50.6	50.8	50.8	50.9	51.2	51.1	51.1
Nondepository Credit Interditiion	16.8	16.7	16.4	16.0	15.5	15.2	14.9	14.4	13.6	13.3	13.0	13.0	13.1

See notes on page S-23. Shaded rows on pp. 24-27 indicate employment at the NAICS supersector level.

Employment Data

New Jersey Nonfarm Payroll Employment (000)

(not seasonally adjusted)

NAICS Industry	2008						2009						
	May	Jun	Jul	Aug	Sep	Oct	Nov	Dec	Jan	Feb	Mar	Apr	May
Securities, Commodity Contracts & Other	54.2	54.6	55.0	54.7	53.1	52.7	52.5	52.8	52.7	50.8	50.7	50.8	50.5
Scrty & Comdty Contracts Intermed & Brkrage	41.2	41.5	41.9	41.6	40.1	39.6	39.4	39.8	40.0	40.0	40.0	40.5	40.4
Ins. Carriers & Rel Activities	81.9	82.3	82.2	81.9	81.3	81.1	80.7	80.7	83.0	83.0	83.1	82.4	82.5
Insurance Carriers	51.3	51.5	51.4	51.1	50.7	50.5	50.5	50.5	49.9	49.9	50.3	50.0	49.9
Agencies, Brkrages, & other Ins. Rel. Activities	30.6	30.8	30.8	30.8	30.6	30.6	30.2	30.2	33.1	33.1	32.8	32.4	32.6
Real Estate/Rental & Leasing	60.4	61.7	61.3	61.4	60.4	61.5	60.8	60.2	54.9	53.0	53.3	53.4	55.3
Real Estate	40.9	41.7	41.9	41.9	41.1	42.7	42.1	41.8	37.1	35.9	36.6	36.6	38.2
Rental and Leasing Svcs.	18.5	19.0	18.4	18.5	18.3	18.2	18.2	18.1	17.3	17.2	17.1	17.4	17.8
Professional & Business Svcs.	619.4	625.5	624.7	624.9	618.4	613.4	609.2	599.9	574.1	566.6	570.4	575.6	578.2
Professional, Sci., & Tech. Svcs.	289.0	290.8	291.9	291.1	287.7	291.7	290.3	289.1	279.2	278.8	279.7	276.2	272.2
Legal Services	41.2	41.9	41.6	41.1	40.6	40.1	39.7	39.3	38.4	39.0	39.2	39.1	38.8
Accounting/Tax Prep/Bookkeep/ Payroll Services	35.7	35.7	35.8	36.0	35.3	35.4	35.8	35.0	34.3	35.5	34.8	35.4	34.6
Architectural, Engineering & Related Services	40.8	41.4	41.7	41.4	40.7	41.8	41.4	40.4	38.2	37.9	37.2	38.3	38.2
Computer Systems Design & Related Services	63.0	62.9	63.8	64.0	63.4	64.4	62.7	63.6	58.8	58.5	58.1	55.9	55.8
Management, Sci & Tech Consulting Services	36.3	36.5	36.6	36.9	36.1	36.1	36.7	37.1	38.1	37.4	39.4	36.7	35.4
Scientific Research & Development Services	31.3	31.6	31.8	31.4	31.2	31.1	31.0	31.1	30.9	30.8	31.0	30.9	31.1
Advertising and Related Services	16.5	16.5	16.5	16.4	16.4	16.5	16.6	16.7	16.2	16.3	16.4	16.5	16.4
Management of Companies and Enterprises	74.4	75.3	75.6	75.4	74.8	74.2	74.1	74.3	75.1	74.7	74.5	74.6	75.0
Adm/Support Waste Mgt/ Remediation Services	256.0	259.4	257.2	258.4	255.9	247.5	244.8	236.5	219.8	213.1	216.2	224.8	231.0
Employment Services	90.9	91.0	90.0	91.7	91.7	88.3	88.0	84.0	73.1	69.0	70.1	70.0	73.2
Business Support Services	17.1	17.5	17.3	17.1	17.3	17.1	17.5	17.9	17.4	17.6	17.8	17.8	17.7
Investigation & Security Svcs.	28.2	28.3	28.2	28.3	28.1	28.1	28.2	28.2	28.1	28.0	28.0	28.0	28.1
Svcs. to Buildings & Dwellings	70.4	72.6	72.0	71.3	69.4	65.9	62.7	56.0	52.6	48.6	51.7	58.2	62.5
Educational & Health Services	592.7	593.7	585.2	582.1	587.6	601.5	603.6	604.4	595.3	598.6	600.5	601.3	602.2
Educational Services	92.7	91.5	85.6	83.1	88.4	96.8	96.4	97.4	92.6	97.1	97.9	96.5	96.2
Elementary and Secondary Schools	37.0	36.6	33.0	31.9	35.6	36.6	36.9	36.5	36.2	36.6	36.8	36.6	37.0
Colleges, Universities, and Professional Schools	29.8	26.9	26.5	26.2	29.0	32.1	31.6	31.9	27.5	31.0	31.8	32.0	31.4
Health Care and Social Assistance	500.0	502.2	499.6	499.0	499.2	504.7	507.2	507.0	502.7	501.5	502.6	504.8	506.0
Ambulatory Health Care Svcs.	182.8	183.5	183.0	183.1	183.2	185.2	186.1	186.3	183.4	184.7	185.6	186.7	187.8
Offices of Physicians	68.7	69.0	69.0	69.1	68.9	69.2	69.4	69.1	68.7	69.1	70.5	70.9	71.7
Offices of Dentists	28.0	28.1	27.9	27.9	27.9	27.7	28.0	28.0	27.4	27.7	27.6	27.8	27.5
Home Health Care Services	30.4	30.3	30.4	30.5	30.8	30.9	30.9	31.3	30.1	29.9	30.3	30.3	30.7

See notes on page S-23. Shaded rows on pp. 24-27 indicate employment at the NAICS supersector level.

Employment Data**New Jersey Nonfarm Payroll Employment (000)**

(not seasonally adjusted)

NAICS Industry	2008							2009					
	May	Jun	Jul	Aug	Sep	Oct	Nov	Dec	Jan	Feb	Mar	Apr	May
Hospitals	155.8	156.9	156.8	156.6	156.3	156.6	156.6	155.8	155.0	153.7	152.9	153.5	153.0
Nursing and Residential Care Facilities	84.0	84.6	84.4	84.7	84.2	84.8	85.1	84.7	83.6	83.3	83.8	84.4	84.5
Nursing Care Facilities	48.4	48.7	48.7	48.8	48.5	48.6	48.8	48.8	48.7	48.6	48.8	49.0	49.1
Community Care Facilities for the Elderly	18.4	18.5	18.3	18.4	18.3	18.3	18.4	18.5	18.5	18.6	18.7	18.4	18.6
Social Assistance	77.4	77.2	75.4	74.6	75.5	78.1	79.4	80.2	80.7	79.8	80.3	80.2	80.7
Child Day Care Services	38.1	37.9	35.1	34.6	36.7	37.6	37.7	38.0	37.8	37.9	38.2	38.2	38.5
Leisure and Hospitality	352.4	371.8	374.1	369.8	352.3	340.9	337.0	335.1	321.5	318.1	320.2	323.2	343.0
Arts, Entertainment, and Recreation	57.1	64.9	70.5	69.2	56.8	52.8	50.8	50.0	45.4	45.5	46.6	48.2	53.7
Amusement, Gambling & Recreation Industries	44.7	52.4	58.1	57.2	45.3	41.3	39.7	39.3	36.1	36.2	37.2	38.3	43.4
Accommodation and Food Services	295.3	306.9	303.6	300.6	295.5	288.1	286.2	285.1	276.1	272.6	273.6	275.0	289.3
Accommodation	66.3	69.3	72.5	71.7	68.1	65.6	63.3	63.0	61.5	60.7	60.1	59.9	61.9
Casino Hotels	38.2	39.3	40.2	39.5	39.2	37.9	37.2	36.2	35.4	34.7	34.5	34.0	34.5
Food Services and Drinking Places	229.0	237.6	231.1	228.9	227.4	222.5	222.9	222.1	214.6	211.9	213.5	215.1	227.4
Full-Service Restaurants	103.1	107.5	108.4	107.8	102.2	98.8	96.7	97.6	95.3	93.3	93.9	95.5	101.9
Limited-Service Eating Places	88.3	91.8	92.6	91.8	87.3	86.1	86.3	84.6	83.2	82.1	83.1	82.8	87.0
Special Food Services	28.3	28.3	20.0	19.2	28.5	28.8	31.1	31.0	27.6	28.0	28.0	28.2	29.5
Drinking Places (Alcoholic Beverages)	9.3	10.0	10.1	10.1	9.4	8.8	8.8	8.9	8.5	8.5	8.5	8.6	9.0
Other Services	167.0	169.6	168.7	167.7	164.4	165.7	161.4	162.1	160.5	161.3	161.1	162.6	165.3
Repair and Maintenance	36.3	36.5	36.2	36.0	35.9	34.7	34.7	34.4	34.6	34.3	34.4	34.2	34.6
Automotive Repair and Maintenance	26.1	26.2	26.0	25.9	25.8	24.9	24.9	23.8	24.1	23.4	23.4	23.3	23.7
Personal and Laundry Services	50.7	51.3	50.8	50.6	50.7	51.4	48.5	49.5	49.9	49.2	49.2	50.5	51.5
Personal Care Services	30.4	30.6	30.2	30.1	30.4	30.2	30.2	30.4	30.1	29.9	30.2	30.6	30.9
Religious, Grantmaking, Civic, Professional & Similar Orgs.	80.0	81.8	81.7	81.1	77.8	79.6	78.2	78.2	76.0	77.8	77.5	77.9	79.2
Government	659.0	662.2	627.5	612.2	633.6	662.5	665.1	663.9	650.7	659.4	661.7	663.7	661.7
Federal Government	59.8	60.2	60.5	60.3	59.6	59.8	58.6	59.1	58.9	58.2	58.2	60.5	60.6
Other Federal Government	17.8	17.9	18.1	18.1	17.8	17.7	17.7	17.8	17.6	17.6	17.7	19.6	20.5
Department of Defense	13.8	14.2	14.1	14.3	14.0	14.2	13.4	13.5	13.6	13.6	13.6	13.7	13.7
U.S. Postal Service	28.2	28.1	28.3	27.9	27.8	27.9	27.5	27.8	27.7	27.0	26.9	27.2	26.4
State Government	154.1	150.4	148.8	146.2	150.5	154.3	153.2	150.4	145.9	149.8	150.4	150.1	147.9
State Government Education	49.8	45.5	44.8	44.0	48.8	52.5	52.2	50.4	45.0	49.1	49.3	49.5	47.0
State Government Hospitals	12.1	12.1	12.0	11.9	11.9	12.1	12.1	12.2	12.2	12.2	12.2	12.2	12.2
Other State Government	92.2	92.8	92.0	90.3	89.8	89.7	88.9	87.8	88.7	88.5	88.9	88.4	88.7
Exec./Leg./Judicial *	79.3	79.4	78.9	77.4	77.1	77.1	76.9	76.8	76.8	76.9	76.9	76.6	76.3
Local Government	445.1	451.6	418.2	405.7	423.5	448.4	453.3	454.4	445.9	451.4	453.1	453.1	453.2
Local Government Education	277.5	276.8	230.2	220.9	250.1	277.1	282.7	283.9	276.8	282.5	285.2	285.2	283.6
Other Local Government	167.6	174.8	188.0	184.8	173.4	171.3	170.6	170.5	169.1	168.9	167.9	167.9	169.6

See notes on page S-23. Shaded rows on pp. 24-27 indicate employment at the NAICS supersector level.

Hours and Earnings Data

Production/Non-supervisory Workers in New Jersey

NAICS Industry	2008					2009					Apr	May	
	May	Jun	Jul	Aug	Sep	Oct	Nov	Dec	Jan	Feb			Mar
Average Weekly Hours of Production / Non-supervisory Workers¹													
Manufacturing (production)	42.2	42.5	41.8	41.6	41.5	40.8	41.1	41.5	41.2	41.2	41.3	40.6	41.3
Durable Goods	42.6	42.9	42.5	42.2	41.8	40.9	41.5	40.9	40.8	41.0	41.0	40.6	40.6
Nondurable Goods	41.8	42.2	41.2	41.0	41.3	40.7	40.8	42.1	41.6	41.4	41.5	40.7	41.9
Information⁴	34.5	35.2	34.5	34.3	34.7	34.6	34.8	34.9	34.4	34.7	34.3	34.4	34.8
Average Hourly Gross Dollar Earnings²													
Manufacturing (production)	17.79	17.83	17.88	17.93	17.99	17.73	17.89	18.37	18.39	18.45	18.52	18.60	18.48
Durable Goods	19.69	19.74	19.68	19.88	19.93	20.17	20.25	21.10	21.10	21.23	21.33	21.32	21.28
Nondurable Goods	16.10	16.10	16.24	16.18	16.29	15.60	15.81	16.10	16.10	16.14	16.12	16.24	16.14
Information⁴	32.67	32.05	31.53	31.52	31.18	30.06	29.86	29.13	28.86	28.60	29.16	28.27	27.97
Average Weekly Gross Dollar Earnings^{3,755.83}													
Manufacturing (production)	750.74	757.78	747.38	745.89	746.59	723.38	735.28	762.36	757.67	760.14	764.88	755.16	763.22
Durable Goods	838.79	846.85	836.40	838.94	833.07	824.95	840.38	862.99	860.88	870.43	874.53	865.59	863.97
Nondurable Goods	672.98	679.42	669.09	663.38	672.78	634.92	645.05	677.81	669.76	668.20	668.98	660.97	676.27
Information⁴	1,127.12	1,128.16	1,087.79	1,081.14	1,081.95	1,040.08	1,039.13	1,016.64	992.78	992.42	1,000.19	972.49	973.36

* Eight manufacturing production series were deleted because these series failed to meet the criteria established by the Bureau of Labor Statistics and will no longer be published.

- (1) Average hours worked or paid are affected by labor turnover, changes in overtime hours and part-time employment.
- (2) Hourly earnings include paid holidays, vacation and sick leave. They are affected by changes in workforce composition and in wage rates.
- (3) Weekly earnings are affected by premium pay, shift differentials, piecework and incentive payments, length of workweek and other factors.
- (4) Non-supervisory workers. The Information Supersector includes the Publishing Industries, Telecommunications, and Internet Service Providers, Web Search Portal, and Data Processing Service Sectors.

Comparative Trends

US and New Jersey Civilian Labor Force Trends 1983-2009 (000)

Date	Labor Force		Employment		Unemployment Volume		Unemployment Rate (%)	
	US	NJ	US	NJ	US	NJ	US	NJ
Annual Averages: 1983-2008								
1983	111,550	3,673.0	100,834	3,385.0	10,717	288.0	9.6	7.8
1984	113,544	3,825.0	105,005	3,589.0	8,539	236.0	7.5	6.2
1985	115,461	3,839.0	107,150	3,621.0	8,312	217.0	7.2	5.7
1986	117,834	3,908.0	109,597	3,712.0	8,237	197.0	7.0	5.0
1987	119,865	3,966.0	112,440	3,806.0	7,425	160.0	6.2	4.0
1988	121,669	3,975.0	114,968	3,824.0	6,701	151.0	5.5	3.8
1989	123,869	3,989.0	117,342	3,826.0	6,528	163.0	5.3	4.1
1990	125,840	4,072.5	118,793	3,865.0	7,047	207.5	5.6	5.1
1991	126,346	4,050.4	117,718	3,776.6	8,628	273.7	6.8	6.8
1992	128,105	4,051.9	118,492	3,709.5	9,613	342.4	7.5	8.4
1993	129,200	4,034.6	120,259	3,727.3	8,940	307.3	6.9	7.6
1994	131,056	4,067.5	123,060	3,790.0	7,996	277.5	6.1	6.8
1995	132,304	4,111.8	124,900	3,846.3	7,404	265.5	5.6	6.5
1996	133,943	4,184.1	126,708	3,925.8	7,236	258.3	5.4	6.2
1997	136,297	4,257.4	129,558	4,031.0	6,739	226.4	4.9	5.3
1998	137,673	4,242.4	131,463	4,047.1	6,210	195.3	4.5	4.6
1999	139,368	4,284.6	133,488	4,092.7	5,880	191.8	4.2	4.5
2000	142,583	4,287.8	136,891	4,130.3	5,692	157.5	4.0	3.7
2001	143,734	4,302.3	136,933	4,117.5	6,801	184.8	4.7	4.3
2002	144,863	4,370.8	136,485	4,117.3	8,378	253.5	5.8	5.8
2003	146,510	4,363.9	137,736	4,108.4	8,774	255.5	6.0	5.9
2004	147,401	4,358.9	139,252	4,144.2	8,149	214.7	5.5	4.9
2005	149,320	4,416.1	141,730	4,218.5	7,591	197.6	5.1	4.5
2006	151,428	4,477.5	144,427	4,269.6	7,001	207.9	4.6	4.6
2007	153,124	4,462.3	146,047	4,271.7	7,078	190.6	4.6	4.3
2008	154,287	4,496.7	145,362	4,251.2	8,924	245.5	5.8	5.5
2008 Monthly Data: 2008-2009 (Seasonally Adjusted)*								
Jan	153,873	4,478.7	146,317	4,272.3	7,555	206.4	4.9	4.6
Feb	153,498	4,483.9	146,075	4,272.1	7,423	211.8	4.8	4.7
Mar	153,843	4,485.5	146,023	4,268.9	7,820	216.6	5.1	4.8
Apr	153,932	4,487.7	146,257	4,265.5	7,675	222.2	5.0	5.0
May	154,510	4,491.3	145,974	4,261.2	8,536	230.1	5.5	5.1
Jun	154,400	4,492.6	145,738	4,256.9	8,662	235.7	5.6	5.2
Jul	154,506	4,497.8	145,596	4,252.6	8,910	245.2	5.8	5.5
Aug	154,823	4,502.1	145,273	4,247.3	9,550	254.8	6.2	5.7
Sep	154,621	4,502.5	145,029	4,241.9	9,592	260.6	6.2	5.8
Oct	154,878	4,507.4	144,657	4,235.6	10,221	271.8	6.6	6.0
Nov	154,620	4,510.4	144,144	4,224.9	10,476	285.5	6.8	6.3
Dec	154,447	4,520.8	143,338	4,215.1	11,108	305.7	7.2	6.8
2009								
Jan	153,716	4,503.0	142,099	4,172.5	11,616	330.5	7.6	7.3
Feb	154,214	4,514.6	141,748	4,144.6	12,467	370.0	8.1	8.2
Mar	154,048	4,540.6	140,887	4,163.8	13,161	376.8	8.5	8.3
Apr	154,731	4,572.4	141,007	4,188.0	13,724	384.4	8.9	8.4
May	155,081	4,560.9	140,570	4,160.3	14,511	400.6	9.4	8.8
Jun								
Jul								
Aug								
Sep								
Oct								
Nov								
Dec								

* New Jersey monthly data are based on a different estimating procedure. Monthly data have been revised to incorporate updated seasonal adjustment factors which reflect the 2008 experience.

Characteristics of New Jersey's Unemployed (000)

	May 2009	April 2009	May 2008	Percent Change From Month Ago	Year Ago
Total Insured Unemployed *	199.8	218.8	108.1	-8.7	84.8
Total Insured Unemployed	223.7	216.8	121.1	3.1	84.7
By Gender					
Male	129.9	121.6	67.4	6.8	92.7
Female	88.2	92.2	53.0	-4.3	66.6
By Race					
White	143.0	132.9	74.1	7.6	93.0
Black	37.0	37.6	25.0	-1.6	48.1
Asian	8.8	8.3	3.6	6.4	146.6
Other	2.2	2.1	1.2	7.5	85.2
Chose not To Answer	31.2	33.7	16.4	-7.6	89.9
By Ethnicity					
Hispanic	42.0	43.4	23.2	-3.3	81.0
Not Hispanic	147.1	150.3	87.2	-2.2	68.6
Chose not to Answer	21.9	23.0	8.9	-4.4	146.8
By Age of Claimant					
Under 25	20.4	19.7	11.0	3.7	84.7
25 through 34 years	49.4	47.7	27.7	3.7	78.6
35 through 44 years	47.6	48.1	28.2	-1.2	68.4
45 through 54 years	53.8	51.4	28.5	4.7	88.5
55 through 64 years	35.9	34.1	18.0	5.4	99.3
65 years and over	14.0	13.5	7.2	3.9	93.8
43.3By Duration of Unemployment 83.0					
11.01 to 2 weeks	30.0	31.5	20.0	-4.7	50.0
3 to 4 weeks	21.5	23.3	15.0	-7.8	43.3
5 to 14 weeks	92.6	91.9	50.6	0.7	83.0
15 weeks and over	73.8	65.7	35.0	12.3	111.0
By Industry					
Goods Producing	47.5	48.5	24.7	-2.2	92.0
Construction	24.3	23.9	14.2	1.5	70.7
Manufacturing	22.4	23.8	10.0	-5.9	124.1
Service Providing	167.2	170.1	95.5	-1.7	75.1
Trade, Transportation, Utilities	49.1	50.9	26.1	-3.6	88.0
Wholesale Trade	13.1	12.7	6.4	3.7	104.2
Retail Trade	25.0	24.9	13.6	0.7	84.7
Transportation & Warehousing	10.8	13.3	6.0	-18.7	78.8
Financial Activities	12.6	12.1	7.1	3.9	77.0
Professional & Business Services	38.3	37.7	20.9	1.4	83.2
Educational and Health Services	17.6	17.6	12.6	-0.1	39.7
Leisure and Hospitality	19.1	19.2	11.0	-0.4	72.9
Other Services	4.8	4.9	2.9	-1.7	63.8
Government	3.8	3.4	2.6	13.1	45.6

Notes: Totals may not add due to seasonal adjustment, rounding and differences in the availability of data.
 * Not seasonally adjusted

Statistical Section Notes

Adjustment of Data

Seasonal Adjustment. All tables/charts, unless otherwise specified, contain data that are seasonally adjusted using the **X-12 ARIMA** (Auto-Regressive Integrated Moving Average) method of seasonal adjustment developed by Statistics Canada.

The **X-12** procedure was used in a “two-step” process. One set of factors was generated for benchmarked estimates, based on absolute or universe counts of employment determined through Unemployment Insurance records. These factors were used to seasonally adjust historical, universe-based data through September 2007. A second set of factors was generated using the record of sample-based estimates, and applied to reprojected sample-based estimates for the last quarter of 2007 and sample-based estimates developed month by month in 2008.

Annual Revision and Internet Access

Annual revisions of the data series in *Economic Indicators* normally incorporate:

- (1) the latest benchmark — 2008 for the Resident Labor Force Indicators (Series 1-6) and 2008 for Establishment Employment Indicators (Series 7-16).
- (2) new seasonal adjustment factors, which usually affect at least five years of seasonally adjusted data, or the period from January 2004 forward.

Internet Access: Available on the Labor Planning & Analysis (LPA) Web site, <http://lwd.dol.state.nj.us/labor/lpa>, are:

- (1) the current month's *Economic Indicators* issue.
- (2) historical series when available, January 1976 to December 2008. This includes the latest annual revisions to unadjusted nonfarm data (January 2006 to December 2008) and seasonal adjustment revisions (January 2004 to December 2008). Because revisions can affect various multi-year periods of original and seasonally adjusted data, it would be incorrect to generate a historic time series for *Economic Indicators* data by tying together series from old issues. For example, seasonally adjusted data from January 2005 to December 2009 are subject to change during the next annual revision cycle.

General Notes

Annual Averages. On p. S-20 are the annual averages of the of the data series for recent years to be used as a benchmark for evaluating current monthly data.

Charts. Unless otherwise noted, all graphs were developed with seasonally adjusted data.

Moving Averages. Series where the monthly data vary erratically have been plotted with moving averages (thick line) and nonaveraged data (thin line) superimposed.

Scales. The scale of each series is determined by the volume and trend of the data series. Caution should be exercised in making comparisons among charts of different scales.

Shaded Columns. Shaded areas indicate periods of general national contraction as identified by the National Bureau of Economic Research (NBER). The July 1990-March 1991 and the March 2001-November 2001 national recessions are shown in the graphs for Series 1-27.

Tables. Revised data are indicated by an “R” after the entry.

Statistical Section Notes (cont.)

Data Sources for Economic Time Series 1-27

No.	Title	Data Source
1	Civilian Labor Force	NJ Department of Labor and Workforce Development, Division of Labor Market and Demographic Research
2	Resident Employment	
3	Unemployment	
4	Labor Force Participation Rate	
5	Employment/Population Ratio	
6	Unemployment Rate	
7	Nonfarm Payroll Employment	
8	Private Sector Nonfarm Payroll Employment	
9	Construction Payroll Employment	
10	Manufacturing Payroll Employment	
11	Trade, Transportation and Utilities Payroll Employment	
12	Information Payroll Employment	
13	Financial Activities Payroll Employment	
14	Professional and Business Services Payroll Employment	
15	Education and Health Services Payroll Employment	
16	Leisure and Hospitality Payroll Employment	
17	CPI for All Urban Consumers (CPI-U)	US Bureau of Labor Statistics
18	Consumer Confidence Index for Middle Atlantic Region	The Conference Board
19	Total Private Dwelling Units Auth. by Bldg. Permits	US Bureau of the Census, Manufacturing and Construction Division
20	Priv. Single-Fam. Dwelling Units Auth. by Bldg. Permits	
21	Priv. Multi-Fam. Dwelling Units Auth. by Bldg. Permits	
22	Total New Vehicle Registrations	R.L. Polk and Company
23	New Passenger Car Registrations	
24	New Light Truck/Van Registrations	
25	Weeks Claimed and Insured Unemployment Rate	NJ Department of Labor and Workforce Development, Division of Program Planning, Analysis and Evaluation
26	Initial Claims - Weekly Averages	
27	Unemployment Insurance Exhaustions	

Data Sources for Economic Time Series 1-27

1-6 **Resident Labor Force Indicators** are produced using a modeling procedure based on regression techniques, that allows for the construction of error ranges. This procedure includes data variables from the NJ Department of Labor & Workforce Development's monthly Current Employment Statistics (CES) survey, unemployment insurance claims data and responses from the US Bureau of Labor Statistics' Current Population Survey (CPS) of 1,500 households in New Jersey. A new method was introduced effective with January 2005 estimates. Data are available monthly back to 1976.

Beginning with 1990, data incorporate 2000 census-based population controls as well as improved estimates of immigration, emigration, births and deaths for the state and are not directly comparable to earlier figures.

The **Labor Force Participation Rate** and the **Employment/Population Ratio** (Series 4 and 5) are expressed as percentages of the civilian noninstitutional population aged 16 years and over.

7-16 The **Establishment Employment Indicators** are generated from the monthly CES survey of employers on the number of persons who worked or received pay for any part of the pay period including the 12th of the month.

Data reflect March 2008 benchmarks.

Statistical Section Notes (cont.)

Seasonally adjusted data for Series 7-16 have been revised back to January 2004.
Not seasonally adjusted data have been revised back to 2006.

Private Sector Nonfarm Payroll Employment (Series 8) is computed by subtracting government employment from total nonfarm employment.

Standard errors have been computed to estimate the variance of total private sector employment and for all supersector series statewide, as well as for total private sector employment for Metropolitan Statistical Areas. More detailed information is available at lwd.dol.state.nj.us/labor/lpa under "Employment & Wages". Please see the technical note on sample variance.

- 17 The **Consumer Price Index for All Urban Consumers (CPI-U)** is a measure of the average change over time in the prices paid by all urban consumers (excluding military personnel and persons in institutions) for a fixed market basket of consumer goods and services. The month-to-month change in the CPI is a measure of inflation. Beginning with January 2007, monthly data is reported out to three decimal points.

The **CPI-U** represents approximately 87% of the total population. The **US CPI-U** is the US City Average. The **US CPI-U** and **Metro Area CPI-U** (see definitions below) are not seasonally adjusted.

The CPI does not measure the relative cost of living between areas. There is no "New Jersey CPI". The division of New Jersey's 21 counties between two metropolitan areas for which CPIs are calculated is defined below.

Internet: US Bureau of Labor Statistics Web site may be accessed at <http://www.bls.gov/data/top20.htm> for all regional and national CPI data.

Metro Area definitions:

"NY" designates the *New York-Northern New Jersey - Long Island, NY-NJ-CT-PA area*. In New Jersey this includes Bergen, Essex, Hudson, Hunterdon, Mercer, Middlesex, Monmouth, Morris, Ocean, Passaic, Somerset, Sussex, Union and Warren counties. In New York, it includes New York City (5 counties), Dutchess, Nassau, Orange, Putnam, Rockland, Suffolk and Westchester counties. In Connecticut, it includes Fairfield and New Haven counties, plus parts of Litchfield and Middlesex counties. In Pennsylvania, it includes Pike County. Data are published monthly.

"PA" designates the *Philadelphia-Wilmington-Atlantic City, PA-NJ-DE-MD area*. In New Jersey this includes Atlantic, Burlington, Camden, Cape may, Cumberland, Gloucester, and Salem Counties. In Pennsylvania, it includes Bucks, Chester, Delaware, Montgomery and Philadelphia counties. In Delaware, it includes New Castle County, and in Maryland, Cecil County. Data are published bi-monthly.

- 18 **Consumer Confidence Index (CCI), Middle Atlantic Region (US 1985=100)** is based on a representative, random sample of 750 (15%) of a total of 5,000 US households surveyed monthly by NFO Research for the Conference Board. The index represents consumers' perceptions of the present general economy, their own financial conditions as well as their short-term (six months) outlook. Economists use the CCI as a leading indicator for consumer spending. The middle Atlantic Region consists of New Jersey, New York and Pennsylvania. Regional data are not seasonally adjusted.

Statistical Section Notes (cont.)

19-21 The **Residential Building Permits Indicators** are compiled by the US Bureau of the Census, Manufacturing and Construction Division as of the thirteenth workday of the following month. Data are collected for all permit-issuing places in the state through a monthly survey of local construction officials. If data are not received for a particular place for that month, the data are imputed. The Census Bureau conducts an annual follow-up to obtain as much data as possible for places for which the data were imputed during the year; these data are then considered to be **FINAL MONTHLY FIGURES**. (Final statewide totals used to produce the annual averages on p. S-22 also include “undistributed” units.) Data beginning January 1998 contain revisions allocated back to prior months and are directly comparable to over-the-year changes shown on the **New Jersey’s Economy by the Numbers** table.

Total Private Dwelling Units Authorized by Building Permits (Series 22) data are the sum of single-family, two-family, three-or-four-family, and five-or-more-family dwelling units. Public housing units are not included in the series and represent a tiny fraction of the total.

Private Multi-Family (5+ units) Authorized by Building Permits (Series 24) include all multi-family structures with five or more units, except those in public housing. Data do not exhibit a stable seasonal pattern and are, therefore, not appropriate for seasonal adjustment.

22-24 These series on **New Passenger Car & New Light Truck/Van Registrations** present data only on total new passenger cars and total light truck/vans (in the gross vehicle weight class 0-10,000 lbs.) registered in New Jersey, regardless of the state in which the sales occur. Included are both domestically produced and imported vehicles. Excluded are all federal government registrations. Monthly data for current and prior-year are subject to revision.

Because of unemployment insurance (UI) coverage and other law changes affecting eligibility for benefits, data on unemployment insurance claims (Series 25-27) may not be directly comparable between years.

25 **Weeks Claimed (Weekly Average)** is computed by dividing the total number of weeks claimed (intra-state and interstate agent under the Regular State UI Program only) in the month by the number of weeks in the month.

The **Insured Unemployment Rate (IUR)** is the seasonally adjusted weekly average of weeks claimed (intrastate and interstate agent claims under the Regular State UI Program only), which is a proxy for a count of claimants, as a percent of employment covered by unemployment insurance.

26 The **Initial Claims Weekly Average** represents intrastate and interstate agent claims under the Regular State UI program only.

27 **Unemployment Insurance Exhaustions** are for the Regular State UI Program only.