

Regional Focus: South Jersey

Data and analysis for the Atlantic City-Hammonton, Camden, Ocean City, and Vineland-Bridgeton labor areas

(Atlantic, Burlington, Camden, Gloucester, Cape May, and Cumberland counties)

South Jersey Employment Advances Over the Year

From June 2017 to June 2018, the Southern Region added an estimated 12,500 jobs based on not seasonally adjusted estimates. Rising to a June 2018 level of 809,900, area employers experienced a payroll increase of 1.6 percent while the state gained jobs (+55,00) at a slower rate (+1.3%). The region's job growth contributed 22.6 percent of the state's jobs gain over the year.

The regional job gains occurred in the professional and business services (+3,300 or +3.4%), trade, transportation and utilities (+3,000 or +1.8%), educational and health services (+2,600 or +1.9%), manufacturing (+2,400 or +4.8%), government (+800 or +0.7%), and leisure and hospitality (+300 or +0.3%) sectors. Financial activities (-900 or -2.5%), construction (-600 or -1.9%) and other services (-100 or -0.4%) experienced losses in staffing levels in the southern region since June 2017.

The state posted significant job gains in the trade, transportation and utilities (+18,700 or +2.1%), professional and business services (+18,300 or +2.7%), education and health services (+13,100 or +1.9%), manufacturing (+8,000 or +3.2%) and the leisure and hospitality (+4,300 or +1.0%) sectors. Trade, transportation and utilities was up due to an increase in warehousing and storage (+13,200 or +27.5%). Amazon's expanding presence in the state is one contributor to the job gain in this industry. Advances in professional and business services were aided by gains in the administrative and support services (+16,200 or +5.5%) industry. Construction (-5,000 or -3.1%), financial activities (-2,400 or -0.9%) and information (-1,000 or -1.4%) shed jobs over the year.

Camden Labor Area Posts Notable Gain in Transportation and Warehousing

Among the region's labor areas jobholding expanded in Camden (Burlington, Camden and Gloucester counties; +10,400 jobs or +1.9%), Atlantic City (Atlantic County; +2,500 or +1.9%), and Vineland-Bridgeton (Cumberland County; +600 or +1.0%). Employment was down in the Ocean City Labor Area (Cape May County; -1,000 or -1.8%).

During the period jobholding in the Camden Labor Area rose to a June 2018 level of

Change in Nonfarm Employment June 2017 - June 2018 final (not seasonally adjusted, 2017 benchmark)

	Region		State	
	Net	%	Net	%
Total Nonfarm Employment	12,500	1.6	55,400	1.3
Private Sector	11,700	1.7	54,800	1.5
Construction ¹	-600	-1.9	-5,000	-3.1
Manufacturing ¹	2,400	4.8	8,000	3.2
Trade, Trans. & Utilities	3,000	1.8	18,700	2.1
Information ¹	0	0.0	-1,000	-1.4
Financial Activities ¹	-900	-2.5	-2,400	-0.9
Prof. & Business Svcs. ¹	3,300	3.4	18,300	2.7
Ed. & Health Svcs.	2,600	1.9	13,100	1.9
Leisure & Hospitality	300	0.3	4,300	1.0
Other Services ¹	-100	-0.4	800	0.4
Government	800	0.7	600	0.1

Source: NJLWD, Current Employment Statistics

¹Employment does not include data for Cape May County



Regional Focus is a quarterly publication of the New Jersey Department of Labor and Workforce Development, Division of Workforce Research and Analytics. For questions regarding the material in this publication contact Michael Dugan at (609)633-6425 or email michael.dugan@dol.nj.gov

To subscribe to this publication email njsdc@dol.nj.gov with "regional focus" in the subject line.



562,200. Notable employment growth occurred in the trade, transportation and utilities (+4,700 or 3.9%), professional and business services (+2,900 or +3.5%), manufacturing (+2,100 or +5.6%), education and health services (+1,300, 1.3%) and government (+1,200 or +1.5%) sectors. Gains in trade, transportation and utilities were listed in the transportation, warehousing, and utilities (+3,700 or +16.2%) and retail (+800 or +1.2%) industries. Manufacturers added jobs in both the durable goods (+1,400 or +6.5%) and non-durable goods (+700 or +4.3%) segments. The largest job detractor was construction where payrolls were lessened by 1,600 or 6.8 percent.

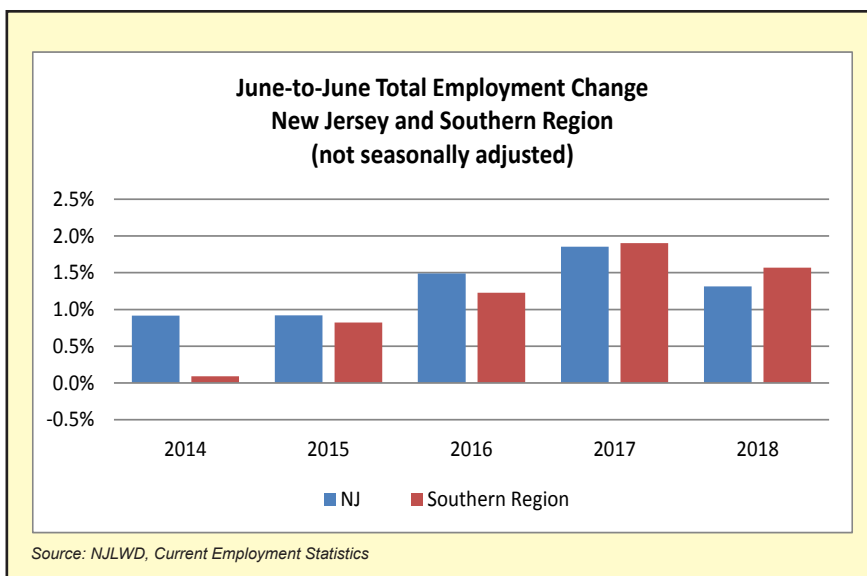
In the Atlantic City Labor Area, total nonfarm payroll jumped to an estimated 133,900 over the same month a year ago. The most notable increase occurred in leisure and hospitality (+800 or +2.1%) where casino hotels was up by 1,400 jobs or 7.0 percent due to the late June 2018 openings of Ocean Resort (formerly Revel) and Hard Rock (formerly Taj Mahal) casinos. Jobholding also increased in construction (+800 or +14.3%), education and health services (+800 or +3.8%), professional and business services (+400 or +3.7%), and manufacturing (+200 or +9.1%). On the downside, trade, transportation and utilities declined (-400 or -1.8%) with losses concentrated in retail trade (-500 or -3.0%).

Total nonagricultural employment in the Ocean City Labor Area was 53,400 in June 2018 with estimates showing decreased payrolls in leisure and hospitality (-1,500, -7.8%) due to a decline in accommodation and food services (-900 or -5.7%). Gains occurred in the goods-producing sector (+400 or +10.8%) as well as education and health services (+300 or +6.5%).

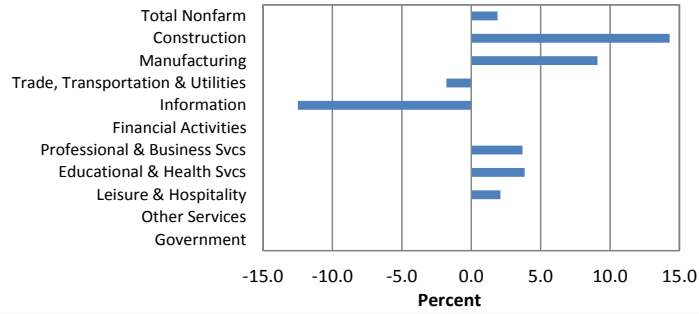
Total nonfarm payrolls in the Vineland-Bridgeton Labor Area reached an estimated 60,400 jobs over the period. Leisure and hospitality led the way by adding 300 jobs or 7.7 percent. The goods-producing sector boosted its staffing levels in both of its industry segments with construction (+300 or +2.4%) and manufacturing (+100 or +1.1%) each adding jobs.

Total Nonfarm Employment (unadjusted June data, employment in thousands)						
	2013	2014	2015	2016	2017	2018
New Jersey	4,008.2	4,044.9	4,082.1	4,143.0	4,219.8	4,275.2
Southern Region	766.0	766.7	773.0	782.5	797.4	809.9
Atlantic City-Hammonton Labor Area (Atlantic County)	140.0	138.9	133.3	132.8	131.4	133.9
Camden Labor Area (Burlington, Camden, Gloucester counties)	516.9	517.3	528.1	538.4	551.8	562.2
Ocean City Labor Area (Cape May County)	51.1	52.1	52.4	52.0	54.4	53.4
Vineland-Bridgeton Labor Area (Cumberland County)	58.0	58.4	59.2	59.3	59.8	60.4

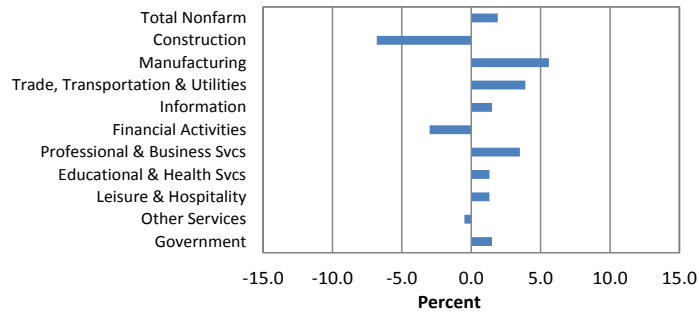
Source: NJLWD, Current Employment Statistics



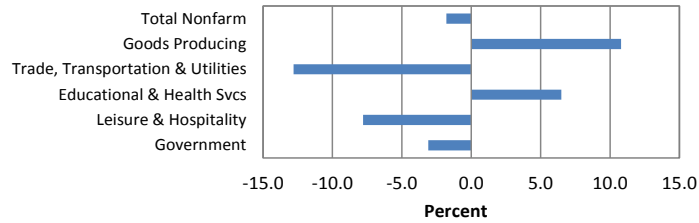
**Employment Change by Industry, June 2017 - June 2018
Atlantic City Labor Area (not seasonally adjusted)**



**Employment Change by Industry, June 2017 - June 2018
Camden Labor Area (not seasonally adjusted)**

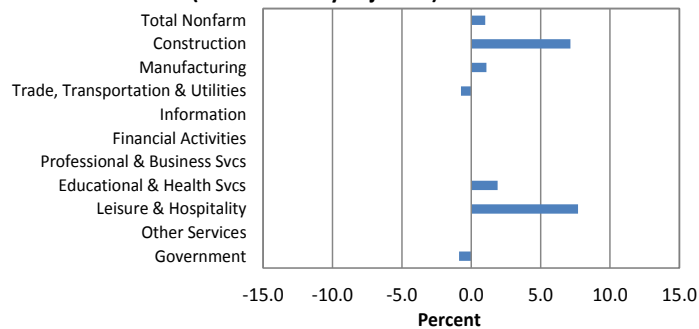


**Employment Change by Industry, June 2017 - June 2018
Ocean City Labor Area (not seasonally adjusted)**



Note: A complete breakout of employment data by industry is not produced for the Ocean City Labor Area due to guidelines from the Bureau of Labor Statistics.

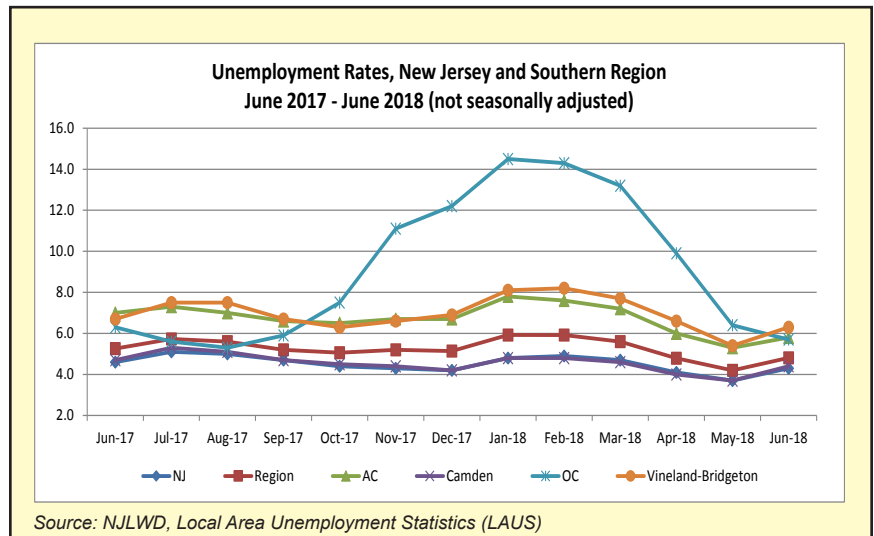
**Employment Change by Industry, June 2017 - June 2018
Vineland-Bridgeton Labor Area
(not seasonally adjusted)**



Source: NJLWD, Current Employment Statistics

LABOR FORCE DATA

- The Southern Region's not seasonally adjusted unemployment rate was 4.5 percent in June 2018, down by 0.8 percentage point from June 2017. In comparison, the state's June 2018 unadjusted unemployment rate was 4.3 percent and was lower by 0.3 percentage point from the same month a year ago.
- Among the counties, Burlington (3.9%) and Gloucester (4.4%) had the lowest unemployment rates in the Southern Region. Cumberland County (6.3%), Cape May County (5.9%), Atlantic County (5.8%), and Salem County (5.6%) all had unadjusted unemployment rates above 5.0 percent.



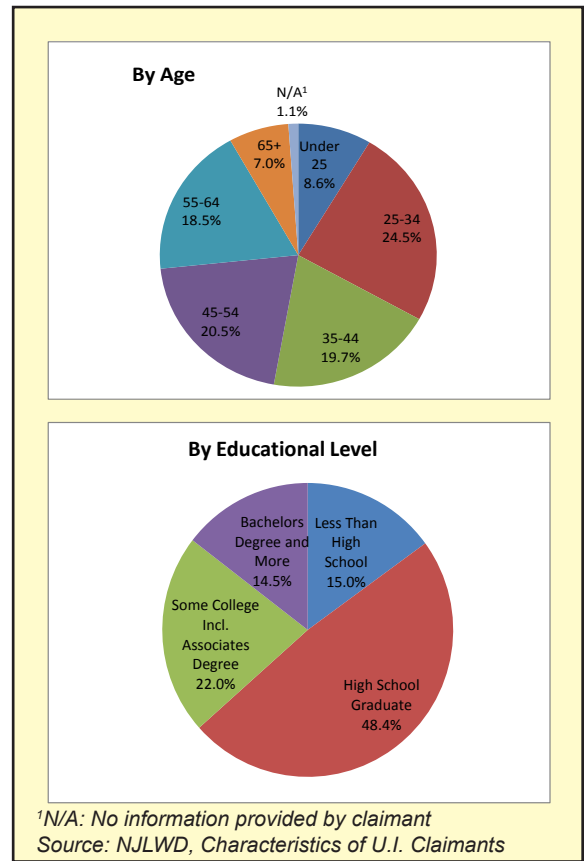
More detailed data from the Local Area Unemployment Statistics (LAUS) program can be found at: http://nj.gov/labor/lpa/employ/uirate/lfest_index.html

CHARACTERISTICS OF NEW JERSEY'S INSURED UNEMPLOYED SOUTHERN REGION, SECOND QUARTER 2018

CLAIMANTS BY OCCUPATIONAL GROUP

	Number	Percent
Management	2,819	6.8
Business and financial	1,406	3.4
Professional and related	3,903	9.4
Services	9,441	22.8
Sales and related	2,871	6.9
Office and administrative support	4,987	12.1
Farming, fishing and forestry	443	1.1
Construction and extraction	4,521	10.9
Installation, maintenance and repair	1,600	3.9
Production	3,443	8.3
Transportation and material moving	5,739	13.9
Military	137	0.3

- During the second quarter of 2018, there were 41,327 residents claiming unemployment insurance benefits in the Southern Region. This represented 25.3 percent of claimants statewide. Regional claims activity was down by 4,086 claims or 9.0 percent from the same quarter a year ago. Statewide, claims activity declined by 9,971 or 5.8 percent since the second quarter of 2018.



REGIONAL JOB OUTLOOK APRIL 2018 - JUNE 2018

The New Jersey Department of Labor and Workforce Development through its agreement with Burning Glass Technologies is able to provide the the following labor market information aggregated from online employer job listings during the quarter. This data provides valuable insight regarding current demand for characteristics such as skills and educational requirements. Note that this data is not meant to represent all available employment opportunities but rather should be viewed in terms of analysis of labor market demand.

JOB LISTINGS BY COUNTY

County	Listings
Camden	11,148
Burlington	10,132
Gloucester	4,857
Atlantic	3,591
Cumberland	1,275
Cape May	786
Salem	686

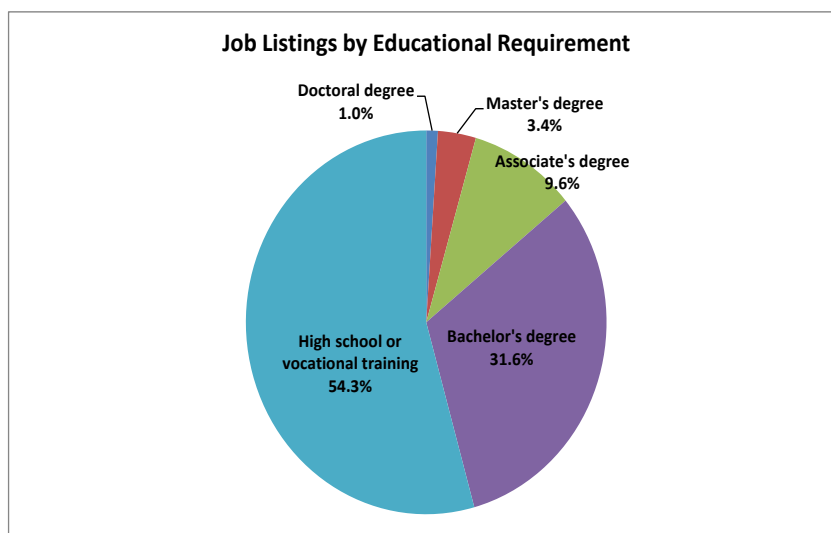
INDUSTRIES WITH THE MOST JOB LISTINGS

Industry	Listings
Food Services and Drinking Places	1,761
Hospitals	1,508
Educational Services	1,485
Administrative and Support Services	1,198
Ambulatory Health Care Services	1,171
Truck Transportation	1,095
Professional, Scientific, and Technical Services	1,048
General Merchandise Stores	1,019
Credit Intermediation and Related Activities	1,014
Accommodation	901
Insurance Carriers and Related Activities	576
Nursing and Residential Care Facilities	536

During the second quarter of 2018, Southern Region employers in the food services and drinking places, hospitals, educational services, administrative and support services, and ambulatory health care services industries exhibited the most labor demand based on online job listing activity.

Concentrated in the region's two most populous counties, Camden and Burlington, employers indicated they were interested in filling positions for retail salespersons, tractor trailer drivers, registered nurses, wholesale sales representatives, and customer service representatives. Skills that were actively sought by area employers included customer service, sales, scheduling, retail industry knowledge, and repair.

Of those job listings for which educational requirements are advertised, more than half require only a high school degree or vocational training.



OCCUPATIONS WITH THE MOST LISTINGS

Occupation	Listings
Retail Salespersons	1,393
Heavy and Tractor-Trailer Truck Drivers	1,362
Registered Nurses	1,288
Sales Representatives, Wholesale and Manufacturing, Except Technical and Scientific Products	927
Customer Service Representatives	781
First-Line Supervisors of Retail Sales Workers	776
Laborers and Freight, Stock, and Material Movers, Hand	572
Managers, All Other	489
Software Developers, Applications	419
Combined Food Preparation and Serving Workers, Incl. Fast Food	415
Secretaries and Administrative Assistants, Except Legal, Medical, and Executive	400
Maintenance and Repair Workers, General	364

TOP SKILLS IN DEMAND

Skill	Listings
Customer Service	5,560
Sales	3,983
Scheduling	3,059
Retail Industry Knowledge	2,234
Repair	2,102
Customer Contact	2,008
Cleaning	1,563
Budgeting	1,493
Lifting Ability	1,285
Teaching	1,255
Patient Care	1,232
Product Sales	1,117

**EMPLOYERS WITH SIGNIFICANT
JOB LISTING ACTIVITY**

Employer	Listings
TD Bank	444
Virtua Health	406
Caesar's Entertainment	361
Cooper University Health Care	333
Atlanticare	326
Lowe's Companies, Inc	284
Bayada Home Health Care	275
Cooper University Hospital	273
Cooper Health System Center For Allied Health Education	220
Kennedy Health System	203
Applebee's Neighborhood Grill & Bar	198
Varsity Tutors	198

Source: Burning Glass Technologies, Labor Insight

Prepared by: New Jersey Department of Labor and Workforce Development, Bureau of Labor Market Information

This workforce product was funded by a grant awarded by the U.S. Department of Labor's Employment and Training Administration. The product was created by the grantee and does not necessarily reflect the official position of the U.S. Department of Labor. The Department of Labor makes no guarantees, warranties, or assurances of any kind, express or implied, with respect to such information, including any information on linked sites and including, but not limited to, accuracy of the information or its completeness, timeliness, usefulness, adequacy, continued availability, or ownership. This product is copyrighted by the institution that created it. Internal use by an organization and/or personal use by an individual for non-commercial purposes is permissible. All other uses require the prior authorization of the copyright owner.