



State of New Jersey

03-2200-050
 HO HO KUS
 70 LLOYD ROAD
 HO HO KUS, NJ 07423

OVERVIEW

BERGEN
 HO HO KUS BORO

GRADE SPAN PK-08

This school's academic performance is **very high when compared** to schools across the state. Additionally, its academic performance is **high when compared** to its peers. This school's college and career readiness is **very high when compared** to schools across the state. Additionally, its college and career readiness is **high when compared** to its peers. This school's student growth performance is **about average when compared** to schools across the state. Additionally, its student growth performance **lags in comparison** to its peers.

Performance Areas	Peer Rank (Percentile)	Statewide Rank (Percentile)	Percent of Targets Met
Academic Achievement	77	94	100%
College and Career Readiness	64	80	100%
Student Growth	21	43	100%

Improvement Status

N/A

Rationale

N/A

Very High Performance is defined as being equal to or above the 80.0th percentile.

High Performance is defined as being between the 60.0th and 79.9th percentiles.

Average Performance is defined as being between the 40.0th and 59.9th percentiles.

Lagging Performance is defined as being between the 20.0th and 39.9th percentiles.

Significantly Lagging Performance is defined as being equal to or below the 19.9th percentile.

Peer Schools are schools that have similar grade levels and students with similar demographic characteristics, such as the percentage of students qualifying for Free/Reduced Lunch, Limited English Proficiency programs or Special Education programs.

Academic Achievement

This school outperforms **94%** of schools statewide as noted by its statewide percentile ranking and **77%** of schools educating students with similar demographic characteristics as noted in its peer school percentile ranking in the performance area of Academic Achievement. Additionally, this school is meeting **100%** of its performance targets in the area of Academic Achievement.



Academic Achievement measures the content knowledge students have in language arts literacy and math. For elementary and middle schools, this includes measures of the school's proficiency rate on both the Language Arts Literacy and Math sections of the New Jersey Assessment of Skills and Knowledge (NJ ASK). A proficiency rate is calculated by summing the count of students who scored either proficient or advanced proficient on the assessment and dividing by the count of valid test scores.

College and Career Readiness

This school outperforms **80%** of schools statewide as noted by its statewide percentile ranking and **64%** of schools educating students with similar demographic characteristics as noted in its peer school percentile ranking in the performance area of College and Career Readiness. Additionally, this school is meeting **100%** of its performance targets in the area of College and Career Readiness.



College and Career readiness measures the degree to which students are demonstrating behaviors that are indicative of future attendance and/or success in college and careers. For all elementary and middle schools, this includes a measurement of how many students are chronically absent. For schools with middle school grades, it also includes a measurement of how many students take Algebra I in either seventh or eighth grade.

Student Growth

This school outperforms **43%** of schools statewide as noted by its statewide percentile ranking and **21%** of schools educating students with similar demographic characteristics as noted in its peer school percentile ranking in the performance area of Student Growth. Additionally, this school is meeting **100%** percentage of its performance targets in the area of Student Growth.



Student Growth measures the performance of students from one year to the next on the New Jersey Assessment of Skills and Knowledge (NJ ASK) in Language Arts Literacy and Math when compared to students with a similar history of performance on NJ-ASK.



State of New Jersey

03-2200-050

HO HO KUS

70 LLOYD ROAD

HO HO KUS, NJ 07423

DEMOGRAPHIC INFORMATION

BERGEN

HO HO KUS BORO

GRADE SPAN PK-08

Enrollment by Grade

This graph presents the count of students who were 'on roll' by grade in October of each school year.

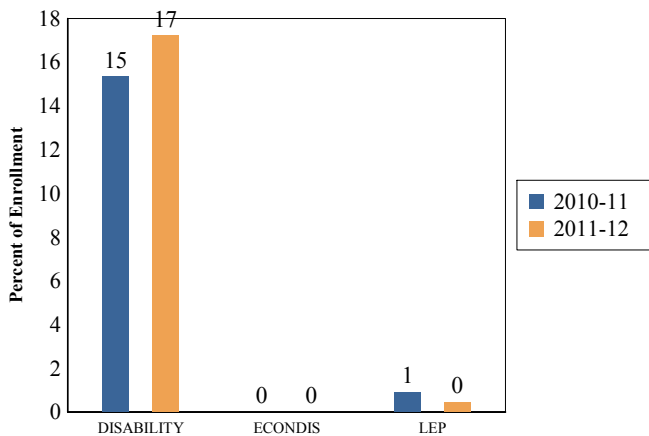


Total School Enrollment Trends

Note: "UG" represents the count of students who are 'on roll' in this school but who are educated in ungraded classrooms, meaning that the classrooms may contain students from multiple grade levels.

Total School Enrollment	
2010-11	659
2011-12	650

Enrollment Trends by Program Participation



Current Year Enrollment by Program Participation

2011-2012	Count of Students	% of Enrollment
Students with Disability	112	17%
Economically Disadvantaged Students	0	0.0%
Limited English Proficient Students	3	0.5%

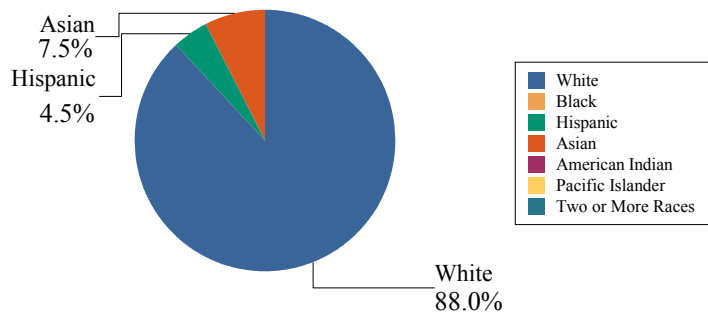
Language Diversity

This table presents the percentage of students who primarily speak each language in their home.

2011-12	Percent
English	91.0%
Spanish	2.6%
Korean	1.1%
Chinese	0.9%
Lithuanian	0.5%
Japanese	0.5%
Other	3.5%

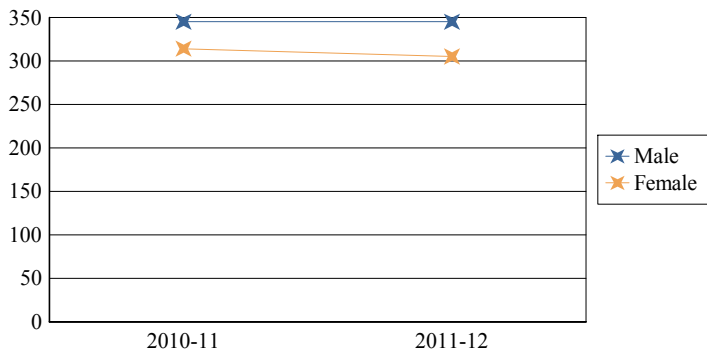
Enrollment by Ethnic/Racial Subgroup

This graph presents the percentages of enrollment for each subgroup defined by the No Child Left Behind Act of 2001



Enrollment by Gender

This graph presents the count of students by gender who were 'on roll' in October of each school year.



	Male	Female
2010-11	345	314
2011-12	345	305



State of New Jersey

03-2200-050
 HO HO KUS
 70 LLOYD ROAD
 HO HO KUS, NJ 07423

ACADEMIC ACHIEVEMENT

BERGEN

HO HO KUS BORO

GRADE SPAN PK-08

Academic Achievement measures the content knowledge students have in language arts literacy and math. In elementary and middle school, this includes the outcomes of the New Jersey Assessment of Skills and Knowledge (NJASK). The first column - Schoolwide Performance - in the table below includes measures of the total schoolwide proficiency rate in both language arts literacy and math across multiple administrations of the assessment. The second column - Peer School Percentile Rank - indicates where the school's proficiency rate compares to its group of peer schools. For example, a school that has a peer school percentile rank of 65 has a proficiency rate that is higher than 65% of its peer schools. The third column - Statewide Percentile Rank - indicates where the school's proficiency rate compares to schools across the state. For example, a school that has a statewide percentile rank of 30 has a proficiency rate that is higher than 30% of all schools with HSPA scores statewide. The last column - Percent of Targets Met - presents the percentage of progress targets met as defined by the NJDOE's NCLB waiver.

The Summary row presents the averages of the peer school percentile ranks, the average of statewide percentile ranks and the percentage of statewide targets met.

Academic Achievement Indicators	Schoolwide Performance	Peer Rank (Percentile)	State Rank (Percentile)	Percent of Targets Met
NJASK Language Arts Proficiency and above	88%	60	90	100%
NJASK Math Proficiency and above	95%	93	98	100%
SUMMARY - Academic Achievement		77	94	100%

NCLB Progress Targets - Language Arts Literacy

This table presents the Progress Targets as uniquely calculated for each subgroup in each school under NJDOE's NCLB waiver. The methodology - as defined by the United States Department of Education - is calculated so that each subgroup will halve the gap between their 2011 proficiency rate and 100% proficiency by 2017.

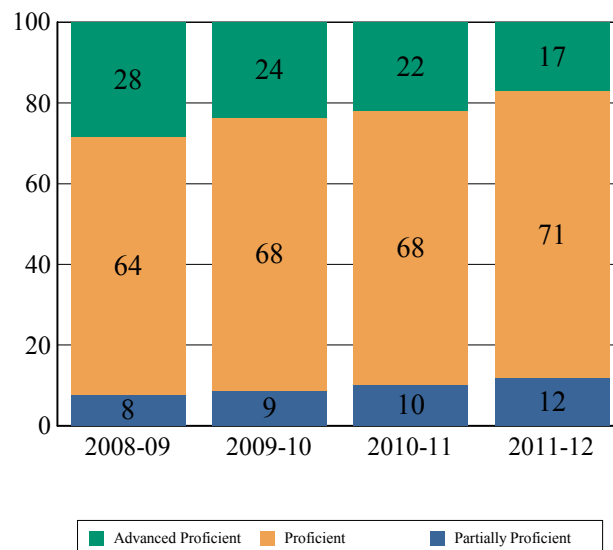
Subgroups	Total Valid Scores	Pass Rate	Target	Met Target?
Schoolwide	409	88.3	90	YES*
White	364	88.2	90	YES*
Black	-	-	-	--
Hispanic	-	-	-	--
American Indian	-	-	-	--
Asian	32	93.8	-	--
Two or More Races	-	-	-	--
Students with Disability	70	64.3	73.2	YES*
Limited English Proficient Students	-	-	-	--
Economically Disadvantaged Students	-	-	-	--

YES* = Met Progress Target(Confidence Interval Applied)

Data is presented for subgroups when the count is high enough under NCLB suppression rules.

Proficiency Trends - Language Arts Literacy

This graph presents the percentage of students who scored in the Advanced Proficient, Proficient and Partially Proficient categories of the statewide Language Arts Literacy assessment over the prior four years.





State of New Jersey

03-2200-050
 HO HO KUS
 70 LLOYD ROAD
 HO HO KUS, NJ 07423

ACADEMIC ACHIEVEMENT

BERGEN
 HO HO KUS BORO

GRADE SPAN PK-08

NCLB Progress Targets - Math

This table presents the Progress Targets as uniquely calculated for each subgroup in each school under NJDOE's NCLB waiver. The methodology - as defined by the United States Department of Education - is calculated so that each subgroup will halve the gap between their 2011 proficiency rate and 100% proficiency by 2017.

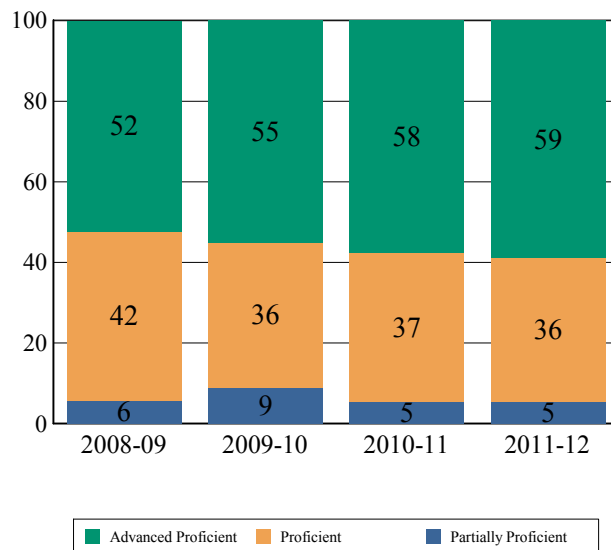
Subgroups	Total Valid Scores	Pass Rate	Target	Met Target?
Schoolwide	409	94.6	90	YES
White	364	94.5	90	YES
Black	-	-		--
Hispanic	-	-		--
American Indian	-	-		--
Asian	32	96.9	-	--
Two or More Races	-	-		--
Students with Disability	70	85.7	84.7	YES
Limited English Proficient Students	-	-		--
Economically Disadvantaged Students	-	-		--

YES* = Met Progress Target(Confidence Interval Applied)

Data is presented for subgroups when the count is high enough under NCLB suppression rules.

Proficiency Trends - Math

This graph presents the percentage of students who scored in the Advanced Proficient, Proficient and Partially Proficient categories of the statewide Math assessment over the prior four years.





ACADEMIC ACHIEVEMENT

BERGEN

HO HO KUS BORO

GRADE SPAN PK-08

**03-2200-050
HO HO KUS
70 LLOYD ROAD
HO HO KUS, NJ 07423**

NJASK Results - Language Arts Literacy Grade Level - 03

This table presents the grade level proficiency results, as measured by NJASK, in Advanced Proficient, Proficient, and Partially Proficient categories for all appropriate subgroups.

Subgroups	Advanced Proficient	Proficient	Partially Proficient
Schoolwide	11%	80%	9%
White	10%	79%	10%
Black	N/A	N/A	N/A
Hispanic	-	-	-
American Indian	N/A	N/A	N/A
Asian	-	-	-
Two or More Races	N/A	N/A	N/A
Students w/ Disability	8%	62%	31%
Limited English Proficient Students	N/A	N/A	N/A
Economically Disadvantaged Students	N/A	N/A	N/A

Data is presented for subgroups when the count is high enough under NCLB suppression rules.

NJASK Results - Language Arts Literacy Grade Level - 04

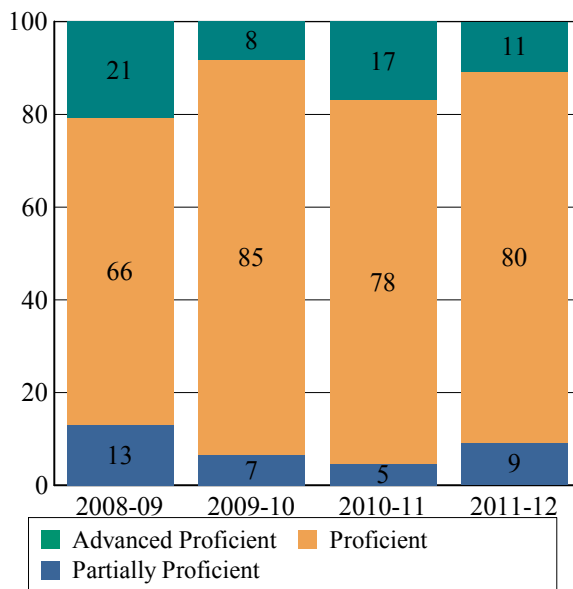
This table presents the grade level proficiency results, as measured by NJASK, in Advanced Proficient, Proficient, and Partially Proficient categories for all appropriate subgroups.

Subgroups	Advanced Proficient	Proficient	Partially Proficient
Schoolwide	8%	73%	20%
White	8%	74%	18%
Black	N/A	N/A	N/A
Hispanic	-	-	-
American Indian	N/A	N/A	N/A
Asian	-	-	-
Two or More Races	N/A	N/A	N/A
Students w/ Disability	8%	42%	50%
Limited English Proficient Students	N/A	N/A	N/A
Economically Disadvantaged Students	N/A	N/A	N/A

Data is presented for subgroups when the count is high enough under NCLB suppression rules.

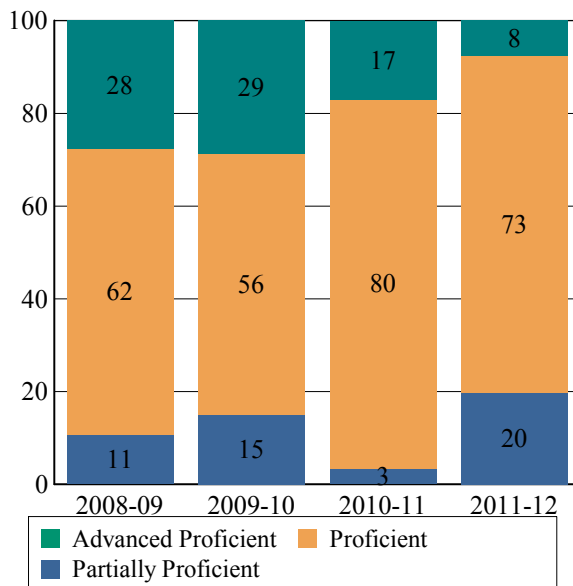
NJASK Proficiency Trends - Language Arts Literacy - Grade Level - 03

This graph presents the grade level outcomes in the categories of Advanced Proficient, Proficient, and Partially Proficient over the last four years.



NJASK Proficiency Trends - Language Arts Literacy - Grade Level - 04

This graph presents the grade level outcomes in the categories of Advanced Proficient, Proficient, and Partially Proficient over the last four years.





ACADEMIC ACHIEVEMENT

BERGEN

HO HO KUS BORO

GRADE SPAN PK-08

**03-2200-050
HO HO KUS
70 LLOYD ROAD
HO HO KUS, NJ 07423**

NJASK Results - Language Arts Literacy Grade Level - 05

This table presents the grade level proficiency results, as measured by NJASK, in Advanced Proficient, Proficient, and Partially Proficient categories for all appropriate subgroups.

Subgroups	Advanced Proficient	Proficient	Partially Proficient
Schoolwide	7%	78%	15%
White	4%	79%	17%
Black	N/A	N/A	N/A
Hispanic	-	-	-
American Indian	N/A	N/A	N/A
Asian	-	-	-
Two or More Races	N/A	N/A	N/A
Students w/ Disability	-	-	-
Limited English Proficient Students	N/A	N/A	N/A
Economically Disadvantaged Students	N/A	N/A	N/A

Data is presented for subgroups when the count is high enough under NCLB suppression rules.

NJASK Results - Language Arts Literacy Grade Level - 06

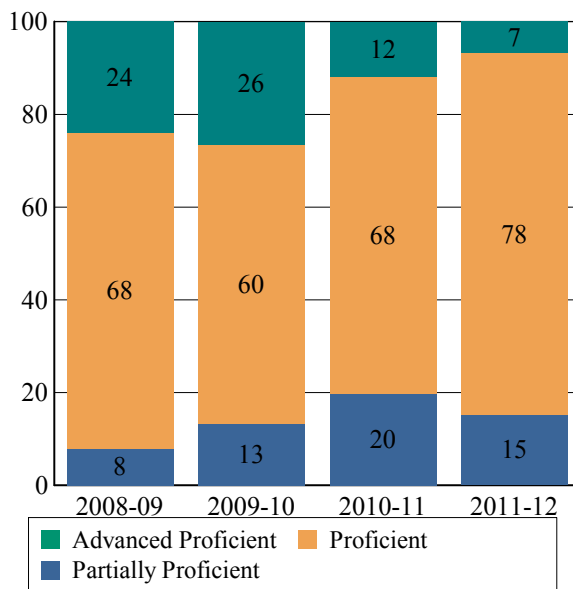
This table presents the grade level proficiency results, as measured by NJASK, in Advanced Proficient, Proficient, and Partially Proficient categories for all appropriate subgroups.

Subgroups	Advanced Proficient	Proficient	Partially Proficient
Schoolwide	14%	74%	12%
White	16%	73%	11%
Black	N/A	N/A	N/A
Hispanic	-	-	-
American Indian	N/A	N/A	N/A
Asian	-	-	-
Two or More Races	N/A	N/A	N/A
Students w/ Disability	0%	58%	42%
Limited English Proficient Students	N/A	N/A	N/A
Economically Disadvantaged Students	N/A	N/A	N/A

Data is presented for subgroups when the count is high enough under NCLB suppression rules.

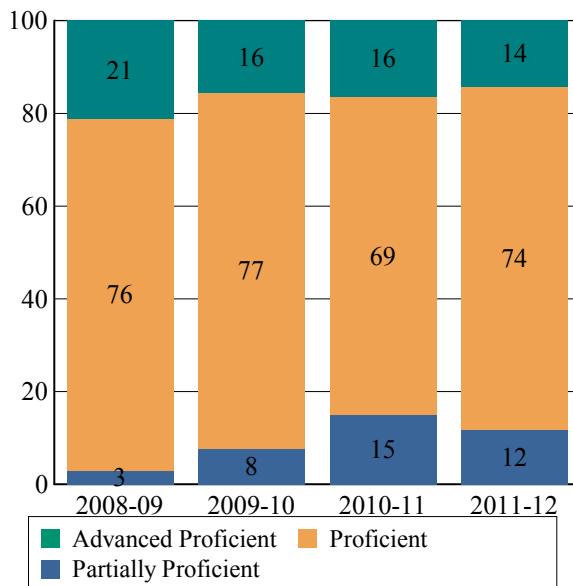
NJASK Proficiency Trends - Language Arts Literacy - Grade Level - 05

This graph presents the grade level outcomes in the categories of Advanced Proficient, Proficient, and Partially Proficient over the last four years.



NJASK Proficiency Trends - Language Arts Literacy - Grade Level - 06

This graph presents the grade level outcomes in the categories of Advanced Proficient, Proficient, and Partially Proficient over the last four years.





ACADEMIC ACHIEVEMENT

BERGEN

HO HO KUS BORO

GRADE SPAN PK-08

**03-2200-050
HO HO KUS
70 LLOYD ROAD
HO HO KUS, NJ 07423**

NJASK Results - Language Arts Literacy Grade Level - 07

This table presents the grade level proficiency results, as measured by NJASK, in Advanced Proficient, Proficient, and Partially Proficient categories for all appropriate subgroups.

Subgroups	Advanced Proficient	Proficient	Partially Proficient
Schoolwide	24%	60%	16%
White	23%	61%	16%
Black	N/A	N/A	N/A
Hispanic	-	-	-
American Indian	N/A	N/A	N/A
Asian	-	-	-
Two or More Races	N/A	N/A	N/A
Students w/ Disability	15%	38%	46%
Limited English Proficient Students	-	-	-
Economically Disadvantaged Students	N/A	N/A	N/A

Data is presented for subgroups when the count is high enough under NCLB suppression rules.

NJASK Results - Language Arts Literacy Grade Level - 08

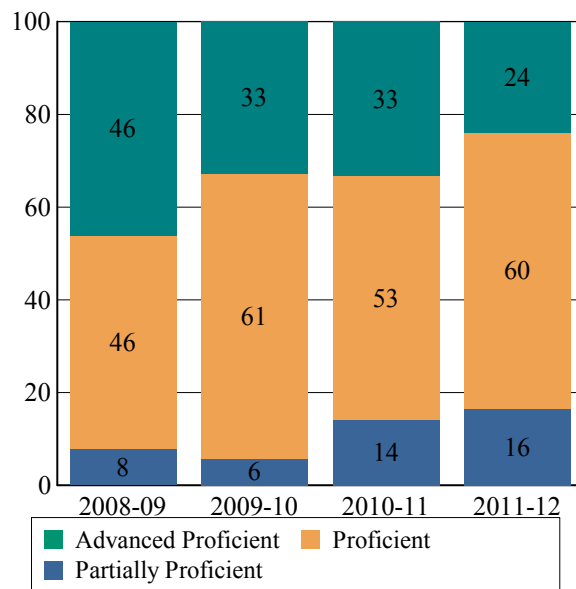
This table presents the grade level proficiency results, as measured by NJASK, in Advanced Proficient, Proficient, and Partially Proficient categories for all appropriate subgroups.

Subgroups	Advanced Proficient	Proficient	Partially Proficient
Schoolwide	35%	65%	0%
White	33%	67%	0%
Black	N/A	N/A	N/A
Hispanic	-	-	-
American Indian	N/A	N/A	N/A
Asian	-	-	-
Two or More Races	N/A	N/A	N/A
Students w/ Disability	-	-	-
Limited English Proficient Students	-	-	-
Economically Disadvantaged Students	N/A	N/A	N/A

Data is presented for subgroups when the count is high enough under NCLB suppression rules.

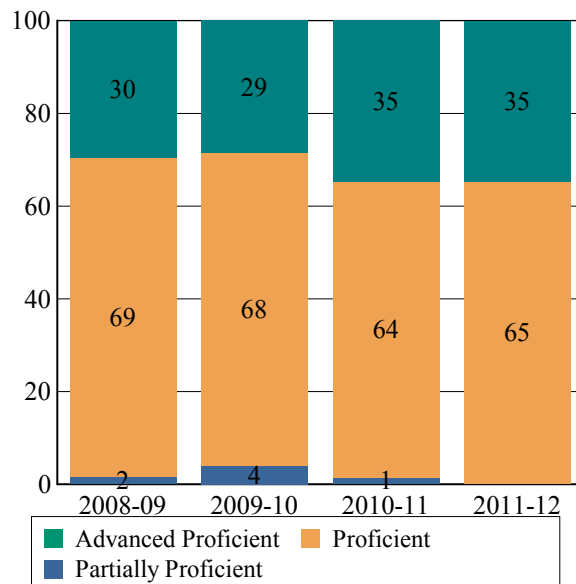
NJASK Proficiency Trends - Language Arts Literacy - Grade Level - 07

This graph presents the grade level outcomes in the categories of Advanced Proficient, Proficient, and Partially Proficient over the last four years.



NJASK Proficiency Trends - Language Arts Literacy - Grade Level - 08

This graph presents the grade level outcomes in the categories of Advanced Proficient, Proficient, and Partially Proficient over the last four years.





ACADEMIC ACHIEVEMENT

BERGEN

HO HO KUS BORO

GRADE SPAN PK-08

2011 National Assessment Educational Progress (NAEP)

The National Assessment of Educational Progress (NAEP) is the largest national assessment of what our nation's students know and can do. NAEP assesses fourth-, eighth-, and twelfth-grade students in subjects such as reading, mathematics, science, and writing. The reporting of NAEP scores on state report cards is a federal mandate. The results of NAEP are also published as the Nation's Report Card, and are available for the nation, states, and, in some cases, urban districts. The NAEP scores on the report card include grades four and eight 2011 reading and math scores for New Jersey which are the last scores published. For subgroup outcomes, visit :

<http://www.nj.gov/education/pr/2013/naep/naep4read.html>

For more information, visit <http://nces.ed.gov/nationsreportcard/>

Proficiency Percentages

Grade 4 Reading	State/Nation	Below Basic	Basic	Proficient	Advanced
All Students	State (NJ)	21.9	34.2	32.5	11.4
All Students	Nation	33.8	33.8	24.9	7.5

2011 National Assessment Educational Progress (NAEP)

The National Assessment of Educational Progress (NAEP) is the largest national assessment of what our nation's students know and can do. NAEP assesses fourth-, eighth-, and twelfth-grade students in subjects such as reading, mathematics, science, and writing. The reporting of NAEP scores on state report cards is a federal mandate. The results of NAEP are also published as the Nation's Report Card, and are available for the nation, states, and, in some cases, urban districts. The NAEP scores on the report card include grades four and eight 2011 reading and math scores for New Jersey which are the last scores published. For subgroup outcomes, visit :

<http://www.nj.gov/education/pr/2013/naep/naep8read.html>

For more information, visit <http://nces.ed.gov/nationsreportcard/>

Proficiency Percentages

Grade 8 Reading	State/Nation	Below Basic	Basic	Proficient	Advanced
All Students	State (NJ)	15.8	39.5	38.6	6.2
All Students	Nation	25.3	43.0	28.6	3.0



ACADEMIC ACHIEVEMENT

BERGEN

HO HO KUS BORO

GRADE SPAN PK-08

03-2200-050
HO HO KUS
70 LLOYD ROAD
HO HO KUS, NJ 07423

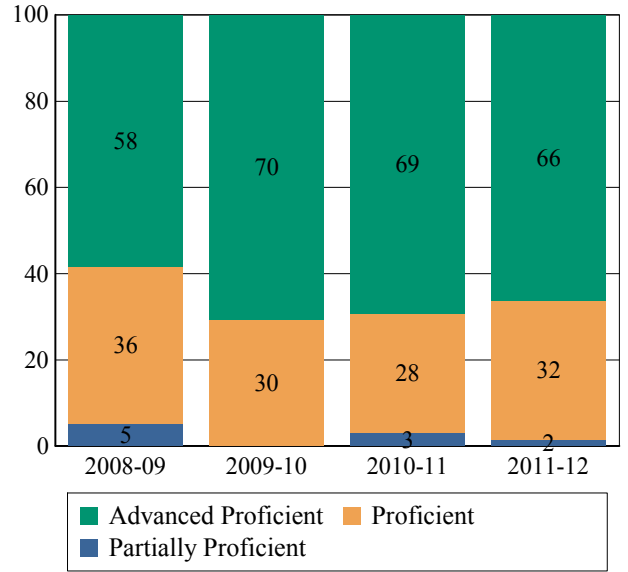
NJASK Results - Math Grade Level - 03

NJASK Proficiency Trends - Math - Grade Level - 03

This table presents the grade level proficiency results, as measured by NJASK, in Advanced Proficient, Proficient, and Partially Proficient categories for all appropriate subgroups.

This graph presents the grade level outcomes in the categories of Advanced Proficient, Proficient, and Partially Proficient over the last four years.

Subgroups	Advanced Proficient	Proficient	Partially Proficient
Schoolwide	66%	32%	2%
White	66%	33%	2%
Black	N/A	N/A	N/A
Hispanic	-	-	-
American Indian	N/A	N/A	N/A
Asian	-	-	-
Two or More Races	N/A	N/A	N/A
Students w/ Disability	62%	38%	0%
Limited English Proficient Students	N/A	N/A	N/A
Economically Disadvantaged Students	N/A	N/A	N/A



Data is presented for subgroups when the count is high enough under NCLB suppression rules.

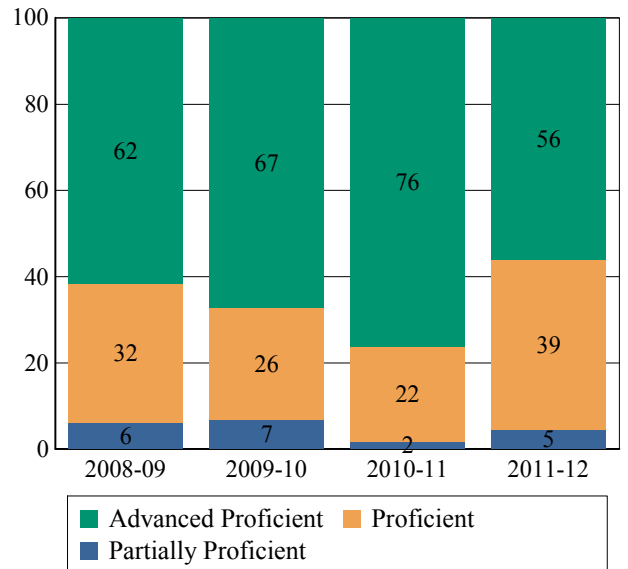
NJASK Proficiency Trends - Math - Grade Level - 04

NJASK Results - Math Grade Level - 04

This table presents the grade level proficiency results, as measured by NJASK, in Advanced Proficient, Proficient, and Partially Proficient categories for all appropriate subgroups.

This graph presents the grade level outcomes in the categories of Advanced Proficient, Proficient, and Partially Proficient over the last four years.

Subgroups	Advanced Proficient	Proficient	Partially Proficient
Schoolwide	56%	39%	5%
White	56%	41%	3%
Black	N/A	N/A	N/A
Hispanic	-	-	-
American Indian	N/A	N/A	N/A
Asian	-	-	-
Two or More Races	N/A	N/A	N/A
Students w/ Disability	42%	42%	17%
Limited English Proficient Students	N/A	N/A	N/A
Economically Disadvantaged Students	N/A	N/A	N/A



Data is presented for subgroups when the count is high enough under NCLB suppression rules.



ACADEMIC ACHIEVEMENT

BERGEN

HO HO KUS BORO

GRADE SPAN PK-08

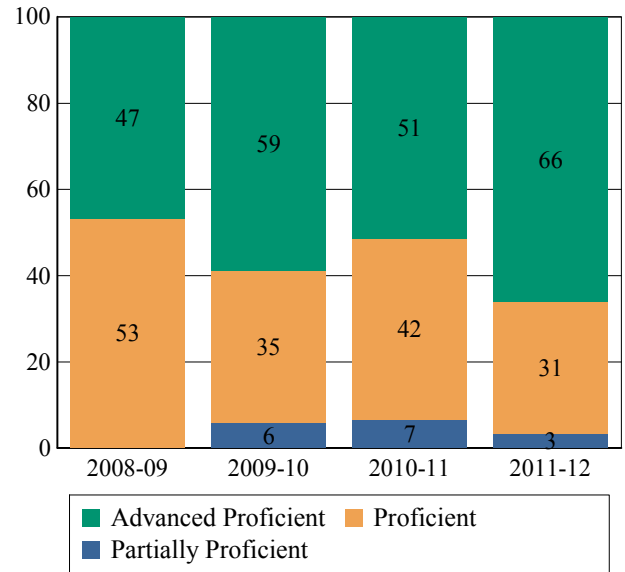
NJASK Results - Math Grade Level - 05

NJASK Proficiency Trends - Math - Grade Level - 05

This table presents the grade level proficiency results, as measured by NJASK, in Advanced Proficient, Proficient, and Partially Proficient categories for all appropriate subgroups.

This graph presents the grade level outcomes in the categories of Advanced Proficient, Proficient, and Partially Proficient over the last four years.

Subgroups	Advanced Proficient	Proficient	Partially Proficient
Schoolwide	66%	31%	3%
White	63%	33%	4%
Black	N/A	N/A	N/A
Hispanic	-	-	-
American Indian	N/A	N/A	N/A
Asian	-	-	-
Two or More Races	N/A	N/A	N/A
Students w/ Disability	-	-	-
Limited English Proficient Students	N/A	N/A	N/A
Economically Disadvantaged Students	N/A	N/A	N/A



Data is presented for subgroups when the count is high enough under NCLB suppression rules.

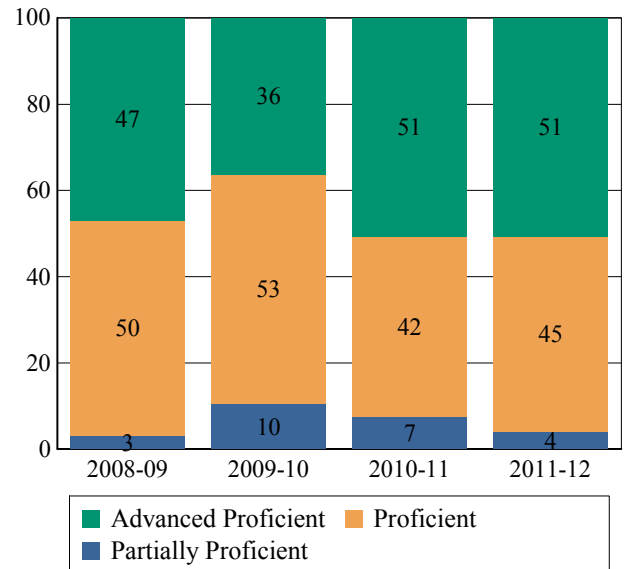
NJASK Proficiency Trends - Math - Grade Level - 06

NJASK Results - Math Grade Level - 06

This table presents the grade level proficiency results, as measured by NJASK, in Advanced Proficient, Proficient, and Partially Proficient categories for all appropriate subgroups.

This graph presents the grade level outcomes in the categories of Advanced Proficient, Proficient, and Partially Proficient over the last four years.

Subgroups	Advanced Proficient	Proficient	Partially Proficient
Schoolwide	51%	45%	4%
White	53%	43%	4%
Black	N/A	N/A	N/A
Hispanic	-	-	-
American Indian	N/A	N/A	N/A
Asian	-	-	-
Two or More Races	N/A	N/A	N/A
Students w/ Disability	17%	67%	17%
Limited English Proficient Students	N/A	N/A	N/A
Economically Disadvantaged Students	N/A	N/A	N/A



Data is presented for subgroups when the count is high enough under NCLB suppression rules.



ACADEMIC ACHIEVEMENT

BERGEN

HO HO KUS BORO

GRADE SPAN PK-08

03-2200-050
HO HO KUS
70 LLOYD ROAD
HO HO KUS, NJ 07423

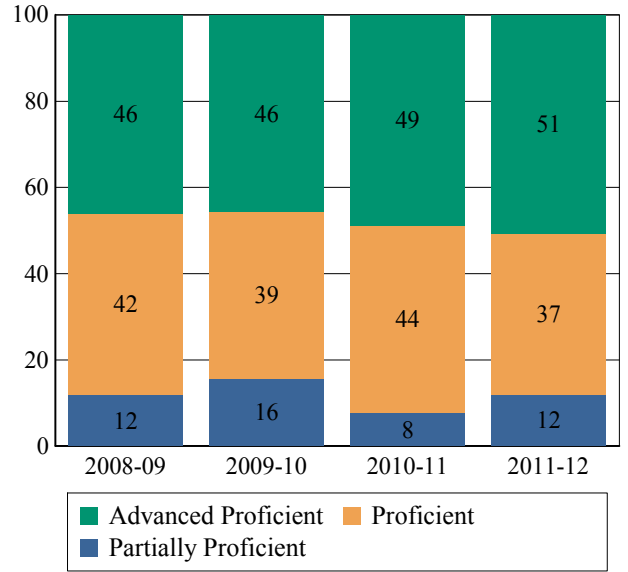
NJASK Results - Math Grade Level - 07

NJASK Proficiency Trends - Math - Grade Level - 07

This table presents the grade level proficiency results, as measured by NJASK, in Advanced Proficient, Proficient, and Partially Proficient categories for all appropriate subgroups.

This graph presents the grade level outcomes in the categories of Advanced Proficient, Proficient, and Partially Proficient over the last four years.

Subgroups	Advanced Proficient	Proficient	Partially Proficient
Schoolwide	51%	37%	12%
White	51%	35%	14%
Black	N/A	N/A	N/A
Hispanic	-	-	-
American Indian	N/A	N/A	N/A
Asian	-	-	-
Two or More Races	N/A	N/A	N/A
Students w/ Disability	23%	62%	15%
Limited English Proficient Students	-	-	-
Economically Disadvantaged Students	N/A	N/A	N/A



Data is presented for subgroups when the count is high enough under NCLB suppression rules.

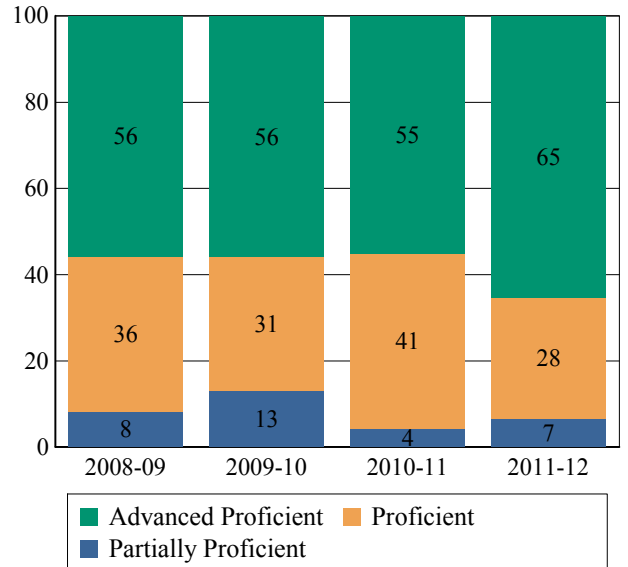
NJASK Proficiency Trends - Math - Grade Level - 08

NJASK Results - Math Grade Level - 08

This table presents the grade level proficiency results, as measured by NJASK, in Advanced Proficient, Proficient, and Partially Proficient categories for all appropriate subgroups.

This graph presents the grade level outcomes in the categories of Advanced Proficient, Proficient, and Partially Proficient over the last four years.

Subgroups	Advanced Proficient	Proficient	Partially Proficient
Schoolwide	65%	28%	7%
White	64%	30%	6%
Black	N/A	N/A	N/A
Hispanic	-	-	-
American Indian	N/A	N/A	N/A
Asian	-	-	-
Two or More Races	N/A	N/A	N/A
Students w/ Disability	-	-	-
Limited English Proficient Students	-	-	-
Economically Disadvantaged Students	N/A	N/A	N/A



Data is presented for subgroups when the count is high enough under NCLB suppression rules.



ACADEMIC ACHIEVEMENT

BERGEN

HO HO KUS BORO

GRADE SPAN PK-08

2011 National Assessment Educational Progress (NAEP)

The National Assessment of Educational Progress (NAEP) is the largest national assessment of what our nation's students know and can do. NAEP assesses fourth-, eighth-, and twelfth-grade students in subjects such as reading, mathematics, science, and writing. The reporting of NAEP scores on state report cards is a federal mandate. The results of NAEP are also published as the Nation's Report Card, and are available for the nation, states, and, in some cases, urban districts. The NAEP scores on the report card include grades four and eight 2011 reading and math scores for New Jersey which are the last scores published. For subgroup outcomes, visit :

<http://www.nj.gov/education/pr/2013/naep/naep4math.html>

For more information, visit <http://nces.ed.gov/nationsreportcard/>

Proficiency Percentages

Grade 4 Math	State/Nation	Below Basic	Basic	Proficient	Advanced
All Students	State (NJ)	11.0	38.3	40.9	9.8
All Students	Nation	18.1	42.3	33.2	6.5

2011 National Assessment Educational Progress (NAEP)

The National Assessment of Educational Progress (NAEP) is the largest national assessment of what our nation's students know and can do. NAEP assesses fourth-, eighth-, and twelfth-grade students in subjects such as reading, mathematics, science, and writing. The reporting of NAEP scores on state report cards is a federal mandate. The results of NAEP are also published as the Nation's Report Card, and are available for the nation, states, and, in some cases, urban districts. The NAEP scores on the report card include grades four and eight 2011 reading and math scores for New Jersey which are the last scores published. For subgroup outcomes, visit :

<http://www.nj.gov/education/pr/2013/naep/naep8math.html>

For more information, visit <http://nces.ed.gov/nationsreportcard/>

Proficiency Percentages

Grade 8 Math	State/Nation	Below Basic	Basic	Proficient	Advanced
All Students	State (NJ)	17.8	35.3	33.2	13.6
All Students	Nation	27.7	38.8	25.7	7.8



State of New Jersey

03-2200-050
 HO HO KUS
 70 LLOYD ROAD
 HO HO KUS, NJ 07423

ACADEMIC ACHIEVEMENT

BERGEN

HO HO KUS BORO

GRADE SPAN PK-08

NJASK Results - Science Grade Level - 04

This table presents the grade level proficiency results, as measured by NJASK, in Advanced Proficient, Proficient, and Partially Proficient categories for all appropriate subgroups.

Subgroups	Advanced Proficient	Proficient	Partially Proficient
Schoolwide	59%	38%	3%
White	57%	41%	2%
Black	N/A	N/A	N/A
Hispanic	-	-	-
American Indian	N/A	N/A	N/A
Asian	-	-	-
Two or More Races	N/A	N/A	N/A
Students w/ Disability	58%	25%	17%
Limited English Proficient Students	N/A	N/A	N/A
Economically Disadvantaged Students	N/A	N/A	N/A

Data is presented for subgroups when the count is high enough under NCLB suppression rules.

NJASK Results - Science Grade Level - 08

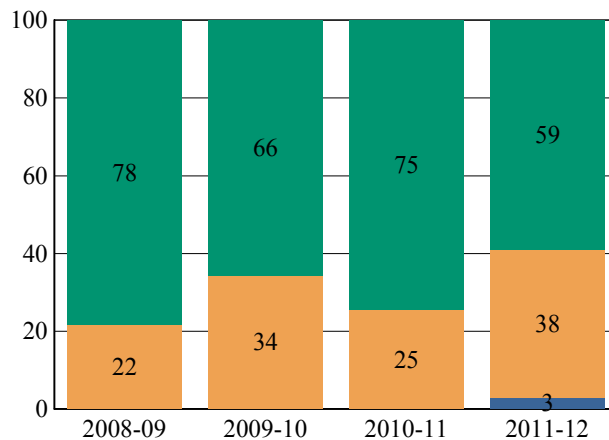
This table presents the grade level proficiency results, as measured by NJASK, in Advanced Proficient, Proficient, and Partially Proficient categories for all appropriate subgroups.

Subgroups	Advanced Proficient	Proficient	Partially Proficient
Schoolwide	77%	23%	0%
White	77%	23%	0%
Black	N/A	N/A	N/A
Hispanic	-	-	-
American Indian	N/A	N/A	N/A
Asian	-	-	-
Two or More Races	N/A	N/A	N/A
Students w/ Disability	-	-	-
Limited English Proficient Students	-	-	-
Economically Disadvantaged Students	N/A	N/A	N/A

Data is presented for subgroups when the count is high enough under NCLB suppression rules.

NJASK Proficiency Trends - Science - Grade Level - 04

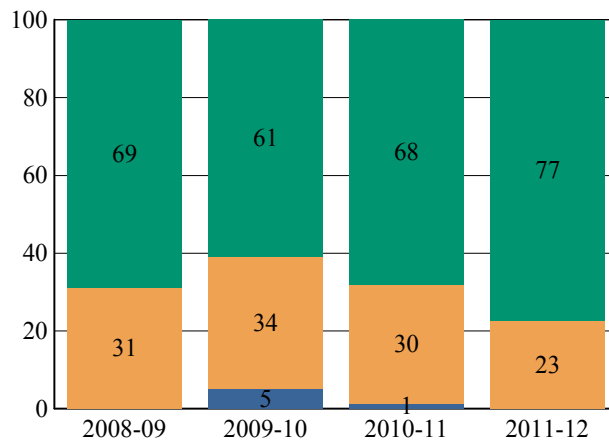
This graph presents the grade level outcomes in the categories of Advanced Proficient, Proficient, and Partially Proficient over the last four years.



Advanced Proficient Proficient Partially Proficient

NJASK Proficiency Trends - Science - Grade Level - 08

This graph presents the grade level outcomes in the categories of Advanced Proficient, Proficient, and Partially Proficient over the last four years.



Advanced Proficient Proficient Partially Proficient



State of New Jersey

COLLEGE AND CAREER READINESS

BERGEN
HO HO KUS BORO

GRADE SPAN PK-08

03-2200-050
HO HO KUS
70 LLOYD ROAD
HO HO KUS, NJ 07423

Students in both elementary and middle schools begin to demonstrate college readiness behaviors long before they even enter high school. Among the behaviors that research has shown to be indicative of success and college and career readiness are regularly attending school and challenging themselves with rigorous course work. First, the table presents the percentage of students, as measured against the school's enrollment in seventh and eighth grade, who were reported via NJSMART as being enrolled in Algebra I. The table also presents the percentage of students who were chronically absent during the prior school year. A chronically absent student is a student who was not present for any reason for more than 10% of the total days possible for that individual student.

The first column - Schoolwide Performance - represents the outcomes for these particular indicators in this school. The second column - Peer School Percentile Rank - indicates how the school's performance compares to its group of peer schools. For example, a school whose peer school rank is 65 in Algebra I Enrollment has a higher Algebra I Enrollment than 65% of its peer group. The third column - Statewide Percentile Rank - indicates how the school's performance compares to schools across the state. The fourth column - Statewide Target - provides the statewide targets for each of these indicators. The last column - Met Target? - indicates whether the School Performance met or exceeded the statewide target.

The Summary row presents the averages of the peer school percentile ranks, the average of statewide percentile ranks and the percentage of statewide targets met.

College and Career Readiness Indicators	School Performance	Peer Rank (Percentile)	Statewide Rank (Percentile)	Statewide Target	Met Target?
Students taking Algebra (%)	30%	58	74	20%	YES
Chronic Absenteeism (%)	3%	70	86	6%	YES
Summary		64	80		100%

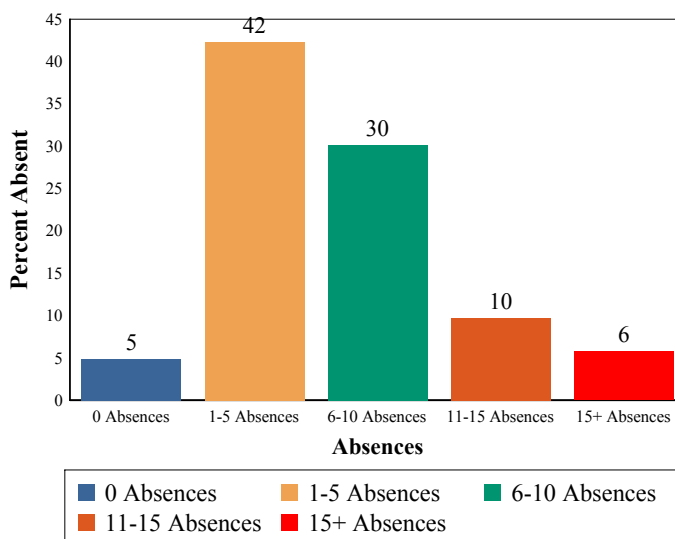
Algebra I

This table presents the percentage of seventh and eighth graders who were reported in the Algebra I course code in NJSMART and the percentage of those students who earned a C or higher in the course.

2011-12	School
Students taking Algebra I	30%
Algebra grade (C or better)	100%

Absenteeism

The chart below presents the percentage of students who were absent in each category of absence: 0 absences, 1- 5 absences, 6- 10 absences, 11 - 15 absences, and more than 15 absences. An absence is defined as being 'not present' and includes the days missed regardless of whether they were determined to be excused or unexcused by the school.





State of New Jersey

03-2200-050

HO HO KUS

70 LLOYD ROAD

HO HO KUS, NJ 07423

STUDENT GROWTH

BERGEN

HO HO KUS BORO

GRADE SPAN PK-08

This section of the performance report presents data about student growth, utilizing the Student Growth Percentile Methodology (SGP). SGP creates a measure of how students progressed in grades 4 through 8 in NJ ASK Language Arts Literacy and Math when compared to other students with a similar NJ ASK test score history. A short video explaining the methodology can be found here: <http://www.state.nj.us/education/njsmart/performance/>

The first column - Schoolwide Performance - presents the schoolwide median growth score in either Language Arts Literacy or Math for all students in the school. The second column - Peer Rank - indicates how the school's growth performance compares to its group of peer schools. The third column - Statewide Rank - indicates how a school compares to schools across the state. The last column - Met Target? - indicates whether the school's performance met or exceeded the target.

The summary row presents the averages of the peer school percentile ranks, the averages of statewide percentile ranks, the percentage of statewide targets met.

Student Growth Indicators	Schoolwide Performance	Peer Rank (Percentile)	Statewide Rank (Percentile)	Statewide Target	Met Target?
Student Growth on Language Arts	44	10	29	35	YES
Student Growth on Math	51	31	57	35	YES
		21	43		100%

Student Growth

This table presents for all students with growth scores the interaction between their proficiency level on NJASK and their growth scores. For example, in the top left cell the percentage of students who are both partially proficient AND also demonstrating low growth is displayed.

Language Arts

Math

	GROWTH		
	Low	Typical	High
Partially Proficient	11%	1%	1%
Proficient	27%	25%	18%
Advanced Proficient	1%	6%	11%

	GROWTH		
	Low	Typical	High
Partially Proficient	4%	1%	1%
Proficient	17%	13%	6%
Advanced Proficient	14%	15%	29%

Low Growth is defined as an **Student Growth Percentile** score less than 35.

Typical Growth is defined as an **Student Growth Percentile** score between 35 and 65.

High Growth is defined as a **Student Growth Percentile** score higher than 65.



State of New Jersey

03-2200-050
 HO HO KUS
 70 LLOYD ROAD
 HO HO KUS, NJ 07423

WITHIN SCHOOL ACHIEVEMENT GAP

BERGEN
 HO HO KUS BORO

GRADE SPAN PK-08

This section of the performance report presents data about the achievement gap that exists within a school - as measured by the difference between the students' scale scores at the 25th and 75th percentile in the school, the so-called Interquartile Range (IQR). Taken together with an understanding of the overall and average achievement levels in the school, the IQR furthers an understanding of the range of student outcomes that exist in a school. A school gap smaller than the state gap indicates that the school's range of student outcomes is narrower than the state's while a school gap larger than the state gap indicates that the school's range of student outcomes is larger than the state's.

Grade Level - 03

NJ ASK Language Arts 25th %ile vs 75th%ile

This table presents the scale scores associated with students at the bottom (0th percentile), the 25th percentile, the 50th percentile, the 75th percentile and the top (99th percentile) of school's distribution

Percentile	Scale Score
99th	281
75th	232
50th	219
25th	206
0th	185

	Scale Score Gap - School	Scale Score Gap - State
25th vs 75th Gap	26	28

Grade Level - 03

NJ ASK Math 25th %ile vs 75th%ile

This table presents the scale scores associated with students at the bottom (0th percentile), the 25th percentile, the 50th percentile, the 75th percentile and the top (99th percentile) of school's distribution

Percentile	Scale Score
99th	300
75th	285
50th	262
25th	244
0th	184

	Scale Score Gap - School	Scale Score Gap - State
25th vs 75th Gap	41	61

Grade Level - 04

NJ ASK Language Arts 25th %ile vs 75th%ile

This table presents the scale scores associated with students at the bottom (0th percentile), the 25th percentile, the 50th percentile, the 75th percentile and the top (99th percentile) of school's distribution

Percentile	Scale Score
99th	256
75th	230
50th	216
25th	202
0th	154

	Scale Score Gap - School	Scale Score Gap - State
25th vs 75th Gap	28	31

Grade Level - 04

NJ ASK Math 25th %ile vs 75th%ile

This table presents the scale scores associated with students at the bottom (0th percentile), the 25th percentile, the 50th percentile, the 75th percentile and the top (99th percentile) of school's distribution

Percentile	Scale Score
99th	300
75th	282
50th	254
25th	226
0th	149

	Scale Score Gap - School	Scale Score Gap - State
25th vs 75th Gap	56	56



WITHIN SCHOOL ACHIEVEMENT GAP

BERGEN

HO HO KUS BORO

GRADE SPAN PK-08

Grade Level - 05

NJ ASK Language Arts 25th %ile vs 75th%ile

This table presents the scale scores associated with students at the bottom (0th percentile), the 25th percentile, the 50th percentile, the 75th percentile and the top (99th percentile) of school's distribution

Percentile	Scale Score
99th	272
75th	235
50th	218
25th	206
0th	158

	Scale Score Gap - School	Scale Score Gap - State
25th vs 75th Gap	29	38

Grade Level - 06

NJ ASK Language Arts 25th %ile vs 75th%ile

This table presents the scale scores associated with students at the bottom (0th percentile), the 25th percentile, the 50th percentile, the 75th percentile and the top (99th percentile) of school's distribution

Percentile	Scale Score
99th	264
75th	237
50th	226
25th	213
0th	181

	Scale Score Gap - School	Scale Score Gap - State
25th vs 75th Gap	24	34

Grade Level - 05

NJ ASK Math 25th %ile vs 75th%ile

This table presents the scale scores associated with students at the bottom (0th percentile), the 25th percentile, the 50th percentile, the 75th percentile and the top (99th percentile) of school's distribution

Percentile	Scale Score
99th	300
75th	287
50th	256
25th	242
0th	172

	Scale Score Gap - School	Scale Score Gap - State
25th vs 75th Gap	45	56

Grade Level - 06

NJ ASK Math 25th %ile vs 75th%ile

This table presents the scale scores associated with students at the bottom (0th percentile), the 25th percentile, the 50th percentile, the 75th percentile and the top (99th percentile) of school's distribution

Percentile	Scale Score
99th	300
75th	275
50th	250
25th	227
0th	162

	Scale Score Gap - School	Scale Score Gap - State
25th vs 75th Gap	48	57



WITHIN SCHOOL ACHIEVEMENT GAP

BERGEN

HO HO KUS BORO

GRADE SPAN PK-08

Grade Level - 07

NJ ASK Language Arts 25th %ile vs 75th%ile

This table presents the scale scores associated with students at the bottom (0th percentile), the 25th percentile, the 50th percentile, the 75th percentile and the top (99th percentile) of school's distribution

Percentile	Scale Score
99th	293
75th	248
50th	230
25th	214
0th	123

	Scale Score Gap - School	Scale Score Gap - State
25th vs 75th Gap	34	44

Grade Level - 08

NJ ASK Language Arts 25th %ile vs 75th%ile

This table presents the scale scores associated with students at the bottom (0th percentile), the 25th percentile, the 50th percentile, the 75th percentile and the top (99th percentile) of school's distribution

Percentile	Scale Score
99th	275
75th	251
50th	238
25th	228
0th	204

	Scale Score Gap - School	Scale Score Gap - State
25th vs 75th Gap	23	33

Grade Level - 07

NJ ASK Math 25th %ile vs 75th%ile

This table presents the scale scores associated with students at the bottom (0th percentile), the 25th percentile, the 50th percentile, the 75th percentile and the top (99th percentile) of school's distribution

Percentile	Scale Score
99th	300
75th	262
50th	250
25th	215
0th	161

	Scale Score Gap - School	Scale Score Gap - State
25th vs 75th Gap	47	61

Grade Level - 08

NJ ASK Math 25th %ile vs 75th%ile

This table presents the scale scores associated with students at the bottom (0th percentile), the 25th percentile, the 50th percentile, the 75th percentile and the top (99th percentile) of school's distribution

Percentile	Scale Score
99th	300
75th	270
50th	254
25th	237
0th	146

	Scale Score Gap - School	Scale Score Gap - State
25th vs 75th Gap	33	64



SCHOOL CLIMATE

BERGEN

HO HO KUS BORO

GRADE SPAN PK-08

03-2200-050

HO HO KUS

70 LLOYD ROAD

HO HO KUS, NJ 07423

Length of School Day

This table presents the amount of time a school is in session for a typical student on a normal school day.

	School
2011-12	6 Hrs 34 Mins

Student Suspension Rate

This table presents the percentage of students who were suspended one or more times during the school year.

	School
2011-12	1.7%

Instructional Time

This table presents the amount of time that a typical student is engaged in instructional activities under the supervision of a certified teacher.

2011-12	School
Full Time	5 Hrs 49 Mins.
Shared Time	0 Hrs. 0 Mins.

Student Expulsions

This table presents the number of students who were expelled from the school and district during the school year.

	School
2011-12	0

Student to Staff Ratio

This table presents the count of students per faculty member or administrator in the school. All staff are counted in full-time equivalents.

2011-12	School
Faculty	11.1
Administrators	361.1

SCHOOL PEER GROUP**HO HO KUS****03-2200-050**

This table presents the list of peer schools in alphabetical order by county name that was created specifically for this school (highlighted in yellow). Peer schools are drawn from across the state and represent schools that have similar grade configurations and that are educating students of similar demographic characteristics, as measured by enrollment in Free/Reduced Lunch Programs, Limited English Proficiency or Special Education Programs.

<u>COUNTY NAME</u>	<u>DISTRICT NAME</u>	<u>SCHOOL NAME</u>	<u>CDS</u> <u>CODE</u>	<u>GRADE</u> <u>SPAN</u>	<u>FRPL</u>	<u>LEP</u>	<u>SpED</u>
BERGEN	ALPINE BORO	ALPINE ELEM	03-0080-010	KG-08	0.0%	1.4%	16.7%
BERGEN	HO HO KUS BORO	HO HO KUS	03-2200-050	PK-08	0.0%	0.5%	15.8%
BERGEN	MONTVALE BORO	FIELDSTONE MIDDLE	03-3330-020	05-08	0.6%	0.0%	12.7%
BERGEN	UPPER SADDLE RIVER BORO	EMIL A CAVALLINI	03-5330-050	06-08	0.0%	0.6%	12.9%
BERGEN	WALDWICK BORO	WALDWICK MIDDLE SCHOOL	03-5410-070	06-08	1.3%	0.5%	16.6%
BERGEN	WOODCLIFF LAKE BORO	WOODCLIFF MIDDLE SCHOOL	03-5880-050	06-08	0.4%	0.0%	13.4%
BURLINGTON	MEDFORD LAKES BORO	NEETA SCHOOL	05-3070-040	03-08	0.9%	0.0%	11.2%
CAMDEN	HADDONFIELD BORO	MIDDLE	07-1900-070	06-08	1.1%	0.0%	17.5%
CHARTERS	RIDGE AND VALLEY CS	RIDGE AND VALLEY CS	80-7727-900	KG-08	0.0%	0.0%	25.0%
ESSEX	CEDAR GROVE TWP	CEDAR GROVE MEMORIAL MS	13-0760-058	05-08	0.0%	0.2%	13.1%
ESSEX	LIVINGSTON TWP	HERITAGE MIDDLE SCH	13-2730-055	07-08	1.5%	0.1%	14.7%
GLOUCESTER	PITMAN BORO	PITMAN MIDDLE SCHOOL	15-4140-075	06-08	0.0%	0.0%	15.7%
HUNTERDON	CALIFON BORO	CALIFON BOROUGH	19-0670-030	PK-08	0.0%	0.0%	9.4%
MIDDLESEX	MONROE TWP	APPLEGARTH	23-3290-020	06-08	0.0%	0.2%	14.6%
MONMOUTH	FAIR HAVEN BORO	KNOLLWOOD	25-1440-050	04-08	0.4%	0.0%	16.0%
MONMOUTH	MONMOUTH BEACH BORO	MONMOUTH BEACH ELEM	25-3250-050	KG-08	0.3%	0.0%	9.0%
MONMOUTH	RUMSON BORO	FORRESTDAL	25-4570-050	04-08	0.0%	0.0%	14.3%
MONMOUTH	SHREWSBURY BORO	SHREWSBURY ELEM	25-4770-050	PK-08	0.8%	0.0%	17.0%
MONMOUTH	SPRING LAKE BORO	H W MOUNTZ ELEM	25-4980-050	PK-08	1.1%	0.0%	12.3%
MORRIS	BOONTON TWP	ROCKAWAY VALLEY	27-0460-060	PK-08	1.2%	0.0%	13.8%
MORRIS	EAST HANOVER TWP	EAST HANOVER MIDDLE	27-1190-050	06-08	0.0%	0.0%	15.8%
MORRIS	HANOVER TWP	MEMORIAL JUNIOR	27-2000-040	06-08	0.2%	0.2%	12.4%
MORRIS	KINNELON BORO	PEARL R MILLER MIDDLE	27-2460-065	06-08	1.3%	0.0%	14.1%
MORRIS	MENDHAM TWP	MENDHAM TWP MIDDLE	27-3100-060	05-08	0.2%	0.2%	16.1%
MORRIS	MOUNTAIN LAKES BORO	BRIARCLIFF	27-3460-060	06-08	0.7%	0.4%	14.8%
SOMERSET	WARREN TWP	MIDDLE	35-5470-033	06-08	0.5%	0.5%	17.6%
SOMERSET	WATCHUNG BORO	VALLEY VIEW	35-5540-050	05-08	0.3%	0.3%	15.8%
UNION	BERKELEY HEIGHTS TWP	COLUMBIA	39-0310-030	06-08	1.4%	0.0%	15.1%
UNION	WESTFIELD TOWN	ROOSEVELT INTERMEDIATE	39-5730-060	06-08	1.2%	0.0%	16.3%
WARREN	HARMONY TWP	HARMONY TOWNSHIP SCHOOL	41-2040-030	PK-08	0.0%	0.0%	14.8%