

N.J. Periodicals

New Jersey

Outdoors



Vol. 17, No. 3

Division of Fish and Game

September, 1966

FREE PUBLIC LIBRARY
MONTON, NEW JERSEY

OCT 5 - 1966





Ode to the Mudhen

When the guzzles all are flooded
And the swallows start to flock
Then you hear the raucous cackle of the sneaky, mudhen cock.
It's September in the marshes
and the sedge has turned to gold.
The snapper blues are in the creeks
And the mud is turning cold.
It's time to grease your scattergun,
To ease your skiff from the dock.
It's time for clams and oysters,
And the sneaky, mudhen cock.
The hardshells feed on the flooded marsh.
The willetts scream in the air.
The mullets boil where the guzzles join the racing thoroughfare.
It's time to grab your pushpole,
To don your sneaks and socks.
It's time to tramp the Jersey mud in search of mudhen cocks.
When December snows are drifting
And you doze by the Yuletide logs,
Do you dream of grouse on October hills
Or woodcock probing bogs?
No—you dream of oozing Jersey mud,
Of muddy shotgun stocks,
Of east winds pushing up the tide,
And those sneaky, mudhen cocks.

"Mudhen" Moyle



State of New Jersey

Richard J. Hughes
Governor

Department of Conservation and Economic Development

Robert A. Roe
Commissioner

Division of Fish and Game
L. G. MacNamara
Director

Fish and Game Council

David H. Hart, Chairman
Cape May ('68)

Joseph L. Alampi,
Franklinville ('67)

Charles Cane,
Rosemont ('68)

J. M. Charlesworth, Jr.,
Millville ('66)

Jules Marron, Sr.,
Newton ('69)

George H. McCloskey,
Flanders ('65)

G. Albert Reid,
Linwood ('66)

Raymond T. Richardson,
Pt. Monmouth ('68)

Fred Space,
Sussex ('67)

Fred H. Totten,
Ringoes ('69)

Law Enforcement

William P. Coffin,
Chief Conservation
Officer

Newman Mathis,
Chief—Coastal Patrol

Wildlife Management

George N. Alpaugh,
Chief of the Bureau

Oscar Sussman, D.V.M.,
Veterinary Consultant

Fisheries Management

Robert A. Hayford,
Chief of the Bureau

New Jersey *Outdoors*

Published monthly by the State of New Jersey Division of Fish and Game
in the interest of conservation and restoration of wildlife and
the betterment of hunting and fishing in New Jersey.

In This Issue

Ode to the Mudhen	Inside Front Cover
Migration—Nature's Enigma	2
Road Building and Fishing	5
Clay Targets	8
Civilian Marksmanship	10
Get Your Dog Ready for Hunting Season	13
Your Trophy and the Taxidermist	14
Sweet Gum	18
1966 Hunting Regulations	20
Council Highlights	26
Dennis Creek Tract	29
Big Rock Bass	30
Violators Roundup	31
Fur, Fin and Campfire	Inside Back Cover

Cover—"Hunter's Companion"—Gaines

Hunting dogs, of any breed or type, are the hunter's best company in the field. Whether the hunter goes it alone or with other nimrods, a well-trained dog makes the day more complete and pleasant, and usually adds to the size of the bag. On page 13 there are some timely tips on dog care.

Vol. 17, No. 3

September, 1966

Publication Office: The Division of Fish and Game
P. O. Box 1809, Trenton, New Jersey 08625

Editor: R. Adams

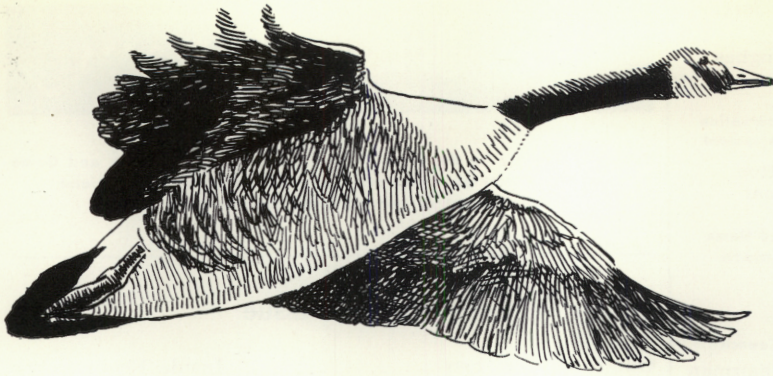
2nd class postage paid at Trenton, N. J. 08608, and additional mailing office.

Subscription: \$2.00 a year, by check or money order, payable to Division of Fish and Game. Cash is forwarded at sender's risk. No stamps please.

Change of address: Should be reported directly to the Editor. Send both old and new address. The Post Office will not forward copies unless forwarding postage is provided by subscriber. Copies not delivered through failure to send change of address six weeks in advance cannot be replaced.

All unsolicited material is sent to the magazine at the risk of the sender. Permission granted to reprint with credit to *New Jersey Outdoors*.

New Jersey State Library



Migration-

Nature's Enigma

by J. P. Linduska

Soon, now, our fields, woodlands, and marshes will find something added as migrants from the north return to winter quarters. Woodcock from New England and the Maritimes will bide a while in local woodlands on their way to the Gulf Coast. Canada geese from Hudson Bay will bring new life to cornfields and open waters of our lakes, reservoirs, and bays. New Jersey rivers and marshes will echo the excited chatter of geese from Canada and pintails and mallards from Saskatchewan.

Mass Movement

Hunters especially are alert to this mass movement because waterfowl and some of the shore birds are prized game. But these few

dozen species are a small part of the total migratory mass. Add to them many more kinds of songbirds, hawks, cranes, and pelicans. In terms of variety, the shifting swarm involves several hundred species. And as for a total head count, say a few hundred million, more or less.

But Why?

Why? What prompts this world of birds to labor north each spring for purposes of nesting only to retrace their flight a few months later?

One Theory

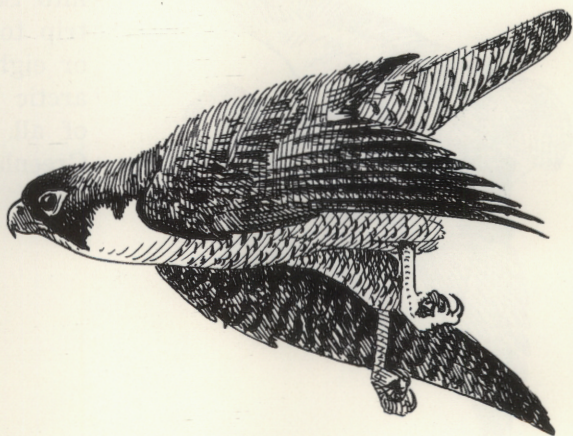
There is no good answer. But at least you have a choice of theories. Some attribute it to the ice age, believing that all birds once lived

in the north but were driven south by the glacial build up. Then as the ice retreated, over centuries of time, the birds attempted each spring to return to their ancestral homes. The approach of winter forced them back south but repeated efforts led to habit—hence the spring and winter movement.

Another Approach

According to other experts, that explanation is 180 degrees wrong.

Soon the skies will come alive to the mass of migrating birds; from geese to hawks. Canada goose, opposite left, and duck hawk, or peregrine, right



They begin with the assumption that all birds once lived in the tropics. As crowding developed a need for elbow room, some moved north to nest. Then with the coming of winter, they returned home to the southland. And that became a habit.

The Drive

As with many beginnings shrouded in the past, the why of it all is hard to reconstruct. The how of it makes more sense and the underlying drive is, if you'll pardon the expression, sex. Light stimu-

lates development and activity of the breeding glands of birds. As we move seasonally from winter to spring, the hours of daylight increase and with it, the sex drive. Finally, as breeding condition approaches, the birds strike out for nesting grounds in the north. The phenomenon can be produced by exposing captive birds to increased hours of artificial light. It helps explain why some birds are so punctual in spring migration, since the

hours of daylight on any given date are the same from year to year.

Time of Travel

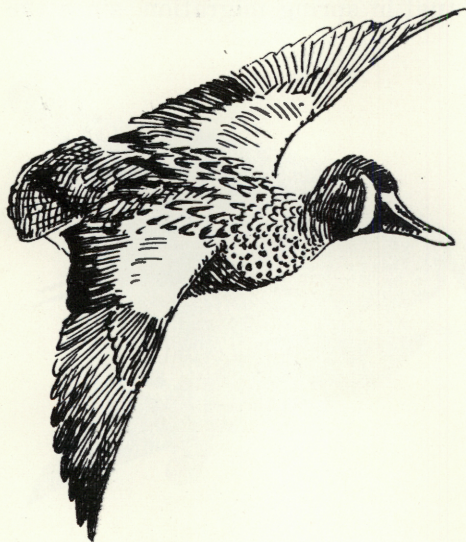
It's a fair arrangement, too, wherein the love life is triggered for different species at different times. Some migrants press northward on receding snows, whereas others sop sunlight until late spring before they're ready. The result is that the big migratory push is spread over several months to the benefit of flyway traffic. And the same with the time of day. The majority of the songbirds travel at

Migration

night, but larger birds such as many ducks, geese, hawks, and gulls do most of their travel in daylight.

Bird Migration

In terms of accuracy of movement, the hours of travel make little difference. They have the sun by day and the stars at night, and



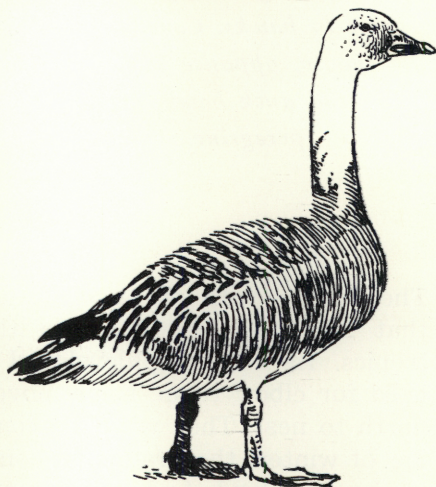
Blue-winged teal fly up to 8,000 miles round trip during migration

recent studies pretty well establish that these are the means of bird navigation. It works well. Some individual ducks have been known to return to the same precise spot in the same marsh to nest in succeeding years, and this after a round-trip journey of possibly 4,000 miles and a time lapse of eight or nine months. Some song birds, also, are so unerring in their year-to-year trips that they pause for handouts at the same feeding stations before

nesting in the same tree of their choice in a preceding year.

Distances

Considering that some of our resident birds are content to live out their life span on a few acres of land, the travels of the migratory clan take a lot of understanding. Many ducks and geese travel four to five thousand miles in rounding out a migration to nesting grounds and back. A few, such as the pintail and blue-winged teal, reach into South America for a round trip tour that may add to seven or eight thousand miles. But the arctic tern is the most foot-loose of all. From nesting grounds in Greenland and the top of North



Snow geese are spectacular migrants

America, it crosses the Atlantic to Europe, then moves to the Antarctic. The cricle tour takes them over 25,000 miles each year.

The riddle of migration, indeed! It does seem like a lot of work just to raise a family. #

Road Building and Fishing

By R. W. Eschmeyer

SOME YEARS AGO a road was built through some rolling land. In one hollow this called for a dirt fill about 40 feet high. A culvert was installed below the fill so that water could drain down the hollow.

The hollow drained into a fine 45-acre fishing lake. This lake was one of a number which had been built so that people would have places to fish.

A Rain

One day, during a heavy rain, a part of the dirt fill slid over the culvert, closing it so water could not pass through. As more rain fell, a pond of water formed behind the fill. The road builders blasted open the closed end of the culvert.

The water rushed down the ravine, carrying big amounts of silt and mud into the lake.

Damage

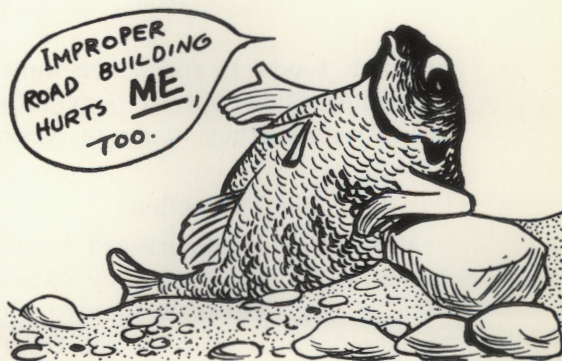
The upper three or four acres of the lake were completely filled with silt. A thick layer of mud and silt was deposited over the whole bottom of the lake. The lake was badly damaged. It had to be drained and renovated before it would provide good fishing again.

Here was an instance where poor road construction seriously harmed the fishing. There are many places where poor road building has caused mud and silt to flow into our lakes and streams.

Trout Stream

A good example of the harm done by such silting was shown on a trout stream. Here the actual silt happened to come from dredging, not from road building, though siltation from road building could be expected to give similar results.

In this river, a fishery man checked on the fish to see what kinds were there and how plentiful they were. Above the dredgings, in the clear water, he found many trout. Below the dredging he found



. . . Road Building

no trout for thirty miles — only rough fish. The trout wouldn't live in this water.

Death

Baskets of trout eggs and live boxes with fingerling trout were put in the water downstream from the dredging. In twenty days all the eggs had died, and more than half of the fingerling trout were dead, too.

Silt destroys fish, fish habitat,

washing away. The cuts made into the banks are also planted.

You will find little silting along the main roads. However, if you drive over the back roads during a heavy downpour of rain, you might find many places where mud from these roads is washed into the streams.

Logging Roads

Heavy damage to streams and lakes in our forests can result from the building of logging roads. To reduce the damage in public



Poor road building—poor fishing

and fish food. If roads are built that they allow silt to pour into the streams, they damage your fishing.

Silt Protection

Most main hard-surfaced roads are now built so that they cause little silting. Grass is planted on the shoulders to keep the soil from

forests, foresters require that the loggers follow certain specifications.

In hilly country the roads are sometimes built at the very edge of the stream, because the land is more level here. Such road building often damages the stream for fishing.

Of course, strip mining and digging for gravel or stone in hilly country can destroy our fishing, too. In this kind of mining all vegetation is removed and the soil covering is removed from the layer of sand, gravel, or stone, or the layers of rock bearing the ore which is being mined.

During heavy rains, big amounts of this soil are washed into the streams flowing through the valleys. The stream beds are covered with silt and the water is usually muddy. Because of strip mining, these streams support few fish, and very little fishing.

Reservoirs

The mud, whether from road building or from mining, may harm the waters for many miles downstream. If the stream happens to flow into a reservoir, the silt load is dropped in the slower-moving

or standing water. The reservoirs gradually fill with mud and silt, and become useless for both fishing and water storage.

What To Do

If you find that poor road building is destroying streams in your area, you can do something about it. Highway departments are sensitive to criticism. If enough people complain, these departments will usually make every effort to improve the situation.

Interestingly enough, if a road is a bit bumpy, people soon complain about it. They want a "smooth" ride. But, if a road washes loads of silt into our streams most folks don't seem to even notice it.

What we do on the land affects your fishing. Even the way we build our roads can make a difference in your angling success. #



Good road building—good fishing

Sharpen Your Shooting Eye on

Clay Targets

By Ted Mc Cawley

There's a vast difference between using a shotgun to shoot at inanimate targets on a trap or skeet field and facing a fast-flushing game bird in the field. A grouse exploding skyward from close cover or a covey of quail flushing unexpectedly can be disconcerting even to the most experienced hunter.

The Elements

However, clay target shooting is the best way to learn the elements of proper gun handling. The same principles of lead and swing-and-follow-through apply whether you're in a duck blind or on a skeet field.

Target vs. Bird

Of course, it's a relatively simple thing to assume the proper stance, mount your gun correctly, and work out the proper lead as you can call for the target when you are ready and you know just about where it is going. It's a different matter when you are approaching a setter on point with no idea which way—or when—the bird will flush.

Advantages

If you practice proper stance and correct gun handling procedures on clay target fields, however, you will find it begins to come almost instinctively in hunting sit-

uations. On top of that and equally important, the organized clay target games of trap and skeet shooting are great fun in themselves. Competitions range all the way from small club shoots to championship events such as the Grand American Trapshooting Handicap with more than 3,000 entries each year.

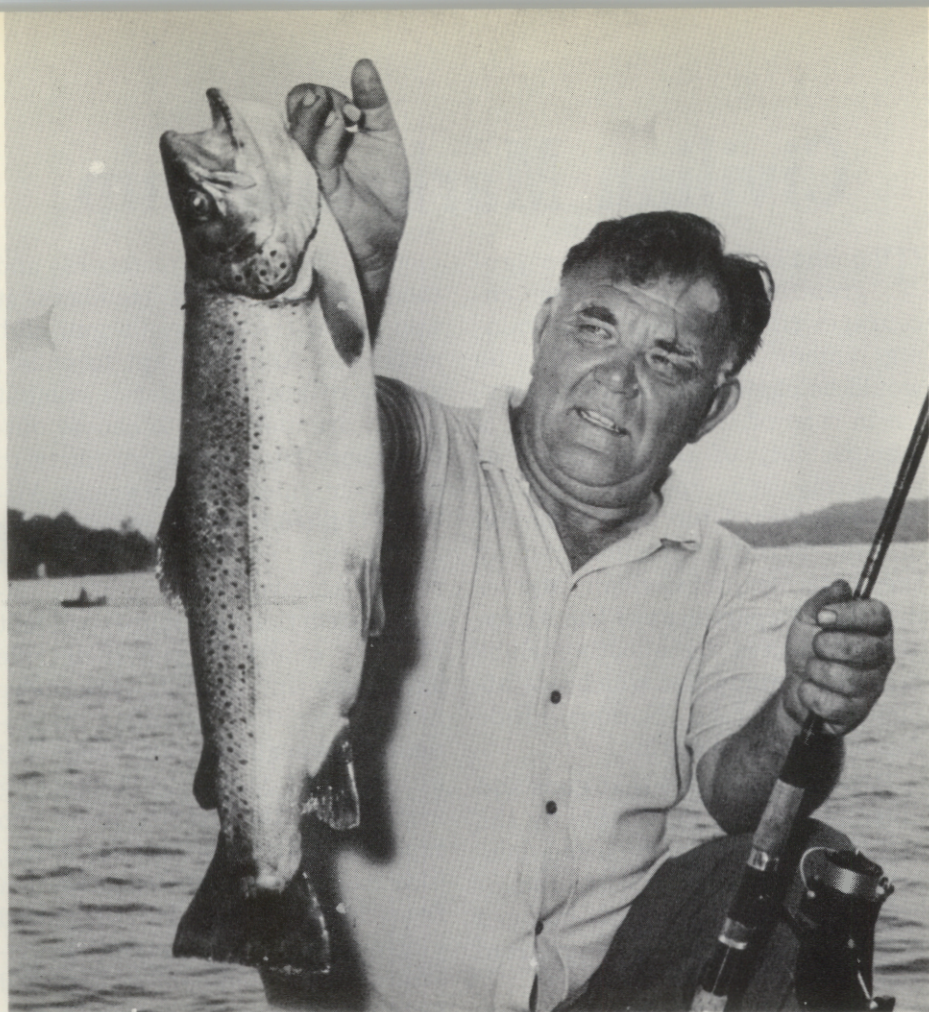
Other Games

In addition to formal trap and skeet, there are several other games which can help. Hand traps, which are small portable devices for throwing clay targets, can be carried anywhere, for example. Two people, one the thrower and the other the shooter, can get invaluable warm-up practice with these gadgets which can be used to simulate almost every type of field shot.

Field Situations

Quail walks and tower shoots are also good practice. In these games, clay targets are thrown from mechanical traps under conditions approximating field situations as closely as possible. Shooters do not know when the target will appear or often where.

No matter what type of clay target shooting you prefer, you can find a game that is lots of fun itself and that will make you a better all-round scattergunner.



Lunker Trout Biting

New Jersey's large northern lakes continue to produce catches of giant holdover brown and rainbow trout, as shown by this 8-pound, 13-ounce brownie taken from Lake Hopatcong. Mitchel Patynek of Mount Arlington caught the beauty on June 23 while trolling with herring bait. It measured $25\frac{1}{4}$ inches in length and $15\frac{1}{2}$ inches in girth. A few days later, another Hopatcong angler caught four trout all exceeding five pounds in weight.

Other lakes in which trout have held over and grown fat on herring forage include Greenwood, which holds the current records for brown and rainbow trout, and Big Swartswood, where 3 to 5 pounders were caught frequently during the spring of this year. Spruce Run Reservoir, where fast-growing Donaldson rainbows have been stocked, and Lake Wawayanda are believed to have similar potential for big trout. #

Civilian Marksmanship

The civilian marksmanship program in the United States encourages rifle marksmanship training among those civilians who would be eligible for military service in case of war. It is, by law, a responsibility of the Secretary of the Army. It is sponsored by the National Board for the Promotion of Rifle Practice, administered by the Director of Civilian Marksmanship, Department of the Army, and conducted by shooting clubs in local communities which are affiliated with the National Rifle Association of America.

Because of rumors that guns and ammunition made available by the U.S. Government were being misused, a private industrial and management research firm was engaged to completely review the program and investigate the charges.

The review and investigations have been completed, and the report includes, among other things, the following findings:

- Shooting experience, and particularly marksmanship instruction with military-type small arms, prior to entry into military service contributes significantly to the training of the individual soldier. Army trainees who were gun club members prior to entering the Army achieved significantly higher scores than trainees who did not belong to a gun club.
- In comparing other differences between trainees who were pre-

viously gun club members and those who were not members, it was found that previous gun club members: Are more apt to enlist; are more apt to prefer a combat outfit; are more apt to choose outfits where they are more likely to use their rifle (Infantry and Airborne); liked firearms and shooting more; had more shooting experience; received more marksmanship instruction; are more confident of their ability to use their rifle effectively in combat; are more likely to want to become a marksmanship instructor; and competed in more and higher level shooting matches. Of the 4,168 trainees who reported getting prior instruction, 57% said they got their instruction from a member of an organized gun club, and 47% said their instructor was either a qualified NRA instructor or a serviceman on active duty.

- The NBPRP and DCM programs contribute substantially to the emergence and development of competitors for international shooting competition. Military personnel who qualify for participation in the National Matches demonstrate a significantly higher level of reenlistment than Army personnel in general and also a higher reenlistment rate than that of the Regular Army.
- The DCM programs stimulate and support broader participation in organized shooting activities of

affiliated club members, 12 years of age and older, all over the country. Based on personal interviews with 100 DCM-affiliated clubs and with police and civic officials, no instances were found of direct orientation toward any political programs or extremist activities. Not a single incident was uncovered where a club or its members have been convicted of using firearms, ammunition, and/or government property improperly or where DCM arms have been used in a crime of violence. No evidence was found that any overt racial discrimination had taken place in any club visited.

- The report states that it is not only appropriate but essential that the NRA and the NBPRP achieve effective liaison and work closely together. The requirement that clubs enrolling with the DCM be affiliated with NRA is considered quite appropriate.
- The report also states that the

mission of the NBPRP is one of broad national significance. While the benefits of its programs are numerous and substantial, the potential benefits are even greater.

This complete justification of the civilian marksmanship program should be a matter of personal gratification to the thousands of loyal citizens in local shooting clubs who devote time and effort, without pay, to instruct civilians in rifle marksmanship. It should be a source of reassurance to those responsible for directing and funding the program. It should convince all concerned that the rifles loaned and the ammunition provided by the government make possible a valuable contribution to individual preparedness for national defense. It is the basis for the final conclusion of the report, that the NBPRP should continue, but with specific changes in its activities and administration as recommended in the text of the report. #

The DCM Program

Study reveals program to be generally effective and meaningful

In May of 1965, the Department of the Army engaged the services of Arthur D. Little, Inc., a private industrial and management research firm in Cambridge, Massachusetts, to completely review the civilian marksmanship program. Although no final action has been taken on the study, it will be the basis for further consideration by the Department of the Army Staff and the National Board for the Promotion of Rifle Practice to determine those actions necessary to carry out those recommendations which may be approved for implementation.

An article in the March issue of *The Rifleman*, "The DMC Program," contains some of the findings and recommendations of the official report. Portions of *The Rifleman* digest are printed below.

Major conclusions

Shooting experience, and particularly marksmanship instruction, with military type small arms

prior to entry into military service contributes significantly to the training of the individual soldier.

The DCM programs stimulate

. . . DCM Program

and support broader participation in organized shooting activities of affiliated club members 12 years of age and older all over the country.

There is a need for more direct and effective communication and interaction on the part of the DCM with affiliated clubs, especially clubs newly affiliated. More attention needs to be directed toward helping clubs get organized and adopt programs which will support and carry out the missions of the NBPRP and exploit fully the advantages of affiliation with the DCM as well as to assist in the screening of club officers and monitoring club activities in previously affiliated clubs.

The present system of funding the programs of the NBPRP and the DCM, including the same sources of budgetary support, appears to be quite appropriate.

We consider that the requirement that clubs enrolling with the Director of Civilian Marksmanship be affiliated with the National Rifle Association is quite appropriate.

Major recommendations

We recommend that a more international Board for the Promotion of Rifle Practice (NBPRP) should be continued with some minor changes in its organization and in the administration of the Office of the Director of Civilian Marksmanship.

The DCM should be established as the DCM Program Office and

given full program responsibility and authority for all activities related to its legal mission as prescribed in Army regulations and as directed by the NBPRP.

We recommend that a more inclusive system of accounts be set up so that the true cost to the government of the DCM programs can be accounted for on a regular and complete basis. This should entail provisions for credits to the DCM program for all revenues returned to the Federal Government.

The Department of the Army should provide for field representatives for the DCM.

The DCM should take primary responsibility for investigations made of clubs wishing to affiliate with the DCM.

Those aspects of the DCM program which relate to the stimulation of broader interest and participation in rifle shooting among the youth of our country should be emphasized more and pursued even more effectively in order to reach a greater percentage of those young men likely to enter military service.

Since there are no minimum marksmanship proficiency standards established for rifle units going into combat and since no one has yet been able to "price out" the value of achieving a given level of marksmanship proficiency in a rifle unit, we recommend that consideration be given to defining and carrying out needed research in this area. #

Do You Want To Hunt This Fall?

If you are between the ages of 14-21 and do not have a previous Hunting License you cannot obtain a current license unless you present a signed certificate showing you have successfully completed a course in Gun Safety. Do not wait until hunting season is here to get your certificate. Contact a Conservation Officer, the Division of Fish and Game Office, or any license issuing agent immediately and get the name and address of the Hunter Safety Instructor nearest you and take your course now.

Get Your Dog Ready for Hunting Season

If you are a hunter and you have a dog to hunt with, begin now to get him ready for that fall season you're looking forward to.

Condition

If your dog has done nothing but loll around the house or rest in his kennel most of the time during these summer months, he can't very well be in condition for a day in the field. He must have a chance to get those muscles hardened, his legs limbered and his whole system toned up for the work he is to do. Otherwise, he may "fold up" after a few minutes or, as so often is the case, be so sore and stiff after the first day that he will need time to recover. Unaccustomed exertion can even cause a "fit" in the field.

Exercise

Take your dog out for exercise, gradually increasing it daily, from now on. Use the coolest times of day, early morning and evening. You can usually find places where you can take a dog for a run. Even long walks on a leash will help a lot in conditioning your dog.

Dog's Health

Remember, too, that your dog's general health is an important consideration. Have your veterinarian

give him a physical check-up. Worms, for example, can drastically undermine your dog's strength and, if necessary, treatment can be finished before the hunting season comes around. Also important is a booster shot against distemper.

Rabies Prevention

Hunting dogs are bound to be exposed to other dogs and to places where the virus may exist. And, since it is known that rabies exists in wildlife, hunting dogs should have shots against this dread disease. When he's a distance away and in dense cover you have no way of knowing, until too late, if your dog has been bitten by a rabid rodent or some other animal.

Food

And when you start out in the morning, take along one of the ready-to-feed, soft-moist dog foods. They are packaged so they are easy to carry, even in a pocket. Then, when you stop for a sandwich or a rest, you can feed your dog, too. He will be much fresher at the end of the day if he has some food now and then to keep up his energy.

Taking the right care of your hunting dog will reward you a hundred times over. #

Please give your CORRECT POST OFFICE ADDRESS and ZIP CODE
for change of address, new subscriptions, and renewals.

If your post office address is different than your municipal address,
please make certain that you send us your post office address.

Your Trophy and the Taxidermist

Hamilton Studios
Don Smith, Photographer

If you think that mounted trophy on your wall is an example of your ability as a sportsman you're only half right. It's also the ability of a talented taxidermist to do his job well.

Let's say you've just returned from a hunting trip and you have a deer. What do you do with it now?

First is a trip to the butcher with the animal, where it will be skinned except for the head and legs. The meat is usually prepared for freezing and many meals should be enjoyed in the future.

Next is a trip to the taxidermist's studio with the hide, head, and legs. The taxidermist will skin the head and legs after carefully taking the deer's measurements.

The most popular thing to do is to have the head mounted but there are many other possibilities for turning your kill into a trophy you will always remember.

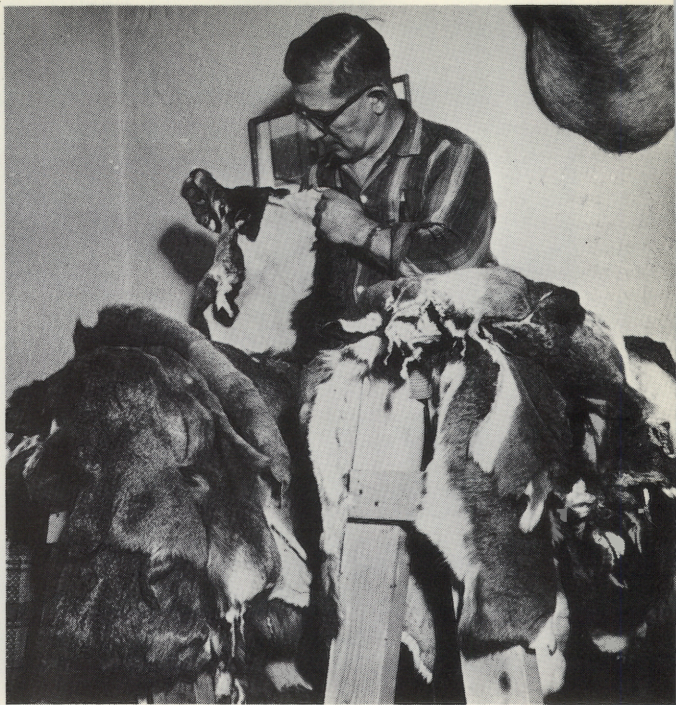
The legs can be used to make a lamp or maybe a gun rack for your den. If you have deer heads mounted and couldn't fit another one on your walls you may want to turn the antlers into a carving set. The hide could be used to make gloves or a pocket book for your wife. It could be used also to cover a table or jewelry box.

Whatever you decide to have done with your kill you can be sure it will get the full attention of an experienced and talented taxidermist.

The taxidermist will send all the hide to a tanner to have it properly salted and tanned after he has completed the job of cleaning it and measuring it.

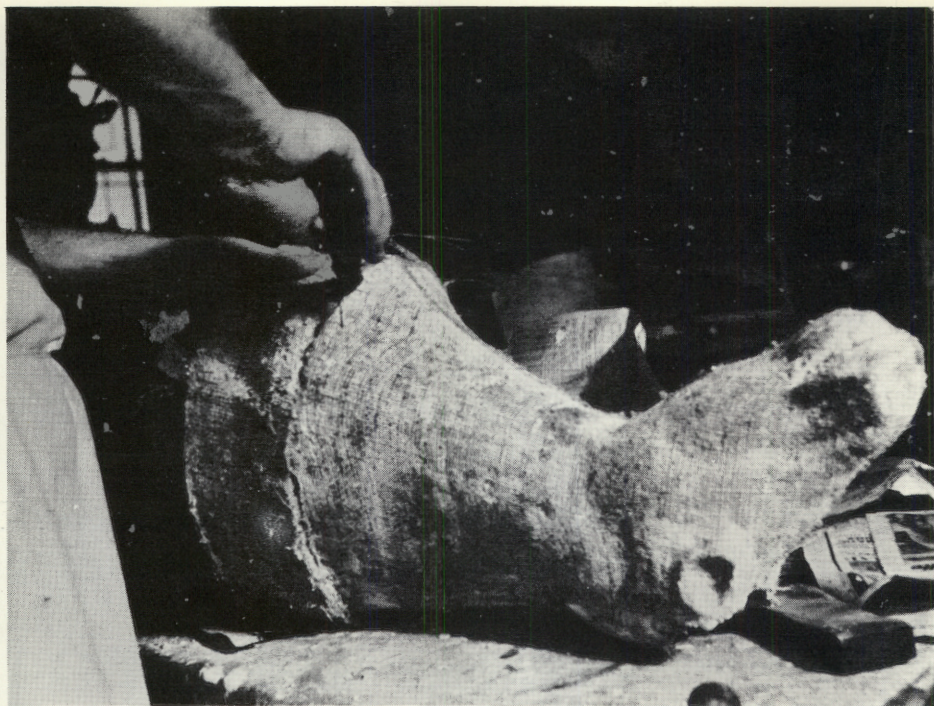
Then he starts the process of making a form or mold for the head if it is to be mounted. This form is usually hand made and carved out of burlap and plaster. This is where the taxidermist must use his artistic talent as a sculptor to form the head the same size and shape as the deer you killed. #

*The taxidermist,
at right, checks deer
hides that are to be
processed and made
into useful trophies
of the hunt*



*The studio, below,
is a beehive of activity
as each worker performs
his general tasks and
practices his specialty*

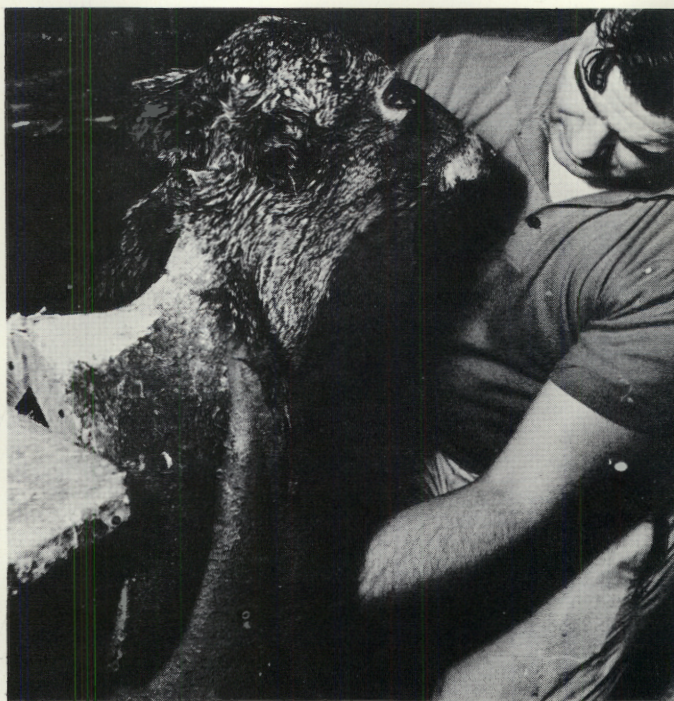




. . . Your Trophy and the Taxidermist

*The taxidermist
builds the form, above,
to the measurements
taken from the
natural head*

*The skin from the
head and neck, right,
are draped and shaped
over the manikin*



*Artificial ears for
natural looking deer
head mounts are
fabricated by the
artist, at right*

*Deer feet, below,
are prepared to be
set to form
serviceable
gun racks or
clothes hooks*



Sweet Gum

(*Liquidambar styraciflua*)

Sweet gum, red gum, ling, bilsted—they are all the same tree. It is the only tree in New Jersey with a star-shaped leaf. It belongs to the same family as witch hazel.

Forest neighbors of the sweet gum are the red maple and black gum. All of these trees like moist bottom land soils. They will even grow in standing water for short periods of time; so look to the wet soils for sweet gum. Sweet gum reseeds naturally, often forming dense forests when it is young.

Range:

This tree is generally a coastal plain species. It lives, however, from southern Connecticut to Florida and west through central Ohio, southern Illinois, Missouri, and Arkansas, and eastern Texas.

Leaves:

It has a star-shaped leaf that cannot be confused with a leaf of any other tree. (See figure A.) The leaves are attached alternately on a twig, 3 to 5 inches long, and often wider than long.

Occasionally the leaves may have 7 lobes instead of the usual 5, two of the lobes being small and located at the base.

Twigs:

Hairy at first, smooth later on and light brown to dark-reddish brown. The twigs are roughened by raised leaf scars. (See figure B.) After the second year the twigs often grow corky-winged projections. (See figure D.) There are other trees that have winged projections, but the combination of the star-shaped leaf and the wings on the twigs make it a "marked tree."

Flowers:

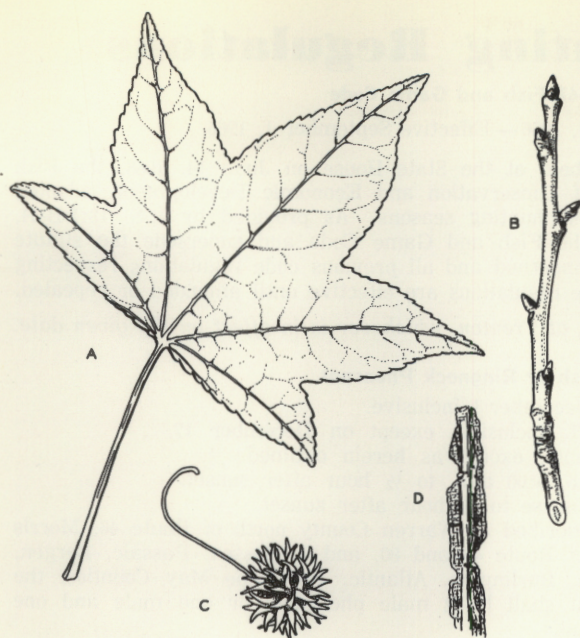
Staminate and pistillate occur separately on the same tree. In early spring the greenish flowers, in clusters 2 to 3 inches long, produce the pollen for the greenish, seed-producing flower that develops into the ball-like fruit.

Fruit:

The fruit looks like a little ball hanging at the end of a string. The ball is about 1 to 1½ inches in diameter and is made up of many capsules having a spiny appearance. (See figure C.) Often the balls hang on the tree far into the winter.

Uses:

In addition to being a very attractive ornamental, it is also a valuable timber tree. Average trees reach 2 to 3 feet in diameter and 50 to



Sweet Gum

- A. Leaf
- B. Twig
- C. Fruit
- D. Twig, with winged projections

75 feet in height. Heights of 150 feet and diameters of 4 to 5 feet have been attained.

The trees are often sawed into short logs, then peeled into veneer and made into baskets. Many New Jersey peach baskets are made from sweet gum.

Veneer and lumber of this tree is used for furniture and general construction. The wood can be stained to resemble more expensive hardwoods. The hardwood is sometimes called satin walnut.

When incisions are made in the tree, a resin is given off. The resin is almost identical to Oriental storax used for perfume. #

—Austin N. Lentz, *Extension Specialist in Farm Forestry,*
Rutgers—*The State University*
Drawings by Aline Hansens

Ducks Unlimited, an organization of sportsmen started in 1937, has rebuilt and restored more than a million acres of prime waterfowl habitat. DU members have also planted thousands of acres in waterfowl food. All of the funds have come from sportsmen and will help assure the future of waterfowl in America. An added benefit of DU programs is that hundreds of non-hunted species of game such as shore birds, swans, and marsh birds survive because of DU habitat development. Anyone who enjoys wildlife is indebted to DU projects.

1966 Hunting Regulations

1966-67 Fish and Game Code

Adopted June 14, 1966 — Effective September 1, 1966

Following the public hearing held at the State House on June 14, 1966, the Fish and Game Council, Department of Conservation and Economic Development, adopted the following regulations for 1966-67 hunting seasons. As provided by R.S. 13:1-B-34, these regulations are known as the Fish and Game Code and supersede the statute laws insofar as these items are concerned and all previous code regulations respecting hunting are hereby rescinded. Code regulations are effective until amended or repealed.

The hours listed are EST or EDT, at Trenton, whichever is in effect on the given date.

English or Ringneck Pheasant

- Duration:** November 5—December 3, inclusive.
December 12-31, inclusive, except on December 17.
- Daily bag limit:** 2 male pheasants, except as herein outlined.
- Hunting hours:** On November 5, 9:00 a.m. to ½ hour after sunset.
Other days, sunrise to ½ hour after sunset.
- Hen pheasants:** In the area described as Warren County north of Route 46, Morris County north of Route 46 and 80, and in Sussex, Passaic, Bergen, Hudson, Ocean, Burlington, Atlantic, and Cape May Counties, the daily bag limit shall be 2 male pheasants or one male and one female pheasant.
Unlawful to take or attempt to take female pheasants elsewhere.

Cottontail Rabbit, Jack Rabbit, and Hare

- Duration:** November 5—December 3, inclusive.
December 12—31, inclusive, except on December 17.
- Daily bag limit:** 1 Jack rabbit or hare, 4 rabbits. No season limits.
- Hunting hours:** On November 5, 9:00 a.m. to ½ hour after sunset.
Other days, sunrise to ½ hour after sunset.

Ruffed Grouse and Squirrel

- Duration:** November 5—December 3, inclusive.
December 12—February 4, inclusive, except on December 17.
- Daily bag limit:** 3 grouse, 5 squirrel. No season limits.
- Hunting hours:** November 5, 9:00 a.m. to ½ hour after sunset.
Other days, sunrise to ½ hour after sunset.

Quail

- Duration:** November 5—December 3, inclusive.
December 12—February 4, inclusive, except on December 17.
- Daily bag limit:** 7 quail. No season limit.
- Hunting hours:** November 5, 9:00 a.m. to ½ hour after sunset.
Other days, sunrise to ½ hour after sunset.

Wild Turkey, Otter, and Beaver

It shall be illegal to possess, take, kill, or attempt to kill a wild turkey, otter, or beaver at any time.

Mink, Muskrat (trapping only)

- Duration:** North and west of U. S. Route 1: 6:00 a.m. on November 15—March 15, inclusive, except on State Public Shooting and Fishing Grounds. South and east of U. S. Route 1: 6:00 a.m. on December 1—March 15, inclusive, except on State Public Shooting and Fishing Grounds. On State Public Shooting and Fishing Grounds: 6:00 a.m. on January 1—March 15, inclusive. No stakes or traps shall be set before that time.

Raccoon Trapping

- Method:* The trapping of raccoon shall be permitted as a furbearing animal under a regular firearm hunting license.
- Duration:* North and west of U. S. Route 1: 6:00 a.m. on November 15—March 15, inclusive, except on State Public Shooting and Fishing Grounds. South and east of U. S. Route 1: 6:00 a.m. on December 1—March 15, inclusive, except on State Public Shooting and Fishing Grounds. Trapping of raccoon will be permitted on tidal meadows and tidal impoundments of State Public Shooting and Fishing Grounds after 6:00 a.m.—on January 1—March 15, inclusive.
- Raccoon may be trapped at any time of year under special permit when causing damage.
- Bag limit:* No daily bag limit. No season limit.

Trapping

No trap of any kind shall be set anywhere unless it bears a metal tag inscribed with the name and address of the owner of the trap, except for traps set on posted private property by the owner or lessee thereof. No trap of any kind shall be permitted to remain set on any property at the close of the trapping season. No body-gripping trap with jaw spread larger than 5 inches shall be used anywhere.

No cage trap, metal box trap, or diving trap shall be permitted on any of the State Public Shooting and Fishing Grounds. Regular firearm hunting license is required to trap furbearing animals.

All traps must be tended at least once in every 24 hours.

Raccoon Hunting

- Duration:* 1 hour after sunset on September 24 to 1 hour before sunrise, March 12, 1967, except the nights of December 16 and 17, 1966.
- Hunting hours:* 1 hour after sunset to 1 hour before sunrise. Cannot hunt raccoon during firearm deer season.
- Dog training:* There will be no raccoon dog training season prior to the opening of the raccoon hunting season.
- Bag limit:* No daily bag limit. No season limit.

Woodchuck

- Duration:* March 11—September 30, 1967, inclusive.
(Properly licensed hunters may take woodchuck during upland season with shotgun or bow and arrow.)
- Hunting hours:* Sunrise to ½ hour after sunset.
- Bag limit:* No limit.
No rifle hunting on State Public Shooting and Fishing Grounds.

Fox

- Duration:* North and west of U. S. Route 1: November 5—April 29, inclusive. South and east of U. S. Route 1: November 5—March 31, inclusive. May not hunt with dogs during regular firearm deer season, or on December 17.
- Hunting hours:* November 5, 9:00 a.m. to ½ hour after sunset. Other days: Sunrise to ½ hour after sunset; Firearm deer season: 7:00 a.m. to 5:00 p.m. May be trapped at any time of year when destroying poultry, crops, or property.

Dogs

No exercising or training of dogs on State Public Shooting and Fishing Grounds May—August 31, inclusive, and on November 4, and on the following Sundays: Nov. 6, 13, 20, 27, Dec. 4, 11, 18, and 25.

. . . 1966 Hunting Regulations

Squirrel and Raccoon Damage

Property owners, or their designated agents, and occupants of dwellings that are suffering damage from squirrel or raccoon, may control these animals by any method and at any time, subject to legal firearm ordinances in the following counties and municipalities, or elsewhere by permit:

Bergen—All of the county.

Essex—All of the county.

Hudson—All of the county.

Union—All of the county.

Middlesex—City of New Brunswick and area North of Raritan River.

Morris—Only Madison, Chatham, Florham Park, Dover, Boonton, Morristown, Morris Plains, and Morris Township.

Gloucester—Borough of Pitman, Woodbury City, and Wenonah Borough.

Passaic—Only Clifton, Passaic, Paterson, Townships of Wayne and Little Falls, and Boroughs of West Paterson, Pompton Lakes, Prospect Park, and Haledon, Hawthorne, and North Haledon.

Camden—Only Boroughs of Audubon, Barrington, Bellmawr, Brooklawn, Collingswood, and Haddonfield, and Audubon Village, Gloucester City, Haddon Heights, Merchantville, Mt. Ephraim, Oaklyn, Runnemede, Woodlynne, Camden City, and Haddon Township.

Burlington—Moorestown, Mt. Holly, and Maple Shade.

Monmouth—East of the Garden State Parkway.

Mercer—City of Trenton, Borough of Princeton, and Ewing Township.

Cumberland—Bridgeton and that portion of Vineland bounded by Wheat Road on the north, Lincoln Avenue on the east, Sherman Avenue on the south, and Delsea Drive on the west.

Ocean—East of the Garden State Parkway south to and including Toms River.

Somerset—North Plainfield Borough.

Firearms, Missiles, etc.

Illegal for any hunter to have in his possession in woods, fields, marshlands, or on the water, any shell or cartridge with missiles of any kind larger than No. 4 fine shot except during the firearm deer season, and except that waterfowl hunters in tidewaters and tidewater marshes may possess and use shells loaded with No. 2 or smaller fine shot.

At all times it shall be illegal to have in possession any shotgun shell which has been cut or the loaded pellets therein strung, held together with wax, or joined in any manner with any substance or material.

Illegal to use in hunting fowl or animals of any kind, any shotgun capable of holding more than three shells at one time, or that may be fired more than thrice without reloading.

From December 5 to December 10, inclusive, and on December 17, it shall be illegal to use any rifle or firearm of any kind of a smaller caliber than 12 gauge or to have in possession any firearm missile except buckshot, or to hunt between 5:00 p.m. and 7:00 a.m., or to hunt deer with a dog. (This does not preclude a person legally engaged in hunting waterfowl only, from being possessed solely of shotgun and nothing larger than No. 4 fine shot, or No. 2 fine shot in tidewaters and tidewater marshes.)

This section is amended to include liberated game animals, as well as game birds, and native species, under field trial provisions; dogs shall include hounds, bird dogs, and retrievers.

Illegal to hunt, hunt for, or attempt to capture, kill, injure, or destroy game birds or animals except at the time and in the manner provided by fish and game regulations.

The prohibition against shooting waterfowl or placing a boat or other structure

at a greater distance than one hundred feet from shore shall not apply in Raritan and Sandy Hook Bays, or the Atlantic Ocean. (Sinkbox prohibited by U. S. Regulations.)

Wild waterfowl, migratory game birds, rabbits, hares, jack rabbits, squirrels, grouse, pheasants, and quail shall not be hunted for or taken on Sunday. However, pheasants, quail, chukar partridge, and turkey may be hunted for or taken on Sunday on semi-wild and commercial shooting preserve lands that are properly licensed for the taking thereof.

Written permit must be secured from the Division of Fish and Game before the owner or lessee or designated agent of any land may destroy deer which may be causing damage on that land.

It shall be unlawful for any person to have in his possession or under his control any gun or firearm at any time while hunting any wild bird or animal with a long bow and arrow.

No person shall, for the purpose of hunting for, pursuing, taking, or killing, or attempting to hunt, pursue, take or kill any bird or animal, have, in an automobile or vehicle of any kind, **any firearm** loaded with missiles of any kind, under a penalty of \$20.00 for each offense.

For the purpose of this act, whenever a person is found with such loaded firearm in possession in a vehicle, the same shall be conclusive proof that the person was in the act of pursuing or taking birds or animals.

Bow and Arrow

Bow and arrow means longbow only. All crossbows or variations thereof are prohibited.

It shall be illegal to use a longbow and arrow for hunting on December 17, or between ½ hour after sunset and ½ hour before sunrise during the Longbow and Arrow Deer Season, or between ½ hour after sunset and sunrise during other seasons.

During the longbow and arrow seasons for taking deer and bear, October 1 to November 3 and December 5 to December 10, all arrows carried in the woods and fields must be fitted with an edged head of the following specifications:

Minimum width shall be ¾ inch—maximum, 1½ inches.

Minimum length shall be 1½ inches on main cutting edge.

Cutting edges shall be of well-sharpened metal only.

The bow must have a minimum draw pull weight of 35 pounds and cast a legal hunting arrow 125 yards to a point of similar elevation.

It is illegal at all times to discharge an arrow from or across a state, county, or municipal highway or roadway, or within 300 feet of any occupied dwelling, except with permission of the owner or lessee. It is illegal to use a bow and arrow from any vehicle, moving or stationary.

Deer—Longbow and Arrow, exclusively (either sex)

Duration: October 1—November 3, inclusive.
Bag limit: One deer of either sex.
Hunting hours: ½ hour before sunrise to ½ hour after sunset.

Bear—Longbow and Arrow, exclusively

Duration: October 1—November 3, inclusive.
Bag limit: One bear a year (whether taken during firearm or bow season). Kill must be reported to Division within 24 hours.
Hunting hours: ½ hour before sunrise to ½ hour after sunset.

Bear—Firearm or Longbow and Arrow

Duration: December 5—December 10, inclusive.
Bag limit: One bear a year (whether taken during bow or firearm season). Kill must be reported to Division within 24 hours.
Hunting hours: 7:00 a.m. to 5:00 p.m.

. . . 1966 Hunting Regulations

Deer—Firearm or Longbow and Arrow

(antlered only, except in area designated as Hunter's Choice, described below)

Duration: December 5—December 10, inclusive.
Bag limit: One deer for the season, with antler at least three inches in length, whether taken by gun or longbow.

Hunter's Choice area is described as follows: East of Route 202 from New York line to Pompton Lakes, east of the Pompton River to its junction with the Passaic River, east of the Passaic River to Somerset County line, north and east of that line to Middlesex-Union County line, east of that line to the Raritan River, and north and east of the Raritan River to Raritan Bay. In this area, consisting of portions of Bergen, Union, Passaic, Essex, and Middlesex Counties, a properly licensed person will be permitted to take a deer of either sex and any age.

A person who has legally taken a deer during the special longbow and arrow season can legally take an antlered deer with a shotgun during the interval of December 5 to December 10 if he possesses his valid firearm license, but he may not take another deer with a bow. Only one deer may be taken during this season, whether by gun or bow. December 5—December 10, inclusive, 7:00 a.m. to 5:00 p.m. with gun or longbow.

Hunting hours:

Deer—Special Permit, firearms only (either sex)

Duration: Saturday, December 17.
Bag limit: One deer of either sex, any age.
Hunting hours: 7:00 a.m. to 5:00 p.m.
Method:

The taking of one deer of either sex with a firearm under a Special Deer Permit, in addition to the legal antlered deer allowed under State-wide buck season and buck/doe allowed under the State-wide longbow and arrow season, will be permitted in designated counties by holders of a Special Deer Permit. Permits will be issued on an individual basis to holders of valid 1966 firearm licenses. The permit consists of a back tag and a transportation tag. The back tag portion of the permit will be conspicuously displayed on the outer clothing in addition to the valid firearm license. Any deer killed must be tagged immediately with the transportation tag. This transportation tag allows legal transportation of the deer of either sex to a State deer checking station only. State personnel at the checking station will issue a possession tag. Any permit holder killing a deer of either sex on December 17, 1966, must transport this deer to a State-operated checking station by 7:00 p.m. on December 17 to secure the legal possession tag. The possession of a deer of either sex after 7:00 p.m. on December 17 without a legal possession tag shall be deemed illegal possession.

The procedure for permit application and issue shall be as follows:

Applying for a Special Deer Permit

1. Only holders of valid 1966 Firearm Hunting Licenses may apply on forms provided for a Special Permit.
2. Application forms may be obtained from:
 - a. Division of Fish and Game, P.O. Box 1809, Trenton, N. J. 08625.
 - b. License issuing agents.
 - c. Conservation Officers.
3. Only one application may be submitted by any individual.

4. Fill in the application form to include: name, address, 1966 firearm hunting license number, county applied for, name of license issuing agent where 1966 hunting license was purchased, and any other information requested. Application forms will be accepted by mail only, in the Trenton office, during the period of September 14 to September 23, 1966, inclusive. *DO NOT SEND FEE WITH THE APPLICATION.* Selection of permittees will be made on the basis of a random selection of IBM cards. Applications may not be made in person and no archery or juvenile license may be used.
5. Unsuccessful applicants will not be notified. Any permit obtained by fraud shall be void.
6. Successful applicants will be notified by mail. The IBM card and the permit fee of \$2.00 in the form of a money order made payable to "Division of Fish and Game" must then be returned by mail before October 21, 1966. The Special Deer Permit will then be issued. Permits not claimed by October 21 will be immediately reallocated in the same random manner as the original selection and be returnable within two weeks thereafter.

Use of Special Deer Permit

The permit is valid only in the county designated and is not transferable.

Special Deer Permit Areas and Number of Permits to be Issued

County	Permit Quota
Atlantic	940
Burlington	1,500
Camden	150
Cape May	200
Cumberland	420
Gloucester	100
Hunterdon	1,950
Mercer	380
Middlesex	210
Monmouth	370
Morris	1,370
Ocean	1,360
Passaic	230
Salem	180
Somerset	680
Sussex	1,430
Warren	1,280
	12,750

Regulations Pertaining to Exotic Wildlife

In accordance with this section the following regulation is adopted:

Any person wishing to import any exotic live wild game birds, game, furbearing animal, or mammal, must first secure an importation permit from the Director of the Division of Fish and Game. No such permit shall be issued to any person desiring to import wild birds or mammals from any foreign country until such person has secured the necessary federal permits from the U. S. Fish and Wildlife Service.

The Director is authorized, at his discretion, to modify, suspend, or revoke any permit issued under this section for any violation of the Fish and Game Laws, for any violation of regulations, for misuse of the permit, or whenever he deems it to be in the public interest.

#

These 1966 Hunting Regulations are presented merely
for your convenience in planning vacations and hunting trips.

Consult Compendium and Game Laws for Details and Laws in Full

Council Highlights

June Meeting

The open session of the regular monthly meeting of the Fish and Game Council was held in Trenton on June 14. The Council members present included: Chairman Hart, Councilmen Alampi, Cane, McCloskey, Reid, Space, Totten, and Richardson. Councilmen-elect Ralph Allocca and Raymond G. Wilson were present at the meeting. In addition to members of the staff the following persons also attended: Edmond Shuler, John Russack, Bill Backus, and Al Toth.

Hen Pheasant Season

A letter from Edwin Cooper, Secretary of the Southern Region of the State Federation of Sportsmen's Clubs, expressing opposition of the Southern Region to the shooting of hen pheasants was read. This letter was to receive consideration when the Code was adopted.

The Gun Bill

The recently-enacted gun bill and its possible effects on hunting and fishing were discussed. It was moved and passed that a request be sent to the Attorney General for a clarification of the provisions of this measure as it applies to all aspects of hunting and fishing.

Control of Pollution

Councilman Richardson reported that prospects look favorable in regard to efforts in his locality to control pollution affecting the Navesink and Shrewsbury Rivers and Raritan Bay. A contact made with the local Congressman indicated an interest in maintaining clean waters.

Fishermen's Forum

Director MacNamara advised that, in accordance with previous action of the Council, a letter has been sent to Rutgers University asking for their opinion on the feasibility and possibility of carrying out a fishermen's forum at the University next January or February, similar to the forum held at the University of Rhode Island this year.

Rancocas Creek Dam

The question of responsibility for the repair of the Smithville Dam on Rancocas Creek in Burlington County was discussed. In the past the Division of Fish and Game did contribute to the cost of improvements to this dam. However the Division of Fish and Game has no jurisdiction over this structure. While the Division does have a deep interest in the fishing opportunity provided, it does not have funds available for this purpose. It was suggested that the local municipality contact the

Division of Water Policy concerning the repair and maintenance of this structure. In the meantime, Director MacNamara was to contact the Water Policy Division in this regard.

Young Wildlife

Councilman Space called attention to the great number of instances where persons pick up young animals, believing they have been deserted by their parents. He urged that increased publicity be sent out calling the attention of the public to the fact that these baby animals are not deserted, that the parent is usually hovering out of sight, and that the animals should be unmolested.

Goggle Fishing

William Ker, Bruno Batista, and Jack Fullmer appeared before the council regarding an interpretation of the law respecting the taking of striped bass by goggle fishermen. The law states that goggle fishing is defined as the taking of fish by means of a spear, harpoon, dart, arrow, or other missile hand held and hand propelled by the fisherman while he is completely submerged in the water. They displayed several types of gear used over the past 15 years by goggle fishermen for taking fish and requested an opinion as to their legality.

Following discussion, a motion was made by Councilman Alampi that an interpretation in this regard be obtained from the Attorney General. The motion was seconded by Councilman Reid and passed.

The question was raised concerning further use of these devices pending receipt of the opinion from the Attorney General. It was moved that, until an official opinion is received, the goggle fishermen be allowed to continue to fish with the gear used during the past several years. The motion was seconded and passed.

Coastal Patrol

Newman Mathis, Chief of the Coastal Patrol, reported that dragging activity had increased along the coast during the month. At the time two patrol boats were operating in Raritan Bay and no trouble had been experienced in this area. Porgies had not been over-abundant and the fishing pressure was light. Gill netters in Delaware River were fortunate in taking large drum fish, and a large concentration of striped bass was available to sport fishermen off Monmouth Beach. Personnel of the Coastal Patrol Unit assisted the Bureau of Fisheries with the shad and menhaden study being conducted in Delaware Bay.

Fisheries Management

Robert Hayford, Chief of the Bureau of Fisheries Management, reported that 435,000 fish were stocked from the hatchery as of June 10. Stocking was to continue and the number of fish stocked at the

. . . Council Highlights

close of stocking operations would total approximately 600,000, including fish received from the national fish hatcheries.

Wildlife Management

It was reported by George Alpaugh, Chief of the Bureau of Wildlife Management, that a pheasant call count carried on by personnel of that bureau in several locations throughout the state indicated a good crop of pheasants in the wild. It was noticeable from the survey that in those areas regarded as good pheasant habitat, the count was higher than in other areas.

In reply to an inquiry concerning prohibiting swimming in Logan Pond, Chief Alpaugh advised that an order had been issued to personnel to post signs prohibiting swimming in all waters on the Public Hunting and Fishing Grounds.

Public Relations

William Peterman, Public Relations Supervisor, reported that his unit continued to operate short-handed. The majority of programs during May related to conservation education and were presented before schools and camps. A large exhibit was installed in Atlantic City at the Governor's Conference on Natural Beauty. #

Subscribe to New Jersey Outdoors

New Jersey Outdoors, P. O. Box 1809, Trenton, N. J. 08625

Please enter my subscription (at \$2.00 per year) for 1 year 2 years
 3 Years For \$5.00 new renewal

Name

Street

Post Office State Zip Code.....

Please send a gift subscription (at \$2.00 per year) for 1 year 2 years
 3 Years For \$5.00 new renewal

To:
Name

Street

Post Office State Zip Code.....

From:

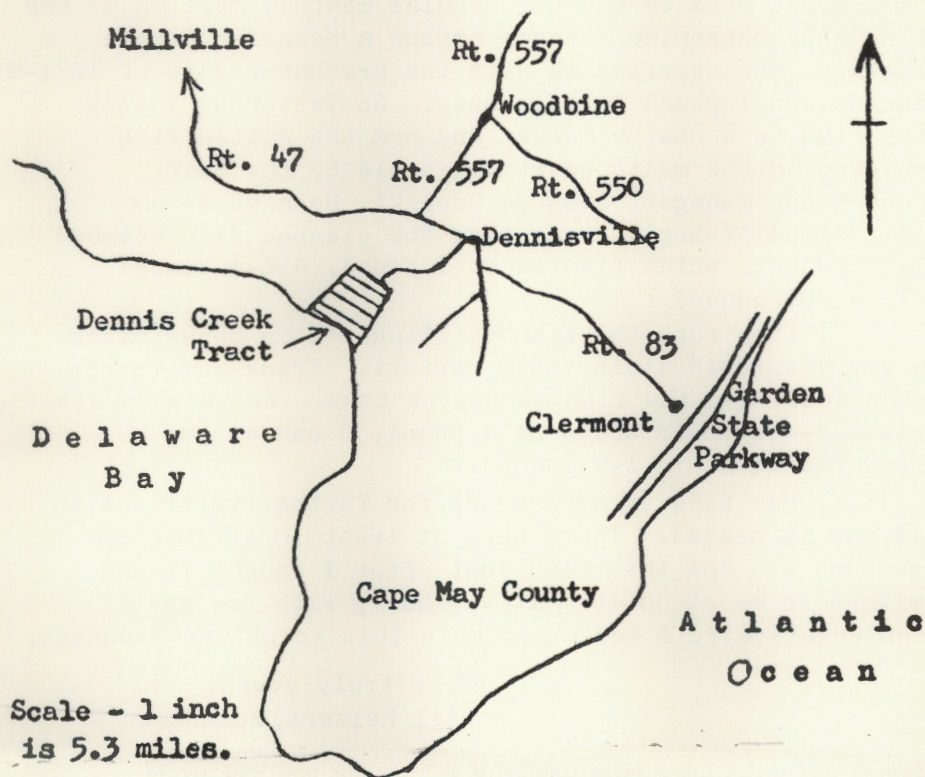
Guide to the

Dennis Creek Tract

The Dennis Creek Public Shooting and Fishing Grounds is located in Cape May County and comprises about 1,162 acres of tidal marsh. This tract is bounded on the south by Dennis Creek, on the west by Delaware Bay, on the north by Belleplain State Forest, and on the east by Jake's Landing Road.

Waterfowl hunting is the primary activity on this tract and some of the best muskrat trapping in southern New Jersey can be found in this area. There is a boat launching site on Dennis Creek which provides access to Delaware Bay.

To reach the Dennis Creek Tract, drive to Woodbine, which is located at the junction of Route 550 and Route 557 in the center of Cape May County. From Woodbine, take Route 557 south about four miles to Route 47; turn left and proceed about two miles; take the first right on Jake's Landing Road; and, then proceed two miles to the entrance of the tract.



Big Rock Bass

Walter Frank
Daily Home News
New Brunswick, N. J.

Dear Walter,

I believe I have caught a record fish--a rock bass. This fish was caught in the Musconetcong River near the Riverside Tavern on Saturday, May 28, during our New Brunswick Rod and Gun Club annual trout picnic. I hooked it at the broken dam on a C. P. Swing and worm using a fly rod. It measured 14 1-2 inches. Unfortunately, I gutted it soon afterwards after showing it to several club members and noted that it was heavy with roe and that it had a bright red eye.

I then put it in the freezer and, failing to find a sporting goods store which had a rock bass contest division and also one that was even interested, I forgot about it--almost.

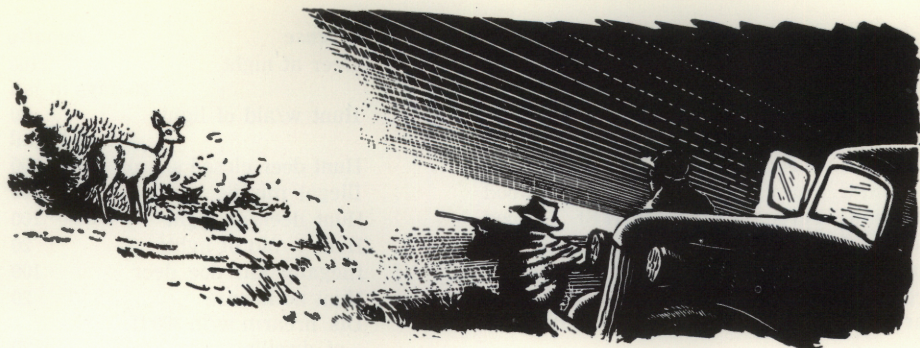
Last week we had our regular monthly meeting of the Club and, happening to come across a Schaefer Record Booklet, was startled to note the present record of 12 1-2 inches and 1 pound 1 1-4 ounces. So yesterday I took the fish to a nearby market and had the gutted fish weighed on the meat department scale by the meat department manager, Stephen Boroski. He gave me an initialled ticket showing that the cleaned fish weighed 1.39 pounds, which figures to 1 pound, 6 1-4 ounces (less .01 ounce).

I then took the fish to Efinger's in Bound Brook where I entered it in their contest. Frank was there and identified the fish as a rock bass. We weighed it--cleaned--on their scale as 1 pound, 5 ounces and measured it as 14 1-2 inches.

It is now back in my freezer for further verification if any is needed. There were at least 10 or 12 Club members who saw this fish just after I caught it and witnessed me clean it. It was heavy with roe and conservatively, I would estimate this weight at 2 ounces.

Very truly yours,
Bill Reisert, Somerset

Editor's Note: This fish is being considered as a possible new state record.



Violators Roundup

<i>Defendant</i>	<i>Offense</i>	<i>Penalty</i>
Frederick Danner, Jr., Box 383, Alloway	Uncased weapon	100
Frederick Danner, Jr., Box 383, Alloway	Hunt deer closed season	100
Edgar D. Danner, Lincoln Road, Woodstown	Uncased weapon	100
Edgar D. Danner, Lincoln Road, Woodstown	Hunt deer closed season	100
Ahmet Tosun, 94 7th Ave., Newark	Hunt no license	20
Carl Conrod, 37 President St., Newark	Hunt no license	20
Cono A. Morella, 1030 Front St., Plainfield	Illegal firearm	20
Joseph Siligato, 119 S. Madison Ave., Hammonton	Poss. parts of deer unlawfully	100
Joseph Siligato, 119 S. Madison Ave., Hammonton	Deter CO from duty	100
Martin J. Davis, 567 No. 36th St., Camden	Fish no license	20
Tom Bernot, Rt. 73 & Church Rd., Mt. Laurel	Possession illegal deer	100
Raymond Mead, 339 W. Park Dr., Bridgeton	Loaded gun in auto	20
Earl Hochenbury, 1025 S. 4th St., Millville	Hunt w/aid of lights	20
Augustine Russo, 314 184th St., Cardina, Calif.	Hunt no license	20
Lester Garrison, Jr., 23 Main St., Dividing Creek	Attempt to take muskrats illegally	20
John F. Polillo, 132 Drumbed Rd., Villas	Illegal poss. doe deer	100
Robert A. Lowry, 365 Magnolia St., Salem	Hunt no license	20
Elvis Gaines, 842 Garwood Rd., Sicklerville	Loaded gun in auto	20
Nora Benword, Box 352, R.D. No. 1, Newton	Loaded gun in auto	20
Nora Benword, Box 352, R.D. No. 1, Newton	Loaded gun in auto	20
Nora Benword, Box 352, R.D. No. 1, Newton	Dis. firearm upon country road	20
Nora Benword, Box 352, R.D. No. 1, Newton	Shoot doe deer	100
Hilarion C. Venero, 106 Beech St., Paterson	Fish no license	20
Marno Mani, Dante Ave., Vineland	Lcaded gun in auto	20
Louis P. Cello, 29 Bergen Ave., Hillsdale	Tip ups not marked	20
George Kuehn, 945 Black Oak Ridge Rd., Wayne	Tip ups not marked	20
Robert Grabowski, 70 West 55th St., Bayonne	Illegal missile	100
Charles Mathias, Jr., 331 Ocean Ave., Ocean City	Uncased weapon	100
Joseph Nilan, 409 C. Oakland Ave., Albion	Uncased weapon	100
James Turner, 99 Harrington Circle, Willingboro	Illegal firearm	20
Robert Reynolds, 505 A R.D. No. 1, White Horse Pk., Egg Harbor	Deer closed season	100
Robert Reynolds, 505 A R.D. No. 1, White Horse Pk., Egg Harbor	Poss. illegal missile	20 days in jail
		100
		20 days in jail

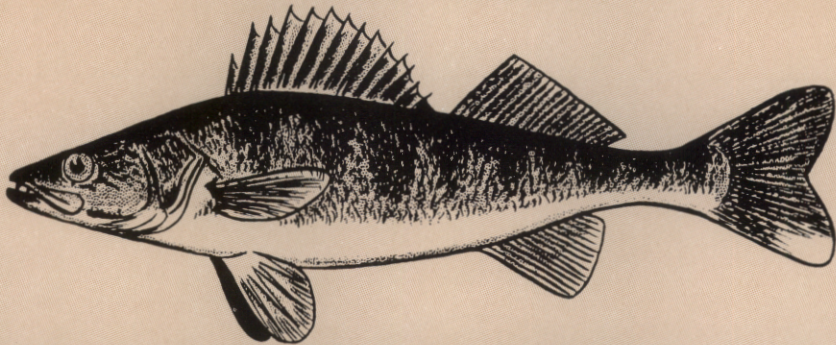
. . . Violators Roundup

<i>Defendant</i>	<i>Offense</i>	<i>Penalty</i>
Robert Reynolds, 505 A R.D. No. 1, White Horse Pk., Egg Harbor	Deer at night	100
Robert Reynolds, 505 A R.D. No. 1, White Horse Pk., Egg Harbor	Hunt w/aid of lights	20 days in jail 4 days in jail
William G. Perona, Prince Albert St., Elwood	Hunt deer closed season	100
William G. Perona, Prince Albert St., Elwood	Illegal missile	100
William G. Perona, Prince Albert St., Elwood	Hunt deer at night	100
William G. Perona, Prince Albert St., Elwood	Hunt w/aid of lights	20
Gustav Balogh, 1639 Fernote St., Rahway	Illegally kill doe deer	100
Fred Bolitsky, 180 Old Bridge Trp., So. River	Hunt no license	20
Carl Goldeski, Rt. No. 1, Box 235, E. Brunswick	Dis. firearm w/in 300 ft. of dwelling	20
Earl Hockenbury, 1025 S. Fourth St., Millville	Hunt waterfowl wrong time	20
Leroy Hickman, 181 N. Laurel St., Bridgeton	Hunt waterfowl wrong time	20
Charles Malloy, New Egypt	Illegal missile	100
Charles Malloy, New Egypt	Hunt not license	20
Ernest Parker, 325 D Street, Millville	Dis. firearm upon road	20
Michael E. Dugas, Warren St., Jamesburg	Loaded gun in auto	20
Michael E. Dugas, Warren St., Jamesburg	Loaded gun in auto	20
Louis Favoretti, Dante Avenue, Vineland	(1) Quail over limit	20
Louis Favoretti, Dante Avenue, Vineland	Dis. firearm upon mun. road	20
John Bonato, Jr., Dante Avenue, Vineland	Hunt no license	20
George R. Fundell, 48½ Miriam Ave., Newton	Tip ups not marked by user	20
Nick Russo, 8 Sheffield Dr., Newark	Hunt w/in limits of state refuge	50
James Taylor, 1713 E. Main St., Millville	Fish no license	20
Lindburch Belcher, Ames Blvd., Hamburg	Poss. deer closed season	100
R. B. Williams, Sr., Ames Blvd., Hamburg	Poss. deer closed season	100
David Toupin, 68 Hugg Ave., Manville	Fail display tag	5
John Riola, 30 Glenside Ave., Summit	Fail display tag	5
James E. Shamy, 22 Quentin Ave., New Brunswick	Hunt w/buckshot	100
William H. Shoemaker, 1501 No. Pawnee Ave., New Brunswick	Hunt after hours (geese)	20
John J. Sassany, Jr., 118 E. Linden Ave., Lindenwold	Hunt after hours (ducks)	20
J. J. Mas Sarda, 18 Washington Ave., Lk. Hiawatha	Illegal firearm	20
Angel Moya, 77 Graham Ave., Paterson	Illegal firearm	20
Kenneth S. Farrand, 9 Bright Road, New Egypt	Loaded gun in auto	20
Albert Bornamon, 36 Montclair Ave., Nutley	Shotgun on game refuge	50
Donald Z. Paul, Warwick Twp., Upper Greenwood Lk.	Uncased weapon	100
Herbert H. Danner, Lincoln Road, Woodstown	Uncased weapon	100
Herbert H. Danner, Lincoln Road, Woodstown	Hunt deer closed season	100
Werner R. Hansen, H-C-4 Barracks, N.A.S. Lakehurst	Loaded gun in auto	20
Edward A. Smith, 24 Robins Rd., Bricktown	Fish no license	20
William Gorman, 43 Howard Place, Williamstown	Poss. deer w/horns less than 3"	100
Martin Sussman, Manager, Penn Fruit Co., Black Horse Pike, Audubon	Poss. stripped bass undersize	20
Martin Sussman, Manager, Penn Fruit Co., Black Horse Pike, Audubon	Poss. stripped bass undersize	20
Martin Sussman, Manager, Penn Fruit Co., Black Horse Pike, Audubon	Poss. stripped bass undersize	20
Martin Sussman, Manager, Penn Fruit Co., Black Horse Pike, Audubon	Poss. stripped bass undersize	20
Martin Sussman, Manager, Penn Fruit Co., Black Horse Pike, Audubon	Poss. stripped bass undersize	20

Fur, Fin ^{and} Campfire

By BILL BERO

WALLEYED PIKE

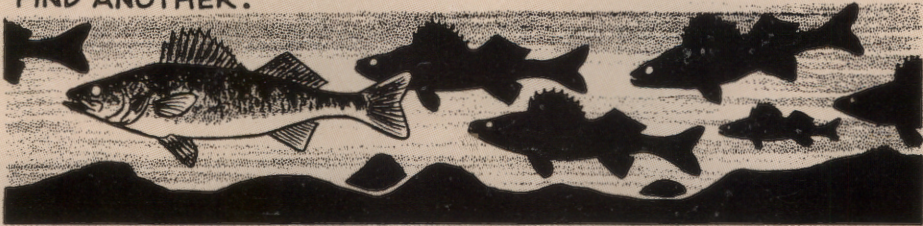


WALLEYES LOOK FOR FOOD ALONG EDGES OF SAND BARS OR DROP-OFFS AND NEAR ROCKY LEDGES AND REEFS.

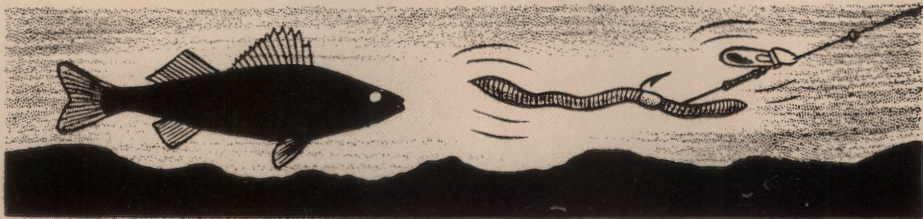
THEY CAN BE CAUGHT STILL FISHING WITH LIVE MINNOWS, BAIT CASTING WITH DEEP RUNNING PLUGS AND SPOONS.

THEY RUN FROM 2 POUNDS TO 20 POUNDS AND THE 7-10-POUNDER ARE COMMON.

THEY TRAVEL IN SCHOOLS AND WHERE YOU FIND ONE YOU'LL FIND ANOTHER.



BEST METHOD IS SLOW TROLLING WITH SINKING LURES. MANY TROLL AT NIGHT WITH JUNE BUG SPINNER TRAILING A WORM.



Fall fishing for walleyed pike in the Delaware River from Lambertville to the state line is well worth trying.

New Jersey State Library

New Jersey Outdoors
P. O. Box 1809
Trenton, N. J. 08625
Form 3579 Requested

Second class postage
paid at Trenton, N. J.,
and additional mailing
office.

FREE PUBLIC LIBRARY
TRENTON, NEW JERSEY

OCT 4 - 1966

REFERENCE
DEPARTMENT

