

974.905
044.4
C.

DEPARTMENT OF HUMAN SERVICES
INTER-OFFICE COMMUNICATION

DATE May 29, 1996

TO William Waldman
Commissioner

FROM Karen Highsmith
Acting Director

SUBJECT CURRENT PROGRAM STATISTICS

Attached please find CURRENT PROGRAM STATISTICS, including the FDP Statistical Summary for March 1996. Also included are explanatory notes for the various data elements.

Should you have any questions, please feel free to call me.

KH:kas:c

Attachments

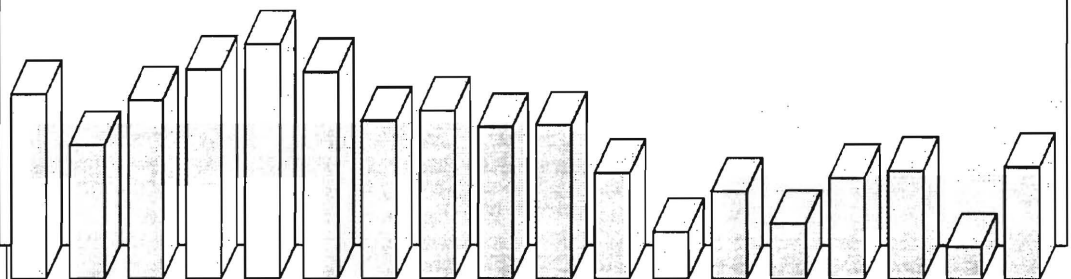
c Guhl
Grant
Tencza

*State of New Jersey
Department of Human Services
Division of Family Development*

CURRENT PROGRAM STATISTICS

March 1996

Karen Highsmith, Acting Director



State of New Jersey
 Department of Human Services
 Division of Family Development

CURRENT PROGRAM STATISTICS
 March 1996

TABLE OF CONTENTS

	Page
Highlights of Current Program Statistics	1-3
 Statistics by County, March 1996	
Table 1 AFDC	4
Graph 1 Current AFDC Families.....	5
Table 2 Food Stamp Program.....	6
Graph 2 Current Food Stamp Households/Persons	7
Table 3 Emergency Assistance Program	8
Graph 3 Current Families Receiving Emergency Assistance.....	9
Table 4 Family Development Program.....	10
 State Summary, 1994 - 1996	
Table 5 AFDC, March 1994 - March 1996	12
Graph 4 Families Receiving AFDC,3/94 - 3/96	12
Table 6 Food Stamp Program, March 1994 - March 1996.....	13
Graph 5 Food Stamp Households,3/94 - 3/96.....	14
Graph 6 Food Stamp Recipients,3/94 - 3/96	15
Table 7 Emergency Assistance Program, March 1994 - March 1996	16
Graph 7 AFDC Families Receiving Emergency Assistance 3/94 - 3/96	17
Table 8 JOBS/FDP Participation Rates, by County and Statewide, March 1994 - March 1996	18
Graph 8 JOBS/FDP Participation Rates, 3/94 - 3/96	19
Table 9 General Assistance, September 1993 - September 1995	20
Graph 9 General Assistance Recipients 9/93 -9/95	21
Table 10 Child Support and Paternity, Fiscal Years 1994-1996	22
Explanatory Notes	23-24
 Supplement	
Table 11 General Assistance Recipients by County and Municipality, September 1995	25
Table 12 Child Support and Paternity Cases Remaining Open, Quarter Ending March 1996	26

Highlights of Current Program Statistics

AFDC (Tables 1 and 5, Graphs 1 and 4)

115,000 eligible families in New Jersey were receiving AFDC as of the end of March 1996:

- Less than **103,600** single head of household families (Regular AFDC, C segment).
- Among two-parent families, about the same number, over **3200**, of Unemployed Parent families (F Segment) and State AFDC families (N Segment).
- Less than **5000** Medicaid Only families.
- The largest numbers of families by county: Essex with **29,200**, Hudson with **18,100**, and Camden County with **13,100**. (52 percent of all AFDC families)
- Other counties ranged from under **200** families in Hunterdon to **7,400** in Passaic County.

There were about the same number of eligible families in March as in February 1996, with a total decline of nearly 10,000 since the May/June 1994 peak of 124,600.

- There were about the same number of C segment families in March as in February 1996, and **8200** less than the peak of **111,800** in June 1994.
- F segment families declined from over **4500** in May 1994 to about **3200** by October 1995, with almost no change since then.
- State AFDC (N segment) also peaked at almost **3500** in May 1994, but slowly declined by about **300** since then.
- Medicaid Only families remained at or below **5000** in 1994, but averaged nearly **5200** for 1995. In March 1996 they were again down to less than **5000**.

FOOD STAMP PROGRAM (Tables 2 and 6, Graphs 2, 5, and 6)

At the end of March 1996, almost 223,300 households were participating in the Food Stamp Program:

- **109,400** AFDC households with **342,400** persons.
- **113,900** Other Low Income households with **173,300** persons.
- **48 percent** were in Essex (**55,500**), Hudson (**30,100**) and Camden (**21,600**) Counties.
- Food Stamp households included about **516,000** persons, **248,000** adults and **268,000** children.
- There are **seven** counties (Bergen, Hunterdon, Monmouth, Morris, Somerset, Sussex, and Warren) where the number of adults exceed the number of children in Food Stamp households. In **four** other counties adults are nearly half of all persons in Food Stamp households (Atlantic, Burlington, Cape May, and Middlesex).

There were 222,000 Food Stamp households in New Jersey in March 1994. The number has remained near the 220,000 to 222,000 range since then, except for a peak in March 1995 of almost 225,000, and another peak in March 1996 of over 223,000.

- The number of Other Low Income households continues to rise and has exceeded the number of AFDC(FS) households since November 1995, with an overage of almost **4500** in March 1996. Other Low Income households receiving Food Stamps surpassed **100,000** three years ago in March 1993, exceeded **106,000** in March 1994, and were close to **114,000** by March 1996. AFDC(FS) households had grown to nearly **116,000** by March 1994, then declined to slightly more than **109,000** by March 1996.
- Total Recipients peaked at almost **531,000** in March 1994, and then again at **529,500** in March 1995. After falling below **512,000** in December 1995, the level increased almost **4000** over the following three months, to reach almost **516,000** in March 1996.
- The number of Recipient Adults averaged about **246,000** in both 1994 and 1995. The increase to nearly **248,000** in March 1996 was the highest level since March 1995.
- The number of Recipient Children which peaked at almost **283,000** in March 1994 and almost **280,000** in March 1995, has since declined, but has remained around **268,000** from December 1995 through March 1996.

EMERGENCY ASSISTANCE (Tables 3 and 7, Graphs 3 and 7)

In March 1996 5,001 eligible AFDC families received Emergency Assistance (EA) payments in New Jersey:

- **1,779** families with Temporary Rental Assistance (TRA)
- **270** motel placements
- **388** emergency shelter placements
- All other AFDC-EA accounted for **2,564** families, including back rent, back utilities, security deposits, furnishings, clothing and food allowance, or transitional housing.
- **1464** AFDC families in Essex County received EA, with **675** in Middlesex, and **560** in Passaic. All other counties had between **12** and **399**, with nine counties **under 100**.

In the past two years the highest numbers of AFDC families receiving EA were in March and May of 1994, each with close to 8000. The number had declined to about 5000 by November 1995, dropped below 5000 in January 1996 and returned to 5000 in March 1996.

- The number of families provided TRA each month has declined steadily from about **3600** in early 1994, and has been below **2000** since September 1995.
- Emergency Shelter and Motel Housing have each been provided to **under 500** families each month, except for three months in 1994 and one in 1995 when Motel Housing exceeded **500**.
- An average of **3300** families received Other EA in 1994 and **2800** in 1995. The number dropped to **2200** in January 1996 and moved up to almost **2600** in March.

JOBS/FDP PARTICIPATION RATES (Table 8, Graph 8)

The Statewide JOBS/FDP participation rate of **27.8 percent** in **March 1996** was the **second highest month** in the last two years, exceeded only slightly by the rate for **October 1995**. This represents an increase of more than four percentage points over February. Two years ago the rate was only **18.8 percent**. A clear upward shift has been evident over the past two years.

- Since February 1994, many counties have shown upward movement in participation rates. Most counties tend to show small fluctuations, with Cape May, Essex, Hudson, Middlesex, Ocean, and Passaic having clear upward movement. Bergen, Burlington, Camden, Gloucester, Mercer, Monmouth and Union have had slight increases. Cumberland has maintained very high participation rates overall. Atlantic, Salem, Somerset, Sussex, and Warren also exhibited high rates, but have had wide fluctuations. Hunterdon jumped to higher levels early 1995. Morris increased markedly in 1995 and remains at record levels.
- For March 1996, Camden, Cape May, and Essex remained between **10 and 20 percent**, while Bergen, Gloucester, Hudson, Mercer and Ocean were **between 20 and 30 percent**. Burlington, Hunterdon, Middlesex, Monmouth, Passaic and Union were **between 30 and 40 percent**, while Atlantic, and Warren were **between 40 and 60 percent**. Cumberland, Salem, Somerset, and Sussex exceeded **60 percent**. Morris continued to far surpass all previous levels experienced in any county at **over 90 percent**. From February to March 1996, participation rates increased in nineteen of the State's 21 counties.

GENERAL ASSISTANCE (Table 9, Graph 9)

For the period **September 1993 through September 1995** (the latest available information), the number of GA recipients peaked at **38,100** in **March 1994**. The level stayed around **35,000** from **September through December 1994**. The number for **January through April 1995** remained below **36,000**, then declined each month thereafter to less than **32,000** by **September 1995**.

- The number of employable recipients peaked in **March 1994 (26,400)** and has been declining since then. The level remained slightly over **23,000** from **September through December 1994**. After increasing to over **24,000** in **January 1995**, the level resumed declining, and was less than **21,600** from **June through September**.
- Unemployable GA recipients remained within a relatively narrow range then began to decline noticeably. The level remained between **11,000 and 12,300** from **August 1993 through July 1995**. Since **July 1995**, Unemployable GA recipients declined by about **1,000**.

CHILD SUPPORT AND PATERNITY COLLECTIONS (Table 10)

Total collections of the Child Support and Paternity Program grew from about **\$266 million** to almost **\$271 million** from the second half of **1994** to the second half of **1995**, an increase of **2.1 percent**.

- AFDC/Foster Care collections increased from almost **\$40 million** to more than **\$41 million**, or **3.6 percent**.
- Non-AFDC collections grew from more than **\$226 million** to over **\$230 million**, or **1.8 percent**.

New Jersey Department of Human Services
Division of Family Development

TABLE 1

AFDC Program

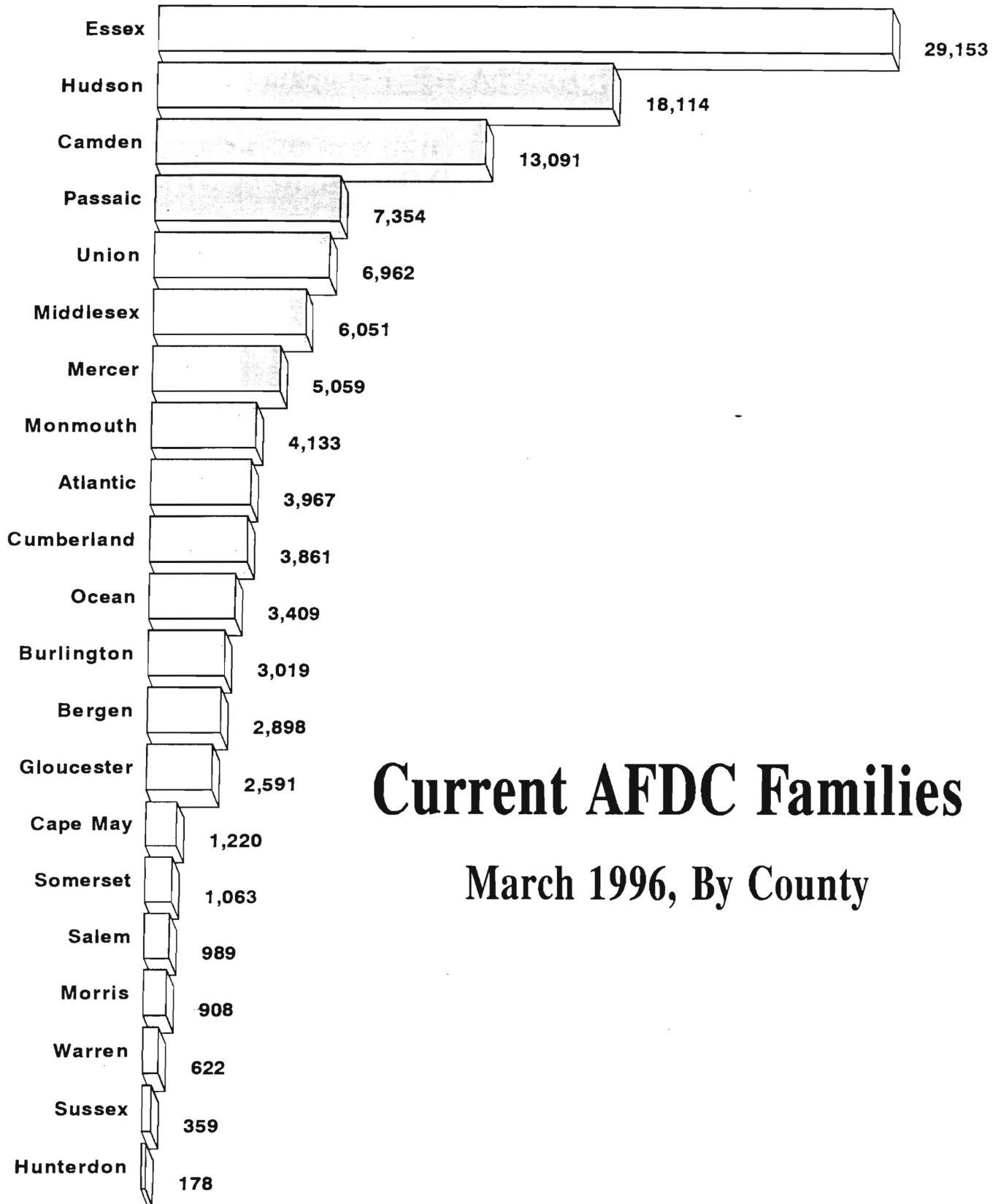
**NUMBER OF APPLICATIONS AND TERMINATIONS DURING REPORT MONTH, AND
NUMBER OF ELIGIBLE FAMILIES RECEIVING AFDC AT END OF REPORT MONTH**

March 1996

County	Applications Approved	Terminations	Regular AFDC (C Segment)	Unemployed Parents (F)	State AFDC (N)	Medicaid Only	TOTAL AFDC
Atlantic	298	272	3,607	144	80	136	3,967
Bergen	152	142	2,556	137	128	77	2,898
Burlington	252	265	2,628	89	77	225	3,019
Camden	837	919	11,480	547	370	694	13,091
Cape May	117	91	986	80	82	72	1,220
Cumberland	278	261	3,236	205	213	207	3,861
Essex	942	1,078	27,746	433	227	747	29,153
Gloucester	308	239	2,226	119	78	168	2,591
Hudson	513	636	16,302	338	625	849	18,114
Hunterdon	17	18	145	5	9	19	178
Mercer	539	396	4,550	93	103	313	5,059
Middlesex	420	371	5,082	230	289	450	6,051
Monmouth	233	257	3,809	79	187	58	4,133
Morris	60	69	814	29	28	37	908
Ocean	224	251	2,877	166	154	212	3,409
Passaic	376	368	6,747	284	254	69	7,354
Salem	91	79	869	23	27	70	989
Somerset	155	112	845	47	36	135	1,063
Sussex	48	40	299	12	7	41	359
Union	399	386	6,274	133	205	350	6,962
Warren	58	52	520	37	38	27	622
NJ TOTAL	6,317	6,302	103,598	3,230	3,217	4,956	115,001

Data Sources: Data is derived from NJ Division of Family Development's FAMIS report # FF-012.

GRAPH 1



Current AFDC Families

March 1996, By County

New Jersey Department of Human Services
Division of Family Development

TABLE 2

FOOD STAMP Program

**NUMBER OF ATP'S ISSUED TO HOUSEHOLDS, PERSONS, ADULTS
AND CHILDREN AT THE END OF THE REPORT MONTH**

March 1996

County	HOUSEHOLDS			PERSONS				
	AFDC	Other low income	TOTAL	TOTAL	AFDC	Other low income	Adults	Children
Atlantic	3,803	4,960	8,763	19,054	12,214	6,840	9,497	9,557
Bergen	2,710	5,686	8,396	16,803	8,068	8,735	9,809	6,994
Burlington	2,697	3,044	5,741	13,124	8,180	4,944	6,513	6,611
Camden	12,593	9,050	21,643	54,217	41,123	13,094	24,410	29,807
Cape May	1,269	1,382	2,651	6,624	4,218	2,406	3,235	3,389
Cumberland	3,783	2,853	6,636	17,218	12,647	4,571	7,910	9,308
Essex	28,578	26,872	55,450	126,771	88,402	38,369	59,401	67,370
Gloucester	2,367	1,986	4,353	10,632	7,302	3,330	5,061	5,571
Hudson	17,335	12,791	30,126	72,363	52,541	19,822	32,831	39,532
Hunterdon	139	380	519	1,039	421	618	596	443
Mercer	4,622	4,615	9,237	20,051	14,119	5,932	9,572	10,479
Middlesex	5,514	6,134	11,648	25,956	16,525	9,431	12,975	12,981
Monmouth	3,980	6,513	10,493	22,664	12,660	10,004	11,797	10,867
Morris	807	1,925	2,732	5,453	2,364	3,089	3,184	2,269
Ocean	3,465	4,713	8,178	20,409	11,327	9,082	9,677	10,732
Passaic	6,912	9,587	16,499	37,988	22,624	15,364	18,457	19,531
Salem	929	815	1,744	4,282	3,001	1,281	1,965	2,317
Somerset	1,011	1,858	2,869	5,711	2,923	2,788	3,102	2,609
Sussex	309	641	950	2,181	948	1,233	1,170	1,011
Union	5,967	7,030	12,997	29,400	18,984	10,416	14,562	14,838
Warren	574	1,060	1,634	3,736	1,770	1,966	1,971	1,765
NJ TOTAL	109,364	113,895	223,259	515,676	342,361	173,315	247,695	267,981

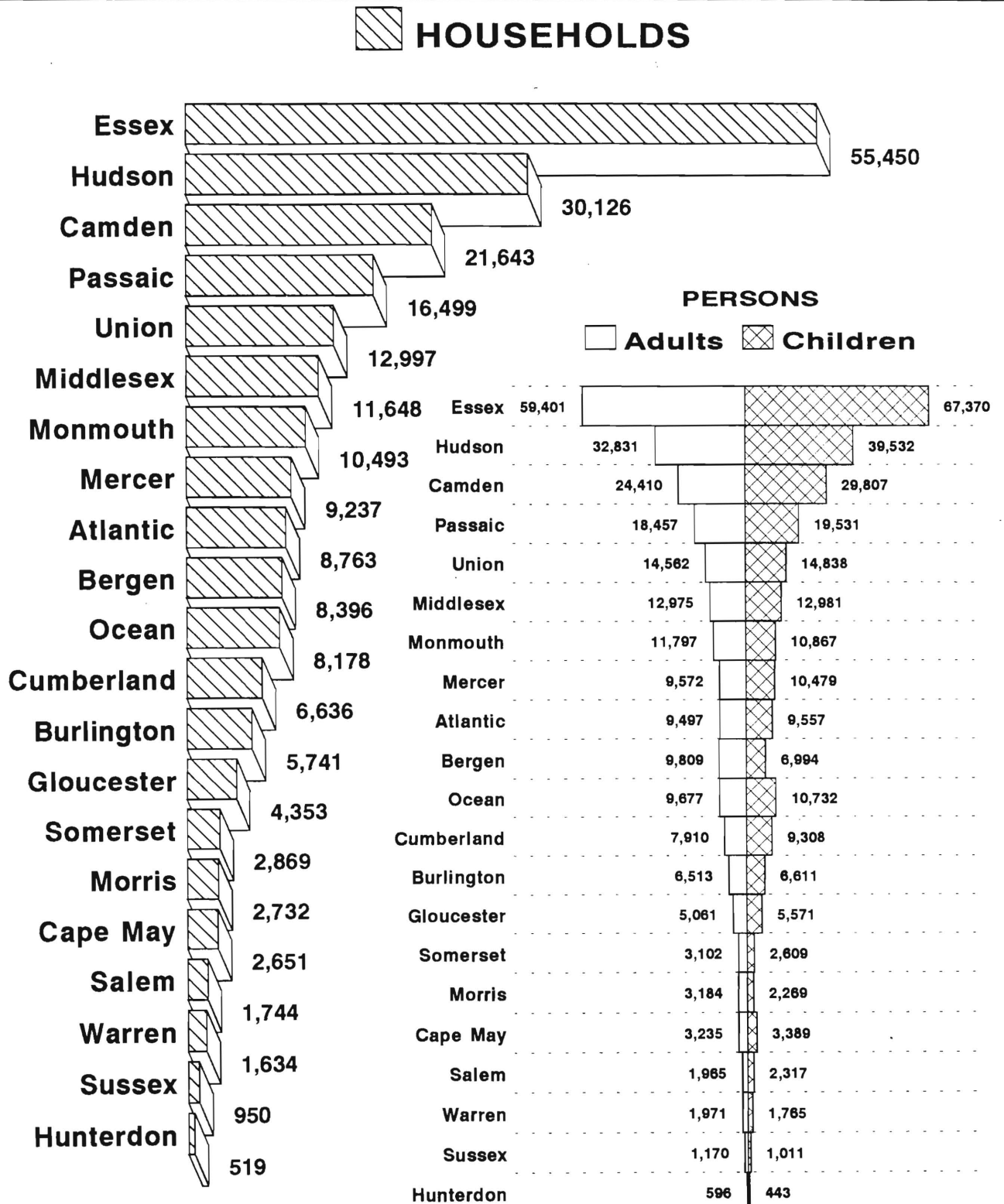
ATP - Authorization to Participate, may include some duplication

Data Sources: Data is derived from NJ Division of Family Development's FAMIS report # FB-160.

GRAPH 2

Food Stamp Households

March 1996, By County



New Jersey Department of Human Services
Division of Family Development

TABLE 3

EMERGENCY ASSISTANCE RECIPIENTS

NUMBER OF ELIGIBLE FAMILIES RECEIVING EMERGENCY ASSISTANCE PAYMENTS
(UNDUPLICATED CASES)

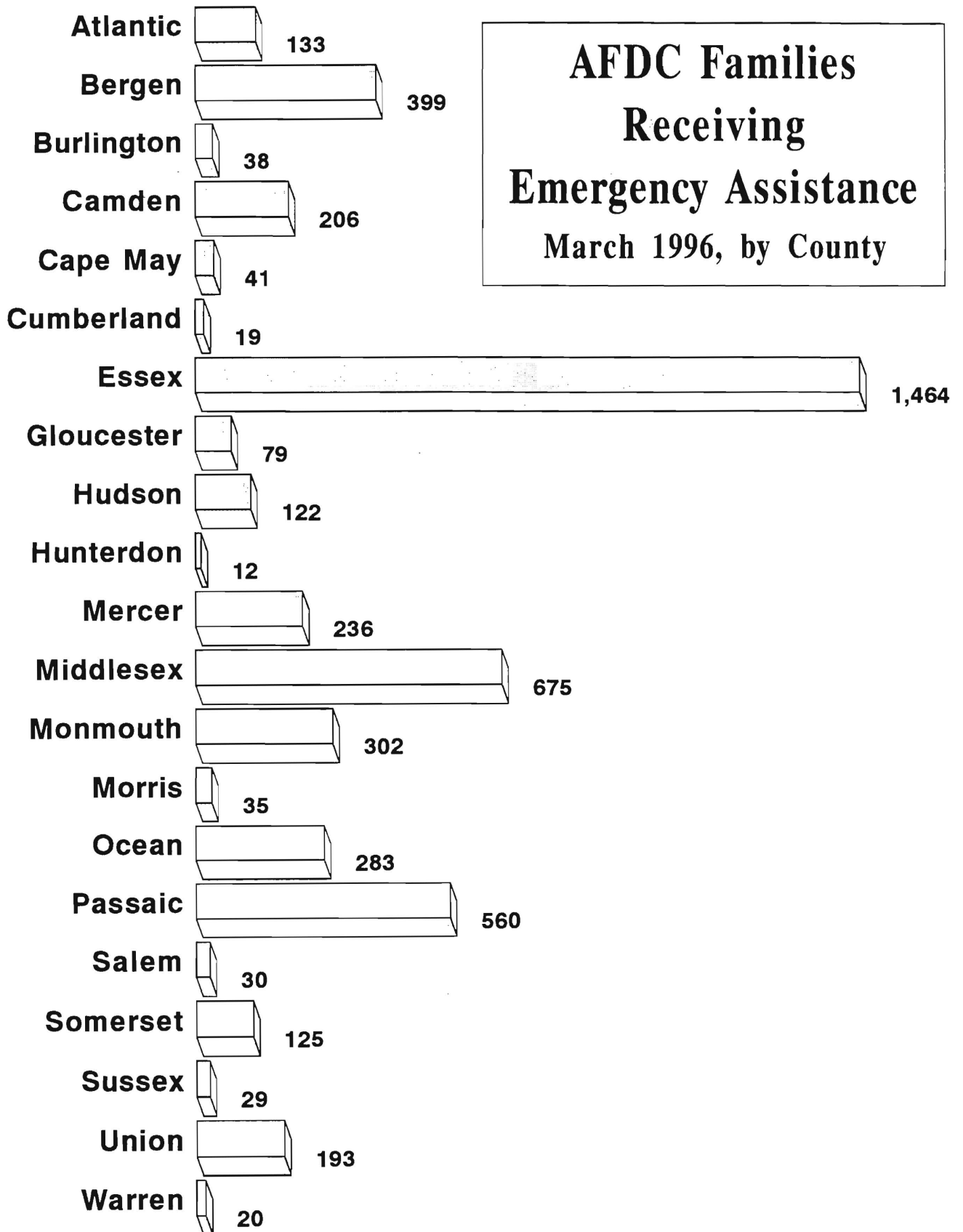
March 1996

County	AFDC Families Receiving Emergency Assistance					SSI
	TOTAL AFDC -EA	Temporary Rental Assist	Motel Housing	Emergency Shelter	Other AFDC-EA	Recipients Receiving EA
ATLANTIC	133	47	11	16	59	42
BERGEN	399	216	17	26	140	14
BURLINGTON	38	0	1	31	6	6
CAMDEN	206	72	2	26	106	18
CAPE MAY	41	5	4	0	32	1
CUMBERLAND	19	0	1	8	10	11
ESSEX	1,464	611	19	74	760	50
GLOUCESTER	79	32	3	28	16	11
HUDSON	122	17	5	41	59	13
HUNTERDON	12	2	0	4	6	0
MERCER	236	92	25	10	109	11
MIDDLESEX	675	388	17	11	259	37
MONMOUTH	302	109	41	0	152	15
MORRIS	35	1	0	16	18	15
OCEAN	283	129	63	0	91	40
PASSAIC	560	4	10	29	517	56
SALEM	30	11	11	2	6	4
SOMERSET	125	16	13	27	69	16
SUSSEX	29	1	9	5	14	7
UNION	193	26	3	33	131	16
WARREN	20	0	15	1	4	3
NJ TOTAL	5,001	1,779	270	388	2,564	386

Data Sources: Derived from NJ Division of Family Development FAMIS Reports #FM 457 and #FM 430-03a.

GRAPH 3

AFDC Families Receiving Emergency Assistance March 1996, by County



NEW JERSEY DEPARTMENT OF HUMAN SERVICES
DIVISION OF FAMILY DEVELOPMENT

TABLE 4
FAMILY DEVELOPMENT PROGRAM
STATISTICAL SUMMARY

COUNTY	SNAPSHOT OF ACTIVITY AS OF MARCH 1996				ACTIVITY FOR MONTH OF MARCH 1996						
	TOTAL NONEXMT JOBS/FDP RECI- PIENTS	EMPLOYMENT DIRECTED ACTIVITIES(1)			PARTIC IN EDAs & RECEIVE SUPPORT SERVICES		PARTIC W/ 1st C M INTV	# EMPL THIS MONTH & STILL REC AFDC	# CLSD ON FAMIS RE: EARNINGS (2)	POST AFDC & REC CHILD CARE	
		TRAIN- ING	EDUCA- TION	JOB SEARCH	TREs	CHILD CARE					
ATLANTIC	1,572	311	296	141	371	217	203	64	99	168	
BERGEN	1,833	208	128	28	190	144	42	19	54	67	
BURLINGTON	1,493	327	166	69	426	170	182	67	70	170	
CAMDEN	8,530	515	493	53	723	459	36	36	148	234	
CAPE MAY	680	87	13	68	67	16	65	12	25	5	
CUMBERLAND	1,642	313	309	40	614	281	201	34	63	88	
ESSEX	17,446	1,499	1,132	324	2,137	1,348	308	82	240	139	
GLOUCESTER	1,232	326	99	22	447	107	114	7	46	62	
HUDSON	11,702	960	1,511	79	1,990	937	354	42	192	250	
HUNTERDON	91	8	18	6	9	15	7	3	8	10	
MERCER	3,057	245	271	49	216	214	80	34	65	103	
MIDDLESEX	3,448	508	318	121	465	201	262	120	109	112	
MONMOUTH	2,613	385	267	117	600	301	187	57	69	171	
MORRIS	464	171	54	113	90	88	65	11	31	40	
OCEAN	2,040	295	138	141	175	131	146	52	84	132	
PASSAIC	3,992	935	398	71	975	274	245	55	90	127	
SALEM	407	107	99	5	137	84	16	6	15	38	
SOMERSET	530	62	74	18	85	71	10	14	17	40	
SUSSEX	204	57	61	46	50	43	16	4	12	31	
UNION	3,958	476	391	154	584	225	163	18	89	110	
WARREN	405	45	59	63	28	25	6	15	28	16	
STATE	67,339	7,840	6,295	1,728	10,379	5,351	2,708	752	1,554	2,113	

(1) - The number of participants receiving support services may occasionally exceed the number actively participating in EDAs. This can result from extended assessment or evaluation activities, or the issuance of bridge payments.

(2) - FAMIS file date 3/22/96

New Jersey Department of Human Services
Division of Family Development

TABLE 5

AFDC Program State Summary

**NUMBER OF APPLICATIONS AND TERMINATIONS DURING REPORT MONTH,
AND NUMBER OF ELIGIBLE FAMILIES RECEIVING AFDC AT END OF REPORT MONTH**

March 1994 through March 1996

	Applications Approved	Terminations	Regular AFDC (C Segment)	Unemployed Parents (F)	State AFDC (N)	Medicaid Only	TOTAL AFDC
1994 Mar	5,693	5,893	110,699	4,383	3,301	4,831	123,214
Apr	6,284	5,997	110,951	4,506	3,399	4,834	123,690
May	7,094	6,188	111,700	4,549	3,483	4,913	124,645
Jun	5,758	5,742	111,787	4,423	3,477	4,953	124,640
Jul	5,117	5,898	111,064	4,266	3,428	5,007	123,765
Aug	6,435	6,827	111,025	4,128	3,401	4,940	123,494
Sep	6,266	6,754	110,790	4,007	3,369	4,900	123,066
Oct	6,592	6,950	110,517	3,927	3,340	4,966	122,750
Nov	6,344	6,796	110,181	3,814	3,350	5,002	122,347
Dec	5,682	5,890	110,070	3,789	3,360	5,065	122,284
AVERAGE (12 MONTHS)	6,014	6,150	110,901	4,195	3,351	4,928	123,375
1995 Jan	5,583	5,944	109,645	3,875	3,358	5,045	121,923
Feb	5,964	6,515	109,261	3,878	3,270	5,016	121,425
Mar	5,810	6,221	108,800	3,903	3,305	5,088	121,096
Apr	7,096	7,086	108,822	3,907	3,365	5,209	121,303
May	5,288	5,784	108,343	3,773	3,369	5,328	120,813
Jun	5,558	6,458	107,541	3,639	3,336	5,358	119,874
Jul	5,977	6,781	107,028	3,574	3,286	5,293	119,181
Aug	5,547	6,294	106,475	3,489	3,260	5,239	118,463
Sep	5,922	6,647	105,943	3,303	3,260	5,175	117,681
Oct	7,062	7,359	105,917	3,224	3,257	5,110	117,508
Nov	6,083	6,660	105,445	3,164	3,199	5,189	116,997
Dec	5,582	5,775	105,287	3,165	3,189	5,258	116,899
AVERAGE	5,956	6,460	107,376	3,575	3,288	5,192	119,430
1996 Jan	5,332	6,236	104,430	3,139	3,173	5,113	115,855
Feb	5,217	6,283	103,561	3,161	3,170	5,060	114,952
Mar	6,317	6,302	103,598	3,230	3,217	4,956	115,001
AVERAGE	5,622	6,274	103,863	3,177	3,187	5,043	115,269

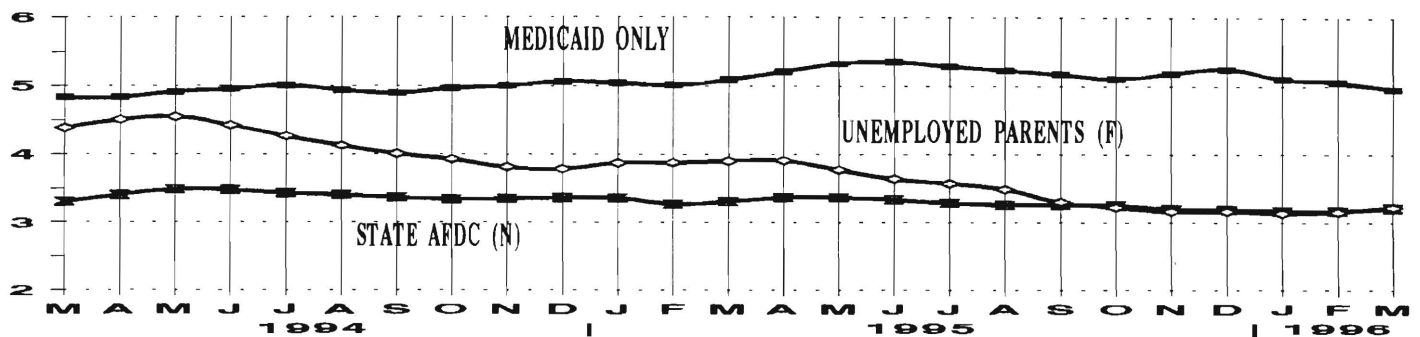
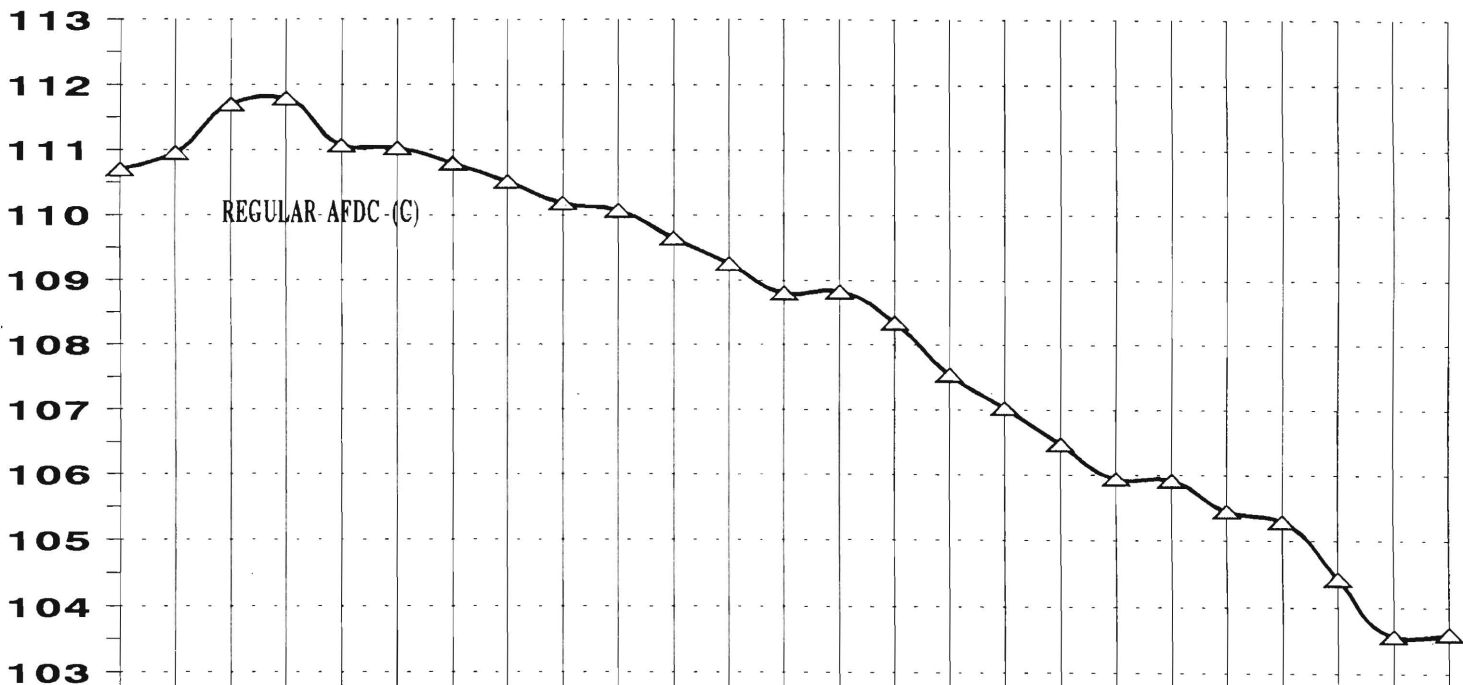
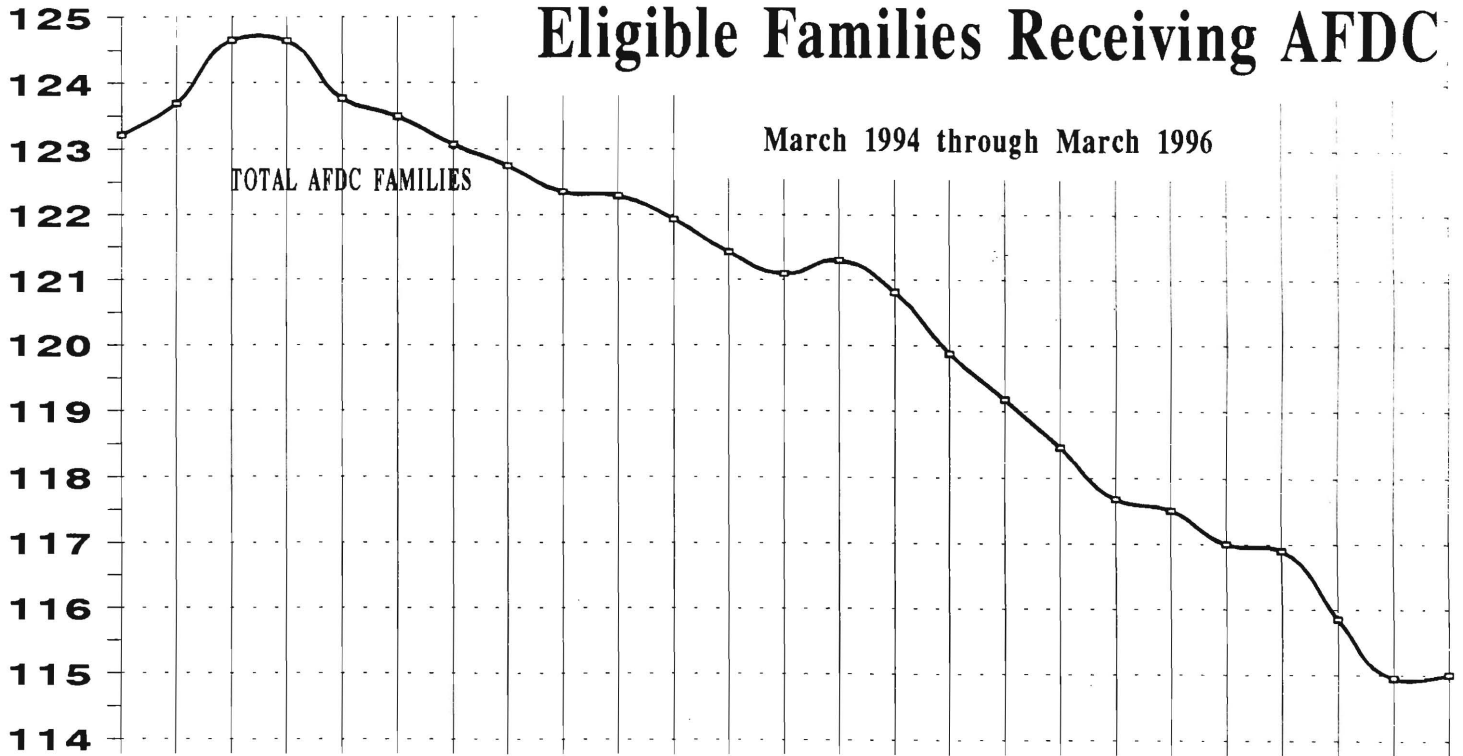
Data Sources: Data is derived from NJ Division of Family Development's FAMIS report # FF-012.

GRAPH 4

Eligible Families Receiving AFDC

March 1994 through March 1996

THOUSANDS



New Jersey Department of Human Services
Division of Family Development

TABLE 6

FOOD STAMP Program State Summary

**NUMBER OF ATP'S ISSUED TO HOUSEHOLDS, PERSONS,
ADULTS AND CHILDREN AT THE END OF THE REPORT MONTH**

March 1994 through March 1996

	HOUSEHOLDS			PERSONS				
	AFDC	Other low income	TOTAL	TOTAL	AFDC	Other low income	Adults	Children
1994Mar	115,730	106,160	221,890	530,892	365,132	165,760	248,219	282,673
Apr	115,661	106,454	222,115	530,591	365,241	165,350	248,331	282,260
May	115,874	106,611	222,485	530,595	364,941	165,654	248,420	282,175
Jun	115,737	106,683	222,420	529,514	364,394	165,120	248,099	281,415
Jul	115,172	105,717	220,889	526,075	362,520	163,555	246,142	279,933
Aug	114,809	106,115	220,924	524,659	361,106	163,553	246,052	278,607
Sep	114,177	105,972	220,149	521,945	358,849	163,096	244,835	277,110
Oct	114,039	106,903	220,942	522,406	358,010	164,396	245,676	276,730
Nov	114,251	107,577	221,828	524,090	358,582	165,508	246,659	277,431
Dec	114,232	107,467	221,699	523,825	358,446	165,379	246,517	277,308
AVERAGE (12 MONTHS)	114,789	105,924	220,714	525,325	361,323	164,003	246,043	279,282
1995 Jan	113,691	107,493	221,184	522,125	356,763	165,362	245,837	276,288
Feb	113,830	108,421	222,251	524,344	357,419	166,925	247,107	277,237
Mar	114,339	110,279	224,618	529,456	359,404	170,052	249,994	279,462
Apr	113,588	108,991	222,579	524,102	356,717	167,385	247,367	276,735
May	113,125	109,171	222,296	522,173	355,099	167,074	246,949	275,224
Jun	112,827	109,198	222,025	521,084	354,211	166,873	246,557	274,527
Jul	111,635	107,978	219,613	515,478	350,378	165,100	243,727	271,751
Aug	111,415	109,603	221,018	516,618	349,372	167,246	245,110	271,508
Sep	110,760	109,154	219,914	513,517	347,126	166,391	243,723	269,794
Oct	110,697	110,268	220,965	514,598	346,519	168,079	244,911	269,687
Nov	110,630	110,763	221,393	514,823	346,034	168,789	245,455	269,368
Dec	109,992	110,155	220,147	511,727	343,955	167,772	243,965	267,762
AVERAGE	112,211	109,290	221,500	519,170	351,916	167,254	245,892	273,279
1996 Jan	109,554	111,166	220,720	512,165	342,778	169,387	244,801	267,364
Feb	109,649	112,813	222,462	515,181	343,314	171,867	246,961	268,220
Mar	109,364	113,895	223,259	515,676	342,361	173,315	247,695	267,981
AVERAGE	109,522	112,625	222,147	514,341	342,818	171,523	246,486	267,855

ATP - Authorization to Participate

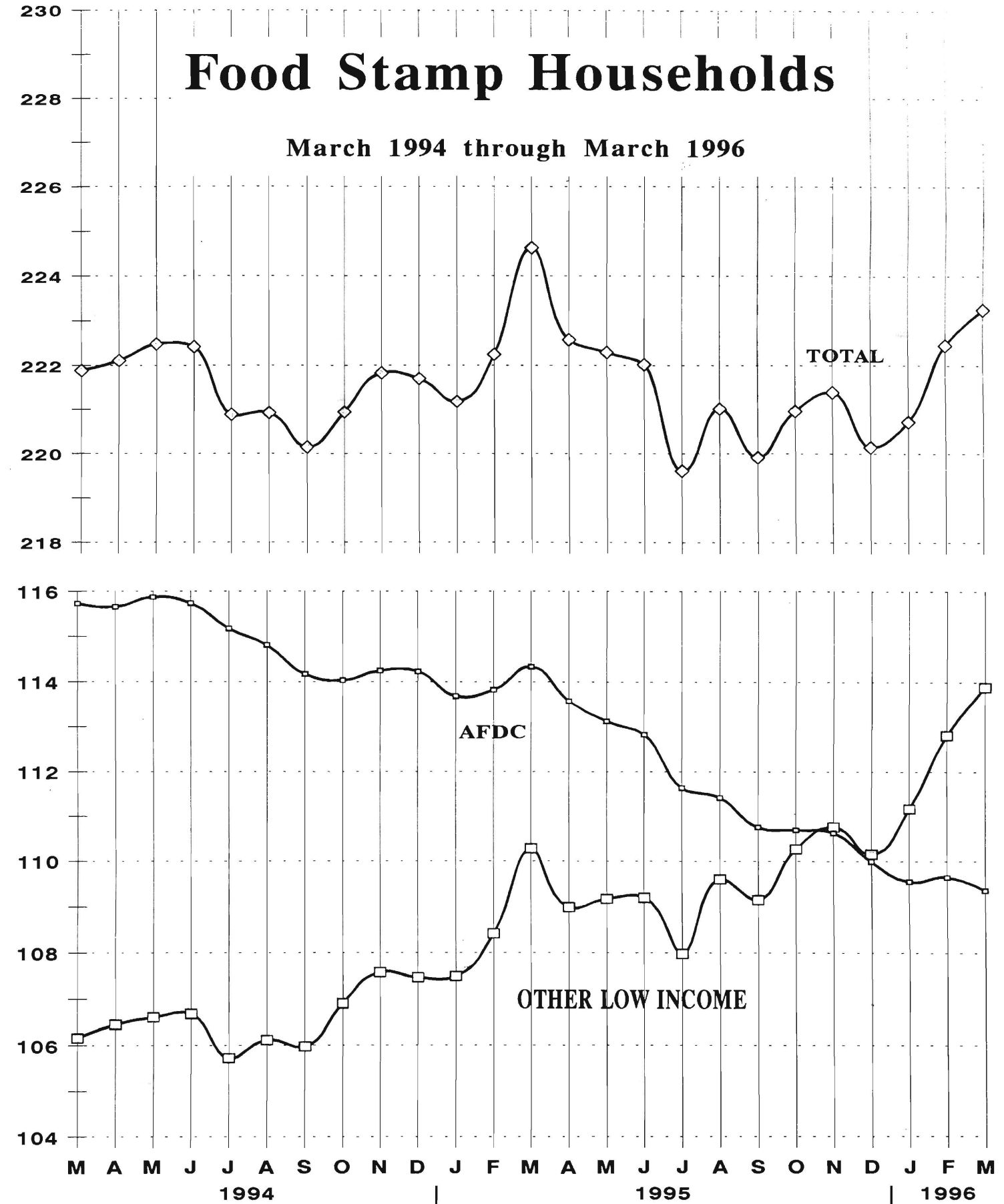
Data Sources: Data is derived from NJ Division of Family Development's FAMIS report # FB-160.

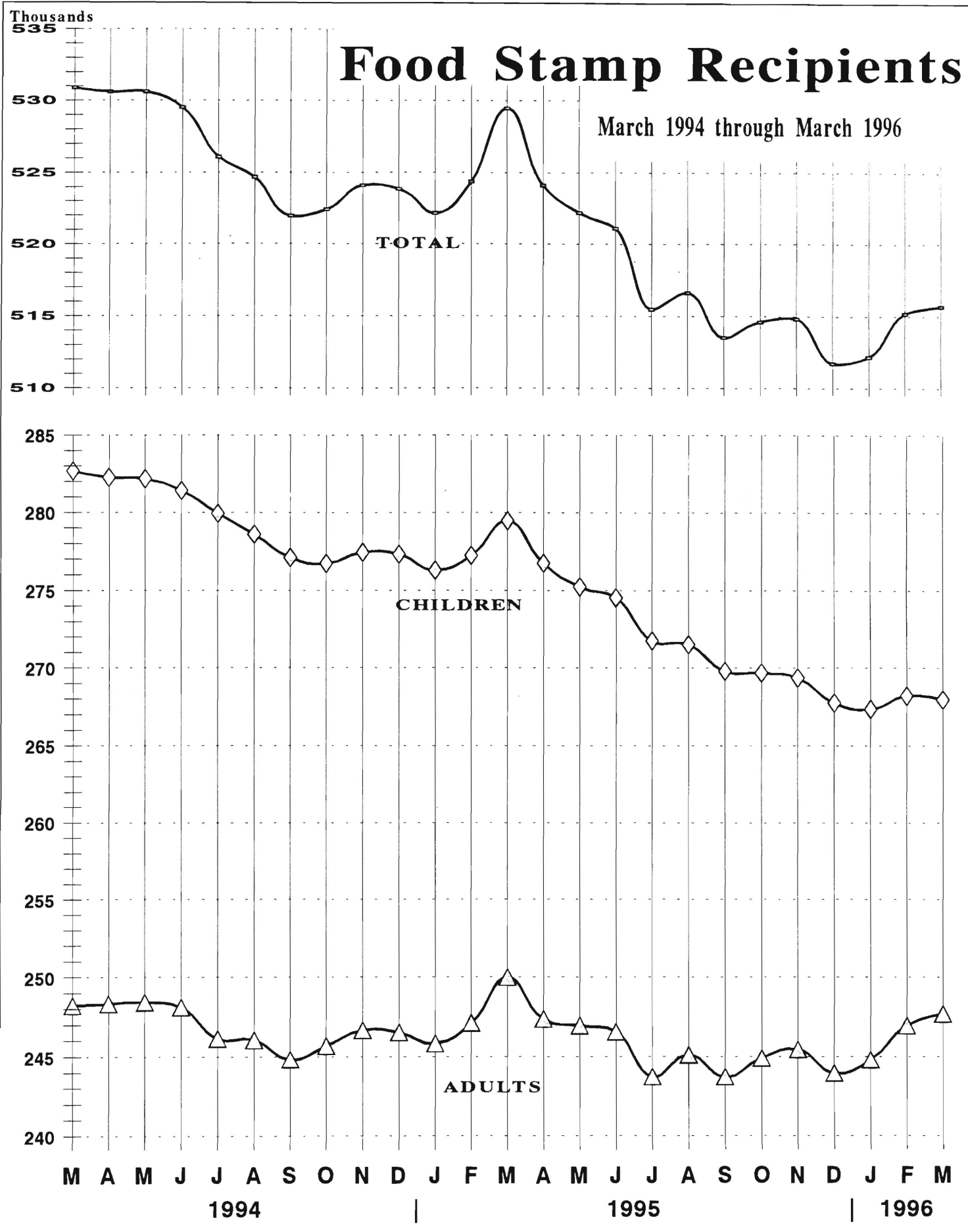
GRAPH 5

Thousands

Food Stamp Households

March 1994 through March 1996





New Jersey Department of Human Services
Division of Family Development

TABLE 7

EMERGENCY ASSISTANCE Program for AFDC Recipients

State Summary

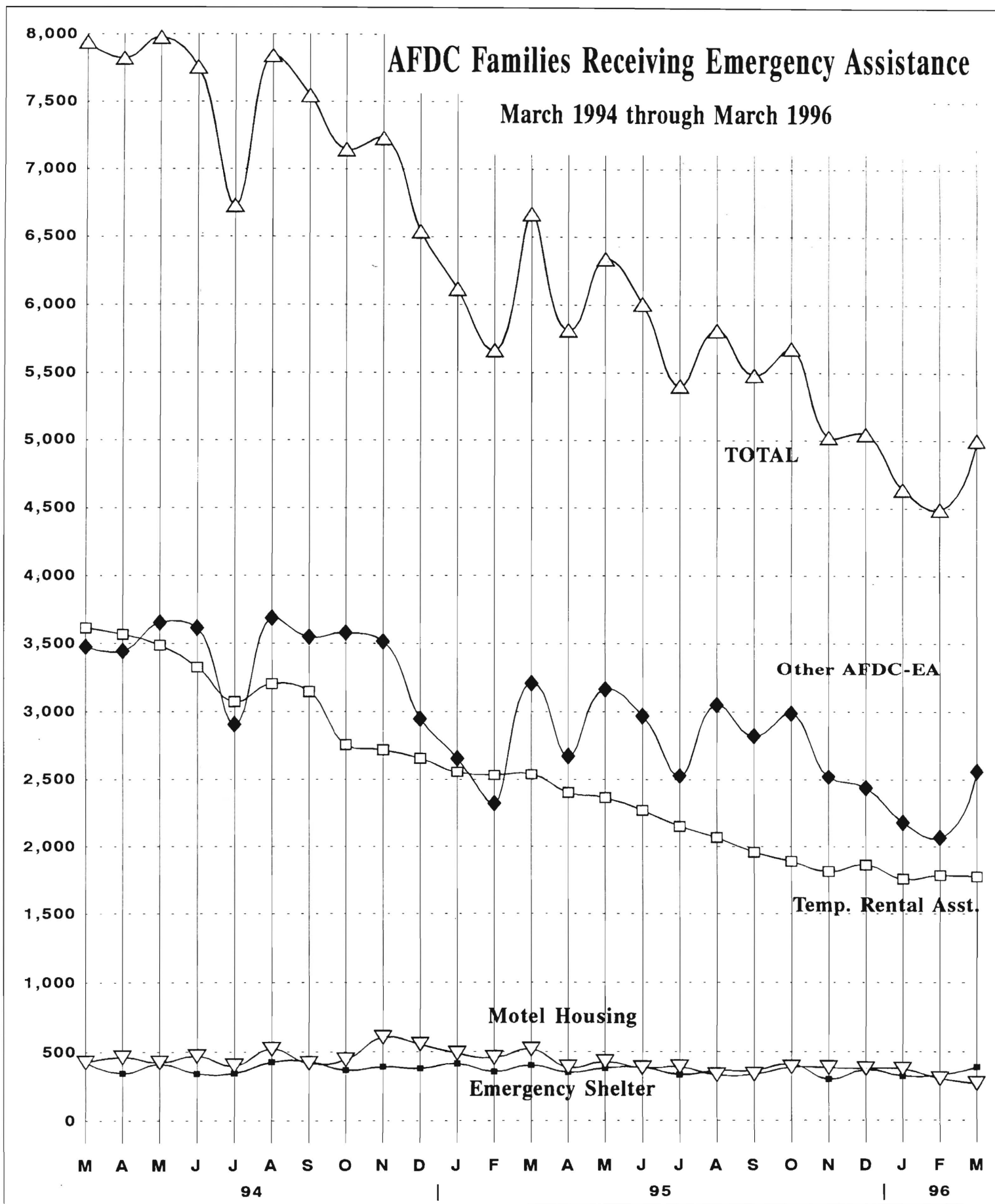
**NUMBER OF ELIGIBLE FAMILIES RECEIVING EMERGENCY ASSISTANCE PAYMENTS
(UNDUPLICATED CASES)
MARCH 1994 through MARCH 1996**

	Total families receiving EA	Temporary rental assist.	Motel Housing	Emergency Shelter	Other AFDC-EA
1994 MAR	7,942	3,616	425	424	3,477
APR	7,821	3,568	462	345	3,446
MAY	7,977	3,488	423	411	3,655
JUN	7,755	3,326	469	343	3,617
JUL	6,727	3,075	400	344	2,908
AUG	7,840	3,204	520	426	3,690
SEP	7,545	3,147	418	430	3,550
OCT	7,147	2,759	442	366	3,580
NOV	7,231	2,720	604	391	3,516
DEC	6,540	2,658	554	379	2,949
Average (12 mos.)	7,326	3,218	468	379	3,260
1995 JAN	6,115	2,557	487	413	2,658
FEB	5,664	2,535	456	354	2,319
MAR	6,668	2,542	516	402	3,208
APR	5,815	2,402	387	351	2,675
MAY	6,338	2,364	427	381	3,166
JUN	6,007	2,268	382	387	2,970
JUL	5,402	2,149	389	334	2,530
AUG	5,813	2,068	331	362	3,052
SEP	5,482	1,958	336	364	2,824
OCT	5,678	1,891	388	410	2,989
NOV	5,024	1,816	384	302	2,522
DEC	5,048	1,864	377	369	2,438
Average	5,755	2,201	405	369	2,779
1996 JAN	4,639	1,761	374	325	2,179
FEB	4,490	1,788	305	330	2,067
MAR	5,001	1,779	270	388	2,564
Average	4,710	1,776	316	348	2,270

GRAPH 7

AFDC Families Receiving Emergency Assistance

March 1994 through March 1996



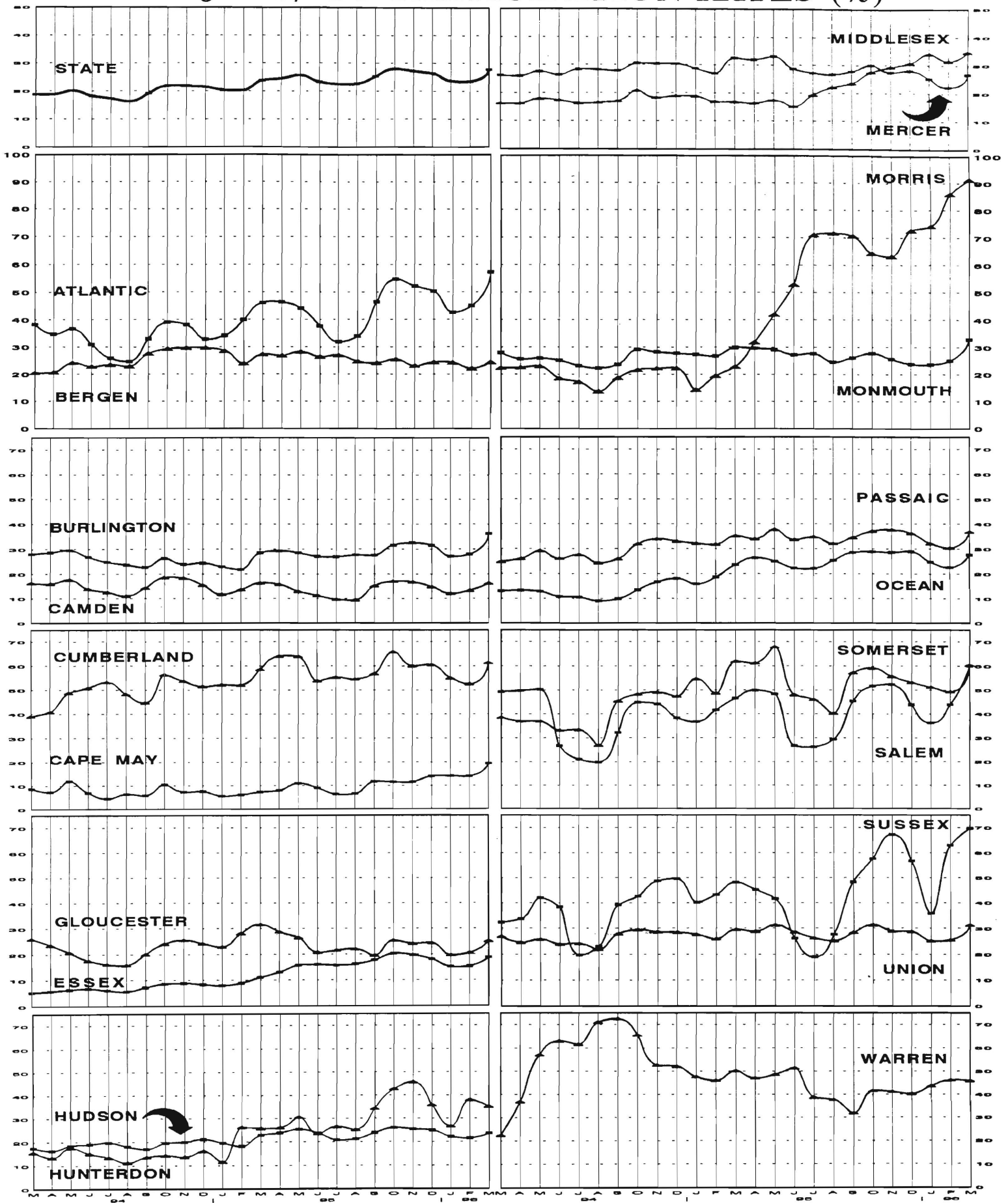
**New Jersey Department of Human Services
Division of Family Development**

**TABLE 8
JOBS/FDP PARTICIPATION RATES BY MONTH
(PERCENT)**

STATE	ATLAN- TIC	BERGEN	BURL- INGTON	CAMDEN	CAPE MAY	CUM- BERLAND	ESSEX	GLOU- CESTER	HUDSON	HUNTER- DON	MERCER	MIDDLE- SEX	MON- MOUTH	MORRIS	OCEAN	PASSAIC	SALEM	SOMER- SET	SUSSEX	UNION	WARREN	
1994 MAR	18.8	38.2	20.6	28.0	16.2	8.6	48.7	5.2	26.0	18.4	15.5	26.2	16.2	27.9	22.4	12.9	24.9	49.3	38.6	32.4	26.9	22.5
APR	18.9	34.7	20.7	28.6	16.0	7.2	50.8	5.7	23.6	19.0	13.3	26.0	16.2	25.7	22.6	13.2	26.0	49.8	37.0	33.7	24.6	37.0
MAY	20.1	36.6	24.2	29.6	17.6	11.8	53.2	6.3	20.7	19.7	17.5	27.6	17.9	26.0	23.1	12.7	29.2	50.3	37.0	42.0	25.8	57.1
JUN	18.3	31.0	22.9	26.8	13.8	6.9	48.3	6.7	17.6	18.1	15.0	26.4	17.4	25.2	18.6	10.8	26.1	26.7	33.2	38.3	23.9	63.0
JUL	17.3	26.0	23.5	24.7	12.6	4.4	44.7	6.0	16.2	17.0	13.3	28.4	16.3	23.2	17.3	10.6	27.7	21.2	33.4	19.7	24.2	61.5
AUG	16.3	24.8	23.0	23.7	11.1	6.3	45.1	5.5	15.8	15.7	11.1	28.3	16.5	22.3	13.7	9.0	24.3	19.8	26.9	23.0	21.8	71.0
SEP	19.1	33.0	27.6	22.7	14.3	5.8	52.5	7.2	20.0	17.9	13.4	27.9	17.1	23.7	18.7	9.9	25.9	32.2	45.4	39.2	27.9	72.5
OCT	21.8	39.0	29.3	26.2	18.5	10.4	56.4	8.5	24.0	19.5	14.2	30.5	20.8	29.2	21.7	13.4	31.9	44.8	48.3	42.6	29.5	65.4
NOV	21.8	38.0	29.7	23.9	18.3	7.3	53.7	8.8	25.5	20.0	13.5	30.4	18.2	28.2	22.2	16.7	33.9	44.2	49.1	48.7	28.7	52.6
DEC	21.5	32.8	29.7	24.4	15.5	7.5	51.5	8.3	24.2	21.1	16.1	30.4	18.8	27.8	22.4	18.1	33.0	38.3	47.4	49.6	28.6	52.2
1995 JAN	20.4	34.2	28.6	22.9	11.7	5.5	52.2	7.8	22.8	19.6	11.5	28.7	18.8	27.3	14.4	15.8	32.1	36.7	54.7	40.2	27.7	47.7
FEB	20.3	39.8	23.9	21.8	13.6	6.0	52.1	8.8	28.1	18.1	26.2	27.0	16.8	26.8	19.5	18.6	31.7	41.7	48.7	43.3	26.0	46.1
MAR	23.8	46.1	27.3	28.5	16.3	7.2	58.6	11.0	31.6	22.9	25.8	32.5	16.9	29.9	22.9	23.6	35.1	46.6	62.0	48.2	29.6	50.3
APR	24.5	46.3	26.9	29.2	15.7	7.9	64.1	13.0	28.7	23.8	26.1	31.9	16.3	29.6	31.9	26.4	33.9	50.0	61.3	45.3	28.9	47.2
MAY	25.7	44.0	28.3	28.6	12.9	10.9	64.0	15.7	26.4	25.4	30.6	33.1	17.4	29.1	42.0	25.0	37.7	48.4	68.0	41.7	31.4	48.7
JUN	23.3	37.7	26.5	27.1	11.3	9.0	53.8	16.0	20.7	23.8	23.5	28.7	15.1	27.2	52.9	22.3	33.6	26.7	48.1	26.1	28.6	51.5
JUL	22.5	31.9	27.0	26.9	9.8	6.3	55.3	15.8	21.5	20.8	26.6	27.3	19.2	27.7	71.0	22.1	34.7	26.3	46.1	19.0	26.3	38.9
AUG	22.6	33.9	24.8	27.7	9.5	6.5	54.6	16.2	22.0	21.2	25.2	26.7	22.0	24.5	71.7	25.4	32.0	29.4	40.3	27.7	25.2	37.8
SEP	25.2	46.4	24.2	27.6	15.1	11.7	56.9	17.7	19.5	23.8	34.3	27.8	23.6	26.2	70.7	28.6	34.5	45.3	57.3	48.4	28.4	32.0
OCT	27.9	54.6	25.5	31.5	17.1	11.4	65.9	20.2	25.3	26.0	42.7	30.1	27.5	27.8	64.4	28.9	37.0	51.7	59.3	57.5	31.4	41.7
NOV	27.2	52.2	23.1	32.5	16.8	11.5	60.2	19.7	24.1	25.4	45.8	27.4	29.3	25.6	63.3	28.6	37.6	52.4	55.8	67.2	29.0	41.3
DEC	26.4	50.3	24.5	31.5	14.8	13.9	60.6	18.1	24.4	25.0	35.9	28.0	30.6	23.9	72.6	28.9	36.2	43.9	53.2	56.7	28.8	40.3
1996 JAN	23.7	42.5	24.3	27.1	12.0	14.1	55.1	15.2	19.7	22.2	26.7	25.3	34.0	23.6	74.1	24.8	32.1	36.3	51.3	35.8	25.2	43.8
FEB	23.5	44.9	22.2	27.9	13.3	13.9	52.6	15.3	20.5	21.5	38.0	22.3	31.5	25.1	85.9	22.6	30.4	43.9	49.4	62.9	25.5	46.3
MAR	27.8	57.3	24.5	36.2	16.2	19.4	61.5	18.7	25.1	23.5	35.2	26.9	34.6	32.8	91.4	27.6	36.8	60.2	60.6	69.6	31.3	45.9

GRAPH 8

JOBS/FDP PARTICIPATION RATES (%)



New Jersey Department of Human Services
Division of Family Development

TABLE 9
GENERAL ASSISTANCE Program
State Summary

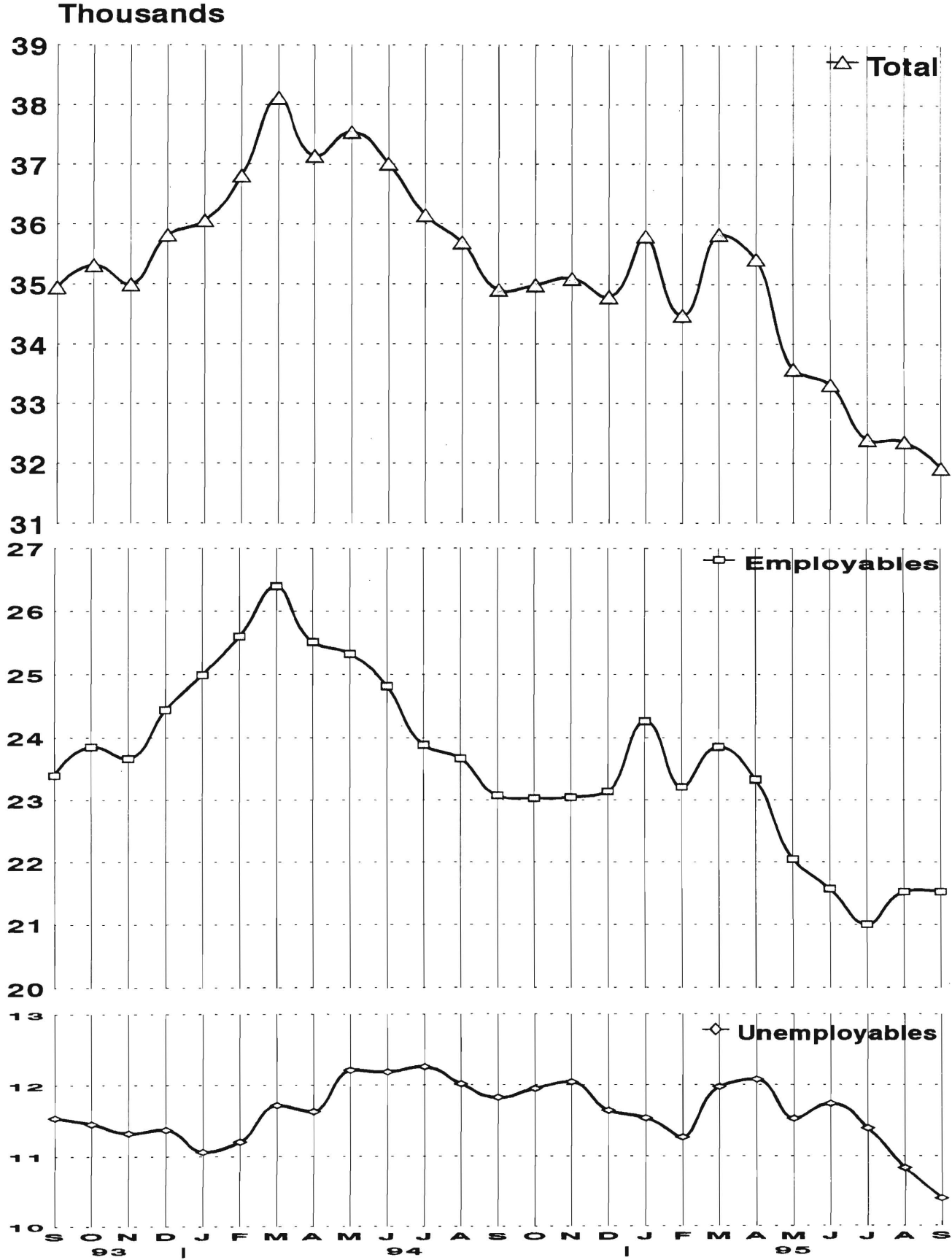
**NUMBER OF EMPLOYABLE AND UNEMPLOYABLE
RECIPIENTS DURING REPORT MONTH**
September 1993 through September 1995

		Number of Persons Aided		
		Employables	Unemployables	Total
1993	Sep	23,402	11,542	34,944
	Oct	23,853	11,455	35,308
	Nov	23,668	11,324	34,992
	Dec	24,435	11,374	35,809
AVERAGE (12 mos)		24,250	11,374	35,624
1994	Jan	24,992	11,062	36,054
	Feb	25,600	11,202	36,802
	Mar	26,397	11,719	38,116
	Apr	25,512	11,629	37,141
	May	25,327	12,212	37,539
	Jun	24,814	12,190	37,004
	Jul	23,884	12,261	36,145
	Aug	23,671	12,018	35,689
	Sep	23,075	11,825	34,900
	Oct	23,031	11,950	34,981
	Nov	23,046	12,045	35,091
	Dec	23,142	11,642	34,784
AVERAGE		24,486	11,828	36,315
1995	Jan	24,262	11,537	35,799
	Feb	23,219	11,264	34,483
	Mar	23,855	11,976	35,831
	Apr	23,337	12,082	35,419
	May	22,046	11,527	33,573
	June	21,575	11,738	33,313
	July	21,000	11,391	32,391
	August	21,526	10,829	32,355
	September	21,525	10,389	31,914
AVERAGE		22,483	11,415	33,898

Data Sources: Data is derived from NJ Division of Family Development

GRAPH 9 General Assistance Recipients

September 1993 through September 1995



New Jersey Department of Human Services
Division of Family Development

TABLE 10

CHILD SUPPORT AND PATERNITY
State Summary

Child Support and Paternity Collections

\$1000's

COLLECTION SOURCE	Fiscal Years			Most Recent Six Months		
	1994	1995	% change	7/94-12/94	7/95-12/95	% change
AFDC & FOSTER CARE						
Federal Tax	\$15,255	\$15,664	2.7%	\$1,246	\$1,931	55.0%
State Tax	1,970	1,762	-10.6%	979	1,075	9.8%
Unempl. Ins. Ben.	4,975	3,867	-22.3%	1,389	2,407	73.3%
Income Withholding	43,219	45,262	4.7%	22,146	22,562	1.9%
Other/Own Behalf	18,138	18,431	1.6%	9,031	8,011	-11.3%
From Other States	3,621	3,429	-5.3%	1,694	1,625	-4.0%
For Other States	5,269	6,873	30.5%	3,346	3,640	8.8%
TOTAL COLLECTION	\$92,447	\$95,289	3.1%	\$39,831	\$41,250	3.6%
NON- AFDC						
Federal Tax	\$6,547	\$6,822	4.2%	\$956	\$1,225	31.3%
State Tax	2,210	2,044	-7.5%	1,198	1,356	13.2%
Unempl. Ins. Ben.	15,110	13,338	-11.7%	5,183	7,799	50.5%
Income Withholding	214,405	251,694	17.4%	119,284	128,399	7.6%
Other/Own Behalf	144,715	156,899	8.4%	76,588	67,859	-11.4%
From Other States	19,969	20,835	4.3%	9,962	9,855	-1.1%
For Other States	20,015	27,338	36.6%	13,154	13,901	5.7%
TOTAL COLLECTION	\$422,970	\$478,969	13.2%	\$226,326	\$230,425	1.8%
TOTAL						
Federal Tax	\$21,802	\$22,486	3.1%	\$2,202	\$3,186	44.7%
State Tax	4,179	3,806	-8.9%	2,177	2,431	11.7%
Unempl. Ins. Ben.	20,085	17,205	-14.3%	6,573	10,206	55.3%
Income Withholding	257,624	296,957	15.3%	141,430	150,961	6.7%
Other/Own Behalf	162,853	175,329	7.7%	85,619	75,870	-11.4%
From Other States	23,590	24,264	2.9%	11,655	11,480	-1.5%
For Other States	25,284	34,211	35.3%	16,500	17,541	6.3%
TOTAL COLLECTION	\$515,417	\$574,258	11.4%	\$266,157	\$271,675	2.1%

Collection Source: Reflects Collections Recorded by County Probation Departments

Explanatory Notes

The Department of Human Services Division of Family Development provides basic income and an opportunity to achieve self-sufficiency for individuals and families served by the Division's programs. The Division provides leadership, direction and supervision to those public agencies responsible for administering those programs and plans for and develops policies to promote self-sufficiency.

AID TO FAMILIES WITH DEPENDENT CHILDREN (AFDC) - Financial assistance for dependent children and their natural or adoptive parents, or certain other relatives recognized as taking the place of a parent.

Regular AFDC (C Segment) - assistance when only one parent is in the home due to death or absence, or both parents are in the home but at least one is incapacitated.

Unemployed Parents (F Segment) - assistance when both parents are in the home, neither is incapacitated and the primary wage earner meets the federally defined criteria for unemployment.

State AFDC (N Segment) - assistance when both parents are in the home, neither is incapacitated, and the primary wage earner does not meet the federal definition of unemployment.

Medicaid Only - families no longer receiving AFDC financial assistance but remaining eligible for Medicaid under applicable provisions which extend coverage beyond period of AFDC assistance.

FOOD STAMP PROGRAM (FS) - Authorized by Congress as a nutritional supplement program to provide low income households with more food of greater variety and better nutrition. Program eligibility is based on household income, resources, and expenses for medical, shelter, and dependent care. CWA staff refer certain recipients to the New Jersey Department of Labor for participation in the Food Stamp Employment and Training Program.

EMERGENCY ASSISTANCE (EA) - Payments to those eligible for AFDC (also for Supplemental Security Income, or for General Assistance which is not included here), authorized during the 30 consecutive days immediately following the emergency (defined as a substantial loss of shelter, food; clothing; or household furnishings by fire, flood or other similar disaster) or if the eligible individual or family is in an imminent or actual state of homelessness.

JOBS/FDP

JOB OPPORTUNITY AND BASIC SKILLS PROGRAM (JOBS) - Federally mandated work/training program for recipients of AFDC established by the Family Support Act of 1988 under Part F of Title IV of the Social Security Act.

FAMILY DEVELOPMENT PROGRAM (FDP) - Reform legislation enacted by the State Legislature in January 1992 to: build, strengthen, and support the family unit; encourage family formation; reduce the long-term aspects of welfare dependency; look to the needs of the family unit as a whole; emphasize education and training for all family members; maximize use of educational, training and employment resources; and develop genuine private sector job opportunities.

SNAPSHOT OF ACTIVITY AT POINT IN TIME - Status of activities as of the end of the month:

Total Non-Exempt JOBS/FDP Recipients - Calculation of the number of mandatory IV-F individuals (FAMIS report # FB304).

Employment Directed Activities (EDA) - From Activities Summary Report (OMEGA report # RM064). Unduplicated count of persons participating in **Training, Education, or Job Search**.

Participants in EDA, Receiving Support Services - From Issuance Disbursement Summary (OMEGA report # RM703). Total number of active participants who show receipt of **Training Related Expenses or Child Care**.

Participation Rate (JOBS/FDP) - Federally mandated calculation method, dividing the number of participants whose combined and averaged weekly hours of participation in qualifying activities equals or exceeds 20 hours per week by the total number of non-exempt IV-F recipients. As of the end of the month.

ACTIVITY FOR THE MONTH - Number of participants with the indicated activity during the month:

Participants with First Case Management Interview - From Activities Summary Report (OMEGA report # RM064).

Number of Persons Employed This Month, Still Receiving AFDC - From Activities Summary Report (OMEGA report # RM064).

Number of Persons Closed on FAMIS Due to Earnings - From FAMIS report # FM463.

Post AFDC and Receiving Child Care - Persons no longer in receipt of AFDC, but still receiving child care. From Issuance Disbursement Summary (OMEGA report # RM703).

New Jersey Department of Human Services
Division of Family Development

TABLE 11**GENERAL ASSISTANCE Program**

NUMBER OF EMPLOYABLE AND UNEMPLOYABLE RECIPIENTS
DURING REPORT MONTH
COUNTIES AND 21 LARGEST MUNICIPALITIES

September 1995

County	Employables	Unemployables	Total	Municipality	Employables	Unemployables	Total
ATLANTIC	983	512	1,495	Atlantic City	811	293	1,104
BERGEN	538	487	1,025	Mount Holly	149	80	229
BURLINGTON	492	377	869	Camden	1,322	648	1,970
CAMDEN	1,709	1,046	2,755	Vineland	219	118	337
CAPE MAY	66	79	145	East Orange	588	430	1,018
CUMBERLAND	372	209	581	Irvington	252	49	301
ESSEX	7,412	2,041	9,453	Montclair	194	89	283
GLOUCESTER	163	164	327	Newark	5,859	1,249	7,108
HUDSON	1,154	1,142	2,296	Orange	404	55	459
HUNTERDON	39	45	84	Bayonne	114	52	166
MERCER	1,927	737	2,664	Hoboken	140	110	250
MIDDLESEX	534	542	1,076	Jersey City	616	502	1,118
MONMOUTH	813	666	1,479	Trenton	1,772	641	2,413
MORRIS	154	209	363	Perth Amboy	121	105	226
OCEAN	673	410	1,083	Asbury Park	211	95	306
PASSAIC	2,313	603	2,916	Long Branch	223	98	321
SALEM	124	72	196	Lakewood	287	101	388
SOMERSET	97	100	197	Passaic	623	261	884
SUSSEX	58	37	95	Paterson	1,538	192	1,730
UNION	1,837	864	2,701	Elizabeth	1,142	476	1,618
WARREN	67	47	114	Plainfield	281	142	423
NJ TOTAL	21,525	10,389	31,914	NJ TOTAL	16,866	5,786	22,652

New Jersey Department of Human Services
Division of Family Development

TABLE 12
CHILD SUPPORT AND PATERNITY

NUMBER OF CASES REMAINING OPEN, QUARTER ENDING MARCH 1996

	CASES WITH ORDERS			OTHER CASES (1)		TOTAL AFDC AND FOSTER CARE	TOTAL NON- AFDC	TOTAL ALL CASES
	AFDC AND FOSTER CARE	AFDC AND FOSTER CARE ARREARS (2)	NON- AFDC	AFDC AND FOSTER CARE	NON- AFDC			
Atlantic	2,723	4,157	9,989	3,925	5,026	10,805	15,015	25,820
Bergen	1,577	1,757	8,384	1,629	1,394	4,963	9,778	14,741
Burlington	1,979	2,708	9,380	2,321	3,026	7,008	12,406	19,414
Camden	9,797	9,779	21,640	10,300	8,053	29,876	29,693	59,569
Cape May	773	953	2,996	655	671	2,381	3,667	6,048
Cumberland	3,892	4,499	10,105	995	761	9,386	10,866	20,252
Essex	16,805	15,957	36,247	26,057	18,202	58,819	54,449	113,268
Gloucester	1,805	2,102	5,556	1,356	1,485	5,263	7,041	12,304
Hudson	8,075	7,575	19,231	12,768	9,517	28,418	28,748	57,166
Hunterdon	164	259	1,637	112	137	535	1,774	2,309
Mercer	4,349	5,078	12,188	4,482	4,401	13,909	16,589	30,498
Middlesex	3,144	4,332	14,156	4,189	4,345	11,665	18,501	30,166
Monmouth	3,565	4,522	12,518	2,522	2,689	10,609	15,207	25,816
Morris	450	448	3,545	808	886	1,706	4,431	6,137
Ocean	1,930	2,718	9,035	2,555	3,212	7,203	12,247	19,450
Passaic	5,459	5,738	15,441	6,303	5,914	17,500	21,355	38,855
Salem	1,080	1,395	3,261	390	351	2,865	3,612	6,477
Somerset	526	581	3,086	726	957	1,833	4,043	5,876
Sussex	320	553	2,257	243	299	1,116	2,556	3,672
Union	3,739	4,078	11,878	5,604	5,168	13,421	17,046	30,467
Warren	616	951	2,794	208	179	1,775	2,973	4,748
NJ TOTAL	72,768	80,140	215,324	88,148	76,673	241,056	291,997	533,053

Data Sources: Automated Child Support Enforcement System Report # CS199-3

(1) - Needing location, paternity or other services to establish an obligation

(2) - Cases with arrears *only*