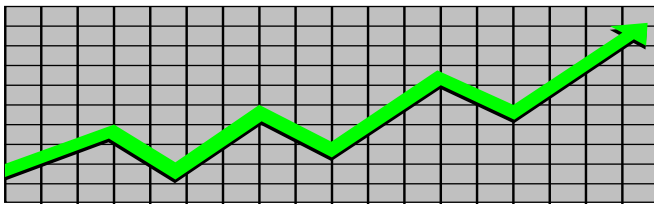


State of New Jersey
Department of Human Services
Division of Family Development

CURRENT PROGRAM STATISTICS



February 2025
Natasha Johnson, Assistant Commissioner

TABLE OF CONTENTS

HIGHLIGHTS:

WFNJ/TANF..... ii
NJ SNAP..... ii
EMERGENCY ASSISTANCE..... ii
GENERAL ASSISTANCE..... iii
GA Emergency Assistance..... iii
GA Program..... iii
CHILD SUPPORT SERVICES..... iii
WORK FIRST NEW JERSEY (WFNJ)..... iii
STATISTICS- BY STATE & COUNTY..... 1
Table 1: WFNJ/TANF Families & Persons (NJ Statewide) February 2023 to 2025..... 1
Table 2: WFNJ/TANF Families (by County)- February 2025..... 2
Table 2B: WFNJ/TANF Persons, Adults, & Children (by County)- February 2025..... 3
Table 3: TANF Work Participation Rates Over 12 Month Period (by County)- February 2025..... 4
Table 4: TANF Work Participation Rates Over 12 Month Period (NJ Statewide)- February 2025.... 5
Table 5: NJ SNAP Households/Persons (NJ Statewide) February 2023 to 2025..... 6
Table 6: NJ SNAP Recipient Trends (NJ Statewide) February 2023 to 2025..... 7
Table 7: NJ SNAP Households/Persons (by County)- February 2025..... 8
Table 8: Emergency Assistance Program (NJ Statewide) February 2023 to 2025..... 9
Table 9: Emergency Assistance Program (by County)- February 2025..... 10
Table 10: General Assistance Program (NJ Statewide) February 2023 to 2025..... 11
Table 11: General Assistance Program (by County)- February 2025..... 12
Table 12: Child Support Services Distributions (NJ Statewide) FFY 2025..... 13
Table 13: Child Support Services Paternities Established- February 2025..... 14
Table 14: Child Support Services Cases With Orders- February 2025..... 15
Table 15: Child Support Services Collections On Current Support- February 2025..... 16
Table 16: Child Support Services Cases With Payments On Arrears- February 2025..... 17
Table 17: WFNJ Statistical Summary- February 2025..... 18
ACRONYMS..... 19
EXPLANATORY NOTES..... 20
WFNJ Statistical Summary (Table 17)..... 20

DIVISION OF FAMILY DEVELOPMENT CURRENT PROGRAM STATISTICS FEBRUARY 2025

Each month the Division of Family Development publishes its program statistics for: WFNJ/TANF, NJ SNAP, Emergency Assistance, General Assistance, and Child Support Services. When possible, information is provided separately for children and adults. Many tables also provide trend data with information broken down by county for readers to consider. This report is compiled and prepared by The Bureau of Research & Reporting.

WFNJ/TANF

- As of the end of February, the TANF caseload had decreased by 844 cases, from 11,721 in February 2024 to 10,877 in February 2025; a decrease of -7.2%.
- The counties with caseloads that increased the most since February 2024 were Gloucester (16.7%), Cumberland (6.3%), and Salem (1.9%).
- The counties with caseloads that decreased the most since February 2024 were Hunterdon (-35.1%), Sussex (-24%), and Union (-20.6%).
- Of the WFNJ/TANF cases, 2,258 or 20.8% were child-only in February 2025.
- The counties with the most child-only cases were Camden (367), Hudson (299), and Essex (225).
- Hudson (5,274), Essex (3,937), and Camden (3,866) counties had the greatest number of persons receiving TANF in February 2025.

NJ SNAP (Formerly FOOD STAMPS)

- In February 2025, there were 437,155 households receiving NJ SNAP benefits. The number of NJ SNAP households increased by 8,810 or 2.1%, since February 2024.
- There were 817,023 persons receiving NJ SNAP benefits as of February 2025; an increase of 3,527 or 0.4% since February 2024.
- The counties having the highest SNAP caseload increase since February 2024 were Burlington (9.3%), Gloucester (8%), and Mercer (8%).
- The counties having the highest SNAP caseload decrease since February 2024 were Union (-6.4%), Atlantic (-4.3%), and Hunterdon (-2.1%).

EMERGENCY ASSISTANCE

- There were 1,748 TANF families receiving Emergency Assistance (EA) in February 2025; an increase of 102 or 6.2% since February 2024.
- In February 2025, EA payments were made for 568 SSI recipients.

DIVISION OF FAMILY DEVELOPMENT CURRENT PROGRAM STATISTICS FEBRUARY 2025

- There were 2,498 GA cases with Emergency Assistance payments in February 2025; an increase of 557 or 28.7% since February 2024.
- The counties that showed the highest percent increase in Emergency Assistance payments were Monmouth (113.2%), Hudson (106.3%), and Sussex (100%).
- The counties that showed the highest percent decrease in Emergency Assistance payments were Hunterdon (-50%), Salem (-50%), and Union (-38%).

GENERAL ASSISTANCE

- The total numbers of cases receiving GA has increased from 13,946 to 16,906 since February 2024; an increase of 21.2%.
- There were 12,874 Employable GA and 4,032 Unemployable GA cases in February 2025.
- The counties that showed a percent increase for GA cases were Gloucester (53.8%), Salem (41.2%), and Cape May (38.3%) since February 2024.
- The counties that showed the highest percent decrease for GA cases since February 2024 were Hunterdon (-21.2%), Sussex (-14.8%), and Ocean (-1.8%).
- In February 2025, GA cases showed a 0.97% increase since January 2025.

CHILD SUPPORT SERVICES (QUARTERLY REPORT)

- The total collection for the Child Support Services Program was about \$258 million from October 2024 to December 2024; an increase of 0.8% over the same period from FFY 2024.
- Total distributions decreased -0.7% from December 2023.

WORK FIRST NEW JERSEY (WFNJ)

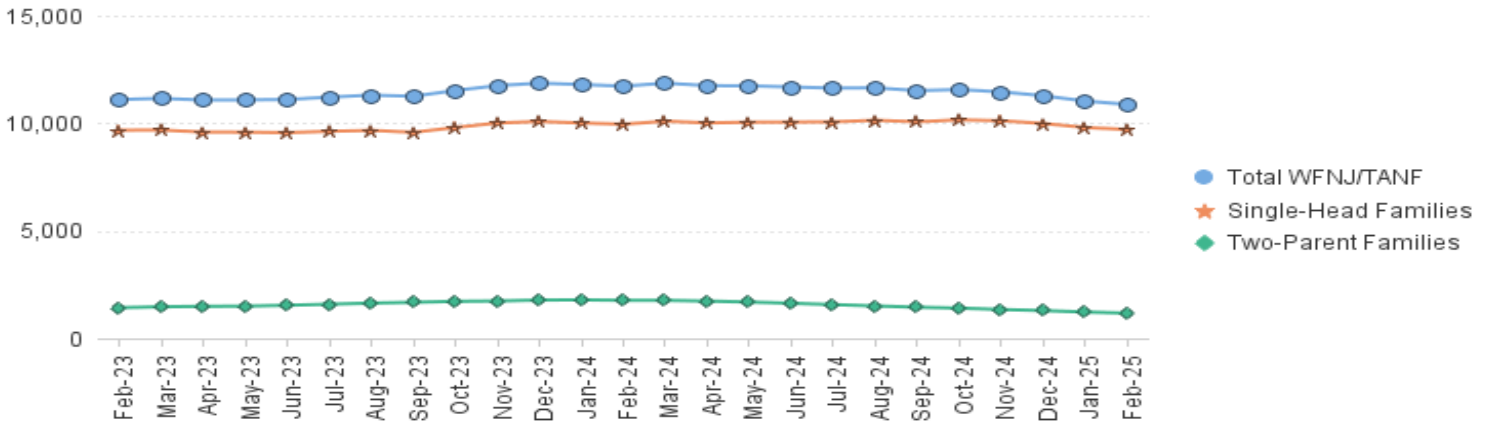
- During the report month of February 2025, there were 570 families in which at least one member was employed and an additional 195 families whose WFNJ assistance cases were closed due to employment - related earnings.
- The three counties with the greatest number of employed active WFNJ recipients were: Hudson (130), Essex (95), and Camden (66).
- There were 236 former TANF cases receiving post-TANF support in the form of child care assistance.

TABLE 1: WFNJ/TANF PROGRAM

STATEWIDE NUMBER OF APPLICATIONS AND TERMINATIONS DURING FEBRUARY 2025
 NUMBER OF ELIGIBLE FAMILIES & PERSONS RECEIVING WFNJ/TANF FOR FEBRUARY 2025
 FEBRUARY 2023 THROUGH FEBRUARY 2025

		Cases Added	Cases Closed	Child-Only Cases ‡	Total Single-Head Families	2-Parent Families	Total WFNJ/TANF Families	%CHNG (1 Yr.)	Total Persons	%CHNG (1 Yr.)	Adults	Children
2023	FEB	760	717	2,531	9,676	1,426	11,102	9.8%	30,019	12.7%	9,997	20,022
	MAR	822	864	2,565	9,683	1,470	11,153	7.5%	30,069	9.6%	10,058	20,011
	APR	739	858	2,548	9,587	1,490	11,077	5.9%	29,826	7.5%	10,019	19,807
	MAY	825	813	2,523	9,586	1,498	11,084	4.4%	29,863	6.0%	10,059	19,804
	JUN	827	855	2,500	9,562	1,540	11,102	4.0%	29,926	5.8%	10,142	19,784
	JUL	823	764	2,487	9,624	1,590	11,214	2.7%	30,222	4.1%	10,317	19,905
	AUG	887	841	2,445	9,666	1,638	11,304	2.5%	30,533	3.7%	10,497	20,036
	SEP	912	1,097	2,410	9,577	1,677	11,254	2.0%	30,443	3.2%	10,521	19,922
	OCT	944	891	2,463	9,800	1,722	11,522	4.3%	31,139	5.2%	10,781	20,358
	NOV	859	795	2,495	10,011	1,737	11,748	6.1%	31,776	6.4%	10,990	20,786
	DEC	900	836	2,484	10,080	1,781	11,861	6.4%	32,067	6.7%	11,158	20,909
	2023	Average	831	844	2,501	9,711	1,576	11,287		30,464		10,362
2024	JAN	819	879	2,456	10,010	1,790	11,800	7.1%	31,992	7.8%	11,134	20,858
	FEB	743	865	2,451	9,953	1,768	11,721	5.6%	31,775	5.8%	11,038	20,737
	MAR	784	797	2,453	10,095	1,767	11,862	6.4%	32,088	6.7%	11,176	20,912
	APR	832	944	2,414	10,014	1,733	11,747	6.0%	31,674	6.2%	11,066	20,608
	MAY	805	869	2,435	10,047	1,689	11,736	5.9%	31,556	5.7%	10,990	20,566
	JUN	816	920	2,444	10,054	1,631	11,685	5.3%	31,338	4.7%	10,872	20,466
	JUL	802	853	2,383	10,064	1,569	11,633	3.7%	31,312	3.6%	10,819	20,493
	AUG	864	932	2,370	10,138	1,508	11,646	3.0%	31,376	2.8%	10,784	20,592
	SEP	759	890	2,345	10,066	1,448	11,514	2.3%	30,858	1.4%	10,617	20,241
	OCT	894	894	2,352	10,157	1,406	11,563	0.4%	30,962	-0.6%	10,617	20,345
	NOV	797	936	2,336	10,115	1,342	11,457	-2.5%	30,753	-3.2%	10,463	20,290
	DEC	670	849	2,311	9,987	1,290	11,277	-4.9%	30,319	-5.5%	10,256	20,063
2024	Average	799	886	2,396	10,058	1,578	11,637		31,334		10,819	20,514
2025	JAN	732	1,001	2,289	9,802	1,226	11,028	-6.5%	29,582	-7.5%	9,965	19,617
	FEB	731	914	2,258	9,706	1,171	10,877	-7.2%	29,196	-8.1%	9,790	19,406
2025	Average To Date	732	958	2,274	9,754	1,199	10,953		29,389		9,878	19,512

NJ STATEWIDE
 Eligible Families Receiving WFNJ/TANF
 FEBRUARY 2023 THROUGH FEBRUARY 2025



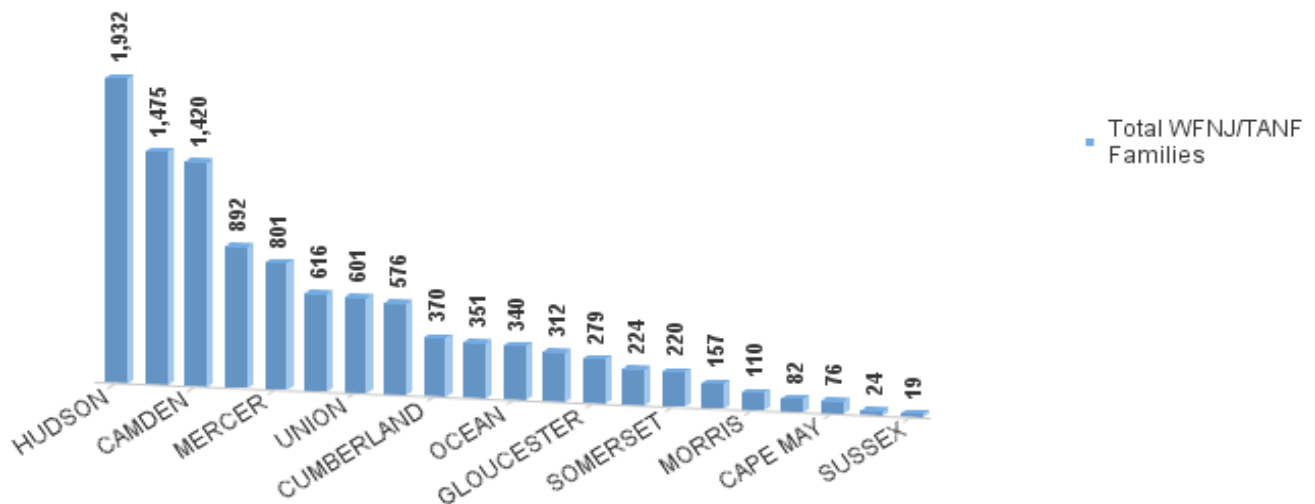
Data is derived from NJ MMIS Shared Data Warehouse Issuance files.
 Effective July 2013 this data query source was converted to the SDW

‡ Child-only cases are defined as families in which no eligible adult receives TANF program benefits, yet the family continues to be headed by at least one of the biological parents, or grandparents, or other appropriate adult.

TABLE 2:
WFNJ/TANF PROGRAM **NUMBER OF APPLICATIONS AND TERMINATIONS BY COUNTY DURING FEBRUARY 2025**
NUMBER OF ELIGIBLE FAMILIES RECEIVING WFNJ/TANF FOR FEBRUARY 2025

County	Cases Added	Cases Closed **	Child-	Total		Total		%CHNG (3 Mon)	%CHNG (1 Yr.)
			Only Cases ‡	1-Adult Single-Head Cases	2-Parent Families	WFNJ/TANF Families			
ATLANTIC	27	44	179	346	525	51	576	1.8%	-5.1%
BERGEN	28	28	59	211	270	42	312	2.3%	-19.6%
BURLINGTON	23	34	88	234	322	29	351	-5.6%	-8.4%
CAMDEN	70	92	367	939	1,306	114	1,420	-3.5%	-6.7%
CAPE MAY	5	2	24	47	71	5	76	5.6%	-10.6%
CUMBERLAND	42	27	107	232	339	31	370	7.9%	6.3% Δ
ESSEX	98	139	225	1,001	1,226	249	1,475	-6.1%	-18.1%
GLOUCESTER	30	26	64	187	251	28	279	-2.8%	16.7% Δ
HUDSON	137	162	299	1,422	1,721	211	1,932	-3.7%	-0.6%
HUNTERDON	0	0	3	17	20	4	24	9.1%	-35.1% *
MERCER	49	62	171	563	734	67	801	-5.7%	-8.7%
MIDDLESEX	43	57	166	407	573	43	616	-3.0%	1.0%
MONMOUTH	25	26	48	163	211	13	224	-3.4%	-12.5%
MORRIS	5	15	27	64	91	19	110	-7.6%	-5.2%
OCEAN	29	26	57	249	306	34	340	-3.1%	-0.6%
PASSAIC	47	58	179	637	816	76	892	-2.7%	-1.8%
SALEM	21	17	31	114	145	12	157	4.7%	1.9% Δ
SOMERSET	18	23	50	153	203	17	220	-4.3%	-7.9%
SUSSEX	3	1	7	10	17	2	19	5.6%	-24.0% *
UNION	25	64	90	392	482	119	601	-10.0%	-20.6% *
WARREN	6	11	17	60	77	5	82	-11.8%	-1.2%
NJ Total	731	914	2,258	7,448	9,706	1,171	10,877	-3.5%	-7.2%

**Total WFNJ/TANF Families
 FEBRUARY 2025
 By County**



Data is derived from NJ MMIS Shared Data Warehouse Issuance files.
 Effective July 2013 this data query source was converted to the SDW

‡ Child-only cases are defined as families in which no eligible adult receives TANF program benefits, yet the family continues to be headed by at least one of the biological parents, or grandparents, or other appropriate adult

** 'Cases closed' include cases that received a benefit in the prior month, but did not receive any TANF benefit for the report month.

Δ=higher caseload % change

*=lower caseload % change

TABLE 2B :

WFNJ/TANF PROGRAM

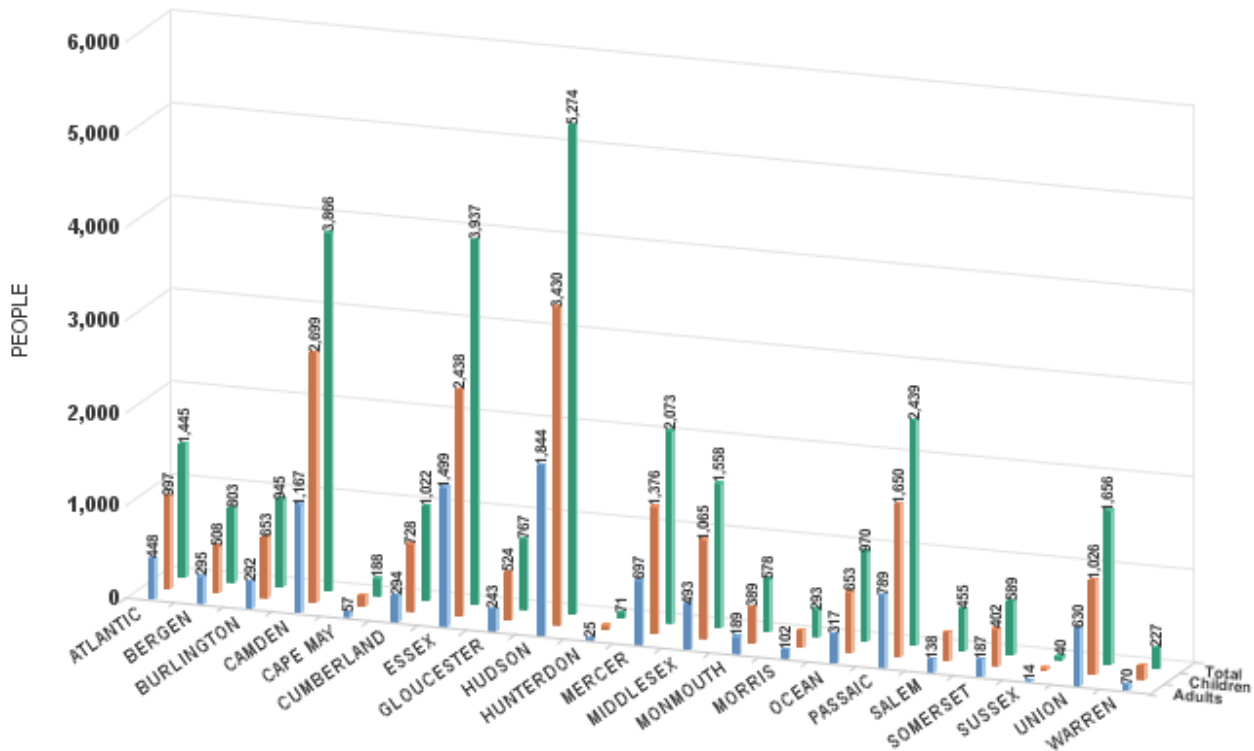
NUMBER OF PARTICIPATING PERSONS, ADULTS, AND CHILDREN BY COUNTY FOR FEBRUARY 2025

PERSONS

County	Adults	Children	Child/Adult Ratio	Total Persons	% Chng (1 Yr)	Persons Per Case
ATLANTIC	448	997	2.23	1,445	-7.4%	2.51
BERGEN	295	508	1.72	803	-20.3%	2.57
BURLINGTON	292	653	2.24	945	-9.6%	2.69
CAMDEN	1,167	2,699	2.31	3,866	-6.8%	2.72
CAPE MAY	57	131	2.30	188	-13.4%	2.47
CUMBERLAND	294	728	2.48	1,022	4.5% Δ	2.76
ESSEX	1,499	2,438	1.63	3,937	-21.7% *	2.67
GLOUCESTER	243	524	2.16	767	22.3% Δ	2.75
HUDSON	1,844	3,430	1.86	5,274	1.7%	2.73
HUNTERDON	25	46	1.84	71	-34.9% *	2.96
MERCER	697	1,376	1.97	2,073	-11.8%	2.59
MIDDLESEX	493	1,065	2.16	1,558	-1.3%	2.53
MONMOUTH	189	389	2.06	578	-17.2%	2.58
MORRIS	102	191	1.87	293	-10.4%	2.66
OCEAN	317	653	2.06	970	-2.2%	2.85
PASSAIC	789	1,650	2.09	2,439	-2.9%	2.73
SALEM	138	317	2.30	455	5.6% Δ	2.90
SOMERSET	187	402	2.15	589	-5.9%	2.68
SUSSEX	14	26	1.86	40	-28.6% *	2.11
UNION	630	1,026	1.63	1,656	-19.5%	2.76
WARREN	70	157	2.24	227	-5.0%	2.77
NJ Total	9,790	19,406	1.98	29,196	-8.1%	2.68

Δ=higher caseload % change

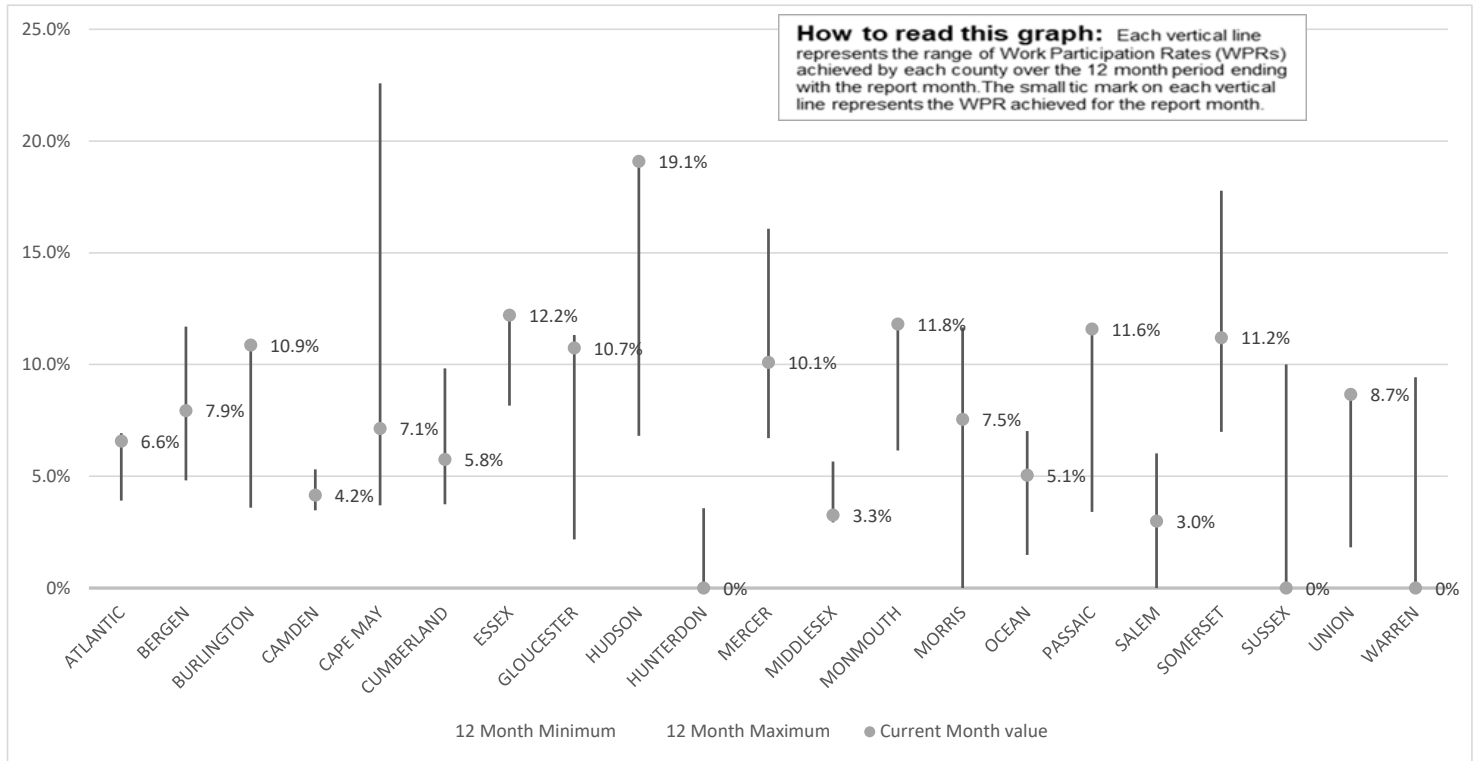
*=lower caseload % change



Data is derived from NJ MMIS Shared Data Warehouse Issuance files. Effective July 2013 this data query source was converted to the SDW

TABLE 3 :

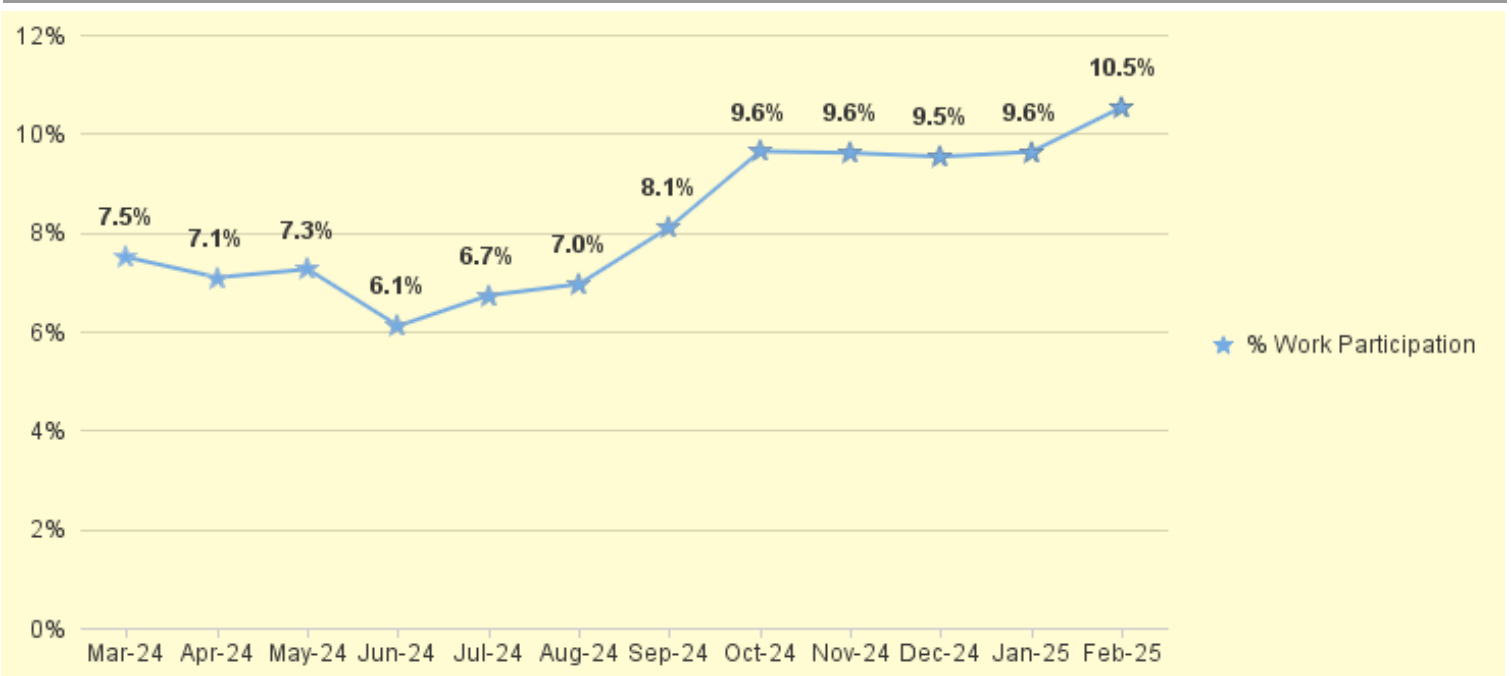
Work Participation Rates Achieved Over 12 Month Period
Ending with FEBRUARY 2025



Data is derived from NJ MMIS Shared Data Warehouse Issuance files.
Effective July 2013 this data query source was converted to the SDW

TABLE 4 :

WFNJ/TANF Work Participation Rates
for 12-Month Period Ending with FEBRUARY 2025 Statewide



* The Work Participation rate measures the number of countable Temporary Assistance for Needs Families (TANF) participants based on federal formula. The reported rate is considered to be preliminary until officially calculated by the federal government soon after the close of each federal fiscal year.

TABLE 5 : NJ SNAP (FOOD STAMPS) NUMBER OF PARTICIPATING HOUSEHOLDS, PERSONS, ADULTS AND CHILDREN FOR FEBRUARY 2025 (STATEWIDE)

FEBRUARY 2023 THROUGH FEBRUARY 2025

		HOUSEHOLDS				PERSONS				Age 60+	People with a disability
		WFNJ/TANF	Other low income	Total	% CHNG (1 YR)	Adults	Children	TOTAL	% CHNG (1 YR)		
2023	FEB	10,806	388,213	399,019	-13.7%	437,832	336,772	774,604	-12.9%	154,374	223,539
	MAR	12,027	407,914	419,941	-10.0%	460,274	373,470	833,744	-7.1%	156,031	227,136
	APR	11,987	408,628	420,615	-6.6%	460,514	370,535	831,049	-4.1%	156,584	227,434
	MAY	11,026	397,178	408,204	-6.0%	446,453	341,774	788,227	-5.6%	157,317	225,010
	JUN	11,193	399,666	410,859	-2.9%	449,079	343,009	792,088	-2.7%	157,999	225,250
	JUL	11,874	408,109	419,983	2.0%	458,990	363,129	822,119	3.4%	158,680	226,431
	AUG	11,445	398,827	410,272	-5.5%	448,110	340,718	788,828	-10.0%	158,893	224,313
	SEP	11,607	397,739	409,346	1.6%	446,467	338,291	784,758	-0.6%	160,208	225,665
	OCT	11,862	399,663	411,525	4.1%	448,591	338,651	787,242	3.2%	161,651	226,946
	NOV	11,994	404,810	416,804	4.9%	453,939	342,920	796,859	3.7%	162,683	227,481
	DEC	12,360	413,594	425,954	5.4%	464,039	351,241	815,280	3.9%	164,787	233,859
2023	Average	11,608	401,054	412,663		451,036	348,079	799,115		158,570	226,377
2024	JAN	12,147	413,384	425,531	6.5%	462,636	348,128	810,764	4.7%	164,794	231,669
	FEB	11,859	416,486	428,345	7.3%	465,489	348,007	813,496	5.0%	165,676	231,340
	MAR	12,058	426,988	439,046	4.5%	476,761	357,715	834,476	0.1%	167,855	233,743
	APR	11,717	426,510	438,227	4.2%	474,957	354,424	829,381	-0.2%	168,166	233,544
	MAY	11,715	431,264	442,979	8.5%	479,707	356,729	836,436	6.1%	169,629	234,656
	JUN	11,848	435,764	447,612	8.9%	484,805	359,806	844,611	6.6%	171,199	235,765
	JUL	11,626	432,725	444,351	5.8%	481,340	354,315	835,655	1.6%	171,322	234,963
	AUG	12,047	438,849	450,896	9.9%	488,286	358,835	847,121	7.4%	172,882	236,688
	SEP	11,733	432,439	444,172	8.5%	480,588	350,383	830,971	5.9%	172,370	235,245
	OCT	11,714	435,963	447,677	8.8%	484,036	353,435	837,471	6.4%	173,563	236,826
	NOV	11,621	435,899	447,520	7.4%	483,897	354,051	837,948	5.2%	174,605	237,983
	DEC	11,102	432,098	443,200	4.0%	479,225	350,243	829,468	1.7%	174,494	242,096
2024	Average	11,766	429,864	441,630		478,477	353,839	832,317		170,546	235,377
2025	JAN	10,684	427,742	438,426	3.0%	473,595	345,621	819,216	1.0%	174,024	239,748
	FEB	10,596	426,559	437,155	2.1%	472,395	344,628	817,023	0.4%	174,677	239,661
2025	Average To Date	10,640	427,151	437,791		472,995	345,125	818,120		174,351	239,705

This Table is based on those Households & Persons that received SNAP issuances (benefits) during the month

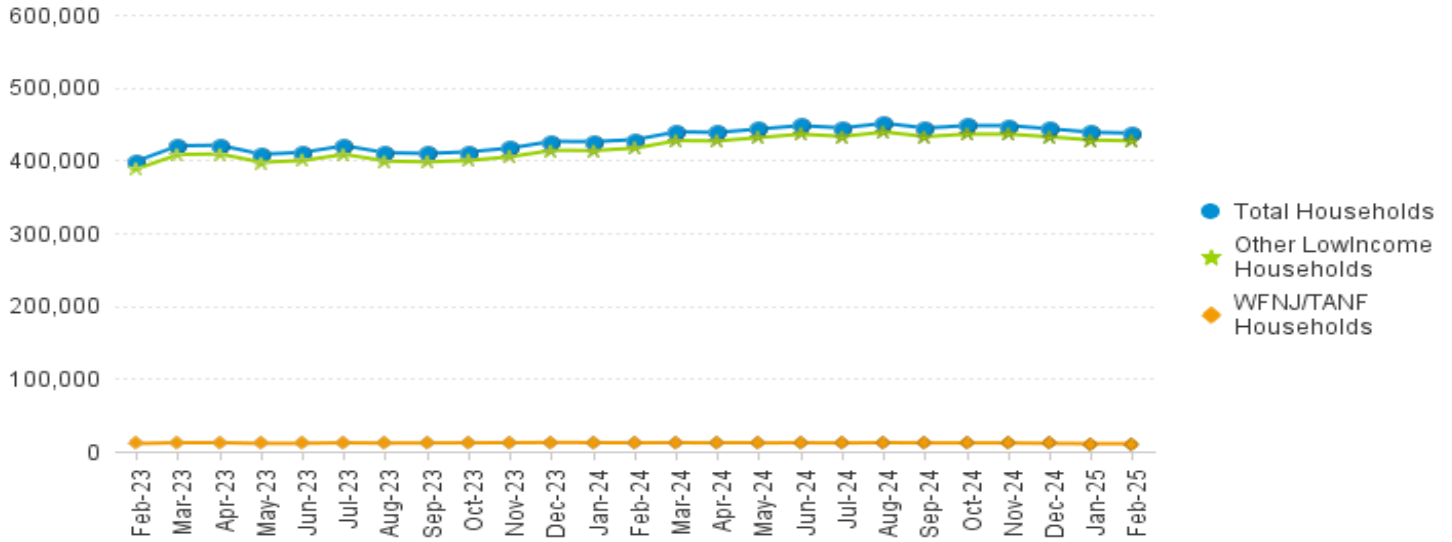
Data is derived from NJ MMIS Shared Data Warehouse.

Effective July 2013 this data query source was converted to the SDW.

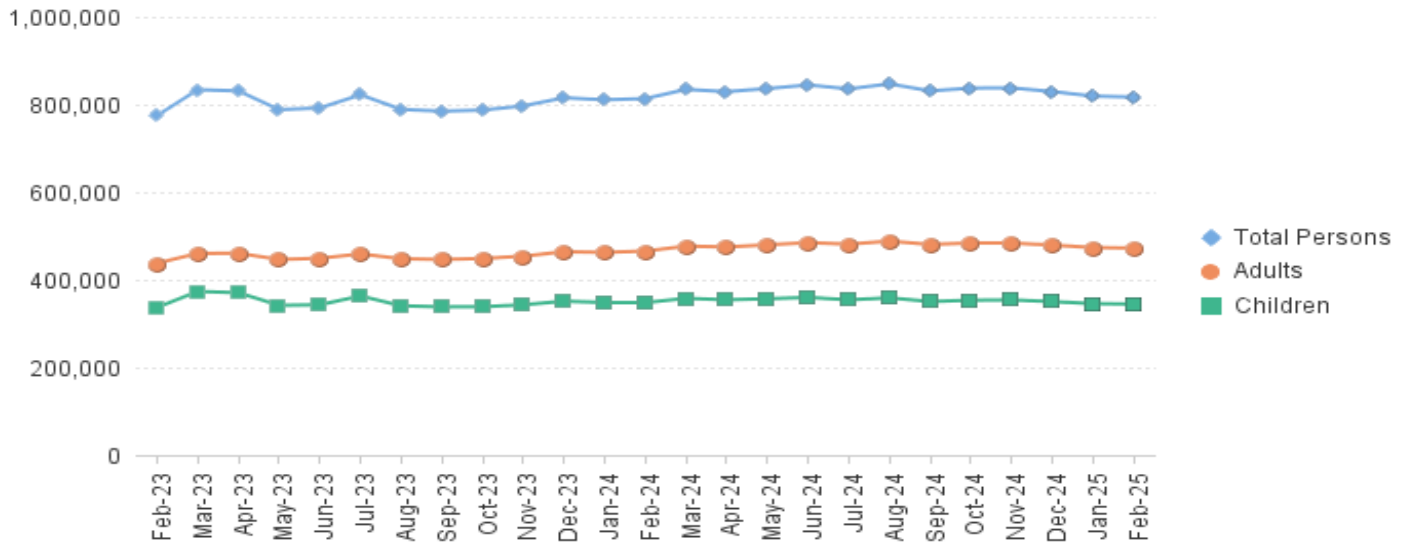
* Age 60+ and People with a disability columns are independent subsets of total persons. An individual might appear in both columns

**TABLE 6: NJ SNAP (FOOD STAMPS)
TRENDS FOR PARTICIPATING HOUSEHOLDS & PERSONS
FEBRUARY 2023 THROUGH FEBRUARY 2025 (STATEWIDE)**

Statewide NJ SNAP Households: FEBRUARY 2023 Through FEBRUARY 2025



Statewide NJ SNAP Persons: FEBRUARY 2023 Through FEBRUARY 2025



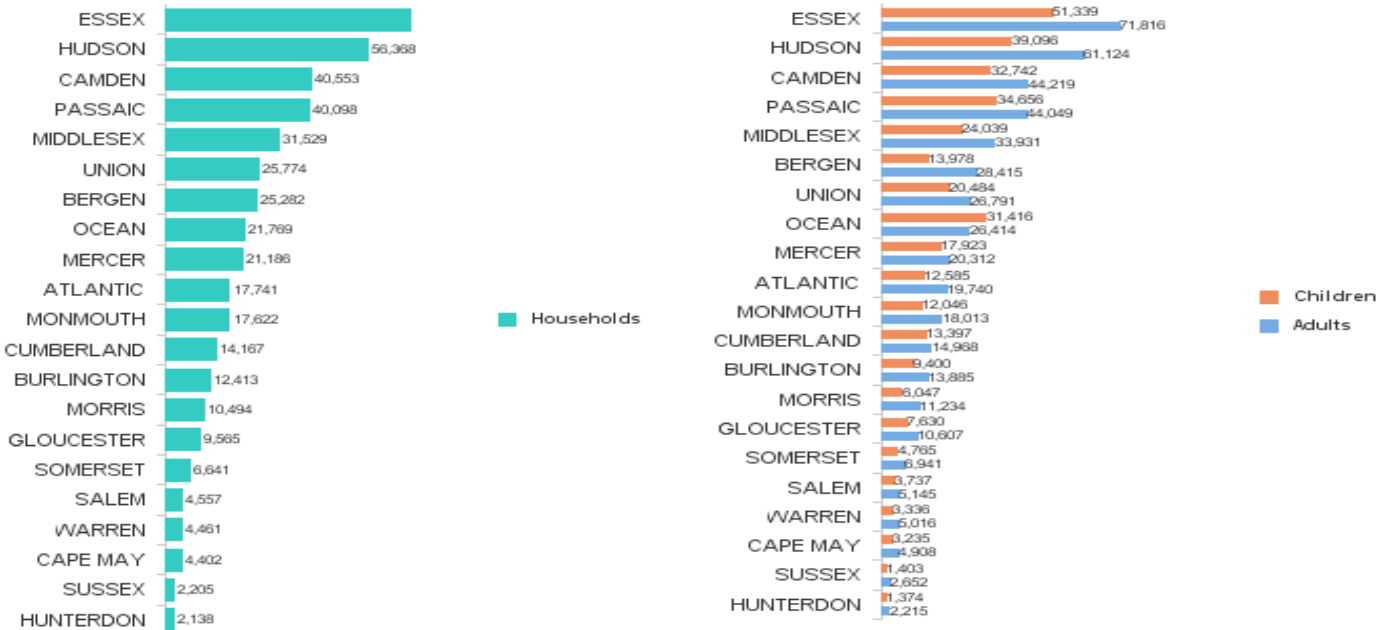
Data is derived from NJ MMIS Shared Data Warehouse Issuance files.
Effective July 2013 this data query source was converted to the SDW

**TABLE 7 :
NJ SNAP
NUMBER OF PARTICIPATING HOUSEHOLDS, PERSONS, ADULTS
AND CHILDREN BY COUNTY FOR FEBRUARY 2025**

County	HOUSEHOLDS				PERSONS				Age 60+	People with a disability
	WFNJ/TANF	Other low income	TOTAL	% Chng (1 Yr)	Adults	Children	TOTAL	% Chng (1 Yr)		
ATLANTIC	524	17,217	17,741	-4.3% *	19,740	12,585	32,325	-6.6% *	6,970	10,141
BERGEN	314	24,968	25,282	4.5%	28,415	13,978	42,393	4.0%	15,773	17,745
BURLINGTON	559	11,854	12,413	9.3% Δ	13,885	9,400	23,285	8.3% Δ	4,297	7,255
CAMDEN	1,304	39,249	40,553	5.2%	44,219	32,742	76,961	4.0%	12,510	20,676
CAPE MAY	87	4,315	4,402	1.4%	4,908	3,235	8,143	-0.6%	1,494	2,349
CUMBERLAND	337	13,830	14,167	4.5%	14,968	13,397	28,365	2.8%	4,150	7,654
ESSEX	1,506	66,684	68,190	0.6%	71,816	51,339	123,155	-1.8%	22,656	32,640
GLOUCESTER	262	9,303	9,565	8.0% Δ	10,607	7,630	18,237	7.9% Δ	3,413	6,399
HUDSON	1,746	54,622	56,368	-1.3%	61,124	39,096	100,220	-3.9% *	24,804	30,179
HUNTERDON	35	2,103	2,138	-2.1% *	2,215	1,374	3,589	-0.4%	907	1,285
MERCER	790	20,396	21,186	8.0% Δ	20,312	17,923	38,235	7.4% Δ	6,350	10,914
MIDDLESEX	611	30,918	31,529	5.5%	33,931	24,039	57,970	5.1%	15,718	19,683
MONMOUTH	232	17,390	17,622	-1.0%	18,013	12,046	30,059	-3.0%	7,697	10,350
MORRIS	119	10,375	10,494	7.1%	11,234	6,047	17,281	6.2%	5,715	6,289
OCEAN	337	21,432	21,769	0.9%	26,414	31,416	57,830	-1.6%	8,095	11,830
PASSAIC	858	39,240	40,098	3.6%	44,049	34,656	78,705	1.5%	17,206	20,622
SALEM	148	4,409	4,557	4.6%	5,145	3,737	8,882	0.5%	1,369	2,434
SOMERSET	198	6,443	6,641	4.7%	6,941	4,765	11,706	3.2%	3,051	4,146
SUSSEX	25	2,180	2,205	2.7%	2,652	1,403	4,055	0.2%	1,036	1,623
UNION	519	25,255	25,774	-6.4% *	26,791	20,484	47,275	-5.7% *	9,835	12,697
WARREN	85	4,376	4,461	6.7%	5,016	3,336	8,352	5.2%	1,631	2,750
NJ TOTAL	10,596	426,559	437,155	2.1%	472,395	344,628	817,023	0.4%	174,677	239,661

Δ=higher caseload % change *=lower caseload % change

**Total NJ SNAP Recipients
FEBRUARY 2025 by County**



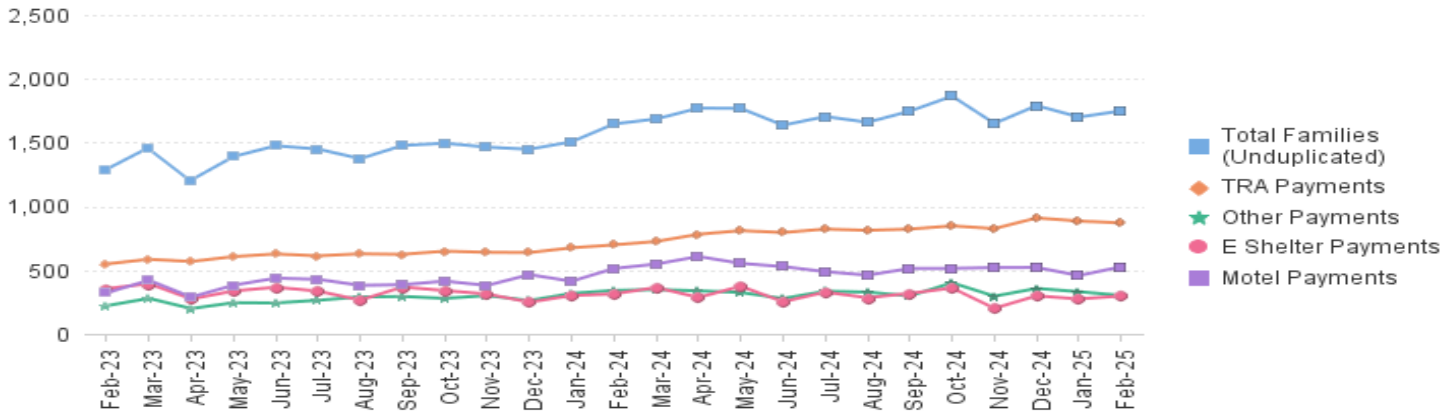
Data is derived from NJ MMIS Shared Data Warehouse.
Effective July 2013 this data query source was converted to the SDW.

* Age 60+ and People with a disability columns are independent subsets of total persons. An individual might appear in both columns

TABLE 8 : EMERGENCY ASSISTANCE (STATEWIDE) TOTAL NUMBER OF ELIGIBLE FAMILIES RECEIVING EMERGENCY ASSISTANCE PAYMENTS FEBRUARY 2023 THROUGH FEBRUARY 2025 - STATEWIDE

		Total WFNJ/EA Families (Undupl)	% CHNG (1 YR)	Temp Rent Asst. Payments (Undupl)	% CHNG (1 YR)	Motel Housing Payments (Undupl)	% CHNG (1 YR)	Shelter/Transitional Housing Payments (Undupl)	% CHNG (1 YR)	Other WFNJ/EA Payments (Undupl)	% CHNG (1 YR)
2023	FEB	1,291	6.0%	549	-23.8%	322	113.2%	355	29.6%	221	5.2%
	MAR	1,462	4.7%	585	-24.3%	421	112.6%	394	18.7%	279	3.0%
	APR	1,206	-5.9%	568	-27.8%	289	72.0%	274	3.4%	199	-11.9%
	MAY	1,390	1.0%	606	-23.5%	382	109.9%	337	2.7%	245	2.5%
	JUN	1,475	6.3%	627	-21.7%	437	95.1%	366	32.1%	243	12.5%
	JUL	1,449	8.7%	612	-24.6%	428	101.9%	336	38.8%	264	3.5%
	AUG	1,374	-8.9%	628	-26.0%	381	56.8%	265	-26.0%	290	19.3%
	SEP	1,477	7.2%	624	-16.5%	386	76.3%	368	9.2%	294	46.3%
	OCT	1,495	23.9%	649	9.6%	414	76.9%	340	26.9%	279	3.7%
	NOV	1,464	36.6%	640	15.7%	380	81.0%	313	40.4%	301	48.3%
	DEC	1,448	21.0%	638	16.8%	465	66.1%	249	-9.8%	262	8.7%
	2023 Average		1,398		608		385		325		258
2024	JAN	1,506	20.5%	675	19.7%	413	33.2%	301	0.7%	318	42.0%
	FEB	1,646	27.5%	698	27.1%	513	59.3%	314	-11.5%	341	54.3%
	MAR	1,685	15.3%	725	23.9%	548	30.2%	364	-7.6%	348	24.7%
	APR	1,770	46.8%	781	37.5%	607	110.0%	286	4.4%	338	69.8%
	MAY	1,768	27.2%	810	33.7%	553	44.8%	374	11.0%	325	32.7%
	JUN	1,636	10.9%	795	26.8%	528	20.8%	252	-31.1%	278	14.4%
	JUL	1,704	17.6%	822	34.3%	488	14.0%	328	-2.4%	335	26.9%
	AUG	1,659	20.7%	812	29.3%	461	21.0%	284	7.2%	328	13.1%
	SEP	1,746	18.2%	822	31.7%	513	32.9%	318	-13.6%	298	1.4%
	OCT	1,864	24.7%	847	30.5%	514	24.2%	360	5.9%	401	43.7%
	NOV	1,650	12.7%	826	29.1%	520	36.8%	201	-35.8%	296	-1.7%
	DEC	1,790	23.6%	909	42.5%	521	12.0%	299	20.1%	357	36.3%
2024 Average		1,702		794		515		307		330	
2025	JAN	1,700	12.9%	885	31.1%	458	10.9%	274	-9.0%	331	4.1%
	FEB	1,748	6.2%	870	24.6%	526	2.5%	298	-5.1%	302	-11.4%
2025 Average To Date		1,724		878		492		286		317	

NJ STATEWIDE Families Receiving Emergency Assistance FEBRUARY 2023 THROUGH FEBRUARY 2025



* Effective Feb '11 Transitional Housing Payments were removed from 'Other EA Payments' and added to 'Shelter Payments'.

TABLE 9 :
EMERGENCY ASSISTANCE (BY COUNTY)
TOTAL NUMBER OF ELIGIBLE FAMILIES RECEIVING EMERGENCY ASSISTANCE PAYMENTS BY COUNTY (UNDUPLICATED CASES) FOR FEBRUARY 2025

County	TOTAL WFNJ/EA Families (Undupl)	% CHNG From FEB 24	Temp Rent Asst. Payments (Undupl)	Motel Housing Payments (Undupl)	Shelter/Transitional Housing Payments (Undupl)	Other WFNJ/EA Payments (Undupl)	SSI Receipts Receiving EA **
ATLANTIC	59	11.3%	36	18	0	15	50
BERGEN	41	5.1%	23	1	10	8	13
BURLINGTON	195	25.8% Δ	18	131	54	6	3
CAMDEN	68	13.3%	14	27	31	5	19
CAPE MAY	24	-11.1%	3	22	0	2	8
CUMBERLAND	8	-20.0%	0	0	7	2	2
ESSEX	106	-11.7%	52	0	48	14	14
GLOUCESTER	30	-3.2%	3	10	13	11	13
HUDSON	387	1.6%	283	105	3	73	96
HUNTERDON	2	-60.0% *	1	1	0	0	0
MERCER	174	10.8%	105	48	24	29	77
MIDDLESEX	108	28.6% Δ	51	30	7	38	61
MONMOUTH	62	31.9% Δ	2	30	35	0	51
MORRIS	18	-21.7%	15	2	0	2	23
OCEAN	61	19.6%	27	33	0	16	14
PASSAIC	199	19.9%	151	9	26	30	36
SALEM	3	-50.0% *	2	0	0	1	4
SOMERSET	85	-4.5%	46	22	9	25	52
SUSSEX	1	-85.7% *	0	0	1	0	10
UNION	99	-15.4%	28	29	30	20	21
WARREN	18	0%	10	8	0	5	1
NJ Total	1,748	6.2%	870	526	298	302	568

Δ=higher caseload % change

*=lower caseload % change

** SSI-EA includes pay codes 22 and 24, data is derived from NJ Division of Family Development FAMIS Report #FM430-03A

WFNJ/EA data is derived from NJ MMIS Shared Data Warehouse.

Effective July 2013 this data query source was converted to the SDW.

Number WFNJ Families Receiving EA by County FEBRUARY 2025

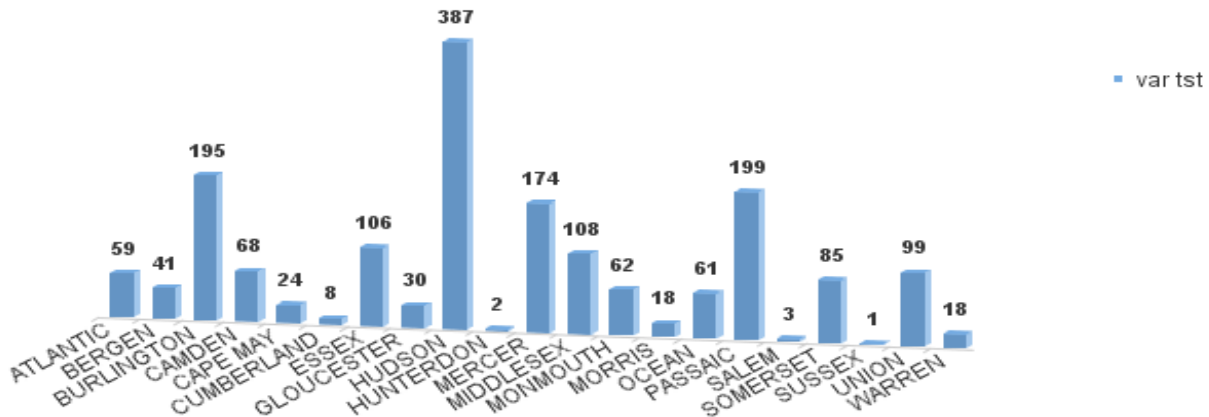
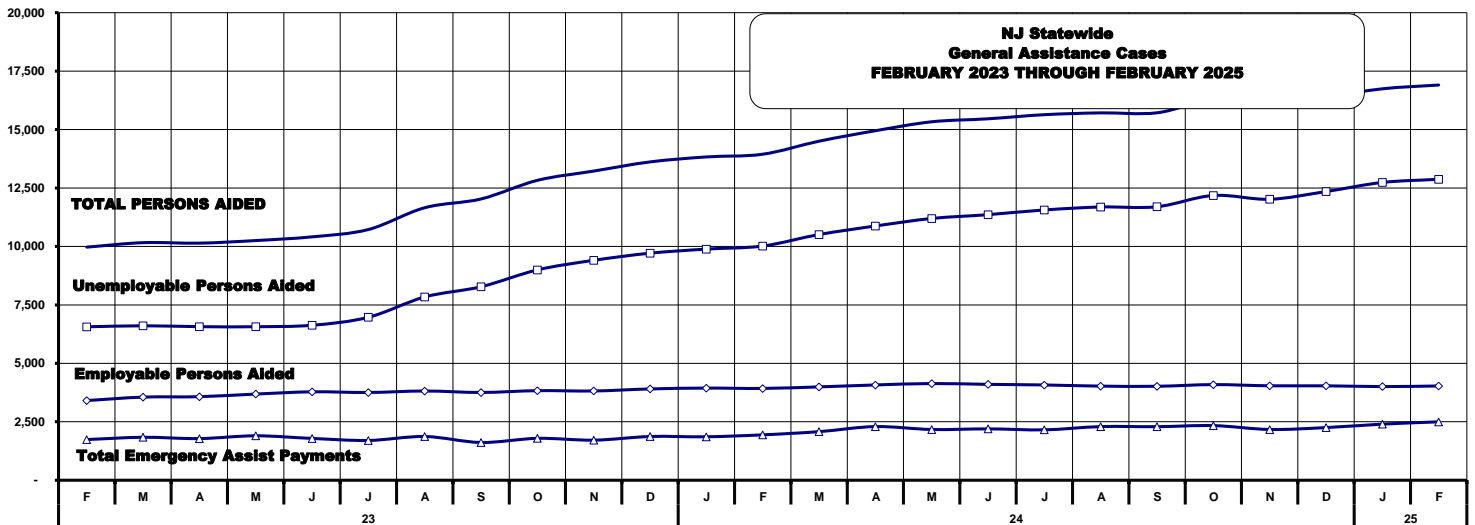


TABLE 10: GENERAL ASSISTANCE PROGRAM
NUMBER OF EMPLOYABLE AND UNEMPLOYABLE RECIPIENTS AND EMERGENCY ASSISTANCE PAYMENTS - STATEWIDE
FEBRUARY 2023 THROUGH FEBRUARY 2025

PROGRAM	Total Cases						Emergency Assistance Cases			
	Employable	% Chng (1 Yr)	Unemployable	% Chng (1 Yr)	Total	% Chng (1 Yr)	Temporary Rental Assistance	Other GA-EA	Total	% Chng (1 Yr)
2023										
FEB	6,563	-38.6%	3,408	-10.6%	9,971	-31.2%	570	1,170	1,740	-6.1%
MAR	6,607	-42.4%	3,555	-8.1%	10,162	-33.7%	586	1,251	1,837	-10.8%
APR	6,569	-44.4%	3,573	-6.5%	10,142	-35.1%	623	1,158	1,781	-8.1%
MAY	6,567	-45.5%	3,686	-3.1%	10,253	-35.3%	634	1,267	1,901	-0.1%
JUN	6,629	-46.1%	3,782	-2.0%	10,411	-35.6%	633	1,155	1,788	-12.0%
JUL	6,971	-44.0%	3,754	-2.8%	10,725	-34.3%	605	1,097	1,702	-12.9%
AUG	7,840	-19.9%	3,817	14.2%	11,657	-11.2%	602	1,268	1,870	-10.4%
SEP	8,277	-1.1%	3,755	16.4%	12,032	3.8%	610	1,005	1,615	-14.8%
OCT	8,997	14.9%	3,831	16.4%	12,828	15.4%	583	1,209	1,792	1.9%
NOV	9,407	28.6%	3,818	14.8%	13,225	24.3%	600	1,114	1,714	4.4%
DEC	9,712	39.7%	3,905	14.4%	13,617	31.4%	598	1,272	1,870	6.5%
2023 AVERAGE	7,575		3,694		11,269		603	1,173	1,776	
2024										
JAN	9,888	46.3%	3,942	14.4%	13,830	35.5%	612	1,247	1,859	9.2%
FEB	10,019	52.7%	3,927	15.2%	13,946	39.9%	513	1,428	1,941	11.6%
MAR	10,510	59.1%	3,993	12.3%	14,503	42.7%	629	1,449	2,078	10.0%
APR	10,875	65.6%	4,075	14.0%	14,950	47.4%	659	1,636	2,295	28.9%
MAY	11,197	70.5%	4,136	12.2%	15,333	49.5%	680	1,490	2,170	14.2%
JUN	11,360	71.4%	4,101	8.4%	15,461	48.5%	696	1,501	2,197	22.9%
JUL	11,562	65.9%	4,075	8.6%	15,637	45.8%	662	1,494	2,156	26.7%
AUG	11,689	49.1%	4,025	5.4%	15,714	34.8%	749	1,545	2,294	22.7%
SEP	11,699	41.3%	4,019	7.0%	15,718	30.6%	761	1,529	2,290	41.8%
OCT	12,182	35.4%	4,090	6.8%	16,272	26.8%	766	1,571	2,337	30.4%
NOV	12,019	27.8%	4,039	5.8%	16,058	21.4%	784	1,387	2,171	26.7%
DEC	12,349	27.2%	4,039	3.4%	16,388	20.3%	766	1,486	2,252	20.4%
2024 AVERAGE	11,279		4,038		15,318		690	1,480	2,170	
2025										
JAN	12,738	28.8%	4,006	1.6%	16,744	21.1%	814	1,586	2,400	29.1%
FEB	12,874	28.5%	4,032	2.7%	16,906	21.2%	861	1,637	2,498	28.7%
2025 AVERAGE TO DATE	12,806		4,019		16,825		838	1,612	2,449	



**TABLE 11:
GENERAL
ASSISTANCE
PROGRAM**

**EMPLOYABLE AND UNEMPLOYABLE CASES
AND EMERGENCY ASSISTANCE CASES RECEIVING PAYMENTS BY COUNTY
FEBRUARY 2025**

	<u>Total Cases</u>				<u>Emergency Assistance Cases</u>					
	Employable	% Chng (1 Yr)	Unemployable	% Chng (1 Yr)	Total	% Chng (1 Yr)	Temporary Rental Assistance	Other GA-EA	Total	% Chng (1 Yr)
ATLANTIC	1,103	11.2%	149	-5.1%	1,252	9.0%	120	61	181	66.1%
BERGEN	408	26.7%	217	-13.5%	625	9.1%	63	29	92	22.7%
BURLINGTON	488	45.7%	201	8.6%	689	32.5%	14	166	180	80.0%
CAMDEN	1,780	20.9%	490	1.4%	2,270	16.1%	30	114	144	29.7%
CAPE MAY	244	50.6%	52	0.0%	296	38.3% Δ	16	74	90	2.3%
CUMBERLAND	525	31.9%	204	10.3%	729	25.0%	3	20	23	-20.7%
ESSEX	1,391	41.8%	296	23.3%	1,687	38.2%	36	163	199	32.7%
GLOUCESTER	297	82.2%	129	13.2%	426	53.8% Δ	4	30	34	13.3%
HUDSON	1,921	43.0%	303	-16.8%	2,224	30.3%	215	144	359	106.3% Δ
HUNTERDON	41	-37.9%	48	2.1%	89	-21.2% *	2	12	14	-50.0% *
MERCER	706	39.0%	283	15.0%	989	31.2%	41	56	97	-12.6%
MIDDLESEX	511	48.1%	324	-5.8%	835	21.2%	65	84	149	-0.7%
MONMOUTH	455	35.4%	250	9.6%	705	25.0%	3	159	162	113.2% Δ
MORRIS	253	20.5%	158	-2.5%	411	10.5%	44	29	73	1.4%
OCEAN	417	-2.6%	227	-0.4%	644	-1.8% *	13	118	131	98.5%
PASSAIC	855	42.3%	199	17.8%	1,054	36.9%	92	44	136	61.9%
SALEM	202	55.4%	55	5.8%	257	41.2% Δ	4	2	6	-50.0% *
SOMERSET	350	12.5%	92	-3.2%	442	8.9%	41	153	194	33.8%
SUSSEX	28	-24.3%	24	0.0%	52	-14.8% *	0	12	12	100.0% Δ
UNION	810	2.9%	257	6.2%	1,067	3.7%	44	137	181	-38.0% *
WARREN	89	-3.3%	74	25.4%	163	7.9%	11	30	41	24.2%
NJ TOTAL	12,874	28.5%	4,032	2.7%	16,906	21.2%	861	1,637	2,498	28.7%

Δ= ↑ Caseload %

* = ↓ Caseload %

**TABLE 12:
OFFICE OF
CHILD SUPPORT
SERVICES**

**OFFICE OF CHILD SUPPORT SERVICES
QUARTERLY PERFORMANCE REPORT
STATE SUMMARY
TITLE IV-D SOURCE COLLECTION REPORT**

Comparison of Quarter-1 (FFY 2024 vs. FFY 2025)

COLLECTION SOURCE	TOTAL 10/1/2023 - 12/31/2023	% OF TOTAL COLLECTIONS	TOTAL 10/1/2024 - 12/31/2024	% OF TOTAL COLLECTIONS	DOLLAR CHANGE	% CHANGE
FEDERAL TAX	\$1,319,460	0.52%	\$1,464,325	0.57%	\$ 144,865	10.98%
STATE TAX	\$928,831	0.36%	\$690,300	0.27%	\$ (238,531)	-25.68%
UIB	\$6,063,771	2.37%	\$6,152,302	2.39%	\$ 88,531	1.46%
INC WITHHOLD	\$182,967,725	71.52%	\$181,797,360	70.50%	\$ (1,170,365)	-0.64%
FROM OTHER STATES	\$10,369,317	4.05%	\$9,749,754	3.78%	\$ (619,563)	-5.97%
ADMIN ENFORCEMENT	\$3,934,137	1.54%	\$4,942,459	0.02%	\$ 1,008,321	25.63%
OTHER	\$50,237,944	19.64%	\$53,082,608	20.58%	\$ 2,844,664	5.66%
TOTAL COLLECTIONS*	\$255,821,185	100%	\$257,879,108	100%	\$ 2,057,922	0.80%
DISBURSED COLLECTIONS**	\$221,862,603		\$220,486,546		\$ (1,376,057)	-0.62%

* Includes collections on both current support and arrears.

** Includes collections on both current support and arrears; also includes money sent to other states.

SOURCE: NJKiDS (Based on Federal Quarterly Report of Collections - OCSE-34A except Disbursed Collections)

Disbursed Collections obtained from Federal Data Report - OCSE-157, which is reported annually to Congress and used in the calculation of incentive dollars earned by each state.

**TABLE 13:
OFFICE OF
CHILD SUPPORT
SERVICES**

**OFFICE OF CHILD SUPPORT SERVICES
STATE SUMMARY
TITLE IV-D PATERNITY ESTABLISHMENT REPORT**

Comparison of February (FFY 2024 vs. FFY 2025)

County	FEBRUARY 2024			FEBRUARY 2025			Increase or Decrease (-) from FFY 2024 to FFY 2025
	Total Children Born Out of Wedlock*	Number of Paternities Established	Percent of Paternities Established	Total Children Born Out of Wedlock*	Number of Paternities Established	Percent of Paternities Established	
Atlantic	4,535	4,527	99.8%	4,056	4,057	100.0%	0.2%
Bergen	2,323	2,278	98.1%	2,131	2,081	97.7%	-0.4%
Burlington	3,446	3,364	97.6%	3,121	3,046	97.6%	0.0%
Camden	11,483	11,221	97.7%	10,653	10,421	97.8%	0.1%
Cape May	814	816	100.2%	730	730	100.0%	-0.2%
Cumberland	5,032	4,979	98.9%	4,631	4,590	99.1%	0.2%
Essex	17,526	16,713	95.4%	15,952	15,272	95.7%	0.4%
Gloucester	3,046	3,032	99.5%	2,777	2,745	98.8%	-0.7%
Hudson	7,093	6,894	97.2%	6,447	6,284	97.5%	0.3%
Hunterdon	145	144	99.3%	118	118	100.0%	0.7%
Mercer	4,651	4,531	97.4%	4,244	4,127	97.2%	-0.2%
Middlesex	4,534	4,401	97.1%	4,105	4,008	97.6%	0.6%
Monmouth	3,182	3,104	97.5%	2,876	2,799	97.3%	-0.2%
Morris	792	783	98.9%	698	694	99.4%	0.6%
Ocean	3,486	3,432	98.5%	3,129	3,075	98.3%	-0.2%
Passaic	6,846	6,708	98.0%	6,131	6,022	98.2%	0.2%
Salem	2,229	2,147	96.3%	2,168	2,085	96.2%	-0.1%
Somerset	898	888	98.9%	759	736	97.0%	-1.9%
Sussex	371	375	101.1%	344	349	101.5%	0.4%
Union	8,089	7,759	95.9%	7,699	7,384	95.9%	0.0%
Warren	507	508	100.2%	417	413	99.0%	-1.2%
NJ TOTALS	91,028	88,604	97.3%	83,186	81,036	97.4%	0.1%

SOURCE: NJKiDS (Based on Federal Performance Measures - OCSE-157)

* Information on Out of Wedlock Births obtained from NJ Bureau of Vital Statistics

**TABLE 14:
OFFICE OF
CHILD SUPPORT
SERVICES**

**OFFICE OF CHILD SUPPORT SERVICES
STATE SUMMARY
TITLE IV-D REPORT OF CASES WITH ORDERS
Comparison of February (FFY 2024 vs. FFY 2025)**

County	FEBRUARY 2024			FEBRUARY 2025			Increase or Decrease (-) from FFY 2024 to FFY 2025
	Total Cases	Cases with Orders	% of Cases with Orders	Total Cases	Cases with Orders	% of Cases with Orders	
Atlantic	9,305	8,472	91.0%	8,704	8,005	92.0%	0.9%
Bergen	9,570	9,256	96.7%	9,312	9,046	97.1%	0.4%
Burlington	10,777	9,690	89.9%	10,411	9,309	89.4%	-0.5%
Camden	22,987	21,449	93.3%	22,259	20,694	93.0%	-0.3%
Cape May	2,295	2,188	95.3%	2,222	2,112	95.0%	-0.3%
Cumberland	9,836	9,246	94.0%	9,310	8,836	94.9%	0.9%
Essex	32,520	28,006	86.1%	31,762	26,878	84.6%	-1.5%
Gloucester	8,182	7,780	95.1%	7,817	7,342	93.9%	-1.2%
Hudson	16,410	14,418	87.9%	15,729	13,960	88.8%	0.9%
Hunterdon	1,040	976	93.8%	996	946	95.0%	1.1%
Mercer	10,564	9,418	89.2%	10,220	9,065	88.7%	-0.5%
Middlesex	14,227	12,996	91.3%	13,736	12,531	91.2%	-0.1%
Monmouth	9,864	9,268	94.0%	9,368	8,694	92.8%	-1.2%
Morris	4,529	4,400	97.2%	4,430	4,263	96.2%	-0.9%
Ocean	11,445	10,912	95.3%	10,863	10,394	95.7%	0.3%
Passaic	15,091	13,455	89.2%	14,357	12,937	90.1%	1.0%
Salem	3,409	3,201	93.9%	3,320	3,091	93.1%	-0.8%
Somerset	3,636	3,238	89.1%	3,374	3,077	91.2%	2.1%
Sussex	2,147	2,112	98.4%	2,101	2,043	97.2%	-1.1%
Union	14,830	14,021	94.5%	14,315	13,595	95.0%	0.4%
Warren	2,030	1,954	96.3%	1,901	1,816	95.5%	-0.7%
NJ TOTALS	214,694	196,456	91.5%	206,507	188,634	91.3%	-0.2%

SOURCE: NJKiDS (Based on Federal Performance Measures - OCSE-157)

**TABLE 15:
OFFICE OF
CHILD SUPPORT
SERVICES**

**OFFICE OF CHILD SUPPORT SERVICES
STATE SUMMARY
TITLE IV-D COLLECTIONS ON CURRENT SUPPORT**
Comparison of February (FFY 2024 vs. FFY 2025)

County	FEBRUARY 2024			FEBRUARY 2025			Increase or Decrease (-) from FFY 2024 to FFY 2025
	Total Current Support Due	Total Current Support Distributed	Total Collection Rate	Total Current Support Due	Total Current Support Distributed	Total Collection Rate	
Atlantic	\$3,190,548	\$2,052,855	64.3%	\$2,987,210	\$1,920,717	64.3%	0.0%
Bergen	\$6,800,630	\$5,024,272	73.9%	\$6,458,472	\$4,757,690	73.7%	-0.2%
Burlington	\$4,663,945	\$3,166,763	67.9%	\$4,382,401	\$3,032,604	69.2%	1.3%
Camden	\$6,743,245	\$3,960,775	58.7%	\$6,303,165	\$3,710,563	58.9%	0.1%
Cape May	\$886,753	\$590,444	66.6%	\$825,171	\$577,845	70.0%	3.4%
Cumberland	\$2,618,163	\$1,505,494	57.5%	\$2,429,490	\$1,413,938	58.2%	0.7%
Essex	\$9,051,257	\$5,276,770	58.3%	\$8,615,851	\$5,149,015	59.8%	1.5%
Gloucester	\$3,384,560	\$2,249,268	66.5%	\$3,090,188	\$2,078,257	67.3%	0.8%
Hudson	\$6,326,314	\$4,003,290	63.3%	\$6,012,480	\$3,821,880	63.6%	0.3%
Hunterdon	\$867,444	\$731,752	84.4%	\$811,064	\$654,602	80.7%	-3.6%
Mercer	\$3,512,202	\$2,191,492	62.4%	\$3,373,451	\$2,132,879	63.2%	0.8%
Middlesex	\$6,445,357	\$4,388,409	68.1%	\$6,070,177	\$4,192,163	69.1%	1.0%
Monmouth	\$5,297,037	\$3,831,518	72.3%	\$4,850,861	\$3,430,699	70.7%	-1.6%
Morris	\$3,519,420	\$2,544,756	72.3%	\$3,296,303	\$2,345,572	71.2%	-1.1%
Ocean	\$5,387,895	\$3,731,809	69.3%	\$5,025,965	\$3,502,566	69.7%	0.4%
Passaic	\$5,466,765	\$3,385,825	61.9%	\$5,271,782	\$3,305,740	62.7%	0.8%
Salem	\$950,184	\$549,477	57.8%	\$881,899	\$527,135	59.8%	1.9%
Somerset	\$2,205,226	\$1,780,738	80.8%	\$2,087,388	\$1,702,456	81.6%	0.8%
Sussex	\$1,375,246	\$1,016,804	73.9%	\$1,295,223	\$989,424	76.4%	2.5%
Union	\$6,094,992	\$3,975,396	65.2%	\$5,835,725	\$3,852,342	66.0%	0.8%
Warren	\$1,020,575	\$776,411	76.1%	\$947,701	\$741,049	78.2%	2.1%
NJ TOTALS	\$85,807,758	\$56,734,318	66.1%	\$80,851,966	\$53,839,134	66.6%	0.5%

SOURCE: NJKiDS (Based on Federal Performance Measures - OCSE-157)

**TABLE 16:
OFFICE OF
CHILD SUPPORT
SERVICES**

**OFFICE OF CHILD SUPPORT SERVICES
STATE SUMMARY
TITLE IV-D CASES ARREARS COLLECTION REPORT**

Comparison of February (FFY 2024 vs. FFY 2025)

County	FEBRUARY 2024			FEBRUARY 2025			Increase or Decrease (-) from FFY 2024 to FFY 2025
	Total Cases with Arrears	Total Amount Collected	Average Arrears Collection per Case	Total Cases with Arrears	Total Amount Collected	Average Arrears Collection per Case	
Atlantic	5,795	\$639,554	\$110.36	5,525	\$558,894	\$101.16	-\$9.21
Bergen	6,227	\$897,609	\$144.15	6,140	\$1,269,204	\$206.71	\$62.56
Burlington	6,492	\$823,306	\$126.82	6,261	\$704,136	\$112.46	-\$14.35
Camden	13,178	\$1,210,228	\$91.84	12,618	\$1,171,510	\$92.84	\$1.01
Cape May	1,532	\$126,662	\$82.68	1,516	\$151,240	\$99.76	\$17.08
Cumberland	5,824	\$464,725	\$79.79	5,615	\$493,307	\$87.86	\$8.06
Essex	17,164	\$1,760,619	\$102.58	16,494	\$2,012,683	\$122.03	\$19.45
Gloucester	5,197	\$526,643	\$101.34	4,914	\$506,710	\$103.12	\$1.78
Hudson	9,993	\$899,163	\$89.98	9,623	\$1,289,307	\$133.98	\$44.00
Hunterdon	615	\$155,211	\$252.38	602	\$84,614	\$140.55	-\$111.82
Mercer	6,491	\$597,522	\$92.05	6,297	\$623,514	\$99.02	\$6.96
Middlesex	8,837	\$1,015,520	\$114.92	8,526	\$1,154,714	\$135.43	\$20.52
Monmouth	6,177	\$793,994	\$128.54	5,743	\$717,131	\$124.87	-\$3.67
Morris	3,035	\$375,269	\$123.65	2,970	\$432,513	\$145.63	\$21.98
Ocean	7,026	\$770,240	\$109.63	6,739	\$860,128	\$127.63	\$18.01
Passaic	9,198	\$978,984	\$106.43	8,920	\$1,153,522	\$129.32	\$22.88
Salem	1,939	\$227,666	\$117.41	1,877	\$147,540	\$78.60	-\$38.81
Somerset	2,176	\$295,336	\$135.72	2,063	\$268,846	\$130.32	-\$5.41
Sussex	1,385	\$172,553	\$124.59	1,302	\$200,035	\$153.64	\$29.05
Union	9,167	\$1,077,567	\$117.55	9,035	\$1,171,026	\$129.61	\$12.06
Warren	1,323	\$117,665	\$88.94	1,244	\$118,483	\$95.24	\$6.31
NJ TOTALS	128,771	\$13,926,036	\$108.15	124,024	\$15,089,057	\$121.66	\$13.52

SOURCE: OCSE-157 Child Support Enforcement Annual Data Report

Table 17**WORK FIRST NEW JERSEY STATISTICAL SUMMARY****WFNJ****FEBRUARY 2025**

COUNTY	EMPLOYMENT DIRECTED ACTIVITIES			EMPLOYED OPEN (WFNJ RECIPIENT)	SUPPORT SERVICES ON ACTIVE CASE		CLOSED FOR EMPLOYMENT THIS MONTH	POST ASSISTANCE CHILD CARE
	CWEP	ALL	JOB SEARCH		CHILD CARE	TRAINING REL. EXPENSES		
		OTHER TRAINING						
ATLANTIC	32	54	2	20	31	99	7	14
BERGEN	38	5	58	7	57	16	4	11
BURLINGTON	106	13	64	26	35	25	2	8
CAMDEN	23	149	8	66	127	2	17	9
CAPE MAY	7	9	4	1	3	8	0	4
CUMBERLAND	0	45	23	16	26	48	4	3
ESSEX	123	261	23	95	154	207	34	67
GLOUCESTER	11	2	4	24	19	22	7	13
HUDSON	21	322	81	130	275	125	50	21
HUNTERDON	0	0	0	0	4	0	0	1
MERCER	85	225	6	39	149	70	17	46
MIDDLESEX	0	48	91	28	77	0	9	0
MONMOUTH	7	11	14	19	34	3	7	23
MORRIS	1	1	3	4	2	0	1	0
OCEAN	0	229	0	8	19	11	2	8
PASSAIC	127	106	0	27	104	73	13	3
SALEM	0	12	4	7	10	6	2	3
SOMERSET	86	22	20	12	55	45	2	1
SUSSEX	0	0	5	1	3	0	0	0
UNION	119	35	0	38	64	30	14	1
WARREN	2	16	1	2	4	0	3	0
STATE TOTAL	788	1565	411	570	1252	790	195	236

Data is derived from NJ Division of Family Development's FAMIS Reports RM064-01 & RM703-51, AdHoc Reports 5549 & 5598 and SDW Report WR00022WZ_CC

**DIVISION OF FAMILY DEVELOPMENT CURRENT PROGRAM STATISTICS
FEBRUARY 2025**

ACRONYMS

EMERGENCY ASSISTANCE (EA) - Payments to those eligible for WFNJ/TANF or WFNJ/GA, authorized during the 30 consecutive days immediately following the emergency (defined as a substantial loss of shelter, food, clothing, or household furnishings by fire, flood or other similar disaster) or if eligible individual or family is in an imminent or actual state of homelessness.

NJ SNAP - Formerly the Food Stamp Program, now known as NJ SNAP (NJ Supplemental Nutrition Assistance Program) authorized by Congress as a nutritional supplement program to provide low income households with more food of greater variety and better nutrition. Program eligibility is based on household income, resources, and expenses for medical, shelter, and dependent care. CWA staff refers certain recipients to the New Jersey Department of Labor for participation in the Food Stamp Employment and Training Program.

FAMIS: Family Assistance Management Information System

GAAS: General Assistance Automated System

NJKiDS: New Jersey Kids Deserve Support (Child Support Information Management System)

NJ MMIS SHARED DATA WAREHOUSE: The Shared Data Warehouse (SDW) is the repository for New Jersey's DFD and Medicaid data. Since 2003, OptumInsight has administered the SDW and provided access to the data through a reporting tool known as Business Objects.

OMEGA: Online Management of Economic Goal Achievement

SSI-EA: Supplemental Security Income-Emergency Assistance

WFNJ: Work First New Jersey - Fully implemented July 1, 1997, this is New Jersey's welfare reform program which responds to the requirements of the Federal Personal Responsibility and Work Opportunity Reconciliation Act (**PRWORA**) of 1996. PRWORA established Temporary Assistance for Needy Families (**TANF**) as the replacement for AFDC cash assistance. WFNJ includes two segments, **WFNJ/TANF** for families with children, and **WFNJ/GA** (General Assistance) for single adults and couples without dependent children. WFNJ emphasizes achieving self-sufficiency and limits lifetime receipt of financial assistance to a total of five years.

**DIVISION OF FAMILY DEVELOPMENT CURRENT PROGRAM STATISTICS
FEBRUARY 2025**

EXPLANATORY NOTES

The Department of Human Services Division of Family Development provides basic income and an opportunity to achieve self-sufficiency for individuals and families served by the Division's programs. The Division provides leadership, direction and supervision to those public agencies responsible for administering those programs and plans for and develops policies to promote self-sufficiency.

WFNJ STATISTICAL SUMMARY (TABLE 17)

Employment Directed Activities (EDA) - From Activities Summary Report (OMEGA report # RM064). Unduplicated count of persons participating in Community Work Experience Program (CWEP), All Other Training, or Job Search.

Number of Persons Employed This Month, Still Receiving TANF - Individuals with open "empl" activity on OMEGA. Ad hoc report.

Participants Receiving Child Care Services - From Issuance Disbursement Summary (OMEGA report # RM703). Total number of active participants who show receipt of Child Care.

Number of Persons Closed on FAMIS Due to Employment - From FAMIS report #5549-RM-2

Post TANF and Receiving Child Care - Persons no longer in receipt of TANF but still receiving child care. From Share Data Warehouse Child Care case count based on Child Care payments (SDW report WR00022WZ_CC).