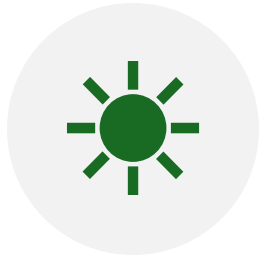


Ring Road Solar & ESS Project



Ring Road Solar & ESS Project

Plympton/Kingston, MA



4,433.00KWDC/2,000.00KW AC
(1P SAT)

13,500 Kwh DC-COUPLED
ENERGY STORAGE SYSTEM



Key Features and Benefits

- **Land Use Efficiency:**
 - Dual Use – Solar and Cranberry Sale Revenues
 - DC Coupled Battery – Additional Solar energy to store!
- **Designed for Farming Access:**
 - Modules installed 10LF high
 - Foundation Locations planned for Equipment Turns
- **Crop Productivity & Water Conservation:**
 - Shade reduces temperature extremes benefiting heat sensitive crops
 - Lesser Irrigation Needs!
- **Smart Program with Agri Adder**
- **Collaboration with UMass**
 - Yield, Compaction & Plant BioMass



Design

- Ground Coverage Ratio
 - Different Pitch/Row-Row for Crop Yields
- Extensive Structural Design due to Organics and 10LF high Modules
- Routing Electrical Infrastructure
 - CAB Posts (minimal trenching!)
 - DC Combiner Locations (for access)
 - Avoiding Irrigation structures/ditches
 - Bog to Bog and then field to field!
- (2) separate AHJs



Pile installation

- Specialized Equipment/predrill
- Routing Path/Matts (min. turns!)
- Refusal Strategy/design
- Protect Wines



Rack/Module Install

- Safety at 10LF high Install
- Low productivity
- Construction Sequence



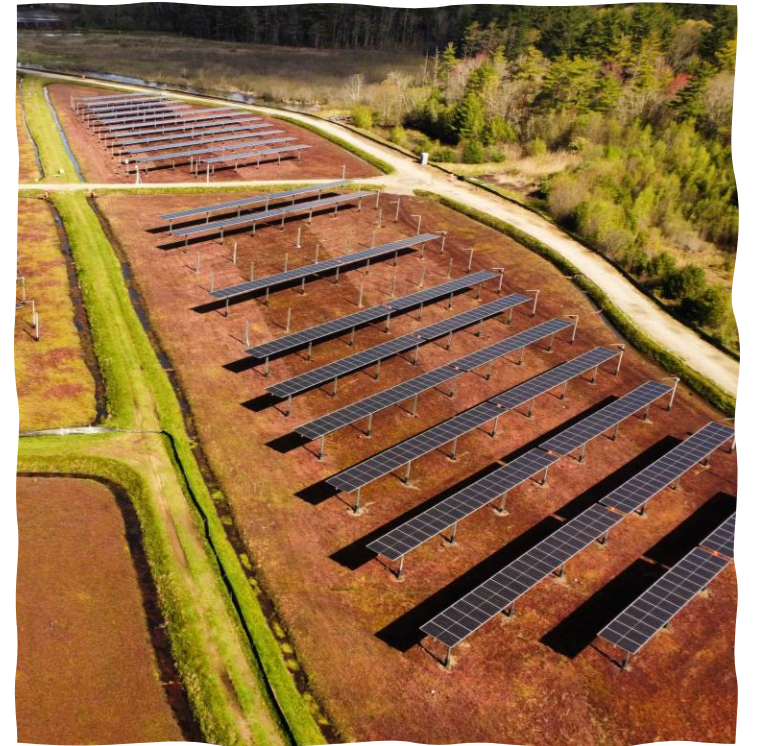
Specialized crew training

- Matting!
 - Types/Color/specifications
 - Duration
- Route Planning
- Material Management
- Debris Management (working with food!)
- Working with a Farmers perspective!



Path forward

An EPC's perspective



- Involve EPC firm as early as possible!
 - Permit Reviews
 - Farming operations and design/construction
 - Constant Stakeholder Communication
 - Sowing/Harvest Seasons & Schedule
 - Farmer Safety!



- More data the better!
 - Gaining insights of subsurface conditions!
 - Soil testing & compaction levels
 - Drain tiles/irrigation systems
 - Fertilizer spraying methods
- Equipment Selection
 - Racking System heavily dictates land usage
 - Type of electrical design
 - Trench V/S CAB
 - Equipment in the field
 - Farmer Safety during operations
- Plant Operations/SOP
 - Develop with Farmer's input!



Thank you!

Prateek Tare
Co-Founder/Executive VP
ptare@distributedei.com

