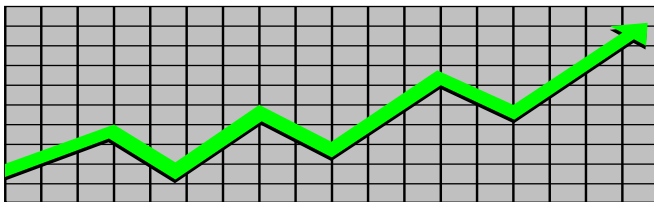


**State of New Jersey**  
**Department of Human Services**  
**Division of Family Development**

---

# **CURRENT PROGRAM STATISTICS**



---

**May 2024**

**Natasha Johnson, Assistant Commissioner**

**TABLE OF CONTENTS**

**HIGHLIGHTS:**

**WFNJ/TANF**..... **ii**  
**NJ SNAP**..... **ii**  
**EMERGENCY ASSISTANCE**..... **ii**  
**GENERAL ASSISTANCE**..... **iii**  
GA Emergency Assistance..... iii  
GA Program..... iii  
**CHILD SUPPORT SERVICES**..... **iii**  
**WORK FIRST NEW JERSEY (WFNJ)**..... **iii**  
**STATISTICS- BY STATE & COUNTY**..... **1**  
Table 1: WFNJ/TANF Families & Persons (NJ Statewide) May 2022 to 2024..... 1  
Table 2: WFNJ/TANF Families (by County)- May 2024..... 2  
Table 2B: WFNJ/TANF Persons, Adults, & Children (by County)- May 2024..... 3  
Table 3: TANF Work Participation Rates Over 12 Month Period (by County)- May 2024..... 4  
Table 4: TANF Work Participation Rates Over 12 Month Period (NJ Statewide)- May 2024..... 5  
Table 5: NJ SNAP Households/Persons (NJ Statewide) May 2022 to 2024..... 6  
Table 6: NJ SNAP Recipient Trends (NJ Statewide) May 2022 to 2024..... 7  
Table 7: NJ SNAP Households/Persons (by County)- May 2024..... 8  
Table 8: Emergency Assistance Program (NJ Statewide) May 2022 to 2024..... 9  
Table 9: Emergency Assistance Program (by County)- May 2024..... 10  
Table 10: General Assistance Program (NJ Statewide) May 2022 to 2024..... 11  
Table 11: General Assistance Program (by County)- May 2024..... 12  
Table 12: Child Support Services Distributions (NJ Statewide) FFY 2024..... 13  
Table 13: Child Support Services Paternities Established- May 2024..... 14  
Table 14: Child Support Services Cases With Orders- May 2024..... 15  
Table 15: Child Support Services Collections On Current Support- May 2024..... 16  
Table 16: Child Support Services Cases With Payments On Arrears- May 2024..... 17  
Table 17: WFNJ Statistical Summary- May 2024..... 18  
**ACRONYMS**..... **19**  
**EXPLANATORY NOTES**..... **20**  
WFNJ Statistical Summary (Table 17)..... 20

**DIVISION OF FAMILY DEVELOPMENT CURRENT PROGRAM STATISTICS**  
**MAY 2024**

---

Each month the Division of Family Development publishes its program statistics for: WFNJ/TANF, NJ SNAP, Emergency Assistance, General Assistance, and Child Support Services. When possible, information is provided separately for children and adults. Many tables also provide trend data with information broken down by county for readers to consider. This report is compiled and prepared by The Bureau of Research & Reporting.

---

**WFNJ/TANF**

- As of the end of May, the TANF caseload had increased by 652 cases, from 11,084 in May 2023 to 11,736 in May 2024; an increase of 5.9%.
- The counties with caseloads that increased the most since May 2023 were Union (18.8%), Morris (15.9%), and Essex (14.3%).
- The counties with caseloads that decreased the most since May 2023 were Hunterdon (-22.4%), Warren (-20.2%), and Sussex (-20%).
- Of the WFNJ/TANF cases, 2,435 or 20.7% were child-only in May 2024.
- The counties with the most child-only cases were Camden (404), Hudson (344), and Essex (265).
- Hudson (5,232), Essex (4,815), and Camden (4,088) counties had the greatest number of persons receiving TANF in May 2024.

**NJ SNAP (Formerly FOOD STAMPS)**

- In May 2024, there were 442,979 households receiving NJ SNAP benefits. The number of NJ SNAP households increased by 34,775 or 8.5%, since May 2023.
- There were 836,436 persons receiving NJ SNAP benefits as of May 2024; an increase of 48,209 or 6.1% since May 2023.
- The counties having the highest SNAP caseload increase since May 2023 were Union (26.4%), Hudson (12.2%), and Morris (11.8%).
- The counties having the highest SNAP caseload decrease since May 2023 was Atlantic (-1.7%).

**EMERGENCY ASSISTANCE**

- There were 1,768 TANF families receiving Emergency Assistance (EA) in May 2024; an increase of 378 or 27.2% since May 2023.
- In May 2024, EA payments were made for 555 SSI recipients.

## **DIVISION OF FAMILY DEVELOPMENT CURRENT PROGRAM STATISTICS MAY 2024**

- There were 2,170 GA cases with Emergency Assistance payments in May 2024; an increase of 269 or 14.2% since May 2023.
- The counties that showed the highest percent increase in Emergency Assistance payments were Cumberland (250%), Passaic (165.9%), and Cape May (56.7%).
- The counties that showed the highest percent decrease in Emergency Assistance payments were Hunterdon (-48.1%), Atlantic (-34.1%), and Union (-24.3%).

### **GENERAL ASSISTANCE**

- The total numbers of cases receiving GA has increased from 10,253 to 15,333 since May 2023; an increase of 49.5%.
- There were 11,197 Employable GA and 4,136 Unemployable GA cases in May 2024.
- The counties that showed a percent increase for GA cases were Passaic (133.7%), Salem (113.3%), and Hudson (97%) since May 2023.
- The counties that showed the highest percent decrease for GA cases since May 2023 were Hunterdon (-11.8%) and Warren (-6.3%).
- In May 2024, GA cases showed a 2.56% increase since April 2024.

### **CHILD SUPPORT SERVICES (QUARTERLY REPORT)**

- The total collection for the Child Support Services Program was about \$264 million from January 2024 to March 2024; a decrease of -3.38% over the same period from FFY 2023.
- Total distributions decreased -3.4% from March 2023.

### **WORK FIRST NEW JERSEY (WFNJ)**

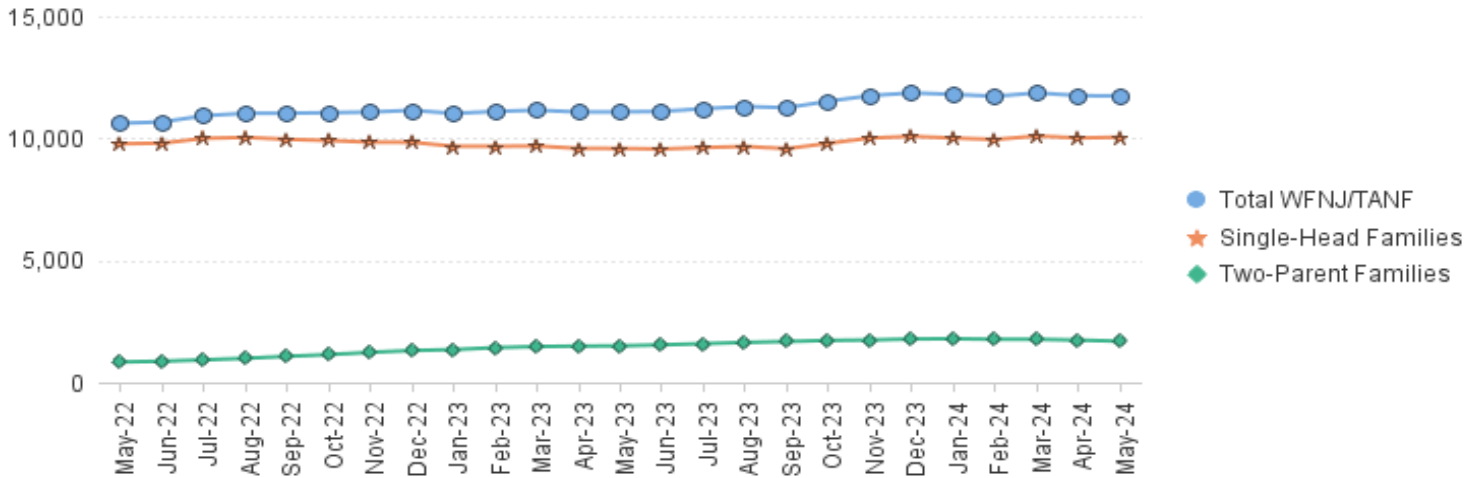
- During the report month of May 2024, there were 559 families in which at least one member was employed and an additional 192 families whose WFNJ assistance cases were closed due to employment - related earnings.
- The three counties with the greatest number of employed active WFNJ recipients were: Essex (116), Hudson (99), and Camden (48).
- There were 246 former TANF cases receiving post-TANF support in the form of child care assistance.

TABLE 1: WFNJ/TANF PROGRAM

STATEWIDE NUMBER OF APPLICATIONS AND TERMINATIONS DURING MAY 2024  
 NUMBER OF ELIGIBLE FAMILIES & PERSONS RECEIVING WFNJ/TANF FOR MAY 2024

		MAY 2022 THROUGH MAY 2024										
		Cases Added	Cases Closed	Child-Only Cases ‡	Total Single-Head Families	2-Parent Families	Total WFNJ/TANF Families	%CHNG (1 Yr.)	Total Persons	%CHNG (1 Yr.)	Adults	Children
2022	MAY	632	475	2,723	9,777	838	10,615	8.7%	28,183	13.4%	8,730	19,453
	JUN	622	599	2,718	9,802	869	10,671	12.4%	28,287	17.1%	8,822	19,465
	JUL	679	518	2,715	9,998	925	10,923	17.2%	29,043	22.1%	9,133	19,910
	AUG	713	609	2,687	10,037	987	11,024	19.9%	29,453	25.6%	9,324	20,129
	SEP	755	808	2,651	9,959	1,070	11,029	22.6%	29,486	28.1%	9,448	20,038
	OCT	753	821	2,626	9,910	1,139	11,049	18.6%	29,606	23.9%	9,562	20,044
	NOV	801	822	2,573	9,843	1,234	11,077	18.4%	29,858	23.0%	9,738	20,120
	DEC	747	792	2,578	9,837	1,308	11,145	15.4%	30,064	19.4%	9,875	20,189
2022	<b>Average</b>	<b>699</b>	<b>623</b>	<b>2,701</b>	<b>9,755</b>	<b>939</b>	<b>10,693</b>		<b>28,466</b>		<b>8,931</b>	<b>19,535</b>
2023	JAN	669	792	2,560	9,674	1,346	11,020	12.0%	29,683	15.1%	9,806	19,877
	FEB	760	717	2,531	9,676	1,426	11,102	9.8%	30,019	12.7%	9,997	20,022
	MAR	822	864	2,565	9,683	1,470	11,153	7.5%	30,069	9.6%	10,058	20,011
	APR	739	858	2,548	9,587	1,490	11,077	5.9%	29,826	7.5%	10,019	19,807
	MAY	825	813	2,523	9,586	1,498	11,084	4.4%	29,863	6.0%	10,059	19,804
	JUN	827	855	2,500	9,562	1,540	11,102	4.0%	29,926	5.8%	10,142	19,784
	JUL	823	764	2,487	9,624	1,590	11,214	2.7%	30,222	4.1%	10,317	19,905
	AUG	887	841	2,445	9,666	1,638	11,304	2.5%	30,533	3.7%	10,497	20,036
	SEP	912	1,097	2,410	9,577	1,677	11,254	2.0%	30,443	3.2%	10,521	19,922
	OCT	944	891	2,463	9,800	1,722	11,522	4.3%	31,139	5.2%	10,781	20,358
	NOV	859	795	2,495	10,011	1,737	11,748	6.1%	31,776	6.4%	10,990	20,786
	DEC	900	836	2,484	10,080	1,781	11,861	6.4%	32,067	6.7%	11,158	20,909
2023	<b>Average</b>	<b>831</b>	<b>844</b>	<b>2,501</b>	<b>9,711</b>	<b>1,576</b>	<b>11,287</b>		<b>30,464</b>		<b>10,362</b>	<b>20,102</b>
2024	JAN	819	879	2,456	10,010	1,790	11,800	7.1%	31,992	7.8%	11,134	20,858
	FEB	743	865	2,451	9,953	1,768	11,721	5.6%	31,775	5.8%	11,038	20,737
	MAR	784	797	2,453	10,095	1,767	11,862	6.4%	32,088	6.7%	11,176	20,912
	APR	832	944	2,414	10,014	1,733	11,747	6.0%	31,674	6.2%	11,066	20,608
	MAY	805	869	2,435	10,047	1,689	11,736	5.9%	31,556	5.7%	10,990	20,566
2024	<b>Average To Date</b>	<b>797</b>	<b>871</b>	<b>2,442</b>	<b>10,024</b>	<b>1,749</b>	<b>11,773</b>		<b>31,817</b>		<b>11,081</b>	<b>20,736</b>

NJ STATEWIDE  
 Eligible Families Receiving WFNJ/TANF  
 MAY 2022 THROUGH MAY 2024

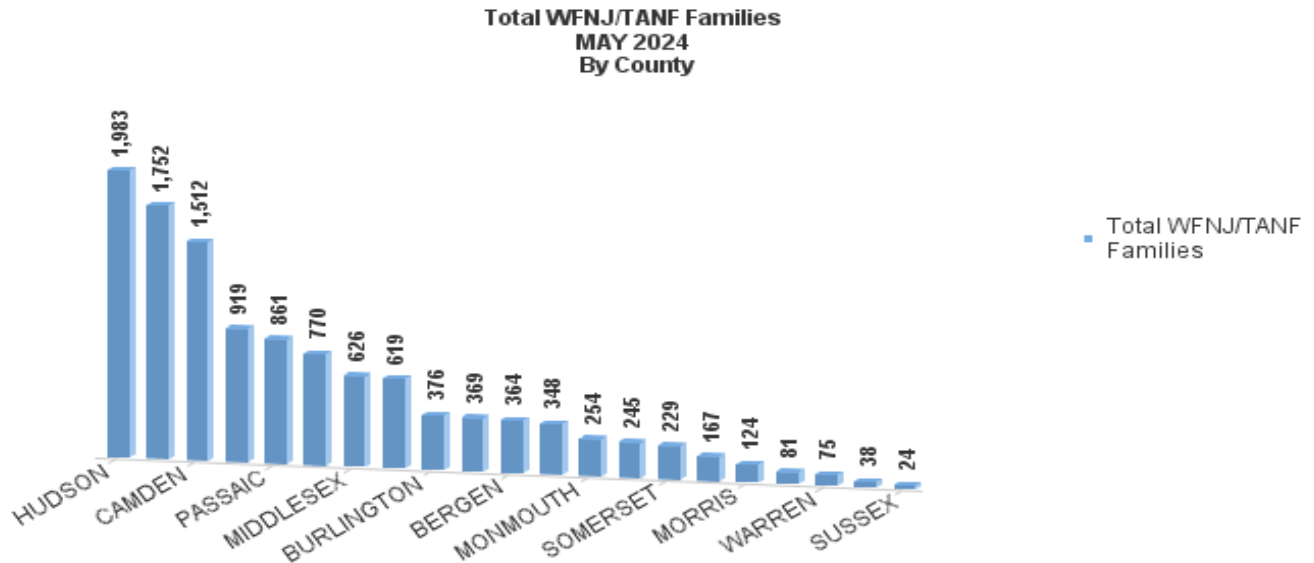


Data is derived from NJ MMIS Shared Data Warehouse Issuance files.  
 Effective July 2013 this data query source was converted to the SDW

‡ Child-only cases are defined as families in which no eligible adult receives TANF program benefits, yet the family continues to be headed by at least one of the biological parents, or grandparents, or other appropriate adult.

**TABLE 2:**  
**WFNJ/TANF NUMBER OF APPLICATIONS AND TERMINATIONS BY COUNTY DURING MAY 2024**  
**PROGRAM NUMBER OF ELIGIBLE FAMILIES RECEIVING WFNJ/TANF FOR MAY 2024**

County	Cases Added	Cases Closed **	Child-	1-Adult	Total	2-Parent	Total	%CHNG (3 Mon)	%CHNG (1 Yr.)
			Only Cases ‡	Cases	Single-Head Families	Families	WFNJ/TANF Families		
ATLANTIC	38	28	170	393	563	56	619	1.3%	-2.1%
BERGEN	21	34	69	248	317	47	364	-6.7%	-12.3%
BURLINGTON	25	27	95	242	337	39	376	-3.1%	4.7%
CAMDEN	61	110	404	961	1,365	147	1,512	-4.8%	-0.1%
CAPE MAY	5	6	26	48	74	7	81	-2.4%	-9.0%
CUMBERLAND	34	28	109	219	328	41	369	-1.1%	12.2%
ESSEX	95	126	265	1,001	1,266	486	1,752	-2.1%	14.3% Δ
GLOUCESTER	23	24	61	166	227	18	245	2.9%	-6.1%
HUDSON	169	140	344	1,387	1,731	252	1,983	1.8%	12.0%
HUNTERDON	0	2	5	26	31	7	38	0.0%	-22.4% *
MERCER	78	59	182	595	777	142	919	2.8%	13.9%
MIDDLESEX	50	46	173	395	568	58	626	1.0%	11.2%
MONMOUTH	21	22	57	175	232	22	254	2.4%	8.5%
MORRIS	9	8	21	85	106	18	124	-1.6%	15.9% Δ
OCEAN	20	24	62	247	309	39	348	2.1%	4.2%
PASSAIC	44	80	179	604	783	78	861	-5.8%	-10.3%
SALEM	24	13	35	113	148	19	167	3.7%	10.6%
SOMERSET	16	20	40	173	213	16	229	-6.1%	11.2%
SUSSEX	3	4	8	13	21	3	24	-11.1%	-20.0% *
UNION	65	63	113	469	582	188	770	0.7%	18.8% Δ
WARREN	4	5	17	52	69	6	75	-1.3%	-20.2% *
<b>NJ Total</b>	<b>805</b>	<b>869</b>	<b>2,435</b>	<b>7,612</b>	<b>10,047</b>	<b>1,689</b>	<b>11,736</b>	<b>-1.1%</b>	<b>5.9%</b>



Data is derived from NJ MMIS Shared Data Warehouse Issuance files.  
 Effective July 2013 this data query source was converted to the SDW

‡ Child-only cases are defined as families in which no eligible adult receives TANF program benefits, yet the family continues to be headed by at least one of the biological parents, or grandparents, or other appropriate adult

\*\* 'Cases closed' include cases that received a benefit in the prior month, but did not receive any TANF benefit for the report month.

Δ=higher caseload % change

\*=lower caseload % change

**TABLE 2B :**  
**WFNJ/TANF**  
**PROGRAM**

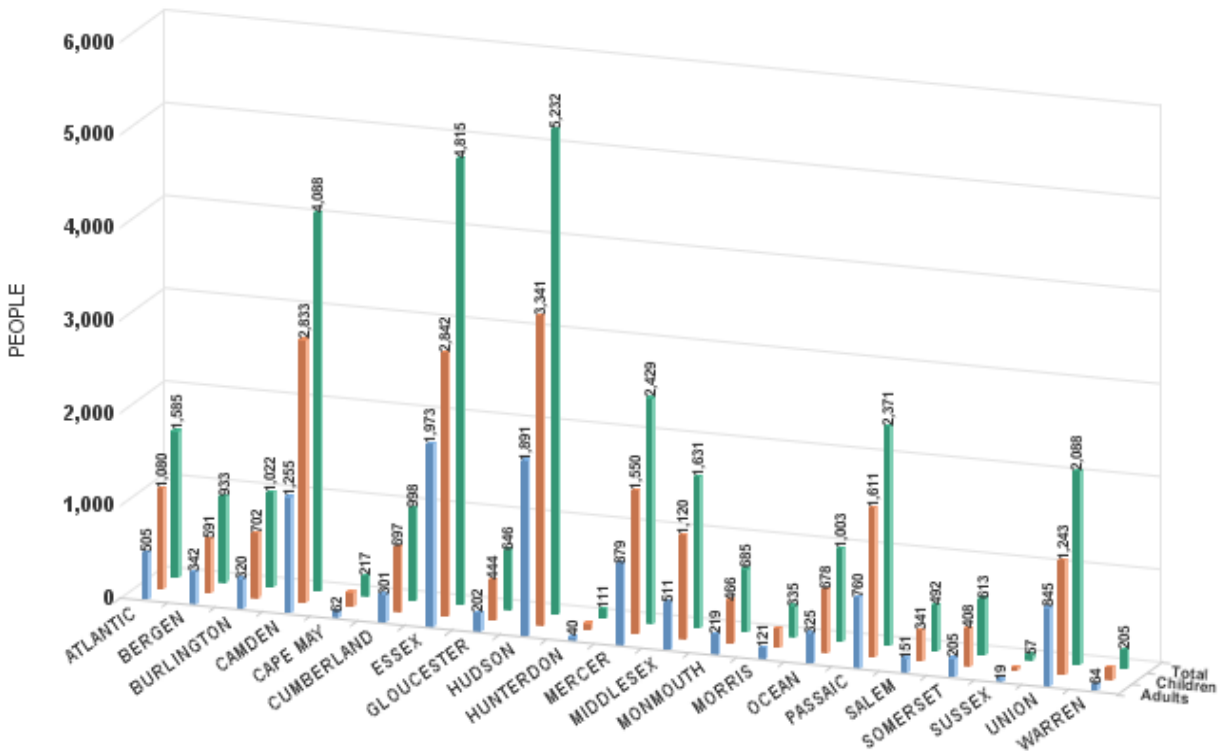
**NUMBER OF PARTICIPATING PERSONS, ADULTS, AND CHILDREN**  
**BY COUNTY FOR MAY 2024**

**PERSONS**

County	Adults	Children	Child/Adult Ratio	Total Persons	% Chng (1 Yr)	Persons Per Case
ATLANTIC	505	1,080	2.14	1,585	-2.1%	2.56
BERGEN	342	591	1.73	933	-16.9% *	2.56
BURLINGTON	320	702	2.19	1,022	6.5%	2.72
CAMDEN	1,255	2,833	2.26	4,088	1.5%	2.70
CAPE MAY	62	155	2.50	217	-11.1%	2.68
CUMBERLAND	301	697	2.32	998	8.0%	2.70
ESSEX	1,973	2,842	1.44	4,815	13.2%	2.75
GLOUCESTER	202	444	2.20	646	-9.5%	2.64
HUDSON	1,891	3,341	1.77	5,232	10.2%	2.64
HUNTERDON	40	71	1.78	111	-14.0%	2.92
MERCER	879	1,550	1.76	2,429	15.3%	2.64
MIDDLESEX	511	1,120	2.19	1,631	10.4%	2.61
MONMOUTH	219	466	2.13	685	11.7%	2.70
MORRIS	121	214	1.77	335	15.9% Δ	2.70
OCEAN	325	678	2.09	1,003	4.5%	2.88
PASSAIC	760	1,611	2.12	2,371	-8.5%	2.75
SALEM	151	341	2.26	492	19.7% Δ	2.95
SOMERSET	205	408	1.99	613	15.0%	2.68
SUSSEX	19	38	2.00	57	-32.9% *	2.38
UNION	845	1,243	1.47	2,088	15.5% Δ	2.71
WARREN	64	141	2.20	205	-16.7% *	2.73
<b>NJ Total</b>	<b>10,990</b>	<b>20,566</b>	<b>1.87</b>	<b>31,556</b>	<b>5.7%</b>	<b>2.69</b>

Δ=higher caseload % change

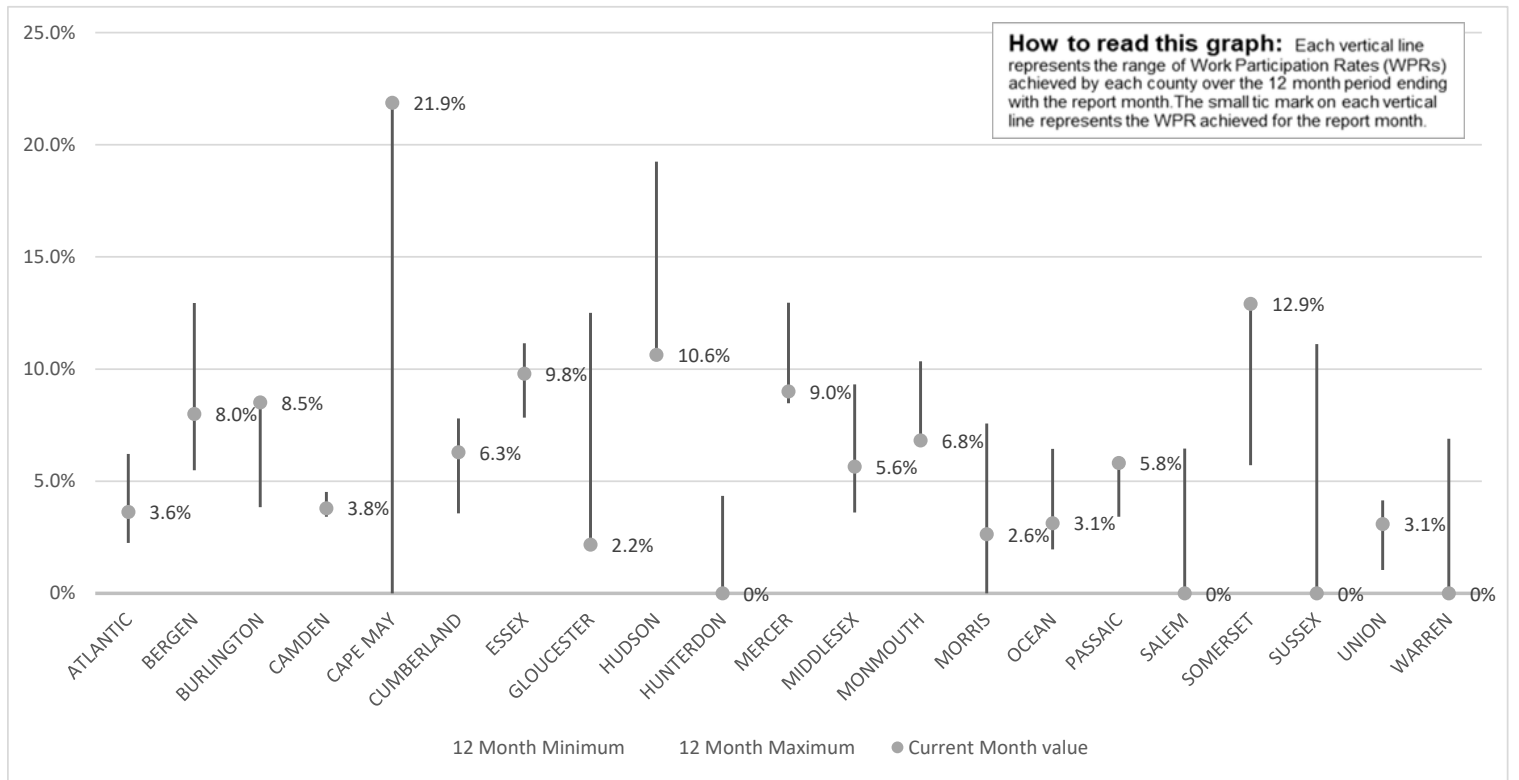
\*=lower caseload % change



Data is derived from NJ MMIS Shared Data Warehouse Issuance files.  
 Effective July 2013 this data query source was converted to the SDW

TABLE 3 :

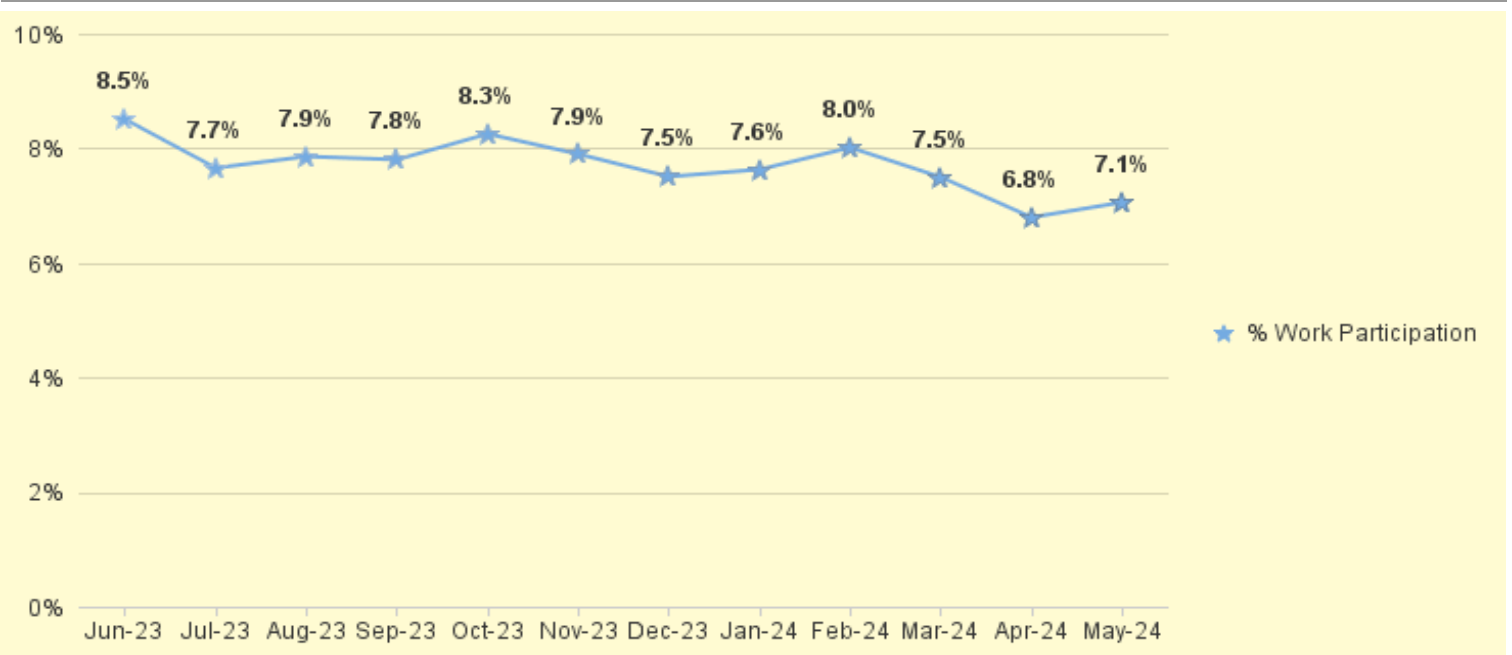
Work Participation Rates Achieved Over 12 Month Period  
Ending with MAY 2024



Data is derived from NJ MMIS Shared Data Warehouse Issuance files.  
Effective July 2013 this data query source was converted to the SDW

TABLE 4 :

WFNJ/TANF Work Participation Rates  
for 12-Month Period Ending with MAY 2024 Statewide



\* The Work Participation rate measures the number of countable Temporary Assistance for Needs Families (TANF) participants based on federal formula. The reported rate is considered to be preliminary until officially calculated by the federal government soon after the close of each federal fiscal year.

**TABLE 5 :**  
**NJ SNAP** NUMBER OF PARTICIPATING HOUSEHOLDS, PERSONS, ADULTS  
**(FOOD STAMPS)** AND CHILDREN FOR MAY 2024 (STATEWIDE)

MAY 2022 THROUGH MAY 2024											
	HOUSEHOLDS					PERSONS					
	WFNJ/ TANF	Other low income	Total	% CHNG (1 YR)		Adults	Children	TOTAL	% CHNG (1 YR)	Age 60+	People with a disability
<b>2022</b>	MAY	10,669	423,672	<b>434,341</b>	-0.9%	474,542	360,324	<b>834,866</b>	-1.8%	154,816	227,400
	JUN	10,650	412,366	<b>423,016</b>	-6.1%	462,757	351,378	<b>814,135</b>	-7.9%	154,107	225,452
	JUL	10,910	400,990	<b>411,900</b>	-7.8%	451,428	343,730	<b>795,158</b>	-8.1%	152,494	222,166
	AUG	12,919	421,433	<b>434,352</b>	-3.8%	475,405	401,190	<b>876,595</b>	0.3%	151,643	224,286
	SEP	11,543	391,350	<b>402,893</b>	-11.9%	440,973	348,303	<b>789,276</b>	-11.1%	150,801	220,166
	OCT	11,175	384,016	<b>395,191</b>	-14.5%	433,352	329,837	<b>763,189</b>	-14.4%	152,434	220,723
	NOV	10,978	386,385	<b>397,363</b>	-14.6%	436,125	332,459	<b>768,584</b>	-14.4%	153,574	221,980
	DEC	11,094	393,042	<b>404,136</b>	-13.7%	443,837	340,993	<b>784,830</b>	-13.1%	155,061	227,586
<b>2022</b>	<b>Average</b>	<b>11,011</b>	<b>418,196</b>	<b>429,207</b>		<b>469,290</b>	<b>362,512</b>	<b>831,802</b>		<b>154,511</b>	<b>227,191</b>
<b>2023</b>	JAN	11,120	388,312	<b>399,432</b>	-14.7%	438,140	336,442	<b>774,582</b>	-14.2%	153,633	223,462
	FEB	10,806	388,213	<b>399,019</b>	-13.7%	437,832	336,772	<b>774,604</b>	-12.9%	154,374	223,539
	MAR	12,027	407,914	<b>419,941</b>	-10.0%	460,274	373,470	<b>833,744</b>	-7.1%	156,031	227,136
	APR	11,987	408,628	<b>420,615</b>	-6.6%	460,514	370,535	<b>831,049</b>	-4.1%	156,584	227,434
	MAY	11,026	397,178	<b>408,204</b>	-6.0%	446,453	341,774	<b>788,227</b>	-5.6%	157,317	225,010
	JUN	11,193	399,666	<b>410,859</b>	-2.9%	449,079	343,009	<b>792,088</b>	-2.7%	157,999	225,250
	JUL	11,874	408,109	<b>419,983</b>	2.0%	458,990	363,129	<b>822,119</b>	3.4%	158,680	226,431
	AUG	11,445	398,827	<b>410,272</b>	-5.5%	448,110	340,718	<b>788,828</b>	-10.0%	158,893	224,313
	SEP	11,607	397,739	<b>409,346</b>	1.6%	446,467	338,291	<b>784,758</b>	-0.6%	160,208	225,665
	OCT	11,862	399,663	<b>411,525</b>	4.1%	448,591	338,651	<b>787,242</b>	3.2%	161,651	226,946
	NOV	11,994	404,810	<b>416,804</b>	4.9%	453,939	342,920	<b>796,859</b>	3.7%	162,683	227,481
	DEC	12,360	413,594	<b>425,954</b>	5.4%	464,039	351,241	<b>815,280</b>	3.9%	164,787	233,859
<b>2023</b>	<b>Average</b>	<b>11,608</b>	<b>401,054</b>	<b>412,663</b>		<b>451,036</b>	<b>348,079</b>	<b>799,115</b>		<b>158,570</b>	<b>226,377</b>
<b>2024</b>	JAN	12,147	413,384	<b>425,531</b>	6.5%	462,636	348,128	<b>810,764</b>	4.7%	164,794	231,669
	FEB	11,859	416,486	<b>428,345</b>	7.3%	465,489	348,007	<b>813,496</b>	5.0%	165,676	231,340
	MAR	12,058	426,988	<b>439,046</b>	4.5%	476,761	357,715	<b>834,476</b>	0.1%	167,855	233,743
	APR	11,717	426,510	<b>438,227</b>	4.2%	474,957	354,424	<b>829,381</b>	-0.2%	168,166	233,544
	MAY	11,715	431,264	<b>442,979</b>	8.5%	479,707	356,729	<b>836,436</b>	6.1%	169,629	234,656
<b>2024</b>	<b>Average To Date</b>	<b>11,899</b>	<b>422,926</b>	<b>434,826</b>		<b>471,910</b>	<b>353,001</b>	<b>824,911</b>		<b>167,224</b>	<b>232,990</b>

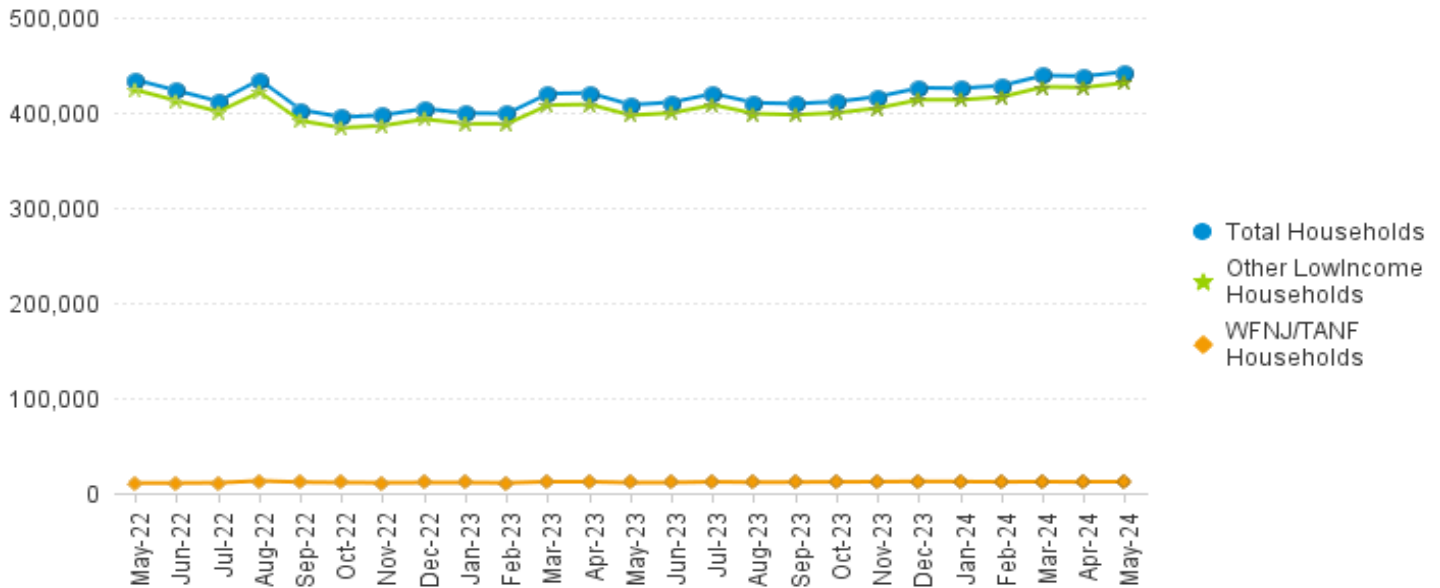
This Table is based on those Households & Persons that received SNAP issuances (benefits) during the month

Data is derived from NJ MMIS Shared Data Warehouse.  
 Effective July 2013 this data query source was converted to the SDW.

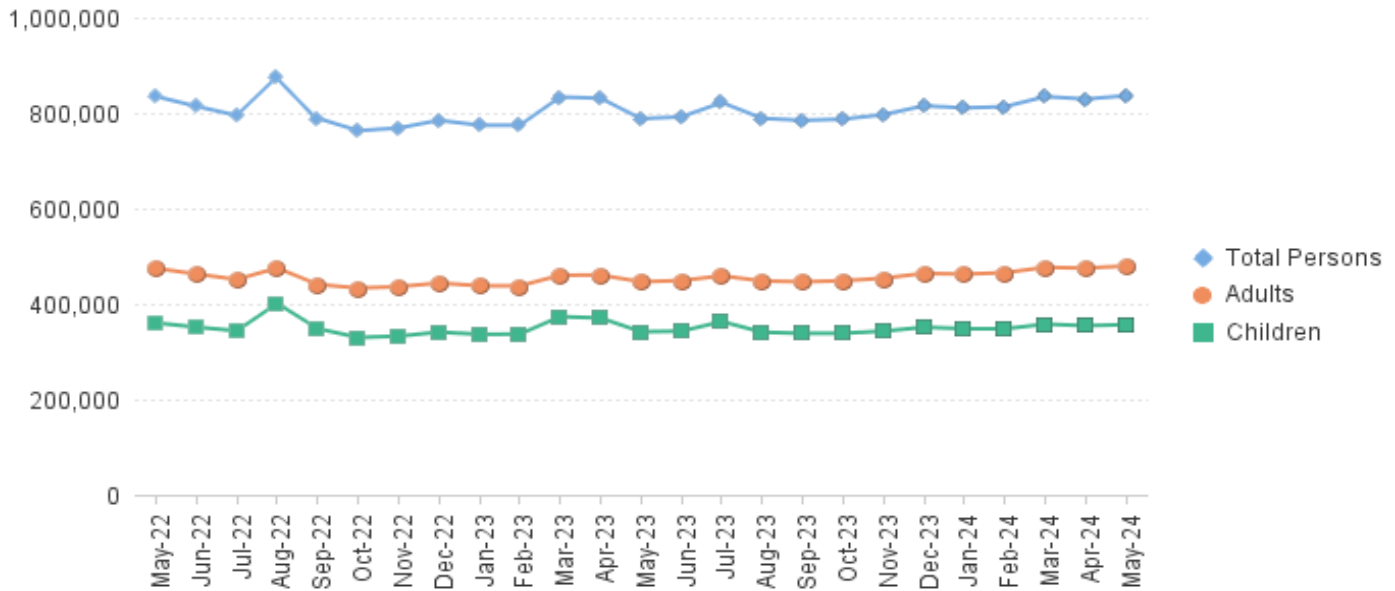
\* Age 60+ and People with a disability columns are independent subsets of total persons. An individual might appear in both columns

**TABLE 6: NJ SNAP (FOOD STAMPS)  
TRENDS FOR PARTICIPATING HOUSEHOLDS & PERSONS  
MAY 2022 THROUGH MAY 2024 (STATEWIDE)**

**Statewide NJ SNAP Households: MAY 2022 Through MAY 2024**



**Statewide NJ SNAP Persons: MAY 2022 Through MAY 2024**



Data is derived from NJ MMIS Shared Data Warehouse Issuance files.  
Effective July 2013 this data query source was converted to the SDW

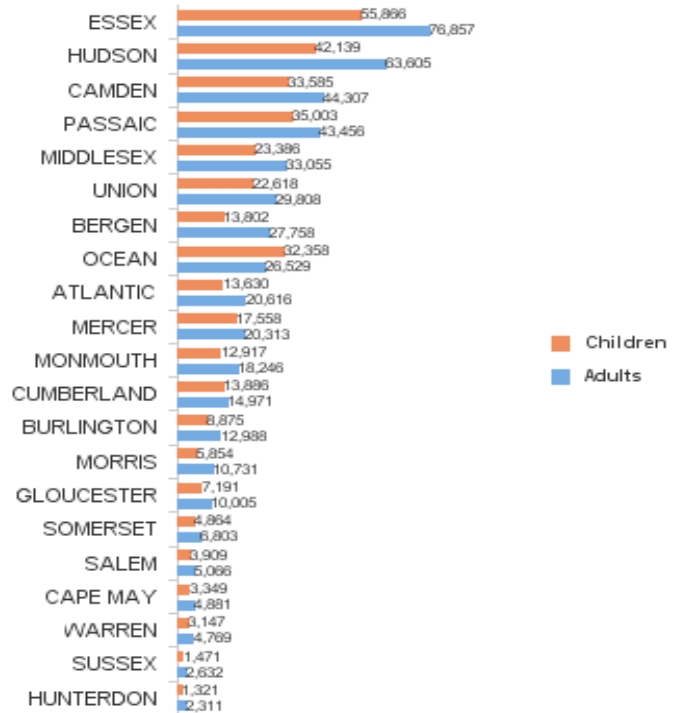
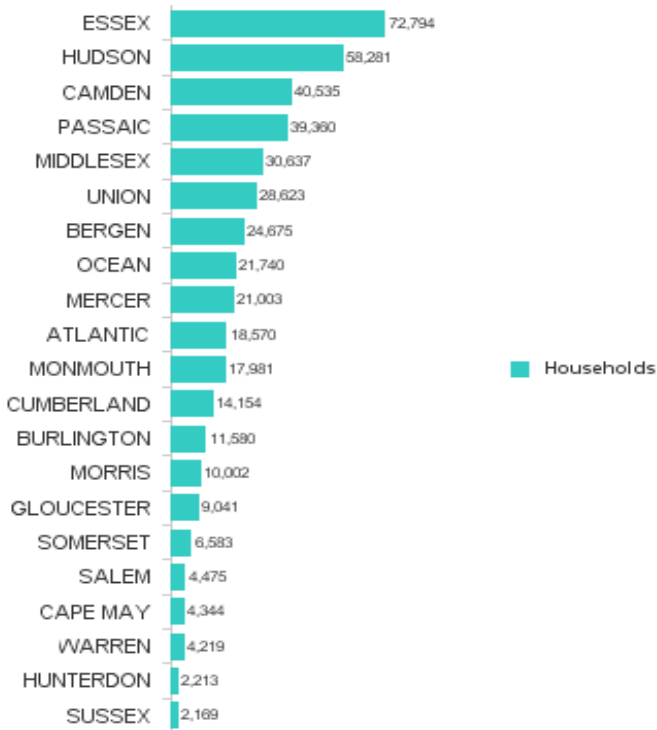
**TABLE 7 :  
NJ SNAP  
NUMBER OF PARTICIPATING HOUSEHOLDS, PERSONS, ADULTS  
AND CHILDREN BY COUNTY FOR MAY 2024**

County	HOUSEHOLDS				PERSONS				Age 60+	People with a disability
	WFNJ/ TANF	Other low income	TOTAL	% Chng (1 Yr)	Adults	Children	TOTAL	% Chng (1 Yr)		
ATLANTIC	596	17,974	18,570	-1.7% *	20,616	13,630	34,246	-4.4% *	6,971	10,273
BERGEN	347	24,328	24,675	6.0%	27,758	13,802	41,560	5.6%	15,363	17,285
BURLINGTON	491	11,089	11,580	7.2%	12,988	8,875	21,863	5.0%	4,072	6,868
CAMDEN	1,446	39,089	40,535	7.7%	44,307	33,585	77,892	6.1%	12,036	20,323
CAPE MAY	69	4,275	4,344	3.3% *	4,881	3,349	8,230	1.1%	1,450	2,328
CUMBERLAND	336	13,818	14,154	6.8%	14,971	13,886	28,857	4.8%	3,917	7,449
ESSEX	1,905	70,889	72,794	8.3%	76,857	55,866	132,723	5.3%	22,278	32,325
GLOUCESTER	235	8,806	9,041	8.8%	10,005	7,191	17,196	7.8%	3,283	6,280
HUDSON	1,975	56,306	58,281	12.2% Δ	63,605	42,139	105,744	9.6% Δ	24,503	29,949
HUNTERDON	43	2,170	2,213	9.0%	2,311	1,321	3,632	7.1%	889	1,257
MERCER	886	20,117	21,003	8.9%	20,313	17,558	37,871	6.5%	6,088	10,760
MIDDLESEX	618	30,019	30,637	6.0%	33,055	23,386	56,441	4.7%	15,105	18,730
MONMOUTH	255	17,726	17,981	9.8%	18,246	12,917	31,163	8.8%	7,527	10,238
MORRIS	149	9,853	10,002	11.8% Δ	10,731	5,854	16,585	10.8% Δ	5,444	5,958
OCEAN	339	21,401	21,740	5.5%	26,529	32,358	58,887	0.5% *	7,678	11,422
PASSAIC	837	38,523	39,360	4.6%	43,456	35,003	78,459	2.2%	16,438	19,856
SALEM	165	4,310	4,475	9.9%	5,066	3,909	8,975	7.9%	1,276	2,410
SOMERSET	212	6,371	6,583	11.0%	6,803	4,864	11,667	9.1%	2,876	3,899
SUSSEX	33	2,136	2,169	1.6% *	2,632	1,471	4,103	-0.7% *	973	1,568
UNION	702	27,921	28,623	26.4% Δ	29,808	22,618	52,426	25.0% Δ	9,933	12,859
WARREN	76	4,143	4,219	3.8%	4,769	3,147	7,916	2.4%	1,529	2,619
<b>NJ TOTAL</b>	<b>11,715</b>	<b>431,264</b>	<b>442,979</b>	<b>8.5%</b>	<b>479,707</b>	<b>356,729</b>	<b>836,436</b>	<b>6.1%</b>	<b>169,629</b>	<b>234,656</b>

Δ=higher caseload % change

\*=lower caseload % change

**Total NJ SNAP Recipients  
MAY 2024 by County**



Data is derived from NJ MMIS Shared Data Warehouse.

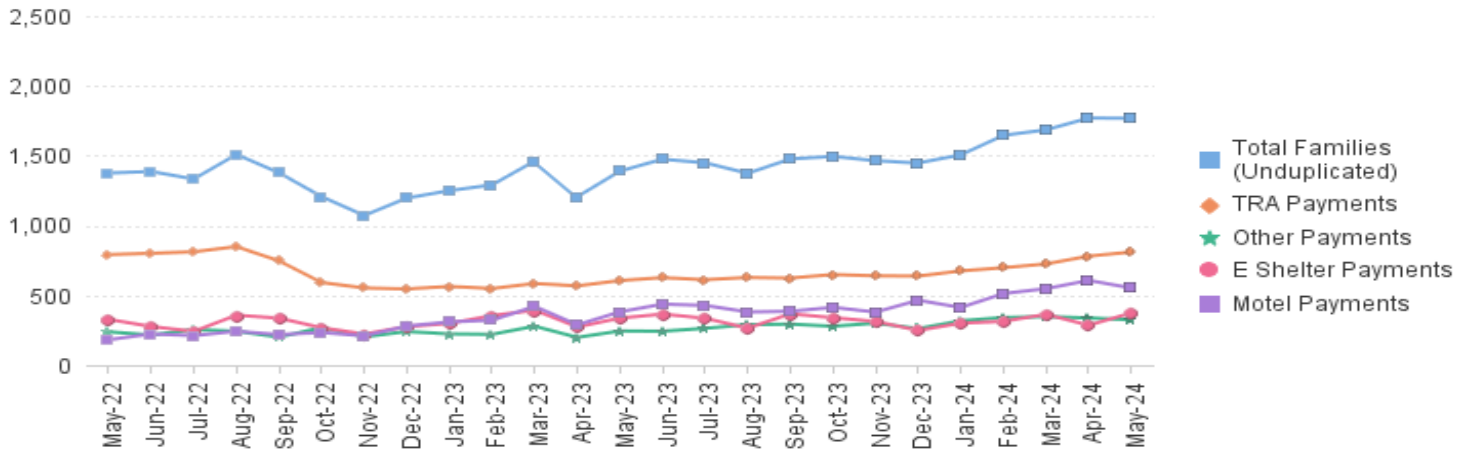
Effective July 2013 this data query source was converted to the SDW.

\* Age 60+ and People with a disability columns are independent subsets of total persons. An individual might appear in both columns

**TABLE 8 : EMERGENCY ASSISTANCE (STATEWIDE) TOTAL NUMBER OF ELIGIBLE FAMILIES RECEIVING EMERGENCY ASSISTANCE PAYMENTS MAY 2022 THROUGH MAY 2024 - STATEWIDE**

		Total WFNJ/EA Families (Undupl)		Temp Rent Asst. Payments (Undupl)		Motel Housing Payments (Undupl)		Shelter/Transitional Housing Payments (Undupl)		Other WFNJ/EA Payments (Undupl)	
			% CHNG (1 YR)		% CHNG (1 YR)		% CHNG (1 YR)		% CHNG (1 YR)		% CHNG (1 YR)
2022	MAY	1,376	1.5%	792	-15.8%	182	7.1%	328	56.9%	239	27.8%
	JUN	1,387	-0.4%	801	-15.1%	224	34.1%	277	13.5%	216	7.5%
	JUL	1,333	0.4%	812	-9.0%	212	30.9%	242	6.1%	255	34.9%
	AUG	1,509	16.2%	849	-6.4%	243	117.0%	358	52.3%	243	41.3%
	SEP	1,378	3.7%	747	-14.7%	219	58.7%	337	17.8%	201	19.6%
	OCT	1,207	-8.1%	592	-29.8%	234	105.3%	268	-0.4%	269	35.2%
	NOV	1,072	-13.8%	553	-34.6%	210	92.7%	223	-1.3%	203	5.2%
	DEC	1,197	-6.3%	546	-33.9%	280	120.5%	276	10.4%	241	50.6%
<b>2022 Average</b>		<b>1,296</b>		<b>723</b>		<b>204</b>		<b>289</b>		<b>230</b>	
2023	JAN	1,250	4.5%	564	-20.1%	310	148.0%	299	4.9%	224	19.8%
	FEB	1,291	6.0%	549	-23.8%	322	113.2%	355	29.6%	221	5.2%
	MAR	1,462	4.7%	585	-24.3%	421	112.6%	394	18.7%	279	3.0%
	APR	1,206	-5.9%	568	-27.8%	289	72.0%	274	3.4%	199	-11.9%
	MAY	1,390	1.0%	606	-23.5%	382	109.9%	337	2.7%	245	2.5%
	JUN	1,475	6.3%	627	-21.7%	437	95.1%	366	32.1%	243	12.5%
	JUL	1,449	8.7%	612	-24.6%	428	101.9%	336	38.8%	264	3.5%
	AUG	1,374	-8.9%	628	-26.0%	381	56.8%	265	-26.0%	290	19.3%
	SEP	1,477	7.2%	624	-16.5%	386	76.3%	368	9.2%	294	46.3%
	OCT	1,495	23.9%	649	9.6%	414	76.9%	340	26.9%	279	3.7%
	NOV	1,464	36.6%	640	15.7%	380	81.0%	313	40.4%	301	48.3%
	DEC	1,448	21.0%	638	16.8%	465	66.1%	249	-9.8%	262	8.7%
<b>2023 Average</b>		<b>1,398</b>		<b>608</b>		<b>385</b>		<b>325</b>		<b>258</b>	
2024	JAN	1,506	20.5%	675	19.7%	413	33.2%	301	0.7%	318	42.0%
	FEB	1,646	27.5%	698	27.1%	513	59.3%	314	-11.5%	341	54.3%
	MAR	1,685	15.3%	725	23.9%	548	30.2%	364	-7.6%	348	24.7%
	APR	1,770	46.8%	781	37.5%	607	110.0%	286	4.4%	338	69.8%
	MAY	1,768	27.2%	810	33.7%	553	44.8%	374	11.0%	325	32.7%
<b>2024 Average To Date</b>		<b>1,675</b>		<b>738</b>		<b>527</b>		<b>328</b>		<b>334</b>	

**NJ STATEWIDE Families Receiving Emergency Assistance MAY 2022 THROUGH MAY 2024**



\* Effective Feb '11 Transitional Housing Payments were removed from 'Other EA Payments' and added to 'Shelter Payments'.

**TABLE 9 : EMERGENCY ASSISTANCE (BY COUNTY) TOTAL NUMBER OF ELIGIBLE FAMILIES RECEIVING EMERGENCY ASSISTANCE PAYMENTS BY COUNTY (UNDUPLICATED CASES) FOR MAY 2024**

County	TOTAL WFNJ/EA Families (Undupl)	% CHNG From MAY 23		Temp Rent Asst. Payments (Undupl)	Motel Housing Payments (Undupl)	Shelter/Transitional Housing Payments (Undupl)	Other WFNJ/EA Payments (Undupl)	SSI Receipts Receiving EA **
ATLANTIC	54	86.2%		41	12	1	9	36
BERGEN	34	-12.8%		18	1	13	7	19
BURLINGTON	189	14.5%		24	128	55	7	7
CAMDEN	80	27.0%		8	42	26	9	25
CAPE MAY	26	-3.7%		9	18	0	1	15
CUMBERLAND	6	0%		0	1	4	1	2
ESSEX	109	-24.3%	*	49	0	54	17	16
GLOUCESTER	15	36.4%		2	1	1	13	10
HUDSON	412	64.8%		225	105	75	86	108
HUNTERDON	8	166.7%	Δ	3	4	0	3	0
MERCER	157	-7.1%		93	14	41	46	94
MIDDLESEX	113	43.0%		44	52	10	30	60
MONMOUTH	62	244.4%	Δ	2	32	33	3	39
MORRIS	25	47.1%		7	15	2	4	18
OCEAN	66	46.7%		24	43	0	4	11
PASSAIC	186	24.0%		157	10	24	30	29
SALEM	3	-57.1%	*	1	0	2	0	1
SOMERSET	90	40.6%		53	24	9	31	38
SUSSEX	3	-50.0%	*	0	2	1	0	0
UNION	115	18.6%		44	43	23	17	17
WARREN	15	114.3%	Δ	6	6	0	7	10
<b>NJ Total</b>	<b>1,768</b>	<b>27.2%</b>		<b>810</b>	<b>553</b>	<b>374</b>	<b>325</b>	<b>555</b>

Δ=higher caseload % change

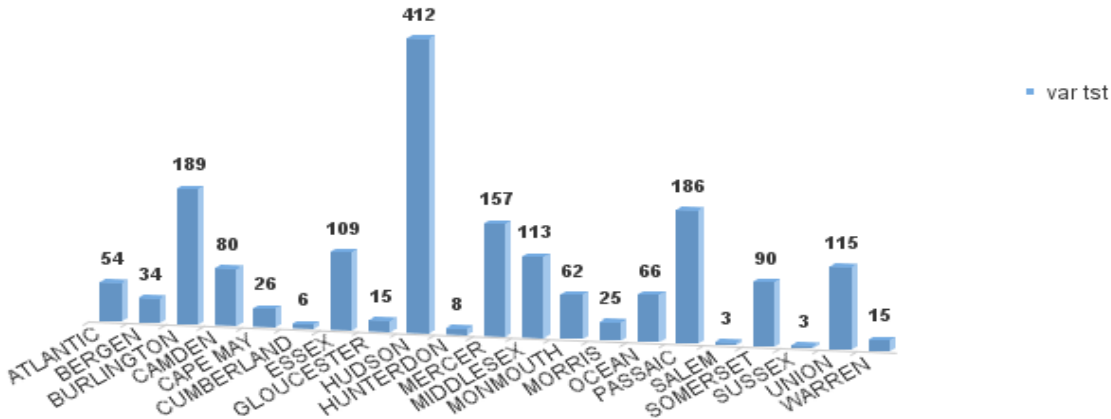
\*=lower caseload % change

\*\* SSI-EA includes pay codes 22 and 24, data is derived from NJ Division of Family Development FAMIS Report #FM430-03A

WFNJ/EA data is derived from NJ MMIS Shared Data Warehouse.

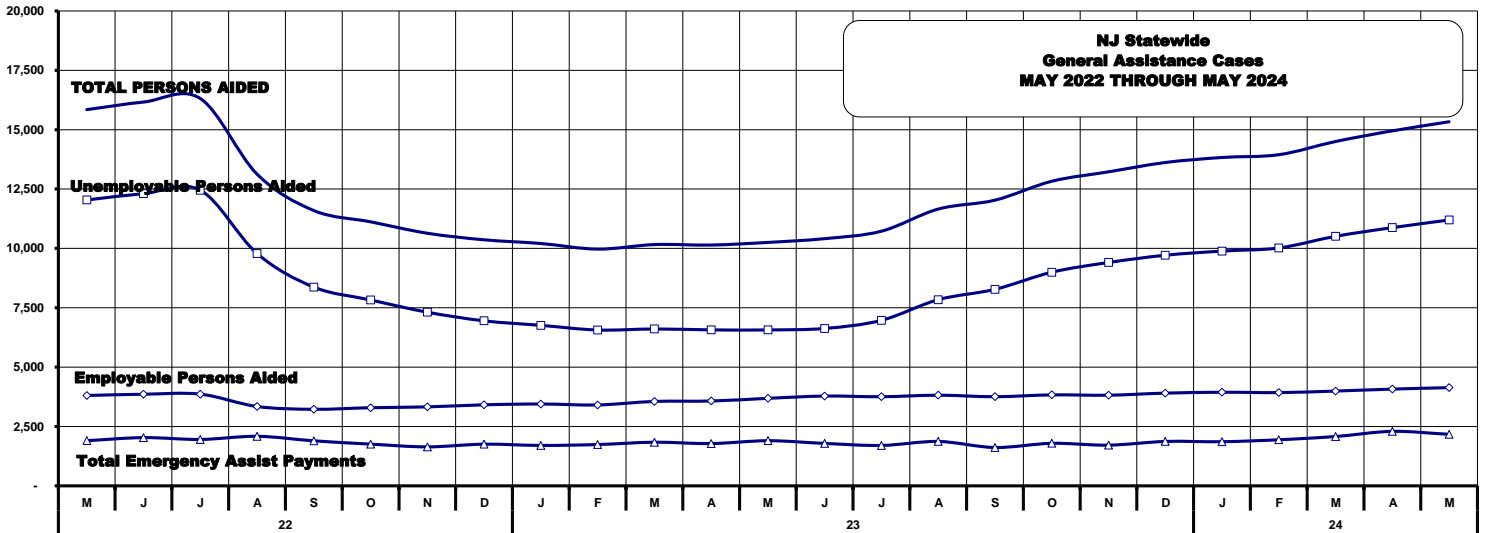
Effective July 2013 this data query source was converted to the SDW.

**Number WFNJ Families Receiving EA by County MAY 2024**



**TABLE 10: GENERAL ASSISTANCE PROGRAM**  
**NUMBER OF EMPLOYABLE AND UNEMPLOYABLE RECIPIENTS AND EMERGENCY ASSISTANCE PAYMENTS - STATEWIDE**  
**MAY 2022 THROUGH MAY 2024**

	Total Cases						Emergency Assistance Cases			
	Employable	% Chng (1 Yr)	Unemployable	% Chng (1 Yr)	Total	% Chng (1 Yr)	Temporary Rental Assistance	Other GA-EA	Total	% Chng (1 Yr)
<b>2022</b>										
MAY	12,039	25.0%	3,805	-13.9%	15,844	12.8%	750	1,152	1,902	45.2%
JUN	12,306	36.6%	3,858	-6.6%	16,164	22.0%	782	1,250	2,032	6.8%
JUL	12,451	37.0%	3,862	-5.3%	16,313	23.9%	758	1,196	1,954	0.0%
AUG	9,785	7.3%	3,342	-16.1%	13,127	0.2%	691	1,396	2,087	13.2%
SEP	8,370	-7.5%	3,225	-17.6%	11,595	-10.5%	635	1,261	1,896	-0.3%
OCT	7,829	-15.9%	3,291	-15.1%	11,120	-15.7%	574	1,184	1,758	-3.3%
NOV	7,313	-24.4%	3,326	-13.7%	10,639	-21.3%	602	1,040	1,642	-4.6%
DEC	6,950	-30.8%	3,413	-11.5%	10,363	-25.4%	599	1,157	1,756	-3.1%
<b>2022 AVERAGE</b>	<b>10,103</b>		<b>3,619</b>		<b>13,722</b>		<b>688</b>	<b>1,192</b>	<b>1,880</b>	
<b>2023</b>										
JAN	6,760	-34.0%	3,447	-9.3%	10,207	-27.3%	590	1,112	1,702	4.8%
FEB	6,563	-38.6%	3,408	-10.6%	9,971	-31.2%	570	1,170	1,740	-6.1%
MAR	6,607	-42.4%	3,555	-8.1%	10,162	-33.7%	586	1,251	1,837	-10.8%
APR	6,569	-44.4%	3,573	-6.5%	10,142	-35.1%	623	1,158	1,781	-8.1%
MAY	6,567	-45.5%	3,686	-3.1%	10,253	-35.3%	634	1,267	1,901	-0.1%
JUN	6,629	-46.1%	3,782	-2.0%	10,411	-35.6%	633	1,155	1,788	-12.0%
JUL	6,971	-44.0%	3,754	-2.8%	10,725	-34.3%	605	1,097	1,702	-12.9%
AUG	7,840	-19.9%	3,817	14.2%	11,657	-11.2%	602	1,268	1,870	-10.4%
SEP	8,277	-1.1%	3,755	16.4%	12,032	3.8%	610	1,005	1,615	-14.8%
OCT	8,997	14.9%	3,831	16.4%	12,828	15.4%	583	1,209	1,792	1.9%
NOV	9,407	28.6%	3,818	14.8%	13,225	24.3%	600	1,114	1,714	4.4%
DEC	9,712	39.7%	3,905	14.4%	13,617	31.4%	598	1,272	1,870	6.5%
<b>2023 AVERAGE</b>	<b>7,575</b>		<b>3,694</b>		<b>11,269</b>		<b>603</b>	<b>1,173</b>	<b>1,776</b>	
<b>2024</b>										
JAN	9,888	46.3%	3,942	14.4%	13,830	35.5%	612	1,247	1,859	9.2%
FEB	10,019	52.7%	3,927	15.2%	13,946	39.9%	513	1,428	1,941	11.6%
MAR	10,510	59.1%	3,993	12.3%	14,503	42.7%	629	1,449	2,078	10.0%
APR	10,875	65.6%	4,075	14.0%	14,950	47.4%	659	1,636	2,295	28.9%
MAY	11,197	70.5%	4,136	12.2%	15,333	49.5%	680	1,490	2,170	14.2%
<b>2023 AVERAGE TO DATE</b>	<b>10,498</b>		<b>4,015</b>		<b>14,512</b>		<b>619</b>	<b>1,450</b>	<b>2,069</b>	



Source: NJ Division of Family Development, GA Fiscal Unit

**TABLE 11: EMPLOYABLE AND UNEMPLOYABLE CASES AND EMERGENCY ASSISTANCE CASES RECEIVING PAYMENTS BY COUNTY MAY 2024**

PROGRAM	Total Cases						Emergency Assistance Cases			
	Employable	% Chng (1 Yr)	Unemployable	% Chng (1 Yr)	Total	% Chng (1 Yr)	Temporary Rental Assistance	Other GA-EA	Total	% Chng (1 Yr)
ATLANTIC	1,088	36.7%	162	2.5%	1,250	31.0%	73	39	112	-34.1% *
BERGEN	340	44.1%	270	-1.5%	610	19.6%	57	28	85	-14.1%
BURLINGTON	443	96.9%	210	39.1%	653	73.7%	11	88	99	7.6%
CAMDEN	1,575	42.9%	518	24.5%	2,093	37.9%	29	83	112	10.9%
CAPE MAY	179	45.5%	55	25.0%	234	40.1%	15	90	105	56.7% Δ
CUMBERLAND	406	95.2%	192	18.5%	598	61.6%	2	19	21	250.0% Δ
ESSEX	1,076	55.5%	297	25.8%	1,373	48.0%	31	155	186	27.4%
GLOUCESTER	243	77.4%	127	4.1%	370	42.9%	4	21	25	31.6%
HUDSON	1,621	123.6%	365	29.0%	1,986	97.0%	144	94	238	54.5%
HUNTERDON	58	-12.1%	47	-11.3%	105	-11.8%	2	12	14	-48.1% *
MERCER	546	45.2%	268	7.2%	814	30.0%	50	95	145	43.6%
MIDDLESEX	413	142.9%	346	2.4%	759	49.4%	42	83	125	-11.3%
MONMOUTH	376	176.5%	227	1.3%	603	67.5%	3	118	121	14.2%
MORRIS	262	59.8%	155	8.4%	417	35.8%	44	57	101	23.2%
OCEAN	398	73.8%	224	0.4%	622	37.6%	17	71	88	14.3%
PASSAIC	699	210.7%	189	21.9%	888	133.7%	56	61	117	165.9% Δ
SALEM	196	269.8%	45	-25.0%	241	113.3%	3	2	5	25.0% Δ
SOMERSET	311	62.8%	92	24.3%	403	52.1%	42	146	188	52.8%
SUSSEX	39	129.4%	33	10.0%	72	53.2%	0	6	6	50.0%
UNION	840	35.5%	254	22.1%	1,094	32.1%	45	189	234	-24.3% *
WARREN	88	15.8%	60	-26.8%	148	-6.3%	10	33	43	48.3%
<b>NJ TOTAL</b>	<b>11,197</b>	<b>70.5%</b>	<b>4,136</b>	<b>12.2%</b>	<b>15,333</b>	<b>49.5%</b>	<b>680</b>	<b>1,490</b>	<b>2,170</b>	<b>14.2%</b>

Δ= ↑ Caseload %

\* = ↓ Caseload %

**TABLE 12:  
OFFICE OF  
CHILD SUPPORT  
SERVICES**

**OFFICE OF CHILD SUPPORT SERVICES  
QUARTERLY PERFORMANCE REPORT  
STATE SUMMARY  
TITLE IV-D SOURCE COLLECTION REPORT  
Comparison of Quarter-2 (FFY 2023 vs. FFY 2024)**

COLLECTION SOURCE	TOTAL 1/1/2023 - 3/31/2023	% OF TOTAL COLLECTIONS	TOTAL 1/1/2024 - 3/31/2024	% OF TOTAL COLLECTIONS	DOLLAR CHANGE	% CHANGE
FEDERAL TAX	\$16,139,052	5.90%	\$12,243,325	4.64%	\$ (3,895,727)	-24.14%
STATE TAX	\$404,499	0.15%	\$409,031	0.15%	\$ 4,532	1.12%
UIB	\$6,864,655	2.51%	\$7,869,464	2.98%	\$ 1,004,809	14.64%
INC WITHHOLD	\$182,187,063	66.65%	\$177,803,064	67.32%	\$ (4,383,999)	-2.41%
FROM OTHER STATES	\$10,105,532	3.70%	\$9,846,134	3.73%	\$ (259,398)	-2.57%
ADMIN ENFORCEMENT	\$4,775,169	1.75%	\$4,829,124	0.02%	\$ 53,954	1.13%
OTHER	\$52,874,824	19.34%	\$51,119,225	19.35%	\$ (1,755,599)	-3.32%
<b>TOTAL COLLECTIONS*</b>	<b>\$273,350,794</b>	<b>100%</b>	<b>\$264,119,367</b>	<b>100%</b>	<b>\$ (9,231,428)</b>	<b>-3.38%</b>
<b>DISBURSED COLLECTIONS**</b>	<b>\$234,232,421</b>		<b>\$226,333,510</b>		<b>\$ (7,898,911)</b>	<b>-3.37%</b>

\* Includes collections on both current support and arrears.

\*\* Includes collections on both current support and arrears; also includes money sent to other states.

SOURCE: NJKiDS (Based on Federal Quarterly Report of Collections - OCSE-34A except Disbursed Collections)

Disbursed Collections obtained from Federal Data Report - OCSE-157, which is reported annually to Congress and used in the calculation of incentive dollars earned by each state.

**TABLE 13:  
OFFICE OF  
CHILD SUPPORT  
SERVICES**

**OFFICE OF CHILD SUPPORT SERVICES  
STATE SUMMARY  
TITLE IV-D PATERNITY ESTABLISHMENT REPORT**  
Comparison of May (FFY 2023 vs. FFY 2024)

County	MAY 2023			MAY 2024			Increase or Decrease (-) from FFY 2023 to FFY 2024
	Total Children Born Out of Wedlock*	Number of Paternities Established	Percent of Paternities Established	Total Children Born Out of Wedlock*	Number of Paternities Established	Percent of Paternities Established	
Atlantic	4,834	4,840	100.1%	4,404	4,407	100.1%	-0.1%
Bergen	2,460	2,432	98.9%	2,264	2,224	98.2%	-0.6%
Burlington	3,659	3,591	98.1%	3,339	3,280	98.2%	0.1%
Camden	12,263	12,085	98.5%	11,253	11,012	97.9%	-0.7%
Cape May	879	882	100.3%	784	785	100.1%	-0.2%
Cumberland	5,332	5,296	99.3%	4,940	4,916	99.5%	0.2%
Essex	18,690	17,823	95.4%	17,054	16,375	96.0%	0.7%
Gloucester	3,264	3,238	99.2%	2,965	2,959	99.8%	0.6%
Hudson	7,554	7,315	96.8%	6,934	6,732	97.1%	0.3%
Hunterdon	157	159	101.3%	132	133	100.8%	-0.5%
Mercer	5,080	4,960	97.6%	4,553	4,436	97.4%	-0.2%
Middlesex	4,852	4,767	98.2%	4,428	4,328	97.7%	-0.5%
Monmouth	3,503	3,416	97.5%	3,109	3,033	97.6%	0.0%
Morris	875	878	100.3%	760	750	98.7%	-1.7%
Ocean	3,762	3,676	97.7%	3,406	3,340	98.1%	0.3%
Passaic	7,499	7,337	97.8%	6,642	6,511	98.0%	0.2%
Salem	2,307	2,227	96.5%	2,211	2,111	95.5%	-1.1%
Somerset	1,002	991	98.9%	854	838	98.1%	-0.8%
Sussex	389	391	100.5%	367	372	101.4%	0.8%
Union	8,447	8,112	96.0%	7,931	7,644	96.4%	0.3%
Warren	566	571	100.9%	474	477	100.6%	-0.3%
<b>NJ TOTALS</b>	<b>97,374</b>	<b>94,987</b>	<b>97.5%</b>	<b>88,804</b>	<b>86,663</b>	<b>97.6%</b>	<b>0.0%</b>

SOURCE: NJKiDS (Based on Federal Performance Measures - OCSE-157)

\* Information on Out of Wedlock Births obtained from NJ Bureau of Vital Statistics

**TABLE 14:  
OFFICE OF  
CHILD SUPPORT  
SERVICES**

**OFFICE OF CHILD SUPPORT SERVICES  
STATE SUMMARY  
TITLE IV-D REPORT OF CASES WITH ORDERS  
Comparison of May (FFY 2023 vs. FFY 2024)**

County	MAY 2023			MAY 2024			Increase or Decrease (-) from FFY 2023 to FFY 2024
	Total Cases	Cases with Orders	% of Cases with Orders	Total Cases	Cases with Orders	% of Cases with Orders	
Atlantic	9,555	8,829	92.4%	9,101	8,345	91.7%	-0.7%
Bergen	9,873	9,575	97.0%	9,493	9,202	96.9%	0.0%
Burlington	10,947	10,014	91.5%	10,615	9,587	90.3%	-1.2%
Camden	23,808	22,283	93.6%	22,718	21,261	93.6%	0.0%
Cape May	2,422	2,296	94.8%	2,269	2,168	95.5%	0.8%
Cumberland	10,166	9,590	94.3%	9,760	9,148	93.7%	-0.6%
Essex	33,293	28,880	86.7%	32,219	27,624	85.7%	-1.0%
Gloucester	8,490	8,106	95.5%	8,047	7,632	94.8%	-0.6%
Hudson	16,701	14,881	89.1%	16,328	14,337	87.8%	-1.3%
Hunterdon	1,092	1,026	94.0%	1,023	970	94.8%	0.9%
Mercer	10,954	9,794	89.4%	10,499	9,364	89.2%	-0.2%
Middlesex	14,651	13,472	92.0%	14,096	12,885	91.4%	-0.5%
Monmouth	10,471	9,832	93.9%	9,738	9,150	94.0%	0.1%
Morris	4,686	4,549	97.1%	4,482	4,355	97.2%	0.1%
Ocean	11,952	11,426	95.6%	11,364	10,829	95.3%	-0.3%
Passaic	15,756	13,814	87.7%	14,786	13,387	90.5%	2.9%
Salem	3,501	3,300	94.3%	3,377	3,169	93.8%	-0.4%
Somerset	3,764	3,414	90.7%	3,512	3,191	90.9%	0.2%
Sussex	2,193	2,147	97.9%	2,144	2,110	98.4%	0.5%
Union	15,452	14,549	94.2%	14,656	13,902	94.9%	0.7%
Warren	2,168	2,035	93.9%	1,996	1,925	96.4%	2.6%
<b>NJ TOTALS</b>	<b>221,895</b>	<b>203,812</b>	<b>91.9%</b>	<b>212,223</b>	<b>194,541</b>	<b>91.7%</b>	<b>-0.2%</b>

SOURCE: NJKiDS (Based on Federal Performance Measures - OCSE-157)

**TABLE 15:  
OFFICE OF  
CHILD SUPPORT  
SERVICES**

**OFFICE OF CHILD SUPPORT SERVICES  
STATE SUMMARY  
TITLE IV-D COLLECTIONS ON CURRENT SUPPORT  
Comparison of May (FFY 2023 vs. FFY 2024)**

County	MAY 2023			MAY 2024			Increase or Decrease (-) from FFY 2023 to FFY 2024
	Total Current Support Due	Total Current Support Distributed	Total Collection Rate	Total Current Support Due	Total Current Support Distributed	Total Collection Rate	
Atlantic	\$3,490,278	\$2,249,432	64.4%	\$3,459,256	\$2,259,477	65.3%	0.9%
Bergen	\$7,431,633	\$5,561,804	74.8%	\$7,245,073	\$5,286,924	73.0%	-1.9%
Burlington	\$5,131,853	\$3,559,134	69.4%	\$5,017,680	\$3,474,414	69.2%	-0.1%
Camden	\$7,338,966	\$4,397,390	59.9%	\$7,318,156	\$4,284,609	58.5%	-1.4%
Cape May	\$945,421	\$652,031	69.0%	\$946,595	\$656,349	69.3%	0.4%
Cumberland	\$2,848,489	\$1,681,480	59.0%	\$2,842,027	\$1,640,801	57.7%	-1.3%
Essex	\$9,866,252	\$5,801,125	58.8%	\$9,785,962	\$5,682,026	58.1%	-0.7%
Gloucester	\$3,716,377	\$2,436,864	65.6%	\$3,684,345	\$2,436,236	66.1%	0.6%
Hudson	\$6,886,396	\$4,587,935	66.6%	\$6,846,016	\$4,266,489	62.3%	-4.3%
Hunterdon	\$945,154	\$799,415	84.6%	\$910,719	\$746,452	82.0%	-2.6%
Mercer	\$3,772,249	\$2,425,688	64.3%	\$3,805,952	\$2,395,295	62.9%	-1.4%
Middlesex	\$7,015,915	\$4,872,149	69.4%	\$6,915,176	\$4,738,631	68.5%	-0.9%
Monmouth	\$5,929,167	\$4,362,602	73.6%	\$5,617,820	\$4,037,516	71.9%	-1.7%
Morris	\$3,857,955	\$2,852,208	73.9%	\$3,733,313	\$2,708,451	72.5%	-1.4%
Ocean	\$5,865,198	\$4,199,895	71.6%	\$5,794,788	\$4,070,014	70.2%	-1.4%
Passaic	\$5,865,377	\$3,700,170	63.1%	\$5,959,913	\$3,726,356	62.5%	-0.6%
Salem	\$1,032,290	\$634,471	61.5%	\$1,052,870	\$614,805	58.4%	-3.1%
Somerset	\$2,444,759	\$1,965,371	80.4%	\$2,356,279	\$1,892,444	80.3%	-0.1%
Sussex	\$1,557,253	\$1,165,768	74.9%	\$1,494,093	\$1,103,112	73.8%	-1.0%
Union	\$6,575,944	\$4,361,669	66.3%	\$6,578,737	\$4,322,503	65.7%	-0.6%
Warren	\$1,115,913	\$845,600	75.8%	\$1,082,297	\$823,155	76.1%	0.3%
<b>NJ TOTALS</b>	<b>\$93,632,839</b>	<b>\$63,112,201</b>	<b>67.4%</b>	<b>\$92,447,066</b>	<b>\$61,166,056</b>	<b>66.2%</b>	<b>-1.2%</b>

SOURCE: NJKiDS (Based on Federal Performance Measures - OCSE-157)

**TABLE 16:  
OFFICE OF  
CHILD SUPPORT  
SERVICES**

**OFFICE OF CHILD SUPPORT SERVICES  
STATE SUMMARY  
TITLE IV-D CASES ARREARS COLLECTION REPORT**

Comparison of May (FFY 2023 vs. FFY 2024)

County	MAY 2023			MAY 2024			Increase or Decrease (-) from FFY 2023 to FFY 2024
	Total Cases with Arrears	Total Amount Collected	Average Arrears Collection per Case	Total Cases with Arrears	Total Amount Collected	Average Arrears Collection per Case	
Atlantic	6,036	\$843,084	\$139.68	5,692	\$804,926	\$141.41	\$1.74
Bergen	6,386	\$1,189,758	\$186.31	6,190	\$1,273,062	\$205.66	\$19.36
Burlington	6,805	\$1,168,171	\$171.66	6,390	\$1,076,999	\$168.54	-\$3.12
Camden	13,778	\$1,901,123	\$137.98	13,121	\$1,819,423	\$138.66	\$0.68
Cape May	1,600	\$211,031	\$131.89	1,497	\$214,139	\$143.05	\$11.15
Cumberland	6,035	\$819,888	\$135.86	5,718	\$792,960	\$138.68	\$2.82
Essex	17,866	\$2,702,652	\$151.27	16,936	\$2,584,899	\$152.63	\$1.35
Gloucester	5,431	\$796,329	\$146.63	5,143	\$726,603	\$141.28	-\$5.35
Hudson	10,283	\$1,407,934	\$136.92	9,810	\$1,582,583	\$161.32	\$24.40
Hunterdon	662	\$146,121	\$220.73	620	\$143,595	\$231.60	\$10.88
Mercer	6,752	\$983,974	\$145.73	6,429	\$973,108	\$151.36	\$5.63
Middlesex	9,067	\$1,381,923	\$152.41	8,712	\$1,665,672	\$191.19	\$38.78
Monmouth	6,408	\$1,082,302	\$168.90	6,057	\$1,119,167	\$184.77	\$15.87
Morris	3,114	\$575,460	\$184.80	2,983	\$639,998	\$214.55	\$29.75
Ocean	7,344	\$1,111,453	\$151.34	7,000	\$1,154,236	\$164.89	\$13.55
Passaic	9,387	\$1,498,428	\$159.63	9,225	\$1,699,236	\$184.20	\$24.57
Salem	2,033	\$210,492	\$103.54	1,900	\$194,789	\$102.52	-\$1.02
Somerset	2,275	\$418,003	\$183.74	2,146	\$515,782	\$240.35	\$56.61
Sussex	1,424	\$275,102	\$193.19	1,340	\$317,870	\$237.22	\$44.03
Union	9,497	\$1,470,459	\$154.83	9,097	\$1,592,225	\$175.03	\$20.19
Warren	1,374	\$219,265	\$159.58	1,302	\$240,236	\$184.51	\$24.93
<b>NJ TOTALS</b>	<b>133,557</b>	<b>\$20,412,952</b>	<b>\$152.84</b>	<b>127,308</b>	<b>\$21,131,508</b>	<b>\$165.99</b>	<b>\$13.15</b>

SOURCE: OCSE-157 Child Support Enforcement Annual Data Report

**Table 17****WORK FIRST NEW JERSEY STATISTICAL SUMMARY****WFNJ****MAY 2024**

COUNTY	EMPLOYMENT DIRECTED ACTIVITIES			EMPLOYED OPEN (WFNJ RECIPIENT)	SUPPORT SERVICES ON ACTIVE CASE		CLOSED FOR EMPLOYMENT THIS MONTH	POST ASSISTANCE CHILD CARE
	CWEP	ALL	JOB SEARCH		CHILD CARE	TRAINING REL. EXPENSES		
		OTHER TRAINING						
<b>ATLANTIC</b>	11	57	0	23	19	48	4	18
<b>BERGEN</b>	32	5	61	10	54	19	8	3
<b>BURLINGTON</b>	142	4	57	35	37	12	2	8
<b>CAMDEN</b>	34	147	10	48	80	2	18	2
<b>CAPE MAY</b>	2	7	2	8	6	2	1	2
<b>CUMBERLAND</b>	0	33	23	11	16	71	8	6
<b>ESSEX</b>	76	162	26	116	93	198	41	65
<b>GLOUCESTER</b>	2	0	8	23	7	12	4	17
<b>HUDSON</b>	9	221	82	99	216	84	29	25
<b>HUNTERDON</b>	0	0	0	0	0	0	0	1
<b>MERCER</b>	100	167	25	35	132	24	19	56
<b>MIDDLESEX</b>	0	39	100	44	65	0	13	1
<b>MONMOUTH</b>	8	26	17	23	19	10	4	25
<b>MORRIS</b>	0	3	2	3	1	0	2	0
<b>OCEAN</b>	0	151	0	3	9	8	4	11
<b>PASSAIC</b>	86	76	0	10	41	31	7	2
<b>SALEM</b>	0	7	0	4	4	6	3	3
<b>SOMERSET</b>	80	28	19	20	33	38	6	0
<b>SUSSEX</b>	0	1	0	2	0	0	2	1
<b>UNION</b>	228	45	0	38	50	56	17	0
<b>WARREN</b>	0	5	0	4	3	0	0	0
<b>STATE TOTAL</b>	<b>810</b>	<b>1184</b>	<b>432</b>	<b>559</b>	<b>885</b>	<b>621</b>	<b>192</b>	<b>246</b>

Data is derived from NJ Division of Family Development's FAMIS Reports RM064-01 &amp; RM703-51, AdHoc Reports 5549 &amp; 5598 and SDW Report WR00022WZ\_CC

**DIVISION OF FAMILY DEVELOPMENT CURRENT PROGRAM STATISTICS  
MAY 2024**

## **ACRONYMS**

**EMERGENCY ASSISTANCE (EA)** - Payments to those eligible for WFNJ/TANF or WFNJ/GA, authorized during the 30 consecutive days immediately following the emergency (defined as a substantial loss of shelter, food, clothing, or household furnishings by fire, flood or other similar disaster) or if eligible individual or family is in an imminent or actual state of homelessness.

**NJ SNAP** - Formerly the Food Stamp Program, now known as NJ SNAP (NJ Supplemental Nutrition Assistance Program) authorized by Congress as a nutritional supplement program to provide low income households with more food of greater variety and better nutrition. Program eligibility is based on household income, resources, and expenses for medical, shelter, and dependent care. CWA staff refers certain recipients to the New Jersey Department of Labor for participation in the Food Stamp Employment and Training Program.

**FAMIS:** Family Assistance Management Information System

**GAAS:** General Assistance Automated System

**NJKiDS:** New Jersey Kids Deserve Support (Child Support Information Management System)

**NJ MMIS SHARED DATA WAREHOUSE:** The Shared Data Warehouse (SDW) is the repository for New Jersey's DFD and Medicaid data. Since 2003, OptumInsight has administered the SDW and provided access to the data through a reporting tool known as Business Objects.

**OMEGA:** Online Management of Economic Goal Achievement

**SSI-EA:** Supplemental Security Income-Emergency Assistance

**WFNJ:** Work First New Jersey - Fully implemented July 1, 1997, this is New Jersey's welfare reform program which responds to the requirements of the Federal Personal Responsibility and Work Opportunity Reconciliation Act (**PRWORA**) of 1996. PRWORA established Temporary Assistance for Needy Families (**TANF**) as the replacement for AFDC cash assistance. WFNJ includes two segments, **WFNJ/TANF** for families with children, and **WFNJ/GA** (General Assistance) for single adults and couples without dependent children. WFNJ emphasizes achieving self-sufficiency and limits lifetime receipt of financial assistance to a total of five years.

**DIVISION OF FAMILY DEVELOPMENT CURRENT PROGRAM STATISTICS  
MAY 2024**

## **EXPLANATORY NOTES**

The Department of Human Services Division of Family Development provides basic income and an opportunity to achieve self-sufficiency for individuals and families served by the Division's programs. The Division provides leadership, direction and supervision to those public agencies responsible for administering those programs and plans for and develops policies to promote self-sufficiency.

### **WFNJ STATISTICAL SUMMARY (TABLE 17)**

**Employment Directed Activities (EDA)** - From Activities Summary Report (OMEGA report # RM064). Unduplicated count of persons participating in Community Work Experience Program (CWEP), All Other Training, or Job Search.

**Number of Persons Employed This Month, Still Receiving TANF** - Individuals with open "empl" activity on OMEGA. Ad hoc report.

**Participants Receiving Child Care Services** - From Issuance Disbursement Summary (OMEGA report # RM703). Total number of active participants who show receipt of Child Care.

**Number of Persons Closed on FAMIS Due to Employment** - From FAMIS report #5549-RM-2

**Post TANF and Receiving Child Care** - Persons no longer in receipt of TANF but still receiving child care. From Share Data Warehouse Child Care case count based on Child Care payments (SDW report WR00022WZ\_CC ).