

# **NEW JERSEY DEPARTMENT OF CORRECTIONS**

George W. Hayman, Commissioner



## **OFFENDER CHARACTERISTICS REPORT**

**ON JANUARY 1, 2009**

Policy Analysis and Planning Unit  
January 2009

## INTRODUCTION

*This report has been developed to provide information regarding offender characteristics in each correctional complex, major institution and satellite housing-unit under the jurisdiction of the New Jersey Department of Corrections on January 1, 2009. The selected characteristics compiled in this report are Base Offense at Admission, Total Term at Admission, Ethnicity, Age, County of Commitment and Mandatory Minimum Term.*

*The Prison Complex includes, New Jersey State Prison, Central Reception and Assignment Facility, East Jersey State Prison, Bayside State Prison, Riverfront State Prison, Midstate, Southern State, Northern State Prison, South Woods, Edna Mahan Correctional Facility for Women and the Adult Diagnostic and Treatment Center (ADTC), a facility for adult male sex offenders.*

*NOTE: In our data tables we provide separate subtotals for ADTC and Edna Mahan Correctional Facility for Women due to the interest in these unique populations. The remainder of the Prison Complex is labeled "Prison Males."*

*The Youth Correctional Complex consists of Garden State Youth Correctional Facility, Albert C. Wagner Youth Correctional Facility and Mountainview Youth Correctional Facility.*

*"Offenders in Other Facilities" include state-sentenced inmates housed in county jails, Halfway Houses, and Central Medical Unit (St. Francis Hospital).*

*"Not Coded" are records for offenders in the correctional system for whom admission characteristics data had not been entered into the computerized information system as of January 1, 2009.*

## **HIGHLIGHTS**

- *Fifty percent (50%) of all New Jersey Department of Corrections residents were committed for crimes against persons which include Homicide, Sexual Assault, Aggravated/Simple Assault, Robbery, Kidnapping, Other Sex Offenses and Other Person Offenses.*
- *Twenty-nine percent (29%) of all Department of Corrections residents have been committed for narcotics law violations, including possession, sale and distribution. Eighty percent (80%) of all narcotics law violations are sale/distribution offenses.*
- *The median total term for Department of Corrections residents is five years.*
- *Thirty-three percent (33%) of all New Jersey Department of Corrections residents were committed with total terms of 10 years or more. Of the total, five percent (5%) are serving Life Sentences with parole eligibility, and 53 offenders are serving Life Sentences without parole.*
- *Sixty-nine percent (69%) of New Jersey Department of Corrections residents housed in the State System have sentences that include mandatory minimum terms.*
- *Forty-one percent (41%) of all residents in the New Jersey Department of Corrections are 30 years of age or younger. The median age for inmates in our adult facilities is 33.*
- *Sixty-one percent (61%) of New Jersey Department of Corrections residents are Black, while 20% are White and 18% are Hispanic.*
- *Of the 21 New Jersey counties, ten (Atlantic, Bergen, Camden, Essex, Hudson, Mercer, Middlesex, Monmouth, Passaic and Union) account for 83% of Total Department of Corrections Residents. Essex County is the highest contributor with 16%.*

## NOTES

### **DUE TO SOFTWARE AND ROUNDING:**

- **WORKSHEET ROW AND COLUMN TOTALS DO NOT ALWAYS EQUAL 100 PERCENT.**
- **PIE CHART PERCENTAGES DO NOT ALWAYS EQUAL 100%.**
- **PIE CHART PERCENTAGES MAY DIFFER SLIGHTLY FROM WORKSHEET PERCENTAGES.**
- **ACCOMPANYING NARRATIVES REFLECT PIE CHART PERCENTAGES.**

**TOTAL RESIDENTS IN NEW JERSEY STATE CORRECTIONAL INSTITUTIONS AND SATELLITES**

<b>TOTAL RESIDENTS</b>		<b>25,436</b>	
<b>PRISON COMPLEX</b>	<b>18,167</b>	<b>YOUTH COMPLEX</b>	<b>4,235</b>
<b>ADTC</b>	<b>678</b>	<b>GARDEN STATE TOTAL</b>	<b>1,833</b>
Bayside – Main	1,305	<b>MOUNTAINVIEW TOTAL</b>	<b>1,158</b>
Bayside – Farm	645	Wagner – Main	856
Bayside – Ancora	343	Wagner – Ad Seg	236
<b>BAYSIDE TOTAL</b>	<b>2,293</b>	Wagner – Minimum Units	152
CRAF – Jones Farm	212	<b>WAGNER TOTAL</b>	<b>1,244</b>
CRAF – Reception	628	<b>OTHER FACILITIES</b>	<b>3,034</b>
<b>CRAF TOTAL</b>	<b>840</b>	Central Medical	13
East Jersey – Main	1,346	County Jail	442
East Jersey – Camp	115	Halfway Houses	2,579
East Jersey – Ad Seg	421		
<b>EAST JERSEY TOTAL</b>	<b>1,882</b>		
<b>EDNA MAHAN TOTAL</b>	<b>929</b>		
<b>MIDSTATE TOTAL</b>	<b>639</b>		
NJ State Prison – Ad Seg Female	27		
NJ State Prison – Main	1,792		
<b>NJ STATE PRISON TOTAL</b>	<b>1,819</b>		
Northern State – Main	2,260		
Northern State – Ad Seg Male	500		
<b>NORTHERN STATE TOTAL</b>	<b>2,760</b>		
<b>RIVERFRONT TOTAL</b>	<b>900</b>		
<b>SOUTHERN STATE TOTAL</b>	<b>2,089</b>		
<b>SOUTH WOODS TOTAL</b>	<b>3,338</b>		

**TABLE OF CONTENTS**

<b>REPORT NAME</b>	<b>PAGE</b>
<i>OFFENDERS IN NEW JERSEY CORRECTIONAL INSTITUTIONS BY BASE OFFENSE</i>	7
<i>Prison Complex Offenders</i>	8-11
<i>Youth Complex Offenders</i>	12
<i>Adult Offenders in Other Facilities</i>	13
<i>OFFENDERS IN NEW JERSEY CORRECTIONAL INSTITUTIONS BY TOTAL TERM AT ADMISSION</i>	14
<i>Prison Complex Offenders</i>	15-18
<i>Youth Complex Offenders</i>	19
<i>Adult Offenders in Other Facilities</i>	20
<i>OFFENDERS IN NEW JERSEY CORRECTIONAL INSTITUTIONS BY MANDATORY MINIMUM TERM</i>	21
<i>Prison Complex Offenders</i>	22-25
<i>Youth Complex Offenders</i>	26
<i>Adult Offenders in Other Facilities</i>	27
<i>OFFENDERS IN NEW JERSEY CORRECTIONAL INSTITUTIONS BY AGE</i>	28
<i>Prison Complex Offenders</i>	29-32
<i>Youth Complex Offenders</i>	33
<i>Adult Offenders in Other Facilities</i>	34
<i>OFFENDERS IN NEW JERSEY CORRECTIONAL INSTITUTIONS BY ETHNIC IDENTIFICATION</i>	35
<i>Prison Complex Offenders</i>	36-39
<i>Youth Complex Offenders</i>	40
<i>Adult Offenders in Other Facilities</i>	41
<i>OFFENDERS IN NEW JERSEY CORRECTIONAL INSTITUTIONS BY COUNTY OF COMMITMENT</i>	42
<i>Prison Complex Offenders</i>	43-46
<i>Youth Complex Offenders</i>	47
<i>Adult Offenders in Other Facilities</i>	48

**OFFENDER CHARACTERISTICS REPORT**

---

***BASE OFFENSE***

**OFFENDERS IN NEW JERSEY CORRECTIONAL INSTITUTIONS  
ON JANUARY 1, 2009, BY BASE OFFENSE**

In these tabulations, the base offense is that which is the most serious offense at the time of admission. These figures reflect base or controlling offenses at admission only, and do not include any offenses in addition to the base offense in the case of multiple sentences at admission. Additional sentences imposed following initial admission to the state correctional system are not included in these data.

- Violent offenses include homicide, sexual assault, aggravated and simple assault, robbery, kidnapping, other sex offenses and other person offenses (i.e. terroristic threats, coercion, larceny from a person, death by auto and negligent manslaughter).
- Property offenses include burglary, arson, theft, forgery, embezzlement, and receiving / possessing stolen property.
- Public policy offenses include racketeering, gambling, corruption, perjury, escape, bail jumping, juvenile and family related offenses, and conspiracy.
- Weapons offenses include weapon possession and operation.
- Drug violations include distribution, manufacture, possession, and use of drugs. Virtually all drug offenses are for sale and distribution rather than for mere possession.

**OFFENDERS IN CORRECTIONAL INSTITUTIONS BY BASE OFFENSE**

Base Offense	Total		Prison Males		Youth Complex		ADTC		Edna Mahan		Other Facilities	
	#	%	#	%	#	%	#	%	#	%	#	%
TOTAL OFFENDERS	25,436	100%	16,560	100%	4,235	100%	678	100%	929	100%	3,034	100%
Violent Offenses	12,602	50%	9,048	55%	1,906	45%	667	98%	442	48%	539	18%
Property Offenses	2,832	11%	1,826	11%	394	9%	0	0%	128	14%	484	16%
Public Policy	1,225	5%	737	4%	237	6%	7	1%	90	10%	154	5%
Weapons	1,199	5%	664	4%	347	8%	1	0%	9	1%	178	6%
Drugs	7,377	29%	4,256	26%	1,351	32%	2	0%	254	27%	1,514	50%
Not Coded	201	1%	29	0%	0	0%	1	0%	6	1%	165	5%

- Inmates with violent offenses comprise 55% of the prison complex, 45% of the youth complex, 98% of ADTC, 48% of Edna Mahan, and 18% of other adult facilities.

You are Viewing an Archived Copy from the New Jersey State Library  
**Prison Complex Offenders By Base Offense**

Institution	Total	Violent Offenses	Homicide	Sexual Assault	Assault	Robbery	Kidnap	Other Sex	Other Person	Property	Public Policy	Weapons	Drugs	Not Coded
<b>Bayside</b>	1,305	498	70	18	140	242	8	16	4	202	92	82	428	3
<b>Main</b>	100%	38%	5%	1%	11%	19%	1%	1%	0%	15%	7%	6%	33%	0%
<b>Bayside</b>	645	250	40	0	80	125	1	2	2	121	30	29	215	0
<b>Farm</b>	100%	39%	6%	0%	12%	19%	0%	0%	0%	19%	5%	4%	33%	0%
<b>Bayside</b>	343	24	0	0	5	19	0	0	0	83	17	27	192	0
<b>Ancora</b>	100%	7%	0%	0%	1%	6%	0%	0%	0%	24%	5%	8%	56%	0%
<b>Bayside Total</b>	2,293	772	110	18	225	386	9	18	6	406	139	138	835	3
	100%	34%	5%	1%	10%	17%	0%	1%	0%	18%	6%	6%	36%	0%
<b>CRAF</b>	212	0	0	0	0	0	0	0	0	66	4	0	142	0
<b>Jones Farm</b>	100%	0%	0%	0%	0%	0%	0%	0%	0%	31%	2%	0%	67%	0%
<b>CRAF</b>	628	177	18	35	47	53	2	22	0	116	46	36	253	0
<b>Reception</b>	100%	28%	3%	6%	7%	8%	0%	4%	0%	18%	7%	6%	40%	0%
<b>CRAF Total</b>	840	177	18	35	47	53	2	22	0	182	50	36	395	0
	100%	21%	2%	4%	6%	6%	0%	3%	0%	22%	6%	4%	47%	0%
<b>East Jersey</b>	1,346	1,174	582	71	80	372	67	2	0	27	24	22	98	1
<b>Main</b>	100%	87%	43%	5%	6%	28%	5%	0%	0%	2%	2%	2%	7%	0%
<b>East Jersey</b>	115	25	0	0	10	15	0	0	0	27	7	2	54	0
<b>Camp</b>	100%	22%	0%	0%	9%	13%	0%	0%	0%	23%	6%	2%	47%	0%
<b>East Jersey</b>	421	255	61	15	49	120	5	4	1	40	21	23	82	0
<b>Ad Seg</b>	100%	61%	14%	4%	12%	29%	1%	1%	0%	10%	5%	5%	19%	0%
<b>East Jersey Total</b>	1,882	1,454	643	86	139	507	72	6	1	94	52	47	234	1
	100%	77%	34%	5%	7%	27%	4%	0%	0%	5%	3%	2%	12%	0%

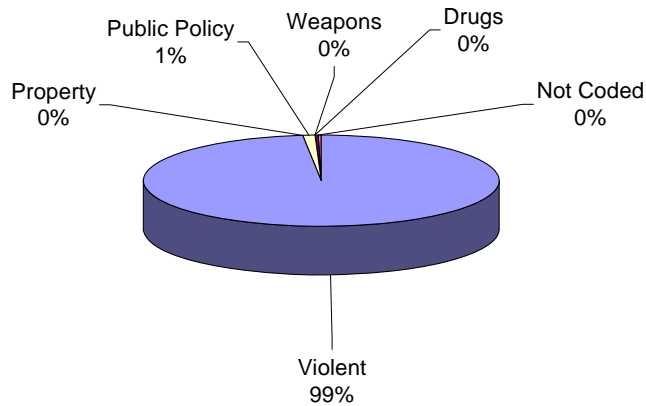
You are Viewing an Archived Copy from the New Jersey State Library  
**Prison Complex Offenders By Base Offense**

Institution	Total	Violent Offenses	Homicide	Sexual Assault	Assault	Robbery	Kidnap	Other Sex	Other Person	Property	Public Policy	Weapons	Drugs	Not Coded
Midstate	639 100%	345 54%	7 1%	110 17%	76 12%	69 11%	2 0%	73 11%	8 1%	90 14%	31 5%	25 4%	148 23%	0 0%
NJ State Prison Ad Seg Female	27 100%	23 85%	1 4%	0 0%	8 30%	12 44%	0 0%	2 7%	0 0%	0 0%	2 7%	1 4%	1 4%	0 0%
NJ State Prison Main	1,792 100%	1,536 86%	982 55%	84 5%	91 5%	304 17%	68 4%	6 0%	1 0%	50 3%	21 1%	29 2%	136 8%	20 1%
NJ State Prison Total	1,819 100%	1,559 86%	983 54%	84 5%	99 5%	316 17%	68 4%	8 0%	1 0%	50 3%	23 1%	30 2%	137 8%	20 1%
Northern Main	2,260 100%	1,355 60%	378 17%	94 4%	250 11%	567 25%	45 2%	19 1%	2 0%	167 7%	100 4%	89 4%	547 24%	2 0%
Northern Ad Seg Male	500 100%	325 65%	79 16%	18 4%	77 15%	142 28%	6 1%	2 0%	1 0%	43 9%	19 4%	20 4%	92 18%	1 0%
Northern Total	2,760 100%	1,680 61%	457 17%	112 4%	327 12%	709 26%	51 2%	21 1%	3 0%	210 8%	119 4%	109 4%	639 23%	3 0%
Riverfront	900 100%	540 60%	85 9%	111 12%	104 12%	214 24%	11 1%	12 1%	3 0%	84 9%	39 4%	43 5%	194 22%	0 0%
Southern	2,089 100%	537 26%	59 3%	14 1%	201 10%	241 12%	6 0%	13 1%	3 0%	368 18%	140 7%	109 5%	934 45%	1 0%
South Woods	3,338 100%	1,984 59%	542 16%	292 9%	300 9%	723 22%	48 1%	69 2%	10 0%	342 10%	144 4%	127 4%	740 22%	1 0%
<b>SUBTOTAL PRISON MALES</b>	<b>16,560 100%</b>	<b>9,048 55%</b>	<b>2,904 18%</b>	<b>862 5%</b>	<b>1,518 9%</b>	<b>3,218 19%</b>	<b>269 2%</b>	<b>242 1%</b>	<b>35 0%</b>	<b>1,826 11%</b>	<b>737 4%</b>	<b>664 4%</b>	<b>4,256 26%</b>	<b>29 0%</b>

### Prison Complex Offenders By Base Offense

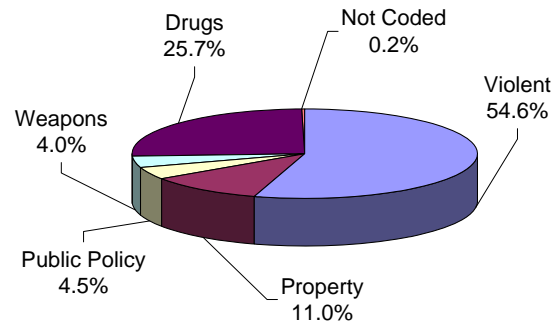
Institution	Total	Violent Offenses	Homicide	Sexual Assault	Assault	Robbery	Kidnap	Other Sex	Other Person	Property	Public Policy	Weapons	Drugs	Not Coded
ADTC	678 100%	667 98%	4 1%	577 85%	7 1%	5 1%	24 4%	43 6%	7 1%	0 0%	7 1%	1 0%	2 0%	1 0%
<b>SUBTOTAL</b>	<b>17,238 100%</b>	<b>9,715 56%</b>	<b>2,908 17%</b>	<b>1,439 8%</b>	<b>1,525 9%</b>	<b>3,223 19%</b>	<b>293 2%</b>	<b>285 2%</b>	<b>42 0%</b>	<b>1,826 11%</b>	<b>744 4%</b>	<b>665 4%</b>	<b>4,258 25%</b>	<b>30 0%</b>
Mahan - Female Prison	929 100%	442 48%	163 18%	7 1%	97 10%	144 16%	7 1%	22 2%	2 0%	128 14%	90 10%	9 1%	254 27%	6 1%
<b>Total Prison Complex</b>	<b>18,167 100%</b>	<b>10,157 56%</b>	<b>3,071 17%</b>	<b>1,446 8%</b>	<b>1,622 9%</b>	<b>3,367 19%</b>	<b>300 2%</b>	<b>307 2%</b>	<b>44 0%</b>	<b>1,954 11%</b>	<b>834 5%</b>	<b>674 4%</b>	<b>4,512 25%</b>	<b>36 0%</b>

**ADTC**



Virtually all offenders at ADTC were committed for violent offenses

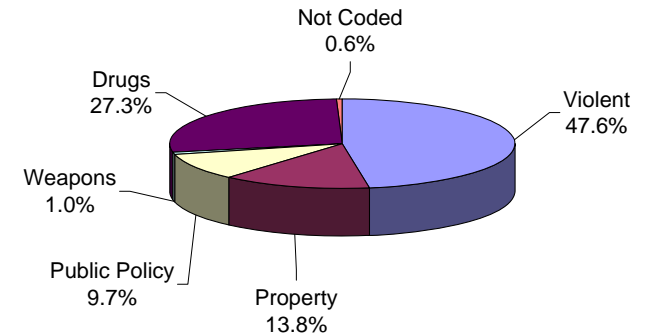
**PRISON MALES**



Fifty-five percent (55%) of male offenders in the prison complex were convicted of a violent offense (ADTC excluded).

Twenty-six percent (26%) of all male prison complex offenders were convicted of drug offenses.

**FEMALE FACILITIES**



Violent offenses were the most frequent commitment-offenses at Edna Mahan (48%).

Twenty-seven percent (27%) of female residents were committed for drug offenses.

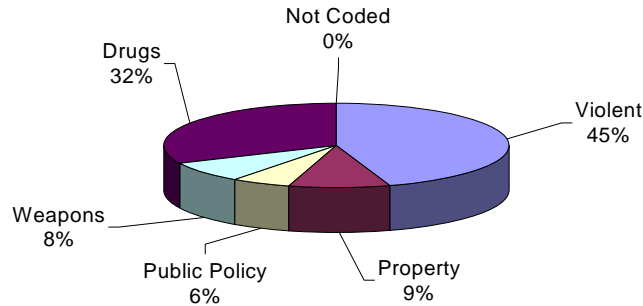
### Youth Complex Offenders By Base Offense

Institution	Total	Violent Offenses	Homicide	Sexual Assault	Assault	Robbery	Kidnap	Other Sex	Other Person	Property	Public Policy	Weapons	Drugs	Not Coded
<b>Garden State</b>	1,833	942	111	104	225	445	7	48	2	147	89	145	510	0
	100%	51%	6%	6%	12%	24%	0%	3%	0%	8%	5%	8%	28%	0%
<b>Mountainview</b>	1,158	338	22	6	130	170	2	6	2	149	81	82	508	0
	100%	29%	2%	1%	11%	15%	0%	1%	0%	13%	7%	7%	44%	0%
<b>Wagner Main</b>	856	430	50	19	127	222	3	9	0	66	44	84	232	0
	100%	50%	6%	2%	15%	26%	0%	1%	0%	8%	5%	10%	27%	0%
<b>Wagner Ad Seg</b>	236	141	17	8	41	72	1	2	0	15	14	18	48	0
	100%	60%	7%	3%	17%	31%	0%	1%	0%	6%	6%	8%	20%	0%
<b>Wagner Minimum Units</b>	152	55	6	0	22	26	1	0	0	17	9	18	53	0
	100%	36%	4%	0%	14%	17%	1%	0%	0%	11%	6%	12%	35%	0%
<b>Wagner Total</b>	1,244	626	73	27	190	320	5	11	0	98	67	120	333	0
	100%	50%	6%	2%	15%	26%	0%	1%	0%	8%	5%	10%	27%	0%
<b>Total Youth</b>	<b>4,235</b>	<b>1,906</b>	<b>206</b>	<b>137</b>	<b>545</b>	<b>935</b>	<b>14</b>	<b>65</b>	<b>4</b>	<b>394</b>	<b>237</b>	<b>347</b>	<b>1,351</b>	<b>0</b>
	<b>100%</b>	<b>45%</b>	<b>5%</b>	<b>3%</b>	<b>13%</b>	<b>22%</b>	<b>0%</b>	<b>2%</b>	<b>0%</b>	<b>9%</b>	<b>6%</b>	<b>8%</b>	<b>32%</b>	<b>0%</b>

### Offenders In Other Facilities By Base Offense

Institution	Total	Violent Offenses	Homicide	Sexual Assault	Assault	Robbery	Kidnap	Other Sex	Other Person	Property	Public Policy	Weapons	Drugs	Not Coded
Central Medical	13	5	1	0	1	2	0	1	0	2	1	0	5	0
	100%	38%	8%	0%	8%	15%	0%	8%	0%	15%	8%	0%	38%	0%
County Jail	442	71	6	10	28	19	1	5	2	65	26	17	105	158
	100%	16%	1%	2%	6%	4%	0%	1%	0%	15%	6%	4%	24%	36%
Halfway House	2,579	463	52	0	168	221	4	16	2	417	127	161	1,404	7
	100%	18%	2%	0%	7%	9%	0%	1%	0%	16%	5%	6%	54%	0%
<b>Total Other Facilities</b>	<b>3,034</b>	<b>539</b>	<b>59</b>	<b>10</b>	<b>197</b>	<b>242</b>	<b>5</b>	<b>22</b>	<b>4</b>	<b>484</b>	<b>154</b>	<b>178</b>	<b>1,514</b>	<b>165</b>
	<b>100%</b>	<b>18%</b>	<b>2%</b>	<b>0%</b>	<b>6%</b>	<b>8%</b>	<b>0%</b>	<b>1%</b>	<b>0%</b>	<b>16%</b>	<b>5%</b>	<b>6%</b>	<b>50%</b>	<b>5%</b>

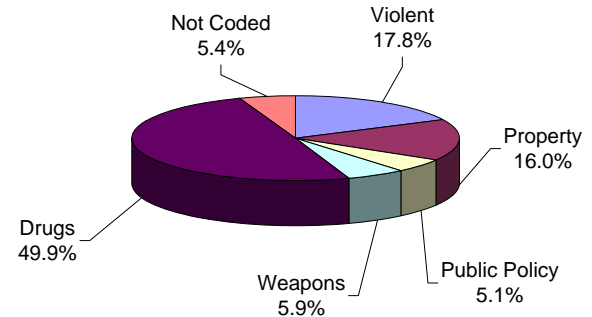
#### YOUTH COMPLEX



Forty-five percent (45%) of offenders housed in the youth complex were incarcerated for violent offenses.

Thirty-two percent (32%) of offenders housed in the youth complex were incarcerated for drug offenses and 9% for property offenses.

#### OFFENDERS IN OTHER FACILITIES



Offenders housed in county jails and halfway houses are less serious offenders than those found in the prison complex facilities (i.e. 18% violent offenses vs. 55% violent offenses in prison complex).

Fifty percent (50%) of offenders housed in 'other facilities' were committed for drug offenses.

***TOTAL MAXIMUM TERM AT ADMISSION***

**OFFENDERS IN NEW JERSEY CORRECTIONAL INSTITUTIONS  
ON JANUARY 1, 2009, BY TOTAL TERM AT ADMISSION**

Total term at admission is the total maximum term imposed for each offender at the time of commitment from the community or from parole. This includes the aggregate term for those admitted with multiple sentences. Additional sentences received following initial admission are not reflected or included in the data.

**OFFENDERS IN NEW JERSEY CORRECTIONAL INSTITUTIONS BY TOTAL TERM AT ADMISSION**

Total Term	Total		Prison Males		Youth Complex		ADTC		Edna Mahan		Other Facilities	
	#	%	#	%	#	%	#	%	#	%	#	%
TOTAL OFFENDERS	25,436	100%	16,560	100%	4,235	100%	678	100%	929	100%	3,034	100%
1-2 Years	969	4%	629	4%	169	4%	4	1%	52	6%	115	4%
3 Years	3,725	15%	1,924	12%	967	23%	14	2%	211	23%	609	20%
4 Years	3,182	13%	1,728	10%	673	16%	28	4%	128	14%	625	21%
5 Years	4,085	16%	2,262	14%	923	22%	59	9%	133	14%	708	23%
6 Years	1,341	5%	765	5%	304	7%	34	5%	43	5%	195	6%
7 Years	1,720	7%	1,053	6%	319	8%	88	13%	47	5%	213	7%
8-9 Years	1,499	6%	997	6%	260	6%	50	7%	47	5%	145	5%
10 Years	1,531	6%	1,057	6%	205	5%	92	14%	54	6%	123	4%
11-14 Years	1,357	5%	1033	6%	158	4%	75	11%	36	4%	55	2%
15 Years	692	3%	534	3%	65	2%	48	7%	25	3%	20	1%
16-20 Years	1,172	5%	959	6%	87	2%	67	10%	36	4%	23	1%
20+ Years	2,413	9%	2,170	13%	29	1%	115	17%	62	7%	37	1%
Life With Parole	1,167	5%	1,139	7%	0	0%	3	0%	22	2%	3	0%
Life Without Parole	53	0%	53	0%	0	0%	0	0%	0	0%	0	0%
Not Coded	530	2%	257	2%	76	2%	1	0%	33	4%	163	5%

Among New Jersey Adult Correctional Offenders:

- The median term for adult offenders is 5 years.
- Forty-eight percent (48%) are serving terms of 1 -5 years.
- Eighteen percent (18%) are serving terms of 6-9 years.
- Thirty-three percent (33%) are serving terms of 10 years or more, which includes 1,167 offenders serving life and 53 life without parole sentences.
- Two percent (2%) were not coded.

**Prison Complex Offenders By Total Term At Admission**

Institution	Total	1-2 Years	3 Years	4 Years	5 Years	6 Years	7 Years	8-9 Years	10 Years	11-14 Years	15 Years	16-20 Years	20+ Years	Life With Parole	Life Without Parole	Not Coded
<b>Bayside Main</b>	1,305 100%	79 6%	209 16%	177 14%	211 16%	74 6%	101 8%	99 8%	99 8%	86 7%	24 2%	33 3%	53 4%	16 1%	0 0%	44 3%
<b>Bayside Farm</b>	645 100%	40 6%	126 20%	103 16%	105 16%	29 4%	38 6%	47 7%	48 7%	45 7%	14 2%	11 2%	18 3%	0 0%	0 0%	21 3%
<b>Bayside Ancora</b>	343 100%	29 8%	78 23%	82 24%	65 19%	19 6%	23 7%	19 6%	11 3%	6 2%	2 1%	0 0%	0 0%	0 0%	0 0%	9 3%
<b>Bayside Total</b>	2,293 100%	148 6%	413 18%	362 16%	381 17%	122 5%	162 7%	165 7%	158 7%	137 6%	40 2%	44 2%	71 3%	16 1%	0 0%	74 3%
<b>CRAF Jones Farm</b>	212 100%	32 15%	79 37%	49 23%	28 13%	4 2%	5 2%	0 0%	1 0%	0 0%	0 0%	0 0%	0 0%	0 0%	0 0%	14 7%
<b>CRAF Reception</b>	628 100%	62 10%	129 21%	109 17%	131 21%	33 5%	40 6%	30 5%	31 5%	12 2%	7 1%	6 1%	7 1%	0 0%	0 0%	31 5%
<b>CRAF Total</b>	840 100%	94 11%	208 25%	158 19%	159 19%	37 4%	45 5%	30 4%	32 4%	12 1%	7 1%	6 1%	7 1%	0 0%	0 0%	45 5%
<b>East Jersey Main</b>	1,346 100%	6 0%	14 1%	19 1%	24 2%	10 1%	24 2%	31 2%	66 5%	136 10%	99 7%	202 15%	480 36%	233 17%	0 0%	2 0%
<b>East Jersey Camp</b>	115 100%	14 12%	36 31%	21 18%	14 12%	3 3%	2 2%	1 1%	2 2%	8 7%	4 3%	4 3%	2 2%	0 0%	0 0%	4 3%
<b>East Jersey Ad Seg</b>	421 100%	12 3%	35 8%	43 10%	57 14%	25 6%	34 8%	33 8%	41 10%	27 6%	16 4%	38 9%	48 11%	8 2%	0 0%	4 1%
<b>East Jersey Total</b>	1,882 100%	32 2%	85 5%	83 4%	95 5%	38 2%	60 3%	65 3%	109 6%	171 9%	119 6%	244 13%	530 28%	241 13%	0 0%	10 1%

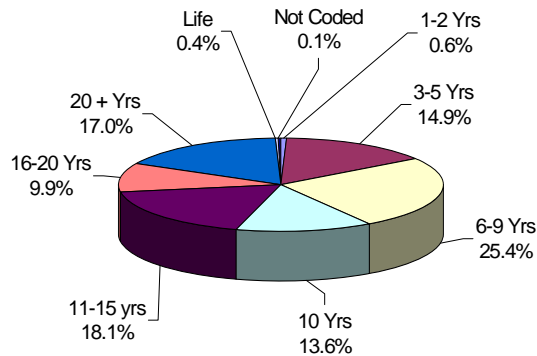
**Prison Complex Offenders By Total Term At Admission**

Institution	Total	1-2 Years	3 Years	4 Years	5 Years	6 Years	7 Years	8-9 Years	10 Years	11-14 Years	15 Years	16-20 Years	20+ Years	Life With Parole	Life Without Parole	Not Coded
Midstate	639 100%	51 8%	136 21%	113 18%	141 22%	51 8%	58 9%	35 5%	18 3%	11 2%	2 0%	2 0%	5 1%	0 0%	0 0%	16 3%
NJ State Prison Ad Seg Female	27 100%	3 11%	5 19%	1 4%	4 15%	3 11%	2 7%	1 4%	4 15%	1 4%	2 7%	1 4%	0 0%	0 0%	0 0%	0 0%
NJ State Prison Main	1,792 100%	12 1%	51 3%	46 3%	68 4%	31 2%	35 2%	29 2%	39 2%	38 2%	30 2%	48 3%	690 39%	604 34%	51 3%	20 1%
NJ State Prison Total	1,819 100%	15 1%	56 3%	47 3%	72 4%	34 2%	37 2%	30 2%	43 2%	39 2%	32 2%	49 3%	690 38%	604 33%	51 3%	20 1%
Northern Main	2,260 100%	46 2%	190 8%	191 8%	278 12%	100 4%	155 7%	169 7%	210 9%	201 9%	91 4%	194 9%	325 14%	95 4%	1 0%	14 1%
Northern Ad Seg Male	500 100%	11 2%	47 9%	35 7%	72 14%	19 4%	48 10%	42 8%	37 7%	50 10%	17 3%	38 8%	61 12%	18 4%	1 0%	4 1%
Northern Total	2,760 100%	57 2%	237 9%	226 8%	350 13%	119 4%	203 7%	211 8%	247 9%	251 9%	108 4%	232 8%	386 14%	113 4%	2 0%	18 1%
Riverfront	900 100%	14 2%	91 10%	76 8%	133 15%	57 6%	81 9%	90 10%	78 9%	88 10%	38 4%	67 7%	74 8%	12 1%	0 0%	1 0%
Southern	2,089 100%	115 6%	362 17%	385 18%	494 24%	142 7%	171 8%	142 7%	112 5%	69 3%	15 1%	19 1%	19 1%	9 0%	0 0%	35 2%
South Woods	3,338 100%	103 3%	336 10%	278 8%	437 13%	165 5%	236 7%	229 7%	260 8%	255 8%	173 5%	296 9%	388 12%	144 4%	0 0%	38 1%
<b>SUBTOTAL PRISON MALES</b>	<b>16,560 100%</b>	<b>629 4%</b>	<b>1,924 12%</b>	<b>1,728 10%</b>	<b>2,262 14%</b>	<b>765 5%</b>	<b>1,053 6%</b>	<b>997 6%</b>	<b>1,057 6%</b>	<b>1,033 6%</b>	<b>534 3%</b>	<b>959 6%</b>	<b>2,170 13%</b>	<b>1,139 7%</b>	<b>53 0%</b>	<b>257 2%</b>

### Prison Complex Offenders By Total Term At Admission

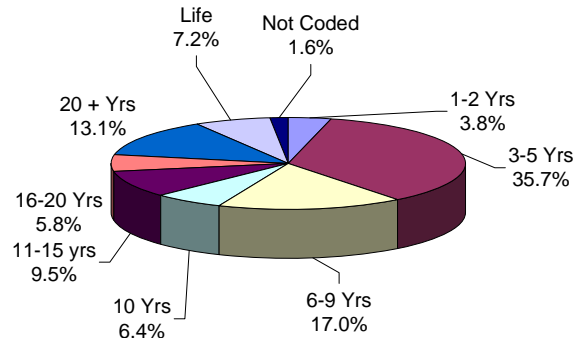
Institution	Total	1-2 Years	3 Years	4 Years	5 Years	6 Years	7 Years	8-9 Years	10 Years	11-14 Years	15 Years	16-20 Years	20+ Years	Life With Parole	Life Without Parole	Not Coded
ADTC	678 100%	4 1%	14 2%	28 4%	59 9%	34 5%	88 13%	50 7%	92 14%	75 11%	48 7%	67 10%	115 17%	3 0%	0 0%	1 0%
<b>SUBTOTAL</b>	<b>17,238 100%</b>	<b>633 4%</b>	<b>1,938 11%</b>	<b>1,756 10%</b>	<b>2,321 13%</b>	<b>799 5%</b>	<b>1,141 7%</b>	<b>1,047 6%</b>	<b>1,149 7%</b>	<b>1,108 6%</b>	<b>582 3%</b>	<b>1,026 6%</b>	<b>2,285 13%</b>	<b>1,142 7%</b>	<b>53 0%</b>	<b>258 1%</b>
Mahan - Female Prison	929 100%	52 6%	211 23%	128 14%	133 14%	43 5%	47 5%	47 5%	54 6%	36 4%	25 3%	36 4%	62 7%	22 2%	0 0%	33 4%
<b>Total Prison Complex</b>	<b>18,167 100%</b>	<b>685 4%</b>	<b>2,149 12%</b>	<b>1,884 10%</b>	<b>2,454 14%</b>	<b>842 5%</b>	<b>1,188 7%</b>	<b>1,094 6%</b>	<b>1,203 7%</b>	<b>1,144 6%</b>	<b>607 3%</b>	<b>1,062 6%</b>	<b>2,347 13%</b>	<b>1,164 6%</b>	<b>53 0%</b>	<b>291 2%</b>

**ADTC**



The median term at ADTC is 10 years.

**PRISON MALES**

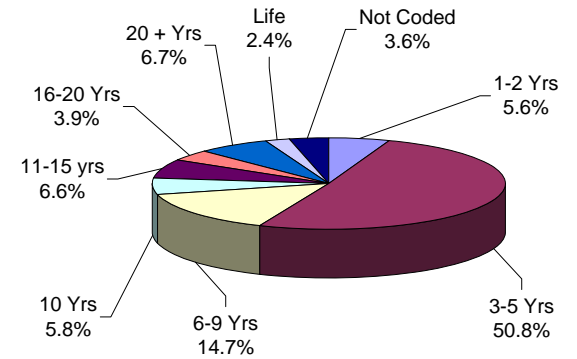


The median term for prison males is 7 years.

Twenty-six percent (26%) of all prison males are serving sentences of 16 years or more.

Seventy-eight percent (78%) of all offenders at New Jersey State Prison are serving sentences of 16 years or more, with 604 life with parole and 51 life without parole.

**FEMALE FACILITIES**



The median term at Edna Mahan is 5 years.

Fifty-six percent (56%) of the female offenders at Edna Mahan Correctional Facility for Women are serving sentences of 5 years or less.

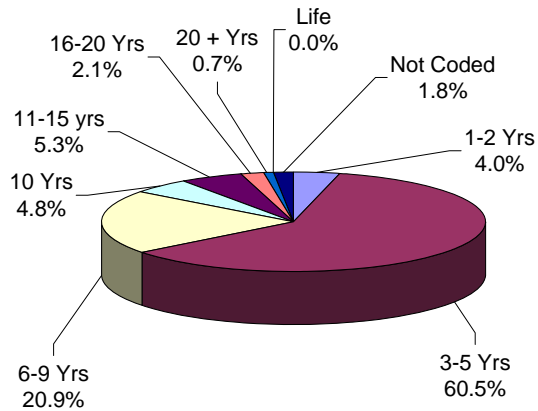
### Youth Complex Offenders By Total Term At Admission

Institution	Total	1-2 Years	3 Years	4 Years	5 Years	6 Years	7 Years	8-9 Years	10 Years	11-14 Years	15 Years	16-20 Years	20+ Years	Life With Parole	Life Without Parole	Not Coded
<b>Garden State</b>	1,833 100%	69 4%	327 18%	278 15%	391 21%	141 8%	158 9%	127 7%	123 7%	78 4%	32 2%	59 3%	25 1%	0 0%	0 0%	25 1%
<b>Mountainview</b>	1,158 100%	46 4%	375 32%	225 19%	283 24%	72 6%	65 6%	51 4%	11 1%	6 1%	1 0%	1 0%	1 0%	0 0%	0 0%	21 2%
<b>Wagner Main</b>	856 100%	41 5%	177 21%	104 12%	178 21%	62 7%	63 7%	57 7%	50 6%	60 7%	19 2%	16 2%	2 0%	0 0%	0 0%	27 3%
<b>Wagner Ad Seg</b>	236 100%	7 3%	48 20%	36 15%	50 21%	17 7%	19 8%	16 7%	11 5%	10 4%	10 4%	9 4%	1 0%	0 0%	0 0%	2 1%
<b>Wagner Minimum Units</b>	152 100%	6 4%	40 26%	30 20%	21 14%	12 8%	14 9%	9 6%	10 7%	4 3%	3 2%	2 1%	0 0%	0 0%	0 0%	1 1%
<b>Wagner Total</b>	1,244 100%	54 4%	265 21%	170 14%	249 20%	91 7%	96 8%	82 7%	71 6%	74 6%	32 3%	27 2%	3 0%	0 0%	0 0%	30 2%
<b>Total Youth</b>	<b>4,235</b> <b>100%</b>	<b>169</b> <b>4%</b>	<b>967</b> <b>23%</b>	<b>673</b> <b>16%</b>	<b>923</b> <b>22%</b>	<b>304</b> <b>7%</b>	<b>319</b> <b>8%</b>	<b>260</b> <b>6%</b>	<b>205</b> <b>5%</b>	<b>158</b> <b>4%</b>	<b>65</b> <b>2%</b>	<b>87</b> <b>2%</b>	<b>29</b> <b>1%</b>	<b>0</b> <b>0%</b>	<b>0</b> <b>0%</b>	<b>76</b> <b>2%</b>

### Offenders In Other Facilities By Total Term At Admission

Institution	Total	1-2 Years	3 Years	4 Years	5 Years	6 Years	7 Years	8-9 Years	10 Years	11-14 Years	15 Years	16-20 Years	20+ Years	Life	Capital	Not Coded
Central Medical	13 100%	1 8%	2 15%	2 15%	2 15%	0 0%	1 8%	2 15%	1 8%	0 0%	1 8%	0 0%	1 8%	0 0%	0 0%	0 0%
County Jail	442 100%	38 9%	83 19%	55 12%	68 15%	12 3%	12 3%	14 3%	4 1%	1 0%	2 0%	2 0%	4 1%	2 0%	0 0%	145 33%
Halfway House	2,579 100%	76 3%	524 20%	568 22%	638 25%	183 7%	200 8%	129 5%	118 5%	54 2%	17 1%	21 1%	32 1%	1 0%	0 0%	18 1%
<b>Total Other Facilities</b>	<b>3,034 100%</b>	<b>115 4%</b>	<b>609 20%</b>	<b>625 21%</b>	<b>708 23%</b>	<b>195 6%</b>	<b>213 7%</b>	<b>145 5%</b>	<b>123 4%</b>	<b>55 2%</b>	<b>20 1%</b>	<b>23 1%</b>	<b>37 1%</b>	<b>3 0%</b>	<b>0 0%</b>	<b>163 5%</b>

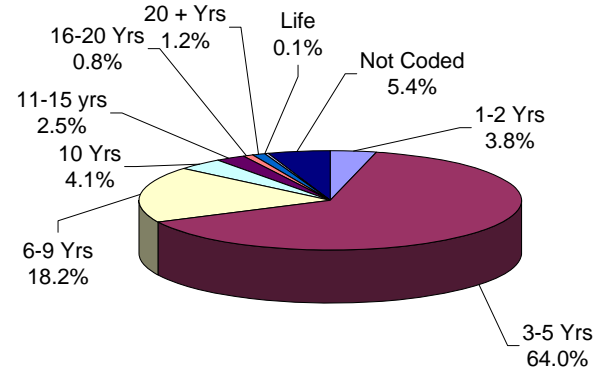
#### YOUTH COMPLEX



The median youth complex term is 5 years.

No youth complex offenders are currently serving life sentences.

#### OFFENDERS IN OTHER FACILITIES



The median term for offenders housed in 'other facilities' is 5 years.

Sixty-eight percent (68%) of offenders housed in 'other facilities' are serving terms of 5 years or less.

**OFFENDER CHARACTERISTICS REPORT**

---

***MANDATORY MINIMUM TERM***

**OFFENDERS IN NEW JERSEY CORRECTIONAL INSTITUTIONS  
ON JANUARY 1, 2009, BY MANDATORY MINIMUM TERM**

In New Jersey, since 1979, the courts have utilized mandatory minimum sentences. This means that an offender must serve the entire minimum sentence before being eligible for parole consideration. Mandatory minimum terms are not reduced by earned credits (commutation, minimum security or work).

**OFFENDERS IN CORRECTIONAL INSTITUTIONS BY MANDATORY MINIMUM TERM**

Mandatory Minimum Term	Total		Prison Males		Youth Complex		ADTC		Edna Mahan		Other Facilities	
	#	%	#	%	#	%	#	%	#	%	#	%
TOTAL OFFENDERS	17,585	100%	11,892	100%	2,841	100%	508	100%	523	100%	1,821	100%
<18 Months	873	5%	409	3%	244	9%	0	0%	22	4%	198	11%
18 Months	813	5%	412	3%	219	8%	3	1%	14	3%	165	9%
2 Years	1,297	7%	720	6%	243	9%	2	0%	27	5%	305	17%
3 Years	2,570	15%	1,366	11%	555	20%	9	2%	63	12%	577	32%
4 Years	1,145	7%	696	6%	217	8%	12	2%	42	8%	178	10%
5 Years	1,953	11%	1,173	10%	447	16%	57	11%	72	14%	204	11%
6-9 Years	3,516	20%	2,365	20%	655	23%	231	45%	119	23%	146	8%
10 Years	301	2%	237	2%	22	1%	30	6%	5	1%	7	0%
11-14 Years	1,550	9%	1234	10%	162	6%	78	15%	55	11%	21	1%
15 Years	371	2%	307	3%	15	1%	28	6%	12	2%	9	0%
16-19 Years	778	4%	671	6%	45	2%	26	5%	31	6%	5	0%
20-24 Years	452	3%	414	3%	11	0%	13	3%	11	2%	3	0%
25-29 Years	379	2%	354	3%	4	0%	12	2%	7	1%	2	0%
30 Years	826	5%	788	7%	2	0%	3	1%	32	6%	1	0%
30+ Years	761	4%	746	6%	0	0%	4	1%	11	2%	0	0%

- Sixty-nine percent (69%) of all adult offenders have mandatory minimum terms (17,585 out of 25, 436).
- The median mandatory minimum term is 5 years.
- Twenty percent (20%) of those with mandatory minimum terms have mandatory minimum terms of 15 years or more.

**Prison Complex Offenders By Mandatory Minimum Term**

Institution	Total	< 18 Months	18 Months	2 Years	3 Years	4 Years	5 Years	6-9 Years	10 Years	11-14 Years	15 Years	16-19 Years	20-24 Years	25-29 Years	30 Years	30+ Years
<b>Bayside</b>	804	45	31	59	139	81	140	188	22	54	14	17	7	4	3	0
<b>Main</b>	100%	6%	4%	7%	17%	10%	17%	23%	3%	7%	2%	2%	1%	0%	0%	0%
<b>Bayside</b>	384	26	22	42	63	29	51	97	8	36	6	0	2	1	1	0
<b>Farm</b>	100%	7%	6%	11%	16%	8%	13%	25%	2%	9%	2%	0%	1%	0%	0%	0%
<b>Bayside</b>	179	23	20	30	52	22	19	12	0	1	0	0	0	0	0	0
<b>Ancora</b>	100%	13%	11%	17%	29%	12%	11%	7%	0%	1%	0%	0%	0%	0%	0%	0%
<b>Bayside Total</b>	1,367	94	73	131	254	132	210	297	30	91	20	17	9	5	4	0
	100%	7%	5%	10%	19%	10%	15%	22%	2%	7%	1%	1%	1%	0%	0%	0%
<b>CRAF</b>	63	15	12	18	16	2	0	0	0	0	0	0	0	0	0	0
<b>Jones Farm</b>	100%	24%	19%	29%	25%	3%	0%	0%	0%	0%	0%	0%	0%	0%	0%	0%
<b>CRAF</b>	297	31	26	44	75	30	28	48	2	7	0	5	1	0	0	0
<b>Reception</b>	100%	10%	9%	15%	25%	10%	9%	16%	1%	2%	0%	2%	0%	0%	0%	0%
<b>CRAF Total</b>	360	46	38	62	91	32	28	48	2	7	0	5	1	0	0	0
	100%	13%	11%	17%	25%	9%	8%	13%	1%	2%	0%	1%	0%	0%	0%	0%
<b>East Jersey</b>	1,250	1	3	9	16	12	35	166	33	244	73	182	108	75	213	80
<b>Main</b>	100%	0%	0%	1%	1%	1%	3%	13%	3%	20%	6%	15%	9%	6%	17%	6%
<b>East Jersey</b>	53	12	2	7	8	0	4	10	2	8	0	0	0	0	0	0
<b>Camp</b>	100%	23%	4%	13%	15%	0%	8%	19%	4%	15%	0%	0%	0%	0%	0%	0%
<b>East Jersey</b>	320	9	6	19	37	19	30	83	9	39	12	26	14	5	9	3
<b>Ad Seg</b>	100%	3%	2%	6%	12%	6%	9%	26%	3%	12%	4%	8%	4%	2%	3%	1%
<b>East Jersey Total</b>	1,623	22	11	35	61	31	69	259	44	291	85	208	122	80	222	83
	100%	1%	1%	2%	4%	2%	4%	16%	3%	18%	5%	13%	8%	5%	14%	5%

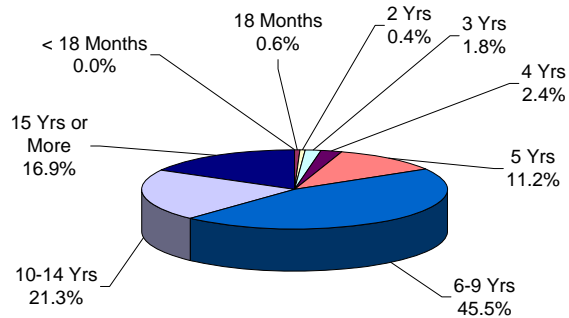
You are Viewing an Archived Copy from the New Jersey State Library  
**Prison Complex Offenders By Mandatory Minimum Term**

Institution	Total	< 18 Months	18 Months	2 Years	3 Years	4 Years	5 Years	6-9 Years	10 Years	11-14 Years	15 Years	16-19 Years	20-24 Years	25-29 Years	30 Years	30+ Years
Midstate	301 100%	22 7%	21 7%	35 12%	61 20%	28 9%	56 19%	71 24%	1 0%	5 2%	0 0%	1 0%	0 0%	0 0%	0 0%	0 0%
NJ State Prison Ad Seg Female	21 100%	0 0%	0 0%	0 0%	5 0%	1 0%	2 0%	9 1%	1 0%	2 0%	0 0%	1 0%	0 0%	0 0%	0 0%	0 0%
NJ State Prison Main	1,580 100%	12 1%	11 1%	22 1%	34 2%	20 1%	35 2%	111 7%	15 1%	60 4%	19 1%	63 4%	82 5%	164 10%	327 20%	605 38%
NJ State Prison Total	1,601 100%	12 1%	11 1%	22 1%	39 2%	21 1%	37 2%	120 7%	16 1%	62 4%	19 1%	64 4%	82 5%	164 10%	327 20%	605 38%
Northern Main	1,815 100%	46 3%	66 4%	85 5%	188 10%	90 5%	182 10%	437 24%	48 3%	235 13%	62 3%	129 7%	81 4%	33 2%	111 6%	22 1%
Northern Ad Seg Male	391 100%	9 2%	10 3%	13 3%	40 10%	21 5%	52 13%	113 29%	11 3%	51 13%	7 2%	23 6%	13 3%	8 2%	15 4%	5 1%
Northern Total	2,206 100%	55 2%	76 3%	98 4%	228 10%	111 5%	234 11%	550 25%	59 3%	286 13%	69 3%	152 7%	94 4%	41 2%	126 6%	27 1%
Riverfront	694 100%	20 3%	26 4%	31 4%	67 10%	44 6%	91 13%	213 31%	28 4%	96 14%	18 3%	34 5%	10 1%	8 1%	7 1%	1 0%
Southern	1,228 100%	78 6%	96 8%	192 16%	313 25%	144 12%	174 14%	177 14%	8 1%	32 3%	4 0%	6 0%	2 0%	1 0%	0 0%	1 0%
South Woods	2,512 100%	60 2%	60 2%	114 5%	252 10%	153 6%	274 11%	630 25%	49 2%	364 14%	92 4%	184 7%	94 4%	55 2%	102 4%	29 1%
<b>SUBTOTAL PRISON MALES</b>	<b>11,892 100%</b>	<b>409 3%</b>	<b>412 3%</b>	<b>720 6%</b>	<b>1,366 11%</b>	<b>696 6%</b>	<b>1,173 10%</b>	<b>2,365 20%</b>	<b>237 2%</b>	<b>1,234 10%</b>	<b>307 3%</b>	<b>671 6%</b>	<b>414 3%</b>	<b>354 3%</b>	<b>788 7%</b>	<b>746 6%</b>

### Prison Complex Offenders By Mandatory Minimum Term

Institution	Total	< 18 Months	18 Months	2 Years	3 Years	4 Years	5 Years	6-9 Years	10 Years	11-14 Years	15 Years	16-19 Years	20-24 Years	25-29 Years	30 Years	30+ Years
ADTC	508	0	3	2	9	12	57	231	30	78	28	26	13	12	3	4
	100%	0%	1%	0%	2%	2%	11%	45%	6%	15%	6%	5%	3%	2%	1%	1%
<b>Subtotal</b>	<b>12,400</b>	<b>409</b>	<b>415</b>	<b>722</b>	<b>1,375</b>	<b>708</b>	<b>1,230</b>	<b>2,596</b>	<b>267</b>	<b>1,312</b>	<b>335</b>	<b>697</b>	<b>427</b>	<b>366</b>	<b>791</b>	<b>750</b>
	100%	3%	3%	6%	11%	6%	10%	21%	2%	11%	3%	6%	3%	3%	6%	6%
Mahan - Female Prison	523	22	14	27	63	42	72	119	5	55	12	31	11	7	32	11
	100%	4%	3%	5%	12%	8%	14%	23%	1%	11%	2%	6%	2%	1%	6%	2%
<b>Total Prison Complex</b>	<b>12,923</b>	<b>431</b>	<b>429</b>	<b>749</b>	<b>1,438</b>	<b>750</b>	<b>1,302</b>	<b>2,715</b>	<b>272</b>	<b>1,367</b>	<b>347</b>	<b>728</b>	<b>438</b>	<b>373</b>	<b>823</b>	<b>761</b>
	100%	3%	3%	6%	11%	6%	10%	21%	2%	11%	3%	6%	3%	3%	6%	6%

**ADTC**

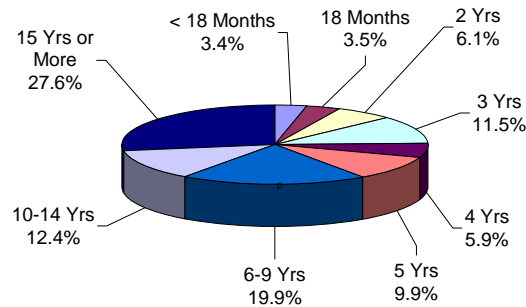


The median mandatory minimum term at ADTC is 8 years 5 months.

Seventy-five percent (75%) of the ADTC population have mandatory minimum sentences (508 of 678).

Thirty-eight percent (38%) have mandatory minimum terms of 10 years or longer.

**PRISON MALES**

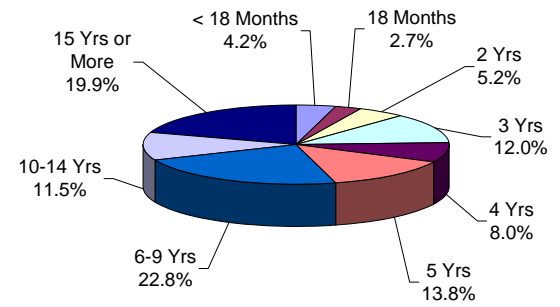


Of the 16,560 prison complex males, 72% (11,892) have mandatory minimum terms.

The median mandatory minimum term for prison complex males is 6 years (ADTC excluded).

Eighty-eight percent (88%) of New Jersey State Prison inmates have mandatory minimum terms and 78% percent of those have minimum terms of 15 years or more.

**FEMALE FACILITIES**



The median mandatory minimum term at Edna Mahan is 5 years.

At Edna Mahan, 56% of the females housed have minimum terms (523 of 929).

Forty-six percent (46%) of the females with mandatory minimum terms have terms of 5 years or less.

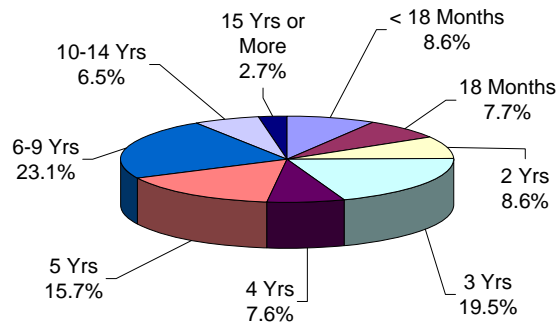
**Youth Complex Offenders By Mandatory Minimum Term**

Institution	Total	< 18 Months	18 Months	2 Years	3 Years	4 Years	5 Years	6-9 Years	10 Years	11-14 Years	15 Years	16-19 Years	20-24 Years	25-29 Years	30 Years	30+ Years
<b>Garden State</b>	1,311 100%	76 6%	92 7%	104 8%	236 18%	109 8%	216 16%	329 25%	13 1%	74 6%	13 1%	36 3%	9 1%	3 0%	1 0%	0 0%
<b>Mountainview</b>	689 100%	105 15%	84 12%	80 12%	180 26%	62 9%	92 13%	84 12%	0 0%	1 0%	0 0%	0 0%	0 0%	0 0%	1 0%	0 0%
<b>Wagner Main</b>	574 100%	39 7%	27 5%	43 7%	92 16%	31 5%	99 17%	165 29%	8 1%	60 10%	2 0%	6 1%	1 0%	1 0%	0 0%	0 0%
<b>Wagner Ad Seg</b>	170 100%	15 9%	6 4%	7 4%	26 15%	10 6%	31 18%	49 29%	1 1%	21 12%	0 0%	3 2%	1 1%	0 0%	0 0%	0 0%
<b>Wagner Minimum Units</b>	97 100%	9 9%	10 10%	9 9%	21 22%	5 5%	9 9%	28 29%	0 0%	6 6%	0 0%	0 0%	0 0%	0 0%	0 0%	0 0%
<b>Wagner Total</b>	841 100%	63 7%	43 5%	59 7%	139 17%	46 5%	139 17%	242 29%	9 1%	87 10%	2 0%	9 1%	2 0%	1 0%	0 0%	0 0%
<b>Total Youth</b>	<b>2,841 100%</b>	<b>244 9%</b>	<b>219 8%</b>	<b>243 9%</b>	<b>555 20%</b>	<b>217 8%</b>	<b>447 16%</b>	<b>655 23%</b>	<b>22 1%</b>	<b>162 6%</b>	<b>15 1%</b>	<b>45 2%</b>	<b>11 0%</b>	<b>4 0%</b>	<b>2 0%</b>	<b>0 0%</b>

### Offenders In Other Facilities By Mandatory Minimum Term

Institution	Total	< 18 Months	18 Months	2 Years	3 Years	4 Years	5 Years	6-9 Years	10 Years	11-14 Years	15 Years	16-19 Years	20-24 Years	25-29 Years	30 Years	30+ Years
Central Medical	8	0	0	0	4	1	1	1	0	0	0	0	0	0	1	0
	100%	0%	0%	0%	50%	13%	13%	13%	0%	0%	0%	0%	0%	0%	13%	0%
County Jail	111	14	8	13	36	9	13	13	1	2	1	0	0	1	0	0
	100%	13%	7%	12%	32%	8%	12%	12%	1%	2%	1%	0%	0%	1%	0%	0%
Halfway House	1,702	184	157	292	537	168	190	132	6	19	8	5	3	1	0	0
	100%	11%	9%	17%	32%	10%	11%	8%	0%	1%	0%	0%	0%	0%	0%	0%
<b>Total Other Facilities</b>	<b>1,821</b>	<b>198</b>	<b>165</b>	<b>305</b>	<b>577</b>	<b>178</b>	<b>204</b>	<b>146</b>	<b>7</b>	<b>21</b>	<b>9</b>	<b>5</b>	<b>3</b>	<b>2</b>	<b>1</b>	<b>0</b>
	<b>100%</b>	<b>11%</b>	<b>9%</b>	<b>17%</b>	<b>32%</b>	<b>10%</b>	<b>11%</b>	<b>8%</b>	<b>0%</b>	<b>1%</b>	<b>0%</b>	<b>0%</b>	<b>0%</b>	<b>0%</b>	<b>0%</b>	<b>0%</b>

#### YOUTH COMPLEX

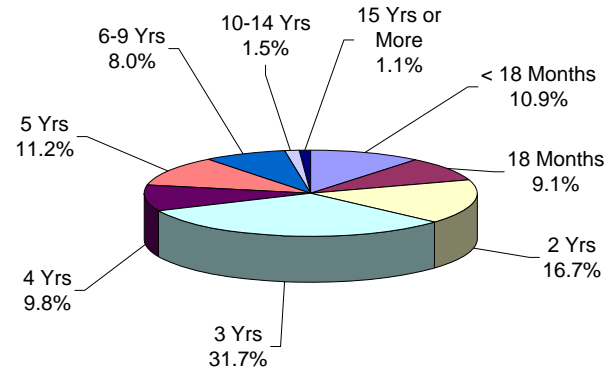


The median mandatory minimum term for youth complex offenders is 3.5 years.

Among youth complex offenders, 67% have mandatory minimum terms (2,841 of 4,235).

Of these, 68% have mandatory minimum terms of 5 years or less.

#### OFFENDERS IN OTHER FACILITIES



The median mandatory minimum term for inmates in 'other facilities' is 2.5 years.

Sixty percent (60%) of the offenders in 'other facilities' have mandatory minimum terms (1,821 of 3,034).

Of these, 89% have mandatory minimum terms of 5 years or less.

***AGE GROUP***

**OFFENDERS IN NEW JERSEY CORRECTIONAL INSTITUTIONS  
ON JANUARY 1, 2009, BY AGE**

The age of the offender is the chronological age as of January 1, 2009.

**OFFENDERS IN CORRECTIONAL INSTITUTIONS BY AGE**

Age	Total		Prison Males		Youth Complex		ADTC		Edna Mahan		Other Facilities	
	#	%	#	%	#	%	#	%	#	%	#	%
TOTAL OFFENDERS	25,436	100%	16,560	100%	4,235	100%	678	100%	929	100%	3,034	100%
< 17 Years	4	0%	0	0%	4	0%	0	0%	0	0%	0	0%
17 Years	19	0%	0	0%	19	0%	0	0%	0	0%	0	0%
18-20 Years	801	3%	117	1%	600	14%	4	1%	17	2%	63	2%
21-22 Years	1,619	6%	381	2%	1,030	24%	15	2%	41	4%	152	5%
23-24 Years	1,988	8%	684	4%	1,038	25%	19	3%	53	6%	194	6%
25-27 Years	2,999	12%	1,413	9%	1,087	26%	21	3%	103	11%	375	12%
28-30 Years	3,110	12%	2,109	13%	434	10%	36	5%	107	12%	424	14%
31-33 Years	2,422	10%	1,944	12%	21	0%	38	6%	76	8%	343	11%
34-36 Years	2,219	9%	1,792	11%	1	0%	54	8%	81	9%	291	10%
37-39 Years	2,274	9%	1,795	11%	0	0%	57	8%	105	11%	317	10%
40-44 Years	3,149	12%	2,460	15%	1	0%	106	16%	148	16%	434	14%
45-49 Years	2,332	9%	1,858	11%	0	0%	114	17%	114	12%	246	8%
50-54 Years	1,291	5%	1,024	6%	0	0%	83	12%	50	5%	134	4%
55-59 Years	674	3%	564	3%	0	0%	54	8%	16	2%	40	1%
60-64 Years	313	1%	245	1%	0	0%	39	6%	13	1%	16	1%
65+ Years	222	1%	174	1%	0	0%	38	6%	5	1%	5	0%
Unspecified	0	0%	0	0%	0	0%	0	0%	0	0%	0	0%

- The median age for adult residents is 33 years.
- Three percent (3%) of all adult offenders are 20 years of age or younger.
- Thirty-eight percent (38%) of all adult offenders are between the ages of 21-30.
- Twenty-eight percent (28%) of all adult offenders are 31 to 39 years of age.
- Thirty-one percent (31%) of all adult offenders are 40 years of age and older.

### Prison Complex Offenders By Age

Institution	Total	< 17 Years	17 Years	18-20 Years	21-22 Years	23-24 Years	25-27 Years	28-30 Years	31-33 Years	34-36 Years	37-39 Years	40-44 Years	45-49 Years	50-54 Years	55-59 Years	60-64 Years	65+ Years	Unspec
<b>Bayside Main</b>	1,305 100%	0 0%	0 0%	1 0%	9 1%	26 2%	104 8%	185 14%	185 14%	177 14%	156 12%	189 14%	148 11%	80 6%	27 2%	11 1%	7 1%	0 0%
<b>Bayside Farm</b>	645 100%	0 0%	0 0%	0 0%	6 1%	12 2%	30 5%	84 13%	85 13%	78 12%	82 13%	120 19%	92 14%	32 5%	13 2%	8 1%	3 0%	0 0%
<b>Bayside Ancora</b>	343 100%	0 0%	0 0%	0 0%	3 1%	7 2%	21 6%	37 11%	51 15%	37 11%	53 15%	66 19%	44 13%	19 6%	4 1%	1 0%	0 0%	0 0%
<b>Bayside Total</b>	2,293 100%	0 0%	0 0%	1 0%	18 1%	45 2%	155 7%	306 13%	321 14%	292 13%	291 13%	375 16%	284 12%	131 6%	44 2%	20 1%	10 0%	0 0%
<b>CRAF Jones Farm</b>	212 100%	0 0%	0 0%	0 0%	0 0%	0 0%	39 18%	29 14%	18 8%	14 7%	23 11%	35 17%	34 16%	15 7%	3 1%	1 0%	1 0%	0 0%
<b>CRAF Reception</b>	628 100%	0 0%	0 0%	36 6%	45 7%	39 6%	73 12%	88 14%	70 11%	63 10%	49 8%	77 12%	45 7%	25 4%	11 2%	3 0%	4 1%	0 0%
<b>CRAF Total</b>	840 100%	0 0%	0 0%	36 4%	45 5%	39 5%	112 13%	117 14%	88 10%	77 9%	72 9%	112 13%	79 9%	40 5%	14 2%	4 0%	5 1%	0 0%
<b>East Jersey Main</b>	1,346 100%	0 0%	0 0%	2 0%	2 0%	26 2%	89 7%	156 12%	149 11%	149 11%	135 10%	211 16%	192 14%	108 8%	70 5%	24 2%	33 2%	0 0%
<b>East Jersey Camp</b>	115 100%	0 0%	0 0%	0 0%	0 0%	0 0%	5 4%	12 10%	13 11%	14 12%	13 11%	26 23%	20 17%	10 9%	2 2%	0 0%	0 0%	0 0%
<b>East Jersey Ad Seg</b>	421 100%	0 0%	0 0%	3 1%	14 3%	52 12%	66 16%	63 15%	61 14%	35 8%	39 9%	38 9%	27 6%	13 3%	3 1%	6 1%	1 0%	0 0%
<b>East Jersey Total</b>	1,882 100%	0 0%	0 0%	5 0%	16 1%	78 4%	160 9%	231 12%	223 12%	198 11%	187 10%	275 15%	239 13%	131 7%	75 4%	30 2%	34 2%	0 0%

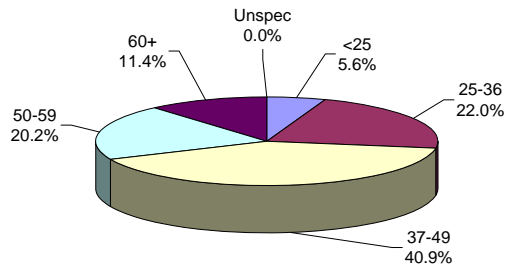
### Prison Complex Offenders By Age

Institution	Total	< 17 Years	17 Years	18-20 Years	21-22 Years	23-24 Years	25-27 Years	28-30 Years	31-33 Years	34-36 Years	37-39 Years	40-44 Years	45-49 Years	50-54 Years	55-59 Years	60-64 Years	65+ Years	Unspec
Midstate	639	0	0	1	13	26	77	72	58	61	72	103	67	40	34	9	6	0
	100%	0%	0%	0%	2%	4%	12%	11%	9%	10%	11%	16%	10%	6%	5%	1%	1%	0%
NJ State Prison Ad Seg Female	27	0	0	7	2	6	3	2	2	1	3	1	0	0	0	0	0	0
	100%	0%	0%	26%	7%	22%	11%	7%	7%	4%	11%	4%	0%	0%	0%	0%	0%	0%
NJ State Prison Main	1,792	0	0	8	55	103	131	185	188	197	170	254	201	124	91	52	33	0
	100%	0%	0%	0%	3%	6%	7%	10%	10%	11%	9%	14%	11%	7%	5%	3%	2%	0%
NJ State Prison Total	1,819	0	0	15	57	109	134	187	190	198	173	255	201	124	91	52	33	0
	100%	0%	0%	1%	3%	6%	7%	10%	10%	11%	10%	14%	11%	7%	5%	3%	2%	0%
Northern Main	2,260	0	0	21	70	142	207	324	255	240	266	307	200	118	62	34	14	0
	100%	0%	0%	1%	3%	6%	9%	14%	11%	11%	12%	14%	9%	5%	3%	2%	1%	0%
Northern Ad Seg Male	500	0	0	20	58	59	91	61	47	40	29	35	32	18	4	4	2	0
	100%	0%	0%	4%	12%	12%	18%	12%	9%	8%	6%	7%	6%	4%	1%	1%	0%	0%
Northern Total	2,760	0	0	41	128	201	298	385	302	280	295	342	232	136	66	38	16	0
	100%	0%	0%	1%	5%	7%	11%	14%	11%	10%	11%	12%	8%	5%	2%	1%	1%	0%
Riverfront	900	0	0	1	10	36	74	114	108	96	109	131	100	67	31	13	10	0
	100%	0%	0%	0%	1%	4%	8%	13%	12%	11%	12%	15%	11%	7%	3%	1%	1%	0%
Southern	2,089	0	0	0	14	40	117	286	298	252	269	367	256	114	57	14	5	0
	100%	0%	0%	0%	1%	2%	6%	14%	14%	12%	13%	18%	12%	5%	3%	1%	0%	0%
South Woods	3,338	0	0	17	80	110	286	411	356	338	327	500	400	241	152	65	55	0
	100%	0%	0%	1%	2%	3%	9%	12%	11%	10%	10%	15%	12%	7%	5%	2%	2%	0%
<b>SUBTOTAL PRISON MALES</b>	<b>16,560</b>	<b>0</b>	<b>0</b>	<b>117</b>	<b>381</b>	<b>684</b>	<b>1,413</b>	<b>2,109</b>	<b>1,944</b>	<b>1,792</b>	<b>1,795</b>	<b>2,460</b>	<b>1,858</b>	<b>1,024</b>	<b>564</b>	<b>245</b>	<b>174</b>	<b>0</b>
	<b>100%</b>	<b>0%</b>	<b>0%</b>	<b>1%</b>	<b>2%</b>	<b>4%</b>	<b>9%</b>	<b>13%</b>	<b>12%</b>	<b>11%</b>	<b>11%</b>	<b>15%</b>	<b>11%</b>	<b>6%</b>	<b>3%</b>	<b>1%</b>	<b>1%</b>	<b>0%</b>

### Prison Complex Offenders By Age

Institution	Total	< 17 Years	17 Years	18-20 Years	21-22 Years	23-24 Years	25-27 Years	28-30 Years	31-33 Years	34-36 Years	37-39 Years	40-44 Years	45-49 Years	50-54 Years	55-59 Years	60-64 Years	65+ Years	Unspec
ADTC	678 100%	0 0%	0 0%	4 1%	15 2%	19 3%	21 3%	36 5%	38 6%	54 8%	57 8%	106 16%	114 17%	83 12%	54 8%	39 6%	38 6%	0 0%
Subtotal	17,238 100%	0 0%	0 0%	121 1%	396 2%	703 4%	1,434 8%	2,145 12%	1,982 11%	1,846 11%	1,852 11%	2,566 15%	1,972 11%	1,107 6%	618 4%	284 2%	212 1%	0 0%
Mahan - Female Prison	929 100%	0 0%	0 0%	17 2%	41 4%	53 6%	103 11%	107 12%	76 8%	81 9%	105 11%	148 16%	114 12%	50 5%	16 2%	13 1%	5 1%	0 0%
Total Prison Complex	18,167 100%	0 0%	0 0%	138 1%	437 2%	756 4%	1,537 8%	2,252 12%	2,058 11%	1,927 11%	1,957 11%	2,714 15%	2,086 11%	1,157 6%	634 3%	297 2%	217 1%	0 0%

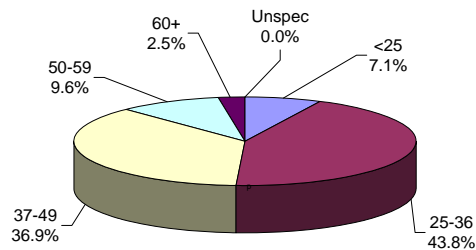
**ADTC**



The median age at ADTC is 44 years.

Thirty-two percent (32%) of the ADTC offenders are 50 years of age or older. This may be compared with 12% of male prison complex offenders and 9% of female (Edna Mahan) offenders.

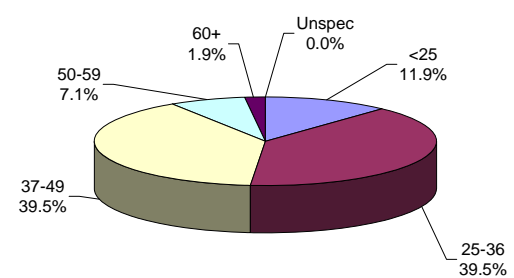
**PRISON MALES**



The median age for prison complex males (excluding ADTC) is 36 years.

Forty-four percent (44%) of the male prison complex population are age 25 to 36.

**FEMALE FACILITIES**



The median age for female inmates (Edna Mahan) is 36 years.

Forty percent (40%) of the women at Edna Mahan are age 25 to 36.

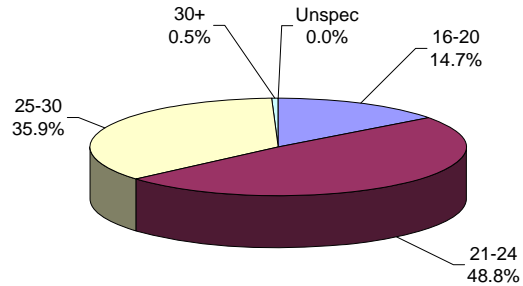
### Youth Complex Offenders By Age

Institution	Total	< 17 Years	17 Years	18-20 Years	21-22 Years	23-24 Years	25-27 Years	28-30 Years	31-33 Years	34-36 Years	37-39 Years	40-44 Years	45-49 Years	50-54 Years	55-59 Years	60-64 Years	65+ Years	Unspec
<b>Garden State</b>	1,833 100%	4 0%	13 1%	229 12%	415 23%	434 24%	498 27%	235 13%	5 0%	0 0%	0 0%	0 0%	0 0%	0 0%	0 0%	0 0%	0 0%	0 0%
<b>Mountainview</b>	1,158 100%	0 0%	2 0%	198 17%	323 28%	305 26%	242 21%	83 7%	3 0%	1 0%	0 0%	1 0%	0 0%	0 0%	0 0%	0 0%	0 0%	0 0%
<b>Wagner Main</b>	856 100%	0 0%	2 0%	94 11%	185 22%	232 27%	252 29%	84 10%	7 1%	0 0%	0 0%	0 0%	0 0%	0 0%	0 0%	0 0%	0 0%	0 0%
<b>Wagner Ad Seg</b>	236 100%	0 0%	2 1%	56 24%	88 37%	40 17%	40 17%	10 4%	0 0%	0 0%	0 0%	0 0%	0 0%	0 0%	0 0%	0 0%	0 0%	0 0%
<b>Wagner Minimum Units</b>	152 100%	0 0%	0 0%	23 15%	19 13%	27 18%	55 36%	22 14%	6 4%	0 0%	0 0%	0 0%	0 0%	0 0%	0 0%	0 0%	0 0%	0 0%
<b>Wagner Total</b>	1,244 100%	0 0%	4 0%	173 14%	292 23%	299 24%	347 28%	116 9%	13 1%	0 0%	0 0%	0 0%	0 0%	0 0%	0 0%	0 0%	0 0%	0 0%
<b>Total Youth</b>	<b>4,235 100%</b>	<b>4 0%</b>	<b>19 0%</b>	<b>600 14%</b>	<b>1,030 24%</b>	<b>1,038 25%</b>	<b>1,087 26%</b>	<b>434 10%</b>	<b>21 0%</b>	<b>1 0%</b>	<b>0 0%</b>	<b>1 0%</b>	<b>0 0%</b>	<b>0 0%</b>	<b>0 0%</b>	<b>0 0%</b>	<b>0 0%</b>	<b>0 0%</b>

### Offenders In Other Facilities By Age

Institution	Total	< 17 Years	17 Years	18-20 Years	21-22 Years	23-24 Years	25-27 Years	28-30 Years	31-33 Years	34-36 Years	37-39 Years	40-44 Years	45-49 Years	50-54 Years	55-59 Years	60-64 Years	65+ Years	Unspec
Central Medical	13	0	0	0	1	0	1	1	0	0	2	3	0	2	1	2	0	0
	100%	0%	0%	0%	8%	0%	8%	8%	0%	0%	15%	23%	0%	15%	8%	15%	0%	0%
County Jail	442	0	0	21	29	23	55	60	48	31	44	64	44	19	2	1	1	0
	100%	0%	0%	5%	7%	5%	12%	14%	11%	7%	10%	14%	10%	4%	0%	0%	0%	0%
Halfway House	2,579	0	0	42	122	171	319	363	295	260	271	367	202	113	37	13	4	0
	100%	0%	0%	2%	5%	7%	12%	14%	11%	10%	11%	14%	8%	4%	1%	1%	0%	0%
<b>Total Other Facilities</b>	<b>3,034</b>	<b>0</b>	<b>0</b>	<b>63</b>	<b>152</b>	<b>194</b>	<b>375</b>	<b>424</b>	<b>343</b>	<b>291</b>	<b>317</b>	<b>434</b>	<b>246</b>	<b>134</b>	<b>40</b>	<b>16</b>	<b>5</b>	<b>0</b>
	<b>100%</b>	<b>0%</b>	<b>0%</b>	<b>2%</b>	<b>5%</b>	<b>6%</b>	<b>12%</b>	<b>14%</b>	<b>11%</b>	<b>10%</b>	<b>10%</b>	<b>14%</b>	<b>8%</b>	<b>4%</b>	<b>1%</b>	<b>1%</b>	<b>0%</b>	<b>0%</b>

#### YOUTH COMPLEX

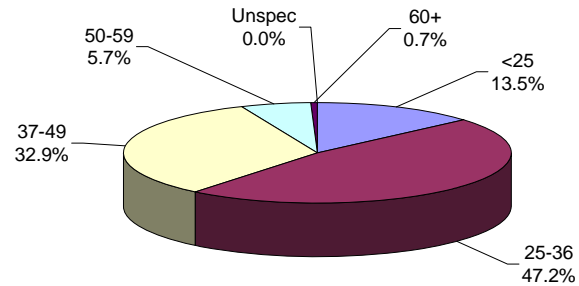


The median age for the youth complex is 23 years.

Eighty-five percent (85%) of all youth complex inmates are between the ages of 21 and 30.

Sixty-four percent (64%) are less than 25 years of age.

#### OFFENDERS IN OTHER FACILITIES



The median age for offenders in 'other facilities' is 33 years.

The median age for offenders housed in county jail is 32 years; while offenders in halfway houses have a median age of 33 years.

***RACE/ETHNIC IDENTIFICATION***

**OFFENDERS IN NEW JERSEY CORRECTIONAL INSTITUTIONS  
ON JANUARY 1, 2009, BY RACE/ETHNIC IDENTIFICATION**

In these tabulations, a Hispanic is a person of Mexican, Puerto Rican, Cuban, South American or other Spanish culture or origin (Spain or Portugal) regardless of complexion.

**OFFENDERS IN CORRECTIONAL INSTITUTIONS BY RACE/ETHNIC IDENTIFICATION**

Ethnic Identification	Total		Prison Males		Youth Complex		ADTC		Edna Mahan		Other Facilities	
	#	%	#	%	#	%	#	%	#	%	#	%
TOTAL OFFENDERS	25,436	100%	16,560	100%	4,235	100%	678	100%	929	100%	3,034	100%
Black	15,623	61%	10,325	62%	2,629	62%	178	26%	477	51%	2,014	66%
White	5,032	20%	3,139	19%	705	17%	347	51%	321	35%	520	17%
Hispanic	4,614	18%	3,006	18%	878	21%	148	22%	122	13%	460	15%
Asian	127	0%	81	0%	20	0%	5	1%	9	1%	12	0%
American Indian	9	0%	6	0%	3	0%	0	0%	0	0%	0	0%
Other or Unspecified	31	0%	3	0%	-	0%	0	0%	0	0%	28	1%

- Sixty-one percent of all state correctional institution offenders were Black, 20% were White and 18% were Hispanic.

**Prison Complex Offenders By Race/Ethnic Identification**

Institution	Total	Black	White	Hispanic	Asian	American Indian	Other or Unspecified
<b>Bayside Main</b>	1,305 100%	803 62%	237 18%	257 20%	8 1%	0 0%	0 0%
<b>Bayside Farm</b>	645 100%	397 62%	146 23%	101 16%	1 0%	0 0%	0 0%
<b>Bayside Ancora</b>	343 100%	233 68%	58 17%	50 15%	1 0%	0 0%	1 0%
<b>Bayside Total</b>	2,293 100%	1,433 62%	441 19%	408 18%	10 0%	0 0%	1 0%
<b>CRAF Jones Farm</b>	212 100%	111 52%	69 33%	27 13%	5 2%	0 0%	0 0%
<b>CRAF Reception</b>	628 100%	373 59%	122 19%	128 20%	5 1%	0 0%	0 0%
<b>CRAF Total</b>	840 100%	484 58%	191 23%	155 18%	10 1%	0 0%	0 0%
<b>East Jersey Main</b>	1,346 100%	893 66%	215 16%	233 17%	4 0%	1 0%	0 0%
<b>East Jersey Camp</b>	115 100%	82 71%	16 14%	17 15%	0 0%	0 0%	0 0%
<b>East Jersey Ad Seg</b>	421 100%	274 65%	64 15%	80 19%	3 1%	0 0%	0 0%
<b>East Jersey Total</b>	1,882 100%	1,249 66%	295 16%	330 18%	7 0%	1 0%	0 0%

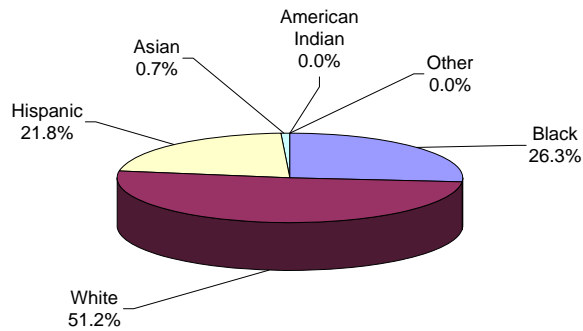
**Prison Complex Offenders By Race/Ethnic Identification**

Institution	Total	Black	White	Hispanic	Asian	American Indian	Other or Unspecified
Midstate	639 100%	325 51%	191 30%	117 18%	5 1%	1 0%	0 0%
NJ State Prison Ad Seg Female	27 100%	17 1%	5 0%	5 0%	0 0%	0 0%	0 0%
NJ State Prison Main	1,792 100%	1,185 65%	334 18%	255 14%	18 1%	0 0%	0 0%
NJ State Prison Total	1,819 100%	1,202 66%	339 19%	260 14%	18 1%	0 0%	0 0%
Northern Main	2,260 100%	1,502 66%	261 12%	487 22%	8 0%	0 0%	2 0%
Northern Ad Seg Male	500 100%	353 71%	59 12%	88 18%	0 0%	0 0%	0 0%
Northern Total	2,760 100%	1,855 67%	320 12%	575 21%	8 0%	0 0%	2 0%
Riverfront	900 100%	547 61%	150 17%	197 22%	5 1%	1 0%	0 0%
Southern	2,089 100%	1,306 63%	415 20%	363 17%	4 0%	1 0%	0 0%
South Woods	3,338 100%	1,924 58%	797 24%	601 18%	14 0%	2 0%	0 0%
<b>SUBTOTAL PRISON MALES</b>	<b>16,560 100%</b>	<b>10,325 62%</b>	<b>3,139 19%</b>	<b>3,006 18%</b>	<b>81 0%</b>	<b>6 0%</b>	<b>3 0%</b>

**Prison Complex Offenders By Race/Ethnic Identification**

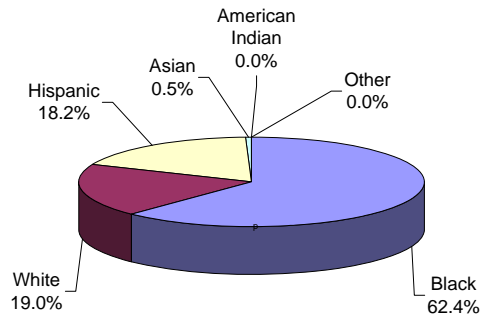
Institution	Total	Black	White	Hispanic	Asian	American Indian	Other or Unspecified
ADTC	678	178	347	148	5	0	0
	100%	26%	51%	22%	1%	0%	0%
<b>Subtotal</b>	<b>17,238</b>	<b>10,503</b>	<b>3,486</b>	<b>3,154</b>	<b>86</b>	<b>6</b>	<b>3</b>
	<b>100%</b>	<b>61%</b>	<b>20%</b>	<b>18%</b>	<b>0%</b>	<b>0%</b>	<b>0%</b>
Mahan - Female Prison	929	477	321	122	9	0	0
	100%	51%	35%	13%	1%	0%	0%
<b>Total Prison Complex</b>	<b>18,167</b>	<b>10,980</b>	<b>3,807</b>	<b>3,276</b>	<b>95</b>	<b>6</b>	<b>3</b>
	<b>100%</b>	<b>60%</b>	<b>21%</b>	<b>18%</b>	<b>1%</b>	<b>0%</b>	<b>0%</b>

**ADTC**



White offenders comprised 51% of the offenders at ADTC.

**PRISON MALES**

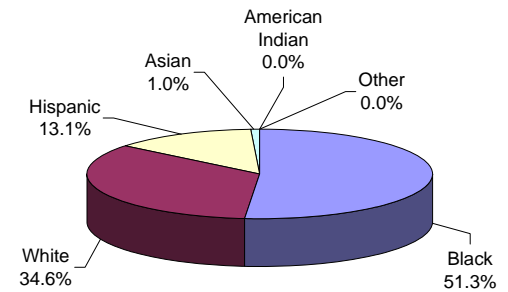


The largest proportion of Black male offenders in a major facility was at Northern State Prison (67%).

The largest proportion of White male offenders at a major facility was at Midstate Correctional Facility (30%).

The largest proportion of Hispanic male offenders at a major facility was at Riverfront (22%).

**FEMALE FACILITIES**



Black offenders comprised 51% of the population at Edna Mahan. This may be compared with Black offenders comprising 62% of prison complex males.

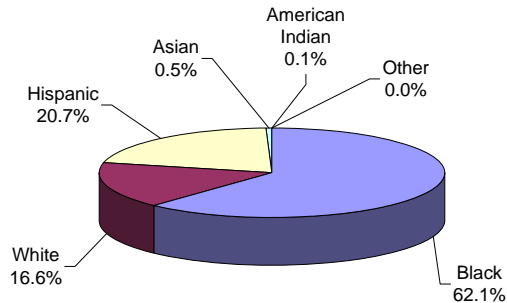
**Youth Complex Offenders By Race/Ethnic Identification**

Institution	Total	Black	White	Hispanic	Asian	American Indian	Other or Unspecified
<b>Garden State</b>	1,833 100%	1,113 61%	319 17%	394 21%	4 0%	3 0%	0 0%
<b>Mountainview</b>	1,158 100%	674 58%	244 21%	230 20%	10 1%	0 0%	0 0%
<b>Wagner Main</b>	856 100%	579 68%	95 11%	177 21%	5 1%	0 0%	0 0%
<b>Wagner Ad Seg</b>	236 100%	164 69%	22 9%	49 21%	1 0%	0 0%	0 0%
<b>Wagner Minimum Units</b>	152 100%	99 65%	25 16%	28 18%	0 0%	0 0%	0 0%
<b>Wagner Total</b>	1,244 100%	842 68%	142 11%	254 20%	6 0%	0 0%	0 0%
<b>Total Youth</b>	<b>4,235</b> <b>100%</b>	<b>2,629</b> <b>62%</b>	<b>705</b> <b>17%</b>	<b>878</b> <b>21%</b>	<b>20</b> <b>0%</b>	<b>3</b> <b>0%</b>	<b>0</b> <b>0%</b>

### Offenders In Other Facilities By Race/Ethnic Identification

Institution	Total	Black	White	Hispanic	Asian	American Indian	Other or Unspecified
Central Medical	13	7	4	2	0	0	0
	100%	54%	31%	15%	0%	0%	0%
County Jail	442	220	117	83	2	0	20
	100%	50%	26%	19%	0%	0%	5%
Halfway House	2,579	1,787	399	375	10	0	8
	100%	69%	15%	15%	0%	0%	0%
<b>Total Other Facilities</b>	<b>3,034</b>	<b>2,014</b>	<b>520</b>	<b>460</b>	<b>12</b>	<b>0</b>	<b>28</b>
	<b>100%</b>	<b>66%</b>	<b>17%</b>	<b>15%</b>	<b>0%</b>	<b>0%</b>	<b>1%</b>

#### YOUTH COMPLEX

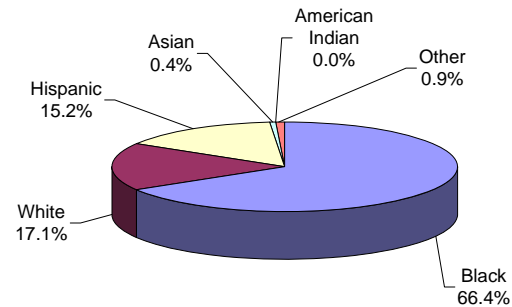


The largest proportion of Black offenders in the youth complex facilities was housed at Wagner (68%).

The largest proportion of White offenders in the youth complex facilities was housed at Mountainview (21%).

The largest proportion of Hispanic offenders in the youth complex facilities was housed at Garden State (21%).

#### OFFENDERS IN OTHER FACILITIES



Race and ethnicity for inmates assigned to 'other facilities' was roughly equivalent to that for the total adult inmate population.

**OFFENDER CHARACTERISTICS REPORT**

---

***COUNTY OF COMMITMENT***

**OFFENDERS IN NEW JERSEY CORRECTIONAL INSTITUTIONS  
ON JANUARY 1, 2009, BY COUNTY OF COMMITMENT**

**OFFENDERS IN NEW JERSEY CORRECTIONAL INSTITUTIONS BY COUNTY OF COMMITMENT**

County of Commitment	Total		Prison Males		Youth Complex		ADTC		Edna Mahan		Other Facilities	
	#	%	#	%	#	%	#	%	#	%	#	%
TOTAL OFFENDERS	25,436	100%	16,560	100%	4,235	100%	678	100%	929	100%	3,034	100%
Atlantic	1,921	8%	1,298	8%	276	7%	33	5%	89	10%	225	7%
Bergen	947	4%	607	4%	152	4%	39	6%	46	5%	103	3%
Burlington	741	3%	469	3%	128	3%	40	6%	40	4%	64	2%
Camden	3,022	12%	1,931	12%	567	13%	62	9%	97	10%	365	12%
Cape May	458	2%	273	2%	87	2%	12	2%	22	2%	64	2%
Cumberland	605	2%	414	3%	100	2%	17	3%	16	2%	58	2%
Essex	4,012	16%	2,874	17%	585	14%	46	7%	116	12%	391	13%
Gloucester	397	2%	239	1%	71	2%	15	2%	19	2%	53	2%
Hudson	2,279	9%	1,529	9%	389	9%	31	5%	72	8%	258	9%
Hunterdon	133	1%	73	0%	26	1%	6	1%	12	1%	16	1%
Mercer	1,294	5%	880	5%	214	5%	27	4%	41	4%	132	4%
Middlesex	1,436	6%	908	5%	277	7%	52	8%	52	6%	147	5%
Monmouth	1,350	5%	883	5%	195	5%	44	6%	67	7%	161	5%
Morris	355	1%	234	1%	48	1%	26	4%	11	1%	36	1%
Ocean	825	3%	517	3%	136	3%	56	8%	37	4%	79	3%
Passaic	2,222	9%	1,368	8%	418	10%	67	10%	67	7%	302	10%
Salem	215	1%	125	1%	36	1%	12	2%	10	1%	32	1%
Somerset	428	2%	257	2%	66	2%	17	3%	20	2%	68	2%
Sussex	161	1%	89	1%	34	1%	9	1%	13	1%	16	1%
Union	2,171	9%	1,393	8%	387	9%	47	7%	64	7%	280	9%
Warren	170	1%	85	1%	41	1%	16	2%	9	1%	19	1%
Not Coded	294	1%	114	1%	2	0%	4	1%	9	1%	165	5%

- Essex County has the highest percentage of commitments at the prison complex (17%) and the youth complex (14%).
- Essex County has the highest percentage of commitments at Edna Mahan (12%).
- Passaic County has the highest percentage of commitments at ADTC (10%).
- Essex County has the highest percentage of commitments (13%) at other adult facilities.
- Two counties, Essex and Camden, combine to comprise roughly a third of total DOC commitments.

You are Viewing an Archived Copy from the New Jersey State Library  
**Prison Complex Offenders By County Of Commitment**

Institution	Total	Atl	Ber	Burl	Cam	Cape May	Cum	Ess	Glou	Hud	Hunt	Mer	Mid	Mon	Mor	Oc	Pas	Sal	Som	Sus	Un	War	Not Coded
<b>Bayside Main</b>	1,305 100%	136 10%	45 3%	46 4%	176 13%	27 2%	40 3%	180 14%	21 2%	140 11%	7 1%	61 5%	69 5%	57 4%	16 1%	34 3%	98 8%	18 1%	21 2%	7 1%	98 8%	5 0%	3 0%
<b>Bayside Farm</b>	645 100%	62 10%	21 3%	28 4%	91 14%	17 3%	15 2%	89 14%	13 2%	61 9%	2 0%	29 4%	28 4%	29 4%	8 1%	15 2%	54 8%	7 1%	6 1%	5 1%	63 10%	2 0%	0 0%
<b>Bayside Ancora</b>	343 100%	33 10%	5 1%	11 3%	44 13%	10 3%	9 3%	49 14%	3 1%	43 13%	1 0%	10 3%	17 5%	11 3%	2 1%	10 3%	43 13%	4 1%	6 2%	3 1%	26 8%	3 1%	0 0%
<b>Bayside Total</b>	2,293 100%	231 10%	71 3%	85 4%	311 14%	54 2%	64 3%	318 14%	37 2%	244 11%	10 0%	100 4%	114 5%	97 4%	26 1%	59 3%	195 9%	29 1%	33 1%	15 1%	187 8%	10 0%	3 0%
<b>CRAF Jones Farm</b>	212 100%	18 8%	8 4%	7 3%	32 15%	3 1%	4 2%	18 8%	3 1%	18 8%	3 1%	3 1%	13 6%	13 6%	4 2%	13 6%	28 13%	2 1%	3 1%	1 0%	17 8%	1 0%	0 0%
<b>CRAF Reception</b>	628 100%	41 7%	20 3%	13 2%	88 14%	15 2%	8 1%	92 15%	8 1%	71 11%	4 1%	39 6%	47 7%	25 4%	16 3%	14 2%	50 8%	1 0%	9 1%	4 1%	58 9%	2 0%	3 0%
<b>CRAF Total</b>	840 100%	59 7%	28 3%	20 2%	120 14%	18 2%	12 1%	110 13%	11 1%	89 11%	7 1%	42 5%	60 7%	38 5%	20 2%	27 3%	78 9%	3 0%	12 1%	5 1%	75 9%	3 0%	3 0%
<b>East Jersey Main</b>	1,346 100%	65 5%	44 3%	29 2%	87 6%	7 1%	30 2%	344 26%	18 1%	117 9%	6 0%	67 5%	77 6%	79 6%	19 1%	34 3%	138 10%	2 0%	25 2%	5 0%	137 10%	4 0%	12 1%
<b>East Jersey Camp</b>	115 100%	1 1%	6 5%	0 0%	4 3%	0 0%	0 0%	27 23%	1 1%	17 15%	1 1%	4 3%	10 9%	9 8%	2 2%	5 4%	14 12%	0 0%	1 1%	0 0%	13 11%	0 0%	0 0%
<b>East Jersey Ad Seg</b>	421 100%	36 9%	14 3%	9 2%	49 12%	8 2%	15 4%	91 22%	6 1%	39 9%	1 0%	25 6%	25 6%	17 4%	2 0%	12 3%	25 6%	2 0%	9 2%	1 0%	30 7%	4 1%	1 0%
<b>East Jersey Total</b>	1,882 100%	102 5%	64 3%	38 2%	140 7%	15 1%	45 2%	462 25%	25 1%	173 9%	8 0%	96 5%	112 6%	105 6%	23 1%	51 3%	177 9%	4 0%	35 2%	6 0%	180 10%	8 0%	13 1%

**Prison Complex Offenders By County Of Commitment**

Institution	Total	Atl	Ber	Burl	Cam	Cape May	Cum	Ess	Glou	Hud	Hunt	Mer	Mid	Mon	Mor	Oc	Pas	Sal	Som	Sus	Un	War	Not Coded
Midstate	639 100%	32 5%	34 5%	19 3%	54 8%	10 2%	10 2%	81 13%	11 2%	48 8%	6 1%	46 7%	52 8%	57 9%	9 1%	40 6%	50 8%	3 0%	10 2%	5 1%	54 8%	7 1%	1 0%
NJ State Prison Ad Seg Female	27 100%	3 0%	3 0%	0 0%	2 0%	1 0%	1 0%	3 0%	0 0%	2 0%	0 0%	3 0%	1 0%	3 0%	0 0%	0 0%	1 0%	1 0%	0 0%	0 0%	3 0%	0 0%	0 0%
NJ State Prison Main	1,792 100%	119 7%	86 5%	52 3%	161 9%	26 1%	43 2%	361 20%	9 0%	98 5%	3 0%	139 8%	110 6%	93 5%	27 1%	75 4%	126 7%	12 1%	28 2%	11 1%	135 7%	7 0%	71 4%
NJ State Prison Total	1,819 100%	122 7%	89 5%	52 3%	163 9%	27 1%	44 2%	364 20%	9 0%	100 5%	3 0%	142 8%	111 6%	96 5%	27 1%	75 4%	127 7%	13 1%	28 2%	11 1%	138 8%	7 0%	71 4%
Northern Main	2,260 100%	70 3%	84 4%	36 2%	135 6%	10 0%	34 2%	569 25%	16 1%	286 13%	10 0%	110 5%	131 6%	113 5%	37 2%	52 2%	238 11%	10 0%	33 1%	6 0%	257 11%	11 0%	12 1%
Northern Ad Seg Male	500 100%	15 3%	17 3%	10 2%	46 9%	9 2%	4 1%	129 26%	6 1%	61 12%	2 0%	29 6%	22 4%	17 3%	6 1%	17 3%	40 8%	4 1%	8 2%	2 0%	53 11%	2 0%	1 0%
Northern Total	2,760 100%	85 3%	101 4%	46 2%	181 7%	19 1%	38 1%	698 25%	22 1%	347 13%	12 0%	139 5%	153 6%	130 5%	43 2%	69 3%	278 10%	14 1%	41 1%	8 0%	310 11%	13 0%	13 0%
Riverfront	900 100%	84 9%	28 3%	50 6%	194 22%	7 1%	34 4%	117 13%	20 2%	59 7%	4 0%	47 5%	46 5%	46 5%	9 1%	22 2%	50 6%	6 1%	13 1%	6 1%	55 6%	1 0%	2 0%
Southern	2,089 100%	243 12%	71 3%	55 3%	278 13%	54 3%	57 3%	278 13%	42 2%	206 10%	8 0%	89 4%	102 5%	110 5%	22 1%	49 2%	187 9%	16 1%	28 1%	8 0%	171 8%	13 1%	2 0%
South Woods	3,338 100%	340 10%	121 4%	104 3%	490 15%	69 2%	110 3%	446 13%	62 2%	263 8%	15 0%	179 5%	158 5%	204 6%	55 2%	125 4%	226 7%	37 1%	57 2%	25 1%	223 7%	23 1%	6 0%
<b>SUBTOTAL PRISON MALES</b>	<b>16,560 100%</b>	<b>1,298 8%</b>	<b>607 4%</b>	<b>469 3%</b>	<b>1,931 12%</b>	<b>273 2%</b>	<b>414 3%</b>	<b>2,874 17%</b>	<b>239 1%</b>	<b>1,529 9%</b>	<b>73 0%</b>	<b>880 5%</b>	<b>908 5%</b>	<b>883 5%</b>	<b>234 1%</b>	<b>517 3%</b>	<b>1,368 8%</b>	<b>125 1%</b>	<b>257 2%</b>	<b>89 1%</b>	<b>1,393 8%</b>	<b>85 1%</b>	<b>114 1%</b>

**Prison Complex Offenders By County Of Commitment**

Institution	Total	Atl	Ber	Burl	Cam	Cape May	Cum	Ess	Glou	Hud	Hunt	Mer	Mid	Mon	Mor	Oc	Pas	Sal	Som	Sus	Un	War	Not Coded
ADTC	678 100%	33 5%	39 6%	40 6%	62 9%	12 2%	17 3%	46 7%	15 2%	31 5%	6 1%	27 4%	52 8%	44 6%	26 4%	56 8%	67 10%	12 2%	17 3%	9 1%	47 7%	16 2%	4 1%
<b>Subtotal</b>	<b>17,238 100%</b>	<b>1,331 8%</b>	<b>646 4%</b>	<b>509 3%</b>	<b>1,993 12%</b>	<b>285 2%</b>	<b>431 3%</b>	<b>2,920 17%</b>	<b>254 1%</b>	<b>1,560 9%</b>	<b>79 0%</b>	<b>907 5%</b>	<b>960 6%</b>	<b>927 5%</b>	<b>260 2%</b>	<b>573 3%</b>	<b>1,435 8%</b>	<b>137 1%</b>	<b>274 2%</b>	<b>98 1%</b>	<b>1,440 8%</b>	<b>101 1%</b>	<b>118 1%</b>
Mahan - Female Prison	929 100%	89 10%	46 5%	40 4%	97 10%	22 2%	16 2%	116 12%	19 2%	72 8%	12 1%	41 4%	52 6%	67 7%	11 1%	37 4%	67 7%	10 1%	20 2%	13 1%	64 7%	9 1%	9 1%
<b>Total Prison Complex</b>	<b>18,167 100%</b>	<b>1,420 8%</b>	<b>692 4%</b>	<b>549 3%</b>	<b>2,090 12%</b>	<b>307 2%</b>	<b>447 2%</b>	<b>3,036 17%</b>	<b>273 2%</b>	<b>1,632 9%</b>	<b>91 1%</b>	<b>948 5%</b>	<b>1012 6%</b>	<b>994 5%</b>	<b>271 1%</b>	<b>610 3%</b>	<b>1,502 8%</b>	<b>147 1%</b>	<b>294 2%</b>	<b>111 1%</b>	<b>1,504 8%</b>	<b>110 1%</b>	<b>127 1%</b>

**Youth Complex Offenders By County Of Commitment**

Institution	Total	Atl	Ber	Burl	Cam	Cape May	Cum	Ess	Glou	Hud	Hunt	Mer	Mid	Mon	Mor	Oc	Pas	Sal	Som	Sus	Un	War	Not Coded
<b>Garden State</b>	1,833 100%	128 7%	63 3%	61 3%	293 16%	44 2%	53 3%	231 13%	40 2%	154 8%	5 0%	107 6%	114 6%	90 5%	12 1%	61 3%	144 8%	16 1%	34 2%	16 1%	153 8%	14 1%	0 0%
<b>Mountainview</b>	1,158 100%	61 5%	49 4%	33 3%	119 10%	24 2%	18 2%	163 14%	15 1%	114 10%	11 1%	41 4%	78 7%	54 5%	25 2%	34 3%	142 12%	5 0%	17 1%	9 1%	127 11%	18 2%	1 0%
<b>Wagner Main</b>	856 100%	59 7%	27 3%	29 3%	113 13%	12 1%	24 3%	114 13%	10 1%	90 11%	8 1%	44 5%	61 7%	36 4%	7 1%	30 4%	92 11%	10 1%	8 1%	4 0%	72 8%	5 1%	1 0%
<b>Wagner Ad Seg</b>	236 100%	15 6%	10 4%	3 1%	21 9%	4 2%	4 2%	57 24%	2 1%	17 7%	2 1%	12 5%	16 7%	12 5%	0 0%	9 4%	24 10%	3 1%	4 2%	2 1%	17 7%	2 1%	0 0%
<b>Wagner Minimum Units</b>	152 100%	13 9%	3 2%	2 1%	21 14%	3 2%	1 1%	20 13%	4 3%	14 9%	0 0%	10 7%	8 5%	3 2%	4 3%	2 1%	16 11%	2 1%	3 2%	3 2%	18 12%	2 1%	0 0%
<b>Wagner Total</b>	1,244 100%	87 7%	40 3%	34 3%	155 12%	19 2%	29 2%	191 15%	16 1%	121 10%	10 1%	66 5%	85 7%	51 4%	11 1%	41 3%	132 11%	15 1%	15 1%	9 1%	107 9%	9 1%	1 0%
<b>Total Youth</b>	4,235 100%	276 7%	44 1%	29 1%	87 2%	7 0%	30 1%	344 8%	18 0%	117 3%	6 0%	67 2%	77 2%	79 2%	19 0%	34 1%	138 3%	2 0%	25 1%	5 0%	137 3%	4 0%	12 0%

You are Viewing an Archived Copy from the New Jersey State Library  
**Offenders In Other Facilities By County Of Commitment**

Institution	Total	Atl	Ber	Burl	Cam	Cape May	Cum	Ess	Glou	Hud	Hunt	Mer	Mid	Mon	Mor	Oc	Pas	Sal	Som	Sus	Un	War	Not Coded	
Central Medical	13 100%	0 0%	4 31%	0 0%	2 15%	0 0%	0 0%	3 23%	0 0%	0 0%	0 0%	1 8%	0 0%	1 8%	0 0%	1 8%	0 0%	0 0%	0 0%	0 0%	0 0%	1 8%	0 0%	0 0%
County Jail	442 100%	17 4%	13 3%	2 0%	23 5%	16 4%	12 3%	17 4%	5 1%	25 6%	4 1%	8 2%	13 3%	26 6%	2 0%	18 4%	22 5%	7 2%	20 5%	6 1%	19 4%	9 2%	158 36%	
Halfway House	2,579 100%	208 8%	86 3%	62 2%	340 13%	48 2%	46 2%	371 14%	48 2%	233 9%	12 0%	123 5%	134 5%	134 5%	34 1%	60 2%	280 11%	25 1%	48 2%	10 0%	260 10%	10 0%	7 0%	
<b>Total Other Facilities</b>	<b>3,034 100%</b>	<b>225 7%</b>	<b>103 3%</b>	<b>64 2%</b>	<b>365 12%</b>	<b>64 2%</b>	<b>58 2%</b>	<b>391 13%</b>	<b>53 2%</b>	<b>258 9%</b>	<b>16 1%</b>	<b>132 4%</b>	<b>147 5%</b>	<b>161 5%</b>	<b>36 1%</b>	<b>79 3%</b>	<b>302 10%</b>	<b>32 1%</b>	<b>68 2%</b>	<b>16 1%</b>	<b>280 9%</b>	<b>19 1%</b>	<b>165 5%</b>	