

April 2010

# Monthly Communicator

Vol. 31 No. 4

Chris Christie, Governor  
Kim Guadagno, Lt. Governor

Jennifer Velez, Commissioner  
David C. Alexander, Director



## Page 2

*Director's Corner*

## Page 3

*Organizations  
participating in Deaf  
and Hard of Hearing  
Awareness Day*

## Page 4

*MKSD Extended  
School Year Program*

*Produced by DHS  
Office of Publications*

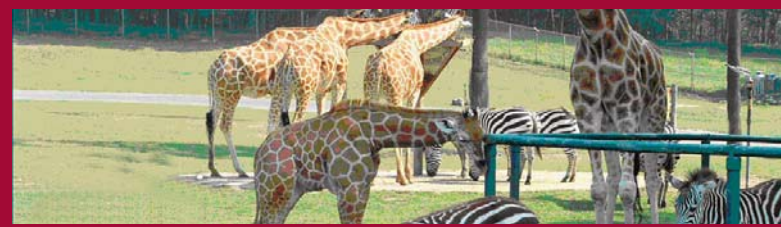
## 26th Annual Deaf and Hard of Hearing Awareness Day

**Saturday June 12**  
**Six Flags Great Adventure**  
**Jackson, NJ**

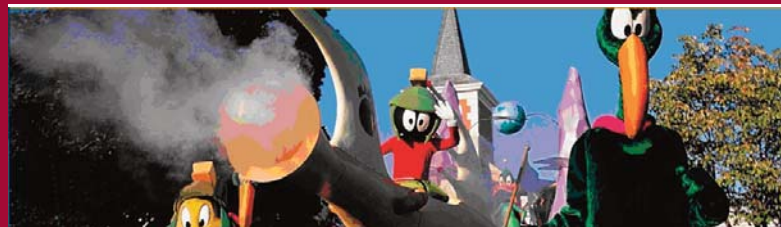
### Rides



### Wild Safari



### Entertainment



**To get your tickets, see Page 6 for participating  
New Jersey organizations serving people with hearing loss.**

# Director's Corner

By David Alexander, Director, Division of the Deaf and Hard of Hearing (DDHH)



The DDHH Advisory Council Meetings are consistently well attended by the public. The participants of these council meetings serve in an advisory capacity to support and guide the work of the division. The meetings provide a forum for the public to share concerns pertaining to services for people with hearing loss.

The recent quarterly meeting is an example of how the public, providing their feedback, and DDHH can together work to improve services for people with hearing loss. During that January meeting, comments were raised about the use of Video Remote Interpreting (VRI) for people who require ASL to access emergency hospital services. It was noted that more hospitals were using VRI for emergency room services until an "in person" interpreter can arrive.

It appears, however, some hospitals are also using VRI for non-emergency health care, instead of requesting an "in person" interpreter that is preferred by many deaf people. The comments and subsequent discussion resulted in an

agreement that when VRI does not meet a person's communication needs then they must inform the hospital's patient care services and/or file a complaint.

A member of the public also noted that people with hearing loss often have difficulty filing a complaint because many are unaware of how or where to do so. It was suggested that there is a need for more consumer education on this matter. As a result, the advisory council has established a sub-committee to review and make recommendations to DDHH. The division will review these recommendations, and work with the community to implement action to ensure people with hearing loss have the knowledge and necessary support to file complaints when needed.

This is clearly an example of how the advisory council can work for you. I encourage people with hearing loss to attend the advisory council meetings to share their experiences and to provide comments. In the event you are unable to personally attend a meeting, please contact a council member so they in turn may bring your comments to the attention of the council. The advisory council, the public and DDHH can effectively work together to improve programs and services for people with hearing loss.

A handwritten signature in black ink that reads "David C. Alexander".

## Reminder:

The deadline for the June 2010 issue is May 1.  
The deadline for the May issue was April 1.

Send e-mail submissions to the editor:  
[Alan.Champion@dhs.state.nj.us](mailto:Alan.Champion@dhs.state.nj.us).

Submissions should be "text only," preferably in a standard word document or within the body of an e-mail message (no pdf files). Photos, which accompany submissions are encouraged.  
For a style sheet, contact the editor.

## Newsletter Subscription:

If you would like to subscribe to the [Monthly Communicator](#), send your request to the editor (e-mail address above).  
*Subscription is free of charge.*

## Monthly Communicator

State of New Jersey  
Department of Human Services  
Division of the Deaf and Hard of Hearing  
Director: David C. Alexander  
Editor: Alan Champion

PO Box 074  
Trenton, NJ 08625-0074  
609-984-7281 V/TTY  
800-792-8339 V/TTY  
609-498-7019 VP (Video Phone)  
[www.state.nj.us/human\\_services/ddhh](http://www.state.nj.us/human_services/ddhh)

*The Monthly Communicator is published by the New Jersey Department of Human Services Division of the Deaf and Hard of Hearing (DDHH), a state agency. DDHH provides information, referral, and advocacy to service recipients. Information or articles provided by others does not imply endorsement by DDHH or the State of New Jersey. There are currently 8,700 copies of the MC distributed monthly.*

Deadline for submissions:  
First of the month for the following month's edition.

## Cochlear Implant Support Group January Meeting

Report Submitted by Kathie Simcox

Thirty-three participants were present at the Cochlear Implant Support Group of Southern, New Jersey meeting held on January 14 at Grace Church, Haddonfield. The participants included parents of children who are cochlear implant recipients or candidates, adult bi-lateral and uni-lateral CI recipients, adult CI candidates, friends/support persons of implantees and professionals. It was a great mix.

After a pizza social hour, Dr. Matt Bakke from Gallaudet University, Washington, DC, provided a very informative presentation. He kept everyone engaged and involved for almost two hours.

Dr. Bakke spoke on how sound captured by a cochlear implant microphone is manipulated through the speech processor to create the electronic signal which stimulates the auditory nerve from the implanted array. A lively discussion took place afterward. Additionally, we were informed about some research that is being done at Gallaudet with the Cochlear America's implant's mapping capabilities as well as a Peer Mentor program. Any questions for Dr. Bakke can be sent to [cochlearimplant1@yahoo.com](mailto:cochlearimplant1@yahoo.com).

In addition to Dr. Bakke, Yunfang Zheng from Montclair State University offered testing on sound localization. The test is a clinical virtual localization test developed by Dr. Koehnke and Dr.

Besing. Yunfang is currently conducting a research project on the ability of listeners with bilateral cochlear implants (BCI) to localize sounds in realistic listening situations, which is recently awarded "2009 Student Research Grant in Audiology" by the American Speech-Language-Hearing Foundation.

BCI users (adults) will be paid \$100/person for participating in this research project. It takes about three to four hours and subjects will learn their hearing ability and their ability to locate sound sources. In addition, the information obtained from this study can be used to develop better ways to help individuals with cochlear implants. Anyone interested should contact: [zhengy2@mail.montclair.edu](mailto:zhengy2@mail.montclair.edu).



Our next meeting is planned for April 29 at Grace Church in Haddonfield. The program particulars

will be announced at a later date. The group is very grateful to DDHH for sponsoring the meeting by providing sign language interpretation and CART services.

## DDHH Advisory Council Meeting

**Friday, April 30**

**9:30 AM to 3:30 PM**

**East Brunswick Public Library**

**2 Jean Walling Civic Center, East Brunswick, NJ 08816-3529**

**The public is invited to attend.**

**Presenters:** Ann Marie De Pierro and David Cooper, Montclair State University audiology doctoral students will speak on "Differences Between Hearing Aid Dispensers, Master's-Level Audiologists and Doctoral-level Audiologists".

**Call DDHH to confirm your attendance: 609-984-7281 V/TTY**

**All DDHH advisory council meetings are fully accessible with sign language interpreters, assistive listening devices (ALDs) and CART (open captioning).**



## DDHH Field Representative Reports for April

### **Different Learners Day at Little Silver's Point Road School**

Submitted by Jason Weiland,  
DDHH Field Representative

It was a gorgeous day with blue skies, as bright eyed third grade class geared their attention to the tall gray haired gentleman who spoke to the group. The eyes of the students followed the constant movement of the hands of Joel "Ted" Rorry, while listening to his voice. Mr. Rorry, who uses sign language in addition to his own voice and also has a cochlear implant (CI), explained to the class about the different levels of hearing and how hearing aids and CI's may provide different opportunities for individuals with hearing loss. Rorry's daughter is also a member of this third grade class and talked about being a Koda.

Rorry is a vocational evaluator at the Bridge to Employment program in Raritan, which is one of three regional employment centers for the Deaf and hard of hearing in New Jersey. One of the day's activities had the students wear ear plugs while listening to sounds coming from a tape recorder.

Able to join the event, I made a presentation on Deaf culture and technology used by individuals who are Deaf or hard of hearing. Since I use ASL to communicate, I interacted with students through a sign language interpreter. Technology such as CapTel, videophones, smoke alarms, doorbell ringers, and other alerting devices were discussed with the group. In addition, other types of technology such as movie captioning in movie theatres and open captioning used in performing arts centers were discussed. The presentations were just a small part of the Point Road School's Different Learners Day event on January 28th. The event, held annually for the school's third grade students, is in its fourth year of existence. The event features guest speakers who provide focus on the following areas: vision, physical, learning, developmental, and hearing. In each of the sessions, the students learn how the differences impact a person every day life and their ability to adapt.

### **Disability Rights New Jersey's Back In Action Program**

Submitted by Traci Burton,  
DDHH Field Representative

We here at the Division of Deaf and Hard of Hearing often are asked, how to put gently used and no longer needed technology into the hands of someone in need. Well, Back In Action is a "classified ads" feature that connects people with available assistive technology. It is primarily for New Jersey residents, although entries from neighboring states are accepted. A user-driven database with entry, edit, delete and search capabilities, the program is designed to facilitate equipment exchange between individuals and is not for the use of vendors or distributors.

Back In Action is a project of the Assistive Technology Advocacy Center, a program of Disability Rights New Jersey (DRNJ). For more information, visit [backinaction.drnj.org](http://backinaction.drnj.org). DRNJ, a non-profit corporation created under the laws of New Jersey, does not profit from the sale of listed devices.

The event was largely run by parent volunteers in addition to guest speakers who gave their time to speak with the school. In addition to the support of their volunteers, the day was sponsored by a local restaurant, McLoone's, who provided lunch and snacks. One of the biggest hits of the day was no doubt the two seeing-eye dogs in the Vision Room. The Learning Differences Day, Different Learners Day, and Disability Awareness Days are new and creative ways to teach children in schools about the differences that individuals may experience and how to meet everyday challenges. The day events are extremely popular in Monmouth, Somerset, Middlesex, and Ocean counties. Each school plans their day differently but the goal is common – teaching children to accept and embrace diversity among those with disabilities and hearing loss.

Note: If you are interested in having the New Jersey Division of the Deaf and Hard of Hearing attend your Disability Awareness event, you may contact Jason Weiland at 609-498-7006 or [Jason.Weiland@dhs.state.nj.us](mailto:Jason.Weiland@dhs.state.nj.us).



## News and Views

### A Monthly Column From The Hearing Loss Association of NJ

Welcome to the April column from the HLA-NJ. This month we have a tip on getting more enjoyment from first-run movies, thanks to the captions offered at movie theaters throughout New Jersey.

Most of us know about captions on TV shows or DVDs. But a surprising number aren't aware that many movie theaters offer captioned movies. To find out what's available near you, just click on [www.captionfish.com](http://www.captionfish.com). The site also offers trailers with captions, and a brief written plot summary. Another good site is [www.mopix.org](http://www.mopix.org). New Jersey has been a leader in making captioned movies available – a real plus.

If you have tips of your own on movie-going or any other topic, please pass them along to us, at [info@hearingloss-nj.org](mailto:info@hearingloss-nj.org). We'd like to publish some of your experiences in this column, including ideas and questions and brief stories about strategies that worked well for you—or you wish you had handled differently.

Join us for our 2010 Walk4Hearing. Every year, HLA-NJ sponsors a Walk4Hearing in New Jersey, one of a network of walks held across the United States and sponsored by the Hearing Loss Association of America. Since its formation in 2006, Walk4Hearing™ has raised more than \$2 million dollars for programs and services for people with hearing loss.

Last October, HLA-NJ's Walk4Hearing in West Windsor raised money for programs ranging from scholarships for high school seniors with hearing loss, to advocacy for better services and support for children, adolescents and adults alike. The Walk builds awareness of hearing issues. And – it's fun. Please join us at this year's walk on Saturday, Oct. 17, 2010 at Mercer County Park West in West Windsor. For information, contact Lois Walker at [Lois.Walker@hearingloss-nj.org](mailto:Lois.Walker@hearingloss-nj.org), or visit [www.walk4hearing.org](http://www.walk4hearing.org).

Scholarships available. HLA-NJ is delighted to announce two scholarships of \$1,000 each for high school seniors who have hearing loss, and are pursuing a college degree or vocational training. Applications and information are available from Sandy Spekman, at [Sandy.Spekman@hearingloss-nj.org](mailto:Sandy.Spekman@hearingloss-nj.org). Deadline for completed applications is May 1, 2010.

Get Involved. For information about HLA-NJ, please contact HLA-NJ President Arlene Romoff at [info@hearingloss-nj.org](mailto:info@hearingloss-nj.org). Or visit [www.hearingloss-nj.org](http://www.hearingloss-nj.org), or come to one of our local chapter meetings. Here is the current schedule:

#### **Monmouth/Ocean Chapter**

April 11 in Lakewood, 1:30 PM

#### **Middlesex County Chapter**

April 20 in South Plainfield, 7:30 PM

#### **Bergen County Chapter**

April 28 in Teaneck, 1:00 PM

## Contact the organizations listed below for the purchase of tickets to the June 12th Deaf and Hard of Hearing Awareness Day

### **Burlington County College's ASL Club**

1338 New Rodgers Road  
Levittown, PA 19056  
908-303-3797 Voice  
Rachy41@yahoo.com

### **Bruce St. School for the Deaf**

333 Clinton Place  
Newark, NJ 07112  
973-705-3952 Voice  
MJMansbach@aol.com

### **Deaf Golf Association**

420 North Union Avenue  
Cranford, NJ 07016  
908-975-0103 VP  
RHSARK@aol.com

### **Eastern Deaf Ladies Gold Association**

264 Swinnerton Street  
Staten Island, NJ 10307-1641  
Sourpeas@aol.com

### **New Jersey Association of the Deaf-Blind**

24 K Worlds Fair Drive  
Somerset, NJ 08873  
732-805-1912 TTY/Voice  
arosen@njadb.org

### **New Jersey Deaf Awareness Week**

9 Vessel Road  
Waretown, NJ 08758  
609-489-7605 VP  
carlna@aol.com

### **New Jersey Deaf Sports**

26 N. Shore Boulevard  
Helmetta, NJ 08828  
732-521-3098 VP  
NJDeafSportsInc@aol.com

### **New Jersey Registry Interpreters for the Deaf**

83 Hawkins Road  
Tabernacle, NJ 08088  
609-980-8037 Voice  
Meg.ellis@comcast.net

### **Northwest Jersey Association of the Deaf**

52 Heritage Court  
Towaco, NJ 07082  
973-326-5720  
Dvvn40@yahoo.com

### **St. Matthew's Lutheran Church for the Deaf**

2222 Vauxhall Road  
Union, NJ 07083  
908-686-3965 Voice  
908-851-2004 TTY  
Gracelu4u@yahoo.com

*Special thanks to Lauren Lercher from NJAD for the above information.  
For more information visit, [www.njadeaf.org](http://www.njadeaf.org).*

---

### **Ticket prices, if purchased through participating Deaf and hard of hearing organizations in advance, before June 12:**

Theme/Safari: \$30  
Hurricane Harbor: \$20  
2-Park (theme and safari) Season Pass: \$85  
3-Park (theme, safari and hurricane harbor) Season Pass: \$105  
Parking Voucher: \$12

Ticket prices the day of the event (on June 12):

Theme/Safari: \$35  
Hurricane Harbor: \$25  
Age two and under: Free

All tickets purchased can be used throughout the 2010 summer season.

## US Congressman Rodney Frelinghuysen Visits Lake Drive School

“How did you decide to become a congressman?” “How many presidents have you met?” “What do you like best about your job?” Last month, students had a lot of these types of questions for Congressman Rodney Frelinghuysen during his visit to Lake Drive School. Congressman Frelinghuysen spent the morning visiting classrooms, thanking the teachers for their dedication, and asking some important questions regarding his own inquiries.

During the tour, Frelinghuysen was eager to understand how the remarkable advances in technology have impacted Deaf education. He also asked school Principal Trish Filiaci and Director of Programs Michele Klimovitch how he could effectively support Lake Drive School and families who have children with hearing loss.

Student teacher Ariel Meltzer was a special highlight of the visit. Ariel attended school at Lake Drive, and is now studying to become a teacher. “You are a wonderful example of what students here achieve,” Congressman Frelinghuysen shared. “This is a remarkable school, thank you all, for all you do.”



Since 1969, The Lake Drive Programs in Mountain Lakes has provided the most comprehensive continuum of educational opportunities for children with hearing loss in New Jersey from birth through high school graduation. The Lake Drive Program's graduation rate is 100 percent. Currently the school serves 200 children from 11 counties in northern and central New Jersey. While New Jersey's high school dropout rate is 17 percent, and the national average for students with hearing loss who do not receive high school diplomas is 50 percent. The teachers, parents and volunteers are all committed to maintaining Lake Drive's 100 percent student graduation rating.

## May is Better Hearing and Speech Month Visit DDHH Information Table on May 5

This annual event provides opportunities to raise awareness about communication disorders and to promote treatment that can improve the quality of life for individuals who experience problems with speaking, understanding, or hearing. On Wednesday, May 5, the New Jersey Division of the Deaf and Hard of Hearing along with other co-sponsors will have exhibit tables offering information about noise pollution and protecting one's hearing. The tables will be available to New Jersey residents and the general public from 10:00 AM – 2:00 PM at 50 East State Street, Second Floor Food Court, located in Trenton, New Jersey.



## New Jersey School for the Deaf-Katzenbach Campus **Extended School Year Program**

July 5 - August 6, 2010

Pre-School - 12th Grade

8:30 AM - 2:00 PM

Join us for summer learning and fun.

### **Program Mission:**

Katzenbach's Extended School Year addresses academic, social and transitional goals through a variety of program options. The five weeks of 5 ½ hours/day classes focus on reading, writing, critical thinking, and math skills in an atmosphere of shared learning and fun. The middle and high school programs utilize a unique hands-on learning approach, weekly theme-related field trips, enrichment in science and social studies, and many team building activities to make learning fun and memorable. Students have the option of choosing their favorite weeks or attending all five weeks. In the high school program, afternoon options include work experience on the campus grounds; computer skills, reading, writing or math tutoring, or some combination of these.

### **MS/HS Residential Component:**

The residential component allows students who either live too far away to commute daily or need more opportunities for language and social development to take advantage of this enriched learning environment. Special activities include ASL, swimming, and trips to local sites and events that reinforce the goals of the weekly themes.

### **Early Childhood Education/Elementary School Programs:**

These programs focus on remediation and continued skill development in reading, language arts, math and ASL. In the elementary school activities will center on health, nutrition and exercise themes. Activities will include preparing and cooking healthy meals, setting up a fitness trail on campus, growing a garden, a trip to a rock climbing wall, and hiking in the area.

### **Middle School Program Themes:**

Week 1 - July 5 Greek Mythology/Astronomy, Visit to a Planetarium

Week 2 - July 12 Engineering, Adventure to Six Flags

Week 3 - July 19 Survivor Week, Camping and a Canoe Expedition

Week 4 - July 26 Archaeology/Paleontology, Tour the Natural Museum in New York

Week 5 - 8/2 Going Green, Journey to a Windmill Farm in Atlantic City

### **High School Program Themes:**

Week 1 - 7/5 Let Freedom Ring, Trip to Constitution Center/Independence Hall

Week 2 - 7/12 Wonderful Word of Microbes, Excursion to the Hall of Science in Queens

Week 3 - 7/19 Coming to America, Investigate Ellis Island

Week 4 - 7/26 DNA Surprises, Discover Ripley's Believe It or Not Museum in AC

Week 5 - 8/2 Fleet Week

For more information, a brochure, application and ESY rates, please contact: Margaret Provost,  
609-530-3156 Voice/VP, [margaret\\_provost@mkdsd.state.nj.us](mailto:margaret_provost@mkdsd.state.nj.us).



# Come and Join the Deaf-Blind League of New Jersey

The Deaf-Blind League of New Jersey, Inc. (DBL-NJ), established September 26, 1982, was formed to provide a means for any person who is Deaf, hard of hearing and blind or visually impaired in the state of New Jersey to receive information, network, to develop friendships and to socialize. Most importantly, the people administering the group would focus on advocacy for individuals who are deaf-blind to ensure individual's would receive entitlements and become more aware about their rights. Students are welcome to attend meetings.

## **Bring your ideas to this organization and help us grow...**

All meetings are located at the Joseph Kohn Center,  
130 Livingston Avenue, New Brunswick, NJ 08901

Meetings are held 10:00 AM to Noon on the third Saturday of the month:

April 17	October 16
May 15	November 20
June 19	December 18
September 25	

To get more information, contact Andrew Rees – [amrees11@comcast.net](mailto:amrees11@comcast.net)  
or Gloria Isakower on [gloriei@aol.com](mailto:gloriei@aol.com).

## **New Jersey State Grange Makes Donation to Petway**

The Deaf Education Department at Petway Elementary School in Vineland, would like to sincerely thank Carol Evans, Bea Benedik, and the New Jersey State Grange for their very generous donation of a SmartBoard to our classroom. Research is indicating a positive correlation between classrooms which use SmartBoard Technology, which makes lessons “come alive” and testing scores. Student motivation and interest with classroom lessons also increase. “SmartBoard Technology incorporates visual and hands-on learning to daily lessons. Students are learning and have fun while doing it.” says Mrs. Diorio.



The New Jersey State Grange is an organization which is dedicated to helping students who are Deaf or hard of hearing throughout the state of New Jersey. For more information about the New Jersey state Grange, please visit [“newjerseygrange.com.”](http://newjerseygrange.com) For more information about Petway Elementary School, visit [www.vineland.org/petway/deaf\\_education.htm](http://www.vineland.org/petway/deaf_education.htm).

Pictured in photo from left to right: Bea Benedik and Carol Evans from the New Jersey State Grange, Jennifer Frederico, Principal of Petway Elementary School, and Jennifer Diorio, Teacher of the Deaf.

## **The Hearing Loss Association of New Jersey**

(HLA-NJ) is pleased to announce a scholarship for high school seniors with a hearing loss, who are pursuing a college degree or vocational training. This scholarship is \$1000 and will be awarded to each of three students residing in New Jersey.

Recipients must have applied to a college or vocational education program, be between the ages of 17 and 20 and wear a hearing aid(s) or cochlear implants. Financial need is not a consideration. The scholarship is a one-time award.

This scholarship is made possible in part by funds raised by the first Garden State Walk4Hearing event. The annual Walk4Hearing is a national project of the Hearing Loss Association of America to raise awareness about the causes and consequences of hearing loss, and to raise funds to provide information and support for people with hearing loss.

Applications are available online at:  
[www.hearingloss-nj.org](http://www.hearingloss-nj.org) or contact:  
Sandy Spekman, Scholarship Chair, HLA-NJ  
328 Meadowbrook Lane, South Orange, NJ 07079  
[Sandy.Spekman@hearingloss-nj.org](mailto:Sandy.Spekman@hearingloss-nj.org)

**Completed applications must be received by May 1, 2010**

---

The Center for Collegiate Deaf Education presents  
Calling all high school students.

## **The InspireMe Symposium** **May 8, 2010**

On Saturday, May 8, Bergen Community College's Center for Collegiate Deaf Education (CCDE) will be hosting the InspireME Symposium for students and their parents - an event that will be the first of its kind since CCDE's inception. The goal we wish to accomplish is to inspire students who are attending various programs located in New Jersey that they can DO and BE anything they wish to be. This symposium will consist of various workshops and presentations. Some of the featured highlights include workshops, informational vendors, a panel with Deaf and hard of hearing community members sharing experiences in the real world, a special keynote speaker, free admission with a continental breakfast and lunch, special parent workshops.

Registration is available at [www.bergen.edu.ccde](http://www.bergen.edu.ccde) – click the InspireMe Symposium link on the left side bar – parents may sign up on the same registration form as students.

Whether you are attending college after high school or entering the work force there is something for everyone.

**Learn, be inspired, plan for the future.**

We are still seeking sponsorship partners. if interested in sponsoring this worthwhile event for our future leaders please go to [www.bergen.edu](http://www.bergen.edu) or contact [ccde@bergen.edu](mailto:ccde@bergen.edu).

Applications for informational vendors also now being accepted. If you have a business or organization that can provide useful information – we want you.

## Sweets and Blankets for Haiti

Submitted by Nora Rodriguez, MS, LCSW

The tragedy that unfolded following the earthquake in Haiti touched the global heart. It also brought great worry and sorrow to the Haitian families living in the US. How many family members were missing and what was their fate? Such was the experience for one middle school student at the Lake Drive School. He helplessly watched the horrific images on the news, and saw the tears shed by his parents and relatives as they waited for any news on their loved ones. It weighed heavily on this kind-hearted and usually cheerful young man. With the guidance of his teacher, he and his classmates decided to spring into action and lend a hand. They planned and carried out a bake sale in the school within a bit more than a week of the quake. In just about two hours, they raised more than \$409, which would be donated to the Red Cross.

The same middle school group has since partnered with an elementary level class to make comfort blanket for the infants and children of Haiti. The Buddy Bear Blanket Project will have a heart-shaped pocket within which a small teddy bear will be tucked. The call has gone out to the school's staff for donations of teddy bears. The two classes work together, with the older children cutting and prepping the fleece; and then pairing with the younger children to finish the blankets. The secondary gain from this effort has been an exercise in cooperation and collaboration; and some role modeling, in the name of community service. A valuable lesson in caring was created by the two class teachers.

The young man is in better spirits, although the news about his family's whereabouts in Haiti was not all good. As has been said repeatedly of the Haitian people in recent days: he, too, faces the future with hope, a smile and the support of those who care.



## Deaf agency opens in Ocean Township

Deaf Mosaics Center (DMC) has opened at 208 Monmouth Road in Ocean Township. DMC's Fischbach has a master's degree in social work and more than 15 years of experience in serving people with disabilities, especially people who are Deaf or hard of hearing. Her agency works to promote employment, financial literacy, family values, counseling, English as a Second Language, supportive housing, ASL interpreters, and deaf and disability diversity training to business and government. Video phones are available to make appointments for interviews or business.

For more information about Deaf Mosaics Center, to make a donation or sponsorship opportunities, visit [www.deafmosaicscenter.org](http://www.deafmosaicscenter.org) or call 732-686-9990, Voice and 800-618-5861 VP.

**Presents two workshops, one in April, one in May**

The Art of the English Presentation:  
An Evening With a Toastmaster

**Mary Bacheller**

April 21, 6:00 PM -8:00 PM  
Wall Library, 2700 Allaire Road, Wall, NJ

This workshop will provide participants with tools to interpret confidently and appropriately. This workshop targets novice, intermediate and educational interpreters. Seasoned interpreters will also benefit through opportunities to practice.

NJRID Members - \$12, Non-Members - \$15  
On-site Registration Available

NJRID is an Approved RID CMP Sponsor for Continuing Education Activities.  
This Professional Studies program is offered for .2 CEUs at the content level for ALL Levels.

For downloadable registration form and more information, visit [www.njrid.org](http://www.njrid.org).  
Deadline for accommodations request is April 10.



Deaf Interpreting – Means What?  
Introduction to Deaf Interpreting

Presented by  
**Eileen Forestal**  
MA, RSC, Master Mentor

Saturday, May 1, 9:00 AM – 4:00 PM

Union County College, 232 East Second Street , Plainfield, NJ 07060-1308  
Target Audience: Deaf participants only with or without Deaf interpreting experience

Registration Fee - \$25. Lunch will be provided.  
Registration Deadline is April 24

NJRID is an approved RID CMP sponsor for continuing educational activities. The professional studies program is offered for .6 CEUs. Content knowledge level - None to Some.

For refund cancellation policy and information, contact Kathy Ferejohn at [kraftkk@yahoo.com](mailto:kraftkk@yahoo.com).  
Deadline for form and payment is April 24.



## New Jersey Registry of Interpreters for the Deaf

Biennial Conference: November 5 - 7, 2010

Fabulous workshops, great entertainment, delicious food, convenient hotel, accommodations, and networking opportunities. Most of all . . . fun.



## Black Deaf Forum

*By Stephanie Olsen*

On Saturday, February 27, the Union County College S.I.G.N. Club held their annual Black Deaf Forum. We were honored this year to have Ms. Lauren Ridloff as presenter.

Ridloff shared some of her experiences growing up a multiracial, Deaf child. Although she started out shy and introverted, she flourished in high school and college and eventually went on to become Miss Deaf America.

Ridloff currently works as a kindergarten teacher and has aspirations of writing a book. She told us one of her personal keys to being successful has been to become part of a "tribe", or a group of "like-minded individuals" that share the same experiences and/or goals. Being part of a group improves your own self-esteem, and fosters mutual progress as you try to emulate others within your group. It was a fascinating discussion. We thank Ms. Ridloff for sharing her wisdom and keys to success with us.



NJSD/MKSD Alumni hosts

### Golf Outing

June 12, 2010 11:00 AM to 1:00 PM  
(Tee time 2:00 PM sharp.)



Cream Ridge Golf Club, 181 Route 539, Cream Ridge, NJ 08514-1520  
Registration and Practice Putting Green and Driving Range

\$100 per player (4 players per group) includes green fee, riding cart, lunch buffet and prize (longest and straightest drive hole and closest to the pin)

For non-players wishing to come and watch - \$25 per person includes lunch buffet.

For more information contact: Heidi Schumacher 22schumacher@gmail.com

For registration contact: Joey DeLusant Jomade2@aol.com

Mail money order (no personal checks please) to:

NJSD/MKSD Alumni, c/o Heidi Schumacher, 26 N. Shore Blvd., Helmetta, NJ 08828-1233  
www.njDeafsports.org

## JOB OPPORTUNITIES

### Deaf Services Center

614 N. Easton Road, Glenside, PA 19038  
215-884-9770 TTY/Voice, 215-884-9774 FAX



Deaf Services Center (DSC) is a dynamic team of behavioral health professionals serving Deaf and Hard of Hearing children and adults. We take great pride that our program is strongly Deaf/HOH centered with about 85percent of our staff being Deaf or Hard of Hearing. Our staff environment is one of incredible teamwork and mutual support. As a result, we are rapidly growing with new programs and expansions of our existing programs. Whether you are a high school graduate, recent college graduate or have many years experience in the field of human services, we have a career building position waiting for you.

DSC is looking for dedicated, motivated, energetic individuals who are fluent in American Sign Language and knowledgeable about Deaf Culture and the Deaf Community to fill the following positions: Staff Interpreter (full time), Behavior Specialist, Residential Counselors (various positions available).

We are anticipating opening a Residential Treatment Facility for Deaf adolescents early Spring 2010. We are interviewing now. Please see below for open positions: Mental Health Therapist (Part Time), Residential Treatment Facility Staff.

Come be a part of our exciting growing professional team. Send your letter of intent and resumes to Linda Claypool, Office Manager/HR, Deaf Services Center, 614 N. Easton Road, Glenside, PA 19038, lclaypool@salisb.com or Fax: 215-884-6301.

## In Memoriam



**Martin L. Sternberg**

January 10, 1925 - February 28, 2010.

Martin L. A. Sternberg, Ed.D., was a native New Yorker. He became Deaf at the age of seven from spinal meningitis. He was educated at Public School 47 for the Deaf and Hard of Hearing in New York City.

A graduate of the City College of New York (1949 B.S. Social Science), American University (M.S. Communication), and New York University, Dr. Sternberg enjoyed a distinguished career as a teacher at Gallaudet, New York, Hofstra, and Adelphi Universities. He was also Chairman of the Board of Trustees of Lexington School for the Deaf and Lexington Center for the Deaf.

Widely known for his book entitled "American Sign Language; A Comprehensive Dictionary" published in 1981, Dr. Sternberg was the author of four ASL dictionaries and a Codies Award-winning CD-ROM, all published by HarperCollins. He also received Emmy and Peabody nominations for his ASL series by the NBC network, "Speaking With Your Hands," as well as medals at various international film and television festivals.

# Religious Access



meets every Sunday, Schalick High School  
718 Centerton Road, Elmer, NJ 08318

Fellowship, free food and coffee starting at 10:00 AM  
Our interpreted service starts at 10:30 AM

April 4, Easter

Free continental breakfast 9:45 AM, Easter Service 10:30 AM  
Plus a special theatrical performance presented in ASL  
Contact us at Victory Assembly of God P.O. 378, Elmer, New Jersey 08318  
856-769-4512 Voice or [SignsforVictory@gmail.com](mailto:SignsforVictory@gmail.com)

Victory Assembly of God in Centerton, New Jersey is a place where Deaf, hard of hearing, and hearing gather under one roof for the same cause and purpose. Ten years ago the church started a Deaf ministry. For ten years, the service was interpreted with no Deaf members present. Recently, the ministry has been blessed by a number of Deaf and hard of hearing people joining the ministry as well as two new faithful interpreters.

When asking Pastor Ralph Siegel of Victory Assembly of God what his vision for the ministry was, he replied, "What I want is that our church will be an open and loving place. I want it to be a place the Deaf can share their needs, thoughts, and hearts." In addition, he stated, "Our church has a lot to learn, but I want the Deaf to come in and we want to adopt their vision . . ."

In our continued efforts, during the month of December, Victory performed a Christmas play entitled, "Case for Christmas." It was the first time at Victory

that the performance had been shadow interpreted. Pastor Siegel was asked how he felt about the play being open to Deaf and hearing alike. With a smile on his face, he replied with excitement, "It was great. Everyone loved it." The interpreters on stage added so much depth and perception to the play.

Victory Assembly of God is a church who genuinely cares for its Deaf members and their needs. In addition to having interpreters and shadow interpreted productions, they have started a sign language class. It is held during the week, and is open to everyone who has an interest to learn the language. The church has a desire to learn, grow, and understand the hearts of those who are Deaf and hard of hearing. Together we will work to support each other. Victory Assembly of God meets every Sunday. Fellowship, fun and food starts at 10:00 AM with our interpreted service starting at 10:30 AM. For additional information please check our website [www.victoryaog.org](http://www.victoryaog.org) or e-mail us at [SignsforVictory@gmail.com](mailto:SignsforVictory@gmail.com).

Interpreters available for church services at

## Emmanuel Church

PO Box 292, Egg Harbor City, New Jersey 08215; 609-965-4644 Voice  
9:30 AM Sunday School, 10:45 AM Sunday Morning Service, 6:30 PM Sunday Evening Service

Located on the corner of Liverpool Ave and the White Horse Pike

# Religious Access

## **Lighthouse Church (T.L.C.) of Cape May Court House**

invites you to see our new ministry for the Deaf and hard of hearing.

Our church services are interpreted into ASL every Sunday at 10:45 AM - Noon

Find us in our brand new building at 1248 Route 9 South, Cape May Court House, NJ 08210.

For information, contact the church at 609-465-6690 Voice / TTY, 609-465-6692 FAX,  
tlccma@comcast.net, [www.tlccma.org](http://www.tlccma.org).

Free parking, nursery, Sunday school and youth programs available

## **Deaf Retreat Weekend**

June 4, 5, and 6, 2010

Friday, Saturday, and Sunday

Maris Stella Retreat and Conference Center

7201 Long Beach Boulevard, Harvey Cedars, NJ 08008 [www.marisstella.org](http://www.marisstella.org)

Presenter: Deacon Patrick Graybill

Theme: "Hunger for God"

The New Jersey Catholic Deaf Pastoral Workers invite you to "come to the seashore" to join us as Deacon Graybill, Deaf Deacon, a former member of the National Theater of the Deaf, and a well known storyteller, helps us realize that our "Hunger for God" is a natural part of our life experiences.

Full weekend cost (Fri,Sat,Sun): \$150 per person (single room) \$125 (double room)  
Includes two nights, five meals, all of the presentations and walks on the beach.

Day rates only (no overnight accommodations):

Friday Evening: \$25 Includes meal and presentation

Saturday: \$40 Includes 3 meals, presentations and evening social

Sunday: \$25 Includes one meal, Mass and presentation

Deadline for registration: May 21

First come, first served.

Send name, address, phone, fax and e-mail with check  
made payable to Ministry With the Deaf to Sister Bonnie McMenamin, SSJ  
Ministry With the Deaf, 631 Market Street, Camden, NJ 08102

For more info contact: Sister Bonnie [bmcmenamin@camdendiocese.org](mailto:bmcmenamin@camdendiocese.org) or 856-583-6111 Voice/TTY



# Communicator Signboard

## Z-Class

Saturday May 1

1:00 to 4:00 PM

Learn more about FaZulous Z products and services  
Morris County Library Auditorium Room  
30 East Hanover Ave, Whippany, NJ 07981  
[www.gti.net/mocolib1/compass.html](http://www.gti.net/mocolib1/compass.html)

Munchies and coffee will be served.  
RSVP by April 26

For more information, contact ZS, Joey Garth, [jgarth@csdvrsoutreach.com](mailto:jgarth@csdvrsoutreach.com).

[www.zvrs.com](http://www.zvrs.com)

Powered by SCDVRS

## *The Summit Playhouse*



presents,

### Sylvia

By A. R. Gurney  
Directed by: Chase Newhart

April 23 - May 8

at 10 New England Avenue, Summit, NJ

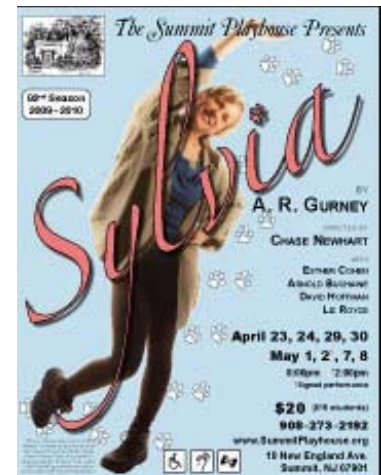
April 23, 24, 29, 30; May 1, 2\*, 7, 8

\*Signed performance on May 2

Assisted listening system available for all performances.

Tickets: \$20/adults, \$15/students

Call 908-273-2192, Voice or visit [www.summitplayhouse.org](http://www.summitplayhouse.org).



# Communicator Signboard

Neptune High School  
Presents

**Keith Wann**

Performer - Comedian - Actor  
Presenter - Consultant - Interpreter  
in

## Iceworm

ASL Comedy Show with Crom Saunders  
April 22 - 7:00 PM  
Free admission

Born hearing to Deaf parents, Keith grew up living in both the hearing and Deaf worlds. Keith has been able to create unique perspectives on the ways of both worlds.

Neptune High School Performing Arts Center  
5 Neptune Boulevard, Neptune, NJ  
Contact [JessicaSwallow@gmail.com](mailto:JessicaSwallow@gmail.com)  
or call 732-776-2234 for more information.



## 24th Annual - Comedy Night

The **Center for Hearing and Communication** presents the 24th Annual Comedy Night on April 21, 2010 in New York City. Enjoy the night and be a part of this riotous evening of stand-up comedy benefiting the programs and services of the Center.

This year's world class line-up of talent includes **Darrell Hammond**, **Colin Quinn** and **Christian Finnegan**. For one night only, punch lines are made accessible to people with hearing loss through real-time captioning, an infrared listening system, and ASL interpreting. It's a one of a kind experience for comedy lovers and anyone who enjoys a great show.

Comedy Night takes place at New York City's renowned **Comix Comedy Club** located at 353 West 14th Street.

Doors open at **7:00 PM** (following a VIP cocktail reception at 6:00 PM).  
Admission price of **\$95** includes two drinks.

For more information, contact **Susan King** at **917-305-7804** or visit [www.chchearing.org](http://www.chchearing.org).

# Communicator Signboard



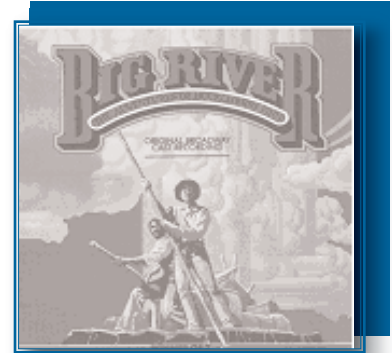
## BIG RIVER

Based on Mark Twain's *The Adventures of Huckleberry Finn*  
Directed by Maureen Broadbent  
On Stage in Burlington, New Jersey

May 7, 8, 14\*, 15, 21 and 22 at 8:00 PM  
May 9\* and 16 at 3:00 PM

\*Shadow interpreted performances  
Saturday May 14 at 8:00 PM and Sunday May 9 at 3:00 PM

Broad Street United Methodist Church, 36 E. Broad Street, Burlington, NJ  
For more information, visit [www.bridgeplayerstheatre.com](http://www.bridgeplayerstheatre.com) 856-303-7620 Voice



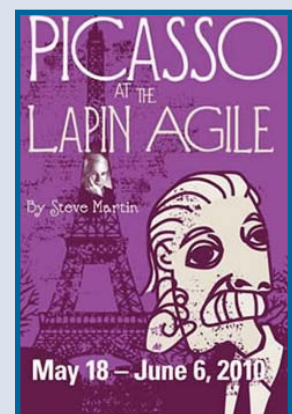
Open Captioned Performance

## Picasso at the Lapin Agile

Modern Art meets Modern Thought

Saturday June 5  
3:00 PM

Two River Theater  
21 Bridge Avenue  
Red Bank, NJ 07701



Pablo Picasso and Albert Einstein meet one magical, mythical night at the  
Lapin Agile Bar in Paris, 1904.

Tickets are \$15 per person for those using the open captioning service.  
For information, contact Michele Klinsky [mklinsky@trtc.org](mailto:mklinsky@trtc.org) or 732-345-1400, x1808 Voice

NJ DEPARTMENT OF HUMAN SERVICES  
DIVISION OF THE DEAF AND HARD OF HEARING  
PO BOX 074  
TRENTON, NJ 08625-0074

ADDRESS SERVICE REQUESTED

PRESORTED  
FIRST CLASS  
U.S. POSTAGE  
PAID  
TRENTON, NJ  
PERMIT No. 21

**Dated Material Please Rush**

## Calendar of Events 2010

### **DDHH Advisory Council Meeting**

**Friday, April 30 9:30 AM to 3:00 PM**

**East Brunswick Public Library**

**2 Civic Boulevard**

**East Brunswick, NJ 08816-3529**

**Call DDHH to confirm your attendance:**

**609-984-7281 V/TTY**

**Union County College**

**S.I.G.N. Club's Annual  
ASL Festival**

**Saturday, April 24**

**Time: 10:00 AM - 4:00 PM**

**Union County College**

**1033 Springfield Avenue**

**Cranford, NJ 07016**

**Contact Shaneice Williams 973-207-7477**

### **Garden State Walk 4 Hearing**

**Saturday October 16, 2010**

**[www.hearingloss-nj.org](http://www.hearingloss-nj.org)**

**DDHH Regular Office Hours: Monday – Friday 8:30 AM - 4:30 PM**  
**Days Closed: Friday April 2 - Good Friday; Monday May 31 - Memorial Day**