



# State of New Jersey 2014-15

## OVERVIEW

HUNTERDON  
FRANKLIN TWP

GRADE SPAN PK-08

19-1600-050  
FRANKLIN TOWNSHIP SCHOOL  
226 QUAKERTOWN ROAD  
QUAKERTOWN, NJ 08868-0368

The New Jersey Department of Education (NJDOE) is pleased to present these annual reports of School Performance. These reports are designed to inform parents, educators and communities about how well a school is performing and preparing its students for college and careers.

In particular, the School Performance Reports seek to:

- **Focus** attention on metrics that are indicative of college and career readiness.
- **Benchmark** a school's performance against other peer schools that are educating similar students, against statewide outcomes, and against state targets to illuminate and build upon a school's strengths and identify areas for improvement.
- **Improve** educational outcomes for students by providing both longitudinal and growth data so that progress can be measured as part of an individual school's efforts to engage in continuous improvement.

While the New Jersey School Performance Reports seek to bring more information to educators and stakeholders about the performance of schools, they do not seek to distill the performance of schools into a single metric, a single score, or a simplified conclusion. Instead, the intention is that educators and stakeholders will engage in deep, lengthy conversations about the full range of the data presented. As educators know well, measuring school performance is both an art and a science. While the School Performance Report brings attention to important student outcomes, NJDOE does not collect data about other essential elements of a school, such as the provision of opportunities to participate and excel in extracurricular activities; the development of non-cognitive skills like time management and perseverance; the pervasiveness of a positive school culture or climate; or the attainment of other employability and technical skills, as many of these data are beyond both the capacity and resources of schools to measure and collect well.

To learn more about New Jersey's school accountability system, please visit: <http://www.nj.gov/education/educators/>.

### DEMOGRAPHIC INFORMATION

HUNTERDON  
FRANKLIN TWP

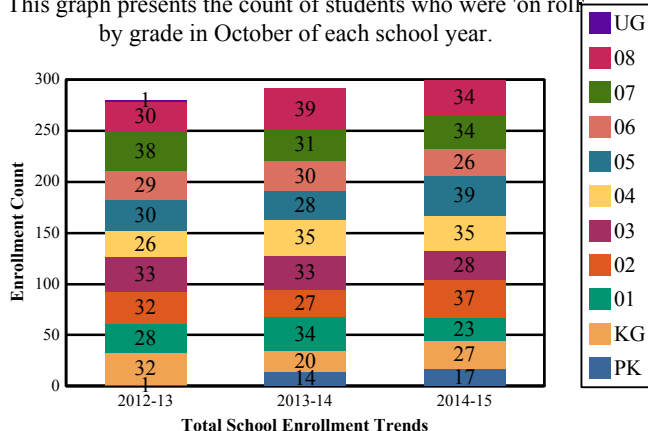
GRADE SPAN PK-08

19-1600-050

FRANKLIN TOWNSHIP SCHOOL  
226 QUAKERTOWN ROAD  
QUAKERTOWN, NJ 08868-0368

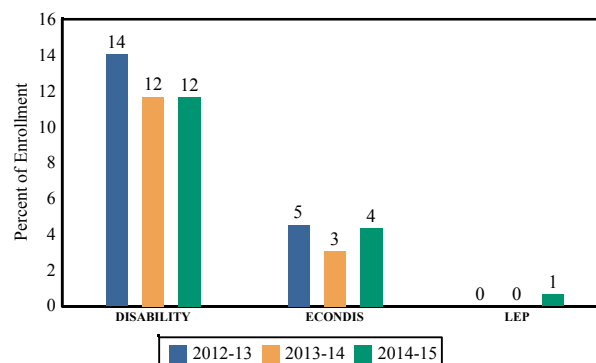
### Enrollment by Grade

This graph presents the count of students who were 'on roll' by grade in October of each school year.



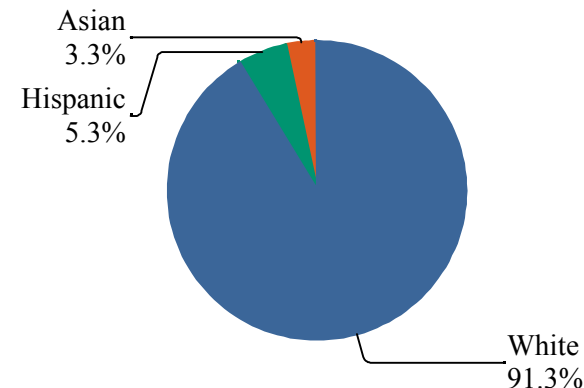
### Enrollment Trends by Program Participation

This graph presents the percentages of students by program participation who were 'on roll' in October of each school year.



### Enrollment by Ethnic/Racial Subgroup

This graph presents the percentages of enrollment for each subgroup defined by the No Child Left Behind Act of 2001.



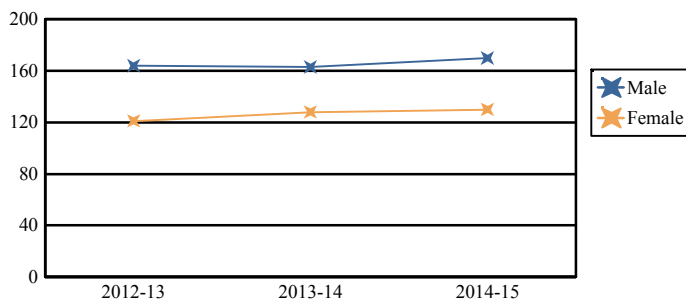
Note: "UG" represents the count of students who are 'on roll' in this school but who are educated in ungraded classrooms, meaning that the classrooms may contain students from multiple grade levels.

### Total School Enrollment

2012-13	285
2013-14	291
2014-15	300

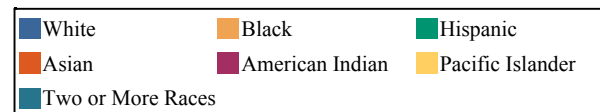
### Enrollment by Gender

This graph presents the count of students by gender who were 'on roll' in October of each school year.



### Current Year Enrollment by Program Participation

2014-15	Count of Students	% of Enrollment
Students with Disability	35	12%
Economically Disadvantaged Students	13	4.3%
English Language Learners	2	0.7%



### Language Diversity

This table presents the percentage of students who primarily speak each language in their home.

2014-15	Percent
English	98.7%
Spanish	1.4%

**ACADEMIC ACHIEVEMENT**

**HUNTERDON  
FRANKLIN TWP**

**GRADE SPAN PK-08**

**19-1600-050**  
**FRANKLIN TOWNSHIP SCHOOL**  
**226 QUAKERTOWN ROAD**  
**QUAKERTOWN, NJ 08868-0368**

The Academic Achievement section measures the content knowledge that students have in English Language Arts/Literacy (ELA/L) and Math as demonstrated in the 2014-2015 *Partnership for Assessment of Readiness for College and Careers* (PARCC) assessments. The below chart consist of three columns. The first column - Schoolwide Performance - includes the percentage of students in ELA/L and Math who met or exceeded grade level expectations. The middle column - Peer School Percentile - indicates how the school's outcomes compared to its peers. The last column - Statewide Percentile - indicates how the school's outcomes compared to schools across the state.

Academic Achievement Indicators	Schoolwide Performance	Peer Percentile	State Percentile
English Language Arts/Literacy Met or Exceeded Expectation	<b>59%</b>	<b>23</b>	<b>68</b>
Math Met or Exceeded Expectation	<b>63%</b>		

**ESEA Waiver - English Language Arts/Literacy**

This table presents, for each subgroup in the school, the total number of valid test scores, the percentage of students who met or exceeded expectations, the assessment participation goal, and the participation rate. The participation goal is established as 95% by the United States Department of Education.

Subgroups	Valid Scores	% Meeting Standards	Participation Goal	Participation Rate	Met Participation?
Schoolwide	182	59.3%	95%	98.5%	<b>YES</b>
White	167	59.3%	95%	98.4%	<b>YES</b>
African American	-	-	--	--	--
Hispanic	-	-	--	--	--
American Indian	-	-	--	--	--
Asian	-	-	--	--	--
Two or More Races	-	-	--	--	--
Students with Disability	-	-	--	--	--
English Language Learners	-	-	--	--	--
Economically Disadvantaged Students	-	-	--	--	--

**YES\* = Met Participation Rate (Participation Averaging applied)**

Data is presented for subgroups when the count is high enough under ESEA Waiver suppression rules.

ACADEMIC ACHIEVEMENT

HUNTERDON  
FRANKLIN TWP

GRADE SPAN PK-08

19-1600-050  
FRANKLIN TOWNSHIP SCHOOL  
226 QUAKERTOWN ROAD  
QUAKERTOWN, NJ 08868-0368

ESEA Waiver - Math

This table presents, for each subgroup in the school, the total number of valid test scores, the percentage of students who met or exceeded expectations, the assessment participation goal, and the participation rate. The participation goal is established as 95% by the United States Department of Education.

Subgroups	Valid Scores	% Meeting Standards	Participation Goal	Participation Rate	Met Participation?
Schoolwide	182	63.2%	95%	98.5%	YES
White	167	62.9%	95%	98.4%	YES
African American	-	-	--	--	--
Hispanic	-	-	--	--	--
American Indian	-	-	--	--	--
Asian	-	-	--	--	--
Two or More Races	-	-	--	--	--
Students with Disability	-	-	--	--	--
English Learner Students	-	-	--	--	--
Economically Disadvantaged Students	-	-	--	--	--

YES\* = Met Participation Rate (Participation Averaging applied)

Data is presented for subgroups when the count is high enough under ESEA Waiver suppression rules.

PARCC Performance Level

The PARCC assesses how well students have learned grade-level material in English Language Arts/Literacy (ELA/L) and Math. The tests include questions that measure students' fundamental skills and knowledge, and require them to think critically, solve problems and support or explain their answers.

The PARCC reports students' overall scale scores that range from 650 to 850. To determine whether students have met academic expectations for their grade level/course in ELA/L and Math, students' overall scale scores are categorized into five Performance Levels. Students performing at levels 4 and 5 (met or exceeded expectations) have demonstrated readiness for the next grade level/course, and are on track for college and careers.

Five Performance Levels				
<b>Level 1:</b> Did Not Yet Meet Expectations <i>(Min. 650)</i>	<b>Level 2:</b> Partially Met Expectations	<b>Level 3:</b> Approached Expectations	<b>Level 4:</b> Met Expectations	<b>Level 5:</b> Exceeded Expectations <i>(Max. 850)</i>

PARCC ELA Performance Distribution - Grade - 03

This table presents the grade level outcomes, as measured by PARCC, in all five performance levels for all subgroups. PARCC consists of five performance levels: Level 1 - Did not yet meet grade-level expectations, Level 2 -Partially met expectations, Level 3 - Approached expectations, Level 4 - Met expectations, and Level 5 - Exceeded expectations.

Subgroup	Valid Scores	Mean Scale Score	State Mean Scale Score	% Level_1	% Level_2	% Level_3	% Level_4	% Level_5	% Met/ Exceeded Expectation	State % Met/Exceeded Expectation
Schoolwide	25	756	744	0%	24%	16%	60%	0%	60%	44%
White	21	753	753	0%	24%	19%	57%	0%	57%	55%
African American	-	-	725	-	-	-	-	-	-	26%
Hispanic	-	-	727	-	-	-	-	-	-	26%
American Indian	-	-	738	-	-	-	-	-	-	40%
Asian	-	-	769	-	-	-	-	-	-	70%
Two or More Races	-	-	751	-	-	-	-	-	-	53%
Students with Disability	-	-	718	-	-	-	-	-	-	24%
English Language Learners	-	-	709	-	-	-	-	-	-	11%
Economically Disadvantaged Students	-	-	724	-	-	-	-	-	-	24%

ACADEMIC ACHIEVEMENT

HUNTERDON  
FRANKLIN TWP

GRADE SPAN PK-08

19-1600-050  
FRANKLIN TOWNSHIP SCHOOL  
226 QUAKERTOWN ROAD  
QUAKERTOWN, NJ 08868-0368

PARCC ELA Performance Distribution - Grade - 04

This table presents the grade level outcomes, as measured by PARCC, in all five performance levels for all subgroups. PARCC consists of five performance levels: Level 1 - Did not yet meet grade-level expectations, Level 2 -Partially met expectations, Level 3 - Approached expectations, Level 4 - Met expectations, and Level 5 - Exceeded expectations.

Subgroup	Valid Scores	Mean Scale Score	State Mean Scale Score	% Level_1	% Level_2	% Level_3	% Level_4	% Level_5	% Met/ Exceeded Expectation	State % Met/Exceeded Expectation
Schoolwide	34	762	751	0%	9%	29%	44%	18%	62%	52%
White	33	762	758	0%	9%	30%	42%	18%	61%	63%
African American	-	-	733	-	-	-	-	-	-	30%
Hispanic	-	-	737	-	-	-	-	-	-	35%
American Indian	-	-	746	-	-	-	-	-	-	52%
Asian	-	-	773	-	-	-	-	-	-	78%
Two or More Races	-	-	760	-	-	-	-	-	-	62%
Students with Disability	-	-	725	-	-	-	-	-	-	25%
English Language Learners	-	-	717	-	-	-	-	-	-	15%
Economically Disadvantaged Students	-	-	734	-	-	-	-	-	-	31%

PARCC ELA Performance Distribution - Grade - 05

This table presents the grade level outcomes, as measured by PARCC, in all five performance levels for all subgroups. PARCC consists of five performance levels: Level 1 - Did not yet meet grade-level expectations, Level 2 -Partially met expectations, Level 3 - Approached expectations, Level 4 - Met expectations, and Level 5 - Exceeded expectations.

Subgroup	Valid Scores	Mean Scale Score	State Mean Scale Score	% Level_1	% Level_2	% Level_3	% Level_4	% Level_5	% Met/ Exceeded Expectation	State % Met/Exceeded Expectation
Schoolwide	36	751	751	0%	8%	39%	53%	0%	53%	53%
White	34	751	757	0%	9%	41%	50%	0%	50%	62%
African American	-	-	734	-	-	-	-	-	-	31%
Hispanic	-	-	737	-	-	-	-	-	-	35%
American Indian	-	-	746	-	-	-	-	-	-	45%
Asian	-	-	771	-	-	-	-	-	-	77%
Two or More Races	-	-	758	-	-	-	-	-	-	61%
Students with Disability	-	-	723	-	-	-	-	-	-	21%
English Language Learners	-	-	717	-	-	-	-	-	-	15%
Economically Disadvantaged Students	-	-	734	-	-	-	-	-	-	31%



ACADEMIC ACHIEVEMENT

HUNTERDON  
FRANKLIN TWP

GRADE SPAN PK-08

19-1600-050  
FRANKLIN TOWNSHIP SCHOOL  
226 QUAKERTOWN ROAD  
QUAKERTOWN, NJ 08868-0368

PARCC ELA Performance Distribution - Grade - 06

This table presents the grade level outcomes, as measured by PARCC, in all five performance levels for all subgroups. PARCC consists of five performance levels: Level 1 - Did not yet meet grade-level expectations, Level 2 -Partially met expectations, Level 3 - Approached expectations, Level 4 - Met expectations, and Level 5 - Exceeded expectations.

Subgroup	Valid Scores	Mean Scale Score	State Mean Scale Score	% Level_1	% Level_2	% Level_3	% Level_4	% Level_5	% Met/ Exceeded Expectation	State % Met/Exceeded Expectation
Schoolwide	24	756	749	0%	4%	33%	58%	4%	63%	50%
White	22	758	755	0%	5%	27%	64%	5%	68%	59%
African American	-	-	732	-	-	-	-	-	-	29%
Hispanic	-	-	736	-	-	-	-	-	-	34%
American Indian	-	-	743	-	-	-	-	-	-	39%
Asian	-	-	770	-	-	-	-	-	-	77%
Two or More Races	-	-	753	-	-	-	-	-	-	57%
Students with Disability	-	-	718	-	-	-	-	-	-	17%
English Language Learners	-	-	711	-	-	-	-	-	-	11%
Economically Disadvantaged Students	-	-	733	-	-	-	-	-	-	30%

**PARCC ELA Performance Distribution - Grade - 07**

This table presents the grade level outcomes, as measured by PARCC, in all five performance levels for all subgroups. PARCC consists of five performance levels: Level 1 - Did not yet meet grade-level expectations, Level 2 -Partially met expectations, Level 3 - Approached expectations, Level 4 - Met expectations, and Level 5 - Exceeded expectations.

Subgroup	Valid Scores	Mean Scale Score	State Mean Scale Score	% Level_1	% Level_2	% Level_3	% Level_4	% Level_5	% Met/ Exceeded Expectation	State % Met/Exceeded Expectation
Schoolwide	32	754	750	6%	6%	22%	56%	9%	66%	53%
White	29	756	757	3%	7%	24%	55%	10%	66%	61%
African American	-	-	730	-	-	-	-	-	-	31%
Hispanic	-	-	736	-	-	-	-	-	-	36%
American Indian	-	-	746	-	-	-	-	-	-	49%
Asian	-	-	777	-	-	-	-	-	-	80%
Two or More Races	-	-	756	-	-	-	-	-	-	58%
Students with Disability	-	-	713	-	-	-	-	-	-	18%
English Language Learners	-	-	703	-	-	-	-	-	-	11%
Economically Disadvantaged Students	-	-	733	-	-	-	-	-	-	33%

PARCC ELA Performance Distribution - Grade - 08

This table presents the grade level outcomes, as measured by PARCC, in all five performance levels for all subgroups. PARCC consists of five performance levels: Level 1 - Did not yet meet grade-level expectations, Level 2 -Partially met expectations, Level 3 - Approached expectations, Level 4 - Met expectations, and Level 5 - Exceeded expectations.

Subgroup	Valid Scores	Mean Scale Score	State Mean Scale Score	% Level_1	% Level_2	% Level_3	% Level_4	% Level_5	% Met/ Exceeded Expectation	State % Met/Exceeded Expectation
Schoolwide	31	757	750	3%	23%	19%	35%	19%	55%	53%
White	28	757	757	4%	21%	18%	39%	18%	57%	61%
African American	-	-	730	-	-	-	-	-	-	31%
Hispanic	-	-	735	-	-	-	-	-	-	37%
American Indian	-	-	741	-	-	-	-	-	-	49%
Asian	-	-	778	-	-	-	-	-	-	80%
Two or More Races	-	-	753	-	-	-	-	-	-	55%
Students with Disability	-	-	713	-	-	-	-	-	-	16%
English Language Learners	-	-	701	-	-	-	-	-	-	9%
Economically Disadvantaged Students	-	-	732	-	-	-	-	-	-	34%

PARCC MATH - Performance Distribution - Grade - 03

This table presents the grade level outcomes, as measured by PARCC, in all five performance levels for all subgroups. PARCC consists of five performance levels: Level 1 - Did not yet meet grade-level expectations, Level 2 -Partially met expectations, Level 3 - Approached expectations, Level 4 - Met expectations, and Level 5 - Exceeded expectations.

Subgroup	Valid Scores	Mean Scale Score	State Mean Scale Score	% Level_1	% Level_2	% Level_3	% Level_4	% Level_5	% Met/ Exceeded Expectation	State % Met/Exceeded Expectation
Schoolwide	25	756	746	0%	8%	32%	52%	8%	60%	46%
White	21	754	752	0%	10%	33%	52%	5%	57%	56%
African American	-	-	728	-	-	-	-	-	-	25%
Hispanic	-	-	733	-	-	-	-	-	-	28%
American Indian	-	-	742	-	-	-	-	-	-	41%
Asian	-	-	772	-	-	-	-	-	-	77%
Two or More Races	-	-	751	-	-	-	-	-	-	54%
Students with Disability	-	-	727	-	-	-	-	-	-	27%
English Language Learners	-	-	724	-	-	-	-	-	-	17%
Economically Disadvantaged Students	-	-	730	-	-	-	-	-	-	26%

**ACADEMIC ACHIEVEMENT**

**HUNTERDON  
FRANKLIN TWP**

**GRADE SPAN PK-08**

**FRANKLIN TOWNSHIP SCHOOL  
226 QUAKERTOWN ROAD  
QUAKERTOWN, NJ 08868-0368**

**PARCC MATH - Performance Distribution - Grade - 04**

This table presents the grade level outcomes, as measured by PARCC, in all five performance levels for all subgroups. PARCC consists of five performance levels: Level 1 - Did not yet meet grade-level expectations, Level 2 - Partially met expectations, Level 3 - Approached expectations, Level 4 - Met expectations, and Level 5 - Exceeded expectations.

Subgroup	Valid Scores	Mean Scale Score	State Mean Scale Score	% Level_1	% Level_2	% Level_3	% Level_4	% Level_5	% Met/ Exceeded Expectation	State % Met/Exceeded Expectation
Schoolwide	34	757	744	0%	9%	15%	74%	3%	76%	42%
White	33	757	749	0%	9%	15%	73%	3%	76%	50%
African American	-	-	727	-	-	-	-	-	-	20%
Hispanic	-	-	732	-	-	-	-	-	-	26%
American Indian	-	-	740	-	-	-	-	-	-	40%
Asian	-	-	769	-	-	-	-	-	-	75%
Two or More Races	-	-	750	-	-	-	-	-	-	52%
Students with Disability	-	-	724	-	-	-	-	-	-	21%
English Language Learners	-	-	722	-	-	-	-	-	-	15%
Economically Disadvantaged Students	-	-	730	-	-	-	-	-	-	23%

**ACADEMIC ACHIEVEMENT**

**HUNTERDON  
FRANKLIN TWP**

**GRADE SPAN PK-08**

**FRANKLIN TOWNSHIP SCHOOL  
226 QUAKERTOWN ROAD  
QUAKERTOWN, NJ 08868-0368**

**PARCC MATH - Performance Distribution - Grade - 05**

This table presents the grade level outcomes, as measured by PARCC, in all five performance levels for all subgroups. PARCC consists of five performance levels: Level 1 - Did not yet meet grade-level expectations, Level 2 - Partially met expectations, Level 3 - Approached expectations, Level 4 - Met expectations, and Level 5 - Exceeded expectations.

Subgroup	Valid Scores	Mean Scale Score	State Mean Scale Score	% Level_1	% Level_2	% Level_3	% Level_4	% Level_5	% Met/Exceeded Expectation	State % Met/Exceeded Expectation
Schoolwide	36	754	744	0%	11%	33%	44%	11%	56%	42%
White	34	754	749	0%	12%	35%	41%	12%	53%	49%
African American	-	-	728	-	-	-	-	-	-	21%
Hispanic	-	-	733	-	-	-	-	-	-	26%
American Indian	-	-	745	-	-	-	-	-	-	46%
Asian	-	-	768	-	-	-	-	-	-	74%
Two or More Races	-	-	749	-	-	-	-	-	-	50%
Students with Disability	-	-	724	-	-	-	-	-	-	19%
English Language Learners	-	-	724	-	-	-	-	-	-	17%
Economically Disadvantaged Students	-	-	731	-	-	-	-	-	-	23%

**ACADEMIC ACHIEVEMENT**

**HUNTERDON  
FRANKLIN TWP**

**GRADE SPAN PK-08**

**FRANKLIN TOWNSHIP SCHOOL  
226 QUAKERTOWN ROAD  
QUAKERTOWN, NJ 08868-0368**

**PARCC MATH - Performance Distribution - Grade - 06**

This table presents the grade level outcomes, as measured by PARCC, in all five performance levels for all subgroups. PARCC consists of five performance levels: Level 1 - Did not yet meet grade-level expectations, Level 2 - Partially met expectations, Level 3 - Approached expectations, Level 4 - Met expectations, and Level 5 - Exceeded expectations.

Subgroup	Valid Scores	Mean Scale Score	State Mean Scale Score	% Level_1	% Level_2	% Level_3	% Level_4	% Level_5	% Met/Exceeded Expectation	State % Met/Exceeded Expectation
Schoolwide	24	760	743	4%	8%	13%	63%	13%	75%	42%
White	22	763	749	5%	5%	9%	68%	14%	82%	50%
African American	-	-	726	-	-	-	-	-	-	19%
Hispanic	-	-	731	-	-	-	-	-	-	25%
American Indian	-	-	740	-	-	-	-	-	-	35%
Asian	-	-	768	-	-	-	-	-	-	75%
Two or More Races	-	-	745	-	-	-	-	-	-	44%
Students with Disability	-	-	718	-	-	-	-	-	-	15%
English Language Learners	-	-	718	-	-	-	-	-	-	14%
Economically Disadvantaged Students	-	-	729	-	-	-	-	-	-	23%

**ACADEMIC ACHIEVEMENT**

**HUNTERDON  
FRANKLIN TWP**

**GRADE SPAN PK-08**

**FRANKLIN TOWNSHIP SCHOOL  
226 QUAKERTOWN ROAD  
QUAKERTOWN, NJ 08868-0368**

**PARCC MATH - Performance Distribution - Grade - 07**

This table presents the grade level outcomes, as measured by PARCC, in all five performance levels for all subgroups. PARCC consists of five performance levels: Level 1 - Did not yet meet grade-level expectations, Level 2 - Partially met expectations, Level 3 - Approached expectations, Level 4 - Met expectations, and Level 5 - Exceeded expectations.

Subgroup	Valid Scores	Mean Scale Score	State Mean Scale Score	% Level_1	% Level_2	% Level_3	% Level_4	% Level_5	% Met/ Exceeded Expectation	State % Met/Exceeded Expectation
Schoolwide	32	750	740	3%	9%	34%	44%	9%	53%	38%
White	29	752	745	0%	10%	38%	41%	10%	52%	46%
African American	-	-	725	-	-	-	-	-	-	17%
Hispanic	-	-	730	-	-	-	-	-	-	23%
American Indian	-	-	734	-	-	-	-	-	-	32%
Asian	-	-	760	-	-	-	-	-	-	68%
Two or More Races	-	-	742	-	-	-	-	-	-	43%
Students with Disability	-	-	715	-	-	-	-	-	-	11%
English Language Learners	-	-	717	-	-	-	-	-	-	11%
Economically Disadvantaged Students	-	-	728	-	-	-	-	-	-	21%



**ACADEMIC ACHIEVEMENT**

HUNTERDON  
FRANKLIN TWP

GRADE SPAN PK-08

FRANKLIN TOWNSHIP SCHOOL  
226 QUAKERTOWN ROAD  
QUAKERTOWN, NJ 08868-0368

**PARCC MATH - Performance Distribution - Grade - 08**

This table presents the grade level outcomes, as measured by PARCC, in all five performance levels for all subgroups. PARCC consists of five performance levels: Level 1 - Did not yet meet grade-level expectations, Level 2 -Partially met expectations, Level 3 - Approached expectations, Level 4 - Met expectations, and Level 5 - Exceeded expectations.

Subgroup	Valid Scores	Mean Scale Score	State Mean Scale Score	% Level_1	% Level_2	% Level_3	% Level_4	% Level_5	% Met/ Exceeded Expectation	State % Met/Exceeded Expectation
Schoolwide	18	734	726	17%	22%	28%	33%	0%	33%	24%
White	17	735	732	18%	18%	29%	35%	0%	35%	29%
African American	-	-	715	-	-	-	-	-	-	14%
Hispanic	-	-	721	-	-	-	-	-	-	19%
American Indian	-	-	722	-	-	-	-	-	-	15%
Asian	-	-	744	-	-	-	-	-	-	46%
Two or More Races	-	-	724	-	-	-	-	-	-	24%
Students with Disability	-	-	705	-	-	-	-	-	-	9%
English Language Learners	-	-	706	-	-	-	-	-	-	10%
Economically Disadvantaged Students	-	-	719	-	-	-	-	-	-	17%

**PARCC ALGEBRA I - Performance Distribution**

This table presents the grade level outcomes, as measured by PARCC, in all five performance levels for all subgroups. PARCC consists of five performance levels: Level 1 - Did not yet meet grade-level expectations, Level 2 -Partially met expectations, Level 3 - Approached expectations, Level 4 - Met expectations, and Level 5 - Exceeded expectations.

Subgroup	Valid Scores	Mean Scale Score	State Mean Scale Score	% Level_1	% Level_2	% Level_3	% Level_4	% Level_5	% Met/ Exceeded Expectation	State % Met/Exceeded Expectation
Schoolwide	13	805	740	0%	0%	0%	62%	38%	100%	40%
White	11	807	746	0%	0%	0%	55%	45%	100%	47%
African American	-	-	722	-	-	-	-	-	-	20%
Hispanic	-	-	725	-	-	-	-	-	-	21%
American Indian	-	-	733	-	-	-	-	-	-	35%
Asian	-	-	769	-	-	-	-	-	-	73%
Two or More Races	-	-	734	-	-	-	-	-	-	35%
Students with Disability	-	-	710	-	-	-	-	-	-	8%
English Language Learners	-	-	710	-	-	-	-	-	-	7%
Economically Disadvantaged Students	-	-	725	-	-	-	-	-	-	21%

### 2015 National Assessment Educational Progress (NAEP)

The National Assessment of Educational Progress (NAEP) is the largest national assessment of what our nation's students know and can do. NAEP assesses fourth-, eighth-, and twelfth-grade students in subjects such as reading, mathematics, science, and writing. The reporting of NAEP scores on state report cards is a federal mandate. The results of NAEP are also published as the Nation's Report Card, and are available for the nation, states, and, in some cases, urban districts. The NAEP scores on the report card include grades four and eight 2015 reading and math scores for New Jersey which are the last scores published.

For subgroup outcomes, visit:

Reading Grade 4 <http://www.nj.gov/education/pr/1415/naep/naep4read.html>  
 Reading Grade 8 <http://www.nj.gov/education/pr/1415/naep/naep8read.html>  
 Math Grade 4 <http://www.nj.gov/education/pr/1415/naep/naep4math.html>  
 Math Grade 8 <http://www.nj.gov/education/pr/1415/naep/naep8math.html>

For more information, visit <http://nces.ed.gov/nationsreportcard/>

#### Proficiency Percentages

Subject	Grade	State/Nation	Below Basic	Basic	Proficient	Advanced
Reading	Grade 4	State (NJ)	25	33	31	12
	Grade 4	Nation	31	33	27	9
	Grade 8	State (NJ)	20	39	35	6
	Grade 8	Nation	24	42	31	4
Math	Grade 4	State (NJ)	14	39	38	9
	Grade 4	Nation	18	42	33	7
	Grade 8	State (NJ)	21	32	30	16
	Grade 8	Nation	29	38	25	8

**ACADEMIC ACHIEVEMENT**

**HUNTERDON  
FRANKLIN TWP**

**GRADE SPAN PK-08**

**19-1600-050  
FRANKLIN TOWNSHIP SCHOOL  
226 QUAKERTOWN ROAD  
QUAKERTOWN, NJ 08868-0368**

**NJASK Results - Science Grade Level - 04**

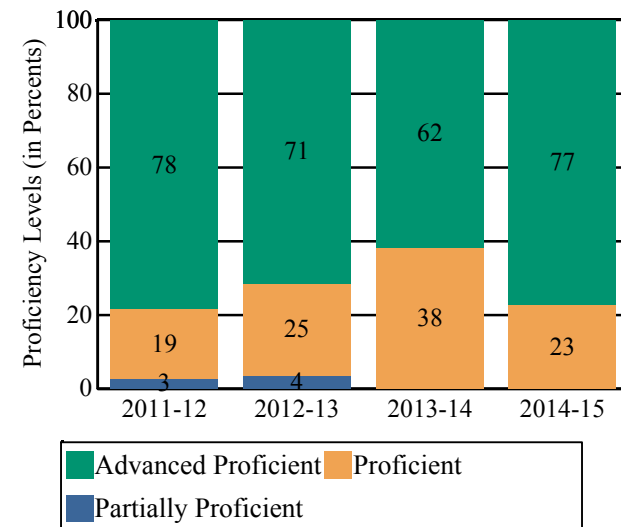
This table presents the grade level proficiency results, as measured by NJASK, in Advanced Proficient, Proficient, and Partially Proficient categories for all appropriate subgroups.

Subgroups	Advanced Proficient	Proficient	Partially Proficient
Schoolwide	77%	23%	0%
White	76%	24%	0%
African American	-	-	-
Hispanic	-	-	-
American Indian	-	-	-
Asian	-	-	-
Two or More Races	-	-	-
Students with Disability	-	-	-
English Language Learners	-	-	-
Economically Disadvantaged Students	-	-	-

Data is presented for subgroups when the count is high enough under ESEA Waiver suppression rules.

**NJASK Proficiency Trends - Science - Grade Level - 04**

This graph presents the grade level outcomes in the categories of Advanced Proficient, Proficient, and Partially Proficient over the last four years.



**ACADEMIC ACHIEVEMENT**

**HUNTERDON  
FRANKLIN TWP**

**GRADE SPAN PK-08**

**19-1600-050**

**FRANKLIN TOWNSHIP SCHOOL  
226 QUAKERTOWN ROAD  
QUAKERTOWN, NJ 08868-0368**

**NJASK Results - Science Grade Level - 08**

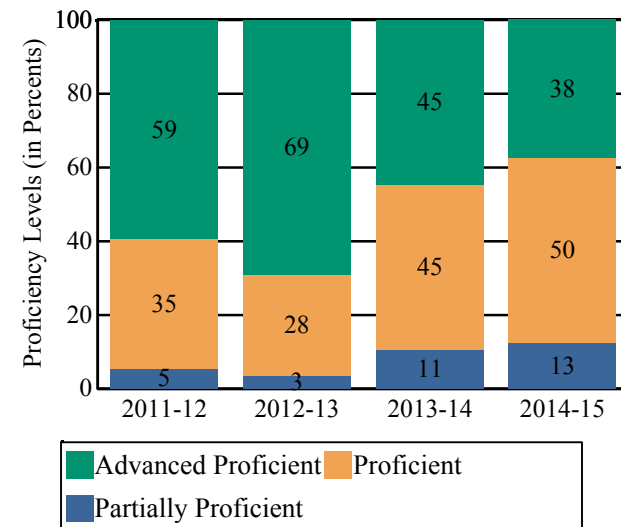
This table presents the grade level proficiency results, as measured by NJASK, in Advanced Proficient, Proficient, and Partially Proficient categories for all appropriate subgroups.

Subgroups	Advanced Proficient	Proficient	Partially Proficient
Schoolwide	38%	50%	13%
White	37%	50%	13%
African American	-	-	-
Hispanic	-	-	-
American Indian	-	-	-
Asian	-	-	-
Two or More Races	-	-	-
Students with Disability	-	-	-
English Language Learners	-	-	-
Economically Disadvantaged Students	-	-	-

Data is presented for subgroups when the count is high enough under ESEA Waiver suppression rules.

**NJASK Proficiency Trends - Science - Grade Level - 08**

This graph presents the grade level outcomes in the categories of Advanced Proficient, Proficient, and Partially Proficient over the last four years.



Students in both elementary and middle schools begin to demonstrate college readiness behaviors long before they even enter high school. Among the behaviors that research has shown to be indicative of successfully graduating high school is regularly attending school. For all elementary and middle schools, this includes the percentage of students that are chronically absent each year, defined as missing more than 10% of possible school days. Also presented is the percentage of students participating in Visual and Performing Arts coursework and Algebra I course outcomes.

### Algebra I Course Enrollment

This table presents the count of students in this school who were reported in the Algebra I course code in NJSMART and the count of students who took the Algebra I test of PARCC.

Algebra I Enrollment Count	Algebra I PARCC Test Count
13	13

### Algebra I Test Taking

This table presents the percentage of students, as reported in NJSMART, who earned a C or higher in their Algebra I course and the percentage of students who met or exceeded expectation on the Algebra I test of PARCC.

Algebra I Percent C or Better	Algebra I PARCC Percent Met or Exceeded Expectation
100.0%	100.0%

- Data Suppressed to protect the confidentiality of students

## COLLEGE AND CAREER READINESS

HUNTERDON  
FRANKLIN TWP

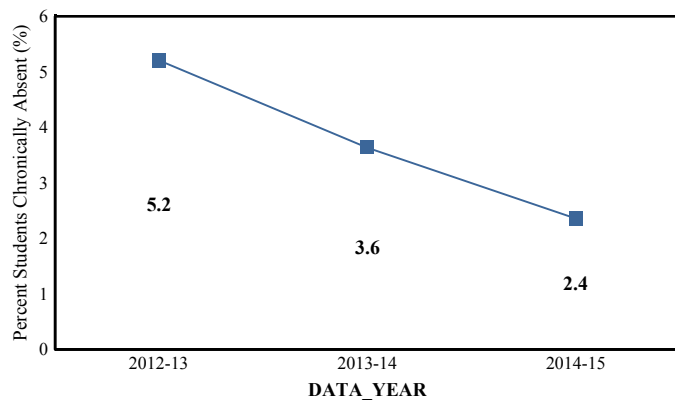
State of New Jersey  
2014-15

GRADE SPAN PK-08

19-1600-050  
FRANKLIN TOWNSHIP SCHOOL  
226 QUAKERTOWN ROAD  
QUAKERTOWN, NJ 08868-0368

### Chronic Absenteeism Trend

This graph presents the percentage of the enrolled students who were chronically absent for the past three years.

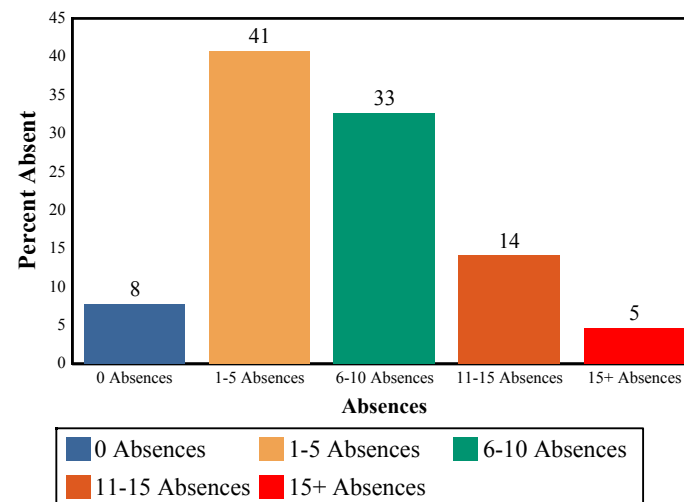


**Chronic Absenteeism for 2014-15**

**2.36%**

### Absenteeism

The chart below presents the percentage of students who were absent in each category of absence: 0 absences, 1 - 5 absences, 6 - 10 absences, 11 - 15 absences, and more than 15 absences. An absence is defined as being 'not present' and includes the days missed regardless of whether they were determined to be excused or unexcused by the school.



Visual and Performing Arts

The chart below contains the percentage of students who were enrolled in at least one Dance, Drama/Theater, Music or Visual Arts class in this school. The last row shows the percentage of students who were enrolled in any Visual and Performing Arts classes in the school.

Percent of Students Enrolled	School	State
Dance	N/R	1.6%
Drama/Theater	N/R	3.9%
Music	97.9%	66.0%
Visual Arts	97.9%	71.1%
Total: All Visual and Performing Arts	97.9%	89.8%

N/R - Data Not Reported



**STUDENT GROWTH**

HUNTERDON

FRANKLIN TWP

GRADE SPAN PK-08

FRANKLIN TOWNSHIP SCHOOL

226 QUAKERTOWN ROAD

QUAKERTOWN, NJ 08868-0368

This section of the performance report presents data about student growth, utilizing the Student Growth Percentile Methodology (SGP). SGP creates a measure of how students progressed in grades 4 through 8 in Language Arts Literacy and in grades 4 through 7 in Math when compared to other students with a similar test score history. A short video explaining the methodology can be found here: <http://www.state.nj.us/education/njsmart/performance/>

The below chart consist of five columns with measures. The first column - Schoolwide Performance - presents the schoolwide median growth score in either English Language Arts/Literacy or Mathematics for all students in the school. The second column - Peer Percentile - indicates how the school's growth performance compares to its group of peer schools. The third column - Statewide Percentile - indicates how a school compares to schools across the state. The last column - Met Target? - indicates whether the school's performance met or exceeded the statewide target, which was set to 35.

The fourth row presents the averages of the peer school percentiles, the averages of statewide percentiles, the percentage of statewide targets met.

Student Growth Indicators	Schoolwide Performance	Peer Percentile	Statewide Percentile	Statewide Target	Met Target?
Student Growth on Language Arts	51	55	56	35	YES
Student Growth on Math	70	91	97	35	YES
		73	77		100%

**Student Growth**

This table presents for all students with growth scores the interaction between their performance on PARCC and their growth scores. For example, in the top left cell the percentage of students who are both in Level 1 - Did not yet meet expectations AND also demonstrating low growth is displayed.

**Language Arts**

(Expectations)	GROWTH		
	Low	Typical	High
Did Not Yet Meet	1%	1%	0%
Partially Met	9%	1%	1%
Approached	13%	10%	6%
Met	14%	16%	19%
Exceeded	1%	2%	8%

**Math**

(Expectations)	GROWTH		
	Low	Typical	High
Did Not Yet Meet	3%	0%	0%
Partially Met	5%	5%	0%
Approached	7%	3%	15%
Met	6%	15%	32%
Exceeded	0%	0%	7%

**Low Growth** is defined as an Student Growth Percentile score less than 35.

**Typical Growth** is defined as an Student Growth Percentile score between 35 and 65.

**High Growth** is defined as a Student Growth Percentile score higher than 65.

**WITHIN SCHOOL ACHIEVEMENT GAP**

HUNTERDON

FRANKLIN TWP

GRADE SPAN PK-08

FRANKLIN TOWNSHIP SCHOOL

226 QUAKERTOWN ROAD

QUAKERTOWN, NJ 08868-0368

This section of the performance report presents data about the achievement gap that exists within a school - as measured by the difference between the students' scale scores at the 25th and 75th percentile in the school, the Interquartile Range (IQR). Taken together with an understanding of the overall and average achievement levels in the school, the IQR furthers an understanding of the range of student outcomes that exist in a school. A school gap smaller than the state gap indicates that the school's range of student outcomes is narrower than the state's while a school gap larger than the state gap indicates that the school's range of student outcomes is broader than the state's.

**Grade Level - 03**

**PARCC Language Arts 25th %ile vs 75th%ile**

This table presents the scale scores associated with students at the bottom (0th percentile), the 25th percentile, the 50th percentile, the 75th percentile and the top (99th percentile) of school's distribution.

Percentile	School Scale Score	State Scale Score
99th	798	850
75th	777	770
50th	758	743
25th	737	715
0th	709	650

	Scale Score Gap - School	Scale Score Gap - State
25th vs 75th Gap	40	55

**Grade Level - 03**

**PARCC MATH 25th %ile vs 75th%ile**

This table presents the scale scores associated with students at the bottom (0th percentile), the 25th percentile, the 50th percentile, the 75th percentile and the top (99th percentile) of school's distribution.

Percentile	School Scale Score	State Scale Score
99th	807	850
75th	779	767
50th	758	745
25th	737	722
0th	703	650

	Scale Score Gap - School	Scale Score Gap - State
25th vs 75th Gap	42	45

**WITHIN SCHOOL ACHIEVEMENT GAP**

HUNTERDON  
FRANKLIN TWP

GRADE SPAN PK-08

19-1600-050  
FRANKLIN TOWNSHIP SCHOOL  
226 QUAKERTOWN ROAD  
QUAKERTOWN, NJ 08868-0368

**Grade Level - 04**

**PARCC Language Arts 25th %ile vs 75th%ile**

This table presents the scale scores associated with students at the bottom (0th percentile), the 25th percentile, the 50th percentile, the 75th percentile and the top (99th percentile) of school's distribution.

Percentile	School Scale Score	State Scale Score
99th	811	850
75th	783	773
50th	760	750
25th	742	728
0th	706	650

	Scale Score Gap - School	Scale Score Gap - State
25th vs 75th Gap	41	45

**Grade Level - 05**

**PARCC Language Arts 25th %ile vs 75th%ile**

This table presents the scale scores associated with students at the bottom (0th percentile), the 25th percentile, the 50th percentile, the 75th percentile and the top (99th percentile) of school's distribution.

Percentile	School Scale Score	State Scale Score
99th	795	850
75th	774	773
50th	750	751
25th	738	728
0th	700	650

	Scale Score Gap - School	Scale Score Gap - State
25th vs 75th Gap	36	45

**Grade Level - 04**

**PARCC MATH 25th %ile vs 75th%ile**

This table presents the scale scores associated with students at the bottom (0th percentile), the 25th percentile, the 50th percentile, the 75th percentile and the top (99th percentile) of school's distribution.

Percentile	School Scale Score	State Scale Score
99th	795	850
75th	771	764
50th	756	742
25th	750	721
0th	704	650

	Scale Score Gap - School	Scale Score Gap - State
25th vs 75th Gap	21	43

**Grade Level - 05**

**PARCC MATH 25th %ile vs 75th%ile**

This table presents the scale scores associated with students at the bottom (0th percentile), the 25th percentile, the 50th percentile, the 75th percentile and the top (99th percentile) of school's distribution.

Percentile	School Scale Score	State Scale Score
99th	799	850
75th	776	763
50th	752	743
25th	739	723
0th	707	650

	Scale Score Gap - School	Scale Score Gap - State
25th vs 75th Gap	37	40

**WITHIN SCHOOL ACHIEVEMENT GAP**

HUNTERDON  
FRANKLIN TWP

GRADE SPAN PK-08

19-1600-050  
FRANKLIN TOWNSHIP SCHOOL  
226 QUAKERTOWN ROAD  
QUAKERTOWN, NJ 08868-0368

**Grade Level - 06**

**PARCC Language Arts 25th %ile vs 75th%ile**

This table presents the scale scores associated with students at the bottom (0th percentile), the 25th percentile, the 50th percentile, the 75th percentile and the top (99th percentile) of school's distribution.

Percentile	School Scale Score	State Scale Score
99th	806	850
75th	773	770
50th	756	749
25th	745	726
0th	715	650

	Scale Score Gap - School	Scale Score Gap - State
25th vs 75th Gap	28	44

**Grade Level - 07**

**PARCC Language Arts 25th %ile vs 75th%ile**

This table presents the scale scores associated with students at the bottom (0th percentile), the 25th percentile, the 50th percentile, the 75th percentile and the top (99th percentile) of school's distribution.

Percentile	School Scale Score	State Scale Score
99th	806	850
75th	777	776
50th	760	751
25th	742	724
0th	665	650

	Scale Score Gap - School	Scale Score Gap - State
25th vs 75th Gap	35	52

**Grade Level - 06**

**PARCC MATH 25th %ile vs 75th%ile**

This table presents the scale scores associated with students at the bottom (0th percentile), the 25th percentile, the 50th percentile, the 75th percentile and the top (99th percentile) of school's distribution.

Percentile	School Scale Score	State Scale Score
99th	799	850
75th	780	763
50th	765	742
25th	751	721
0th	692	650

	Scale Score Gap - School	Scale Score Gap - State
25th vs 75th Gap	29	42

**Grade Level - 07**

**PARCC MATH 25th %ile vs 75th%ile**

This table presents the scale scores associated with students at the bottom (0th percentile), the 25th percentile, the 50th percentile, the 75th percentile and the top (99th percentile) of school's distribution.

Percentile	School Scale Score	State Scale Score
99th	803	850
75th	764	759
50th	750	740
25th	738	720
0th	650	650

	Scale Score Gap - School	Scale Score Gap - State
25th vs 75th Gap	26	39

**WITHIN SCHOOL ACHIEVEMENT GAP**

HUNTERDON  
FRANKLIN TWP

**Grade Level - 08**

**PARCC Language Arts 25th %ile vs 75th%ile**

This table presents the scale scores associated with students at the bottom (0th percentile), the 25th percentile, the 50th percentile, the 75th percentile and the top (99th percentile) of school's distribution.

Percentile	School Scale Score	State Scale Score
99th	817	850
75th	780	777
50th	757	751
25th	725	723
0th	685	650

	Scale Score Gap - School	Scale Score Gap - State
25th vs 75th Gap	55	54

19-1600-050  
FRANKLIN TOWNSHIP SCHOOL  
226 QUAKERTOWN ROAD  
QUAKERTOWN, NJ 08868-0368

**Grade Level - 08**

**PARCC MATH 25th %ile vs 75th%ile**

This table presents the scale scores associated with students at the bottom (0th percentile), the 25th percentile, the 50th percentile, the 75th percentile and the top (99th percentile) of school's distribution.

Percentile	School Scale Score	State Scale Score
99th	773	850
75th	756	748
50th	736	726
25th	713	704
0th	695	650

	Scale Score Gap - School	Scale Score Gap - State
25th vs 75th Gap	43	44

## SCHOOL CLIMATE

HUNTERDON  
FRANKLIN TWP

### Length of School Day

This table presents the amount of time a school is in session for a typical student on a normal school day.

	School
2014-15	6 Hrs. 45 Mins.

### Student Suspension Rate

This table presents the percentage of students who were suspended one or more times during the school year.

	School
2014-15	1.7%

## State of New Jersey 2014-15

GRADE SPAN PK-08

19-1600-050  
FRANKLIN TOWNSHIP SCHOOL  
226 QUAKERTOWN ROAD  
QUAKERTOWN, NJ 08868-0368

### Instructional Time

This table presents the amount of time that a typical student is engaged in instructional activities under the supervision of a certified teacher.

2014-15	School
Full Time	6 Hrs. 25 Mins.
Shared Time	0 Hrs. 0 Mins.

### Student Expulsions

This table presents the number of students who were expelled from the school and district during the school year.

	School
2014-15	0

### Student to Staff Ratio

This table presents the count of students per faculty member or administrator in the school. All staff are counted in full-time equivalents.

2014-15	School
Faculty	10
Administrators	143

**SCHOOL PEER GROUP**  
**HUNTERDON**  
**FRANKLIN TWP**

**GRADE SPAN PK-08**

**19-1600-050**  
**FRANKLIN TOWNSHIP SCHOOL**  
**226 QUAKERTOWN ROAD**  
**QUAKERTOWN, NJ 08868-0368**

This table presents the list of peer schools in alphabetical order by county name that was created specifically for this school (highlighted in yellow). Peer schools are drawn from across the state and represent schools that have similar grade configurations and that are educating students of similar demographic characteristics, as measured by enrollment in Free/Reduced Lunch Programs, Limited English Proficiency or Special Education Programs.

<u>COUNTY NAME</u>	<u>DISTRICT NAME</u>	<u>SCHOOL NAME</u>	<u>CDS CODE</u>	<u>GRADES PAN</u>	<u>ECONOMICALLY DISADVANTAGED</u>	<u>ENGLISH LANGUAGE LEARNERS</u>	<u>SPECIAL EDUCATION</u>
BERGEN	CLOSTER BORO	TENAKILL MIDDLE SCHOOL	03-0930-060	05-08	0%	4.6%	12%
BERGEN	HARRINGTON PARK BORO	HARRINGTON PARK SCHOOL	03-2050-050	KG-08	0%	3.4%	11.8%
BERGEN	OAKLAND BORO	DISTRICT VALLEY MIDDLE SCHOOL	03-3760-080	06-08	6.5%	0.5%	13.4%
BERGEN	OLD TAPPAN BORO	CHARLES DEWOLF MIDDLE SCHOOL	03-3850-030	05-08	0.5%	2.1%	7.8%
BERGEN	RAMSEY BORO	ERIC S. SMITH MIDDLE SCHOOL	03-4310-055	06-08	4.7%	0.4%	13.2%
BERGEN	RUTHERFORD BORO	UNION SCHOOL	03-4600-100	04-08	4.6%	0.6%	9.1%
CHARTERS	PRINCETON CS	PRINCETON CHARTER SCHOOL	80-7540-930	KG-08	1.7%	0%	5.8%
CHARTERS	UNITY CS	UNITY CHARTER SCHOOL	80-8050-990	KG-08	8.4%	0%	18.8%
ESSEX	CALDWELL-WEST CALDWELL	GROVER CLEVELAND MIDDLE SCHOOL	13-0660-060	06-08	7.4%	0.2%	17.7%
HUNTERDON	FRANKLIN TWP	FRANKLIN TOWNSHIP SCHOOL	19-1600-050	PK-08	4.3%	0.7%	11.3%
HUNTERDON	HOLLAND TWP	HOLLAND TOWNSHIP ELEMENTARY SCHOOL	19-2220-060	PK-08	8.4%	0.5%	22.6%
HUNTERDON	READINGTON TWP	READINGTON MIDDLE SCHOOL	19-4350-050	06-08	6.7%	1%	17.2%
MERCER	ROBBINSVILLE TWP	POND ROAD MIDDLE SCHOOL	21-5510-040	04-08	3.6%	0.2%	11.3%
MIDDLESEX	MONROE TWP	MONROE TWP MIDDLE SCHOOL	23-3290-020	06-08	6.1%	0.2%	16.8%
MONMOUTH	BRIELLE BORO	BRIELLE ELEMENTARY SCHOOL	25-0560-020	PK-08	4.3%	0.5%	11.9%
MONMOUTH	MARLBORO TWP	MARLBORO MIDDLE SCHOOL	25-3030-050	06-08	4.3%	1.5%	14.2%
MONMOUTH	MILLSTONE TWP	MILLSTONE TOWNSHIP MIDDLE SCHOOL	25-3200-040	06-08	8%	0%	17.4%
MONMOUTH	OCEANPORT BORO	MAPLE PLACE MIDDLE SCHOOL	25-3830-030	05-08	8.3%	0.7%	18.8%
MORRIS	HANOVER TWP	MEMORIAL JUNIOR SCHOOL	27-2000-040	06-08	2.2%	1.2%	10.6%
MORRIS	MADISON BORO	MADISON JUNIOR SCHOOL	27-2870-100	06-08	7.3%	0.5%	16.2%
MORRIS	PEQUANNOCK TWP	PEQUANNOCK VALLEY SCHOOL	27-4080-080	06-08	6.8%	0.4%	15.7%
MORRIS	RANDOLPH TWP	RANDOLPH MIDDLE SCHOOL	27-4330-075	06-08	8%	1.4%	18.5%
PASSAIC	WAYNE TWP	SCHUYLER-COLFAX MIDDLE SCHOOL	31-5570-145	06-08	7%	0.2%	17.1%

**SCHOOL PEER GROUP**

**HUNTERDON**

**FRANKLIN TWP**

**GRADE SPAN PK-08**

**FRANKLIN TOWNSHIP SCHOOL**

**226 QUAKERTOWN ROAD**

**QUAKERTOWN, NJ 08868-0368**

SOMERSET	MONTGOMERY TWP	MONTGOMERY UPPER MIDDLE SCHOOL	35-3320-070	07-08	4.3%	0.7%	12%
SUSSEX	ANDOVER REG	LONG POND SCHOOL	37-0090-040	05-08	8.9%	0.4%	20.4%
SUSSEX	BYRAM TWP	BYRAM INTERMEDIATE SCHOOL	37-0640-030	05-08	8.8%	0.2%	18.6%
SUSSEX	GREEN TWP	GREEN HILLS SCHOOL	37-1800-060	KG-08	5.7%	0%	10.2%
UNION	CLARK TWP	CARL H. KUMPF SCHOOL	39-0850-035	06-08	6.3%	1%	13.8%
UNION	NEW PROVIDENCE BORO	NEW PROVIDENCE MIDDLE SCHOOL	39-3560-080	07-08	5.3%	0.3%	10%
WARREN	ALLAMUCHY TWP	ALLAMUCHY TOWNSHIP SCHOOL	41-0030-010	02-08	9.4%	0.6%	19.9%
WARREN	GREENWICH TWP	STEWARTSVILLE MIDDLE SCHOOL	41-1840-070	06-08	6.4%	0%	14.8%