

KT 113

New Jersey

Outdoors



Vol. 14, No. 11

Division of Fish and Game

May, 1964



State of New Jersey

Richard J. Hughes
Governor

Department of Conservation and Economic Development

Robert A. Roe
Commissioner

Division of Fish and Game

L. G. MacNamara
Director

Fish and Game Council

David H. Hart, Chairman
Cape May

Joseph L. Alampi,
Franklinville

Charles Canale,
Pleasantville

J. M. Charlesworth, Jr.,
Millville

Lillian B. Godown,
Trenton

William C. Lunsford, Jr.,
Wildwood Crest

George H. McCloskey,
Flanders

Ralph T. McNeel,
Hackettstown

Clarence A. Sheppard,
Pittstown

Fred Space,
Sussex

Fred H. Totten,
Ringoes

Law Enforcement

William P. Coffin,
Chief Conservation
Officer

Newman Mathis,
Chief—Coastal Patrol

Wildlife Management

George N. Alpaugh,
Chief of the Bureau

Oscar Sussman, D.V.M.,
Veterinary Consultant

Fisheries Management

Robert A. Hayford,
Chief of the Bureau

Public Relations

Jules W. Marron, Sr.,
Supervisor

New Jersey *Outdoors*

Published monthly by the State of New Jersey Division of Fish and Game
in the interest of conservation and restoration of wildlife and
the betterment of hunting and fishing in New Jersey.

In This Issue

An Old Friend Returns	<i>Chittenden and Smith</i>	2
Recreation	<i>Alden T. Cottrell</i>	10
Food and Cover	<i>Norris L. Weeks</i>	14
Trapper's Association	<i>Michael J. Pappa</i>	22
Trout Stocked in Spruce Run		24
International Convention		25
Council Highlights		26
Federation Convention		28
Violators Roundup		29
Fur, Fin and Campfire	<i>Jack Sords</i>	C-3

Cover—"Let's Go"—*Harry Grosch*

Fishermen launch their canoes in the Delaware River
to try the fabulous sport fishing for sea-run shad.

Vol. 14, No. 11

May, 1964

Publication Office: The Division of Fish and Game
P. O. Box 1809, Trenton, New Jersey 08625

Editor: R. Adams

Second class postage paid at Trenton, N. J., and additional mailing office.

Subscription: \$2.00 a year, by check or money order, payable to Division
of Fish and Game. Cash is forwarded at sender's risk. No stamps please.

Change of address: Should be reported directly to the Editor. Send both
old and new address. The Post Office will not forward copies unless
forwarding postage is provided by subscriber. Copies not delivered through
failure to send change of address six weeks in advance cannot be replaced.

All unsolicited material is sent to the magazine at the risk of the sender.
Permission granted to reprint with credit to *New Jersey Outdoors*.

An Old Friend Returns

The shad comes back to the Delaware
for the best fishing ever

By Mark Chittenden, Jr.
and Roland F. Smith

"What are they?" asked the puzzled fisherman as he stared into the water. Thousands of small, silvery fish rippling the surface of the water had attracted his attention. His bewilderment was understandable. Not for many years had such schools of fish been seen in the Delaware River. It was October, 1957, and the schools of fish were composed of young American shad migrating to the sea after spending the summer in the upper river. No one at that time could anticipate the tremendous flurry of excitement that would be caused when these fish returned in strength in the spring of 1961.

From the Sea

Like salmon, the shad is anadromous, a term applied to those fish which spend most of their lives in saltwater but return to

freshwater to spawn. The adult shad enter freshwater during the spring when the water temperature reaches about 55°F, a temperature normally reached in April in this latitude. Spawning begins when the water temperature reaches about 60°.

Spawning

In the Delaware River the major spawning grounds appear to be the entire stretch of river above the Water Gap. Some spawning probably occurs in major tributaries from the head of the bay north. Early records show that shad spawned in the main river as far down as Philadelphia. Spawning also occurs in brackish waters emptying into Delaware Bay. The shad's spawning act can easily be observed in the evening in quiet, flat stretches of the river. It can be

A shad takes to the air on the Delaware ➡



... An Old Friend

recognized by the S-shaped wake the fish make as they swim just under the surface of the water.

To the Sea

In general, the adults leave the river during July and August, al-

Young shad spend their first summer in fresh or brackish water, feeding primarily upon crustaceans and insects. During early fall the juveniles start to enter the sea and are believed to winter off the mid-Atlantic coast with the adults. Shad spend three to four years in



*Rod and reel
take of shad
from the
Delaware.
Three fish
an hour is
a good catch*

though in southern rivers most of them probably die after spawning. Adults from northern and middle Atlantic streams return to sea and migrate north to spend the summer and fall in the Gulf of Maine.

saltwater before returning to the river of their birth to complete the cycle.

Importance of Shad

The American shad, *Alosa sapidissima*, is native to the Atlantic



A small fleet of boats at a typical hot spot

coast from the St. Lawrence River to Florida, but they were successfully introduced in west coast rivers. Some of these fish came from our own Navesink River where they are now extinct. The shad's main economic importance is as a commercial fish, but its popularity as a sport fish is increasing by leaps and bounds. Available statistics clearly indicate how abundant shad once were in the Delaware River. The peak year of harvest was in 1896 when well over 19 million pounds were taken from the entire river system. Over 175,000 adult shad were taken above Trenton in that year. In 1950 only 22 were captured, eloquent testimony to the tremendous decline of these fish.

In 1960, however, fish were numerous enough to create considerable excitement among local sport fishermen. When 1961 and 1962 came around still more anglers were ready and waiting, and last year anglers travelled from New York City, Pittsburgh, and all points in between to try their luck. Pollution is believed to have been the major cause of the decline in the shad population in this river. Cleaner water conditions along the lower river in recent years have permitted this remarkable comeback.

Fishing

Spinning tackle is well suited to shad fishing. It should include a line of six- to eight-pound test to prevent the loss of lures on the



Some of the better waters for shad may be reached only by fishing from boat or canoe

... An Old Friend

rocky bottom; if the line is lighter, more lures will be lost. Whether trolling or casting, in a boat or wading, the lure should be kept moving at a slow speed near the bottom. Upstream trolling and cross-channel casting are also excellent methods.

Lures

Many different lures are used; they include flies, spinners, worms, cloth, and red beads. The favorites vary from locality to locality along the river. Most lures include a fairly heavy spoon or spinner, with a gold or silver background or a combination of both. The hooks on the lure should be strong. Shad have weak mouths. But, if they are hooked in the corner of the mouth, they are capable of easily straight-

ening out the weak hooks found on many lures, especially spinners. A new shad fisherman should expect to hook many more shad than he will land. Even the experts have a high hooking loss.

Boat anglers should remember that a hooked shad will spook when it sees the boat. Be prepared to give line to prevent this from happening. Another thing to remember is that often the strike may not be felt. Quite a few anglers have been surprised to see the line suddenly shooting off the reel with no previous warning jerk. Such fish are often better hooked, however, and more likely to be landed by the amateur.

Water to Fish

The type of water to fish depends on the progress of the run. While the fish are moving upstream, good

spots to try are just below obstructions, as shad often congregate in these areas to rest before continuing their journey upstream. Later in the season, good places to try are pools several feet deep, at the tail end of eddies where the shad tend to concentrate for spawning.

When to Fish

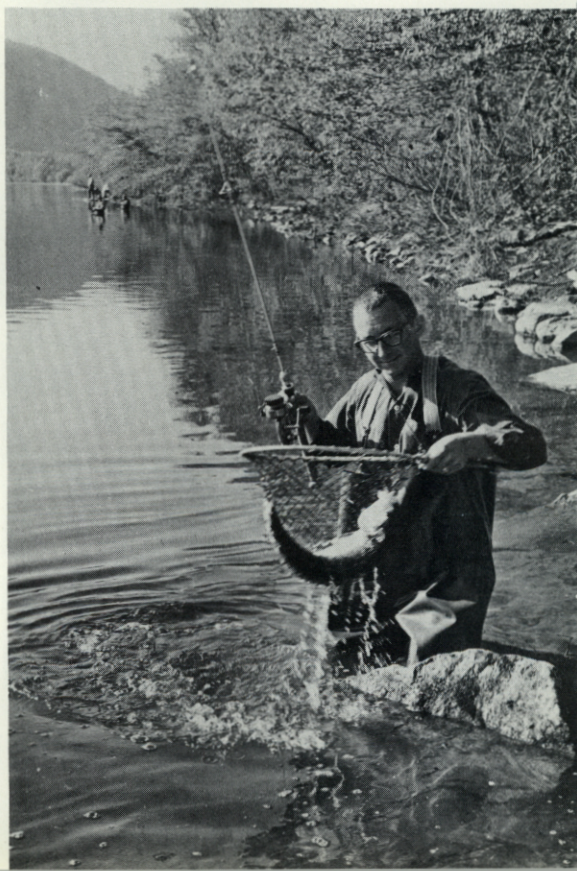
In the upper Delaware, the best fishing usually occurs in May, but shad are still present into July and can be caught. The best sport is to be had early in the run, when the shad are in top condition. As the season progresses, the spawning act and lack of food have lowered their physical condition and with it their fighting ability. The time when the fish appear varies slightly from year to year. But, the an-

gler should place himself on the alert around late April. The shad generally follow the spring run of alewives. In fact, many anglers get their spring training on these flashy speedsters—especially around Trenton.

Where to Fish

The best places along the river to try for shad are from Belvidere to Milford, Pennsylvania. However, good fishing can be had at least to Lambertville and probably as far down as Trenton. Shad are also taken well above Port Jervis. Information regarding the run and where the fish are at any given time can usually be gotten from outdoor columns, local taverns, hotels, motels, and sporting goods stores. If there is a good size run

Many anglers are highly successful while fishing from the shore or wading the shoals



... An Old Friend

this year, word will be around fast as the channels of communication are now well established.

The Future

The future of shad in the Delaware River depends on many variables, none of which are insurmountable, however. First, pollution must not be permitted to worsen and every effort must be made to continue the excellent progress that has been made in the

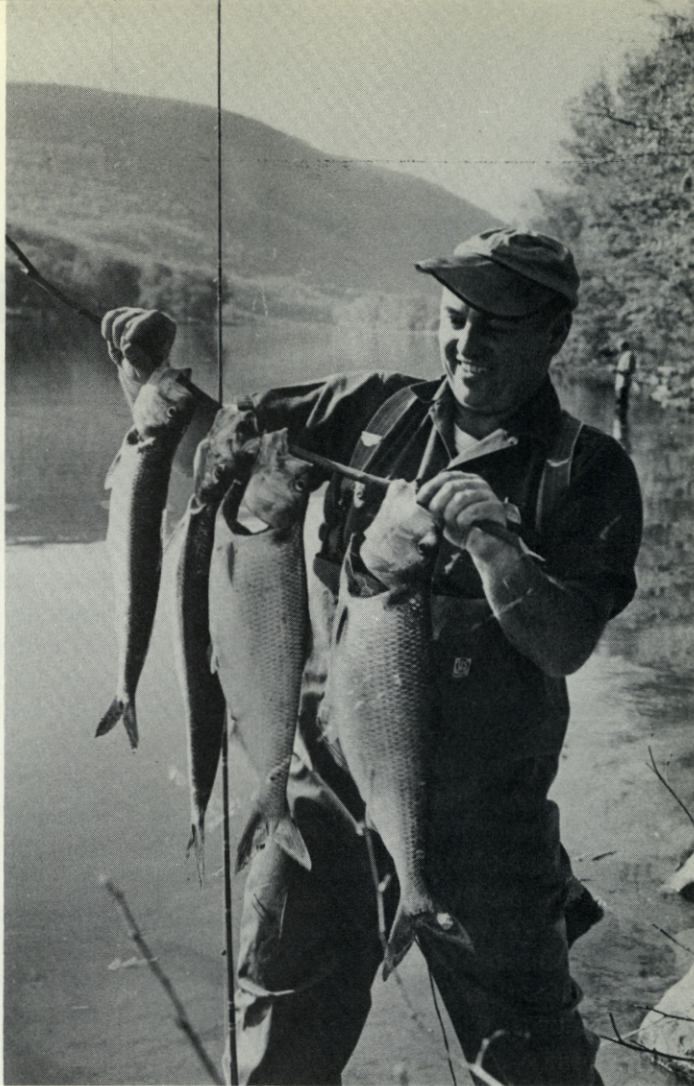
past decade. Secondly, the effects from Tocks Island Reservoir must be carefully assessed. Fishery biologists from Pennsylvania, New York, New Jersey, and the U.S. Fish and Wildlife Service have been actively studying the river since 1959. With the Delaware River Basin Commission now fully operational and the appointment of a biologist by the Fish and Wildlife Service to coordinate studies, the necessary work will be completed in time.

Studies to date suggest that



Fisheries biologists collecting shad data on the Delaware River. The author, left, and Jesse Malcolm of the Delaware River Basin Commission taking scale samples as fishermen observe

*"Anyone can catch shad!"
claims photographer
Harry Grosch, who
took the photographs
for this article*



Tocks Island Reservoir will inundate most of the present-day, main stem spawning areas. This means that spawning areas will need to be developed either above or below the reservoir. Most likely these "new" spawning areas will be below the reservoir. This will require a careful study into the temperature and volume of water that will need to be released from the reservoir at any given time. Consideration will also need to be given to other species of game fish that can be main-

tained, as well as the effects on the ecology of upper Delaware Bay. In the next few years sufficient engineering data will be available to permit a more detailed evaluation and appraisal of the problems. Access sites are being purchased and developed by all of the states concerned to insure adequate access to all portions of the river.

One thing our licensed fishermen can be assured of—shad are back and we aim to keep them coming back. #

State Forest and Park

Recreation

from a multiple use standpoint

by Alden T. Cottrell, State Forester

I welcome this opportunity to present to your organization some aspects of our forest and park development program and our recognition of the need for additional outdoor areas for all forms of recreation, including, of course, hunting and fishing.

Background

First, some background with respect to the development of our public forest and park system at the state level in New Jersey and present day philosophy in terms of the multiple use concept of this public land.

There is apparently no satisfactory figure for the acreage per thousand population that is needed for the general outdoor recreation of the types we are considering here; that is to say picnicking, camping, hiking, hunting, fishing, canoeing and other recreation of this type. We are, of course, excluding from consideration certain conventional forms of recreation such as golf, archery, trap shooting, etc., and limiting this discus-

sion to what may be termed "forest recreation." It is a fair assumption, however, that as our urban complex increases in New Jersey we will need public land areas for general recreation far in excess of that which we now own and administer.

With the establishment of the Forest-Park Reservation Commission shortly after the turn of the century, or nearly 60 years ago, New Jersey recognized the need for the establishment of public recreation areas by the very title of the Commission; namely, Forest-Park Reservation Commission.

Earliest Acquired

The earliest property acquired was the Bass River "Reserve" in Burlington County on which acquisition commenced in 1905. The use of the term "reserve" proved to be unfortunate both at the state and National level, as this term suggested the locking-up of resources rather than the conservation concept which means wise use. A more appropriate term and one which more nearly suggests the use of these properties is, of course, State Forests or National Forests.

Based on a paper delivered at the Sixth Annual Conservation Convention of the State Federation of Sportsmen's Clubs, Camp Washington, Long Valley, May 1963.

In 1907, acquisition began on the Stokes State Forest, in Sussex County, with an initial purchase of approximately 5,000 acres. This forest area was acquired in part during the administration of Governor Edward C. Stokes, and was named the Stokes State Forest.

After World War I, the state commenced the acquisition of state park areas and initially these were a slightly different type of area from our State Forests — usually smaller, closer to centers of population and more highly developed for a wider variety of recreational uses than our State Forests. Today, however, there is very little distinction between the two types of areas from the standpoint of general recreational development. For practical purposes State Forests and State Parks are one and the same thing, except that hunting is generally prohibited on State Parks.

Hunting and Fishing

The State Forest areas have always been open to hunting and fishing since the earliest days and the initial acquisition of this type of public holding. In fact, until the Division of Fish and Game began to acquire public hunting and fishing grounds, the State Forests were virtually the only public land area of any consequence at the State level open to public hunting.

In recent years there has developed a broader concept of the use of public lands to which the general term multiple use is applied. Simply

explained, this means that any public lands should be maintained and developed for as many public uses as possible, rather than for a single use.

Wharton Tract

In 1954 and 1955, the State acquired in two separate transactions for a total of \$3,000,000. The Estate of Joseph Wharton, commonly called the Wharton Tract, lying in Camden, Burlington and Atlantic Counties and including parts of seven municipalities within this area, making a tract of more than 95,000 acres, without doubt formerly the largest private holding in New Jersey in terms of acreage. Here lies an opportunity to put into practice the multiple use concept.

Multiple Use

Although the basic consideration in the state's purchase of this area was to insure a water supply in anticipation of the development of the lower Delaware Valley, this in no way prohibits or interferes with recreational use. The policy in the administration of this area recognizes the multiple use concept. We find, therefore, that a wide variety of interests can be served. There are several historic villages and towns within the Wharton Tract of interest in the preservation of the heritage of one of our most interesting industries; namely, the bog iron industry.

The Pine Barrens of southern New Jersey contain an unusual variety of flora of interest to botan-

Recreation

ists throughout the world. On the Wharton Tract there are several sections where native plants grow in profusion. These areas will be set apart as areas of particular botanical significance. There are several lakes on the Wharton Tract as well as sites where lakes can be developed. There is, therefore, a tremendous potential for recreational use in the way of swimming and boating. The streams on the tract, when cleared of debris, offer interesting trips for the canoeist. With the development of wildlife habitat through game food patches and other techniques, the supply of game can be increased for the hunter. The fisherman should be able to enjoy his sport in the lakes and streams. Picnicking, hiking, and other conventional forms of recreation can be enjoyed on this large area in public ownership. Forestry, can, and is being practiced on certain areas which are

not dedicated to a higher priority.

These multiple use features will not interfere with the use of the Tract for water supply.

If the final determination after research studies results in an on-surface reservoir for the source of water, a reservoir will afford an unusual opportunity for recreation. If, however, the water supply when developed is from a series of wells there will be no basic conflict between recreation and water supply.

Green Acres

In 1961 the public by referendum voted to approve the Green Acres bond issue of \$60,000,000. for the purpose of buying additional lands for public use. Forty million dollars, or two-thirds of the bond money is to be spent for acquisition, but not development of State lands for public recreation. Some of these funds are being spent to round out the purchase of interior exceptions in some of the existing forests and parks. Funds are also



If we feel that the public land areas will be inadequate for future needs, we should renew our efforts to acquire additional lands

New Jersey Outdoors

being used to acquire entirely new purchase units. The \$20,000,000. allocated to counties and municipalities on a 50 percent matching basis means actually \$40,000,000. will be spent to acquire land on a matching fund basis. The total land to be acquired, therefore, under this Green Acres Act will involve the expenditure of \$80,000,000. This should increase our total public lands substantially, but whether this will be adequate depends on numerous factors including, of course, how correct projections may be with respect to the increase in population in this area of the Northeast and the cost of land per acre.

Inroads

There are numerous factors that result in the conversion of substantial areas of wild land to other uses that are not always appreciated. Roads and highways, quite aside from urban development, take a heavy toll and will take more as our urban complex develops.

The Spread

We no longer build four-story brick factories in the center of the city. We now build one-story buildings surrounded by tremendous areas of lawns and open land with parking area to accommodate workers who no longer use public transportation to reach their employment.

The Garden State Parkway, for instance, is a strip of land 500 feet wide and approximately 175 miles

in length. This, therefore alone removed 11,000 acres from any other use except transportation.

Land Values

The development of high speed highways provides ready access to a highly industrialized section of the country and, therefore, land prices skyrocket which means we buy less and less acres with more and more money.

Cost-Benefit

In the early days of the acquisition of public lands in this state it was not unusual to acquire land at \$2. to \$5. an acre. In some areas on an acreage basis the cost of land today is virtually prohibitive on any kind of a cost-benefit ratio.

We are fortunate since the turn of the century to have acquired in State forests and Parks and the Public Fishing and Shooting Grounds, the two principal classes of land administered by the Department of Conservation and Economic Development, roughly 300,000 acres. Green Acres will add more, but until the funds have all been spent, we obviously do not know what this means in increased acreage—nor how much more we need. This suggests that if we feel that the public land areas will be inadequate for future needs, we should renew our efforts to acquire additional lands as rapidly as possible even if they lie dormant and undeveloped until such time as they are needed for public recreation. #

Food and Cover

Twelve Years of Farm Game Habitat Work

by Norris L. Weeks, *Leader*
Farm Game Development Project

Photographs by the Author and Paul D. McLain

Each year the New Jersey hunter witnesses the increasing depletion of natural hunting areas. With the mounting loss of these areas, it is necessary to develop and improve the wildlife potential of existing lands within our state. The New Jersey Farm Game Habitat Improvement Project is a state-wide program designed to provide more wildlife by improving the quality and quantity of food and cover available for use by wildlife.

This unit, administrated under the Bureau of Wildlife Management of the Division of Fish and Game and sponsored in part by the U. S. Fish and Wildlife Service under the Pittman-Robertson Act, was instituted in New Jersey in 1948. Its primary function is to co-operate with landowners, sportsmen's clubs, and other interested parties in improving wildlife habitat.

Decreased Habitat

Urbanization, poor farming practices, grazing, erosion, and the burning of woodlots have all contributed to the decrease of wildlife habitat within the State of New Jersey. Suburbanization, or the

trend toward country living, has done much to destroy and limit the amount of food and cover available to wildlife. According to the 1960 census, 88.6 percent of all New Jersey residents live in urban areas. New Jersey also has the highest population density of any state. This means that, not only have our desirable areas for wildlife diminished, but also hunting pressure is becoming more demanding on the areas remaining that are suitable for maintaining a satisfactory wildlife population.

In addition to this, the practice of "clean farming" has also contributed extensively to the decline of wildlife populations. Hedgerows have been removed, and additional land has been cleared that is, in some cases, submarginal and unfit for good farm use. The periodic burning of fencerows, hedgerows, woodlots, and submarginal land in general has also done much to destroy existing wildlife areas.

For Improvement

All this may paint a gloomy picture for the existence of a substantial wildlife population in the State of New Jersey, however this

situation can be greatly improved by following a practice of wise land use. Such areas as abandoned fields, fencerows, gullies, field borders, steep and eroding hillsides, rock outcroppings, and woodlots can be developed to support a good amount of wildlife if properly managed. All wildlife, regardless of the species and whether it wears fur or feathers, is a product of the soil. As such, it depends chiefly upon plants provided by natural means or those introduced artificially. This factor in the life cycle of wildlife can be controlled by man.

Management Plans

Requests by landowners and sportsmen's groups for assistance in managing wildlife areas have increased to the extent that the Division of Fish and Game can not provide sufficient equipment and personnel to develop private lands. The Farm Game Unit is, therefore, attempting to improve wildlife ha-

bitat within the state by providing a consulting service and supplying a limited amount of planting materials to those who request assistance.

The most important phase in developing and improving a wildlife area is recognizing the various wildlife h a b i t a t requirements which are lacking. Thus, the first step is to design a sound management plan. The land should be developed to support the most adaptable game species for the particular area in mind if a maximum natural population is to be maintained. The pattern of habitat components must also be considered when preparing a management plan.

Carrying Capacity

Since game animals have restricted areas in which they travel, food and cover requirements must be fulfilled within these areas or home ranges to enhance chances

Ideal food and cover for small game . . . autumn olive



... Food and Cover

of survival. Since some tracts are vast and barren of cover, the carrying capacity can be improved by providing the necessary cover through artificial seeding and cutting. This concept is the reason for the term "edge effect." When additional hedgerows and woodland clearings are created, a greater number of home ranges are made, and in turn, a wildlife population

the management plan are programs such as the planting of multiflora rose, various legumes, shrubs, and evergreens, and planting of mixtures of annuals. The cutting of hedgerows and woodland borders should also be included in a comprehensive, well designed plan.

Multiflora Rose

In these times, when the cost of material and labor in fencing are a genuine financial strain on the



Lespedeza bi-color and Lespedeza serecia provide good edge effect

can be increased due to the build-up in the carrying capacity of the land.

Once a plan has been designed, the necessary improvement and maintenance procedures can be scheduled and followed conveniently throughout the year. Included in

landowner, it has been found that multiflora rose sometimes provides a stocktight, permanent fence at a reasonable cost. Multiflora rose may be planted along existing wire fences, and within a period of four of five years under proper conditions, it will provide a living fence

Multiflora rose
yields an abundance
of fine winter feed



that requires little or no maintenance. This fence will occupy approximately six linear feet of space and provide excellent cover, food and travel lanes, as well as a good windbreak to prevent erosion.

There is one thing that should be said in regard to multiflora rose it will spread from seed. The seed is carried by birds in their droppings. Reproduction usually occurs in abandoned fields or other little used areas. This spreading is condemned by some landowners, but praised by others who are glad to get the extra cover. The plant is easily controlled, when it becomes misplaced, with the use of any of the good herbicides used either as a foliage or a basal spray. Multiflora rose is not a miracle plant, but should be given serious consideration in any wildlife management program.

Lespedeza Borders

Most wildlife species, being creatures of the edge, are greatly benefited by the installation of Les-

pedeza field borders. These may be planted along field edges adjacent to woodland where competition from the woodland species does not permit most legumes, grains, and other farm crops to succeed. This field border planting of a combination of *Lespedeza bi-color* and *Lespedeza serecia* does not detract from the amount of land where a profitable farm crop may be grown. The planting of Lespedeza will provide a usable edge for wildlife where an abundant supply of both food and cover is available.

Erosion Control

In addition to this, the Lespedeza, along with other food and cover plants such as autumn olive, tartarian honeysuckle, silky cornel, and virburnums, may be planted along contours to provide windbreaks for holding the soil on large eroding fields. These plantings become attractive to wildlife not only for the food which they provide, but also for nesting cover and travel lanes. Abandoned fields and



Evergreens are valuable for winter cover and a cash crop

... Food and Cover

eroded hillsides that are no longer commercially productive can be planted with evergreens which will hold the soil. They also provide excellent cover for wildlife. After a period of 10 to 12 years, some of these trees may be harvested for the Christmas tree market to provide a source of winter income to the landowner.

Food Patches

In areas where suitable food is the limiting factor, the New Jersey Food Patch Mixture consisting of 11 different cereals may be installed in small, quarter-acre plots. These food areas can be planted on odd corners of fields or other unused areas adjacent to good cover, and they will usually provide an abundant supply of top quality

food throughout the winter months. A thoroughly prepared seed bed is required for the installation of these food areas, and they should be fertilized and limed as needed.

Hedgerows

Hedgerow management is another important aspect in the field of wildlife management. Hedgerows of large trees have usually outgrown their usefulness to wildlife by shading out beneficial food and cover shrubs and by providing little or no accessible food and cover of their own. The larger trees also lower the yield of adjacent crops through shading and root competition. Through proper management these hedgerows can be made useful to the landowner as well as to wildlife. This management is accomplished by cutting the trees and piling the resulting

brush within the hedgerow. The suitable portion of the tree may be used or sold for fire wood. The brush rows created by this operation provide immediate cover and a good supply of food for rabbits during the winter months. This management procedure will also release the more desirable plants and shrubs that will provide food and protective ground cover for small game.

Borders

The cutting of woodland borders is similarly beneficial in that it provides good cover while it eliminates the shading and root competition with adjacent crops. To carry out this desirable management practice, the Farm Game Unit has cut, for management pur-

poses, more than 40 miles of hedgerow, and it has cleared more than 50 acres of woodland border during the past 12 years with the use of saws and axes. Gullies, stream banks, and pond edges also afford excellent opportunities to carry out useful habitat improvement practices to provide better environment for the various wildlife species. A shrub and tree border consisting of plants suited to local conditions may be planted on these areas. Evergreens, in most cases, should not be planted closer than 25 feet to the water. This 25-foot area could well be planted to clumps of low growing shrubs of varieties that provide both beauty and food and cover for wildlife.

To further improve wildlife ha-



Hedgerow management is a useful tool in habitat development

... Food and Cover

bitat in the State of New Jersey, the Farm Game Unit is now cooperating with more than 300 different sportsmen's clubs and landowners annually. During the past 12 years, the Fish and Game Division has distributed more than 4,000,000 food and cover seedlings, the bulk of which have been planted by active sportsmen and landowners on privately owned land which is open to the public. A small percentage of this total has been planted on state-owned properties

pedeza serecia and *Lespedeza bicolor*. More than 400 acres of perennials such as burnet grass, birds-foot trefoil, pasture mix, and several varieties of clover have been planted to improve food and cover for rabbits and other wildlife species.

For Deer

The unit has also planted more than 4,500 acres of annual seedings that provide food for deer as well as for small game. Of this total, approximately 1,200 acres have been planted with New Jersey Food Patch Mixtures No. 1 and No.



*Testimony to
the value of
a well-managed
hedgerow*

by project personnel. In addition to this, the Farm Game Unit has installed almost 400,000 linear feet of field borders consisting of *Les-*

2 in quarter-acre plots for utilization by small game species. The remaining 3,300 acres was planted with either rye, soybeans, field

peas, or buckwheat for utilization by deer while the matured seed of these plants also provide a good supply of food for pheasants and quail. These plantings, in order to provide the maximum yield, have required the application of 900 tons of fertilizer and approximately

are of tremendous importance due to the fact that the Farm Game Habitat Improvement Project is limited to available time, funds, personnel, and equipment.

You as a club member, sportsman, or landowner can also cooperate in this activity to perpetuate

*Food patch
mix provides
food during
winter months*



1,500 tons of ground limestone. More than 140 tons of seed were required to plant this acreage.

Sportsmen and Landowners

In addition to the work previously outlined that was carried out by project personnel, the Farm Game Unit has supplied more than 125 tons of both annual and perennial seed to sportsmen's groups and private landowners who install their own plantings with privately owned equipment. These plantings

the sport of hunting through a program of wise land use and wildlife habitat improvement. The Farm Game Unit under the Bureau of Wildlife Management, Division of Fish and Game, provides information and technical assistance to those who desire to improve wildlife habitat. Each year more and more people are taking part in habitat improvement programs to better our hunting potential as we know it today. #

N. J. Trapper's Association

By Michael J. Pappa

Trapping, like hunting and fishing, has many followers in New Jersey. Today trapping is more of a sport than a profitable enterprise. There are few trappers in this day and age that can make a living out of the game. On the other hand, trapping has some monetary return which cannot be had from fishing or hunting, but

after trappers were forced to make a stand against the anti-trap groups, who were proposing legislation to take away the very tools of our trade, the steel trap. The national organization was responsible for forming state associations including our own in New Jersey.

The New Jersey Trapper's Association has tried to work closely



*The author,
Michael J. Pappa,
at his trapline cabin*

the reward is small compared to the time, effort, and expense incurred by the trapper.

The modern trapper of today has found it is to his advantage, as have other groups, to consolidate his beliefs through a central organization. The National Trapper's Association of America was formed

with the Division of Fish and Game to update trapping laws, and bring about a better understanding among trappers, sportsmen, and farmers. Some of our accomplishments have been earlier and extended seasons and the proposed fur buyers' license. Registered fur buyers reporting annual purchases

would help the Bureau of Wildlife Management evaluate the furbearer crop, market prices, and plan future seasons. The trapper harvests fur-bearers in areas where they are doing damage, thus relieving the Division of Fish and Game of the time and expense involved in live trapping and transporting these pests to other locations.

The trapper associations are not only concerned with trapping but also with other fields which are related to the outdoors and conservation. Our national association was one of the forerunners in proposed federal legislation to check the use of pesticides. Many of our western state associations have been fighting continuously against the use of 1080 poison used for exterminating predators and anything else that happens to come along.

The New Jersey Trappers' Association has many fine social activities throughout the year. A tour through New York City fur houses enables the trapper to see what happens from the time a pelt leaves his hands until it adorns mylady. Everyone looks forward to the spring and fall meetings which are usually held at Space's Farm, Beemerville, Sussex County. The morning business meeting is well attended by Division of Fish and Game biologists, state trappers, and conservation officers. It is at this time that we discuss prior and future trapping legislation and plan the coming season.

Some huge tales cross the table at lunch time. As the fisherman, the trapper enjoys telling of the one that got away or the sly old red fox that has been digging his traps.

The afternoon is taken up by guest speakers. Many professional trappers come from out of state and travel great distances to attend the meetings. Each of these men is a master in his own field and demonstrates his own particular trapping techniques. Everyone enjoys the displays of guns, old and new traps, and especially the National Association's collection of North American furbearers. The trappers who want to purchase their needs for the coming season can do so from the variety of dealers that attend the affair.

Most members look forward to the end of the day when prizes consisting of traps, lures, baits, literature, and other equipment are given away to lucky members. These prizes are donated to the association by generous trapping supply dealers. The day is completed by a grand tour of Mr. Space's mink ranch and wild animal farm. The spring meeting for this year will be held at Space's Farm on Sunday, May 3, 1964.



Anyone interested in learning more about the association should write to: New Jersey Trapper's Association, R.D. 2, Box 318, Newton, New Jersey.

Trout Stocked in Spruce Run

The tremendous potential of Spruce Run Reservoir as a site for recreational fishing came a step closer to reality with the recent stocking of over 5,000 kamloops trout fingerlings by the Division of Fish and Game of the New Jersey Department of Conservation and Economic Development.

The full potential of the new reservoir will result from unified and cooperative planning among the Department's divisions of Water Policy and Supply, Resource Development, and Fish and Game.

Development of the Spruce Run fishery is based on the recommendations of fisheries biologists. It will be several years before it achieves its maximum potential. In order to allow the young trout an optimum chance to grow, the Fish and Game Council decided not to stock catchable size fish in the reservoir this spring.

The reservoir will open for fishing starting with the trout season of 1965. By that time it is expected that the rainbow trout fingerlings stocked in the fall of 1963 and the kamloops of early 1964 will have attained excellent size.

The large body of water and the lack of competition from other species should provide ideal growing conditions. Alewife herring will be stocked this spring for forage. It is hoped that spawning runs of trout may become established in some of the tributaries. Stocking of additional trout and

other species will be undertaken when the Spruce Run experience has been analyzed.

Kamloops, also known as Donaldson trout, were developed from a deep-bodied strain of rainbows. They are reputedly capable of attaining considerable growth and withstanding a wide range of water conditions.

Dr. Lauren R. Donaldson of the College of Fisheries of the University of Washington in Seattle used selective breeding techniques developed in New Jersey by Charles O. Hayford, retired Chief of Fisheries Management and Dr. George C. Embody of Cornell University. Television newscaster Chet Huntley, now a New Jersey resident, studied under Professor Donaldson. When he moved to the Garden State he interested former Fish and Game Councilman Charles Cane in bringing the fish to New Jersey.

The Charles O. Hayford State Fish Hatchery in Hackettstown received kamloops eggs from the State of Washington in March, 1963. The eggs hatched soon after.

Hatchery Superintendent Robert Williams says that the largest kamloops, which are being held for breeding stock, exceeded the growth of rainbows born two to three months earlier. The fish stocked averaged 3.3 inches, with a range of 2.4 to 4.7 inches.

Each of the 5,061 kamloops had its left pelvic fin clipped. This will

enable fishermen and biologists to distinguish them from the regular run of rainbows which are otherwise similar. Fisheries Biologist Kenneth Compton says that after the reservoir opens, anglers will be asked to report kamloops catches to the state Fisheries Laboratory in Lebanon so that facts about the growth rate may be determined.

Oxygen content and temperature of the water in the Spruce Run Reservoir were checked before the fish were put in. Adequate oxygen was present by the outlet tower where the half-full reservoir is already 40 feet deep. Temperature, however, was only 34 degrees due to the ice cover, and it was decided to plant the fish in the fast-running

tributaries where water was 40 degrees. Water in the distribution truck was gradually tempered with stream water until it reached stream temperature so that the fish did not undergo too sudden a change.

There are reports from the west coast of kamloops attaining sizes of forty pounds or better. It is as yet uncertain how they will adjust to New Jersey waters. If their introduction proves successful, stocking of kamloops in other suitable waters will be considered. This experiment, if successful, and the opening of fishing in the new reservoir next year will greatly enhance New Jersey fishing opportunities. #

International Convention In New Jersey

The International Association of Game, Fish, and Conservation Commissioners and the American Fisheries Society will hold their annual conventions in Atlantic City this fall.

In announcing plans for the conventions, Commissioner Robert A. Roe of the Department of Conservation and Economic Development said, "I am very pleased that this outstanding group of conservation administrators and scientists chose to come to New Jersey. Their visit will be especially noteworthy because of our state's Tercentenary celebration."

Delegates are expected from all 50 states, most Canadian provinces, and other western hemisphere nations. Both conventions will be held in the Chalfonte-Haddon Hall Hotel, the Fisheries Society September 14-16 and the Conservation Commissioners September 16-18.

George N. Alpaugh, Chief of the Bureau of Wildlife Management of the Division of Fish and Game, is Program Chairman of the Commissioners' convention. He is also coordinating arrangements for both conventions under the direction of Fish and Game Director Lester G. MacNamara.

Robert A. Hayford, Chief of the Bureau of Fisheries Management is responsible for local arrangements for the Fisheries Society. Dr. Roland F. Smith, former Assistant Chief now with the Bureau of Commercial Fisheries of the U. S. Department of the Interior, is Program Chairman.

Scientific papers and discussions will cover a wide range of topics, Chief Alpaugh says. Among those in preparation are: the role of game and fish agencies in outdoor education; pollution and fish kill problems; areas of conflict between wildlife and man's interests; and the controversy over pesticides in relation to fish and wildlife.

Delegates also will get a first-hand look at New Jersey's achievements in development of coastal marshlands as wildlife habitat and the Garden State's exceptional salt water fishing. They will enjoy celebrations of the New Jersey Tercentenary and other attractions for which the New Jersey Coast is famous. #

Council Highlights

February Meeting

The open session of the regular monthly meeting of the Fish and Game Council was held in Trenton on February 11. In addition to the Council members and Division personnel present the following persons attended: Roy Williams, Edmund Schuler, John Russack, Robert Vreeland, and Edward Jackson.

Commercial Fishing

The Council resumed its discussion on illegal striped bass netting and was very desirous of using every means possible to discourage these illegal operations. Revocation of licenses for convictions was suggested as a deterrent. However the question was raised of whether the Council definitely had this power.

The following motion of Councilman McCloskey, seconded by Councilman Alampi, was passed: That any violators of the three-mile statute pertaining to striped bass netting, and the two-mile limit pertaining to other commercial fishing, be caused to appear before the Council to show cause why his commercial fishing license should not be revoked.

The Council further directed that in the meantime, Deputy Attorney General Remo Croce be contacted for an immediate interpretation of the Council's powers and authority along *these lines*. Pending receipt of this information, licenses are to be issued for two food fish applications being held in the Trenton office, both of which owners have been recently convicted for violating the fish and game laws. If the opinion is favorable to the Council, the owners of the vessels, who have been convicted twice within seven years, will be notified to appear before the Council and show cause why their licenses should not be revoked.

The Council directed that no vessel may commence to fish legally until its license has been issued and has been received by the licensee. Notice to this effect is to be sent to all persons who have obtained menhaden or food fish licenses in the past in order that they be apprised of this change in policy and the need for the license to be on the vessel before fishing operations commence.

License Revocation Appeals

The Council considered the written request of an appellant for the restoration of his license privileges which had been revoked following conviction for two offenses of fishing for trout in closed waters. After careful deliberation the Council passed a motion denying the request.

A second appellant appeared before the Council to request the

restoration of his hunting license privileges which had been revoked following conviction for two offenses of the fish and game laws.

After considering the man's appeal, the Council passed a motion restoring his license privileges but directed that he be cautioned that, should he be convicted of any violations in the future, his license will be revoked and the revocation will be sustained.

Correspondence received concerning ice fishing regulations was postponed until the next meeting of the Council.

Federation Resolutions

Several resolutions submitted by the State Federation of Sportsmen's Clubs were considered by the Council and action taken as follows:

Resolution to permit hunting of waterfowl on Sunday—The Council passed a motion favoring the recommendation of the Federation. It was the suggestion of the Council that since time is short, legislation to affect such a change should emanate from the Federation.

Resolution disapproving baiting of deer—The Council was in favor of a movement to prohibit the baiting of deer. Prior to the next meeting of the Council Chief Coffin will investigate the statutes and determine whether this can be handled by code or whether legislation will be necessary.

Resolution protesting the fees charged surf anglers who fish at Island Beach State Park—Inasmuch as this matter concerns another division within the Department of Conservation and Economic Development, Councilman Godown was chosen to contact personally Commissioner Roe to discuss the subject with him.

Resolution urging that all state tax accruing from the sale of gasoline for marine purposes be used solely for conservation purposes in New Jersey—Councilman Godown is to discuss this matter with Commissioner Roe since it involves other branches of State Government.

Resolution recommending 7:00 a.m. starting time for hunting—The Council directed that the Federation be advised that it is the opinion of the Council that the regulation setting starting time as sunrise, adequately covers this situation.

Resolution requesting that the Federation be informed of voting action of each Councilman within five days of a meeting—It was the consensus of the Council members that this is the duty of the liaison of the Federation who is present at the open session of the Council meeting. But, as far as the closed session is concerned, action taken is generally unanimous. When any Councilman has a special interest regarding his vote on a matter that may be controversial, it is recorded

... Council Highlights

and the information can be given upon request. It would also be impossible to comply with the time limit of five days since the minutes are not prepared and received by the Council within that length of time.

Trout Stocking

The proposed trout stocking program for 1964 which was submitted to the Council by mail was unanimously approved and adopted.

Edward Jackson requested that the Council give consideration to stocking trout in Pompton Lakes since this procedure has been followed in Budd Lake. Mr. Jackson was assured that if fish were available, this would be done.

Raccoon Season

Councilman Space reported that coonhunters had requested that consideration be given to an extension of the raccoon hunting season because of the past dry season when the woods were closed.

The Council passed a motion directing that a news release be issued to inform the public that this would require a proclamation and it is now too late in the season to effect such an extension.

Next Meeting

The next regular meeting of the Council was scheduled to be held at the State Fish Hatchery in Hackettstown.

Special Meeting Suggested

Due to the inclement weather and hazardous driving conditions, the Council adjourned and postponed other items on the agenda until the next meeting. Councilman Godown expressed the opinion that, since no meeting was held in January and numerous matters required attention, it may be necessary to hold a special meeting of the Council prior to the next regular meeting. Councilman Godown was to confer with Director MacNamara concerning the need for such a meeting. #

New Jersey State Federation of Sportsmen's Clubs

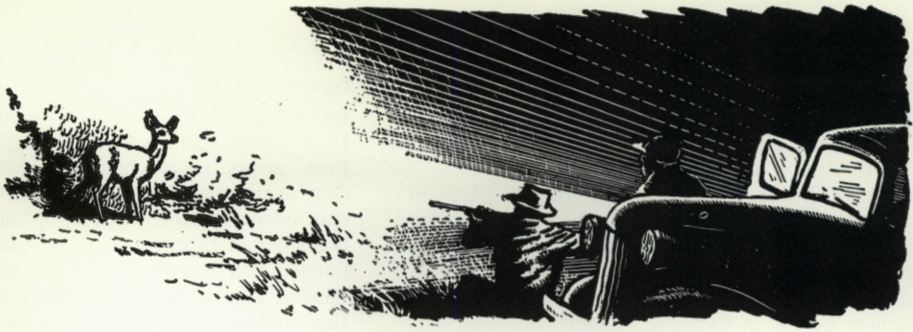
Seventh Annual Conservation Convention

Echo Hill Camp — Stanton Station — Near Flemington

May 23 and 24

Theme: 1664 — 1964

Quo — Vadis



Violators Roundup

<i>Defendant</i>	<i>Offense</i>	<i>Penalty</i>
Durward L. Dutton, Greendel Rd., Box 659 R.D. #1, Newton	Uncased gun in vehicle	100 Jail
Frank DeMato, 547 Cumberland St., Westfield	Deer closed season	100
John Garbutt, 104-21st St., Brigantine	Illegal missile	100
Philip Hand, Mays Landing Rd., Pomona	Illegal poss. deer	100
Diamond Annuzzi, 85 Shepard Ave., E. Orange	Firearm over 3 shells	20
William Bobo, School Rd., Hibernia	Hunt before hours—pheas.	20
Frank Lowry, 7 White Birch Trail, Denville	Hunt before hours—pheas.	20
Gilbert Dodson, 17 Pool Ave., W. Milford	Hunt before hours—pheas.	20
Raymond DePalma, 163 Myrtle Ave., Irvington	Illegal missile	100
Raymond Digraci, 75 Berkeley Ave., Clifton	Hunt before hours—pheas.	20
Michael Whritemore, 58 Decker Rd., Butler	Hunt before hours—pheas.	20
Daniel Toroforiello, Main St., Manahawkin	Hunt before hours—pheas.	20
Richard Flubacker, 111 E. 8th St., Clifton	Hunt before hours	20
Harold Howell, 605 Bayview Dr., Absecon	Loaded gun in vehicle	20
James C. Reggle, Rt. 206, Vincentown	Loaded gun in vehicle	20
Edmund C. DiPaolo, 13 Brookrun Dr., Mt. Holly	Failure to produce license	20
Raymond Straway, 183 Houses Monroe Rd., Sparta	Short horned buck poss.	100
Daniel C. Haines, 16 Cornell Rd., Glassboro	Uncased firearm	100
Daniel C. Haines, 16 Cornell Rd., Glassboro	Loaded gun in car	20
Jerry DeGarmo, 722 Woodland Ave., Mantua	Uncased gun	100
Jerry DeGarmo, 722 Woodland Ave., Mantua	Loaded gun in car	20
Paul Simpkins, 904 E. Main St., Millville	Loaded gun in car	20
Robert Jankowicz, 406 S. Clinton Ave., Trenton	Loaded gun in car	20
Way C. Mathuse, R.D., Titusville	Uncased gun	100
Angelo Platoni, 142 Congress St., Jersey City	Brant from motor boat	20
Joseph H. Eisele, Jr., 2206 Cornwall Ave., Northfield	1 Black Duck over limit	20
Joseph H. Eisele, Jr., 2206 Cornwall Ave., Northfield	1 Black Duck over limit	20
Joseph A. Fortunato, 617 Burroughs Ave., Northfield	1 Black Duck over limit	20
Lawrence R. Winchell, Jr., 2217 Cornwall Ave., Northfield	1 Black Duck over limit	20
Lawrence R. Winchell, Jr., 2217 Cornwall Ave., Northfield	Gun over 3 shells	20
Alfred C. Potts, Poke Hill Rd., P.O. 332, Cookstown	Hunt without license	20
Charles Clewes, Box 310 R.D. #2, Jackson	Uncased weapon	100
Charles Clewes, Box 310 R.D. #2, Jackson	Loaded gun in car	20
William Webb, Jr., Pleasant Valley, Whitings	Uncased weapon	100
Salvatore S. Scarpulla, 1 Gerald Ave., Lakehurst	Uncased weapon	100
Ralph Bartolomeo, 58 Ave. C., Newark	Hunt before hours—pheas.	20
Alfred S. Potts, Box 332, Cookstown	Uncased gun	100

. . . Violators Roundup

<i>Defendant</i>	<i>Offense</i>	<i>Penalty</i>
Alfred S. Potts, Box 332, Cookstown	Loaded gun in car	20
Wm. A. Bickhardt, 76 Salem Hill Rd., Howell Twp.	Poss. pheas. before hours	20
Wm. H. Carson, 111 Carlisle Ave., Yardville	Poss. pheas. before hours	20
Stephen J. Burns, 110 Meadow Pt. Rd., Pt. Pleasant	Gun over 3 shells	20
Richard Matthews, Hornerstown Rd., Cream Ridge	Gun over 3 shells	20
Frank Kish, 404 Alden Rd., Avenel	Loaded gun in car	20
Peter Hoblit, 741 River Ave., Lakewood	Loaded gun in car	20
Robert Hoblit, 288B Graystone Rd., Old Bridge	Loaded gun in car	20
Kenneth Garris, 24 Essex St., Dover	Hunt before hours	20
Jim Stanlick, Longwood Rd., Bershire Valley	Discharge gun across highway	20
Thomas K. Fucci, 16 Alloway Rd., Parsippany	Hunt before hours	20
Glenmore Bloss, 7 Northfield Rd., Lake Parsippany	Hunt before hours	20
John Manella, 135 Wilson St., Boonton	Hunt before hours	20
Sam Pagliaro, 289 Jefferson Trail, Hopatcong	Hunt before hours	20
James J. Atno, Box 294, Lakeside Blvd. Landing	Hunt before hours	20
James J. Atno, Box 294, Lakeside Blvd. Landing	Discharge gun across highway	20
Paul Fleury, Beverly Hill Estates, Franklin	Loaded gun in car	20
Salvatore Dave, Jr., 62 Liberty St., Lodi	Hunt before hours	20
Henry Bernascone, 237 Martha Ave., E. Paterson	Hunt before hours	20
Walter M. Oakes, Macopin Rd., West Milford	Loaded gun in car	20
Clifford Jenkins, 34 Sheridan Ave., Paterson	Failure to report deer 24 hours	100
Samuel Caltabiano, Box 180 R.D., Swedesboro	Hunt from vehicle	20 Appeal
Thomas Brancato, Tuckahoe Rd., Franklinville	Hunt before hours	20
Nicholas Berezowsky, Star Cross Rd., Williamstown	Hunt before hours	20
Robert Kocher, R.D., Washington	Hunt closed season	20
Lowell Kocher, R.D., Washington	Hunt closed season	20
Ernest Horwath, 16 Dod Pl., Hillside	Uncased gun	100
Thomas R. McNiff, 48 Colony Rd., Edgewater	Hunt without license	20
Roland V. Greeley, 124 5th St., Newark	Hunt without license	20
Russell Rogers, Main St., Port Morris	Refuse to show license	20
Roland F. Hoffman, R.D., Washington	Loaded gun in auto	20
William Morgan, R.D., Oxford	Loaded gun in auto	20
Daniel Long, 721 Brookside Ave., Toms River	Loaded gun in car	20 Appeal
Daniel Long, 721 Brookside Ave., Toms River	Poss. rifle with 22 bullets	100 Appeal
Daniel Long, 721 Brookside Ave., Toms River	Hunt without license	20 Appeal
Daniel Long, 721 Brookside Ave., Toms River	Hunt with rifle	100 Appeal
Daniel Long, 721 Brookside Ave., Toms River	Uncased gun	100 Appeal
Daniel Long, 721 Brookside Ave., Toms River	Deer at night	100 Appeal
Joseph M. Aretino, 3046 New Central Ave., Jackson	Poss. rifle with 22 bullets	100 Appeal
Joseph M. Aretino, 3046 New Central Ave., Jackson	Loaded gun in car	20 Appeal
Joseph M. Aretino, 3046 New Central Ave., Jackson	Hunt without license	20 Appeal
Joseph M. Aretino, 3046 New Central Ave., Jackson	Hunt with rifle	100 Appeal
Joseph M. Aretino, 3046 New Central Ave., Jackson	Deer at night	100 Appeal
Joseph M. Aretino, 3046 New Central Ave., Jackson	Uncased gun	100 Appeal
Salvatore Domenico, 27 Heidl Ave., W. Long Branch	Deer at night	100
Salvatore Domenico, 27 Heidl Ave., W. Long Branch	Attempt to take deer closed season	100
Salvatore Domenico, 27 Heidl Ave., W. Long Branch	Hunt on Sunday	20
Salvatore Domenico, 27 Heidl Ave., W. Long Branch	Hunt with lights	20
Charles Sylvester, 417 Amity St., Elizabeth	Loaded gun in auto	20
Charles Sylvester, 417 Amity St., Elizabeth	Shoot at pheas. closed season	20

<i>Defendant</i>	<i>Offense</i>	<i>Penalty</i>
Willie Lee Oliver, Box 415 Manassa Rd., Farmingdale	Hunt without license	20
Alex Kurowski, R.D. #2, Lakewood	Kill quail before 9 a.m.	20
James Fish, 45 Pilgrim Pathway, Ocean Grove	Kill pheas. before 9 a.m.	20
Arthur Lee Gordy, 122 Shadelyn Ave., Pleasantville	Striped bass under 18"	20
John Brower, R.D. 2 6th Ave., Absecon	Striped bass under 18"	20
Anderw Sichort, Black Horse Pike, Blackwood	Poss. parts deer	100
Ronald Sperofera, Kingston Rd., Parsippany	Gun over 3 shells	20
Ronald Sperofera, Kingston Rd., Parsippany	Fail to display tag	5
Edmund Persson, 5 Gordon Rd., Wharton	Hunt before hours	20
Walter S. Yaros, R.D., Wharton	Hunt before hours	20
Thomas J. Stednick, Homestead Rd., Lake Hopatcong	Hunt before hours	20
Chester Jones, R.D., Wharton	Hunt before hours	20
Harold Robinson, 7 Pine St., Woodbury	Firearm more 3 shells	20
Robert A. Holding, 8 Acorn Dr., Bridgeton	Firearm more 3 shells	20
Paul W. Friedhafer, 613 Main St., Egg Harbor	Firearm loaded in auto	20
George McDade, 312 Ivans Ave., McKee City	Firearm more 3 shells	20
John A. Zeller, 415 Buffalo Ave., Egg Harbor	Firearm loaded in auto	20
Edward Jackson, 233 Guard Pl., Pleasantville	Uncased weapon	20
William Tullo, Jr., 43 Mereline Ave., W. Paterson	Illegal missile	100
Richard Broderick, 468 Cliftwood, Cliftwood Be.	Loaded firearm in auto	20
Jack F. Hindermeyer, Sawmill Rd., Cedarville	Hunt deer out of season	100
Jack F. Hindermeyer, Sawmill Rd., Cedarville	Hunting license not displayed when asked	20
Edmund F. Courtright, R.D.2, Shirley	Hunt illegal hours	20
Edmund F. Courtright, R.D.2, Shirley	Tag not displayed	5
Harry H. Fussell, Wills Pl., Vineland	Hunt illegal hours	20
John Jones, 333 Simpson Ave., Ocean City	Firearm more 3 shells	20
Thaddeus Janowski, 2850 Tuckahoe Rd., Camden	Firearm more 3 shells	20
Thomas D. Mature, 739 First Rd., Hammonton	Unlawful poss. buck shot	100
Thomas D. Mature, 739 First Rd., Hammonton	Gun in woods—Sunday	20
Frank Kugyela, 392 Grace Ave., Garfield	Rifle to hunt	20
William Titsworth, Box 80, Branchville	Loaded firearm in vehicle	20
Raymond Floriano, 585 N. Delsea Dr., Vineland	Threaten Dep. C. O.	100
Raymond Floriano, 585 N. Delsea Dr., Vineland	Firearm in woods—Sunday	20
Siris Bellogamba, 8818 23rd Ave., Brooklyn, N. Y.	Poss. rifle slug in fields	100
Siris Bellogamba, 8818 23rd Ave., Brooklyn, N. Y.	Hunt no license	20
Joseph Szwazsliski, 233 Avenue E, Bayonne	Hunting license—not entitled	20
Norman Pietrucha, 63 Brill St., Newark	Hunt before hours	20
Dennis Buckmaries, 136 Prospect Ave., Bayonne	Hunt before hours	20
Earl H. Weigel, 31 Orchard St., Somerville	Poss. firearm capable hold more than 3 shells	20
John Frimmel, 331 Avenue E., Bayonne	Hunt before hours	20
Danny Innamorato, 693 So. 191st St., Newark	Hunt before hours	20
Henry Garofala, Jr., 145 Oakland Ave., Lyndhurst	Hunt before hours	20
Frank A. Morminello, 500 So. Pine Ave., So. Amboy	Hunt before hours	20
Joseph Corsentino, 10 Lowden St., Elizabeth	Hunt closed season before 9 a.m. opening day	20
Paul Timler, 1184 Magie Ave., Elizabeth	Hunt closed season before 9 a.m. opening day	20
Charles Cunningham, 58 Clay Born St., Iselin	Hunt closed season before 9 a.m. opening day	20
Joseph Cutropia, 1527 54th St., Brooklyn, N. Y.	Poss. illegal missile	100
Joseph Cutropia, 1527 54th St., Brooklyn, N. Y.	Firearm more 3 shells	20
Nicholas DeMattino, 111 Chamber St., So. Plainfield	Poss. shotgun—within limits State refuge	50

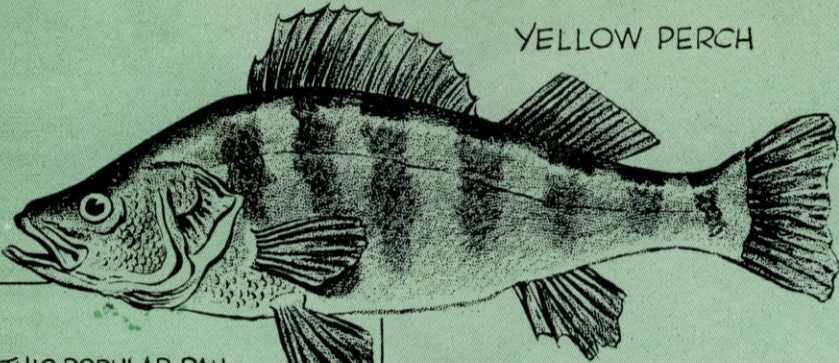
. . . Violators Roundup

<i>Defendant</i>	<i>Offense</i>	<i>Penalty</i>
Gerard O. Biegel, 509 Harrison St., Passaic	Illegal missile—small game sea.	100
Elwood Harkins, Naval Air Station, Lakehurst	Firearm—more 3 shells	20
Emil Cobianchi, 63 Bergen Blvd., W. Paterson	Kill cock pheasant before hrs.	20
Donald B. Luzannani, 203 Summit St., Hightstown	Hunt before hours	20
Earl Harris, 156 Walnut St., Montclair	Hunt before hours	20
John Kaznowski, 180 Roosevelt Ave., Carteret	Loaded firearm in vehicle	20
Donald Todd, Sr., Zellar Rd., Long Valley	Poss. wild deer	100
Donald Todd, Sr., Zellar Rd., Long Valley	Poss. rifle hunting wild deer	100
Silvio Santangelo, 294 Summer St., Passaic	Firearm—more 3 shells	20
Henry C. Lance, Hamilton Apts., Rahway	Hunt before hours	20
Timothy Scott, 399 S. Pleasant Ave., Ridgewood	Trap—no license	20
Timothy Scott, 399 S. Pleasant Ave., Ridgewood	Poss. trapped game bird	20
Gerardo LoMarte, Jr., 20 Shady Nook St., Cliftwood	Loaded firearm in vehicle	20
Robert Carroll, 27 Hawthorne St., Cliftwood	Loaded firearm in vehicle	20
Joseph P. Samtataro, Sr., 157 North Rd., Nutley	Loaded firearm in vehicle	20
Paul Chirico, 30 Carlo Dr., Fairfield Twp.	Firearm—more 3 shells	20
Grover C. Morrie, III, 264 Vernon Ave., Clifton	Hunt no license	20
Nichola Farra, 24 Chase St., Nutley	Poss. protected bird	20
Stephen Scharaloi, 242 Pitman Pl., Lake Parsippany	Firearm more 3 shells	20
Kenneth H. Wells, 6 Blvd. Terr., Atlantic City	Fail display tag-clothing	5
Wilbert Munyan, 70 So. School St., Gibbstown	Hunt before hours	20
Lewis E. Fox, 137 Mantua Ave., Paulsboro	Hunt before hours	20
John Hall, 228 Railroad Ave., Rio Grande	Hunt before hours	20
Robert Zuzulock, 117 W. Lavender, Wildwood Crest	Hunt before hours	20
Russell Munyan, R.D. #1, Newfield	Hunt before hours	20
William Munyan, Rambo Ave., Gibbstown	Hunt before hours	20
George L. Dickel, 2 Oliver Ave., Trenton	Hunt anothers property	20
Richard A. Zlotkowski, R.D., Farmingdale	Hunt deer at night	100
Richard A. Zlotkowski, R.D., Farmingdale	Hunt with aid of lights	20
Richard A. Zlotkowski, R.D., Farmingdale	Hunt no license	20
Frank Grecco, 1450 Amwell Rd., Somerset	Kill male pheas. before hrs.	20
Michael W. Lamp, R.D. #2, Englishtown	Hunt no license	20
Donald E. Applegate, Jr., Maple Drive, Colts Neck	Loaned hunting license to another	20
Robert Adams, 827 N. 13th St., Hammonton	Fish no license	20
Willie Clark, 810 N. 13th St., Hammonton	Fish no license	20
Wm. R. Townsend, 129 Whitely Terr., Darby, Pa.	Poss. loaded firearm in vehicle	20
Andrew W. Chase, Main & Lake Rds., Newfield	Fish no license	20
Albert A. Juliano, 322 Alomnsson Rd., Blenheim	Tag not displayed on clothing	5
Norman Shuhart, Jackson Rd., Atco	Poss. loaded firearm in vehicle	20
Walter Fields, Pitman & Downer Rds., Glassboro	Poss. illegal firearm	20
Samuel W. Lilly, Naval Air Station, Lakehurst	Poss. illegal firearm	20
Albino R. Jeronimo, 444 Magnolia Ave., Elizabeth	Poss. loaded firearm in vehicle	20
William Sickles, 166 Victoria Pl., Union Beach	Poss. illegal firearm	20
Robert Schuster, Box 200 R.D. #1, Jackson	Poss. loaded firearm in vehicle	20
John Otero, 71 Doty Rd., Haskell	Hunt before hours	20
Henry Platt, 570 Ringwood Ave., Midvale	Hunt before hours	20
Keith Holmberg, 30 Whistler Pl., Haskell	Hunt before hours	20
Edward Henderson, 5 Wheeler Ave., Warwick	Hunt deer out of season	100
		Appeal
Michael DiDonato, 9-D Belleville Ct., Belleville	Hunt deer out of season	100
		Appeal
Frank Blundetto, 215 Cedar St., Paterson	Hunt before hours	20

Fur, Fin ^{and} Campfire

By JACK SORDS

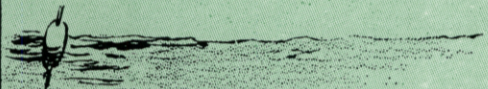
YELLOW PERCH



THIS POPULAR PAN-FISH IS ABUNDANT IN SOUTHERN CANADA AND EASTERN UNITED STATES FROM MINNESOTA TO THE OCEAN AND AS FAR SOUTH AS THE CAROLINAS. THEY ARE USUALLY FROM SEVEN TO NINE INCHES IN LENGTH BUT TWELVE INCHERS ARE COMMON IN THE GREAT LAKES. THE RECORD CATCH DATES BACK TO 1865 WHEN A FOUR POUND, THREE AND ONE HALF OUNCE FISH WAS CAUGHT AT BORDENTOWN, N. J.

THEY ARE ALSO KNOWN BY OTHER COMMON NAMES INCLUDING STRIPED PERCH, CONVICT, RINGED PERCH AND JACK PERCH

STILL FISHING WITH A LIGHT CANE POLE AND BOBBER IS A POPULAR METHOD OF CATCHING PERCH. FOR BAIT USE WORMS, MINNOWS, CRAWFISH, CRICKETS, GRASSHOPPERS OR HELLGRAMMITES



TO GET THE MOST OUT OF PERCH FISHING, USE A LIGHT-WEIGHT FLY ROD WITH A FLY AND SPINNER COMBINATION FOR A LURE

There is no closed season in open (unfrozen) waters, no minimum size limit, and no bag or possession limit on yellow perch in New Jersey.

NEW JERSEY OUTDOORS

P. O. Box 1809
TRENTON 25, N. J.

Form 3579 Requested

*Second class postage
paid at Trenton, N. J.,
and additional office.*

New Jersey



Tercentenary

1664 - 1964