

August 2021 Traffic Report

AVIATION DEPARTMENT

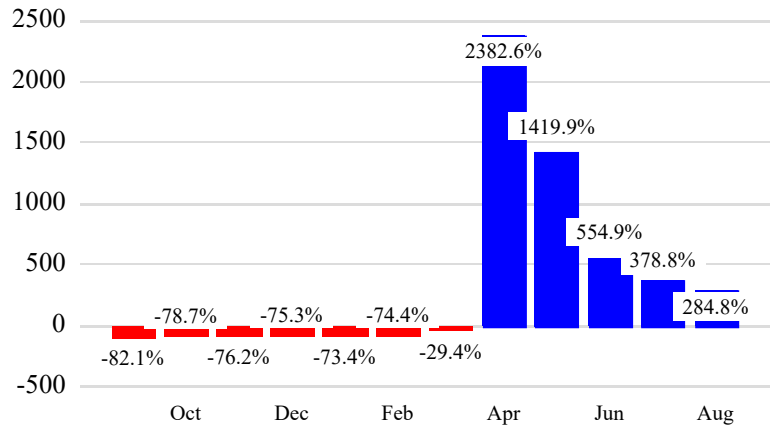
REGION



Revenue Passengers

	<u>Curr Month</u>	<u>% Change</u>	
	8,281,398	284.8%	▲
Domestic	5,739,881	261.1%	
International	2,541,517	351.8%	
Non-Revenue	203,904	61.0%	
<u>Load Factors</u>			
	<u>Curr Month</u>		
Domestic	84.1%		
International	73.7%		
		80.6%	
		Avg Load Factor	

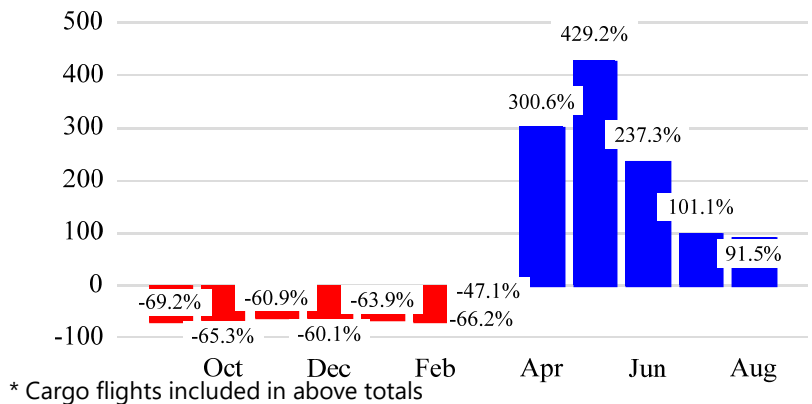
Year over Year % Change in Revenue Passengers - 12 Months



Total Flights

	<u>Curr Month</u>	<u>% Change</u>	
	69,909	81.4%	▲
Excl GA	67,527	91.5%	▲
Domestic	50,385	81.8%	
International	17,142	126.8%	
Gen Aviation	2,382	-27.0%	
Cargo Flights*	3,673	0.6%	

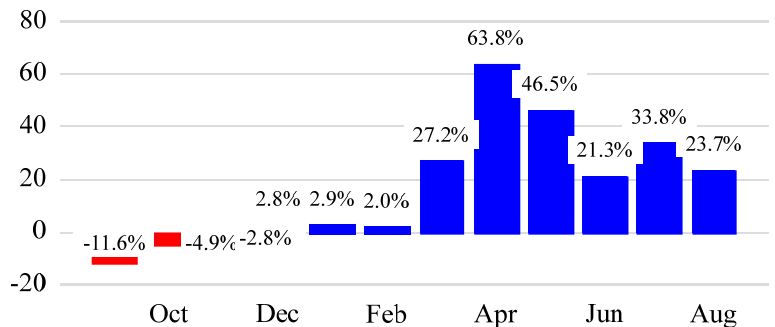
Year over Year % Change in Total Flights (Excl GA) - 12 Months



Cargo (Short Tons)

	<u>Curr Month</u>	<u>% Change</u>	
	184,624	23.7%	▲
Domestic	81,405	10.4%	
International	103,219	36.7%	
Mail	10,641	3.4%	

Year over Year % Change in Cargo - 12 Months



Top 5 Declines in Revenue Passengers by Airline

Airline	Pax Decline	% Decline
CAPE AIR	(154)	-52.0%

Top 5 Increases in Revenue Passengers by Airline

Airline	Pax Increase	% Increase
DELTA	1,621,940	386.0%
UNITED	1,396,748	231.0%
JETBLUE AIRWAYS	1,295,956	338.0%
AMERICAN	686,359	270.0%
SPIRIT AIRLINES	92,038	61.0%

Airport Summary Statistics

JFK Summary

	Current Month	YoY %
Total Revenue Pax	3,664,395	384.0
Total Flights Including GA	28,570	117.0
Total Cargo (Short Tons)	129,057	33.1

EWR Summary

	Current Month	YoY %
Total Revenue Pax	3,088,344	206.0
Total Flights Including GA	25,824	71.0
Total Cargo (Short Tons)	61,367	7.1

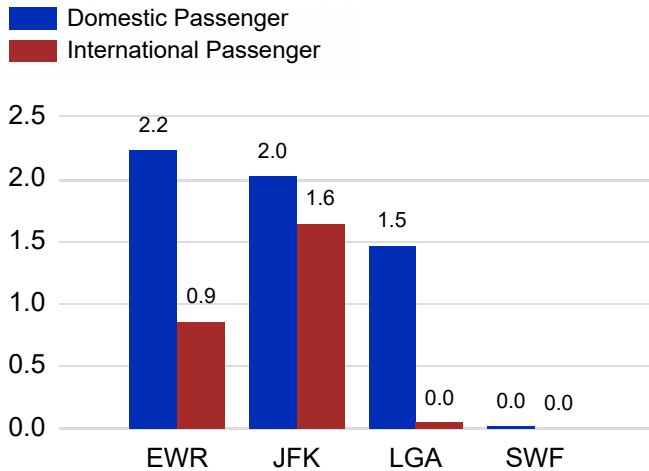
LGA Summary

	Current Month	YoY %
Total Revenue Pax	1,511,171	293.0
Total Flights Including GA	13,822	73.0
Total Cargo (Short Tons)	531	-11.2

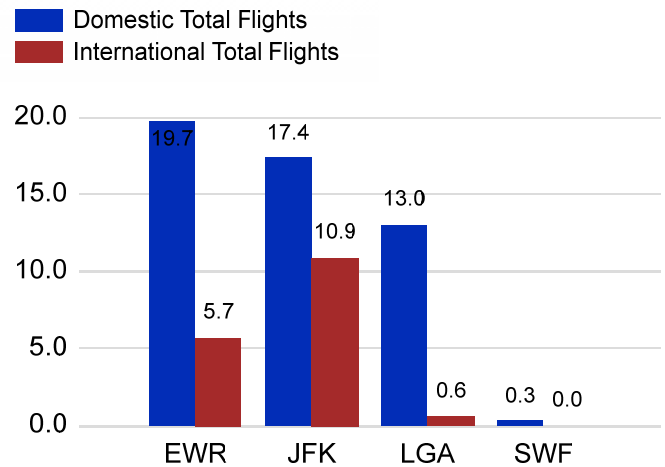
SWF Summary

	Current Month	YoY %
Total Revenue Pax	17,488	294.0
Total Flights Including GA	1,693	-20.0
Total Cargo (Short Tons)	4,310	-8.1

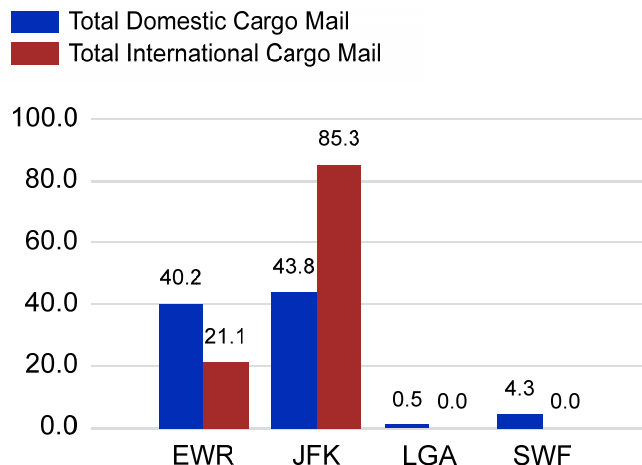
Total Passengers by Airport (Millions)



Total Flights by Airport (Thousands)



Total Cargo by Airport (Thousands of Short Tons)



12 Months Ending Passenger & Freight Statistics

Top 20 Airlines Ranking by Passengers & Freight: 12 Months Ending Aug 2021

Airline Name	Domestic	International	Total Pax	% of Tot	Airline Name	Short Tons	% of Tot
UNITED	10,409,304	3,117,876	13,527,180	25.72%	FEDERAL EXPRESS	451,475	20.74%
DELTA	10,039,066	1,846,367	11,885,433	22.60%	UNITED PARCEL	206,583	9.49%
JETBLUE AIRWAYS	7,653,004	3,397,911	11,050,915	21.02%	United	197,595	9.08%
AMERICAN	5,760,332	595,194	6,355,526	12.09%	ATLAS AIR	86,469	3.97%
SPIRIT AIRLINES	2,260,116	0	2,260,116	4.30%	AIR TRANSPORT INT'L.(BAX Inc.)	84,240	3.87%
SOUTHWEST AIRLINES	1,027,307		1,027,307	1.95%	DELTA	75,720	3.48%
FRONTIER AIRLINES	724,685	28,301	752,986	1.43%	KALITTA AIR LLC	74,227	3.41%
ALASKA AIRLINES	545,693		545,693	1.04%	KOREAN	58,421	2.68%
COPA AIRLINES		406,903	406,903	0.77%	CATHAY PACIFIC	56,665	2.60%
TURKISH AIR		367,468	367,468	0.70%	CARGOLUX AIRLINES	55,760	2.56%
AVIANCA		268,974	268,974	0.51%	AMERICAN	54,359	2.50%
EMIRATES AIRLINES		239,204	239,204	0.45%	CHINA AIRLINES (CAL)	49,002	2.25%
AIR CANADA		232,944	232,944	0.44%	ABX AIR INC	38,980	1.79%
QATAR AIRWAYS		231,239	231,239	0.44%	QATAR AIRWAYS	36,979	1.70%
ALLEGiant AIR	181,288		181,288	0.34%	LUFTHANSA CARGO	35,696	1.64%
AIR INDIA		176,354	176,354	0.34%	VIRGIN ATLANTIC	31,645	1.45%
EL AL		164,245	164,245	0.31%	AIR CHINA INTERNATIONAL	29,635	1.36%
LUFTHANSA CARGO		163,824	163,824	0.31%	CHALLENGE AIRLINES (formerly ACE BELGIUM)	29,303	1.35%
AIR FRANCE		163,155	163,155	0.31%	TURKISH AIR	28,158	1.29%
AEROMEXICO		148,722	148,722	0.28%	BRITISH AIRWAYS	23,054	1.06%

Passengers & Freight by Market - 12 Months Ending

Market	Passengers	Freight (Short Tons)
TRANSATLANTIC	5,216,505	736,484
CANADA	236,415	1,913
CARIBBEAN + BERMUDA	4,868,995	13,025
CENTRAL AND SOUTH AMERICA	1,837,361	26,814
DOMESTIC	36,912,982	1,011,686
MEXICO	1,436,307	8,999
TRANSPACIFIC	273,263	368,746
PUERTO RICO	1,802,446	8,747

Additional Data

Airline Schedules (ADI): Non-Stop Destinations

	Region	Flights (Daily)	Cities
Domestic	Domestic	1593.9	96
	Puerto Rico	42.4	2
	Total	1,636.3	98.00
International	Canada	27.7	2
	Caribbean & Bermuda	161.6	18
	Central & South America	69.5	18
	Mexico	39.8	5
	Trans-Atlantic	197.1	48
	Trans-Pacific	16.6	9
	Total	512.2	100.00
Total		2,148.5	198.00

Airline Schedules (ADI): Carriers & Aircraft Type

	Aircraft Type	Flights (Daily)	Carriers
Domestic	Commuter	618.8	4
	General Aviation	1.9	1
	Narrow Body	930.5	10
	Wide Body	85.2	5
	Total	1,636.3	20.00
International	Commuter	26.6	3
	Narrow Body	263.3	16
	Wide Body	222.3	54
	Total	512.2	73.00
Total	Total	2,148.5	93.00

Passenger Demographics (ACI ASQ Surveys - 2019)

Connect		Trip Type		Gender	
Local Origin/Destination	83.7%	Business	21.9%	F	47.6%
Connecting	16.3%	Leisure	78.1%	M	52.4%
Transport Mode		Annual Flights		Residency	
Bus/Shuttle	9.7%	1-2	49.7%	United States	22.9%
Other	11.3%	3-5	29.8%	Other	77.1%
Private/Company Car	42.0%	6-10	12.6%		
Rail/Subway	6.8%	11-20	4.7%		
Rental Car	10.1%	21+	3.2%		
Taxi/Limo	20.1%				

Ground Transportation

	Curr Month	% Change		Curr Month	% Change
<i>Paid Parked Cars</i>	408,981	158.9	<i>Total Air Train Passengers</i>	1,716,691	230.0
<i>GTC Bookings</i>	0		<i>Paid Howard Beach Passengers</i>	77,794	257.4
<i>Airport Coach Passengers</i>	15,942		<i>Paid Jamaica Passengers</i>	288,155	310.0
<i>Taxis Dispatched</i>	277,221	444.1	<i>Paid EWR Passengers</i>	137,758	229.0
			<i>On-Airport (Unpaid) Passengers</i>	1,212,984	214.0

Airlines for American Carriers (USA)

	Curr Month	% Change
<i>Freight:revenue ton miles (000)</i>	0	-100.0

Regional Airports: Other

	Curr Month	% Change
<i>TEB flight movements</i>	9,582	56.7
<i>ISP Total passengers</i>	120,007	413.8
<i>HPN Total passengers</i>	92,672	