



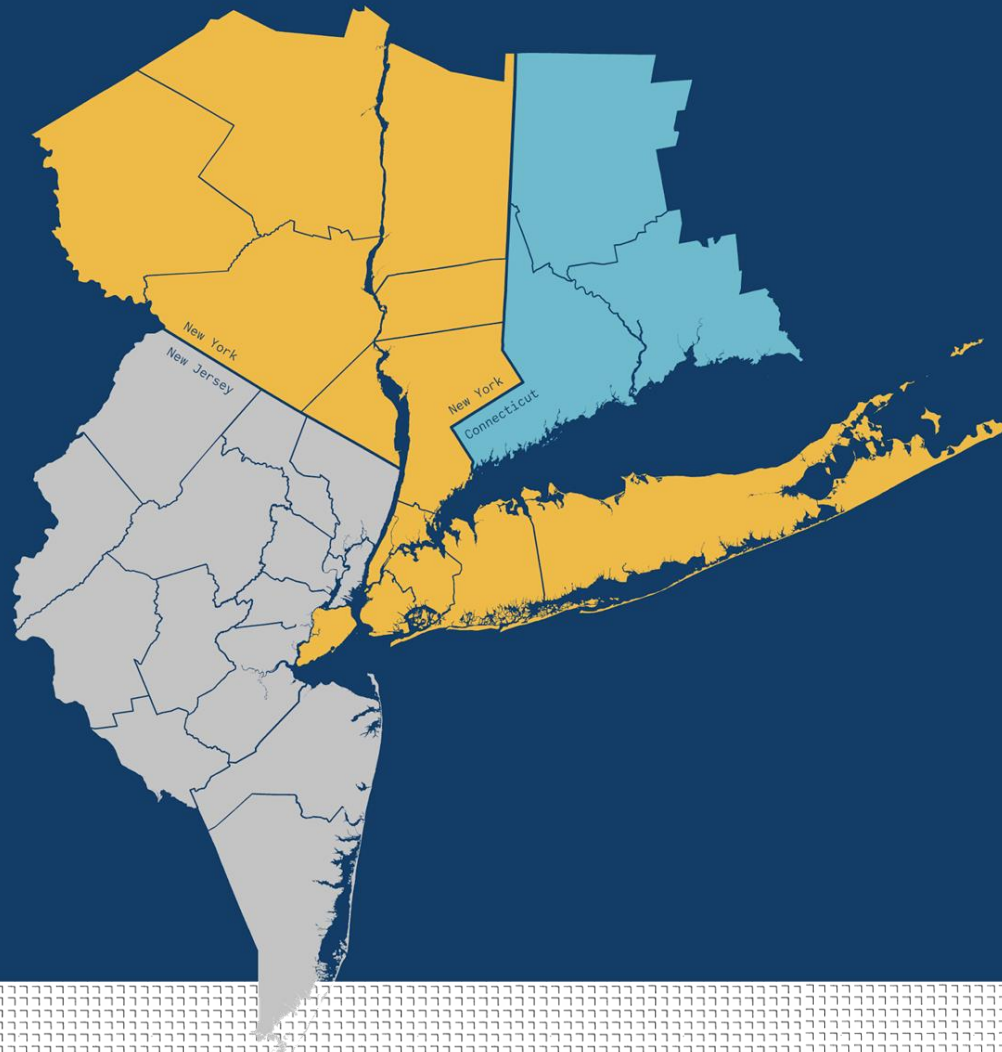
2025: Updates for the Region

May 12, 2025

Zoe Baldwin

VP, State Programs
Regional Plan Association

Our region



REGION AT A GLANCE

3

States

31

Counties

782

Municipalities

23 million

Residents

13 thousand

Square Miles



Transportation



**Housing &
Neighborhood
Planning**



Our work



**Energy &
Environment**



Governance

Regional Plans

Since 1929, RPA has released four long-range plans to guide the growth and development of the region.

The plans have led to the establishment of some of the region's most significant infrastructure, open space, and economic development projects.

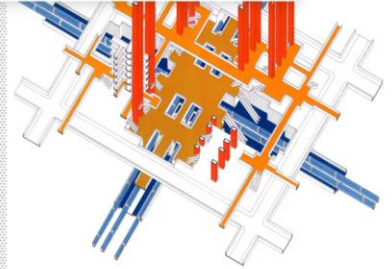
May
1929

Regional Plan of New York and Its Environs



Nov
1968

The Second Regional Plan



Feb
1996

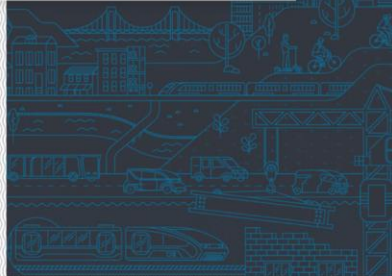
A Region at Risk: The Third Regional Plan



Nov
2017

The Fourth Regional Plan

Making the Region Work for ALL of Us



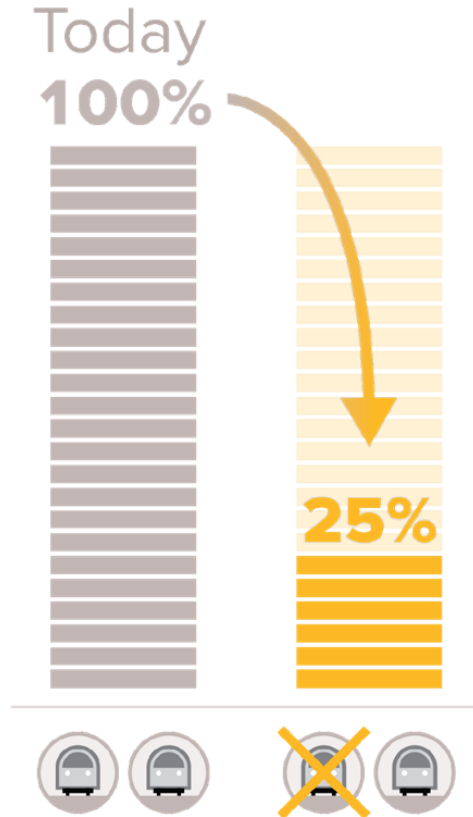
Gateway Program:

→ 46,100 jobs

→ \$445B in economic benefits



Losing One Track Reduces Capacity by Up to 75%



With **two tunnels**, peak hour capacity is **24 trains**



With **one tunnel**, peak hour capacity is **6 trains, or 25%**

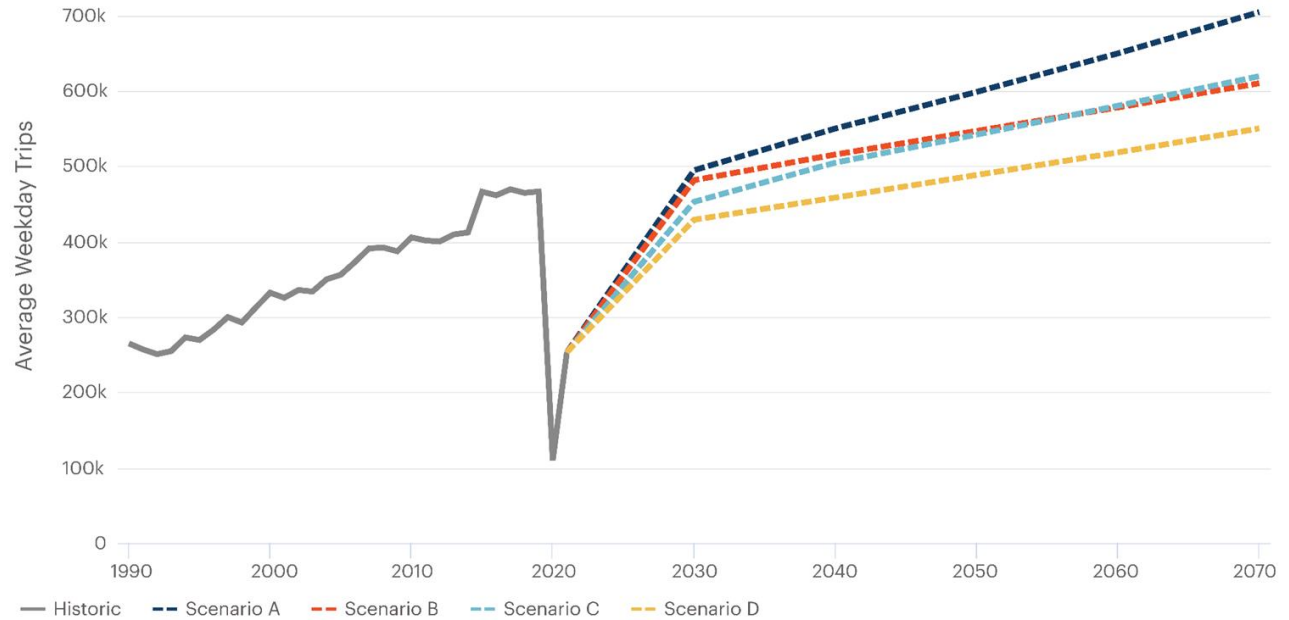


A partial shutdown of the Hudson River Tunnel would cost the US ~\$16B over four years



Historic and Future Trans-Hudson Ridership

Even with conservative estimates and high assumptions for the number of days people will continue to work from home, transit ridership on peak days would exceed its pre-pandemic peak by the time the Gateway tunnel is projected to be completed in the mid-2030s.



Gateway Program Project Status

In Delivery

Portal North Bridge

Hudson Tunnel Project

Hudson Yards
Concrete Casing 3

In Design

Dock Bridge
Rehabilitation

Sawtooth Bridges
Replacement

Harrison 4th Track

In Development

NY Penn Station
Capacity Expansion

In Planning

Portal South Bridge

Secaucus Expansion &
Bergen Loops

NJ TRANSIT Gateway
Storage Yard

Highline Renewal &
State of Good Repair

Capitol Confusion



Golden Age of NJT: 1996-2011

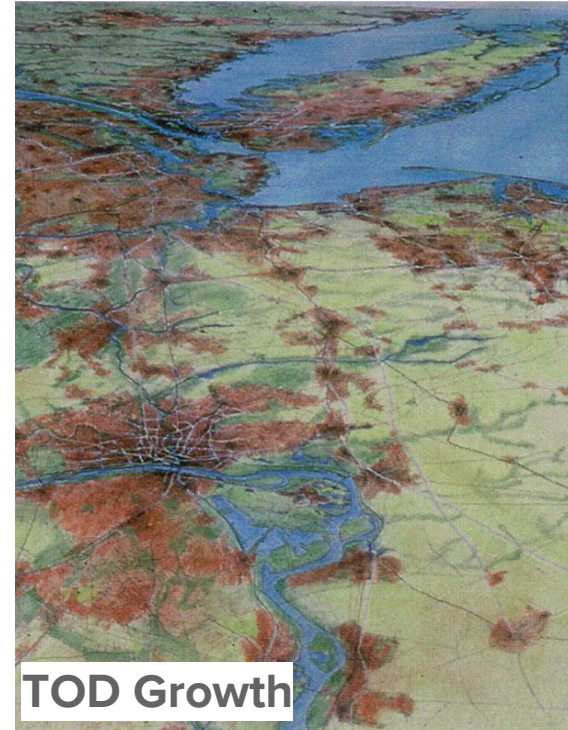
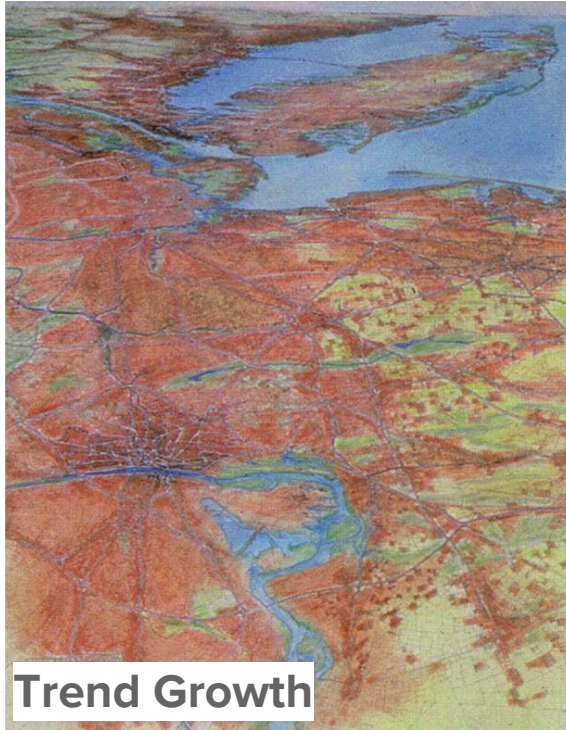
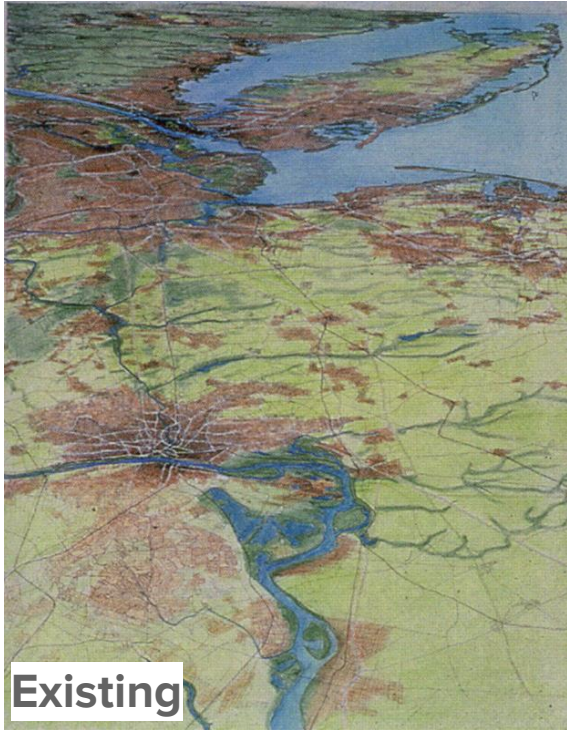
- 1996 Hudson Bergen Light Rail
- 1997 Midtown Direct
- 2002 Montclair - Boonton connector
- 2003 Secaucus Junction
- 2004 RiverLine
- 2006 Newark Light Rail
- 2009 Meadowlands Line



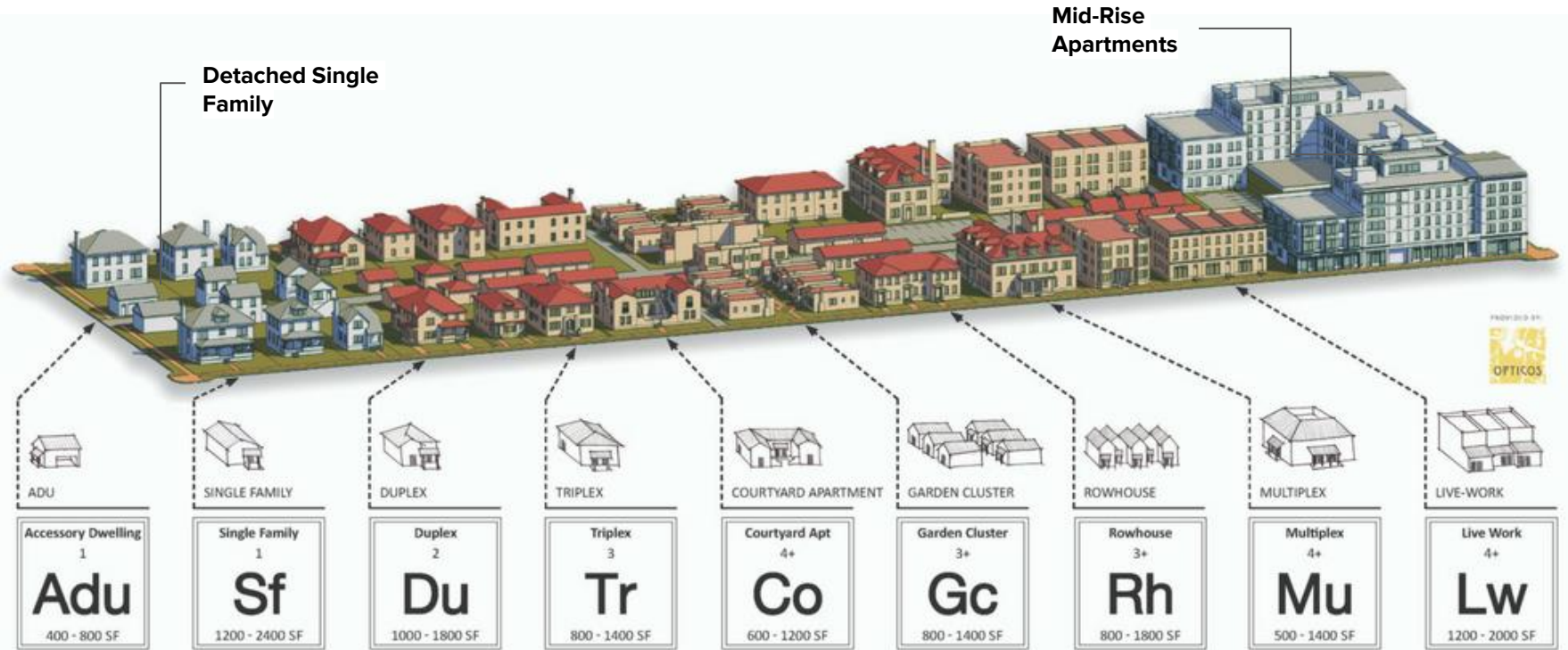
Land Use 🤝 Transportation



Growth Patterns in the Region



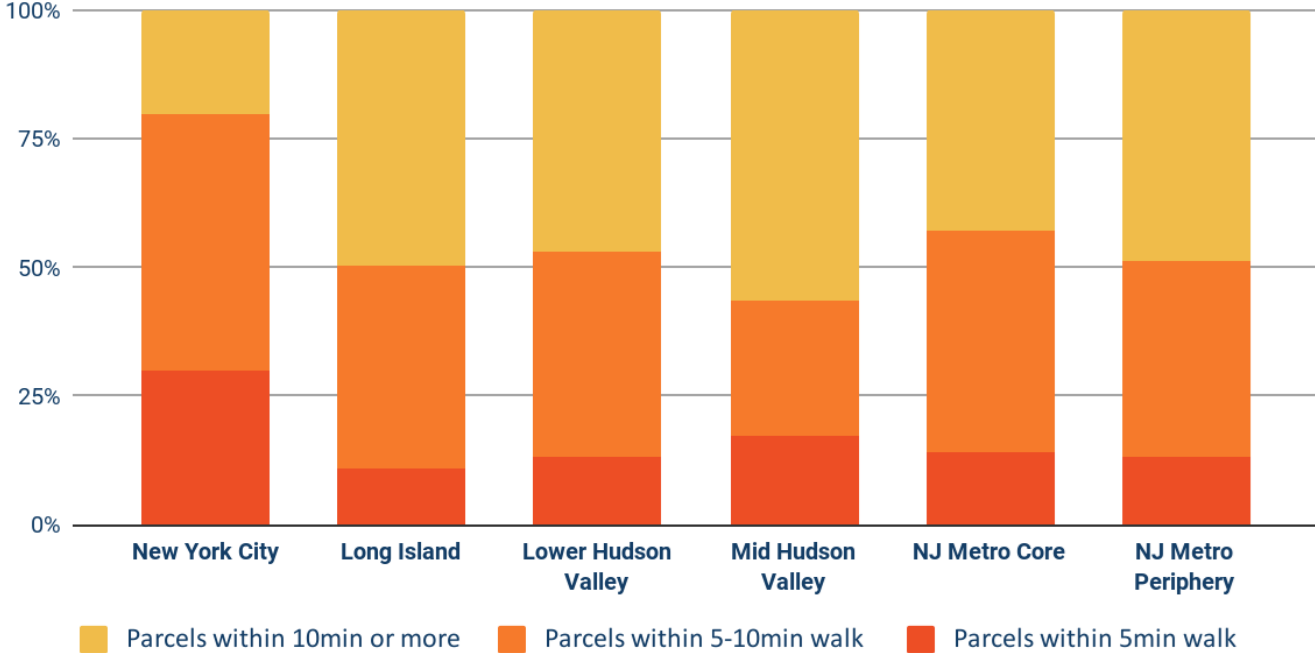
Built Form and Density



Accessibility

Walk Access to Transit by Sub Regions

Land Parcels within 5 & 10min walk distance to transit





Thank You

