



State of New Jersey

2013-14

35-5550-050

OVERVIEW

SOMERSET

WATCHUNG HILLS REGIONAL

GRADE SPAN 09-12

WATCHUNG HILLS REGIONAL HIGH SCHOOL

108 STIRLING RD

WARREN, NJ 07059-5772

This school's academic performance is **high when compared** to schools across the state. Additionally, its academic performance **lags in comparison** to its peers. This school's college and career readiness is **high when compared** to schools across the state. Additionally, its college and career readiness is **about average when compared** to its peers. This school's graduation and post-secondary performance is **very high when compared** to schools across the state. Additionally, its graduation and post-secondary readiness is **very high when compared** to its peers.

Performance Areas	Peer Percentile	Statewide Percentile	Percent of Targets Met
Academic Achievement	21	68	100%
College & Career Readiness	54	75	100%
Graduation and Post-Secondary	81	82	100%

Improvement Status

N/A

Rationale

N/A

Very High Performance is defined as being equal to or above the 80th percentile.

High Performance is defined as being between the 60th and 79.9th percentiles.

Average Performance is defined as being between the 40th and 59.9th percentiles.

Lagging Performance is defined as being between the 20th and 39.9th percentiles.

Significantly Lagging Performance is defined as being equal to or below the 19.9th percentile.

Peer Schools are schools that have similar grade levels and students with similar demographic characteristics, such as the percentage of students qualifying for Free/Reduced Lunch, Limited English Proficiency programs or Special Education programs.

Academic Achievement

This school outperforms **68%** of schools statewide as noted by its statewide percentile and **21%** of schools educating students with similar demographic characteristics as noted in its peer school percentile in the performance area of Academic Achievement. Additionally, this school is meeting **100%** of its performance targets in the area of Academic Achievement.



Academic Achievement measures the content knowledge students have in language arts literacy and math. For high schools, this includes measures of the school's proficiency rate on both the Language Arts Literacy and Math sections of the New Jersey High School Proficiency Assessment (HSPA). A proficiency rate is calculated by summing the count of students who scored either proficient or advanced proficient on the assessment and dividing by the count of valid test scores.

College and Career Readiness

This school outperforms **75%** of schools statewide as noted by its statewide percentile and **54%** of schools educating students with similar demographic characteristics as noted in its peer school percentile in the performance area of College and Career Readiness. Additionally, this school is meeting **100%** of its performance targets in the area of College and Career Readiness.



College and Career Readiness measures the degree to which students are demonstrating behaviors that are indicative of future attendance and/or success in college and careers. For high schools, this includes measures of participation in college readiness tests such as the SAT, ACT or PSAT and in rigorous coursework as defined by participation in AP or IB courses in English, math, social studies and science.

Graduation and Post-Secondary

This school outperforms **82%** of schools statewide as noted by its statewide percentile and **81%** of schools educating students with similar demographic characteristics as noted in its peer school percentile in the performance area of Graduation and Post-Secondary. Additionally, this school is meeting **100%** of its performance targets in the area of Graduation and Post-Secondary.



Graduation and Postsecondary measures the rate at which students who begin high school four years earlier graduate within four years. Also included is a measure of the rate at which students in a particular school drop out of school.

State of New Jersey

2013-14



35-5550-050

DEMOGRAPHIC INFORMATION

SOMERSET

WATCHUNG HILLS REGIONAL

GRADE SPAN 09-12

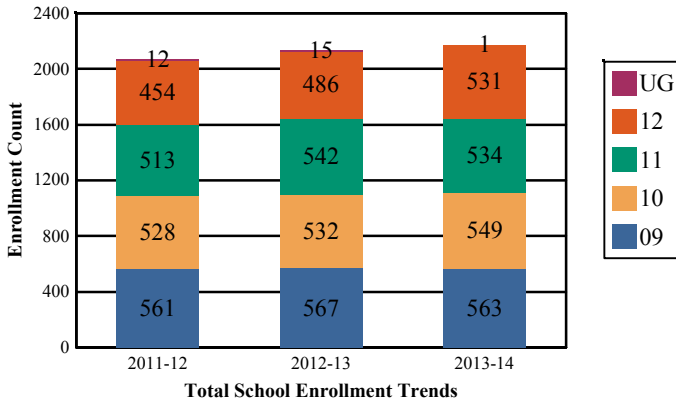
WATCHUNG HILLS REGIONAL HIGH SCHOOL

108 STIRLING RD

WARREN, NJ 07059-5772

Enrollment by Grade

This graph presents the count of students who were 'on roll' by grade in October of each school year.



Language Diversity

This table presents the percentage of students who primarily speak each language in their home.

2013-14	Percent
English	85.6%
Spanish	3.7%
Chinese	3.1%
Portuguese	1.8%
Gujarati	0.7%
Hindi	0.7%
Other	4.3%

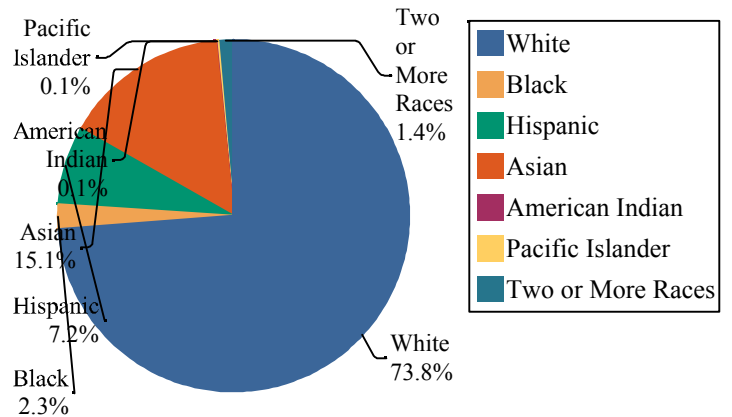
Note: "UG" represents the count of students who are 'on roll' in this school but who are educated in ungraded classrooms, meaning that the classrooms may contain students from multiple grade levels.

Total School Enrollment

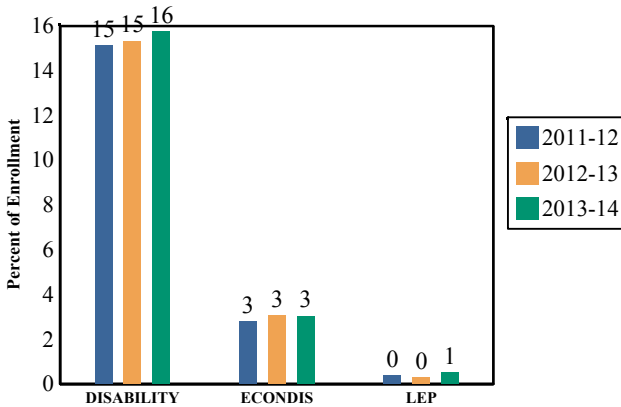
2011-12	2,068
2012-13	2,141
2013-14	2,178

Enrollment by Ethnic/Racial Subgroup

This graph presents the percentages of enrollment for each subgroup defined by the No Child Left Behind Act of 2001

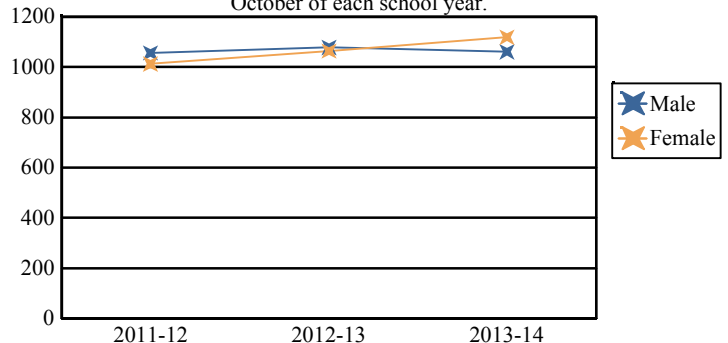


Enrollment Trends by Program Participation



Enrollment by Gender

This graph presents the count of students by gender who were 'on roll' in October of each school year.



Current Year Enrollment by Program Participation

2013-2014	Count of Students	% of Enrollment
Students with Disability	344	16%
Economically Disadvantaged Students	67	3.1%
Limited English Proficient Students	11	0.5%

	Male	Female
2011-12	1,056	1,012
2012-13	1,078	1,064
2013-14	1,060	1,118

State of New Jersey

2013-14



35-5550-050

ACADEMIC ACHIEVEMENT

WATCHUNG HILLS REGIONAL HIGH SCHOOL

SOMERSET

108 STIRLING RD

WATCHUNG HILLS REGIONAL

GRADE SPAN 09-12

WARREN, NJ 07059-5772

Academic Achievement measures the content knowledge students have in Language Arts Literacy and Math. In high schools, this includes the outcomes of the New Jersey High School Proficiency Assessment (HSPA). The first column - Schoolwide Performance - in the table below includes measures of the total schoolwide proficiency rate in both Language Arts Literacy and Math across multiple administrations of the assessment. The second column - Peer School Percentile - indicates where the school's proficiency rate compares to its group of peer schools. For example, a school that has a peer school percentile of 65 has a proficiency rate that is higher than 65% of its peer schools. The third column - Statewide Percentile - indicates where the school's proficiency rate compares to schools across the state. For example, a school that has a statewide percentile of 30 has a proficiency rate that is higher than 30% of all schools with HSPA scores statewide. The last column - Percent of Targets Met - presents the percentage of progress targets met as defined by the NJDOE's NCLB waiver.

The Summary row presents the averages of the peer school percentiles, the average of statewide percentiles and the percentage of statewide targets met.

Academic Achievement Indicators	Schoolwide Performance	Peer Percentile	State Percentile	Percent of Targets Met
HSPA Language Arts Proficiency and above	97%	32	68	100%
HSPA Math Proficiency and above	91%	10	67	100%
SUMMARY - Academic Achievement		21	68	100%

NCLB Progress Targets - Language Arts Literacy

This table presents the Progress Targets as uniquely calculated for each subgroup in each school under NJDOE's NCLB waiver. The methodology - as defined by the United States Department of Education - is calculated so that each subgroup will halve the gap between their 2011 proficiency rate and 100% proficiency by 2017.

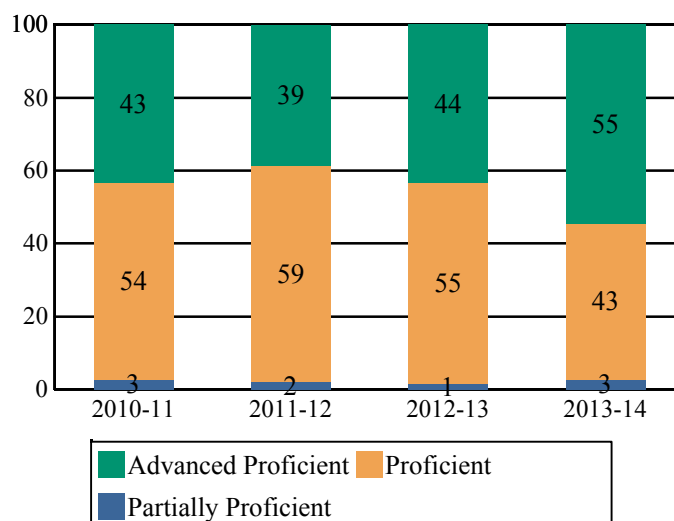
Subgroups	Total Valid Scores	Pass Rate	Target	Met Target?
Schoolwide	527	97.3	90	YES
White	397	97.8	90	YES
Black	-	-		--
Hispanic	35	97.1	90	YES
American Indian	-	-		--
Asian	72	97.2	90	YES
Two or More Races	-	-		--
Students with Disability	90	84.5	85.3	YES*
Limited English Proficient Students	-	-		--
Economically Disadvantaged Students	-	-		--

YES* = Met Progress Target (Confidence Interval Applied)

Data is presented for subgroups when the count is high enough under NCLB suppression rules.

Proficiency Trends - Language Arts Literacy

This graph presents the percentage of students who scored in the Advanced Proficient, Proficient and Partially Proficient categories of the statewide Language Arts Literacy assessment over the prior four years.



State of New Jersey

2013-14



35-5550-050

WATCHUNG HILLS REGIONAL HIGH SCHOOL
108 STIRLING RD
WARREN, NJ 07059-5772

ACADEMIC ACHIEVEMENT

SOMERSET

WATCHUNG HILLS REGIONAL

GRADE SPAN 09-12

NCLB Progress Targets - Math

This table presents the Progress Targets as uniquely calculated for each subgroup in each school under NJDOE's NCLB waiver. The methodology - as defined by the United States Department of Education - is calculated so that each subgroup will halve the gap between their 2011 proficiency rate and 100% proficiency by 2017.

Subgroups	Total Valid Scores	Pass Rate	Target	Met Target?
Schoolwide	527	91.4	90	YES
White	397	91.7	90	YES
Black	-	-		--
Hispanic	35	85.7	81.7	YES
American Indian	-	-		--
Asian	72	94.4	90	YES
Two or More Races	-	-		--
Students with Disability	90	55.5	64.1	YES*
Limited English Proficient Students	-	-		--
Economically Disadvantaged Students	-	-		--

YES* = Met Progress Target (Confidence Interval Applied)

Data is presented for subgroups when the count is high enough under NCLB suppression rules.

Proficiency Outcomes - Biology

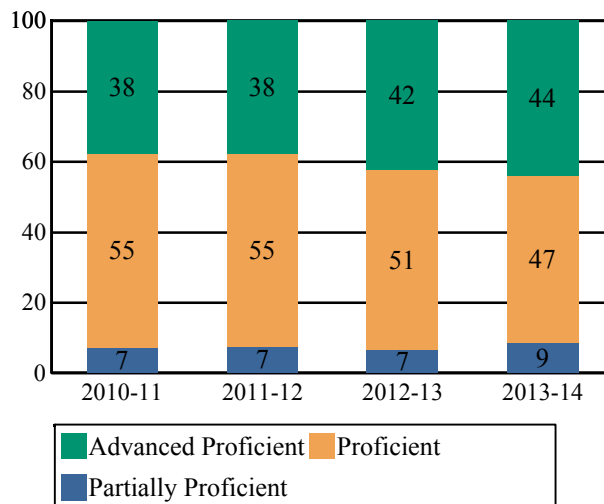
This table presents the percentage of students who scored in the Advanced Proficient, Proficient and Partially Proficient categories of the New Jersey Biology Competency Test (NJBCCT) in the latest school year.

Subgroups	Advanced Proficient	Proficient	Partially Proficient
Schoolwide	-	-	-
White	-	-	-
Black	-	-	-
Hispanic	-	-	-
American Indian	-	-	-
Asian	-	-	-
Two or More Races	-	-	-
Students with Disability	-	-	-
Limited English Proficient Students	-	-	-
Economically Disadvantaged Students	-	-	-

Data is presented for subgroups when the count is high enough under NCLB suppression rules.

Proficiency Trends - Math

This graph presents the percentage of students who scored in the Advanced Proficient, Proficient and Partially Proficient categories of the statewide Math assessment over the prior four years.



Proficiency Trends - Biology

This graph presents the percentage of students who scored in the Advanced Proficient, Proficient, and Partially Proficient categories of the Biology Competency Test over the last two years.

Data is suppressed to protect the confidentiality of the students.

State of New Jersey

2013-14



35-5550-050

COLLEGE AND CAREER READINESS

WATCHUNG HILLS REGIONAL HIGH SCHOOL

SOMERSET

108 STIRLING RD

WATCHUNG HILLS REGIONAL

GRADE SPAN 09-12

WARREN, NJ 07059-5772

Students in high schools begin to demonstrate college readiness behaviors long before they actually graduate from high school. Among those behaviors are taking college entrance exams and challenging themselves with rigorous course work. The table below presents five such indicators: the percentage of students enrolled in the 12th grade who took the SAT or ACT, the percentage of 10th and 11th graders who took the PSAT, the percentage of students who scored above the SAT benchmark of 1550, the percentage of 11th and 12th graders who took at least one AP or IB test in English, math, social studies or science, and the percentage of those AP or IB tests that were scored a 3 or higher.

The first column - Schoolwide Performance - represents the outcomes for these particular indicators in the school. The second column - Peer School Percentile - indicates how the school's performance compares to its group of peer schools. For example, a school whose peer school percentile is 65 in SAT participation has a higher SAT Participation than 65% of its peer group. The third column - Statewide Percentile - indicates how the school's performance compares to schools across the state. The fourth column - Statewide Target - provides the statewide targets for each of these indicators. The last column - Met Target? - indicates whether the School Performance met or exceeded the statewide target.

The Summary row presents the averages of the peer school percentiles, the average of statewide percentiles and the percentage of statewide targets met.

College and Career Readiness Indicators	Schoolwide Performance	Peer Percentile	Statewide Percentile	Statewide Target	Met Target?
Percent of Students Participating in SAT or ACT	95%	39	74	80%	YES
Percent of Students Participating in PSAT or PLAN	65%	32	40	60%	YES
Percent of Students Scoring Above 1550 on SAT	64%	42	82	40%	YES
Percent of Students Taking at least one AP Test or IB Test in English, Math, Social Studies or Science	47%	77	92	35%	YES
Percent of AP Tests ≥ 3 or IB Test ≥ 4 in English, Math, Social Studies or Science	89%	81	86	75%	YES
Summary		54	75		100%

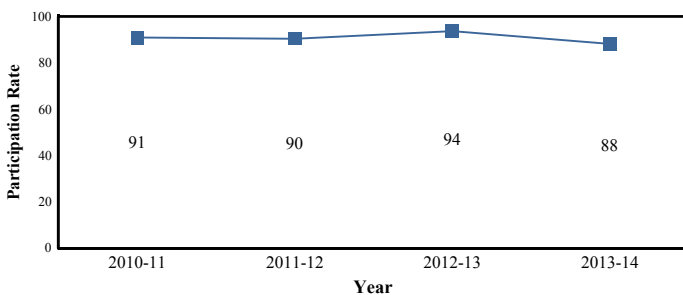
College Readiness Test Participation

The first column of the table below presents the percentage of students enrolled in the 12th grade who took the SAT or ACT and the percentage of students enrolled in 10th and 11th grade who took the PSAT. The second column provides the average across the school's peer group for these two metrics.

2013-14 Percent of Students	School	Peer Avg.	State Avg.
Participating in SAT	88.3%	89.8%	76.2%
Participating in ACT	52.4%		22.5%
Participating in PSAT or PLAN	65.3%	72.4%	75.0%

Participation Trends - SAT Testing

This graph presents the participation rate in the SAT over the last four years.



AP/IB Participation - 'Unique' Students

The table below presents the proportion of 'unique' students enrolled in at least 11th and 12th grade i.e., each student is counted once regardless of how many AP or IB courses he/she may take. The table also presents the proportion of how many 'unique' students took at least one AP or IB test to the school's enrollment in 11th and 12th grade.

2013-14 Percent of Students Taking	School	Peer Avg.	State Avg.
One or More Course	64.2%	52.9%	34.2%
One or More Test	52.1%	45.8%	28.4%
At least one AP or IB Test in English, Math, Social Studies or Science	47.2%	38.6%	18.9%

Note: Students who are enrolled in AP/IB coursework or take AP/IB tests in grades other than 11th and 12th are included in the numerator of this calculation.

AP /IB Test Results

This table presents the percentage of all AP/IB tests taken by students enrolled in the school that were scored AP ≥ 3 and scored IB ≥ 4 .

2013-14	School	Peer Avg.	State Avg.
Percent of AP Tests ≥ 3 or IB Test ≥ 4	88.1%	83.7%	74.1%
Percent of Scores in AP ≥ 3 or IB ≥ 4 in English, Math, Social Studies or Science	88.9%	82.4%	72.4%

COLLEGE AND CAREER READINESS

SOMERSET

WATCHUNG HILLS REGIONAL

GRADE SPAN 09-12

WATCHUNG HILLS REGIONAL HIGH SCHOOL

108 STIRLING RD

WARREN, NJ 07059-5772

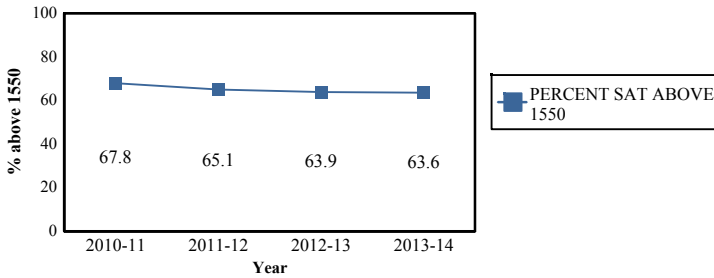
Scholastic Assessment Test (SAT) Results

This table presents the percentage of students who achieved a composite SAT score of 1550 or higher. The SAT benchmark score of 1550 (Critical Reading, Mathematics and Writing Score combined) indicates a 65 percent likelihood of achieving a B- average or higher during the first year of college, which in turn has been found by the College Board's research to be indicative of a high likelihood of college success and completion.

2013-14	School	Peer Avg.	State Avg
Percent of Students Scoring Above 1550 on SAT	63.6%	64.8%	44.6%

SAT Benchmark Trends

This chart presents the percentage of students who achieved a composite SAT score of 1550 or higher over the past four years.



Composite SAT Score

This chart presents the average composite SAT score from the last academic year for students enrolled in this school as well as the average scores achieved in Critical Reading, Mathematics and Writing. The averages from this school's peer group are also presented.

2013-14	School	Peer Avg.	State Avg.
Composite SAT Score	1,697	1,680	1,514
Critical Reading	556	549	496
Mathematics	576	575	521
Writing	565	555	497

This chart presents the scores achieved in Critical Reading, Mathematics and Writing by the students at the 25th percentile, the 50th percentile and the 75th percentile of the school's distribution of SAT scores.

2013-14	Critical Reading	Mathematics	Writing
75th Percentile	630	660	630
50th Percentile	550	570	560
25th Percentile	480	500	490

AP/IB Courses Offered

This table presents the count of students enrolled in each AP/IB course offered in this school in the first column. The second column presents the count of tests taken in each AP/IB course. The numbers may not match as some students do not take the test in the same year as they take the course and some students may take the course without taking the test or vice versa.

AP/IB Course Name	Students Enrolled	Students Tested
AP U.S. History	239	67
AP English Language and Composition	175	169
AP European History	171	149
AP English Literature and Composition	146	91
AP Statistics	95	86
AP Psychology	93	62
AP U.S. Government and Politics	75	53
AP Calculus AB	75	66
AP Human Geography	70	39
AP Spanish Language	55	7
AP Environmental Science	49	44
AP Biology	43	37
AP Chemistry	39	40
AP Physics C	37	35
AP French Language	29	6
AP Calculus BC	26	32
AP Studio Art-Two-Dimensional	25	15
AP Computer Science A	24	19
AP Microeconomics		2
AP Macroeconomics		1



State of New Jersey

2013-14

35-5550-050

COLLEGE AND CAREER READINESS

WATCHUNG HILLS REGIONAL HIGH SCHOOL

SOMERSET

108 STIRLING RD

WATCHUNG HILLS REGIONAL

GRADE SPAN 09-12

WARREN, NJ 07059-5772

Visual and Performing Arts

The chart below contains the percentage of students who were enrolled in at least one Dance, Drama/Theater, Music or Visual Arts class in this school. The last row shows the percentage of students who were enrolled in any Visual and Performing Arts classes in the school.

Percent of Students Enrolled	School	State
Dance	6.0%	2.1%
Drama/Theater	5.2%	3.9%
Music	18.1%	17.5%
Visual Arts	49.5%	31.1%
Total: All Visual and Performing Arts	67.1%	49.3%

N/R - Data Not Reported

Career in Technical Education Programs

The chart below contains percentage of students who were participants in an approved Career and Technical Education Program in this school as well as across the State of New Jersey.

Percent of Students Enrolled	School	State
Participating in CTE	0.4%	19.2%

N/R - Data Not Reported

State of New Jersey

2013-14



35-5550-050

GRADUATION AND POSTSECONDARY

WATCHUNG HILLS REGIONAL HIGH SCHOOL

SOMERSET

108 STIRLING RD

WATCHUNG HILLS REGIONAL

GRADE SPAN 09-12

WARREN, NJ 07059-5772

This section of the performance report presents data about graduation, dropout and post-secondary attendance. The graduation rate is calculated according to the NCLB Cohort methodology as required by the United States Department of Education. Dropout rates are calculated from student-level data submitted by districts for students officially classified as dropouts. The dropout rate is the count of students who dropout in an academic year divided by the school's total enrollment.

The first column - Schoolwide Performance - represents the outcomes for these particular indicators in this school. The second column - Peer School Percentile - indicates how the school's performance compares to its group of peer schools. For example, a school whose peer percentile is 65 in Graduation Rate has a higher Graduation Rate than 65% of its peer group. The third column - Statewide Percentile - indicates how the school's performance compares to schools across the state. The fourth column - Statewide Target - provides the statewide targets for each of these indicators. The Statewide Target for Graduation Rate was established pursuant to NJDOE's NCLB Accountability Workbook. The last column - Met Target - indicates whether the School Performance met or exceeded the statewide target.

The Summary row presents the averages of the peer school percentile, the average of statewide percentile and the percentage of statewide targets met.

Graduation & Post Secondary Indicators	Schoolwide Performance	Peer Percentile	Statewide Percentile	Statewide Targets	Met Target
Overall Graduation Rate	99%	91	92	78%	YES
Dropout Rate	0 %	71	72	2%	YES
SUMMARY - Graduation & Post-Secondary		81	82		100%

Graduation Rate by Subgroup

This table presents for all NCLB-identified subgroups the "4-year Adjusted Graduation Rate." This rate calculates the percentage of students who are awarded a regular, high school diploma within four years of becoming a first-time ninth grader. The rate is adjusted to account for students who 'transfer-in' and for students who are verified as 'transfers-out'.

	School	State Target
Schoolwide	99%	78%
White	99%	
Black	-	
Hispanic	100%	
American Indian	-	
Asian	100%	
Native Hawaiian	-	
Two or More Races	-	
Students with Disability	100%	
Limited English Proficient Students	-	
Economically Disadvantaged Students	-	

Dropout Rate by Subgroup

This table presents for all NCLB-identified subgroups the Dropout rate. This rate calculates the percentage of students who are classified as dropouts divided by the school's total enrollment and by each subgroup enrollment.

	School	State Target
Schoolwide	0%	2%
White	0%	
Black	0%	
Hispanic	.6%	
American Indian	-	
Asian	0%	
Native Hawaiian	-	
Two or More Races	0%	
Students with Disability	0%	
Economically Disadvantaged Students	0%	
Limited English Proficiency	-	



State of New Jersey

2013-14

35-5550-050

GRADUATION AND POSTSECONDARY

SOMERSET

WATCHUNG HILLS REGIONAL

GRADE SPAN 09-12

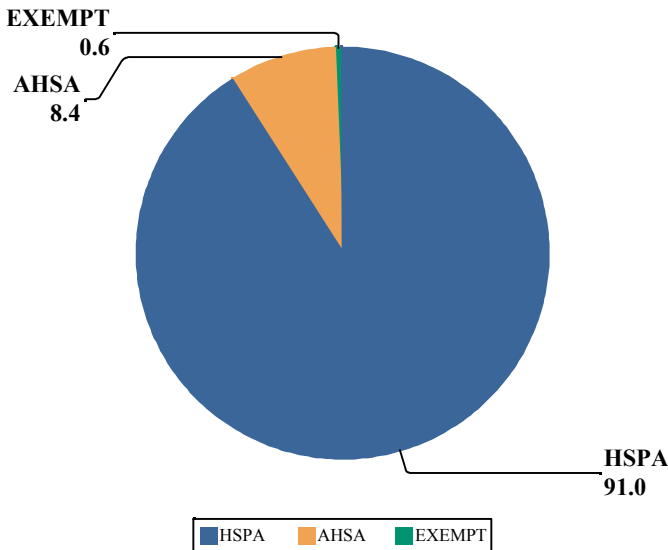
WATCHUNG HILLS REGIONAL HIGH SCHOOL

108 STIRLING RD

WARREN, NJ 07059-5772

Graduation Pathway Rates

This chart presents the percentage of high school graduates who graduated by passing both sections of the HSPA, who were exempt from passing the HSPA, or who demonstrated proficiency through an alternative pathway such as through the Alternative High School Assessment, achievement of the 'Just Proficient Mean' or an appeal process.



Extended Year Graduation Rate

The chart below presents the 4-year and 5-year graduation rate for the prior school year's cohort in addition to the 4-year graduation rate for last year's cohort.

Class of	4-year Rate	5-year Rate
2012	96%	97%
2013	98%	99%
2014	99%	

Postsecondary Enrollment Rates

This chart presents the enrollment rates of this school's high school graduates, 16-months after high school graduation. The data is from the National Student Clearinghouse which reports that it collects student-level enrollment data from 95% of Institutions of Higher Education nationwide.

The last columns indicate, for the schoolwide total and each subgroup, the percentage of postsecondary enrollees that were enrolled in either a 2 year or a 4 year institution.

	Percent Enrolled	Percent in 2 Year	Percent in 4 Year
Schoolwide	85%	13.3%	86.7%
White	84.8%	13%	87%
Black	-	-	-
Hispanic	84.8%	28.6%	71.4%
Asian	83.3%	1.8%	98.2%
American Indian	-	-	-
Native Hawaiian	-	-	-
Two or More Races	-	-	-
Students with Disability	72.9%	21%	79%
Limited English Proficient Students	-	-	-
Economically Disadvantaged Students	-	-	-

State of New Jersey

2013-14



35-5550-050

WITHIN SCHOOL ACHIEVEMENT GAP

WATCHUNG HILLS REGIONAL HIGH SCHOOL

SOMERSET

108 STIRLING RD

WATCHUNG HILLS REGIONAL

GRADE SPAN 09-12

WARREN, NJ 07059-5772

This section of the performance report presents data about the achievement gap that exists within a school - as measured by the difference between the students' scale scores at the 25th and 75th percentile in the school, the so-called Interquartile Range (IQR). Taken together with an understanding of the overall and average achievement levels in the school, the IQR furthers an understanding of the range of student outcomes that exist in a school. A school gap smaller than the state gap indicates that the school's range of student outcomes is narrower than the state's while a school gap larger than the state gap indicates that the school's range of student outcomes is larger than the state's.

High School

HSPA Language Arts 25th %ile vs 75th%ile

This table presents the scale scores associated with students at the bottom (0th percentile), the 25th percentile, the 50th percentile, the 75th percentile and the top (99th percentile) of school's distribution.

Percentile	School Scaled Score	State Scaled Score
99th	274	287
75th	259	250
50th	252	240
25th	242	224
0th	114	100

	Scaled Score Gap - School	Scaled Score Gap - State
25th vs 75th Gap	17	26

High School

HSPA Math 25th %ile vs 75th%ile

This table presents the scale scores associated with students at the bottom (0th percentile), the 25th percentile, the 50th percentile, the 75th percentile and the top (99th percentile) of school's distribution.

Percentile	School Scaled Score	State Scaled Score
99th	272	300
75th	261	253
50th	245	232
25th	222	208
0th	146	132

	Scaled Score Gap - School	Scaled Score Gap - State
25th vs 75th Gap	39	45

State of New Jersey

2013-14



35-5550-050

WATCHUNG HILLS REGIONAL HIGH SCHOOL
108 STIRLING RD
WARREN, NJ 07059-5772

SCHOOL CLIMATE

SOMERSET

WATCHUNG HILLS REGIONAL

GRADE SPAN 09-12

Length of School Day

This table presents the amount of time a school is in session for a typical student on a normal school day.

	School
2013-14	6 Hrs. 45 Mins.

Student Suspension Rate

This table presents the percentage of students who were suspended one or more times during the school year.

	School
2013-14	2.1%

Instructional Time

This table presents the amount of time that a typical student is engaged in instructional activities under the supervision of a certified teacher.

2013-14	School
Full Time	5 Hrs. 36 Mins.
Shared Time	4 Hrs. 51 Mins.

Student Expulsions

This table presents the number of students who were expelled from the school and district during the school year.

	School
2013-14	0

Student to Staff Ratio

This table presents the count of students per faculty member or administrator in the school. All staff are counted in full-time equivalents.

2013-14	School
Faculty	13
Administrators	198

SCHOOL PEER GROUP**WATCHUNG HILLS REGIONAL HIGH SCHOOL****35-5550-050**

This table presents the list of peer schools in alphabetical order by county name that was created specifically for this school (highlighted in yellow). Peer schools are drawn from across the state and represent schools that have similar grade configurations and that are educating students of similar demographic characteristics, as measured by enrollment in Free/Reduced Lunch Programs, Limited English Proficiency or Special Education Programs.

<u>COUNTY NAME</u>	<u>DISTRICT NAME</u>	<u>SCHOOL NAME</u>	<u>CDS CODE</u>	<u>GRAD ESPAN</u>	<u>FRPL</u>	<u>LEP</u>	<u>SpED</u>
BERGEN	NORTHERN VALLEY REGIONAL	NORTHERN VALLEY REGIONAL HIGH SCHOOL AT DEMAREST	03-3710-050	09-12	1.6%	0.8%	20.5%
BERGEN	PASCACK VALLEY REGIONAL	PASCACK VALLEY HIGH SCHOOL	03-3960-050	09-12	2.8%	0.0%	16.8%
BERGEN	RAMSEY BORO	RAMSEY HIGH SCHOOL	03-4310-050	09-12	3.8%	0.4%	15.2%
BERGEN	RIVER DELL REGIONAL	RIVER DELL REGIONAL HIGH SCHOOL	03-4405-050	09-12	0.7%	1.0%	14.2%
BERGEN	RUTHERFORD BORO	RUTHERFORD HIGH SCHOOL	03-4600-050	09-12	2.6%	0.5%	10.1%
BERGEN	WALDWICK BORO	WALDWICK HIGH SCHOOL	03-5410-030	09-12	1.3%	2.2%	14.7%
ESSEX	CALDWELL-WEST CALDWELL	JAMES CALDWELL HIGH SCHOOL	13-0660-050	09-12	4.8%	0.0%	15.5%
ESSEX	MILLBURN TWP	MILLBURN HIGH SCHOOL	13-3190-050	09-12	2.2%	1.4%	13.9%
ESSEX	VERONA BORO	VERONA HIGH SCHOOL	13-5370-050	09-12	1.2%	0.7%	10.8%
ESSEX	WEST ESSEX REGIONAL	WEST ESSEX HIGH SCHOOL	13-5630-050	09-12	2.7%	0.2%	13.7%
HUNTERDON	N HUNT/VOORHEES REGIONAL	NORTH HUNTERDON HIGH SCHOOL	19-3660-050	09-12	2.5%	0.2%	13.3%
HUNTERDON	N HUNT/VOORHEES REGIONAL	VOORHEES HIGH SCHOOL	19-3660-060	09-12	5.2%	0.0%	14.6%
MERCER	HOPEWELL VALLEY REGIONAL	HOPEWELL VALLEY CENTRAL HIGH SCHOOL	21-2280-030	09-12	2.5%	0.0%	9.1%
MERCER	ROBBINSVILLE TWP	ROBBINSVILLE HIGH SCHOOL	21-5510-030	09-12	4.8%	0.1%	11.5%
MERCER	W WINDSOR-PLAINSBORO REG	WEST WINDSOR-PLAINSBORO HIGH SCHOOL NORTH	21-5715-025	09-12	4.6%	0.0%	12.4%
MONMOUTH	FREEHOLD REGIONAL	MARLBORO HIGH SCHOOL	25-1650-080	09-12	4.5%	0.0%	11.3%
MONMOUTH	HOLMDEL TWP	HOLMDEL HIGH SCHOOL	25-2230-020	09-12	2.5%	0.9%	13.2%
MONMOUTH	SHORE REGIONAL	SHORE REGIONAL HIGH SCHOOL	25-4760-050	09-12	2.9%	0.2%	13.7%
MORRIS	HANOVER PARK REGIONAL	HANOVER PARK HIGH SCHOOL	27-1990-050	09-12	3.0%	0.6%	12.6%
MORRIS	HANOVER PARK REGIONAL	WHIPPANY PARK HIGH SCHOOL	27-1990-070	09-12	1.9%	0.6%	12.6%
MORRIS	MONTVILLE TWP	MONTVILLE TOWNSHIP HIGH SCHOOL	27-3340-010	09-12	3.6%	0.3%	12.2%
MORRIS	PEQUANNOCK TWP	PEQUANNOCK TOWNSHIP HIGH SCHOOL	27-4080-050	09-12	4.6%	0.4%	15.0%
MORRIS	SCH DIST OF THE CHATHAMS	CHATHAM HIGH SCHOOL	27-0785-010	09-12	2.2%	0.6%	14.0%
MORRIS	WEST MORRIS REGIONAL	WEST MORRIS MENDHAM HIGH SCHOOL	27-5660-050	09-12	0.8%	1.2%	14.9%
SOMERSET	MONTGOMERY TWP	MONTGOMERY HIGH SCHOOL	35-3320-030	09-12	3.8%	0.7%	11.3%
SOMERSET	WATCHUNG HILLS REGIONAL	WATCHUNG HILLS REGIONAL HIGH SCHOOL	35-5550-050	09-12	3.1%	0.5%	15.5%
SUSSEX	SPARTA TWP	SPARTA HIGH SCHOOL	37-4960-050	09-12	3.5%	0.2%	11.2%
UNION	BERKELEY HEIGHTS TWP	GOVERNOR LIVINGSTON HIGH SCHOOL	39-0310-005	09-12	1.9%	0.3%	11.7%
UNION	CRANFORD TWP	CRANFORD HIGH SCHOOL	39-0980-030	09-12	4.0%	0.3%	17.1%
UNION	NEW PROVIDENCE BORO	NEW PROVIDENCE HIGH SCHOOL	39-3560-050	09-12	4.3%	0.5%	11.0%
UNION	WESTFIELD TOWN	WESTFIELD SENIOR HIGH SCHOOL	39-5730-050	09-12	3.0%	0.2%	16.6%