

The New Jersey Department of Education (NJDOE) is pleased to present these annual reports of School Performance. These reports are designed to inform parents, educators and communities about how well a school is performing and preparing its students for college and careers.

In particular, the School Performance Reports seek to:

- **Focus** attention on metrics that are indicative of college and career readiness.
- **Benchmark** a school's performance against other peer schools that are educating similar students, against statewide outcomes, and against state targets to illuminate and build upon a school's strengths and identify areas for improvement.
- **Improve** educational outcomes for students by providing both longitudinal and growth data so that progress can be measured as part of an individual school's efforts to engage in continuous improvement.

While the New Jersey School Performance Reports seek to bring more information to educators and stakeholders about the performance of schools, they do not seek to distill the performance of schools into a single metric, a single score, or a simplified conclusion. Instead, the intention is that educators and stakeholders will engage in deep, lengthy conversations about the full range of the data presented. As educators know well, measuring school performance is both an art and a science. While the School Performance Report brings attention to important student outcomes, NJDOE does not collect data about other essential elements of a school, such as the provision of opportunities to participate and excel in extracurricular activities; the development of non-cognitive skills like time management and perseverance; the pervasiveness of a positive school culture or climate; or the attainment of other employability and technical skills, as many of these data are beyond both the capacity and resources of schools to measure and collect well.

To learn more about New Jersey's school accountability system, please visit: <http://www.nj.gov/education/educators/>.

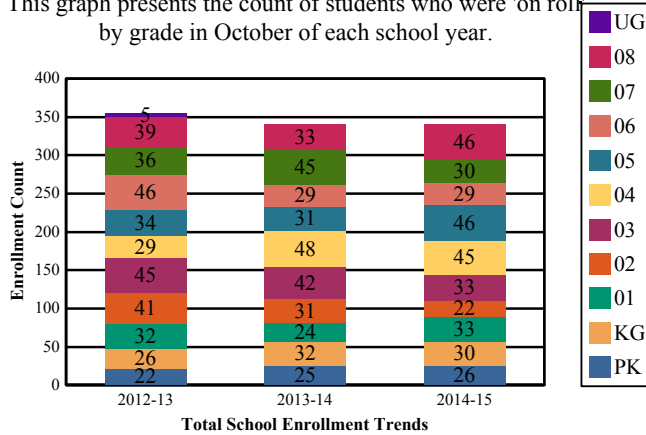
DEMOGRAPHIC INFORMATION

**CUMBERLAND
DEERFIELD TWP**

GRADE SPAN PK-08

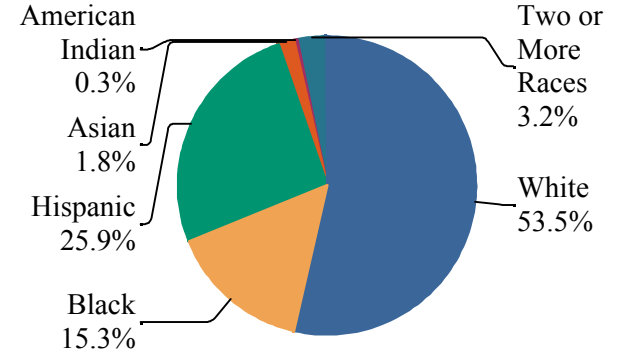
Enrollment by Grade

This graph presents the count of students who were 'on roll' by grade in October of each school year.



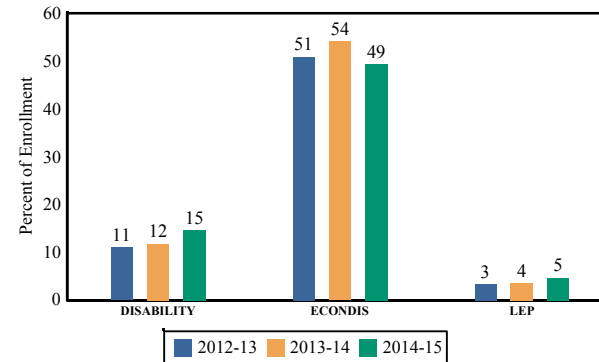
Enrollment by Ethnic/Racial Subgroup

This graph presents the percentages of enrollment for each subgroup defined by the No Child Left Behind Act of 2001.



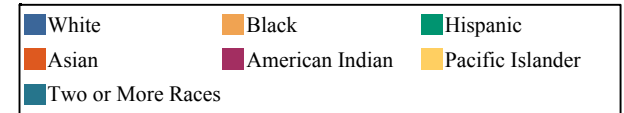
Enrollment Trends by Program Participation

This graph presents the percentages of students by program participation who were 'on roll' in October of each school year.



Current Year Enrollment by Program Participation

2014-15	Count of Students	% of Enrollment
Students with Disability	50	15%
Economically Disadvantaged Students	168	49.4%
English Language Learners	16	4.7%



Language Diversity

This table presents the percentage of students who primarily speak each language in their home.

2014-15	Percent
English	90.9%
Spanish	7.6%
Gujarati	1.5%

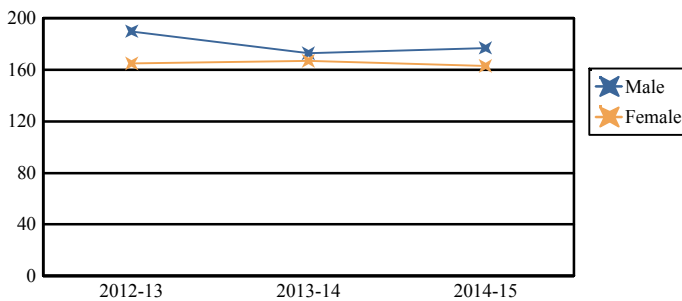
Note: "UG" represents the count of students who are 'on roll' in this school but who are educated in ungraded classrooms, meaning that the classrooms may contain students from multiple grade levels.

Total School Enrollment

2012-13	355
2013-14	340
2014-15	340

Enrollment by Gender

This graph presents the count of students by gender who were 'on roll' in October of each school year.



	Male	Female
2012-13	190	165
2013-14	173	167
2014-15	177	163

ACADEMIC ACHIEVEMENT

**CUMBERLAND
DEERFIELD TWP**

GRADE SPAN PK-08

**DEERFIELD TOWNSHIP SCHOOL DISTRICT
419 MORTON AVE
ROSENHAYN, NJ 08352-0375**

The Academic Achievement section measures the content knowledge that students have in English Language Arts/Literacy (ELA/L) and Math as demonstrated in the 2014-2015 *Partnership for Assessment of Readiness for College and Careers* (PARCC) assessments. The below chart consist of three columns. The first column - Schoolwide Performance - includes the percentage of students in ELA/L and Math who met or exceeded grade level expectations. The middle column - Peer School Percentile - indicates how the school's outcomes compared to its peers. The last column - Statewide Percentile - indicates how the school's outcomes compared to schools across the state.

Academic Achievement Indicators	Schoolwide Performance	Peer Percentile	State Percentile
English Language Arts/Literacy Met or Exceeded Expectation	32%	13	25
Math Met or Exceeded Expectation	23%		

ESEA Waiver - English Language Arts/Literacy

This table presents, for each subgroup in the school, the total number of valid test scores, the percentage of students who met or exceeded expectations, the assessment participation goal, and the participation rate. The participation goal is established as 95% by the United States Department of Education.

Subgroups	Valid Scores	% Meeting Standards	Participation Goal	Participation Rate	Met Participation?
Schoolwide	202	32.2%	95%	95.1%	YES
White	107	40.2%	95%	94.8%	YES
African American	31	19.4%	95%	92.9%	YES*
Hispanic	53	24.5%	95%	98.2%	YES
American Indian	-	-	--	--	--
Asian	-	-	--	--	--
Two or More Races	-	-	--	--	--
Students with Disability	35	11.4%	95%	88.1%	YES*
English Language Learners	-	-	--	--	--
Economically Disadvantaged Students	103	23.3%	95%	92.5%	YES*

YES* = Met Participation Rate (Participation Averaging applied)

Data is presented for subgroups when the count is high enough under ESEA Waiver suppression rules.

ACADEMIC ACHIEVEMENT

CUMBERLAND
DEERFIELD TWP

GRADE SPAN PK-08

DEERFIELD TOWNSHIP SCHOOL DISTRICT
419 MORTON AVE
ROSENHAYN, NJ 08352-0375

ESEA Waiver - Math

This table presents, for each subgroup in the school, the total number of valid test scores, the percentage of students who met or exceeded expectations, the assessment participation goal, and the participation rate. The participation goal is established as 95% by the United States Department of Education.

Subgroups	Valid Scores	% Meeting Standards	Participation Goal	Participation Rate	Met Participation?
Schoolwide	198	23.2%	95%	93.4%	YES*
White	104	28.9%	95%	92.2%	YES*
African American	30	16.7%	95%	90.5%	YES*
Hispanic	53	13.2%	95%	98.2%	YES
American Indian	-	-	--	--	--
Asian	-	-	--	--	--
Two or More Races	-	-	--	--	--
Students with Disability	-	-	--	--	--
English Learner Students	-	-	--	--	--
Economically Disadvantaged Students	100	15%	95%	90%	YES*

YES* = Met Participation Rate (Participation Averaging applied)

Data is presented for subgroups when the count is high enough under ESEA Waiver suppression rules.

PARCC Performance Level

The PARCC assesses how well students have learned grade-level material in English Language Arts/Literacy (ELA/L) and Math. The tests include questions that measure students' fundamental skills and knowledge, and require them to think critically, solve problems and support or explain their answers.

The PARCC reports students' overall scale scores that range from 650 to 850. To determine whether students have met academic expectations for their grade level/course in ELA/L and Math, students' overall scale scores are categorized into five Performance Levels. Students performing at levels 4 and 5 (met or exceeded expectations) have demonstrated readiness for the next grade level/course, and are on track for college and careers.

Five Performance Levels				
Level 1: Did Not Yet Meet Expectations <i>(Min. 650)</i>	Level 2: Partially Met Expectations	Level 3: Approached Expectations	Level 4: Met Expectations	Level 5: Exceeded Expectations <i>(Max. 850)</i>

ACADEMIC ACHIEVEMENT

CUMBERLAND
DEERFIELD TWP

DEERFIELD TOWNSHIP SCHOOL DISTRICT
419 MORTON AVE
ROSENHAYN, NJ 08352-0375

GRADE SPAN PK-08

PARCC ELA Performance Distribution - Grade - 03

This table presents the grade level outcomes, as measured by PARCC, in all five performance levels for all subgroups. PARCC consists of five performance levels: Level 1 - Did not yet meet grade-level expectations, Level 2 -Partially met expectations, Level 3 - Approached expectations, Level 4 - Met expectations, and Level 5 - Exceeded expectations.

Subgroup	Valid Scores	Mean Scale Score	State Mean Scale Score	% Level_1	% Level_2	% Level_3	% Level_4	% Level_5	% Met/ Exceeded Expectation	State % Met/Exceeded Expectation
Schoolwide	27	732	744	19%	22%	26%	30%	4%	33%	44%
White	14	729	753	36%	7%	21%	29%	7%	36%	55%
African American	-	-	725	-	-	-	-	-	-	26%
Hispanic	-	-	727	-	-	-	-	-	-	26%
American Indian	-	-	738	-	-	-	-	-	-	40%
Asian	-	-	769	-	-	-	-	-	-	70%
Two or More Races	-	-	751	-	-	-	-	-	-	53%
Students with Disability	-	-	718	-	-	-	-	-	-	24%
English Language Learners	-	-	709	-	-	-	-	-	-	11%
Economically Disadvantaged Students	16	733	724	6%	31%	25%	38%	0%	38%	24%

ACADEMIC ACHIEVEMENT

CUMBERLAND
DEERFIELD TWP

GRADE SPAN PK-08

DEERFIELD TOWNSHIP SCHOOL DISTRICT
419 MORTON AVE
ROSENHAYN, NJ 08352-0375

PARCC ELA Performance Distribution - Grade - 04

This table presents the grade level outcomes, as measured by PARCC, in all five performance levels for all subgroups. PARCC consists of five performance levels: Level 1 - Did not yet meet grade-level expectations, Level 2 -Partially met expectations, Level 3 - Approached expectations, Level 4 - Met expectations, and Level 5 - Exceeded expectations.

Subgroup	Valid Scores	Mean Scale Score	State Mean Scale Score	% Level_1	% Level_2	% Level_3	% Level_4	% Level_5	% Met/ Exceeded Expectation	State % Met/Exceeded Expectation
Schoolwide	41	736	751	15%	12%	41%	29%	2%	32%	52%
White	23	744	758	4%	9%	39%	43%	4%	48%	63%
African American	-	-	733	-	-	-	-	-	-	30%
Hispanic	-	-	737	-	-	-	-	-	-	35%
American Indian	-	-	746	-	-	-	-	-	-	52%
Asian	-	-	773	-	-	-	-	-	-	78%
Two or More Races	-	-	760	-	-	-	-	-	-	62%
Students with Disability	-	-	725	-	-	-	-	-	-	25%
English Language Learners	-	-	717	-	-	-	-	-	-	15%
Economically Disadvantaged Students	-	-	734	-	-	-	-	-	-	31%

ACADEMIC ACHIEVEMENT

CUMBERLAND
DEERFIELD TWP

GRADE SPAN PK-08

DEERFIELD TOWNSHIP SCHOOL DISTRICT
419 MORTON AVE
ROSENHAYN, NJ 08352-0375

PARCC ELA Performance Distribution - Grade - 05

This table presents the grade level outcomes, as measured by PARCC, in all five performance levels for all subgroups. PARCC consists of five performance levels: Level 1 - Did not yet meet grade-level expectations, Level 2 -Partially met expectations, Level 3 - Approached expectations, Level 4 - Met expectations, and Level 5 - Exceeded expectations.

Subgroup	Valid Scores	Mean Scale Score	State Mean Scale Score	% Level_1	% Level_2	% Level_3	% Level_4	% Level_5	% Met/ Exceeded Expectation	State % Met/Exceeded Expectation
Schoolwide	45	733	751	9%	31%	27%	33%	0%	33%	53%
White	21	740	757	5%	24%	29%	43%	0%	43%	62%
African American	-	-	734	-	-	-	-	-	-	31%
Hispanic	15	731	737	7%	40%	27%	27%	0%	27%	35%
American Indian	-	-	746	-	-	-	-	-	-	45%
Asian	-	-	771	-	-	-	-	-	-	77%
Two or More Races	-	-	758	-	-	-	-	-	-	61%
Students with Disability	-	-	723	-	-	-	-	-	-	21%
English Language Learners	-	-	717	-	-	-	-	-	-	15%
Economically Disadvantaged Students	26	729	734	15%	31%	23%	31%	0%	31%	31%

ACADEMIC ACHIEVEMENT

CUMBERLAND
DEERFIELD TWP

GRADE SPAN PK-08

DEERFIELD TOWNSHIP SCHOOL DISTRICT
419 MORTON AVE
ROSENHAYN, NJ 08352-0375

PARCC ELA Performance Distribution - Grade - 06

This table presents the grade level outcomes, as measured by PARCC, in all five performance levels for all subgroups. PARCC consists of five performance levels: Level 1 - Did not yet meet grade-level expectations, Level 2 -Partially met expectations, Level 3 - Approached expectations, Level 4 - Met expectations, and Level 5 - Exceeded expectations.

Subgroup	Valid Scores	Mean Scale Score	State Mean Scale Score	% Level_1	% Level_2	% Level_3	% Level_4	% Level_5	% Met/ Exceeded Expectation	State % Met/Exceeded Expectation
Schoolwide	26	739	749	8%	15%	50%	27%	0%	27%	50%
White	12	746	755	0%	8%	50%	42%	0%	42%	59%
African American	-	-	732	-	-	-	-	-	-	29%
Hispanic	-	-	736	-	-	-	-	-	-	34%
American Indian	-	-	743	-	-	-	-	-	-	39%
Asian	-	-	770	-	-	-	-	-	-	77%
Two or More Races	-	-	753	-	-	-	-	-	-	57%
Students with Disability	-	-	718	-	-	-	-	-	-	17%
English Language Learners	-	-	711	-	-	-	-	-	-	11%
Economically Disadvantaged Students	12	737	733	17%	8%	50%	25%	0%	25%	30%

ACADEMIC ACHIEVEMENT

CUMBERLAND
DEERFIELD TWP

DEERFIELD TOWNSHIP SCHOOL DISTRICT
419 MORTON AVE
ROSENHAYN, NJ 08352-0375

GRADE SPAN PK-08

PARCC ELA Performance Distribution - Grade - 07

This table presents the grade level outcomes, as measured by PARCC, in all five performance levels for all subgroups. PARCC consists of five performance levels: Level 1 - Did not yet meet grade-level expectations, Level 2 -Partially met expectations, Level 3 - Approached expectations, Level 4 - Met expectations, and Level 5 - Exceeded expectations.

Subgroup	Valid Scores	Mean Scale Score	State Mean Scale Score	% Level_1	% Level_2	% Level_3	% Level_4	% Level_5	% Met/ Exceeded Expectation	State % Met/Exceeded Expectation
Schoolwide	26	729	750	15%	35%	23%	23%	4%	27%	53%
White	18	732	757	11%	33%	22%	28%	6%	33%	61%
African American	-	-	730	-	-	-	-	-	-	31%
Hispanic	-	-	736	-	-	-	-	-	-	36%
American Indian	-	-	746	-	-	-	-	-	-	49%
Asian	-	-	777	-	-	-	-	-	-	80%
Two or More Races	-	-	756	-	-	-	-	-	-	58%
Students with Disability	-	-	713	-	-	-	-	-	-	18%
English Language Learners	-	-	703	-	-	-	-	-	-	11%
Economically Disadvantaged Students	13	724	733	15%	38%	31%	15%	0%	15%	33%

ACADEMIC ACHIEVEMENT

CUMBERLAND
DEERFIELD TWP

GRADE SPAN PK-08

DEERFIELD TOWNSHIP SCHOOL DISTRICT
419 MORTON AVE
ROSENHAYN, NJ 08352-0375

PARCC ELA Performance Distribution - Grade - 08

This table presents the grade level outcomes, as measured by PARCC, in all five performance levels for all subgroups. PARCC consists of five performance levels: Level 1 - Did not yet meet grade-level expectations, Level 2 -Partially met expectations, Level 3 - Approached expectations, Level 4 - Met expectations, and Level 5 - Exceeded expectations.

Subgroup	Valid Scores	Mean Scale Score	State Mean Scale Score	% Level_1	% Level_2	% Level_3	% Level_4	% Level_5	% Met/ Exceeded Expectation	State % Met/Exceeded Expectation
Schoolwide	37	745	750	3%	16%	43%	32%	5%	38%	53%
White	19	742	757	5%	21%	37%	26%	11%	37%	61%
African American	-	-	730	-	-	-	-	-	-	31%
Hispanic	-	-	735	-	-	-	-	-	-	37%
American Indian	-	-	741	-	-	-	-	-	-	49%
Asian	-	-	778	-	-	-	-	-	-	80%
Two or More Races	-	-	753	-	-	-	-	-	-	55%
Students with Disability	-	-	713	-	-	-	-	-	-	16%
English Language Learners	-	-	701	-	-	-	-	-	-	9%
Economically Disadvantaged Students	18	738	732	0%	28%	50%	22%	0%	22%	34%

ACADEMIC ACHIEVEMENT

CUMBERLAND
DEERFIELD TWP

GRADE SPAN PK-08

DEERFIELD TOWNSHIP SCHOOL DISTRICT
419 MORTON AVE
ROSENHAYN, NJ 08352-0375

PARCC MATH - Performance Distribution - Grade - 03

This table presents the grade level outcomes, as measured by PARCC, in all five performance levels for all subgroups. PARCC consists of five performance levels: Level 1 - Did not yet meet grade-level expectations, Level 2 -Partially met expectations, Level 3 - Approached expectations, Level 4 - Met expectations, and Level 5 - Exceeded expectations.

Subgroup	Valid Scores	Mean Scale Score	State Mean Scale Score	% Level_1	% Level_2	% Level_3	% Level_4	% Level_5	% Met/ Exceeded Expectation	State % Met/Exceeded Expectation
Schoolwide	23	743	746	4%	4%	65%	22%	4%	26%	46%
White	11	747	752	9%	9%	36%	36%	9%	45%	56%
African American	-	-	728	-	-	-	-	-	-	25%
Hispanic	-	-	733	-	-	-	-	-	-	28%
American Indian	-	-	742	-	-	-	-	-	-	41%
Asian	-	-	772	-	-	-	-	-	-	77%
Two or More Races	-	-	751	-	-	-	-	-	-	54%
Students with Disability	-	-	727	-	-	-	-	-	-	27%
English Language Learners	-	-	724	-	-	-	-	-	-	17%
Economically Disadvantaged Students	13	736	730	8%	0%	77%	15%	0%	15%	26%

ACADEMIC ACHIEVEMENT

CUMBERLAND
DEERFIELD TWP

GRADE SPAN PK-08

DEERFIELD TOWNSHIP SCHOOL DISTRICT
419 MORTON AVE
ROSENHAYN, NJ 08352-0375

PARCC MATH - Performance Distribution - Grade - 04

This table presents the grade level outcomes, as measured by PARCC, in all five performance levels for all subgroups. PARCC consists of five performance levels: Level 1 - Did not yet meet grade-level expectations, Level 2 -Partially met expectations, Level 3 - Approached expectations, Level 4 - Met expectations, and Level 5 - Exceeded expectations.

Subgroup	Valid Scores	Mean Scale Score	State Mean Scale Score	% Level_1	% Level_2	% Level_3	% Level_4	% Level_5	% Met/ Exceeded Expectation	State % Met/Exceeded Expectation
Schoolwide	41	729	744	5%	41%	41%	12%	0%	12%	42%
White	23	731	749	4%	43%	35%	17%	0%	17%	50%
African American	-	-	727	-	-	-	-	-	-	20%
Hispanic	-	-	732	-	-	-	-	-	-	26%
American Indian	-	-	740	-	-	-	-	-	-	40%
Asian	-	-	769	-	-	-	-	-	-	75%
Two or More Races	-	-	750	-	-	-	-	-	-	52%
Students with Disability	-	-	724	-	-	-	-	-	-	21%
English Language Learners	-	-	722	-	-	-	-	-	-	15%
Economically Disadvantaged Students	-	-	730	-	-	-	-	-	-	23%

ACADEMIC ACHIEVEMENT

CUMBERLAND
DEERFIELD TWP

GRADE SPAN PK-08

DEERFIELD TOWNSHIP SCHOOL DISTRICT
419 MORTON AVE
ROSENHAYN, NJ 08352-0375

PARCC MATH - Performance Distribution - Grade - 05

This table presents the grade level outcomes, as measured by PARCC, in all five performance levels for all subgroups. PARCC consists of five performance levels: Level 1 - Did not yet meet grade-level expectations, Level 2 -Partially met expectations, Level 3 - Approached expectations, Level 4 - Met expectations, and Level 5 - Exceeded expectations.

Subgroup	Valid Scores	Mean Scale Score	State Mean Scale Score	% Level_1	% Level_2	% Level_3	% Level_4	% Level_5	% Met/ Exceeded Expectation	State % Met/Exceeded Expectation
Schoolwide	45	734	744	4%	33%	42%	20%	0%	20%	42%
White	21	735	749	0%	43%	29%	29%	0%	29%	49%
African American	-	-	728	-	-	-	-	-	-	21%
Hispanic	15	734	733	7%	27%	53%	13%	0%	13%	26%
American Indian	-	-	745	-	-	-	-	-	-	46%
Asian	-	-	768	-	-	-	-	-	-	74%
Two or More Races	-	-	749	-	-	-	-	-	-	50%
Students with Disability	-	-	724	-	-	-	-	-	-	19%
English Language Learners	-	-	724	-	-	-	-	-	-	17%
Economically Disadvantaged Students	26	731	731	8%	35%	46%	12%	0%	12%	23%

ACADEMIC ACHIEVEMENT

CUMBERLAND
DEERFIELD TWP

GRADE SPAN PK-08

DEERFIELD TOWNSHIP SCHOOL DISTRICT
419 MORTON AVE
ROSENHAYN, NJ 08352-0375

PARCC MATH - Performance Distribution - Grade - 06

This table presents the grade level outcomes, as measured by PARCC, in all five performance levels for all subgroups. PARCC consists of five performance levels: Level 1 - Did not yet meet grade-level expectations, Level 2 -Partially met expectations, Level 3 - Approached expectations, Level 4 - Met expectations, and Level 5 - Exceeded expectations.

Subgroup	Valid Scores	Mean Scale Score	State Mean Scale Score	% Level_1	% Level_2	% Level_3	% Level_4	% Level_5	% Met/ Exceeded Expectation	State % Met/Exceeded Expectation
Schoolwide	26	736	743	0%	35%	35%	31%	0%	31%	42%
White	12	745	749	0%	17%	33%	50%	0%	50%	50%
African American	-	-	726	-	-	-	-	-	-	19%
Hispanic	-	-	731	-	-	-	-	-	-	25%
American Indian	-	-	740	-	-	-	-	-	-	35%
Asian	-	-	768	-	-	-	-	-	-	75%
Two or More Races	-	-	745	-	-	-	-	-	-	44%
Students with Disability	-	-	718	-	-	-	-	-	-	15%
English Language Learners	-	-	718	-	-	-	-	-	-	14%
Economically Disadvantaged Students	12	730	729	0%	42%	42%	17%	0%	17%	23%

ACADEMIC ACHIEVEMENT

CUMBERLAND
DEERFIELD TWP

GRADE SPAN PK-08

DEERFIELD TOWNSHIP SCHOOL DISTRICT
419 MORTON AVE
ROSENHAYN, NJ 08352-0375

PARCC MATH - Performance Distribution - Grade - 07

This table presents the grade level outcomes, as measured by PARCC, in all five performance levels for all subgroups. PARCC consists of five performance levels: Level 1 - Did not yet meet grade-level expectations, Level 2 -Partially met expectations, Level 3 - Approached expectations, Level 4 - Met expectations, and Level 5 - Exceeded expectations.

Subgroup	Valid Scores	Mean Scale Score	State Mean Scale Score	% Level_1	% Level_2	% Level_3	% Level_4	% Level_5	% Met/ Exceeded Expectation	State % Met/Exceeded Expectation
Schoolwide	26	740	740	4%	23%	42%	31%	0%	31%	38%
White	18	741	745	6%	17%	44%	33%	0%	33%	46%
African American	-	-	725	-	-	-	-	-	-	17%
Hispanic	-	-	730	-	-	-	-	-	-	23%
American Indian	-	-	734	-	-	-	-	-	-	32%
Asian	-	-	760	-	-	-	-	-	-	68%
Two or More Races	-	-	742	-	-	-	-	-	-	43%
Students with Disability	-	-	715	-	-	-	-	-	-	11%
English Language Learners	-	-	717	-	-	-	-	-	-	11%
Economically Disadvantaged Students	13	735	728	0%	31%	54%	15%	0%	15%	21%

ACADEMIC ACHIEVEMENT

CUMBERLAND
DEERFIELD TWP

GRADE SPAN PK-08

DEERFIELD TOWNSHIP SCHOOL DISTRICT
419 MORTON AVE
ROSENHAYN, NJ 08352-0375

PARCC MATH - Performance Distribution - Grade - 08

This table presents the grade level outcomes, as measured by PARCC, in all five performance levels for all subgroups. PARCC consists of five performance levels: Level 1 - Did not yet meet grade-level expectations, Level 2 -Partially met expectations, Level 3 - Approached expectations, Level 4 - Met expectations, and Level 5 - Exceeded expectations.

Subgroup	Valid Scores	Mean Scale Score	State Mean Scale Score	% Level_1	% Level_2	% Level_3	% Level_4	% Level_5	% Met/ Exceeded Expectation	State % Met/Exceeded Expectation
Schoolwide	37	737	726	8%	30%	35%	27%	0%	27%	24%
White	19	728	732	16%	32%	37%	16%	0%	16%	29%
African American	-	-	715	-	-	-	-	-	-	14%
Hispanic	-	-	721	-	-	-	-	-	-	19%
American Indian	-	-	722	-	-	-	-	-	-	15%
Asian	-	-	744	-	-	-	-	-	-	46%
Two or More Races	-	-	724	-	-	-	-	-	-	24%
Students with Disability	-	-	705	-	-	-	-	-	-	9%
English Language Learners	-	-	706	-	-	-	-	-	-	10%
Economically Disadvantaged Students	18	735	719	11%	39%	17%	33%	0%	33%	17%

ACADEMIC ACHIEVEMENT

CUMBERLAND
DEERFIELD TWP

GRADE SPAN PK-08

DEERFIELD TOWNSHIP SCHOOL DISTRICT
419 MORTON AVE
ROSENHAYN, NJ 08352-0375

2015 National Assessment Educational Progress (NAEP)

The National Assessment of Educational Progress (NAEP) is the largest national assessment of what our nation’s students know and can do. NAEP assesses fourth-, eighth-, and twelfth-grade students in subjects such as reading, mathematics, science, and writing. The reporting of NAEP scores on state report cards is a federal mandate. The results of NAEP are also published as the Nation’s Report Card, and are available for the nation, states, and, in some cases, urban districts. The NAEP scores on the report card include grades four and eight 2015 reading and math scores for New Jersey which are the last scores published.

For subgroup outcomes, visit:

- Reading Grade 4 <http://www.nj.gov/education/pr/1415/naep/naep4read.html>
- Reading Grade 8 <http://www.nj.gov/education/pr/1415/naep/naep8read.html>
- Math Grade 4 <http://www.nj.gov/education/pr/1415/naep/naep4math.html>
- Math Grade 8 <http://www.nj.gov/education/pr/1415/naep/naep8math.html>

For more information, visit <http://nces.ed.gov/nationsreportcard/>

Proficiency Percentages

Subject	Grade	State/Nation	Below Basic	Basic	Proficient	Advanced
Reading	Grade 4	State (NJ)	25	33	31	12
	Grade 4	Nation	31	33	27	9
	Grade 8	State (NJ)	20	39	35	6
	Grade 8	Nation	24	42	31	4
Math	Grade 4	State (NJ)	14	39	38	9
	Grade 4	Nation	18	42	33	7
	Grade 8	State (NJ)	21	32	30	16
	Grade 8	Nation	29	38	25	8

ACADEMIC ACHIEVEMENT

CUMBERLAND
DEERFIELD TWP

GRADE SPAN PK-08

11-1020-040
DEERFIELD TOWNSHIP SCHOOL DISTRICT
419 MORTON AVE
ROSENHAYN, NJ 08352-0375

NJASK Results - Science Grade Level - 04

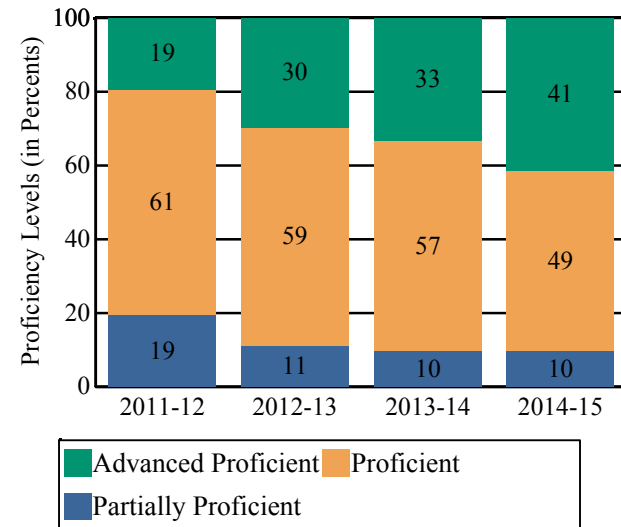
This table presents the grade level proficiency results, as measured by NJASK, in Advanced Proficient, Proficient, and Partially Proficient categories for all appropriate subgroups.

Subgroups	Advanced Proficient	Proficient	Partially Proficient
Schoolwide	41%	49%	10%
White	61%	39%	0%
African American	-	-	-
Hispanic	-	-	-
American Indian	-	-	-
Asian	-	-	-
Two or More Races	-	-	-
Students with Disability	-	-	-
English Language Learners	-	-	-
Economically Disadvantaged Students	28%	56%	17%

Data is presented for subgroups when the count is high enough under ESEA Waiver suppression rules.

NJASK Proficiency Trends - Science - Grade Level - 04

This graph presents the grade level outcomes in the categories of Advanced Proficient, Proficient, and Partially Proficient over the last four years.



ACADEMIC ACHIEVEMENT

CUMBERLAND
DEERFIELD TWP

GRADE SPAN PK-08

11-1020-040
DEERFIELD TOWNSHIP SCHOOL DISTRICT
419 MORTON AVE
ROSENHAYN, NJ 08352-0375

NJASK Results - Science Grade Level - 08

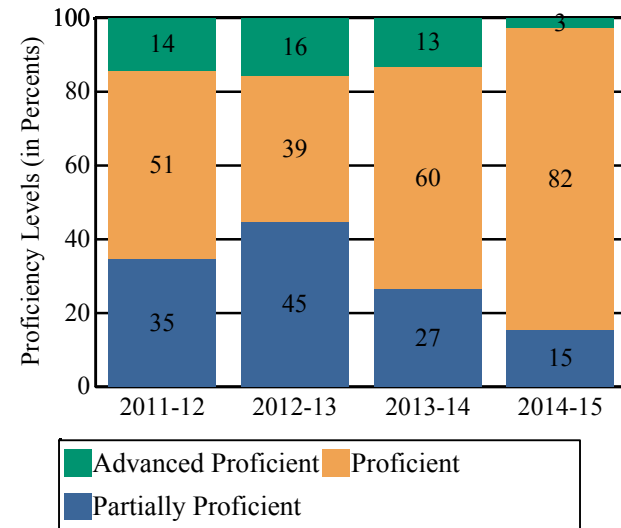
This table presents the grade level proficiency results, as measured by NJASK, in Advanced Proficient, Proficient, and Partially Proficient categories for all appropriate subgroups.

Subgroups	Advanced Proficient	Proficient	Partially Proficient
Schoolwide	3%	82%	15%
White	5%	77%	18%
African American	-	-	-
Hispanic	-	-	-
American Indian	-	-	-
Asian	-	-	-
Two or More Races	-	-	-
Students with Disability	-	-	-
English Language Learners	-	-	-
Economically Disadvantaged Students	0%	74%	26%

Data is presented for subgroups when the count is high enough under ESEA Waiver suppression rules.

NJASK Proficiency Trends - Science - Grade Level - 08

This graph presents the grade level outcomes in the categories of Advanced Proficient, Proficient, and Partially Proficient over the last four years.



COLLEGE AND CAREER READINESS

CUMBERLAND
DEERFIELD TWP

GRADE SPAN PK-08

DEERFIELD TOWNSHIP SCHOOL DISTRICT
419 MORTON AVE
ROSENHAYN, NJ 08352-0375

Students in both elementary and middle schools begin to demonstrate college readiness behaviors long before they even enter high school. Among the behaviors that research has shown to be indicative of successfully graduating high school is regularly attending school. For all elementary and middle schools, this includes the percentage of students that are chronically absent each year, defined as missing more than 10% of possible school days. Also presented is the percentage of students participating in Visual and Performing Arts coursework and Algebra I course outcomes.

Algebra I Course Enrollment

This table presents the count of students in this school who were reported in the Algebra I course code in NJSMART and the count of students who took the Algebra I test of PARCC.

Algebra I Enrollment Count	Algebra I PARCC Test Count
0	0

Algebra I Test Taking

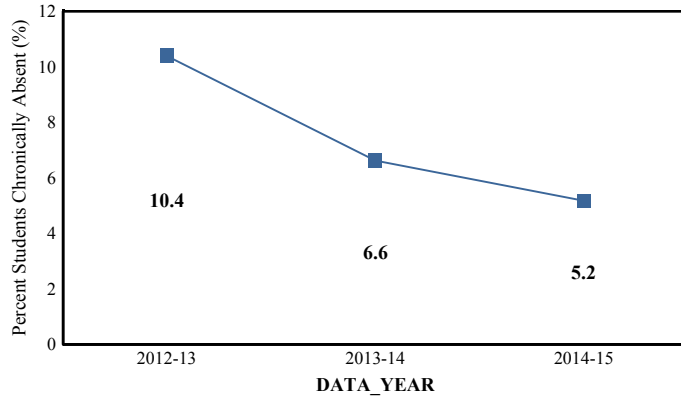
This table presents the percentage of students, as reported in NJSMART, who earned a C or higher in their Algebra I course and the percentage of students who met or exceeded expectation on the Algebra I test of PARCC.

Algebra I Percent C or Better	Algebra I PARCC Percent Met or Exceeded Expectation
0.0%	0.0%

- Data Suppressed to protect the confidentiality of students

Chronic Absenteeism Trend

This graph presents the percentage of the enrolled students who were chronically absent for the past three years.

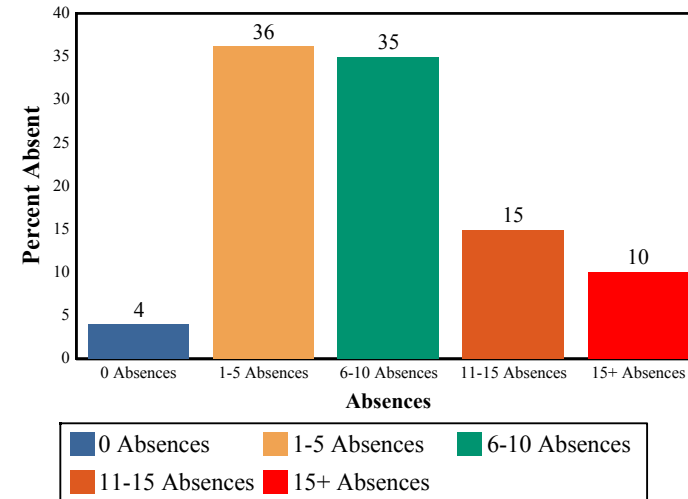


Chronic Absenteeism for 2014-15

5.17%

Absenteeism

The chart below presents the percentage of students who were absent in each category of absence: 0 absences, 1- 5 absences, 6 - 10 absences, 11 - 15 absences, and more than 15 absences. An absence is defined as being 'not present' and includes the days missed regardless of whether they were determined to be excused or unexcused by the school.



Visual and Performing Arts

The chart below contains the percentage of students who were enrolled in at least one Dance, Drama/Theater, Music or Visual Arts class in this school. The last row shows the percentage of students who were enrolled in any Visual and Performing Arts classes in the school.

Percent of Students Enrolled	School	State
Dance	N/R	1.6%
Drama/Theater	N/R	3.9%
Music	99.1%	66.0%
Visual Arts	99.1%	71.1%
Total: All Visual and Performing Arts	99.1%	89.8%

N/R - Data Not Reported

STUDENT GROWTH

CUMBERLAND
DEERFIELD TWP

GRADE SPAN PK-08

DEERFIELD TOWNSHIP SCHOOL DISTRICT
419 MORTON AVE
ROSENHAYN, NJ 08352-0375

This section of the performance report presents data about student growth, utilizing the Student Growth Percentile Methodology (SGP). SGP creates a measure of how students progressed in grades 4 through 8 in Language Arts Literacy and in grades 4 through 7 in Math when compared to other students with a similar test score history. A short video explaining the methodology can be found here: <http://www.state.nj.us/education/njsmart/performance/>

The below chart consist of five columns with measures. The first column - Schoolwide Performance - presents the schoolwide median growth score in either English Language Arts/Literacy or Mathematics for all students in the school. The second column - Peer Percentile - indicates how the school's growth performance compares to its group of peer schools. The third column - Statewide Percentile - indicates how a school compares to schools across the state. The last column - Met Target? - indicates whether the school's performance met or exceeded the statewide target, which was set to 35.

The fourth row presents the averages of the peer school percentiles, the averages of statewide percentiles, the percentage of statewide targets met.

Student Growth Indicators	Schoolwide Performance	Peer Percentile	Statewide Percentile	Statewide Target	Met Target?
Student Growth on Language Arts	45	26	37	35	YES
Student Growth on Math	52	65	63	35	YES
		46	50		100%

Student Growth

This table presents for all students with growth scores the interaction between their performance on PARCC and their growth scores. For example, in the top left cell the percentage of students who are both in Level 1 - Did not yet meet expectations AND also demonstrating low growth is displayed.

Language Arts

(Expectations)	GROWTH		
	Low	Typical	High
Did Not Yet Meet	8%	1%	0%
Partially Met	12%	9%	2%
Approached	12%	13%	11%
Met	6%	13%	11%
Exceeded	0%	1%	2%

Math

(Expectations)	GROWTH		
	Low	Typical	High
Did Not Yet Meet	4%	1%	0%
Partially Met	16%	8%	8%
Approached	4%	18%	17%
Met	4%	7%	11%
Exceeded	0%	0%	0%

Low Growth is defined as an Student Growth Percentile score less than 35.
Typical Growth is defined as an Student Growth Percentile score between 35 and 65.
High Growth is defined as a Student Growth Percentile score higher than 65.

WITHIN SCHOOL ACHIEVEMENT GAP

DEERFIELD TOWNSHIP SCHOOL DISTRICT
419 MORTON AVE
ROSENHAYN, NJ 08352-0375

CUMBERLAND
DEERFIELD TWP

GRADE SPAN PK-08

This section of the performance report presents data about the achievement gap that exists within a school - as measured by the difference between the students' scale scores at the 25th and 75th percentile in the school, the Interquartile Range (IQR). Taken together with an understanding of the overall and average achievement levels in the school, the IQR furthers an understanding of the range of student outcomes that exist in a school. A school gap smaller than the state gap indicates that the school's range of student outcomes is narrower than the state's while a school gap larger than the state gap indicates that the school's range of student outcomes is broader than the state's.

Grade Level - 03

PARCC Language Arts 25th %ile vs 75th%ile

This table presents the scale scores associated with students at the bottom (0th percentile), the 25th percentile, the 50th percentile, the 75th percentile and the top (99th percentile) of school's distribution.

Percentile	School Scale Score	State Scale Score
99th	819	850
75th	754	770
50th	729	743
25th	702	715
0th	652	650

	Scale Score Gap - School	Scale Score Gap - State
25th vs 75th Gap	52	55

Grade Level - 03

PARCC MATH 25th %ile vs 75th%ile

This table presents the scale scores associated with students at the bottom (0th percentile), the 25th percentile, the 50th percentile, the 75th percentile and the top (99th percentile) of school's distribution.

Percentile	School Scale Score	State Scale Score
99th	809	850
75th	749	767
50th	738	745
25th	730	722
0th	673	650

	Scale Score Gap - School	Scale Score Gap - State
25th vs 75th Gap	19	45

WITHIN SCHOOL ACHIEVEMENT GAP

CUMBERLAND
DEERFIELD TWP

GRADE SPAN PK-08

Grade Level - 04

PARCC Language Arts 25th %ile vs 75th%ile

This table presents the scale scores associated with students at the bottom (0th percentile), the 25th percentile, the 50th percentile, the 75th percentile and the top (99th percentile) of school's distribution.

Percentile	School Scale Score	State Scale Score
99th	788	850
75th	757	773
50th	736	750
25th	724	728
0th	683	650

	Scale Score Gap - School	Scale Score Gap - State
25th vs 75th Gap	33	45

Grade Level - 05

PARCC Language Arts 25th %ile vs 75th%ile

This table presents the scale scores associated with students at the bottom (0th percentile), the 25th percentile, the 50th percentile, the 75th percentile and the top (99th percentile) of school's distribution.

Percentile	School Scale Score	State Scale Score
99th	784	850
75th	755	773
50th	726	751
25th	717	728
0th	670	650

	Scale Score Gap - School	Scale Score Gap - State
25th vs 75th Gap	38	45

Grade Level - 04

PARCC MATH 25th %ile vs 75th%ile

This table presents the scale scores associated with students at the bottom (0th percentile), the 25th percentile, the 50th percentile, the 75th percentile and the top (99th percentile) of school's distribution.

Percentile	School Scale Score	State Scale Score
99th	766	850
75th	739	764
50th	728	742
25th	717	721
0th	692	650

	Scale Score Gap - School	Scale Score Gap - State
25th vs 75th Gap	22	43

Grade Level - 05

PARCC MATH 25th %ile vs 75th%ile

This table presents the scale scores associated with students at the bottom (0th percentile), the 25th percentile, the 50th percentile, the 75th percentile and the top (99th percentile) of school's distribution.

Percentile	School Scale Score	State Scale Score
99th	775	850
75th	745	763
50th	730	743
25th	718	723
0th	693	650

	Scale Score Gap - School	Scale Score Gap - State
25th vs 75th Gap	27	40

WITHIN SCHOOL ACHIEVEMENT GAP

CUMBERLAND
DEERFIELD TWP

GRADE SPAN PK-08

Grade Level - 06

PARCC Language Arts 25th %ile vs 75th%ile

This table presents the scale scores associated with students at the bottom (0th percentile), the 25th percentile, the 50th percentile, the 75th percentile and the top (99th percentile) of school's distribution.

Percentile	School Scale Score	State Scale Score
99th	780	850
75th	748	770
50th	740	749
25th	719	726
0th	689	650

	Scale Score Gap - School	Scale Score Gap - State
25th vs 75th Gap	29	44

Grade Level - 07

PARCC Language Arts 25th %ile vs 75th%ile

This table presents the scale scores associated with students at the bottom (0th percentile), the 25th percentile, the 50th percentile, the 75th percentile and the top (99th percentile) of school's distribution.

Percentile	School Scale Score	State Scale Score
99th	782	850
75th	749	776
50th	724	751
25th	712	724
0th	673	650

	Scale Score Gap - School	Scale Score Gap - State
25th vs 75th Gap	37	52

Grade Level - 06

PARCC MATH 25th %ile vs 75th%ile

This table presents the scale scores associated with students at the bottom (0th percentile), the 25th percentile, the 50th percentile, the 75th percentile and the top (99th percentile) of school's distribution.

Percentile	School Scale Score	State Scale Score
99th	766	850
75th	753	763
50th	734	742
25th	721	721
0th	703	650

	Scale Score Gap - School	Scale Score Gap - State
25th vs 75th Gap	32	42

Grade Level - 07

PARCC MATH 25th %ile vs 75th%ile

This table presents the scale scores associated with students at the bottom (0th percentile), the 25th percentile, the 50th percentile, the 75th percentile and the top (99th percentile) of school's distribution.

Percentile	School Scale Score	State Scale Score
99th	782	850
75th	753	759
50th	736	740
25th	723	720
0th	689	650

	Scale Score Gap - School	Scale Score Gap - State
25th vs 75th Gap	30	39

WITHIN SCHOOL ACHIEVEMENT GAP

CUMBERLAND
DEERFIELD TWP

GRADE SPAN PK-08

Grade Level - 08

PARCC Language Arts 25th %ile vs 75th%ile

This table presents the scale scores associated with students at the bottom (0th percentile), the 25th percentile, the 50th percentile, the 75th percentile and the top (99th percentile) of school's distribution.

Percentile	School Scale Score	State Scale Score
99th	810	850
75th	763	777
50th	740	751
25th	729	723
0th	691	650

	Scale Score Gap - School	Scale Score Gap - State
25th vs 75th Gap	34	54

Grade Level - 08

PARCC MATH 25th %ile vs 75th%ile

This table presents the scale scores associated with students at the bottom (0th percentile), the 25th percentile, the 50th percentile, the 75th percentile and the top (99th percentile) of school's distribution.

Percentile	School Scale Score	State Scale Score
99th	794	850
75th	754	748
50th	735	726
25th	716	704
0th	677	650

	Scale Score Gap - School	Scale Score Gap - State
25th vs 75th Gap	38	44

Length of School Day

This table presents the amount of time a school is in session for a typical student on a normal school day.

	School
2014-15	6 Hrs. 10 Mins.

Student Suspension Rate

This table presents the percentage of students who were suspended one or more times during the school year.

	School
2014-15	7.4%

Instructional Time

This table presents the amount of time that a typical student is engaged in instructional activities under the supervision of a certified teacher.

2014-15	School
Full Time	5 Hrs. 40 Mins.
Shared Time	0 Hrs. 0 Mins.

Student Expulsions

This table presents the number of students who were expelled from the school and district during the school year.

	School
2014-15	0

Student to Staff Ratio

This table presents the count of students per faculty member or administrator in the school. All staff are counted in full-time equivalents.

2014-15	School
Faculty	12
Administrators	113

SCHOOL PEER GROUP

**CUMBERLAND
DEERFIELD TWP**

**DEERFIELD TOWNSHIP SCHOOL DISTRICT
419 MORTON AVE
ROSENHAYN, NJ 08352-0375**

GRADE SPAN PK-08

This table presents the list of peer schools in alphabetical order by county name that was created specifically for this school (highlighted in yellow). Peer schools are drawn from across the state and represent schools that have similar grade configurations and that are educating students of similar demographic characteristics, as measured by enrollment in Free/Reduced Lunch Programs, Limited English Proficiency or Special Education Programs.

<u>COUNTY NAME</u>	<u>DISTRICT NAME</u>	<u>SCHOOL NAME</u>	<u>CDS CODE</u>	<u>GRADES PAN</u>	<u>ECONOMICALLY DISADVANTAGED</u>	<u>ENGLISH LANGUAGE LEARNERS</u>	<u>SPECIAL EDUCATION</u>
ATLANTIC	ABSECON CITY	EMMA C ATTALES	01-0010-050	05-08	46.3%	1.4%	10%
ATLANTIC	HAMMONTON TOWN	HAMMONTON MIDDLE SCHOOL	01-1960-060	06-08	37%	1.2%	14.2%
BERGEN	BERGENFIELD BORO	ROY W. BROWN MIDDLE SCHOOL	03-0300-075	06-08	41.5%	2.4%	14.9%
BERGEN	CLIFFSIDE PARK BORO	SCHOOL #6	03-0890-080	KG-08	57.8%	6.8%	17.2%
BERGEN	EAST RUTHERFORD BORO	ALFRED S. FAUST	03-1230-040	05-08	43.1%	2.3%	13.4%
BERGEN	LYNDHURST TWP	LINCOLN SCHOOL	03-2860-090	04-08	30.3%	3.3%	18%
BURLINGTON	EDGEWATER PARK TWP	SAMUEL M RIDGWAY MIDDLE SCHOOL	05-1280-070	05-08	39.3%	2.6%	15.2%
BURLINGTON	FLORENCE TWP	FLORENCE RIVERFRONT SCHOOL	05-1520-055	04-08	31.8%	0.7%	12.1%
CAMDEN	OAKLYN BORO	OAKLYN PUBLIC SCHOOL	07-3770-050	KG-09	38%	2.1%	16.2%
CHARTERS	BENJAMIN BANNEKER PREP CS	BENJAMIN BANNEKER PREPARATORY CHARTER SCHOOL	80-6076-961	06-08	41.5%	0%	4.8%
CHARTERS	DR LENA EDWARDS ACADEMIC CS	DR LENA EDWARDS ACADEMIC CHARTER SCHOOL	80-6064-946	KG-08	40.6%	0%	3.8%
CHARTERS	LEARNING COMMUNITY CS	LEARNING COMMUNITY CHARTER SCHOOL	80-7115-960	PK-08	32%	0%	9.7%
CUMBERLAND	DEERFIELD TWP	DEERFIELD TOWNSHIP SCHOOL DISTRICT	11-1020-040	PK-08	49.4%	4.7%	14.6%
CUMBERLAND	HOPEWELL TWP	HOPEWELL CREST	11-2270-060	KG-08	34.9%	1.8%	11.7%
CUMBERLAND	STOW CREEK TWP	STOW CREEK TOWNSHIP	11-5070-050	KG-08	40.5%	0%	9%
ESSEX	NEWARK CITY	IVY HILL ELEMENTARY SCHOOL	13-3570-565	PK-08	68.8%	10.3%	18.7%
HUDSON	BAYONNE CITY	NICHOLAS ORESKO #14	17-0220-140	PK-08	44.6%	0%	3.3%
HUDSON	NORTH BERGEN TWP	LINCOLN ELEMENTARY SCHOOL	17-3610-090	PK-08	66.9%	7.8%	12.1%
MIDDLESEX	DUNELLEN BORO	LINCOLN MIDDLE SCHOOL	23-1140-060	06-08	40.9%	2%	10.9%
MIDDLESEX	EDISON TWP	HERBERT HOOVER MIDDLE SCHOOL	23-1290-057	06-08	31.5%	0.2%	14.7%
MIDDLESEX	EDISON TWP	THOMAS JEFFERSON MIDDLE SCHOOL	23-1290-060	06-08	39.7%	3.4%	15.3%
MIDDLESEX	HIGHLAND PARK BORO	HIGHLAND PARK MIDDLE SCHOOL	23-2150-060	06-08	39.8%	3.2%	16.2%



State of New Jersey
2014-15

11-1020-040

SCHOOL PEER GROUP

DEERFIELD TOWNSHIP SCHOOL DISTRICT
419 MORTON AVE
ROSENHAYN, NJ 08352-0375

CUMBERLAND
DEERFIELD TWP

GRADE SPAN PK-08

MIDDLESEX	JAMESBURG BORO	GRACE M. BRECKWEDEL MIDDLE SCHOOL	23-2370-075	06-08	48%	1.7%	11%	
MIDDLESEX	OLD BRIDGE TWP	CARL SANDBURG MIDDLE SCHOOL	23-3845-103	06-08	31.7%	2.4%	14.1%	
MIDDLESEX	PISCATAWAY TWP	THEODORE SCHOR MIDDLE SCHOOL	23-4130-057	06-08	39.5%	1.8%	10.9%	
MIDDLESEX	SOUTH PLAINFIELD BORO	SOUTH PLAINFIELD MIDDLE SCHOOL	23-4910-053	07-08	30.6%	1%	15.3%	
MONMOUTH	MATAWAN-ABERDEEN REGIONAL	MATAWAN-ABERDEEN MIDDLE SCHOOL	25-3040-053	06-08	30.3%	1%	13%	
MORRIS	NETCONG BORO	NETCONG ELEMENTARY SCHOOL	27-3520-060	PK-08	37.5%	4.4%	18.2%	
SOMERSET	FRANKLIN TWP	FRANKLIN MIDDLE SCHOOL	35-1610-160	07-08	49.1%	4.6%	15.7%	
SOMERSET	SOMERVILLE BORO	SOMERVILLE MIDDLE SCHOOL	35-4820-055	06-08	44.4%	3.2%	15.8%	
SOMERSET	SOUTH BOUND BROOK	ROBERT MORRIS SCHOOL	35-4850-060	PK-08	46.9%	3.7%	10.9%	