

[About Us](#) (/about-us)

[Careers](#) (/careers)

[Volunteer](#) (/volunteer)

[Foundation](#) (/about/foundation/)

[Donate](https://interland3.donorperfect.net/weblink/weblink.aspx?name=E353359&id=14) (<https://interland3.donorperfect.net/weblink/weblink.aspx?name=E353359&id=14>)

[Patient Portal](https://communicator.syntellis.com) (<https://communicator.syntellis.com>)

Search Site

Search

201-322-3350 (tel:2013223350)



Ranked #1 in New Jersey

Bergen New Bridge Medical Center has been recognized for its community benefit, receiving an “A” Grade on the Lown Institute Hospitals Index for Social Responsibility.

[Learn More](/news-and-events/news/2023/bergen-new-bridge-medical-center-ranked-1-in-new-jersey--2-in-th/) (/news-and-events/news/2023/bergen-new-bridge-medical-center-ranked-1-in-new-jersey--2-in-th/)



CareRite Now Opens!

Our new centers will be in select Inserra Supermarkets throughout Bergen County.

[Learn More \(/health-services/carerite-now/\)](/health-services/carerite-now/)



The Foundation Golf Outing

REGISTRATION NOW OPEN! Monday, August 7, 2023. Bergen New Bridge Medical Center Foundation's Annual Golf Outing takes place at one of the best courses in the country; Hackensack Golf Club.

[Learn More \(/about/foundation/\)](/about/foundation/)



We Made the Grade, Again

Second year in a row the Medical Center has received an A rating

[Learn More \(/news-and-events/news/2022/bergen-new-bridge-medical-center-nationally-recognized-with-a-sa/\)](/news-and-events/news/2022/bergen-new-bridge-medical-center-nationally-recognized-with-a-sa/)



The Center for Eating Disorders & Body Positivity

NOW OPEN!

Helping patients obtain a positive body image and understand how food and nutrition affect them.

[Learn More \(/health-services/eating-disorders-and-body-positivity//\)](/health-services/eating-disorders-and-body-positivity//)



Diagnostic & Interventional Radiology

We offer a complete range of radiology diagnostics for all your healthcare needs. Our services are centralized at our Paramus campus to better serve our patients and residents at our three locations.

[View Radiology Services \(/health-services/imaging-radiology/\)](/health-services/imaging-radiology/)



Primary and Specialty Care

Our outpatient services offer the convenience to see your doctor(s), complete lab work and have prescriptions filled at the same location.

[Learn More \(/health-services/ambulatory-specialty-care/\)](/health-services/ambulatory-specialty-care/)



Quality of Care and Quality of Life

Our highly-trained, skilled staff provides nursing care, access to specialized physicians on site, and focuses on the individual needs of each of our residents.

[Learn More \(/health-services/long-term-care/\)](/health-services/long-term-care/)



[\(/health-services/acute-medical-care/emergency-care/\)](/health-services/acute-medical-care/emergency-care/)

Emergency Medical Care

Separate behavioral health suites, with privacy to acute medical patients as well as those in need of mental health emergency services

[Learn More \(/health-services/acute-medical-care/emergency-care/\)](/health-services/acute-medical-care/emergency-care/)



[\(/health-services/behavioral-health/\)](#)

Behavioral Health Care

Bergen New Bridge is a premier source for behavioral healthcare excellence, our diversified treatment programs offer individualized care in a warm, supportive atmosphere.

[How We Can Help \(/health-services/behavioral-health/\)](#)



Care Where and When You Need It

Our Paterson outpatient satellite location, in the former Barnert complex in Paterson, is a completely renovated and refurbished site. Barnert is home to doctors who provide specialty services to our patients in the greater Paterson area.

Bergen New Bridge at Bergenfield provides easy, nearby access to primary and specialized healthcare services to residents in the area.

Our CareRite Now centers in select Inserra Supermarkets provide convenient health and wellness care in your community. We welcome walk-ins and appointments with our compassionate and experienced healthcare physicians providing wellness and illness visits, physicals, vaccinations, point-of-care testing, EKGs, lab testing, and more. Our CareRite Now locations feel more like private practice than typical urgent care.

- [Barnert \(/find-a-location/locations-profile/?id=15\)](#)
- [Bergenfield \(/find-a-location/locations-profile/?id=14\)](#)
- [CareRite Now \(/health-services/carerite-now/\)](#)

Hope & Resiliency Center for Youth

The Center offers a broad range of treatment services to meet the needs of adolescents and their families. This treatment setting allows adolescents to continue to attend their schools during the day and return to their homes in the evening while still receiving a high level of treatment, structure, and support.

- Emotional and social adjustment
- Family functioning
- School performance



Bergen New Bridge

Bergen New Bridge Medical Center (BNBMC), a clinical affiliate of Rutgers, is a 1,070-bed hospital located at 230 East Ridgewood Avenue in Paramus, NJ. The Medical Center is both the largest hospital and licensed nursing home in NJ and the fourth largest, publicly owned hospital in the nation.

Bergen New Bridge, a not-for-profit safety net facility, provides high-quality comprehensive services, including acute and ambulatory care, mental health and substance use disorder treatment, long-term care, 24/7 emergency department, surgical suites, physical rehabilitation, pharmacy, laboratory, radiologic services (including digital mammography). It is a leading provider of COVID 19 testing, vaccinations, and therapeutics. The Medical Center also has satellite offices in Bergenfield, Englewood and Paterson. Primary care and other health and wellness services are available at the hospital's CareRite Now centers located in select Inserra Supermarkets in Bergen County.

Bergen New Bridge is in network with all major New Jersey commercial insurance plans covering 99.91% of NJ residents and is a Veterans Community Care Provider. It is also a Leader in LGBTQ Healthcare Equality in the Human Rights Campaign (HRC) Healthcare Equality Index (HEI).

Vaccination and Testing Leader



[\(/health-services/covid-19/\)](/health-services/covid-19/)

[We quickly initiated multiple simultaneous vaccination programs while continuing an essential COVID-19 testing program. \(/health-services/covid-19/\)](#)

Serving the Needs of Veterans



[\(/health-services/veterans-services/\)](/health-services/veterans-services/)

[We are a Veterans Community Care Provider proudly serving the healthcare needs of veterans. \(/health-services/veterans-services/\)](#)



Exceptional care close to home

- [Behavioral & mental health services \(/health-services/behavioral-health/\)](/health-services/behavioral-health/)
- [Emergency care \(/health-services/acute-medical-care/emergency-care/\)](/health-services/acute-medical-care/emergency-care/)
- [Long-term care \(/health-services/long-term-care/\)](/health-services/long-term-care/)
- [Primary and specialty care \(/health-services/ambulatory-specialty-care/\)](/health-services/ambulatory-specialty-care/)
- [Substance use disorder treatment \(/health-services/substance-use-disorder-treatment/\)](/health-services/substance-use-disorder-treatment/)

[Explore more services \(/health-services/\)](/health-services/)

Bariatric Services

At Bergen New Bridge Medical Center, our compassionate and experienced bariatric team can help you realize your weight loss goal and help improve your health and overall well-being.

[Learn More \(/health-services/acute-medical-care/surgery/bariatric-surgery/\)](/health-services/acute-medical-care/surgery/bariatric-surgery/)



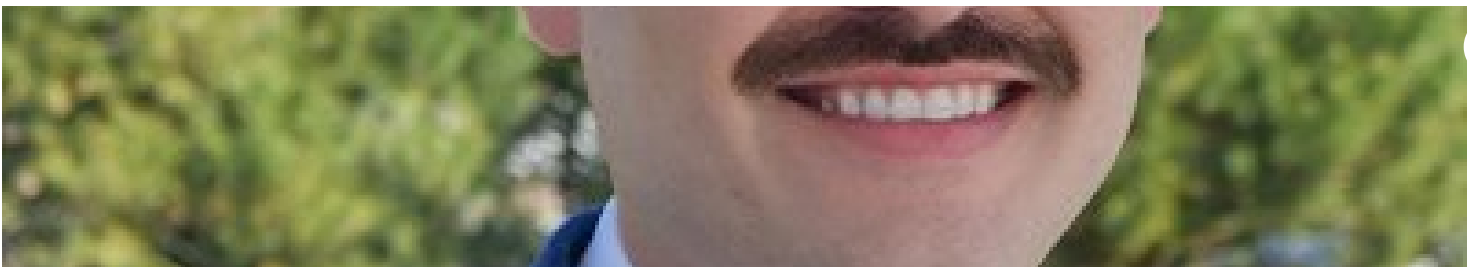
Recent News



Bergen New Bridge Medical Center Selected for CIANJ/COMMERCE Magazine Environmental Leadership Award

The Medical Center is being recognized for reducing its carbon footprint

April 24, 2023



Bergen New Bridge Medical Center Welcomes New Medical Director for LGBTQIA+ Health and Wellness Center

Dr. Christopher Awwad specializes in comprehensive care for the LGBTQIA+ community

April 14, 2023



Bergen New Bridge Medical Center Helps Patients Re-Apply to Keep Healthcare Coverage

Bergen New Bridge Medical Center is working with patients to help them keep their healthcare coverage as the Public Health Emergency (PHE) ends.

March 31, 2023



Bergen New Bridge Medical Center Hosts American Red Cross Flag Raising

Bergen New Bridge Medical Center Hosts American Red Cross Flag Raising Ceremony honoring the important work done by volunteers and employees of the Red Cross

March 20, 2023



Bergen New Bridge Medical Center Ranked #1 in New Jersey & #2 in the U.S. for Social Responsibility

Low Institute Hospitals Index for Social Responsibility recognized the hospital for its community benefit

March 1, 2023

[View More](#)

Upcoming Classes & Events

MAY

11

Community Health & Wellness Event - Wallington

10:00 AM - 11:15 AM

Bergen New Bridge's Community Health and Wellness Events

AUG

7

The Foundation's Golf Outing

8:00 AM - 8:00 PM

Bergen New Bridge Medical Center Foundation's Golf Outing



[Psychiatry Residency Training](/about/psychiatry-residency/)

Our program gives the psychiatric residents clinical experience in adult, geriatric, addiction, and child psychiatry and provides sound theoretical and clinical training and establishes a foundation for future specialization.



[Laboratory Services](/health-services/laboratory-services/)

[Laboratory Services](/health-services/laboratory-services/)

The Laboratory team is here to put you at ease while providing quality testing services. From simple blood tests to expert biopsy interpretation, the Laboratory serves a vital role in diagnosing, treating, and monitoring disease.



[On-Site Pharmacy](/health-services/pharmacy-services/)

The Bergen New Bridge Medical Center Outpatient Pharmacy provides prescription services to Bergen New Bridge patients and employees. Prescription pick-up is available from 7am – 4:30pm. To make pick-up easy and safe for everyone, we now offer curbside delivery.

Bergen New Bridge Medical Center

230 East Ridgewood Ave.

Paramus, NJ 07652

[201-322-3350 \(tel:2013223350\)](tel:2013223350)

© 2023 Bergen New Bridge Medical Center. All rights reserved.