



State of New Jersey

OVERVIEW

SUSSEX
OGDENSBURG BORO

GRADE SPAN PK-08

37-3840-050
OGDENSBURG
100 MAIN STREET
OGDENSBURG, NJ 07439

This school's academic performance **is about average when compared** to schools across the state. Additionally, its academic performance **lags in comparison** to its peers. This school's college and career readiness **lags in comparison** to schools across the state. Additionally, its college and career readiness **lags in comparison** to its peers. This school's student growth performance **significantly lags in comparison** to schools across the state. Additionally, its student growth performance **significantly lags in comparison** to its peers.

Performance Areas	Peer Rank (Percentile)	Statewide Rank (Percentile)	Percent of Targets Met
Academic Achievement	30	52	100%
College and Career Readiness	32	25	0%
Student Growth	17	18	100%

Improvement Status

N/A

Rationale

N/A

Very High Performance is defined as being **equal to or above the 80.0th percentile**.

High Performance is defined as being **between the 60.0th and 79.9th percentiles**.

Average Performance is defined as being **between the 40.0th and 59.9th percentiles**.

Lagging Performance is defined as being **between the 20.0th and 39.9th percentiles**.

Significantly Lagging Performance is defined as being **equal to or below the 19.9th percentile**.

Peer Schools are schools that have similar grade levels and students with similar demographic characteristics, such as the percentage of students qualifying for Free/Reduced Lunch, Limited English Proficiency programs or Special Education programs.

Academic Achievement

This school outperforms **52%** of schools statewide as noted by its statewide percentile ranking and **30%** of schools educating students with similar demographic characteristics as noted in its peer school percentile ranking in the performance area of Academic Achievement. Additionally, this school is meeting **100%** of its performance targets in the area of Academic Achievement.



Academic Achievement measures the content knowledge students have in language arts literacy and math. For elementary and middle schools, this includes measures of the school's proficiency rate on both the Language Arts Literacy and Math sections of the New Jersey Assessment of Skills and Knowledge (NJ ASK). A proficiency rate is calculated by summing the count of students who scored either proficient or advanced proficient on the assessment and dividing by the count of valid test scores.

College and Career Readiness

This school outperforms **25%** of schools statewide as noted by its statewide percentile ranking and **32%** of schools educating students with similar demographic characteristics as noted in its peer school percentile ranking in the performance area of College and Career Readiness. Additionally, this school is meeting **0%** of its performance targets in the area of College and Career Readiness.



College and Career readiness measures the degree to which students are demonstrating behaviors that are indicative of future attendance and/or success in college and careers. For all elementary and middle schools, this includes a measurement of how many students are chronically absent. For schools with middle school grades, it also includes a measurement of how many students take Algebra I in either seventh or eighth grade.

Student Growth

This school outperforms **18%** of schools statewide as noted by its statewide percentile ranking and **17%** of schools educating students with similar demographic characteristics as noted in its peer school percentile ranking in the performance area of Student Growth. Additionally, this school is meeting **100%** percentage of its performance targets in the area of Student Growth.



Student Growth measures the performance of students from one year to the next on the New Jersey Assessment of Skills and Knowledge (NJ ASK) in Language Arts Literacy and Math when compared to students with a similar history of performance on NJ-ASK.



State of New Jersey

DEMOGRAPHIC INFORMATION

SUSSEX

OGDENSBURG BORO

GRADE SPAN PK-08

37-3840-050

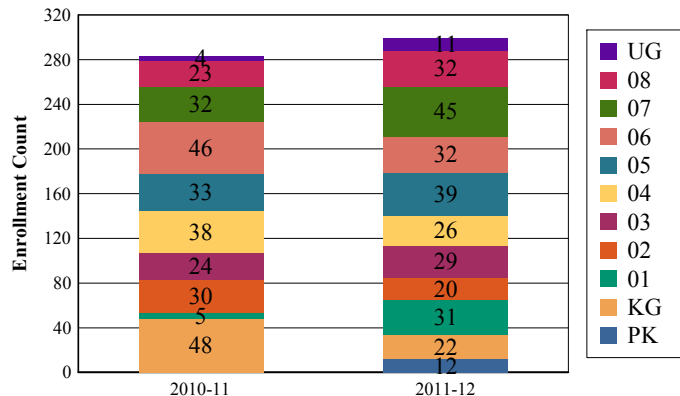
OGDENSBURG

100 MAIN STREET

OGDENSBURG, NJ 07439

Enrollment by Grade

This graph presents the count of students who were 'on roll' by grade in October of each school year.



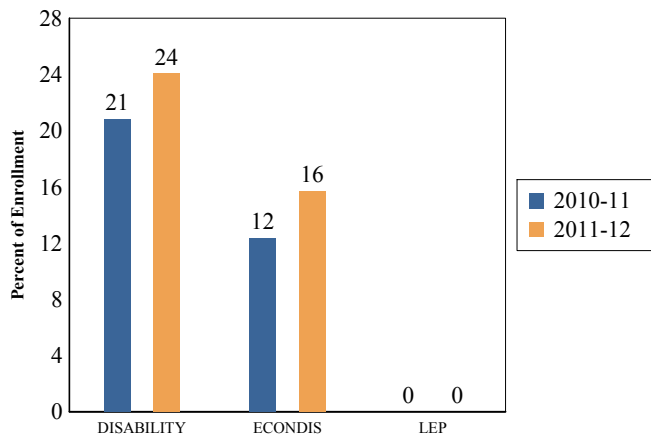
Total School Enrollment Trends

Note: "UG" represents the count of students who are 'on roll' in this school but who are educated in ungraded classrooms, meaning that the classrooms may contain students from multiple grade levels.

Total School Enrollment

2010-11	283
2011-12	299

Enrollment Trends by Program Participation



Current Year Enrollment by Program Participation

2011-2012	Count of Students	% of Enrollment
Students with Disability	72	24%
Economically Disadvantaged Students	47	15.7%
Limited English Proficient Students	0	0.0%

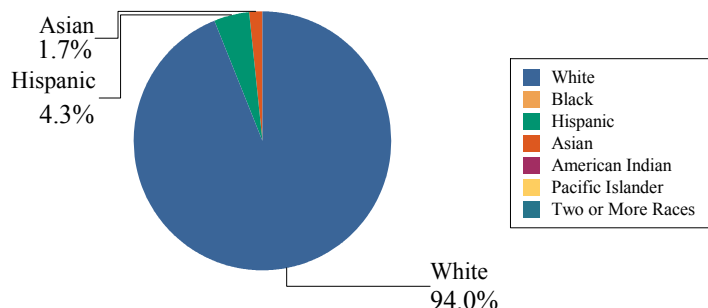
Language Diversity

This table presents the percentage of students who primarily speak each language in their home.

2011-12	Percent
English	99.3%
Spanish	0.7%

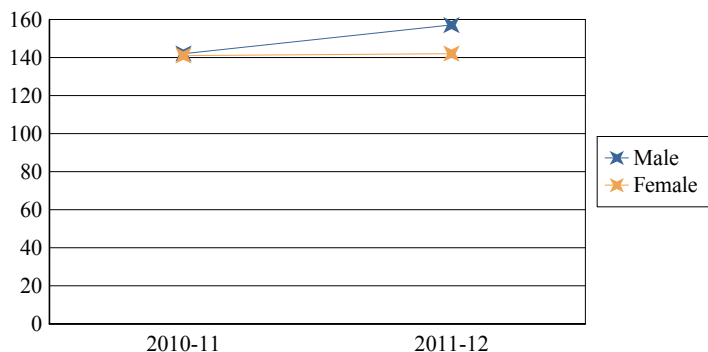
Enrollment by Ethnic/Racial Subgroup

This graph presents the percentages of enrollment for each subgroup defined by the No Child Left Behind Act of 2001



Enrollment by Gender

This graph presents the count of students by gender who were 'on roll' in October of each school year.



	Male	Female
2010-11	142	141
2011-12	157	142



State of New Jersey

ACADEMIC ACHIEVEMENT

SUSSEX

OGDENSBURG BORO

GRADE SPAN PK-08

37-3840-050

OGDENSBURG

100 MAIN STREET

OGDENSBURG, NJ 07439

Academic Achievement measures the content knowledge students have in language arts literacy and math. In elementary and middle school, this includes the outcomes of the New Jersey Assessment of Skills and Knowledge (NJASK). The first column - Schoolwide Performance - in the table below includes measures of the total schoolwide proficiency rate in both language arts literacy and math across multiple administrations of the assessment. The second column - Peer School Percentile Rank - indicates where the school's proficiency rate compares to its group of peer schools. For example, a school that has a peer school percentile rank of 65 has a proficiency rate that is higher than 65% of its peer schools. The third column - Statewide Percentile Rank - indicates where the school's proficiency rate compares to schools across the state. For example, a school that has a statewide percentile rank of 30 has a proficiency rate that is higher than 30% of all schools with HSPA scores statewide. The last column - Percent of Targets Met - presents the percentage of progress targets met as defined by the NJDOE's NCLB waiver.

The Summary row presents the averages of the peer school percentile ranks, the average of statewide percentile ranks and the percentage of statewide targets met.

Academic Achievement Indicators	Schoolwide Performance	Peer Rank (Percentile)	State Rank (Percentile)	Percent of Targets Met
NJASK Language Arts Proficiency and above	65%	4	42	100%
NJASK Math Proficiency and above	79%	56	61	100%
SUMMARY - Academic Achievement		30	52	100%

NCLB Progress Targets - Language Arts Literacy

This table presents the Progress Targets as uniquely calculated for each subgroup in each school under NJDOE's NCLB waiver. The methodology - as defined by the United States Department of Education - is calculated so that each subgroup will halve the gap between their 2011 proficiency rate and 100% proficiency by 2017.

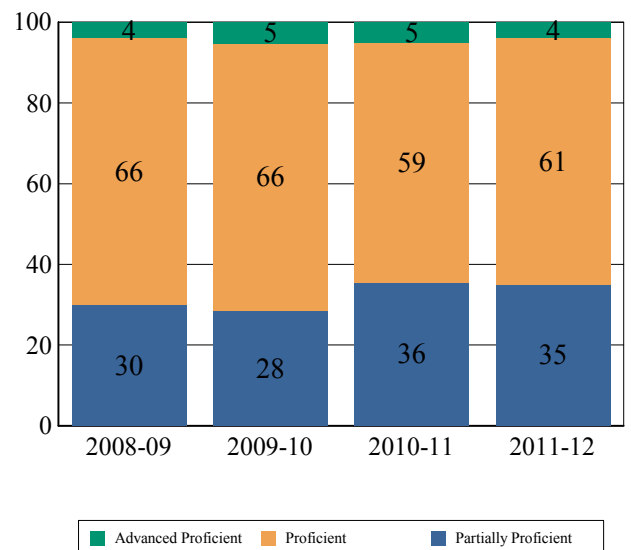
Subgroups	Total Valid Scores	Pass Rate	Target	Met Target?
Schoolwide	200	65	67.5	YES*
White	190	66.3	67.3	YES*
Black	-	-		--
Hispanic	-	-		--
American Indian	-	-		--
Asian	-	-		--
Two or More Races	-	-		--
Students with Disability	44	25	24.7	YES
Limited English Proficient Students	-	-		--
Economically Disadvantaged Students	-	-		--

YES* = Met Progress Target(Confidence Interval Applied)

Data is presented for subgroups when the count is high enough under NCLB suppression rules.

Proficiency Trends - Language Arts Literacy

This graph presents the percentage of students who scored in the Advanced Proficient, Proficient and Partially Proficient categories of the statewide Language Arts Literacy assessment over the prior four years.





State of New Jersey

ACADEMIC ACHIEVEMENT

SUSSEX

OGDENSBURG BORO

GRADE SPAN PK-08

37-3840-050

OGDENSBURG

100 MAIN STREET

OGDENSBURG, NJ 07439

NCLB Progress Targets - Math

This table presents the Progress Targets as uniquely calculated for each subgroup in each school under NJDOE's NCLB waiver. The methodology - as defined by the United States Department of Education - is calculated so that each subgroup will halve the gap between their 2011 proficiency rate and 100% proficiency by 2017.

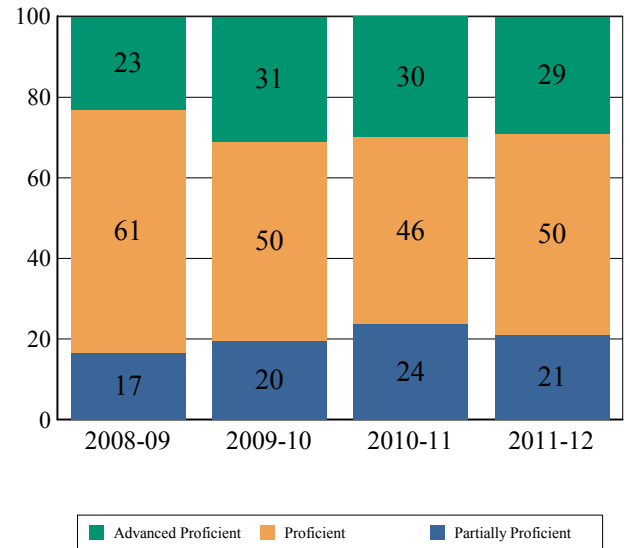
Subgroups	Total Valid Scores	Pass Rate	Target	Met Target?
Schoolwide	200	79	78.3	YES
White	190	80.5	79	YES
Black	-	-		--
Hispanic	-	-		--
American Indian	-	-		--
Asian	-	-		--
Two or More Races	-	-		--
Students with Disability	44	43.2	36.9	YES
Limited English Proficient Students	-	-		--
Economically Disadvantaged Students	-	-		--

YES* = Met Progress Target(Confidence Interval Applied)

Data is presented for subgroups when the count is high enough under NCLB suppression rules.

Proficiency Trends - Math

This graph presents the percentage of students who scored in the Advanced Proficient, Proficient and Partially Proficient categories of the statewide Math assessment over the prior four years.





State of New Jersey

ACADEMIC ACHIEVEMENT

SUSSEX

OGDENSBURG BORO

GRADE SPAN PK-08

37-3840-050

OGDENSBURG

100 MAIN STREET

OGDENSBURG, NJ 07439

NJASK Results - Language Arts Literacy Grade Level - 03

This table presents the grade level proficiency results, as measured by NJASK, in Advanced Proficient, Proficient, and Partially Proficient categories for all appropriate subgroups.

Subgroups	Advanced Proficient	Proficient	Partially Proficient
Schoolwide	3%	68%	29%
White	3%	68%	29%
Black	N/A	N/A	N/A
Hispanic	N/A	N/A	N/A
American Indian	N/A	N/A	N/A
Asian	N/A	N/A	N/A
Two or More Races	N/A	N/A	N/A
Students w/ Disability	-	-	-
Limited English Proficient Students	N/A	N/A	N/A
Economically Disadvantaged Students	-	-	-

Data is presented for subgroups when the count is high enough under NCLB suppression rules.

NJASK Results - Language Arts Literacy Grade Level - 04

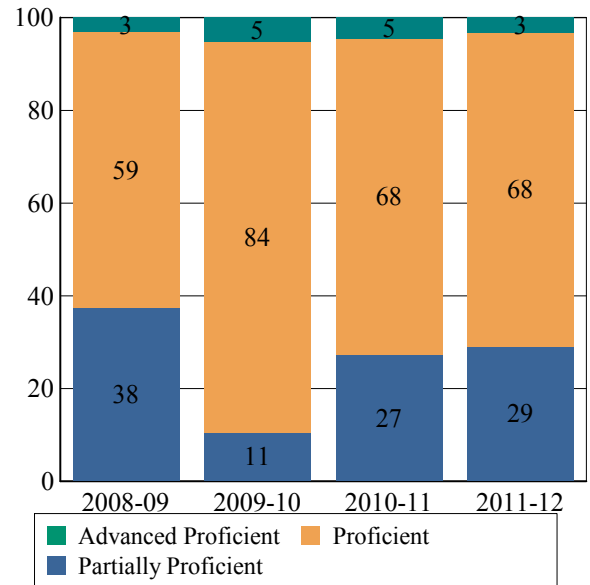
This table presents the grade level proficiency results, as measured by NJASK, in Advanced Proficient, Proficient, and Partially Proficient categories for all appropriate subgroups.

Subgroups	Advanced Proficient	Proficient	Partially Proficient
Schoolwide	0%	50%	50%
White	0%	48%	52%
Black	N/A	N/A	N/A
Hispanic	N/A	N/A	N/A
American Indian	N/A	N/A	N/A
Asian	-	-	-
Two or More Races	N/A	N/A	N/A
Students w/ Disability	-	-	-
Limited English Proficient Students	N/A	N/A	N/A
Economically Disadvantaged Students	-	-	-

Data is presented for subgroups when the count is high enough under NCLB suppression rules.

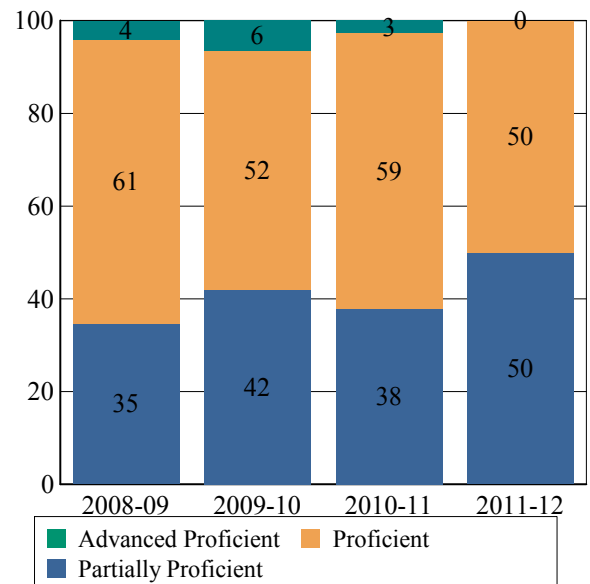
NJASK Proficiency Trends - Language Arts Literacy - Grade Level - 03

This graph presents the grade level outcomes in the categories of Advanced Proficient, Proficient, and Partially Proficient over the last four years.



NJASK Proficiency Trends - Language Arts Literacy - Grade Level - 04

This graph presents the grade level outcomes in the categories of Advanced Proficient, Proficient, and Partially Proficient over the last four years.





State of New Jersey

ACADEMIC ACHIEVEMENT

SUSSEX

OGDENSBURG BORO

GRADE SPAN PK-08

37-3840-050

OGDENSBURG

100 MAIN STREET

OGDENSBURG, NJ 07439

NJASK Results - Language Arts Literacy Grade Level - 05

This table presents the grade level proficiency results, as measured by NJASK, in Advanced Proficient, Proficient, and Partially Proficient categories for all appropriate subgroups.

Subgroups	Advanced Proficient	Proficient	Partially Proficient
Schoolwide	3%	61%	36%
White	3%	67%	30%
Black	N/A	N/A	N/A
Hispanic	-	-	-
American Indian	N/A	N/A	N/A
Asian	-	-	-
Two or More Races	N/A	N/A	N/A
Students w/ Disability	-	-	-
Limited English Proficient Students	N/A	N/A	N/A
Economically Disadvantaged Students	-	-	-

Data is presented for subgroups when the count is high enough under NCLB suppression rules.

NJASK Results - Language Arts Literacy Grade Level - 06

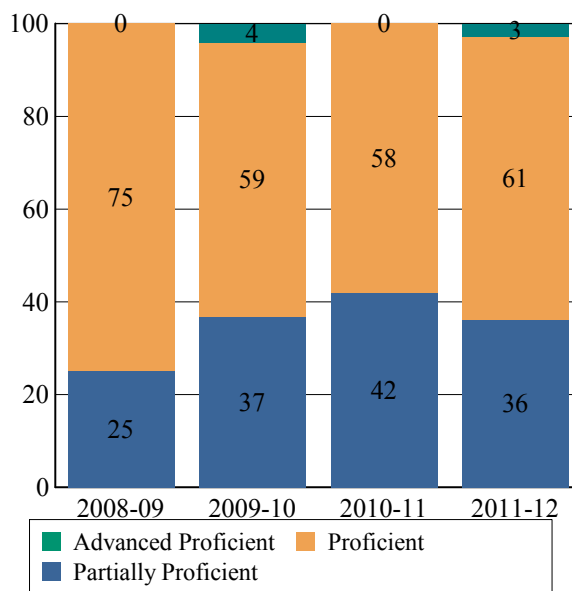
This table presents the grade level proficiency results, as measured by NJASK, in Advanced Proficient, Proficient, and Partially Proficient categories for all appropriate subgroups.

Subgroups	Advanced Proficient	Proficient	Partially Proficient
Schoolwide	3%	58%	39%
White	3%	59%	38%
Black	N/A	N/A	N/A
Hispanic	-	-	-
American Indian	N/A	N/A	N/A
Asian	-	-	-
Two or More Races	N/A	N/A	N/A
Students w/ Disability	-	-	-
Limited English Proficient Students	N/A	N/A	N/A
Economically Disadvantaged Students	-	-	-

Data is presented for subgroups when the count is high enough under NCLB suppression rules.

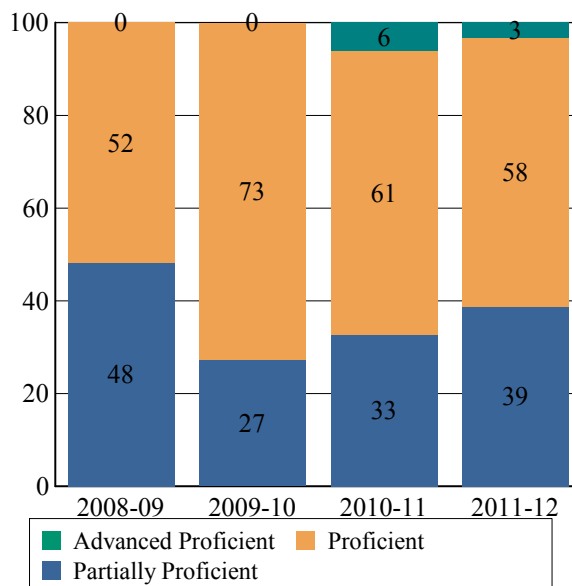
NJASK Proficiency Trends - Language Arts Literacy - Grade Level - 05

This graph presents the grade level outcomes in the categories of Advanced Proficient, Proficient, and Partially Proficient over the last four years.



NJASK Proficiency Trends - Language Arts Literacy - Grade Level - 06

This graph presents the grade level outcomes in the categories of Advanced Proficient, Proficient, and Partially Proficient over the last four years.





State of New Jersey

ACADEMIC ACHIEVEMENT

SUSSEX

OGDENSBURG BORO

GRADE SPAN PK-08

37-3840-050

OGDENSBURG

100 MAIN STREET

OGDENSBURG, NJ 07439

NJASK Results - Language Arts Literacy Grade Level - 07

This table presents the grade level proficiency results, as measured by NJASK, in Advanced Proficient, Proficient, and Partially Proficient categories for all appropriate subgroups.

Subgroups	Advanced Proficient	Proficient	Partially Proficient
Schoolwide	4%	59%	37%
White	5%	59%	36%
Black	N/A	N/A	N/A
Hispanic	-	-	-
American Indian	N/A	N/A	N/A
Asian	N/A	N/A	N/A
Two or More Races	N/A	N/A	N/A
Students w/ Disability	-	-	-
Limited English Proficient Students	N/A	N/A	N/A
Economically Disadvantaged Students	-	-	-

Data is presented for subgroups when the count is high enough under NCLB suppression rules.

NJASK Results - Language Arts Literacy Grade Level - 08

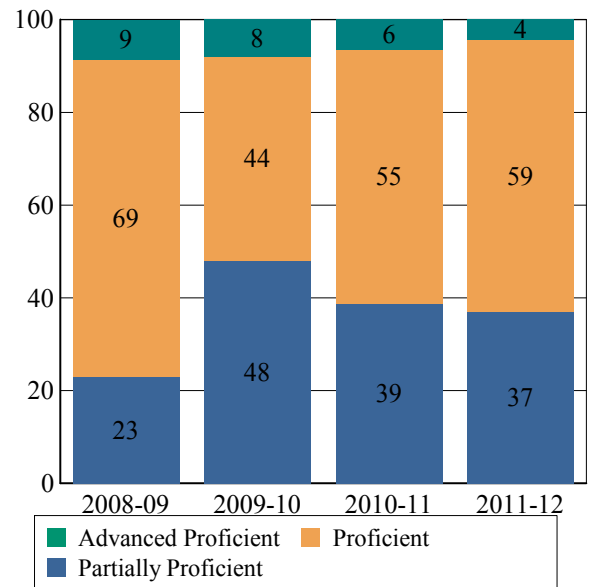
This table presents the grade level proficiency results, as measured by NJASK, in Advanced Proficient, Proficient, and Partially Proficient categories for all appropriate subgroups.

Subgroups	Advanced Proficient	Proficient	Partially Proficient
Schoolwide	9%	69%	22%
White	10%	70%	20%
Black	N/A	N/A	N/A
Hispanic	-	-	-
American Indian	N/A	N/A	N/A
Asian	N/A	N/A	N/A
Two or More Races	N/A	N/A	N/A
Students w/ Disability	-	-	-
Limited English Proficient Students	N/A	N/A	N/A
Economically Disadvantaged Students	-	-	-

Data is presented for subgroups when the count is high enough under NCLB suppression rules.

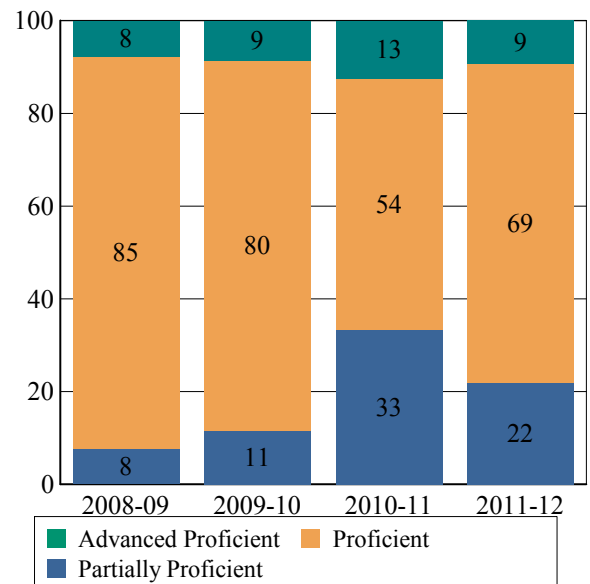
NJASK Proficiency Trends - Language Arts Literacy - Grade Level - 07

This graph presents the grade level outcomes in the categories of Advanced Proficient, Proficient, and Partially Proficient over the last four years.



NJASK Proficiency Trends - Language Arts Literacy - Grade Level - 08

This graph presents the grade level outcomes in the categories of Advanced Proficient, Proficient, and Partially Proficient over the last four years.





State of New Jersey

ACADEMIC ACHIEVEMENT

SUSSEX

OGDENSBURG BORO

GRADE SPAN PK-08

37-3840-050

OGDENSBURG

100 MAIN STREET

OGDENSBURG, NJ 07439

2011 National Assessment Educational Progress (NAEP)

The National Assessment of Educational Progress (NAEP) is the largest national assessment of what our nation's students know and can do. NAEP assesses fourth-, eighth-, and twelfth-grade students in subjects such as reading, mathematics, science, and writing. The reporting of NAEP scores on state report cards is a federal mandate. The results of NAEP are also published as the Nation's Report Card, and are available for the nation, states, and, in some cases, urban districts. The NAEP scores on the report card include grades four and eight 2011 reading and math scores for New Jersey which are the last scores published. For subgroup outcomes, visit :

<http://www.nj.gov/education/pr/2013/naep/naep4read.html>

For more information, visit <http://nces.ed.gov/nationsreportcard/>

Proficiency Percentages

Grade 4 Reading	State/Nation	Below Basic	Basic	Proficient	Advanced
All Students	State (NJ)	21.9	34.2	32.5	11.4
All Students	Nation	33.8	33.8	24.9	7.5

2011 National Assessment Educational Progress (NAEP)

The National Assessment of Educational Progress (NAEP) is the largest national assessment of what our nation's students know and can do. NAEP assesses fourth-, eighth-, and twelfth-grade students in subjects such as reading, mathematics, science, and writing. The reporting of NAEP scores on state report cards is a federal mandate. The results of NAEP are also published as the Nation's Report Card, and are available for the nation, states, and, in some cases, urban districts. The NAEP scores on the report card include grades four and eight 2011 reading and math scores for New Jersey which are the last scores published. For subgroup outcomes, visit :

<http://www.nj.gov/education/pr/2013/naep/naep8read.html>

For more information, visit <http://nces.ed.gov/nationsreportcard/>

Proficiency Percentages

Grade 8 Reading	State/Nation	Below Basic	Basic	Proficient	Advanced
All Students	State (NJ)	15.8	39.5	38.6	6.2
All Students	Nation	25.3	43.0	28.6	3.0



State of New Jersey

ACADEMIC ACHIEVEMENT

SUSSEX

OGDENSBURG BORO

GRADE SPAN PK-08

37-3840-050

OGDENSBURG

100 MAIN STREET

OGDENSBURG, NJ 07439

NJASK Results - Math Grade Level - 03

This table presents the grade level proficiency results, as measured by NJASK, in Advanced Proficient, Proficient, and Partially Proficient categories for all appropriate subgroups.

Subgroups	Advanced Proficient	Proficient	Partially Proficient
Schoolwide	39%	55%	6%
White	39%	55%	6%
Black	N/A	N/A	N/A
Hispanic	N/A	N/A	N/A
American Indian	N/A	N/A	N/A
Asian	N/A	N/A	N/A
Two or More Races	N/A	N/A	N/A
Students w/ Disability	-	-	-
Limited English Proficient Students	N/A	N/A	N/A
Economically Disadvantaged Students	-	-	-

Data is presented for subgroups when the count is high enough under NCLB suppression rules.

NJASK Results - Math Grade Level - 04

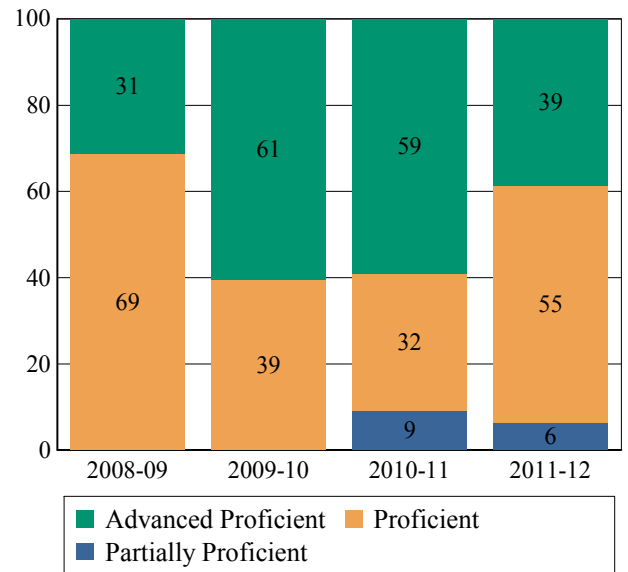
This table presents the grade level proficiency results, as measured by NJASK, in Advanced Proficient, Proficient, and Partially Proficient categories for all appropriate subgroups.

Subgroups	Advanced Proficient	Proficient	Partially Proficient
Schoolwide	21%	67%	13%
White	22%	65%	13%
Black	N/A	N/A	N/A
Hispanic	N/A	N/A	N/A
American Indian	N/A	N/A	N/A
Asian	-	-	-
Two or More Races	N/A	N/A	N/A
Students w/ Disability	-	-	-
Limited English Proficient Students	N/A	N/A	N/A
Economically Disadvantaged Students	-	-	-

Data is presented for subgroups when the count is high enough under NCLB suppression rules.

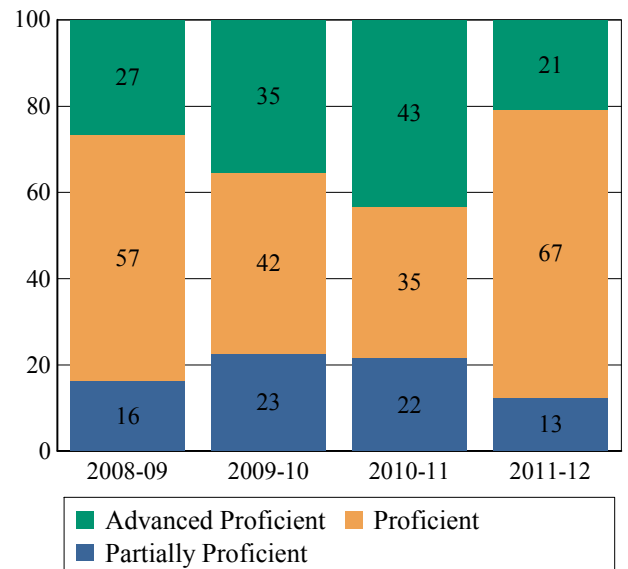
NJASK Proficiency Trends - Math - Grade Level - 03

This graph presents the grade level outcomes in the categories of Advanced Proficient, Proficient, and Partially Proficient over the last four years.



NJASK Proficiency Trends - Math - Grade Level - 04

This graph presents the grade level outcomes in the categories of Advanced Proficient, Proficient, and Partially Proficient over the last four years.





State of New Jersey

ACADEMIC ACHIEVEMENT

SUSSEX

OGDENSBURG BORO

GRADE SPAN PK-08

37-3840-050

OGDENSBURG

100 MAIN STREET

OGDENSBURG, NJ 07439

NJASK Results - Math Grade Level - 05

This table presents the grade level proficiency results, as measured by NJASK, in Advanced Proficient, Proficient, and Partially Proficient categories for all appropriate subgroups.

Subgroups	Advanced Proficient	Proficient	Partially Proficient
Schoolwide	36%	42%	22%
White	39%	42%	18%
Black	N/A	N/A	N/A
Hispanic	-	-	-
American Indian	N/A	N/A	N/A
Asian	-	-	-
Two or More Races	N/A	N/A	N/A
Students w/ Disability	18%	18%	64%
Limited English Proficient Students	N/A	N/A	N/A
Economically Disadvantaged Students	-	-	-

Data is presented for subgroups when the count is high enough under NCLB suppression rules.

NJASK Results - Math Grade Level - 06

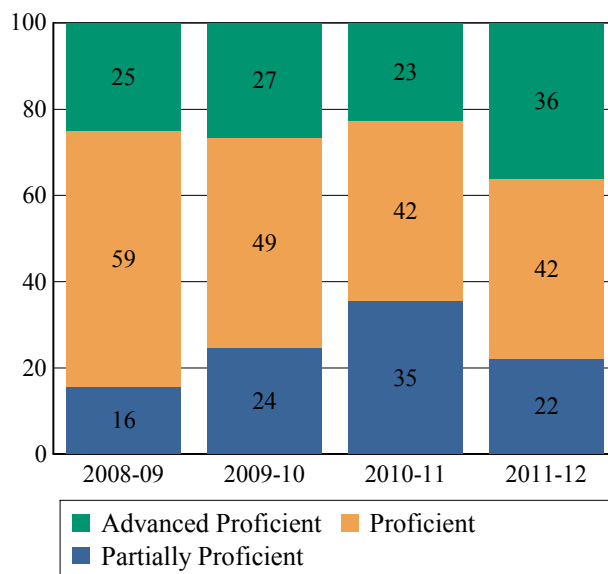
This table presents the grade level proficiency results, as measured by NJASK, in Advanced Proficient, Proficient, and Partially Proficient categories for all appropriate subgroups.

Subgroups	Advanced Proficient	Proficient	Partially Proficient
Schoolwide	23%	58%	19%
White	24%	59%	17%
Black	N/A	N/A	N/A
Hispanic	-	-	-
American Indian	N/A	N/A	N/A
Asian	-	-	-
Two or More Races	N/A	N/A	N/A
Students w/ Disability	-	-	-
Limited English Proficient Students	N/A	N/A	N/A
Economically Disadvantaged Students	-	-	-

Data is presented for subgroups when the count is high enough under NCLB suppression rules.

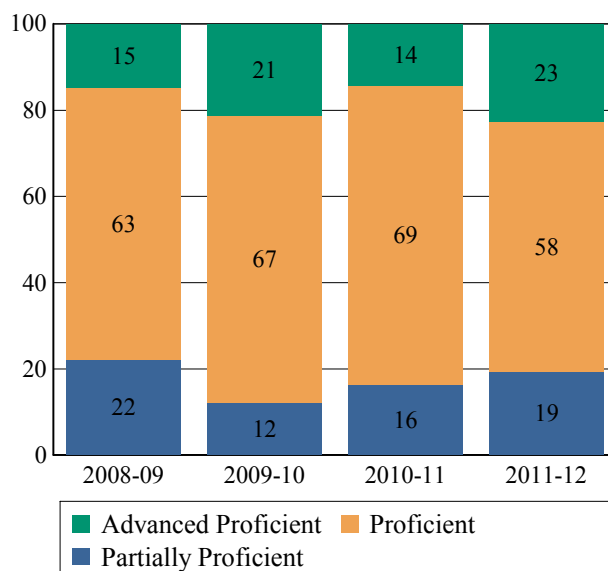
NJASK Proficiency Trends - Math - Grade Level - 05

This graph presents the grade level outcomes in the categories of Advanced Proficient, Proficient, and Partially Proficient over the last four years.



NJASK Proficiency Trends - Math - Grade Level - 06

This graph presents the grade level outcomes in the categories of Advanced Proficient, Proficient, and Partially Proficient over the last four years.





State of New Jersey

ACADEMIC ACHIEVEMENT

SUSSEX

OGDENSBURG BORO

GRADE SPAN PK-08

37-3840-050

OGDENSBURG

100 MAIN STREET

OGDENSBURG, NJ 07439

NJASK Results - Math Grade Level - 07

This table presents the grade level proficiency results, as measured by NJASK, in Advanced Proficient, Proficient, and Partially Proficient categories for all appropriate subgroups.

Subgroups	Advanced Proficient	Proficient	Partially Proficient
Schoolwide	20%	50%	30%
White	20%	50%	30%
Black	N/A	N/A	N/A
Hispanic	-	-	-
American Indian	N/A	N/A	N/A
Asian	N/A	N/A	N/A
Two or More Races	N/A	N/A	N/A
Students w/ Disability	-	-	-
Limited English Proficient Students	N/A	N/A	N/A
Economically Disadvantaged Students	-	-	-

Data is presented for subgroups when the count is high enough under NCLB suppression rules.

NJASK Results - Math Grade Level - 08

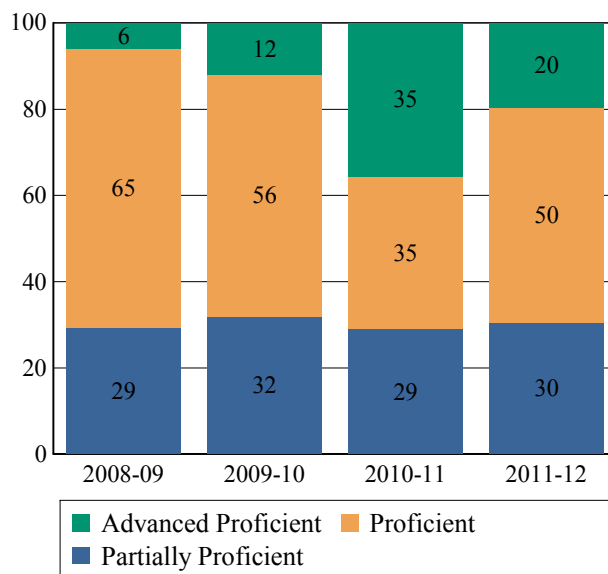
This table presents the grade level proficiency results, as measured by NJASK, in Advanced Proficient, Proficient, and Partially Proficient categories for all appropriate subgroups.

Subgroups	Advanced Proficient	Proficient	Partially Proficient
Schoolwide	38%	34%	28%
White	40%	33%	27%
Black	N/A	N/A	N/A
Hispanic	-	-	-
American Indian	N/A	N/A	N/A
Asian	N/A	N/A	N/A
Two or More Races	N/A	N/A	N/A
Students w/ Disability	-	-	-
Limited English Proficient Students	N/A	N/A	N/A
Economically Disadvantaged Students	-	-	-

Data is presented for subgroups when the count is high enough under NCLB suppression rules.

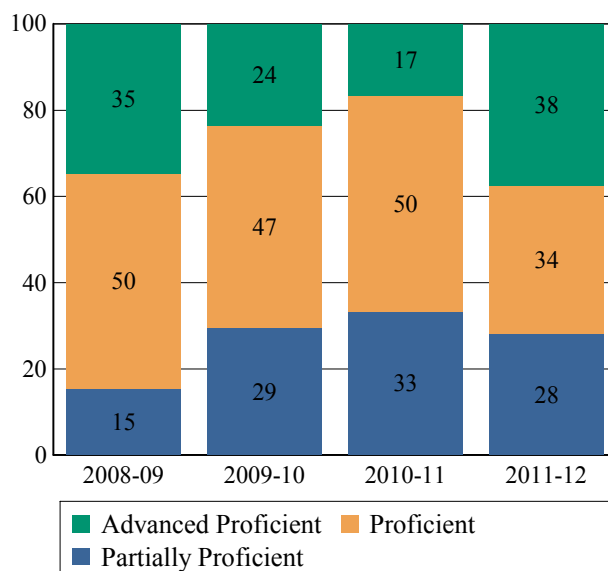
NJASK Proficiency Trends - Math - Grade Level - 07

This graph presents the grade level outcomes in the categories of Advanced Proficient, Proficient, and Partially Proficient over the last four years.



NJASK Proficiency Trends - Math - Grade Level - 08

This graph presents the grade level outcomes in the categories of Advanced Proficient, Proficient, and Partially Proficient over the last four years.





State of New Jersey

37-3840-050

OGDENSBURG

100 MAIN STREET

OGDENSBURG, NJ 07439

ACADEMIC ACHIEVEMENT

SUSSEX

OGDENSBURG BORO

GRADE SPAN PK-08

2011 National Assessment Educational Progress (NAEP)

The National Assessment of Educational Progress (NAEP) is the largest national assessment of what our nation's students know and can do. NAEP assesses fourth-, eighth-, and twelfth-grade students in subjects such as reading, mathematics, science, and writing. The reporting of NAEP scores on state report cards is a federal mandate. The results of NAEP are also published as the Nation's Report Card, and are available for the nation, states, and, in some cases, urban districts. The NAEP scores on the report card include grades four and eight 2011 reading and math scores for New Jersey which are the last scores published. For subgroup outcomes, visit :

<http://www.nj.gov/education/pr/2013/naep/naep4math.html>

For more information, visit <http://nces.ed.gov/nationsreportcard/>

Proficiency Percentages

Grade 4 Math	State/Nation	Below Basic	Basic	Proficient	Advanced
All Students	State (NJ)	11.0	38.3	40.9	9.8
All Students	Nation	18.1	42.3	33.2	6.5

2011 National Assessment Educational Progress (NAEP)

The National Assessment of Educational Progress (NAEP) is the largest national assessment of what our nation's students know and can do. NAEP assesses fourth-, eighth-, and twelfth-grade students in subjects such as reading, mathematics, science, and writing. The reporting of NAEP scores on state report cards is a federal mandate. The results of NAEP are also published as the Nation's Report Card, and are available for the nation, states, and, in some cases, urban districts. The NAEP scores on the report card include grades four and eight 2011 reading and math scores for New Jersey which are the last scores published. For subgroup outcomes, visit :

<http://www.nj.gov/education/pr/2013/naep/naep8math.html>

For more information, visit <http://nces.ed.gov/nationsreportcard/>

Proficiency Percentages

Grade 8 Math	State/Nation	Below Basic	Basic	Proficient	Advanced
All Students	State (NJ)	17.8	35.3	33.2	13.6
All Students	Nation	27.7	38.8	25.7	7.8



State of New Jersey

ACADEMIC ACHIEVEMENT

SUSSEX
OGDENSBURG BORO
OGDENSBURG, NJ 07439

GRADE SPAN PK-08

NJASK Results - Science Grade Level - 04

This table presents the grade level proficiency results, as measured by NJASK, in Advanced Proficient, Proficient, and Partially Proficient categories for all appropriate subgroups.

Subgroups	Advanced Proficient	Proficient	Partially Proficient
Schoolwide	50%	50%	0%
White	48%	52%	0%
Black	N/A	N/A	N/A
Hispanic	N/A	N/A	N/A
American Indian	N/A	N/A	N/A
Asian	-	-	-
Two or More Races	N/A	N/A	N/A
Students w/ Disability	-	-	-
Limited English Proficient Students	N/A	N/A	N/A
Economically Disadvantaged Students	-	-	-

Data is presented for subgroups when the count is high enough under NCLB suppression rules.

NJASK Results - Science Grade Level - 08

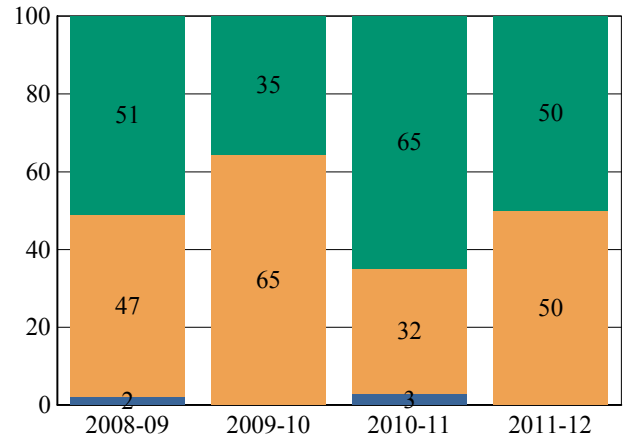
This table presents the grade level proficiency results, as measured by NJASK, in Advanced Proficient, Proficient, and Partially Proficient categories for all appropriate subgroups.

Subgroups	Advanced Proficient	Proficient	Partially Proficient
Schoolwide	41%	41%	19%
White	40%	43%	17%
Black	N/A	N/A	N/A
Hispanic	-	-	-
American Indian	N/A	N/A	N/A
Asian	N/A	N/A	N/A
Two or More Races	N/A	N/A	N/A
Students w/ Disability	-	-	-
Limited English Proficient Students	N/A	N/A	N/A
Economically Disadvantaged Students	-	-	-

Data is presented for subgroups when the count is high enough under NCLB suppression rules.

NJASK Proficiency Trends - Science - Grade Level - 04

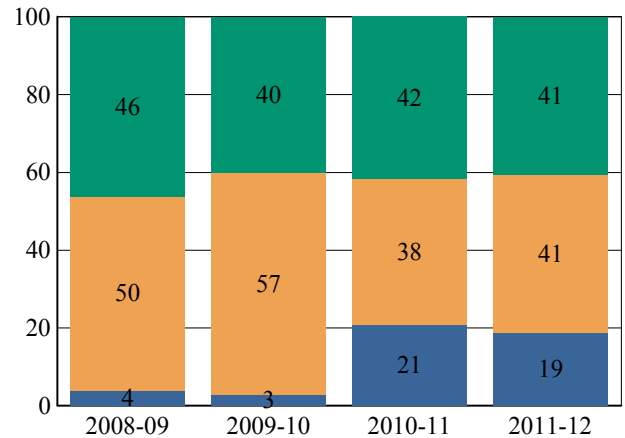
This graph presents the grade level outcomes in the categories of Advanced Proficient, Proficient, and Partially Proficient over the last four years.



Advanced Proficient Proficient Partially Proficient

NJASK Proficiency Trends - Science - Grade Level - 08

This graph presents the grade level outcomes in the categories of Advanced Proficient, Proficient, and Partially Proficient over the last four years.



Advanced Proficient Proficient Partially Proficient



State of New Jersey

COLLEGE AND CAREER READINESS

SUSSEX

OGDENSBURG BORO

GRADE SPAN PK-08

37-3840-050

OGDENSBURG

100 MAIN STREET

OGDENSBURG, NJ 07439

Students in both elementary and middle schools begin to demonstrate college readiness behaviors long before they even enter high school. Among the behaviors that research has shown to be indicative of success and college and career readiness are regularly attending school and challenging themselves with rigorous course work. First, the table presents the percentage of students, as measured against the school's enrollment in seventh and eighth grade, who were reported via NJSMART as being enrolled in Algebra I. The table also presents the percentage of students who were chronically absent during the prior school year. A chronically absent student is a student who was not present for any reason for more than 10% of the total days possible for that individual student.

The first column - Schoolwide Performance - represents the outcomes for these particular indicators in this school. The second column - Peer School Percentile Rank - indicates how the school's performance compares to its group of peer schools. For example, a school whose peer school rank is 65 in Algebra I Enrollment has a higher Algebra I Enrollment than 65% of its peer group. The third column - Statewide Percentile Rank - indicates how the school's performance compares to schools across the state. The fourth column - Statewide Target - provides the statewide targets for each of these indicators. The last column - Met Target? - indicates whether the School Performance met or exceeded the statewide target.

The Summary row presents the averages of the peer school percentile ranks, the average of statewide percentile ranks and the percentage of statewide targets met.

College and Career Readiness Indicators	School Performance	Peer Rank (Percentile)	Statewide Rank (Percentile)	Statewide Target	Met Target?
Students taking Algebra (%)	0%	0	0	20%	NO
Chronic Absenteeism (%)	8%	63	50	6%	NO
Summary		32	25		0%

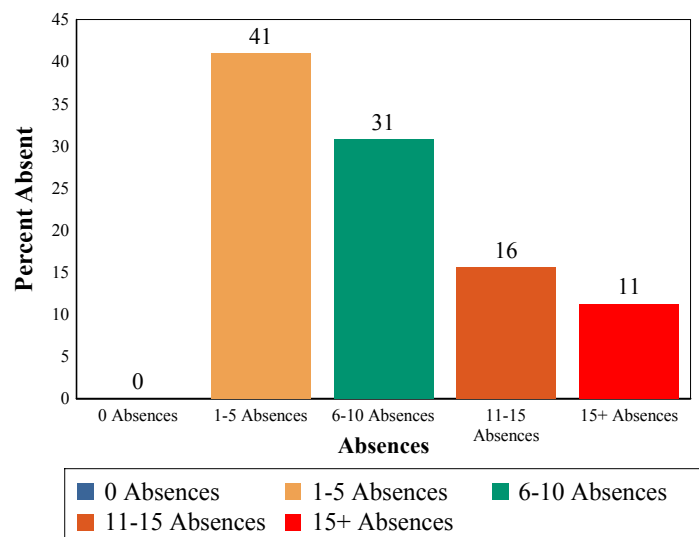
Algebra I

This table presents the percentage of seventh and eighth graders who were reported in the Algebra I course code in NJSMART and the percentage of those students who earned a C or higher in the course.

2011-12	School
Students taking Algebra I	0%
Algebra grade (C or better)	0%

Absenteeism

The chart below presents the percentage of students who were absent in each category of absence: 0 absences, 1- 5 absences, 6 - 10 absences, 11 - 15 absences, and more than 15 absences. An absence is defined as being 'not present' and includes the days missed regardless of whether they were determined to be excused or unexcused by the school.





State of New Jersey

37-3840-050

OGDENSBURG

100 MAIN STREET

OGDENSBURG, NJ 07439

STUDENT GROWTH

SUSSEX

OGDENSBURG BORO

GRADE SPAN PK-08

This section of the performance report presents data about student growth, utilizing the Student Growth Percentile Methodology (SGP). SGP creates a measure of how students progressed in grades 4 through 8 in NJ ASK Language Arts Literacy and Math when compared to other students with a similar NJ ASK test score history. A short video explaining the methodology can be found here: <http://www.state.nj.us/education/njsmart/performance/>

The first column - Schoolwide Performance - presents the schoolwide median growth score in either Language Arts Literacy or Math for all students in the school. The second column - Peer Rank - indicates how the school's growth performance compares to its group of peer schools. The third column - Statewide Rank - indicates how a school compares to schools across the state. The last column - Met Target? - indicates whether the school's performance met or exceeded the target.

The summary row presents the averages of the peer school percentile ranks, the averages of statewide percentile ranks, the percentage of statewide targets met.

Student Growth Indicators	Schoolwide Performance	Peer Rank (Percentile)	Statewide Rank (Percentile)	Statewide Target	Met Target?
Student Growth on Language Arts	40	15	16	35	YES
Student Growth on Math	40	19	20	35	YES
		17	18		100%

Student Growth

This table presents for all students with growth scores the interaction between their proficiency level on NJASK and their growth scores. For example, in the top left cell the percentage of students who are both partially proficient AND also demonstrating low growth is displayed.

Language Arts

	GROWTH		
	Low	Typical	High
Partially Proficient	27%	6%	4%
Proficient	21%	19%	19%
Advanced Proficient	0%	1%	3%

Math

	GROWTH		
	Low	Typical	High
Partially Proficient	17%	4%	2%
Proficient	23%	10%	16%
Advanced Proficient	6%	7%	14%

Low Growth is defined as an **Student Growth Percentile** score less than 35.

Typical Growth is defined as an **Student Growth Percentile** score between 35 and 65.

High Growth is defined as a **Student Growth Percentile** score higher than 65.



State of New Jersey

37-3840-050

OGDENSBURG

100 MAIN STREET

OGDENSBURG, NJ 07439

WITHIN SCHOOL ACHIEVEMENT GAP

SUSSEX

OGDENSBURG BORO

GRADE SPAN PK-08

This section of the performance report presents data about the achievement gap that exists within a school - as measured by the difference between the students' scale scores at the 25th and 75th percentile in the school, the so-called Interquartile Range (IQR). Taken together with an understanding of the overall and average achievement levels in the school, the IQR furthers an understanding of the range of student outcomes that exist in a school. A school gap smaller than the state gap indicates that the school's range of student outcomes is narrower than the state's while a school gap larger than the state gap indicates that the school's range of student outcomes is larger than the state's.

Grade Level - 03

NJ ASK Language Arts 25th %ile vs 75th%ile

This table presents the scale scores associated with students at the bottom (0th percentile), the 25th percentile, the 50th percentile, the 75th percentile and the top (99th percentile) of school's distribution

Percentile	Scale Score
99th	246
75th	216
50th	202
25th	194
0th	182

	Scale Score Gap - School	Scale Score Gap - State
25th vs 75th Gap	22	28

Grade Level - 04

NJ ASK Language Arts 25th %ile vs 75th%ile

This table presents the scale scores associated with students at the bottom (0th percentile), the 25th percentile, the 50th percentile, the 75th percentile and the top (99th percentile) of school's distribution

Percentile	Scale Score
99th	234
75th	209
50th	200
25th	181
0th	163

	Scale Score Gap - School	Scale Score Gap - State
25th vs 75th Gap	29	31

Grade Level - 03

NJ ASK Math 25th %ile vs 75th%ile

This table presents the scale scores associated with students at the bottom (0th percentile), the 25th percentile, the 50th percentile, the 75th percentile and the top (99th percentile) of school's distribution

Percentile	Scale Score
99th	283
75th	263
50th	232
25th	208
0th	184

	Scale Score Gap - School	Scale Score Gap - State
25th vs 75th Gap	55	61

Grade Level - 04

NJ ASK Math 25th %ile vs 75th%ile

This table presents the scale scores associated with students at the bottom (0th percentile), the 25th percentile, the 50th percentile, the 75th percentile and the top (99th percentile) of school's distribution

Percentile	Scale Score
99th	288
75th	240
50th	224
25th	214
0th	167

	Scale Score Gap - School	Scale Score Gap - State
25th vs 75th Gap	26	56



State of New Jersey

37-3840-050

OGDENSBURG

100 MAIN STREET

OGDENSBURG, NJ 07439

WITHIN SCHOOL ACHIEVEMENT GAP

SUSSEX

OGDENSBURG BORO

GRADE SPAN PK-08

Grade Level - 05

NJ ASK Language Arts 25th %ile vs 75th%ile

This table presents the scale scores associated with students at the bottom (0th percentile), the 25th percentile, the 50th percentile, the 75th percentile and the top (99th percentile) of school's distribution

Percentile	Scale Score
99th	247
75th	225
50th	207
25th	183
0th	152

	Scale Score Gap - School	Scale Score Gap - State
25th vs 75th Gap	42	38

Grade Level - 06

NJ ASK Language Arts 25th %ile vs 75th%ile

This table presents the scale scores associated with students at the bottom (0th percentile), the 25th percentile, the 50th percentile, the 75th percentile and the top (99th percentile) of school's distribution

Percentile	Scale Score
99th	246
75th	215
50th	205
25th	196
0th	182

	Scale Score Gap - School	Scale Score Gap - State
25th vs 75th Gap	19	34

Grade Level - 05

NJ ASK Math 25th %ile vs 75th%ile

This table presents the scale scores associated with students at the bottom (0th percentile), the 25th percentile, the 50th percentile, the 75th percentile and the top (99th percentile) of school's distribution

Percentile	Scale Score
99th	287
75th	255
50th	231
25th	200
0th	146

	Scale Score Gap - School	Scale Score Gap - State
25th vs 75th Gap	55	56

Grade Level - 06

NJ ASK Math 25th %ile vs 75th%ile

This table presents the scale scores associated with students at the bottom (0th percentile), the 25th percentile, the 50th percentile, the 75th percentile and the top (99th percentile) of school's distribution

Percentile	Scale Score
99th	288
75th	243
50th	221
25th	200
0th	189

	Scale Score Gap - School	Scale Score Gap - State
25th vs 75th Gap	43	57



State of New Jersey

37-3840-050

OGDENSBURG

100 MAIN STREET

OGDENSBURG, NJ 07439

WITHIN SCHOOL ACHIEVEMENT GAP

SUSSEX

OGDENSBURG BORO

GRADE SPAN PK-08

Grade Level - 07

NJ ASK Language Arts 25th %ile vs 75th%ile

This table presents the scale scores associated with students at the bottom (0th percentile), the 25th percentile, the 50th percentile, the 75th percentile and the top (99th percentile) of school's distribution

Percentile	Scale Score
99th	261
75th	224
50th	211
25th	187
0th	123

	Scale Score Gap - School	Scale Score Gap - State
25th vs 75th Gap	38	44

Grade Level - 08

NJ ASK Language Arts 25th %ile vs 75th%ile

This table presents the scale scores associated with students at the bottom (0th percentile), the 25th percentile, the 50th percentile, the 75th percentile and the top (99th percentile) of school's distribution

Percentile	Scale Score
99th	257
75th	236
50th	220
25th	201
0th	154

	Scale Score Gap - School	Scale Score Gap - State
25th vs 75th Gap	35	33

Grade Level - 07

NJ ASK Math 25th %ile vs 75th%ile

This table presents the scale scores associated with students at the bottom (0th percentile), the 25th percentile, the 50th percentile, the 75th percentile and the top (99th percentile) of school's distribution

Percentile	Scale Score
99th	300
75th	237
50th	218
25th	197
0th	136

	Scale Score Gap - School	Scale Score Gap - State
25th vs 75th Gap	40	61

Grade Level - 08

NJ ASK Math 25th %ile vs 75th%ile

This table presents the scale scores associated with students at the bottom (0th percentile), the 25th percentile, the 50th percentile, the 75th percentile and the top (99th percentile) of school's distribution

Percentile	Scale Score
99th	298
75th	262
50th	229
25th	174
0th	135

	Scale Score Gap - School	Scale Score Gap - State
25th vs 75th Gap	88	64



State of New Jersey

SCHOOL CLIMATE

SUSSEX

OGDENSBURG BORO

GRADE SPAN PK-08

37-3840-050

OGDENSBURG

100 MAIN STREET

OGDENSBURG, NJ 07439

Length of School Day

This table presents the amount of time a school is in session for a typical student on a normal school day.

	School
2011-12	6 Hrs 45 Mins

Instructional Time

This table presents the amount of time that a typical student is engaged in instructional activities under the supervision of a certified teacher.

2011-12	School
Full Time	5 Hrs 55 Mins.
Shared Time	0 Hrs. 0 Mins.

Student Suspension Rate

This table presents the percentage of students who were suspended one or more times during the school year.

	School
2011-12	5.0%

Student Expulsions

This table presents the number of students who were expelled from the school and district during the school year.

	School
2011-12	0

Student to Staff Ratio

This table presents the count of students per faculty member or administrator in the school. All staff are counted in full-time equivalents.

2011-12	School
Faculty	9.9
Administrators	175.9

SCHOOL PEER GROUP**OGDENSBURG****37-3840-050**

This table presents the list of peer schools in alphabetical order by county name that was created specifically for this school (highlighted in yellow). Peer schools are drawn from across the state and represent schools that have similar grade configurations and that are educating students of similar demographic characteristics, as measured by enrollment in Free/Reduced Lunch Programs, Limited English Proficiency or Special Education Programs.

<u>COUNTY NAME</u>	<u>DISTRICT NAME</u>	<u>SCHOOL NAME</u>	<u>CDS</u> <u>CODE</u>	<u>GRADE</u> <u>SPAN</u>	<u>FRPL</u>	<u>LEP</u>	<u>SpED</u>
BERGEN	RIDGEFIELD BORO	SLOCUM SKEWES SCHOOL	03-4370-100	03-08	26.1%	1.4%	28.3%
BURLINGTON	RIVERTON	RIVERTON	05-4460-050	PK-08	17.0%	0.0%	17.3%
BURLINGTON	SOUTHAMPTON TWP	SOUTHAMPTON TWP SCH NO 3	05-4930-070	06-08	15.3%	0.4%	18.1%
CAMDEN	CHERRY HILL TWP	HENRY C BECK MIDDLE SCH	07-0800-073	06-08	13.6%	0.0%	17.8%
CAMDEN	CHERRY HILL TWP	ROSA INTERNATIONAL M S	07-0800-074	06-08	10.2%	0.0%	16.2%
CAPE MAY	DENNIS TWP	DENNIS TWP ELEM MID SCH	09-1080-050	03-08	22.7%	0.0%	18.6%
CAPE MAY	OCEAN CITY	INTERMEDIATE	09-3780-060	04-08	15.1%	0.2%	21.5%
CHARTERS	SUSSEX COUNTY CS FOR TECHNOLOGY	SUSSEX COUNTY CS FOR TECHNOLOG	80-7850-960	06-08	16.1%	0.0%	21.0%
ESSEX	MONTCLAIR TOWN	MT HEBRON MIDDLE SCHOOL	13-3310-127	06-08	16.3%	0.5%	20.8%
GLOUCESTER	KINGSWAY REGIONAL	KINGSWAY REG MIDDLE	15-2440-060	07-08	13.1%	0.1%	19.6%
GLOUCESTER	WASHINGTON TWP	BUNKER HILL MIDDLE SCH	15-5500-020	06-08	16.1%	0.0%	18.9%
GLOUCESTER	WASHINGTON TWP	CHESTNUT RIDGE MIDDLE	15-5500-026	06-08	15.0%	0.0%	17.3%
MONMOUTH	HAZLET TWP	HAZLET MIDDLE SCHOOL	25-2105-105	07-08	12.1%	0.2%	19.3%
MONMOUTH	HOWELL TWP	HOWELL TWP MEMORIAL MS	25-2290-045	06-08	10.2%	0.0%	16.2%
MONMOUTH	MIDDLETOWN TWP	BAYSHORE MIDDLE SCHOOL	25-3160-055	06-08	15.1%	0.4%	18.2%
MONMOUTH	MIDDLETOWN TWP	THORNE MIDDLE SCHOOL	25-3160-059	06-08	18.3%	0.1%	18.9%
MORRIS	BUTLER BORO	RICHARD BUTLER	27-0630-030	05-08	12.9%	0.4%	18.2%
MORRIS	MOUNT ARLINGTON BORO	MT ARLINGTON	27-3410-050	03-08	11.1%	0.0%	18.8%
OCEAN	BRICK TWP	VETERANS MEM MIDDLE SCH	29-0530-090	06-08	20.9%	0.0%	19.9%
OCEAN	POINT PLEASANT BORO	MEMORIAL MIDDLE SCHOOL	29-4210-050	06-08	13.3%	0.1%	16.4%
PASSAIC	HAWTHORNE BORO	LINCOLN MIDDLE	31-2100-070	06-08	24.1%	0.0%	24.3%
PASSAIC	WEST MILFORD TWP	MACOPIN	31-5650-055	07-08	10.6%	0.0%	18.4%
SUSSEX	HOPATCONG	HOPATCONG MIDDLE	37-2240-040	06-08	24.3%	0.0%	24.8%
SUSSEX	OGDENSBURG BORO	OGDENSBURG	37-3840-050	PK-08	15.8%	0.0%	18.7%
SUSSEX	SUSSEX-WANTAGE REGIONAL	SUSSEX MIDDLE SCHOOL	37-5100-060	06-08	22.5%	0.0%	20.9%
WARREN	BELVIDERE TOWN	OXFORD STREET	41-0280-030	PK-08	23.7%	0.0%	24.2%
WARREN	WHITE TWP	WHITE TWP CONS	41-5780-050	PK-08	13.8%	0.0%	21.2%