

[Home](#) / [Worker Protections](#) / [Paid Sick Leave](#) / Earned Sick Leave Is the Law in New Jersey

## Earned Sick Leave Is the Law in New Jersey



Employers of all sizes must provide full-time, part-time, and temporary employees with up to 40 hours of earned sick leave per year so they can care for themselves or a loved one.


**This law applies to almost all employees in New Jersey.**


[Read the Earned Sick Leave law](#)


[Read the final Earned Sick Leave rules](#)

[For employees](#)

[For employers](#) 

[What parents and guardians need to know](#) 

[Help spread the word](#) 

[Printable resources in multiple languages](#) 

How can I use my earned sick time?

How do I receive my pay if I use my earned sick time and how long does it take?

Who's covered by the law?

Notice of Employee Rights

Earned sick leave accrual and use

Payment of earned sick leave

Definition of family members

Coping with domestic or sexual violence

Advance notice

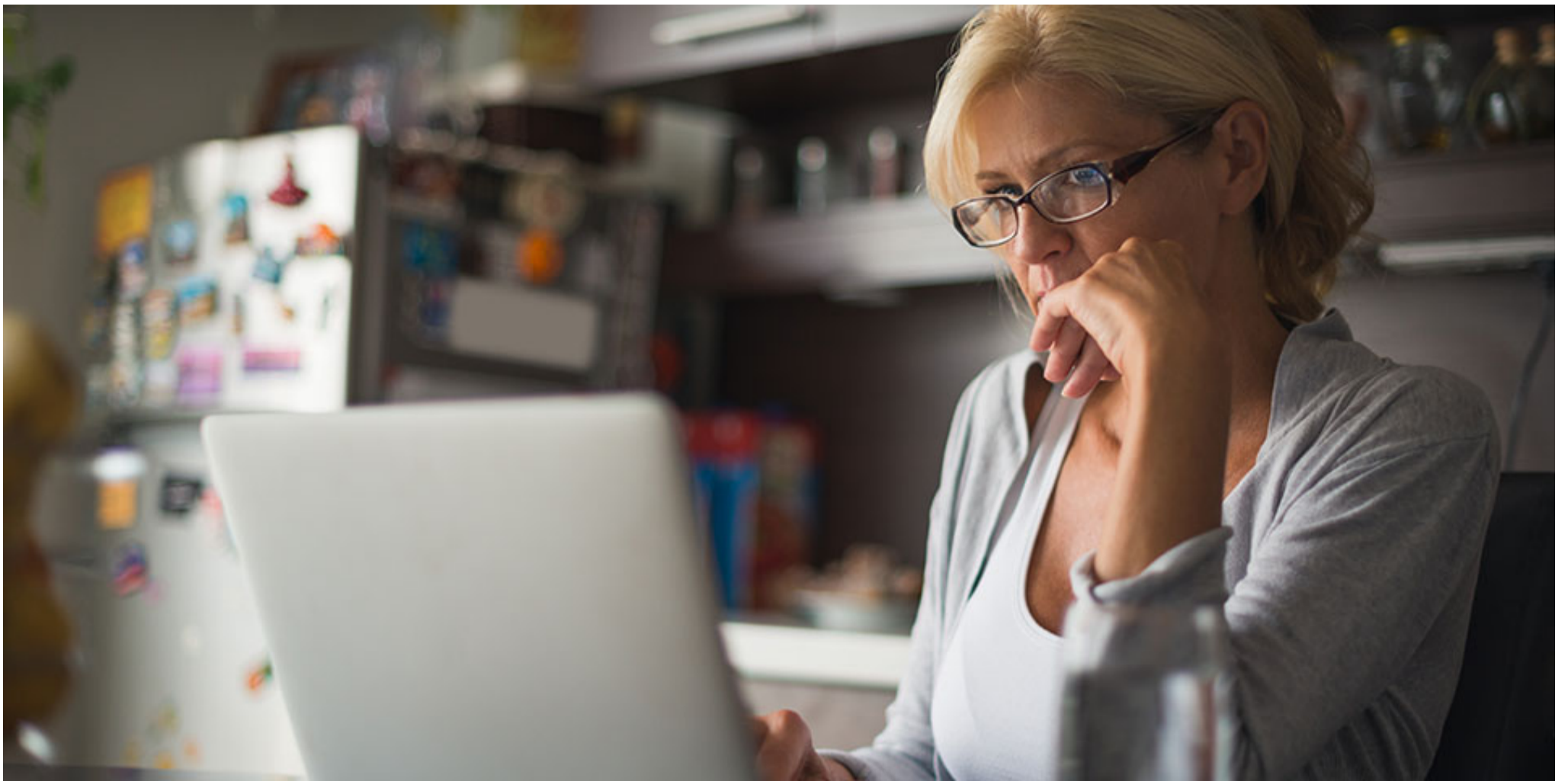
Documentation

Unused earned sick leave

Retaliation

Need more time to care for yourself or a loved one?

Need to file a complaint?



### **Make a complaint**

---

If you believe that your employer has not provided you sick leave that you're entitled to, or you have a question about your situation, NJDOL can help.

- File a complaint [online through our secure system](#)
- Contact us [by mail or fax](#)



### **Help us spread the word!**


---

Download shareable information and social media blurbs and images to help let your coworkers, friends, and community organizations learn more about paid sick time.

- [Media kit](#) for school communities and working parents/guardians (includes social media posts and images)
- Printable handouts for working parents/guardians in [English](#) and [Spanish/español](#)

### **Printable information and handouts for employees and employers**

---

 [Click here for a list of documents you can download](#)

## Department of Labor and Workforce Development

[Home](#)

[File or Access Your Claim](#)

[Worker Protections](#)

[Career Support](#)

[Employer Services](#)

[Research & Information](#)

[About Us](#)

### Statewide

[Governor Phil Murphy](#)

[Lt. Governor Tahesha Way](#)

[NJ Home](#)

[Services A to Z](#)

[Departments/Agencies](#)

[Contact Us](#)

[Privacy Notice](#)

[Legal Statement & Disclaimers](#)

[Accessibility Statement](#)



Copyright © State of New Jersey, 1996-2023

Department of Labor

1 John Fitch Plz,

Trenton, NJ 08611