

September 2009



New Jersey

ECONOMIC INDICATORS

Jon S. Corzine
Governor

NEW JERSEY DEPARTMENT OF

LWD

LABOR AND WORKFORCE DEVELOPMENT
nj.gov/labor

David J. Socolow
Commissioner

NEW JERSEY ECONOMIC INDICATORS

No. 517 Based on data through September 27, 2009

The Economy

New Jersey's Economy by the Numbers	1
The Economic Situation	2
Comparison of Economic Trends in New Jersey and the US	6

Labor Area Focus

Regional Analysts' Corner	9
Nonfarm Payroll Employment in New Jersey Labor Areas	10
Civilian Labor Force Data for New Jersey Labor Areas	11

Statistical Section

Indicator Series, 1 to 27, Historical Tables and Charts	S-2 — S-19
Indicator Series, 1 to 27, Annual Averages	S-20
Nonfarm Payroll Employment in New Jersey (seasonally adjusted)	S-21
Nonfarm Payroll Employment in New Jersey (not seasonally adjusted)	S-22
Hours and Earnings of Production/Nonsupervisory Workers	S-26
Comparative US and NJ Civilian Labor Force Trends	S-27
Characteristics of New Jersey's Insured Unemployed	S-28
Sources and Notes	S-29

New Jersey Economic Indicators (ISSN 1064-5942) is published monthly except February (due to annual revisions). The report is prepared with the cooperation of other state and federal agencies by the New Jersey Department of Labor and Workforce Development, Division of Labor Market and Demographic Research. For information, please contact JoAnne Caramelo at the New Jersey Department of Labor and Workforce Development, PO Box 057, Trenton, NJ 08625-0057, phone: (609) 292-2582 or e-mail: joanne.caramelo@dol.state.nj.us.

RESTRICTIONS: All material may be reprinted without permission; however, it would be appreciated if appropriate credit were given.

ON THE INTERNET: Current and recent back issues are available via the *Labor Planning and Analysis* Web site (**lwd.dol.state.nj.us/labor/lpa**)

Comparative Economic Indicators: New Jersey and United States

New Jersey Data (Seasonally adjusted)			Latest Data	Data Series	Page Number	Year-to-Date % change from year ago (Unadjusted)	
Latest Month	Month Ago	Year Ago				NJ	US
\$440,318	\$442,450	\$441,236	1 st Quarter 09	Personal Income (millions)*	----	-0.2	0.8
32,197	34,090	31,205	Jul	New Vehicle Registrations***	S-16	-27.8	-32.4
763	869	1,301	Jul	Dwelling Units Authorized**	S-14	-46.3	-47.7
3,930.5	3,929.7	4,051.1	Aug	Nonfarm Payroll Employment (000)	S-6	-3.1	-3.7
3,288.3	3,285.4	3,401.4	Aug	Private Sector Employment (000)	S-6	-3.7	-4.5
114.1	144.0	163.1	Aug	Construction Employment (000)	S-6	-12.4	-13.1
273.1	275.5	298.8	Aug	Manufacturing Employment (000)	S-8	-9.4	-10.8
839.7	836.6	864.7	Aug	Trade, Transportation & Utilities Employment (000)	S-8	-12.4	-8.7
89.5	88.6	91.8	Aug	Information Employment (000)	S-8	-2.8	-4.6
255.2	256.4	268.7	Aug	Financial Activities Employment (000)	S-10	-5.3	-4.6
584.2	582.4	615.3	Aug	Professional & Business Services Employment (000)	S-10	-6.1	-6.0
593.6	593.5	591.0	Aug	Educational & Health Services Employment (000)	S-10	1.4	2.3
338.6	338.7	340.2	Aug	Leisure & Hospitality Employment (000)	S-12	-1.6	-2.3
168.6	168.0	166.1	Aug	Other Services Employment (000)	----	-0.1	-1.9
642.2	644.3	649.7	Aug	Total Government Employment (000)	----	-0.2	0.3
438.7	423.1	254.8	Aug	Total Unemployment (000)	S-2	72.1	67.5
9.7	9.3	5.7	Aug	Total Unemployment Rate (%)	S-4	----	----
195.5	206.4	132.1	Aug	Insured Unemployment Volume (000)	S-18	66.7	95.3
5.0	5.3	3.4	Aug	Insured Unemployment Rate (%)	S-18	----	----
41.4	41.5	41.5	Aug	Average Factory Workweek (hours)**	S-26	-1.7	-3.6
18.25	18.31	17.93	Aug	Average Factory Hourly Earnings**	S-26	3.4	2.6
755.55	759.87	744.10	Aug	Average Factory Weekly Earnings**	S-26	1.7	-1.1

Notes: See pages S-29 to S-32 for notes on indicators' series. (Private service-providing data are found in 13-month tables on page S-21.)

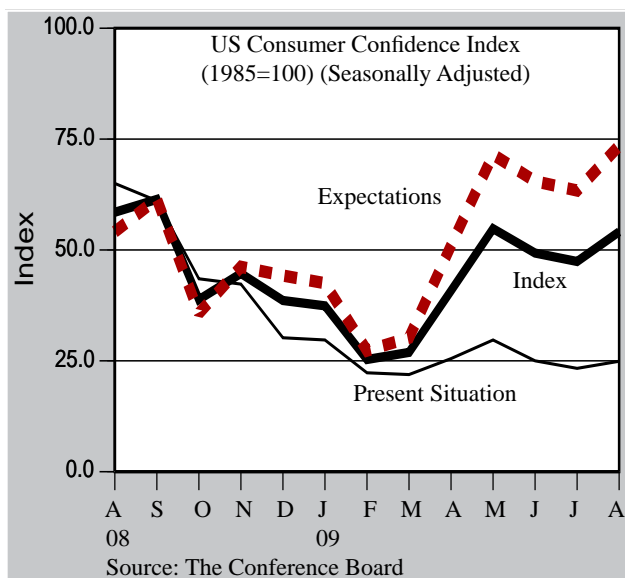
* *Latest Month - 1st Qtr. 2009; Month Ago - 4th Qtr. 2008; Year Ago - 1st Qtr. 2008 (annualized data)*

** *Not seasonally adjusted.*

*** *Includes only total new cars and new light trucks/vans (weight class 0-10,000 lbs.) registered in NJ.*

Economic Situation: The Nation

The economy's recent performance has been in line with general expectations. Employment continued to fall but at a declining rate and the stock market continued an impressive run which began in March. While most experts feel the economy is now growing, the growth may not be evident until the advance third quarter GDP report is released in late October. Still, most experts also expect the unemployment rate, a lagging indicator, to rise through the end of the year and into 2010.



There are also a number of concerns facing the economy. Mortgage foreclosures remain high despite a modest decline in August. Personal income growth has been negative or flat for several months and needs to improve in order to support consumer spending, which is essential for a sustained recovery. Increased personal income is also necessary to increase consumer confidence.

The Conference Board's consumer confidence index rebounded in August. The index now stands at 54.1, up from 47.4 in July due to an increase in the expectations index.

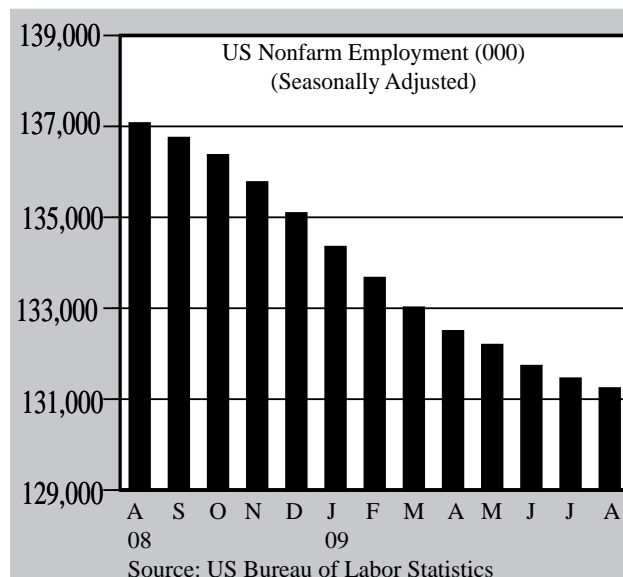
The present situation was largely unchanged. More recently, the Reuters/University of Michigan survey for September showed increasing consumer confidence. The September index jumped to 73.5, up from 65.7 in August.

Growing consumer confidence was reflected in the Census Bureau's closely watched retail sales report for August which showed a sharp increase of 2.7 percent although sales were down 5.3 percent from a year ago. Sales were led by a 10.6 monthly increase in motor vehicle and parts sales which was driven by the popular "cash for clunkers" program. Excluding automobile sales, sales were up 1.1 percent. Sales increases were also evident in many other sectors. Gasoline station sales were up 5.1 percent while clothing sales were up 2.4 percent and general merchandise sales were up 1.6 percent.

In August, nonfarm payroll employment declined by 216,000 jobs, down from July's loss of 276,000 jobs. The August decline was the smallest since August 2008 when 175,000 jobs were lost. Employment losses peaked in January of 2009 at 741,000 jobs. Most experts are expecting continuing employment declines through the rest of 2009. Year-to-date national nonfarm payroll employment is down 3.7 percent.

August job losses were spread across all sectors with the exception of education and health services which added 52,000 jobs. The largest declines occurred in construction (-65,000) and manufacturing (-63,000).

August job losses were spread across all sectors with the exception of education and health services which added 52,000 jobs. The largest declines occurred in construction (-65,000) and manufacturing (-63,000).



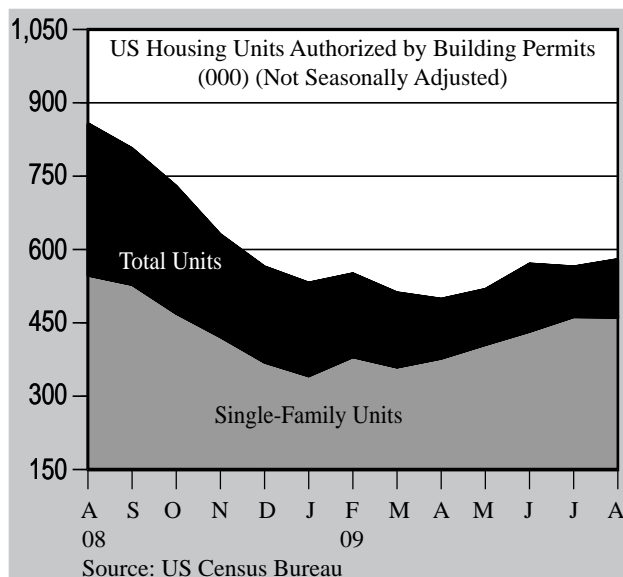
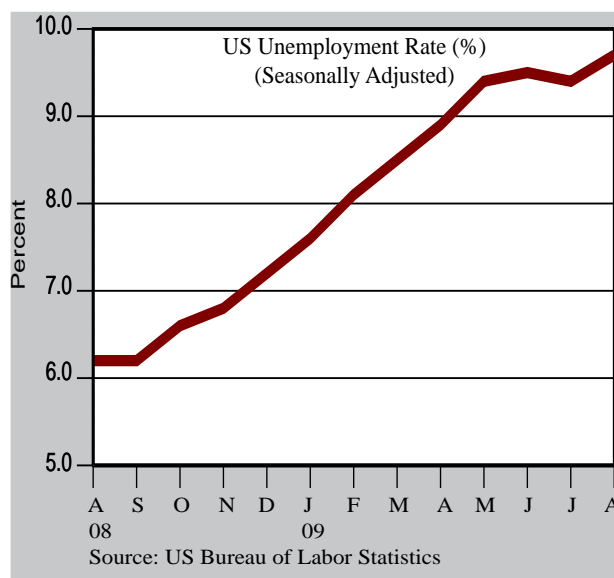
Economic Situation: The Nation

The August unemployment rate increased to 9.7 percent, up from 9.4 percent in July. The August labor force participation rate was unchanged. The number of unemployed increased by 466,000, to 14.9 million. The number of employed declined by 392,000, to 139.6 million. The percentage of unemployed who have been unemployed 27 weeks and over was 33.3 percent, up from 19.6 percent last August. The number of residents working part time for economic reasons increased by 278,000 after declining in July. August's unemployment rate is the highest since June 1983 when the national rate was 10.1 percent.

Construction spending in July was down 0.2 percent from June and 10.5 percent from July 2008. Residential construction increased by 2.3 percent, but a decline of 1.0 percent in the nonresidential construction segment resulted in an overall decline. July's increase in private construction was not enough to offset declines in public construction.

August's Consumer Price Index was up 0.4 percent from July. The increase was due largely to a 4.6 percent rise in energy prices. Since last August, on an unadjusted basis, prices have declined by 1.5 percent. The report reflects low inflation in the economy due mainly to overall weak demand.

In August, the Federal Reserve Board reported that both industrial production and capacity utilization realized significant gains. Industrial production increased for the second consecutive month in August. The 0.8 percent gain exceeded analysts expectations while the July estimate was revised upward to 1.0 percent. Capacity utilization also increased for the second consecutive month. In August, capacity utilization increased to 69.6 percent, up from 69.0 percent in July. In August of last year, capacity utilization was 77.6 percent.

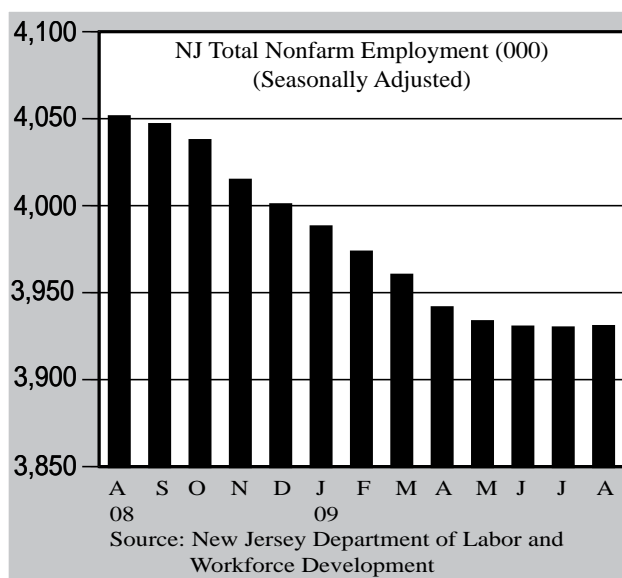


The Census Bureau's report on new residential construction showed some positive trends. Building permits were up 2.7 percent for the month but down 32.4 percent over the year. Housing units started were up 1.5 percent over the month but down 29.6 percent from last year. The large declines from a year ago simply reflect the depth of the downturn in residential real estate.

In August, existing home sales declined by 2.7 percent since July but were up over the levels for last August. New home sales were up 0.7 percent over the month and were down 3.4 percent from August 2008. The inventory of unsold new homes was down to 7.3 months after reaching double digit levels in the second half of 2008.

Economic Situation: The State

Recent key economic indicators for New Jersey, like the nation, are mixed. In New Jersey, total payroll employment increased in August and private sector employment increased for the second consecutive month. The unemployment rate in both the nation and state reached 9.7 percent in August.



The general expectation is that employment, in both the nation and state, will continue to decline, though at a slower rate, through the end of this year. Unemployment rates are also expected to continue to rise over this period and possibly reach double digits before trending down. On a positive note, the Federal Reserve Bank of Philadelphia's leading index for New Jersey was positive in July for the first time since February of 2008. The index for Pennsylvania and Delaware continued to decline.

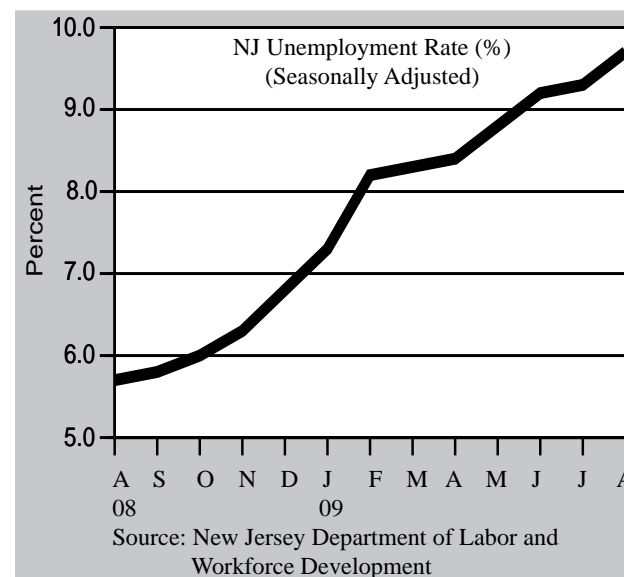
In August, nonfarm payrolls added 800 jobs, following the loss of 500 jobs in July. Like the nation, employment losses in New Jersey have lessened in recent months.

Through the first six months of this year, employment losses averaged 11,700 per month. In April, losses peaked at 18,700 and have since been sharply lower. Year-to-date, employment was down 3.1 percent in the state compared with 3.7 percent nationally.

In August, an increase of 2,900 private sector jobs offset the loss of 2,100 public sector jobs, resulting in a net gain of 800 jobs. In the private sector, manufacturing employment was down 2,400 while construction employment was effectively unchanged, increasing by 100 jobs. Trade, transportation & utilities added 3,100 jobs, 1,700 of which were in wholesale trade, and professional and business services added 1,800. Education and health services added 100 jobs. Financial activities was lower by 1,200 jobs while leisure and hospitality fell 100. Public sector employment declined by 2,100 jobs, with the largest losses occurring in local government (-1,500 jobs).

Since the recession began in December of 2007, New Jersey has lost 155,700 jobs or 3.8 percent of its employment base, compared with 5.0 percent nationally. New Jersey employment losses in the goods producing industries have been severe – 60,200 jobs or 12.6 percent of the total. Construction and manufacturing each declined by more than 10 percent since the start of the recession.

Employment declines in the service-providing industries have been less severe (-2.6%). Financial activities (-6.8%) and professional and business services (-6.1%) have suffered the largest losses. Educational and health services and other services are the only

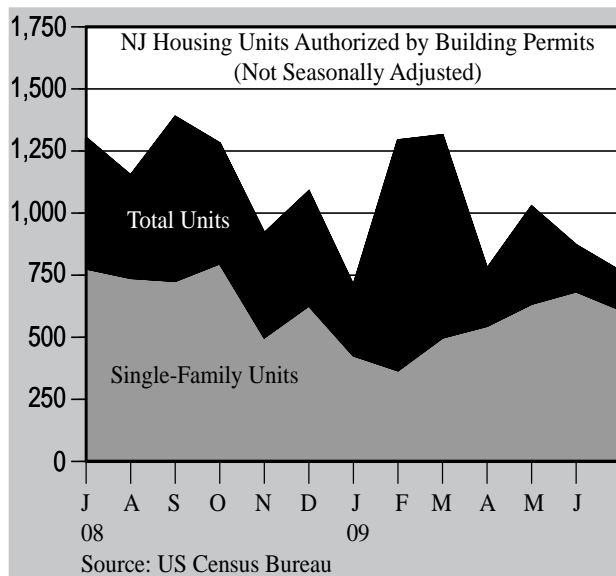


Economic Situation: The State

two industries that have experienced employment growth. Growth in educational and health services, New Jersey's largest industry sector, has been a modest 1.5 percent.

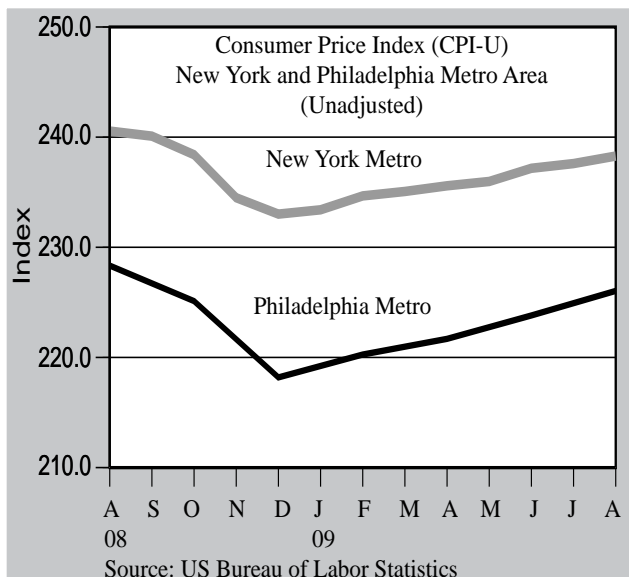
In August, New Jersey's unemployment rate increased to 9.7 percent, matching the national rate. The state's rate was up from 9.3 percent in July and 5.7 percent since August a year ago. The rate is the highest in New Jersey since April of 1977 when the rate was 9.9 percent. In August, the state labor force participation rate declined to 66.7 percent from 67.1 percent in July.

Rising unemployment was widespread across the nation in August. Forty-two states lost jobs, up from 29 in July. Twenty seven states saw their unemployment rate increase while 14 states plus the District of Columbia reported double digit unemployment. Michigan, Nevada, and Rhode Island led the nation in unemployment with rates of 15.2 percent, 13.2 percent, and 12.8 percent, respectively.



In July, building permits declined to 763, down from 869 in June. The July total was the lowest monthly total since January 2009 and was 41.0 percent lower than for July a year ago. Year-to-date, building permits are 46.3 percent lower than at the same time last year. However, the Census Bureau's new construction report for August showed some positive developments for the Northeastern region. Regional building permits were up 14.3 percent while housing starts were up 23.8 percent. Both increases were the highest among the regions.

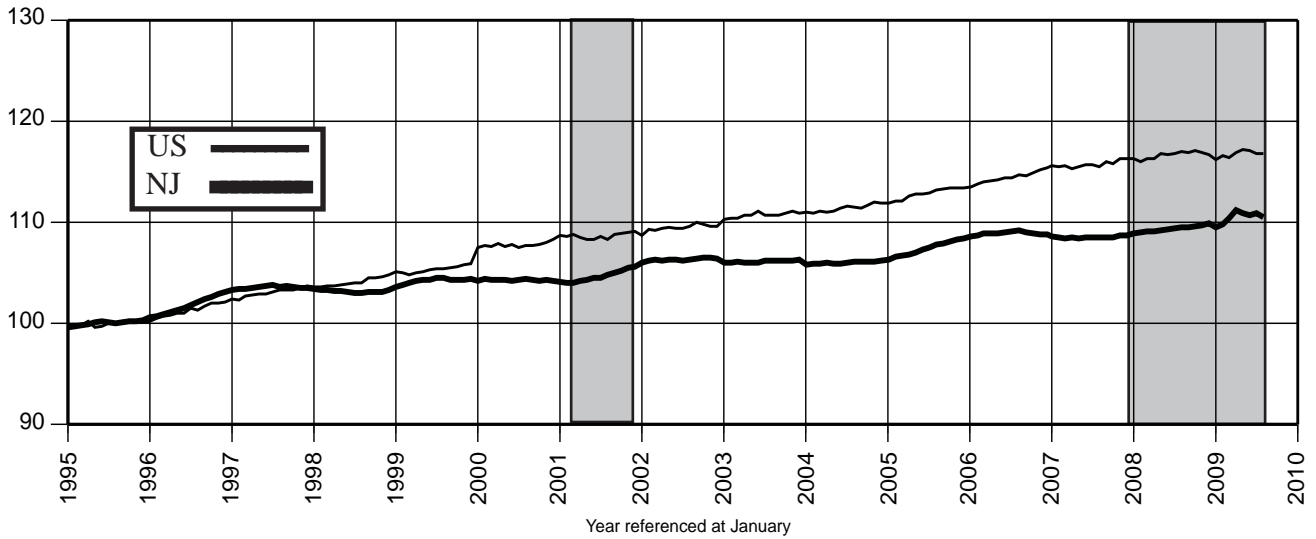
Existing home sales in the Northeast declined 2.2 percent in August but were 5.8 percent above the level of last August. The median sales price was down 10.5 percent over the year. New home sales in the Northeast were down 16.3 percent in August, following a very large increase in July. Over the year, sales were up a robust 28.6 percent.



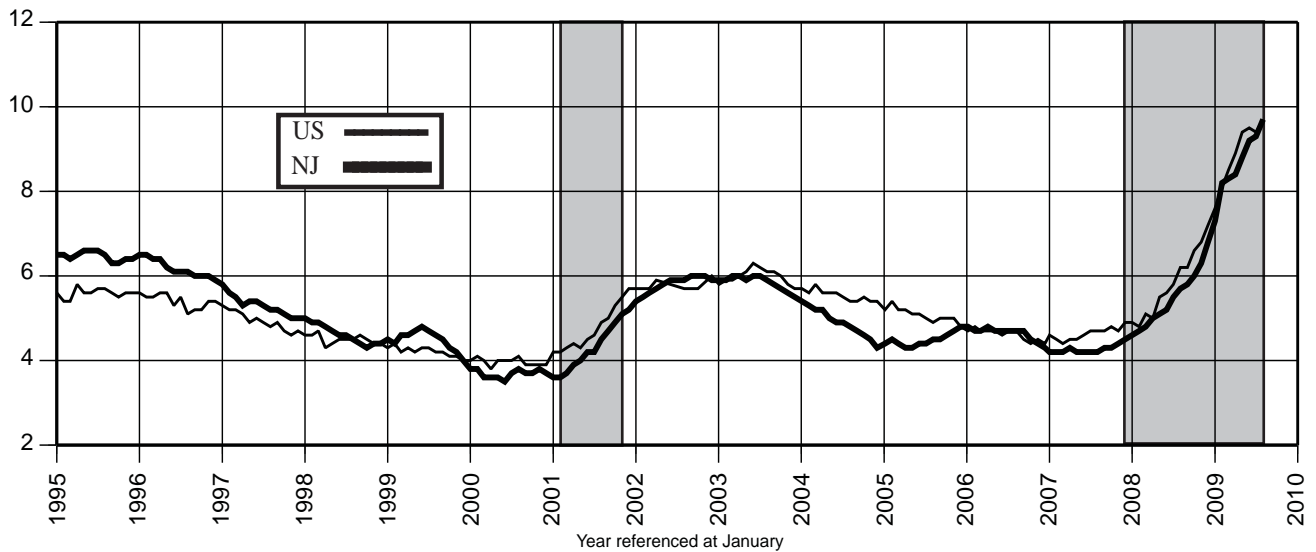
The likely continued high level of unemployment may keep mortgage foreclosures at higher levels. In August, New Jersey had one mortgage foreclosure for every 412 households while the national average was one for every 357 households. Over the month, the nation had a modest decline while the state had an increase due to a backlog in processing foreclosures.

In August, there was no evidence of upward pressure on consumer prices. Over the year, prices are down by approximately 1.5 percent for the nation and approximately 1.0 percent in both the Philadelphia and New York regions.

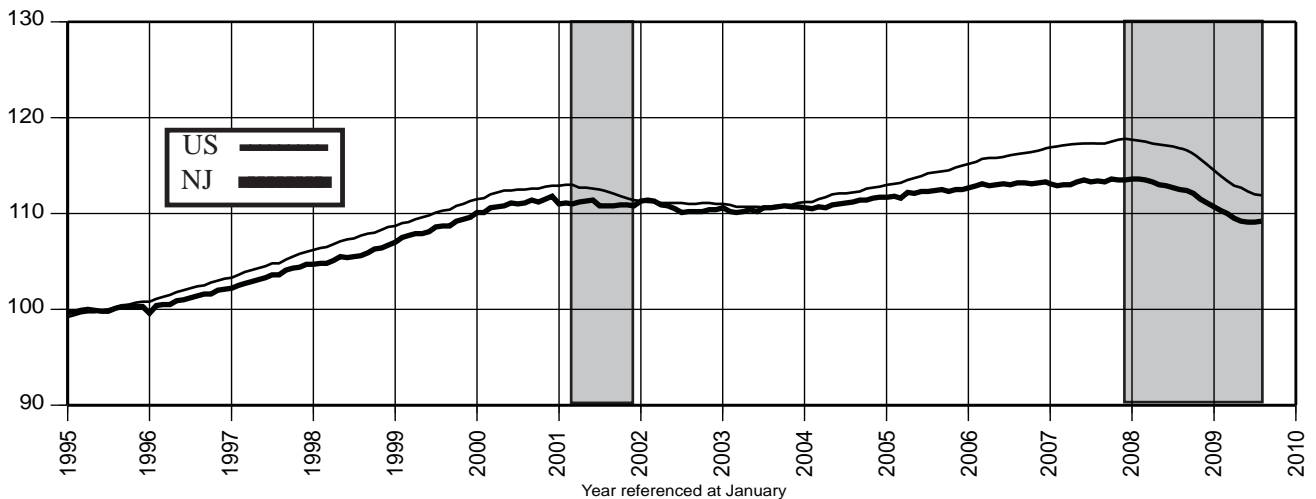
Civilian Labor Force (1995=100)



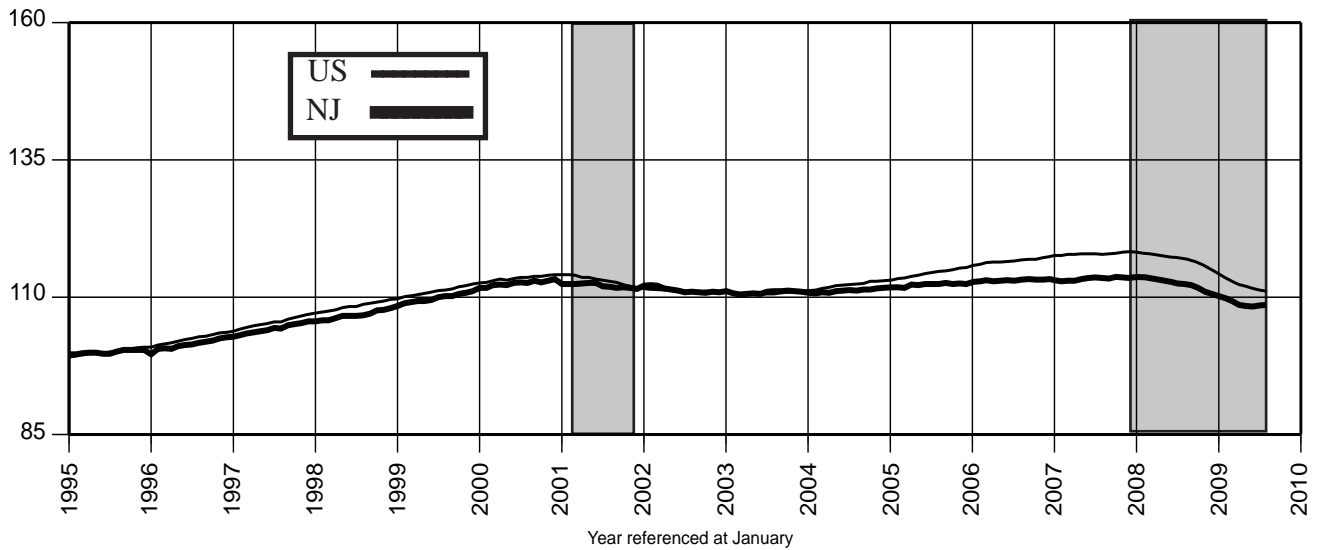
Unemployment Rate (%)



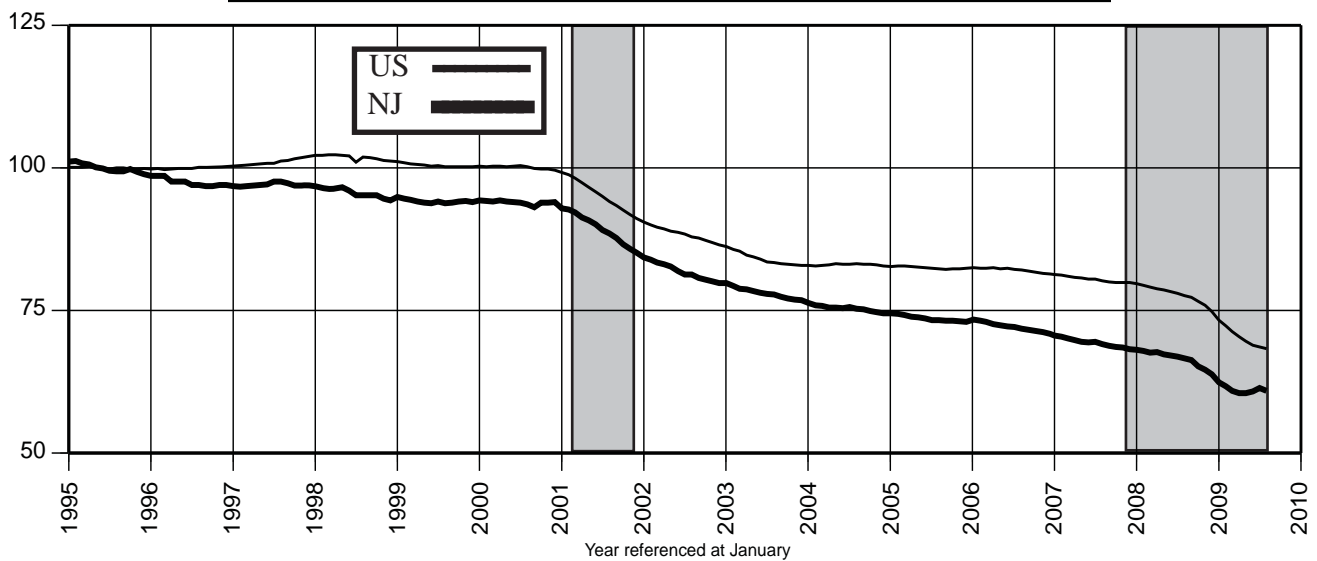
Nonfarm Payroll Employment (1995=100)



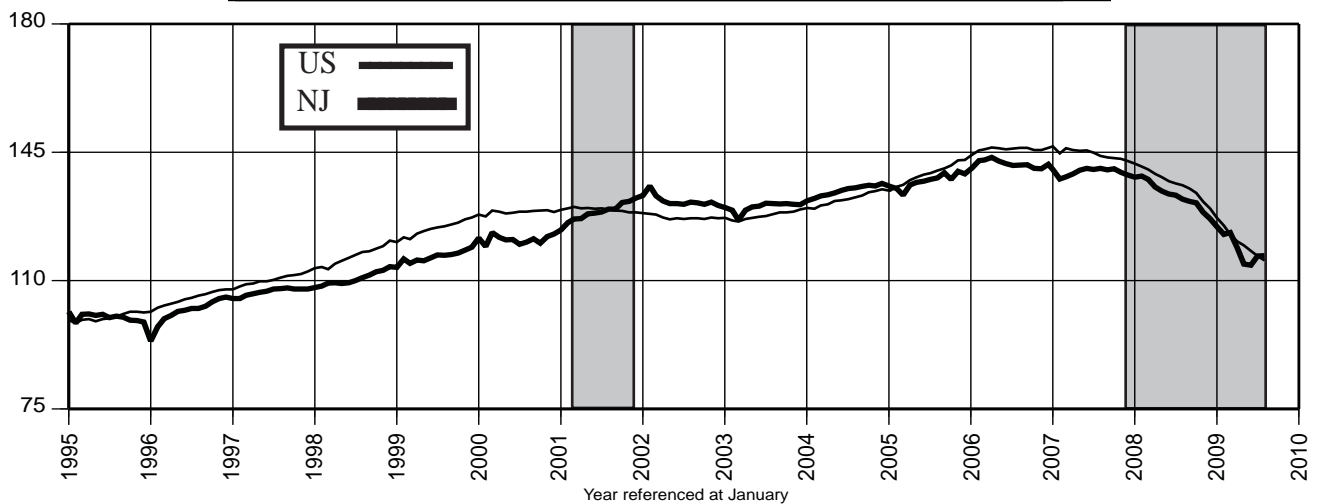
Private Sector Employment (1995=100)



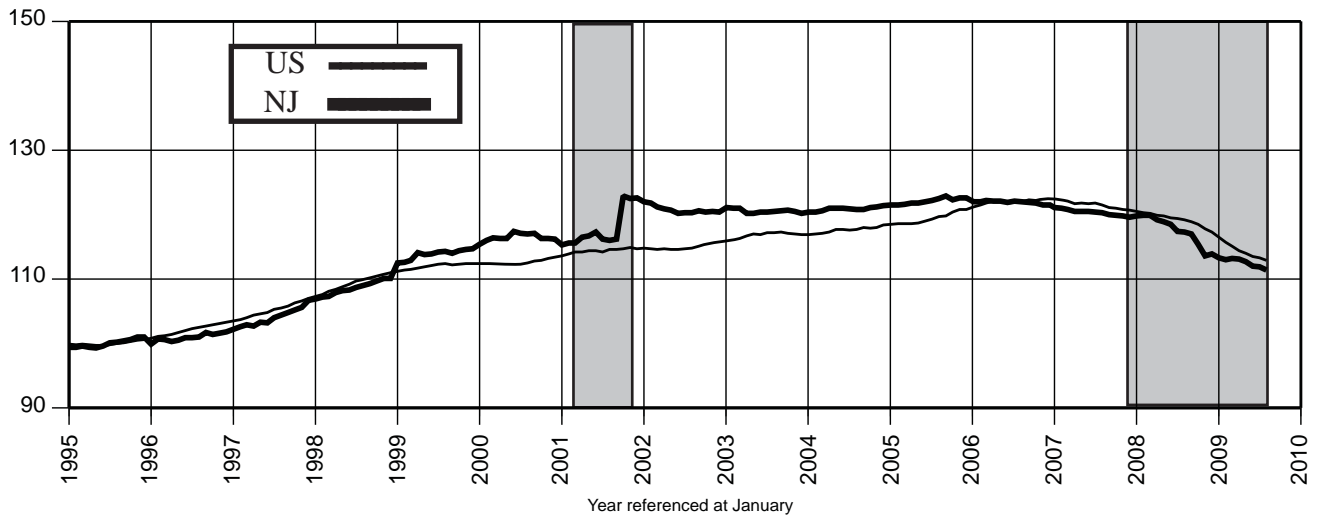
Manufacturing Employment (1995=100)



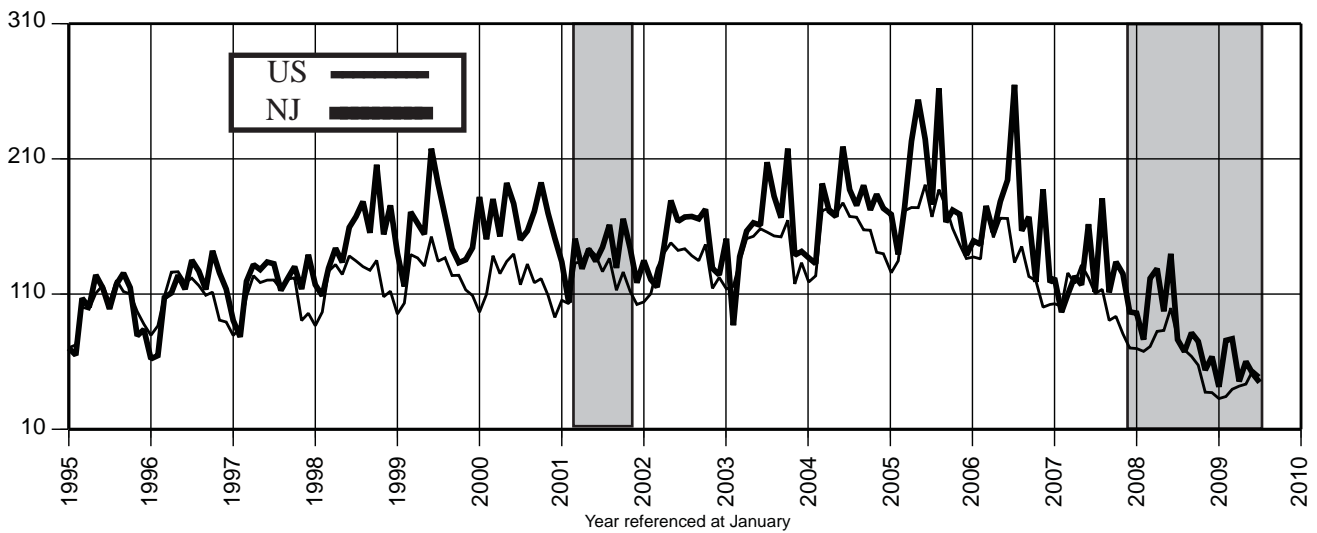
Construction Employment (1995=100)



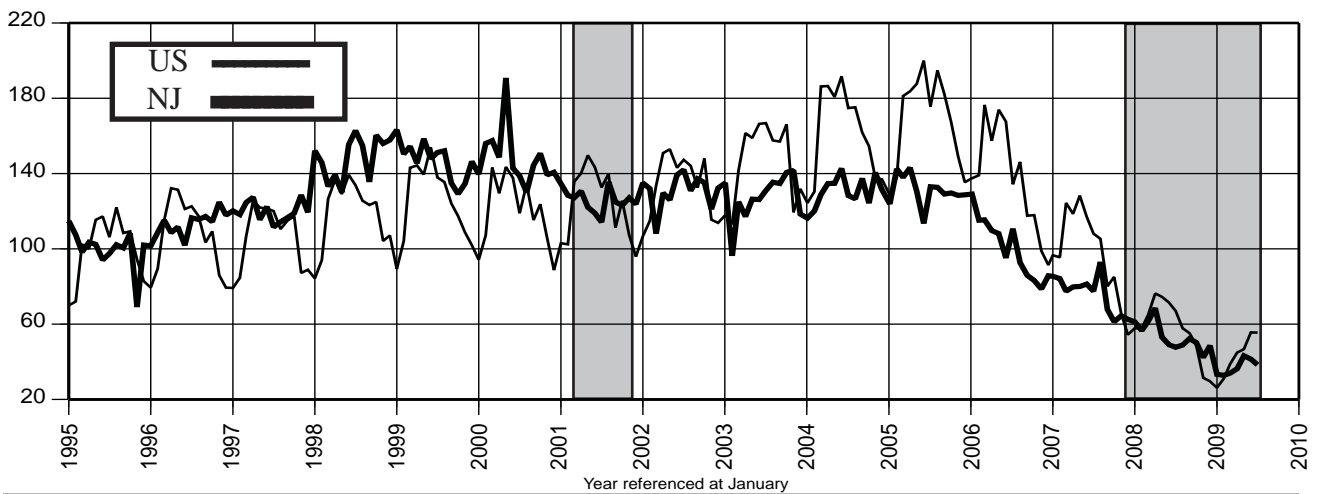
Financial Activities Employment (1995=100)



Total Dwelling Units Authorized (1995=100)-Unadj.



Single Family Dwelling Units Authorized (1995=100)-Unadj.



Northern Region

A BJ's Wholesale Club opened in North Bergen Township (Hudson County) during August with 150 employees.

Food Basics, a discount supermarket owned by A&P opened its second store in Paterson (Passaic County), creating 118 jobs.

HCL America has acquired a 35,000-sq.ft. data center in Parsippany-Troy Hills (Morris County). The company invested more than \$15 million to upgrade the facility and plans to hire more than 100 local workers.

Cardinal International, a glassware distributor moved 40 jobs from Wayne (Passaic County) to Millville (Cumberland County), NJ.

Southern Region

The first project in Glassboro's Rowan Boulevard redevelopment area, new student apartments at Rowan University, opened in September. The redevelopment area is located between the university's main campus and Glassboro's downtown area. Future projects for the area include a hotel and conference center, a Barnes & Noble bookstore and several smaller shops and restaurants.

The US Department of the Interior has awarded three energy leases to companies looking to build windmills off the coast of New Jersey. The leases allow the companies to construct meteorological towers that will help determine the best location for offshore wind farms. The state has promised each company \$4 million toward construction of the towers. New Jersey's Energy Master Plan calls for wind power to generate enough electricity to power 300,000 homes by 2013.

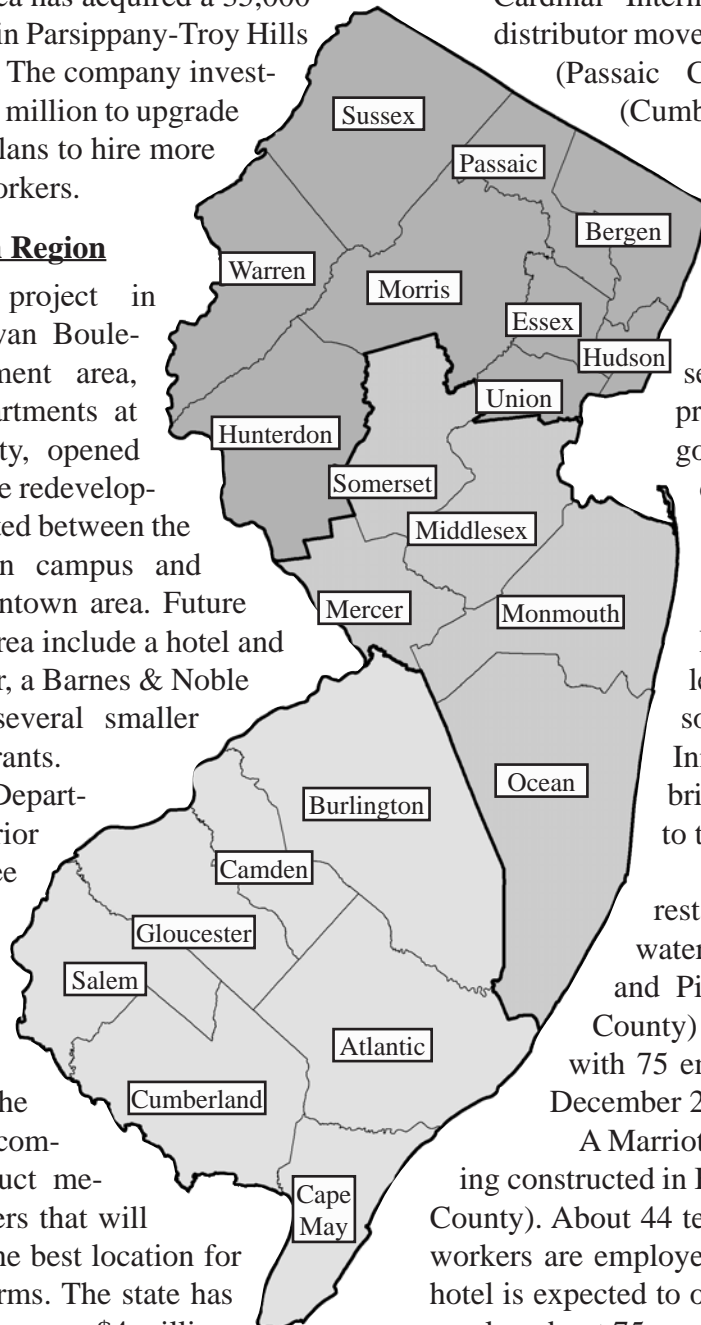
Central Region

In Peapack-Gladstone (Somerset County), Natirar, a project consisting of a golf course, social club, culinary school and hotel, is being developed at the former estate of the King of Morocco by a group led by Richard Branson of Virgin Airlines. Initially, the project will bring 75 restaurant jobs to the area this October.

Two Olive Garden restaurants - in Bridgewater (Somerset County) and Piscataway (Middlesex County) - are expected to open with 75 employees each during December 2009.

A Marriott Residence Inn is being constructed in Branchburg (Somerset County). About 44 temporary construction workers are employed by the project. The hotel is expected to open in May 2010 and employ about 75 workers.

The Cheesecake Factory plans to build a restaurant at the Bridgewater Commons shopping mall. The restaurant is expected to open in the spring of 2010 and employ about 60 workers.



Labor Area Focus (cont.)

Labor Area Nonfarm Payroll Employment

(not seasonally adjusted)

	2008					2009							
	Aug	Sep	Oct	Nov	Dec	Jan	Feb	Mar	Apr	May	Jun	Jul	Aug
Atlantic City Labor Area (Atlantic County)													
Total Nonfarm	150.6	149.8	147.5	146.4	144.7	141.9	139.7	140.3	139.6	141.1	143.9	147.0	147.4
Total Private Sector	129.0	127.6	125.0	123.8	122.8	119.8	117.5	118.0	118.1	119.7	122.6	125.2	124.9
Government	21.6	22.2	22.5	22.6	21.9	22.1	22.2	22.3	21.5	21.4	21.3	21.8	22.5
Bergen-Passaic Labor Area (Bergen & Passaic counties)													
Total Nonfarm	651.2	655.8	660.2	659.7	656.5	639.5	633.5	635.6	639.1	640.9	649.2	640.4	635.9
Total Private Sector	575.6	575.3	574.6	572.8	569.5	556.4	548.2	550.0	552.9	557.3	564.1	560.5	558.9
Government	75.6	80.5	85.6	86.9	87.0	83.1	85.3	85.6	86.2	83.6	85.1	79.9	77.0
Camden Labor Area (Burlington, Camden & Gloucester counties)													
Total Nonfarm	530.9	532.8	537.4	534.5	530.0	515.6	511.5	514.7	517.2	523.8	522.8	511.5	509.9
Total Private Sector	450.7	447.5	447.1	443.8	439.3	426.0	422.0	424.5	427.1	434.3	431.8	426.9	427.7
Government	80.2	85.3	90.3	90.7	90.7	89.6	89.5	90.2	90.1	89.5	91.0	84.6	82.2
Edison Labor Area (Middlesex, Monmouth, Ocean & Somerset counties)													
Total Nonfarm	1,040.9	1,029.2	1,034.6	1,030.2	1,020.6	979.4	979.7	985.1	990.8	1,002.1	1,025.8	1,032.1	1,028.2
Total Private Sector	901.0	885.4	884.0	878.6	869.8	832.1	830.1	834.7	840.3	850.6	875.2	890.0	891.2
Government	139.9	143.8	150.6	151.6	150.8	147.3	149.6	150.4	150.5	151.5	150.6	142.1	137.0
Jersey City Labor Area (Hudson County)													
Total Nonfarm	241.6	246.2	247.9	247.0	246.9	242.2	241.3	242.0	241.7	241.2	242.2	237.6	236.5
Total Private Sector	203.8	206.0	204.9	203.6	203.1	200.0	198.1	198.9	198.8	199.4	200.7	198.0	198.3
Government	37.8	40.2	43.0	43.4	43.8	42.2	43.2	43.1	42.9	41.8	41.7	39.6	38.2
Newark Labor Area (Essex, Hunterdon, Morris, Sussex & Union counties)													
Total Nonfarm	1,027.4	1,026.5	1,033.8	1,034.1	1,032.3	1,006.2	1,007.6	1,006.1	1,014.6	1,021.5	1,030.6	1,020.9	1,016.4
Total Private Sector	868.0	863.5	866.3	866.9	865.2	841.4	840.4	839.7	846.0	853.7	862.2	859.1	857.1
Government	159.4	163.0	167.5	167.2	167.1	164.8	167.2	166.4	168.6	167.8	168.4	161.8	159.3
Ocean City Labor Area (Cape May County)													
Total Nonfarm	55.2	48.4	39.9	38.4	37.8	33.0	32.9	33.5	36.5	42.2	49.1	51.8	52.6
Total Private Sector	45.9	38.3	30.7	29.4	28.9	23.8	23.7	24.3	27.2	32.4	39.0	42.3	43.0
Government	9.3	10.1	9.2	9.0	8.9	9.2	9.2	9.2	9.3	9.8	10.1	9.5	9.6
Salem Labor Area (Salem County)													
Total Nonfarm	21.7	22.6	23.0	22.4	22.5	22.1	22.2	22.4	22.8	22.9	23.5	23.6	23.0
Total Private Sector	18.2	17.9	18.1	17.5	17.6	17.3	17.4	17.5	17.9	18.0	18.7	19.0	18.5
Government	3.5	4.7	4.9	4.9	4.9	4.8	4.8	4.9	4.9	4.9	4.8	4.6	4.5
Trenton-Ewing Labor Area (Mercer County)													
Total Nonfarm	238.6	238.8	240.6	240.1	240.0	235.1	235.5	236.3	237.9	238.4	239.9	236.5	234.6
Total Private Sector	174.5	174.2	175.5	174.9	174.8	170.1	170.5	170.8	172.4	173.9	175.3	173.2	172.0
Government	64.1	64.6	65.1	65.2	65.2	65.0	65.0	65.5	65.5	64.5	64.6	63.3	62.6
Vineland-Millville-Bridgeton Labor Area (Cumberland County)													
Total Nonfarm	60.0	61.7	62.5	62.2	62.2	60.8	60.7	61.0	61.3	61.4	61.7	59.8	60.2
Total Private Sector	46.9	47.1	47.1	46.7	46.7	45.5	45.1	45.3	45.4	45.7	46.1	45.6	45.8
Government	13.1	14.6	15.4	15.5	15.5	15.3	15.6	15.7	15.9	15.7	15.6	14.2	14.4
Warren Labor Area (Warren County)													
Total Nonfarm	36.9	38.7	38.4	39.1	38.6	37.4	37.6	37.9	38.2	38.6	37.9	37.5	36.9
Total Private Sector	32.4	32.4	33.3	34.0	33.3	31.5	31.4	31.7	31.9	32.2	31.8	31.4	30.9
Government	3.7	5.5	5.6	5.6	5.8	5.9	6.2	6.2	6.3	6.4	6.1	6.1	6.0

Estimates for the Ocean City, Salem and Warren Labor Areas are independently estimated by the New Jersey Department of Labor and Workforce Development.

Labor Area Focus (cont.)**Labor Area Civilian Labor Force**

(seasonally adjusted)

	2008					2009							
	Aug	Sep	Oct	Nov	Dec	Jan	Feb	Mar	Apr	May	Jun	Jul	Aug
Atlantic City Labor Area (Atlantic County)													
Labor Force	135.3	135.6	136.1	136.6	136.6	136.6	135.8	137.0	137.3	137.0	136.4	137.0	139.1
Employment	125.3	125.3	124.9	124.7	124.0	124.2	121.8	122.3	121.7	120.7	119.4	121.1	120.9
Unemployment Volume	10.0	10.2	11.1	11.9	12.6	12.4	14.0	14.7	15.6	16.3	17.0	15.9	18.2
Unemployment Rate (%)	7.4	7.6	8.2	8.7	9.2	9.1	10.3	10.7	11.4	11.9	12.5	11.6	13.1
Bergen-Passaic Labor Area (Bergen & Passaic Counties)													
Labor Force	719.0	718.2	718.1	715.6	718.1	721.3	722.7	728.2	733.6	731.3	731.6	731.7	727.6
Employment	679.8	678.6	676.5	673.0	669.6	670.3	664.4	668.6	672.8	667.9	664.4	665.5	658.8
Unemployment Volume	39.3	39.6	41.6	42.6	48.6	51.0	58.3	559.6	60.8	63.4	67.2	66.2	68.8
Unemployment Rate (%)	5.5	5.5	5.8	6.0	6.8	7.1	8.1	8.2	8.3	8.7	9.2	9.0	9.5
Camden Labor Area (Burlington, Camden & Gloucester Counties)													
Labor Force	661.8	662.3	663.8	661.0	662.0	659.2	657.6	663.8	668.9	672.3	663.9	658.8	660.3
Employment	623.3	622.7	621.1	616.8	613.4	611.4	604.2	607.7	610.2	611.0	601.2	599.1	593.8
Unemployment Volume	38.6	39.5	42.8	44.2	48.7	47.8	53.4	56.1	58.7	61.3	62.7	59.7	66.5
Unemployment Rate (%)	5.8	6.0	6.4	6.7	7.3	7.3	8.1	8.5	8.8	9.1	9.4	9.1	10.1
Edison Labor Area (Middlesex, Monmouth, Somerset & Ocean Counties)													
Labor Force	1,201.2	1,199.1	1,200.0	1,195.3	1,202.1	1,192.7	1,198.9	1,204.8	1,210.4	1,209.5	1,212.7	1,225.1	1,218.8
Employment	1,137.9	1,134.9	1,133.6	1,127.0	1,122.3	1,109.3	1,104.5	1,108.9	1,113.2	1,108.7	1,107.1	1,120.6	1,110.3
Unemployment Volume	63.3	64.2	66.4	68.2	79.8	83.4	94.4	95.9	97.2	100.8	105.6	104.5	108.5
Unemployment Rate (%)	5.3	5.4	5.5	5.7	6.6	7.0	7.9	8.0	8.0	8.3	8.7	8.5	8.9
Jersey City Labor Area (Hudson County)													
Labor Force	295.7	295.4	295.9	295.3	296.3	296.3	297.3	299.9	302.9	302.0	301.3	300.9	301.9
Employment	275.8	275.3	274.3	273.1	271.4	272.3	269.6	271.3	273.1	271.1	269.6	270.1	267.4
Unemployment Volume	19.9	20.2	21.5	22.2	24.9	24.0	27.7	28.6	29.8	30.9	31.7	30.8	34.5
Unemployment Rate (%)	6.7	6.8	7.3	7.5	8.4	8.1	9.3	9.5	9.8	10.2	10.5	10.2	11.4
Newark-Union Labor Area (Essex, Hunterdon, Morris, Sussex & Union Counties)													
Labor Force	1,072.2	1,070.7	1,071.2	1,069.2	1,073.3	1,073.0	1,078.5	1,083.0	1,092.3	1,092.1	1,091.4	1,094.7	1,089.8
Employment	1,012.0	1,009.4	1,006.4	1,002.6	999.5	996.7	992.5	995.6	1,004.3	999.7	993.8	997.1	988.2
Unemployment Volume	60.3	61.3	64.9	66.7	73.8	76.3	86.0	87.4	88.0	92.4	97.6	97.6	101.6
Unemployment Rate (%)	5.6	5.7	6.1	6.2	6.9	7.1	8.0	8.1	8.1	8.5	8.9	8.9	9.3
Ocean City Labor Area (Cape May County)													
Labor Force	57.4	58.1	58.9	59.5	59.8	56.8	56.8	57.0	56.5	57.7	55.6	54.4	56.9
Employment	52.5	53.0	53.4	54.0	54.2	51.5	51.0	51.1	50.4	51.4	48.6	47.7	49.3
Unemployment Volume	4.9	5.1	5.5	5.5	5.6	5.3	5.8	5.9	6.1	6.3	7.0	6.7	7.6
Unemployment Rate (%)	8.5	8.7	9.3	9.2	9.3	9.3	10.2	10.4	10.8	10.9	12.6	12.3	13.4
Salem Labor Area (Salem County)													
Labor Force	31.8	31.6	31.8	31.5	31.6	31.8	31.8	31.9	32.0	32.4	31.8	31.6	31.5
Employment	29.6	29.6	29.4	29.1	29.1	29.1	28.8	28.7	28.9	28.7	28.2	28.3	27.9
Unemployment Volume	2.2	2.0	2.4	2.4	2.6	2.7	3.0	3.2	3.1	3.7	3.6	3.3	3.6
Unemployment Rate (%)	6.8	6.4	7.5	7.7	8.1	8.5	9.4	10.0	9.7	11.4	11.3	10.4	11.4
Trenton-Ewing Labor Area (Mercer County)													
Labor Force	199.8	199.9	199.8	199.5	201.3	199.8	200.6	202.3	203.8	202.7	201.7	201.5	200.9
Employment	189.6	189.6	189.0	188.5	188.4	187.3	186.4	187.6	188.6	187.0	186.0	186.5	184.3
Unemployment Volume	10.2	10.3	10.8	11.0	13.0	12.5	14.2	14.7	15.2	15.7	15.7	15.0	16.5
Unemployment Rate (%)	5.1	5.2	5.4	5.5	6.5	6.3	7.1	7.3	7.5	7.7	7.8	7.4	8.2
Vineland-Millville-Bridgeton Labor Area (Cumberland County)													
Labor Force	69.3	70.0	70.2	70.1	70.3	69.7	70.1	70.3	71.2	71.3	71.0	71.0	71.9
Employment	63.4	63.9	63.5	63.3	63.1	62.8	62.4	62.5	62.8	62.5	61.8	62.3	62.2
Unemployment Volume	5.9	6.1	6.7	6.8	7.2	6.9	7.74	7.8	8.4	8.8	9.2	8.7	9.7
Unemployment Rate (%)	8.5	8.7	9.5	9.7	10.2	9.9	11.0	11.1	11.8	12.3	13.0	12.3	13.5

NEW JERSEY
ECONOMIC INDICATORS

NEW JERSEY
ECONOMIC INDICATORS

NEW
ECO

**Statistical Section
and
Notes**

INDICATORS

INDICATORS

NEW JERSEY
ECONOMIC INDICATORS

NEW JERSEY
ECONOMIC INDICATORS

NEW JERSEY
ECONOMIC INDICATORS

NEW JERSEY
ECONOMIC INDICATORS

NEW JERSEY
ECONOMIC INDICATORS

1. Civilian Labor Force (000)

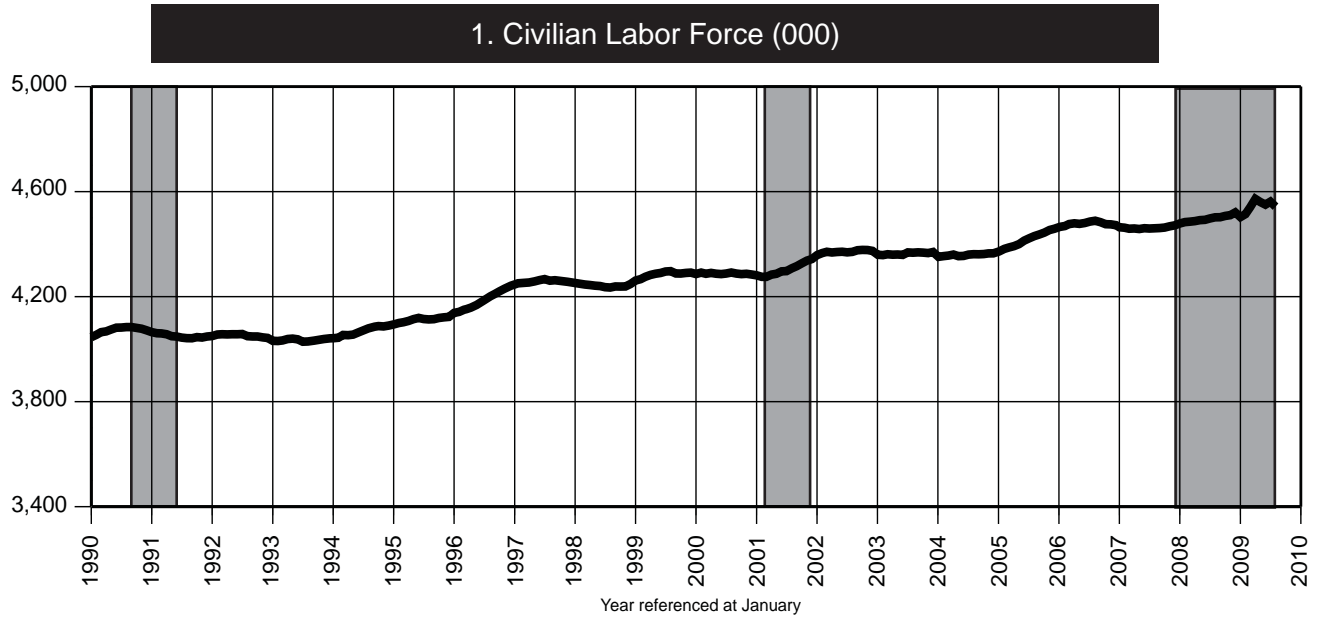
Date	2006		2007		2008		2009	
	Unadj.	Adj.	Unadj.	Adj.	Unadj.	Adj.	Unadj.	Adj.
Jan	4,430.6	4,465.6	4,444.3	4,464.4	4,466.3	4,478.7	4,476.1	4,503.0
Feb	4,453.5	4,469.0	4,445.0	4,462.6	4,467.1	4,483.9	4,494.3	4,514.6
Mar	4,459.3	4,476.4	4,449.8	4,458.7	4,479.7	4,485.5	4,528.0	4,540.6
Apr	4,455.4	4,479.3	4,430.2	4,459.6	4,470.3	4,487.7	4,545.5	4,572.4
May	4,463.0	4,477.2	4,436.2	4,457.6	4,481.9	4,491.3	4,547.3	4,560.4
Jun	4,520.9	4,480.5	4,498.0	4,460.6	4,536.8	4,492.6	4,598.1	4,550.5
Jul	4,547.7	4,485.9	4,524.0	4,459.4	4,562.9	4,497.8	4,638.8R	4,561.8R
Aug	4,516.3	4,489.1	4,475.5	4,460.3	4,527.7	4,502.1	4,579.2	4,542.7
Sep	4,451.3	4,483.6	4,441.4	4,461.2	4,473.5	4,502.5		
Oct	4,470.3	4,476.0	4,450.1	4,463.1	4,495.1	4,507.4		
Nov	4,479.8	4,475.3	4,476.5	4,467.9	4,493.9	4,510.4		
Dec	4,481.8	4,472.1	4,476.0	4,471.5	4,505.6	4,520.8		

2. Resident Employment (000)

Date	2006		2007		2008		2009	
	Unadj.	Adj.	Unadj.	Adj.	Unadj.	Adj.	Unadj.	Adj.
Jan	4,205.4	4,252.3	4,231.9	4,277.0	4,234.9	4,272.3	4,121.1	4,172.5
Feb	4,219.3	4,257.5	4,238.9	4,274.1	4,238.7	4,272.1	4,100.7	4,144.6
Mar	4,238.2	4,265.9	4,255.7	4,269.4	4,253.2	4,268.9	4,137.2	4,163.8
Apr	4,244.5	4,265.0	4,251.4	4,269.6	4,268.4	4,265.5	4,170.6	4,188.0
May	4,254.6	4,265.5	4,258.5	4,271.4	4,258.9	4,261.2	4,154.1	4,160.3
Jun	4,305.6	4,269.1	4,308.2	4,274.2	4,302.0	4,256.9	4,174.9	4,130.9
Jul	4,306.6	4,273.6	4,307.6	4,270.1	4,296.2	4,252.6	4,193.1R	4,138.6R
Aug	4,306.9	4,276.2	4,292.4	4,270.8	4,275.0	4,247.3	4,145.5	4,104.0
Sep	4,254.5	4,274.6	4,258.8	4,269.7	4,224.1	4,241.9		
Oct	4,294.7	4,276.5	4,276.0	4,270.8	4,240.5	4,235.6		
Nov	4,297.8	4,278.4	4,296.5	4,270.9	4,223.4	4,224.9		
Dec	4,307.6	4,281.1	4,283.7	4,271.7	4,199.0	4,215.1		

3. Unemployment (000)

Date	2006		2007		2008		2009	
	Unadj.	Adj.	Unadj.	Adj.	Unadj.	Adj.	Unadj.	Adj.
Jan	225.2	213.3	212.4	187.4	231.4	206.4	355.0	330.5
Feb	234.2	211.5	206.0	188.5	228.4	211.8	393.6	370.0
Mar	221.1	210.4	194.1	189.3	226.5	216.6	390.8	376.8
Apr	210.9	214.3	178.8	189.9	201.9	222.2	374.9	383.6
May	208.4	211.6	177.8	186.2	223.0	230.1	393.2	400.0
Jun	215.3	211.4	189.7	186.5	234.8	235.7	423.2	419.6
Jul	241.1	212.3	216.4	189.3	266.7	245.2	445.6R	423.1R
Aug	209.4	212.8	183.1	189.5	252.6	254.8	433.7	438.7
Sep	196.8	209.0	182.6	191.5	249.4	260.6		
Oct	175.6	199.5	174.1	192.2	254.5	271.8		
Nov	182.0	197.0	180.0	197.0	270.5	285.5		
Dec	174.2	191.0	192.2	199.8	306.6	305.7		



4. Labor Force Participation Rate (%)

Date	2006		2007		2008		2009	
	Unadj.	Adj.	Unadj.	Adj.	Unadj.	Adj.	Unadj.	Adj.
Jan	66.3	66.9	66.3	66.6	66.3	66.5	66.0	66.4
Feb	66.7	66.9	66.3	66.5	66.3	66.5	66.2	66.5
Mar	66.7	67.0	66.3	66.5	66.4	66.5	66.7	66.9
Apr	66.7	67.0	66.0	66.4	66.3	66.5	66.9	67.3
May	66.8	67.0	66.1	66.4	66.4	66.6	66.9	67.1
Jun	67.6	67.0	67.0	66.4	67.2	66.5	67.6	66.9
Jul	68.0	67.1	67.3	66.4	67.6	66.6	68.2	67.1
Aug	67.5	67.1	66.6	66.3	67.0	66.6	67.3	66.7
Sep	66.5	67.0	66.0	66.3	66.1	66.6		
Oct	66.7	66.8	66.1	66.3	66.4	66.6		
Nov	66.9	66.8	66.5	66.4	66.3	66.6		
Dec	66.9	66.7	66.4	66.4	66.5	66.7		

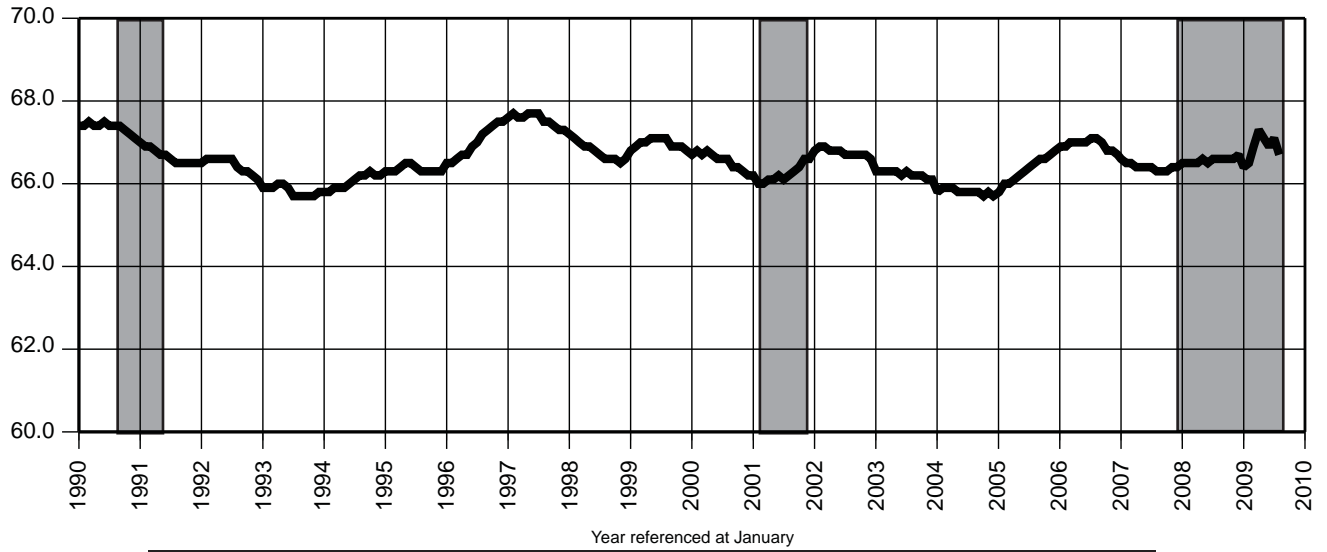
5. Employment / Population Ratio (%)

Date	2006		2007		2008		2009	
	Unadj.	Adj.	Unadj.	Adj.	Unadj.	Adj.	Unadj.	Adj.
Jan	63.0	63.7	63.1	63.8	62.8	63.4	60.8	61.5
Feb	63.2	63.7	63.2	63.7	62.9	63.4	60.4	61.1
Mar	63.4	63.8	63.4	63.6	63.1	63.3	60.9	61.3
Apr	63.5	63.8	63.3	63.6	63.3	63.2	61.4	61.7
May	63.7	63.8	63.4	63.6	63.1	63.1	61.1	61.2
Jun	64.4	63.9	64.1	63.6	63.7	63.1	61.4	60.8
Jul	64.4	63.9	64.1	63.6	63.6	63.0	61.6R	60.8R
Aug	64.4	63.9	63.9	63.5	63.2	62.8	60.9	60.3
Sep	63.5	63.8	63.3	63.5	62.4	62.7		
Oct	64.1	63.8	63.5	63.5	62.6	62.6		
Nov	64.1	63.8	63.8	63.4	62.3	62.4		
Dec	64.3	63.9	63.6	63.4	61.9	62.2		

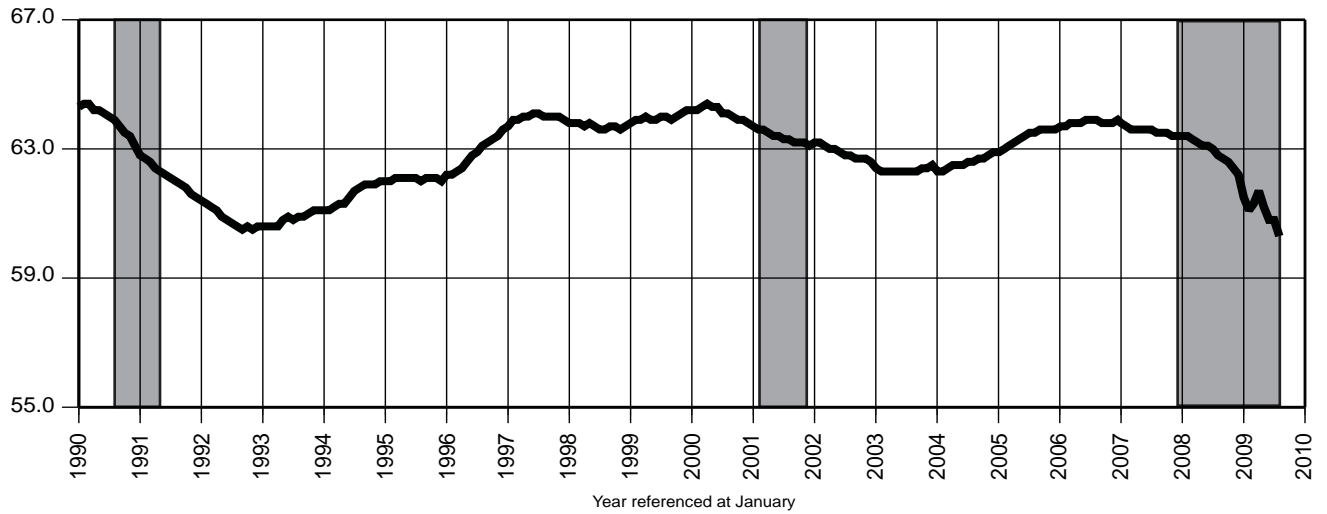
6. Unemployment Rate (%)

Date	2006		2007		2008		2009	
	Unadj.	Adj.	Unadj.	Adj.	Unadj.	Adj.	Unadj.	Adj.
Jan	5.1	4.8	4.8	4.2	5.2	4.6	7.9	7.3
Feb	5.3	4.7	4.6	4.2	5.1	4.7	8.8	8.2
Mar	5.0	4.7	4.4	4.2	5.1	4.8	8.6	8.3
Apr	4.7	4.8	4.0	4.3	4.5	5.0	8.2	8.4
May	4.7	4.7	4.0	4.2	5.0	5.1	8.6	8.8
Jun	4.8	4.7	4.2	4.2	5.2	5.2	9.2	9.2
Jul	5.3	4.7	4.8	4.2	5.8	5.5	9.6	9.3
Aug	4.6	4.7	4.1	4.2	5.6	5.7	9.5	9.7
Sep	4.4	4.7	4.1	4.3	5.6	5.8		
Oct	3.9	4.5	3.9	4.3	5.7	6.0		
Nov	4.1	4.4	4.0	4.4	6.0	6.3		
Dec	3.9	4.3	4.3	4.5	6.8	6.8		

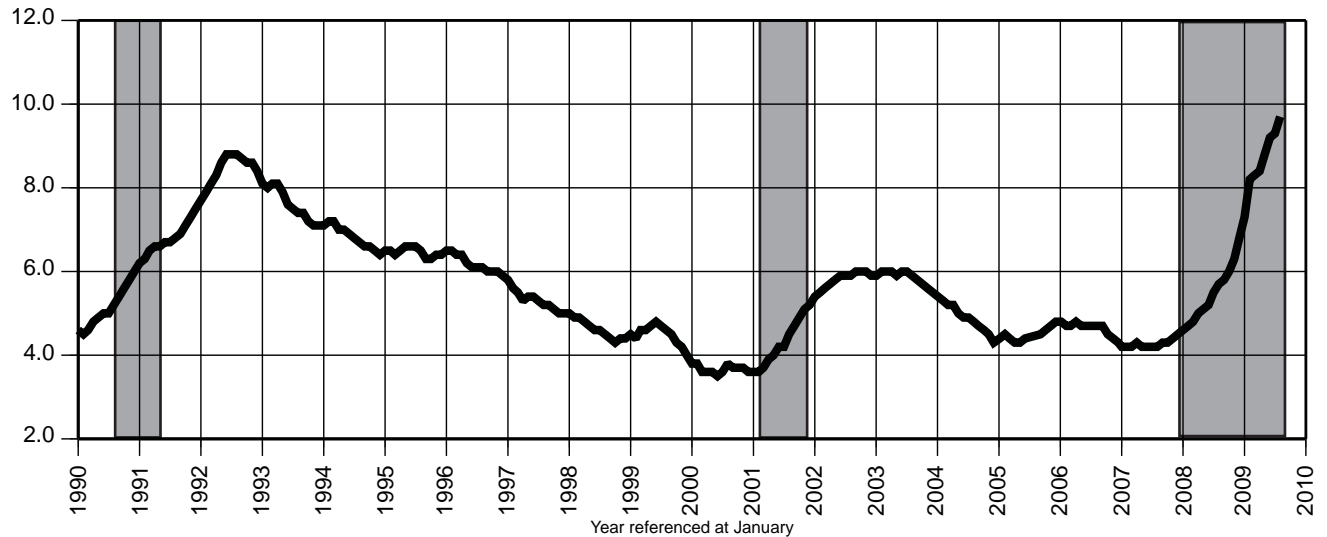
4. Labor Force Participation Rate (%)



5. Employment / Population Ratio (%)



6. Unemployment Rate (%)



7. Nonfarm Payroll Employment (000)

Date	2006		2007		2008		2009	
	Unadj.	Adj.	Unadj.	Adj.	Unadj.	Adj.	Unadj.	Adj.
Jan	3,984.6	4,059.9	3,997.0	4,071.6	4,016.3	4,091.0	3,916.5	3,987.8
Feb	3,992.5	4,065.8	3,993.2	4,065.7	4,017.0	4,089.8	3,899.0	3,973.3
Mar	4,028.4	4,072.5	4,024.6	4,068.2	4,042.7	4,086.4	3,913.1	3,960.0
Apr	4,050.8	4,065.6	4,053.9	4,068.6	4,064.9	4,080.1	3,925.6	3,941.3
May	4,090.9	4,068.7	4,103.9	4,081.0	4,093.8	4,070.2	3,952.0	3,933.3
Jun	4,143.4	4,072.5	4,159.6	4,086.5	4,140.3	4,066.2	3,992.9	3,930.2
Jul	4,091.5	4,069.2	4,101.8	4,078.8	4,081.3	4,058.3	3,954.7R	3,929.7R
Aug	4,076.5	4,074.8	4,086.0	4,084.5	4,052.3	4,051.1	3,933.5	3,930.5
Sep	4,075.3	4,075.1	4,076.5	4,078.9	4,042.9	4,046.6		
Oct	4,088.1	4,074.2	4,103.4	4,090.5	4,059.4	4,037.4		
Nov	4,107.4	4,075.3	4,118.8	4,087.4	4,052.3	4,014.6		
Dec	4,122.3	4,079.6	4,128.4	4,086.2	4,036.2	4,000.5		

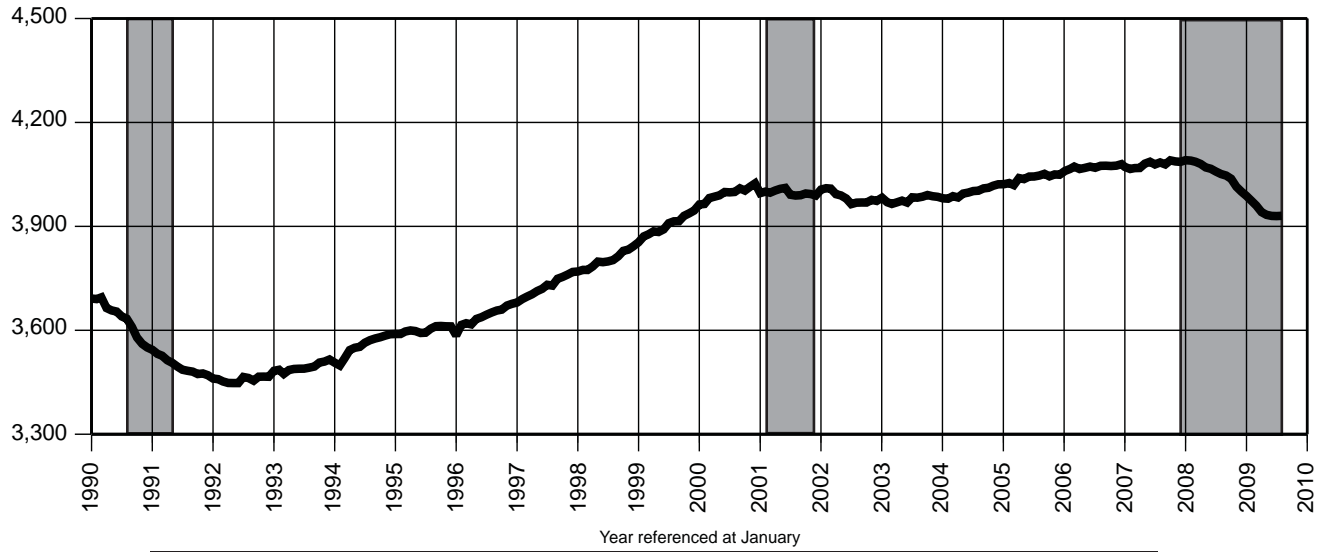
8. Private Sector Payroll Employment (000)

Date	2006		2007		2008		2009	
	Unadj.	Adj.	Unadj.	Adj.	Unadj.	Adj.	Unadj.	Adj.
Jan	3,340.7	3,413.6	3,351.8	3,424.0	3,368.9	3,441.2	3,265.8	3,335.8
Feb	3,336.1	3,418.2	3,336.6	3,418.0	3,358.3	3,440.0	3,239.6	3,322.8
Mar	3,370.0	3,425.4	3,364.8	3,419.7	3,381.6	3,436.7	3,251.4	3,309.1
Apr	3,392.0	3,418.0	3,394.6	3,420.4	3,404.2	3,430.4	3,261.9	3,289.2
May	3,435.5	3,421.5	3,446.0	3,431.5	3,434.8	3,419.8	3,291.5	3,282.0
Jun	3,486.1	3,425.3	3,499.1	3,436.7	3,478.1	3,414.9	3,332.5	3,279.8
Jul	3,469.4	3,422.3	3,485.3	3,437.7	3,453.8	3,406.5	3,335.2R	3,285.4R
Aug	3,465.5	3,426.7	3,476.3	3,437.5	3,440.1	3,401.4	3,329.5	3,288.3
Sep	3,445.1	3,429.3	3,446.7	3,432.9	3,409.3	3,396.5		
Oct	3,433.0	3,425.7	3,447.8	3,441.4	3,396.9	3,382.9		
Nov	3,447.6	3,427.4	3,457.9	3,438.4	3,387.2	3,361.5		
Dec	3,462.8	3,431.5	3,467.6	3,436.8	3,372.3	3,348.1		

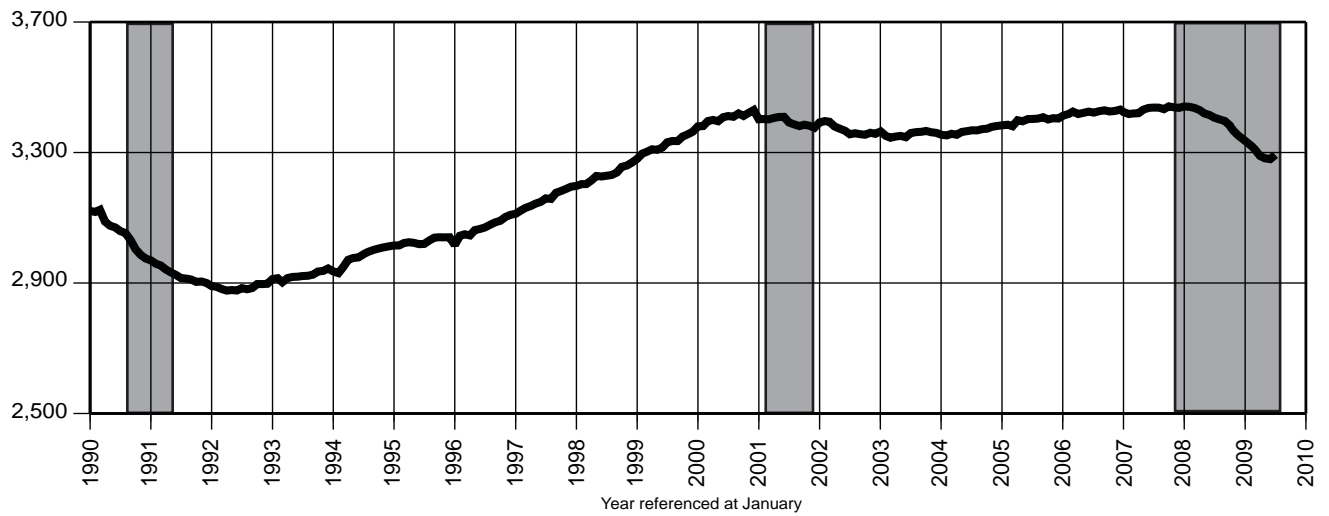
9. Construction Payroll Employment (000)

Date	2006		2007		2008		2009	
	Unadj.	Adj.	Unadj.	Adj.	Unadj.	Adj.	Unadj.	Adj.
Jan	161.5	173.6	161.2	173.1	158.7	170.5	143.5	153.8
Feb	161.2	176.0	155.4	169.9	156.7	170.9	136.9	151.2
Mar	166.5	176.3	160.7	170.6	160.1	169.8	141.2	151.9
Apr	175.4	177.1	169.9	171.6	165.3	167.2	144.0	146.8
May	178.8	175.9	175.7	172.8	168.6	165.8	143.3	141.3
Jun	180.9	175.0	179.5	173.5	170.7	164.8	146.1	140.9
Jul	181.0	174.4	179.6	173.1	171.0	164.4	150.6R	144.0R
Aug	182.2	174.5	181.0	173.4	170.6	163.1	151.9	144.1
Sep	181.1	174.7	179.1	173.0	168.3	162.3		
Oct	178.3	173.5	178.1	173.3	167.1	161.8		
Nov	176.7	173.3	175.5	172.1	162.2	158.7		
Dec	175.2	174.8	171.5	171.2	157.8	156.6		

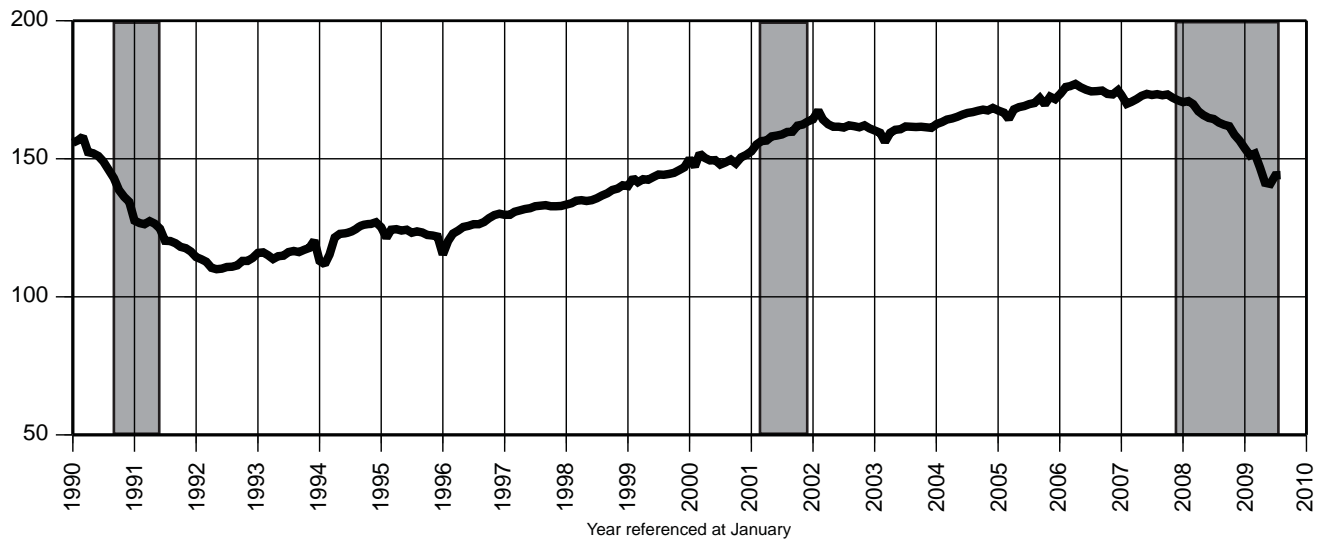
7. Nonfarm Payroll Employment (000)



8. Private Sector Payroll Employment (000)



9. Construction Payroll Employment (000)



You're viewing an archived copy from the New Jersey State Library.
Indicator Series 10-12 Establishment Employment

10. Total Manufacturing Payroll Employment (000)

Date	2006		2007		2008		2009	
	Unadj.	Adj.	Unadj.	Adj.	Unadj.	Adj.	Unadj.	Adj.
Jan	326.4	329.3	314.5	317.0	303.4	305.7	277.6	280.1
Feb	325.9	328.3	313.5	315.8	302.1	304.5	274.7	276.9
Mar	326.6	327.4	313.5	314.4	302.6	303.5	272.3	273.2
Apr	324.7	325.8	312.3	313.3	302.9	303.8	270.7	271.4
May	325.3	325.1	312.2	312.0	302.2	301.9	271.1	271.4
Jun	326.5	324.1	313.5	311.3	303.5	301.3	274.6	272.8
Jul	323.7	323.6	312.1	311.8	300.3	300.0	275.6R	275.5R
Aug	323.1	322.3	310.9	310.1	299.7	298.8	273.5	273.1
Sep	322.5	321.4	309.5	308.6	298.5	297.6		
Oct	321.1	320.6	308.6	308.0	293.4	292.5		
Nov	320.3	319.5	308.0	307.2	291.3	290.1		
Dec	319.1	318.1	306.9	306.2	287.2	286.2		

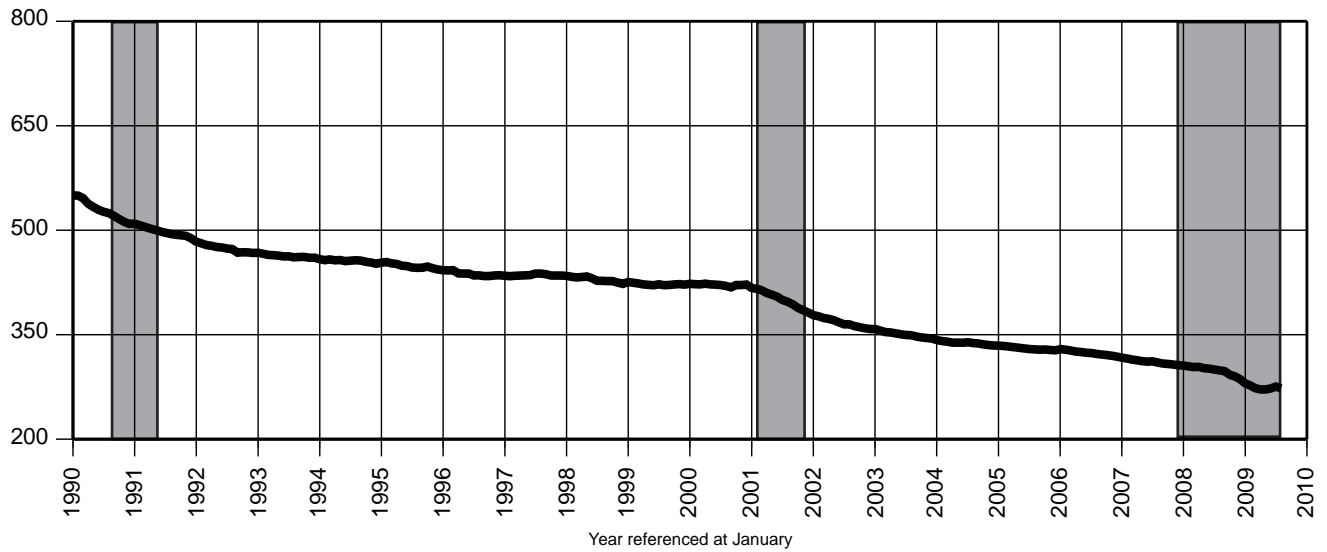
11. Trade, Transportation & Utilities Payroll Employment (000)

Date	2006		2007		2008		2009	
	Unadj.	Adj.	Unadj.	Adj.	Unadj.	Adj.	Unadj.	Adj.
Jan	870.9	875.4	870.2	874.5	870.5	874.5	843.9	851.3
Feb	858.6	874.3	856.7	872.7	856.8	872.8	836.3	853.5
Mar	863.1	875.8	859.5	872.0	859.5	872.1	837.8	851.7
Apr	862.4	874.0	860.2	872.0	857.9	869.8	835.6	847.7
May	871.8	874.1	873.0	875.3	865.6	867.9	840.8	843.9
Jun	880.5	873.5	884.4	877.3	874.0	866.8	849.1	843.7
Jul	871.5	873.9	873.8	876.1	863.2	865.4	835.5R	836.6R
Aug	868.9	874.2	869.8	875.1	859.4	864.7	836.1	839.7
Sep	870.8	874.3	870.7	874.7	859.2	863.3		
Oct	877.4	875.6	875.5	874.0	858.4	855.2		
Nov	894.0	876.3	892.4	874.7	870.4	848.6		
Dec	908.8	876.9	907.2	875.0	872.6	844.0		

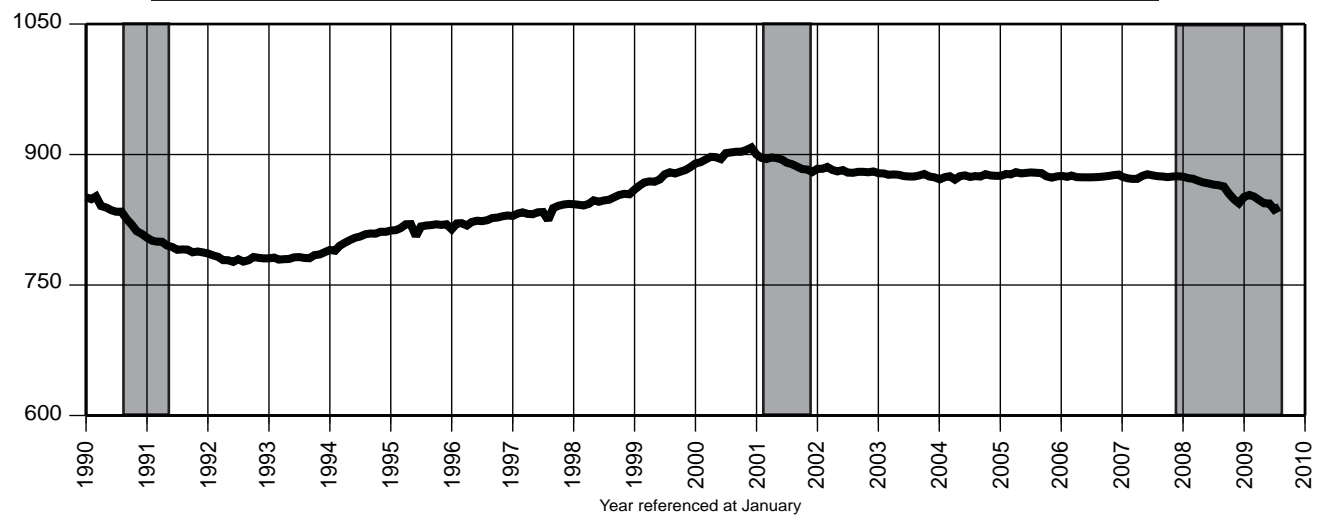
12. Information Payroll Employment (000)

Date	2006		2007		2008		2009	
	Unadj.	Adj.	Unadj.	Adj.	Unadj.	Adj.	Unadj.	Adj.
Jan	97.4	97.9	96.3	96.8	93.7	94.2	90.0	90.4
Feb	98.1	98.2	97.1	97.1	94.2	94.1	89.0	89.8
Mar	98.2	97.8	97.5	97.1	94.2	93.8	88.8	88.9
Apr	97.0	97.5	96.7	97.1	93.1	93.5	89.6	90.1
May	97.4	97.6	96.5	96.7	92.7	92.9	88.6	88.8
Jun	98.3	97.7	96.7	96.0	93.4	92.7	88.1	87.7
Jul	97.6	97.4	96.5	96.3	92.1	92.0	88.7	88.6
Aug	98.0	97.7	97.2	96.9	92.1	91.8	89.9	89.5
Sep	97.8	98.3	95.4	95.8	91.2	91.5		
Oct	96.3	96.9	94.0	94.6	90.8	90.7		
Nov	96.1	96.0	94.3	94.3	90.7	90.2		
Dec	96.4	95.8	93.9	93.4	90.7	90.1		

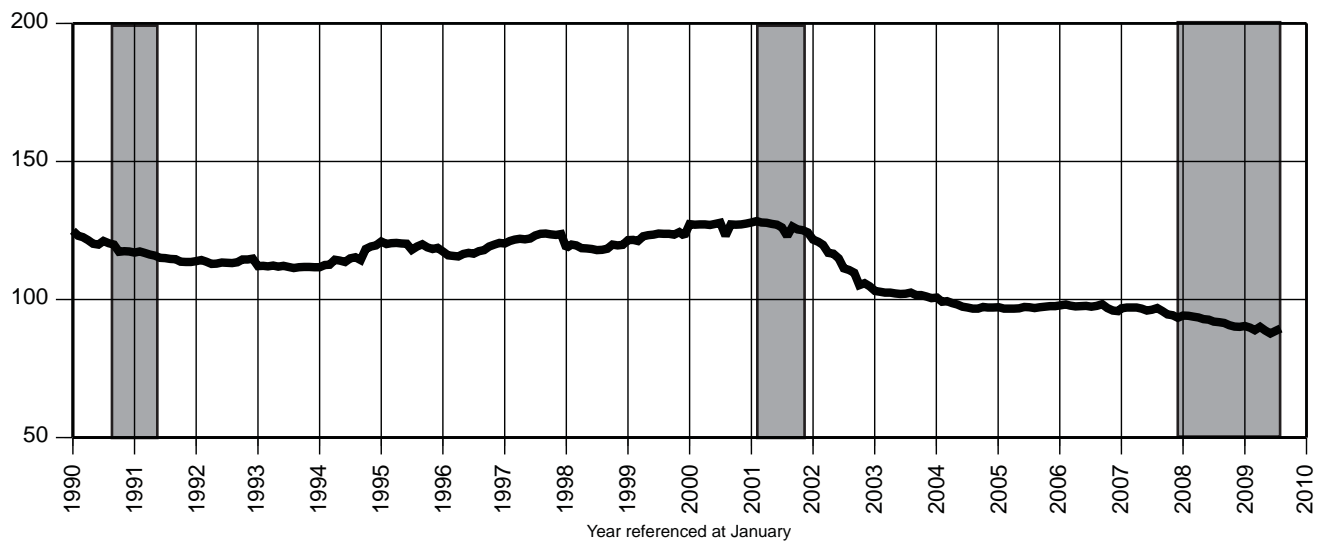
10. Total Manufacturing Payroll Employment (000)



11. Trade, Transportation & Utilities Payroll Employment (000)



12. Information Payroll Employment (000)



You're viewing an archived copy from the New Jersey State Library.
Indicator Series 13-15 Establishment Employment

13. Financial Activities Payroll Employment (000)

Date	2006		2007		2008		2009	
	Unadj.	Adj.	Unadj.	Adj.	Unadj.	Adj.	Unadj.	Adj.
Jan	276.8	279.4	274.9	277.5	272.0	274.5	257.9	259.6
Feb	276.5	279.5	274.3	277.2	271.9	274.6	256.6	258.8
Mar	277.3	279.9	274.3	276.7	272.3	274.6	257.5	259.2
Apr	278.3	279.7	274.8	276.1	271.8	273.1	257.7	259.0
May	279.6	279.7	276.1	276.1	272.5	272.3	258.1	258.2
Jun	281.9	279.3	278.7	276.0	274.2	271.4	259.1	256.6
Jul	283.6	279.6	279.9	275.9	272.8	268.8	259.1R	256.4R
Aug	283.0	279.4	279.0	275.5	272.1	268.7	258.0	255.2
Sep	279.1	279.2	274.7	274.9	267.7	268.0		
Oct	278.4	279.0	274.0	274.7	264.0	264.4		
Nov	278.1	278.3	274.0	274.4	259.7	260.1		
Dec	278.3	278.3	273.9	273.9	260.8	260.8		

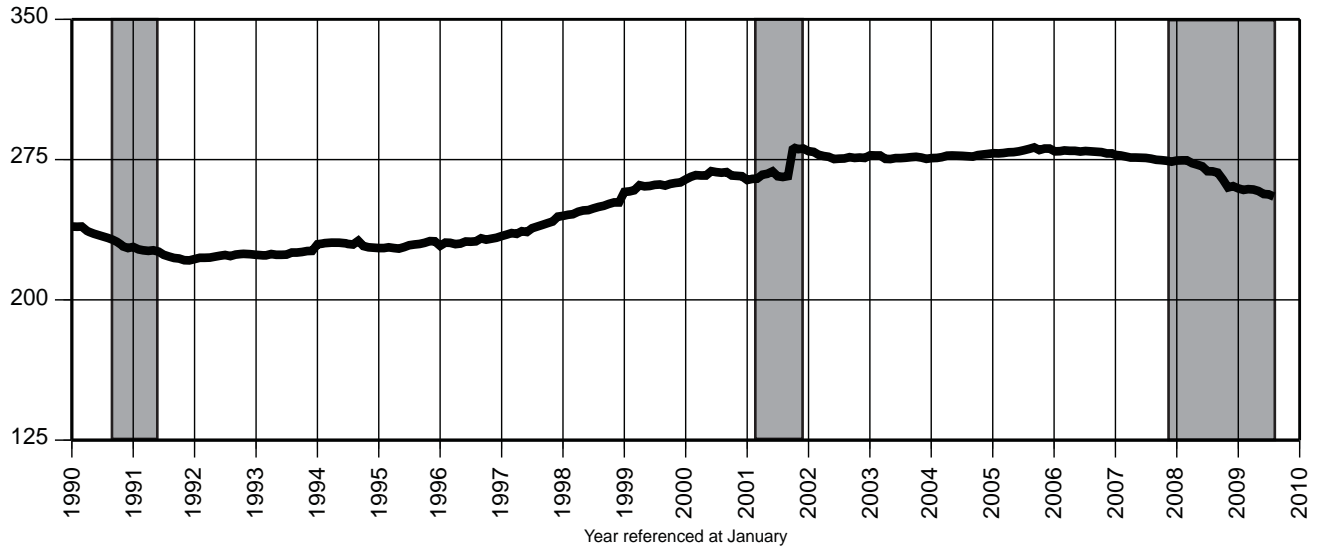
14. Professional & Business Services Payroll Employment (000)

Date	2006		2007		2008		2009	
	Unadj.	Adj.	Unadj.	Adj.	Unadj.	Adj.	Unadj.	Adj.
Jan	577.8	596.7	588.8	607.8	605.5	624.7	574.1	591.5
Feb	583.3	600.9	590.1	607.3	606.8	624.2	566.6	584.4
Mar	592.3	602.5	599.1	609.2	612.7	622.9	570.4	581.1
Apr	598.2	599.8	610.3	612.1	618.7	620.7	575.6	577.8
May	603.9	602.8	616.5	615.5	619.4	618.6	579.3	578.3
Jun	613.7	604.8	626.5	617.3	625.5	616.4	585.1	578.3
Jul	611.9	604.2	628.0	620.0	624.7	616.8	591.4R	582.4R
Aug	616.0	606.8	630.7	621.1	624.9	615.3	594.6	584.2
Sep	613.1	607.6	626.3	621.2	618.4	613.7		
Oct	614.2	608.6	627.6	622.2	613.4	606.3		
Nov	615.6	609.6	628.9	622.8	609.2	603.7		
Dec	615.1	610.7	626.9	622.4	599.9	599.3		

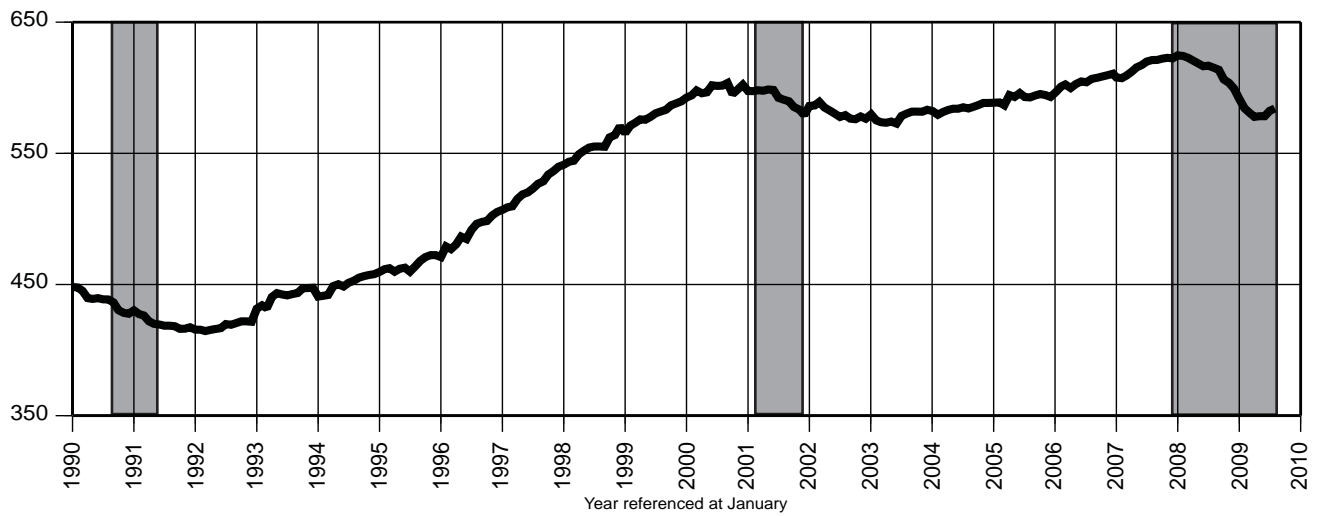
15. Educational & Health Services Payroll Employment (000)

Date	2006		2007		2008		2009	
	Unadj.	Adj.	Unadj.	Adj.	Unadj.	Adj.	Unadj.	Adj.
Jan	560.8	564.4	571.6	575.0	583.7	586.9	595.3	597.9
Feb	563.2	563.9	575.6	576.0	587.7	587.9	598.6	599.1
Mar	567.1	565.2	580.1	577.9	590.5	588.2	600.5	598.3
Apr	566.1	565.2	577.4	576.5	590.9	589.9	601.3	599.2
May	571.1	566.8	583.8	579.5	592.7	588.3	601.7	597.7
Jun	571.3	567.9	582.0	578.5	593.7	590.2	599.4	596.7
Jul	563.7	568.1	575.1	579.8	585.2	590.1	589.2R	593.5R
Aug	562.0	570.5	571.4	580.2	582.1	591.0	584.6	593.6
Sep	567.3	571.2	577.2	581.3	587.6	591.8		
Oct	572.7	570.6	586.7	584.7	601.5	599.8		
Nov	575.9	572.5	586.1	582.8	603.6	599.9		
Dec	579.1	574.4	589.6	584.8	604.4	600.3		

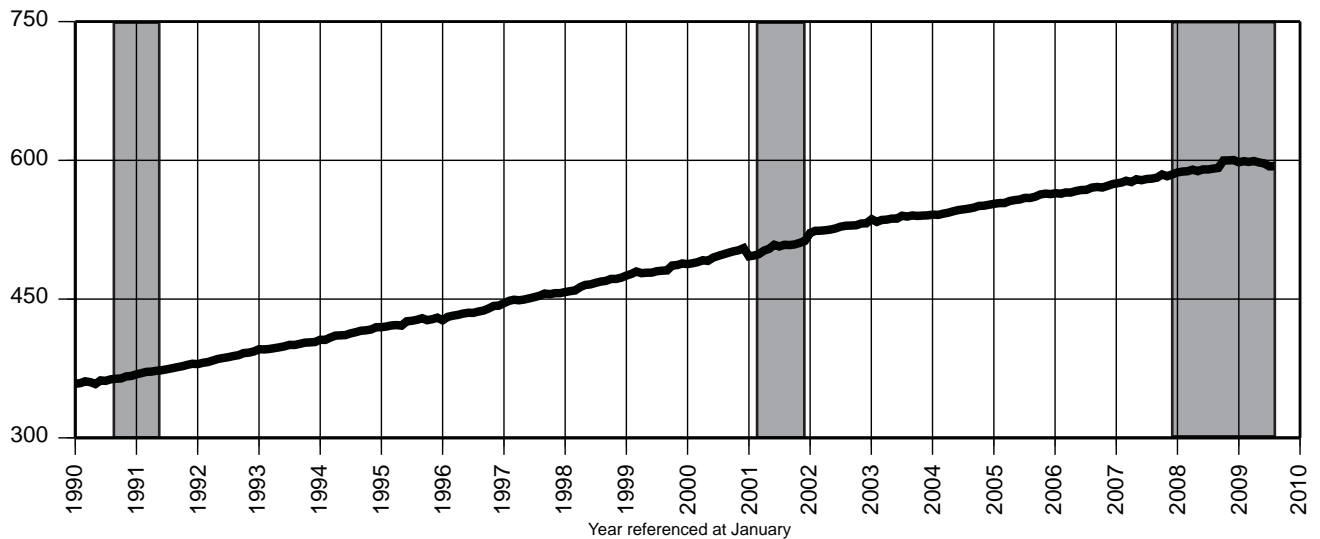
13. Financial Activities Payroll Employment (000)



14. Professional & Business Services Payroll Employment (000)



15. Educational & Health Services Payroll Employment (000)



Indicator Series 16-18 Leisure & Hospitality, CPI and Confidence Index

16. Leisure & Hospitality Payroll Employment (000)

Date	2006		2007		2008		2009	
	Unadj.	Adj.	Unadj.	Adj.	Unadj.	Adj.	Unadj.	Adj.
Jan	310.7	336.3	313.2	338.9	317.3	343.8	321.5	346.0
Feb	310.8	336.4	312.8	338.6	317.9	344.5	318.1	343.4
Mar	319.0	339.0	318.2	338.1	325.0	345.2	320.2	340.1
Apr	327.5	337.0	328.0	337.3	336.5	345.8	323.2	332.8
May	343.7	337.3	345.6	338.8	352.4	345.2	341.6	336.6
Jun	366.5	340.0	367.9	340.7	371.8	343.9	358.0	333.6
Jul	371.5	339.2	371.9	339.3	374.1	341.6	371.3R	338.7R
Aug	368.7	339.4	369.2	339.7	369.8	340.2	367.6	338.6
Sep	352.7	340.4	349.7	337.7	352.3	340.5		
Oct	333.2	338.6	337.9	343.6	340.9	344.3		
Nov	329.2	339.0	333.4	343.7	337.0	346.0		
Dec	328.1	339.1	332.1	343.6	335.1	345.7		

17. Consumer Price Index - (CPI-U) (1982-84 = 100)

Date	2007			2008			2009		
	US	NY	PA	US	NY	PA	US	NY	PA
Jan	202.416	221.767	*	211.080	229.869	*	211.143	233.402	*
Feb	203.499	223.066	213.152	211.693	231.020	220.935	212.193	234.663	220.262
Mar	205.352	224.551	*	213.528	233.122	*	212.709	235.067	*
Apr	206.686	225.780	215.270	214.823	233.822	223.622	213.240	235.582	221.686
May	207.949	227.146	*	216.632	236.151	*	213.856	235.975	*
Jun	208.352	228.258	217.255	218.815	238.580	228.408	215.693	237.172	223.810
Jul	208.299	228.628	*	219.964	240.273	*	215.351	237.600	*
Aug	207.917	228.326	218.692	219.086	240.550	228.337	215.834	238.282	226.039
Sep	208.490	228.308	*	218.783	240.089	*			
Oct	208.936	228.552	218.929	216.573	238.403	225.113			
Nov	210.177	229.504	*	212.425	234.498	*			
Dec	210.036	229.395	219.025	210.228	233.012	218.186			

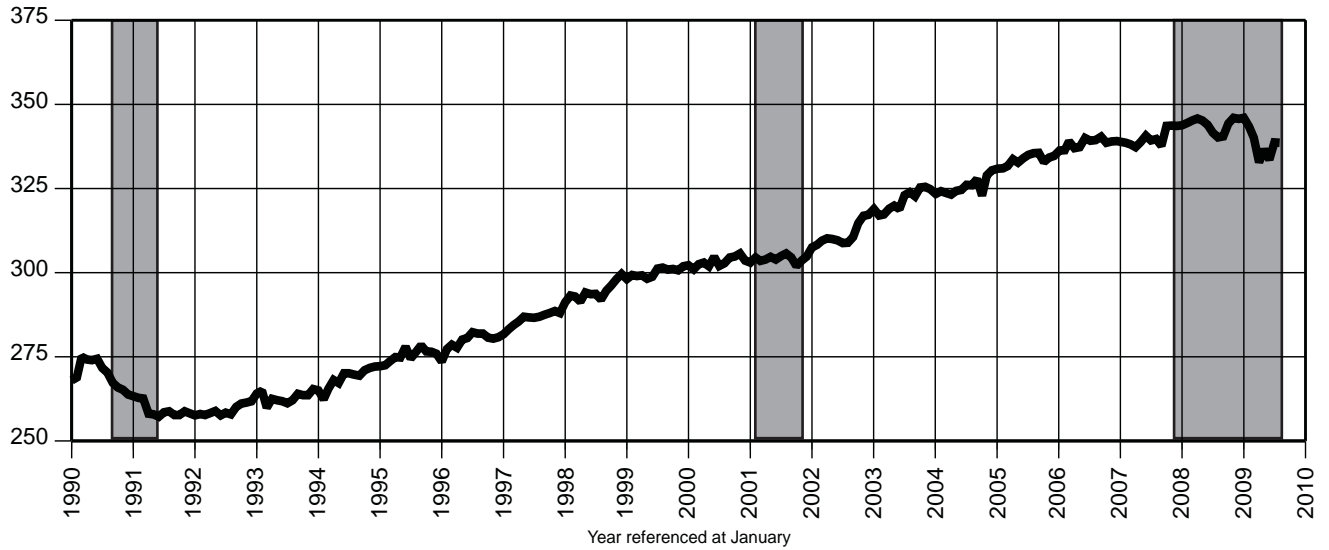
18. Consumer Confidence Index, US

(Seasonally unadjusted)

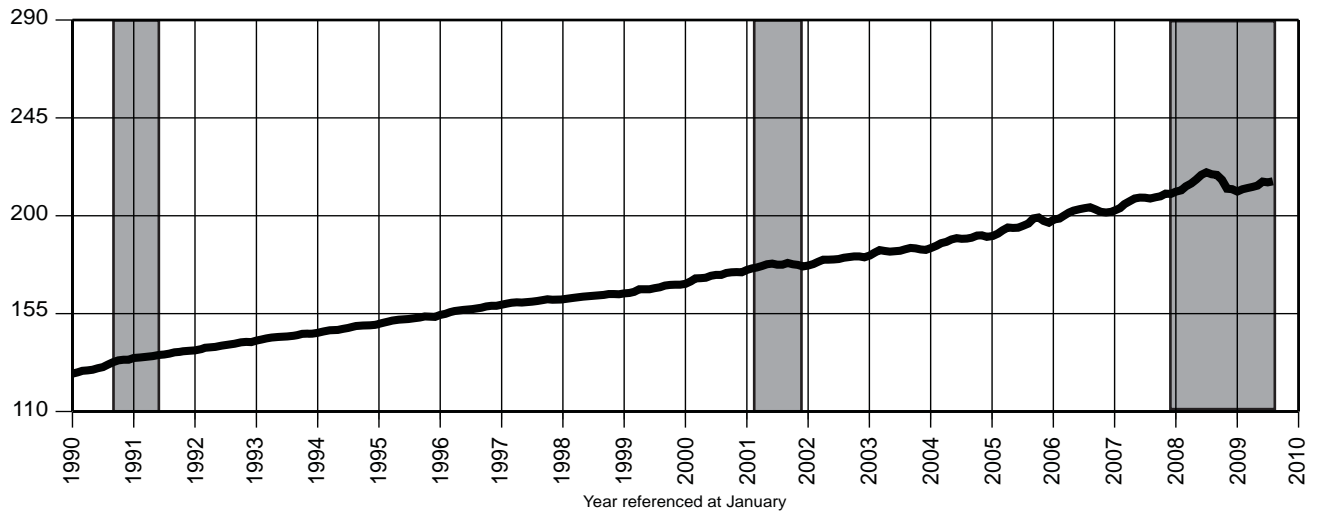
Date	2006	2007	2008	2009
Jan	106.8	110.2	87.3	37.4
Feb	102.7	111.2	76.4	25.3
Mar	107.5	108.2	65.9	26.9
Apr	109.8	106.3	62.8	40.8
May	104.7	108.5	58.1	54.8
Jun	105.4	105.3	51.0	49.3
Jul	107.0	111.9	51.9	47.4
Aug	100.2	105.6	58.5	54.5
Sep	105.9	99.5	61.4	
Oct	105.1	95.2	38.8	
Nov	105.3	87.8	44.7	
Dec	110.0	90.6	38.6	

Indicator Series 16-18 Leisure & Hospitality, CPI and Confidence Index

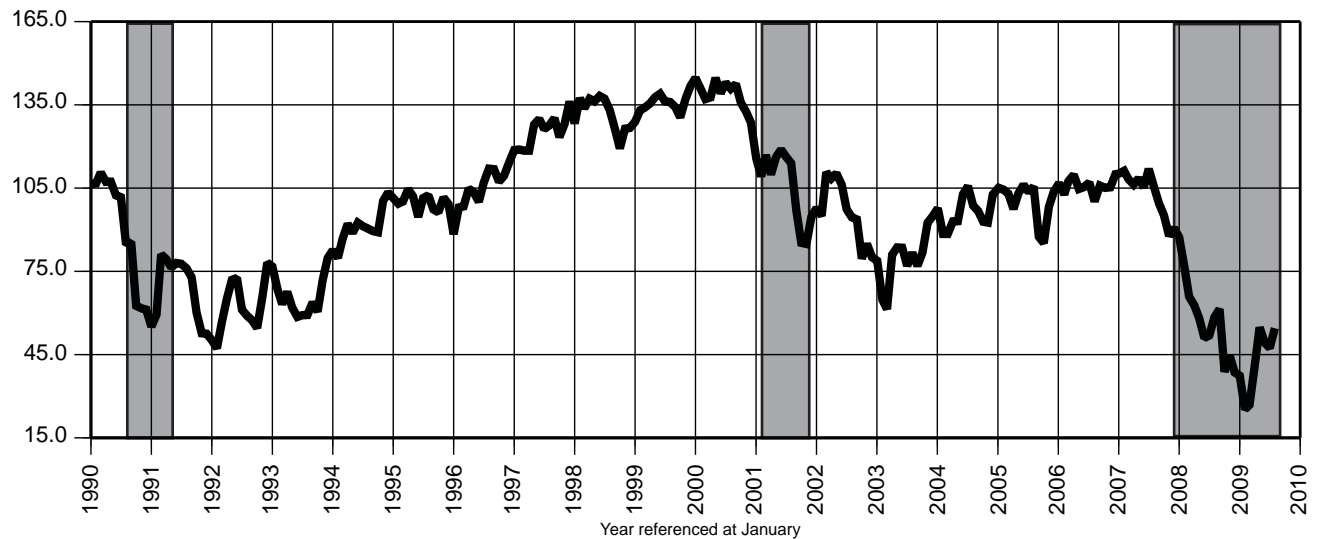
16. Leisure & Hospitality Payroll Employment (000)



17. Consumer Price Index - (CPI-U) (1982-84 = 100)



18. Consumer Confidence Index, US



Indicator Series 19-21 Private Residential Building Permits

19. Total Private Dwelling Units Authorized by Building Permits

Date	2006		2007		2008		2009	
	Unadj.	Adj.	Unadj.	Adj.	Unadj.	Adj.	Unadj.	Adj.
Jan	2,548	3,006	2,077	2,248	1,635	1,812	706R	815R
Feb	2,502	3,272	1,648	2,184	1,301	1,654	1,291R	1,714R
Mar	2,989	2,946	1,871	1,902	2,074	2,167	1,312R	1,358R
Apr	2,654	2,597	2,100	1,983	2,197	1,907	774R	683R
May	3,044	2,838	1,992	1,928	1,658	1,660	1,025R	1,087R
Jun	3,314	2,635	2,759	2,117	2,385	1,949	869R	658R
Jul	4,516	4,616	1,905	1,984	1,301	1,272	763	752
Aug	2,675	2,466	3,084	2,919	1,150	1,205		
Sep	2,850	2,762	1,896	1,940	1,386	1,286		
Oct	2,030	1,945	2,283	1,983	1,279	1,161		
Nov	3,196	3,132	2,133	2,145	917	985		
Dec	2,024	2,492	1,652	2,000	1,086	1,135		

20. Private Single-Family Dwelling Units Authorized by Building Permits

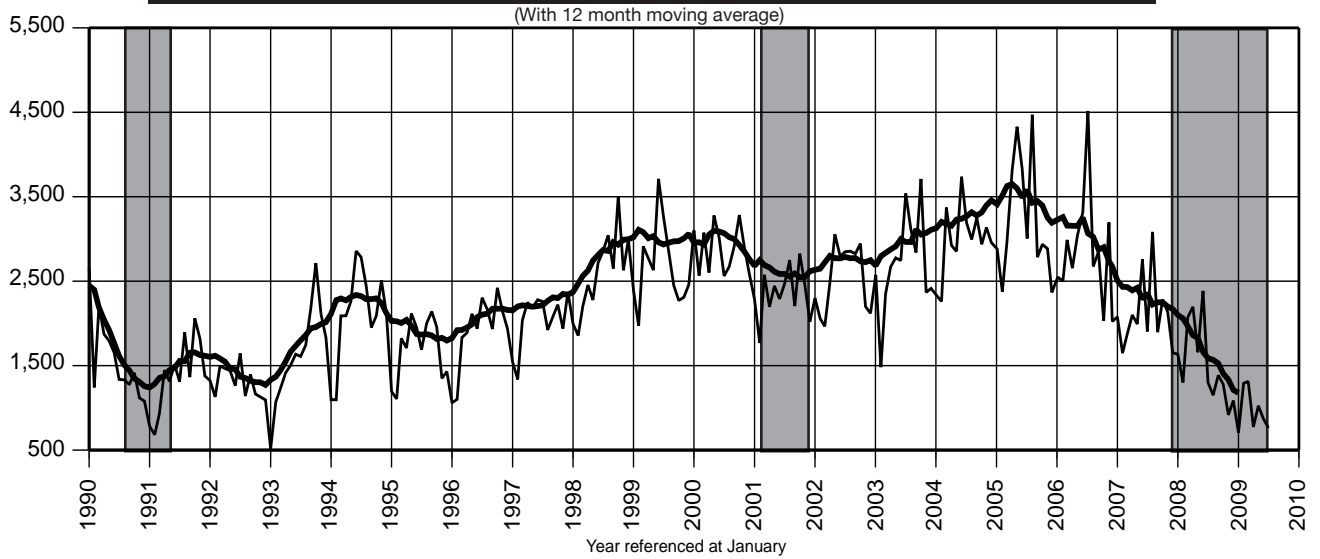
Date	2006		2007		2008		2009	
	Unadj.	Adj.	Unadj.	Adj.	Unadj.	Adj.	Unadj.	Adj.
Jan	1,592	1,839	1,084	1,216	830	872	429R	474R
Feb	1,301	1,641	953	1,200	668	806	369R	467R
Mar	1,766	1,644	1,137	1,104	855	878	501R	485R
Apr	1,457	1,562	1,109	1,137	1,057	976	548R	517R
May	1,674	1,539	1,264	1,140	825	756	637R	615R
Jun	1,635	1,356	1,328	1,158	759	700	687R	589R
Jul	1,626	1,577	1,183	1,104	779	679	613	547
Aug	1,536	1,321	1,552	1,324	741	696		
Sep	1,184	1,223	901	966	729	745		
Oct	1,254	1,185	937	873	800	715		
Nov	1,073	1,121	879	917	502	602		
Dec	1,032	1,221	750	891	630	692		

21. Private Multi-Dwelling Units Authorized by Building Permits

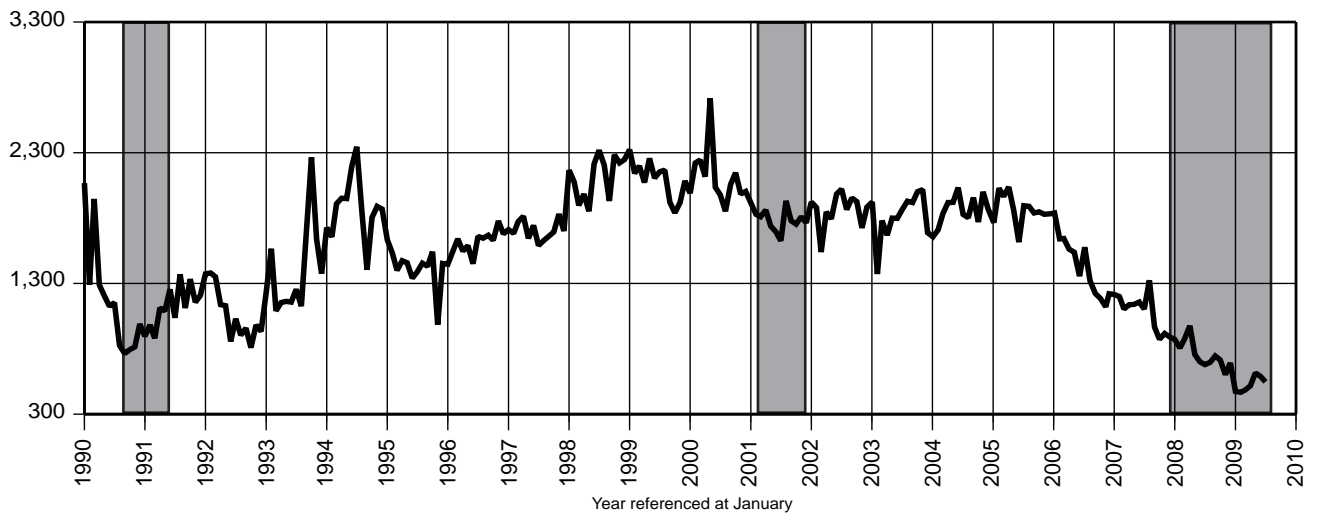
(Seasonality not statistically significant)

Date	2006	2007	2008	2009
	Unadj.	Unadj.	Unadj.	Unadj.
Jan	471	759	730	229
Feb	924	379	531	899R
Mar	694	514	1,124	751R
Apr	876	767	987	166R
May	950	527	739	336R
Jun	1,195	1,137	1,523	133R
Jul	2,250	509	427	98
Aug	814	1,184	363	
Sep	1,306	821	589	
Oct	371	1,013	406	
Nov	1,844	1,055	373	
Dec	719	655	327	

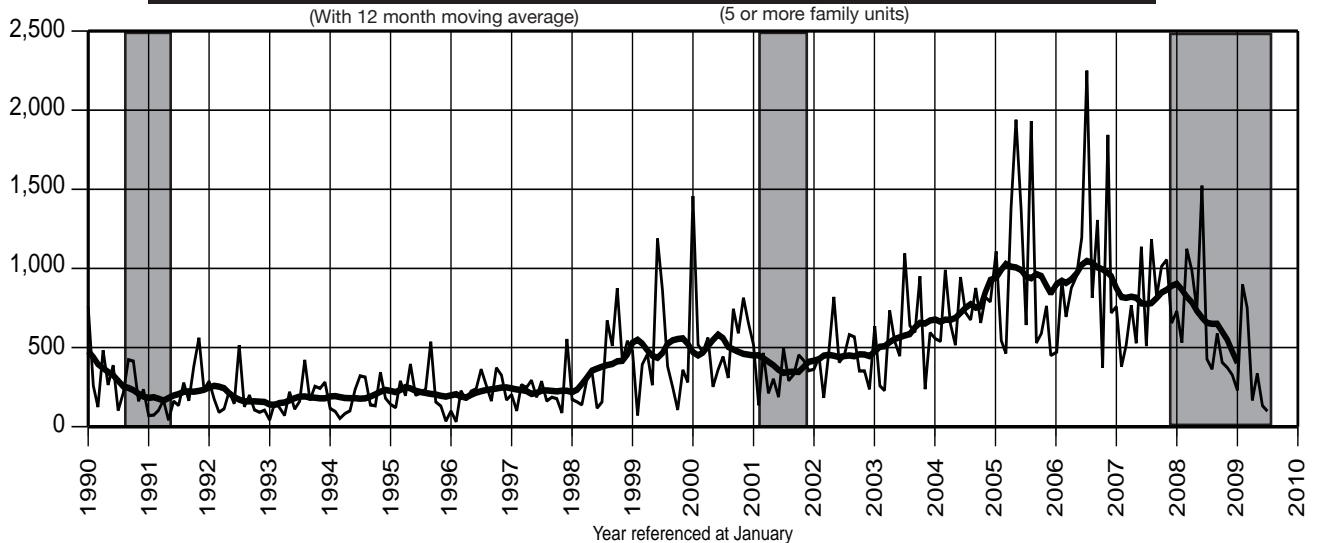
19. Total Private Dwelling Units Authorized by Building Permits



20. Private Single-Family Dwelling Units Authorized by Building Permits



21. Private Multi-Dwelling Units Authorized by Building Permits



22. Total New Vehicle Registrations*

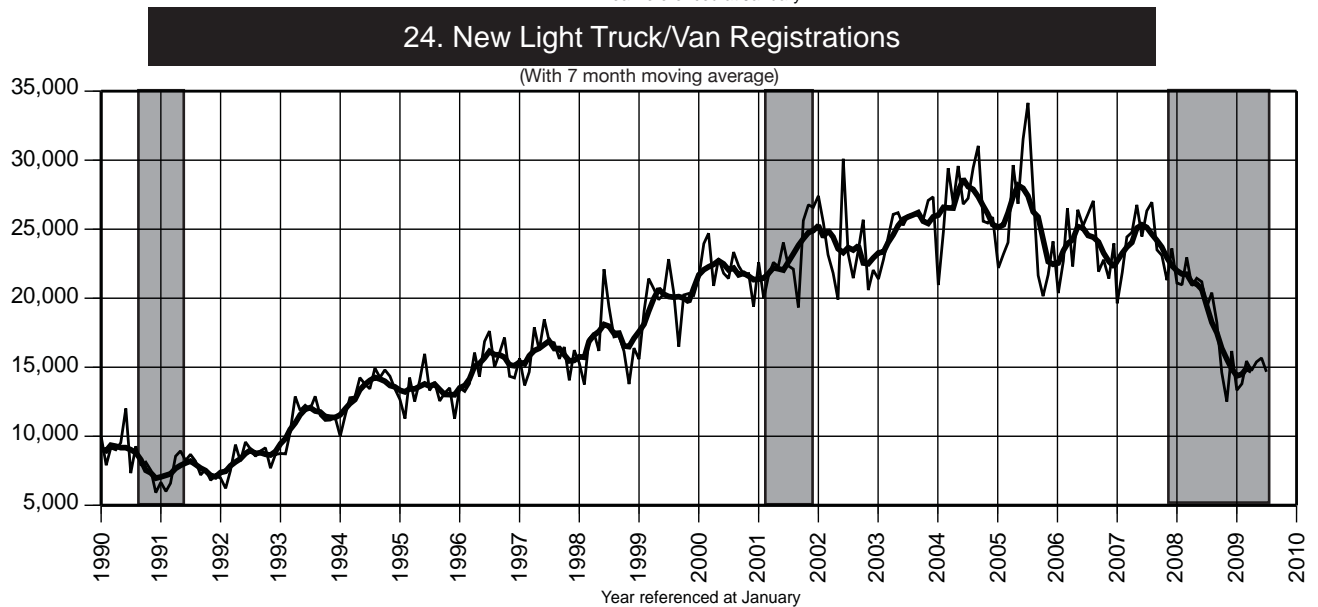
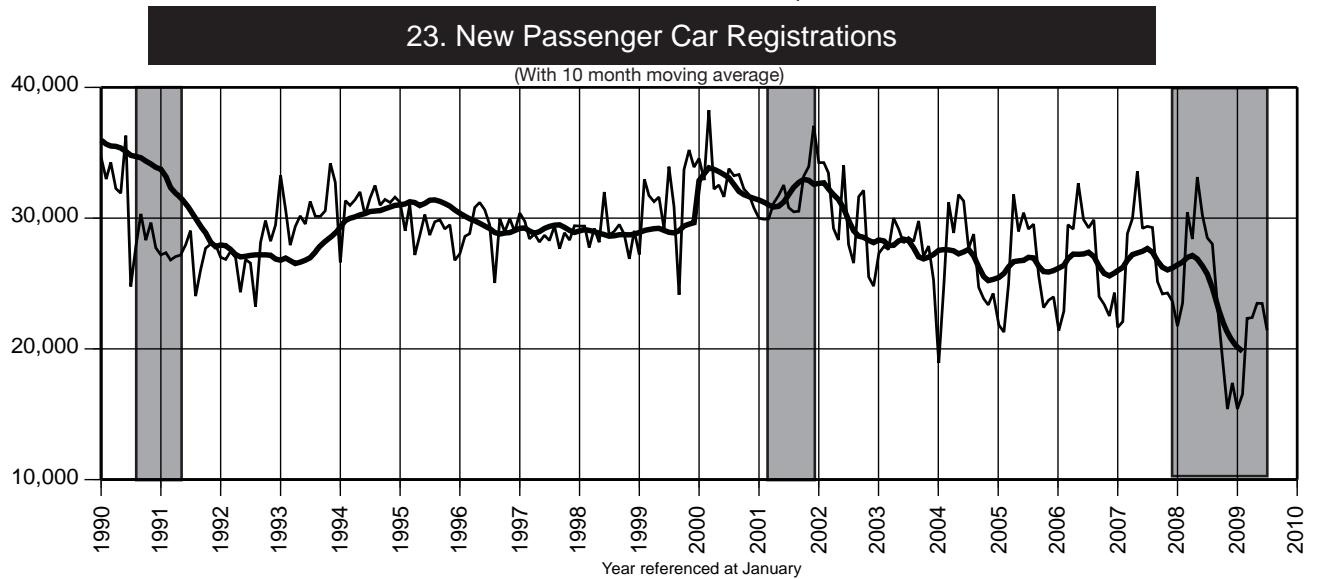
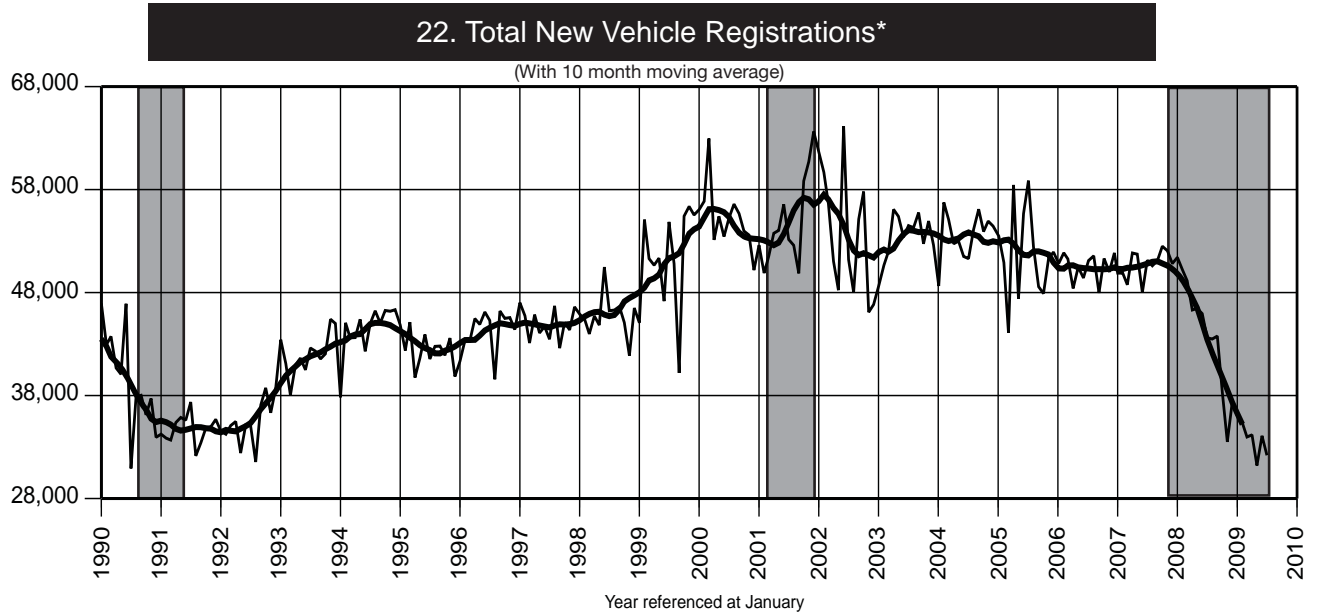
Date	2006		2007		2008		2009	
	Unadj.	Adj.	Unadj.	Adj.	Unadj.	Adj.	Unadj.	Adj.
Jan	41,772	50,824	41,273	49,890	42,834	51,414	28,743	36,026
Feb	45,584	51,857	43,966	49,893	44,478	50,203	30,329R	35,341R
Mar	56,014	51,259	53,249	48,760	53,401	49,138	37,779R	33,978R
Apr	51,459	48,400	54,747	51,838	49,305	46,311	37,157R	34,177R
May	59,073	50,472	60,346	51,725	54,589	46,462	38,870R	31,205R
Jun	55,134	49,423	53,686	48,002	51,425	45,945	39,144R	34,090R
Jul	55,377	51,101	55,701	51,134	47,829	43,601	36,087	32,197
Aug	56,929	51,563	56,233	50,600	48,422	43,490		
Sep	45,923	47,968	48,643	51,104	41,536	43,769		
Oct	46,191	51,306	47,303	52,493	33,948	38,400		
Nov	43,940	50,007	45,582	52,060	27,905	33,500		
Dec	48,275	51,848	47,245	50,815	33,572	37,350		

23. New Passenger Car Registrations

Date	2006		2007		2008		2009	
	Unadj.	Adj.	Unadj.	Adj.	Unadj.	Adj.	Unadj.	Adj.
Jan	21,401	26,499	21,644	26,864	21,735	26,971	15,408	20,661
Feb	22,890	27,010	22,089	26,174	23,505	27,573	16,529R	20,523R
Mar	29,499	26,569	28,814	25,904	30,446	27,578	22,332	19,445
Apr	29,158	26,559	29,977	27,404	28,401	25,685	22,392R	19,611R
May	32,664	26,768	33,583	27,476	33,144	26,908	23,488	17,148
Jun	29,891	25,923	29,219	25,283	30,234	26,278	23,475	19,493
Jul	29,260	26,741	29,372	26,655	28,493	25,677	21,417	18,595
Aug	29,876	27,049	29,281	26,368	28,017	25,150		
Sep	23,999	25,370	25,142	26,636	23,293	24,717		
Oct	23,406	26,614	24,202	27,439	19,335	22,559		
Nov	22,517	26,091	24,277	28,060	15,395	19,326		
Dec	24,301	27,699	23,636	27,150	17,398	21,172		

24. New Light Truck/Van Registrations

Date	2006		2007		2008		2009	
	Unadj.	Adj.	Unadj.	Adj.	Unadj.	Adj.	Unadj.	Adj.
Jan	20,371	24,325	19,629	23,026	21,099	24,442	13,335	15,366
Feb	22,694	24,847	21,877	23,720	20,973	22,631	13,800	14,818
Mar	26,515	24,690	24,435	22,857	22,955	21,560	15,447R	14,533R
Apr	22,301	21,841	24,770	24,434	20,904	20,626	14,765R	14,566R
May	26,409	23,704	26,763	24,249	21,445	19,553	15,382R	14,057R
Jun	25,243	23,500	24,467	22,719	21,191	19,668	15,669R	14,597R
Jul	26,117	24,361	26,329	24,479	19,336	17,924	14,670	13,602
Aug	27,053	24,514	26,952	24,232	20,405	18,341		
Sep	21,924	22,597	23,501	24,469	18,243	19,049		
Oct	22,785	24,692	23,101	25,054	14,613	15,841		
Nov	21,423	23,915	21,305	24,000	12,510	14,174		
Dec	23,974	24,149	23,609	23,664	16,174	16,178		



*Includes only new passenger car and light truck/van registrations

Indicator Series 25-27 Unemployment Insurance Claimants

25. Weeks Claimed & Insured Unemployment Rate

Date	2006		2007		2008		2009	
	WA	IUR	WA	IUR	WA	IUR	WA	IUR
Jan	107.9	2.8	108.5	2.8	114.4	2.9	172.7	4.4
Feb	105.7	2.8	111.1	2.9	114.2	2.9	184.3	4.7
Mar	105.0	2.7	111.6	2.9	117.0	3.0	201.0	5.1
Apr	104.7	2.7	112.5	2.9	119.2	3.1	220.6	5.7
May	105.4	2.7	111.8	2.9	124.0	3.2	230.9	5.9
Jun	105.9	2.8	111.2	2.9	126.4	3.2	225.5	5.8
Jul	111.8	2.9	113.6	2.9	128.5	3.3	206.4	5.3
Aug	110.6	2.9	113.0	2.9	132.1	3.4	195.5	5.0
Sep	110.7	2.9	112.8	2.9	141.2	3.6		
Oct	108.9	2.8	112.8	2.9	150.0	3.8		
Nov	109.6	2.8	112.5	2.9	158.9	4.1		
Dec	108.5	2.8	113.0	2.9	165.6	4.2		

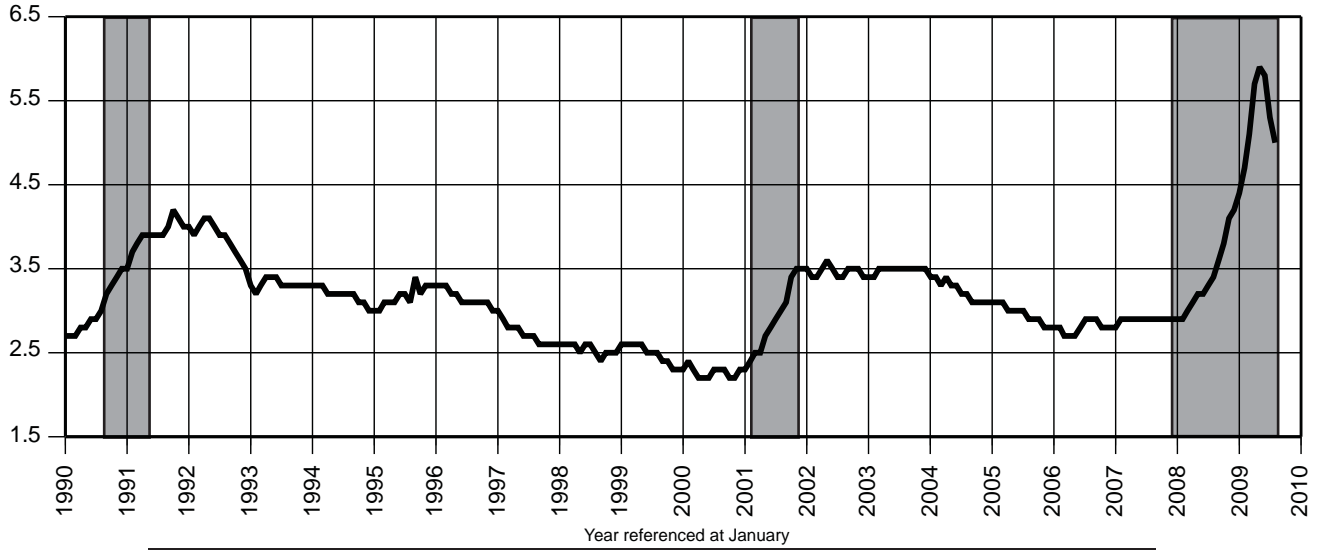
26. Initial Claims-Weekly Average

Date	2006		2007		2008		2009	
	Unadj.	Adj.	Unadj.	Adj.	Unadj.	Adj.	Unadj.	Adj.
Jan	13,034	10,111	13,850	10,859	13,768	10,606	20,137	14,634
Feb	9,451	9,749	10,515	10,923	10,184	10,004	17,193	17,917
Mar	7,927	9,357	8,609	10,073	10,260	12,631	13,895	17,723
Apr	10,564	10,202	11,080	10,822	10,163	10,088	14,848	14,086
May	7,638	10,387	8,087	10,746	8,653	10,793	12,197	15,503
Jun	12,675	10,165	12,320	9,911	13,684	11,511	16,656	14,325
Jul	10,521	10,881	10,299	11,042	10,839	11,331	13,673	13,614
Aug	8,617	10,682	8,600	10,150	9,691	11,507	10,978	13,426
Sep	7,736	9,626	8,138	10,428	10,258	13,694		
Oct	8,535	10,348	9,136	11,027	11,748	13,201		
Nov	10,883	10,466	11,304	10,430	16,083	15,264		
Dec	13,813	9,540	14,785	10,609	17,301	12,952		

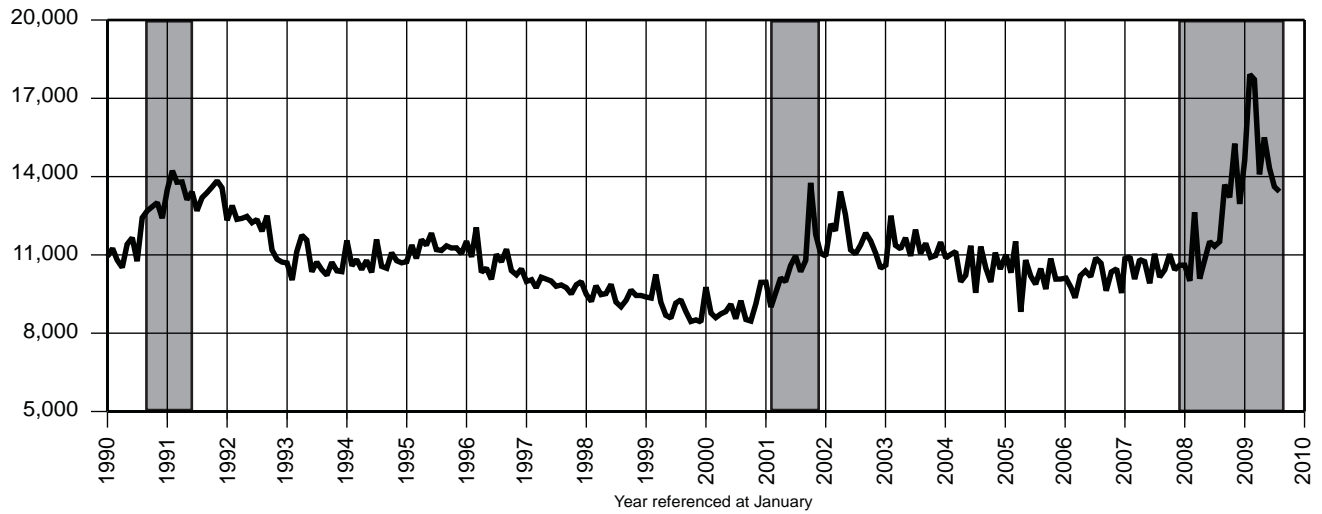
27. Unemployment Insurance Exhaustions

Date	2006	2007	2008	2009
	Unadj.	Unadj.	Unadj.	Unadj.
Jan	13,638	13,845	12,987	16,512
Feb	10,404	10,443	10,694	16,379
Mar	11,647	11,335	13,131	21,982
Apr	11,352	12,919	13,650	21,928
May	12,753	12,807	11,961	23,347
Jun	10,096	10,064	12,531	27,659
Jul	12,361	13,085	14,466	29,284
Aug	10,841	10,486	12,481	28,916
Sep	9,439	10,014	14,953	
Oct	11,752	12,248	13,695	
Nov	9,862	9,909	13,103	
Dec	10,409	11,961	18,460	

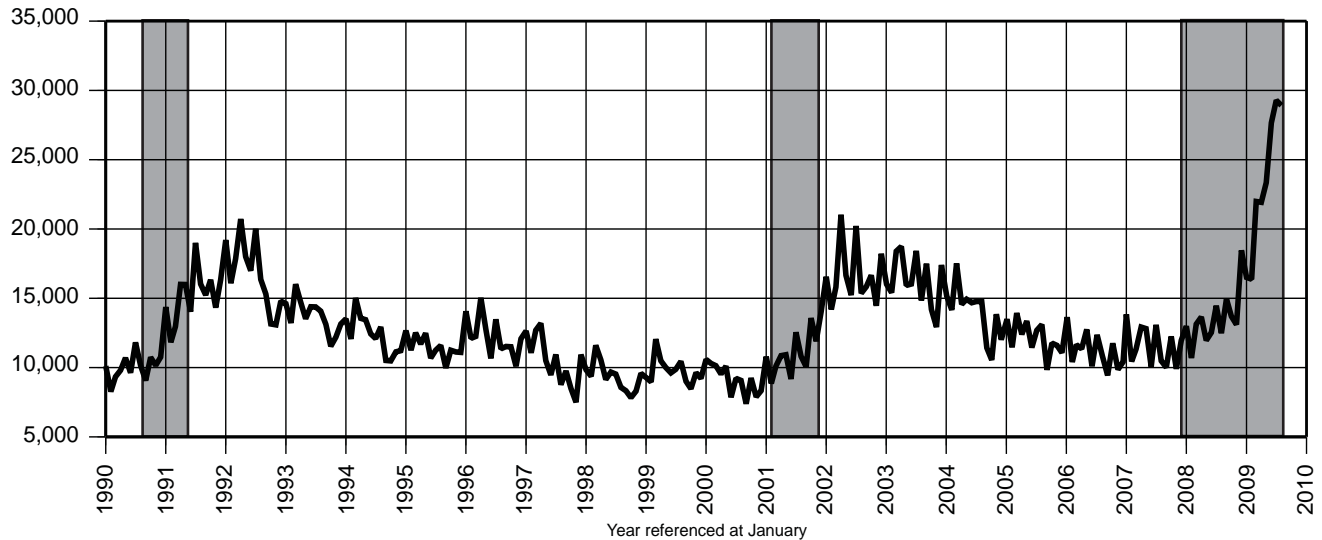
25. Insured Unemployment Rate



26. Initial Claims-Weekly Average



27. Unemployment Insurance Exhaustions



Indicator Series 1 to 27

Annual Averages 1998-2008											
Indicator Series	1998	1999	2000	2001	2002	2003	2004	2005	2006	2007	2008
1 Civilian Labor Force (000)	4,242.4	4,284.6	4,287.8	4,302.3	4,370.8	4,363.9	4,358.9	4,416.1	4,477.5	4,462.3	4,496.7
2 Resident Employment (000)	4,047.1	4,092.7	4,130.3	4,117.5	4,117.3	4,108.4	4,144.2	4,218.5	4,269.6	4,271.7	4,251.2
3 Resident Unemployment (000)	195.3	191.8	157.5	184.8	253.5	255.5	214.7	197.6	207.9	190.6	245.5
4 Labor Force Particip. Rate (%)	66.8	67.0	66.6	66.2	66.7	66.1	65.8	66.3	66.9	66.4	66.2
5 Employment/Pop. Rate (%)	63.7	64.0	64.1	66.3	62.6	62.2	62.6	63.4	63.8	63.6	62.9
6 Unemployment Rate (%)	4.6	4.5	3.7	4.3	5.8	5.9	4.9	4.5	4.6	4.3	5.5
7 Nonfarm Payroll Emp. (000)	3,801.3	3,901.1	3,994.5	3,997.2	3,983.9	3,978.8	3,999.1	4,039.1	4,071.0	4,078.9	4,058.3
8 Priv. Sec. Nonfarm Emp. (000)	3,229.6	3,323.5	3,405.7	3,394.6	3,370.4	3,356.9	3,365.7	3,397.5	3,423.7	3,431.2	3,407.1
9 Construction Emp. (000)	136.1	143.6	149.6	158.8	162.6	160.5	165.9	169.1	174.9	172.3	164.8
10 Manufacturing Emp. (000)	429.4	422.5	421.6	401.2	367.5	350.4	338.2	330.4	323.8	311.3	298.9
11 Trade, Transportation and Utilities Emp. (000)	847.6	873.7	899.0	890.7	881.4	876.2	874.7	877.3	874.9	874.5	864.0
12 Information Emp. (000)	118.9	123.0	126.9	126.4	113.2	102.0	98.0	97.1	97.4	96.0	92.4
13 Financial Activities Emp. (000)	248.7	260.8	266.9	269.8	276.7	276.2	276.9	279.7	279.2	275.7	269.3
14 Professional and Business Services Emp. (000)	554.0	579.1	598.5	592.5	581.1	578.2	584.5	592.5	604.6	616.6	614.9
15 Education and Health Services Emp. (000)	466.1	480.9	495.8	505.4	527.1	538.0	546.4	558.4	568.4	579.7	592.0
16 Leisure & Hospitality Emp. (000)	294.2	300.0	303.3	304.2	311.0	321.4	325.5	333.4	338.5	340.0	344.2
17 CPI-U for the US ('82-'84=100)	163.0	166.6	172.2	177.1	179.9	184.0	188.9	195.3	201.6	207.3	215.3
18 US Consumer Confidence Index	131.7	135.3	139.0	106.6	96.6	79.8	96.1	100.3	105.9	103.4	58.0
19 Total Dwelling Units (No.) - F	2,612	2,665	2,880	2,356	2,538	2,715	2,995	3,219	2,862	2,117	1,531
20 Single-Fam. Dwell. Units (No.) - F	2,122	2,094	2,103	1,793	1,864	1,820	1,870	1,856	1,428	1,090	765
21 Multi-Fam. Dwell. Units (No.) - F	374	424	515	347	435	580	728	976	1,035	777	677
22 Tot. New Vehicle Regis. (No.)	45,884	50,990	55,301	54,624	53,865	53,584	53,510	51,784	50,473	50,664	44,103
23 New Passenger Car Regis. (No.)	29,047	31,201	33,120	31,667	30,183	28,149	26,631	26,199	26,572	26,770	24,950
24 New Lt. Truck/Van Regis. (No.)	16,837	19,790	22,182	22,957	23,683	25,435	26,879	25,591	23,901	23,895	19,154
25 Wks. Claimed Wkly. Avg. (000)	90.2	90.8	84.3	108.4	132.4	130.9	122.6	112.9	107.9	112.0	131.6
26 Insured Unemp. Rate (%)	2.6	2.5	2.3	2.9	3.5	3.5	3.2	3.0	2.8	2.9	3.4
Initial Claims Wkly. Avg. (No.)	9,454	9,003	9,056	10,637	11,595	11,331	10,730	10,323	10,116	10,560	11,886
27 Exhaustions (No.)	9,360	9,757	9,138	11,136	16,686	16,317	14,034	12,179	11,213	11,593	13,509

Notes: See page S-32 for data sources. Data shown using latest available benchmarks. For Dwelling Unit data, "F"=Final.

Employment Data

New Jersey Nonfarm Payroll Employment (000)

(seasonally adjusted)

NAICS Industry	2008					2009							
	Aug	Sep	Oct	Nov	Dec	Jan	Feb	Mar	Apr	May	Jun	Jul	Aug
Total Nonfarm (1)*	4,051.1	4,046.6	4,037.4	4,014.6	4,000.5	3,987.8	3,973.3	3,960.0	3,941.3	3,933.3	3,930.2	3,929.7	3,930.5
Total Private Sector*	3,401.4	3,396.5	3,382.9	3,361.5	3,348.1	3,335.8	3,322.8	3,309.1	3,289.2	3,282.0	3,279.8	3,285.4	3,288.3
Goods Producing*	463.6	461.6	456.0	450.5	444.5	435.4	429.6	426.7	419.8	414.4	415.4	421.2	418.9
Natural Resources and Mining**	1.7	1.7	1.7	1.7	1.7	1.5	1.5	1.6	1.6	1.7	1.7	1.7	1.7
Construction	163.1	162.3	161.8	158.7	156.6	153.8	151.2	151.9	146.8	141.3	140.9	144.0	144.1
Manufacturing*	298.8	297.6	292.5	290.1	286.2	280.1	276.9	273.2	271.4	271.4	272.8	275.5	273.1
Durable Goods	135.0	134.2	132.8	130.9	128.9	125.9	122.6	120.6	120.2	120.1	120.4	122.2	121.4
Non-Durable Goods	163.8	163.4	159.7	159.2	157.3	154.2	154.3	152.6	151.2	151.3	152.4	153.3	151.7
Service-Providing*	3,587.5	3,585.0	3,581.4	3,564.1	3,556.0	3,552.4	3,543.7	3,533.2	3,521.5	3,518.9	3,514.8	3,508.5	3,511.6
Private Service-Providing*	2,937.8	2,934.9	2,926.9	2,911.0	2,903.6	2,900.4	2,893.2	2,882.4	2,869.4	2,867.6	2,864.4	2,864.2	2,869.4
Trade, Transportation, & Utilities*	864.7	863.3	855.2	848.6	844.0	851.3	853.5	851.7	847.7	843.9	843.7	836.6	839.7
Wholesale Trade	230.9	230.7	229.9	230.2	230.4	231.4	228.4	228.0	227.2	226.4	225.2	222.6	224.3
Retail Trade	459.1	459.0	453.9	447.4	443.7	449.3	455.3	455.9	454.9	452.9	452.6	451.8	452.5
Trans., Warehousing, and Utilities	174.7	173.6	171.4	171.0	169.9	170.6	169.8	167.8	165.6	164.6	165.9	162.2	162.9
Information	91.8	91.5	90.7	90.2	90.1	90.4	89.8	88.9	90.1	88.8	87.7	88.6	89.5
Financial Activities*	268.7	268.0	264.4	260.1	260.8	259.6	258.8	259.2	259.0	258.2	256.6	256.4	255.2
Finance and Insurance	209.1	208.3	203.0	199.2	200.4	203.4	204.2	204.6	204.7	203.2	202.2	199.3	199.0
Real Estate/Rental & Leasing	59.6	59.7	61.4	60.9	60.4	56.2	54.6	54.6	54.3	55.0	54.4	57.1	56.2
Prof. and Business Services*	615.3	613.7	606.3	603.7	599.3	591.5	584.4	581.1	577.8	578.3	578.3	582.4	584.2
Prof., Sci., & Tech. Services	290.5	290.4	291.8	290.0	288.4	281.5	280.2	280.0	275.2	273.1	274.2	275.3	274.8
Mgmt. of Companies & Enterprises	75.1	75.1	74.3	73.9	73.7	75.5	75.1	74.6	75.0	74.9	74.8	75.2	75.9
Adm/Support, Waste Mgt/ Remed. Srvs.	249.7	248.2	240.2	239.8	237.2	234.5	229.1	226.5	227.6	230.3	229.3	231.9	233.5
Educational and Health Services*	591.0	591.8	599.8	599.9	600.3	597.9	599.1	598.3	599.2	597.7	596.7	593.5	593.6
Educational Services	90.2	90.7	94.8	93.7	94.8	94.2	96.3	95.8	94.3	92.6	91.6	89.5	89.9
Health Care and Social Assistance	500.8	501.1	505.0	506.2	505.5	503.7	502.8	502.5	504.9	505.1	505.1	504.0	503.7
Leisure and Hospitality*	340.2	340.5	344.3	346.0	345.7	346.0	343.4	340.1	332.8	336.6	333.6	338.7	338.6
Arts, Entertainment, & Recreation	53.8	53.1	54.3	55.5	56.0	56.4	56.6	55.4	51.0	52.1	51.2	56.2	55.6
Accommodation and Food Srvs.	286.4	287.4	290.0	290.5	289.7	289.6	286.8	284.7	281.8	284.5	282.4	282.5	283.0
Other Services (2)	166.1	166.1	166.2	162.5	163.4	163.7	164.2	163.1	162.8	164.1	167.8	168.0	168.6
Total Government*	649.7	650.1	654.5	653.1	652.4	652.0	650.5	650.9	652.1	651.3	650.4	644.3	642.2
Federal Government	59.8	59.6	59.8	58.8	58.7	59.3	58.9	58.8	60.7	60.7	59.0	59.1	58.6
State Government (3)	152.1	152.5	151.2	150.1	148.3	148.9	147.2	147.5	146.7	146.0	146.9	147.9	147.6
Local Government	437.8	438.0	443.5	444.2	445.4	443.8	444.4	444.6	444.7	444.6	444.5	437.3	436.0

Notes:

1. Nonfarm payroll employment includes civilians on nonfarm establishment payrolls who worked or received pay for any part of the pay period including the 12th of the month. It excludes proprietors, self-employed, unpaid family members and domestics in private households. All data are revised to March 2008 benchmarks. Individual series may not add to sector or supersector totals because not all sector/supersector components are published.
2. "Other Services" include: Repair and maintenance; Personal and laundry services; Religious, grantmaking, civic, professional and similar organizations.
3. The total number of state employees reported under this heading is determined on the basis of a definition developed by the US Bureau of Labor Statistics which is standardized throughout the nation. The definition includes both full- and part-time workers in the executive departments, the legislature, and the judiciary, as well as all employees of authorities, commissions, the state universities and colleges, and other agencies not included on the central payroll.

* Seasonally adjusted total has been indirectly computed from the sum of the underlying industries.

** The industry is not seasonally adjusted because seasonality is not statistically significant.

Employment Data

New Jersey Nonfarm Payroll Employment (000)

(not seasonally adjusted)

NAICS Industry	2008					2009							
	Aug	Sep	Oct	Nov	Dec	Jan	Feb	Mar	Apr	May	Jun	Jul	Aug
Total Nonfarm (1)	4,052.3	4,042.9	4,059.4	4,052.3	4,036.2	3,916.5	3,899.0	3,913.1	3,925.6	3,952.0	3,992.9	3,954.7	3,933.5
Total Private Sector	3,440.1	3,409.3	3,396.9	3,387.2	3,372.3	3,265.8	3,239.6	3,251.4	3,261.9	3,291.5	3,332.5	3,335.2	3,329.5
Goods Producing	472.0	468.5	462.2	455.2	446.7	422.6	413.1	415.1	416.3	416.1	422.4	427.9	427.1
Natural Resources and Mining	1.7	1.7	1.7	1.7	1.7	1.5	1.5	1.6	1.6	1.7	1.7	1.7	1.7
Construction	170.6	168.3	167.1	162.2	157.8	143.5	136.9	141.2	144.0	143.3	146.1	150.6	151.9
Construction of Buildings	38.8	38.0	37.3	37.0	37.8	35.6	34.3	33.8	33.0	32.2	34.1	34.0	34.9
Residential Building Construction	25.6	25.2	25.2	24.8	24.7	24.4	23.4	23.0	22.4	22.3	23.6	24.1	24.8
Heavy and Civil Engineering	19.6	19.5	19.9	19.5	18.1	15.1	15.2	16.1	17.4	18.2	18.5	19.2	19.0
Specialty Trade Contractors	112.2	110.8	109.9	105.7	101.9	92.8	87.4	91.3	93.6	92.9	93.5	97.4	98.0
Building Equipment Contractors	55.0	54.5	54.6	54.7	54.2	50.6	48.6	48.7	46.9	46.8	47.7	48.9	48.8
Manufacturing	299.7	298.5	293.4	291.3	287.2	277.6	274.7	272.3	270.7	271.1	274.6	275.6	273.5
Durable Goods	135.2	134.5	132.9	130.9	129.2	124.9	121.9	120.5	120.2	120.2	121.4	122.3	121.4
Fabricated Metal Product	26.3	25.9	25.8	25.8	25.7	25.2	25.1	25.1	25.1	25.2	25.4	25.1	25.1
Machinery Manufacturing	16.5	16.5	16.4	16.3	16.4	16.3	16.2	16.2	16.0	16.0	16.1	16.1	16.0
Computer and Electronic Products	30.7	30.6	30.6	30.6	30.4	30.1	30.0	30.0	30.0	30.0	30.3	30.3	30.2
Navig., Meas, Electromedical & Control Inst.	15.7	15.6	15.6	15.7	15.6	15.6	15.6	15.6	15.5	15.6	15.6	15.6	15.5
Transportation Equip. Mfg.	5.7	5.7	5.7	5.7	5.7	5.6	5.6	5.3	5.3	5.3	5.3	5.1	5.2
Miscellaneous Mfg.	20.3	20.3	20.3	20.2	20.0	19.2	19.2	19.5	19.5	19.6	19.7	19.7	19.6
Non-Durable Goods	164.5	164.0	160.5	160.4	158.0	152.7	152.8	151.8	150.5	150.9	153.2	153.3	152.1
Food Manufacturing	29.9	29.8	30.0	31.0	31.1	30.8	30.9	30.9	30.6	30.6	31.0	31.5	31.5
Paper Manufacturing	13.3	13.5	13.4	13.4	13.3	13.3	13.2	13.2	13.1	13.0	13.1	12.8	12.8
Printing and Related Support	21.1	21.0	20.8	20.8	20.7	20.4	20.2	20.2	20.1	20.0	19.9	19.6	19.7
Chemical Manufacturing	65.2	65.2	65.0	64.8	64.6	63.6	64.2	63.8	63.3	63.2	63.6	63.1	62.7
Basic Chemical Manufacturing	8.5	8.5	8.5	8.5	8.5	8.6	8.5	8.5	8.5	8.5	8.6	8.4	8.4
Pharmaceutical and Medicine	37.7	37.6	37.7	37.7	37.6	37.3	37.1	37.2	37.1	37.3	37.5	37.5	37.0
Plastics and Rubber Products	16.5	16.4	16.3	16.3	16.1	15.8	15.7	15.6	15.6	15.6	15.6	15.2	15.2
Service-Providing	3,580.3	3,574.4	3,597.2	3,597.1	3,589.5	3,493.9	3,485.9	3,498.0	3,509.3	3,535.9	3,570.5	3,526.8	3,506.4
Private Service-Providing	2,968.1	2,940.8	2,934.7	2,932.0	2,925.6	2,843.2	2,826.5	2,836.3	2,845.6	2,875.4	2,910.1	2,907.3	2,902.4
Trade, Transportation, & Utilities	859.4	859.2	858.4	870.4	872.6	843.9	836.3	837.8	835.6	840.8	849.1	835.5	836.1
Wholesale Trade	231.7	230.7	228.6	234.9	232.8	229.2	226.1	225.9	225.9	226.1	226.1	223.6	224.8
Merchant Wholesalers, Durable Goods	116.4	115.7	113.7	117.4	116.5	113.3	111.7	111.4	110.6	110.7	110.1	108.2	108.0
Professional & Comm. Equip., & Supplies	32.2	32.1	32.1	32.8	32.9	32.7	32.7	32.6	32.7	32.6	32.5	32.5	32.5
Grocery and Related Product - Nondurable Goods	29.0	28.9	28.9	28.9	28.8	28.5	28.5	28.5	28.5	28.8	29.0	29.0	29.0
Wholesale Electronic Markets, Agents and Brokers	31.2	31.1	30.9	32.6	33.1	33.6	32.8	32.8	33.0	33.1	33.2	33.3	33.9

See notes on page S-23. Shaded rows on pp. 24-27 indicate employment at the NAICS supersector level.

Employment Data

New Jersey Nonfarm Payroll Employment (000)

(not seasonally adjusted)

NAICS Industry	2008					2009							
	Aug	Sep	Oct	Nov	Dec	Jan	Feb	Mar	Apr	May	Jun	Jul	Aug
Retail Trade	459.5	453.6	454.6	460.8	466.7	446.0	442.0	444.7	445.0	449.3	455.5	454.0	453.8
Motor Vehicle and Parts Dealers	46.5	45.9	45.6	45.2	45.0	44.7	45.2	45.4	45.7	45.7	45.9	45.9	46.0
Automobile Dealers	33.6	33.3	33.1	32.8	32.5	32.2	32.3	32.3	32.3	32.1	32.2	32.1	32.2
Furniture and Home Furnishings Stores	17.8	17.6	17.9	19.0	19.6	18.1	17.5	17.4	17.1	17.0	16.7	16.5	16.4
Electronics and Appliance Stores	16.8	16.8	17.2	18.2	18.7	17.9	18.0	17.9	17.8	17.7	17.7	17.9	17.9
Building Mat. & Garden Equip. & Supp. Dlr.	34.0	33.5	33.5	33.1	32.6	31.5	31.7	31.7	32.9	34.1	34.0	33.3	32.6
Food and Beverage Stores	111.8	109.4	106.8	107.2	109.4	105.3	105.9	106.7	107.8	110.0	111.4	109.8	108.6
Health and Personal Care Stores	38.2	37.9	38.0	38.3	38.2	37.4	37.3	36.7	36.8	36.7	37.1	36.9	37.0
Clothing and Clothing Accessories Stores	60.0	58.2	60.7	66.0	67.9	60.8	58.6	58.4	59.5	60.5	61.8	60.3	60.4
Sporting Goods, Hobby, Book, & Music Stores	19.8	19.9	20.1	21.3	22.3	19.9	18.9	19.0	18.9	18.6	18.9	18.9	19.2
General Merchandise Stores	65.8	66.0	66.5	70.3	71.6	66.0	63.3	65.0	63.9	64.5	65.2	65.0	63.9
Department Stores	51.8	52.3	52.8	56.4	57.2	52.5	50.5	52.1	51.1	51.4	51.9	51.3	50.8
Transportation, Warehousing, and Utilities	168.2	174.9	175.2	174.7	173.1	168.7	168.2	167.2	164.7	165.4	167.5	157.9	157.5
Utilities	12.2	12.0	12.0	12.0	12.1	12.3	12.2	12.5	12.5	12.6	12.9	12.9	13.1
Elec.Pwr Gen., Transmission & Distribution	6.0	5.9	6.0	6.0	6.0	6.0	6.0	6.1	6.1	6.1	6.2	6.4	6.4
Natural Gas Distribution	3.9	3.8	3.8	3.8	3.8	3.9	3.9	4.0	4.0	4.0	4.1	4.1	4.1
Transportation and Warehousing	156.0	162.9	163.2	162.7	161.0	156.4	156.0	154.7	152.2	152.8	154.6	145.0	144.4
Air Transportation	18.4	18.3	18.1	18.2	18.3	18.3	18.3	18.5	18.5	18.6	18.6	18.6	18.6
Truck Transportation	36.7	36.6	35.7	35.6	34.7	32.5	33.2	33.1	33.6	33.5	33.9	32.7	32.8
General Freight Trucking	27.5	27.6	27.4	26.9	26.7	25.8	26.0	25.9	26.1	26.1	26.0	25.9	25.9
Transit and Ground Passenger Transportation	22.5	30.3	31.2	30.8	30.7	30.4	30.7	30.9	29.8	30.6	30.8	24.1	22.8
Support Activities for Transportation	22.0	21.8	21.9	21.8	21.9	21.6	21.6	21.7	21.4	21.3	21.5	21.5	21.5
Couriers and Messengers	23.5	23.3	22.9	23.9	26.8	22.5	22.6	22.6	22.3	22.4	22.5	22.7	23.4
Warehousing and Storage	27.9	27.8	28.0	28.2	28.2	28.1	28.0	28.0	27.7	27.7	27.7	27.8	27.9
Information	92.1	91.2	90.8	90.7	90.7	90.0	89.0	88.8	89.6	88.6	88.1	88.7	89.9
Publishing Industries (except Internet)	26.8	26.6	26.5	26.6	26.7	26.1	26.0	25.8	25.8	25.3	25.3	25.2	25.1
Telecommunications	40.4	40.2	40.2	40.3	40.3	40.3	40.3	40.2	39.8	39.7	39.8	39.4	39.3
Wired Telecommunications Carriers	31.9	31.7	31.8	32.0	32.0	32.1	32.3	32.5	32.2	32.3	32.4	32.2	31.9
Internet Serv. Prvdrs., Web Srch. Portals & D.P.S.	9.1	9.0	8.9	8.9	8.9	8.7	8.7	8.7	8.6	8.5	8.5	8.5	8.4
Financial Activities	272.1	267.7	264.0	259.7	260.8	257.9	256.6	257.5	257.7	258.1	259.1	259.1	258.0
Finance and Insurance	210.7	207.3	202.5	198.9	200.6	203.0	203.6	204.2	204.3	203.0	203.3	200.6	200.0
Credit Intermediation & Related Activities	72.6	71.6	70.3	67.9	68.1	67.6	68.0	68.1	68.0	67.6	68.4	68.2	67.9
Depository Credit Intermediation	51.2	50.6	50.4	50.6	50.8	50.8	50.9	51.2	51.1	51.0	51.4	51.2	51.1
Nondepository Credit Interditiion	16.0	15.5	15.2	14.9	14.4	13.6	13.3	13.0	13.0	13.0	12.9	13.1	13.0

See notes on page S-23. Shaded rows on pp. 24-27 indicate employment at the NAICS supersector level.

Employment Data

New Jersey Nonfarm Payroll Employment (000)

(not seasonally adjusted)

NAICS Industry	2008					2009							
	Aug	Sep	Oct	Nov	Dec	Jan	Feb	Mar	Apr	May	Jun	Jul	Aug
Securities, Commodity Contracts & Other	54.7	53.1	52.7	52.5	52.8	52.7	50.8	50.7	50.8	50.4	50.5	50.5	50.0
Scrty & Comdty Contracts Intermed & Brkrage	41.6	40.1	39.6	39.4	39.8	40.0	40.0	40.0	40.5	40.3	40.7	40.7	40.6
Ins. Carriers & Rel Activities	81.9	81.3	81.1	80.7	80.7	83.0	83.0	83.1	82.4	82.2	81.7	80.9	81.0
Insurance Carriers	51.1	50.7	50.5	50.5	50.5	49.9	49.9	50.3	50.0	49.7	49.3	49.1	49.3
Agencies, Brkrages, & other Ins. Rel. Activities	30.8	30.6	30.6	30.2	30.2	33.1	33.1	32.8	32.4	32.5	32.4	31.8	31.7
Real Estate/Rental & Leasing	61.4	60.4	61.5	60.8	60.2	54.9	53.0	53.3	53.4	55.1	55.8	58.5	58.0
Real Estate	41.9	41.1	42.7	42.1	41.8	37.1	35.9	36.6	36.6	37.6	37.9	40.2	40.1
Rental and Leasing Svcs.	18.5	18.3	18.2	18.2	18.1	17.3	17.2	17.1	17.4	17.5	17.9	17.7	17.2
Professional & Business Svcs.	624.9	618.4	613.4	609.2	599.9	574.1	566.6	570.4	575.6	579.3	585.1	591.4	594.6
Professional, Sci., & Tech. Svcs.	291.1	287.7	291.7	290.3	289.1	279.2	278.8	279.7	276.2	272.1	275.7	277.3	275.8
Legal Services	41.1	40.6	40.1	39.7	39.3	38.4	39.0	39.2	39.1	38.8	39.7	39.4	39.1
Accounting/Tax Prep/Bookkeep/ Payroll Services	36.0	35.3	35.4	35.8	35.0	34.3	35.5	34.8	35.4	32.5	32.5	33.4	33.3
Architectural, Engineering & Related Services	41.4	40.7	41.8	41.4	40.4	38.2	37.9	37.2	38.3	38.7	40.1	39.9	40.3
Computer Systems Design & Related Services	64.0	63.4	64.4	62.7	63.6	58.8	58.5	58.1	55.9	55.4	56.1	56.9	56.3
Management, Sci & Tech Consulting Services	36.9	36.1	36.1	36.7	37.1	38.1	37.4	39.4	36.7	36.8	37.3	37.7	37.1
Scientific Research & Development Services	31.4	31.2	31.1	31.0	31.1	30.9	30.8	31.0	30.9	31.1	31.4	31.5	31.4
Advertising and Related Services	16.4	16.4	16.5	16.6	16.7	16.2	16.3	16.4	16.5	16.4	16.4	16.3	16.1
Management of Companies and Enterprises	75.4	74.8	74.2	74.1	74.3	75.1	74.7	74.5	74.6	74.4	75.1	75.3	76.1
Adm/Support Waste Mgt/ Remediation Services	258.4	255.9	247.5	244.8	236.5	219.8	213.1	216.2	224.8	232.5	234.3	238.8	242.7
Employment Services	91.7	91.7	88.3	88.0	84.0	73.1	69.0	70.1	70.0	74.2	71.9	75.2	80.0
Business Support Services	17.1	17.3	17.1	17.5	17.9	17.4	17.6	17.8	17.8	17.7	17.9	17.5	17.3
Investigation & Security Svcs.	28.3	28.1	28.1	28.2	28.2	28.1	28.0	28.0	28.0	28.1	28.2	28.0	28.0
Svcs. to Buildings & Dwellings	71.3	69.4	65.9	62.7	56.0	52.6	48.6	51.7	58.2	62.2	65.7	67.9	68.3
Educational & Health Services	582.1	587.6	601.5	603.6	604.4	595.3	598.6	600.5	601.3	601.7	599.4	589.2	584.6
Educational Services	83.1	88.4	96.8	96.4	97.4	92.6	97.1	97.9	96.5	95.4	91.6	85.2	82.7
Elementary and Secondary Schools	31.9	35.6	36.6	36.9	36.5	36.2	36.6	36.8	36.6	37.0	36.6	32.1	30.6
Colleges, Universities, and Professional Schools	26.2	29.0	32.1	31.6	31.9	27.5	31.0	31.8	32.0	31.4	28.5	27.4	27.7
Health Care and Social Assistance	499.0	499.2	504.7	507.2	507.0	502.7	501.5	502.6	504.8	506.3	507.8	504.0	501.9
Ambulatory Health Care Svcs.	183.1	183.2	185.2	186.1	186.3	183.4	184.7	185.6	186.7	188.2	190.0	190.7	189.9
Offices of Physicians	69.1	68.9	69.2	69.4	69.1	68.7	69.1	70.5	70.9	71.1	71.1	71.5	71.2
Offices of Dentists	27.9	27.9	27.7	28.0	28.0	27.4	27.7	27.6	27.8	27.9	27.4	27.8	27.8
Home Health Care Services	30.5	30.8	30.9	30.9	31.3	30.1	29.9	30.3	30.3	30.7	31.0	31.0	31.0

See notes on page S-23. Shaded rows on pp. 24-27 indicate employment at the NAICS supersector level.

Employment Data
New Jersey Nonfarm Payroll Employment (000)
 (not seasonally adjusted)

NAICS Industry	2008					2009							
	Aug	Sep	Oct	Nov	Dec	Jan	Feb	Mar	Apr	May	Jun	Jul	Aug
Hospitals	156.6	156.3	156.6	156.6	155.8	155.0	153.7	152.9	153.5	152.9	153.8	155.2	153.9
Nursing and Residential Care Facilities	84.7	84.2	84.8	85.1	84.7	83.6	83.3	83.8	84.4	84.6	84.5	84.9	85.1
Nursing Care Facilities	48.8	48.5	48.6	48.8	48.8	48.7	48.6	48.8	49.0	49.1	49.1	49.5	49.5
Community Care Facilities for the Elderly	18.4	18.3	18.3	18.4	18.5	18.5	18.6	18.7	18.4	18.6	18.7	18.8	18.7
Social Assistance	74.6	75.5	78.1	79.4	80.2	80.7	79.8	80.3	80.2	80.6	79.5	73.2	73.0
Child Day Care Services	34.6	36.7	37.6	37.7	38.0	37.8	37.9	38.2	38.2	38.5	38.2	35.4	34.8
Leisure and Hospitality	369.8	352.3	340.9	337.0	335.1	321.5	318.1	320.2	323.2	341.6	358.0	371.3	367.6
Arts, Entertainment, and Recreation	69.2	56.8	52.8	50.8	50.0	45.4	45.5	46.6	48.2	53.6	60.7	72.8	70.3
Amusement, Gambling & Recreation Industries	57.2	45.3	41.3	39.7	39.3	36.1	36.2	37.2	38.3	43.7	49.7	62.5	60.8
Accommodation and Food Services	300.6	295.5	288.1	286.2	285.1	276.1	272.6	273.6	275.0	288.0	297.3	298.5	297.3
Accommodation	71.7	68.1	65.6	63.3	63.0	61.5	60.7	60.1	59.9	61.5	62.7	66.4	66.6
Casino Hotels	39.5	39.2	37.9	37.2	36.2	35.4	34.7	34.5	34.0	34.5	35.0	36.7	36.7
Food Services and Drinking Places	228.9	227.4	222.5	222.9	222.1	214.6	211.9	213.5	215.1	226.5	234.6	232.1	230.7
Full-Service Restaurants	107.8	102.2	98.8	96.7	97.6	95.3	93.3	93.9	95.5	101.6	108.3	112.9	112.1
Limited-Service Eating Places	91.8	87.3	86.1	86.3	84.6	83.2	82.1	83.1	82.8	86.2	87.5	86.2	85.8
Special Food Services	19.2	28.5	28.8	31.1	31.0	27.6	28.0	28.0	28.2	29.7	29.2	23.3	23.2
Drinking Places (Alcoholic Beverages)	10.1	9.4	8.8	8.8	8.9	8.5	8.5	8.5	8.6	9.0	9.6	9.7	9.6
Other Services	167.7	164.4	165.7	161.4	162.1	160.5	161.3	161.1	162.6	165.3	171.3	172.1	171.6
Repair and Maintenance	36.0	35.9	34.7	34.7	34.4	34.6	34.3	34.4	34.2	34.1	33.8	33.7	33.5
Automotive Repair and Maintenance	25.9	25.8	24.9	24.9	23.8	24.1	23.4	23.4	23.3	23.6	23.3	23.2	23.1
Personal and Laundry Services	50.6	50.7	51.4	48.5	49.5	49.9	49.2	49.2	50.5	51.9	54.4	54.3	53.9
Personal Care Services	30.1	30.4	30.2	30.2	30.4	30.1	29.9	30.2	30.6	30.9	31.2	30.7	30.6
Religious, Grantmaking, Civic, Professional & Similar Orgs.	81.1	77.8	79.6	78.2	78.2	76.0	77.8	77.5	77.9	79.3	83.1	84.1	84.2
Government	612.2	633.6	662.5	665.1	663.9	650.7	659.4	661.7	663.7	660.5	660.4	619.5	604.0
Federal Government	60.3	59.6	59.8	58.6	59.1	58.9	58.2	58.2	60.5	60.7	59.3	59.9	59.2
Other Federal Government	18.1	17.8	17.7	17.7	17.8	17.6	17.6	17.7	19.6	20.6	18.8	18.6	18.7
Department of Defense	14.3	14.0	14.2	13.4	13.5	13.6	13.6	13.6	13.7	13.7	14.2	14.6	14.6
U.S. Postal Service	27.9	27.8	27.9	27.5	27.8	27.7	27.0	26.9	27.2	26.4	26.3	26.7	25.9
State Government	146.2	150.5	154.3	153.2	150.4	145.9	149.8	150.4	150.1	146.6	143.8	143.5	141.7
State Government Education	44.0	48.8	52.5	52.2	50.4	45.0	49.1	49.3	49.5	45.7	43.0	43.1	41.9
State Government Hospitals	11.9	11.9	12.1	12.1	12.2	12.2	12.2	12.2	12.2	12.2	12.2	12.2	12.2
Other State Government	90.3	89.8	89.7	88.9	87.8	88.7	88.5	88.9	88.4	88.7	88.6	88.2	87.6
Exec./Leg./Judicial *	77.4	77.1	77.1	76.9	76.8	76.8	76.9	76.9	76.6	76.3	76.5	76.0	75.6
Local Government	405.7	423.5	448.4	453.3	454.4	445.9	451.4	453.1	453.1	453.2	457.3	416.1	403.1
Local Government Education	220.9	250.1	277.1	282.7	283.9	276.8	282.5	285.2	285.2	283.6	283.2	230.4	219.2
Other Local Government	184.8	173.4	171.3	170.6	170.5	169.1	168.9	167.9	167.9	169.6	174.1	185.7	183.9

See notes on page S-23. Shaded rows on pp. 24-27 indicate employment at the NAICS supersector level.

Hours and Earnings Data

Production/Non-supervisory Workers in New Jersey

NAICS Industry	2008					2009							
	Aug	Sep	Oct	Nov	Dec	Jan	Feb	Mar	Apr	May	Jun	Jul	Aug
Average Weekly Hours of Production / Non-supervisory Workers¹													
Manufacturing (production)	41.6	41.5	40.8	41.1	41.5	41.2	41.2	41.3	40.6	41.2	41.4	41.5	41.4
Durable Goods	42.2	41.8	40.9	41.5	40.9	40.8	41.0	41.0	40.6	40.6	41.2	41.1	40.8
Nondurable Goods	41.0	41.3	40.7	40.8	42.1	41.6	41.4	41.5	40.7	41.7	41.5	41.8	41.9
Information⁴	34.3	34.7	34.6	34.8	34.9	34.4	34.7	34.3	34.4	34.8	34.3	35.0	34.6
Average Hourly Gross Dollar Earnings²													
Manufacturing (production)	17.93	17.99	17.73	17.89	18.37	18.39	18.45	18.52	18.60	18.51	18.53	18.31	18.25
Durable Goods	19.88	19.93	20.17	20.25	21.10	21.10	21.23	21.33	21.32	21.30	21.17	20.96	20.92
Nondurable Goods	16.18	16.29	15.60	15.81	16.10	16.10	16.14	16.12	16.24	16.18	16.29	16.02	16.00
Information⁴	31.52	31.18	30.06	29.86	29.13	28.86	28.60	29.16	28.27	27.97	27.72	27.16	27.29
Average Weekly Gross Dollar Earnings³													
Manufacturing (production)	745.89	746.59	723.38	735.28	762.36	757.67	760.14	764.88	755.16	762.61	767.14	759.87	755.55
Durable Goods	838.94	833.07	824.95	840.38	862.99	860.88	870.43	874.53	865.59	864.78	872.20	861.46	853.54
Nondurable Goods	663.38	672.78	634.92	645.05	677.81	669.76	668.20	668.98	660.97	674.71	676.04	669.64	670.40
Information⁴	1,081.14	1,081.95	1,040.08	1,039.13	1,016.64	992.78	992.42	1,000.19	972.49	973.36	950.80	950.60	944.23

* Eight manufacturing production series were deleted because these series failed to meet the criteria established by the Bureau of Labor Statistics and will no longer be published.

- (1) Average hours worked or paid are affected by labor turnover, changes in overtime hours and part-time employment.
- (2) Hourly earnings include paid holidays, vacation and sick leave. They are affected by changes in workforce composition and in wage rates.
- (3) Weekly earnings are affected by premium pay, shift differentials, piecework and incentive payments, length of workweek and other factors.
- (4) Non-supervisory workers. The Information Supersector includes the Publishing Industries, Telecommunications, and Internet Service Providers, Web Search Portal, and Data Processing Service Sectors.

Comparative Trends

US and New Jersey Civilian Labor Force Trends 1983-2009 (000)

Date	Labor Force		Employment		Unemployment Volume		Unemployment Rate (%)	
	US	NJ	US	NJ	US	NJ	US	NJ
Annual Averages: 1983-2008								
1983	111,550	3,673.0	100,834	3,385.0	10,717	288.0	9.6	7.8
1984	113,544	3,825.0	105,005	3,589.0	8,539	236.0	7.5	6.2
1985	115,461	3,839.0	107,150	3,621.0	8,312	217.0	7.2	5.7
1986	117,834	3,908.0	109,597	3,712.0	8,237	197.0	7.0	5.0
1987	119,865	3,966.0	112,440	3,806.0	7,425	160.0	6.2	4.0
1988	121,669	3,975.0	114,968	3,824.0	6,701	151.0	5.5	3.8
1989	123,869	3,989.0	117,342	3,826.0	6,528	163.0	5.3	4.1
1990	125,840	4,072.5	118,793	3,865.0	7,047	207.5	5.6	5.1
1991	126,346	4,050.4	117,718	3,776.6	8,628	273.7	6.8	6.8
1992	128,105	4,051.9	118,492	3,709.5	9,613	342.4	7.5	8.4
1993	129,200	4,034.6	120,259	3,727.3	8,940	307.3	6.9	7.6
1994	131,056	4,067.5	123,060	3,790.0	7,996	277.5	6.1	6.8
1995	132,304	4,111.8	124,900	3,846.3	7,404	265.5	5.6	6.5
1996	133,943	4,184.1	126,708	3,925.8	7,236	258.3	5.4	6.2
1997	136,297	4,257.4	129,558	4,031.0	6,739	226.4	4.9	5.3
1998	137,673	4,242.4	131,463	4,047.1	6,210	195.3	4.5	4.6
1999	139,368	4,284.6	133,488	4,092.7	5,880	191.8	4.2	4.5
2000	142,583	4,287.8	136,891	4,130.3	5,692	157.5	4.0	3.7
2001	143,734	4,302.3	136,933	4,117.5	6,801	184.8	4.7	4.3
2002	144,863	4,370.8	136,485	4,117.3	8,378	253.5	5.8	5.8
2003	146,510	4,363.9	137,736	4,108.4	8,774	255.5	6.0	5.9
2004	147,401	4,358.9	139,252	4,144.2	8,149	214.7	5.5	4.9
2005	149,320	4,416.1	141,730	4,218.5	7,591	197.6	5.1	4.5
2006	151,428	4,477.5	144,427	4,269.6	7,001	207.9	4.6	4.6
2007	153,124	4,462.3	146,047	4,271.7	7,078	190.6	4.6	4.3
2008	154,287	4,496.7	145,362	4,251.2	8,924	245.5	5.8	5.5
2008 Monthly Data: 2008-2009 (Seasonally Adjusted)*								
Jan	153,873	4,478.7	146,317	4,272.3	7,555	206.4	4.9	4.6
Feb	153,498	4,483.9	146,075	4,272.1	7,423	211.8	4.8	4.7
Mar	153,843	4,485.5	146,023	4,268.9	7,820	216.6	5.1	4.8
Apr	153,932	4,487.7	146,257	4,265.5	7,675	222.2	5.0	5.0
May	154,510	4,491.3	145,974	4,261.2	8,536	230.1	5.5	5.1
Jun	154,400	4,492.6	145,738	4,256.9	8,662	235.7	5.6	5.2
Jul	154,506	4,497.8	145,596	4,252.6	8,910	245.2	5.8	5.5
Aug	154,823	4,502.1	145,273	4,247.3	9,550	254.8	6.2	5.7
Sep	154,621	4,502.5	145,029	4,241.9	9,592	260.6	6.2	5.8
Oct	154,878	4,507.4	144,657	4,235.6	10,221	271.8	6.6	6.0
Nov	154,620	4,510.4	144,144	4,224.9	10,476	285.5	6.8	6.3
Dec	154,447	4,520.8	143,338	4,215.1	11,108	305.7	7.2	6.8
2009								
Jan	153,716	4,503.0	142,099	4,172.5	11,616	330.5	7.6	7.3
Feb	154,214	4,514.6	141,748	4,144.6	12,467	370.0	8.1	8.2
Mar	154,048	4,540.6	140,887	4,163.8	13,161	376.8	8.5	8.3
Apr	154,731	4,572.4	141,007	4,188.0	13,724	384.4	8.9	8.4
May	155,081	4,560.4	140,570	4,160.3	14,511	400.0	9.4	8.8
Jun	154,926	4,550.5	140,196	4,130.9	14,729	419.6	9.5	9.2
Jul	154,504	4,561.8	140,041	4,138.6	14,462	423.1	9.4	9.3
Aug	154,577	4,542.7	139,649	4,104.0	14,928	438.7	9.7	9.7
Sep								
Oct								
Nov								
Dec								

* New Jersey monthly data are based on a different estimating procedure. Monthly data have been revised to incorporate updated seasonal adjustment factors which reflect the 2008 experience.

Characteristics of New Jersey's Unemployed (000)

	August 2009	July 2009	August 2008	Percent Change From Month Ago	Year Ago
Total Insured Unemployed *	196.7	207.3	132.9	-5.1	48.0
Total Insured Unemployed	186.7	195.7	126.0	-4.6	48.2
By Gender					
Male	118.2	122.9	74.3	-3.9	59.0
Female	83.1	86.8	56.4	-4.3	47.4
By Race					
White	114.9	121.5	76.2	-5.4	50.8
Black	34.8	36.0	26.4	-3.2	32.2
Asian	7.4	7.8	3.9	-5.3	92.6
Other	2.0	2.0	1.3	-3.8	51.4
Chose not To Answer	29.3	31.0	19.0	-5.4	54.6
By Ethnicity					
Hispanic	36.8	39.0	25.1	-5.6	46.7
Not Hispanic	133.2	139.8	92.2	-4.7	44.4
Chose not to Answer	22.2	23.1	11.1	-4.1	99.3
By Age of Claimant					
Under 25	19.3	19.9	11.9	-3.2	61.9
25 through 34 years	44.3	46.0	29.8	-3.6	48.9
35 through 44 years	42.4	44.7	29.8	-5.1	42.4
45 through 54 years	45.6	47.5	30.8	-4.0	48.2
55 through 64 years	29.0	30.5	19.1	-4.9	52.3
65 years and over	10.2	10.7	7.3	-4.3	39.8
By Duration of Unemployment					
1 to 2 weeks	26.7	22.4	21.4	19.0	24.8
3 to 4 weeks	18.4	23.6	15.6	-22.2	17.9
5 to 14 weeks	71.3	84.1	52.7	-15.2	35.2
15 weeks and over	74.4	79.4	38.1	-6.3	95.3
By Industry					
Goods Producing	40.8	43.3	25.8	-5.8	58.2
Construction	21.5	22.0	14.7	-2.4	46.3
Manufacturing	18.2	20.3	10.4	-9.9	75.2
Service Providing	147.8	155.2	100.5	-4.8	47.1
Trade, Transportation, Utilities	44.0	46.3	27.9	-4.9	57.9
Wholesale Trade	11.3	12.2	6.8	-7.7	65.0
Retail Trade	22.6	23.8	14.2	-5.0	58.8
Transportation & Warehousing	10.0	10.1	6.7	-1.5	49.0
Financial Activities	11.3	11.9	7.9	-5.5	42.4
Professional & Business Services	35.3	37.1	21.6	-4.8	63.4
Educational and Health Services	18.9	18.8	12.4	0.6	52.0
Leisure and Hospitality	15.4	15.8	11.5	-2.3	33.8
Other Services	4.6	4.8	2.9	-4.4	56.8
Government	2.3	2.3	2.0	0.2	14.7

Notes: Totals may not add due to seasonal adjustment, rounding and differences in the availability of data.
 * Not seasonally adjusted

Adjustment of Data

Seasonal Adjustment. All tables/charts, unless otherwise specified, contain data that are seasonally adjusted using the **X-12 ARIMA** (Auto-Regressive Integrated Moving Average) method of seasonal adjustment developed by Statistics Canada.

The **X-12** procedure was used in a “two-step” process. One set of factors was generated for benchmarked estimates, based on absolute or universe counts of employment determined through Unemployment Insurance records. These factors were used to seasonally adjust historical, universe-based data through September 2007. A second set of factors was generated using the record of sample-based estimates, and applied to reprojected sample-based estimates for the last quarter of 2007 and sample-based estimates developed month by month in 2008.

Annual Revision and Internet Access

Annual revisions of the data series in *Economic Indicators* normally incorporate:

- (1) the latest benchmark — 2008 for the Resident Labor Force Indicators (Series 1-6) and 2008 for Establishment Employment Indicators (Series 7-16).
- (2) new seasonal adjustment factors, which usually affect at least five years of seasonally adjusted data, or the period from January 2004 forward.

Internet Access: Available on the Labor Planning & Analysis (LPA) Web site, <http://lwd.dol.state.nj.us/labor/lpa>, are:

- (1) the current month's *Economic Indicators* issue.
- (2) historical series when available, January 1976 to December 2008. This includes the latest annual revisions to unadjusted nonfarm data (January 2006 to December 2008) and seasonal adjustment revisions (January 2004 to December 2008). Because revisions can affect various multi-year periods of original and seasonally adjusted data, it would be incorrect to generate a historic time series for *Economic Indicators* data by tying together series from old issues. For example, seasonally adjusted data from January 2005 to December 2009 are subject to change during the next annual revision cycle.

General Notes

Annual Averages. On p. S-20 are the annual averages of the of the data series for recent years to be used as a benchmark for evaluating current monthly data.

Charts. Unless otherwise noted, all graphs were developed with seasonally adjusted data.

Moving Averages. Series where the monthly data vary erratically have been plotted with moving averages (thick line) and nonaveraged data (thin line) superimposed.

Scales. The scale of each series is determined by the volume and trend of the data series. Caution should be exercised in making comparisons among charts of different scales.

Shaded Columns. Shaded areas indicate periods of general national contraction as identified by the National Bureau of Economic Research (NBER). The July 1990-March 1991 and the March 2001-November 2001 national recessions are shown in the graphs for Series 1-27.

Tables. Revised data are indicated by an “R” after the entry.

Statistical Section Notes (cont.)

Data Sources for Economic Time Series 1-27

No.	Title	Data Source
1	Civilian Labor Force	NJ Department of Labor and Workforce Development, Division of Labor Market and Demographic Research
2	Resident Employment	
3	Unemployment	
4	Labor Force Participation Rate	
5	Employment/Population Ratio	
6	Unemployment Rate	
7	Nonfarm Payroll Employment	
8	Private Sector Nonfarm Payroll Employment	
9	Construction Payroll Employment	
10	Manufacturing Payroll Employment	
11	Trade, Transportation and Utilities Payroll Employment	
12	Information Payroll Employment	
13	Financial Activities Payroll Employment	
14	Professional and Business Services Payroll Employment	
15	Education and Health Services Payroll Employment	
16	Leisure and Hospitality Payroll Employment	
17	CPI for All Urban Consumers (CPI-U)	US Bureau of Labor Statistics
18	Consumer Confidence Index for the United States	The Conference Board
19	Total Private Dwelling Units Auth. by Bldg. Permits	US Bureau of the Census, Manufacturing and Construction Division
20	Priv. Single-Fam. Dwelling Units Auth. by Bldg. Permits	
21	Priv. Multi-Fam. Dwelling Units Auth. by Bldg. Permits	
22	Total New Vehicle Registrations	R.L. Polk and Company
23	New Passenger Car Registrations	
24	New Light Truck/Van Registrations	
25	Weeks Claimed and Insured Unemployment Rate	NJ Department of Labor and Workforce Development, Division of Program Planning, Analysis and Evaluation
26	Initial Claims - Weekly Averages	
27	Unemployment Insurance Exhaustions	

Data Sources for Economic Time Series 1-27

1-6 **Resident Labor Force Indicators** are produced using a modeling procedure based on regression techniques, that allows for the construction of error ranges. This procedure includes data variables from the NJ Department of Labor & Workforce Development's monthly Current Employment Statistics (CES) survey, unemployment insurance claims data and responses from the US Bureau of Labor Statistics' Current Population Survey (CPS) of 1,500 households in New Jersey. A new method was introduced effective with January 2005 estimates. Data are available monthly back to 1976.

Beginning with 1990, data incorporate 2000 census-based population controls as well as improved estimates of immigration, emigration, births and deaths for the state and are not directly comparable to earlier figures.

The **Labor Force Participation Rate** and the **Employment/Population Ratio** (Series 4 and 5) are expressed as percentages of the civilian noninstitutional population aged 16 years and over.

7-16 The **Establishment Employment Indicators** are generated from the monthly CES survey of employers on the number of persons who worked or received pay for any part of the pay period including the 12th of the month.

Data reflect March 2008 benchmarks.

Statistical Section Notes (cont.)

Seasonally adjusted data for Series 7-16 have been revised back to January 2004.
Not seasonally adjusted data have been revised back to 2006.

Private Sector Nonfarm Payroll Employment (Series 8) is computed by subtracting government employment from total nonfarm employment.

Standard errors have been computed to estimate the variance of total private sector employment and for all supersector series statewide, as well as for total private sector employment for Metropolitan Statistical Areas. More detailed information is available at lwd.dol.state.nj.us/labor/lpa under "Employment & Wages". Please see the technical note on sample variance.

- 17 The **Consumer Price Index for All Urban Consumers (CPI-U)** is a measure of the average change over time in the prices paid by all urban consumers (excluding military personnel and persons in institutions) for a fixed market basket of consumer goods and services. The month-to-month change in the CPI is a measure of inflation. Beginning with January 2007, monthly data is reported out to three decimal points.

The **CPI-U** represents approximately 87% of the total population. The **US CPI-U** is the US City Average. The **US CPI-U** and **Metro Area CPI-U** (see definitions below) are not seasonally adjusted.

The CPI does not measure the relative cost of living between areas. There is no "New Jersey CPI". The division of New Jersey's 21 counties between two metropolitan areas for which CPIs are calculated is defined below.

Internet: US Bureau of Labor Statistics Web site may be accessed at <http://www.bls.gov/data/top20.htm> for all regional and national CPI data.

Metro Area definitions:

"NY" designates the *New York-Northern New Jersey - Long Island, NY-NJ-CT-PA area*. In New Jersey this includes Bergen, Essex, Hudson, Hunterdon, Mercer, Middlesex, Monmouth, Morris, Ocean, Passaic, Somerset, Sussex, Union and Warren counties. In New York, it includes New York City (5 counties), Dutchess, Nassau, Orange, Putnam, Rockland, Suffolk and Westchester counties. In Connecticut, it includes Fairfield and New Haven counties, plus parts of Litchfield and Middlesex counties. In Pennsylvania, it includes Pike County. Data are published monthly.

"PA" designates the *Philadelphia-Wilmington-Atlantic City, PA-NJ-DE-MD area*. In New Jersey this includes Atlantic, Burlington, Camden, Cape may, Cumberland, Gloucester, and Salem Counties. In Pennsylvania, it includes Bucks, Chester, Delaware, Montgomery and Philadelphia counties. In Delaware, it includes New Castle County, and in Maryland, Cecil County. Data are published bi-monthly.

- 18 **Consumer Confidence Index (CCI), (US 1985=100)** is based on a representative, random sample of 5,000 US households surveyed monthly by TNS for the Conference Board. The index represents consumers' perceptions of the present general economy, their own financial conditions as well as their short-term (six months) outlook. Economists use the CCI as a leading indicator for consumer spending.

Statistical Section Notes (cont.)

19-21 The **Residential Building Permits Indicators** are compiled by the US Bureau of the Census, Manufacturing and Construction Division as of the thirteenth workday of the following month. Data are collected for all permit-issuing places in the state through a monthly survey of local construction officials. If data are not received for a particular place for that month, the data are imputed. The Census Bureau conducts an annual follow-up to obtain as much data as possible for places for which the data were imputed during the year; these data are then considered to be **FINAL MONTHLY FIGURES**. (Final statewide totals used to produce the annual averages on p. S-20 also include “undistributed” units.) Data beginning January 1998 contain revisions allocated back to prior months and are directly comparable to over-the-year changes shown on the **New Jersey’s Economy by the Numbers** table.

Total Private Dwelling Units Authorized by Building Permits (Series 19) data are the sum of single-family, two-family, three-or-four-family, and five-or-more-family dwelling units. Public housing units are not included in the series and represent a tiny fraction of the total.

Private Multi-Family (5+ units) Authorized by Building Permits (Series 21) include all multi-family structures with five or more units, except those in public housing. Data do not exhibit a stable seasonal pattern and are, therefore, not appropriate for seasonal adjustment.

22-24 These series on **New Passenger Car & New Light Truck/Van Registrations** present data only on total new passenger cars and total light truck/vans (in the gross vehicle weight class 0-10,000 lbs.) registered in New Jersey, regardless of the state in which the sales occur. Included are both domestically produced and imported vehicles. Excluded are all federal government registrations. Monthly data for current and prior-year are subject to revision.

Because of unemployment insurance (UI) coverage and other law changes affecting eligibility for benefits, data on unemployment insurance claims (Series 25-27) may not be directly comparable between years.

25 **Weeks Claimed (Weekly Average)** is computed by dividing the total number of weeks claimed (intra-state and interstate agent under the Regular State UI Program only) in the month by the number of weeks in the month.

The **Insured Unemployment Rate (IUR)** is the seasonally adjusted weekly average of weeks claimed (intrastate and interstate agent claims under the Regular State UI Program only), which is a proxy for a count of claimants, as a percent of employment covered by unemployment insurance.

26 The **Initial Claims Weekly Average** represents intrastate and interstate agent claims under the Regular State UI program only.

27 **Unemployment Insurance Exhaustions** are for the Regular State UI Program only.