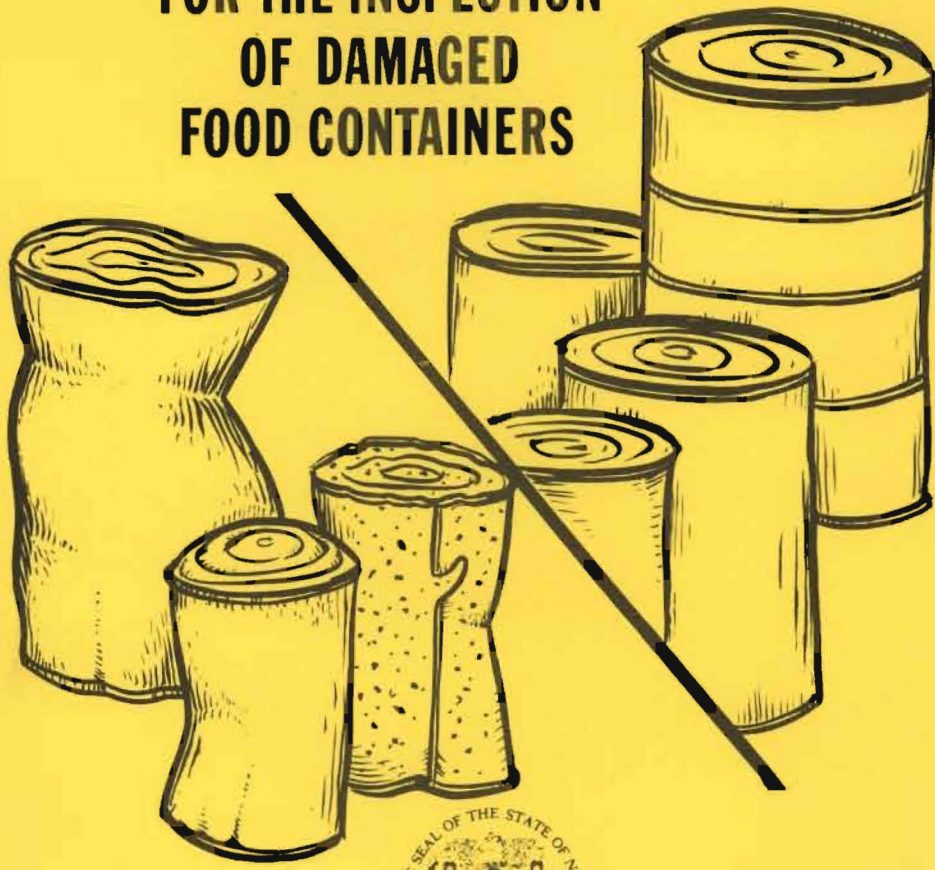


PICTORIAL GUIDE FOR THE INSPECTION OF DAMAGED FOOD CONTAINERS



NJSDH

NEW JERSEY STATE DEPARTMENT OF HEALTH
FOOD AND MILK PROGRAM
CONSUMER HEALTH SERVICES

FOREWARD

This pictorial guide has been prepared by the Food and Milk Program of the New Jersey State Department of Health as an aid to local health departments, industry and consumers in determining the usability of food containers which have been subjected to abuse, accident or conditions resulting from fire, flood or other manmade or natural disasters.

We wish to acknowledge the National Food Processors Association and the United State Department of Agriculture for use of many of the photographs utilized in this guide.

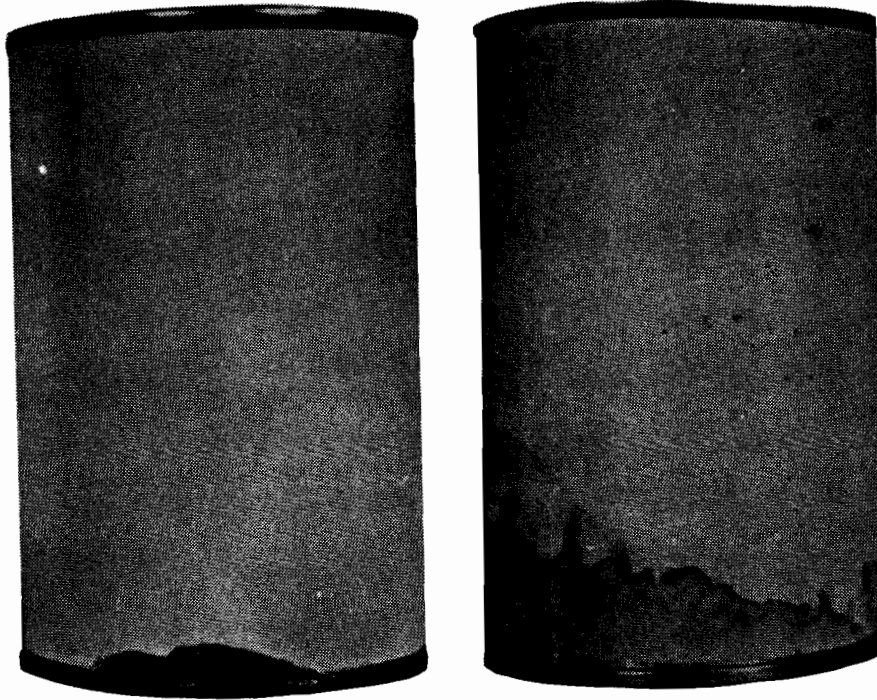
This guide also has been developed to correspond to the requirements contained in N.J.A.C. 8:21-11.2 and 8:21-11.3 and will serve to clarify some of the terminology used in the regulations.

**DAMAGED
FOOD CONTAINERS
UNSUITABLE
FOR
SALE**



Bulging Containers

Cans or jars with bulged ends, or containers which are swells, springers, or flippers; this includes cans with bulged lids caused by severe dents. Beer or carbonated beverage containers may appear to be slightly bulged due to naturally occurring gas. (8:21-11.2 a)



Leaking Containers

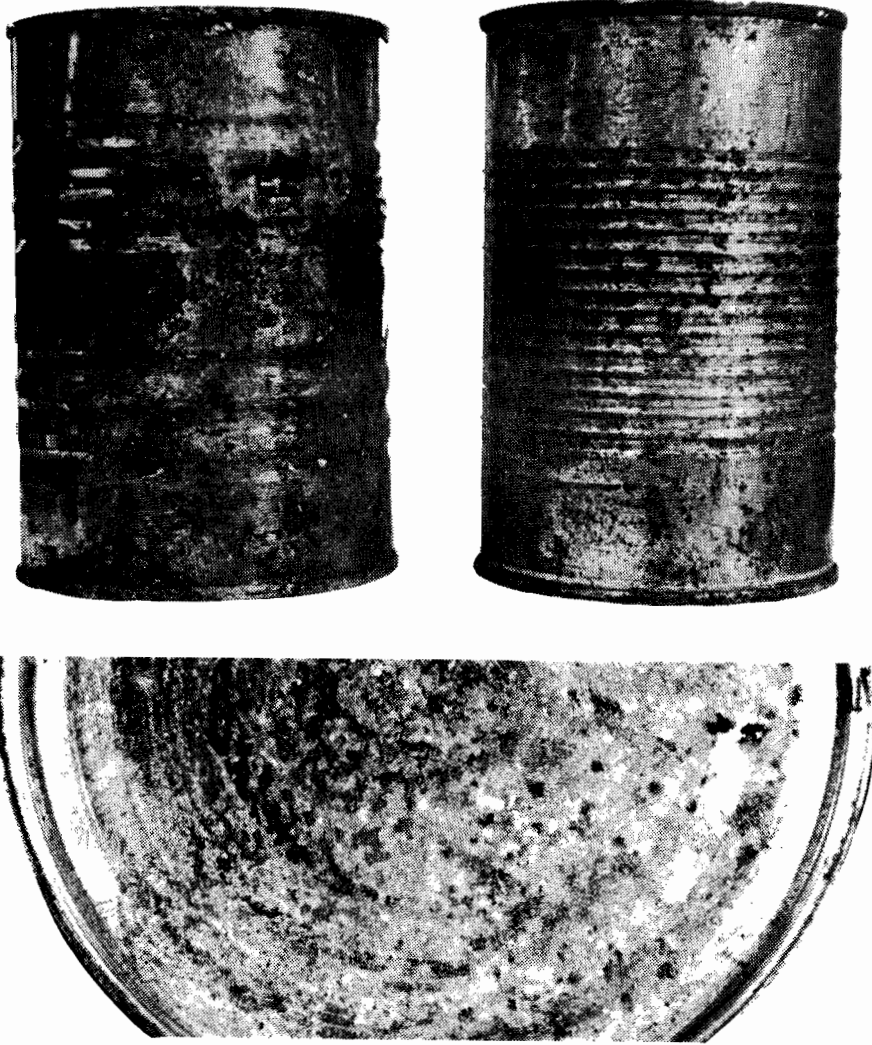
Sealed cans, jars or containers with visible evidence of product leakage. (8:21-11.2 b)



Fractured Containers

Any pull top container which contains obvious fractures of the lip scorelines or glass containers showing any evidence of loosening or opening of the closure or other condition which affects the integrity of the seal. (8:21-11.2 c)

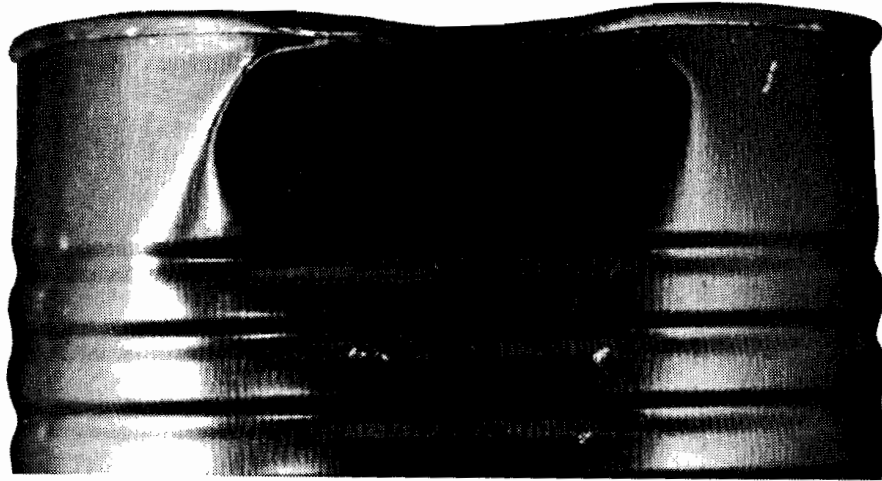
UNSUITABLE FOR SALE



Severely Rusted or Pitted Containers

A badly rusted and/or severely pitted container which cannot be properly cleaned and reconditioned by a moderate buffing procedure. (8:21-11.2 d)

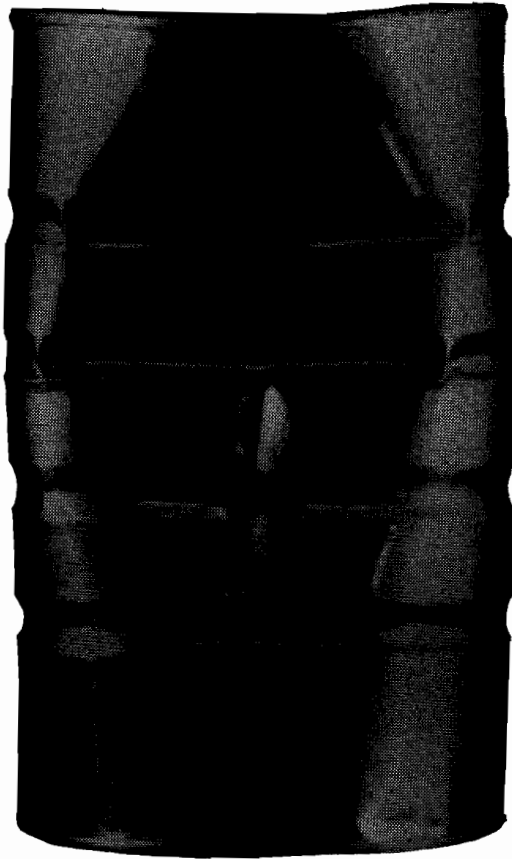
UNSUITABLE FOR SALE



Severe Dent

Any severely dented can in which the end seam is pulled out of position to such an extent that the malposition is readily noticeable and there is evidence that the end seam may have been placed under tension.
(8:21-11.2 e)

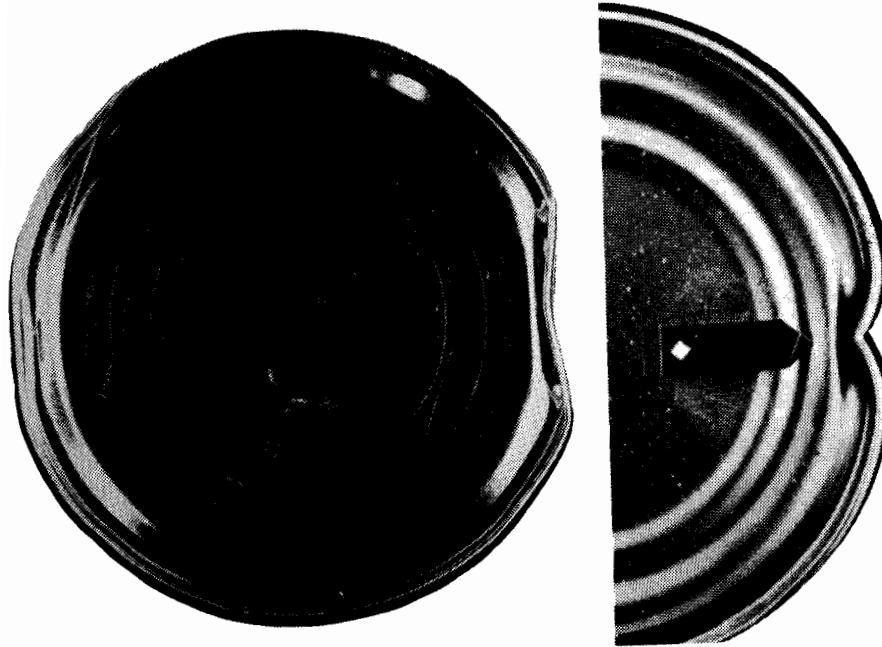
UNSUITABLE FOR SALE



Severe Dent

Any severely dented can which contains a very deep, sharp, angular dent with very acute crimping of the body wall. (8:21-11.2 f)

UNSUITABLE FOR SALE



Severe Dent

Any severely dented can in which the end seam has been forced out of position to such an extent that the countersink has been buckled which materially affects or is likely to affect the safety and usability of the container. (8:21-11.2 g)



Improper Closure

Any container in which there is an improper end seam closure whereby a portion of the cover or body flange has not been tucked properly into the end seam.
(8:21-11.2 h)

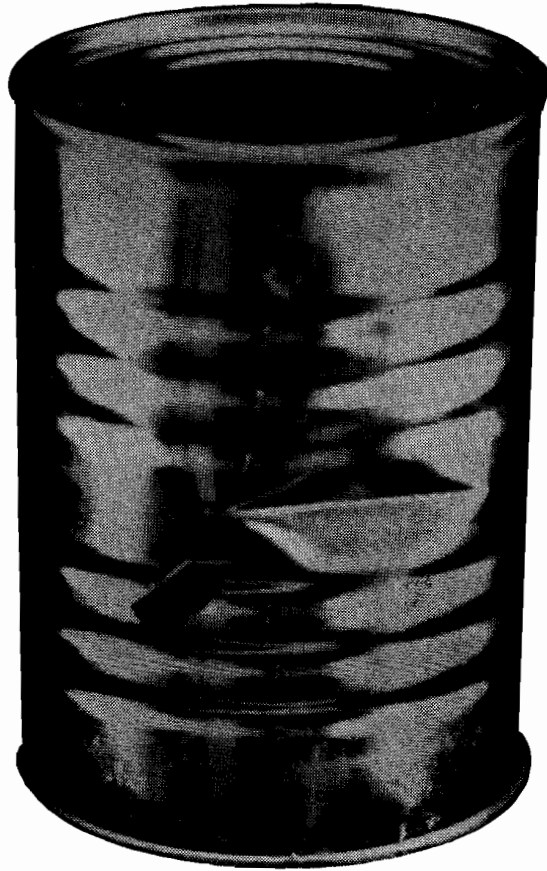
**DAMAGED
FOOD CONTAINERS
SUITABLE
FOR
SALE**

SUITABLE FOR SALE



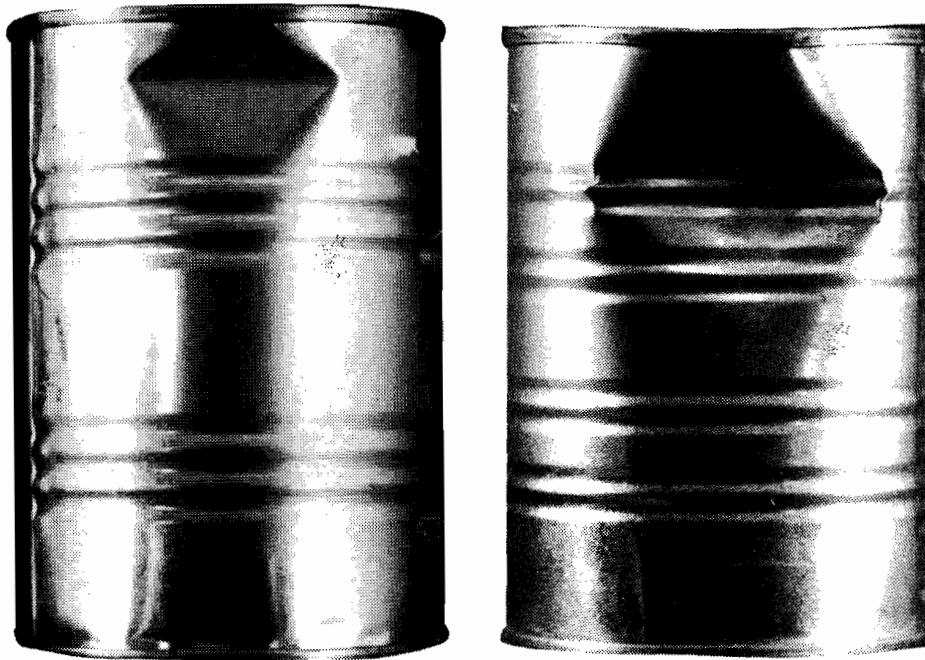
Dent

A body dent which forces the end seams inward to such an extent that the countersink is involved but no sharp edges are evident. (8:21-11.3a)



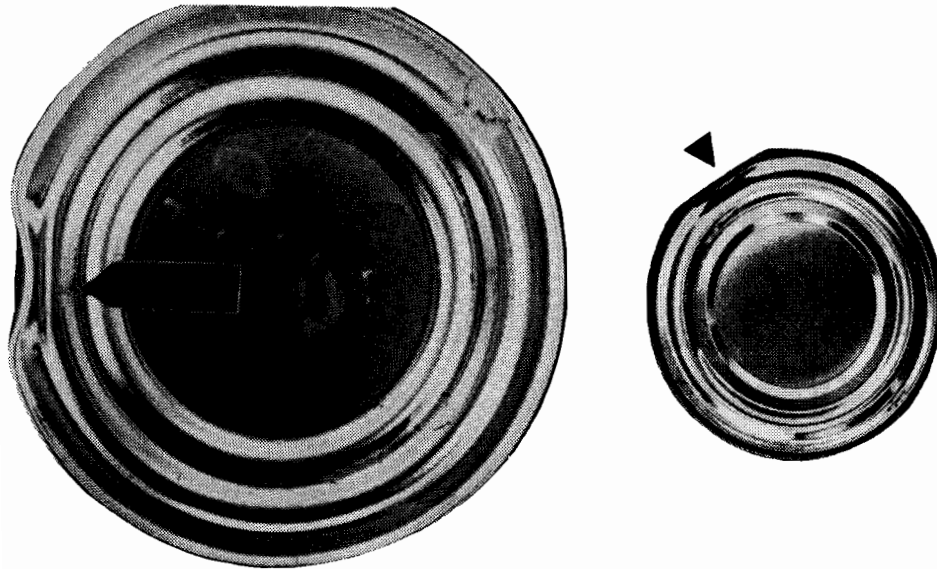
Dent

A moderately deep angular indentation with moderately acute crimping of the body wall. (8:21-11.3b)



Dent

A can with a moderately deep, sharp, angular indentation with moderately acute crimping of the body wall. The end seam malposition is so slight that it could be detected only by use of a straight edge or flat surface.
(8:21-11.3 c)



Dent

A can containing deep, sharp vertical or side rim dents on the double seam, but not severe enough to cause the lid to bulge or buckle noticeably. Provided however, in instances where the dent is severe and the continuity of the seam is disrupted or a rise is noted in the end of the site of the rupture, the can would be unsuitable for sale for food purposes. (8:21-11.3 d)



Slight Rust

A can containing slight rust, easily removable by cleaning or moderate buffing. (8:21-11.3 e)