

TITLE 14
 DATE OF DISCARD 3/3/97
 # 18

**TITLE 14
 BOARD OF PUBLIC UTILITIES**

CERTIFICATION OF OFFICIAL TEXT AND LIST OF VALID PAGES ----- vii

CONTENTS BY CHAPTER

(For contents by subchapter and section, see specific chapter.)

CHAPTER 1	RULES OF PRACTICE
CHAPTER 2	PROTECTION OF UNDERGROUND FACILITIES: ONE-CALL DAMAGE PREVENTION SYSTEM
CHAPTER 3	ALL UTILITIES
CHAPTERS 4 THROUGH 5	(RESERVED)
CHAPTER 5A	NUCLEAR PLANT DECOMMISSIONING COST AND TRUST FUND REVIEW
CHAPTER 6	GAS SERVICE
CHAPTER 6A	OIL DISTRIBUTION
CHAPTER 7	NATURAL GAS PIPELINES
CHAPTER 8	(RESERVED)
CHAPTER 9	SEWER AND WATER
CHAPTER 9A	(RESERVED)
CHAPTER 10	TELEPHONE
CHAPTER 11	ADMINISTRATIVE ORDERS
CHAPTER 12	DEMAND SIDE MANAGEMENT
CHAPTERS 13 THROUGH 16	(RESERVED)
CHAPTER 17	RULES OF PRACTICE AND PROCEDURE OF THE OFFICE OF CABLE TELEVISION
CHAPTER 18	REGULATIONS OF CABLE TELEVISION
CHAPTERS 19 THROUGH 24	(RESERVED)
CHAPTER 25	TECHNICAL SUFFICIENCY STANDARDS FOR SOLAR ENERGY DEVICES OR SYSTEMS FOR THE PURPOSE OF QUALIFYING FOR A SALES AND USE TAX EXEMPTION
CHAPTERS 26 THROUGH 28	(RESERVED)
CHAPTER 29	ENERGY EMERGENCY
CHAPTER 30	(RESERVED)
CHAPTER 31	GRANT AND LOAN PROGRAMS

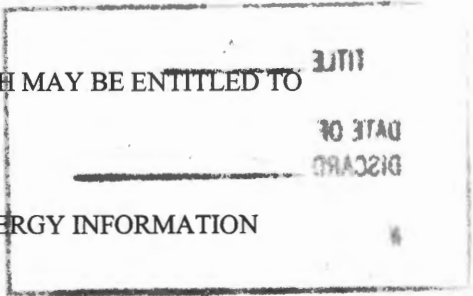
TITLE 14
 DATE OF DISCARD 3/3/97
 # 18

CHAPTER 32 SUBMISSION AND HANDLING OF INFORMATION WHICH MAY BE ENTITLED TO
CONFIDENTIAL TREATMENT

CHAPTER 33 ENERGY FACILITY REVIEW BOARD

CHAPTER 34 PERIODIC REPORTING BY ENERGY INDUSTRIES OF ENERGY INFORMATION

CHAPTERS 35
THROUGH 38 (RESERVED)

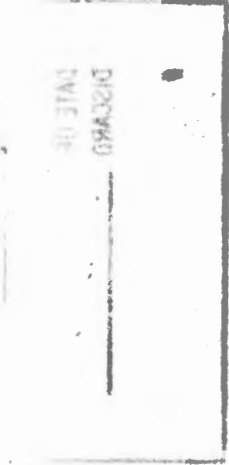


INDEX

DEFINITIONS

STATUTE-TO-RULE TABLE

RULE-TO-STATUTE TABLE



**CERTIFICATION OF OFFICIAL TEXT
AND
LIST OF VALID PAGES**

Title 14—Board of Public Utilities

Supplement February 18, 1997

I, Barbara A. Harned, Director and Chief Administrative Law Judge of the Office of Administrative Law, pursuant to the authority of N.J.S.A. 52:14B-7, do hereby supplement Title 14, Board of Public Utilities, of the New Jersey Administrative Code. The pages issued with this Supplement contain the text of all rule changes adopted and filed with the Office of Administrative Law and published in the New Jersey Register as of the date of this supplement.

The list of "Valid Title 14 Pages" following provides a means of determining whether this title contains the proper pages. Every page in Title 14, along with the page's current supplement date, is listed. A page is valid if the page number and supplement date on the list match the page number and "Supp." date at the bottom of the appropriate page.

VALID TITLE 14 PAGES
(Current through February 18, 1997)

Page Number	Supp. Date	Page Number	Supp. Date	Page Number	Supp. Date
i	1-6-97	3-17	2-18-97	9-10	5-20-96
ii	1-6-97	3-18	2-18-97	9-11	5-20-96
iii	6-17-96	3-19	2-3-97	9-12	5-20-96
iv	6-17-96	3-20	2-3-97	Chapter 9A	
v	2-3-97	3-21	2-3-97	9A-1	6-17-96
vi	2-3-97	3-22	2-3-97	BLANK	6-17-96
vii	2-18-97	3-23	2-3-97	Chapter 10	
viii	2-18-97	3-24	2-3-97	10-1	2-3-97
ix	2-18-97	3-25	2-3-97	10-2	2-3-97
BLANK	2-18-97	3-26	2-3-97	10-2.1	2-3-97
Chapter 1		3-27	2-3-97	BLANK	2-3-97
1-1	2-20-96	3-28	2-3-97	10-3	12-18-95
1-2	2-20-96	Chapter 4		10-4	12-18-95
1-3	2-20-96	4-1	12-18-95	10-5	9-16-96
1-4	2-20-96	BLANK	12-18-95	10-6	9-16-96
1-5	2-20-96	Chapter 5		10-6.1	9-16-96
1-6	2-20-96	5-1	1-6-97	BLANK	9-16-96
1-7	2-20-96	BLANK	1-6-97	10-7	12-18-95
1-8	2-20-96	Chapter 5A		10-8	12-18-95
1-9	2-20-96	5A-1	5-15-95	10-9	12-18-95
1-10	2-20-96	5A-2	5-15-95	10-10	12-18-95
1-11	8-19-96	5A-3	5-15-95	10-11	9-16-96
1-12	8-19-96	5A-4	5-15-95	10-12	9-16-96
1-12.1	8-19-96	5A-5	5-15-95	10-13	2-3-97
BLANK	8-19-96	BLANK	5-15-95	10-14	2-3-97
1-13	2-20-96	Chapter 6		10-15	2-3-97
1-14	2-20-96	6-1	9-16-96	10-16	2-3-97
1-15	2-20-96	6-2	9-16-96	10-16.1	2-3-97
1-16	2-20-96	6-3	9-16-96	10-16.2	2-3-97
1-17	2-20-96	6-4	9-16-96	10-16.3	2-3-97
BLANK	2-20-96	6-5	9-16-96	10-16.4	2-3-97
Chapter 2		6-6	9-16-96	10-16.5	2-3-97
2-1	2-3-97	Chapter 6A		10-16.6	2-3-97
2-2	2-3-97	6A-1	5-15-95	10-17	8-19-96
2-3	10-7-96	6A-2	5-15-95	10-18	8-19-96
2-4	10-7-96	Chapter 7		Chapter 11	
2-5	10-7-96	7-1	7-3-95	11-1	6-17-96
2-6	10-7-96	7-2	7-3-95	11-2	6-17-96
2-7	10-7-96	7-3	7-3-95	11-3	6-17-96
BLANK	10-7-96	7-4	7-3-95	11-4	6-17-96
Chapter 3		7-5	7-3-95	11-5	6-17-96
3-1	2-3-97	7-6	7-3-95	11-6	6-17-96
3-2	2-3-97	7-7	7-3-95	11-7	6-17-96
3-3	2-3-97	BLANK	7-3-95	11-8	6-17-96
3-4	2-3-97	Chapter 8		11-9	8-19-96
3-5	2-3-97	8-1	7-3-95	11-10	8-19-96
3-6	2-3-97	BLANK	7-3-95	11-10.1	8-19-96
3-7	2-3-97	Chapter 9		BLANK	8-19-96
3-8	2-3-97	9-1	5-20-96	11-11	12-18-95
3-9	2-3-97	9-2	5-20-96	11-12	12-18-95
3-10	2-3-97	9-3	8-19-96	11-13	6-17-96
3-11	2-3-97	9-4	8-19-96	BLANK	6-17-96
3-12	2-3-97	9-5	5-20-96	Chapter 12	
3-13	2-3-97	9-6	5-20-96	12-1	12-2-96
3-14	2-3-97	9-7	5-20-96	12-2	12-2-96
3-15	2-18-97	9-8	5-20-96	12-3	12-2-96
3-16	2-18-97	9-9	5-20-96	12-4	12-2-96

Page Number	Supp. Date	Page Number	Supp. Date	Page Number	Supp. Date
12-5	12-2-96	18-17	7-3-95	Chapter 32	
12-6	12-2-96	18-18	7-3-95	32-1	2-20-96
12-7	12-2-96	18-19	7-3-95	32-2	2-20-96
12-8	12-2-96	18-20	7-3-95	32-3	2-20-96
12-9	12-2-96	18-21	7-3-95	BLANK	2-20-96
12-10	12-2-96	18-22	7-3-95	Chapter 33	
Chapters 13 through 16		18-23	7-3-95	33-1	5-15-95
13-1	5-15-95	18-24	7-3-95	33-2	5-15-95
BLANK	5-15-95	18-25	7-3-95	Chapter 34	
Chapter 17		18-26	7-3-95	34-1	5-15-95
17-1	5-15-95	18-27	7-3-95	34-2	5-15-95
17-2	5-15-95	BLANK	7-3-95	34-3	5-15-95
17-3	5-15-95	Chapters 19 through 24		34-4	5-15-95
17-4	5-15-95	19-1	5-15-95	Chapters 35 through 37	
17-5	5-15-95	BLANK	5-15-95	35-1	5-15-95
17-6	5-15-95	Chapter 25		BLANK	5-15-95
17-7	5-15-95	25-1	5-15-95	Chapter 38	
17-8	5-15-95	25-2	5-15-95	38-1	5-20-96
17-9	5-15-95	25-3	5-15-95	BLANK	5-20-96
17-10	5-15-95	25-4	5-15-95	Index	
17-11	5-15-95	Chapters 26 through 28		I-1	2-3-97
17-12	5-15-95	26-1	5-15-95	I-2	2-3-97
17-13	5-15-95	BLANK	5-15-95	I-3	2-3-97
17-14	5-15-95	Chapter 29		I-4	2-3-97
17-15	5-15-95	29-1	3-18-96	I-5	2-3-97
17-16	5-15-95	29-2	3-18-96	I-6	2-3-97
17-17	5-15-95	29-3	3-18-96	I-7	2-3-97
17-18	5-15-95	29-4	3-18-96	I-8	2-3-97
Chapter 18		29-5	3-18-96	I-9	2-3-97
18-1	7-3-95	29-6	3-18-96	I-10	2-3-97
18-2	7-3-95	29-7	3-18-96	I-11	2-3-97
18-3	7-3-95	29-8	3-18-96	I-12	2-3-97
18-4	7-3-95	29-9	3-18-96	Definitions	
18-5	7-3-95	BLANK	3-18-96	D-1	2-3-97
18-6	7-3-95	Chapter 30		D-2	2-3-97
18-7	10-21-96	30-1	3-18-96	D-3	2-3-97
18-8	10-21-96	BLANK	3-18-96	D-4	2-3-97
18-9	10-21-96	Chapter 31		D-5	2-3-97
18-10	10-21-96	31-1	5-15-95	BLANK	2-3-97
18-10.1	10-21-96	31-2	5-15-95	Tables	
BLANK	10-21-96	31-3	5-15-95	T1-1	2-3-97
18-11	7-3-95	31-4	5-15-95	BLANK	2-3-97
18-12	7-3-95	31-5	5-15-95	T2-1	2-3-97
18-13	7-3-95	31-6	5-15-95	BLANK	2-3-97
18-14	7-3-95	31-7	5-15-95		
18-15	7-3-95	BLANK	5-15-95		
18-16	7-3-95				

CHAPTER 5
(RESERVED)

Chapter Historical Note

Chapter 5, Electric, was filed and became effective prior to September 1, 1969. Subchapter 4, Regulation for Residential Electric Underground Extensions, was filed and became effective December 31, 1971 as R.1971 d.183. See: 1 N.J.R. 9(a), 3 N.J.R. 277(c). Subchapter 7, was filed and became effective April 19, 1973 as R.1973 d.106. See: 4 N.J.R. 134(c), 5 N.J.R. 167(a). Subsequent revisions to Subchapter 7

were filed and became effective January 21, 1975, as R.1975 d.12. See: 5 N.J.R. 353(a), 7 N.J.R. 62(b). Subchapter 7 was deleted and the deletion was filed and became effective February 17, 1977 d.37. See: 9 N.J.R. 139(a). Subchapter 3, expired April 23, 1984 and was adopted as a new rule pursuant to Executive Order No. 66(1978) as R.1985 d.625 effective December 16, 1985. See: 17 N.J.R. 2237(a), 17 N.J.R. 2998(a). Chapter 5 expired on December 16, 1990 pursuant to Executive Order No. 66(1978). Chapter 5, Electric, was adopted as new rules by R.1991 d.583, effective December 2, 1991. See: 23 N.J.R. 1519(a), 23 N.J.R. 3652(a). Pursuant to Executive Order No. 66(1978 Chapter 5, Electric, expired on December 2, 1996.

INDEX

Citations are to Title, Chapter and Subchapter

ACCIDENTS

Cable television, records and reports, 14:18-6
Gas pipeline companies, 14:7-1
Public utilities,
Records, 14:3-6
Reports, 14:11-5

ACCOUNTS AND ACCOUNTING

Cable television, customer bills and payments, 14:18-3
Gas companies, 14:6-4
Public utilities, customers bills and payments for service,
14:3-7
Sewer and water utilities, 14:9-5
Solid Waste, this index
Telephone utilities, 14:10-1
Water supply utilities, 14:9-5

ADULT-ORIENTED INFORMATION-ACCESS TELEPHONE SERVICE

Restrictions, 14:10-7

ALTERNATE OPERATOR SERVICE

Telecommunications, regulation, 14:10-6

APPEAL AND REVIEW

Cable television, municipal ordinances, 14:18-11
Electric companies,
Demand side management plan, 14:12-5
Public utilities,
Demand side management plan, 14:12-5

APPEARANCE

Cable television, administrative hearings, 14:17-3
Regulatory commissioners, 14:1-3

ATTORNEYS, COUNSELORS AND SOLICITORS

Regulatory commissioners board, ethical conduct, 14:1-3

AUDITS AND AUDITING

Public utilities, management, 14:3-12

AVIATION

Fuel, bulk terminal operating companies, reports, 14:34-1

BOARDS AND COMMISSIONS

Energy facility review board, practice and procedure,
14:33-1

BOARDS AND COMMISSIONS—Cont'd

Regulatory Commissioners, generally, this index

BONDS

Cable television, petitions for authority to issue, 14:17-6
Public utilities,
Issuance, board approval, 14:11-1
Petitions for authority to issue, 14:1-5

BULK TERMINAL OPERATING COMPANIES

Oil and petroleum products, reports, 14:34-1

BUSES

Autobusses, generally, this index

BUSINESS ENERGY IMPROVEMENT PROGRAM

Grants and loans, 14:31-1

CABLE TELEVISION

See, also, Public Utilities, generally, this index
Generally, 14:17-1 et seq.; 14:18-1 et seq.
Access to customers premises, 14:18-4
Answers and replies, petitions, 14:17-7
Appeal and review,
Municipal ordinances, consent for operation of system,
14:18-11
Appearances, hearings, 14:17-3
Approval, certificates of approval, 14:18-12
Bills, customer bills and payments, 14:18-3
Bonds, petitions for authority to issue, 14:17-6
Approval, certificates of approval, 14:18-12
Certificates and certification,
Petitions for certificate of approval, 14:17-6
Charges. Rates and charges, generally, post
Complaints,
Informal complaints, procedures, 14:17-6
Records, 14:18-6
Compliance, orders, decisions and recommendations,
14:17-11
Compromise and settlement, conferences, 14:17-8
Conferences, settlement conferences, 14:17-8
Connection, refusal to connect with customers installation,
14:18-4
Consent, municipal consent for operation of system,
14:18-11
Construction, facilities, 14:18-2
Contested case hearings, 14:17-9

INDEX

CABLE TELEVISION—Cont'd

Customer rights, 14:18-3
Decisions, 14:17-11
Denial of application for renewal, certificate of approval, 14:18-13
Deposits, condition of supplying or continuing service, 14:18-4
Discontinuance of service, 14:18-3; 14:18-4
Discrimination, rates, restrictions against, 14:18-14
Equipment,
 Maintenance, 14:18-2
 Special equipment, customer rights, 14:18-3
 Testing, 14:18-9
Expenses and expenditures, administrative expenses, 14:17-2
Facilities, construction and maintenance, 14:18-2
Fees, 14:17-2
Filing, 14:18-7
 Certificates of approval, 14:18-12
 Petitions, 14:17-6
 Uncontested case proceedings, 14:17-10
Forms,
 Answers and replies, 14:17-7
 Bills for service, 14:18-3
 Municipal consent, 14:18-11
 Petitions, 14:17-6
Hearings, 14:17-1 et seq.; 14:17-9
 Administrative law judges, 14:18-13
 Contested case hearings, 14:17-9
 Fees, 14:17-2
 Municipal consent for operation of system, 14:18-11
 Pleadings, 14:17-4
 Uncontested case hearings, 14:17-10
Informal complaints, procedures, 14:17-6
Insurance, 14:18-8
Interruptions of service,
 Reports and records, 14:18-6
Joinder of requests for relief, 14:17-6
Liability insurance, 14:18-8
Machinery and equipment. Equipment, generally, ante
Merger or consolidation, petitions for approval, 14:17-6
Mortgages, petitions for authority to execute, 14:17-6
Motions, reopening of proceedings, 14:17-9
Municipalities, consent to operation of cable television system, 14:18-3; 14:18-11
 Certificates of approval, 14:17-6
Notices,
 Customers, 14:18-3
 Municipal hearings, consent for operation of system, 14:18-11
 Pleadings, 14:17-4
Office of cable television, 14:17-1 et seq.
Offices, cable operators, 14:18-5
Optional pre-proposal phase, municipal consent, 14:18-13
Orders, 14:17-11
Ordinances, municipal ordinances, consent for operation of system, 14:18-11
Petitions, 14:17-6
 Answers and replies, 14:17-7
 Certificates of approval, 14:18-12
Plant and facilities, construction and maintenance, 14:18-2
Pleadings, 14:17-4
Supp. 2-3-97

CABLE TELEVISION—Cont'd

Poles, utility pole attachment rates, 14:18-2
Practice and procedure, 14:17-1 et seq.
Pre-proposal phase, municipal consent, 14:18-13
Prior regulations, effect, 14:18-14
Rates and charges,
 Bills, customer bills and payments, 14:18-3
 Discrimination, restrictions against, 14:18-14
 Utility pole attachment rates, 14:18-2
Recommendations, 14:17-11
Records and recordation, 14:18-6
 Municipal hearings, consent for operation of system, 14:18-11
Renewals, municipal consent, 14:18-13
Reopening of proceedings, motions, 14:17-9
Reports, 14:18-6; 14:18-7
Restrictions, municipal ordinances, 14:18-11
Retroactive application of regulations, 14:18-14
Rights,
 Cable operator rights, 14:18-4
 Customers, 14:18-3
Sales, denial of application for renewal of certificate of approval, 14:18-13
Service,
 Cable operator rights, 14:18-4
 Customers rights, 14:18-3
 Interruptions of service, reports and records, 14:18-6
 Technical standards, 14:18-10
 Testing, 14:18-9
Service of process, pleadings, 14:17-4
Settlement conferences, 14:17-8
Shares and shareholders, petitions for authority to issue shares, 14:17-6
Standards, technical standards for system operation, 14:18-10
Tariffs, filings or petitions, 14:17-6
Technical standards for system operation, 14:18-10
Telephone system, reports, 14:18-7
Testing, equipment, 14:18-9
Uncontested case proceedings, 14:17-10

CARRIERS

Autobuses, generally, this index
Railroads, generally, this index

CERTIFICATES AND CERTIFICATION

Cable television,
 Certificates of approval, 14:18-12
 Petitions for certificate of approval, 14:17-6

CHILDREN AND MINORS

Telephones, adult-oriented information-access telephone service, 14:10-7

COMMERCE, ENERGY AND ECONOMIC DEVELOPMENT, DEPARTMENT OF

Energy planning and conservation division,
 Business energy improvement program, 14:31-1

COMPRESSED GAS

Gas Companies, generally, this index

COMPROMISE AND SETTLEMENT

- Cable television, 14:17-8
- Public utilities, conferences, 14:1-7
- Regulatory commissioners board, conferences, 14:1-7

CONFERENCES

- Cable television, settlement conferences, 14:17-8
- Natural gas pipelines, safety violations, 14:7-2
- Public utilities, 14:1-7
- Regulatory commissioners board, 14:1-7

CONFIDENTIAL OR PRIVILEGED INFORMATION

- Public utilities, 14:32-1
- Regulatory commissioners, 14:32-1

CONSERVATION

- Electric Companies, this index
- Energy, this index

CONSTRUCTION

- Cable television, facilities, 14:18-2
- Electric Companies, this index
- Gas companies, plant and facility construction, 14:6-1
- Oil utilities, plant facilities, 14:6A-1
- Public utilities, 14:3-2
- Sewer and water utilities, 14:9-1
- Telecommunications, this index
- Water supply plants and systems, 14:9-1

CONTESTED CASES

- Cable television, hearings, 14:17-9
- Public utilities, 14:1-8
- Regulatory commissioners board, 14:1-8
- Small water companies, takeovers, 14:9-6

DECISIONS

- Cable television, compliance, 14:17-11
- Regulatory commissioners board, compliance, 14:1-10

DECOMMISSIONING

- Nuclear electricity generating facility, 14:5A-1 et seq.

DEFAULT

- Public utilities, customers, 14:3-7

DEMAND SIDE MANAGEMENT PROGRAMS

- Public utilities, 14:12-1 et seq.

DIRECTORIES

- Telephone directors, publication and distribution, 14:10-1

DISCONTINUANCE OF SERVICE

- Cable television, 14:18-3; 14:18-4
- Electric companies, 14:3-7
- Gas companies, 14:3-7
- Public utilities, 14:3-3; 14:3-7

DISCRIMINATION

- Cable television, rates, 14:18-14
- Telecommunications, intraLATA toll calls, local exchange carriers, competition, 14:10-10

INDEX

DISPOSAL

- Solid Waste, generally, this index

DIVERSION OF SERVICE

- Gas and electric utilities, 14:3-7

ELECTRIC COMPANIES

- See, also, Public Utilities, generally, this index
- Appeal and review,
 - Demand side management programs, 14:12-5
- Bills and payments for service, 14:3-7
- Budget billing and payment plans, residential accounts, 14:3-7
- Confidential or privileged information, 14:32-1
- Conservation,
 - Demand side management, 14:12-1 et seq.
 - Energy emergencies, 14:29-1 et seq.
 - Home Energy Savings Program, generally, this index
- Costs,
 - Expenses and Expenditures, generally, this index
 - Nuclear electricity generating facility, decommissioning costs, 14:5A-1 et seq.
- Demand side management programs, 14:12-1 et seq.
- Discontinuance of service, nonpayment of bills, 14:3-7
- Diversion of service, 14:3-7
- Earnings, demand side management programs, 14:12-3; 14:12-4
- Emergencies,
 - Energy emergency, 14:29-1 et seq.
- Energy emergency, 14:29-1 et seq.
- Energy facility review board, practice and procedure, 14:33-1
- Expenses and expenditures,
 - Cost-effective investment, demand side management initiatives, 14:12-1 et seq.
 - Nuclear electricity generating facility, decommissioning, 14:5A-1 et seq.
 - Recovery, demand side management cost recovery mechanism, 14:12-4
- Facilities. Plants and facilities, generally, post Home Energy Savings Program, generally, this index
- Incentives, demand side management programs, 14:12-3
- Investments, demand side management initiatives, 14:12-1 et seq.
- Landlord and tenant, discontinuance of service, 14:3-7
- Notices,
 - Demand side management plan, 14:12-5
 - Discontinuance of service, 14:3-7
- Nuclear electricity generating facility, decommissioning, 14:5A-1 et seq.
- Payments, customers bills and payments for service, 14:3-7
- Performance-based demand side management programs, 14:12-1 et seq.
- Plans and specifications, demand side management resource plan, 14:12-2
- Hearings, 14:12-5
- Plants and facilities,
 - Nuclear electricity generating facilities, decommissioning, 14:5A-1 et seq.
 - Underground service, generally, post
- Rates and charges,
 - Bills and payments for service, 14:3-7
 - Standard pricing offers, demand side management programs, 14:12-3

INDEX

ELECTRIC COMPANIES—Cont'd

Reduction in customers usage, energy emergency, 14:29-1 et seq.
Service,
Discontinuance of service, nonpayment of bills, 14:3-7
Reductions in use, energy emergency, 14:29-1 et seq.
Termination, nonpayment of bills, 14:3-7
Underground service, generally, post
Shared savings, demand side management programs, 14:12-3
Shortages, energy emergency, 14:29-1 et seq.
Telephone system information, 14:3-6
Termination of service, nonpayment of bills, 14:3-7
Trade secrets, confidentiality, 14:32-1
Underground service,
Protection, markouts, one-call damage prevention system, 14:2-1 et seq.
Winter termination of residential service, 14:3-7
Wires. Electric Wires, generally, this index

ELECTRIC WIRES

Protection, markouts, one-call damage prevention system, 14:2-1 et seq.

ELECTRICITY

Electric Companies, generally, this index
Emergencies,
Energy emergency, 14:29-1 et seq.
Energy emergency, 14:29-1 et seq.
Gas pipeline companies, electric installations, safety requirements, 14:7-1
Home Energy Savings Program, generally, this index
Nuclear electricity generating facility,
Decommissioning, 14:5A-1 et seq.
Reduction in customers usage, energy emergency, 14:29-1 et seq.
Underground service,
Protection, markouts, one-call damage prevention system, 14:2-1 et seq.
Wires. Electric Wires, generally, this index

EMERGENCIES

Electric Companies, generally, this index
Energy emergencies, 14:29-1 et seq.
Gas Companies, this index
Public Utilities, this index

EMINENT DOMAIN

Public utilities, petitions for authority to exercise, 14:1-5

ENERGY

Business energy improvement program, grants and loans, 14:31-1
Commerce, Energy and Economic Development, Department of, generally, this index
Conservation,
Business energy improvement program, 14:31-1
Demand side management programs, utilities, 14:12-1 et seq.
Home Energy Savings Program, generally, this index
Shortages, energy emergency, 14:29-1 et seq.
Solar energy, sales and use tax, exemption, 14:25-1 et seq.
Electric Companies, generally, this index

Supp. 2-3-97

ENERGY—Cont'd

Emergencies, 14:29-1 et seq.
Environmental Protection and Energy Department, generally, this index
Gas Companies, generally, this index
Home Energy Savings Program, generally, this index
Nuclear electricity generating facility, decommissioning, 14:5A-1 et seq.
Reduction in usage, energy emergency, 14:29-1 et seq.
Shortages, energy emergency, 14:29-1 et seq.
Solar energy, sales and use tax, exemption, 14:25-1 et seq.

ENERGY FACILITY REVIEW BOARD

Practice and procedure, 14:33-1

ENERGY PLANNING AND CONSERVATION DIVISION

Business energy improvement program, 14:31-1

ENTRY ON LAND OR WATERS

Cable television, access to customers premises, 14:18-4
Public utilities, access to customers premises, 14:3-3

ENVIRONMENTAL PROTECTION, DEPARTMENT OF

Small water companies, takeover regulations, 14:9-6

EXPENSES AND EXPENDITURES

Cable television, administrative expenses, 14:17-2
Electric Companies, this index
Gas Companies, this index
Nuclear electricity generating facility, decommissioning, 14:5A-1 et seq.
Public Utilities, this index

EXPLOSIVES

Railroads. Transferred to Transportation, Title 16

EXTENSIONS OF SERVICE

Electric Companies, this index
Public utilities, rates and charges, 14:3-8

FEES

Public Utilities, this index
Regulatory commissioners, 14:1-2

FILING

Cable Television, this index
Regulatory commissioners board, petitions, 14:1-5

FINES AND PENALTIES

Natural gas pipelines, safety violations, 14:7-2

FIRE PROTECTION AND PREVENTION

Gas pipeline companies, 14:7-1

FORMS

Cable Television, this index
Commerce, Energy and Economic Development, Department of, this index
Public Utilities, this index
Regulatory commissioners board, petitions, 14:1-5

INDEX

FRANCHISES

- Public utilities,
 - Board approval required, 14:11-1
 - Petitions for approval, 14:1-5

FUNDS

- Business energy development program, demonstration program fund, 14:31-1
- Nuclear electricity generating facility, decommissioning trust fund, 14:5A-4

GARBAGE AND REFUSE

- Solid Waste, generally, this index

GAS

- Oil and Petroleum Products, generally, this index

GAS COMPANIES

- See, also, Public Utilities, generally, this index
- Generally, 14:6-1 et seq.
- Accounts and accounting, 14:6-4
- Appeal and review,
 - Demand side management programs, 14:12-5
- Bids and bidding, demand side management, 14:12-4
- Bills and payments for service, 14:3-7
- Budget billing and payment plans, residential accounts, 14:3-7
- Classification, pipelines, 14:7-1
- Confidential or privileged information, 14:32-1
- Connections, 14:6-2
- Conservation,
 - Demand side management, 14:12-1 et seq.
 - Energy emergencies, 14:29-1 et seq.
 - Home Energy Savings Program, generally, this index
- Construction,
 - Pipelines, 14:7-1
 - Plant and facility construction, 14:6-1
- Corrosion control, pipes, 14:7-1
- Costs. Expenses and expenditures, generally, post
- Demand side management programs, 14:12-1 et seq.
- Discontinuance of service, nonpayment of bills, 14:3-7
- Diversion of service, 14:3-7
- Earnings, demand side management programs, 14:12-3; 14:12-4
- Emergencies,
 - Energy emergency, 14:29-1 et seq.
 - Leaks, 14:6-2
 - Shutdown of high-pressure distribution system, 14:6-1
- Energy emergency, 14:29-1 et seq.
- Energy facility review board, practice and procedure, 14:33-1
- Expenses and expenditures,
 - Cost-effective investment, demand side management initiatives, 14:12-1 et seq.
 - Recovery, demand side management cost recovery mechanism, 14:12-4
- Facilities. Plants and facilities, generally, post
- Federal Code, pipeline facilities, compliance, 14:7-1
- Fines and penalties, natural gas pipelines, safety violations, 14:7-2
- Home Energy Savings Program, generally, this index
- Incentives, demand side management programs, 14:12-3
- Inspectors and inspection,
 - Leaks, 14:6-1

GAS COMPANIES—Cont'd

- Investments, demand side management initiatives, 14:12-1 et seq.
- Involuntary curtailment of use, priority plan, energy emergency, 14:29-3
- Landlord and tenant, discontinuance of service, 14:3-7
- Leaks,
 - Emergency telephone number, 14:6-2
 - Inspection and repair, 14:6-1
- Master meter systems, 14:6-5
- Meters, 14:6-3
 - Master meter systems, 14:6-5
- Notices,
 - Demand side management programs, 14:12-5
 - Discontinuance of service, 14:3-7
- Odorization of gas, 14:6-2; 14:7-1
- Officers and employees,
 - Emergency personnel, 14:6-2
- Payments, bills and payments for service, 14:3-7
- Performance-based demand side management programs, 14:12-1 et seq.
- Pipes. Gas Mains or Pipes, generally, this index
- Plans and specifications,
 - Demand side management resource plan, 14:12-2
 - Hearings, 14:12-5
 - Energy emergencies, priority plan for involuntary curtailment, 14:29-3
- Plants and facilities,
 - Construction, 14:6-1
 - Energy facility review board, practice and procedure, 14:33-1
- Pressure requirements, 14:6-2
- Priority plan for involuntary curtailment, energy emergencies, 14:29-3
- Rates and charges,
 - Bills and payments for service, 14:3-7
 - Standard pricing offers, demand side management programs, 14:12-3
- Records and recordation,
 - Retention of records, 14:6-4
- Reduction in customers usage, energy emergency, 14:29-1 et seq.
- Safety, 14:7-1
 - Natural gas pipelines, violations, fines and penalties, 14:7-2
- Service, 14:6-2
 - Discontinuance of service, nonpayment of bills, 14:3-7
 - Reductions in use, energy emergency, 14:29-1 et seq.
- Shared savings, demand side management programs, 14:12-3
- Shortages, energy emergency, 14:29-1 et seq.
- Shut-off valves, 14:7-1
- Telephone system information, 14:3-6
- Termination of service, nonpayment of bills, 14:3-7
- Tests,
 - Meters, 14:6-3
 - Pipelines, 14:7-1
- Underground facilities,
 - Minimum depth, 14:7-1
- Welding, pipelines, 14:7-1
- Winter termination of residential service, 14:3-7

INDEX

GAS MAINS OR PIPES

- Generally, 14:7-1
- Accidents, records and reports, 14:7-1
- Classification of system, 14:7-1
- Construction, requirements, 14:7-1
- Corrosion control, 14:7-1
- Electric installations, safety requirements, 14:7-1
- Federal Code, compliance, 14:7-1
- Fines and penalties, safety violations, 14:7-2
- Leaks, 14:6-1
- Meters, 14:6-3
 - Master meter system, 14:6-5
- Pressure requirements, 14:6-2
- Safety, fines and penalties, 14:7-2
- Shut-off valves, 14:7-1
- Shutdown of high pressure system, 14:6-1
- Tests, 14:7-1
- Underground services,
 - Minimum depth, 14:7-1
 - Protection, markouts, one-call damage prevention system, 14:2-1 et seq.
- Welding, 14:7-1

GASOLINE

- See, also, Oil and Petroleum Products, generally, this index
- Bulk terminal operating companies, reports, 14:34-1
- Dealers, reports, 14:34-2
- Energy emergencies, 14:29-1 et seq.
- Reports,
 - Retail dealers, 14:34-2
 - Suppliers, 14:29-7
- Sales, energy emergencies, restrictions, 14:29-6
- State set-aside program, energy emergencies, 14:29-5

GOVERNOR

- Energy emergency, proclamation, 14:29-1 et seq.
- Proclamations,
 - Energy emergency, 14:29-1 et seq.

GRANTS

- Business energy improvement program, 14:31-1
- Energy conservation, business energy improvement program, 14:31-1
- Matching grants,
 - Business energy improvement program, 14:31-1

HAZARDOUS SUBSTANCES AND WASTE

- Underground services,
 - Protection, markouts, one-call damage prevention system, 14:2-1 et seq.

HEARINGS

- Cable Television, this index
- Commerce, Energy and Economic Development, Department of, this index
- Demand side management, plans, public utilities, 14:12-5
- Natural gas pipelines, safety violations, 14:7-2
- Nuclear electricity generating facility, decommissioning costs, 14:5A-3
- Regulatory commissioners, contested case hearings, 14:1-8
- Supp. 2-3-97

HOME HEATING OIL

- Oil Companies, generally, this index

HOUSING

- Energy conservation. Home Energy Savings Program, generally, this index

INCENTIVES

- Public utilities, demand side management programs, 14:12-3

INSPECTORS AND INSPECTION

- Electric Companies, this index
- Gas Companies, this index
- Oil utilities, plant construction, 14:6A-1
- Public Utilities, this index
- Sewer and water utilities, 14:9-1
- Water supply plants and systems, 14:9-1

INSURANCE

- Cable television, liability insurance, 14:18-8

INTERRUPTIONS OF SERVICE

- Cable television, 14:18-3
 - Reports and records, 14:18-6
- Gas pipeline companies, 14:7-1
- Public utilities, 14:3-3
- Railroads. Transferred to Transportation, Title 16
- Telephone utilities, 14:10-1

INVESTMENTS

- Public utilities, demand side management initiatives, 14:12-1 et seq.

LANDLORD AND TENANT

- Public utilities, discontinuance of service, 14:3-7

LEAKS

- Gas Companies, this index

LEASES

- Cable television, petitions for approval, 14:17-6
- Public utilities,
 - Approval by board, 14:11-1
 - Petitions for approval, 14:1-5

LOANS

- Business energy improvement program, 14:31-1
- Energy conservation, business energy improvement program, 14:31-1

MACHINERY AND EQUIPMENT

- Cable Television, this index
- Solar energy systems, sales and use tax, exemption, 14:25-1 et seq.

MATCHING GRANTS

- Business energy improvement program, 14:31-1

MERGER AND CONSOLIDATION

- Cable television, petitions for approval, 14:17-6
- Public utilities, petitions for approval, 14:1-5

INDEX

METERS

- Generally, 14:3-4
- Gas meters, 14:6-3
 - Master meter systems, 14:6-5
- Oil distribution utilities, 14:6A-3
- Replacement, 14:3-4
- Tests,
 - Gas meters, 14:6-3
 - Oil distribution utilities, 14:6A-3
 - Water meters, 14:9-3
- Water meters, 14:9-3

MORTGAGES

- Cable television, petitions for authority to execute, 14:17-6
- Public utilities, petitions for authority to execute, 14:1-5

MOTIONS

- Cable television, reopening of proceedings, 14:17-9
- Reopening of hearing or record, regulatory commissioners board, 14:1-8

MOTOR CARRIERS

- Autobuses, generally, this index

MOTOR FUELS

- See, also, Oil and Petroleum Products, generally, this index
- Bulk terminal operating companies, reports, 14:34-1
- Dealers, reports, 14:34-2
- Energy emergencies, regulation and control of retail sale, 14:29-6
- Reports,
 - Retail dealers, 14:34-2
 - Suppliers, 14:29-7
- Sales, energy emergencies, restrictions, 14:29-6
- Terminals, bulk terminal operating companies, reports, 14:34-1

MOTOR VEHICLES

- Autobuses, generally, this index

MUNICIPALITIES

- Cable television, consent, certificates of approval, 14:17-6; 14:18-11

NATURAL GAS

- Gas Companies, generally, this index

NOTICE

- Cable Television, this index
- Electric Companies, this index
- Gas Companies, this index
- Natural gas pipelines, safety violations, 14:7-2
- Nuclear electricity generating facility, decommissioning costs, hearings, 14:5A-3
- Public Utilities, this index
- Regulatory commissioners, proceedings before board, 14:1-4

NUCLEAR ELECTRICITY GENERATING FACILITY

- Decommissioning, 14:5A-1 et seq.

OIL AND PETROLEUM PRODUCTS

- Bulk terminal operating companies, reports, 14:34-1

OIL AND PETROLEUM PRODUCTS—Cont'd

- Energy emergency, 14:29-1 et seq.
- Gas Companies, generally, this index
- Gasoline, generally, this index
- Motor Fuels, generally, this index
- Oil Companies, generally, this index
- Priorities and preferences, energy emergencies, state set-aside program, 14:29-5
- Reports,
 - Bulk terminal operating companies, 14:34-1
 - Suppliers, 14:29-7
- Shortages, energy emergency, 14:29-1 et seq.
- State set-aside, energy emergencies, 14:29-5
- Storage, bulk terminal operating companies, reports, 14:34-1 14:34-1
- Suppliers, reports, 14:29-7
- Underground services,
 - Protection, markouts, one-call damage prevention system, 14:2-1 et seq.

OIL COMPANIES

- See, also, Public Utilities, generally, this index
- Generally, 14:6A-1 et seq.
- Confidential or privileged information, 14:32-1
- Conservation,
 - Energy emergencies, 14:29-1 et seq.
 - Home Energy Savings Program, generally, this index
- Construction, plant facilities, 14:6A-1
- Emergencies,
 - Energy emergency, 14:29-1 et seq.
- Energy emergency, 14:29-1 et seq.
- Energy facility review board, practice and procedure, 14:33-1
- Home Energy Savings Program, generally, this index
- Meters, 14:6A-3
- Reduction in customers usage, energy emergency, 14:29-1 et seq.
- Reports,
 - Bulk terminal operating companies, 14:34-1
 - Retail fuel merchants, 14:34-3
- Retail fuel merchants, reports, 14:34-3
- Service, 14:6A-2
 - Reductions in use, energy emergency, 14:29-1 et seq.
- Shortages, energy emergency, 14:29-1 et seq.
- Trade secrets, confidentiality, 14:32-1

OPERATOR SERVICE PROVIDERS

- Regulation, 14:10-6

ORDERS

- Cable television, compliance, 14:17-11
- Regulatory commissioners,
 - Compliance, 14:1-10

OWNERS

- Meters, 14:3-4

PARTIES

- Appearance, generally, this index

INDEX

PETITIONS

Cable Television, this index
Public utilities, securities, approval by board, 14:11-1
Regulatory commissioners board, 14:1-5

PETROLEUM

Oil and Petroleum Products, generally, this index

PIPES AND PIPELINES

Gas Mains or Pipes, generally, this index

PLANS AND SPECIFICATIONS

Demand side management, hearings, public utilities, 14:12-5
Gas Companies, this index
Public utilities, demand side management resource plan, 14:12-2

PLEADINGS

Cable television, 14:17-4
Regulatory commissioners board, 14:1-4

PRACTICE AND PROCEDURE

Cable television, office of, 14:17-1 et seq.
Energy facility review board, 14:33-1
Public utilities, regulatory commissioners, 14:1-1 et seq.
Regulatory commissioners, 14:1-1 et seq.
Cable television, 14:17-1 et seq.

PRIORITIES AND PREFERENCES

Gas companies, priority plan for involuntary curtailment, energy emergency, 14:29-3
Oil and petroleum products, energy emergencies, state set-aside program, 14:29-5

PUBLIC PAY TELEPHONE SERVICE

Generally, 14:10-9

PUBLIC UTILITIES

Accidents,
Records, 14:3-6
Reports, 14:11-5
Accounts and accounting, customers bills and payments for service, 14:3-7
Adjustments, rates, 14:11-1
Answers and replies, petitions, 14:1-6
Appeal and review,
Demand side management programs, 14:12-5
Audits and auditing, management, 14:3-12
Autobuses, generally, this index
Board of regulatory commissioners. Regulatory Commissioners, generally, this index
Bonds,
Authority to issue, petitions for, 14:1-5
Board approval, 14:11-1
Budget billing and payment plans, gas and electric utilities, 14:3-7
Buses. Autobuses, generally, this index
Cable Television, generally, this index
Charges,
Adjustment, 14:11-1
Bills and payments for service, 14:3-7

Supp. 2-3-97

PUBLIC UTILITIES—Cont'd

Charges—Cont'd
Default, customers, 14:3-7
Different from filed tariffs, requirements, 14:3-9
Extension of service, 14:3-8
Payments, 14:3-7
Regulatory commissioners, 14:1-2
Standard pricing offers, demand side management programs, 14:12-3
Commissioners. Regulatory Commissioners, generally, this index
Compromise and settlement, conferences, 14:1-7
Conferences, settlement conferences, 14:1-7
Confidential or privileged information, 14:32-1
Connections, refusal to connect with customers installation, 14:3-3
Conservation,
Demand side management, 14:12-1 et seq.
Energy emergencies, 14:29-1 et seq.
Home Energy Savings Program, generally, this index
Construction, 14:3-2
Contested case hearings, 14:1-8
Corrective measures and recommendations, accidents, 14:11-5
Costs. Expenses and expenditures, generally, post
Credit, new customers, deposits, 14:3-7
Default, customers, 14:3-7
Definitions, 14:3-1
Demand side management programs, 14:12-1 et seq.
Deposits,
Condition of supplying service, 14:3-7
Extension of utility service, 14:3-8
Developers, residential land developers, extension of service, 14:3-8
Discontinuance of service, 14:3-3; 14:3-7
Diversion of service, 14:3-7
Earnings, demand side management programs, 14:12-3; 14:12-4
Electric Companies, generally, this index
Electricity, generally, this index
Emergencies,
Energy emergency, 14:29-1 et seq.
Telephone numbers, furnishing to customers, 14:3-5
Eminent domain, petitions for authority to exercise, 14:1-5
Employees,
List, personnel to be contacted, 14:3-5
Energy emergency, 14:29-1 et seq.
Energy facility review board, 14:33-1
Entry upon property, access to customers premises, 14:3-3
Expenses and expenditures,
Cost-effective investment, demand side management initiatives, 14:12-1 et seq.
Recovery, demand side management cost recovery mechanism, 14:12-4
Extension of utility service, 14:3-8
Fees. Charges, generally, ante
Forms,
Accident report forms, 14:11-5
Customers bills, 14:3-7
Franchises,
Petitions for approval, 14:1-5
Garbage and refuse. Solid Waste, generally, this index

INDEX

PUBLIC UTILITIES—Cont'd

Gas Companies, generally, this index
Home Energy Savings Program, generally, this index
Incentives, demand side management programs, 14:12-3
Information, customer information, requirement to furnish, 14:3-3
Inspectors and inspection,
 Equipment and facilities, 14:3-2
Interruption of service, 14:3-3
Investments, demand side management initiatives, 14:12-1 et seq.
Landlord and tenant, discontinuance of residential service, 14:3-7
Leases,
 Approval by board, 14:11-1
 Petitions for approval, 14:1-5
Management, audits and auditing, 14:3-12
Merger or consolidation, petitions for approval, 14:1-5
Meters, generally, this index
Notices,
 Demand side management programs, 14:12-5
 Discontinuance of service, 14:3-7
Offices, 14:3-5
Oil Companies, generally, this index
Payments, customers bills and payments for service, 14:3-7
Performance-based demand side management programs, 14:12-1 et seq.
Petitions,
 Regulatory commissioners board, 14:1-5
 Securities, approval by board, 14:11-1
Plans and specifications, demand side management resource plan, 14:12-2
Poles, construction, 14:3-2
Powers and duties, service to customers, 14:3-3
Practice and procedure, regulatory commissioners, 14:1-1 et seq.
Prior regulations, effect, 14:3-9
Property, sale or lease, petitions for approval, 14:1-5
Railroads, generally, this index
Rates. Charges, generally, ante
Records and recordation, 14:3-6
 Accidents, 14:11-5
 Confidential or privileged information, 14:32-1
Records and recordation, 14:3-6
 Meters, 14:3-4
Recovery of costs, demand side management programs, 14:12-4
Reduction in customers usage, energy emergency, 14:29-1 et seq.
Refusal to connect with customers installation, 14:3-3
Regulatory Commissioners, generally, this index
Reports, 14:3-6
 Accidents, 14:11-5
 Securities, issuance, 14:11-1
Restoration of discontinued service, 14:3-3
Retroactive application of regulations, restrictions, 14:3-9
Sales,
 Approval by board, 14:11-1
 Petitions for approval, 14:1-5
Service, 14:3-3
 Bills and payment for service, 14:3-7

PUBLIC UTILITIES—Cont'd

Service—Cont'd
 Deposits, condition of supplying service, 14:3-7
 Discontinuance of service, 14:3-3; 14:3-7
 Extension of service, suggested cost formulae, 14:3-8
 Payments, 14:3-7
 Restoration, 14:3-3
Sewers and Sewerage, generally, this index
Shared savings, demand side management programs, 14:12-3
Shares and shareholders. Stock and stockholders, generally, post
Shortages, energy emergency, 14:29-1 et seq.
Solid Waste, generally, this index
Stock and stockholders,
 Authority to issue, petitions for, 14:1-5
 Issuance of stock, approval by board, 14:11-1
Telecommunications, generally, this index
Telephone system information, 14:3-6
Telephones. Telecommunications, generally, this index
Television. Cable Television, generally, this index
Tenants, discontinuance of residential service, 14:3-7
Termination of service, 14:3-3, 14:3-7
Tests, meters, 14:3-4
Trade secrets, confidential or privileged information, 14:32-1
Uncontested case proceedings, 14:1-9
Water Supply Plants and Systems, generally, this index
Winter termination, residential electric and gas service, 14:3-7

PUBLIC UTILITIES, BOARD OF

Regulatory Commissioners, generally, this index

RAILROADS

See, also, Carriers, generally, this index
Gas pipeline companies, safety regulations, 14:7-1
Transferred to Transportation, Title 16

RECORDS AND RECORDATION

Cable television, 14:18-6
Electric Companies, this index
Gas companies,
 Retention of records, 14:6-4
Meters, 14:3-4
Oil Companies, this index
Public Utilities, this index
Regulatory Commissioners, this index
Solid Waste, this index
Underground facilities, protection, markouts, 14:2-5

REFUSE DISPOSAL

Solid Waste, generally, this index

REGISTRATION

Telegraph companies, 14:11-1

REGULATORY COMMISSIONERS

Generally, 14:1-1 et seq.
Adjustments, rates, 14:11-1
Answers and replies, petitions, 14:1-6

INDEX

REGULATORY COMMISSIONERS—Cont'd

Appeal and review,
Demand side management plans, 14:12-5
Appearance by parties before board, 14:1-3
Bonds, issuance by utilities, approval, 14:11-1
Cable television, 14:17-1 et seq.
Charges, 14:1-2
Compromise and settlement conferences, 14:1-7
Conferences, 14:1-7
Confidential or privileged information, 14:32-1
Contested case hearings, 14:1-8
Decisions, compliance, 14:1-10
Employees, former employees, representing parties before board, 14:1-3
Cable television hearings, 14:17-3
Energy emergencies, 14:29-1 et seq.
Fees, 14:1-2
Forms,
Petitions, 14:1-5
Franchises, approval, 14:11-1
Petitions for approval, 14:1-5
Home Energy Savings Program, generally, this index
Leases, utility property, approval required, 14:11-1
Notices, 14:1-4
Orders,
Compliance, 14:1-10
Petitions, 14:1-5
Pleadings, 14:1-4
Powers and duties, 14:11-1
Practice and procedure, 14:1-1 et seq.
Cable television, 14:17-1 et seq.
Rates and charges,
Adjustments, 14:11-1
Recommendations, compliance, 14:1-10
Records and recordation,
Accidents, 14:11-5
Confidential or privileged information, 14:32-1
Reports,
Accidents, 14:11-5
Securities issued by utilities, 14:11-1
Representation of parties, ethical conduct, 14:1-3
Sales, utility property, approval required, 14:11-1
Service of process, 14:1-4
Uncontested case proceedings, 14:1-9
Shortages in energy supply, energy emergency, 14:29-1 et seq.
Stock and stockholders, issuance by utilities, approval, 14:11-1
Trade secrets, confidentiality, 14:32-1
Uncontested case proceedings, 14:1-9

REOPENING HEARING OR RECORD

Regulatory commissioners board, contested case hearings, 14:1-8

REPORTS

Bulk terminal operating companies, oil and petroleum products, 14:34-1
Cable television, 14:18-6; 14:18-7
Electric Companies, this index
Gas Companies, this index

Supp. 2-3-97

REPORTS—Cont'd

Gasoline, this index
Motor Fuel, this index
Oil and petroleum products,
Bulk terminal operating companies, 14:34-1
Suppliers, 14:29-7
Oil Companies, this index
Public Utilities, this index
Regulatory Commissioners, this index

REPRESENTATION

Regulatory commissioners, 14:1-3

SAFETY

Gas companies, regulations, 14:7-1

SALES

Cable television, sale or lease of property, petitions for approval, 14:17-6
Gasoline, energy emergencies, regulation and control of retail sale, 14:29-6
Motor fuels, energy emergencies, regulation and control, 14:29-6
Public utilities,
Approval by board, 14:11-1
Petitions for approval, 14:1-5

SALES AND USE TAX

Exemptions,
Solar energy, 14:25-1 et seq.
Solar energy, exemption, 14:25-1 et seq.

SERVICE

Cable television, pleadings, 14:17-4
Regulatory commissioners board,
Service and notice of proceedings, 14:1-4
Uncontested case proceedings, 14:1-9

SEWERS AND SEWERAGE

See, also, Public Utilities, generally, this index
Generally, 14:9-1 et seq.
Accounts and accounting, 14:9-5
Adjustments, rates, purchased sewage treatment adjustment clause, 14:9-8
Connections, 14:9-2
Construction, 14:9-1 et seq.
Inspection, 14:9-1
Overflow, prevention, 14:9-2
Purchased sewage treatment adjustment clause, 14:9-8
Rates and charges,
Purchased sewage treatment adjustment clause, 14:9-8
Underground services,
Protection, markouts, one-call damage prevention system, 14:2-1 et seq.

SHARES AND SHAREHOLDERS

Cable television, petitions for authority to issue shares, 14:17-6
Public utilities, issuance,
Approval by board, 14:11-1

INDEX

SHARES AND SHAREHOLDERS—Cont'd

Public utilities, issuance—Cont'd
Petitions for authority to issue, 14:1-5

SMALL WATER COMPANY TAKEOVER ACT

Application of law, 14:9-6

SOCIAL SERVICES

Public utilities, winter termination of residential electric and gas service, restrictions, 14:3-7

SOLAR ENERGY

Sales and use taxes, exemption, 14:25-1 et seq.

STATE

Energy emergencies, 14:29-1 et seq.
Oil and petroleum products, energy emergencies, state set-aside program, 14:29-5

STORAGE

Bulk terminal operating companies, oil and petroleum products, 14:34-1

STREETS

Gas pipeline companies, safety regulations, 14:7-1

TARIFFS

Cable television, tariff filings or petitions, 14:17-6

TELECOMMUNICATIONS

See, also, Public Utilities, generally, this index
Generally, 14:10-1 et seq.
Accounts and accounting, 14:10-1
Adult-oriented information-access telephone service, 14:10-7
Alternative operator service, regulation, 14:10-6
Bills and payments for service, 14:10-2
Blocked access, adult-oriented information-access telephone service, 14:10-7
Buried cables and conductors,
New residential subdivisions, 14:10-14
Cable television, telephone system, reports, 14:18-7
Children, adult-oriented information-access telephone service, 14:10-7
Competition, intraLATA toll calls, presubscription, 14:10-10
Competitive services, regulation, 14:10-5
Complaints, investigations, 14:10-1
Connections, service connections, 14:10-1
Construction,
Extensions of service,
Expenses, 14:10-3
New residential subdivisions, underground service, 14:10-4
Facilities, 14:10-1
Cost recovery, intraLATA toll calls, presubscription, 14:10-10
Customer provided pay telephone service, 14:10-9
Directories, publication and distribution, 14:10-1
Discrimination, intraLATA toll calls, local exchange carriers, competition, 14:10-10
Expenses and expenditures,
Extensions of service, 14:10-3

TELECOMMUNICATIONS—Cont'd

Extensions of service,
Expenses, suggested formula, 14:10-3
New residential subdivisions, underground extensions, 14:10-4
Imputation standards, local exchange carriers, intraLATA toll calls, 14:10-10
Inspections, tests and maintenance, 14:10-1
Interruptions of service, 14:10-1
IntraLATA toll calls, presubscription, 14:10-10
Itemization of toll charges, 14:10-2
Local access transport areas, toll calls, presubscription, 14:10-10
Local exchange carriers, intraLATA toll calls, competition, 14:10-10
Minimum service levels, 14:10-1
New residential subdivisions, extensions of service, underground service, 14:10-4
Operator service providers, regulation, 14:10-6
Payments, customers bills and payments for service, 14:10-2
Public pay telephone service, 14:10-9
Rates and charges,
Bills and payments for service, 14:10-2
Competitive telecommunications services, 14:10-5
Information provided to customers, 14:10-1
Registration, telegraph companies, 14:11-1
Restricted access, adult-oriented information-access telephone service, 14:10-7
Service, 14:10-1
Adult-oriented information-access telephone service, restrictions, 14:10-7
Alternate operator service, 14:10-6
Bills and payments for service, 14:10-2
Competitive services, regulation, 14:10-5
Extensions of service,
Expenses, suggested formula, 14:10-3
New residential subdivisions, underground extensions, 14:10-4
Suspension of service, voluntary suspension, 14:10-2
Telecommunications, generally, this index
Telephone system information, 14:3-6
Toll calls, local access transport areas, presubscription, 14:10-10
Underground service,
New residential subdivisions, 14:10-4
Protection, markouts, one-call damage prevention system, 14:2-1 et seq.
Unfair trade practices, intraLATA toll calls, local exchange carriers, competition, 14:10-10

TELEPHONES AND TELEGRAPHS

Telecommunications, generally, this index

TELEVISION

Cable Television, generally, this index

TESTS

Cable television, equipment, 14:18-9
Gas Companies, this index
Gas pipeline companies, 14:7-1
Meters, this index

INDEX

TESTS—Cont'd

Oil distribution utilities, meters, 14:6A-3

THERMAL ENERGY

Sales and use tax, exemption, 14:25-1 et seq.

TRADE SECRETS

Public utilities, confidential or privileged information, 14:32-1

TRANSMISSION OF CASES

Regulatory commissioners board, pre-transmittal conferences, 14:1-7

TRUST FUNDS

Nuclear electricity generating facility, decommissioning trust fund, 14:5A-4

UNCONTESTED CASES

Cable television, 14:17-10

Regulatory commissioners board, 14:1-9

UNDERGROUND FACILITY PROTECTION ACT

Natural gas pipelines, safety violations, 14:7-2

UNDERGROUND SERVICES

Gas pipelines, minimum depth, 14:7-1

Protection, markouts, one-call damage prevention system, 14:2-1 et seq.

Telecommunications, this index

UNFAIR TRADE PRACTICES

Telecommunications, intraLATA toll calls, local exchange carriers, competition, 14:10-10

UTILITIES

Public Utilities, generally, this index

WASTE

Solid Waste, generally, this index

WATER SUPPLY PLANTS AND SYSTEMS

See, also, Public Utilities, generally, this index

Generally, 14:9-1 et seq.

Accounts and accounting, 14:9-5

Acquisition,

Small water companies, takeover regulations, 14:9-6

Adjustments, rates, purchased water adjustment clause, 14:9-7

Connections, 14:9-2

Inspection, 14:9-1

Landlord and tenant, discontinuance of service, 14:3-7

Meters, 14:9-3

Pressure and volume of water service, 14:9-2

Purchased water adjustment clause, 14:9-7

Rates and charges,

Purchased water adjustment clause, 14:9-7

Small Water Company Takeover Act, regulations, 14:9-6

Takeovers, small water companies, 14:9-6

Underground services,

Protection, markouts, one-call damage prevention system, 14:2-1 et seq.

WELDING

Natural gas pipelines, 14:7-1

WIND ENERGY

Sales and use tax, exemption, 14:25-2

WINTER TERMINATION PROGRAM

Residential electric and gas service, 14:3-7

STATUTE-TO-RULE TABLE

NJSA Section	NJAC Rule	NJSA Section	NJAC Rule
48:2-12	14:1	48:2-73 et seq.....	14:2
	14:11	48:2-76	14:2
	14:33		14:3-1 through 14:3-9
	14:34	48:2-80	14:2
48:2-13 et seq.	14:6A	48:3-3	14:3-1 through 14:3-9
	14:7		14:9
	16:52	48:3-7.8	14:3-1 through 14:3-9
48:2-13	14:3-1 through 14:3-9		14:9
	14:5A	48:3-9	14:11
	14:6	48:3-12	14:3-1 through 14:3-9
	14:9		14:9
	14:10	48:5A-10	14:17
	14:10-6		14:18
	14:11	48:10-2 et seq.....	14:11
	14:12	48:13-1	14:3-1 through 14:3-9
48:2-14	14:11	48:17-14.1	14:11
48:2-16	14:3-1 through 14:3-9	48:17-24	14:10-6
48:2-17	14:3-1 through 14:3-9	48:19-17	14:3-1 through 14:3-9
	14:9	52:27-11(g)	14:34
48:2-20	14:3-1 through 14:3-9	52:27-18	14:34
	14:9	52:27F-1(g)	14:12
48:2-21	14:5A	52:27F-1(q)	14:12
48:2-21.22	14:10-6	52:27F-11g	14:33
48:2-21.23	14:10-6	52:27F-11q	14:25
48:2-24	14:3-1 through 14:3-9		14:31
	14:9	52:27F-15(c)	14:33
48:2-27	14:3-1 through 14:3-9	52:27F-18	14:12
	14:9		14:29
		52:27F-18(d)	14:32
		54:32B-8.33	14:25

RULE-TO-STATUTE TABLE

NJAC Rule	NJSA Section	NJAC Rule	NJSA Section
14:1	48:2-12	14:10	48:2-13
14:2	48:2-73 et seq.	14:10-6	48:2-13
	48:2-76		48:2-21.22
	48:2-80		48:2-21.23
14:3-1 through 14:3-9	48:2-13		48:17-24
	48:2-16	14:11	48:2-12
	48:2-17		48:2-13
	48:2-20		48:2-14
	48:2-24		48:3-9
	48:2-27		48:10-2 et seq.
	48:2-76		48:17-14.1
	48:3-3	14:12	48:2-13
	48:3-7.8		52:27F-1(g)
	48:3-12		52:27F-1(q)
	48:13A-1		52:27F-18
	48:19-17	14:17	48:5A-10
14:5A	48:2-13	14:18	48:5A-10
	48:2-21	14:25	52:27F-11q
14:6	48:2-13		54:32B-8.33
14:6A	48:2-13 et seq.	14:29	52:27F-18
14:7	48:2-13 et seq.	14:31	52:27F-11q
14:9	48:2-13	14:32	52:27F-18(d)
	48:2-17	14:33	48:2-12
	48:2-20		52:27F-11g
	48:2-24		52:27F-15(c)
	48:2-27	14:34	48:2-12
	48:3-3		52:27-11(g)
	48:3-7.8		52:27-18
	48:3-12		